

HOWARD COUNTY MARYLAND

DEPARTMENT OF PUBLIC WORKS

Reviewed for Howard County S.C.D. and meets technical requirements.

Approved: *John M. Helms* Date: 11-26-79
U.S. SOIL CONSERVATION SERVICE

This development plan is approved for soil erosion and sediment control by The Howard County Soil Conservation District.

Approved: *Robert J. Selman* Date: 11-26-79
HOWARD COUNTY S.C.D.

ENGINEER'S CERTIFICATION

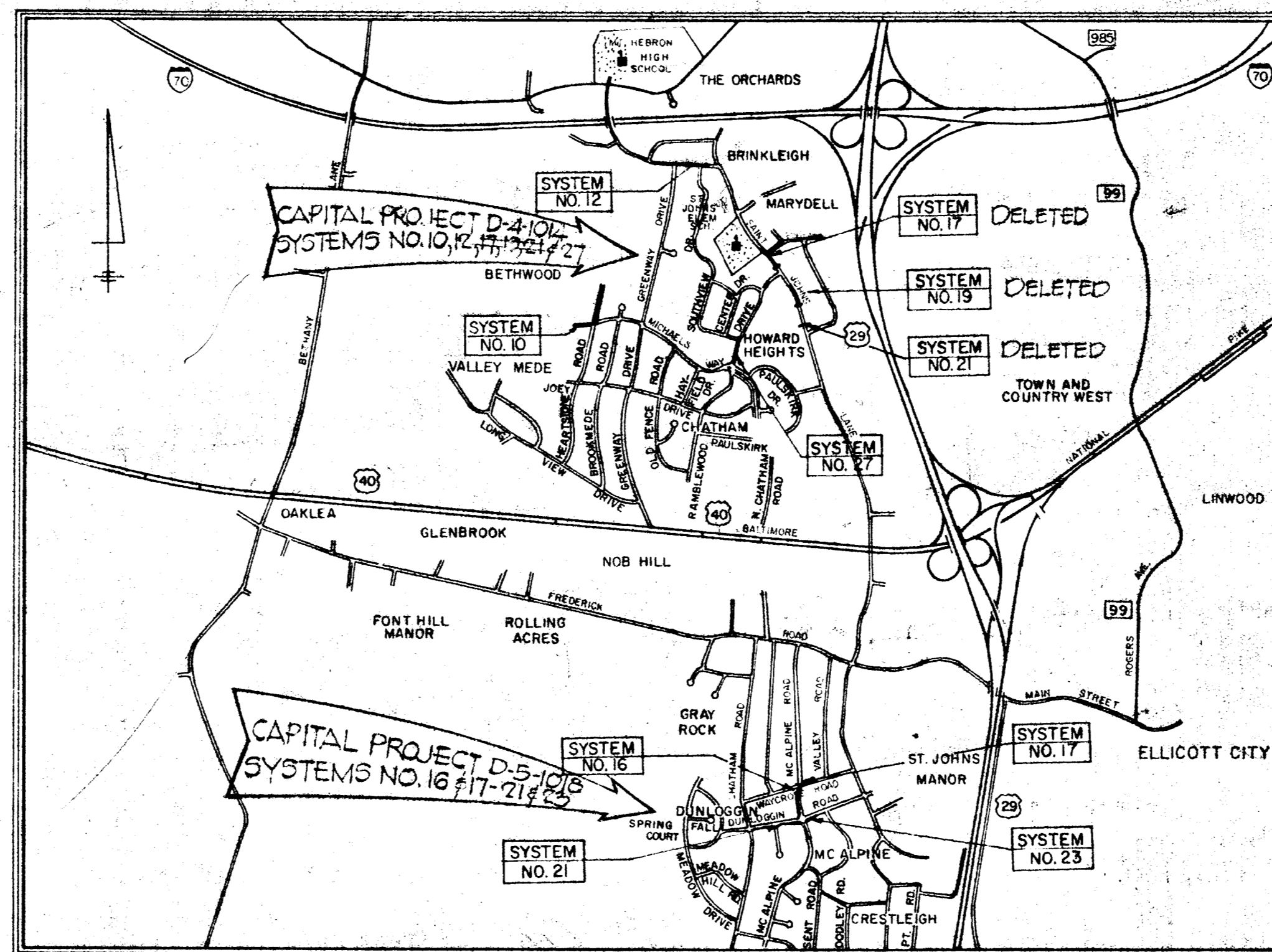
I certify that this plan for erosion and sediment control represents a practical and workable plan based on my personal knowledge of the site conditions and that it was prepared in accordance with the requirements of the Howard County Soil Conservation District.

Donald E. Arkel Date: Oct. 9, 1979
KIDDE CONSULTANTS, INC.
1020 CROWELL BRIDGE ROAD
TOWSON, MD. 21284

DEVELOPER'S CERTIFICATION

I certify that all development and/or construction will be done according to these plans of development and plan of erosion and sediment control and I also authorize periodic on-site inspection by Howard County Soil Conservation District or their authorized agents as are deemed necessary. Deviation from these plans will be permitted only if authorized by the Howard County Soil Conservation District.

William E. Riley, P.E.
WILLIAM E. RILEY, P.E., CHIEF
BUREAU OF ENGINEERING
DEPARTMENT OF PUBLIC WORKS



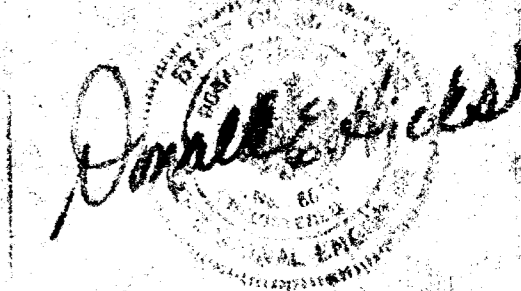
VICINITY MAP
Scale: 1"=2000'

INDEX OF SHEETS		
SHEET NO.	DESCRIPTION	LOCATION
VALLEY MEDE - CAPITAL PROJECT NO. D-4-1014		
1	TITLE SHEET	
2	STANDARD DETAILS	CAPITAL PROJECTS D-4-1014 & D-5-1018
3	DRAINAGE AREA MAP	VALLEY MEDE
4	SYSTEM NO. 10	HEARTHSTONE ROAD & MICHAEL'S WAY
5	SYSTEM NO. 12	ST. JOHN'S LANE
6	SYSTEM NO. 27	RAMBLEWOOD DRIVE
DUNLOGGIN - CAPITAL PROJECT NO. D-5-1018		
7	DRAINAGE AREA MAP	DUNLOGGIN
8	SYSTEM NO. 16 & 17	MAC ALPINE ROAD & HAYCROSS ROAD
	SYSTEM NO. 21 & 23	MAC ALPINE ROAD & DUNLOGGIN ROAD

STORM DRAINAGE IMPROVEMENTS PLUMTREE DRAINAGE AREA VALLEY MEDE AND DUNLOGGIN ELECTION DISTRICT : ELLICOTT CITY NO. 2

C281DZ41

RECORD DRAWING
BY
KIDDE CONSULTANTS, INC.
DATE DEC. 21 1982



KIDDE CONSULTANTS, INC.

ENGINEERS • ARCHITECTS • PLANNERS
BALTIMORE, MARYLAND

DEPARTMENT OF PUBLIC WORKS
HOWARD COUNTY, MARYLAND

William E. Riley DATE: 9/10/82
DIRECTOR, DEPARTMENT OF PUBLIC WORKS

William E. Riley DATE: Sept 2 80
CHIEF, DIVISION OF ROADS, BRIDGES,
AND STORM DRAINAGE

CAPITAL PROJECT NO. D-4-1014
AND
CAPITAL PROJECT NO. D-5-1018

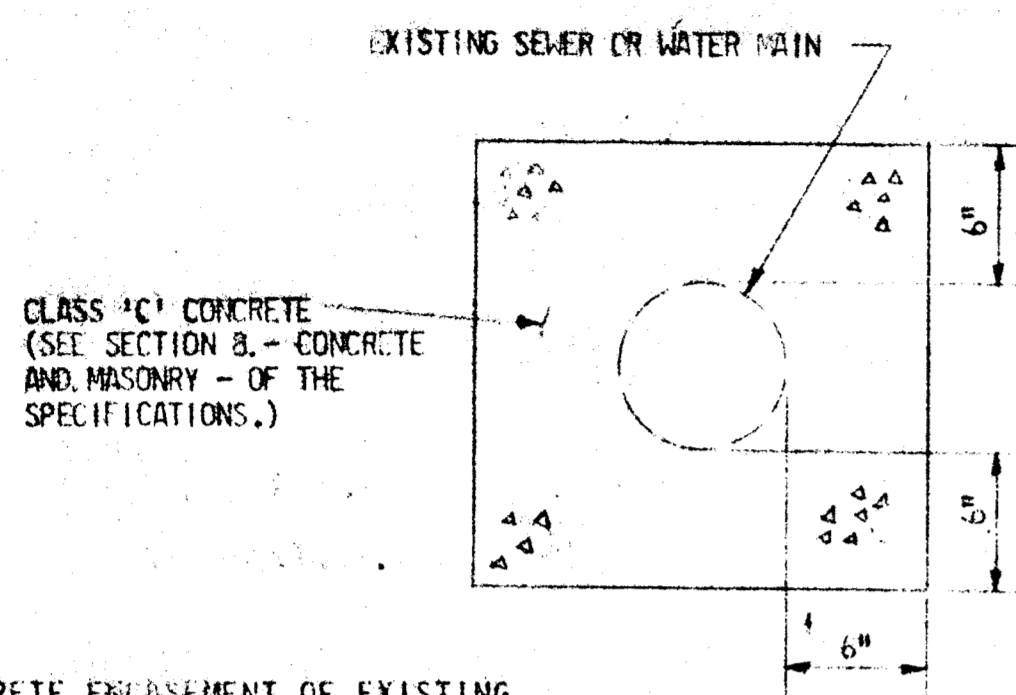
STORM DRAINAGE IMPROVEMENTS
FOR THE
PLUMTREE DRAINAGE AREA

DRAWING
NO. 1
OF 8

SCALE
1"=2,000'

DES: PWZ
DWN: PWZ
CHKD: DLH

NOTE: ENCASEMENT TO EXTEND 5'-0" ON EACH SIDE OF THE CENTERLINE OF STORM DRAIN CROSSING.



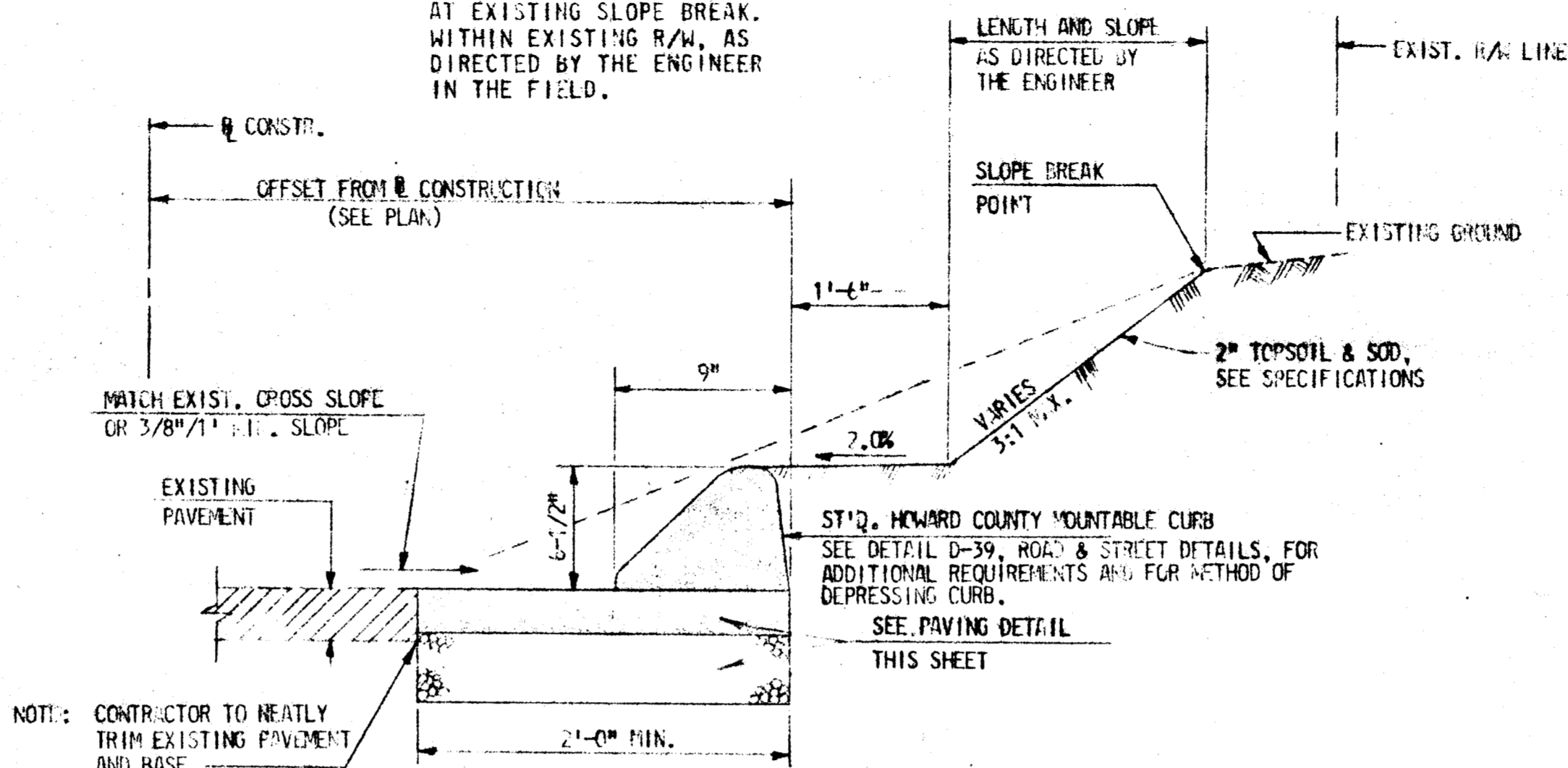
CLASS 'C' CONCRETE (SEE SECTION B - CONCRETE AND MASONRY - OF THE SPECIFICATIONS.)

NOTE: CONCRETE ENCASEMENT OF EXISTING UTILITIES WILL BE PERFORMED ONLY WHERE DIRECTED IN WRITING BY THE ENGINEER IN THE FIELD. PAYMENT FOR CONCRETE ENCASEMENT WILL BE MADE IN ACCORDANCE WITH THE UNIT PRICE PER CUBIC YARD STIPULATED IN THE BID PROPOSAL FORM.

CONCRETE ENCASEMENT DETAIL

NOT TO SCALE

NOTE: VARY CUT SLOPE TO TIL-IN AT EXISTING SLOPE BREAK. WITHIN EXISTING R/W, AS DIRECTED BY THE ENGINEER IN THE FIELD.

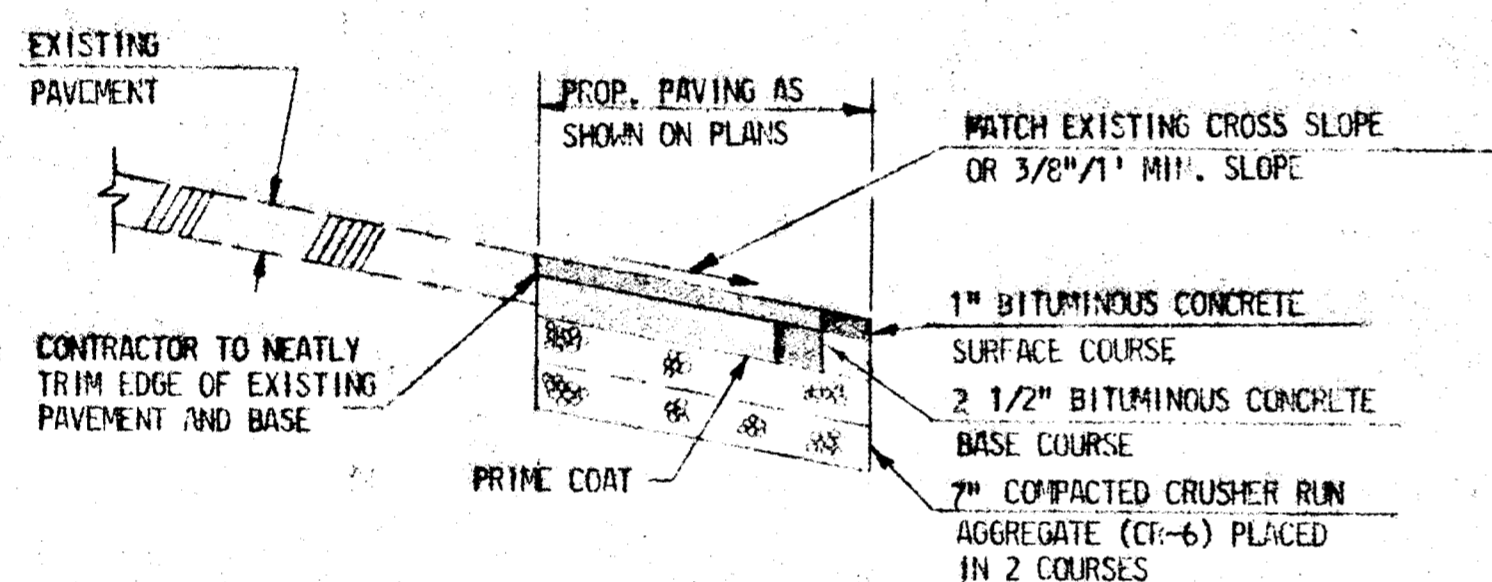


PAVING EXTENSION WITH MOUNTABLE CURB DETAIL

NOT TO SCALE

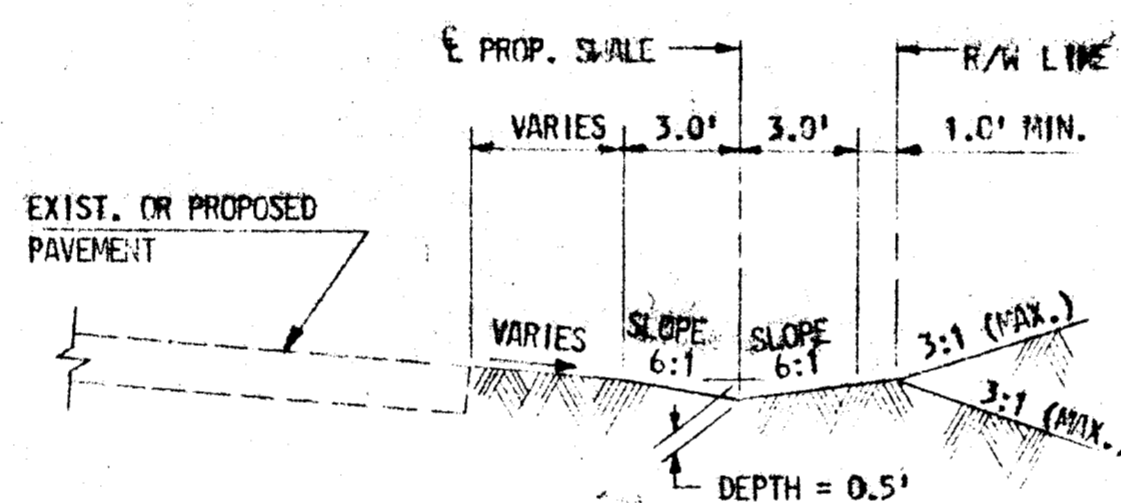
GENERAL NOTES

- THE CONTRACTOR SHALL NOTIFY "MISS UTILITY" AT 1-559-0100 FOR UNDERGROUND UTILITY LOCATIONS, AT LEAST FIVE DAYS PRIOR TO COMMENCING WORK SHOWN ON THE PLANS.
- ALL TOP ELEVATIONS FOR THE PROPOSED INLETS AND MANHOLES ARE APPROXIMATE, AND ARE TO BE VERIFIED IN THE FIELD BY THE CONTRACTOR AND THE ENGINEER.
- THE CONTRACTOR SHALL BE RESPONSIBLE FOR THE RESTORATION OF ALL EXISTING DRIVEWAYS DAMAGED DURING CONSTRUCTION. SEE MEASUREMENT & PAYMENT IN SPECIAL PROVISIONS.
 - EXISTING BITUMINOUS CONCRETE DRIVEWAYS SHALL BE RESTORED AS FOLLOWS:
 - 7 INCHES OF COMPACTED CRUSHER RUN (CR-6), PLACE IN 2 COURSES.
 - A PRIME COAT OF BITUMINOUS MATERIAL
 - A 3-INCH DEPTH OF BITUMINOUS CONCRETE SURFACE COURSE.
 - EXISTING CONCRETE DRIVEWAY SHALL BE RESTORED USING 7" PLAIN CEMENT CONCRETE PAVING, USING 6x6x12, 9x9x12, 12x12 #308, PARALLEL TO Q DRIVEWAY & #312 PERPENDICULAR TO Q DRIVEWAY.
 - EXISTING GRAVEL DRIVEWAYS SHALL BE RESTORED USING 6 INCHES CRUSHER RUN AGGREGATE (CR-6) INSTALLED IN 2 COURSES.
- TREES ARE TO BE PROTECTED FROM DAMAGE TO MAXIMUM EXTENT. TREES LOCATED WITHIN THE CONSTRUCTION STRIP ARE NOT TO BE REMOVED OR DAMAGED BY THE CONTRACTOR.
- CONTRACTOR TO GRADE AROUND THE TOP OF THE PROPOSED INLETS IN ORDER TO PROVIDE POSITIVE DRAINAGE TO THE INLETS. LINING SHALL BE AS SHOWN ON THE PLANS OR AS DIRECTED BY THE ENGINEER.
- COORDINATES ARE BASED ON THE MARYLAND STATE PLANE COORDINATE SYSTEM, 1957 DATUM, PROJECTED BY THE PLANNING AND ZONING COMMISSION OF HOWARD COUNTY, MD.
- THE EXISTING UTILITIES AND OBSTRUCTIONS SHOWN ON THE PLANS ARE FROM THE BEST AVAILABLE RECORDS AND SHALL BE VERIFIED BY THE CONTRACTOR TO HIS OWN SATISFACTION BEFORE STARTING CONSTRUCTION. NEITHER THE ENGINEER NOR THE HOWARD COUNTY DEPARTMENT OF PUBLIC WORKS WARRANT OR GUARANTEE THE COMPLETENESS OR CORRECTNESS OF THE INFORMATION SHOWN.
- THE CONTRACTOR SHALL TAKE ALL NECESSARY PRECAUTIONS TO PROTECT EXISTING UTILITIES. ANY DAMAGE INCURRED SHALL BE REPAIRED IMMEDIATELY TO THE SATISFACTION OF THE ENGINEER BY THE CONTRACTOR AT CONTRACTOR'S EXPENSE.
- THE CONTRACTOR SHALL LOCATE EXISTING UTILITIES A MINIMUM OF TWO WEEKS IN ADVANCE OF CONSTRUCTION OPERATIONS IN VICINITY OF UTILITIES. COST SHALL BE INCLUDED IN THE UNIT PRICES BID FOR EXCAVATION AND BACKFILL FOR MAINS.
- SEE THE SPECIAL PROVISIONS OF THE SPECIFICATIONS FOR INSTRUCTIONS RELATIVE TO EXCESS EARTH DISPOSAL, SEDIMENT CONTROL AND COMPLIANCE WITH HOWARD COUNTY SOIL CONSERVATION DISTRICT REQUIREMENTS.
- CLEAR ALL UTILITIES BY 6". CLEAR ALL POLES BY 2'-0" OR THE PROPOSED STORM DRAIN SHALL BE PLACED BY TUNNELING. COST OF TUNNELING OR BRACING AT POLES SHALL BE INCLUDED IN THE UNIT PRICE BID FOR EXCAVATION AND BACKFILL FOR PROPOSED STORM DRAINS.
- ALL VERTICAL CONTROLS ARE BASED ON U.S.G.S DATUM OF 1929.
- ALL PIPE ELEVATIONS SHOWN ARE INVERT ELEVATIONS.
- CONTRACTOR SHALL REMOVE TREES, STUMPS AND ROOTS ALONG LINE OF EXCAVATION AS DIRECTED BY THE ENGINEER. PAYMENT FOR SUCH REMOVAL SHALL BE INCLUDED IN THE UNIT PRICE BID FOR FURNISHING AND LAYING PIPE STORM DRAINS.
- PLACE REGULATION "MEN WORKING" AND WARNING SIGNS AS REQUIRED TO COMPLY WITH MARYLAND STATE HIGHWAY ADMINISTRATION MANUAL OF TRAFFIC CONTROL FOR HIGHWAY CONSTRUCTION AND MAINTENANCE OPERATIONS.
- EXISTING WATER HOUSE SERVICES, THAT ARE IN CONFLICT WITH THE PROPOSED STORM DRAINAGE FACILITIES, SHALL BE ADJUSTED BY THE CONTRACTOR AS DISCUSSED IN THE CONTRACT SPECIAL PROVISIONS.
- SOIL BORING LOCATIONS.



PAVING SECTION AND PAVING EXTENSION DETAIL

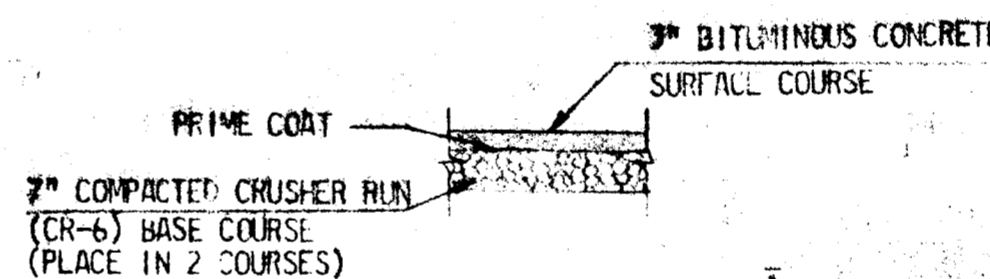
NOT TO SCALE



SWALE DETAIL

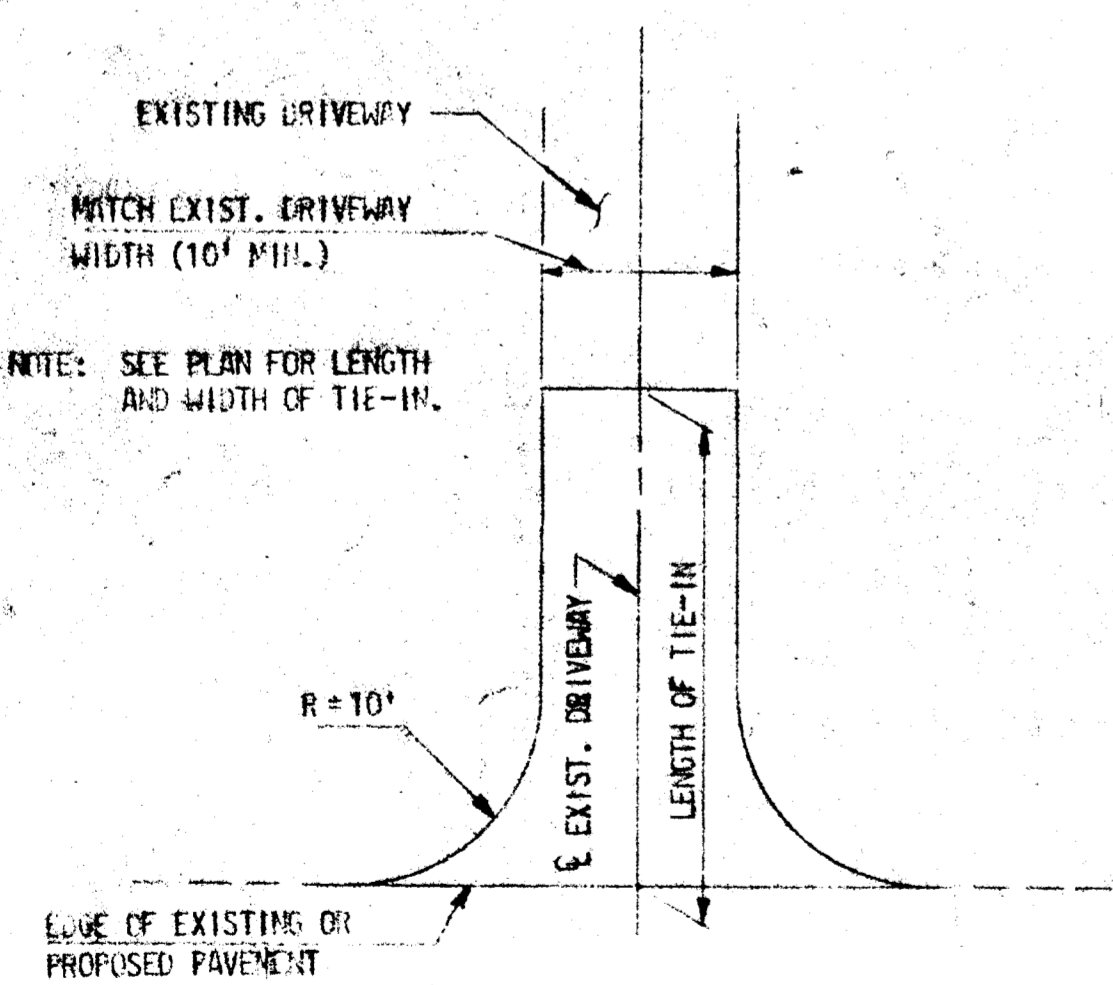
NOT TO SCALE

NOTE: EXACT LOCATION OF PROPOSED SWALE TO BE AT THE DIRECTION OF THE ENGINEER.



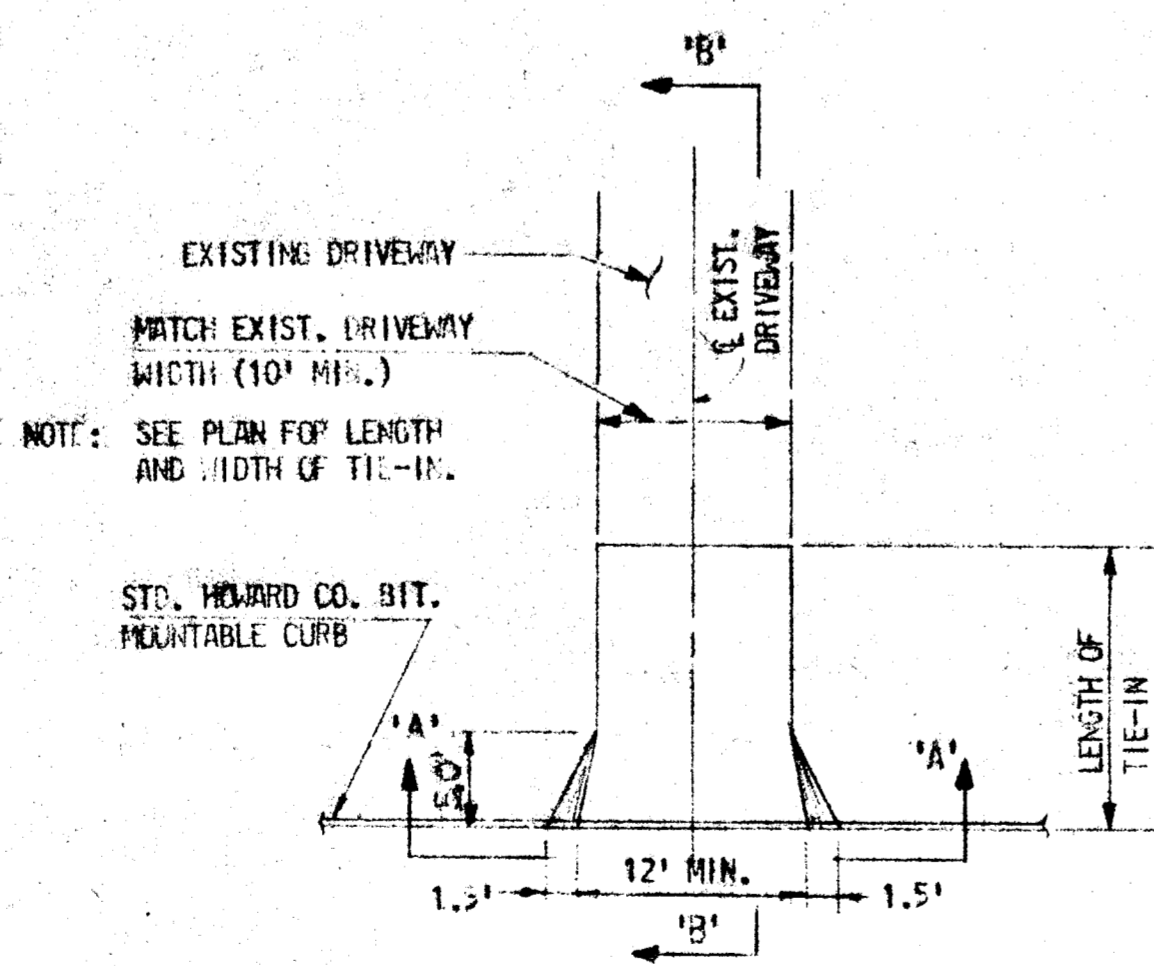
TYPICAL DRIVEWAY PAVING SECTION

NOT TO SCALE



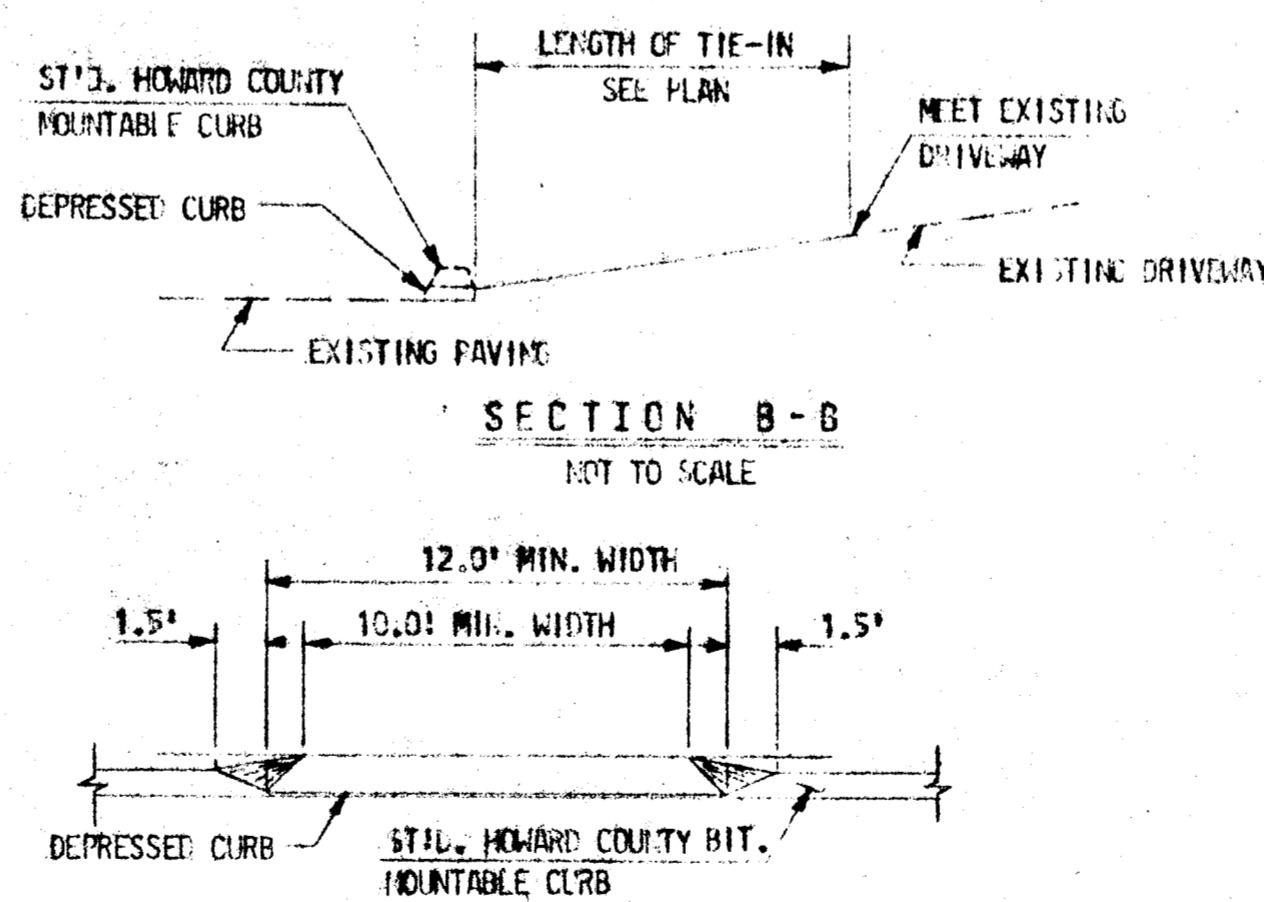
TYPICAL TYPE 'A' DRIVEWAY DETAIL

NOT TO SCALE



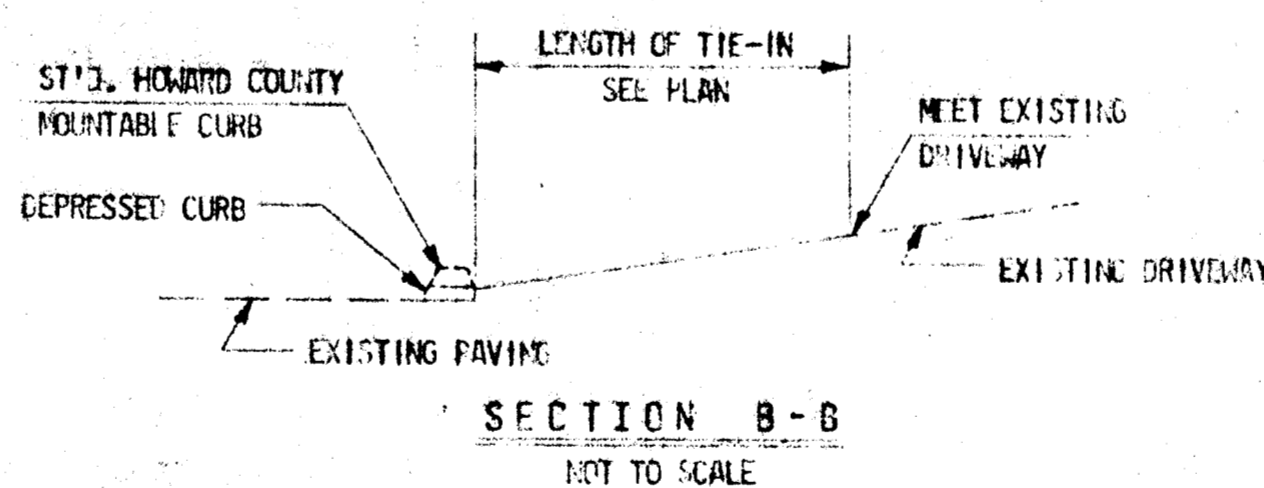
TYPICAL TYPE 'B' DRIVEWAY DETAIL

NOT TO SCALE



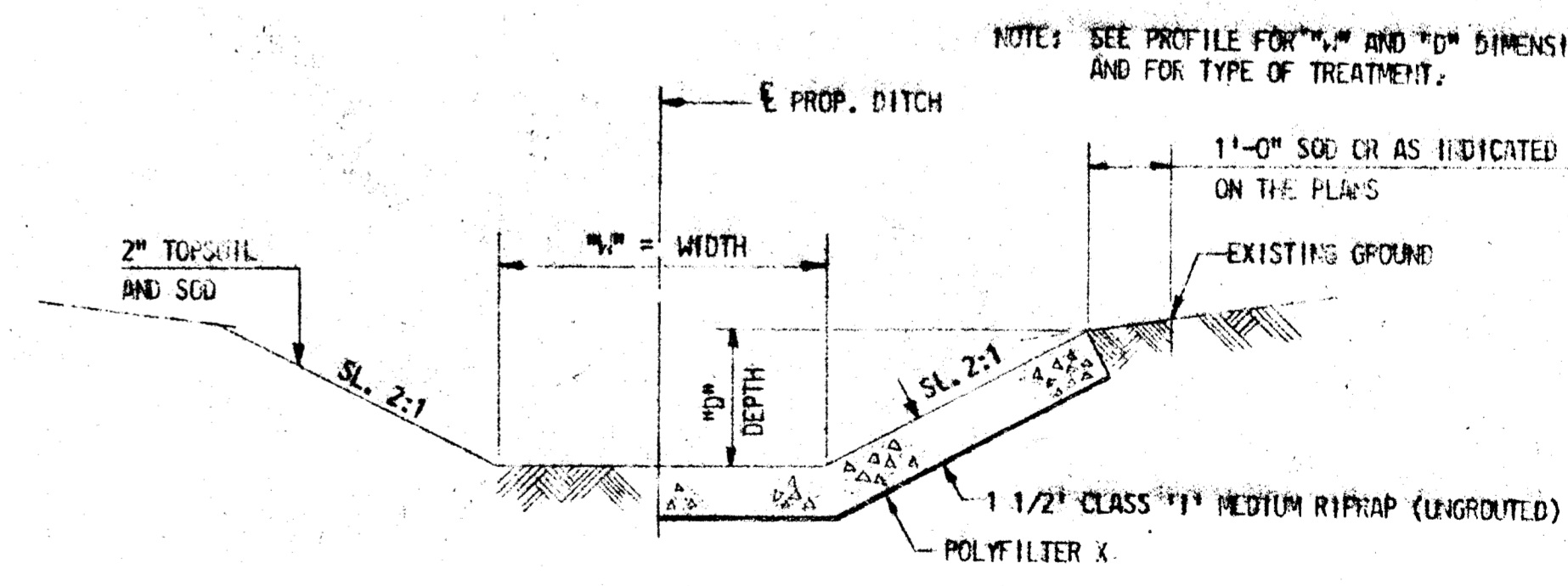
SECTION A-A

NOT TO SCALE



SECTION B-B

NOT TO SCALE



FLAT BOTTOM DITCH DETAIL

NOT TO SCALE

NOTE: SEE PROFILE FOR "A" AND "B" DIMENSIONS AND FOR TYPE OF TREATMENT.

KIDDE CONSULTANTS, INC.
ENGINEERS • ARCHITECTS • PLANNERS
BALTIMORE, MARYLAND

DEPARTMENT OF PUBLIC WORKS
HOWARD COUNTY, MARYLAND

James M. ... DIRECTOR, DEPARTMENT OF PUBLIC WORKS
... CHIEF, BUREAU OF ENGINEERING

Robert A. ... CHIEF, DIVISION OF ROADS, BRIDGES, AND STORM DRAINAGE

CAPITAL PROJECT NO. D-4-1014
AND
CAPITAL PROJECT NO. D-5-1018

STORM DRAINAGE IMPROVEMENTS
VALLEY MEDE & DUNLOGGIN
STANDARD DETAILS
ELECTION DISTRICT: ELICOTT CITY NO. 2

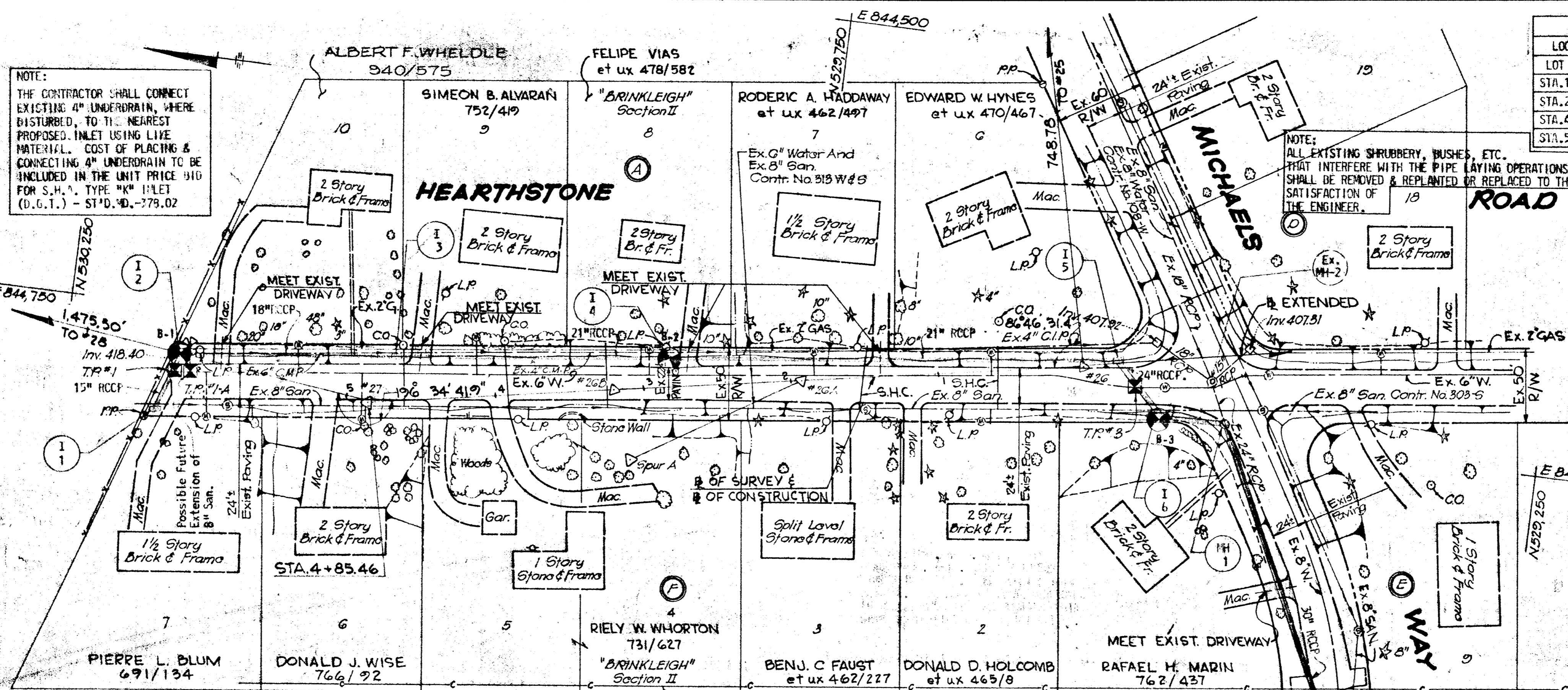
DRAWING
NO. 2
OF 8

SCALE
AS
SHOWN

DES. ...
DR. ...
CK. ...

RECORD DRAWING
BY
KIDDE CONSULTANTS, INC.
DATE: 7/28 12:00 DEC 24 1992





NOTE:
THE CONTRACTOR SHALL CONNECT EXISTING 4\"/>

NOTE:
ALL EXISTING SHRUBBERY, BUSHES, ETC. THAT INTERFERE WITH THE PIPE LAYING OPERATIONS, SHALL BE REMOVED & REPLANTED OR REPLACED TO THE SATISFACTION OF THE ENGINEER.

DRIVEWAY SCHEDULE				
LOCATION	TYPE	WIDTH	LENGTH	REMARKS
LOT NO. 1	'A'	10'	14'	RECONSTRUCT SIDE WALK
STA. 1+40 RT.	'A'	10'	12'	
STA. 2+69 RT.	'A'	12'	12'	HEARTHSTONE ROAD
STA. 4+50 RT.	'A'	14'	12'	
STA. 5+88 RT.	'A'	10'	13'	

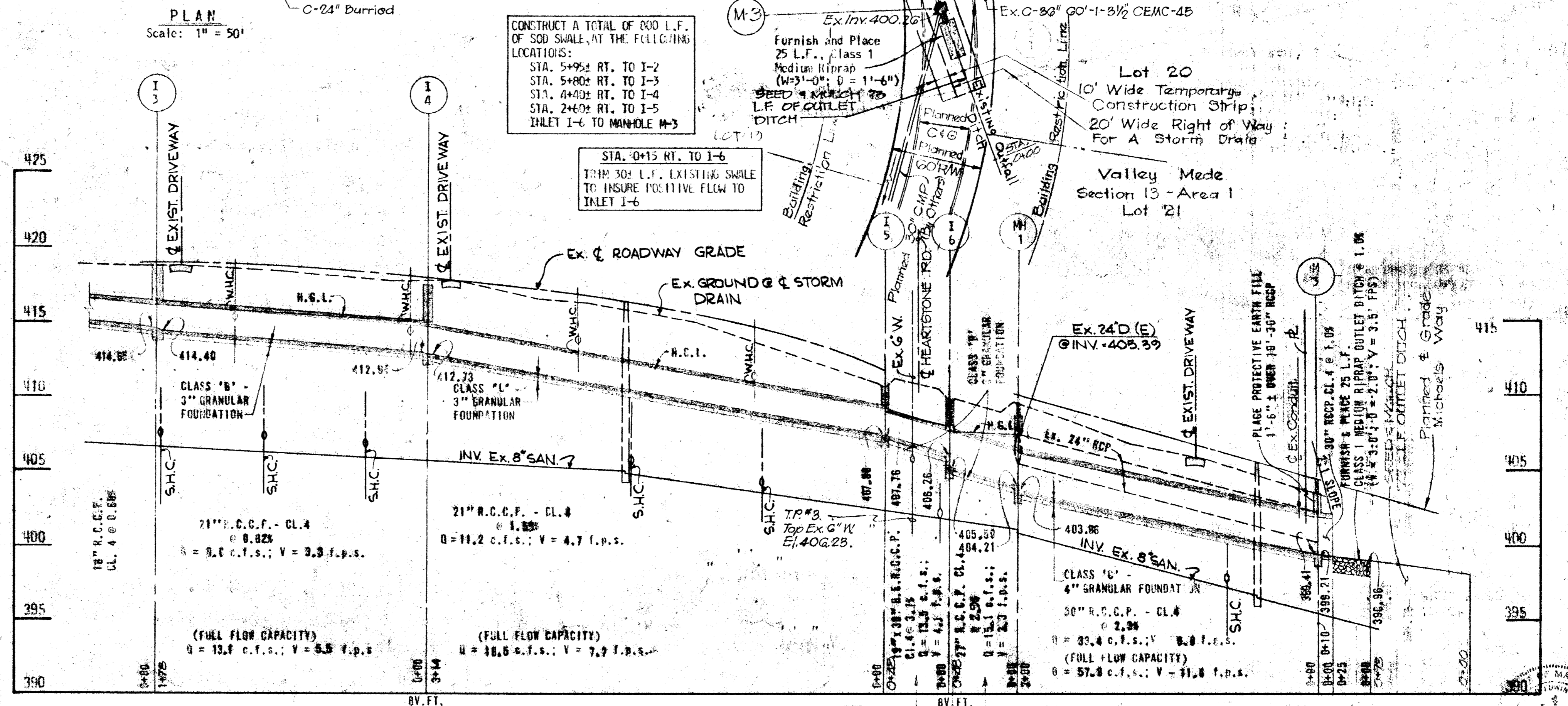
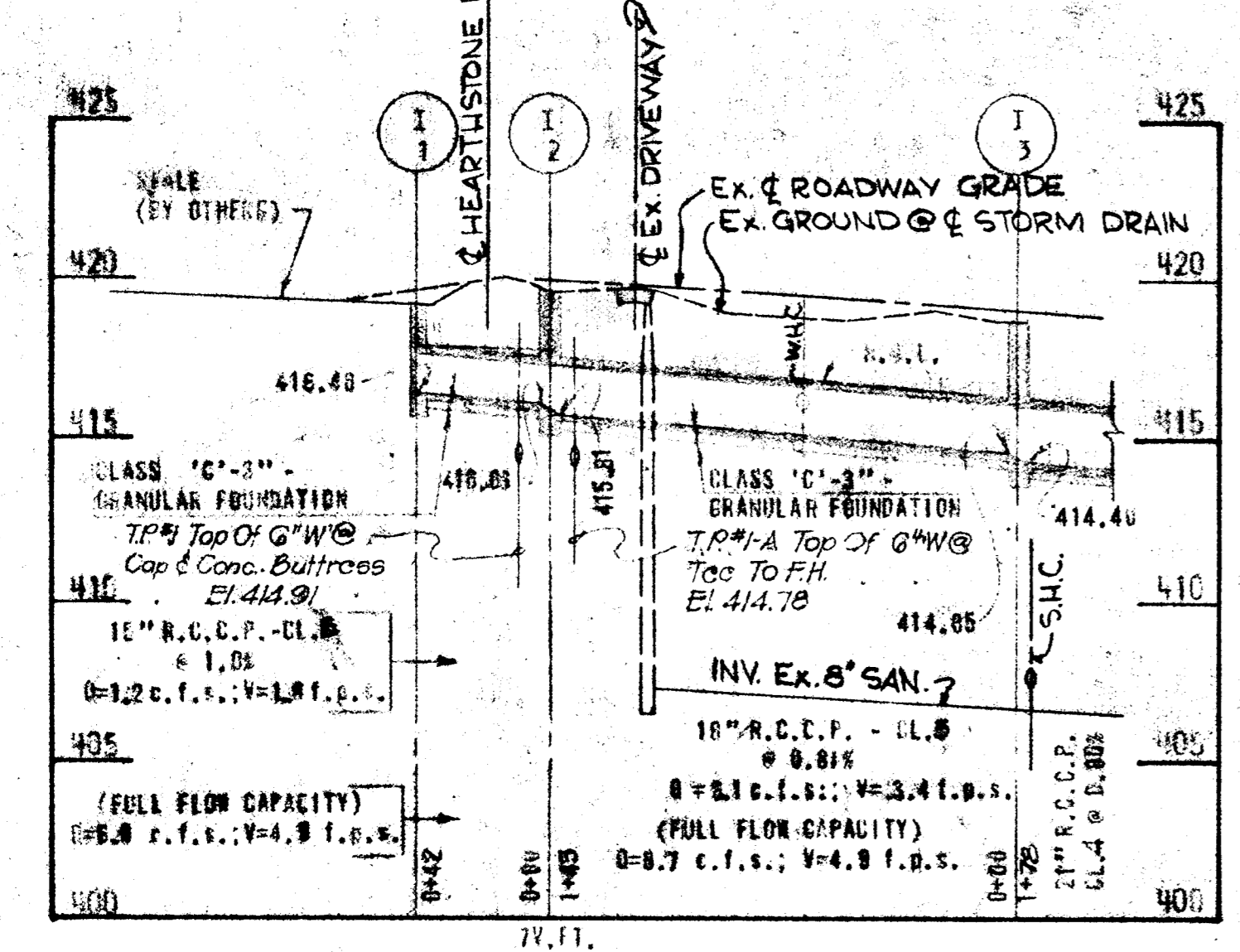
STA. 0+92-45+ RT. (B EXTENDED) CONSTRUCT MANHOLE (MH-1) ON EXISTING 24\"/>

NOTE: FROM INLET NO. 1-6 TO MANHOLE MH-3, RECONSTRUCT 500 SWALE FOR POSITIVE DRAINAGE TO OUTLET.

MANHOLE NO. MH-1 TO MANHOLE NO. MH-3. CONTRACTOR SHALL REMOVE & DISPOSE OF THE EXISTING 24\"/>

STRUCTURE SCHEDULE						
NO.	TYPE	LOCATION	INV. (H)	TOP EL.	REMARKS	
1-1	STR. (INLET)	STA. 6+24 - 41' LT.	416.46	416.00	H.C. DRWG. D-93 & D-95	
1-2	STR. (INLET)	STA. 6+15	416.86	416.51	H.C. DRWG. D-93 & D-95	
1-3	STR. (INLET)	STA. 4+85 - 30' RT.	414.56	414.20	H.C. DRWG. D-93 & D-95	
1-4	STR. (INLET)	STA. 2+83 - 15' RT.	412.54	412.19	H.C. DRWG. D-93 & D-95	
1-5	STR. (INLET)	STA. 0+26 - 3' LT.	407.98	407.62	H.C. DRWG. D-93 & D-95	
1-6	STR. (INLET)	STA. 0+58 - 18' RT.	406.26	405.90	H.C. DRWG. D-93 & D-95	
1-7	STR. (INLET)	STA. 0+64 - 10' RT.	404.21	403.85	FIG. 3.03	
1-8	STR. (MANHOLE)	STA. 0+64 - 10' RT.	399.41	399.21	FIG. 3.03	

* THE TOP ELEVATION OF INLET NUMBER 1-1 SHALL BE ESTABLISHED IN THE FIELD TO INTERCEPT FLOW FROM SWALE.



CONSTRUCT A TOTAL OF 800 L.F. OF 500 SWALE AT THE FOLLOWING LOCATIONS:
STA. 5+95 RT. TO 1-2
STA. 5+80 RT. TO 1-3
STA. 4+80 RT. TO 1-4
STA. 2+60 RT. TO 1-5
INLET 1-6 TO MANHOLE MH-3

STA. 0+15 RT. TO 1-6 TRIP 300 L.F. EXISTING SWALE TO INSURE POSITIVE FLOW TO INLET 1-6

KIDDE CONSULTANTS, INC.
ENGINEERS • ARCHITECTS • PLANNERS
BALTIMORE, MARYLAND

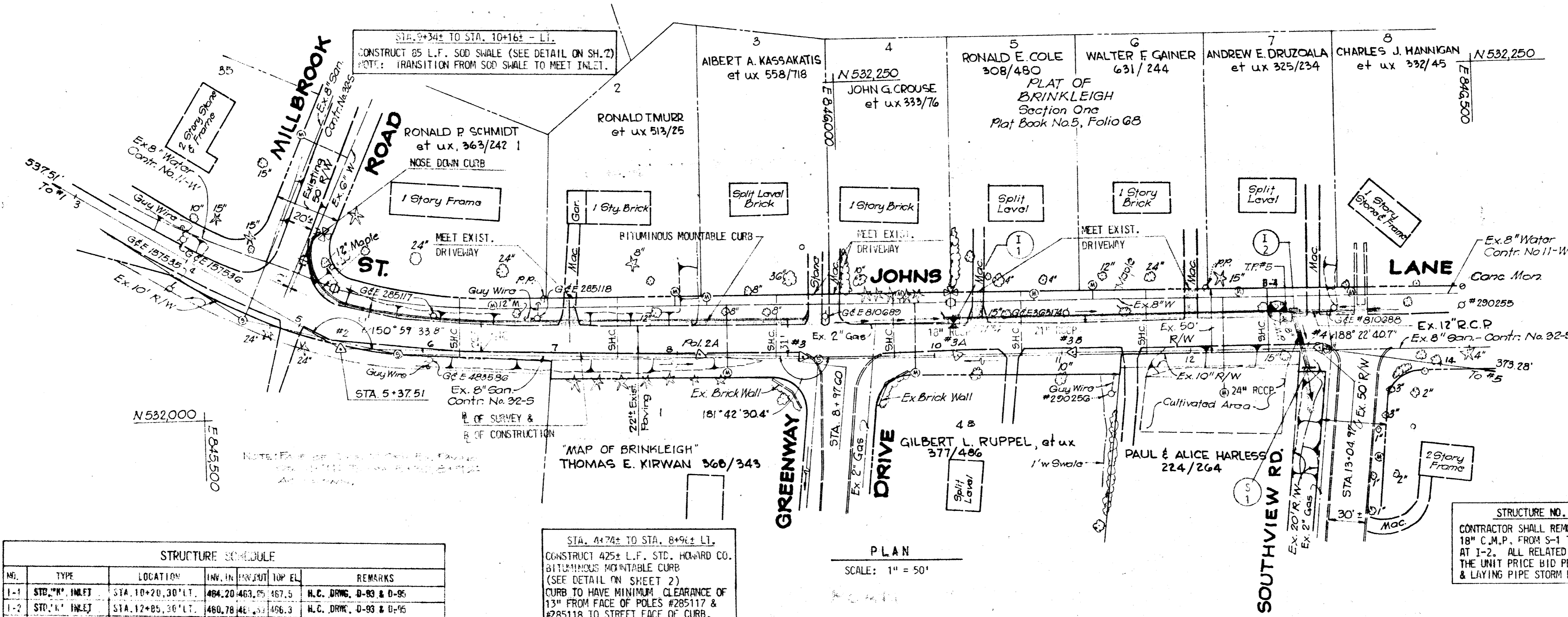
DEPARTMENT OF PUBLIC WORKS
HOWARD COUNTY, MARYLAND
CHIEF, DIVISION OF ROADS, BRIDGES, AND STORM DRAINAGE

CAPITAL PROJECT D-4-1014

STORM DRAINAGE IMPROVEMENTS
VALLEY MEDE - SYSTEM NO. 10
HEARTHSTONE ROAD & MICHAELS WAY
ELECTION DISTRICT: ELLICOTT CITY NO. 2

DRAWING NO. 4 OF 8
SCALE AS SHOWN

RECORDED BY KIDDE CONSULTANTS, INC. DATE DEC 31 1982



STA. 10+45± TO STA. 12+80± LI.
CONSTRUCT 225 L.F. 300 SWALE
(SEE DETAIL ON SHEET 2)
NOTE: TRANSITION FROM SOD
SWALE TO MEET INLET.

STA. 12+80± TO STA. 13+00± LI.
PRIOR TO CONNECTING THE EXISTING
12" R.C. PIPE TO INLET NO. I-2 THE
EXISTING DRAIN SHALL BE FLUSHED
CLEAN BY THE CONTRACTOR.

STA. 10+ TO STA. 12+ LI.
THE CONTRACTOR SHALL TUNNEL PAST
TREES, BY HAND EXCAVATION IF
NECESSARY OR DIRECTED, IN ORDER
TO PREVENT DAMAGING THE TREES.

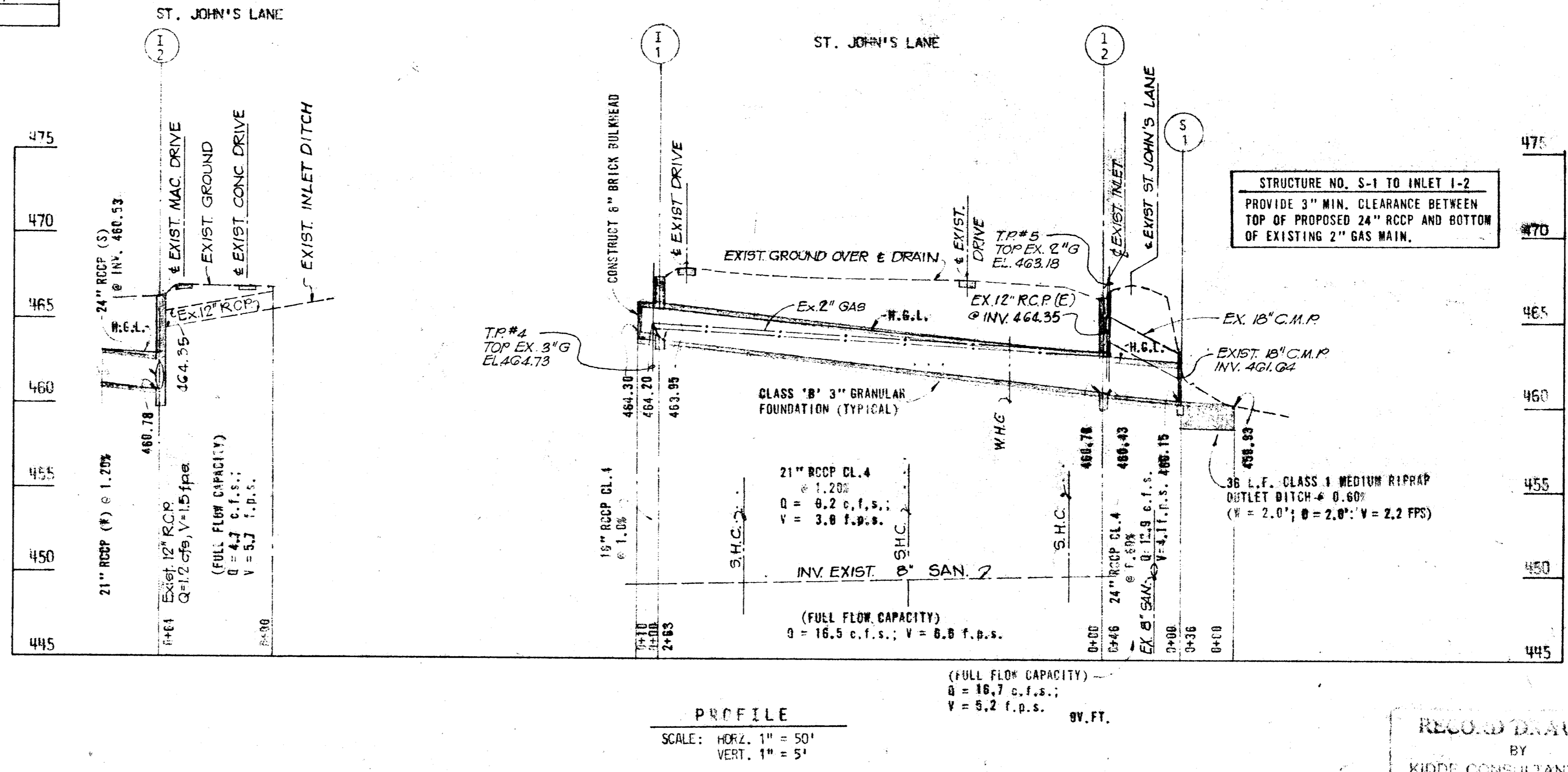
STRUCTURE NO. S-1 TO INLET I-2
CONTRACTOR SHALL REMOVE & DISPOSE OF THE EXISTING
18" C.M.P. FROM S-1 TO I-2 AND THE EXISTING INLET
AT I-2. ALL RELATED COSTS ARE TO BE INCLUDED IN
THE UNIT PRICE BID PER LINEAR FOOT FOR FURNISHING
& LAYING PIPE STORM DRAINS.

STRUCTURE SCHEDULE						
NO.	TYPE	LOCATION	INV. IN	INV. OUT	TOP EL.	REMARKS
I-1	STD. "K" INLET	STA. 10+20, 30' LT.	464.20	463.75	467.5	H.C. DRNG. D-83 & D-95
I-2	STD. "K" INLET	STA. 12+85, 36' LT.	460.78	461.33	466.3	H.C. DRNG. D-93 & D-95
S-1	MANHOLE	STA. 12+85, 16' LT.	460.2	463.0		H.C. DRNG. D-52

STA. 4+74± TO STA. 8+9± LI.
CONSTRUCT 425± L.F. STD. HOWARD CO.
BITUMINOUS MOUNTABLE CURB
(SEE DETAIL ON SHEET 2)
CURB TO HAVE MINIMUM CLEARANCE OF
13" FROM FACE OF POLES #285117 &
#285118 TO STREET FACE OF CURB.

DRIVEWAY SCHEDULE				
LOCATION	TYPE	DEPTH	LENGTH	REMARKS
STA. 7+15± LT.	B	11"	12'	
STA. 2+05± LT.	A	11"	10'	SEE PLAN
STA. 2+23± LT.	A	18"	11'	SEE PLAN
STA. 10+96± LT.	A	16"	12'	
STA. 12+02± LT.	A	10"	17'	

* CONSTRUCT SWALE TO CONVEY FLOW FROM SOD'D SWALE ACROSS MACADAM DRIVEWAY.



STRUCTURE NO. S-1 TO INLET I-2
PROVIDE 3" MIN. CLEARANCE BETWEEN
TOP OF PROPOSED 24" RCCP AND BOTTOM
OF EXISTING 2" GAS MAIN.

PROFILE
SCALE: HORIZ. 1" = 50'
VERT. 1" = 5'

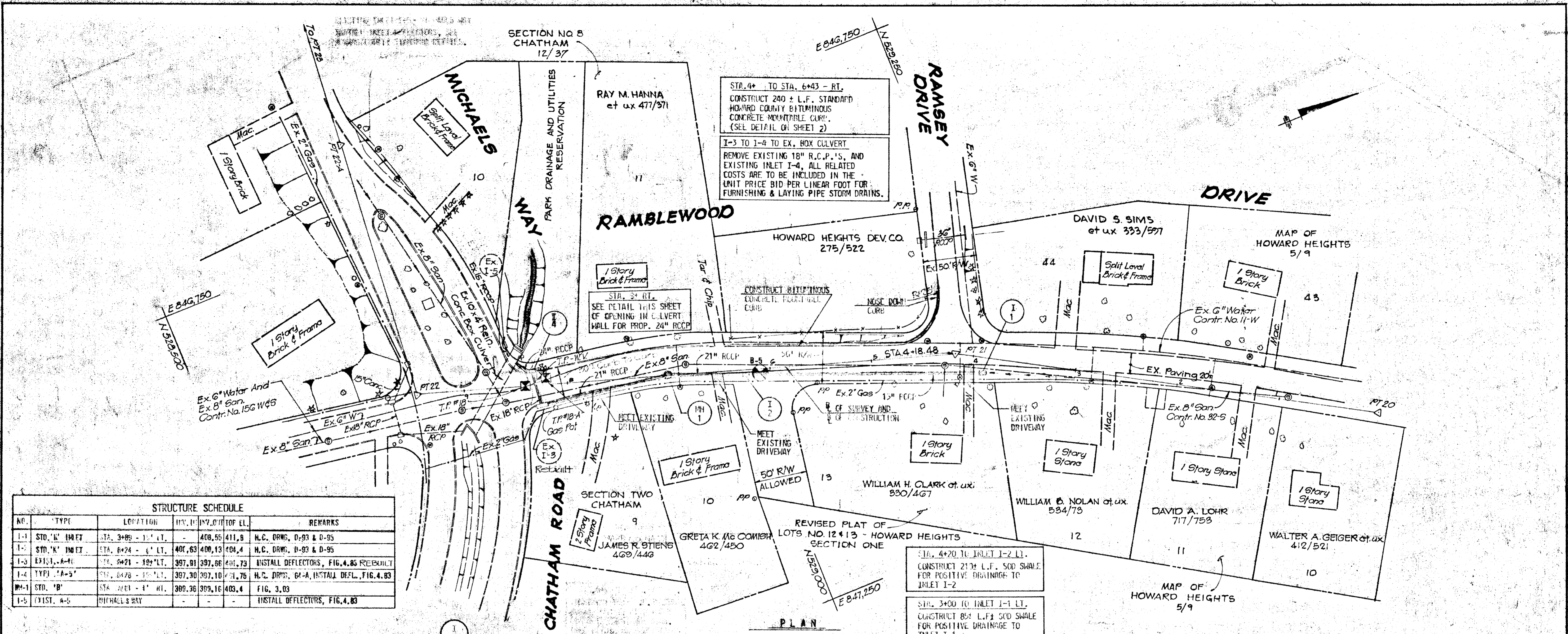
KIDDE CONSULTANTS, INC.
ENGINEERS • ARCHITECTS • PLANNERS
BALTIMORE, MARYLAND

DEPARTMENT OF PUBLIC WORKS
HOWARD COUNTY, MARYLAND
DATE: SEP 13, 2000
CHIEF, BUREAU OF ENGINEERING

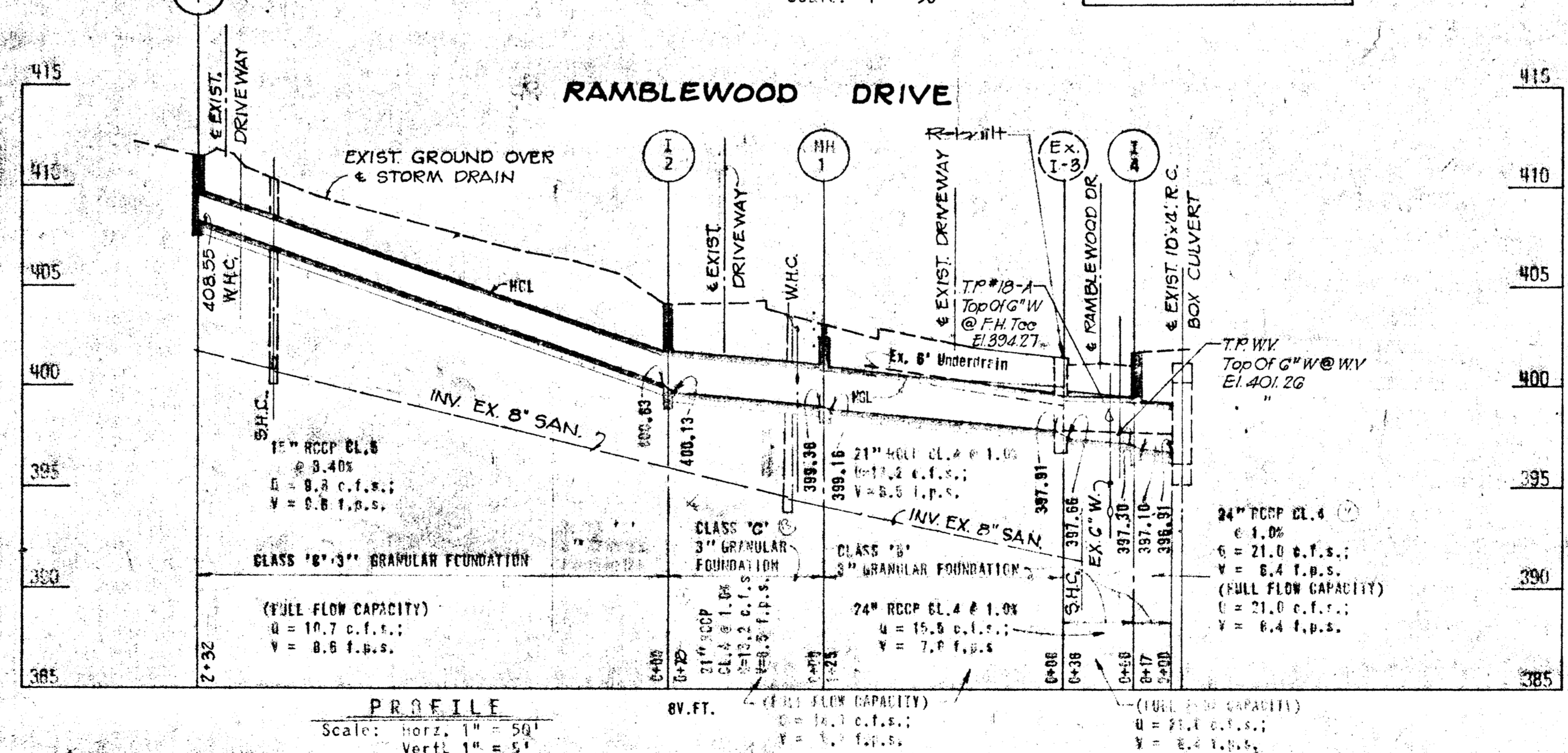
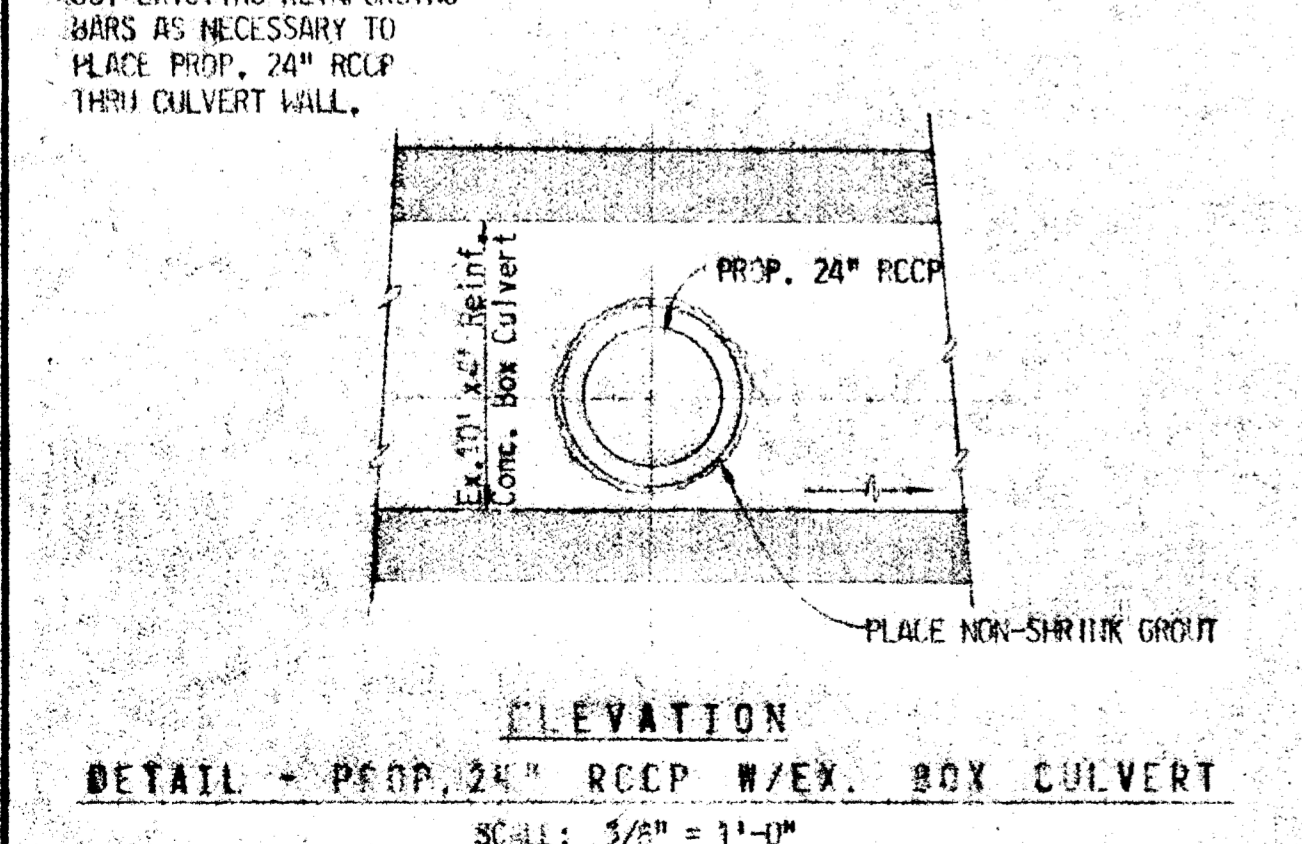
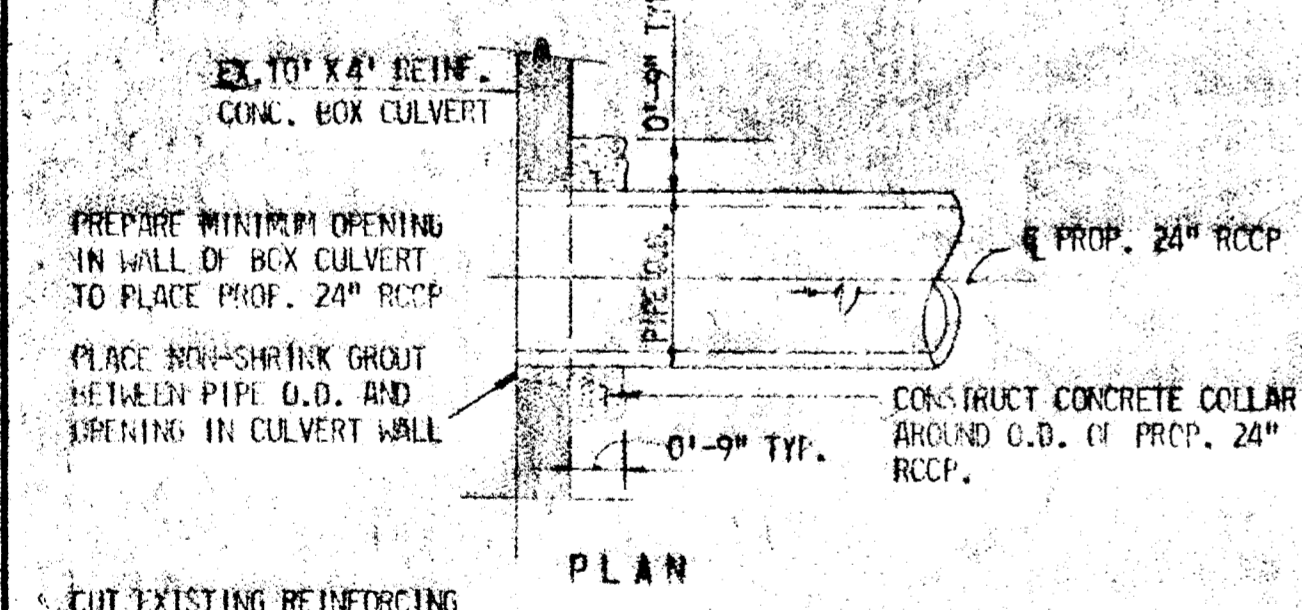
CAPITAL PROJECT D-4-1014

STORM DRAINAGE IMPROVEMENTS
VALLEY MEDE - SYSTEM NO.12
ST. JOHN'S LANE
ELECTION DISTRICT ELLICOTT CITY NO. 2

DRAWING NO. 5 OF 8
SCALE AS SHOWN
DES. P.K.Z.
DR. J.J.
CK. J.M.



NO.	TYPE	LOCATION	INVERT	TOP EL.	REMARKS
1-1	STD. 'K' INLET	STA. 3+89 - 1' LT.	-	408.55	H.C. DRWG. D-93 & D-95
1-2	STD. 'K' INLET	STA. 6+24 - 1' LT.	406.63	404.4	H.C. DRWG. D-93 & D-95
1-3	EXIST. A-1	STA. 5+21 - 10' LT.	397.81	397.86	INSTALL DEFLECTORS, FIG. 4.85 REBUILT
1-4	TYP. 'A-5'	STA. 6+78 - 10' LT.	397.30	397.10	H.C. DRWG. G-4-A, INSTALL DEF., FIG. 4.83
1-5	STD. 'B'	STA. 4+01 - 4' RT.	389.36	389.16	FIG. 3.03
1-5	EXIST. A-5	MICHAELS WAY	-	-	INSTALL DEFLECTORS, FIG. 4.83

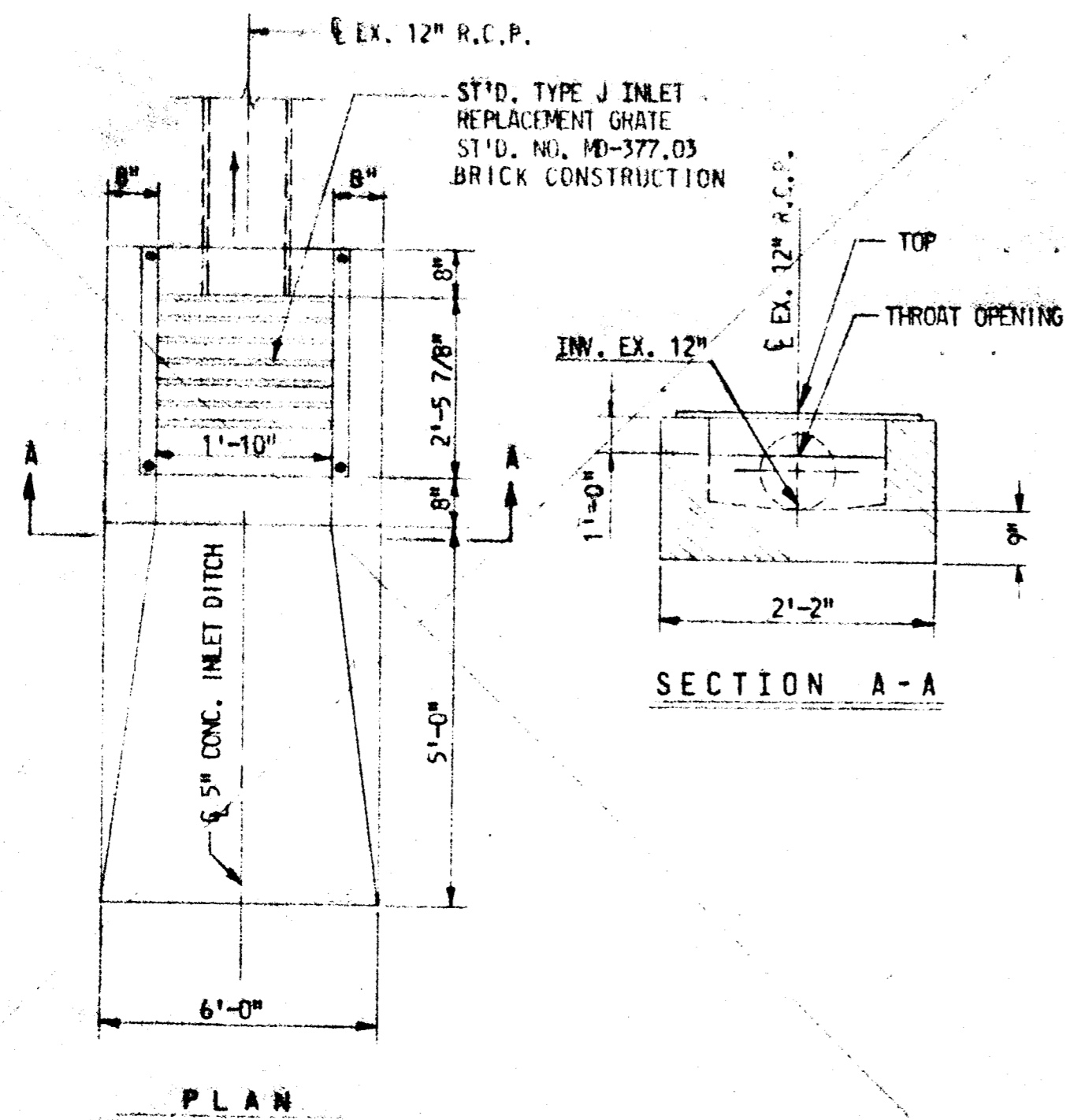


LOCATION	TYPE	WIDTH	LENGTH	REMARKS
ST. 4+03 LT.	A	10'	16'	
ST. 6+56 RT.	F	11'	12'	
ST. 7+58 LT.	S	16'	16'	

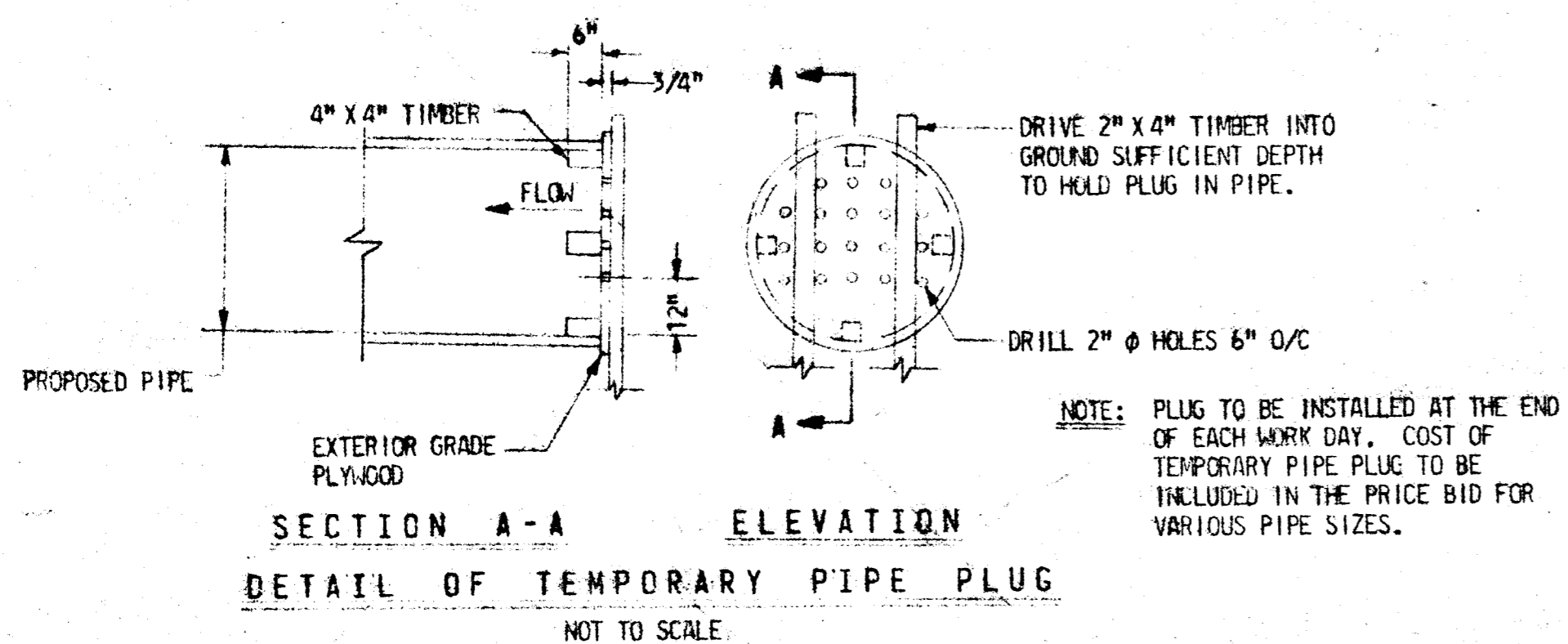
RECORD DRAWING
 BY
 KIDDE CONSULTANTS, INC.
 DATE: DEC 21 1982

KIDDE CONSULTANTS, INC. ENGINEERS • ARCHITECTS • PLANNERS BALTIMORE, MARYLAND	DEPARTMENT OF PUBLIC WORKS HOWARD COUNTY, MARYLAND DIRECTOR, DEPARTMENT OF PUBLIC WORKS	CAPITAL PROJECT D-4-1014	STORM DRAINAGE IMPROVEMENTS VALLEY MEDE - SYSTEM NO. 27 RAMBLEWOOD DRIVE ELECTION DISTRICT: ELLICOTT CITY NO. 2	DRAWING NO. 6 OF 8	SCALE AS SHOWN
				DES. DR. CK.	

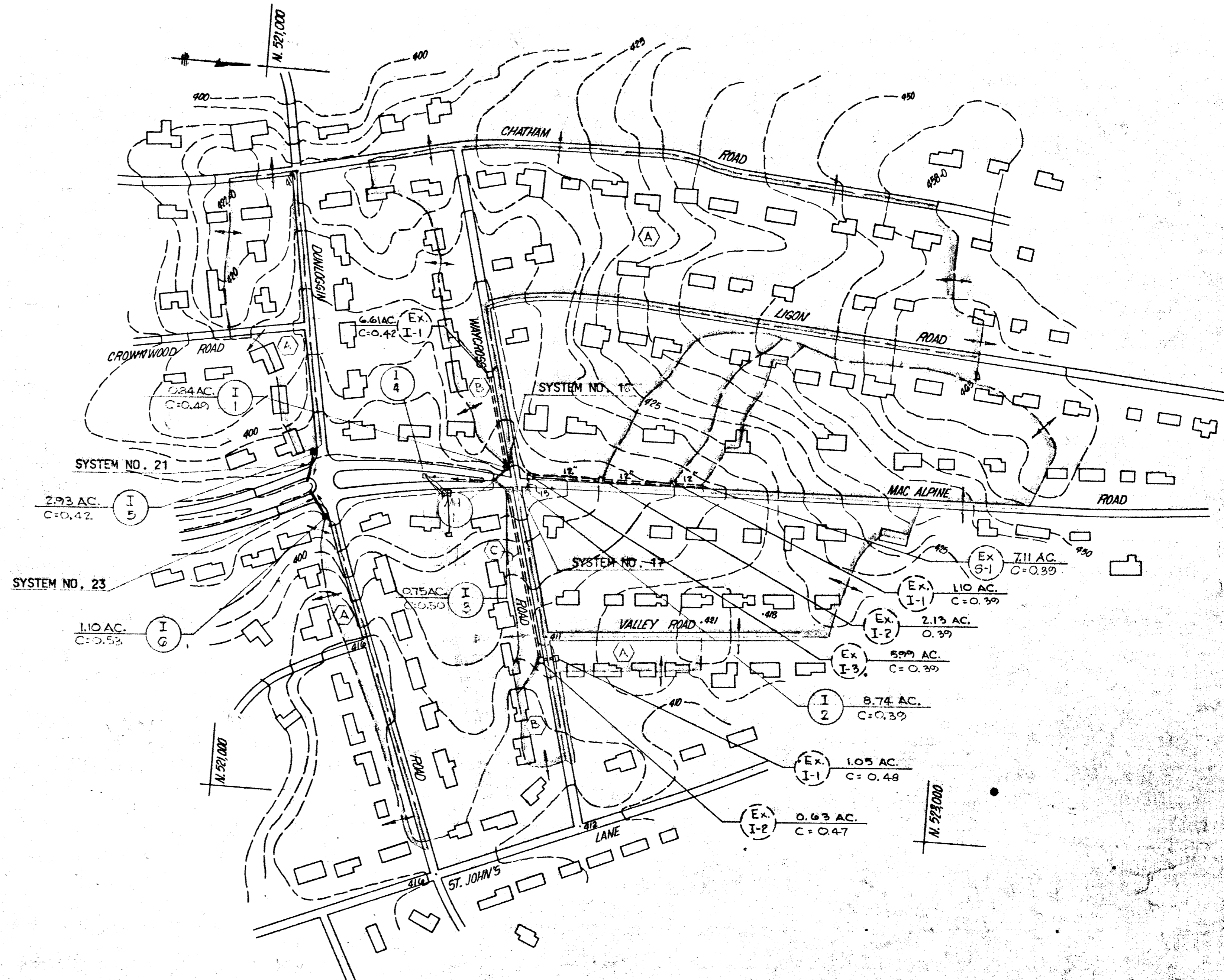
KCI 311, RD. 1-77022 - VALLEY MEDE
 KCI 311, RD. 1-77025 - DUNLOGGIN



SPECIAL INLET I-1 FOR SYSTEM NO. 17 DUNLOGGIN
NOT TO SCALE

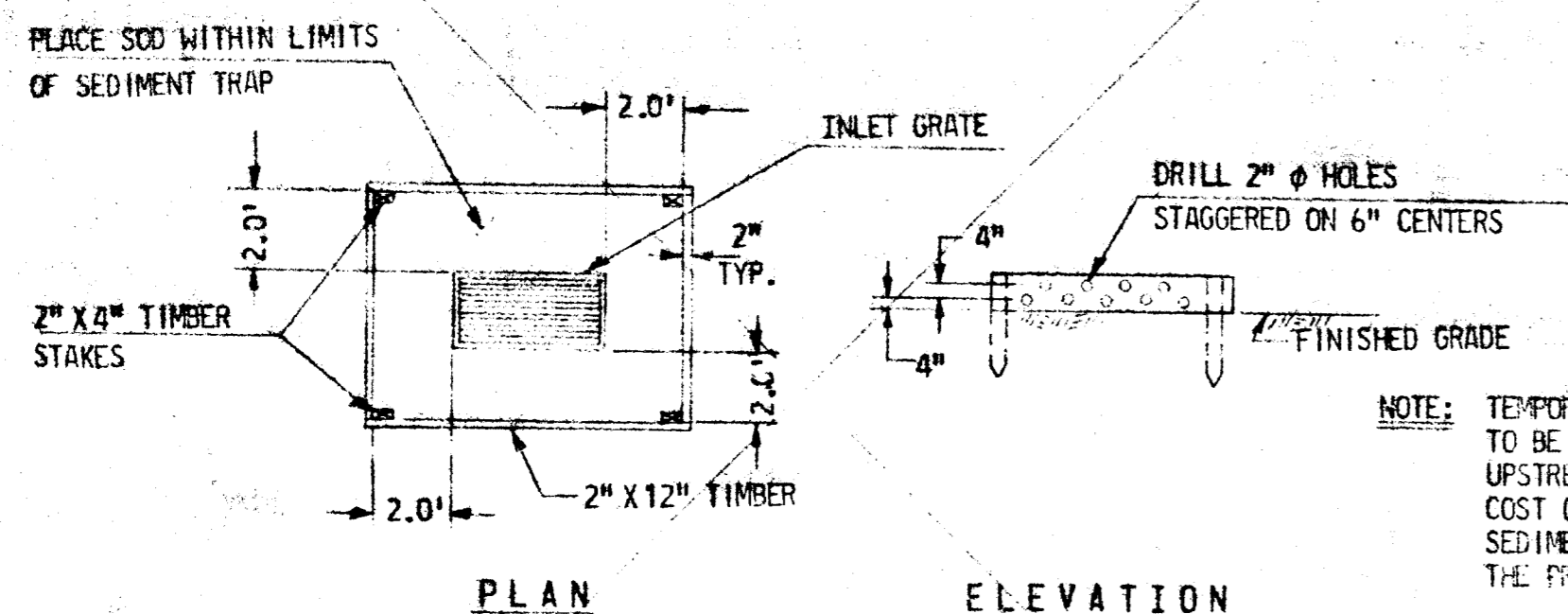


SECTION A-A ELEVATION
DETAIL OF TEMPORARY PIPE PLUG
NOT TO SCALE



DRAINAGE AREA MAP

SCALE: 1" = 200'



PLAN ELEVATION
DETAIL OF TIMBER INLET SEDIMENT TRAP
NOT TO SCALE

RECORD DRAWING
BY
KIDDE CONSULTANTS, INC.
DATE: DEC 21 1982

Donald J. Kidde
REGISTERED PROFESSIONAL ENGINEER
STATE OF MARYLAND
NO. 10183

KIDDE CONSULTANTS, INC.
ENGINEERS • ARCHITECTS • PLANNERS
BALTIMORE, MARYLAND

DEPARTMENT OF PUBLIC WORKS
HOWARD COUNTY, MARYLAND
James M. Carr
DIRECTOR, DEPARTMENT OF PUBLIC WORKS
DATE: 1/10/83

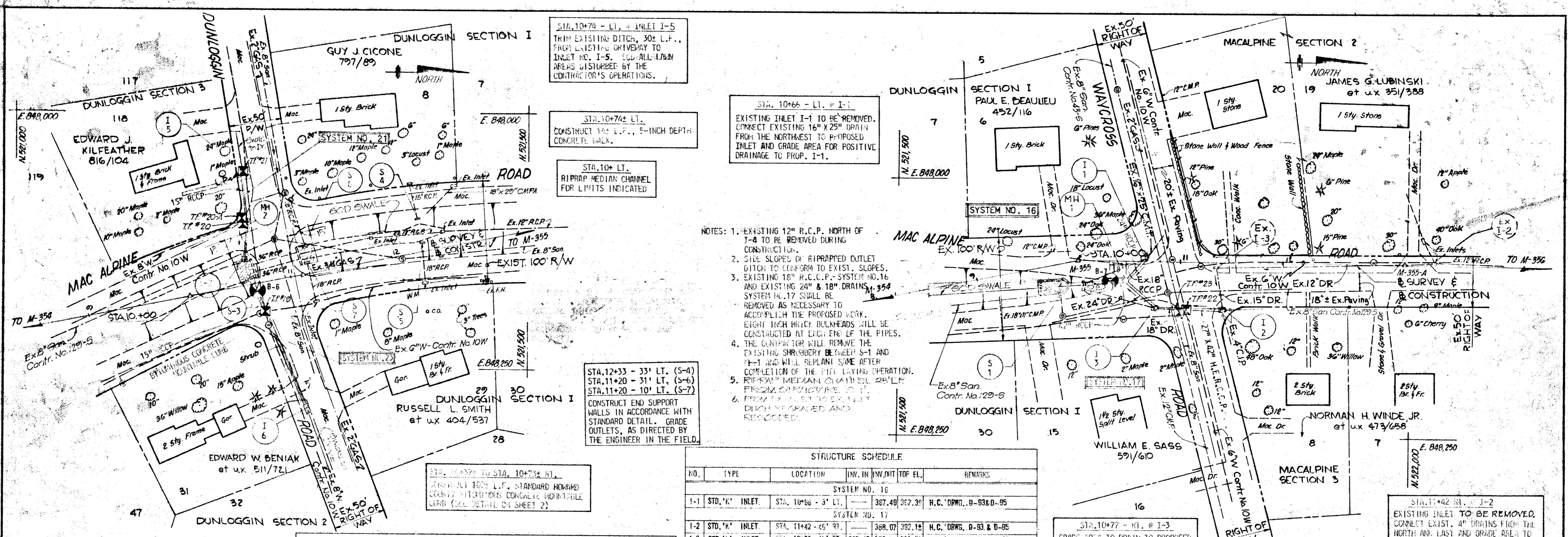
Harold A. Galia
CHIEF, DIVISION OF ROADS, BRIDGES,
AND STORM DRAINAGE
DATE: 1/10/83

CAPITAL PROJECT D-5-1018

STORM DRAINAGE IMPROVEMENTS
DUNLOGGIN
DRAINAGE AREA MAP
ELECTION DISTRICT - ELLICOTT CITY NO. 2

DRAWING NO. 7 OF 8
SCALE AS SHOWN
DES. PAZ
CHK. JJA
APP. DEH

NOT D.D. NO. 1-77022 - VALLEY MD.
NOT D.D. NO. 1-77023 - DUNLOGGIN



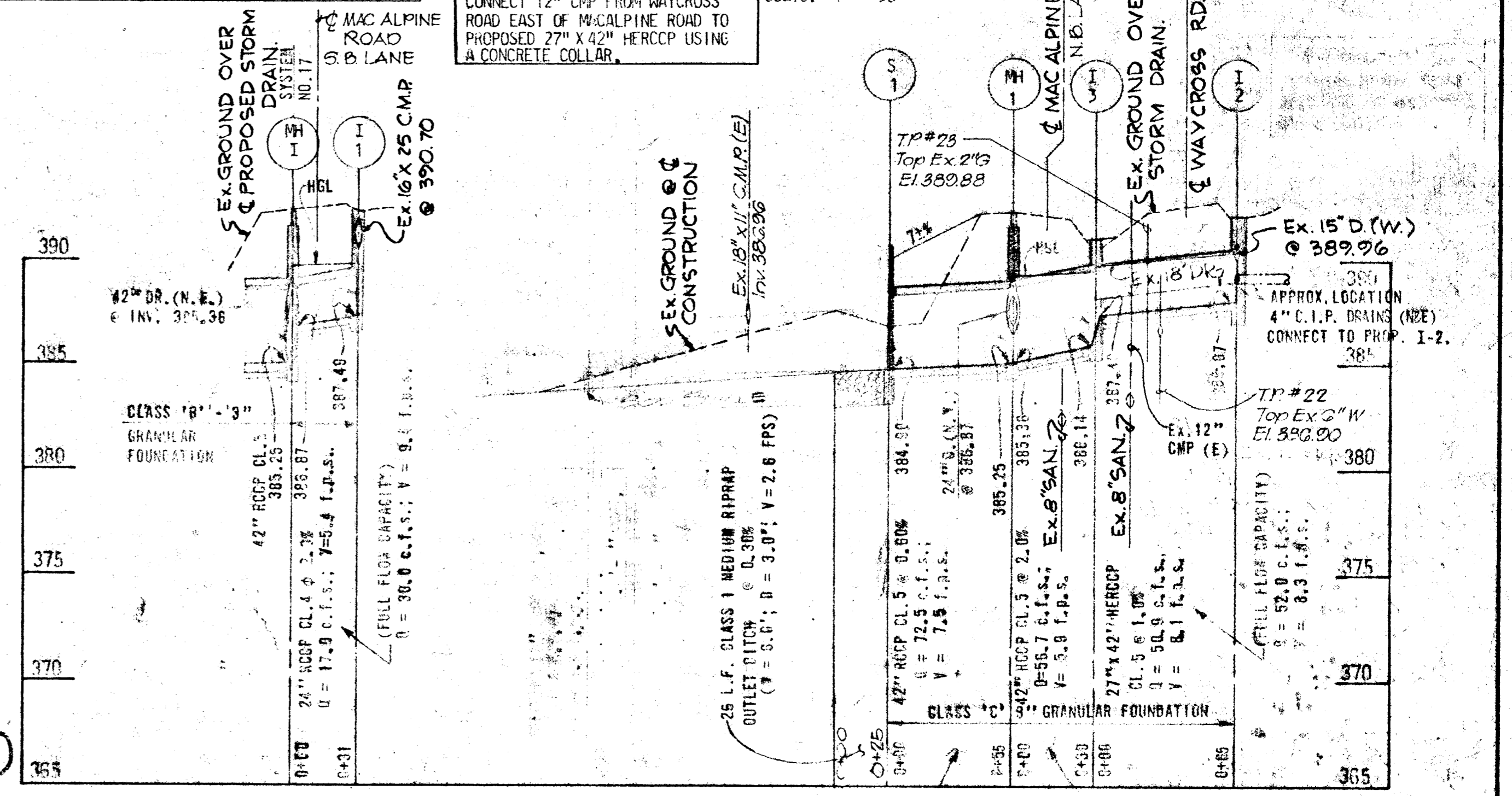
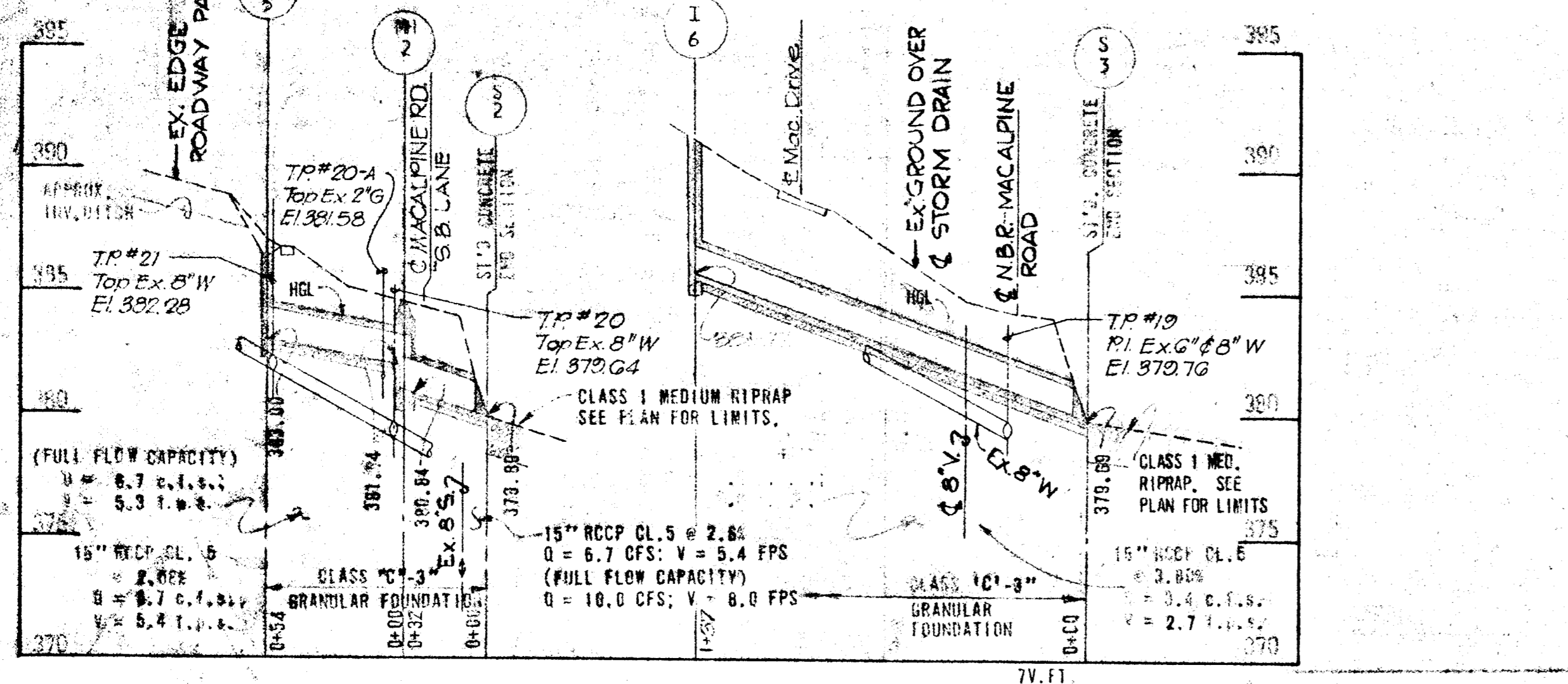
- NOTES:
- EXISTING 12" R.C.P. NORTH OF 3-4 TO BE REMOVED DURING CONSTRUCTION.
 - SIDE SLOPES OF RIPRAPPED OUTLET DITCH TO CONFORM TO EXIST. SLOPES.
 - EXISTING 18" H.C.C.P. - SYSTEM NO. 16 AND EXISTING 24" & 18" DRAINS SYSTEM NO. 17 SHALL BE REMOVED AS NECESSARY TO ACCOMPLISH THE PROPOSED WORK. EIGHT INCH BRICK BULKHEADS WILL BE CONSTRUCTED AT EACH END OF THE PIPES.
 - THE CONTRACTOR WILL REMOVE THE EXISTING SHROUDING BETWEEN S-1 AND S-1-1 AND WILL REPLANT SAME AFTER COMPLETION OF THE SITE LAYING OPERATION.
 - RIPPRAP MEDIAN CHANNEL SHALL BE PERFORMED FOLLOWING THE PLAN PROVIDED AND SHALL BE EXIST. DITCH GRADED AND REGRADED.

STRUCTURE SCHEDULE

NO.	TYPE	LOCATION	INV. IN	INV. OUT	TOP EL.	REMARKS
SYSTEM NO. 16						
1-1	STD. "K" INLET	STA. 10+66 - 3' LT.	387.49	382.36	H.C. DRWG. D-83 & D-95	
SYSTEM NO. 17						
1-2	STD. "K" INLET	STA. 11+42 - 46' RT.	388.07	382.18	H.C. DRWG. D-93 & D-95	
1-3	STD. "K" INLET	STA. 10+77 - 46' RT.	387.49	382.18	H.C. DRWG. D-93 & D-95	
MH-1	STD. TYPE "C"	STA. 10+46 - 20' RT.	385.36	385.25	387.38	FIG. 3.04
S-1	STD. TYPE "A"	STA. 8+66 - 22' LT.	384.90	389.00	387.00	FIG. 5.11

STRUCTURE SCHEDULE

NO.	TYPE	LOCATION	INV. IN	INV. OUT	TOP EL.	REMARKS
SYSTEM NO. 21						
1-4	STD. "K" INLET	STA. 10+74 - 110' LT.	383.00	386.4	H.C. DRWG. D-93 & D-95	
S-2	CONC. END SECT.	STA. 10+59 - 22' LT.	379.89	-	11.5.51 OR FIG. 5.52	
MH-2	STD. TYPE "B"	STA. 10+66 - 50' LT.	381.84	380.84	384.68	FIG. 3.03
SYSTEM NO. 23						
1-6	STD. "K" INLET	STA. 10+80 - 122' RT.	382.00	382.00	H.C. DRWG. D-93 & D-95	
S-3	CONC. END SECT.	STA. 10+82 - 6.5' LT.	379.66	-	FIG. 5.51 OR FIG. 5.52	
S-4	END SUPPORT WALL	STA. 12+33 - 33' LT.	381.62	382.66	H.C. DRWG. D-46	
S-5	END SUPPORT WALL	STA. 12+32 - 49' LT.	ADJUST IN FIELD	H.C. DRWG. D-46		
S-6	END SUPPORT WALL	STA. 11+20 - 31' LT.	381.24	382.48	H.C. DRWG. D-46	
S-7	END SUPPORT WALL	STA. 11+20 - 10' LT.	379.76	381.01	H.C. DRWG. D-46	



RECORD DRAWING
BY
KIDDE CONSULTANTS, INC.
DATE: DEC 21 1982



KIDDE CONSULTANTS, INC.
ENGINEERS • ARCHITECTS • PLANNERS
BALTIMORE, MARYLAND

DEPARTMENT OF PUBLIC WORKS
HOWARD COUNTY, MARYLAND
DIRECTOR, DEPARTMENT OF PUBLIC WORKS
CHIEF, BUREAU OF ENGINEERING

Charles E. Galia, Jr.
CHIEF DIVISION OF ROADS, BRIDGES, AND STORM DRAINAGE

CAPITAL PROJECT D-5-1018

STORM DRAINAGE IMPROVEMENTS
DUNLOGGIN - SYSTEMS NO. 16 & NO. 17
NO. 21 & NO. 23
ELECTION DISTRICT: ELLICOTT CITY NO. 2

DRAWING NO. 8 OF 8
SCALE AS SHOWN
DES. P.W.
DR. I.A.
CK. C.F.