

- NOTES:**
- 1- * THERMAL DIFFUSERS, SEE SCHEDULE
 - 2- THE VENTILATION SHELVE AND ALSO THE SUPPLY AND RETURN DUCTWORK IN THE THIRD FLOOR OFFICE REGION (LEVEL 2 & 3) OLD BLDG TO BE SOLIDIFIED
 - 3- PIPES 3" AND LARGER IN DIAMETER SHOULD UTILIZE NEOPRENE ISOLATORS IN THE PIPE HANGERS SUPPORTS
 - 4- ALL DUCTWORK TO BE CONSTRUCTED ACCORDING TO SWAGNA LOW PRESSURE DUCT STANDARDS WITH SEAL CLASSIFICATION B, 2" V/G STATIC PRESSURE
 - 5- ** ALL SOUNDLINE DUCTWORK TO BE 1" HIGH UNLESS OTHERWISE NOTED
 - 6- SEE DWG M-113

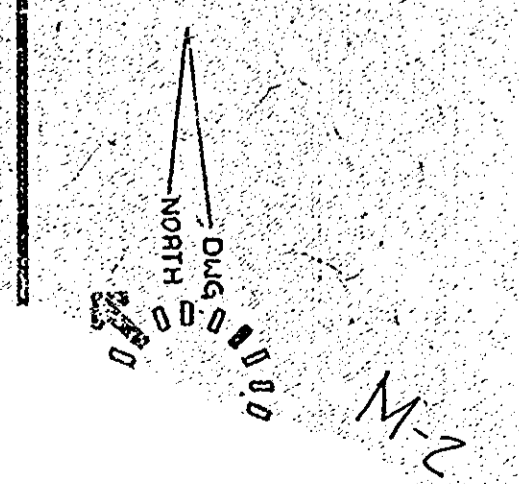
LEVEL 3 SCALE 1/8"=1'-0"

PHASE I PHASE II

LEVEL 3 SPACE NUMBERS & NOMENCLATURE

101 STAIR #1	204 MECHANICAL RM.	307 ORGAN'S COURT/	311 WAITING
102 INFORMATION LOBBY	323 COFFEE RM.	327 HEATING RM.	319 CLERICAL
303 VESTIBULE	326 DELIB.	348 JUDGE'S ANTIROOM	321 PASSAGE
304 COLONNAD	327 DELIB.	349 VESTIBULE	312 ELEVATOR #2 LOBBY
305 STAIR #2	328 MECH./ELEC. RM.	350 CONFERENCE/Waiting	329 ELEVATOR #3-PS&C
306 MECHANICAL RM.	329 CLOSET	351 WAITING	334 ELEVATOR #2 LOBBY
307 WITNESS/CONFERENCE	330 TELEPHONE RM.	352 MECH./ELEC. RM.	335 STAIR #6
308 VESTIBULE/COPY	331 OFFICE	353 PASSAGE	316 VENDING
309 CONFERENCE/HEARING	332 LAW LIBRARY	354 ASSISTANT ATT'Y	317 CORRIDOR
310 RECORDS	333 STAIR #4	355 ASSISTANT ATT'Y	318 RECORDS
311 STAIR #3	334 CUSTOMER	356 ASSISTANT ATT'Y	319 RECORDS
312 OFFICE	335 TOILET	357 ASSISTANT ATT'Y	320 CLOSET
313 OFFICE	336 SHIELD POINT	358 ASSISTANT ATT'Y	321 COMPUTER
314 OFFICE	337 ELEVATOR #1 LOBBY	359 ASSISTANT ATT'Y	322 PASSAGE
315 OFFICE	338 ELEVATOR #1-SECURE	360 CONFERENCE	323 CLERICAL
316 OFFICE	339 ELEVATOR #1 EQUIP.	361 ASSISTANT ATT'Y	324 CLOSET
317 CLERICAL	340 TRASH	362 ASSISTANT ATT'Y	325 TOILET
318 PUBLIC WAITING	341 WITNESS ROOM RM.	363 ASSISTANT ATT'Y	
319 MEN'S TOILET	342 INACTIVE RECORDS	364 ASSISTANT ATT'Y	
320 WOMEN'S TOILET	343 STAIR #5	365 SECRETARY/WAIT	
321 REGISTER OF WILLS	344 MECHANICAL RM.	366 SECRETARY/WAIT	
322 CLERK	345 MEN'S TOILET	367 CUSTOMER	
323 EVIDENCE VAULT	346 WOMEN'S TOILET	368 TELEPHONE RM.	

REVISION	DESCRIPTION	DATE
1	SEE DWG M20	2.11.83

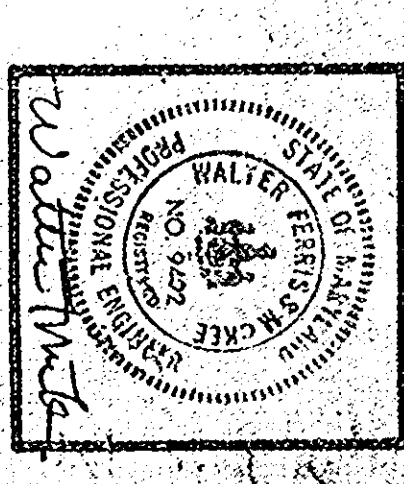
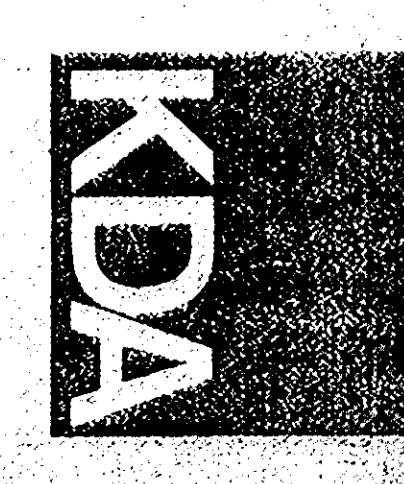


HOWARD COUNTY COURTHOUSE RENOVATION & ADDITION

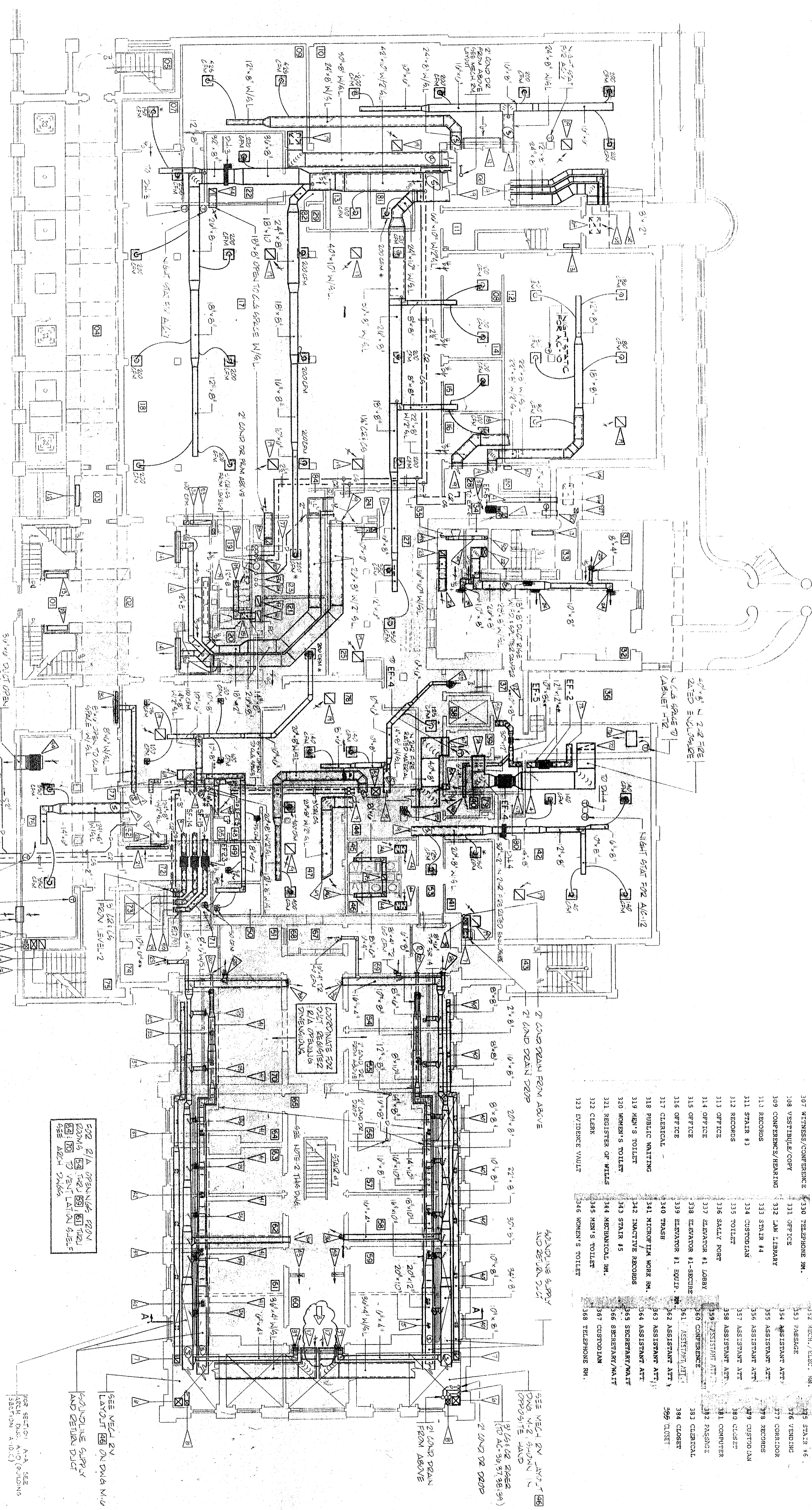
Ellicott City, Maryland

Capital Project C-6-0122

Partners Architects
 Designers
 608 Washington Plaza
 Potosi, Va. 22980
 (703) 437-4280



3.5.83
 REVISED:
 CO. #12 7-11



- NOTES:**
- 1- * THERMAL DIFFUSER, SEE SCHEDULE
 - 2- THE VENTILATION SHELF AND ALSO THE SUPPLY AND RETURN DUCTWORK IN THE TWO OFFICE SECTION (LEVEL 2 & 3) SHOULD BE SOUNDPROOFED
 - 3- PIPING 3" AND LARGER IN DIAMETER SHOULD UTILIZE NEPTUNE COULATORS IN THE PIPE HANGER SUPPORTS
 - 4- ALL DUCTWORK TO BE CONSTRUCTED ACCORDING TO SWAGNA LOW PRESSURE DUCT STANDARDS WITH SEAL CLASSIFICATION B, 2 V/4 STATIC PRESSURE
 - 5- ** ALL SOUNDLINE DUCTWORK TO BE 1" THICK UNLESS OTHERWISE NOTED
 - 6- SEE DWG M10

LEVEL 3 SCALE 1/8"=1'-0"

PHASE I PHASE II

LEVEL 3 SPACE NUMBERS & NOMENCLATURE

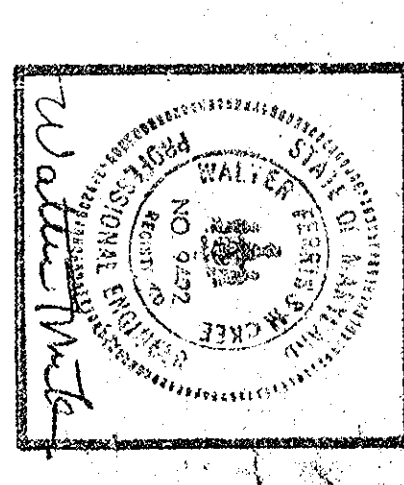
301 STAIR #1	317 BREAK ROOM	333 WAITING
302 INFORMATION LOBBY	318 MECHANICAL RM.	334 CLERICAL
303 VESTIBULE	319 COFFEE RM.	335 PASSAGE
304 COLONNAD	320 BELTED	336 ELEVATOR #2 LOBBY
305 STAIR #2	321 BELTED	337 ELEVATOR #2 LOBBY
306 MECHANICAL RM.	322 MCH. / ELEC. RM.	338 ELEVATOR #2 LOBBY
307 WAITING/CONFERENCE	323 CLOSET	339 WAITING
308 VESTIBULE/COPY	324 TELEPHONE RM.	340 CONFERENCE WAITING
309 CONFERENCE/HEARING	325 ELEVATOR #1 LOBBY	341 ELEVATOR #2 LOBBY
310 RECORDS	326 ELEVATOR #1 LOBBY	342 ELEVATOR #2 LOBBY
311 STAIR #3	327 SALES ROOM	343 ELEVATOR #2 LOBBY
312 RECORDS	328 ELEVATOR #1 LOBBY	344 ELEVATOR #2 LOBBY
313 OFFICE	329 ELEVATOR #1 LOBBY	345 ELEVATOR #2 LOBBY
314 OFFICE	330 ELEVATOR #1 LOBBY	346 ELEVATOR #2 LOBBY
315 OFFICE	331 ELEVATOR #1 LOBBY	
316 OFFICE	332 ELEVATOR #1 LOBBY	
317 CLERICAL	333 ELEVATOR #1 LOBBY	
318 PUBLIC WAITING	334 ELEVATOR #1 LOBBY	
319 MEN'S TOILET	335 ELEVATOR #1 LOBBY	
320 WOMEN'S TOILET	336 ELEVATOR #1 LOBBY	
321 REGISTER OF MAILS	337 ELEVATOR #1 LOBBY	
322 CLERK	338 ELEVATOR #1 LOBBY	
323 EVIDENCE VAULT	339 ELEVATOR #1 LOBBY	
	340 ELEVATOR #1 LOBBY	
	341 ELEVATOR #1 LOBBY	
	342 ELEVATOR #1 LOBBY	
	343 ELEVATOR #1 LOBBY	
	344 ELEVATOR #1 LOBBY	
	345 ELEVATOR #1 LOBBY	
	346 ELEVATOR #1 LOBBY	

REVISION	DESCRIPTION	DATE
1	SEE DWG M20	2-11-03

HOWARD COUNTY COURTHOUSE RENOVATION & ADDITION

Ellicott City, Maryland Capital Project C-6-0122

KDA
Partners Architects
606 Washington Plaza
Baltimore, MD 21201
(703) 437-1280



3/1/03
REVISED:
3/1/03 7:11