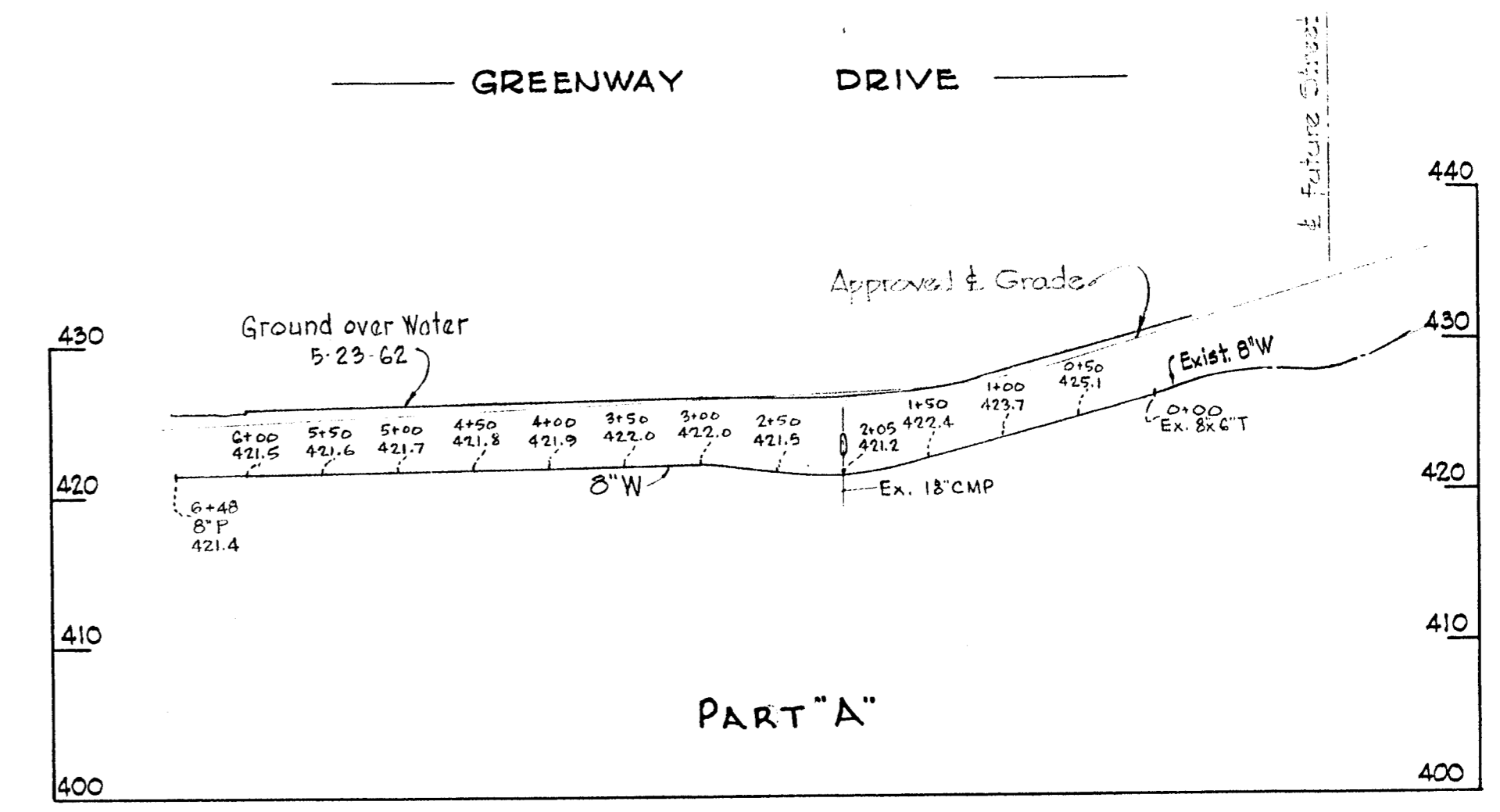


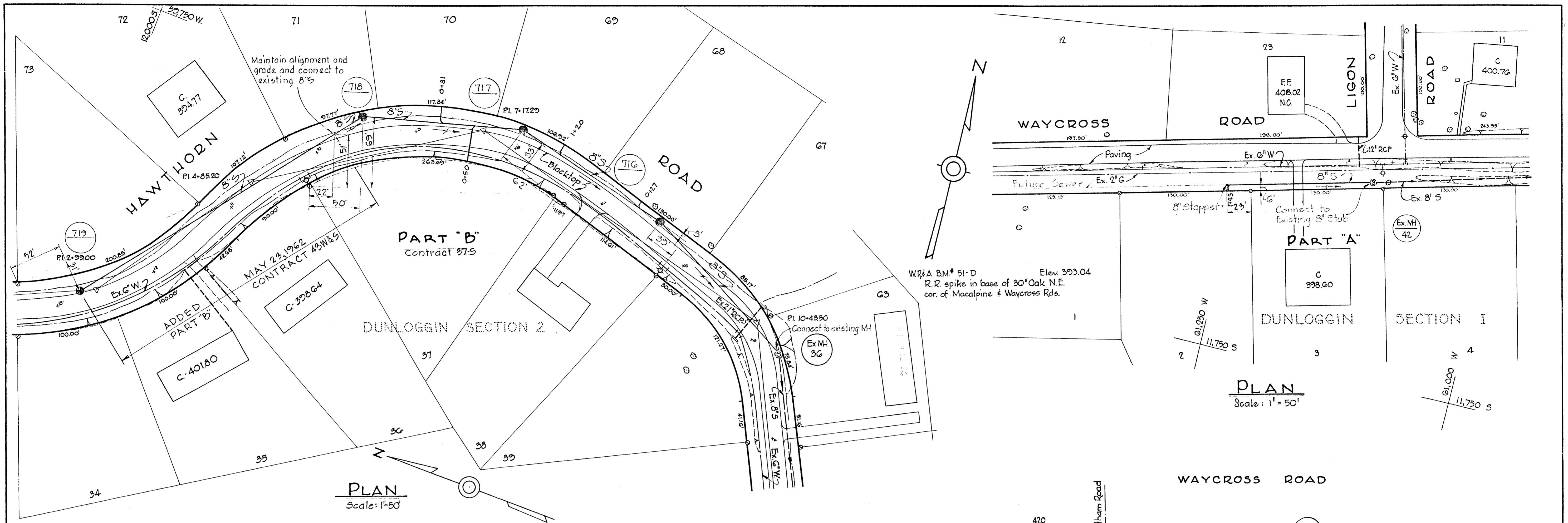
PLAN  
Scale: 1" = 50'



PROFILE  
Scale: H: 1" = 100'  
V: 1" = 10'

AS BUILT  
"BRINKLEIGH"  
SECTION G  
PART "A"  
Contract 43-W&S  
C281H-z-01

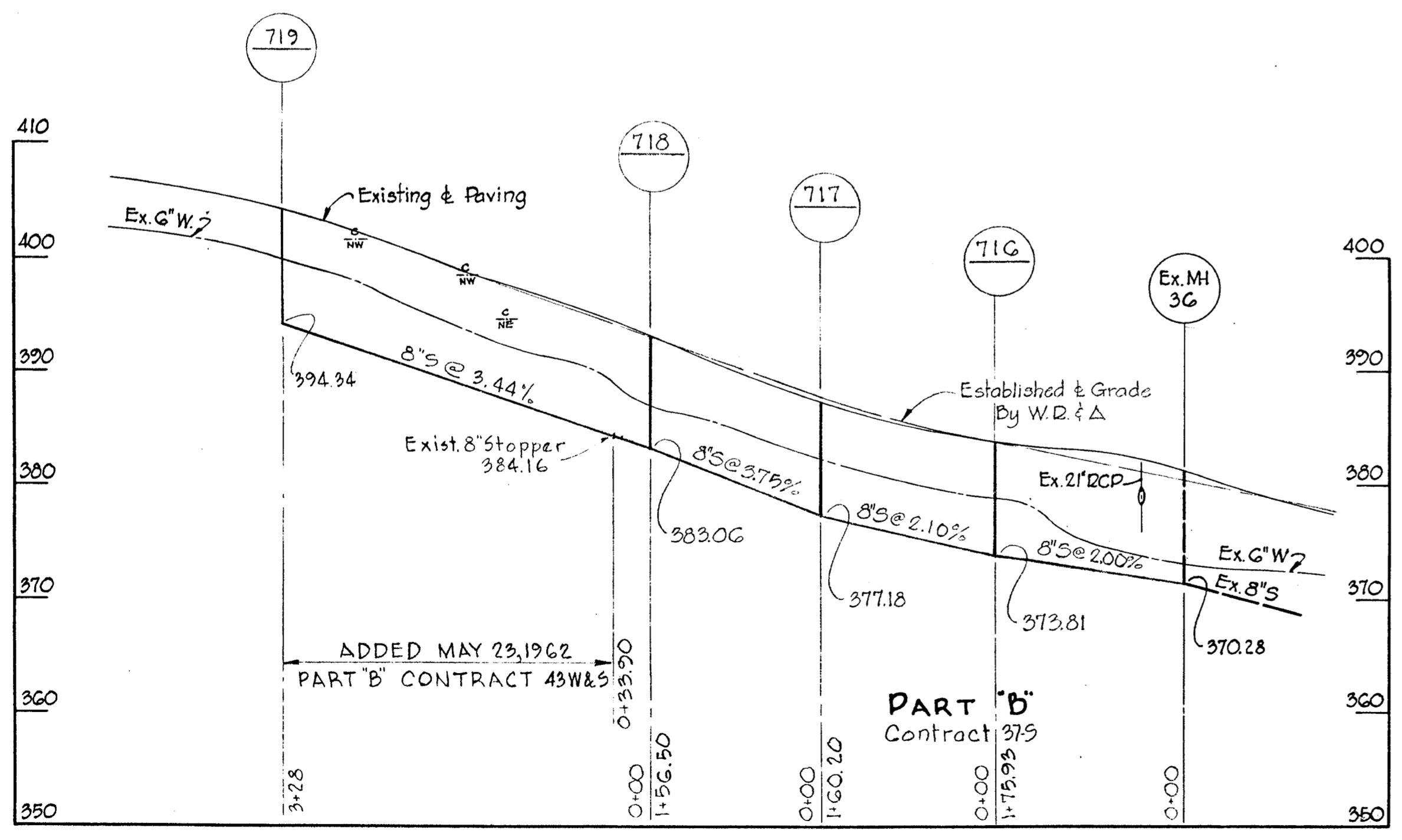
WHITMAN, REQUARDT & ASSOCIATES ENGINEERS 1304 ST. PAUL ST. BALTIMORE, MARYLAND	HOWARD COUNTY METROPOLITAN COMMISSION DATE: 5-25-62 <i>Carl W. Meyer</i> CHIEF ENGINEER	CONTRACT NO. 43-W&S	PLAN & PROFILE OF WATER MAINS	ELLICOTT CITY SUB - DISTRICT	DRAWING NO. 1 OF 4 SCALE AS SHOWN 3 SW 43 4 SW 43 FB. 2450
---	--	---------------------	----------------------------------	------------------------------	--



W.R.&A. BM #51-C Elev. 372.42  
 RR. spike in root 24" Oak 125'± N. of inter-  
 section of Hawthorn & Crescent Rds.

12,200 S  
 60,230 W

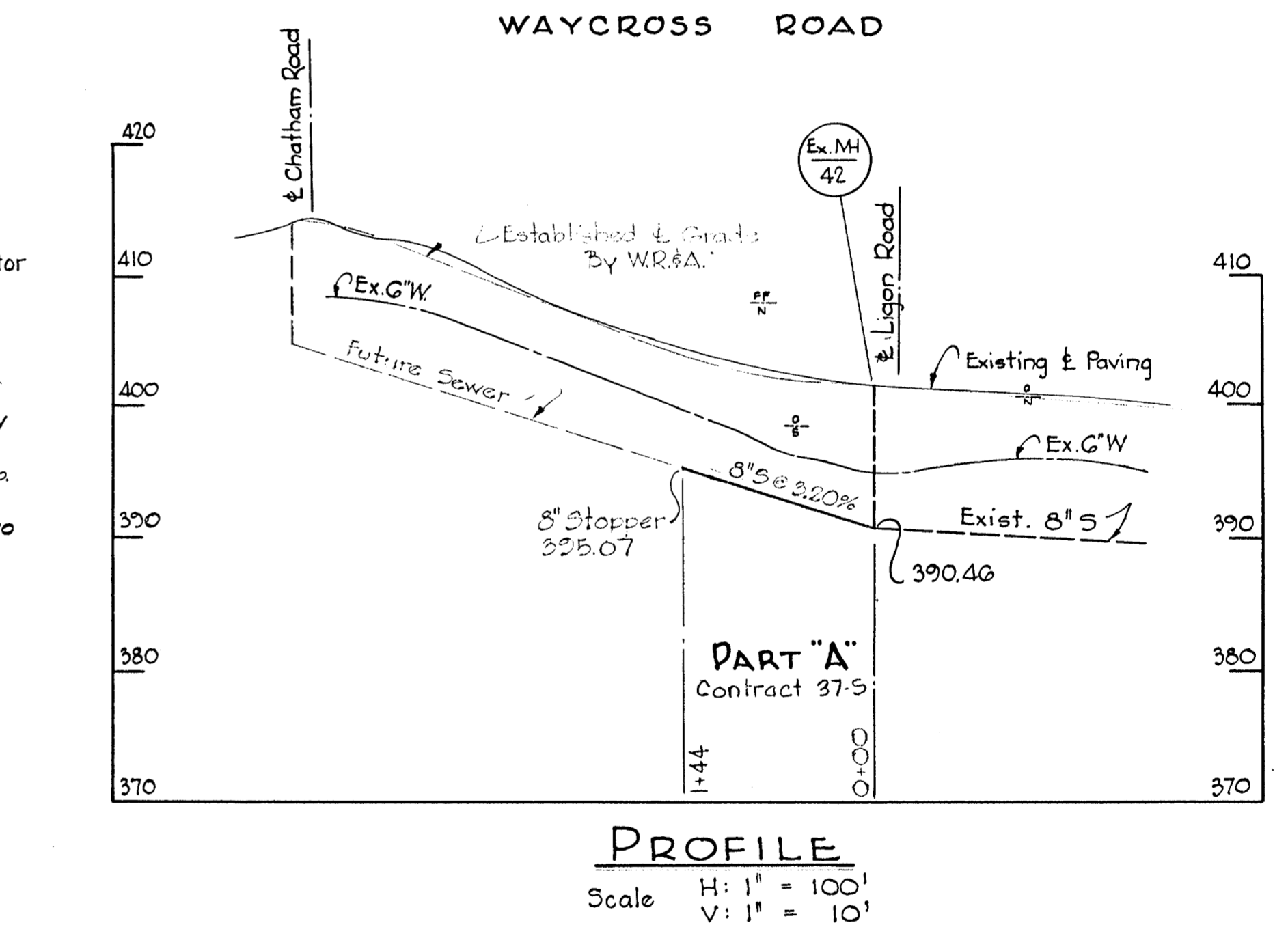
HAWTHORN ROAD



**PROFILE**  
 Scale: H: 1" = 100'  
 V: 1" = 10'

**GENERAL NOTES**

1. Approximate location of existing mains are shown. The Contractor shall take all necessary precautions to protect the existing mains and services and maintain uninterrupted supply. Any damage incurred shall be repaired immediately.
2. All pipe elevations shown are invert elevations.
3. The Contractor shall locate existing utilities a minimum of two weeks in advance of construction operations in vicinity of utilities.
4. For all standard details see Standards bound in Specifications.
5. Block all fittings with concrete. See Standard Details.
6. Unless otherwise noted, all 8" W to be Class 22 C.I.P. Water mains to have a minimum of 3 1/2' cover unless otherwise noted.



**PROFILE**  
 Scale: H: 1" = 100'  
 V: 1" = 10'

WHITMAN, REQUARDT & ASSOCIATES  
 ENGINEERS  
 1304 ST. PAUL ST.  
 BALTIMORE, MARYLAND

HOWARD COUNTY METROPOLITAN COMMISSION  
 DATE: Oct. 23, 1961  
 Chief Engineer: Carl W. Meyer

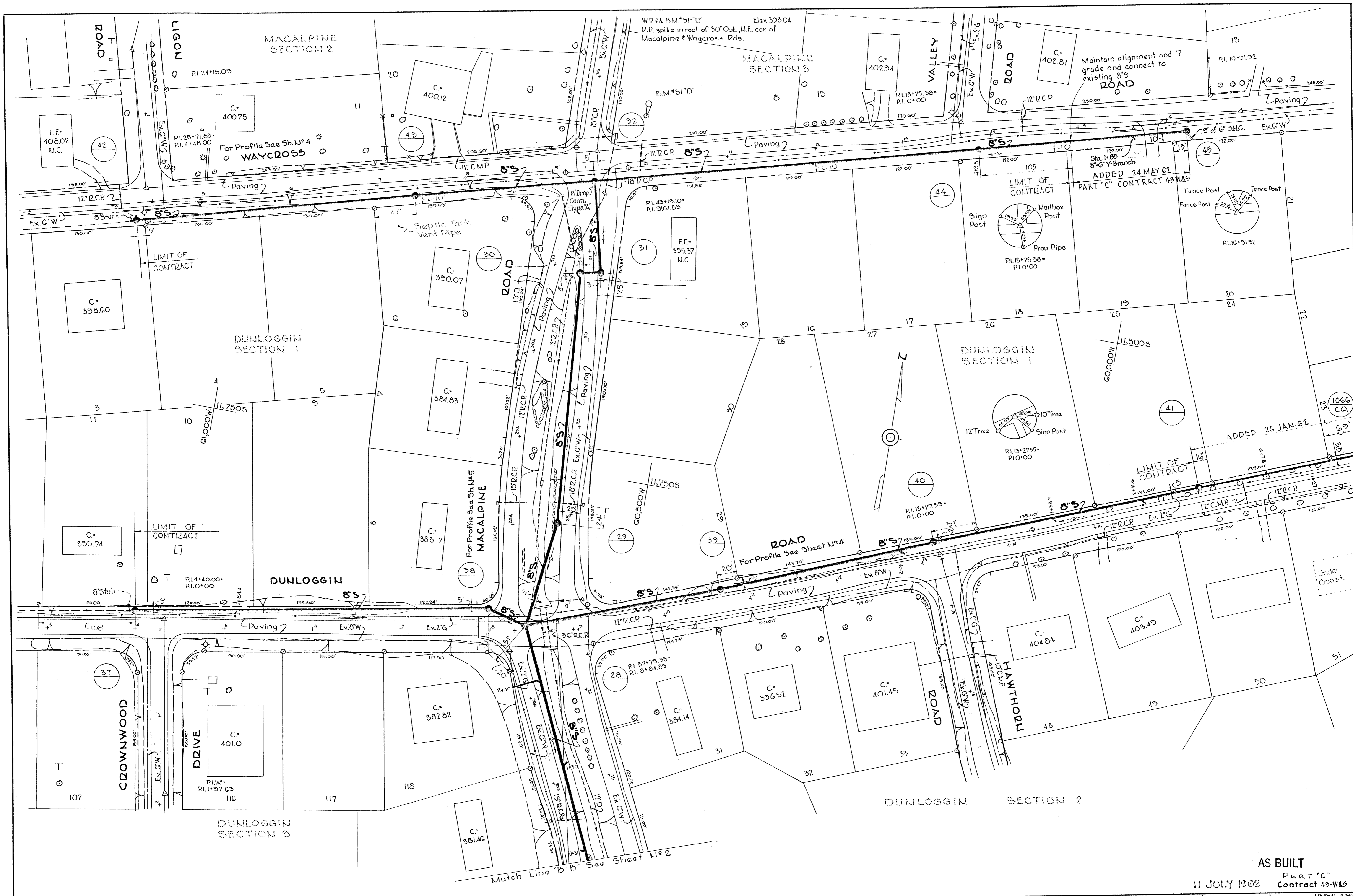
CONTRACT NO. 43W&S-37-5

PLANS & PROFILES OF  
 SEWER MAIN EXTENTIONS

ELLCOTT CITY SUB-DISTRICT

DRAWING NO. 2 OF 4  
 SCALE AS SHOWN

PART "B"  
 Contract No. 43W&S



AS BUILT  
 11 JULY 1962  
 PART "C"  
 Contract 43-W45

WHITMAN, REQUARDT & ASSOCIATES  
 ENGINEERS  
 1304 ST. PAUL ST.  
 BALTIMORE, MARYLAND

HOWARD COUNTY METROPOLITAN COMMISSION  
 Jan. 29, 1960  
 DATE  
*Carl W. Meyer*  
 CHAIRMAN

CONTRACT NO. 43W45  
 15-S

PLAN OF  
 SEWER MAIN EXTENSIONS

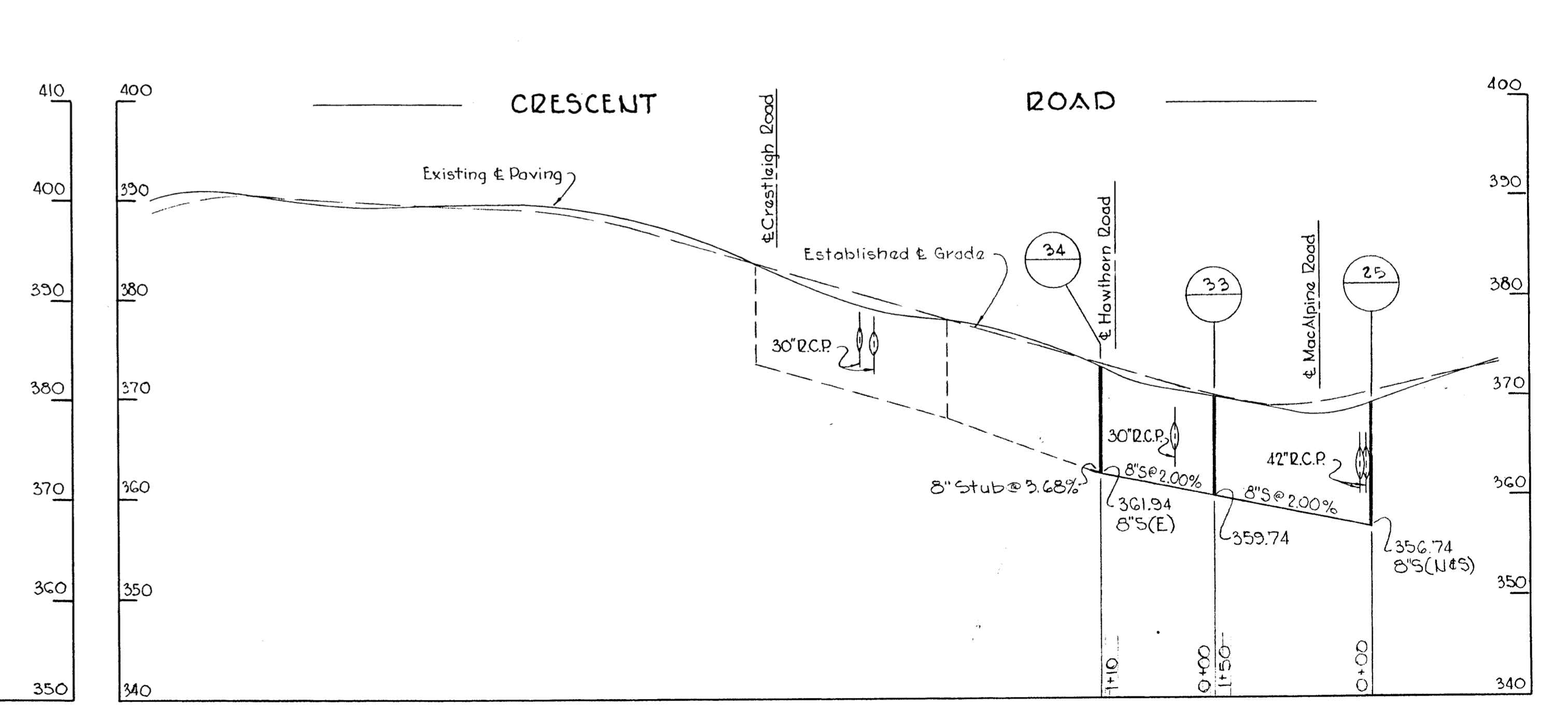
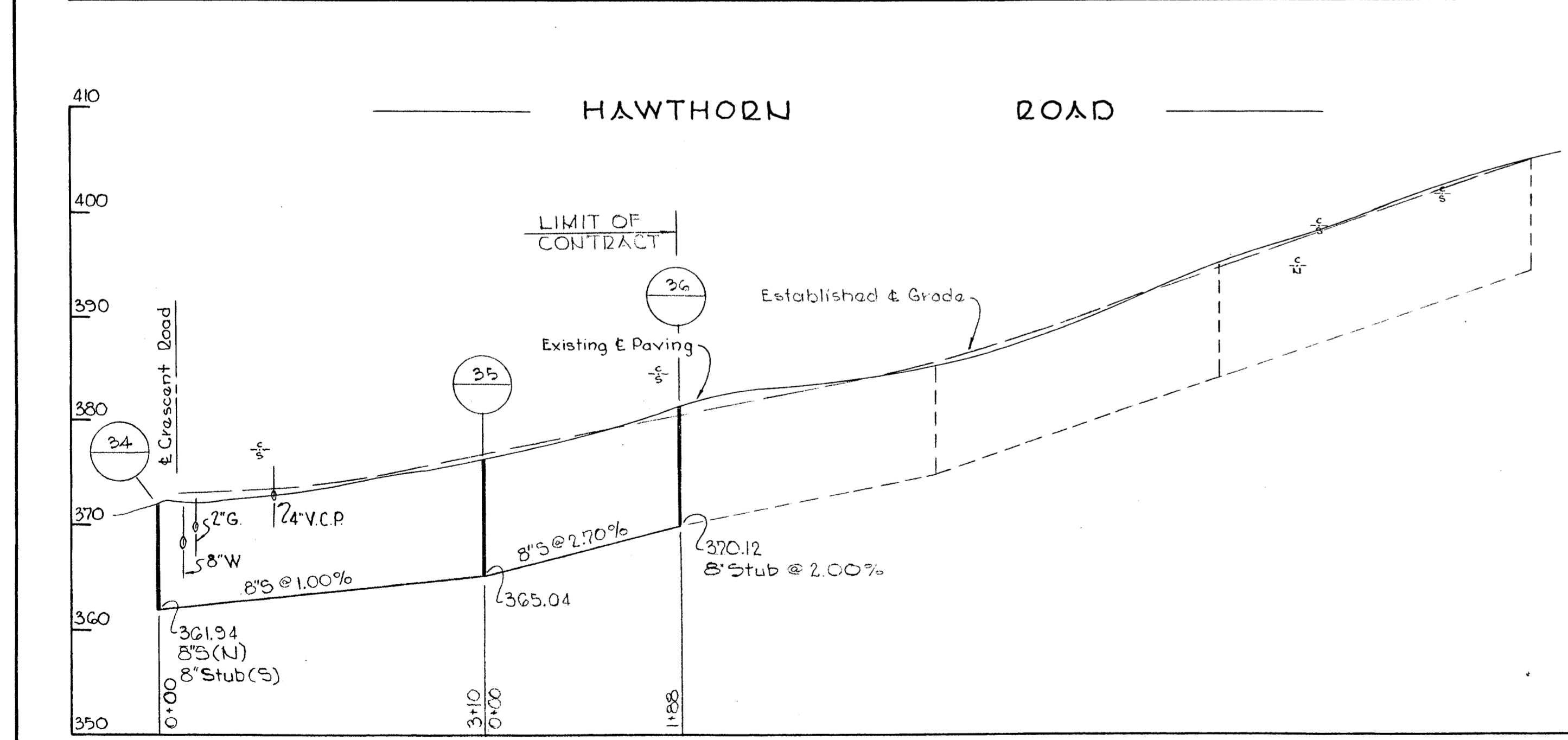
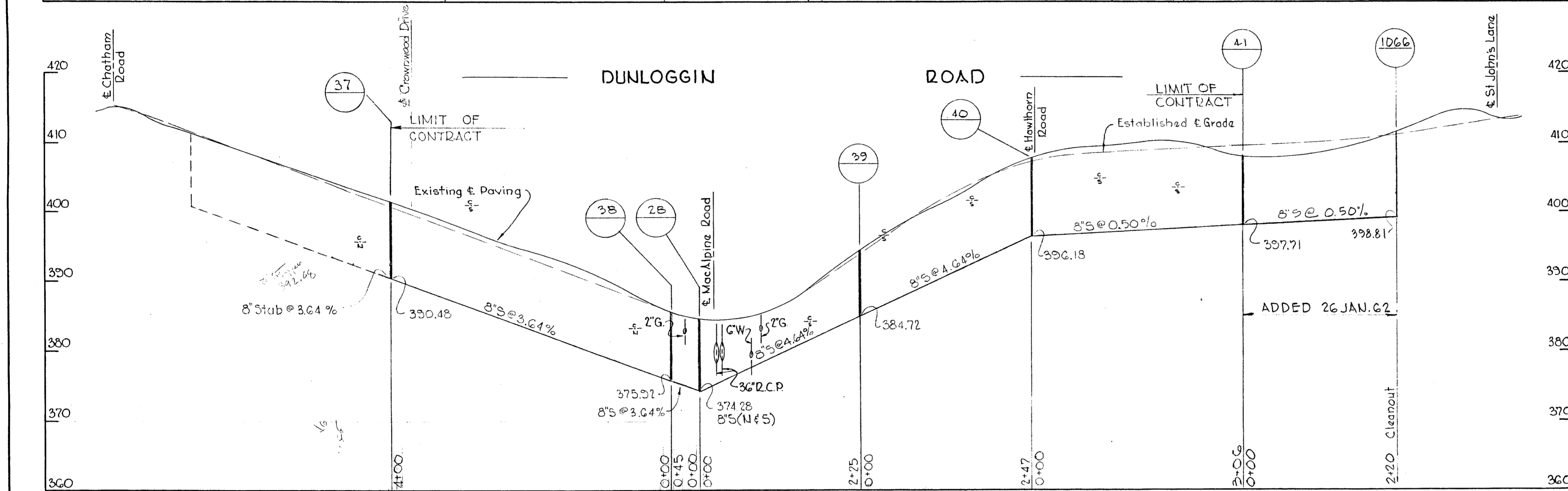
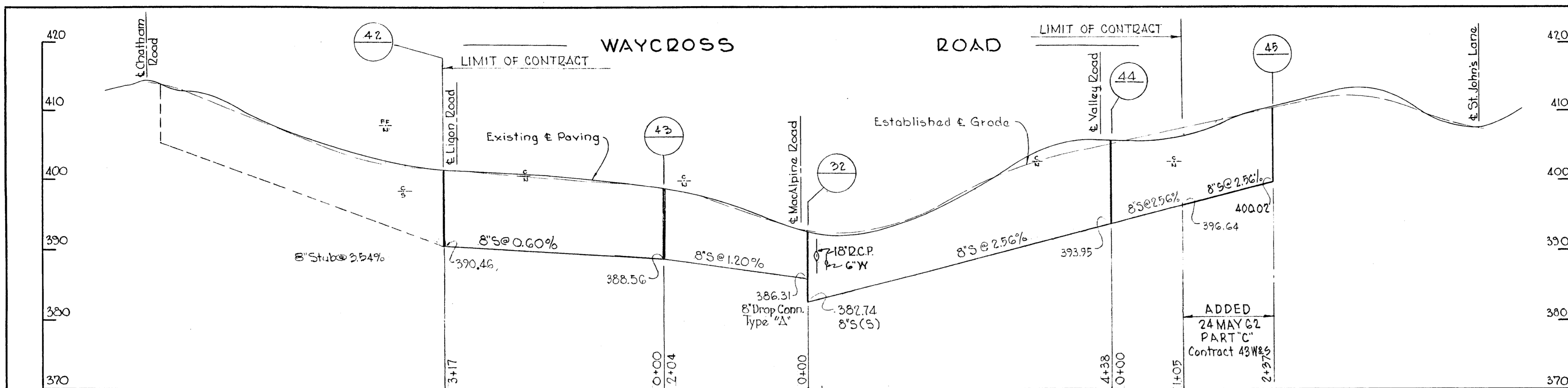
ELLICOTT CITY SUB-DISTRICT

DRAWING NO. 3  
 OF 4  
 SCALE 1"=50'

WO484B-2

Feb. 1, 1960  
 REV. JAN. 25, 1962  
 REV. MAY 24, 1962





AS BUILT  
11 JULY 1962  
PART "C"  
Contract 43W&S

WHITMAN, REQUARDT & ASSOCIATES  
ENGINEERS  
1304 ST. PAUL ST.  
BALTIMORE, MARYLAND

HOWARD COUNTY METROPOLITAN COMMISSION  
Jan. 29, 1960  
DATE  
*Carl W. Meyer*  
CHAIRMAN

CONTRACT NO. 43W&S  
15-S

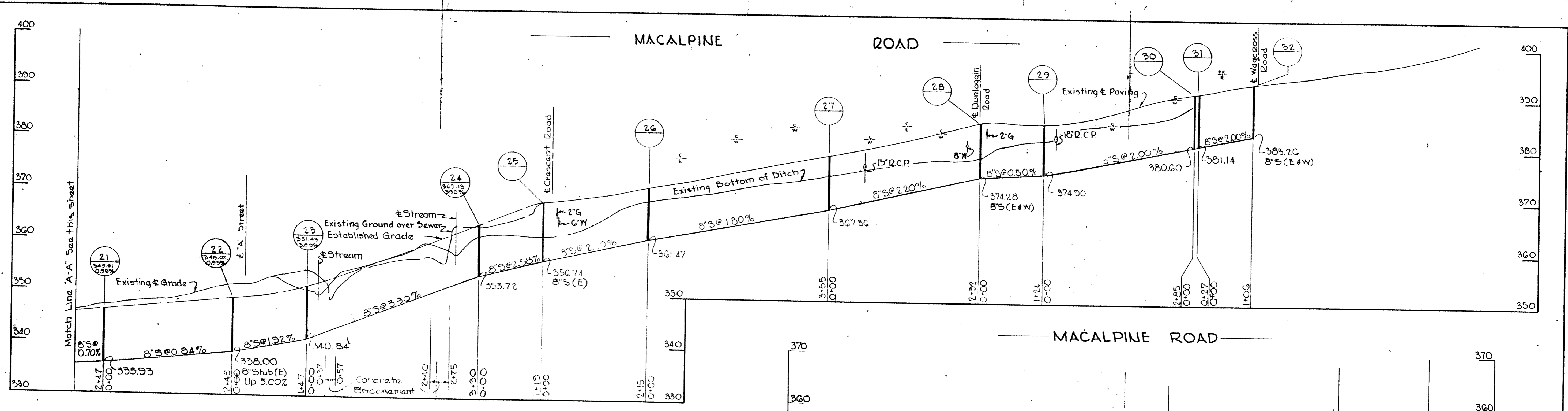
PROFILES OF  
SEWER MAIN EXTENSIONS

ELLICOTT CITY SUB-DISTRICT

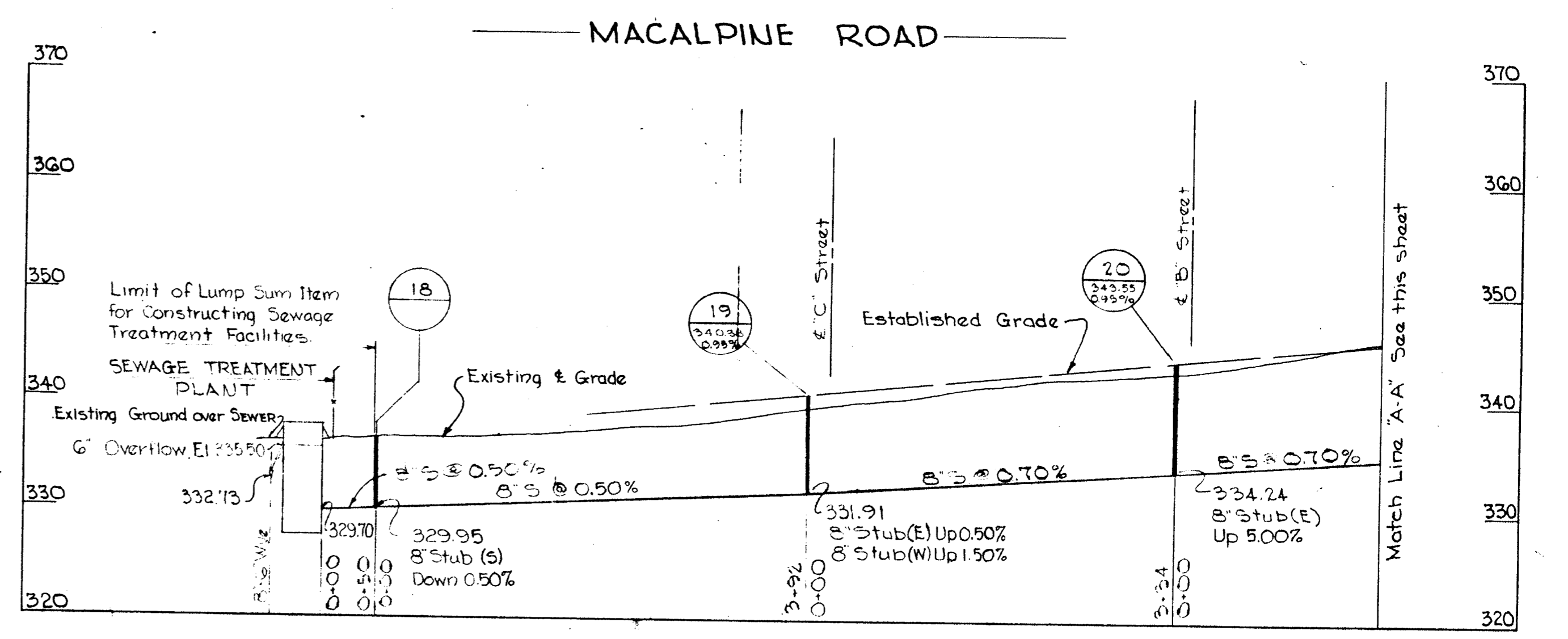
DRAWING  
NO. 4  
OF 4

SCALE  
H-1"=100'  
V-1"=10'

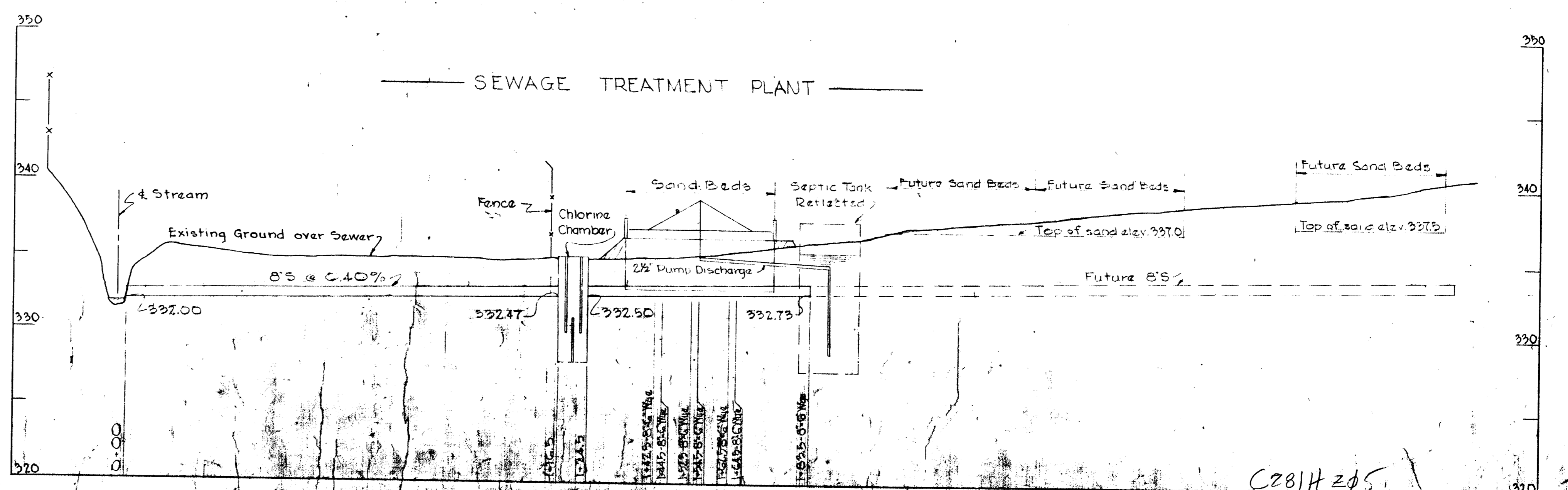




**PROFILE**  
 Hor. 1"=100'  
 Vert. 1"=10'



**PROFILE**  
 Hor. 1"=100'  
 Vert. 1"=10'



**PROFILE**  
 Hor. 1"=20'  
 Vert. 1"=5'

C281H 205

AS BUILT

WHITMAN, REQUARDT & ASSOCIATES ENGINEERS 1304 ST. PAUL ST. BALTIMORE, MARYLAND	HOWARD COUNTY METROPOLITAN COMMISSION DATE: July 29, 1960 CHAIRMAN: [Signature]	CONTRACT NO. 3-5	PROFILES OF SEWER MAIN EXTENSIONS	ELLICOTT CITY SUB-DISTRICT	DRAWING NO. 5 OF 2 SHOWN
---	---	------------------	--------------------------------------	----------------------------	-----------------------------

FEB 11, 1960