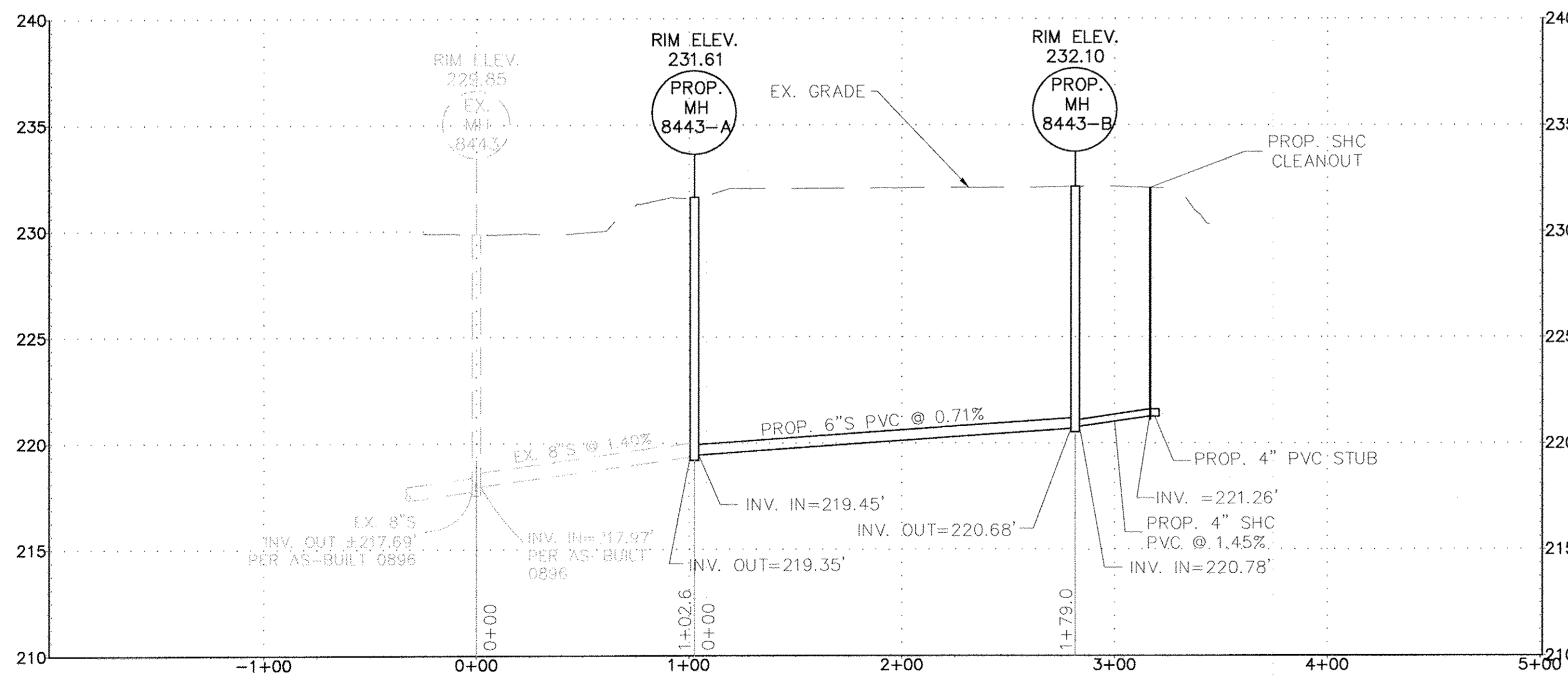
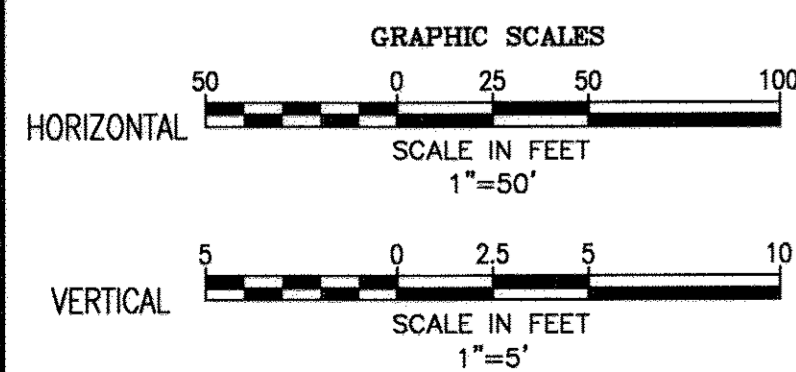


**PLAN - 6" SEWER 7055 MONTGOMERY ROAD**  
SCALE: HORIZ. 1"=50'



**PROFILE - 6" SEWER 7055 MONTGOMERY ROAD**  
SCALE: HORIZ. 1"=50'  
VERT. 1"=5'

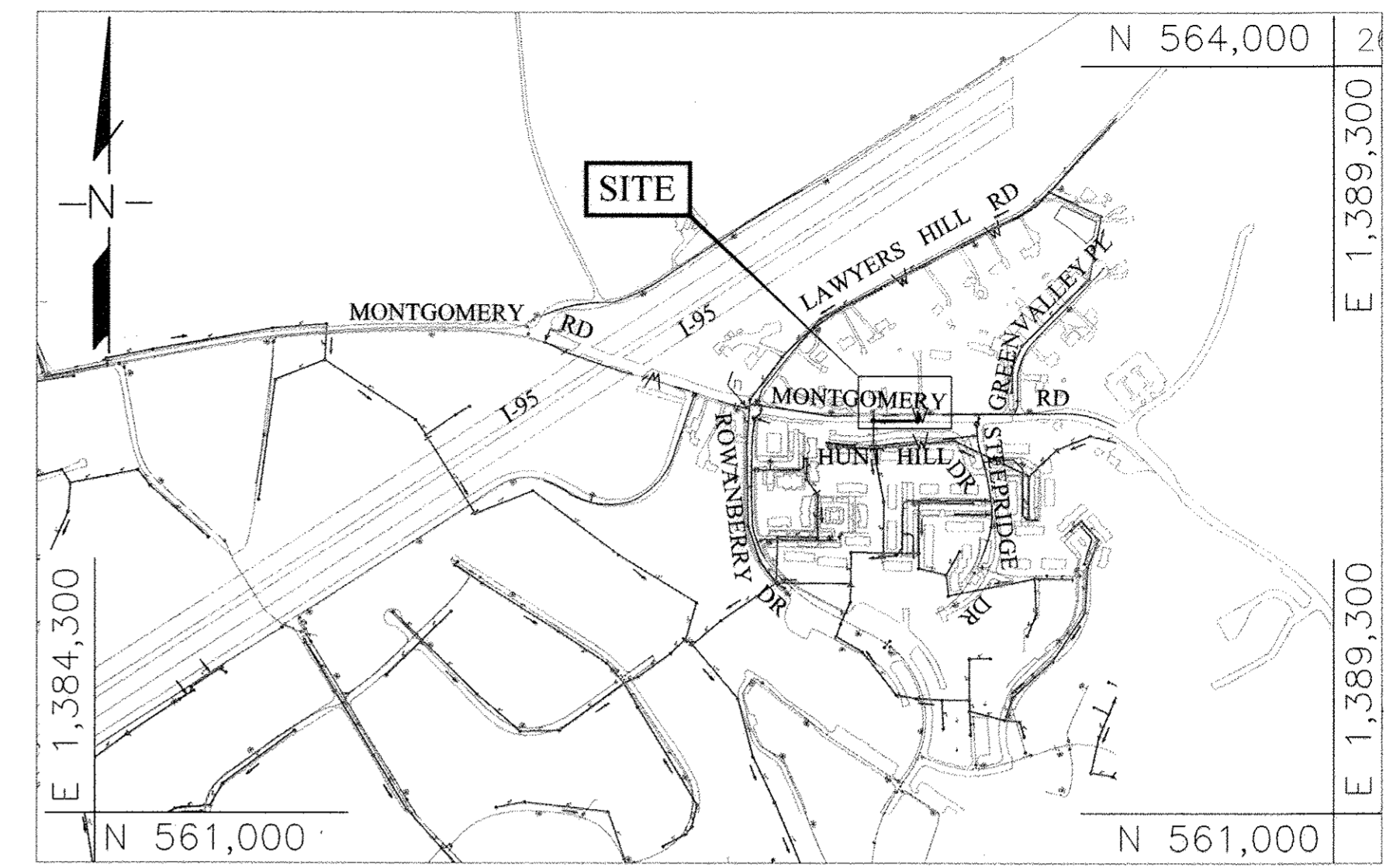


SEWER MANHOLE SCHEDULE					
NO.	TYPE	LOCATION	RIM EL.	INV. IN	INV. OUT
SMH	EX. MANHOLE 8443	5847-35 HUNT HILL DRIVE	229.85	217.97	217.69
SMH	PROP. MANHOLE 8443-A	7049 MONTGOMERY ROAD	231.61	219.45	219.35
SMH	PROP. MANHOLE 8443-B	7055 MONTGOMERY ROAD	232.08	220.78	220.68

**RECORD DRAWINGS**

TO THE BEST OF OUR KNOWLEDGE AND BELIEF, BASED ON INFORMATION BY OTHERS, THESE RECORD DRAWINGS SUBSTANTIALLY REPRESENT THE PROJECTS AS CONSTRUCTED.

MICHAEL BAKER INTERNATIONAL  
BY: *[Signature]* 5/22/18



**LOCATION MAP**  
SCALE: 1"=600'

**GENERAL NOTES:**

- PART I
- APPROXIMATE LOCATIONS OF EXISTING MAINS ARE SHOWN. THE CONTRACTOR SHALL TAKE ALL NECESSARY PRECAUTIONS TO PROTECT EXISTING MAINS AND SERVICES AND MAINTAIN UNINTERRUPTED SERVICE. ANY DAMAGE INCURRED SHALL BE REPAIRED IMMEDIATELY TO THE SATISFACTION OF THE ENGINEER AT THE CONTRACTOR'S EXPENSE.
  - TOPOGRAPHIC INFORMATION TAKEN FROM HOWARD COUNTY GIS.
  - HORIZONTAL AND VERTICAL SURVEY CONTROLS:  
THE COORDINATES SHOWN ON THE DRAWINGS ARE BASED ON MARYLAND STATE REFERENCE SYSTEM NAD '83/'91 AS PROJECTED BY HOWARD COUNTY GEODETIC CONTROL STATIONS:  
0021, N 562745.797, E 1386542.119, ELEV. 226.200'  
3844, N 562977.624, E 1386288.139, ELEV. 223.379'  
ALL VERTICAL CONTROLS ARE BASED ON NAVD '88.
  - ALL PIPE ELEVATIONS SHOWN ARE INVERT ELEVATIONS UNLESS OTHERWISE NOTED ON THE PLANS.
  - CLEAR ALL UTILITIES BY A MINIMUM OF 12 INCHES. CLEAR ALL POLES BY 5'-0" MINIMUM OR TUNNEL AS REQUIRED UNLESS OTHERWISE NOTED. THE OWNER HAS CONTACTED THE UTILITY COMPANIES AND HAS MADE ARRANGEMENTS FOR BRACING OF POLES SHOWN ON THE DRAWINGS. IN THE EVENT THE CONTRACTOR'S WORK REQUIRES THE BRACING OF ADDITIONAL POLES, ANY COST INCURRED BY THE OWNER FOR THE BRACING OF ADDITIONAL POLES OR DAMAGES SHALL BE DEDUCTED FROM MONIES OWED TO THE CONTRACTOR. THE CONTRACTOR SHALL COORDINATE WITH THE UTILITY COMPANIES TO SCHEDULE THE BRACING OF THE POLES.
  - FOR DETAILS NOT SHOWN ON THE DRAWING, AND FOR MATERIALS AND CONSTRUCTION METHODS, USE HOWARD COUNTY DESIGN MANUAL, VOLUME IV, STANDARD SPECIFICATIONS AND DETAILS FOR CONSTRUCTION (LATEST EDITION). THE CONTRACTOR SHALL HAVE A COPY OF VOLUME IV ON THE JOB.
  - NO TEST PITS HAVE BEEN PERFORMED FOR THIS PROJECT. EXISTING UTILITIES IN THE VICINITY OF THE PROPOSED WORK FOR WHICH TEST PITS HAVE NOT BEEN DUG SHALL BE LOCATED BY THE CONTRACTOR TWO WEEKS IN ADVANCE OF CONSTRUCTION OPERATIONS AT HIS OWN EXPENSE.
  - THE CONTRACTOR SHALL NOTIFY THE FOLLOWING UTILITY COMPANIES OR AGENCIES AT LEAST FIVE WORKING DAYS BEFORE STARTING WORK SHOWN ON THESE PLANS:
- |                              |                |
|------------------------------|----------------|
| AT&T                         | 1.800.252.1133 |
| BGE (CONSTRUCTION SERVICES)  | 410.637.8713   |
| BGE (EMERGENCY)              | 410.685.0123   |
| BUREAU OF UTILITIES          | 410.313.4900   |
| COLONIAL PIPELINE COMPANY    | 410.795.1390   |
| MSS UTILITY                  | 1.800.257.7777 |
| STATE HIGHWAY ADMINISTRATION | 410.531.5533   |
| VERIZON                      | 1.800.743.0033 |
| MCI WORLDCOM                 | 1.800.624.9675 |
- TREES AND SHRUBS ARE TO BE PROTECTED FROM DAMAGE TO THE MAXIMUM EXTENT. TREES AND SHRUBS LOCATED WITHIN THE CONSTRUCTION STRIP ARE NOT TO BE REMOVED OR DAMAGED BY THE CONTRACTOR.
  - THE CONTRACTOR SHALL REMOVE TREES, STUMPS, AND ROOTS ALONG THE LINE OF EXCAVATION. PAYMENT FOR SUCH REMOVAL SHALL BE INCLUDED IN THE UNIT PRICE BID FOR CONSTRUCTION OF THE SEWER.
  - THE CONTRACTOR SHALL NOTIFY THE BUREAU OF HIGHWAYS, HOWARD COUNTY, AT (410)-313-7450 AT LEAST FIVE WORKING DAYS BEFORE OPEN CUTTING OR BORING/JACKING OF ANY COUNTY ROAD FOR LAYING WATER/SEWER MAINS OR HOUSE CONNECTIONS. THE APPROVAL OF THESE DRAWINGS WILL CONSTITUTE COMPLIANCE WITH DPW REQUIREMENTS PER SECTION 18.114(A) OF THE HOWARD COUNTY CODE.

PART III - SEWER

- ALL PROPOSED 8" SEWER MAINS SHALL BE DUCTILE IRON PIPE, THICKNESS CLASS 54, WITH RESTRAINED JOINTS USING MEGALUG, OR EQUAL, WEDGE ANCHORS, OR PIPE MANUFACTURER'S RESTRAINED JOINT PIPE. 4" SEWER SHC SHALL BE PVC, C900, UNLESS OTHERWISE NOTED.
- ALL MANHOLES SHALL BE 4'-0" INSIDE DIAMETER UNLESS OTHERWISE NOTED.
- FORCE MAINS SHALL BE D.I.P. ONLY.
- MANHOLES SHOWN WITH 12" AND 16" WALLS ARE FOR BRICK MANHOLES ONLY.
- MANHOLES DESIGNATED W.T. IN PLAN AND PROFILE SHALL HAVE WATER-TIGHT FRAME AND COVER, STANDARD DETAIL C-5.52, WHERE WATER-TIGHT MANHOLE FRAMES AND COVERS ARE USED, SET TOP OF FRAME 1'-6" ABOVE FINISHED GRADE UNLESS OTHERWISE NOTED ON THE DRAWINGS.
- HOUSE(S) WITH THE SYMBOL "C.N.S." INDICATES THAT THE CELLAR CANNOT BE SERVED.

SEQUENCE OF CONSTRUCTION

- A PRE-CONSTRUCTION MEETING MUST OCCUR WITH THE HOWARD COUNTY DEPARTMENT OF PUBLIC WORKS, CONSTRUCTION INSPECTION DIVISION (CID), 410-313-1855 AFTER THE FUTURE LOD AND PROTECTED AREAS ARE MARKED CLEARLY IN THE FIELD.
- ALL VEGETATIVE AND STRUCTURAL PRACTICES ARE TO BE INSTALLED ACCORDING TO THE PROVISIONS OF THE EROSION AND SEDIMENT CONTROL PLAN AND ARE TO BE IN CONFORMANCE WITH THE 2011 MARYLAND STANDARDS AND SPECIFICATIONS FOR SOIL EROSION AND SEDIMENT CONTROL, AND REVISIONS THERETO.
- WITHOUT DISRUPTING FLOW FROM THE EXISTING SEWER, CONSTRUCT DOGHOUSE MH 8443-A AND NEW SEWER. CONSTRUCT NEW SEWER FROM MH 8443-A TO MH 8443-B.
- TEST NEW SEWER.
- INSTALL 4" SHC FOR 7055 MONTGOMERY ROAD.
- RESTORE AND STABILIZE AREAS DISTURBED BY THE WORK.
- REMOVE EROSION AND SEDIMENT CONTROLS.

**AS-BUILT**

DEPARTMENT OF PUBLIC WORKS  
HOWARD COUNTY, MARYLAND

*[Signature]* 6/14/18  
DATE: 6/14/18  
CHIEF, BUREAU OF UTILITIES

*[Signature]* 6/14/18  
DATE: 6/14/18  
CHIEF, UTILITY DESIGN DIVISION

**Michael Baker INTERNATIONAL**  
MICHAEL BAKER INTERNATIONAL, INC.  
1304 Concourse Drive, Suite 200  
Linthicum, MD 21086-1014  
Phone: (410) 889-3400

PROFESSIONAL CERTIFICATION  
I HEREBY CERTIFY THAT THESE DOCUMENTS WERE PREPARED OR APPROVED BY ME, AND THAT I AM A DULY LICENSED PROFESSIONAL ENGINEER UNDER THE LAWS OF THE STATE OF MARYLAND.  
LICENSE NO.: 22602  
EXPIRATION DATE: 11/19/19  
EVAN R. ANDREWS, P.E.

DESIGN: MJ	1	AS-BUILT DRAWING	5/18/2018
DRAWN: MJ			
CHECKED: ERA			
DATE: 2/28/2018	NO.	REVISION	DATE

**PROP. 6" SEWER PLAN & PROFILE**

**MONTGOMERY ROAD SEWER**  
CAPITAL PROJECT NO.: S-8-6097  
CONTRACT NO.: 10-0896  
1ST ELECTION DISTRICT, HOWARD COUNTY, MD

SCALE AS SHOWN  
SHEET 1A OF 4