

| COORDINATE TABLE | | | |
|------------------|----------|-------------|-------------|
| STATION | BASELINE | NORTH | EAST |
| 0+00.00 | B #1 | 475533.2485 | 850500.7187 |
| 2+02.52 | B #1 | 475730.1780 | 850453.4628 |
| 6+04.01 | B #1 | 476120.5840 | 850359.7796 |
| 0+00.00 | B #2 | 476119.4021 | 850508.9492 |
| 0+50.00 | B #2 | 476069.8620 | 850515.7147 |
| 4+54.93 | B #2 | 475668.6540 | 850570.5060 |
| 5+50.00 | B #2 | 475574.4603 | 850583.3696 |
| 0+00.00 | B A | 475730.1780 | 850453.4628 |
| 2+00.00 | B A | 475766.6094 | 850650.1167 |
| 3+17.76 | B B | 475939.5415 | 850845.4662 |
| 6+62.73 | B 3 | 475067.4600 | 850450.4100 |
| 0+00.00 | B 4 | 475207.3387 | 850492.1311 |
| 0+75.00 | B 4 | 475132.6013 | 850498.6238 |
| +1+60.00 | B 4 | 475132.6754 | 850573.5934 |

| REFERENCES | |
|--|----------|
| DESCRIPTION | SHT. NO. |
| STORM DRAIN PROFILES | 6 |
| PIPE SCHEDULE | 6 |
| STRUCTURE SCHEDULE | 6 |
| MAINTENANCE OF TRAFFIC | 2 |
| EROSION & SED. CONTROL NOTES & DETAILS | 3 |
| TYPICAL SECTIONS | 2 |
| GENERAL NOTES | 2 |
| EROSION & SEDIMENT CONTROL PLAN | 4 |

BENCHMARKS

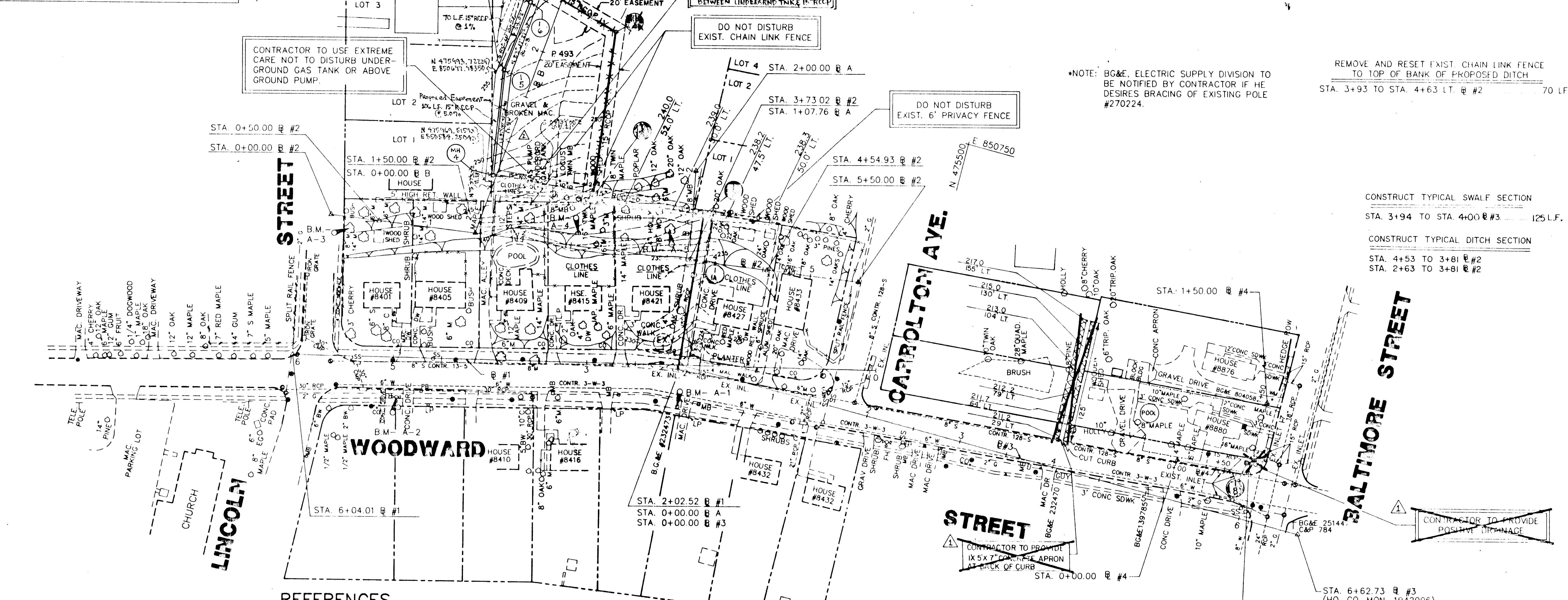
BENCHMARK: A-1 ELEV.: 226.00
RAILROAD SPIKE SET IN WEST SIDE OF B.G.&E POLE #232473, @ #1 STA. 2+00, 40' LT.

BENCHMARK: A-2 ELEV.: 236.81
"X" CUT IN M.V.B.B FIRE HYDRANT, @ #1 STA. 4+95, 40' LT.

BENCHMARK: A-3 ELEV.: 242.45
CUT NAIL SET IN SOUTHEAST SIDE OF 8" MAPLE, @ #2 STA. 0+20, 12' RT.

BENCHMARK: A-4 ELEV.: 239.40
CUT NAIL IN NORTHEAST SIDE OF TWIN 16" MAPLE, @ #2 STA. 2+60, 15' LT.

BENCHMARK: A-5 ELEV.: 239.31
RAILROAD SPIKE SET IN WEST SIDE OF 18" WHITE OAK, @ #2 STA. 3+50, 30' LT.

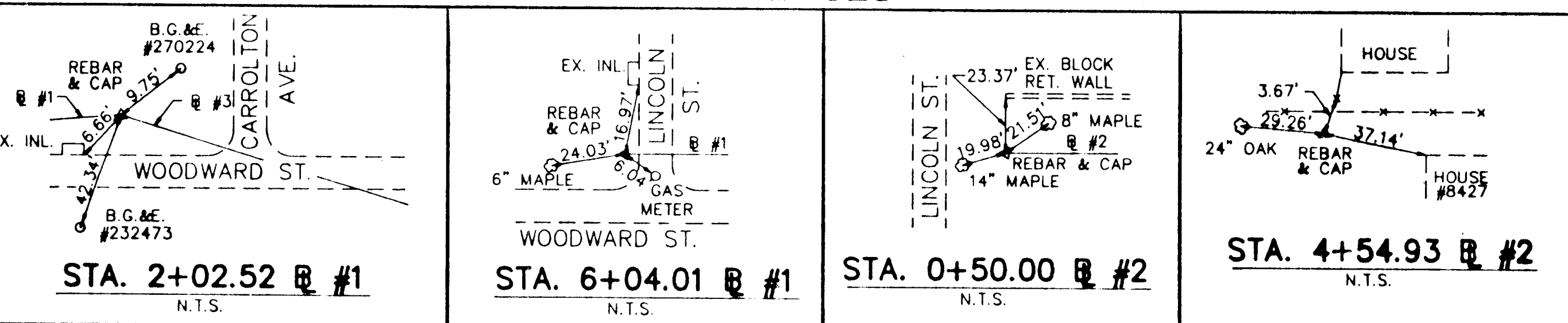


*NOTE: B.G.&E. ELECTRIC SUPPLY DIVISION TO BE NOTIFIED BY CONTRACTOR IF HE DESIRES BRACING OF EXISTING POLE #270224.

REMOVE AND RESET EXIST. CHAIN LINK FENCE TO TOP OF BANK OF PROPOSED DITCH STA. 3+93 TO STA. 4+63 LT @ #2 70 LF

CONSTRUCT TYPICAL SWALE SECTION STA. 3+194 TO STA. 4+00 @ #3 125 L.F.

CONSTRUCT TYPICAL DITCH SECTION STA. 4+53 TO 3+81 @ #2 STA. 2+63 TO 3+81 @ #2



PLAN
Scale: 1"=50'

DEPARTMENT OF PUBLIC WORKS
HOWARD COUNTY, MARYLAND

DIRECTOR OF PUBLIC WORKS: *[Signature]* DATE: 3/24/98
CHIEF, DIVISION OF TRANSPORTATION PROJECTS: *[Signature]* DATE: 3/23/98

JOHN E. HARMS, JR. & ASSOCIATES, INC.
CONSULTING ENGINEERS
90 GOV. RITCHIE HIGHWAY
PASADENA, MARYLAND
301-847-6000

STATE OF MARYLAND PROFESSIONAL ENGINEER

| | |
|------------|---------|
| DES: DM.D | 3/23/98 |
| DRN: J.R.R | 3/23/98 |
| CHK: SGZ | |
| DATE: 1/94 | |
| BY NO. | |
| REVISION | |
| DATE | |

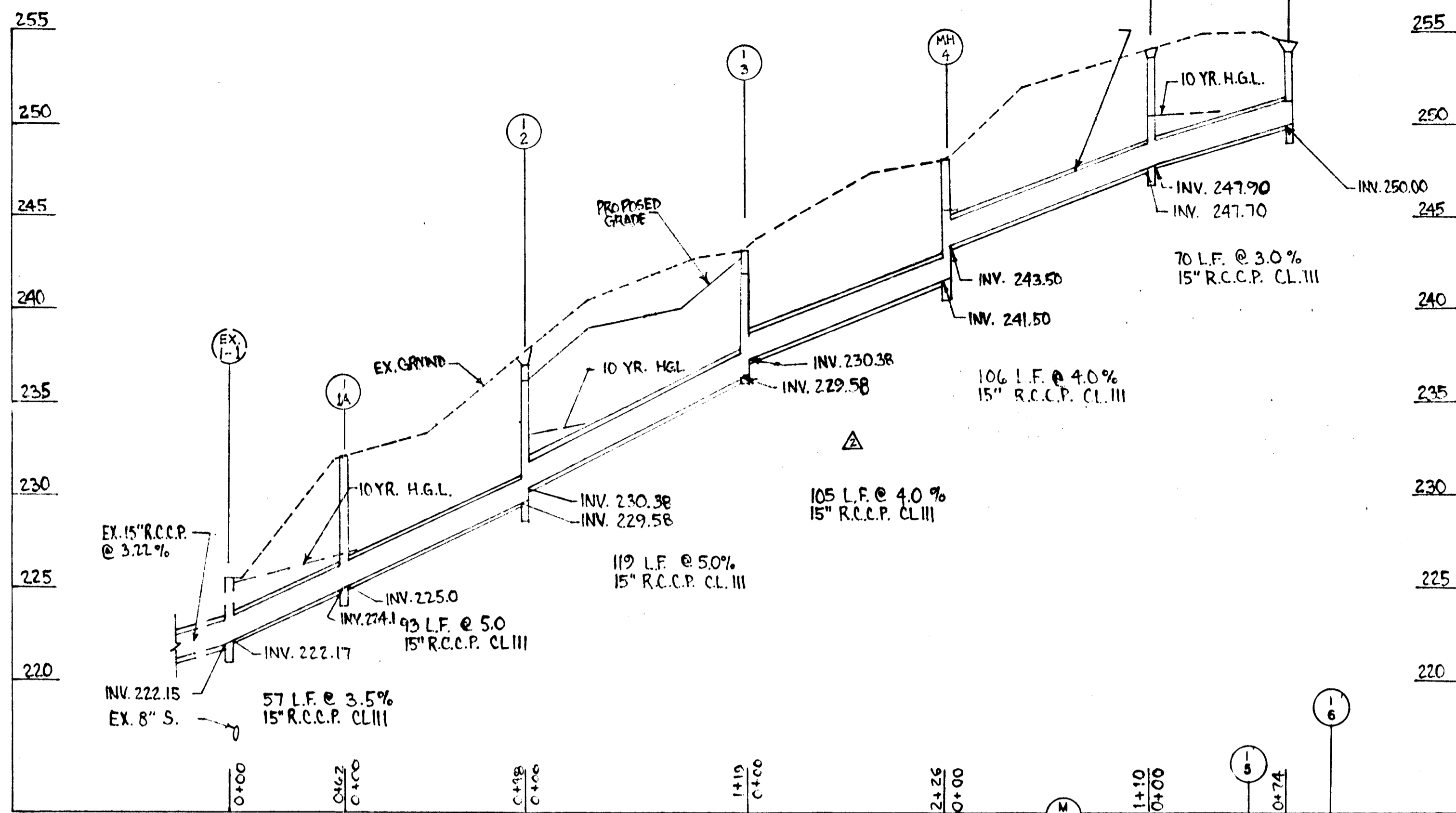
600' SCALE MAP NO. 47 BLOCK NO. 11

PLAN

WOODWARD STREET

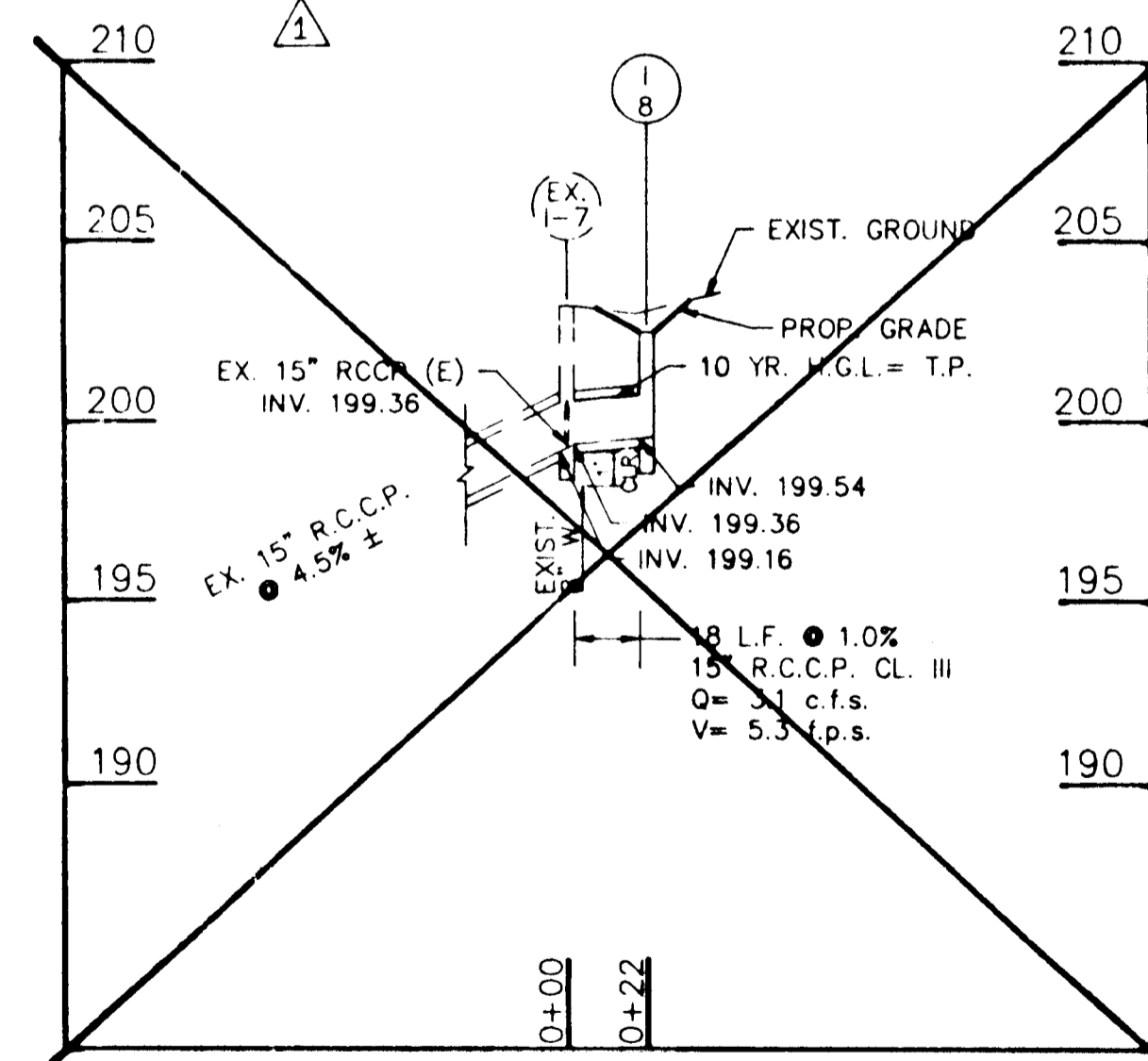
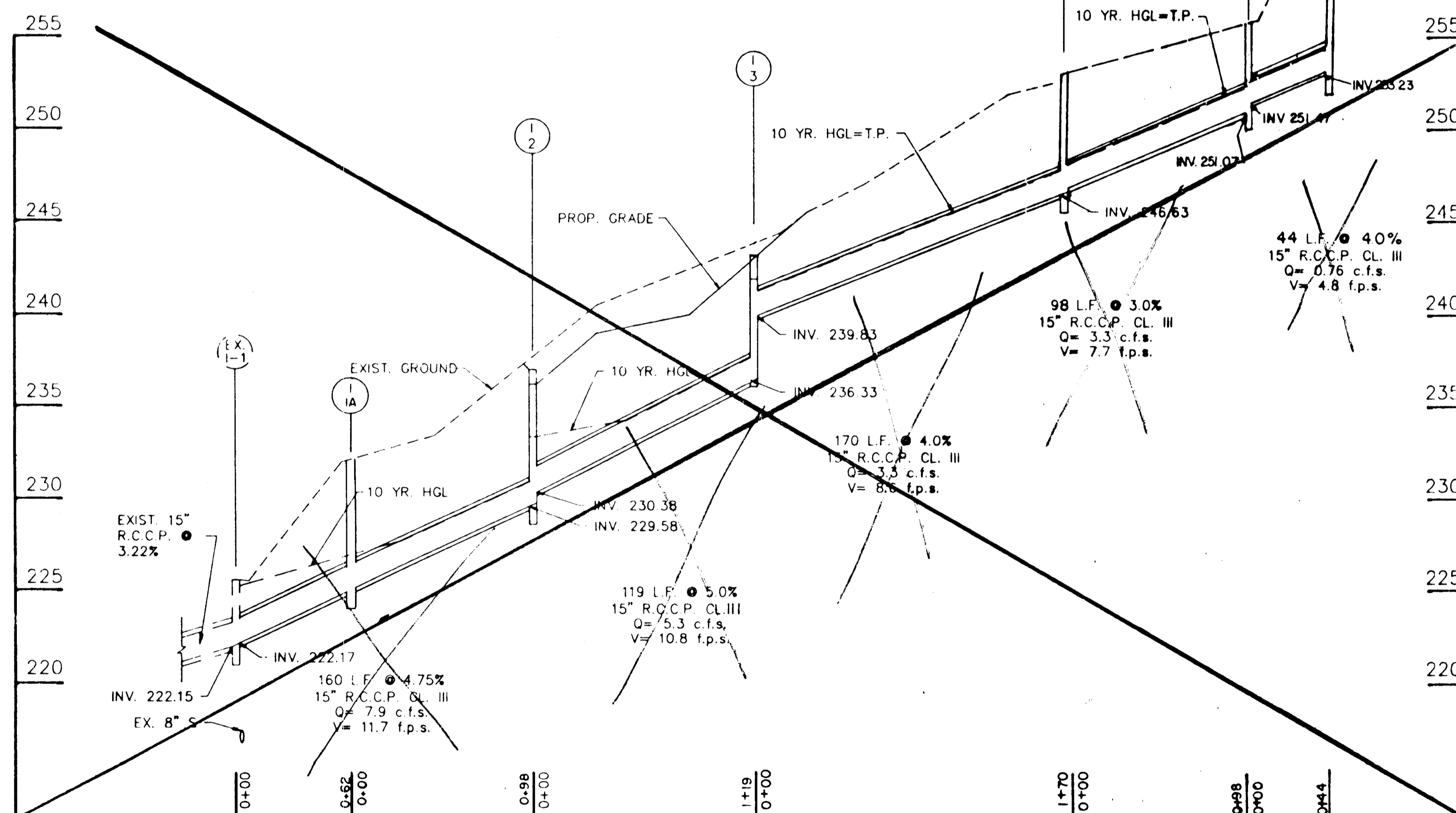
SCALE AS SHOWN

SHEET 5 OF 6



| STRUCTURE SCHEDULE | | | | | | | | |
|--------------------|----------------------|----------|---------|---------|----------------|----------|------------------|-------------------------|
| NO. | TYPE | BASELINE | STATION | OFFSET | TOP OF STRUCT. | INV. OUT | STANDARD | REMARKS |
| I-2 | OPEN END GRATE INLET | B #2 | 3+82 | 48' LT. | 236.60 | 229.58 | HO. CO. SD. 4.36 | DOUBLE OPENING |
| I-3 | 'D' INLET | B #2 | 2+70 | 53' LT. | 242.40 | 236.33 | HO. CO. SD. 4.11 | |
| MH-4 | BRICK MH | B B | 2+42 | 64' RT. | 254.00 | 246.63 | HO. CO. G 5.01 | HO. CO. G-5.12 OPTIONAL |
| I-5 | 'S' INLET | B B | 2+64 | 33' LT. | 255.40 | 251.07 | HO. CO. SD. 4.22 | 'S' GRATE |
| I-6 | YARD INLET | B B | 2+55 | 77' LT. | 259.00 | 253.23 | HO. CO. SD. 4.14 | |
| I-8 | 'S' INLET | B #4 | 0+85 | 5' LT. | 202.50 | 199.54 | HO. CO. SD. 4.22 | 'S' GRATE |
| I-1A | 'S' INLET | B #2 | 3+78 | 14' RT. | 232.30 | 225.00 | HO. CO. SD. 4.93 | 'S' GRATE |

NOTE: HO. CO. SD. 4.37 PRECAST INLET MAY BE USED AS OPTION TO HO. CO. S.D. 4.22

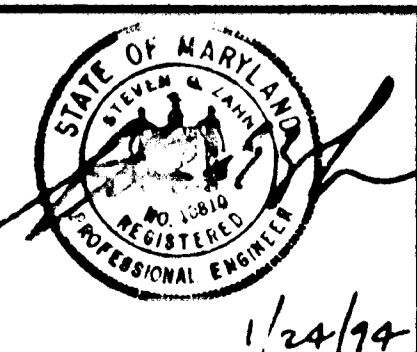


| PIPE SCHEDULE | | | | |
|---------------|------|------|--------------|--------|
| FROM | TO | SIZE | TYPE | LENGTH |
| I-1A | I-2 | 15" | RCCP CL. III | 98' |
| I-2 | I-3 | 15" | RCCP CL. III | 119' |
| I-3 | MH-4 | 15" | RCCP CL. III | 170' |
| MH-4 | I-5 | 15" | RCCP CL. III | 98' |
| I-5 | I-6 | 15" | RCCP CL. III | 44' |
| EX. I-7 | I-8 | 15" | RCCP CL. III | 18' |
| EX. I-1 | I-1A | 15" | RCCP CL. III | 62' |

STORM DRAIN PROFILES
SCALE: 1"=50' HORIZ.
1"=5' VERT.

DEPARTMENT OF PUBLIC WORKS
HOWARD COUNTY, MARYLAND
3/24/98
3/23/99

JOHN E. HARMS, JR. & ASSOCIATES, INC.
CONSULTING ENGINEERS
90 GOV. RITCHE HIGHWAY
PASADENA, MARYLAND
301-647-6000



DES: D.M.D.
DRN: J.R.R.
CHK: SGZ
DATE: 1/94

STORM DRAIN PROFILES SCHEDULES
600' SCALE MAP NO. 47 BLOCK NO. 11

WOODWARD STREET
SCALE AS SHOWN
SHEET 6 OF 6