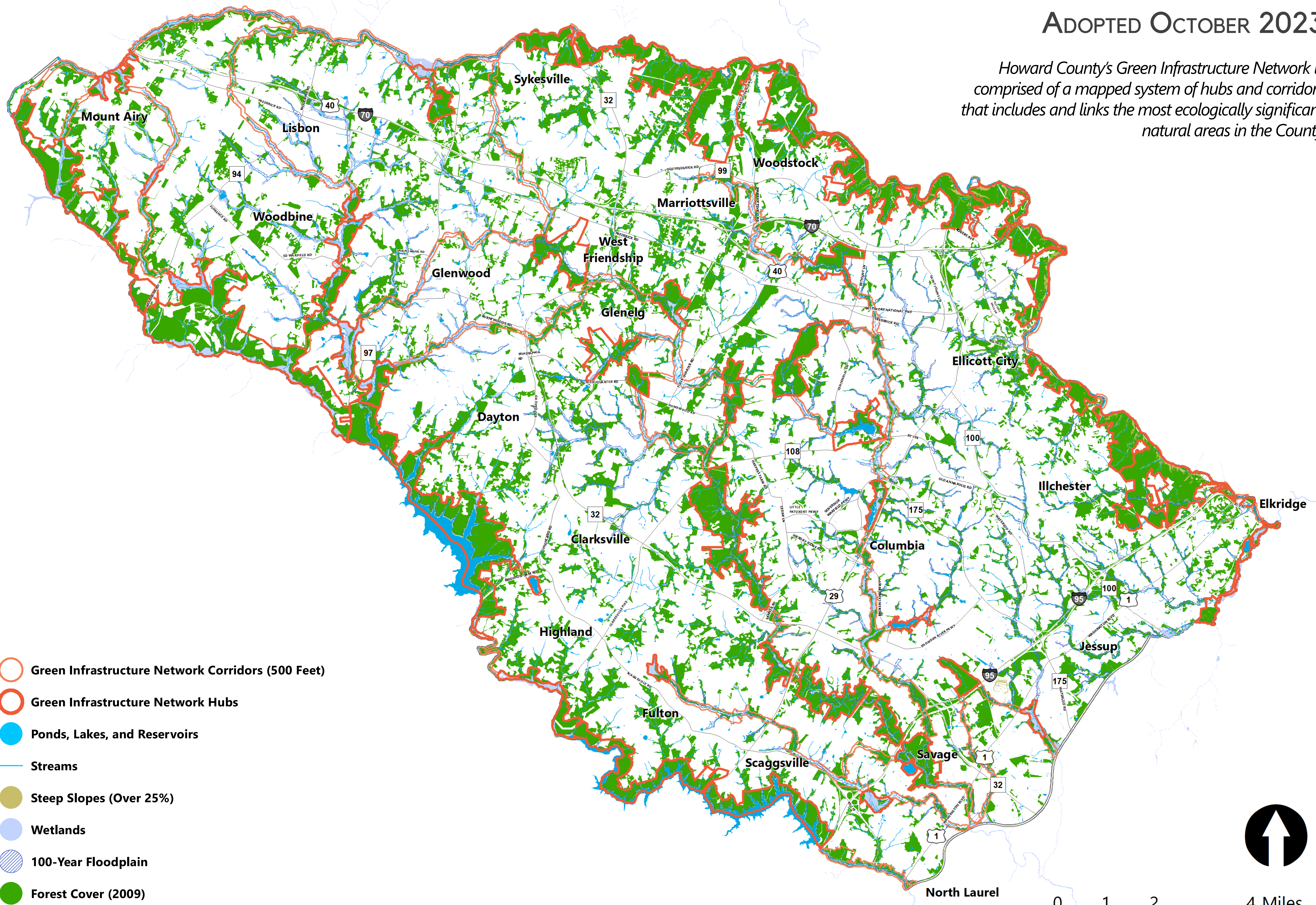










GREEN INFRASTRUCTURE NETWORK AND NATURAL RESOURCES

ADOPTED OCTOBER 2023

Howard County's Green Infrastructure Network is comprised of a mapped system of hubs and corridors that includes and links the most ecologically significant natural areas in the County



-  Green Infrastructure Network Corridors (500 Feet)
-  Green Infrastructure Network Hubs
-  Ponds, Lakes, and Reservoirs
-  Streams
-  Steep Slopes (Over 25%)
-  Wetlands
-  100-Year Floodplain
-  Forest Cover (2009)

