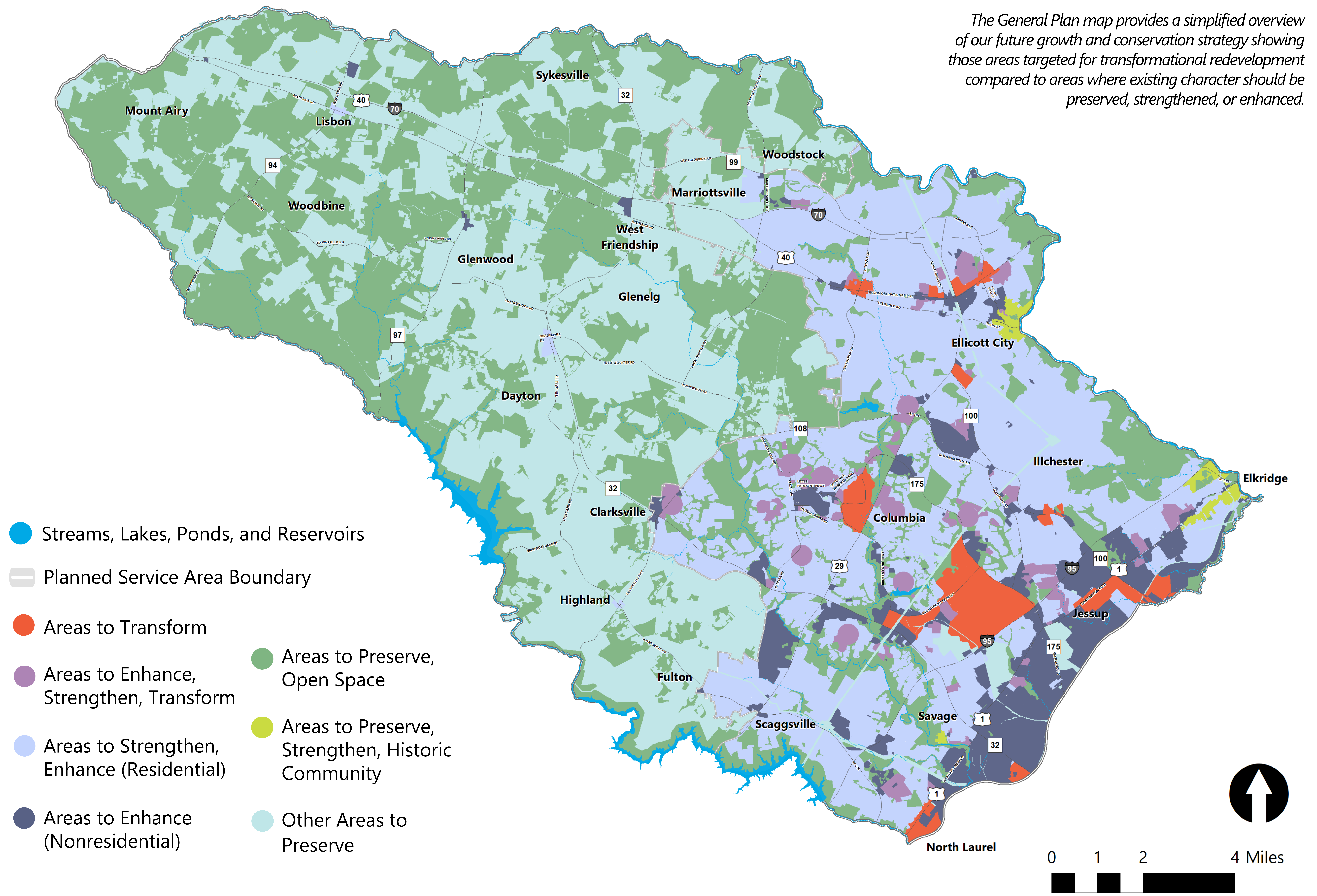


*The General Plan map provides a simplified overview of our future growth and conservation strategy showing those areas targeted for transformational redevelopment compared to areas where existing character should be preserved, strengthened, or enhanced.*



-  Streams, Lakes, Ponds, and Reservoirs
-  Planned Service Area Boundary
-  Areas to Transform
-  Areas to Enhance, Strengthen, Transform
-  Areas to Strengthen, Enhance (Residential)
-  Areas to Enhance (Nonresidential)
-  Areas to Preserve, Open Space
-  Areas to Preserve, Strengthen, Historic Community
-  Other Areas to Preserve