

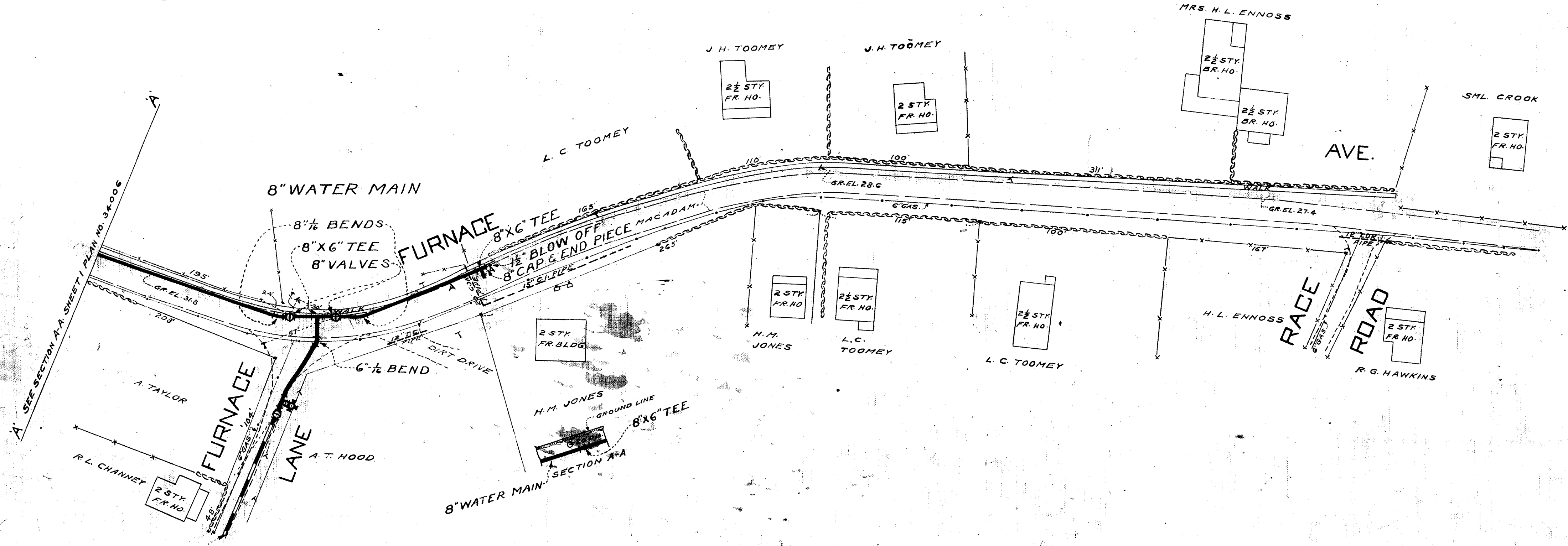
SEE SECTION 'A-A' SHEET 2 PLAN NO. 34007

600  
600  
1200  
30  
1230

C.W.O. 13274

DRAWN BY TRACED BY CHECKED DATE	PLANS PREPARED BY <i>Robert L. Norris W.F. Preston</i>	APPROVED BY COUNTY COMMISSIONERS <i>James H. Halliday</i> DATE <i>May 22 1934</i>	APPROVED FOR CITY OF BALTIMORE <i>Wm. H. Grafton</i> DATE <i>Aug 8 1934</i>	PROPOSED WATER IN FURNACE AVE. FROM MAIN ST. TO A POINT 60' SOUTH OF RACE RD.	DRAWING NO. <u>1</u> OF <u>2</u>	SCALE: 1" = 50'	J.O. 34006 FILE
	ELKRIDGE WATER DISTRICT HOWARD COUNTY MARYLAND						

W 108 B 30335



LIST OF FITTINGS		
QUANTITY	DESCRIPTION	SIZE
1	BLOW OFF	1 1/2"
0	BEND	8 1/2"
1	BEND	6 1/2"
2	BENDS	8 1/2"
1	GAP	8"
3	VALVES	8"
3	VALVES	6"
4	TEES	8 X 6"
0	TEE	8 X 8"
2	FIRE HYDRANT	6"
1	CAP	6"

100 EI OF 6" DIA. CENTRIFUGAL PIPE, CLASS 250.  
 1479 EI OF 8" DIA. CENTRIFUGAL PIPE, CLASS 250.  
 C.W.O. 13274

FOR EXTENSION OF MAIN IN FURNACE LANE  
 SEE PLAN NO. 34005

DRAWN BY TRACED BY CHECKED DATE	PLANS PREPARED BY <i>Robert C. Morris W. F. Preston</i>	APPROVED BY COUNTY COMMISSIONERS <i>David Parthen</i> DATE <i>Aug 13 1934</i> <i>Hard B. Muel</i>	APPROVED FOR CITY OF BALTIMORE DATE <i>Aug 8 1934</i> <i>Wm. H. ...</i>	PROPOSED WATER IN FURNACE AVE. FROM MAIN ST. TO A POINT 60 FT SOUTH OF RACE RD. HOWARD COUNTY MARYLAND	DRAWING NO. <i>2</i> OF <i>2</i>	SCALE: <i>1"=50'</i>	J.O. <i>34007</i> FILE
	ELKRIDGE WATER DISTRICT HOWARD COUNTY MARYLAND						

W 108 B 30335 A