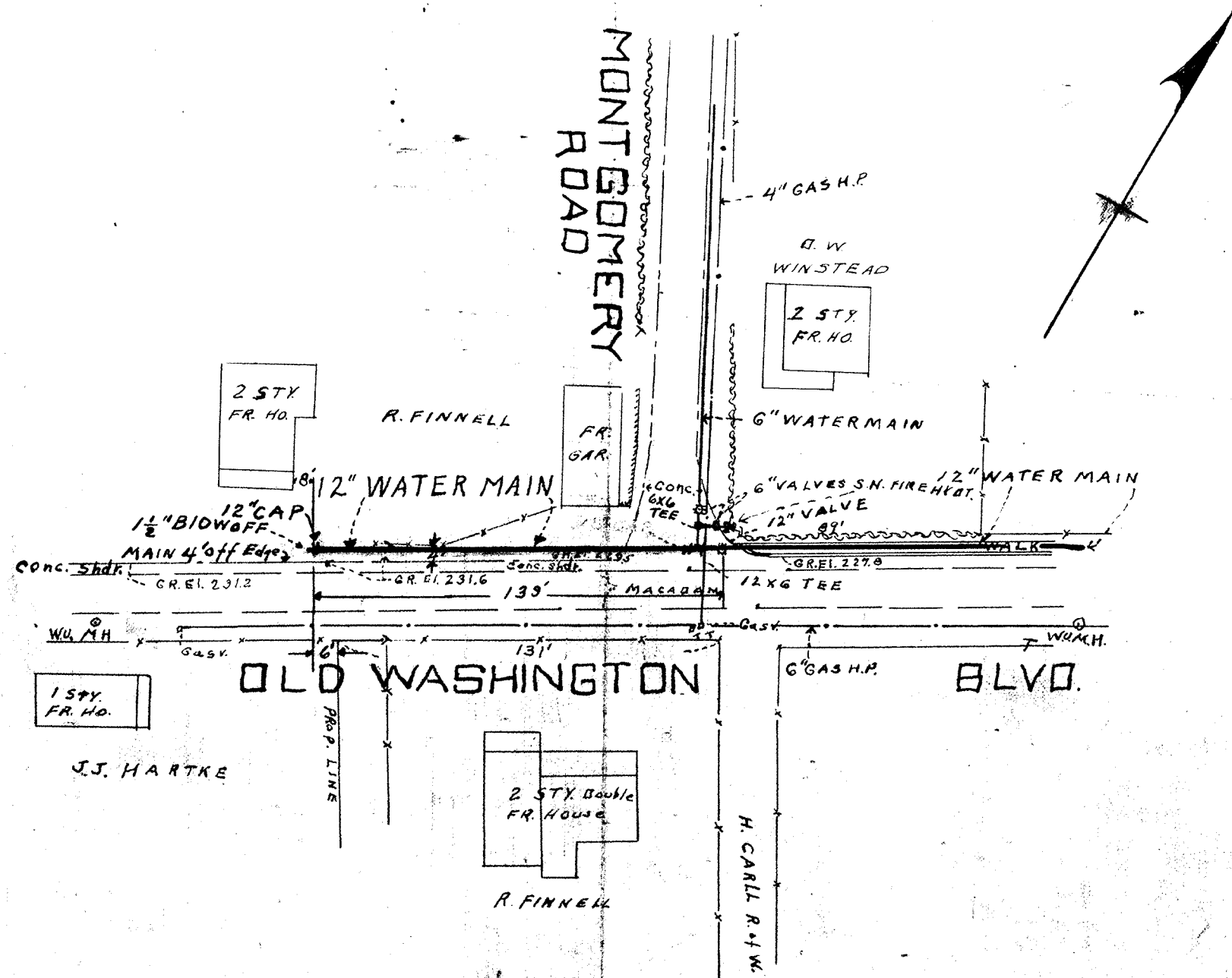


LIST OF FITTINGS		
QUANTITY	DESCRIPTION	SIZE
1	CAP	12"
1	BLOWOFF	1 1/2"

ALL LEAD JOINTS
END PIECE, 3 FT. LONG
MAIN INSTALLED, DEC. 19, 1935.



129' OF 12" DIA. CENTRIFUGAL PIPE, CLASS 150.

C.W.O. 13851

DRAWN MEB
TRACED R.C.M.
CHECKED W.C.P.
DATE

PLANS PREPARED BY
ROBERT C. NORRIS

ELKRIDGE WATER DISTRICT
HOWARD COUNTY MARYLAND.

APPROVED BY COUNTY COMMISSIONERS

H. Grafton Perry DATE *Oct. 22. 35*
Paul H. Jones
Harold D. ...

APPROVED FOR CITY OF BALTIMORE

Paul ... DATE *Oct 28 1935*
WATER ENGINEER

PROPOSED WATER IN OLD WASHINGTON BLVD. WEST
FROM MONTGOMERY ROAD.

ELKRIDGE

MARYLAND

DRAWING	SCALE	JO
NO. 1	1"=50'	35000
OF 1		FILE

W 105° 30343