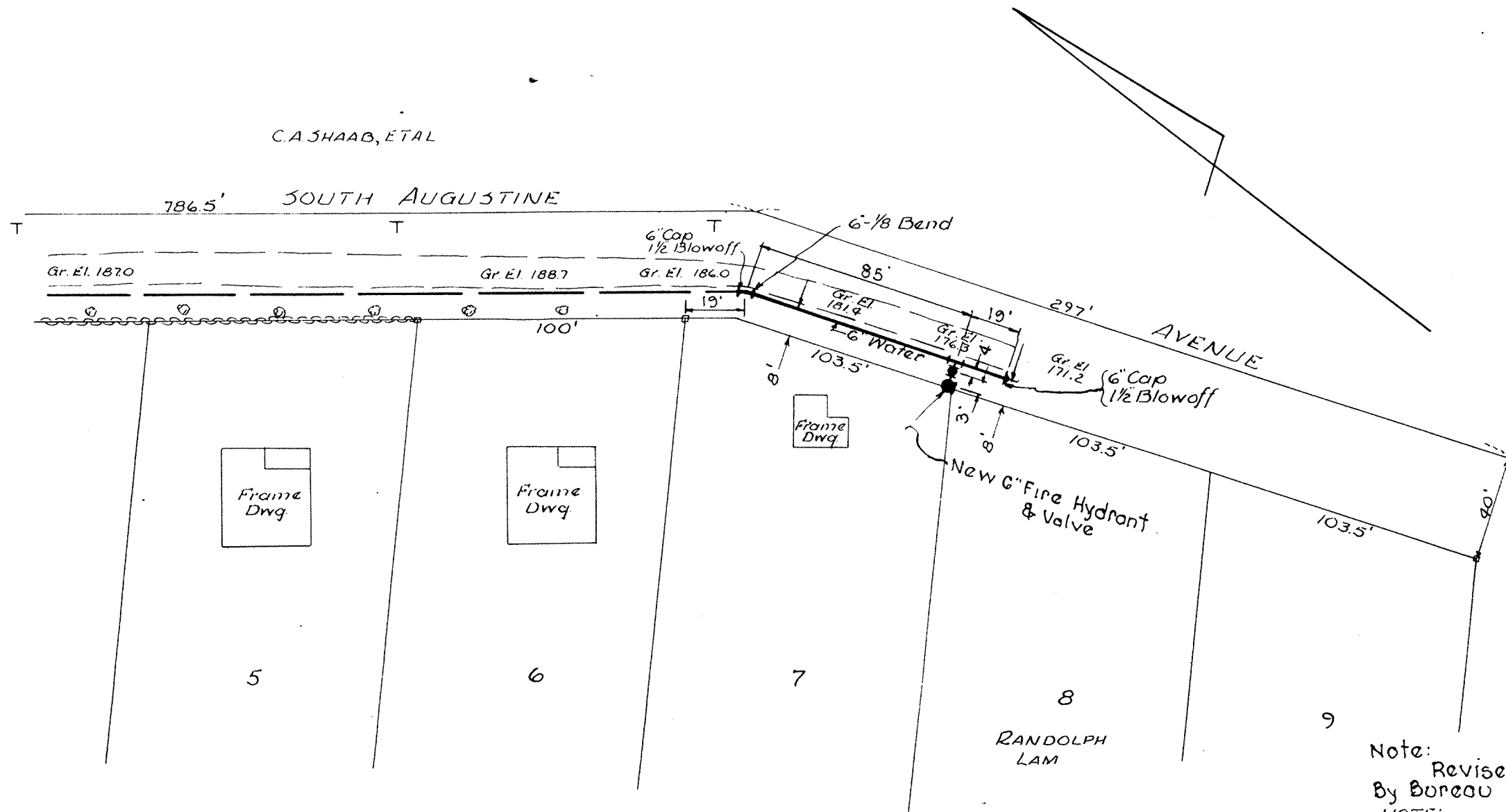


C.A. SHAAB, ETAL



C.W.O 20545  
120 FT. 6" CLASS 150 PIPE

Note: Revised May 16, 1951  
By Bureau of Water Supply.  
NOTE:  
Traced April 26, 1951 from print  
bearing original signatures.

NOTES:  
Water main to have a minimum of 4.0 ft. cover.  
All joints of lead.  
All fittings to be blocked with a concrete buttress.  
Avenue deeded to Howard County Commissioners, Feb 24, 1939

LIST OF FITTINGS		
No.	DESCRIPTION	SIZE
1	1/8 Bend	6"
1	Cap	6"
1	Blowoff	1/2"

APPROVED FOR HOWARD COUNTY  
Signed ELMER CAVEY  
CHAIRMAN  
Signed ROGER V. LAYNOR Signed MAURICE V. HASLUP

HOWARD COUNTY METROPOLITAN COMMISSION  
ELK RIDGE, HOWARD COUNTY MARYLAND

APPROVED FOR BALTO. CITY  
11-17-47  
Signed LEON SMALL Signed NATHAN L. SMITH  
WATER ENGINEER CHIEF ENGINEER

PLAN PREPARED BY  
July 1947  
Signed PT. KNAPP Signed RC. NORRIS

PROPOSED WATER MAIN EXTENSION  
IN SOUTH AUGUSTINE AVE.

SCALE DRAWING  
1" = 50' No.  
47003

W101°34919