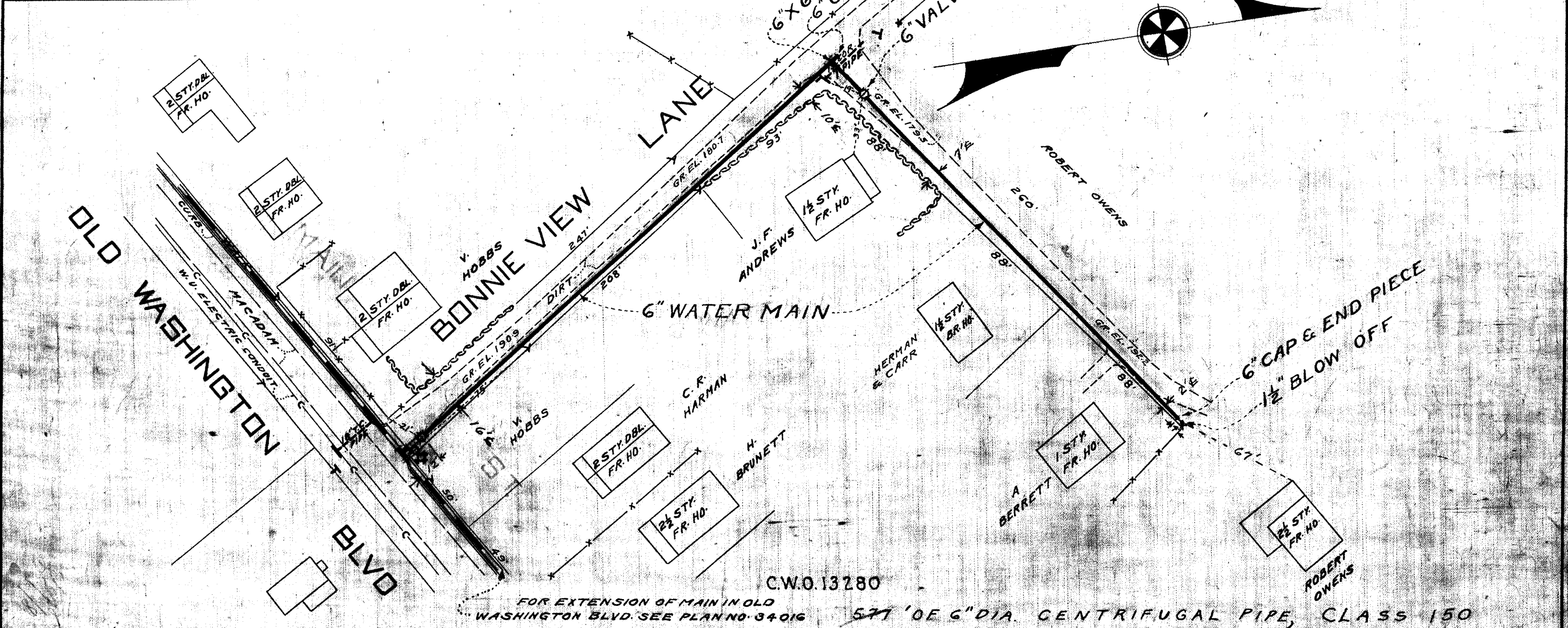


LIST OF FITTINGS		
QUANTITY	DESCRIPTION	SIZE
1	TEE	6" X 6"
2	CAPS	6"
1	VALVE	6"
1	BLOWOFF	1 1/2"



C.W.O. 13280  
 FOR EXTENSION OF MAIN IN OLD WASHINGTON BLVD. SEE PLAN NO. 34016  
 577' OF 6" DIA. CENTRIFUGAL PIPE, CLASS 150

DRAWN *R. Hughes*  
 TRACED *R. Hughes*  
 CHECKED  
 DATE

PLANS PREPARED BY  
*Robert C. Morris* *W. F. Preston*

ELKRIDGE WATER DISTRICT  
 HOWARD COUNTY MARYLAND

APPROVED BY COUNTY COMMISSIONERS  
*W. G. ...*  
 DATE *...*  
*H. Grafton Perry*  
*Hart B. ...*

APPROVED FOR CITY OF BALTIMORE  
*...*  
 DATE  
*...*  
 WATER ENGINEER

PROPOSED WATER IN BONNIE VIEW LANE  
 FROM OLD WASHINGTON BLVD. NORTHERLY  
 MARYLAND

DRAWING NO. 1 OF 1  
 SCALE: 1"=50'  
 J.O. 34020  
 FILE