

GENERAL NOTES

PART I

- APPROXIMATE LOCATIONS OF EXISTING MAINS ARE SHOWN. THE CONTRACTOR SHALL TAKE ALL NECESSARY PRECAUTIONS TO PROTECT EXISTING MAINS AND SERVICES AND MAINTAIN UNINTERRUPTED SERVICE. ANY DAMAGE INCURRED SHALL BE REPAIRED IMMEDIATELY TO THE SATISFACTION OF THE ENGINEER AT THE CONTRACTOR'S EXPENSE.
- AERIAL PHOTOS AND MAPS PROVIDED BY THE CLIENT, DATED MARCH 11, 1991; AND BY FIELD RUN SURVEYS BY ROBERT H. VOGEL ENGINEERING, INC. AND WERE PERFORMED ON 07/02/09, 04/06/12, 08/17/12, AND 12/30/14.
- HORIZONTAL AND VERTICAL SURVEY CONTROLS: THE COORDINATES SHOWN ON THE DRAWINGS ARE BASED ON MARYLAND STATE REFERENCE SYSTEM NAD '83/'91 AS PROJECTED BY HOWARD COUNTY GEODETIC CONTROL STATIONS 508A AND 508S. ALL VERTICAL CONTROLS ARE BASED ON NAVD '88. VERTICAL CONTROLS PROVIDED ON DRAWINGS ARE:
 GEODETIC SURVEY CONTROL 508A (N 527561.68/E 1359772.60)
 BRASS DISC SET ON TOP OF A CONCRETE MONUMENT.
 GEODETIC SURVEY CONTROL 508S (N 524999.37/E 1357925.75)
 BRASS DISC SET ON TOP OF A CONCRETE MONUMENT.
- ALL PIPE ELEVATIONS SHOWN ARE INVERT ELEVATIONS UNLESS OTHERWISE NOTED ON THE PLANS. CLEAR ALL UTILITIES BY A MINIMUM OF 12 INCHES. CLEAR ALL POLES BY 5'-0" MINIMUM OR TUNNEL AS REQUIRED UNLESS OTHERWISE NOTED. THE OWNER HAS CONTACTED THE UTILITY COMPANIES AND HAS MADE ARRANGEMENTS FOR BRACING OF POLES AS SHOWN ON THE DRAWINGS. IN THE EVENT THE CONTRACTOR'S WORK REQUIRES THE BRACING OF ADDITIONAL POLES, ANY COST INCURRED BY THE OWNER FOR BRACING OF ADDITIONAL POLES OR DAMAGES SHALL BE DEDUCTED FROM MONIES OWED THE CONTRACTOR. THE CONTRACTOR SHALL COORDINATE WITH THE UTILITY COMPANIES TO SCHEDULE THE BRACING OF THE POLES.
- FOR DETAILS NOT SHOWN ON THE DRAWING, AND FOR MATERIALS AND CONSTRUCTION METHODS, USE HOWARD COUNTY DESIGN MANUAL, VOLUME IV, STANDARD SPECIFICATIONS AND DETAILS FOR CONSTRUCTION (LATEST EDITION). THE CONTRACTOR SHALL HAVE A COPY OF VOLUME IV ON THE JOB.
- WHERE TEST PITS HAVE BEEN MADE ON EXISTING UTILITIES, THEY ARE NOTED BY THE SYMBOL AT THE LOCATIONS OF THE TEST PITS. A NOTE OR NOTES CONTAINING THE RESULTS OF THE TEST PIT OR PITS IS INCLUDED ON THE DRAWINGS. EXISTING UTILITIES IN THE VICINITY OF THE PROPOSED WORK WHICH TEST PITS HAVE NOT BEEN DUG SHALL BE LOCATED BY THE CONTRACTOR TWO WEEKS IN ADVANCE OF CONSTRUCTION OPERATIONS AT HIS OWN EXPENSE.
- THE CONTRACTOR SHALL NOTIFY THE FOLLOWING UTILITY COMPANIES OR AGENCIES AT LEAST FIVE WORKING DAYS BEFORE STARTING WORK SHOWN THESE PLANS:
 AT&T 1-800-252-1133
 BGE (CONSTRUCTION SERVICES) 410-637-8713
 BGE (EMERGENCY) 410-685-0123
 BUREAU OF UTILITIES 410-513-4800
 COLONIAL PIPELINE CO 410-795-1390
 MISS UTILITY 1-800-257-7777
 STATE HIGHWAY ADMINISTRATION 410-523-5537
 VERIZON 1-800-743-0033
- TREES AND SHRUBS ARE TO BE PROTECTED FROM DAMAGE TO THE MAXIMUM EXTENT. TREES AND SHRUBS LOCATED WITHIN THE CONSTRUCTION STRIP ARE NOT TO BE REMOVED OR DAMAGED BY THE CONTRACTOR.
- THE CONTRACTOR SHALL REMOVE TREES, STUMPS AND ROOTS ALONG THE LINE OF EXCAVATION. PAYMENT FOR SUCH REMOVAL SHALL BE INCLUDED IN THE UNIT PRICE BID FOR CONSTRUCTION OF THE MAIN.
- THE CONTRACTOR SHALL NOTIFY THE BUREAU OF HIGHWAYS, HOWARD COUNTY, AT (410) 313-7450 AT LEAST FIVE WORKING DAYS BEFORE CUTTING OR BORING/WORKING OF ANY COUNTY ROAD FOR LAYING WATER/SEWER MAINS OR HOUSE CONNECTIONS. THE APPROVAL OF THESE DRAWINGS WILL CONSTITUTE COMPLIANCE WITH DPW REQUIREMENTS PER SECTION 18.114(c) OF THE HOWARD COUNTY CODE.

PART II - WATER

- ALL WATER MAINS SHALL BE C900 PVC-DR-18 UNLESS OTHERWISE NOTED.
- TOPS OF ALL WATER MAINS SHALL HAVE A MINIMUM OF 3'-6" OF COVER UNLESS OTHERWISE NOTED.
- VALVES ADJACENT TO TEES SHALL BE STRAPPED TO TEES.
- ALL FITTINGS SHALL BE BUITRESS OR ANGED CONCRETE IN ACCORDANCE WITH STANDARD DETAILS UNLESS OTHERWISE PROVIDED FOR ON THE DRAWINGS.
- FIRE HYDRANTS SHALL BE SET TO THE BURY LINE ELEVATIONS SHOWN ON THE DRAWINGS. ALL FIRE HYDRANTS SHALL BE INSTALLED IN ACCORDANCE WITH STANDARD DETAILS. THE IRON AROUND THE FIRE HYDRANT SHALL BE COMPACTED IN ACCORDANCE WITH SECTION 1000 AND SECTION 1005 OF THE STANDARD SPECIFICATIONS.
- THE CONTRACTOR SHALL NOT OPERATE ANY WATER MAIN VALVES ON THE EXISTING WATER SYSTEM.
- TRACER WIRE AND CONTINUITY TEST STATIONS SHALL BE INSTALLED ON ALL DIP AND PVC WATER MAINS IN ACCORDANCE WITH THE HOWARD COUNTY DESIGN MANUAL.
- FOR PVC WATER MAINS, RECORDS FOR CONTROL AND QUALIFICATION TEST REQUIREMENTS NOTED IN SECTION 5.1 OF THE AWWA STANDARD C900 FOR PVC PRESSURE PIPE SHALL BE SUBMITTED WITH THE PIPE MATERIAL CERTIFICATIONS OR SHOP DRAWINGS PRIOR TO APPROVAL OF THE MATERIAL FOR USE. THE RECORDS SHALL BE FOR THE PIPE TO BE INSTALLED UNDER THIS CONTRACT. ALL PVC PIPE SHALL CONTAIN MARKINGS TO ALLOW CROSS REFERENCING OF THE PIPE SUPPLIED TO THE TEST RECORDS RECEIVED.
- UNLESS OTHERWISE NOTED ON THE PLANS OR IN THE SPECIFICATIONS, SACRIFICIAL ANODES SHALL BE INSTALLED ON ALL VALVES AND METALLIC FITTINGS USED WITH PVC WATER MAINS IN ACCORDANCE WITH VOLUME IV, STANDARD SPECIFICATIONS AND DETAILS FOR CONSTRUCTION. SEVENTEEN (17) POUND MAGNESIUM ANODES SHALL BE INSTALLED ON ALL VALVES AND DUCTILE IRON FITTINGS INCLUDING RESTRAINTS AND HARNESSSES. TWELVE (12) POUND ZINC ANODES SHALL BE INSTALLED ON ALL STAINLESS STEEL FITTINGS AND SADDLES USED WITH PVC MAINS. ALL TEES USED WITH PVC MAINS SHALL BE DUCTILE IRON.
- PROPER ASSEMBLY OF GASKETED PVC PIPE JOINTS: THE MANUFACTURER'S INSERTION LINE OF GASKETED PVC PIPE JOINTS INDICATES THE MAXIMUM DEPTH OF INSERTION OF THE SPIGOT INTO THE BELL. AFTER ASSEMBLY OF THE JOINT, THE INSERTION LINE SHALL REMAIN VISIBLE. DUAL INSERTION LINES ON GASKETED PVC PIPE INDICATE THE MAXIMUM AND MINIMUM DEPTH OF INSERTION OF THE SPIGOT INTO THE BELL. THE CONTRACTOR SHALL NOT OVER INSERT OR OVER HOME THE SPIGOT INTO THE BELL OF PVC PIPE.
- ALL CHANGES IN HORIZONTAL OR VERTICAL DIRECTION OF PVC WATER PIPE SHALL BE MADE WITH STANDARD BENDS, 5-DEGREE SWEEPS OR HIGH DEFLECTION (HD) COUPLINGS. NO BENDING OF THE PIPE OR DEFLECTING OF PVC PIPE JOINTS IS PERMITTED, WHERE HIGH DEFLECTION COUPLINGS OR 5-DEGREE SWEEPS ARE PERMITTED. THE CONTRACTOR SHALL PROVIDE ONE FULL PIPE LENGTH (20-FOOT LONG) ON EITHER SIDE OF THE HIGH DEFLECTION COUPLING OR 5-DEGREE SWEEP. THE CONTRACTOR SHALL USE A VIBRATORY PLATE COMPACTOR OR OTHER APPROVED MEANS TO THOROUGHLY COMPACT THE #57 STONE ON BOTH SIDES OF THE HIGH DEFLECTION COUPLING OR 5-DEGREE SWEEP. TAKING CARE NOT TO USE COMPACTOR EQUIPMENT DIRECTLY OVER THE FITTING. PVC HIGH DEFLECTION COUPLINGS SHALL BE LIMITED TO A TOTAL DEFLECTION OF 3-DEGREES 1-1/2- DEGREE ON EITHER END OF THE COUPLING). SHALL BE RATED FOR A MINIMUM 200 PSI MEETING THE REQUIREMENTS OF AWWA C900. SHALL HAVE A MINIMUM LAY LENGTH OF 9-INCHES AND SHALL HAVE CLEAR STOPS. PVC HIGH DEFLECTION COUPLINGS SHALL BE CERTAINTED PVC HIGH DEFLECTION (HD) STOP COUPLINGS OR EQUAL. FIVE DEGREE SWEEPS SHALL BE BELL BY SPIGOT, RATED FOR A MINIMUM 225 PSI, DR18 MEETING THE REQUIREMENTS OF AWWA C900 AND SHALL BE MULTI FITTINGS (P2) BLUE BRUTE DR18 OR EQUAL.
- WHEN PVC HIGH DEFLECTION COUPLINGS OR PVC 5-DEGREE SWEEPS ARE USED TO FACILITATE CHANGES IN HORIZONTAL OR VERTICAL ALIGNMENTS OF AWWA C-900 PVC PIPELINES, THE CONTRACTOR SHALL INSTALL DEVICES FOR THE PREVENTION OF OVER-INSERTION OF THE PVC PIPE SPIGOTS OR PLAIN ENDS INTO THE PUSH ON BELL JOINT ON BOTH SIDES OF THE HIGH DEFLECTION COUPLINGS AND 5 DEGREE SWEEPS. BELL STOPS SHALL BE PLACED AT THE PROPER INSERTION LINE FOR THE FITTING. THE BELL STOP SHALL BE MANUFACTURED OF DUCTILE IRON AND INCORPORATE AN EXPANSION RETENTION SPRING TO ALLOW FOR PIPE EXPANSION AND CONTRACTION. THE BELL STOPS SHALL BE SERIES 5000 MEGA-STOP, AS MANUFACTURED BY EBAA IRON INC. OR APPROVED EQUAL.
- SPRINKLER SYSTEM FOR SINGLE RESIDENTIAL DWELLING UNITS SHALL HAVE WATER HOUSE CONNECTIONS AND WATER METERS THAT ARE SIZED IN ACCORDANCE WITH THE DESIGN OF THE SPRINKLER SYSTEMS. SPRINKLER SYSTEMS FOR SINGLE RESIDENTIAL DWELLINGS SHALL HAVE A MINIMUM OF 1.5" SERVICE CONNECTION WITH A 1" OUTSIDE METER SETTING.
- FOR STACKED RESIDENTIAL DWELLING UNITS, EACH BUILDING SHALL HAVE A 4" WATER HOUSE CONNECTION WITH AN INSIDE METER SETTING FOR FIRE PROTECTION AND A SINGLE DOMESTIC SERVICE. DOMESTIC SERVICE TO BE PROVIDED BY 1.5" SINGLE OR TWIN WATER HOUSE CONNECTIONS WITH 3/4" SINGLE OR TWIN OUTSIDE METER SETTINGS AND 1" CONNECTORS TO THE INDIVIDUAL UNITS.

PART III - SEWER

- ALL SEWER MAINS SHALL BE D.I.P. OR P.V.C UNLESS OTHERWISE NOTED.
- ALL MANHOLES SHALL BE 4'-0" INSIDE DIAMETER UNLESS OTHERWISE NOTED.
- FORCE MAINS SHALL BE D.I.P. ONLY.
- MANHOLES SHOWN WITH 12" AND 16" WALLS ARE FOR BRICK MANHOLES ONLY. MANHOLES DESIGNATED W.T. IN PLAN AND PROFILE SHALL HAVE WATERTIGHT FRAME AND COVER. STANDARD DETAIL GS-82. WHERE WATERTIGHT MANHOLE FRAMES AND COVERS ARE USED, SET TOP OF FRAME 1'-6" ABOVE FINISHED GRADE UNLESS OTHERWISE NOTED ON THE DRAWINGS.
- HOUSE(S) WITH THE SYMBOL "C.N.S." INDICATES THAT THE CELLAR CANNOT BE SERVED.

SEDIMENT CONTROL MEASURES WILL BE IMPLEMENTED IN ACCORDANCE WITH SECTION 308 OF THE SPECIFICATIONS AND WITH SITE DEVELOPMENT PLAN SDP-21-016.

THIS DEVELOPMENT IS APPROVED FOR SOIL EROSION AND SEDIMENT CONTROL BY THE HOWARD COUNTY CONSERVATION DISTRICT.

Almond Butcher 06/10/24
 SOIL CONSERVATION DISTRICT DATE

DEPARTMENT OF PUBLIC WORKS
 HOWARD COUNTY, MARYLAND

DEPARTMENT OF PLANNING & ZONING
 HOWARD COUNTY, MARYLAND

5/31/2024 DATE

6.13.24 DATE

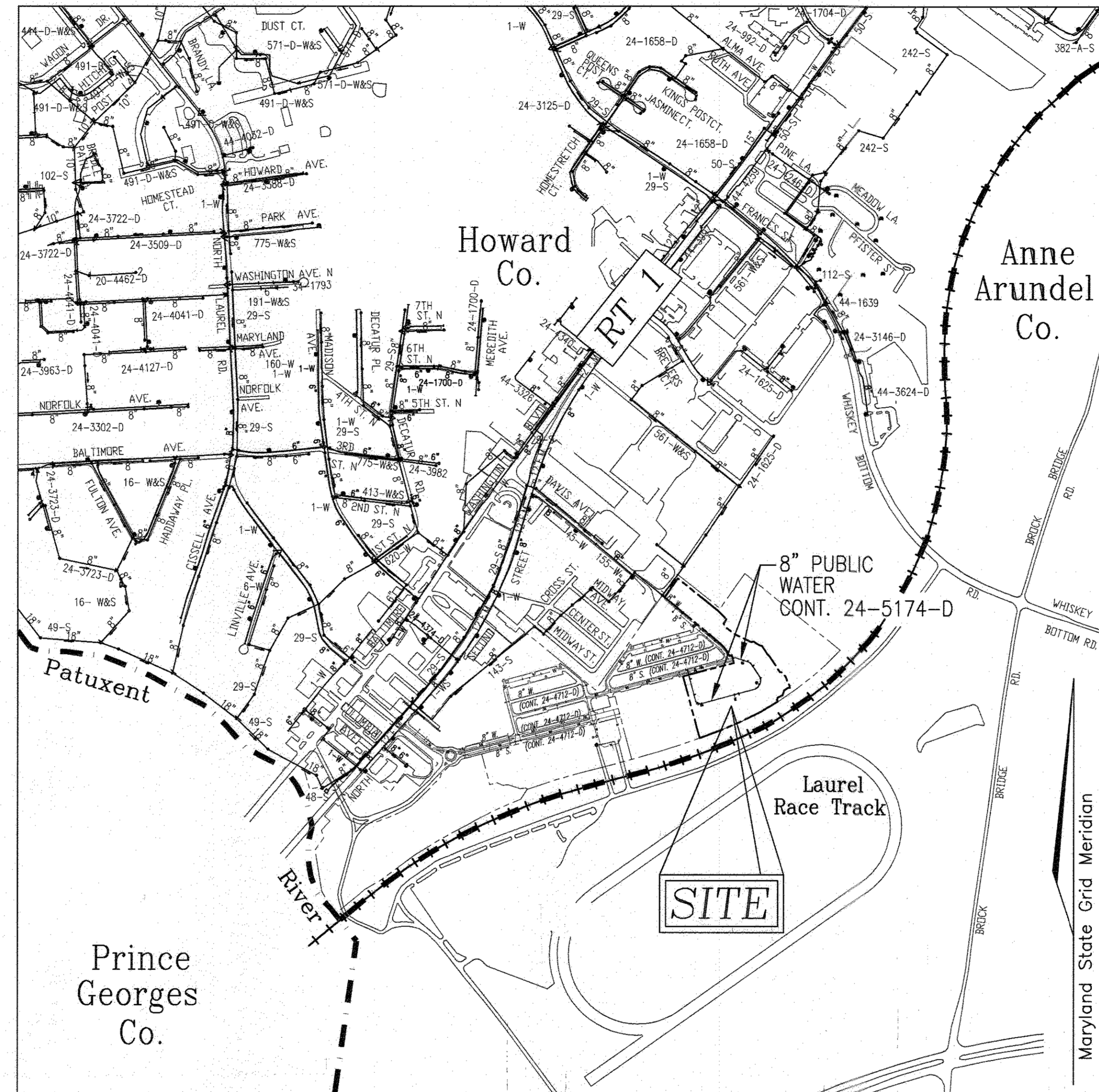
FINAL WATER CONSTRUCTION PLAN

PADDOCK POINTE-PHASE 3A

PARCEL 384; PARCELS C-5 & K-2

CONTRACT 24-5174-D

HOWARD COUNTY, MARYLAND



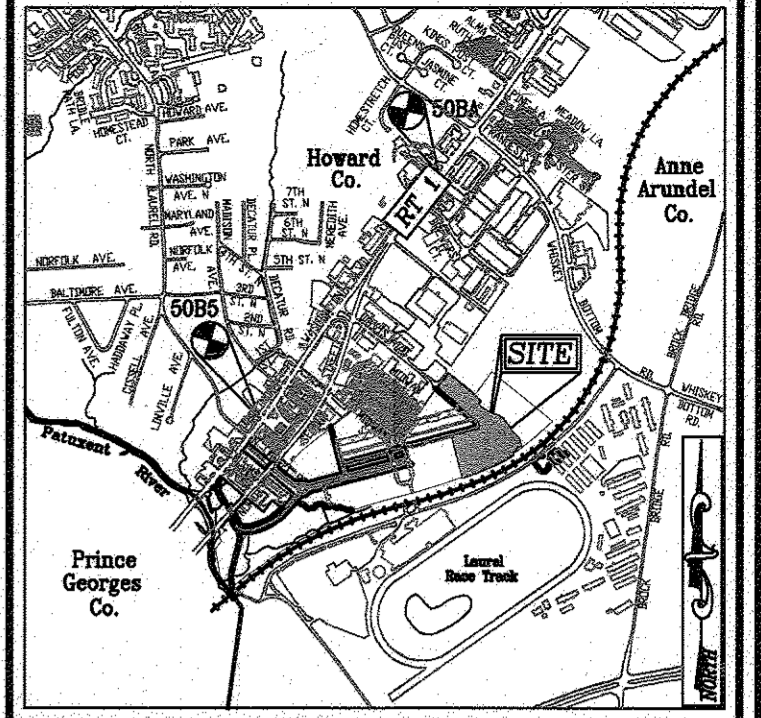
LOCATION MAP
 SCALE: 1"=600'

WATER ZONE: 400
 TEST GRADIENT: 677
 TEST PRESSURE: 222.71 PSI

TYPE OF BUILDING :	RESIDENTIAL
NO. OF UNITS:	58 STACKED TOWN
NO. OF SINGLE WATER HOUSE CONNECTIONS :	8
NO. OF TWIN WATER HOUSE CONNECTIONS :	0
NO. OF SINGLE SEWER HOUSE CONNECTIONS :	0
NO. OF TWIN SEWER HOUSE CONNECTIONS :	0
DRAINAGE AREA:	LITTLE PATUXENT RIVER
TREATMENT PLANT :	LITTLE PATUXENT WRP

BENCHMARKS

HOWARD COUNTY BENCHMARK - 508A
 N 527561.68 E 1359772.60 ELEV.: 249.44
 HOWARD COUNTY BENCHMARK - 508S
 N 524999.37 E 1357925.75 ELEV.: 178.20



VICINITY MAP
 SCALE: 1"=2000'
 ADC MAP/GRID NO: 5169 -G4

LEGEND

EXISTING TREELINE	
PROPOSED WATER MAIN	
FIRE HYDRANT	
PROPOSED VALVE	
PROPOSED TEE	
PROPOSED WATER HOUSE CONNECTION	
EXISTING WATER MAIN	
PROPOSED STORM DRAIN	
EXISTING STORM DRAIN	
EXISTING SEWER	
PRIVATE SEWER	
PRIVATE WATER HOUSE CONNECTION	
PRIVATE SEWER HOUSE CONNECTION	
PROPOSED SIGN	
PROPOSED LIGHT	

SHEET INDEX

DESCRIPTION	SHEET NO.
COVER SHEET & LOCATION MAP	1 OF 3
LAYOUT PLAN	2 OF 3
WATER AND SEWER PROFILES	3 OF 3

QUANTITIES

ITEMS	QUANTITIES ESTIMATED	AS-BUILT	
		QUANTITIES	MANUFACTURER/SUPPLIER
WATER			
8" WATER (PVC C-900) (DR-18)	976 LF		
6" WATER (PVC C-900) (DR-18)	90 LF		
6" WATER DIP (RV)	91 LF		
8"x6" TAPPING SLEEVE	2 EA		
8" X 8" TEE	1 EA		
8" X 6" TEE	10 EA		
6"x8" EXPANDER	1 EA		
8" VALVE	4 EA		
8" VALVE	13 EA		
FIRE HYDRANT & TEST STATION	1 EA		
8" CAP AND BUTTRISS	1 EA		
6" CAP AND BUTTRISS	8 EA		
8" - 1/8 BEND	8 EA		
8" - 1/32 BEND	1 EA		
SEWER			
STANDARD 4" PRECAST MANHOLE	2 EA		

COVER SHEET

FINAL WATER AND SEWER CONSTRUCTION PLAN
CONTRACT NO. 24-5174-D

600' SCALE MAP NO. 50 BLOCK NO. 10

PADDOCK POINTE-PHASE 3A
 (FORMERLY KNOWN AS LAUREL PARK STATION)
 76 STACKED TOWN PARCELS C-5 & K-2
 ZONED: TOD

TAX MAP 50, GRID 10
 6TH ELECTION DISTRICT

PARCEL 384
 HOWARD COUNTY, MARYLAND

SCALE AS SHOWN
 SHEET 1 OF 3

VOGEL ENGINEERING

TIMMONS GROUP
 3300 NORTH RIDGE ROAD, SUITE 110, ELLICOTT CITY, MD 21043
 P: 410.461.7666 F: 410.461.8961 www.timmons.com

STATE OF MARYLAND
 ROBERT H. VOGEL, PE No. 16193
 REGISTERED PROFESSIONAL ENGINEER

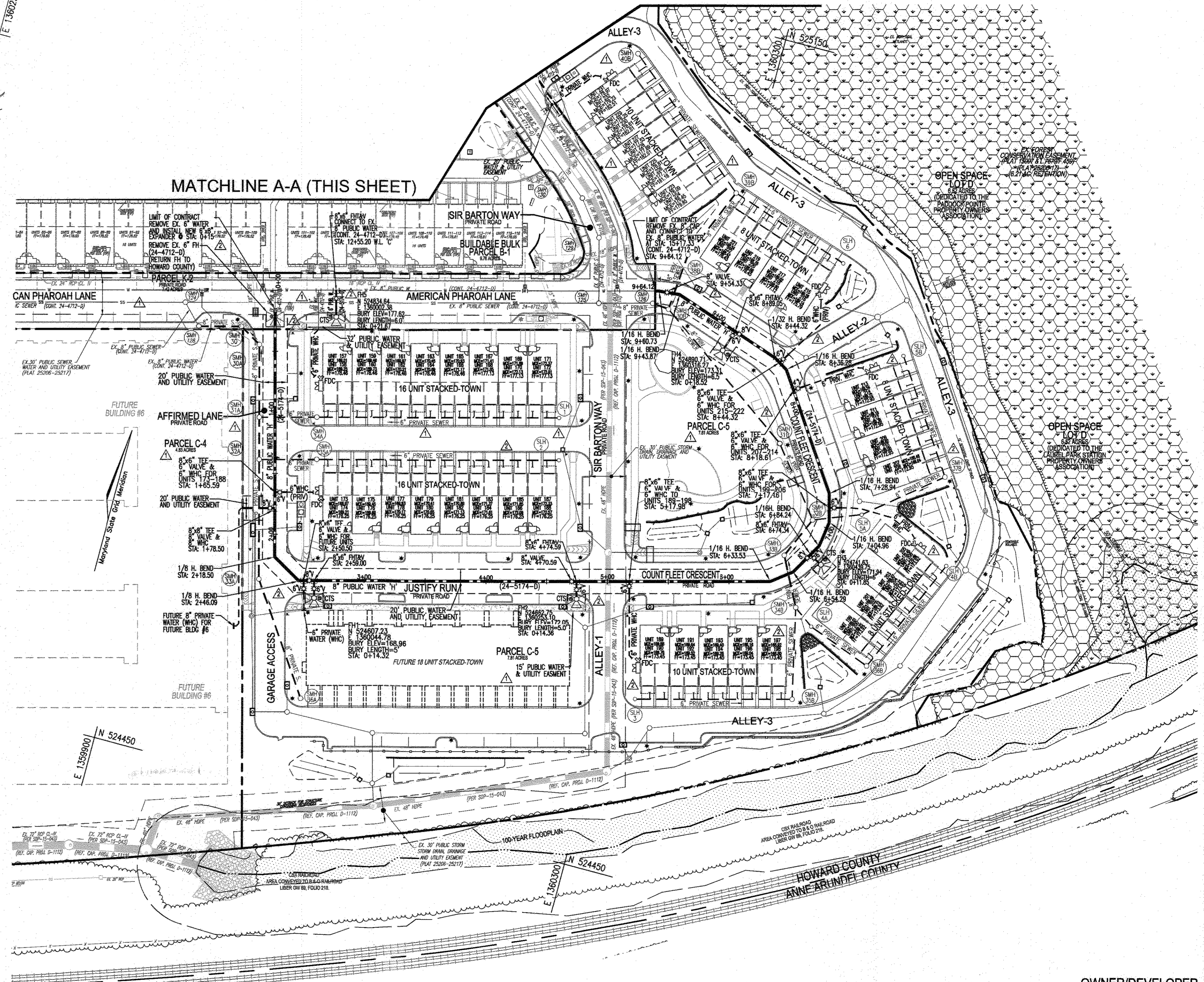
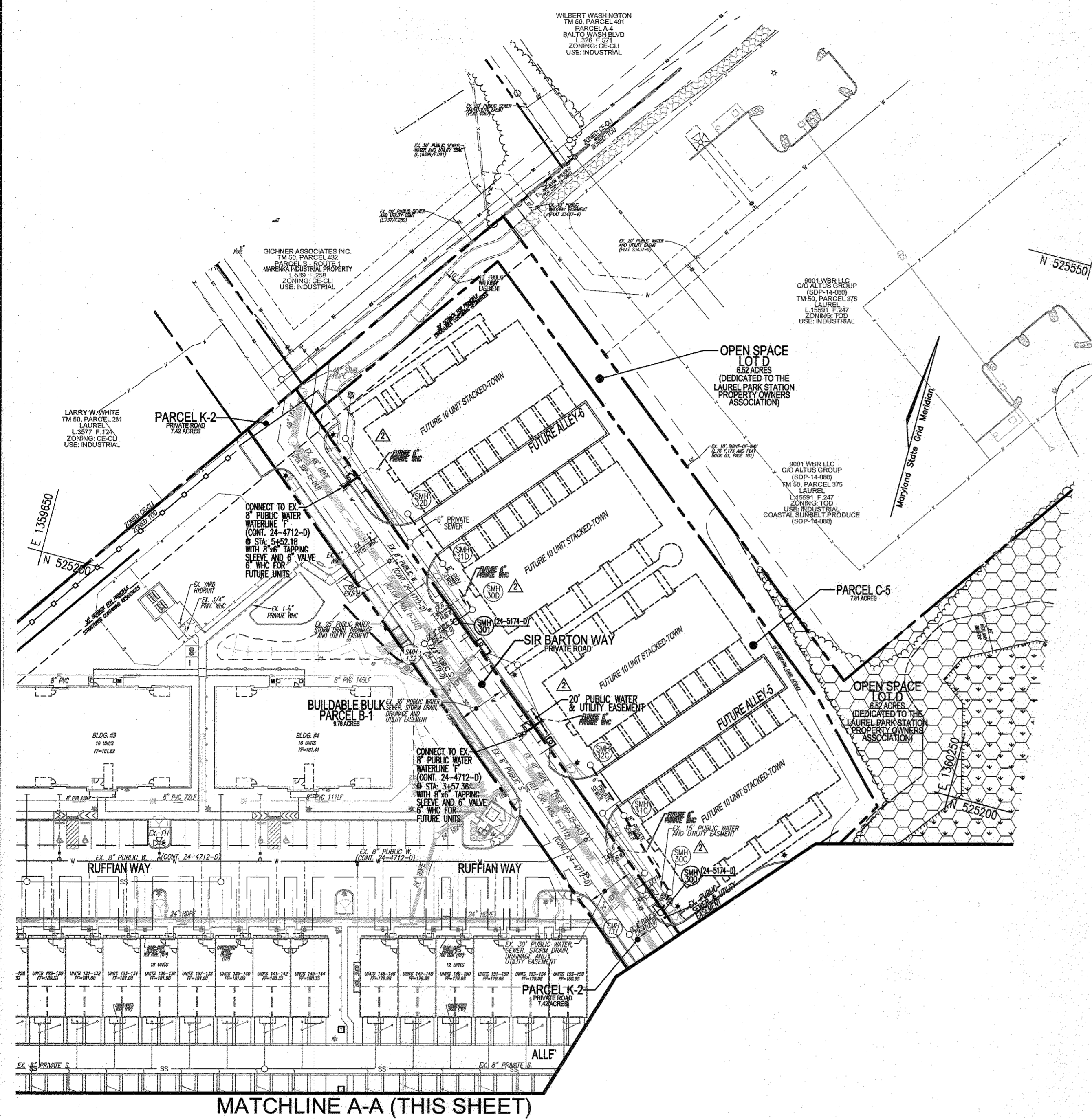
PROFESSIONAL CERTIFICATE
 I HEREBY CERTIFY THAT THESE DOCUMENTS WERE PREPARED OR APPROVED BY ME, AND THAT I AM A DULY LICENSED PROFESSIONAL ENGINEER UNDER THE LAWS OF THE STATE OF MARYLAND, LICENSE NO. 16193, EXPIRES ON DATE 07-27-2024.

DES:	DRN:	CHK:	DATE:	NO.:	REVISION:	DATE:
DZE	JR/DZE	RHV	FEB 2024		REPLACE WHCs and SHCs WITH BUILDING SERVICE CONNECTIONS FOR CONDOMINIUM-STYLE TOWNHOME UNITS	04-26-24
					REVISE TO REMOVE 4" WHC, UTILITY ROOM LOCATIONS, PRIVATE SEWER AND SHC, AND OTHER SITE INFORMATION RELATED TO REDLINES TO CONTRACT 24-4712-D AND SDP-21-016	11-27-23

PARCEL C-5 OWNER
 BEAZER HOMES, LLC
 6085 MARSHLEE DRIVE, SUITE 350
 ELK RIDGE, MD 21075
 (443) 539-9249

OWNER
 TRIPLE BELL FARMS, LLC
 14875 BAYVIEW AVE.
 AURORA, ONTARIO L4G 7A9
 CANADA
 (905) 726-0995

OWNER/DEVELOPER
 20006 DELAWARE, INC.
 455 MAGNA DRIVE
 AURORA, ONTARIO L4G 7A9
 CANADA
 (905) 726-0995



SEDIMENT CONTROL MEASURES WILL BE IMPLEMENTED IN ACCORDANCE WITH SECTION 30B OF THE SPECIFICATIONS AND WITH SITE DEVELOPMENT PLAN SDP-21-016.

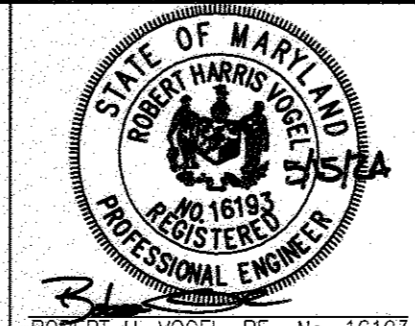
THIS DEVELOPMENT IS APPROVED FOR SOIL EROSION AND SEDIMENT CONTROL BY THE HOWARD SOIL CONSERVATION DISTRICT.

Alvin B. Burtch
SOIL CONSERVATION DISTRICT
DATE: 06/10/24

DEPARTMENT OF PUBLIC WORKS
HOWARD COUNTY, MARYLAND
Michael J. Smith
CHIEF, BUREAU OF UTILITIES
DATE: 5/31/2024

DEPARTMENT OF PLANNING & ZONING
HOWARD COUNTY, MARYLAND
Chad E. Church
CHIEF, DEVELOPMENT ENGINEERING DIVISION
DATE: 6/13/24

VOGEL ENGINEERING
TIMMONS GROUP
3300 NORTH RIDGE ROAD, SUITE 110, ELLICOTT CITY, MD 21043
P: 410.461.7666 F: 410.461.8961 www.timmons.com



PROFESSIONAL CERTIFICATE I HEREBY CERTIFY THAT THESE DOCUMENTS WERE PREPARED OR APPROVED BY ME, AND THAT I AM A DULY LICENSED PROFESSIONAL ENGINEER UNDER THE LAWS OF THE STATE OF MARYLAND, LICENSE NO. 16193, EXPIRATION DATE 09-27-2024.	REPLACE WHCs AND SHCs WITH BUILDING SERVICE CONNECTIONS FOR CONDOMINIUM-STYLE TOWNHOME UNITS	04-26-24
DES: DZE	REMOVE TO REMOVE 4" WHC, UTILITY ROOM LOCATIONS, PRIVATE SEWER AND SHC, AND OTHER SITE INFORMATION RELATED TO REDLINES TO CONTRACT 24-4712-D AND SDP-21-016	12-27-23
DRN: JR/DZE		
CHK: RHV		
DATE: FEB 2024	NO.	REVISION

LAYOUT PLAN
SCALE: 1"=50'

LAYOUT SHEET
FINAL WATER AND SEWER CONSTRUCTION PLAN
CONTRACT NO. 24-5174-D
DATE: 600' SCALE MAP NO. 50
BLOCK NO. 10

OWNER/DEVELOPER
2000S DELAWARE, INC.
455 MAGNA DRIVE
AURORA, ONTARIO
L4G 7A9
CANADA
(905) 776-0995

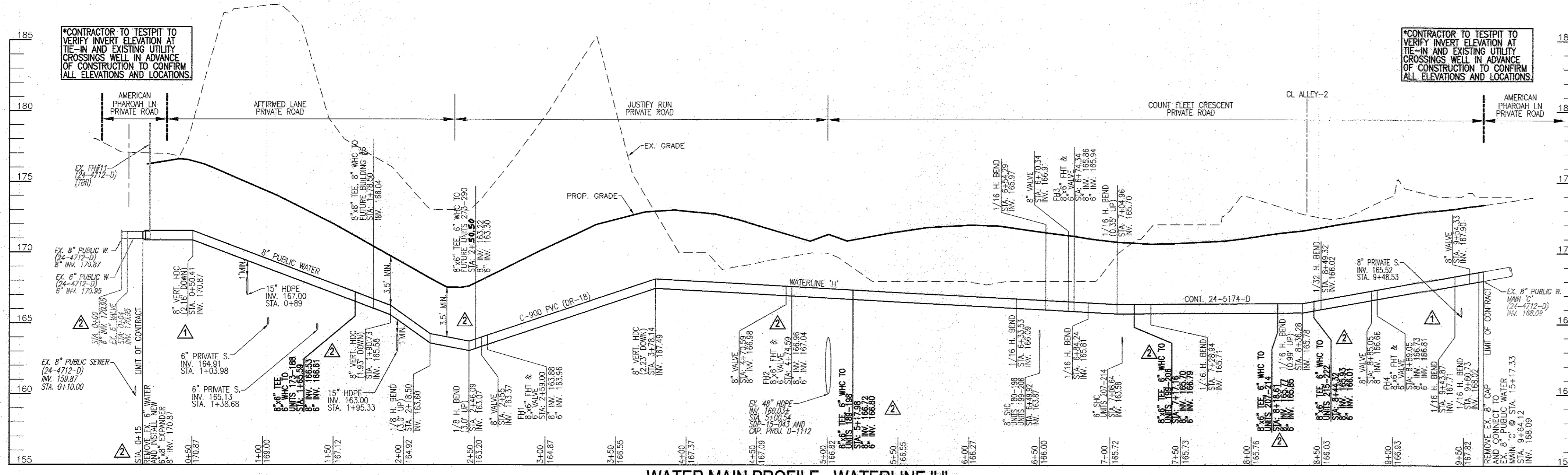
OWNER
TRIPLE BELL FARMS, LLC
14875 BAYVIEW AVE.
AURORA, ONTARIO
L4G 7A9
CANADA
(905) 776-0995

PARCEL C-5 OWNER
BEAZER HOMES, LLC
6085 MARSHALEE DRIVE, SUITE 350
ELK RIDGE, MD 21075
(443) 539-9249

TAX MAP 50, GRID 10
6TH ELECTION DISTRICT

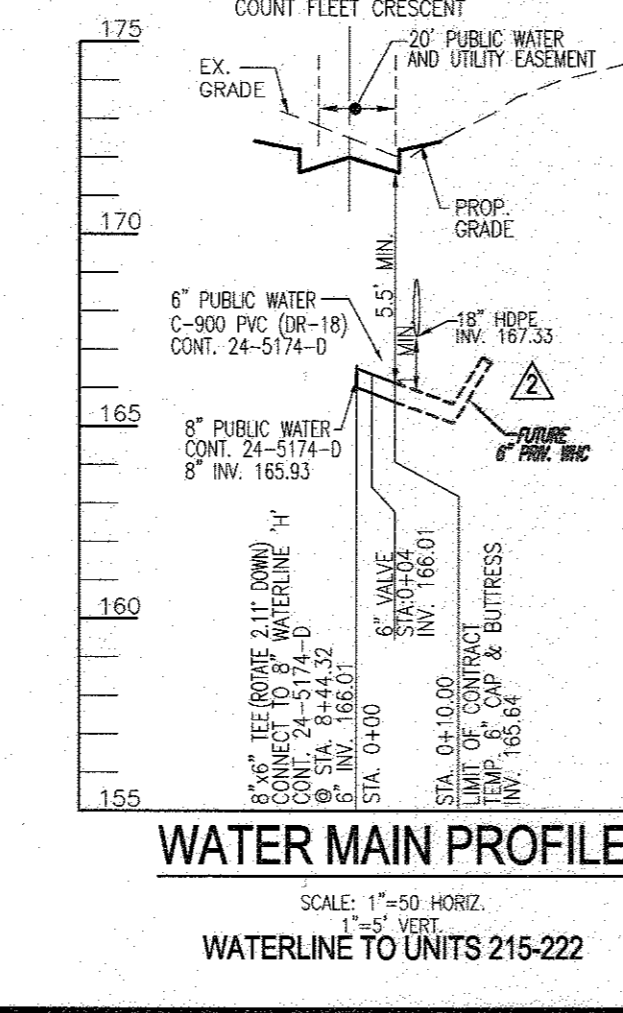
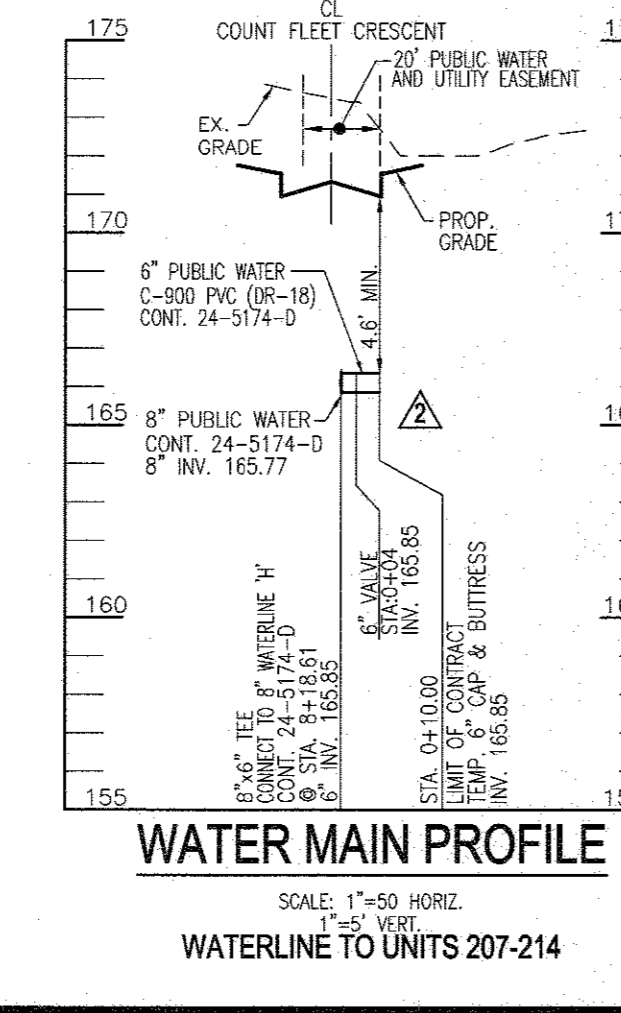
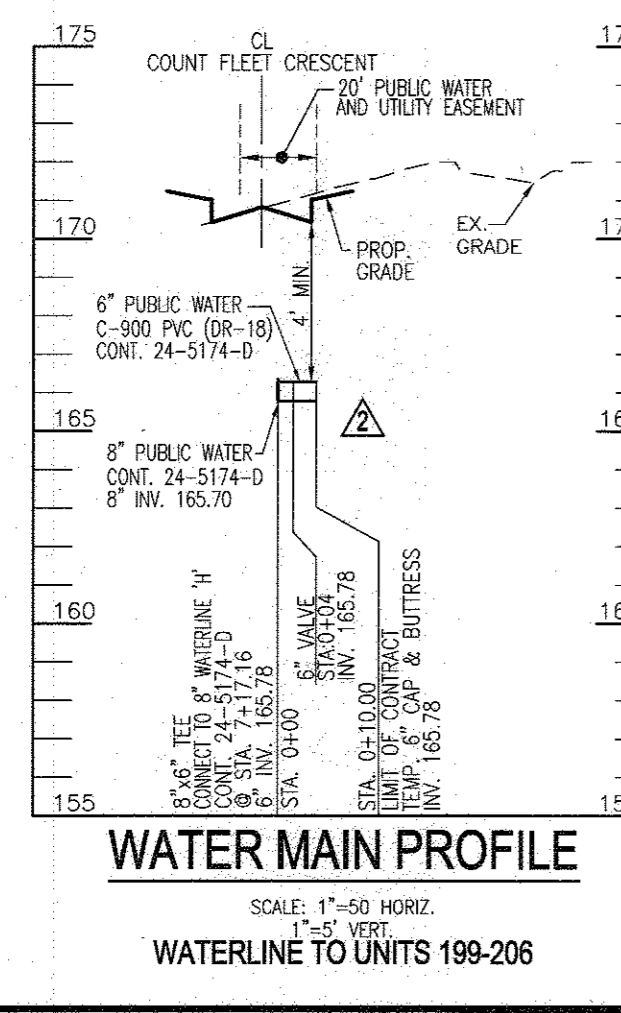
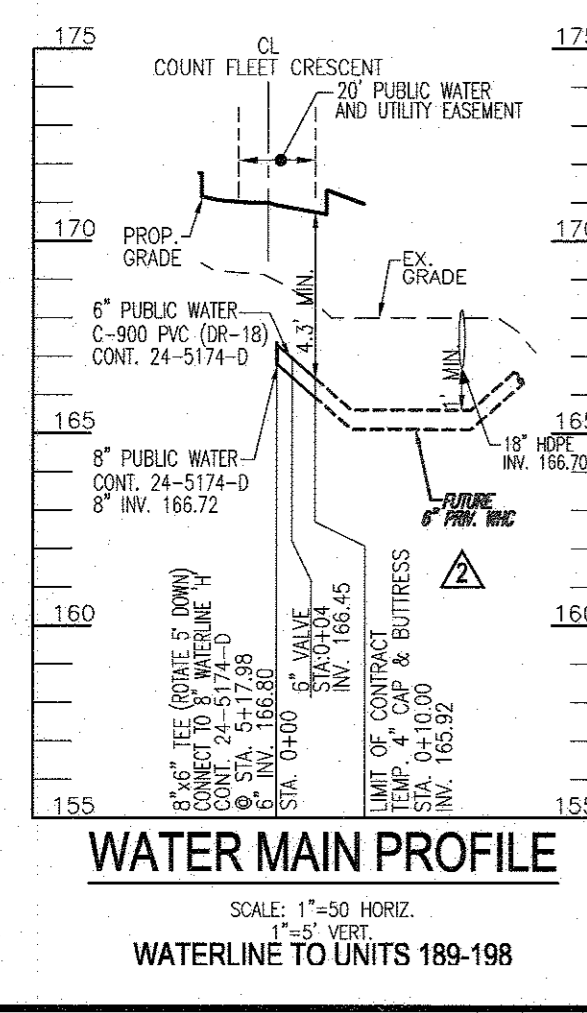
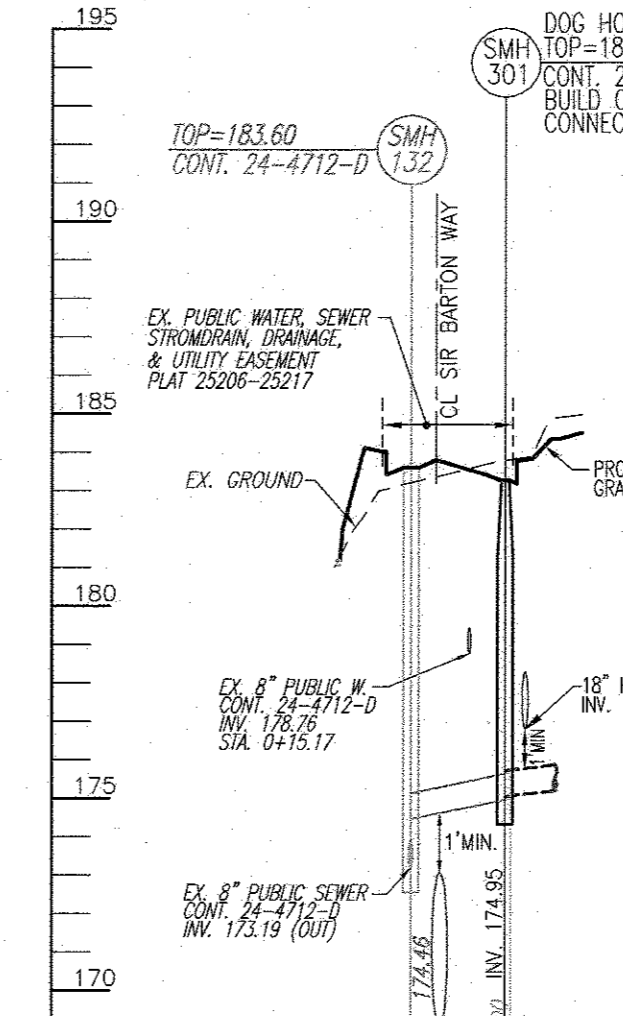
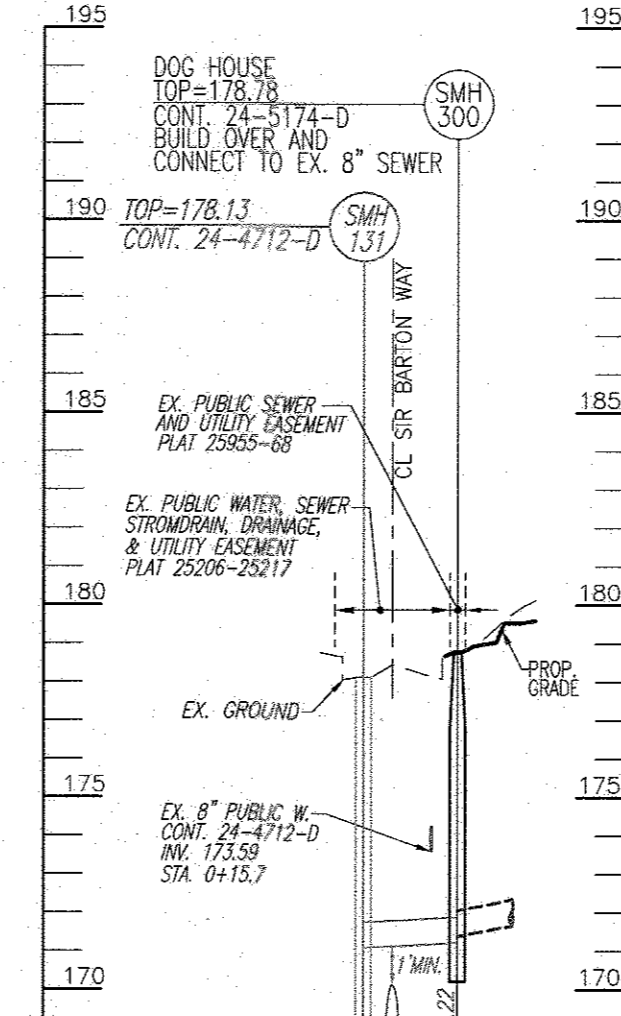
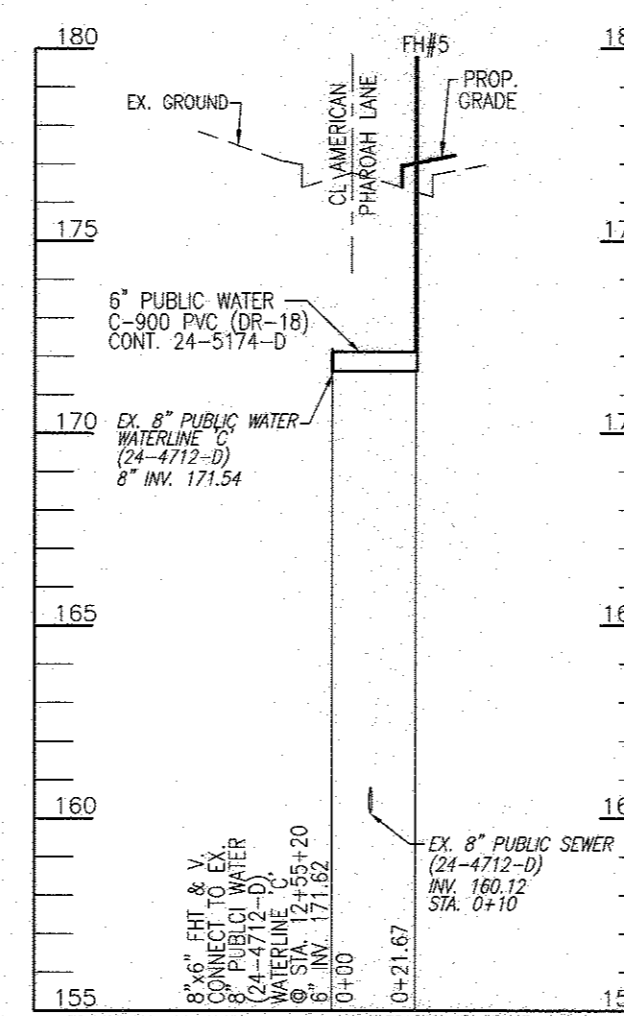
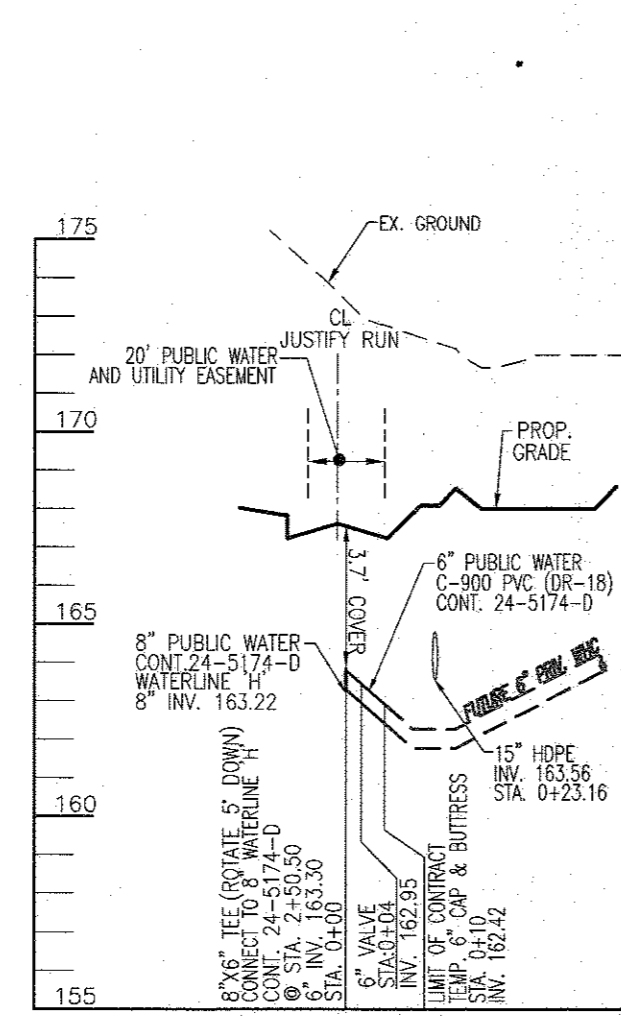
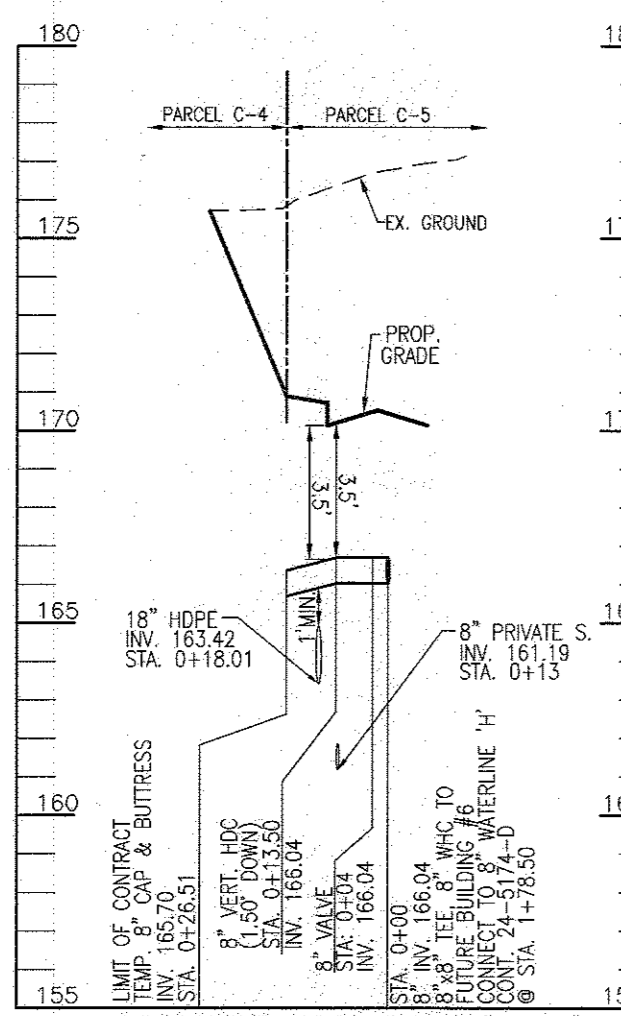
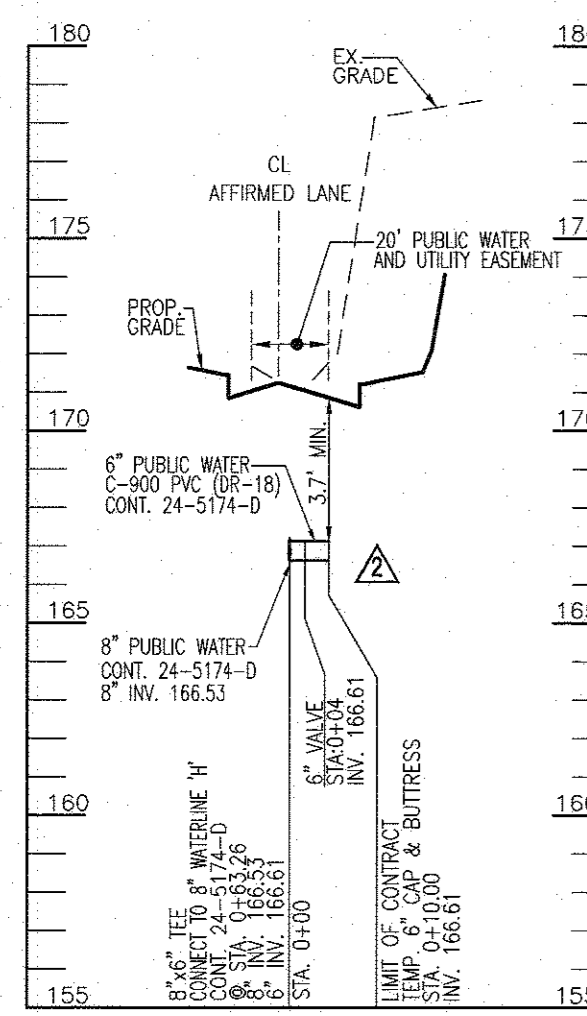
PARCEL 384
HOWARD COUNTY, MARYLAND

SCALE AS SHOWN
SHEET 2 OF 3



WATER MAIN LOCATION CHART	
STATION	APPURTENANCE
WATER LINE 'H'	
0+15	CONNECT TO EX. 6" WATER (LIMIT OF CONTRACT) WITH 6"x8" EXPANDER
0+50.41	8" VERT. HDC (2.16' DOWN)
1+65.59	8"x6" TEE, 6" WMC TO UNITS 173-188
1+78.50	8"x6" TEE, 6" WMC TO FUTURE BUILDING #6
1+90.73	8" VERT. HDC (1.93' DOWN)
2+18.50	1/8" H. BEND (3.0' UP)
2+48.09	1/8" H. BEND (3.0' UP)
2+50.30	8"x6" TEE, 6" WMC TO FUTURE UNITS 273-290
2+55.00	8" VALVE
2+59.00	8"x6" FHT & 6" VALVE
3+78.14	8" VERT. HDC (2.23' DOWN)
4+70.59	8" VALVE
4+74.59	8"x6" FHT & 6" VALVE
5+17.98	8"x6" TEE, 6" WMC TO UNITS 189-198
6+33.53	1/16" H. BEND
6+54.29	1/16" H. BEND
6+70.34	8" VALVE
6+74.34	8"x6" FHT & 6" VALVE
6+84.24	1/16" H. BEND
7+04.96	1/16" H. BEND (0.35' UP)
7+17.16	8"x6" TEE, 6" WMC TO UNITS 199-206
7+28.94	1/16" H. BEND
8+18.61	8"x6" TEE, 6" WMC TO UNITS 207-214
8+36.28	1/16" H. BEND (0.99' UP)
8+44.32	8"x6" TEE, 6" WMC TO UNITS 215-222
8+49.32	1/32" H. BEND
8+55.05	8" VALVE
8+85.05	8"x6" FHT & 6" VALVE
9+43.87	1/16" H. BEND (0.73' UP)
9+50.73	1/16" H. BEND
9+54.33	8" VALVE
9+64.12	CONNECT TO EX. 6" WATER (LIMIT OF CONTRACT)
6" WATER LINE TO UNITS 173-188	
0+00.00	8"x6" TEE, CONNECT TO 8" PUBLIC WATER LINE 'H'
0+04.00	6" VALVE
0+10.00	6" CAP & BUTTRESS (LIMIT OF CONTRACT)
8" WATER LINE TO FUTURE BUILDING 6	
0+00.00	8"x6" TEE, CONNECT TO 8" PUBLIC WATER LINE 'H'
0+04.00	6" VALVE
0+13.50	8" VERT. HDC (1.5' DOWN)
0+26.51	8" CAP & BUTTRESS (LIMIT OF CONTRACT)
6" WATER LINE TO FUTURE UNITS 275-290	
0+00.00	8"x6" TEE, CONNECT TO 8" PUBLIC WATER LINE 'H'
0+04.00	6" VALVE
0+10.00	6" CAP & BUTTRESS (LIMIT OF CONTRACT)
6" WATER LINE TO UNITS 189-198	
0+00.00	8"x6" TEE, CONNECT TO 8" PUBLIC WATER LINE 'H' (ROTATE TEE 5' DOWN)
0+04.00	6" VALVE
0+10.00	6" CAP & BUTTRESS (LIMIT OF CONTRACT)
6" WATER LINE TO UNITS 199-206	
0+00.00	8"x6" TEE, CONNECT TO 8" PUBLIC WATER LINE 'H'
0+04.00	6" VALVE
0+10.00	6" CAP & BUTTRESS (LIMIT OF CONTRACT)
6" WATER LINE TO UNITS 207-214	
0+00.00	8"x6" TEE, CONNECT TO 8" PUBLIC WATER LINE 'H'
0+04.00	6" VALVE
0+10.00	6" CAP & BUTTRESS (LIMIT OF CONTRACT)
6" WATER LINE TO UNITS 215-222	
0+00.00	8"x6" TEE, CONNECT TO 8" PUBLIC WATER LINE 'H' (ROTATE TEE 2.11' DOWN)
0+04.00	6" VALVE
0+10.00	6" CAP & BUTTRESS (LIMIT OF CONTRACT)

*FOR WMC TO UNITS 157-172 AND UNITS 223-232, SEE CONTRACT 24-4712-D



SMH No.	TYPE	LOCATION	TOP ELEV.	INV. IN	INV. OUT	REMARKS
SMH-300	STD. PRECAST MH (G-5.12)	N= 525080.30 E= 1360091.80	178.78	171.22	171.39	DOG HOUSE
SMH-301	STD. PRECAST MH (G-5.12)	N= 525225.45 E= 1359917.39	183.26	175.05	174.95	DOG HOUSE

DEPARTMENT OF PUBLIC WORKS
HOWARD COUNTY, MARYLAND

5/3/2024
DATE

DEPARTMENT OF PLANNING & ZONING
HOWARD COUNTY, MARYLAND

6.13.24
DATE

VOGEL ENGINEERING
TIMMONS GROUP

3300 NORTH RIDGE ROAD, SUITE 110, ELLICOTT CITY, MD 21043
P: 410.461.7666 F: 410.461.8961 www.timmons.com

STATE OF MARYLAND
PROFESSIONAL ENGINEER
ROBERT H. VOGEL, PE No. 16193

DATE	NO.	REVISION	DATE
FEB 2024			
		REPLACE WMCs AND SHCs WITH BUILDING SERVICE CONNECTIONS FOR CONDOMINIUM-STYLE TOWNHOME UNITS	04-26-24
		REVISE TO REMOVE 4" WMC, UTILITY ROOM LOCATIONS, PRIVATE SEWER AND SHC, AND OTHER SITE INFORMATION RELATED TO REDLINES TO CONTRACT 24-4712-D AND SDP-21-016	12-27-23

WATER PROFILES
FINAL WATER AND SEWER
CONSTRUCTION PLAN
CONTRACT NO. 24-5174-D

600' SCALE MAP NO. 50
BLOCK NO. 10

PADOCK POINT- PHASE 3A
(FORMERLY KNOWN AS LAUREL PARK STATION)
76 STACKED TOWN
PARCELS C-5 & K-2
ZONED: TOD

SCALE AS SHOWN
SHEET 3 OF 3

TAX MAP 50, GRID 10
6TH ELECTION DISTRICT

PARCEL 384
HOWARD COUNTY, MARYLAND

OWNER/DEVELOPER
20006 DELAWARE, INC.
455 MAGNA DRIVE
AURORA, ONTARIO
L4G 7A9
CANADA
(905) 725-0995

