

GENERAL NOTES

PART I

- APPROXIMATE LOCATIONS OF EXISTING MAINS ARE SHOWN. THE CONTRACTOR SHALL TAKE ALL NECESSARY PRECAUTIONS TO PROTECT EXISTING MAINS AND SERVICES AND MAINTAIN UNINTERRUPTED SERVICE. ANY DAMAGE INCURRED SHALL BE REPAIRED IMMEDIATELY TO THE SATISFACTION OF THE ENGINEER AT THE CONTRACTOR'S EXPENSE.
- TOPOGRAPHIC FIELD SURVEYS WERE PERFORMED IN OCTOBER, 2019 BY BENCHMARK ENGINEERING, INC.
- HORIZONTAL AND VERTICAL SURVEY CONTROLS:
THE COORDINATES SHOWN ON THE DRAWINGS ARE BASED ON MARYLAND STATE REFERENCE SYSTEM NAD 83/91 AS PROJECTED BY HOWARD COUNTY GEODETIC CONTROL STATIONS NO. 48FB AND NO. 47AA.
- ALL VERTICAL CONTROLS ARE BASED ON NAVD '88. VERTICAL CONTROLS PROVIDED ON THE DRAWINGS ARE 3805 AND 3806.
- ALL PIPE ELEVATIONS SHOWN ARE INVERT ELEVATIONS UNLESS OTHERWISE NOTED ON THE PLANS.
- CLEAR ALL UTILITIES BY A MINIMUM OF 12 INCHES. CLEAR ALL POLES BY 5'-0" MINIMUM OR TUNNEL AS REQUIRED UNLESS OTHERWISE NOTED. THE OWNER HAS CONTACTED THE UTILITY COMPANIES AND HAS MADE ARRANGEMENTS FOR BRACING OF POLES AS SHOWN ON THE DRAWINGS. IN THE EVENT THE CONTRACTOR'S WORK REQUIRES THE BRACING OF ADDITIONAL POLES, ANY COST INCURRED BY THE OWNER FOR THE BRACING OF ADDITIONAL POLES OR DAMAGES SHALL BE DEDUCTED FROM MONIES OWED THE CONTRACTOR. THE CONTRACTOR SHALL COORDINATE WITH THE UTILITY COMPANIES TO SCHEDULE THE BRACING OF THE POLES.
- FOR DETAILS NOT SHOWN ON THE DRAWING, AND FOR MATERIALS AND CONSTRUCTION METHODS, USE HOWARD COUNTY DESIGN MANUAL VOLUME IV, STANDARD SPECIFICATIONS AND DETAILS FOR CONSTRUCTION (LATEST EDITION). THE CONTRACTOR SHALL HAVE A COPY OF VOLUME IV ON THE JOB.
- WHERE TEST PITS HAVE BEEN MADE ON EXISTING UTILITIES, THEY ARE NOTED BY THE SYMBOL AT THE LOCATIONS OF THE TEST PITS. A NOTE OR NOTES CONTAINING THE RESULTS OF THE TEST PIT OR PITS IS INCLUDED IN THE DRAWINGS. EXISTING UTILITIES IN THE VICINITY OF THE PROPOSED WORK FOR WHICH TEST PITS HAVE NOT BEEN DUG SHALL BE LOCATED BY THE CONTRACTOR TWO WEEKS IN ADVANCE OF CONSTRUCTION OPERATIONS AT HIS OWN EXPENSE.
- THE CONTRACTOR SHALL NOTIFY THE FOLLOWING UTILITY COMPANIES OR AGENCIES AT LEAST FIVE WORKING DAYS BEFORE STARTING WORK SHOWN ON THESE PLANS:
 AT&T.....1-800-252-1133
 BGE (CONTRACTOR SERVICES).....410-637-8713
 BGE (EMERGENCY).....410-666-0103
 BUREAU OF UTILITIES.....410-313-4900
 COLONIAL PIPELINE CO.....410-795-1390
 MISS UTILITY.....1-800-257-7777
 STATE HIGHWAY ADMINISTRATION.....410-531-5533
 VERIZON.....1-800-743-0033

- TREES AND SHRUBS ARE TO BE PROTECTED FROM DAMAGE TO THE MAXIMUM EXTENT. TREES AND SHRUBS LOCATED WITHIN THE CONSTRUCTION STRIP ARE NOT TO BE REMOVED OR DAMAGED BY THE CONTRACTOR.
- THE CONTRACTOR SHALL REMOVE TREES, STUMPS AND ROOTS ALONG LINE OF EXCAVATION. PAYMENT FOR SUCH REMOVAL SHALL BE INCLUDED IN THE UNIT PRICE BID FOR CONSTRUCTION OF THE MAIN.
- THE CONTRACTOR SHALL NOTIFY THE BUREAU OF HIGHWAYS, HOWARD COUNTY, AT (410)-313-7450 AT LEAST FIVE WORKING DAYS BEFORE OPEN CUTTING OR BORING/JACKING OF ANY COUNTY ROAD FOR LAYING WATER/SEWER MAINS OR HOUSE CONNECTIONS. THE APPROVAL OF THESE DRAWINGS WILL CONSTITUTE COMPLIANCE WITH DPW REQUIREMENTS PER SECTION 18.114(a) OF THE HOWARD COUNTY CODE.

PART II WATER

- ALL WATER MAINS TO BE PVC C900 DR18 UNLESS OTHERWISE NOTED.
- TOPS OF ALL WATER MAINS SHALL HAVE A MINIMUM OF 3'-6" OF COVER UNLESS OTHERWISE NOTED.
- VALVES ADJACENT TO TEES SHALL BE STRAPPED TO TEES.
- ALL FITTINGS SHALL BE BUTTRESSED OR ANCHORED WITH CONCRETE IN ACCORDANCE WITH STANDARD DETAILS UNLESS OTHERWISE PROVIDED FOR ON THE DRAWINGS.
- FIRE HYDRANTS SHALL BE SET TO THE BURY LINE ELEVATIONS SHOWN ON THE DRAWINGS. ALL FIRE HYDRANTS SHALL BE INSTALLED IN ACCORDANCE WITH THE STANDARD DETAILS. THE SOIL AROUND THE FIRE HYDRANT SHALL BE COMPACTED IN ACCORDANCE WITH SECTION 1000 AND SECTION 1005 OF THE STANDARD SPECIFICATIONS.
- THE CONTRACTOR SHALL NOT OPERATE ANY WATER MAIN VALVES ON THE EXISTING WATER SYSTEM.
- TRACER WIRE AND CONTINUITY TEST STATIONS SHALL BE INSTALLED ON ALL PVC C900 WATER MAINS IN ACCORDANCE WITH THE HOWARD COUNTY DESIGN MANUAL.
- FOR PVC C900 WATER MAINS, ALL RECORDS FOR THE QUALITY CONTROL AND QUALIFICATION TEST REQUIREMENTS NOTED IN SECTION 5.1 OF THE ANWA STANDARD C900 FOR PVC PRESSURE PIPE SHALL BE SUBMITTED WITH THE PIPE MATERIAL CERTIFICATIONS OR SHOP DRAWINGS PRIOR TO APPROVAL OF THE MATERIAL FOR USE. THE TEST RECORDS SHALL BE FOR THE PIPE TO BE INSTALLED UNDER THIS CONTRACT. ALL PVC PIPE SHALL CONTAIN MARKINGS TO ALLOW CROSS REFERENCING OF THE PIPE SUPPLIED TO THE TEST RECORDS RECEIVED.
- UNLESS OTHERWISE NOTED ON THE PLANS OR IN THE SPECIFICATIONS SACRIFICIAL ANODES SHALL BE INSTALLED ON ALL VALVES AND METALLIC FITTINGS USED WITH PVC WATER MAINS IN ACCORDANCE WITH VOLUME IV, STANDARD SPECIFICATIONS AND DETAILS FOR CONSTRUCTION, SEVENTEEN (17) POUND MAGNESIUM ANODES SHALL BE INSTALLED ON ALL VALVES AND DUCTILE IRON FITTINGS INCLUDING RESTRAINTS AND HARNESSSES. TWELVE (12) POUND ZINC ANODES SHALL BE INSTALLED ON ALL STAINLESS STEEL FITTINGS AND SADDLES USED WITH PVC MAINS. ALL "TEES" USED WITH PVC MAINS SHALL BE DUCTILE IRON.
- PROPER ASSEMBLY OF GASKETED PVC PIPE JOINTS: THE MANUFACTURER'S INSERTION LINE OF GASKETED PVC PIPE JOINTS INDICATES THE MAXIMUM DEPTH OF INSERTION OF THE SPIGOT INTO THE BELL. AFTER ASSEMBLY OF THE JOINT, THE INSERTION LINE SHALL REMAIN VISIBLE. DUAL INSERTION LINES ON GASKETED PVC PIPE INDICATE THE MAXIMUM AND MINIMUM DEPTH OF INSERTION OF THE SPIGOT INTO THE BELL. THE CONTRACTOR SHALL NOT OVER INSERT OR OVER HOME THE SPIGOT INTO THE BELL OF PVC PIPE.
- ALL CHANGES IN HORIZONTAL AND VERTICAL DIRECTION OF PVC WATER PIPE SHALL BE MADE WITH STANDARD BENDS, 5-DEGREE SWEEPS OR HIGH DEFLECTION (HD) COUPLINGS. NO BENDING OF THE PIPE OR DEFLECTING OF PVC PIPE JOINTS IS PERMITTED, WHERE HIGH DEFLECTION COUPLINGS OR 5-DEGREE SWEEPS ARE PERMITTED, THE CONTRACTOR SHALL PROVIDE ONE FULL PIPE LENGTH (20-FOOT LONG) ON EITHER SIDE OF THE HIGH DEFLECTION COUPLING OR 5-DEGREE SWEEP. THE CONTRACTOR SHALL USE A VIBRATORY PLATE COMPACTOR OR OTHER APPROVED MEANS TO THOROUGHLY COMPACT THE #57 STONE ON BOTH SIDES OF THE HIGH DEFLECTION COUPLING OR 5-DEGREE SWEEP, TAKING CARE NOT TO USE COMPACTION EQUIPMENT DIRECTLY OVER THE FITTING.
- PVC HIGH DEFLECTION COUPLINGS SHALL BE LIMITED TO A TOTAL DEFLECTION OF 3-DEGREES (1 1/2 DEGREE ON EITHER END OF THE COUPLING), SHALL BE RATED FOR A MINIMUM 200 PSI MEETING THE REQUIREMENTS OF ANWA C900, SHALL HAVE A MINIMUM LAY LENGTH OF 6-INCHES AND SHALL HAVE CENTER STOPS. PVC HIGH DEFLECTION COUPLINGS SHALL BE CERTAINTED PVC HIGH DEFLECTION (HD) STOP COUPLINGS OR EQUAL.
- 5-DEGREE SWEEPS SHALL BE BELL BY SPIGOT, RATED FOR A MINIMUM 225 PSI, DR18 MEETING THE REQUIREMENTS OF ANWA C900 AND SHALL BE MULTI FITTINGS (PEX) BLUE BRUTE DR18 OR EQUAL.
- WHEN PVC HIGH DEFLECTION COUPLINGS OR PVC 5-DEGREE SWEEPS ARE USED TO FACILITATE CHANGES IN HORIZONTAL OR VERTICAL ALIGNMENTS OF ANWA C900 PVC PIPELINES, THE CONTRACTOR SHALL INSTALL DEVICES FOR THE PREVENTION OF OVER-INSERTION OF THE PVC PIPE SPIGOTS OR PLAIN ENDS INTO THE PUSH ON BELL JOINT ON BOTH SIDES OF THE HIGH DEFLECTION COUPLINGS AND 5 DEGREE SWEEPS. BELL STOPS SHALL BE PLACED AT THE PROPER INSERTION LINE FOR THE FITTING. THE BELL STOP SHALL BE MANUFACTURED OF DUCTILE IRON AND INCORPORATE AN EXPANSION RETENTION SPRING TO ALLOW FOR PIPE EXPANSION AND CONTRACTION. THE BELL STOPS SHALL BE SERIES 5000 MECA-STOP, AS MANUFACTURED BY EDMA IRON, INC. OR APPROVED EQUAL.

- WHEN PVC HIGH DEFLECTION COUPLINGS OR PVC 5-DEGREE SWEEPS ARE USED TO FACILITATE CHANGES IN HORIZONTAL OR VERTICAL ALIGNMENTS OF ANWA C900 PVC PIPELINES, THE CONTRACTOR SHALL INSTALL DEVICES FOR THE PREVENTION OF OVER-INSERTION OF THE PVC PIPE SPIGOTS OR PLAIN ENDS INTO THE PUSH ON BELL JOINT ON BOTH SIDES OF THE HIGH DEFLECTION COUPLINGS AND 5 DEGREE SWEEPS. BELL STOPS SHALL BE PLACED AT THE PROPER INSERTION LINE FOR THE FITTING. THE BELL STOP SHALL BE MANUFACTURED OF DUCTILE IRON AND INCORPORATE AN EXPANSION RETENTION SPRING TO ALLOW FOR PIPE EXPANSION AND CONTRACTION. THE BELL STOPS SHALL BE SERIES 5000 MECA-STOP, AS MANUFACTURED BY EDMA IRON, INC. OR APPROVED EQUAL.

PART III SEWER

- ALL SEWER MAINS SHALL BE D.I.P. OR P.V.C. UNLESS OTHERWISE NOTED.
- ALL MANHOLES SHALL BE 4'-0" INSIDE DIAMETER UNLESS OTHERWISE NOTED.
- FORCE MAINS SHALL BE PVC ONLY.
- MANHOLES SHOWN WITH 12" AND 16" WALLS ARE FOR BRICK MANHOLES ONLY.
- MANHOLES DESIGNATED W.T. IN PLAN AND PROFILE SHALL HAVE WATER TIGHT FRAME AND COVER. STANDARD DETAIL CS-52 WHERE WATER TIGHT MANHOLES FRAMES AND COVERS ARE USED, SET TOP OF FRAME 1'-6" ABOVE FINISHED GRADE UNLESS OTHERWISE NOTED ON THE DRAWINGS.
- HOUSE(S) WITH THE SYMBOL "C.N.S." INDICATES THAT CELLAR CANNOT BE SERVED.

THIS PLAN IS APPROVED FOR SOIL EROSION AND SEDIMENT CONTROL BY THE HOWARD SOIL CONSERVATION DISTRICT.

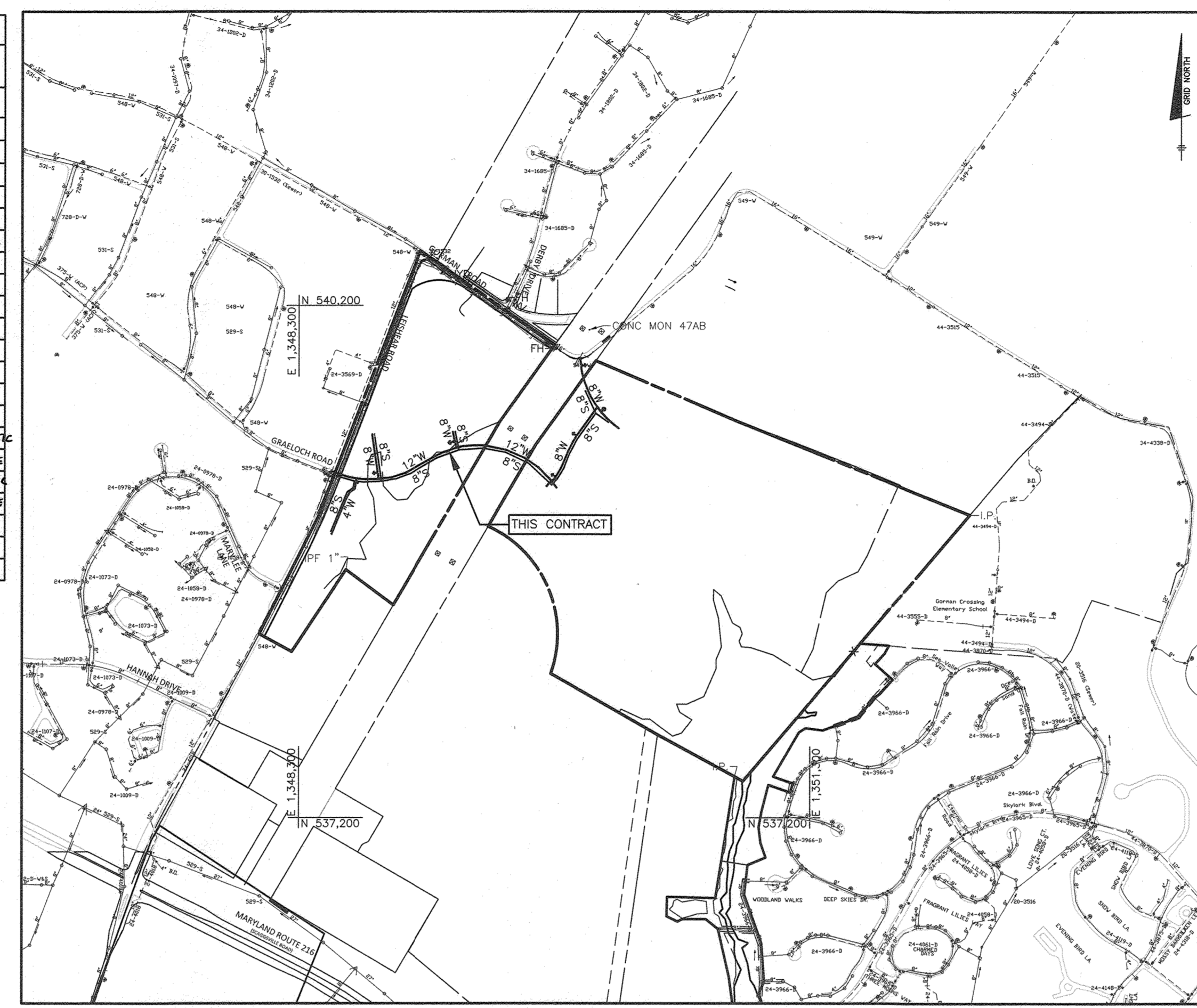
Howard Soil Conservation District
 HOWARD SOIL CONSERVATION DISTRICT
 DATE: 06/24/21

SEDIMENT CONTROL MEASURES FOR THIS CONTRACT WILL BE IMPLEMENTED IN ACCORDANCE WITH SECTION 508 OF THE HOWARD COUNTY STANDARD SPECIFICATIONS AND AS PER F-21-025.

DEPARTMENT OF PUBLIC WORKS
 HOWARD COUNTY, MARYLAND
 DATE: 6-22-21
 CHIEF, BUREAU OF UTILITIES

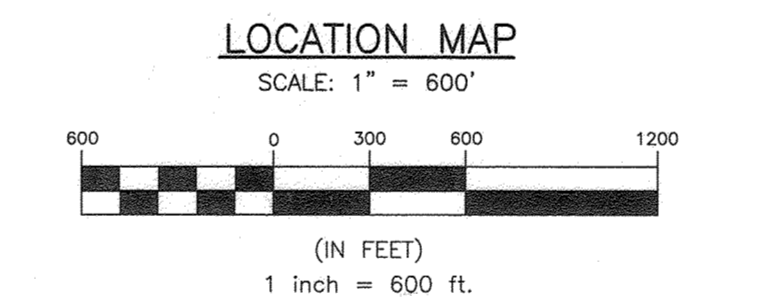
ITEMS	QUANTITIES ESTIMATED	ASBUILT		
		QUANTITIES	TYPE	MANU/ SUPPLIER
4" WATER (PVC C-900 DR18)	344 LF	320 LF	PVC	NATIONAL PIPE
8" WATER (PVC C-900 DR18)	1233 LF	1610 LF	PVC	NATIONAL PIPE
12" WATER (PVC C-900 DR18)	1426 LF	1461 LF	PVC	NATIONAL PIPE
6" FIRE HYDRANT, TEE & VALVE	7	7	DIP	TYLER UNION
1.5" VHC	689 LF	692	COPPER	MUELLER IND.
1" METER VAULT	33	33	CONCRETE	HORNE CONCRETE
18"x8" TAPPING SLEEVE AND VALVE (TS&V)	1	1	STEEL	SMITH BLAIR
12"x12" TAPPING SLEEVE AND VALVE (TS&V)	1	1	DIP	TYLER UNION
12"x12" WATER CROSS	1	1	DIP	TYLER UNION
12"x8" WATER TEE	4	4	DIP	TYLER UNION
4" CAP AND BUTTRISS	1	1	DIP	TYLER UNION
8" CAP AND BUTTRISS	4	4	DIP	TYLER UNION
1 1/2" DRAIN	1	1	BRASS	A Y Mc DONALD
8" DIP SEWER	632 LF	674	DIP	AMERICAN CAST IRON PIPE
8" PVC SDR-35 SEWER	2266 LF	2403	PLASTIC	NATIONAL PIPE PLASTIC
MANHOLES	24	23	CONCRETE	HORNE CONCRETE
4" SHC	1049 LF	1096	PLASTIC	NATIONAL PIPE PLASTIC
CLEANOUTS	45	45	CONCRETE	HORNE CONCRETE

NAME OF UTILITY CONTRACTOR: HTI CONTRACTORS
 SURVEY AND DRAFTING DIVISION AS-BUILT DATE:



NOTE:
 ALL WATER HOUSE CONNECTIONS ARE TO BE 1.5" WITH A 1" METER (OUTSIDE SETTING).
 ALL TWIN VHC'S SHALL COMPLY WITH W-3.32
 ALL SEWER HOUSE CONNECTIONS SHALL BE 4" PVC.

NOTE:
 DMV 2-21-010, A DESIGN MANUAL WAIVER TO ALLOW FOUR (4) LOTS PROPOSED IN THIS DEVELOPMENT (LOTS 2, 3, 4, AND 5) TO NOT BE PROVIDED WITH GRAVITY SEWER SERVICE TO THE CELLAR, THERE BY WAIVING HOWARD COUNTY DESIGN MANUAL VOLUME II, WATER AND SEWER, SECTION 4.3.B.3.b WAS APPROVED ON FEBRUARY 1, 2021.



TYPE OF BUILDING:	RESIDENTIAL - SFD & SFA
NUMBER OF UNITS:	45
NUMBER OF SHC'S:	45
NUMBER OF VHC'S:	45
DRAINAGE AREA:	HAMMOND BRANCH
TREATMENT PLANT:	LITTLE PATUXENT WRP
WATER ZONE:	550 SOUTH
TEST GRADIENT:	828
TEST PRESSURE:	204

Professional Certification I hereby certify that these documents were prepared or approved by me, and that I am a duly licensed professional engineer under the laws of the State of Maryland. License No. 22390, Expiration Date: 6-30-2023.

OWNER: ESC WELLINGTON, L.C.
 5074 DORSEY HALL DRIVE, SUITE 205
 ELLICOTT CITY, MARYLAND 21042
 410-720-3021

DEVELOPER: ESC WELLINGTON, L.C.
 5074 DORSEY HALL DRIVE, SUITE 205
 ELLICOTT CITY, MARYLAND 21042
 410-720-3021

BENCHMARK ENGINEERS & LAND SURVEYORS & PLANNERS
 ENGINEERING, INC.
 8480 BALTIMORE NATIONAL PIKE SUITE 315 A ELLICOTT CITY, MARYLAND 21043
 (P) 410-465-8105 (F) 410-465-6644
 WWW.BE-CVLENGINEERING.COM

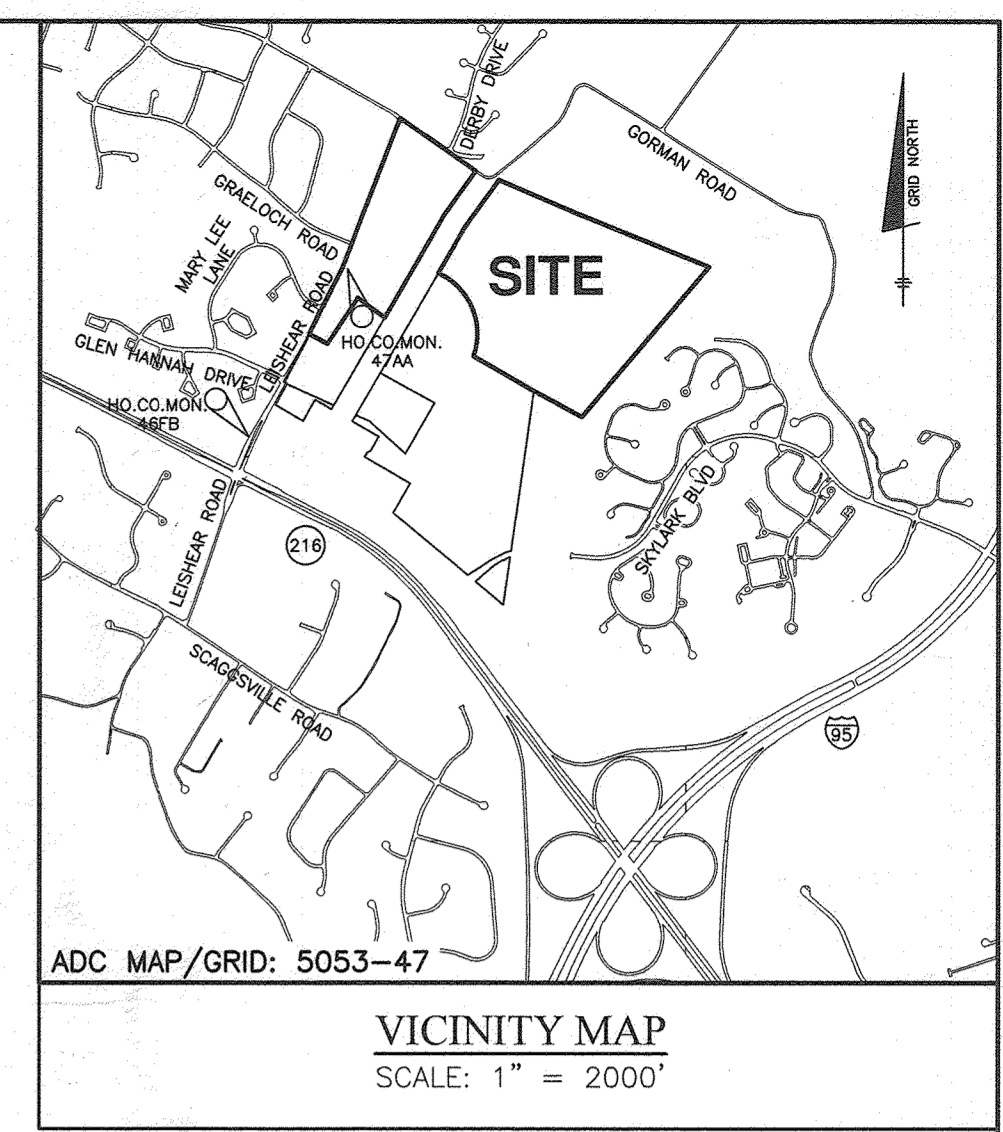
DESIGN: LDD
 DRAFT: LDD
 CHK: DBT
 DATE: 6/4/2021

WRA	AS BUILT	3/15/22
BY	NO.	REVISIONS
DATE:	6/4/2021	DATE

PUBLIC WATER AND SEWER TITLE SHEET
 600 SCALE MAP: BLOCK:

WELLINGTON FARMS PHASE 1 SECTION 1
 Lots 1 thru 45; Open Space Lots 46 thru 53; Bulk Parcels 'A' and 'B'
 TAX MAP: 46 - GRID: 6 - PARCEL: 163
 ZONED: R-20-MXD-3 / R-SC-MXD-3
 ELECTION DISTRICT NO. 6 - HOWARD COUNTY, MARYLAND
 CONTRACT NO. 24-5135-D

SCALE: AS SHOWN
 SHEET NO. 1 OF 6

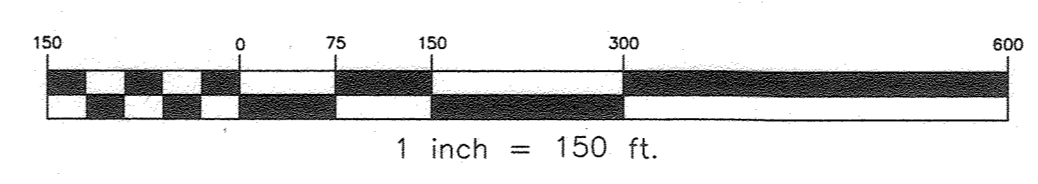
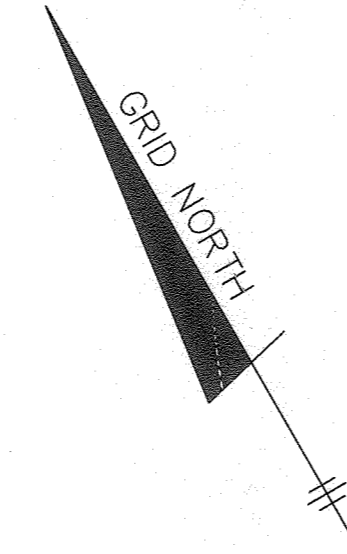


LEGEND

	OHL	EXIST. OVERHEAD ELECTRIC
	E	EXIST. OVERHEAD ELECTRIC TRANSMISSION LINES
	W	EXIST. WATER MAIN
	S	EXIST. SEWER MAIN
		PROP. STORM DRAIN
		PROP. SEWER MAIN
		PROP. SEWER MANHOLE
		PROP. TERMINAL MANHOLE
		PROP. SEWER HOUSE CONNECTIONS
		PROP. WATER MAIN
		PROP. FIRE HYDRANT
		PROP. VALVE
		PROP. PLUG & BUTTRISS
		PROP. WATER HOUSE CONNECTION

SHEET INDEX

NO.	DESCRIPTION
1	TITLE SHEET
2	PHASING KEY SHEET
3	PUBLIC WATER AND SEWER PLAN
4	PUBLIC WATER AND SEWER PROFILE
5	PUBLIC WATER AND SEWER PROFILE
6	PUBLIC WATER AND SEWER PROFILE



OWNER:
ESC WELLINGTON, L.C.
5074 DORSEY HALL DRIVE, SUITE 205
ELLCOTT CITY, MARYLAND 21042
410-720-3021

DEVELOPER:
ESC WELLINGTON, L.C.
5074 DORSEY HALL DRIVE, SUITE 205
ELLCOTT CITY, MARYLAND 21042
410-720-3021

MARYLAND AND VIRGINIA
MILK PRODUCERS
COOPERATIVE ASSOCIATION, INC.
PARCEL 'E'
PLAT #20137
11.946 AC.

MARYLAND AND VIRGINIA
MILK PRODUCERS
COOPERATIVE ASSOCIATION, INC.
PARCEL 'D'
PLAT #20137
75.577 AC.

MARYLAND AND VIRGINIA
MILK PRODUCERS
COOPERATIVE ASSOCIATION, INC.
PARCEL 'B'
PLAT #20137
75.577 AC.

HOWARD RESEARCH AND
DEVELOPMENT CORP.
TM 47 PARCEL 837
5289 / 330
ZONED: PEC-MXD-3

Professional Certification I hereby certify that these documents were prepared or approved by me, and that I am a duly licensed professional engineer under the laws of the State of Maryland. License No. 22390, Expiration Date: 6-30-2023.

DEPARTMENT OF PUBLIC WORKS
HOWARD COUNTY, MARYLAND

[Signature]
6-22-21
CHIEF, BUREAU OF UTILITIES

DEPARTMENT OF PLANNING AND ZONING
HOWARD COUNTY, MARYLAND

[Signature]
7-8-21
CHIEF, DEVELOPMENT ENGINEERING DIVISION

BENCHMARK
ENGINEERS & LAND SURVEYORS & PLANNERS
ENGINEERING, INC.
8480 BALTIMORE NATIONAL PIKE SUITE 315 A ELLCOTT CITY, MARYLAND 21043
(P) 410-465-8105 (F) 410-465-6644
WWW.BE-CIVILENGINEERING.COM

[Signature]
6-3-21



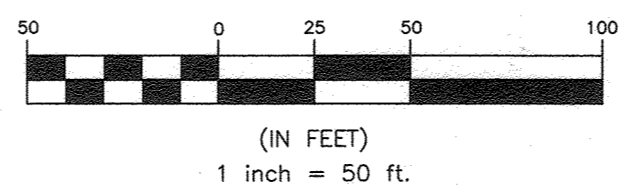
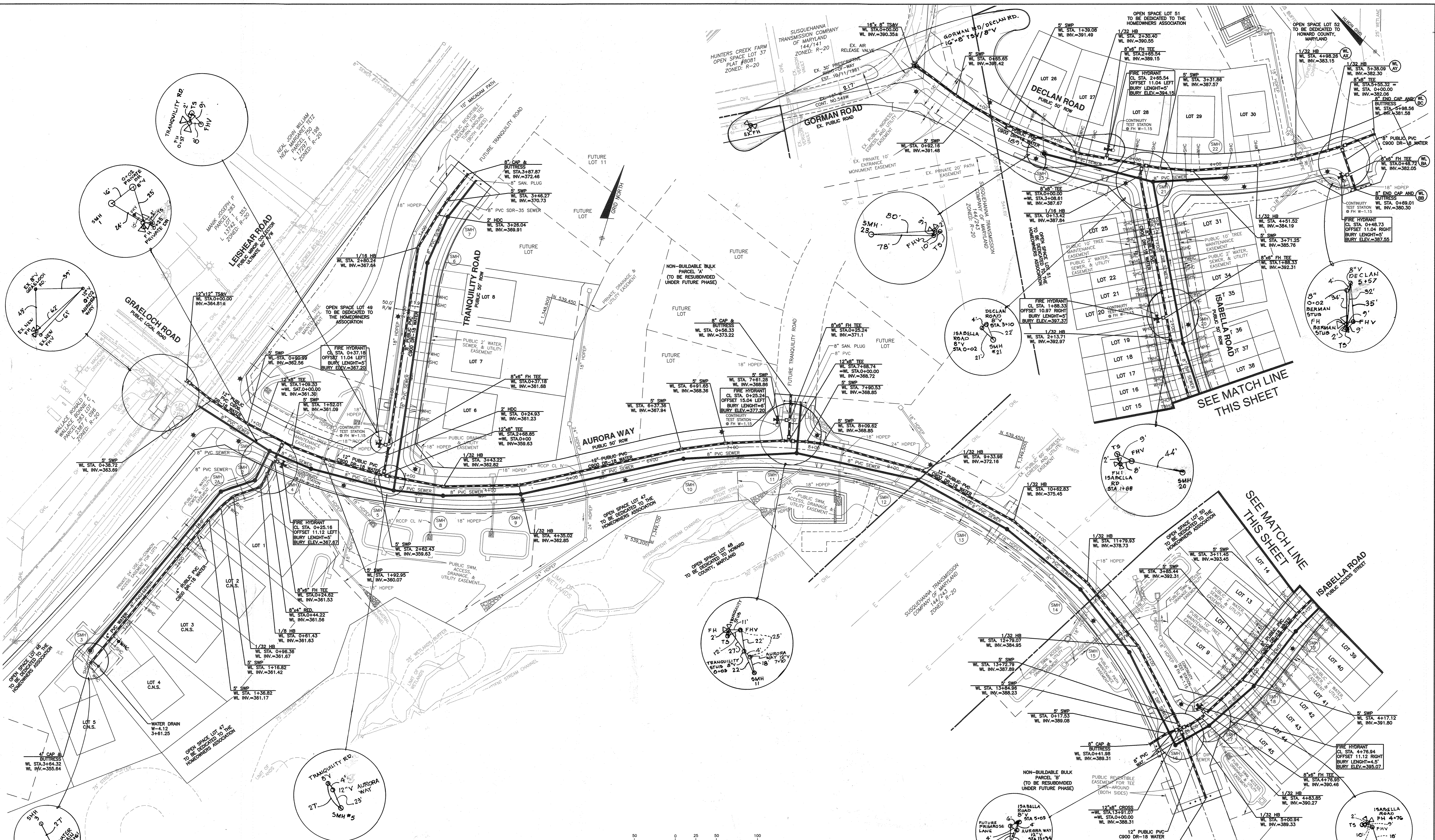
DESIGN: DBT/LDD					
DRAFT: DBT/LDD					
CHK: DBT					
DATE: 6/4/2021					
BY	NO.	REVISIONS	DATE	600 SCALE MAP:	BLOCK:

PHASING KEY SHEET

WELLINGTON FARMS
PHASE 1 SECTION 1
Lots 1 thru 45; Open Space Lots 46 thru 53; Bulk Parcels 'A' and 'B'
TAX MAP: 46 - GRID: 6 - PARCEL: 163
ZONED: R-20-MXD-3 / R-SC-MXD-3
ELECTION DISTRICT NO. 6 - HOWARD COUNTY, MARYLAND
CONTRACT NO. 24-5135-D

SCALE:
AS SHOWN

SHEET NO.
2 OF 6



OWNER: ESC WELLINGTON, L.C.
5074 DORSEY HALL DRIVE, SUITE 205
ELLCOTT CITY, MARYLAND 21042
410-720-3021

DEVELOPER: ESC WELLINGTON, L.C.
5074 DORSEY HALL DRIVE, SUITE 205
ELLCOTT CITY, MARYLAND 21042
410-720-3021

Professional Certification: I hereby certify that these documents were prepared or approved by me, and that I am a duly licensed professional engineer under the laws of the State of Maryland, License No. 22390, Expiration Date: 6-30-2023.

DEPARTMENT OF PUBLIC WORKS
HOWARD COUNTY, MARYLAND

[Signature]
6-22-24
CHIEF, BUREAU OF UTILITIES

DEPARTMENT OF PLANNING AND ZONING
HOWARD COUNTY, MARYLAND

[Signature]
7-8-21
CHIEF, DEVELOPMENT ENGINEERING DIVISION

BENCHMARK
ENGINEERS & LAND SURVEYORS & PLANNERS
ENGINEERING, INC.
8490 BALTIMORE NATIONAL PIKE & SUITE 315 & ELLCOTT CITY, MARYLAND 21043
(P) 410-465-8105 (F) 410-465-6644
WWW.BE-CIVLENGINEERING.COM



DESIGN: LDD			
DRAFT: LDD			
CHK: DBT	WRA	AS BUILT: 3/15/22	
DATE: 6/4/2021	BEI	CORRECT B' CAP STATION ALONG AURORA WAY	8.25.21
BY NO.		RELOCATE WHC FOR LOT 5 OUT OF THE TURNAROUND	
		REVISIONS	DATE

PUBLIC WATER AND SEWER PLAN

600 SCALE MAP: BLOCK:

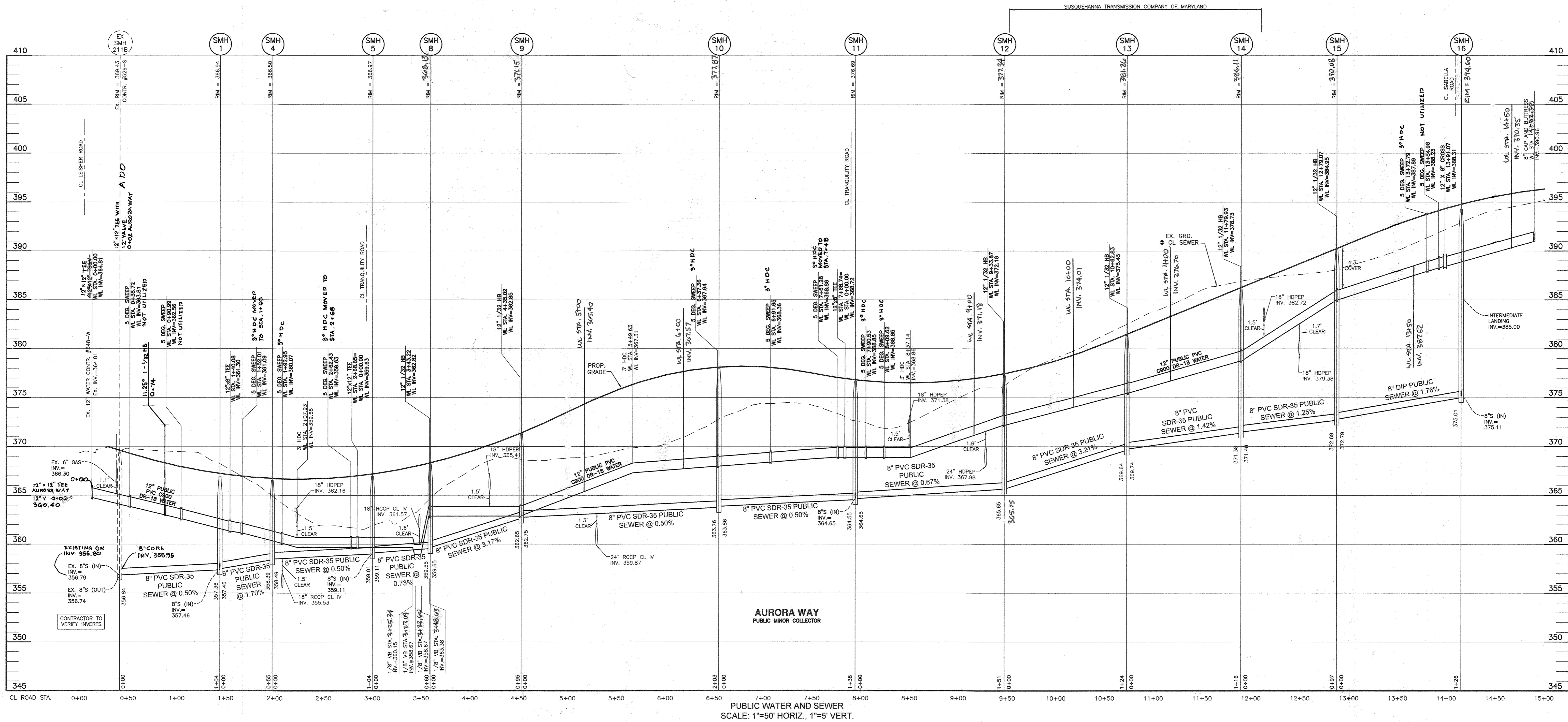
WELLINGTON FARMS
PHASE 1 SECTION 1
Lots 1 thru 45; Open Space Lots 46 thru 53; Bulk Parcels 'A' and 'B'
TAX MAP: 46 - GRID: 6 PARCEL: 163
ZONED: R-20-MXD-3 / R-SC-MXD-3
ELECTION DISTRICT NO. 6 - HOWARD COUNTY, MARYLAND
CONTRACT NO. 24-5135-D

SCALE: AS SHOWN

SHEET NO. 3 OF 6

STRUCTURE TABLE						
NUMBER	LOCATION	INVERT IN	INVERT OUT	RIM ELEV.	STD. DETAIL	REMARKS
1	CL STA 114.57 AUREORA; 10.49' EIGHT	357.46	357.36	366.94	4-5.12	
2	CL STA 114.57 AUREORA; 50.32' EIGHT	357.49	357.39	368.17	4-5.12	
2A	N 539107.81 E 1348583.28	358.08	357.98	368.17	4-5.12	
3	N 538876.98 E 1348487.11	—	357.96	364.79	4-5.12 5-1.31	
4	CL STA 1468.27 AUREORA; 10.27' EIGHT	358.49	358.39	366.50	4-5.12	
5	CL STA 2170.74 AUREORA; 9.65' EIGHT	359.11	359.01	366.97	4-5.12	
6	CL STA 2170.34 TRANQUILITY; 4.34' EIGHT	363.11	360.51	372.66	4-5.12 5-1.32	
7	CL STA 3132.77 TRANQUILITY; 4.29' EIGHT	364.83	364.73	375.09	4-5.12	
8	CL STA 3130.15 AUREORA; 9.21' EIGHT	359.65	359.55	368.13	4-5.12	
9	CL STA 4123.24 AUREORA; 9.60' EIGHT	362.75	362.65	371.15	4-5.12	
10	CL STA 6125.42 AUREORA; 7.34' EIGHT	363.86	363.76	372.87	4-5.12	
11	CL STA 7105.24 AUREORA; 5.35' EIGHT	364.65	364.55	376.69	4-5.12	

STRUCTURE TABLE						
NUMBER	LOCATION	INVERT IN	INVERT OUT	RIM ELEV.	STD. DETAIL	REMARKS
12	CL STA 9117.03 AUREORA; 3.21' EIGHT	365.75	365.65	377.34	4-5.12	
13	CL STA 10443.18 AUREORA; 5.83' EIGHT	369.74	369.64	381.26	4-5.12	
14	CL STA 11460.13 AUREORA; 3.83' EIGHT	371.48	371.38	386.11	4-5.12	
15	CL STA 12157.89 AUREORA; 4.91' EIGHT	372.79	372.69	390.08	4-5.12	
16	CL STA 13185.42 AUREORA; 5.80' EIGHT	375.11	375.01	394.60	4-5.12	
17	CL STA 01391.65 ISABELLA; 8.00' EIGHT	375.64	375.54	394.41	4-5.12	
18	CL STA 1110.43 ISABELLA; 7.00' EIGHT	376.30	376.20	395.84	4-5.12	
19	CL STA 1193.94 ISABELLA; 7.00' EIGHT	376.82	376.72	397.47	4-5.12	
20	CL STA 2198.84 ISABELLA; 7.00' EIGHT	377.43	377.34	397.51	4-5.12	
21	CL STA 4198.63 ISABELLA; 7.00' EIGHT	378.47	378.37	397.15	4-5.12	
22	CL STA 4128.91 DELANI; 4.31' EIGHT	—	379.11	389.98	4-5.12 5-1.31	
23	CL STA 2106.78 DELANI; 8.32' EIGHT	—	381.59	395.94	4-5.12 5-1.31	



PUBLIC WATER AND SEWER
SCALE: 1"=50' HORIZ., 1"=5' VERT.

OWNER: ESC WELLINGTON, L.C.
5074 DORSEY HALL DRIVE, SUITE 205
ELLICOTT CITY, MARYLAND 21042
410-720-2021

DEVELOPER: ESC WELLINGTON, L.C.
5074 DORSEY HALL DRIVE, SUITE 205
ELLICOTT CITY, MARYLAND 21042
410-720-2021

Professional Certification. I hereby certify that these documents were prepared or approved by me, and that I am a duly licensed professional engineer under the laws of the State of Maryland, License No. 22390, Expiration Date: 6-30-2023.

DEPARTMENT OF PUBLIC WORKS
HOWARD COUNTY, MARYLAND

[Signature]
6-22-21
CHIEF, BUREAU OF UTILITIES

DEPARTMENT OF PLANNING AND ZONING
HOWARD COUNTY, MARYLAND

[Signature]
7-8-21
CHIEF, DEVELOPMENT ENGINEERING DIVISION

BENCHMARK
ENGINEERS & LAND SURVEYORS & PLANNERS
ENGINEERING, INC.
8480 BALTIMORE NATIONAL PIKE & SUITE 315 A ELLICOTT CITY, MARYLAND 21043
(P) 410-465-8105 (F) 410-465-6844
WWW.BE-CVENGINEERING.COM



DESIGN: LDD
DRAFT: LDD
CHK: DBT
DATE: 6/4/2021

WRA
BEI

AS BUILT
REVISE LOCATIONS, INVERTS, RIM ELEV'S W/ STRUCTURE SCHEDULE, REVISE RIM ELEV'S IN PROFILE VIEW CORRECT WL SHOTGUN AND INVERTS

3/15/22
8.25.21

BY NO. REVISIONS DATE

PUBLIC WATER AND SEWER
PROFILES

600 SCALE MAP: BLOCK:

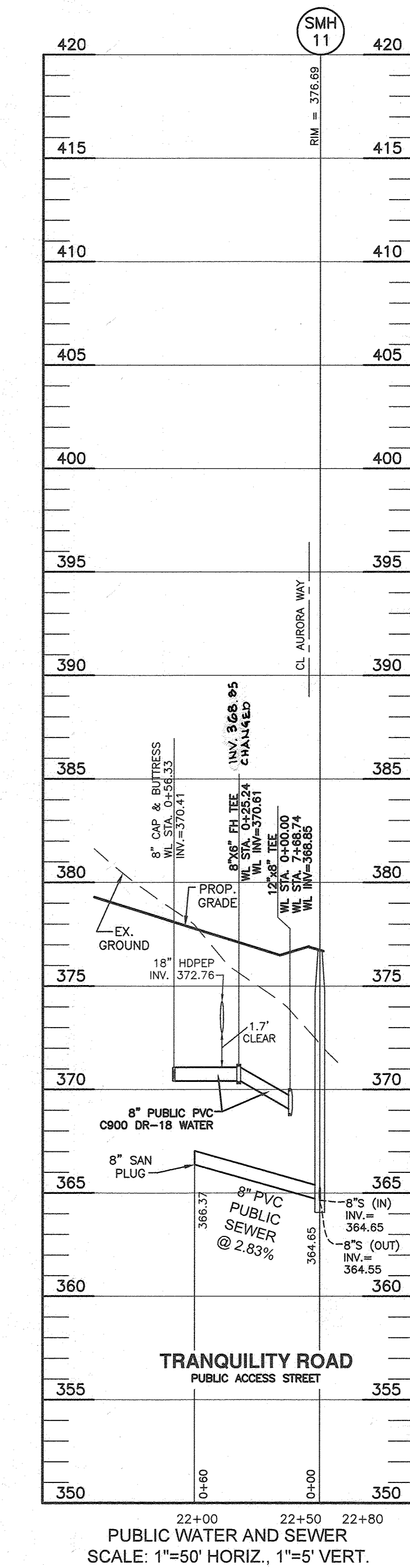
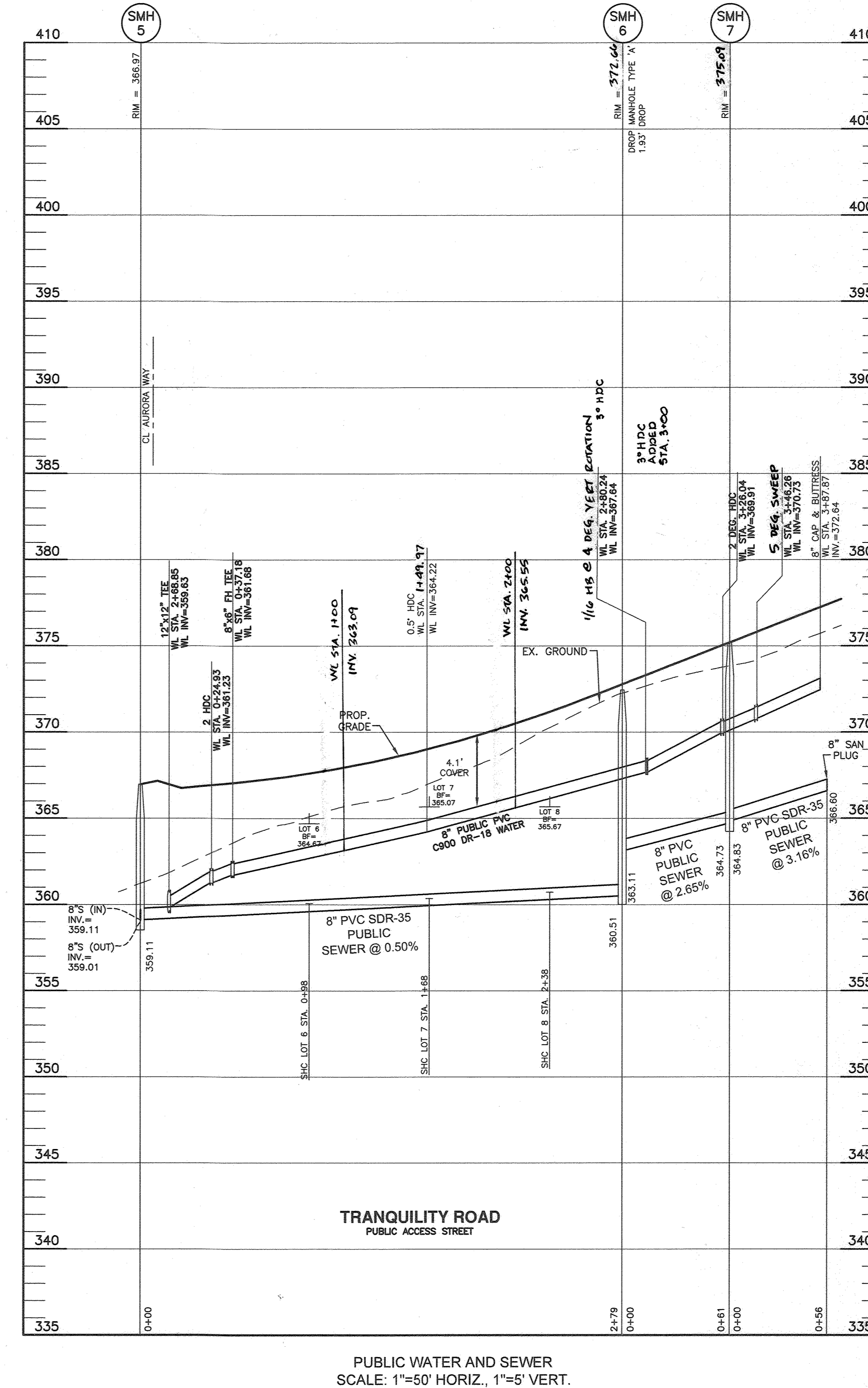
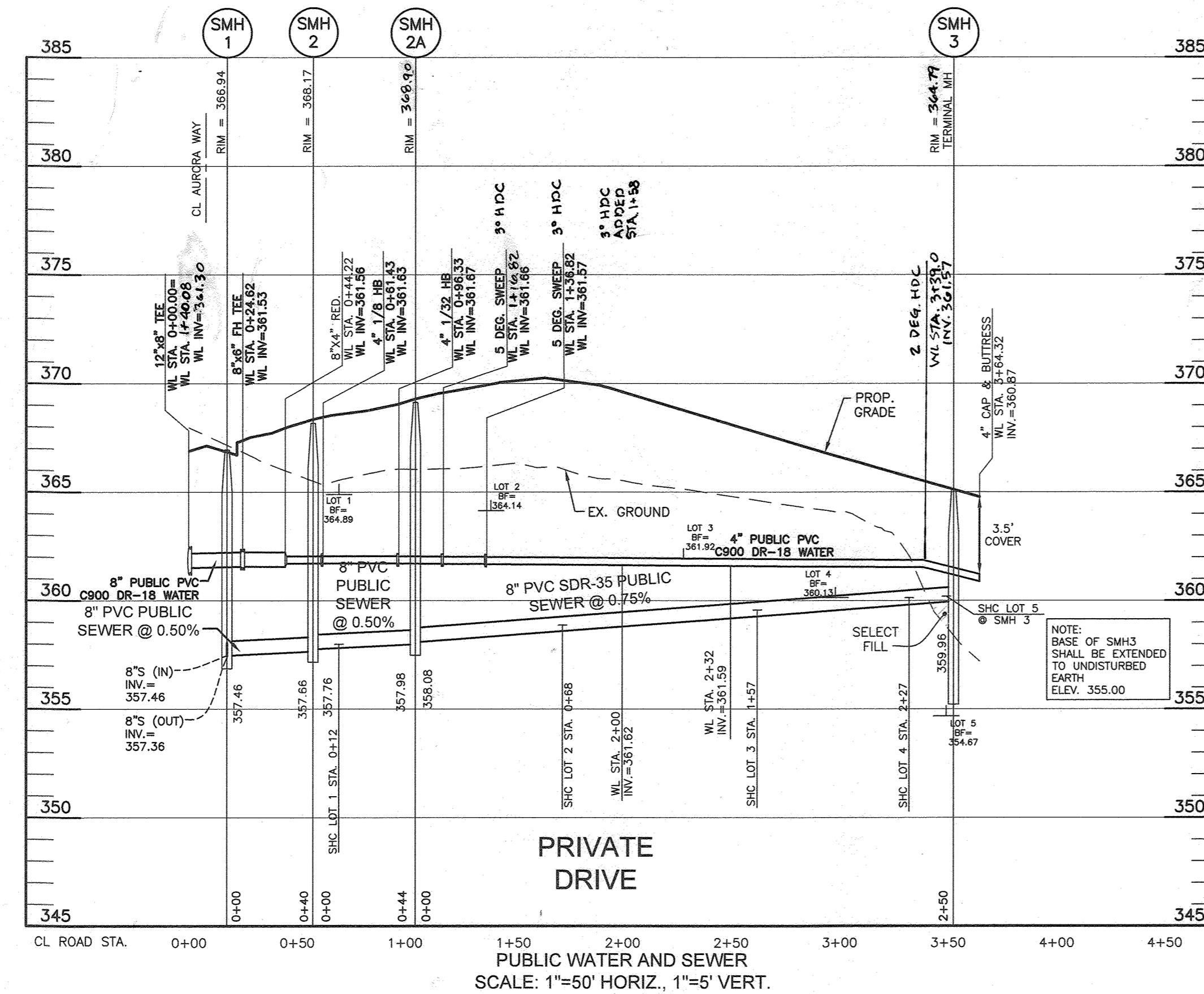
WELLINGTON FARMS
PHASE 1 SECTION 1
Lots 1 thru 45; Open Space Lots 46 thru 53; Bulk Parcels 'A' and 'B'
TAX MAP: 46 - GRID: 6 - PARCEL: 183
ZONED: R-20-MXD-3 / R-SC-MD-3
ELECTION DISTRICT NO. 6 - HOWARD COUNTY, MARYLAND
CONTRACT NO. 24-5135-D

SCALE: AS SHOWN
SHEET NO. 4 OF 6

WATER APPURTENANCES SCHEDULE			
APPURTENANCE	WATER LINE STATION	NORTHING	EASTING
12"x12" TEE	WL STA. 0+00.00	539229.4729	1348492.4964
5 DEG. SWEEP	WL STA. 0+38.72	539210.9046	1348539.8202
5 DEG. SWEEP	WL STA. 0+90.99	539196.3206	1348590.0135
12"x8" TEE	WL STA. 1+40.08	539192.9909	1348608.0535
8"x8" FH TEE	WL STA. 0+24.62	539163.5644	1348634.2323
8"x4" RED.	WL STA. 0+37.28	539156.5154	1348600.8638
4" 1/8 HB	WL STA. 1+40.08	539127.2782	1348628.0444
4" 1/32 HB	WL STA. 1+15.40	539107.0983	1348599.5682
5 DEG. SWEEP	WL STA. 1+16.92	539089.8532	1348588.5204
5 DEG. SWEEP	WL STA. 1+02.94	539072.1270	1348579.2473
5 DEG. SWEEP	WL STA. 1+52.01	539185.8167	1348650.1249
5 DEG. SWEEP	WL STA. 1+92.95	539182.8115	1348690.9521
3 DEG. HDC	WL STA. 2+07.93	539183.0235	1348705.9306
3 DEG. HDC	WL STA. 2+62.43	539183.7695	1348760.4248
2 DEG. HDC	WL STA. 0+24.93	539209.2408	1348764.1395
8"x8" FH TEE	WL STA. 0+37.18	539221.3609	1348782.3358
0.5 DEG. HDC	WL STA. 1+49.77	539333.1737	1348745.7075
5 DEG. SWEEP	WL STA. 2+80.24	539461.7749	1348726.5567
2 DEG. HDC	WL STA. 3+26.04	539506.1321	1348737.9573
5 DEG. SWEEP	WL STA. 3+46.27	539525.4948	1348743.7814
END CAP	WL STA. 3+87.87	539564.3266	1348758.7088
12"x8" TEE	WL STA. 2+68.85	539184.4567	1348766.8078
12" 1/32 HB	WL STA. 3+43.22	539192.4181	1348840.7584
12" 1/32 HB	WL STA. 4+35.02	539220.8031	1348928.0581
3 DEG. HDC	WL STA. 4+60.00	539276.8188	1349028.0467
5 DEG. SWEEP	WL STA. 6+37.36	539319.7065	1349104.5785
5 DEG. SWEEP	WL STA. 6+91.65	539342.1340	1349154.0225
5 DEG. SWEEP	WL STA. 7+61.28	539365.2603	1349219.9978
12"x8" TEE	WL STA. 7+68.74	539367.1157	1349226.9246
5 DEG. SWEEP	WL STA. 7+90.53	539372.5328	1349248.0245
5 DEG. SWEEP	WL STA. 8+09.62	539375.6601	1349266.8575
3 DEG. HDC	WL STA. 8+37.14	539376.5906	1349294.3603
8"x8" TEE	WL STA. 0+25.24	539391.5651	1349220.6477
END CAP	WL STA. 0+56.33	539421.6838	1349212.9357
12" 1/32 HB	WL STA. 9+33.98	539379.9479	1349391.0321
12" 1/32 HB	WL STA. 10+62.83	539353.4629	1349517.2449
12" 1/32 HB	WL STA. 11+79.93	539307.5116	1349624.9544
12" 1/32 HB	WL STA. 12+79.07	539251.5674	1349706.7990
5 DEG. SWEEP	WL STA. 13+72.79	539249.0115	1349709.3062
5 DEG. SWEEP	WL STA. 13+84.96	539175.5902	1349780.5551
12" X 8" CROSS/	WL STA. 13+91.19	539170.7403	1349784.2640
8" CAP	WL STA. 14+82.30	539098.5776	1349839.2199

WATER HOUSE CONNECTION AS-BUILT LOCATION TABLE				
BLDG	ADDRESS	LOCATION DIMENSION 1	LOCATION DIMENSION 2	
1	7016 AURORA WAY	SMH #2 33'	SMH #2A 22'	
2	7012 AURORA WAY	SMH #2 113'	SMH #2A 81'	
3	7008 AURORA WAY	DRAIN (3+61) 71'	SMH #3 85'	
4	7004 AURORA WAY	DRAIN (3+61) 43'	SMH #3 36'	
5	7000 AURORA WAY	DRAIN (3+61) 17'	SMH #3 27'	
6	7100 TRANQUILITY ROAD	FHV 59'	FH 64'	
7	7104 TRANQUILITY ROAD	FHV 123'	SMH #6 111'	
8	7108 TRANQUILITY ROAD	SMH #6 43'	SMH #7 96'	
9	7301 ISABELLA ROAD	SMH #18 34'	SMH #19 92'	
10	7303 ISABELLA ROAD	SMH #18 42'	SMH #19 63'	
11	7305 ISABELLA ROAD	TWIN		
12	7307 ISABELLA ROAD	SMH #18 75'	SMH #19 95'	
13	7309 ISABELLA ROAD	TWIN		
14	7313 ISABELLA ROAD	SMH #19 47'	SMH #20 77'	
15	7315 ISABELLA ROAD	TWIN		
16	7317 ISABELLA ROAD	FH 79'	FHV 79'	
17	7319 ISABELLA ROAD	FH 51'	FHV 62'	
18	7321 ISABELLA ROAD	TWIN		
19	7323 ISABELLA ROAD	FH 12'	FHV 18'	
20	7327 ISABELLA ROAD	FH 31'	FHV 32'	
21	7329 ISABELLA ROAD	TWIN		
22	7331 ISABELLA ROAD	SMH #21 79'	FH 69'	
23	7333 ISABELLA ROAD	TWIN		
24	7335 ISABELLA ROAD	8" VALVE 76'	SMH #21 64'	
25	7337 ISABELLA ROAD	TWIN		
26	7401 DECLAN ROAD	SMH #22 32'	8" V (STUB) 100'	
27	7405 DECLAN ROAD	SMH #21 66'	SMH #22 42'	
28	7409 DECLAN ROAD	FH 34'	8" V (3+10) 22'	
29	7413 DECLAN ROAD	FH 38'	FHV 43'	
30	7417 DECLAN ROAD	SMH #25 45'	FH 100'	
31	7332 ISABELLA ROAD	8" VALVE 89'	SMH #21 69'	
32	7330 ISABELLA ROAD	FH 1+85 80'	FHV 76'	
33	7328 ISABELLA ROAD	TWIN		
34	7326 ISABELLA ROAD	FH 1+85 50'	FHV 42'	
35	7324 ISABELLA ROAD	TWIN		
36	7320 ISABELLA ROAD	FHV 55'	SMH #20 21'	
37	7318 ISABELLA ROAD	FHV 72'	SMH #20 34'	
38	7316 ISABELLA ROAD	SMH #20 64'	SMH #19 40'	
39	7314 ISABELLA ROAD	TWIN		
40	7312 ISABELLA ROAD	SMH #19 21'	SMH #18 96'	
41	7308 ISABELLA ROAD	SMH #19 51'	SMH #18 40'	
42	7306 ISABELLA ROAD	SMH #19 75'	SMH #18 21'	
43	7304 ISABELLA ROAD	TWIN		
44	7302 ISABELLA ROAD	SMH #18 36'	SMH #17 49'	
45	7300 ISABELLA ROAD	TWIN		

SEWER HOUSE CONNECTION AS-BUILT LOCATION TABLE				
BLDG	ADDRESS	LOCATION DIMENSION 1	LOCATION DIMENSION 2	
1	7016 AURORA WAY	SMH #2 27'	SMH #2A 33'	
2	7012 AURORA WAY	SMH #2 104'	SMH #2A 72'	
3	7008 AURORA WAY	DRAIN (3+61) 101'	SMH #3 96'	
4	7004 AURORA WAY	DRAIN (3+61) 34'	SMH #3 31'	
5	7000 AURORA WAY	DRAIN (3+61) 32'	SMH #3 20'	
6	7100 TRANQUILITY ROAD	FHV 52'	FH 58'	
7	7104 TRANQUILITY ROAD	FHV 113'	SMH #6 121'	
8	7108 TRANQUILITY ROAD	SMH #6 52'	SMH #7 106'	
9	7301 ISABELLA ROAD	SMH #18 39'	SMH #17 56'	
10	7303 ISABELLA ROAD	SMH #18 36'	SMH #19 70'	
11	7305 ISABELLA ROAD	SMH #18 51'	SMH #19 55'	
12	7307 ISABELLA ROAD	SMH #18 61'	SMH #19 46'	
13	7309 ISABELLA ROAD	SMH #18 88'	SMH #19 32'	
14	7313 ISABELLA ROAD	SMH #19 41'	SMH #20 87'	
15	7315 ISABELLA ROAD	SMH #19 57'	SMH #20 66'	
16	7317 ISABELLA ROAD	FH 73'	FHV 72'	
17	7319 ISABELLA ROAD	FH 61'	FHV 62'	
18	7321 ISABELLA ROAD	FH 34'	FHV 36'	
19	7323 ISABELLA ROAD	FH 22'	FHV 26'	
20	7327 ISABELLA ROAD	FH 19'	FHV 24'	
21	7329 ISABELLA ROAD	FH 37'	FHV 42'	
22	7331 ISABELLA ROAD	FH 58'	FHV 62'	
23	7333 ISABELLA ROAD	FH 80'	FHV 82'	
24	7335 ISABELLA ROAD	SMH #21 70'	FHV 87'	
25	7337 ISABELLA ROAD	8" VALVE 79'	SMH #21 59'	
26	7401 DECLAN ROAD	FH 87'	FHV 89'	
27	7405 DECLAN ROAD	FH 23'	FHV 28'	
28	7409 DECLAN ROAD	8" V 21'	SMH #21 36'	
29	7413 DECLAN ROAD	SMH #22 58'	SMH #21 50'	
30	7417 DECLAN ROAD	SMH #22 30'	SMH #21 101'	
31	7332 ISABELLA ROAD	8" VALVE 80'	SMH #21 58'	
32	7330 ISABELLA ROAD	FHV 85'	FH 89'	
33	7328 ISABELLA ROAD	FHV 66'	FH 71'	
34	7326 ISABELLA ROAD	SMH #20 85'	FHV 57'	
35	7324 ISABELLA ROAD	SMH #20 54'	FHV 37'	
36	7320 ISABELLA ROAD	SMH #20 20'	FHV 48'	
37	7318 ISABELLA ROAD	SMH #19 83'	SMH #20 28'	
38	7316 ISABELLA ROAD	SMH #19 61'	SMH #20 46'	
39	7314 ISABELLA ROAD	SMH #19 32'	SMH #20 78'	
40	7312 ISABELLA ROAD	SMH #18 74'	SMH #19 22'	
41	7308 ISABELLA ROAD	SMH #18 53'	SMH #19 26'	
42	7306 ISABELLA ROAD	SMH #18 31'	SMH #19 61'	
43	7304 ISABELLA ROAD	SMH #17 70'	FHV 71'	
44	7302 ISABELLA ROAD	SMH #17 58'	FHV 60'	
45	7300 ISABELLA ROAD	SMH #17 32'	FHV 41'	



OWNER: ESC WELLINGTON, L.C.
5074 DORSEY HALL DRIVE, SUITE 205
ELICOTT CITY, MARYLAND 21042
410-720-3021

DEVELOPER: ESC WELLINGTON, L.C.
5074 DORSEY HALL DRIVE, SUITE 205
ELICOTT CITY, MARYLAND 21042
410-720-3021

Professional Certification: I hereby certify that these documents were prepared or approved by me, and that I am a duly licensed professional engineer under the laws of the State of Maryland, License No. 22390, Expiration Date: 6-30-2023.

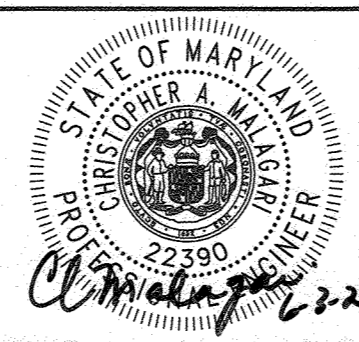
DEPARTMENT OF PUBLIC WORKS
HOWARD COUNTY, MARYLAND

[Signature]
CHIEF, BUREAU OF UTILITIES

DEPARTMENT OF PLANNING AND ZONING
HOWARD COUNTY, MARYLAND

[Signature]
CHIEF, DEVELOPMENT ENGINEERING DIVISION

BENCHMARK
ENGINEERS AND SURVEYORS & PLANNERS
ENGINEERING, INC.
8480 BALTIMORE NATIONAL PIKE A SUITE 315 ELLICOTT CITY, MARYLAND 21043
(P) 410-465-8105 (F) 410-465-6844
WWW.BE-CIVLENGINEERING.COM



DESIGN: LDD
DRAFT: LDD
CHK: DBT
DATE: 6/4/2021

WRA AS BUILT 9/15/22
BEI 1 REVISE SMH RIM ELEVATIONS CORRECT WL STATIONING. LABEL 2 DEG HDC BY SMH 3 0.25.21

PUBLIC WATER AND SEWER PROFILES

600 SCALE MAP: BLOCK:

WELLINGTON FARMS
PHASE 1 SECTION 1
Lots 1 thru 45; Open Space Lots 46 thru 53; Bulk Parcels 'A' and 'B'

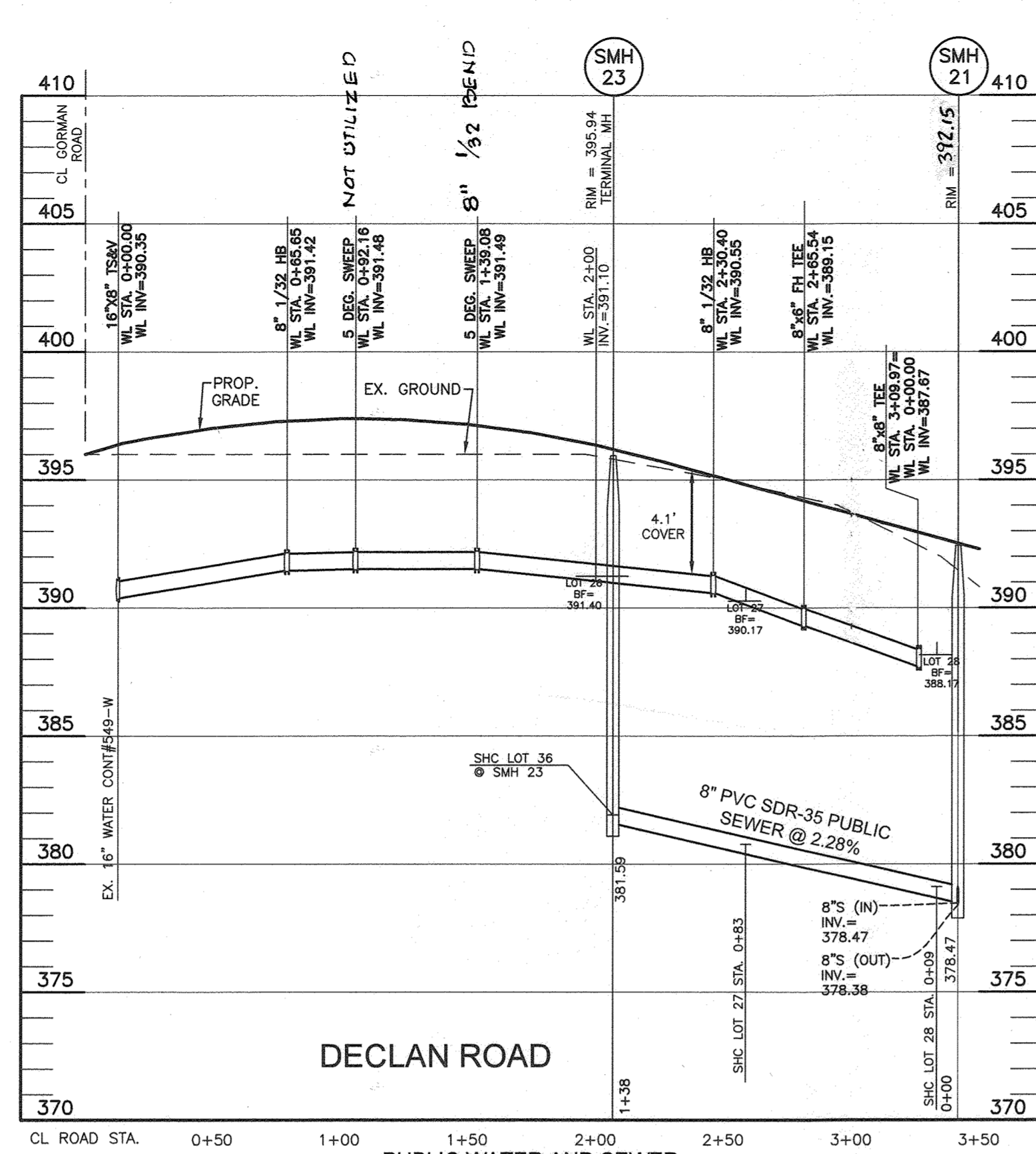
TAX MAP: 46 - GRID: 6 - PARCEL: 163
ZONES: R-20-MG-3 / R-50-MG-3
ELECTION DISTRICT NO. 6 - HOWARD COUNTY, MARYLAND

CONTRACT NO. 24-5135-D

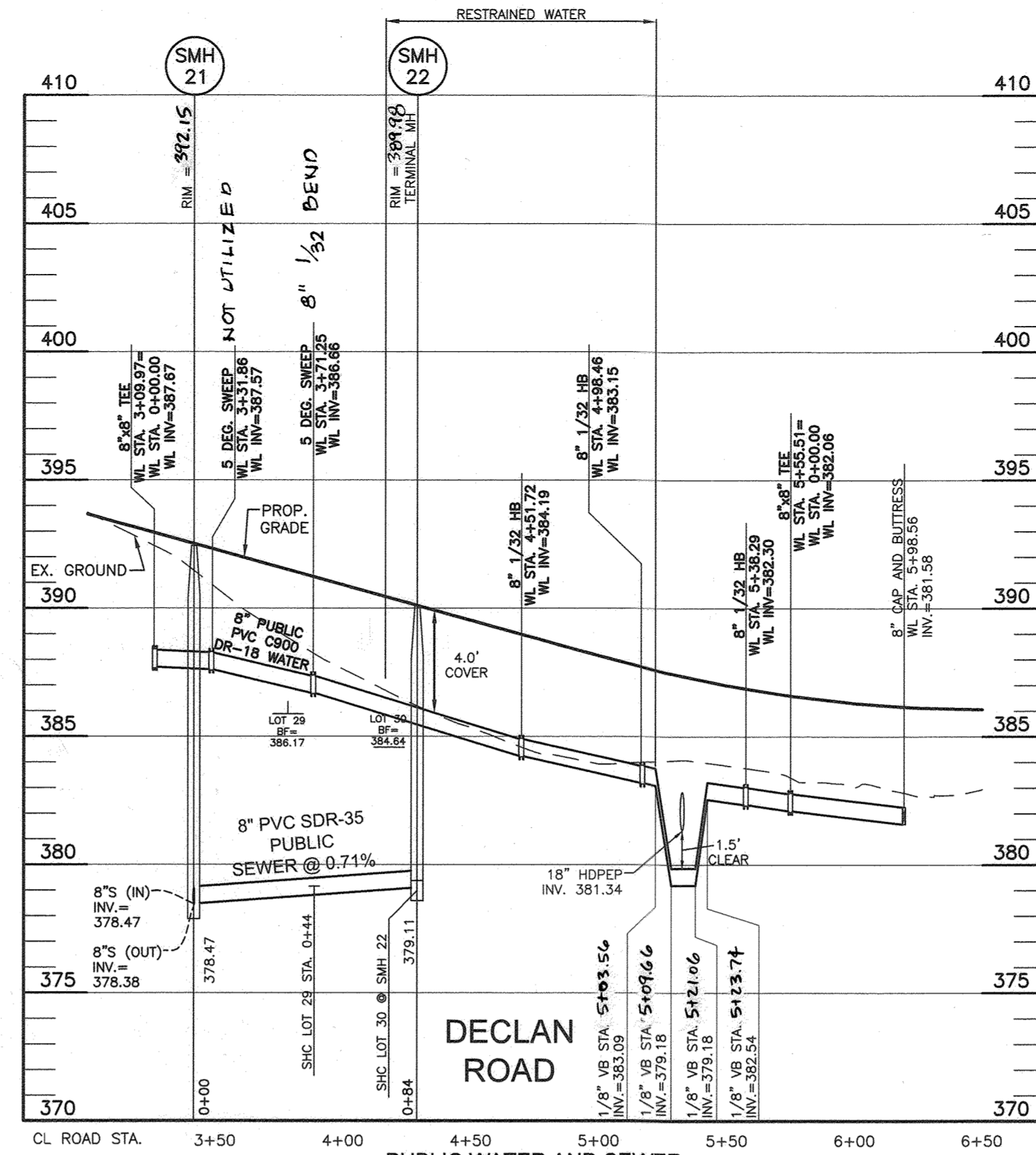
SCALE: AS SHOWN

SHEET NO. 5 OF 6

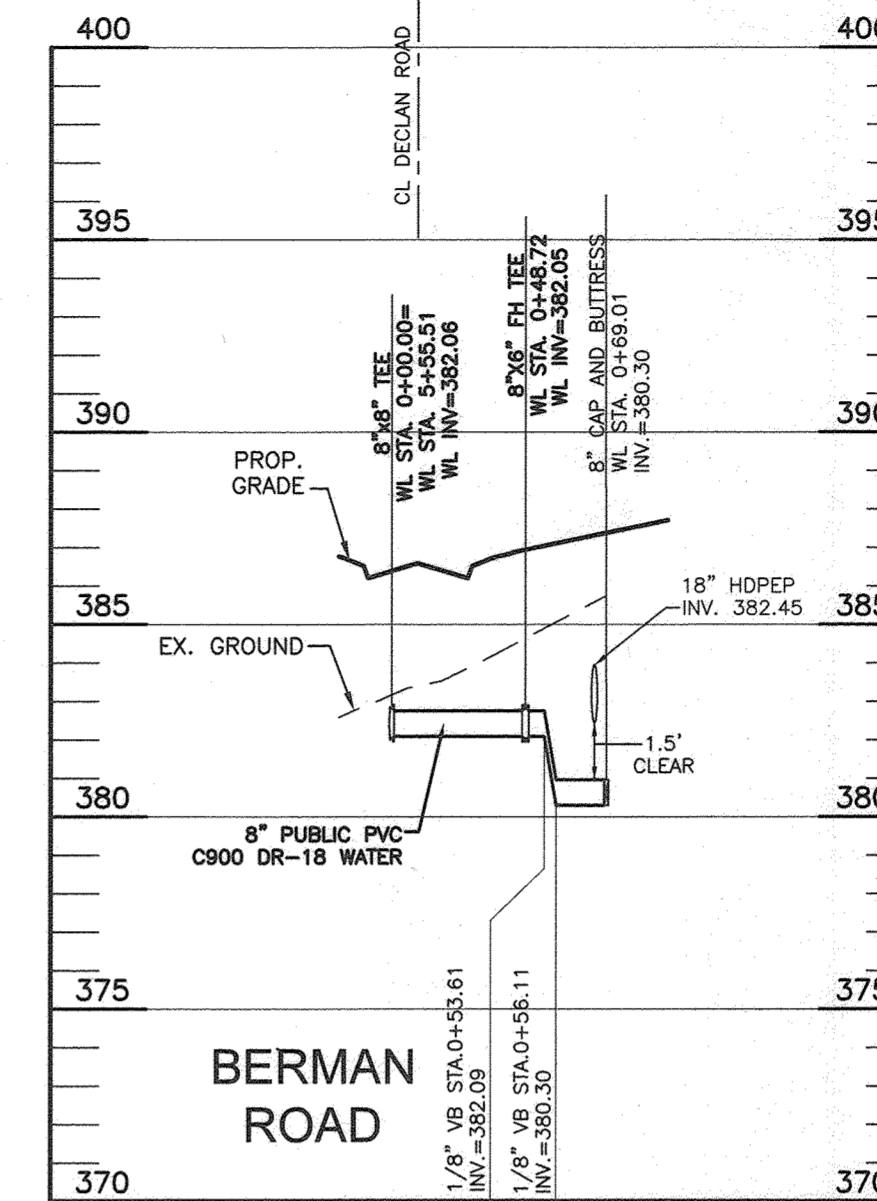
WATER APPURTENANCES SCHEDULE			
APPURTENANCE	WATER LINE STATION	NORTHING	EASTING
END CAP	WL STA. 0+90.71	539098.5776	1349839.2199
5 DEG. SWEEP	WL STA. 0+17.53	539160.1545	1349770.2729
END CAP	WL STA. 0+41.98	539141.2499	1349754.3134
8" 1/2 HB	WL STA. 5+01.03	539178.8906	1349793.8828
8" 1/2 HB	WL STA. 4+83.85	539190.9653	1349805.2431
8" x 6" FH TEE	WL STA. 4+76.95	539196.9342	1349808.7104
5 DEG. SWEEP	WL STA. 4+17.12	539246.6659	1349838.7613
3 DEG. HDC	WL STA. 3+85.45	539277.3322	1349852.2215
5 DEG. SWEEP	WL STA. 3+11.54	539345.7853	1349880.0901
5 DEG. SWEEP	WL STA. 2+13.71	539431.3366	1349927.3726
8" x 6" FH TEE	WL STA. 1+88.33	539451.9648	1349942.1570
8" 1/16 HB	WL STA. 0+13.41	539584.1356	1350044.0526
8" x 6" TEE	WL STA. 3+09.97	539601.2181	1350055.4444
8" 1/2 HB	WL STA. 2+30.40	539667.6882	1350011.7215
5 DEG. SWEEP	WL STA. 1+39.08	539752.3268	1349977.4113
5 DEG. SWEEP	WL STA. 0+52.16	539797.4929	1349964.7025
8" 1/2 HB	WL STA. 0+65.65	539823.5352	1349959.7745
8" x 6" TEE	WL STA. 0+23.84	539885.0510	1349954.8301
8" x 6" FH TEE	WL STA. 1+88.33	539451.9648	1349942.1570
5 DEG. SWEEP	WL STA. 3+31.86	539582.9080	1350067.4431
8" x 6" FH TEE	WL STA. 3+89.15	539638.3375	1350031.0386
5 DEG. SWEEP	WL STA. 4+00.39	539533.0622	1350114.4782
8" 1/2 HB	WL STA. 4+51.52	539499.0740	1350152.6770
8" 1/2 HB	WL STA. 4+98.28	539471.1666	1350190.1697
8" 1/2 HB	WL STA. 5+38.09	539450.2585	1350224.0733
8" x 6" TEE	WL STA. 5+55.32	539441.9648	1350239.1727
8" x 6" FH TEE	WL STA. 0+48.72	539410.9627	1350222.7974
END CAP	WL STA. 0+69.01	539393.0257	1350213.3214
END CAP	WL STA. 5+98.56	538422.8407	1350278.2618



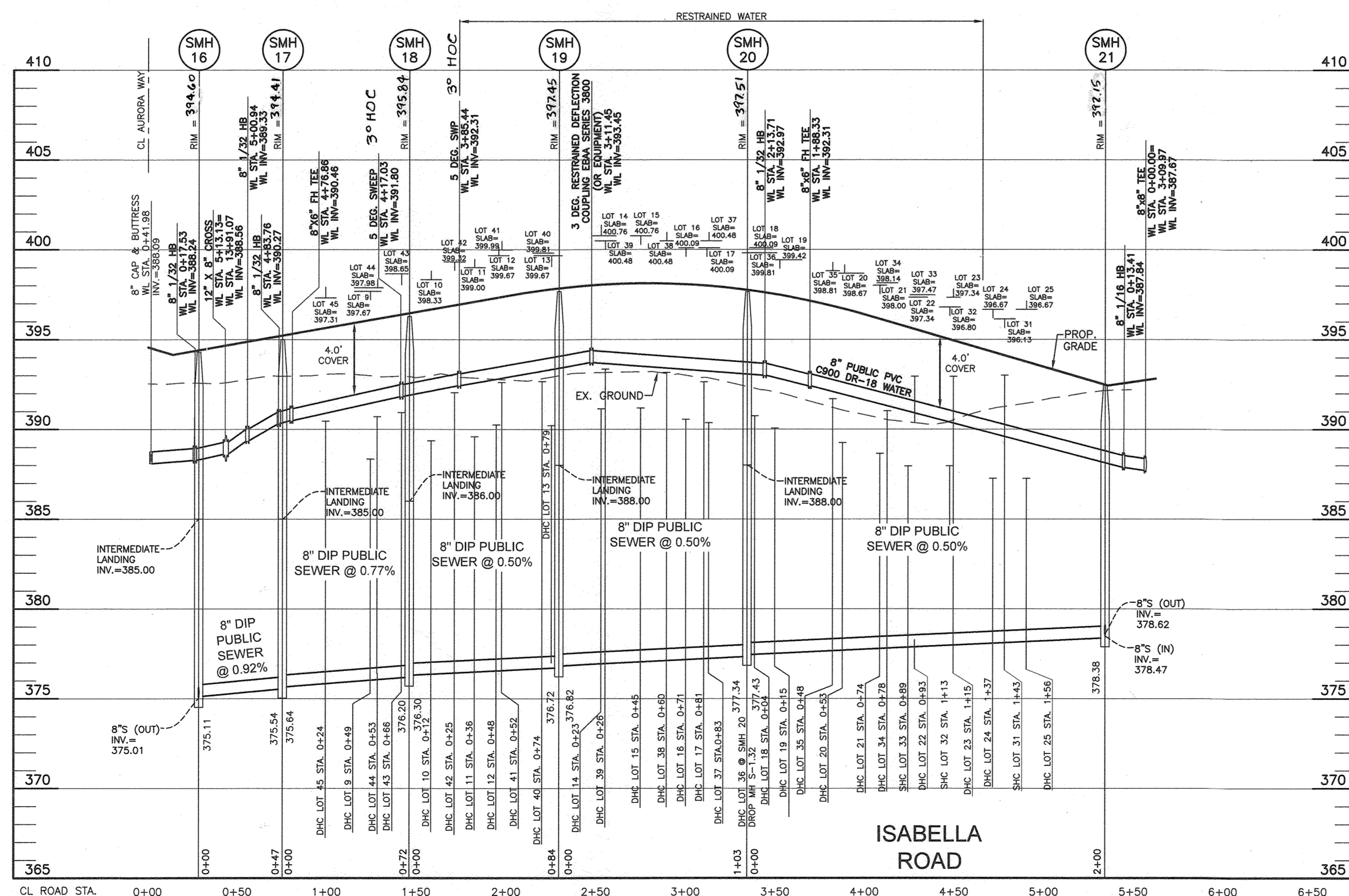
PUBLIC WATER AND SEWER
SCALE: 1"=50' HORIZ., 1"=5' VERT.



PUBLIC WATER AND SEWER
SCALE: 1"=50' HORIZ., 1"=5' VERT.



PUBLIC WATER AND SEWER
SCALE: 1"=50' HORIZ., 1"=5' VERT.



PUBLIC WATER AND SEWER
SCALE: 1"=50' HORIZ., 1"=5' VERT.

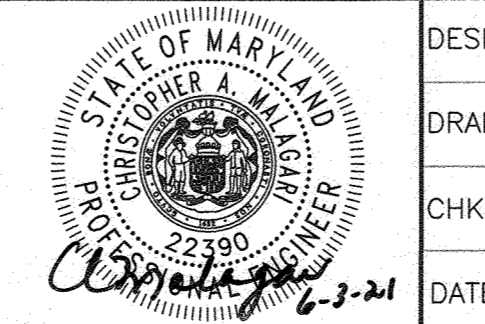
SHC CHART						
Lot Number	Drop House Connection	Invert @ main	DHC standpipe length/height	Invert @ R/W or esmt line	Minimum Cellar Elevation	Basement or Slab Elevation
1		357.98	0.0	358.38	362.88	364.89
2		358.61	0.0	359.01	363.15	364.14
3		359.28	0.0	359.68	363.98	361.92
4		359.80	0.0	360.20	364.70	360.13
5		360.14	0.0	360.54	364.26	354.67
6		359.77	0.0	360.13	364.63	364.67
7		360.12	0.0	360.48	364.98	365.07
8		360.47	0.0	360.83	365.37	365.67
9	YES	376.02	7.7	384.34	388.34	397.67
10	YES	376.53	8.2	385.37	389.37	398.33
11	YES	376.65	8.3	385.59	389.59	399.00
12	YES	376.71	8.9	386.25	390.25	399.67
13	YES	376.87	8.7	386.21	390.21	399.67
14	YES	377.11	9.2	386.99	391.13	400.76
15	YES	377.22	9.2	387.12	391.18	400.76
16	YES	377.35	8.5	386.55	390.55	400.09
17	YES	377.40	8.3	386.38	390.36	400.09
18	YES	377.52	8.5	386.76	390.74	400.09
19	YES	377.68	7.8	386.12	390.06	399.42
20	YES	377.87	6.8	385.31	389.25	396.67
21	YES	377.97	6.1	384.71	388.65	396.00
22	YES	378.07	5.3	384.01	387.95	397.34
23	YES	378.18	5.2	384.02	387.96	397.34
24	YES	378.29	4.4	383.33	387.27	396.67
25	YES	378.38	4.3	383.32	387.26	396.67
26		381.92	0.0	382.64	386.78	391.40
27		380.46	0.0	381.14	385.24	390.17
28		378.84	0.0	379.74	383.88	388.17
29		378.96	0.0	379.72	383.78	386.17
30		379.44	0.0	380.06	384.28	384.64
31		378.32	0.0	378.68	393.01	396.13
32		378.17	0.0	378.53	393.68	396.80
33		378.05	0.0	378.41	393.01	397.47
34	YES	377.99	8.7	387.04	391.02	398.14
35	YES	377.84	9.5	387.71	391.89	398.81
36	YES	377.76	10.5	386.62	392.62	399.81
37	YES	377.41	11.6	385.32	393.36	400.48
38	YES	377.28	11.7	385.20	393.16	400.48
39	YES	377.12	11.9	385.32	393.34	400.48
40	YES	376.84	11.5	385.67	392.67	399.81
41	YES	376.73	11.3	385.39	392.61	399.99
42	YES	376.60	11.0	385.94	392.04	399.32
43	YES	376.14	11.2	387.66	390.93	398.65
44	YES	376.22	10.9	387.47	390.70	397.98
45	YES	375.99	10.0	386.41	390.45	397.31

All SHC's are at a 2.0% unless otherwise noted.
All Drop connections are Ho.Co.Std. S-2.12 Type 'A'

OWNER: ESC WELLINGTON, L.C.
5074 DORSEY HALL DRIVE, SUITE 205
ELLCOTT CITY, MARYLAND 21042
410-720-3021

DEVELOPER: ESC WELLINGTON, L.C.
5074 DORSEY HALL DRIVE, SUITE 205
ELLCOTT CITY, MARYLAND 21042
410-720-3021

BENCHMARK ENGINEERS, INC.
8480 BALTIMORE NATIONAL PIKE SUITE 315 ELLCOTT CITY, MARYLAND 21043
(P) 410-465-6105 (F) 410-465-6644
WWW.BC-CIVLENGINEERING.COM



DESIGN: LDD	
DRAFT: LDD	
CHK: DBT	
DATE: 6/4/2021	
WRA	AS BUILT
BE I	REVISE SMH RIM ELEVATIONS
BY NO.	REVISIONS
DATE	DATE
3/15/22	025-21

FINAL PUBLIC WATER AND SEWER PROFILES

600 SCALE MAP: BLOCK:

WELLINGTON FARMS PHASE 1 SECTION 1
Lots 1 thru 45; Open Space Lots 46 thru 53; Bulk Parcels 'A' and 'B'
TAX MAP: 46 - GRID: 6 - PARCEL: 163
ZONED: R-20-MXD-3 / R-30-MXD-3
ELECTION DISTRICT NO. 6 - HOWARD COUNTY, MARYLAND
CONTRACT NO. 24-5135-D

SCALE: AS SHOWN

SHEET NO. 6 OF 6