

GENERAL NOTES

- PART I**
- APPROXIMATE LOCATIONS OF EXISTING MAINS ARE SHOWN. THE CONTRACTOR SHALL TAKE ALL NECESSARY PRECAUTIONS TO PROTECT EXISTING MAINS AND SERVICES AND MAINTAIN UNINTERRUPTED SERVICE. ANY DAMAGE INCURRED SHALL BE REPAIRED IMMEDIATELY TO THE SATISFACTION OF THE ENGINEER AT THE CONTRACTOR'S EXPENSE.
 - TOPOGRAPHY FIELD SURVEYS WERE PERFORMED ON MARCH 1998 BY POTOMAC AERIAL SURVEYS.
 - HORIZONTAL AND VERTICAL SURVEY CONTROLS:
THE COORDINATES SHOWN ON THE DRAWINGS ARE BASED ON MARYLAND STATE REFERENCE SYSTEM NAD '83/'91 AS PROJECTED BY HOWARD COUNTY GEODETIC CONTROL STATIONS 43B2 AND 43B6.
ALL VERTICAL CONTROLS ARE BASED ON NAVD '88. VERTICAL CONTROLS PROVIDED ON DRAWINGS ARE:
GEODETIC SURVEY CONTROL 43B2 (N 551,654.993/E 1,378,176.951)
BRASS DISC SET ON TOP OF A CONCRETE MONUMENT.
GEODETIC SURVEY CONTROL 43B6 (N 550,601.597/E 1,376,866.072)
BRASS DISC SET ON TOP OF A CONCRETE MONUMENT.
 - ALL PIPE ELEVATIONS SHOWN ARE INVERT ELEVATIONS UNLESS OTHERWISE NOTED.
 - CLEAR ALL UTILITIES BY A MINIMUM OF 12 INCHES. CLEAR ALL POLES BY 5'-0" MINIMUM OR TUNNEL AS REQUIRED UNLESS OTHERWISE NOTED. THE OWNER HAS CONTACTED THE UTILITY COMPANIES AND HAS MADE ARRANGEMENTS FOR BRACING OF POLES AS SHOWN ON DRAWINGS. IN THE EVENT THE CONTRACTOR'S WORK REQUIRES THE BRACING OF ADDITIONAL POLES, ANY COST INCURRED BY THE OWNER FOR BRACING OF ADDITIONAL POLES OR DAMAGES SHALL BE DEDUCTED FROM MONIES OWED THE CONTRACTOR. THE CONTRACTOR SHALL COORDINATE WITH THE UTILITY COMPANIES TO SCHEDULE THE BRACING OF THE POLES.
 - FOR DETAILS NOT SHOWN ON THE DRAWINGS, AND FOR MATERIALS AND CONSTRUCTION METHODS USE, HOWARD COUNTY DESIGN MANUAL, VOLUME IV, STANDARD SPECIFICATIONS AND DETAILS FOR CONSTRUCTION (LATEST EDITION), THE CONTRACTOR SHALL HAVE A COPY OF VOLUME IV ON THE JOB.
 - WHERE TEST PITS HAVE BEEN MADE ON EXISTING UTILITIES, THEY ARE NOTED BY THE SYMBOL AT THE LOCATIONS OF THE TEST PITS. A NOTE OR NOTES CONTAINING THE RESULTS OF THE TEST PIT OR PITS IS INCLUDED ON THE DRAWINGS. EXISTING UTILITIES IN THE VICINITY OF THE PROPOSED WORK FOR WHICH TEST PITS HAVE NOT BEEN DUG SHALL BE LOCATED BY THE CONTRACTOR TWO WEEKS IN ADVANCE OF CONSTRUCTION OPERATION AT HIS OWN EXPENSE.
 - THE CONTRACTOR SHALL NOTIFY THE FOLLOWING UTILITY COMPANIES OR AGENCIES AT LEAST FIVE WORKING DAYS BEFORE STARTING WORK SHOWN ON THESE PLANS:

AT&T	1-800-252-1133
BGE (CONSTRUCTION SERVICES)	410-637-8713
BGE (EMERGENCY)	410-685-0123
BUREAU OF UTILITIES	410-313-4900
COLONIAL PIPELINE CO	410-795-1390
MISSS UTILITY	1-800-257-7777
STATE HIGHWAY ADMINISTRATION	410-531-5533
VERIZON	1-800-743-0033
 - TREES AND SHRUBS ARE TO BE PROTECTED FROM DAMAGE TO THE MAXIMUM EXTENT. TREES AND SHRUBS LOCATED WITHIN THE CONSTRUCTION STRIP ARE NOT TO BE REMOVED OR DAMAGED BY THE CONTRACTOR.
 - THE CONTRACTOR SHALL REMOVE TREES, STUMPS AND ROOTS ALONG THE LINE OF EXCAVATION. PAYMENT FOR SUCH REMOVAL SHALL BE INCLUDED IN THE UNIT PRICE BID FOR THE CONSTRUCTION OF THE MAIN.
 - THE CONTRACTOR SHALL NOTIFY THE BUREAU OF HIGHWAYS, HOWARD COUNTY, AT (410) 313-7450 AT LEAST FIVE WORKING DAYS BEFORE OPEN CUTTING OR BORING/JACKING OF ANY COUNTY ROAD FOR LAYING WATER/SEWER MAINS OR HOUSE CONNECTIONS. THE APPROVAL OF THESE DRAWINGS WILL CONSTITUTE COMPLIANCE WITH DPW REQUIREMENTS PER SECTION 18.114(a) OF THE HOWARD COUNTY CODE.

- PART II - WATER**
- ALL WATER MAINS SHALL BE C-900 PVC (DR-18) UNLESS OTHERWISE NOTED.
 - TOPS OF ALL WATER MAINS SHALL HAVE A MINIMUM OF 3'-6" OF COVER UNLESS OTHERWISE NOTED.
 - VALVES ADJACENT TO TEES SHALL BE STRAPPED TO TEES.
 - ALL FITTINGS SHALL BE BUTTRESSED OR ANCHORED WITH CONCRETE IN ACCORDANCE WITH STANDARD DETAILS UNLESS OTHERWISE PROVIDED FOR ON THE DRAWINGS.
 - FIRE HYDRANTS SHALL BE SET TO THE BURY LINE ELEVATIONS SHOWN ON THE DRAWINGS. ALL FIRE HYDRANTS SHALL BE INSTALLED IN ACCORDANCE WITH STANDARD DETAILS. THE SOIL AROUND THE FIRE HYDRANT SHALL BE COMPACTED IN ACCORDANCE WITH SECTION 1008 AND SECTION 1005 OF THE STANDARD SPECIFICATIONS.
 - THE CONTRACTOR SHALL NOT OPERATE ANY WATER MAIN VALVES ON THE EXISTING WATER SYSTEM.
 - TRACER WIRE AND CONTINUITY TEST STATIONS SHALL BE INSTALLED ON ALL DIP AND PVC WATER MAINS IN ACCORDANCE WITH THE HOWARD COUNTY DESIGN MANUAL.
 - FOR PVC WATER MAINS, ALL RECORDS FOR THE QUALITY CONTROL AND QUALIFICATION TEST REQUIREMENTS NOTED IN SECTION 5.1 OF THE AWWA STANDARD C900 FOR PVC PRESSURE PIPE SHALL BE SUBMITTED WITH THE PIPE MATERIAL CERTIFICATIONS OR SHOP DRAWINGS PRIOR TO APPROVAL OF THE MATERIAL FOR USE. THE TEST RECORDS SHALL BE FOR THE PIPE TO BE INSTALLED UNDER THIS CONTRACT. ALL PVC PIPE SHALL CONTAIN MARKINGS TO ALLOW CROSS REFERENCING OF THE PIPE SUPPLIED TO THE REST RECORDS RECEIVED.
 - UNLESS OTHERWISE NOTED ON THE PLANS OR IN THE SPECIFICATIONS, SACRIFICIAL ANODES SHALL BE INSTALLED ON ALL VALVES AND METALLIC FITTINGS USED WITH PVC WATER MAINS IN ACCORDANCE WITH VOLUME IV, STANDARD SPECIFICATIONS AND DETAILS FOR CONSTRUCTION. SEVENTEEN (17) POUND MAGNESIUM ANODES SHALL BE INSTALLED ON ALL VALVES AND DUCTILE IRON FITTINGS INCLUDING RESTRAINTS AND HARNESSSES. TWELVE (12) POUND ZINC ANODES SHALL BE INSTALLED ON ALL STAINLESS STEEL FITTINGS AND SADDLES USED WITH PVC MAINS. ALL "TEES" USED WITH PVC MAINS SHALL BE DUCTILE IRON.
 - PROPER ASSEMBLY OF GASKETED PVC PIPE JOINTS: THE MANUFACTURER'S INSERTION LINE OF GASKETED PVC PIPE JOINTS INDICATES THE MAXIMUM DEPTH OF INSERTION OF THE SPIGOT INTO THE BELL. AFTER ASSEMBLY OF THE JOINT, THE INSERTION LINE SHALL REMAIN VISIBLE. DUAL INSERTION LINES ON GASKETED PVC PIPE INDICATE THE MAXIMUM AND MINIMUM DEPTH OF INSERTION OF THE SPIGOT INTO THE BELL. THE CONTRACTOR SHALL NOT OVER INSERT OR OVER HOME THE SPIGOT INTO THE BELL OF PVC PIPE.
 - ALL CHANGES IN HORIZONTAL OR VERTICAL DIRECTION OF PVC WATER PIPE SHALL BE MADE WITH STANDARD BENDS, 5-DEGREE SWEEPS OR HIGH DEFLECTION (HD) COUPLINGS. NO BENDING OF THE PIPE OR DEFLECTING OF PVC PIPE JOINTS IS PERMITTED. WHERE HIGH DEFLECTION COUPLINGS OR 5-DEGREE SWEEPS ARE PERMITTED, THE CONTRACTOR SHALL PROVIDE ONE FULL PIPE LENGTH (20-FOOT LONG) ON EITHER SIDE OF THE HIGH DEFLECTION COUPLING OR 5-DEGREE SWEEP. THE CONTRACTOR SHALL USE A VIBRATORY PLATE COMPACTOR OR OTHER APPROVED MEANS TO THOROUGHLY COMPACT THE #57 STONE ON BOTH SIDES OF THE HIGH DEFLECTION COUPLING OR 5-DEGREE SWEEP, TAKING CARE NOT TO USE COMPACTOR EQUIPMENT DIRECTLY OVER THE FITTING.

- PVC HIGH DEFLECTION COUPLINGS SHALL BE LIMITED TO A TOTAL DEFLECTION OF 3-DEGREES 1-1/2- DEGREE ON EITHER END OF THE COUPLING), SHALL BE RATED FOR A MINIMUM 200 PSI MEETING THE REQUIREMENTS OF AWWA C900, SHALL HAVE A MINIMUM LA LENGTH OF 9-INCHES AND SHALL HAVE CENTER STOPS. PVC HIGH DEFLECTION COUPLINGS SHALL BE CERTAINTED PVC HIGH DEFLECTION (HD) STOP COUPLINGS OR EQUAL.
- FIVE DEGREE SWEEPS SHALL BE BELL BY SPIGOT, RATED FOR A MINIMUM 225 PSI, DR18 MEETING THE REQUIREMENTS OF AWWA C900 AND SHALL BE MULTI FITTINGS (PEX) BLUE BRUTE DR18 OR EQUAL.
- WHEN PVC HIGH DEFLECTION COUPLINGS OR PVC 5-DEGREE SWEEPS ARE USED TO FACILITATE CHANGES IN HORIZONTAL OR VERTICAL ALIGNMENTS OF AWWA C-900 PVC PIPELINES, THE CONTRACTOR SHALL INSTALL DEVICES FOR THE PREVENTION OF OVER-INSERTION OF THE PVC PIPE SPIGOTS OR PLAIN ENDS INTO THE PUSH ON BELL JOINT ON BOTH SIDES OF THE HIGH DEFLECTION COUPLINGS AND 5 DEGREE SWEEPS. BELL STOPS SHALL BE PLACED AT THE PROPER INSERTION LINE FOR THE FITTING. THE BELL STOP SHALL BE MANUFACTURED OF DUCTILE IRON AND INCORPORATE AN EXPANSION RETENTION SPRING TO ALLOW FOR PIPE EXPANSION AND CONTRACTION. THE BELL STOPS SHALL BE SERIES 5000 MEGA-STOP, AS MANUFACTURED BY EBAA IRON INC. OR APPROVED EQUAL.

- PART III - SEWER**
- ALL SEWER MAINS SHALL BE D.I.P. OR P.V.C UNLESS OTHERWISE NOTED.
 - ALL MANHOLES SHALL BE 4'-0" INSIDE DIAMETER UNLESS OTHERWISE NOTED.
 - FORCE MAINS SHALL BE D.I.P. ONLY.
 - MANHOLES SHOWN WITH 12" AND 16" WALLS ARE FOR BRICK MANHOLES ONLY.
 - MANHOLES DESIGNATED W.T. IN PLAN AND PROFILE SHALL HAVE WATERIGHT FRAME AND COVERS, STANDARD DETAIL GS.52. WHERE WATERIGHT FRAME AND COVER IS USED, SET TOP OF FRAME 1'-6" ABOVE FINISHED GRADE UNLESS OTHERWISE NOTED ON THE DRAWINGS.
 - HOUSE(S) WITH THE SYMBOL "C.N.S." INDICATES THAT CELLAR CANNOT BE SERVED.

THIS DEVELOPMENT IS APPROVED FOR SOIL EROSION AND SEDIMENT CONTROL BY THE HOWARD SOIL CONSERVATION DISTRICT.

J.R. Redman 10/23/15
SOIL CONSERVATION DISTRICT DATE

SEDIMENT CONTROL MEASURES WILL BE IMPLEMENTED IN ACCORDANCE WITH SECTION 308 OF THE SPECIFICATIONS AND WITH SITE DEVELOPMENT PLAN F-18-082 AND SDP-18-022.

FINAL WATER AND SEWER CONSTRUCTION PLAN

BLUE STREAM DRIVE EXTENSION

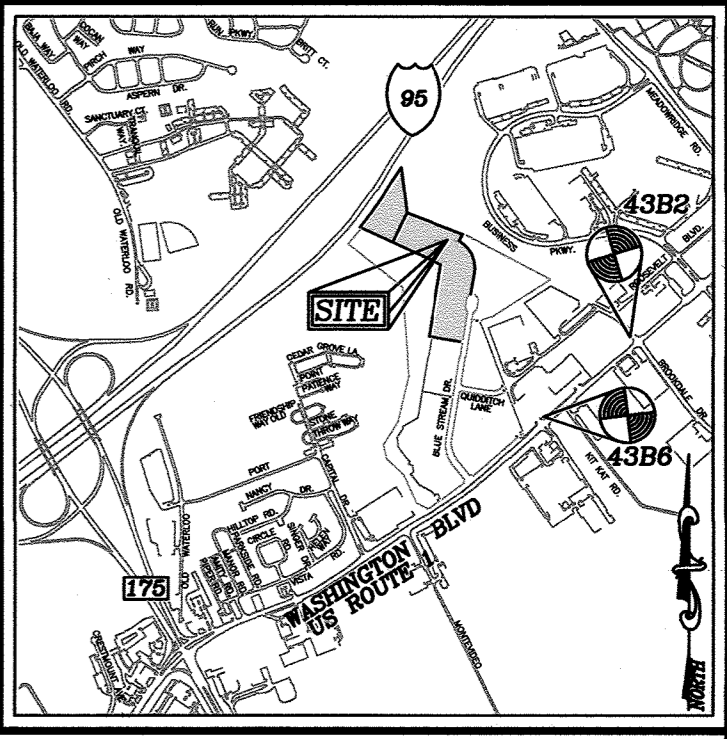
A RESUBDIVISION OF PARCELS L-3 & M

CONTRACT 14-5067-D

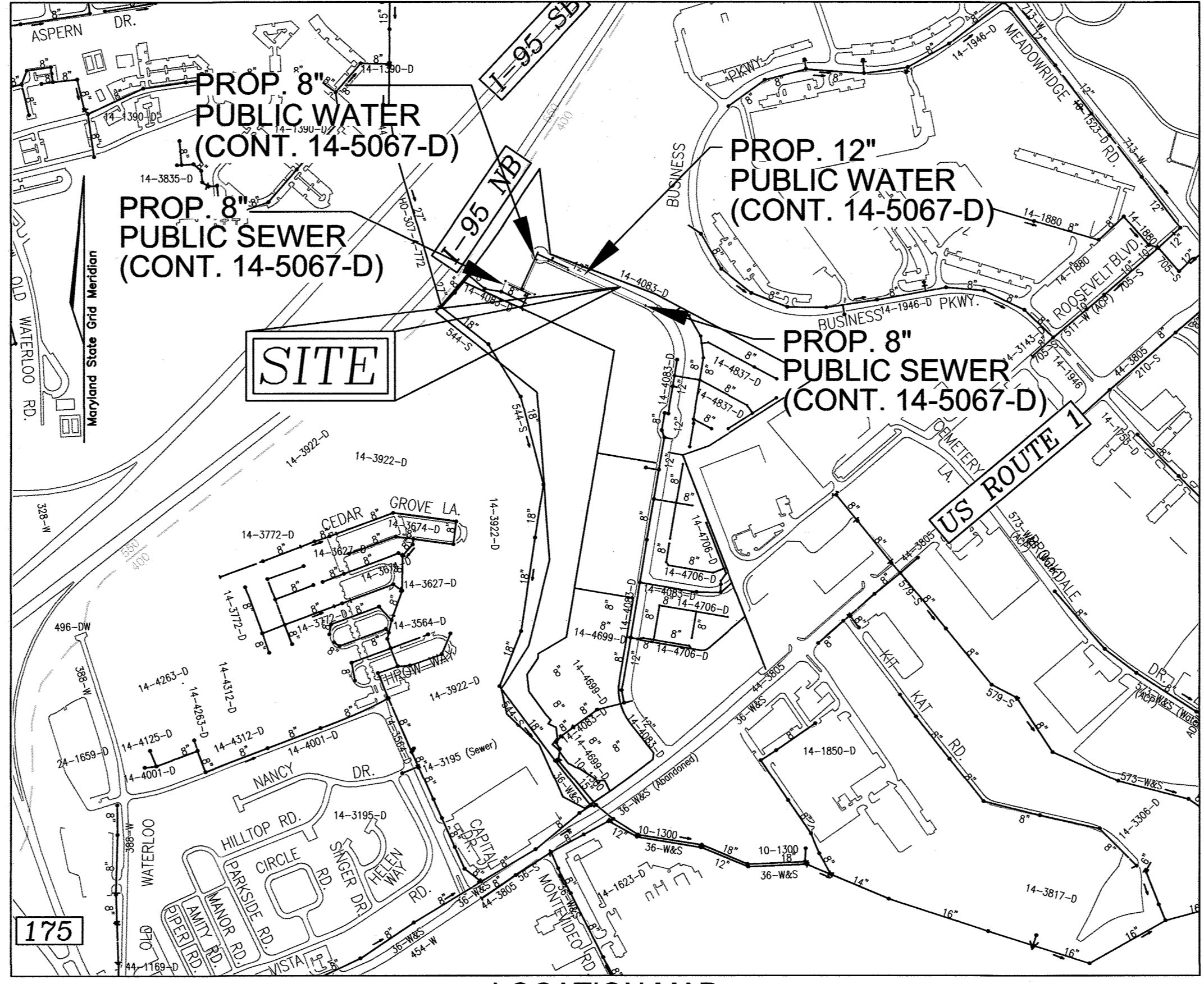
HOWARD COUNTY, MARYLAND

BENCHMARKS

HOWARD COUNTY BENCHMARK 43B2
N 551,654.993 E 1,378,176.951 ELEV.: 209.601'
HOWARD COUNTY BENCHMARK 43B6
N 550,601.597 E 1,376,866.072 ELEV.: 210.559'



VICINITY MAP
SCALE: 1"=2000'
ADC MAP COORDINATES: PAGE 34 / GRID E6



LOCATION MAP
SCALE: 1"=600'

WATER ZONE:	400
TEST GRADIENT:	677
TEST PRESSURE:	205

GENERAL NOTES:

- PART IV - DESIGN MANUAL WAIVER APPROVALS**
- THIS PLAN IS SUBJECT TO A DESIGN MANUAL WAIVER (DMW) 2-18-019 TO DESIGN MANUAL VOLUME II, APPROVED 10/11/14, TO SECTION 5.4.B.5 WHICH REQUIRES A MINIMUM 10' HORIZONTAL CLEARANCE BETWEEN ANY PERMANENT STRUCTURE AND THE EDGE OF A PUBLIC UTILITY EASEMENT.
IMPACTS INCLUDE:
A. STORM DRAIN STRUCTURES:
1-27 AND 1-46 SHOWN ON SDP-18-022.
B. UNITS:
104, 134, 136, 138, 140, 142, 144, 146, 148, 149, 151, 153, 154, 156 AND 158 SHOWN ON SDP-18-022.

TYPE OF BUILDING :	RESIDENTIAL
NO. OF APARTMENT BUILDING :	-
NO. OF TOWNHOUSE BUILDING :	38
NO. OF SINGLE SEWER HOUSE CONNECTIONS :	38
NO. OF TWIN SEWER HOUSE CONNECTIONS :	0
NO. OF SINGLE WATER HOUSE CONNECTIONS :	10
NO. OF TWIN WATER HOUSE CONNECTIONS :	14
SEWER SHED :	PATAPSCO
TREATMENT PLANT :	PATAPSCO RIVER

LEGEND

EXISTING TREELINE	
PROPOSED TREELINE	
EXISTING WATER MAIN	
PROPOSED WATER MAIN	
FIRE HYDRANT	
PROPOSED VALVE	
PROPOSED TEE	
PROPOSED STORM DRAIN	
PROPOSED SEWER MAIN	
EXISTING STORM DRAIN	
EXISTING SEWER	
SEWER MANHOLE	
PRIVATE WATER HOUSE CONNECTION	
PRIVATE SEWER	
PROPOSED SIGN	
PROPOSED LIGHT	

QUANTITIES

ITEMS	QUANTITIES ESTIMATED	AS-BUILT		
		QUANTITIES	TYPE	MANUFACTURER/SUPPLIER
WATER				
12" WATER C-900 PVC	198 LF	200	C-900	NATIONAL PIPE AND PLASTICS
8" WATER C-900 PVC	435 LF	440	C-900	NATIONAL PIPE AND PLASTICS
6" WATER C-900 PVC	33 LF	95	C-900	NATIONAL PIPE AND PLASTICS
8" X 8" TEE	1 EA	1	C-153	TYLER/UNION
12" X 6" TEE	5 EA	5	C-153	TYLER/UNION
8" X 6" TEE	1 EA	4	C-153	TYLER/UNION
FIRE HYDRANT	2 EA	2	A-423	MUELLER COMPANY
12" BLOW-OFF VALVE	1 EA	1	ANSI 372	JOHN C. KUPFERLE FOUNDRY CO.
6" VALVE	4 EA	4	A38112	MUELLER COMPANY
6" VALVE	2 EA	2	A236125	MUELLER COMPANY
8" CAP	2 EA	2	C-153	TYLER/UNION
8" - 1/8" H. BEND	3 EA	3	C-153	TYLER/UNION
1-1/2" W.H.C	719 LF	767	TYPE-K	MUELLER COMPANY
1" OUTSIDE METER VAULT	24 EA	24	-	HORNE CONCRETE
4" WATER METER VALVE	1 EA	1	C-153	TYLER/UNION
12" X 24" FORCE MAIN	1 EA	1	C-153	TYLER/UNION
STANDARD MANHOLE	8 EA	8	-	CONTRACTORS PRECAST
8" PVC SEWER	1,091 LF	1,092	-	NATIONAL PIPE AND PLASTICS
4" SMC	1,009 LF	1,020	-	NATIONAL PIPE AND PLASTICS
SEWER CLEANOUT	38 EA	38	-	HORNE CONCRETE

PUBLIC UTILITY NOTE:
THE COUNTY SHALL BEAR ABSOLUTELY NO RESPONSIBILITY FOR THE RECONSTRUCTION, REPAIR OR REMEDIAL MAINTENANCE REQUIRED DUE TO ANY DAMAGE TO PRIVATE UTILITIES INCLUDING, BUT NOT LIMITED TO STORM DRAINS, STORM DRAIN STRUCTURES, (EG. INLETS AND MANHOLES), AND OTHER PRIVATE SYSTEMS OR FEATURES RESULTING FROM OR INCURRED DURING MAINTENANCE AND/OR REPAIR OF THE PUBLIC WATER, SEWER OR UTILITIES. ANY COST INCURRED BY THE COUNTY THAT IS ASSOCIATED WITH RECONSTRUCTION OF PRIVATE UTILITIES AND STRUCTURES FOLLOWING MAINTENANCE OF THE PUBLIC UTILITIES, BY THE COUNTY, SHALL BE THE RESPONSIBILITY OF THE OWNER OR ITS SUCCESSORS OR ASSIGNS. THE AFOREMENTIONED INCLUDES PRIVATE UTILITIES AND OR STRUCTURE PERMITTED WITHIN THE EASEMENTS OR WITHIN THE 10-FOOT EASEMENT SETBACK VIA APPROVED WAIVER FROM THE DEPARTMENT OF PUBLIC WORKS.

OWNER/DEVELOPER
BLUE STREAM 3, LLC
PO BOX 416
ELLCOTT CITY, MD 21041
C/O: ARNOLD SAGNER
410-465-2020

DEPARTMENT OF PUBLIC WORKS
HOWARD COUNTY, MARYLAND
[Signature]
CHIEF, BUREAU OF UTILITIES
10/15/15

DEPARTMENT OF PLANNING & ZONING
HOWARD COUNTY, MARYLAND
[Signature]
CHIEF, DEVELOPMENT ENGINEERING DIVISION
11-21-15

ROBERT H. VOGEL ENGINEERING, INC.
ENGINEERS • SURVEYORS • PLANNERS
3300 N. RIDGE ROAD, SUITE 110 TEL: 410.461.7666
ELLCOTT CITY, MD 21043 FAX: 410.461.8961



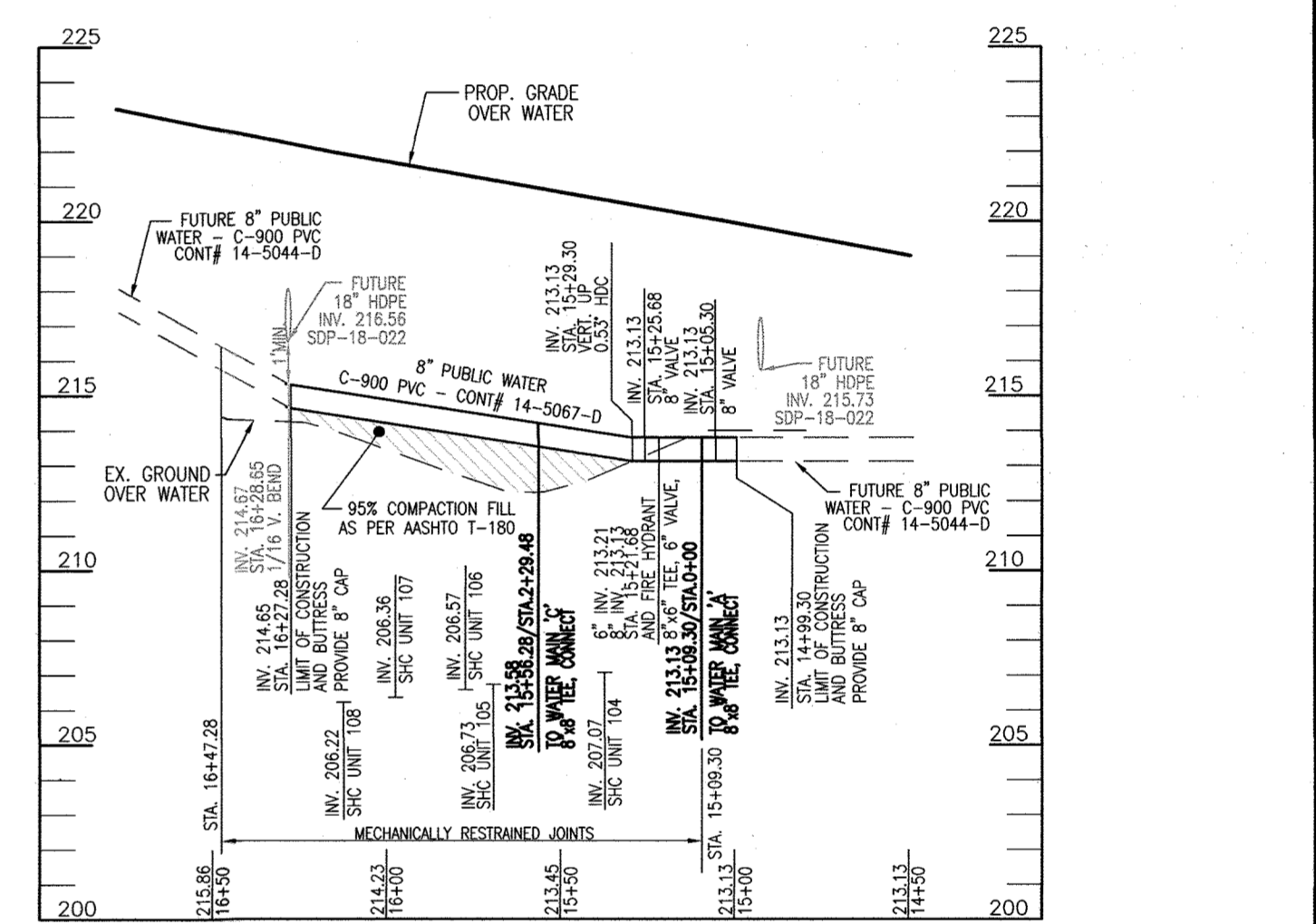
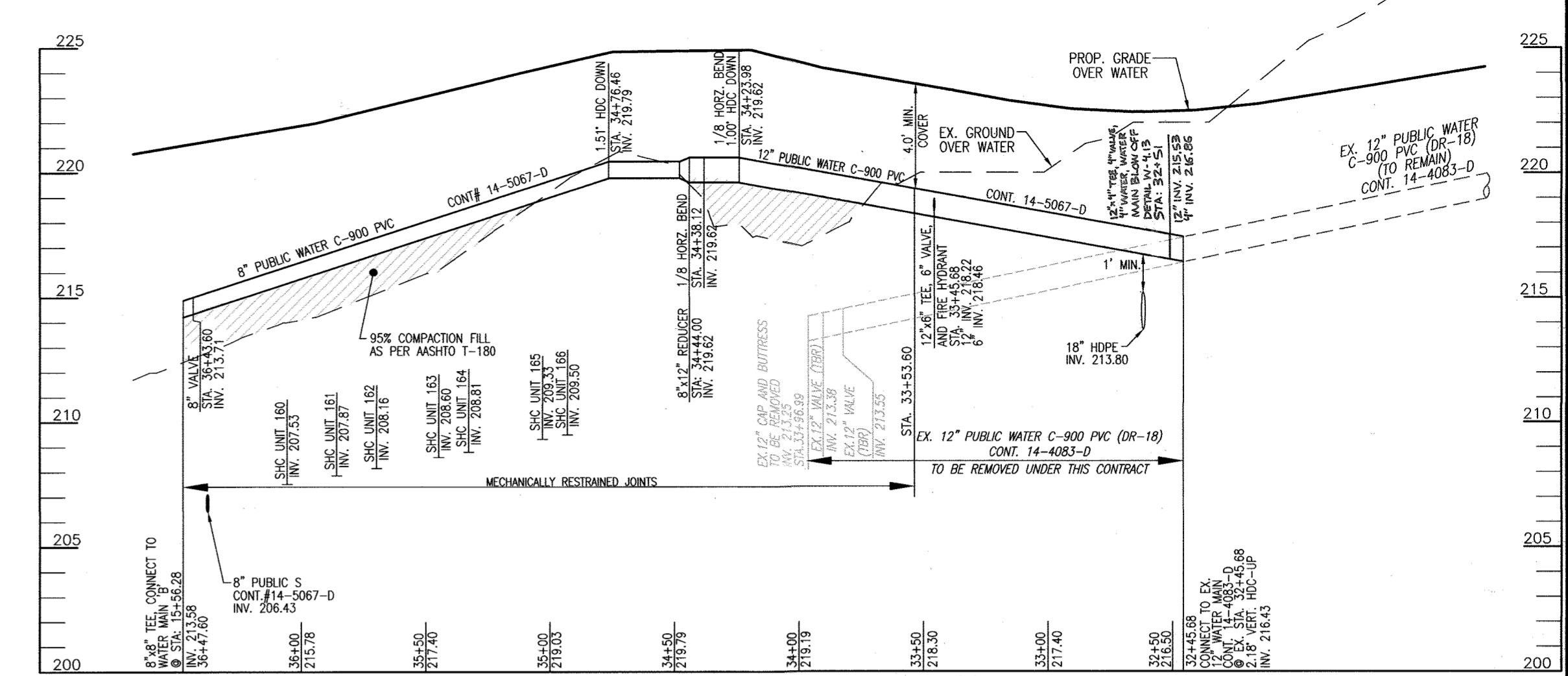
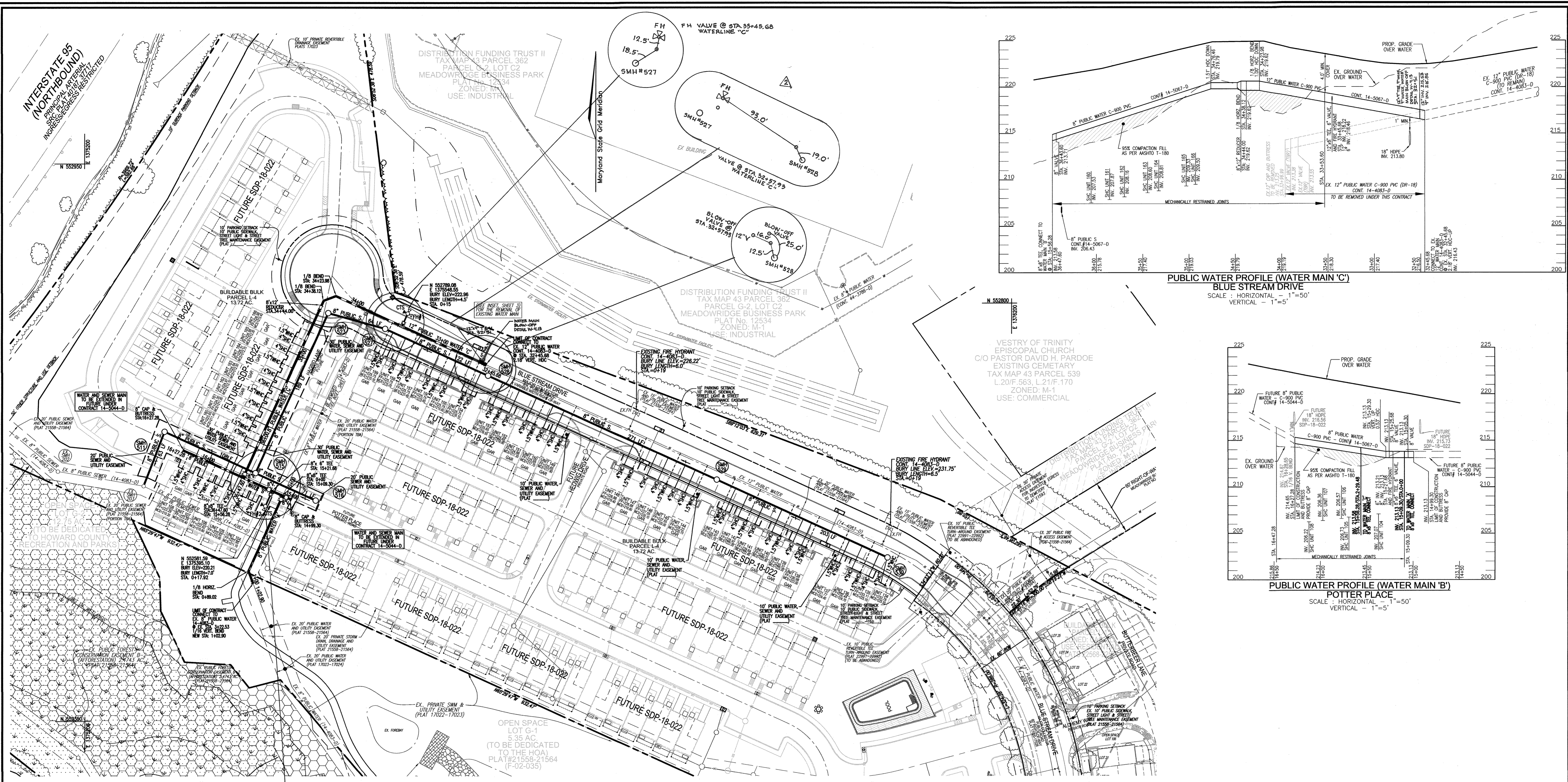
PROFESSIONAL CERTIFICATE	DRN: KG	DES: DZE	WRA:	AS BUILT QUANTIFIED TABLE	9/7/21
I HEREBY CERTIFY THAT THESE DOCUMENTS WERE PREPARED OR APPROVED BY ME, AND THAT I AM A DULY LICENSED PROFESSIONAL ENGINEER UNDER THE LAWS OF THE STATE OF MARYLAND, LICENSE NO. 16193, EXPIRATION DATE: 09-27-2020	CHK: RRV		VTG:	REVISE TO RELOCATE WATER MAIN BLOW-OFF	5-27-21
	DATE: AUGUST 2018		BY NO.	REVISION	DATE

FINAL WATER AND SEWER CONSTRUCTION PLAN
CONTRACT 14-5067-D
COVER SHEET

BLUE STREAM DRIVE EXTENSION
A RESUBDIVISION OF PARCELS L-3 & M
ZONED: CAC-CL1

TAX MAP 43 GRID 4
1ST ELECTION DISTRICT
PARCEL 14
HOWARD COUNTY, MARYLAND

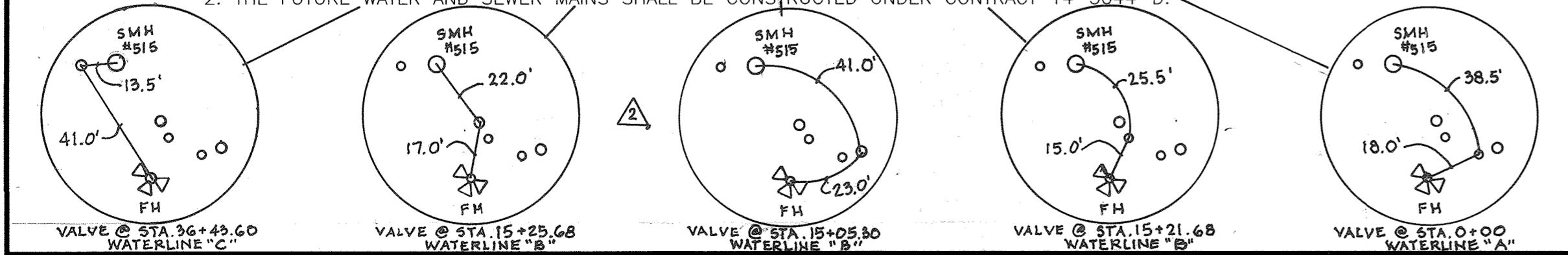
SCALE AS SHOWN
SHEET 1 OF 3



LAYOUT PLAN
SCALE: 1"=50'

WATER MAIN 'A'		WATER MAIN 'C'	
WL STA.	APPURTENANCE	WL STA.	APPURTENANCE
WL STA. 0+00.00	8"x8" TEE, CONNECT TO WATER MAIN 'B'	WL STA. 32+45.68	CONNECT TO EX. 12" PUBLIC WATER (CONTRACT 14-4083-D) EX. 2.1/2" VERT. HDB.
WL STA. 0+04.00	8" VALVE	WL STA. 32+51	12"x4" TEE, 1" WATER MAIN BLOW-OFF
WL STA. 0+68.16	3.19' VERT. HDB.	WL STA. 33+45.68	12"x6" TEE, 6" VALVE, FIRE HYDRANT
WL STA. 0+79.61	1/16 VERT. BEND	WL STA. 34+23.98	1/8 HORIZ. BEND, HDB DOWN
WL STA. 0+89.02	1/8 HORIZ. BEND	WL STA. 34+38.12	1/8 HORIZ. BEND
WL STA. 1+02.90	1/16 VERT. BEND, CONNECT TO EX. 8" PUBLIC WATER	WL STA. 34+44.00	8" x 12" REDUCER
WL STA. 14+99.30	8" CAP AND BUTTRISS	WL STA. 36+43.60	8" VALVE
WL STA. 15+05.30	8" VALVE	WL STA. 36+47.60	8"x8" TEE, CONNECT TO WATER MAIN 'B'
WL STA. 15+09.30	8"x8" TEE, CONNECT TO WATER MAIN 'A'		
WL STA. 15+21.68	8"x6" TEE, 6" VALVE, FIRE HYDRANT		
WL STA. 15+25.68	8" VALVE		
WL STA. 15+29.68	0.53' VERT. HDB (UP)		
WL STA. 15+58.28	8"x8" TEE, CONNECT TO WATER MAIN 'C'		
WL STA. 16+27.28	8" CAP AND BUTTRISS		

NOTES:
 1. SEE SHEET 3 INSET FOR THE REMOVAL OF EXISTING WATER MAIN FROM CONTRACT 14-4083-D.
 2. THE FUTURE WATER AND SEWER MAINS SHALL BE CONSTRUCTED UNDER CONTRACT 14-5044-D.



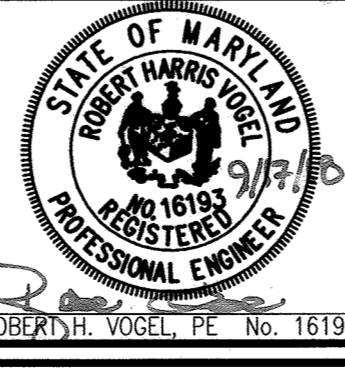
DEPARTMENT OF PUBLIC WORKS
HOWARD COUNTY, MARYLAND

[Signature]
10/15/18
CHIEF, BUREAU OF UTILITIES

DEPARTMENT OF PLANNING & ZONING
HOWARD COUNTY, MARYLAND

[Signature]
11-21-18
CHIEF, DEVELOPMENT ENGINEERING DIVISION

ROBERT H. VOGEL ENGINEERING, INC.
 ENGINEERS • SURVEYORS • PLANNERS
 3300 N. RIDGE ROAD, SUITE 110
 ELLICOTT CITY, MD 21043
 TEL: 410.461.7666
 FAX: 410.461.8961



PROFESSIONAL CERTIFICATE
 I HEREBY CERTIFY THAT THESE DOCUMENTS WERE PREPARED OR APPROVED BY ME, AND THAT I AM A DULY LICENSED PROFESSIONAL ENGINEER UNDER THE LAWS OF THE STATE OF MARYLAND, LICENSE NO. 16193, EXPIRATION DATE: 09-27-2020

DRN:	KG	DES:	DZE	WRA:	ADDED AS BUILT VALVE LOCATIONS	9/17/18
CHK:	RRV	YRS:	1	REVISION:	REVISE TO RELOCATE WATER MAIN BLOW-OFF	5-27-21
DATE:	AUGUST 2018	BY:	NO.	REVISION:		DATE:

FINAL WATER AND SEWER CONSTRUCTION PLAN
 CONTRACT 14-5067-D

600' SCALE MAP NO. 43 BLOCK NO. 4

OWNER/DEVELOPER
 BLUE STREAM 3, LLC
 PO BOX 416
 ELLICOTT CITY, MD 21041
 C/O: ARNOLD SAGNER
 410-465-2020

BLUE STREAM DRIVE EXTENSION
 A RESUBDIVISION OF PARCELS L-3 & M
 ZONED: CAC-CL1

TAX MAP 43 GRID 4
1ST ELECTION DISTRICT

PARCEL 14
HOWARD COUNTY, MARYLAND

SCALE AS SHOWN
 SHEET 2 OF 3

