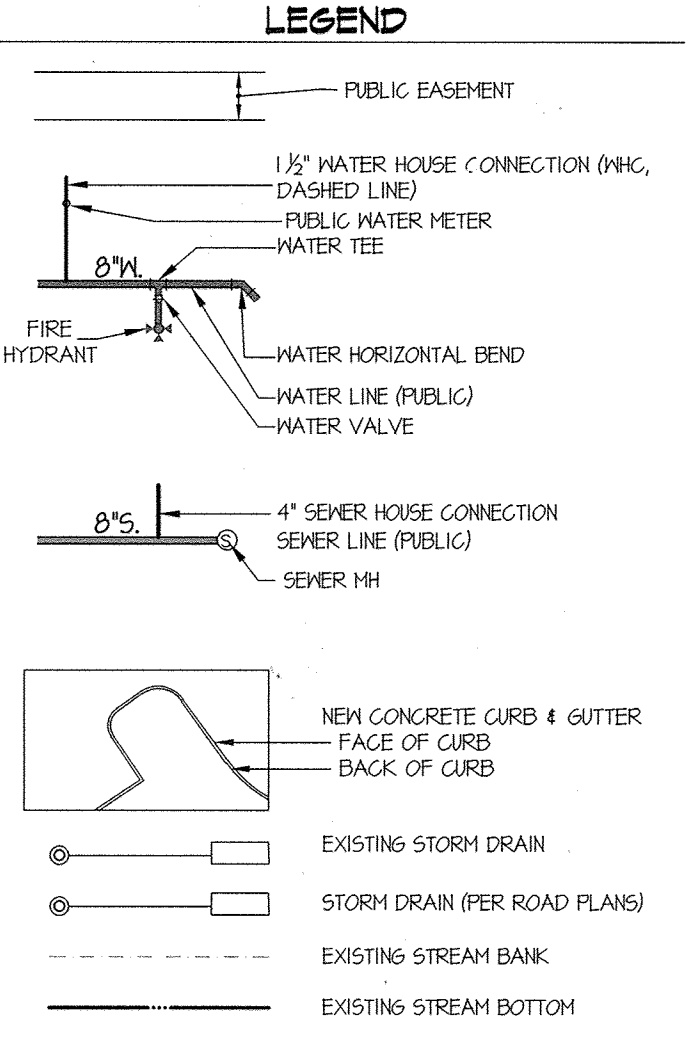


ITEMS	QUANTITIES ESTIMATED	AS-BUILT		
		QUANTITIES	TYPE	MANUFACTURER/SUPPLIER
6" WATER MAIN (F.H.) (C400 PVC) (SDR 14)	265 LF	265 LF	PVC	J.M. EAGLE
8" WATER MAIN (C400 PVC) (SDR 14)	1658 LF	1658 LF	PVC	J.M. EAGLE
8" x 6" F.H.T.	6 EA.	6 EA.	MJ C193 EPOXY	STAR PIPE
8" x 8" T.	3 EA.	3 EA.	MJ C193 EPOXY	STAR PIPE
8" V.	6 EA.	6 EA.	MJ GATE VALVE	MUELLER
8" CAP	4 EA.	4 EA.	MJ C193 EPOXY	STAR PIPE
6" V.	9 EA.	9 EA.	MJ GATE VALVE	MUELLER
8" 1/4" HB.	0 EA.	NA	NA	NA
8" 1/2" HB.	6 EA.	6 EA.	MJ C193 EPOXY	STAR PIPE
8" 3/4" HB.	0 EA.	NA	NA	NA
8" 1" HB.	2 EA.	2 EA.	MJ C193 EPOXY	STAR PIPE
8" 2.5" HDC	1 EA.	1 EA.	PLASTIC	NORTH AMERICAN PIPE SPEC.
8" 1/4" V.B.	3 EA.	3 EA.	MJ C193 EPOXY	STAR PIPE
8" 1/2" V.B.	4 EA.	4 EA.	MJ C193 EPOXY	STAR PIPE
8" 3/4" V.B.	4 EA.	4 EA.	MJ C193 EPOXY	STAR PIPE
8" 1" V.B.	4 EA.	4 EA.	MJ C193 EPOXY	STAR PIPE
FIRE HYDRANT	6 EA.	6 EA.	A-429 HYDRANT	MUELLER
8" 2.0" HDC	3 EA.	3 EA.	PLASTIC	NORTH AMERICAN PIPE SPEC.
8" SEWER MAIN (PVC-SDR 35)	506 LF.	506 LF.	PVC	J.M. EAGLE
4" MANHOLE	7 EA.	7 EA.	PRECAST CONC.	CONTRACTOR'S PRECAST CONC.
6" CAP	3 EA.	3 EA.	MJ B153 EPOXY	STAR PIPE
8" 2.8" HDC	3 EA.	3 EA.	PLASTIC	NORTH AMERICAN PIPE SPEC.
8" x 6" T.	3 EA.	3 EA.	MJ C193 EPOXY	STAR PIPE
8" SEWER MAIN (DIP)	408 LF.	408 LF.	D.I.P.	US PIPE
8" 2.0" HDC	1 EA.	1 EA.	PLASTIC	NORTH AMERICAN PIPE SPEC.

NAME OF UTILITY CONTRACTOR: (HTI) HIGHLAND TURF INC.

SURVEY AND DRAFTING DIV. CHECKBOX: AS-BUILT DATE:



SEDIMENT CONTROL MEASURES WILL BE IMPLEMENTED IN ACCORDANCE WITH F-16-107, SECTION 308 OF THE SPECIFICATIONS AT SITE DEVELOPMENT PLAN STAGE.

THIS DEVELOPMENT PLAN IS APPROVED FOR SOIL EROSION AND SEDIMENT CONTROL BY THE HOWARD COUNTY DEPARTMENT OF PUBLIC WORKS.

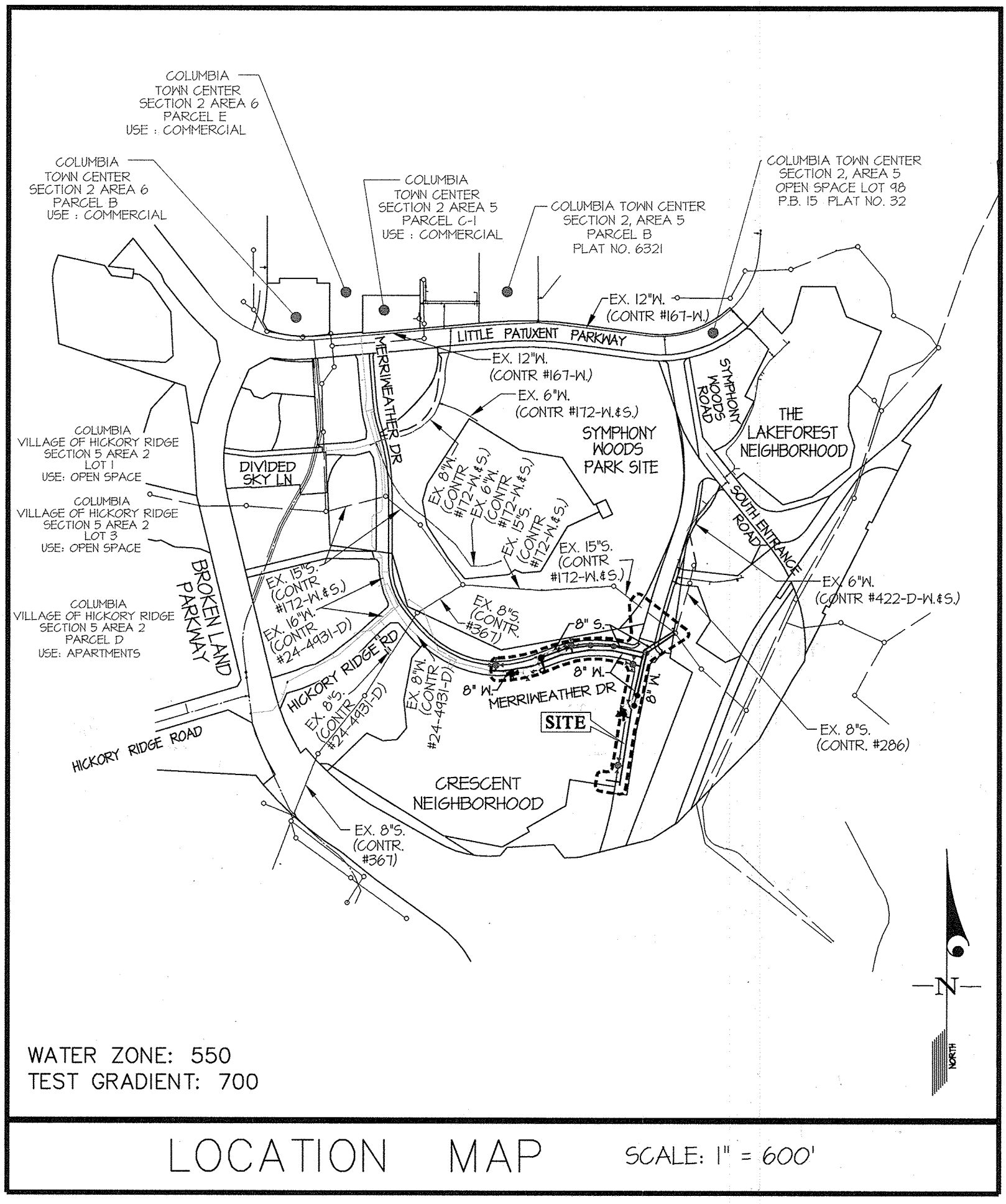
APPROVED: *John R. White* 4/14/17

SHEET INDEX	
1.	COVER SHEET
2.	WATER & SEWER EXTENSION PLAN
3.	WATER & SEWER PROFILE
4.	WATER & SEWER PROFILE

DNR-19-007 Waiver Note - For Fire Hydrant 'E'

On December 17, 2016, the Dept. of Public Works approved DNR-19-007 which requested a waiver from Sections 92.2A.2 and 92.2B.2 which requires an individual fire hydrant (FH) easement sized according to standard detail W-112 and a minimum 10-foot horizontal clearance between any permanent structure and edge of a public utility easement respectively. The approval came with the following conditions and limitations:

- Show and label the proposed public easement on associated plat and w/s cont. 24-4975-D
- Easement surrounding proposed FH shall be from the property line to a point 7'-7" rear of hydrant with a width 1' less centered thereon.
- Redline the plan and Section 'A-A' provided as clarification, onto w/s cont. 24-4975-D as documentation of the conditions at the proposed FH location.
- Call out on the contract drawings that the contractor shall provide a K-81 AWS FH from Kennedy Valve.



WATER ZONE: 550
TEST GRADIENT: 700

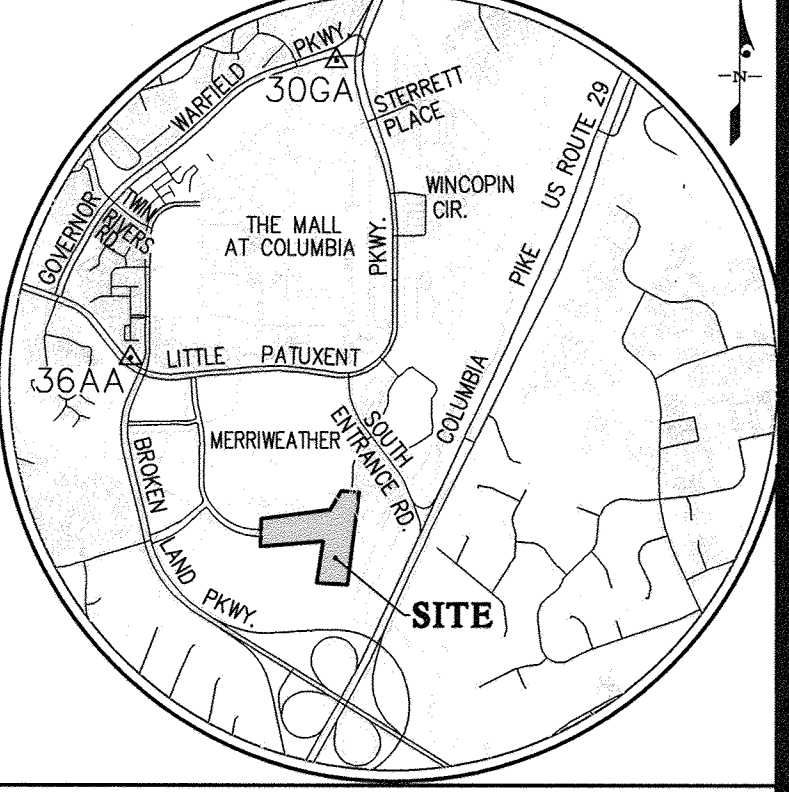
LOCATION MAP SCALE: 1" = 600'

CONTRACT No. 24-4975-D
DOWNTOWN COLUMBIA
CRESCENT NEIGHBORHOOD - PHASE 2A
NON-BUILDABLE BULK PARCELS M-1 THRU O-1 AND O.S. LOT 9
COLUMBIA TOWN CENTER
SECTION 1
HOWARD COUNTY, MARYLAND
DEPARTMENT OF PUBLIC WORKS

AS-BUILT

BY: *[Signature]* DATE: 9/10/18

TYPE OF BUILDING	COMMERCIAL
NUMBER OF LOTS	0
NUMBER OF S.H.C.'s	0
NUMBER OF W.H.C.'s	0
LIMIT OF DISTURBANCE	7.4 ACRES
SEWER SHED	MIDDLE PATUXENT
PUMPING STATION	LITTLE PATUXENT RECLAMATION PLANT



VICINITY MAP
SCALE: 1" = 2,000'

ADC MAP 33 GRID A-1 AND A-2

HOWARD COUNTY CONTROL STATIONS

306A	36AA
NORTHING: 566,053,5419	NORTHING: 562,804,8537
EASTING: 1352,117,5307	EASTING: 1344,906,1701
ELEVATION: 334.878	ELEVATION: 354.151
(LATEST ADJ. NOV. 2008)	(LATEST ADJ. NOV. 2008)

- GENERAL NOTES**
Revised - October 2013
- Part I**
- Approximate locations of existing mains are shown. The contractor shall take all necessary precautions to protect existing mains and services and maintain uninterrupted service. Any damage incurred shall be repaired immediately to the satisfaction of the Engineer at the contractor's expense.
 - Topographic AIR surveys were performed on DECEMBER, 2008 by MCKENZIE SNYDER.
 - Horizontal and Vertical Survey Controls:
The coordinates shown on the drawings are based on Maryland State Reference System NAD '83/91 as projected by Howard County Geodetic Control Stations No. 47DC, and No. 47EB.
All vertical controls are based on NAVD '88. Vertical controls provided on the drawings are STANDARD DISCS ON CONCRETE MONUMENTS.
 - All pipe elevations shown are invert elevations unless otherwise noted on the plans.
 - Clear all utilities by a minimum of 12 inches. Clear all poles by 5'-0" minimum or taller as required unless otherwise noted. The owner has contacted the utility companies and has made arrangements for bracing of poles as shown on the drawings. In the event the contractor's work requires the bracing of additional poles, any cost incurred by the owner for the bracing of additional poles or damages shall be deducted from monies owed the contractor. The contractor shall coordinate with the utility companies to schedule the bracing of the poles.
 - For details not shown on the drawing and for materials and construction methods, use Howard County Design Manual, Volume IV, Standard Specifications and Details for Construction (Latest Edition). The contractor shall have a copy of Volume IV on the job.
 - Where test pits have been made on existing utilities, they are noted by the symbol \oplus at the locations of the test pits. A note or notes containing the results of the test pit or pits is included on the drawings. Existing utilities in the vicinity of the proposed work for which test pits have not been dug shall be located by the contractor two weeks in advance of construction operations at his own expense.
 - The contractor shall notify the following utility companies or agencies at least five working days before starting work shown on these plans:

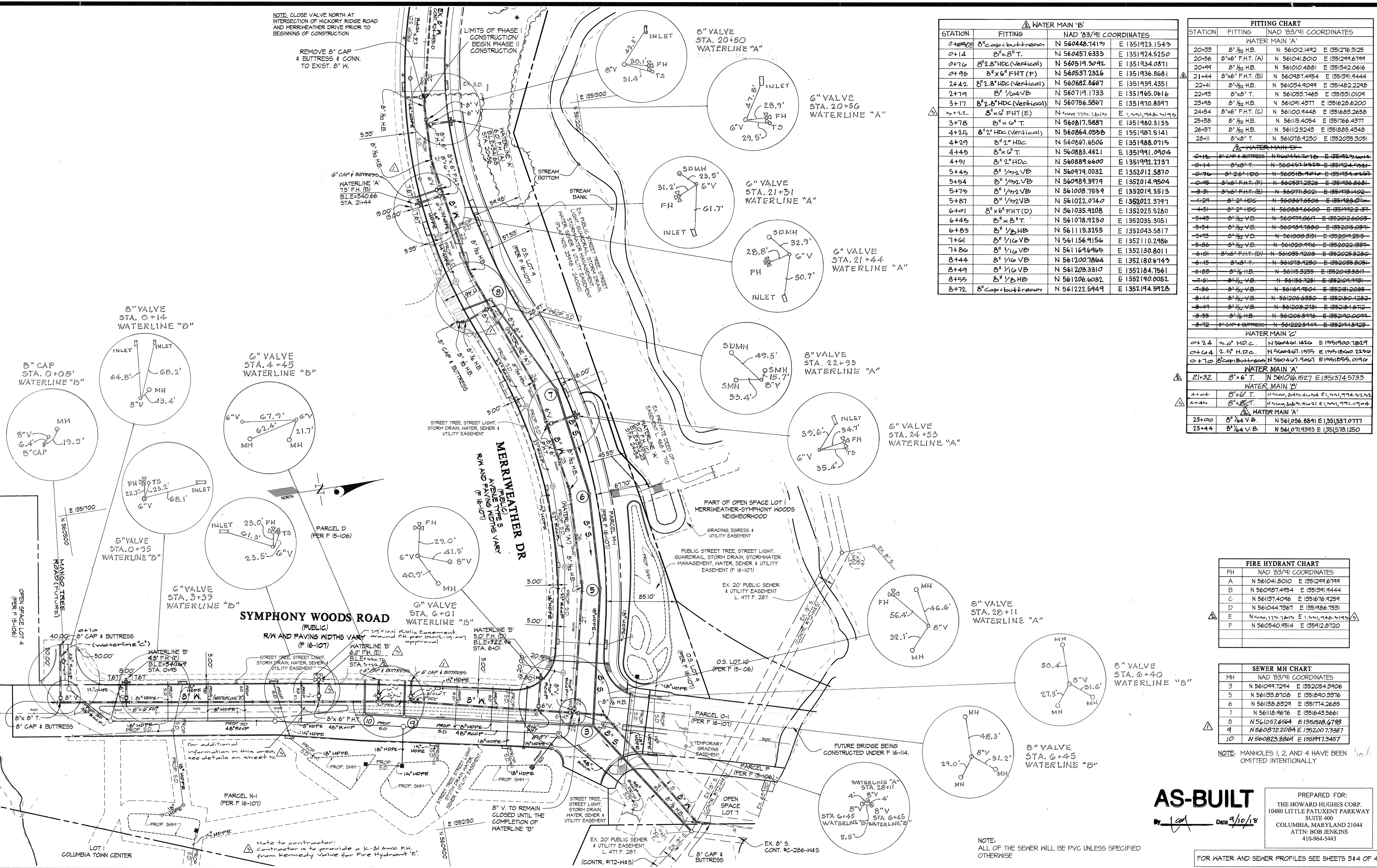
AT&T	1-800-252-1133
B&E (Construction Services)	410-637-8713
B&E (Emergency)	410-625-0123
Bureau of Utilities	410-313-4400
Colonial Pipeline Co.	410-745-1340
Miss Utility	1-800-251-TTTT
State Highway Administration	410-531-5533
Verizon	1-800-743-0033
- Part II WATER**
- All water mains shall be D.I.P. Class 54 unless otherwise noted.
 - Tops of all water mains shall have a minimum of 3'-6" of cover unless otherwise noted.
 - Valves adjacent to tees shall be strapped to tees.
 - All fittings shall be buttressed or anchored with concrete in accordance with Standard Details unless otherwise provided for on the drawings.
 - Fire hydrants shall be set to the bury line elevations shown on the drawings. All fire hydrants shall be installed in accordance with Standard Details. The soil around the fire hydrant shall be compacted in accordance with Section 1000' and Section 1005' of the Standard Specifications.
 - The contractor shall not operate any water main valves on the existing water system.
 - Tracer wires and continuity test stations shall be installed on all DIP and PVC water mains in accordance with the Howard County Design Manual.
 - For PVC water mains, all records for the Quality Control and Qualification Test Requirements noted in Section 51 of the ANWA Standard C400 for PVC pressure pipe shall be submitted with the pipe material certifications or shop drawings prior to approval of the material for use. The test records shall be for the pipe to be installed under this contract. All PVC pipe shall contain markings to allow cross referencing of the pipe supplied to the test records received.
 - Unless otherwise noted on the plans or in the specifications sacrificial anodes shall be installed on all valves and metallic fittings used with PVC water mains in accordance with Volume IV, Standard Specifications and Details for Construction. Seventeen (17) pound Magnesium anodes shall be installed on all valves and ductile iron fittings including restraints and harnesses. Twelve (12) pound Zinc anodes shall be installed on all stainless steel fittings and saddles used with PVC mains. All gaskets used with PVC mains shall be ductile iron.
 - Proper Assembly of Gasketed PVC Pipe Joints: The manufacturer's insertion line of gasketed PVC pipe joints indicates the maximum depth of insertion of the spigot into the bell. After assembly of the joint, the insertion line shall remain visible. Dual insertion lines on gasketed PVC pipe indicate the maximum and minimum depth of insertion of the spigot into the bell. The contractor shall not over insert or over home the spigot into the bell of PVC pipe.
 - All changes in horizontal or vertical direction of PVC water pipe shall be made with standard bends, 5-degree sweeps or high deflection (HD) couplings. No bending of the pipe or deflecting of PVC pipe joints is permitted. Where high deflection couplings or 5-degree sweeps are permitted, the contractor shall provide one full pipe length (20-foot long) on either side of the high deflection coupling or 5-degree sweep. The contractor shall use a vibratory plate compactor or other approved means to thoroughly compact the #51 stone on both sides of the high deflection coupling or 5-degree sweep, taking care not to use compaction equipment directly over the fitting.
- PVC high deflection couplings shall be limited to a total deflection of 3-degrees (1 1/2-degree on either end of the coupling), shall be rated for a minimum 200 psi meeting the requirements of ANWA C400, shall have a minimum lay length of 4-inches and shall have center stops. PVC High deflection couplings shall be Certaintec PVC High Deflection (HD) Stop Couplings or equal. Five degree sweeps shall be bell by spigot, rated for a minimum 225 psi, DR18 meeting the requirements of ANWA C400 and shall be Multi Fittings (IpeX) Blue Brute DR18 or equal.
- When PVC high deflection couplings or PVC 5-degree sweeps are used to facilitate changes in horizontal or vertical alignments of ANWA C-400 PVC pipelines, the contractor shall install devices for the prevention of over-insertion of the PVC pipe spigots or plain ends into the push on bell joint on both sides of the high deflection couplings and 5-degree sweeps. Bell stops shall be placed at the proper insertion line for the fitting. The bell stop shall be manufactured of ductile iron and incorporate an expansion retention spring to allow for pipe expansion and contraction. The bell stops shall be Series 5000 Mega-Stop, as manufactured by EBAA Iron, Inc. or approved equal.
- Part III SEWER**
- All sewer mains shall be D.I.P. or P.V.C. unless otherwise noted.
 - All manholes shall be 4'-0" inside diameter unless otherwise noted.
 - Force mains shall be D.I.P. only.
 - Manholes shown with 12" and 16" walls are for brick manholes only.
 - Manholes designated W.T. in plan and profile shall have watertight frame and cover, Standard Detail G5.52. Where watertight manhole frames and covers are used, set top of frame 1'-6" above finished grade unless otherwise noted on the drawings.
 - House(s) with the symbol "C.N.S." indicates that the cellar cannot be served.

DEPARTMENT OF PUBLIC WORKS HOWARD COUNTY, MARYLAND	DEPARTMENT OF PLANNING AND ZONING HOWARD COUNTY, MARYLAND	GLW GUTSCHICK LITTLE & WEBER, P.A. CIVIL ENGINEERS, LAND SURVEYORS, LAND PLANNERS, LANDSCAPE ARCHITECTS 3909 NATIONAL DRIVE - SUITE 250 - BURTONSVILLE OFFICE PARK BURTONSVILLE, MARYLAND 20886 TEL: 301-421-4024 FAX: 301-989-2524	DATE FEB., 2017	PROFESSIONAL CERTIFICATION I HEREBY CERTIFY THAT THESE PLANS WERE PREPARED OR APPROVED BY ME, AND THAT I AM A DULY LICENSED PROFESSIONAL ENGINEER UNDER THE LAWS OF THE STATE OF MARYLAND, LICENSE NO. 12975 EXP. DATE: MAY 26, 2018	REVISION REV. 1 Added Design Manual Waiver Note 1-9-19 REV. 2 Revised quantities 6-18-18 REV. 3 REVISED LOCATION MAP AND QUANTITIES 11/06/17	SCALE AS SHOWN	
CHIEF, BUREAU OF UTILITIES DATE: 2/14/17	CHIEF, DEVELOPMENT ENGINEERING DIVISION DATE: 4-17-17	DES. JH DRN. JH CHK. DEV	11071	3/17/17	DATE	600' SCALE MAP NO. 36 & 39 BLOCK NO. 01	
COVER SHEET						DOWNTOWN COLUMBIA CRESCENT NEIGHBORHOOD CONTRACT No. 24-4975-D NON-BUILDABLE BULK PARCELS M-1 THRU O-1 AND O.S. LOT 9 COLUMBIA TOWN CENTER SECTION 1 HOWARD COUNTY, MARYLAND ELECTION DISTRICT NO. 5	1 OF 4

NOTE: CLOSE VALVE NORTH AT INTERSECTION OF HICKORY RIDGE ROAD AND MERRIWEATHER DRIVE PRIOR TO BEGINNING OF CONSTRUCTION

REMOVE 8" CAP & BUTTRESS TO EXIST. 8" M.

LIMITS OF PHASE I CONSTRUCTION BEGIN PHASE II CONSTRUCTION



WATER MAIN 'B'			
STATION	FITTING	NAD '83/91 COORDINATES	
0+00	8" cap & buttress	N 560448.7417	E 1351923.1547
0+14	8" x 8" T.	N 560457.6333	E 1351924.5250
0+76	8" 2.8" HDC (Vertical)	N 560519.3042	E 1351934.0811
0+95	8" x 6" FHT (F)	N 560537.2326	E 1351936.8681
2+42	8" 2.8" HDC (Vertical)	N 560682.8467	E 1351954.4351
2+79	8" 1/2" V.B.	N 560719.1733	E 1351965.0616
3+17	8" 2.8" HDC (Vertical)	N 560756.5867	E 1351970.8547
3+22	8" x 6" FHT (E)	N 560777.7817	E 1351974.8717
3+78	8" x 6" T.	N 560817.5887	E 1351980.3133
4+25	8" 2" HDC (Vertical)	N 560864.0558	E 1351987.5141
4+29	8" 2" HDC	N 560867.6506	E 1351988.0715
4+45	8" x 6" T.	N 560883.4621	E 1351991.0904
4+91	8" 2" HDC	N 560889.6600	E 1351992.2137
5+43	8" 1/2" V.B.	N 560979.0032	E 1352012.5870
5+54	8" 1/2" V.B.	N 560989.3979	E 1352014.9504
5+73	8" 1/2" V.B.	N 561008.7539	E 1352019.3513
5+87	8" 1/2" V.B.	N 561022.0740	E 1352022.3747
6+21	8" x 6" FHT (D)	N 561035.9208	E 1352025.5280
6+45	8" x 8" T.	N 561078.9230	E 1352035.3051
6+83	8" 1/2" V.B.	N 561119.3255	E 1352043.5817
7+61	8" 1/2" V.B.	N 561156.9156	E 1352110.2486
7+86	8" 1/2" V.B.	N 561169.6965	E 1352130.8011
8+44	8" 1/2" V.B.	N 561200.7864	E 1352180.6173
8+49	8" 1/2" V.B.	N 561209.3310	E 1352184.7561
8+55	8" 1/2" V.B.	N 561206.6032	E 1352190.0052
8+72	8" cap & buttress	N 561222.5949	E 1352194.5923

FITTING CHART			
STATION	FITTING	NAD '83/91 COORDINATES	
WATER MAIN 'A'			
20+33	8" 1/2" H.B.	N 561012.1442	E 1351216.3125
20+56	8" x 6" F.H.T. (A)	N 561041.8010	E 1351249.6799
20+99	8" 1/2" H.B.	N 561010.4881	E 135142.0616
21+44	8" x 6" F.H.T. (B)	N 560987.4454	E 1351391.9444
22+41	8" 1/2" H.B.	N 561034.9099	E 1351482.2298
22+93	8" x 8" T.	N 561053.7465	E 1351531.0109
23+98	8" 1/2" H.B.	N 561091.4377	E 1351628.6200
24+54	8" x 6" F.H.T. (C)	N 561009.4448	E 1351685.2658
25+38	8" 1/2" H.B.	N 56115.4054	E 1351766.4377
26+57	8" 1/2" H.B.	N 56112.5243	E 1351805.4348
28+11	8" x 8" T.	N 561078.9230	E 1352035.3051

WATER MAIN 'B'			
0+14	8" cap & buttress	N 560457.6333	E 1351924.5250
0+14	8" x 8" T.	N 560457.6333	E 1351924.5250
0+76	8" 2.8" HDC	N 560519.3042	E 1351934.0811
0+95	8" x 6" FHT (F)	N 560537.2326	E 1351936.8681
2+42	8" 2.8" HDC	N 560682.8467	E 1351954.4351
2+79	8" 1/2" V.B.	N 560719.1733	E 1351965.0616
3+17	8" 2.8" HDC	N 560756.5867	E 1351970.8547
3+22	8" x 6" FHT (E)	N 560777.7817	E 1351974.8717
3+78	8" x 6" T.	N 560817.5887	E 1351980.3133
4+25	8" 2" HDC	N 560864.0558	E 1351987.5141
4+29	8" 2" HDC	N 560867.6506	E 1351988.0715
4+45	8" x 6" T.	N 560883.4621	E 1351991.0904
4+91	8" 2" HDC	N 560889.6600	E 1351992.2137
5+43	8" 1/2" V.B.	N 560979.0032	E 1352012.5870
5+54	8" 1/2" V.B.	N 560989.3979	E 1352014.9504
5+73	8" 1/2" V.B.	N 561008.7539	E 1352019.3513
5+87	8" 1/2" V.B.	N 561022.0740	E 1352022.3747
6+21	8" x 6" FHT (D)	N 561035.9208	E 1352025.5280
6+45	8" x 8" T.	N 561078.9230	E 1352035.3051
6+83	8" 1/2" V.B.	N 561119.3255	E 1352043.5817
7+61	8" 1/2" V.B.	N 561156.9156	E 1352110.2486
7+86	8" 1/2" V.B.	N 561169.6965	E 1352130.8011
8+44	8" 1/2" V.B.	N 561200.7864	E 1352180.6173
8+49	8" 1/2" V.B.	N 561209.3310	E 1352184.7561
8+55	8" 1/2" V.B.	N 561206.6032	E 1352190.0052
8+72	8" cap & buttress	N 561222.5949	E 1352194.5923

WATER MAIN 'C'			
0+24	8" 2" HDC	N 560461.1426	E 1351900.7829
0+64	8" 2" HDC	N 560467.1975	E 1351860.2280
0+70	8" cap & buttress	N 560467.1975	E 1351860.2280

WATER MAIN 'A'			
21+32	8" x 6" T.	N 561016.1527	E 1351374.5733

WATER MAIN 'B'			
4+44	8" x 6" T.	N 560987.4454	E 1351391.9444

WATER MAIN 'A'			
23+00	8" 1/2" V.B.	N 561056.8891	E 1351531.0117
23+44	8" 1/2" V.B.	N 561071.9393	E 1351578.1250

FIRE HYDRANT CHART	
FH	NAD '83/91 COORDINATES
A	N 561041.8010 E 1351249.6799
B	N 560987.4454 E 1351391.9444
C	N 561034.9099 E 1351482.2298
D	N 561091.4377 E 1351628.6200
E	N 561009.4448 E 1351685.2658
F	N 560987.4454 E 1351391.9444

SEWER MH CHART	
MH	NAD '83/91 COORDINATES
3	N 561099.7294 E 1352054.3906
5	N 561133.8708 E 1351890.3376
6	N 561138.8329 E 1351714.2685
7	N 56118.9676 E 1351643.5661
8	N 561057.6564 E 1351518.6798
9	N 560812.2084 E 1352007.3387
10	N 560823.8864 E 1351997.3457

NOTE: MANHOLES 1, 2, AND 4 HAVE BEEN OMITTED INTENTIONALLY

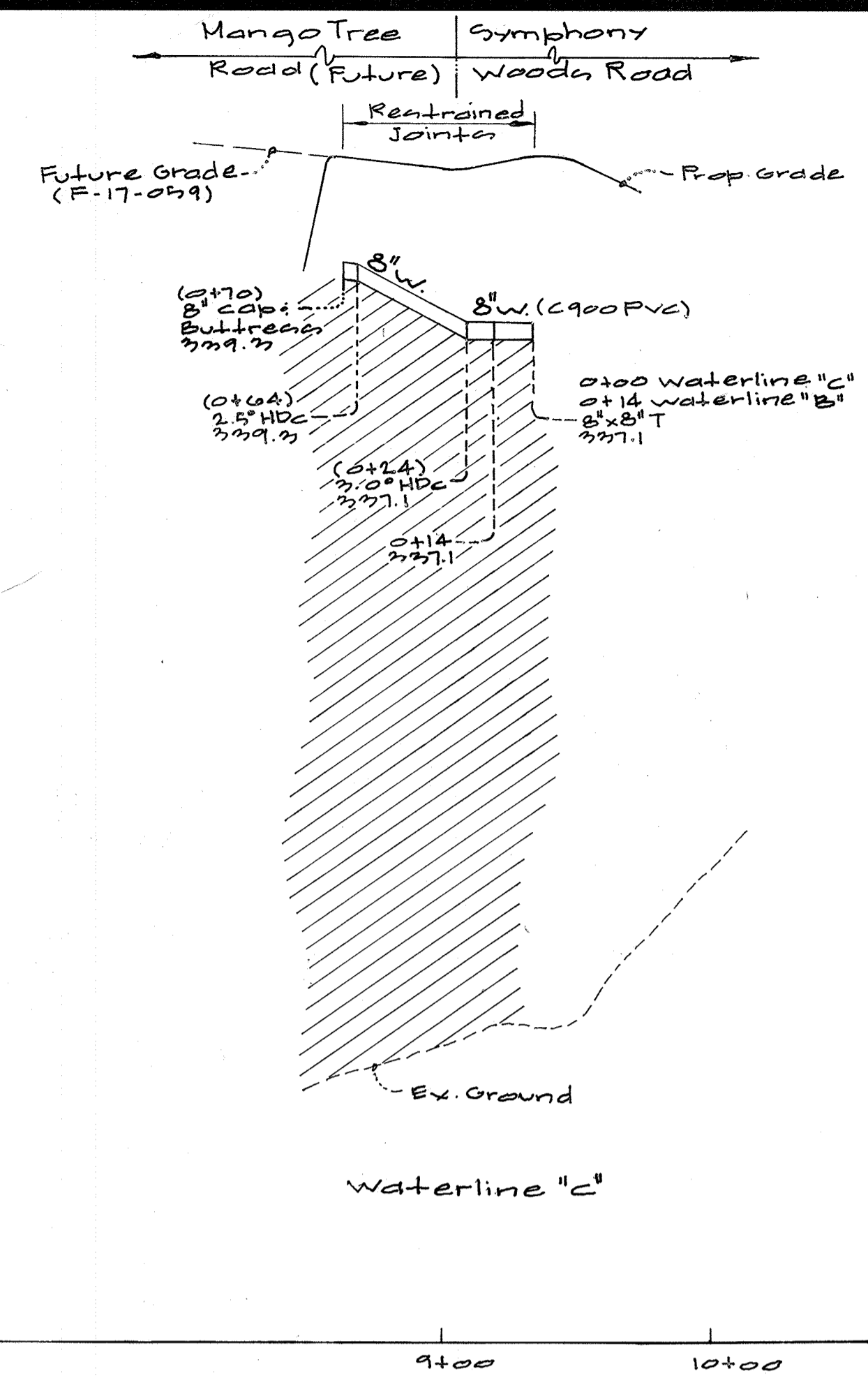
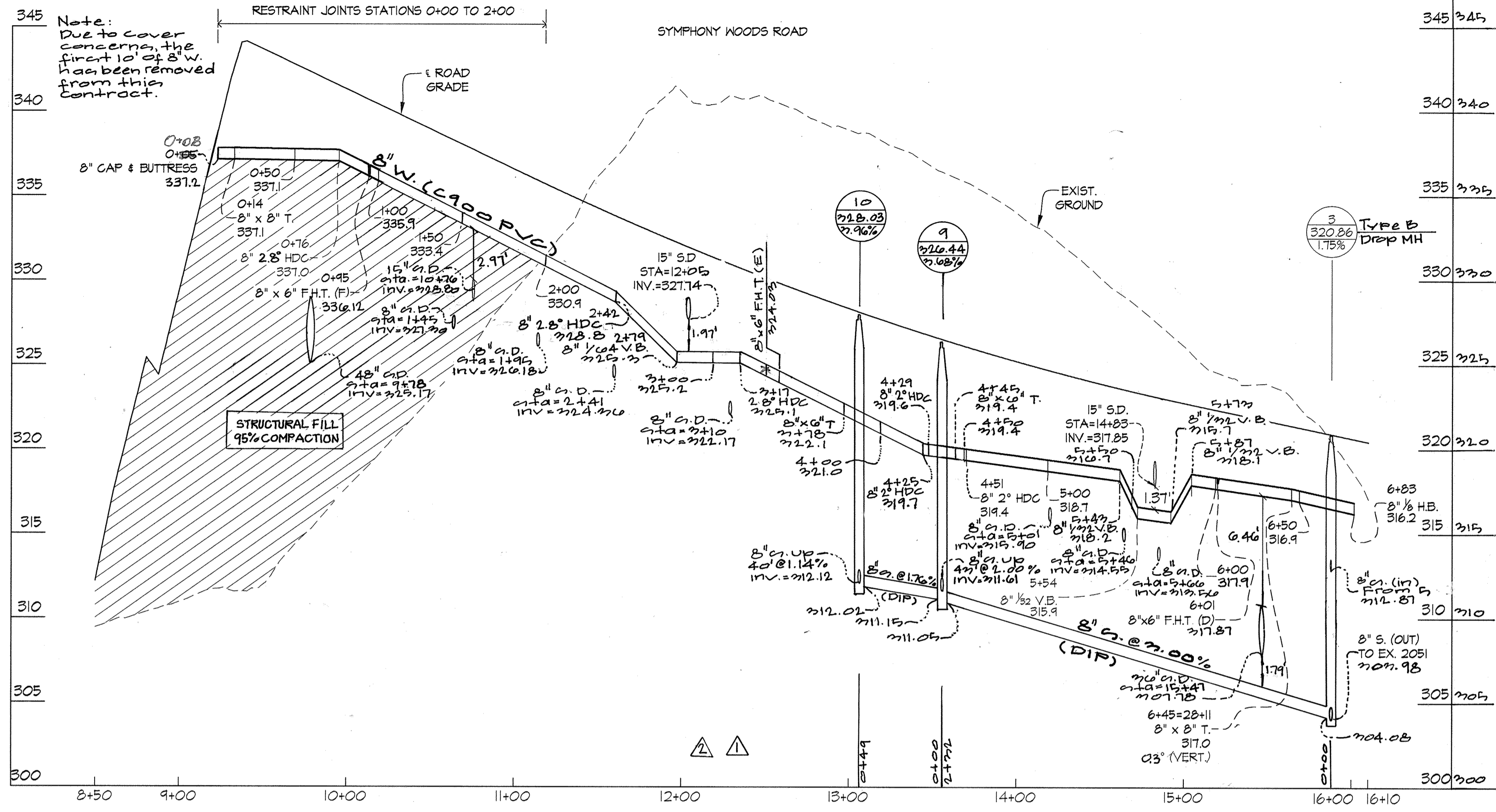
AS-BUILT
 PREPARED FOR:
 THE HOWARD HUGHES CORP.
 10480 LITTLE PATUXENT PARKWAY
 SUITE 400
 COLUMBIA, MARYLAND 21044
 ATTN: BOB JENKINS
 410-964-5443

FOR WATER AND SEWER PROFILES SEE SHEETS 384 OF 4

DEPARTMENT OF PUBLIC WORKS HOWARD COUNTY, MARYLAND DATE: 2/21/17	DEPARTMENT OF PLANNING AND ZONING HOWARD COUNTY, MARYLAND DATE: 4/17/17	GLWGUTSCHICK LITTLE & WEBER, P.A. CIVIL ENGINEERS, LAND SURVEYORS, LAND PLANNERS, LANDSCAPE ARCHITECTS 3909 NATIONAL BURTON DRIVE - SUITE 250 - BURTONVILLE, MARYLAND 20866 TEL: 301-421-4024 FAX: 301-421-4186	DATE: FEB., 2017 PROFESSIONAL CERTIFICATION I HEREBY CERTIFY THAT THESE PLANS WERE PREPARED OR APPROVED BY ME, AND THAT I AM A DULY LICENSED PROFESSIONAL ENGINEER UNDER THE LAWS OF THE STATE OF MARYLAND, LICENSE NO. 12975 EXP. DATE: MAY 26, 2018 G.L.W. No. 11071	DEPARTMENT OF PUBLIC WORKS HOWARD COUNTY, MARYLAND DATE: 2/21/17	DEPARTMENT OF PLANNING AND ZONING HOWARD COUNTY, MARYLAND DATE: 4/17/17	GLWGUTSCHICK LITTLE & WEBER, P.A. CIVIL ENGINEERS, LAND SURVEYORS, LAND PLANNERS, LANDSCAPE ARCHITECTS 3909 NATIONAL BURTON DRIVE - SUITE 250 - BURTONVILLE, MARYLAND 20866 TEL: 301-421-4024 FAX: 301-421-4186	DATE: FEB., 2017 PROFESSIONAL CERTIFICATION I HEREBY CERTIFY THAT THESE PLANS WERE PREPARED OR APPROVED BY ME, AND THAT I AM A DULY LICENSED PROFESSIONAL ENGINEER UNDER THE LAWS OF THE STATE OF MARYLAND, LICENSE NO. 12975 EXP. DATE: MAY 26, 2018 G.L.W. No. 11071	DEPARTMENT OF PUBLIC WORKS HOWARD COUNTY, MARYLAND DATE: 2/21/17	DEPARTMENT OF PLANNING AND ZONING HOWARD COUNTY, MARYLAND DATE: 4/17/17	GLWGUTSCHICK LITTLE & WEBER, P.A. CIVIL ENGINEERS, LAND SURVEYORS, LAND PLANNERS, LANDSCAPE ARCHITECTS 3909 NATIONAL BURTON DRIVE - SUITE 250 - BURTONVILLE, MARYLAND 20866 TEL: 301-421-4024 FAX: 301-421-4186	DATE: FEB., 2017 PROFESSIONAL CERTIFICATION I HEREBY CERTIFY THAT THESE PLANS WERE PREPARED OR APPROVED BY ME, AND THAT I AM A DULY LICENSED PROFESSIONAL ENGINEER UNDER THE LAWS OF THE STATE OF MARYLAND, LICENSE NO. 12975 EXP. DATE: MAY 26, 2018 G.L.W. No. 11071
--	---	---	--	--	---	---	--	--	---	---	--

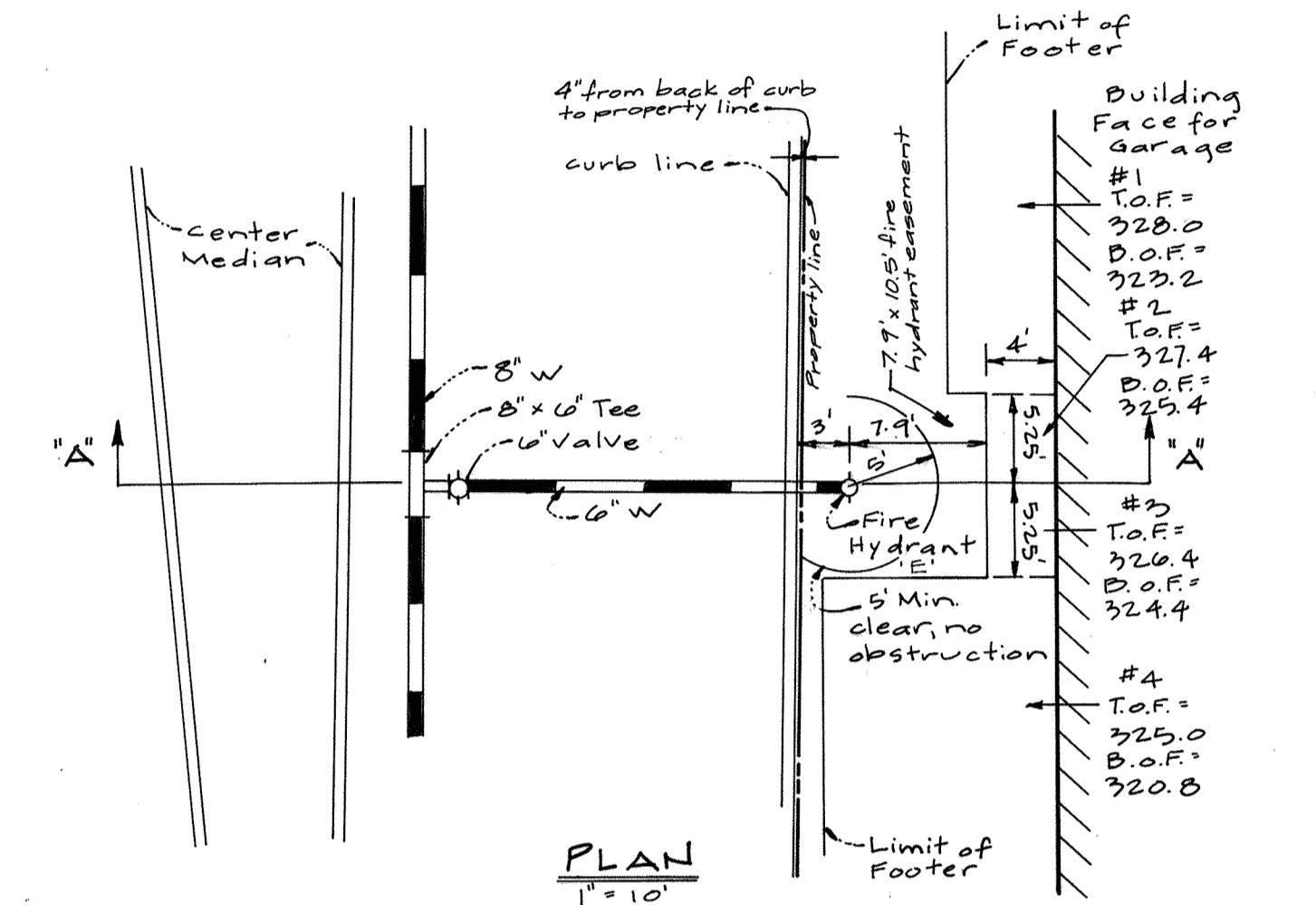
REVISION	DATE
1-9-17	1-9-17
7-02-18	7-02-18
11/6/17	11/6/17

WATER & SEWER EXTENSION PLAN
 600' SCALE MAP NO. 36 & 39 BLOCK NO. 01
 DOWNTOWN COLUMBIA
 CRESCENT NEIGHBORHOOD
 CONTRACT NO. 24-4975-D
 NON-BUILDABLE BULK PARCELS M-1 THRU O-1 AND O.S. LOT 9
 COLUMBIA TOWN CENTER SECTION I
 HOWARD COUNTY, MARYLAND
 ELECTION DISTRICT NO. 5
 SCALE: 1" = 50'
 SHEET: 2 OF 4

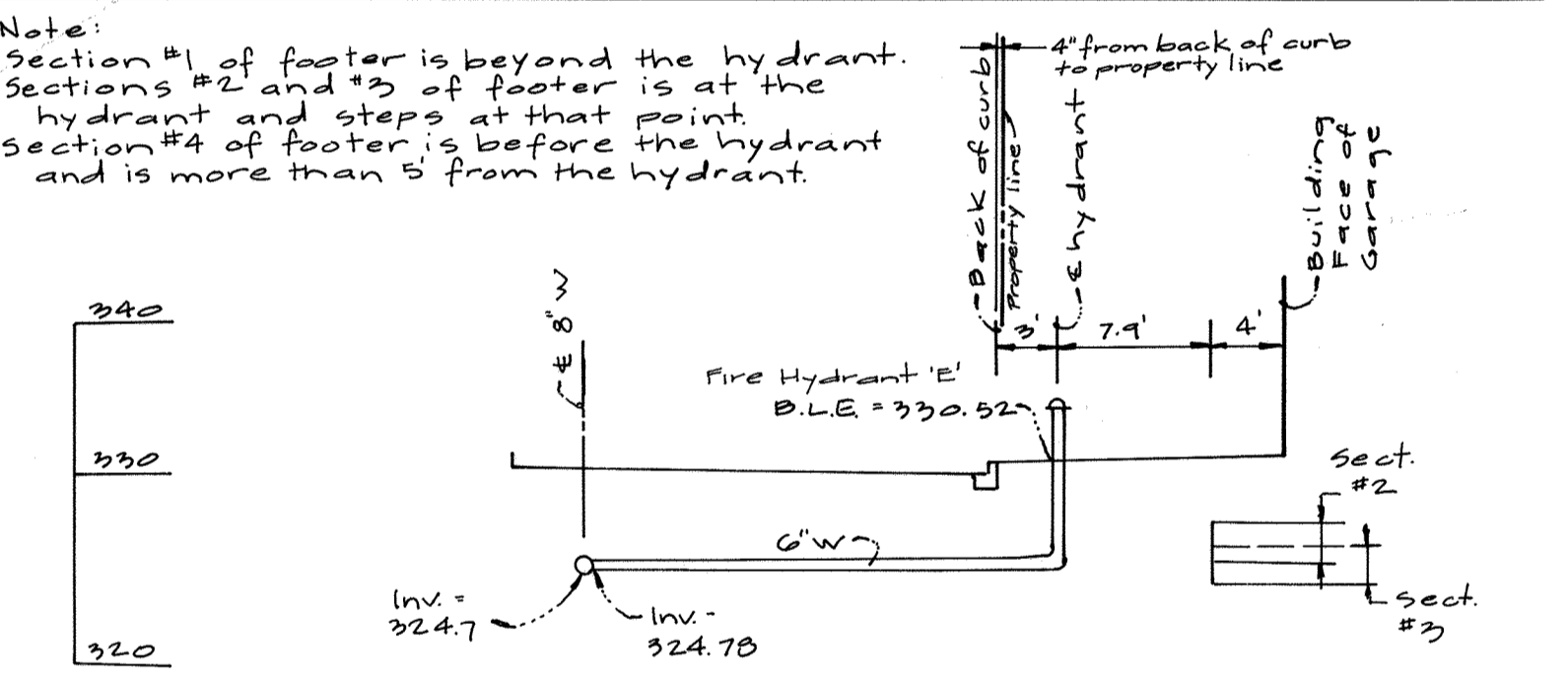


WATERLINE "B"
CENTERLINE ROAD STATIONS
SYMPHONY WOODS ROAD STA. 9+19 TO 16+00

PROFILE SCALES:
1" = 5' VERT.
1" = 50' HORZ.



Note:
- Section #1 of footer is beyond the hydrant.
- Sections #2 and #3 of footer is at the hydrant and steps at that point.
- Section #4 of footer is before the hydrant and is more than 5' from the hydrant.



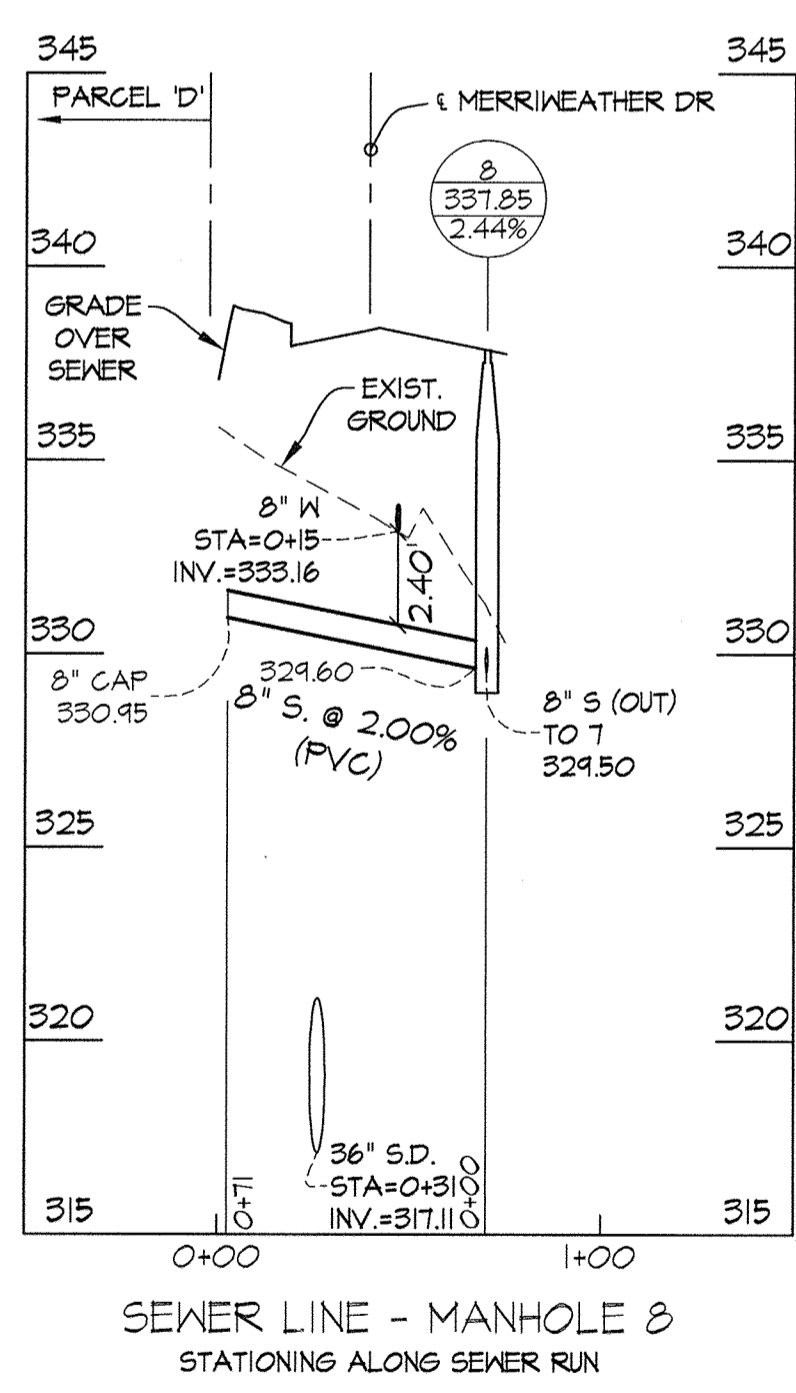
T.O.F. indicates Top of Footer Elevation
B.O.F. indicates Bottom of Footer Elevation

SECTION "A-A"
1" = 10' (Horz. & Vert.)

AS-BUILT

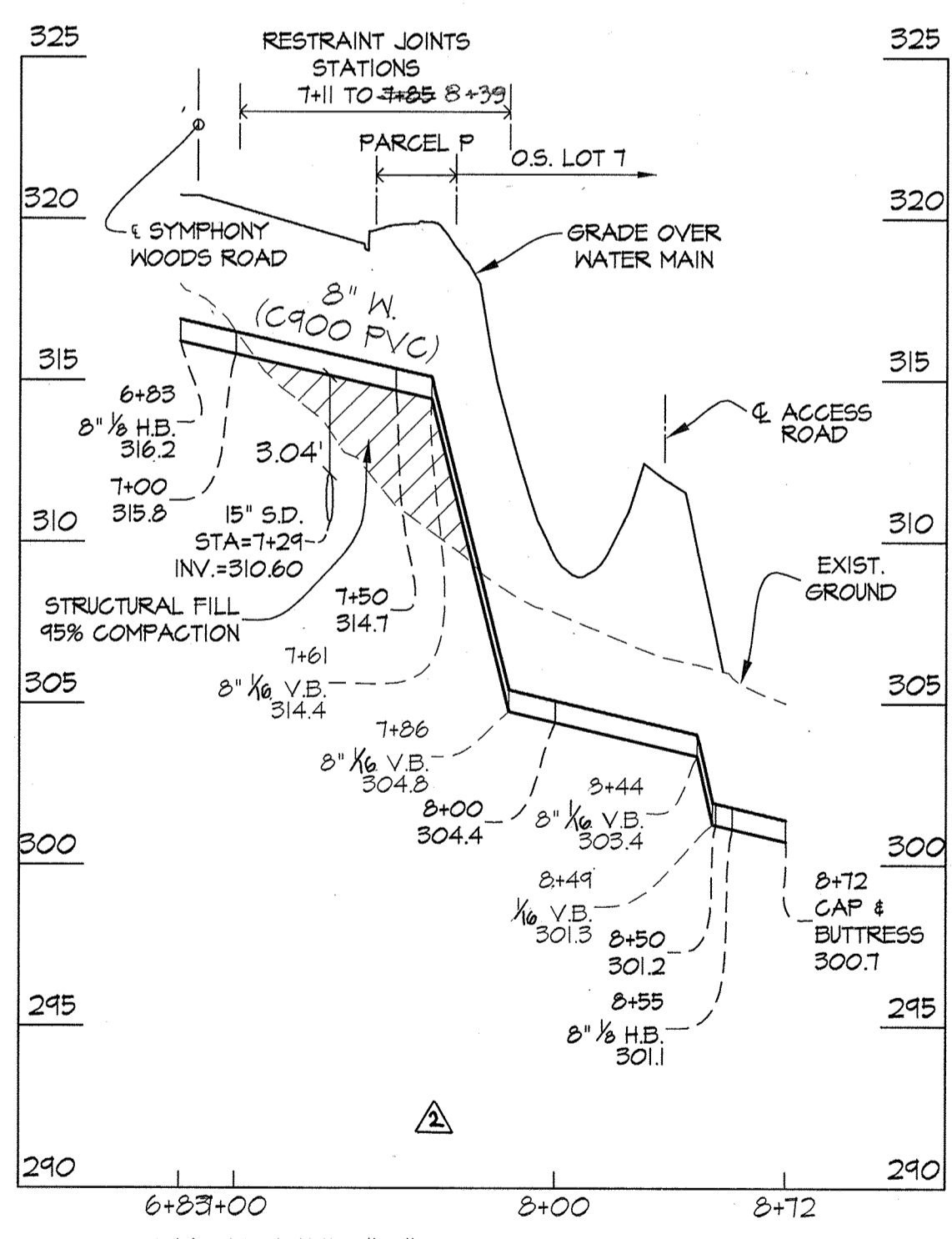
Date: 2/15/18

PREPARED FOR:
THE HOWARD HUGHES CORP.
10480 LITTLE PATUXENT PARKWAY
SUITE 400
COLUMBIA, MARYLAND 21044
ATTN: BOB JENKINS
410-964-5443



SEWER LINE - MANHOLE B
STATIONING ALONG SEWER RUN

PROFILE SCALES:
1" = 5' VERT.
1" = 50' HORZ.

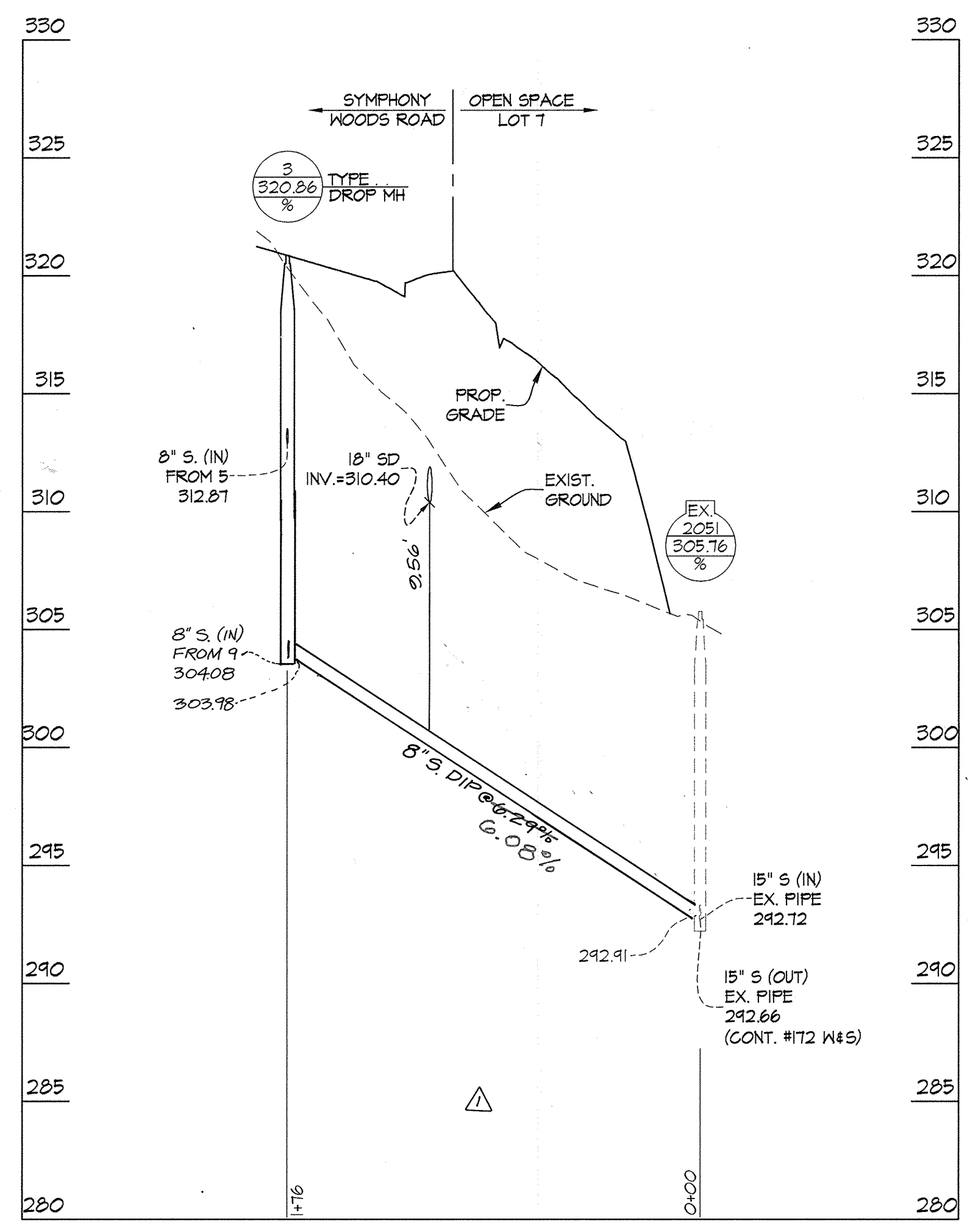


WATERLINE "B" PROFILE NEAR X-ING
STATIONING ALONG WATER LINE
STATIONS 6+83 TO 8+72

PROFILE SCALES:
1" = 5' VERT.
1" = 50' HORZ.

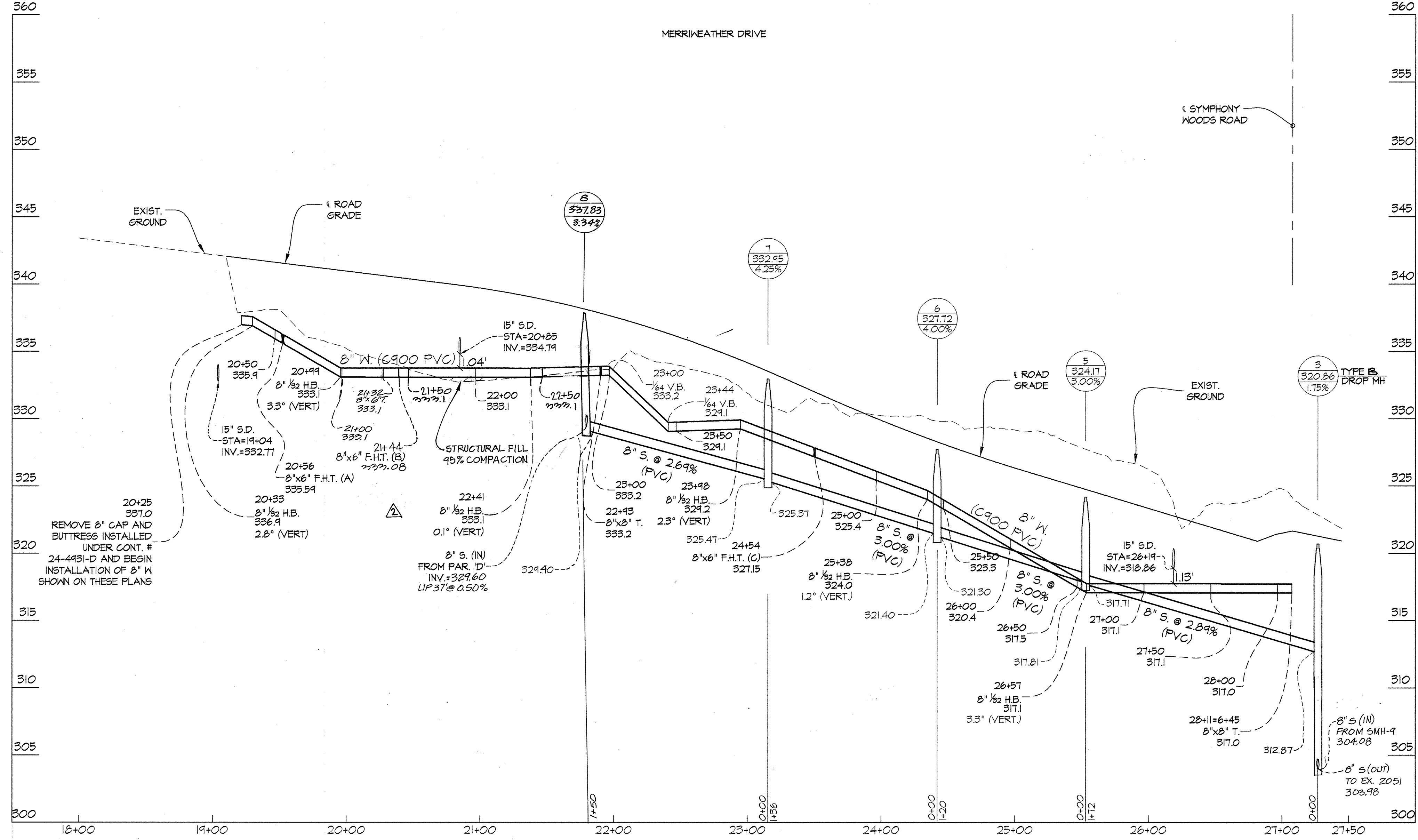
FOR WATER AND SEWER PLAN SEE SHEET 2 OF 4

DEPARTMENT OF PUBLIC WORKS HOWARD COUNTY, MARYLAND Chief, Bureau of Utilities DATE: 3/29/17	DEPARTMENT OF PLANNING AND ZONING HOWARD COUNTY, MARYLAND Chief, Development Engineering Division DATE: 4/17/17	GLWGUTSCHICK LITTLE & WEBER, P.A. CIVIL ENGINEERS, LAND SURVEYORS, LAND PLANNERS, LANDSCAPE ARCHITECTS 3909 NATIONAL DRIVE - SUITE 250 - BURTONSVILLE OFFICE PARK BURTONSVILLE, MARYLAND 20886 TEL: 301-421-4024 BAL: 410-880-1820 DC/VA: 301-989-2524 FAX: 301-421-4186	PROFESSIONAL CERTIFICATION I HEREBY CERTIFY THAT THESE PLANS WERE PREPARED OR APPROVED BY ME, AND THAT I AM A DULY LICENSED PROFESSIONAL ENGINEER UNDER THE LAWS OF THE STATE OF MARYLAND, LICENSE NO. 12975 EXP. DATE: MAY 26, 2018 3/8/17	RELOCATED HYDRANT & W/C TO AVOID CONFLICT WITH FOOTER AND PROVIDED PLAN AND PROFILE IN THE AREA OF THE HYDRANT 01-09-17 Revised waterline 'B' Profile 06-27-18 Rev. Sewer, A.D. Water in Waterline 'B' Profile 11-7-2017	WATER & SEWER EXTENSION PROFILES 600' SCALE MAP NO. 36 & 39 BLOCK NO. 01	DOWNTOWN COLUMBIA CRESCENT NEIGHBORHOOD CONTRACT No. 24-4975-D NON-BUILDABLE BULK PARCELS M-1 THRU O-1 AND O.S. LOT 9 COLUMBIA TOWN CENTER SECTION I HOWARD COUNTY, MARYLAND ELECTION DISTRICT No. 5	SCALE AS SHOWN
							SHEET 3 OF 4



SEWER LINE - MANHOLES 3 & EX. 2051
STATIONING ALONG SEWER RUN
SEWER STA. 0+00 TO 2+50

PROFILE SCALES:
1" = 5' VERT.
1" = 50' HORIZ.



WATERLINE "A"
CENTERLINE ROAD STATIONS
MERRIWEATHER DRIVE STA. 18+00 TO 27+50

PROFILE SCALES:
1" = 5' VERT.
1" = 50' HORIZ.

AS-BUILT
Date 9/10/15

PREPARED FOR:
THE HOWARD HUGHES CORP.
10480 LITTLE PATUXENT PARKWAY
SUITE 400
COLUMBIA, MARYLAND 21044
ATTN: BOB JENKINS
410-964-5443

FOR WATER AND SEWER PLAN SEE SHEET 2 OF 4

DEPARTMENT OF PUBLIC WORKS HOWARD COUNTY, MARYLAND Chief, Bureau of Utilities Date: 4.17.17	DEPARTMENT OF PLANNING AND ZONING HOWARD COUNTY, MARYLAND Chief, Development Engineering Division Date: M.6.	GLW GUTSCHICK LITTLE & WEBER, P.A. CIVIL ENGINEERS, LAND SURVEYORS, LAND PLANNERS, LANDSCAPE ARCHITECTS 3909 NATIONAL DRIVE - SUITE 250 - BURTONSVILLE OFFICE PARK BURTONSVILLE, MARYLAND 20866 TEL: 301-421-4024 BALT: 410-880-1820 DC/VA: 301-989-2524 FAX: 301-421-4186	DATE FEB., 2017	PROFESSIONAL CERTIFICATION I HEREBY CERTIFY THAT THESE PLANS WERE PREPARED OR APPROVED BY ME, AND THAT I AM A DULY LICENSED PROFESSIONAL ENGINEER UNDER THE LAWS OF THE STATE OF MARYLAND, LICENSE NO. 12975 EXP. DATE: MAY 26, 2018		3t HKJ BY NO	Revised Fire Hydrant 'B' station REVISED NPS IN WATERLINE "A" PROFILE	6-18-18 11/6/17	DATE REVISION	600' SCALE MAP NO. 36 & 39 BLOCK NO. 01	DOWNTOWN COLUMBIA CRESCENT NEIGHBORHOOD CONTRACT No. 24-4975-D NON-BUILDABLE BULK PARCELS M-1 THRU O-1 AND O.S. LOT 9 COLUMBIA TOWN CENTER SECTION 1 HOWARD COUNTY, MARYLAND ELECTION DISTRICT No. 5	SCALE AS SHOWN
			G.L.W. No. 11071									DES. JH DRN. JH CHK. DEV