

**GENERAL NOTES**

- PART I**
- APPROXIMATE LOCATIONS OF EXISTING MAINS ARE SHOWN. THE CONTRACTOR SHALL TAKE ALL NECESSARY PRECAUTIONS TO PROTECT EXISTING MAINS AND SERVICES AND MAINTAIN UNINTERRUPTED SERVICE. ANY DAMAGE INCURRED SHALL BE REPAIRED IMMEDIATELY TO THE SATISFACTION OF THE ENGINEER AT THE CONTRACTOR'S EXPENSE.
  - TOPOGRAPHIC FIELD SURVEYS WERE PERFORMED ON MARCH 1998 BY POTOMAC AERIAL.
  - HORIZONTAL AND VERTICAL SURVEY CONTROLS:  
THE COORDINATES SHOWN ON THE DRAWINGS ARE BASED ON MARYLAND STATE REFERENCE SYSTEM NAD 83/91 AS PROJECTED BY HOWARD COUNTY GEODETIC CONTROL STATIONS 47MT2, 47GE.  
ALL VERTICAL CONTROLS ARE BASED ON NAVD 88. VERTICAL CONTROLS PROVIDED ON DRAWINGS ARE:  
GEODETIC SURVEY CONTROL 47MT2 (N 530494.447/E 1350872.301)  
BRASS DISC SET ON TOP OF A CONCRETE MONUMENT.  
GEODETIC SURVEY CONTROL 47GE (N 529044.964/E 1350854.953)  
BRASS DISC SET ON TOP OF A CONCRETE MONUMENT.
  - ALL PIPE ELEVATIONS SHOWN ARE INVERT ELEVATIONS UNLESS OTHERWISE NOTED ON THE PLANS.
  - CLEAR ALL UTILITIES BY A MINIMUM OF 12 INCHES. CLEAR ALL POLES BY 5'-0" MINIMUM OR TUNNEL AS REQUIRED UNLESS OTHERWISE NOTED. THE OWNER HAS CONTACTED THE UTILITY COMPANIES AND HAS MADE ARRANGEMENTS FOR BRACING OF POLES AS SHOWN ON THE DRAWINGS. IN THE EVENT THE CONTRACTOR'S WORK REQUIRES THE BRACING OF ADDITIONAL POLES, ANY COST INCURRED BY THE OWNER FOR BRACING OF ADDITIONAL POLES OR DAMAGES SHALL BE DEDUCTED FROM MONIES OWED THE CONTRACTOR. THE CONTRACTOR SHALL COORDINATE WITH THE UTILITY COMPANIES TO SCHEDULE THE BRACING OF THE POLES.
  - FOR DETAILS NOT SHOWN ON THE DRAWING, AND FOR MATERIALS AND CONSTRUCTION METHODS, USE HOWARD COUNTY DESIGN MANUAL, VOLUME IV, STANDARD SPECIFICATIONS AND DETAILS FOR CONSTRUCTION (LATEST EDITION). THE CONTRACTOR SHALL HAVE A COPY OF VOLUME IV ON THE JOB.
  - WHERE TEST PITS HAVE BEEN MADE ON EXISTING UTILITIES, THEY ARE NOTED BY THE SYMBOL AT THE LOCATIONS OF THE TEST PITS. A NOTE OR NOTES CONTAINING THE RESULTS OF THE TEST PIT OR PITS IS INCLUDED ON THE DRAWINGS. EXISTING UTILITIES IN THE VICINITY OF THE PROPOSED WORK FOR WHICH TEST PITS HAVE NOT BEEN DUG SHALL BE LOCATED BY THE CONTRACTOR TWO WEEKS IN ADVANCE OF CONSTRUCTION OPERATIONS AT HIS OWN EXPENSE.
  - THE CONTRACTOR SHALL NOTIFY THE FOLLOWING UTILITY COMPANIES OR AGENCIES AT LEAST FIVE WORKING DAYS BEFORE STARTING WORK SHOWN THESE PLANS:  
AT&T ..... 1-800-252-1133  
BGE (CONSTRUCTION SERVICES) ..... 410-637-8713  
BGE (EMERGENCY) ..... 410-685-0123  
BUREAU OF UTILITIES ..... 410-313-4900  
COLONIAL PIPELINE CO ..... 410-795-1390  
MISS UTILITY ..... 1-800-257-7777  
STATE HIGHWAY ADMINISTRATION ..... 410-531-5533  
VERIZON ..... 1-800-743-0033
  - TREES AND SHRUBS ARE TO BE PROTECTED FROM DAMAGE TO THE MAXIMUM EXTENT. TREES AND SHRUBS LOCATED WITHIN THE CONSTRUCTION STRIP ARE NOT TO BE REMOVED OR DAMAGED BY THE CONTRACTOR.
  - THE CONTRACTOR SHALL REMOVE TREES, STUMPS AND ROOTS ALONG THE LINE OF EXCAVATION. PAYMENT FOR SUCH REMOVAL SHALL BE INCLUDED IN THE UNIT PRICE BID FOR CONSTRUCTION OF THE MAIN.
  - THE CONTRACTOR SHALL NOTIFY THE BUREAU OF HIGHWAYS, HOWARD COUNTY, AT (410) 313-7450 AT LEAST FIVE WORKING DAYS BEFORE ANY OPEN CUTTING OR BORING/JACKING OF ANY COUNTY ROAD FOR LAYING WATER/SEWER MAINS OR HOUSE CONNECTIONS. THE APPROVAL OF THESE DRAWINGS WILL CONSTITUTE COMPLIANCE WITH DPW REQUIREMENTS PER SECTION 18.114(c) OF THE HOWARD COUNTY CODE.

**PART II - WATER**

- ALL WATER MAINS SHALL BE C-900 PVC (DR-18) UNLESS OTHERWISE NOTED.
- TOPS OF ALL WATER MAINS SHALL HAVE A MINIMUM OF 3'-6" OF COVER UNLESS OTHERWISE NOTED.
- VALVES ADJACENT TO TEES SHALL BE STRAPPED TO TEES.
- ALL FITTINGS SHALL BE BUTTRESSED OR ANCHORED WITH CONCRETE IN ACCORDANCE WITH STANDARD DETAILS UNLESS OTHERWISE PROVIDED FOR ON THE DRAWINGS.
- FIRE HYDRANTS SHALL BE SET TO THE BURY LINE ELEVATIONS SHOWN ON THE DRAWINGS. ALL FIRE HYDRANTS SHALL BE INSTALLED IN ACCORDANCE WITH STANDARD DETAILS. THE SOIL AROUND THE FIRE HYDRANT SHALL BE COMPACTED IN ACCORDANCE WITH SECTION 1000 AND SECTION 1005 OF THE STANDARD SPECIFICATIONS.
- THE CONTRACTOR SHALL NOT OPERATE ANY WATER MAIN VALVES ON THE EXISTING WATER SYSTEM.
- TRACER WIRE AND CONTINUITY TEST STATIONS SHALL BE INSTALLED ON ALL DIP AND PVC WATER MAINS IN ACCORDANCE WITH THE HOWARD COUNTY DESIGN MANUAL.
- FOR PVC WATER MAINS, ALL RECORDS FOR THE QUALITY CONTROL AND QUALIFICATION TEST REQUIREMENTS NOTED IN SECTION 5.1 OF THE AWWA STANDARD C900 FOR PVC PRESSURE PIPE SHALL BE SUBMITTED WITH THE PIPE MATERIAL CERTIFICATIONS OR SHOP DRAWINGS PRIOR TO APPROVAL OF THE MATERIAL FOR USE. THE TEST RECORDS SHALL BE FOR THE PIPE TO BE INSTALLED UNDER THIS CONTRACT. ALL PVC PIPE SHALL CONTAIN MARKINGS TO ALLOW CROSS REFERENCING OF THE PIPE SUPPLIED TO THE REST RECORDS RECEIVED.
- UNLESS OTHERWISE NOTED ON THE PLANS OR IN THE SPECIFICATIONS, SACRIFICIAL ANODES SHALL BE INSTALLED ON ALL VALVES AND METALLIC FITTINGS USED WITH PVC WATER MAINS IN ACCORDANCE WITH VOLUME IV, STANDARD SPECIFICATIONS AND DETAILS FOR CONSTRUCTION. SEVENTEEN (17) POUND MAGNESIUM ANODES SHALL BE INSTALLED ON ALL VALVES AND DUCTILE IRON FITTINGS INCLUDING RESTRAINTS AND HARNESSSES. TWELVE (12) POUND ZINC ANODES SHALL BE INSTALLED ON ALL STAINLESS STEEL FITTINGS AND SADDLES USED WITH PVC MAINS. ALL "TEES" USED WITH PVC MAINS SHALL BE DUCTILE IRON.
- PROPER ASSEMBLY OF GASKETED PVC PIPE JOINTS; THE MANUFACTURER'S INSERTION LINE OF GASKETED PVC PIPE JOINTS INDICATES THE MAXIMUM DEPTH OF INSERTION OF THE SPIGOT INTO THE BELL. AFTER ASSEMBLY OF THE JOINT, THE INSERTION LINE SHALL REMAIN VISIBLE. DUAL INSERTION LINES ON GASKETED PVC PIPE INDICATE THE MAXIMUM AND MINIMUM DEPTH OF INSERTION OF THE BELL. THE CONTRACTOR SHALL NOT OVER INSERT OR OVER HOME THE SPIGOT INTO THE BELL OF PVC PIPE.
- SPRINKLER SYSTEM FOR SINGLE RESIDENTIAL DWELLING UNITS SHALL HAVE WATER HOUSE CONNECTIONS AND WATER METERS THAT ARE SIZED IN ACCORDANCE WITH THE DESIGN OF THE SPRINKLER SYSTEMS. SPRINKLER SYSTEMS FOR SINGLE RESIDENTIAL DWELLINGS SHALL HAVE A MINIMUM OF 1.5" SERVICE CONNECTION WITH A 1" OUTSIDE METER SETTING.

SEDIMENT CONTROL MEASURES WILL BE IMPLEMENTED IN ACCORDANCE WITH SECTION 308 OF THE SPECIFICATIONS AND WITH SITE DEVELOPMENT PLAN F-16-002.

THIS DEVELOPMENT IS APPROVED FOR SOIL EROSION AND SEDIMENT CONTROL BY THE HOWARD SOIL CONSERVATION DISTRICT.

*John R. Blanton* 8/4/16  
SOIL CONSERVATION DISTRICT DATE

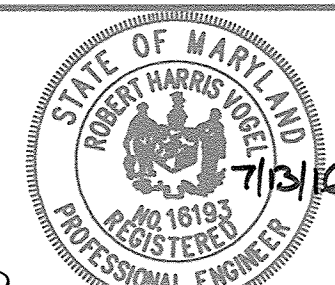
DEPARTMENT OF PUBLIC WORKS  
HOWARD COUNTY, MARYLAND

DEPARTMENT OF PLANNING & ZONING  
HOWARD COUNTY, MARYLAND

*Chris C. Curran* 7/14/16  
CHIEF, BUREAU OF UTILITIES DATE

*John Blanton* 9/13/16  
CHIEF, DEVELOPMENT ENGINEERING DIVISION DATE

**ROBERT H. VOGEL ENGINEERING, INC.**  
ENGINEERS • SURVEYORS • PLANNERS  
8407 MAIN STREET TEL: 410.461.7666  
ELICOTT CITY, MD 21043 FAX: 410.461.8961



PROFESSIONAL CERTIFICATE  
I HEREBY CERTIFY THAT THESE DOCUMENTS WERE PREPARED OR APPROVED BY ME, AND THAT I AM A DULY LICENSED PROFESSIONAL ENGINEER UNDER THE LAWS OF THE STATE OF MARYLAND, LICENSE NO. 16193, EXPIRATION DATE: 08-27-2018  
DRN: KG DES: RVE  
CHK: RHV  
DATE: JULY 2016

BY	NO.	REVISION	DATE
			6/21/18

**FINAL WATER AND SEWER CONSTRUCTION PLAN**  
CONTRACT 24-4940-D  
TAX MAP 47 GRID 19  
6TH ELECTION DISTRICT

**PINEHURST**  
LOTS 1-4 AND OPEN SPACE LOT 5,  
A RESUBDIVISION OF LOT 20, HIGH RIDGE,  
PARCEL: 162 ZONED: R-SC  
HOWARD COUNTY, MARYLAND

SCALE AS SHOWN  
SHEET 1 OF 3

# FINAL WATER AND SEWER CONSTRUCTION PLAN

## PINEHURST

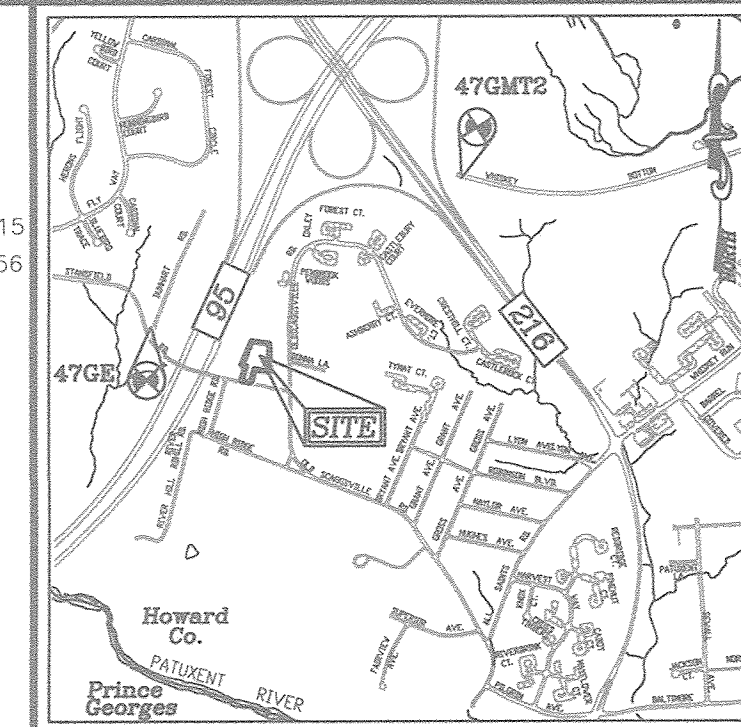
### PARCEL 162 / ZONED:R-SC

## CONTRACT 24-4940-D

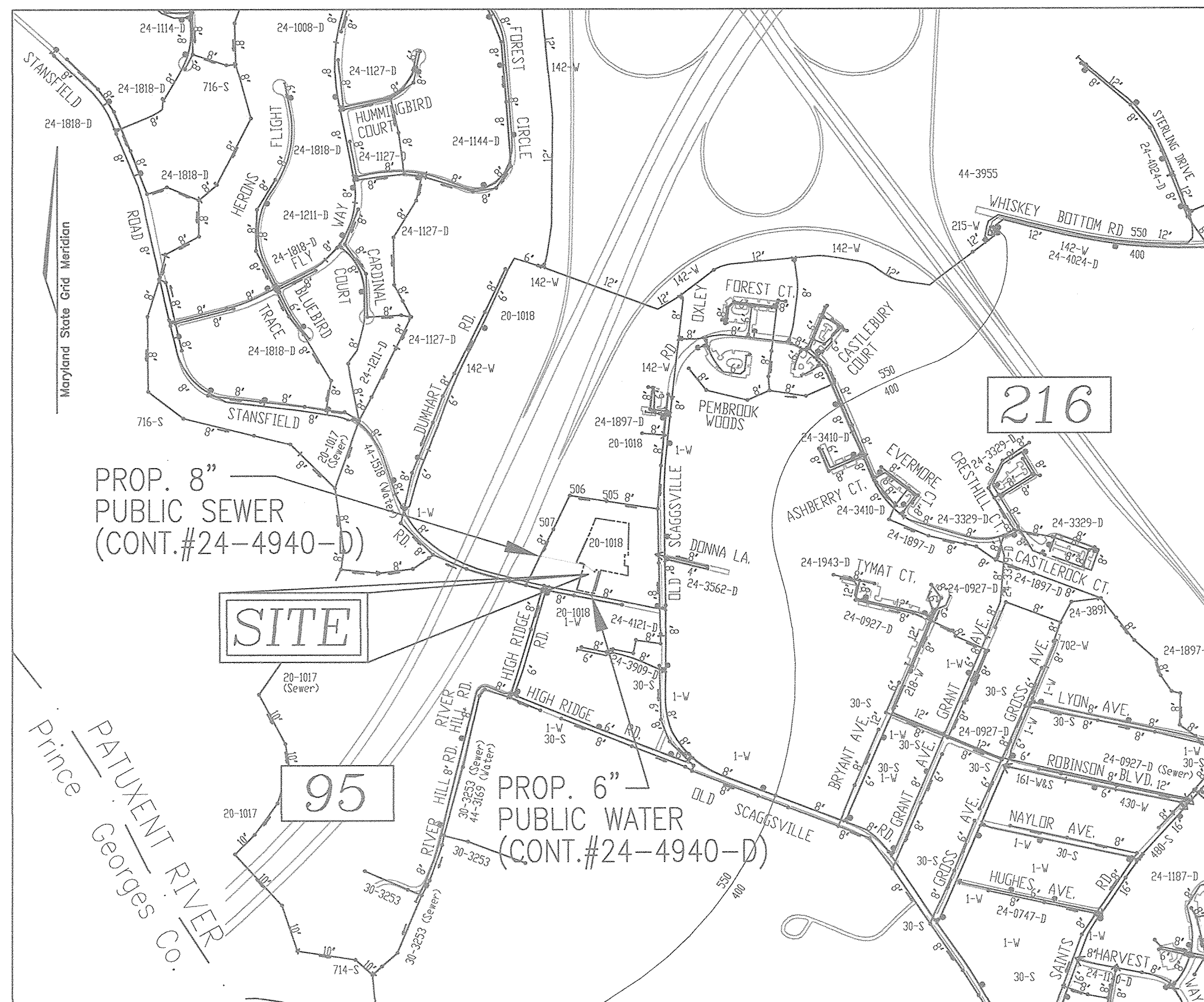
## HOWARD COUNTY, MARYLAND

**BENCHMARKS**

COORDINATES BASED ON NAD 83 MARYLAND COORDINATE SYSTEM AS PROJECTED BY HOWARD COUNTY GEODETIC CONTROL STATIONS 47MT2, 47GE.  
HOWARD COUNTY BENCHMARK  
47GD N 530494.447 E 1350872.301 ELEV. 312.315  
47GE N 529044.964 E 1350854.953 ELEV. 335.756



**VICINITY MAP**  
SCALE: 1" = 2000'  
ADC MAP COORDINATE: 5169 B1



**LOCATION MAP**  
SCALE: 1" = 600'

WATER ZONE: 550  
TEST GRADIENT: 700

TYPE OF BUILDING :	SFD RESIDENTIAL
NO. OF LOTS/PARCELS :	4
NO. OF SINGLE WATER HOUSE CONNECTIONS :	4
NO. OF SINGLE SEWER HOUSE CONNECTIONS :	4 NEW, 1 TO EX. LOT 22
SEWER SHED :	PATUXENT RIVER UPPER
TREATMENT PLANT :	PATUXENT

**PART II - WATER CONTINUED**

- ALL CHANGES IN HORIZONTAL OR VERTICAL DIRECTION OF PVC WATER PIPE SHALL BE MADE WITH STANDARD BENDS, 5-DEGREE SWEEPS OR HIGH DEFLECTION (HD) COUPLINGS. NO BENDING OF THE PIPE OR DEFLECTING OF PVC PIPE JOINTS IS PERMITTED. WHERE HIGH DEFLECTION COUPLINGS OR 5-DEGREE SWEEPS ARE PERMITTED, THE CONTRACTOR SHALL PROVIDE ONE FULL PIPE LENGTH (20-FOOT LONG) ON EITHER SIDE OF THE HIGH DEFLECTION COUPLING OR 5-DEGREE SWEEP. THE CONTRACTOR SHALL USE A VIBRATORY PLATE COMPACTOR OR OTHER APPROVED MEANS TO THOROUGHLY COMPACT THE #57 STONE ON BOTH SIDES OF THE HIGH DEFLECTION COUPLING OR 5-DEGREE SWEEP, TAKING CARE NOT TO USE COMPACTION EQUIPMENT DIRECTLY OVER THE FITTING.  
PVC HIGH DEFLECTION COUPLINGS SHALL BE LIMITED TO A TOTAL DEFLECTION OF 3-DEGREES 1-1/2- DEGREE ON EITHER END OF THE COUPLING), SHALL BE RATED FOR A MINIMUM 200 PSI MEETING THE REQUIREMENTS OF AWWA C900, SHALL HAVE A MINIMUM LAY LENGTH OF 9-INCHES AND SHALL HAVE CENTER STOPS. PVC HIGH DEFLECTION COUPLINGS SHALL BE CERTAINTED PVC HIGH DEFLECTION (HD) STOP COUPLINGS OR EQUAL.  
FIVE DEGREE SWEEPS SHALL BE BELL BY SPIGOT, RATED FOR A MINIMUM 225 PSI, DR18 MEETING THE REQUIREMENTS OF AWWA C900 AND SHALL BE MULTI FITTINGS (IPEX) BLUE BRUTE DR18 OR EQUAL.
- WHEN PVC HIGH DEFLECTION COUPLINGS OR PVC 5-DEGREE SWEEPS ARE USED TO FACILITATE CHANGES IN HORIZONTAL OR VERTICAL ALIGNMENTS OF AWWA C-900 PVC PIPELINES, THE CONTRACTOR SHALL INSTALL DEVICES FOR THE PREVENTION OF OVER-INSERTION OF THE PVC PIPE SPIGOTS OR PLAIN ENDS INTO THE PUSH ON BELL JOINT ON BOTH SIDES OF THE HIGH DEFLECTION COUPLINGS AND 5 DEGREE SWEEPS. BELL STOPS SHALL BE PLACED AT THE PROPER INSERTION LINE FOR THE FITTING. THE BELL STOP SHALL BE MANUFACTURED OF DUCTILE IRON AND INCORPORATE AN EXPANSION RETENTION SPRING TO ALLOW FOR PIPE EXPANSION AND CONTRACTION. THE BELL STOPS SHALL BE SERIES 5000 MEGA-STOP, AS MANUFACTURED BY EBAA IRON INC. OR APPROVED EQUAL.

**PART III - SEWER**

- ALL SEWER MAINS SHALL BE D.I.P. OR P.V.C UNLESS OTHERWISE NOTED.
- ALL MANHOLES SHALL BE 4'-0" INSIDE DIAMETER UNLESS OTHERWISE NOTED.
- FORCE MAINS SHALL BE D.I.P. ONLY.
- MANHOLES SHOWN WITH 12" AND 16" WALLS ARE FOR BRICK MANHOLES ONLY.
- MANHOLES DESIGNATED W.T. IN PLAN AND PROFILE SHALL HAVE WATERTIGHT FRAME AND COVER, STANDARD DETAIL G5.52. WHERE WATERTIGHT MANHOLE FRAMES AND COVERS ARE USED, SET TOP OF FRAME 1'-6" ABOVE FINISHED GRADE UNLESS OTHERWISE NOTED ON THE DRAWINGS.
- HOUSE(S) WITH THE SYMBOL "C.N.S." INDICATES THAT THE CELLAR CANNOT BE SERVED.

**LEGEND**

EXISTING TREELINE	
TREELINE	
EXISTING WATER MAIN	
WATER MAIN	
VALVE	
TEE	
STORM DRAIN	
EXISTING STORM DRAIN	
EXISTING SEWER	
SEWER MANHOLE	
PRIVATE WATER HOUSE CONNECTION	
PUBLIC SEWER	
PRIVATE SEWER HOUSE CONNECTION	

**QUANTITIES**

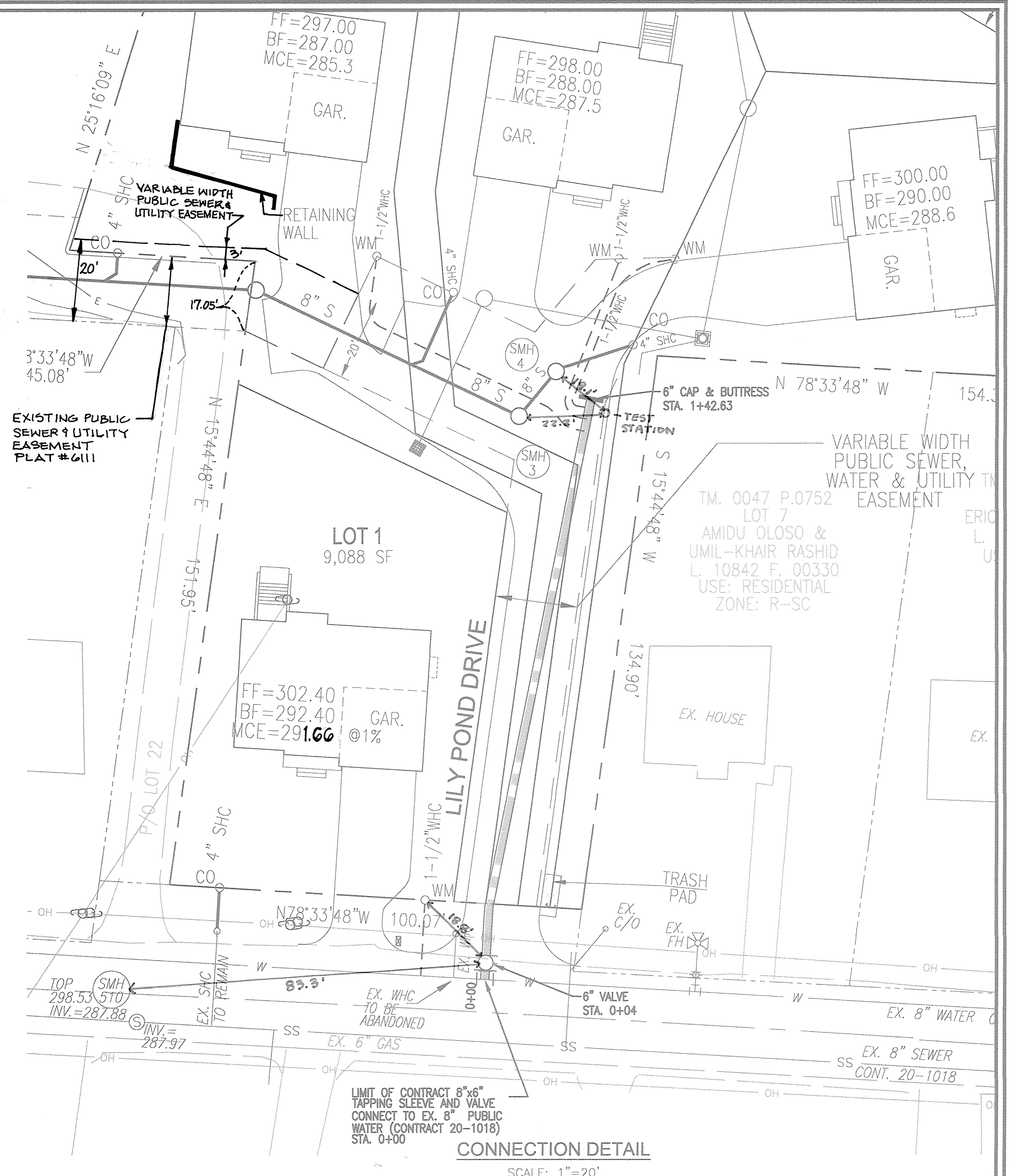
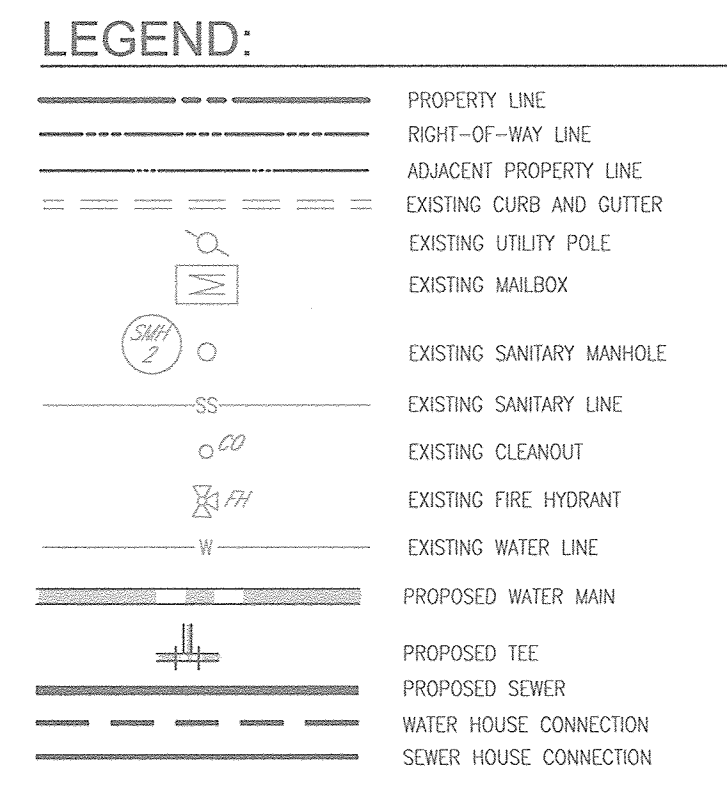
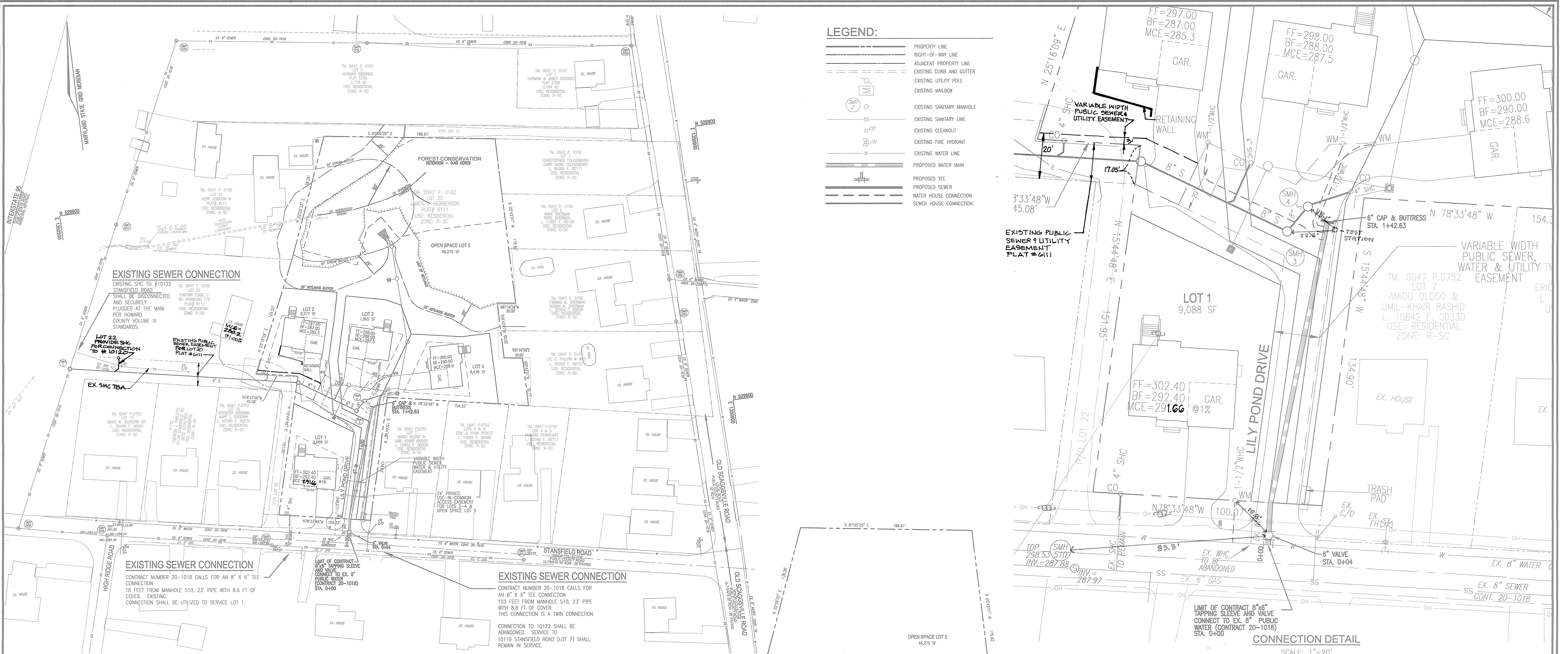
NAME OF UTILITY CONTRACTOR : HTI CONTRACTORS				
SURVEY AND DRAFTING DIVISION AS-BUILT DATE : 6-21-18				
ITEMS	QUANTITIES ESTIMATED	AS-BUILT		
		QUANTITIES	TYPE	MANUFACTURER/SUPPLIER
WATER				
6" WATER (C900)	143 LF	138 LF.	C900 DR-18	NATIONAL PIPE
8" X 6" TS & V	1 EA	1 EA	SS	MAELLER
6" VALVE	1 EA	1 EA	DIP	AMERICAN FLOW CONTROL
6" CAP	1 EA	1 EA	DIP	US PIPE
1" OUTSIDE VAULT	4 EA	4 EA	CONCRETE	PRISM
1 1/2" WHC	181 LF	185 LF.	K SOPPER	CAMBRIDGE-LEE
SEWER				
MANHOLE	4 EA	4 EA	CONCRETE	BACK RIVER PRE-CAST LLC
8" PVC SEWER	334 LF	320 LF.	SDR-35	NATIONAL PIPE / FERGUSON
4" SHC	65 LF	62 LF.	SDR-35	NATIONAL PIPE / FERGUSON

**AS BUILTS**

BY: DFI DATE: 6-21-18

**OWNER**  
JAMES J. HERBERSON  
10122 STANSFIELD RD  
LAUREL, MD 20723  
(410) 480-0023

**DEVELOPER**  
TRINITY HOMES MARYLAND, LLC  
3675 PARK AVE., SUITE 301  
ELICOTT CITY, MD 21043  
(410) 480-0023



**EXISTING SEWER CONNECTION**  
 EXISTING SHC TO #10122 STANSFIELD ROAD  
 SHALL BE DISCONNECTED AND SECURELY PLUGGED AT THE MAIN PER HOWARD COUNTY VOLUME IV STANDARDS.  
 LOT 22 PROVIDE SHC FOR CONNECTION TO #10122

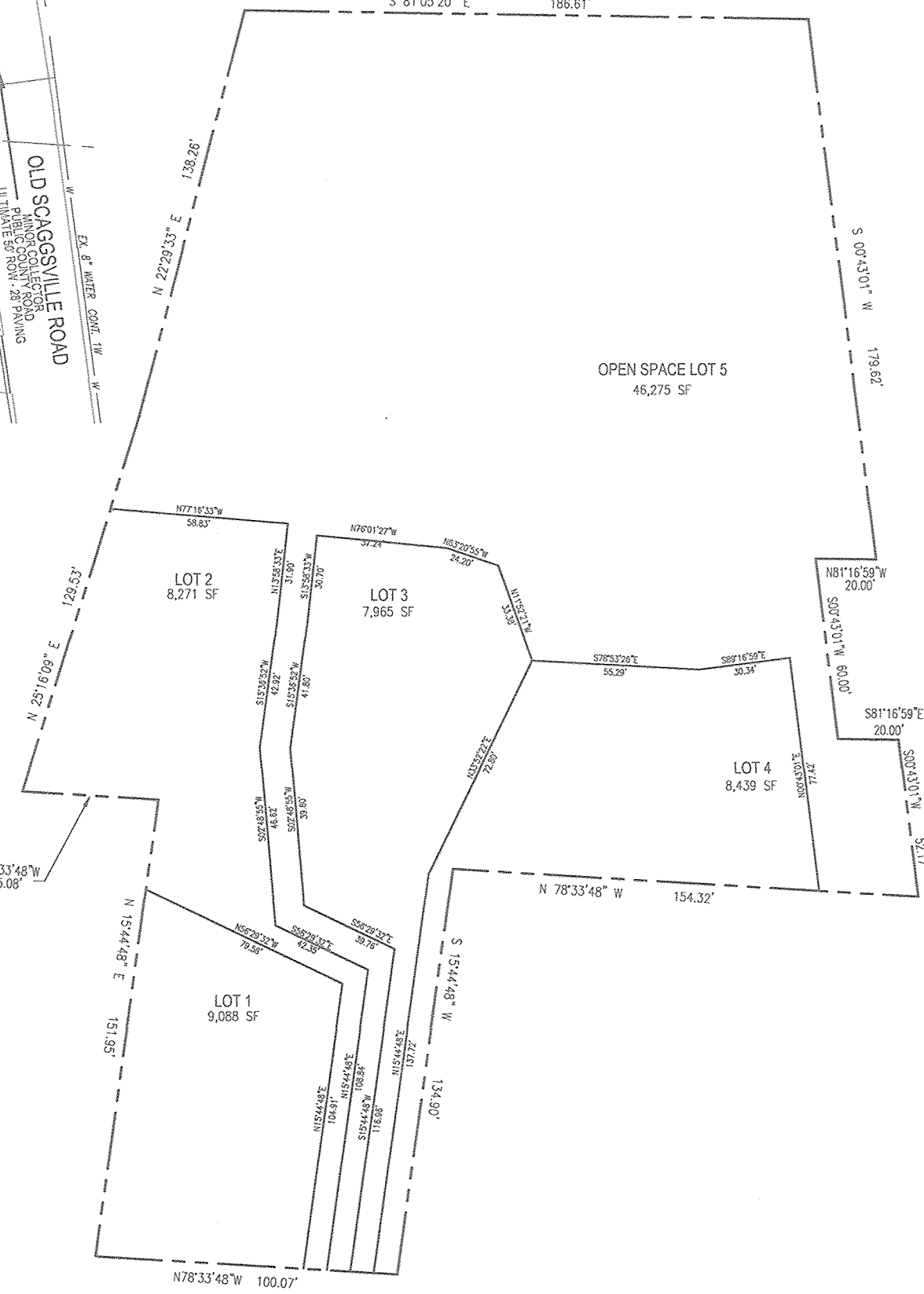
**EXISTING SEWER CONNECTION**  
 CONTRACT NUMBER 20-1018 CALLS FOR AN 8" X 6" TEE CONNECTION 18 FEET FROM MANHOLE 510, 23" PIPE WITH 8.6 FT OF COVER. EXISTING CONNECTION SHALL BE UTILIZED TO SERVICE LOT 1.

**EXISTING SEWER CONNECTION**  
 CONTRACT NUMBER 20-1018 CALLS FOR AN 8" X 6" TEE CONNECTION 103 FEET FROM MANHOLE 510, 23" PIPE WITH 8.8 FT OF COVER. THIS CONNECTION IS A TWIN CONNECTION CONNECTION TO 10122 SHALL BE ABANDONED. SERVICE TO 10116 STANSFIELD ROAD (LOT 7) SHALL REMAIN IN SERVICE.

**LAYOUT SHEET**  
 SCALE: 1"=50'

PUBLIC SERVICE CONNECTION CHART		
PROPERTY	ADDRESS	WATER AND SEWER
EXISTING HOUSE	10122 STANSFIELD ROAD	EX WHC TO BE ABANDONED PROVIDE NEW 1-1/2" CONNECTION FOR LOT 1 EX SHC TO REMAIN FOR LOT 1

**NOTE:**  
 EXISTING HOME ON LOT 20 - 10122 STANSFIELD ROAD WAS RAZED. EXISTING SERVICE CONNECTIONS ALONG STANSFIELD ROAD ARE AS DETAILED HEREON.



**AS BUILTS**  
 BY: DJI DATE: 6-21-18

**OWNER:** JAMES J. HERBERSON  
 10122 STANSFIELD RD  
 LAUREL, MD 20723  
 (410) 480-0023

**DEVELOPER:** TRINITY HOMES MARYLAND, LLC  
 3675 PARK AVE., SUITE 301  
 ELLICOTT CITY, MD 21043  
 (410) 480-0023

DEPARTMENT OF PUBLIC WORKS  
 HOWARD COUNTY, MARYLAND

*Steve C. Green* 7/26/16  
 CHIEF, BUREAU OF UTILITIES DATE

DEPARTMENT OF PLANNING & ZONING  
 HOWARD COUNTY, MARYLAND

*Chad Edmondson* 9-13-16  
 CHIEF, DEVELOPMENT ENGINEERING DIVISION DATE

**ROBERT H. VOGEL, INC.**  
 ENGINEERS • SURVEYORS • PLANNERS  
 8407 MAIN STREET TEL: 410.461.7666  
 ELLICOTT CITY, MD 21043 FAX: 410.461.8991



PROFESSIONAL CERTIFICATE  
 I HEREBY CERTIFY THAT THESE DOCUMENTS WERE PREPARED OR APPROVED BY ME, AND THAT I AM A DULY LICENSED PROFESSIONAL ENGINEER UNDER THE LAWS OF THE STATE OF MARYLAND, LICENSE NO. 16193, EXPIRATION DATE: 09-27-2018

DRN: KG DES: RVC  
 CHK: RHW  
 DATE: JULY 2016

BY	NO.	REVISION	DATE
ASBUILTS			6/21/18

**FINAL WATER AND SEWER CONSTRUCTION PLAN**  
 CONTRACT 24-4940-D

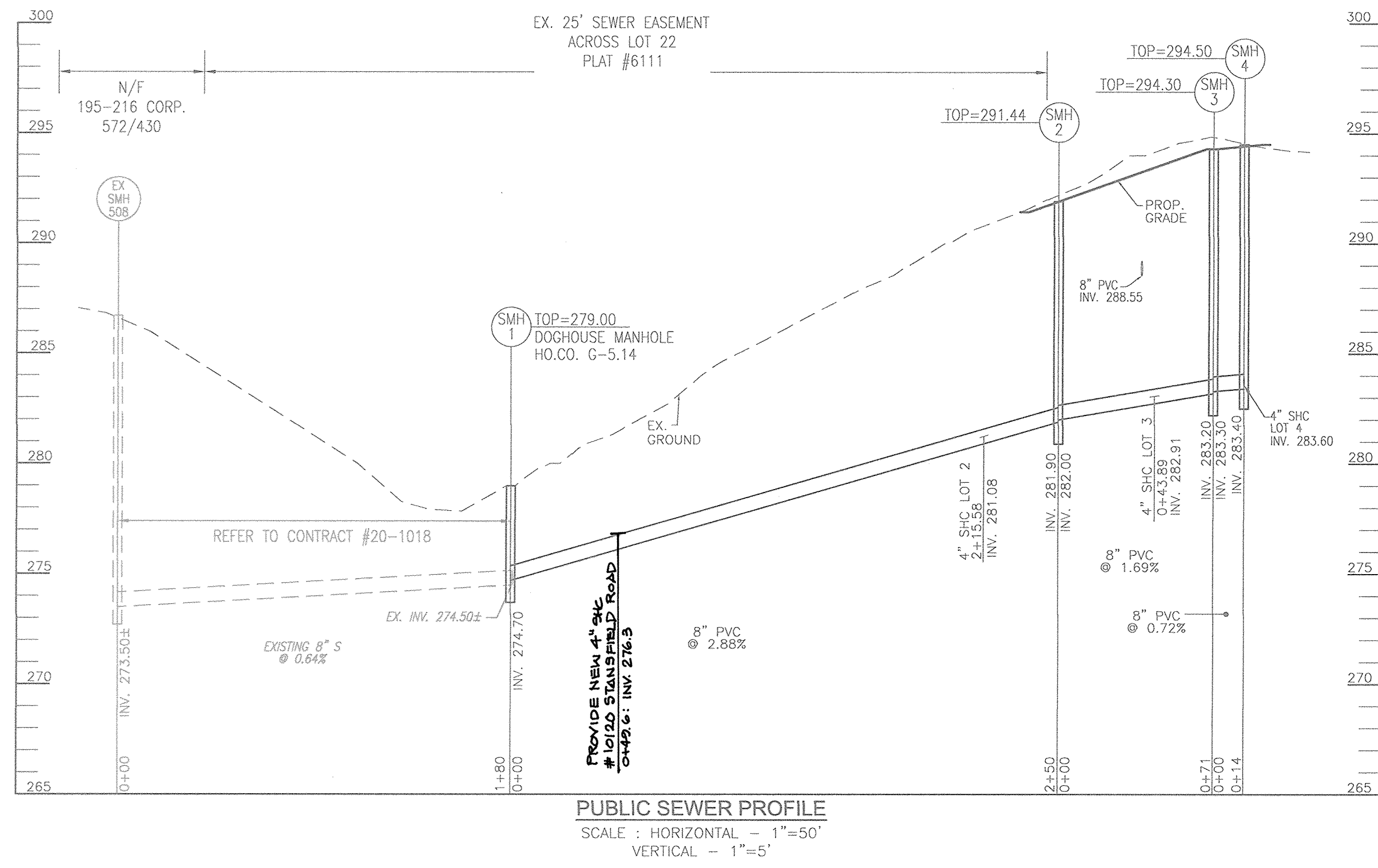
600' SCALE MAP NO. 47 BLOCK NO. 19

**PINEHURST**  
 LOTS 1-4 AND OPEN SPACE LOT 5,  
 A RESUBDIVISION OF LOT 20, HIGH RIDGE,

TAX MAP 47 GRID 19  
 6TH ELECTION DISTRICT

PARCEL: 162 ZONED: R-SC  
 HOWARD COUNTY, MARYLAND

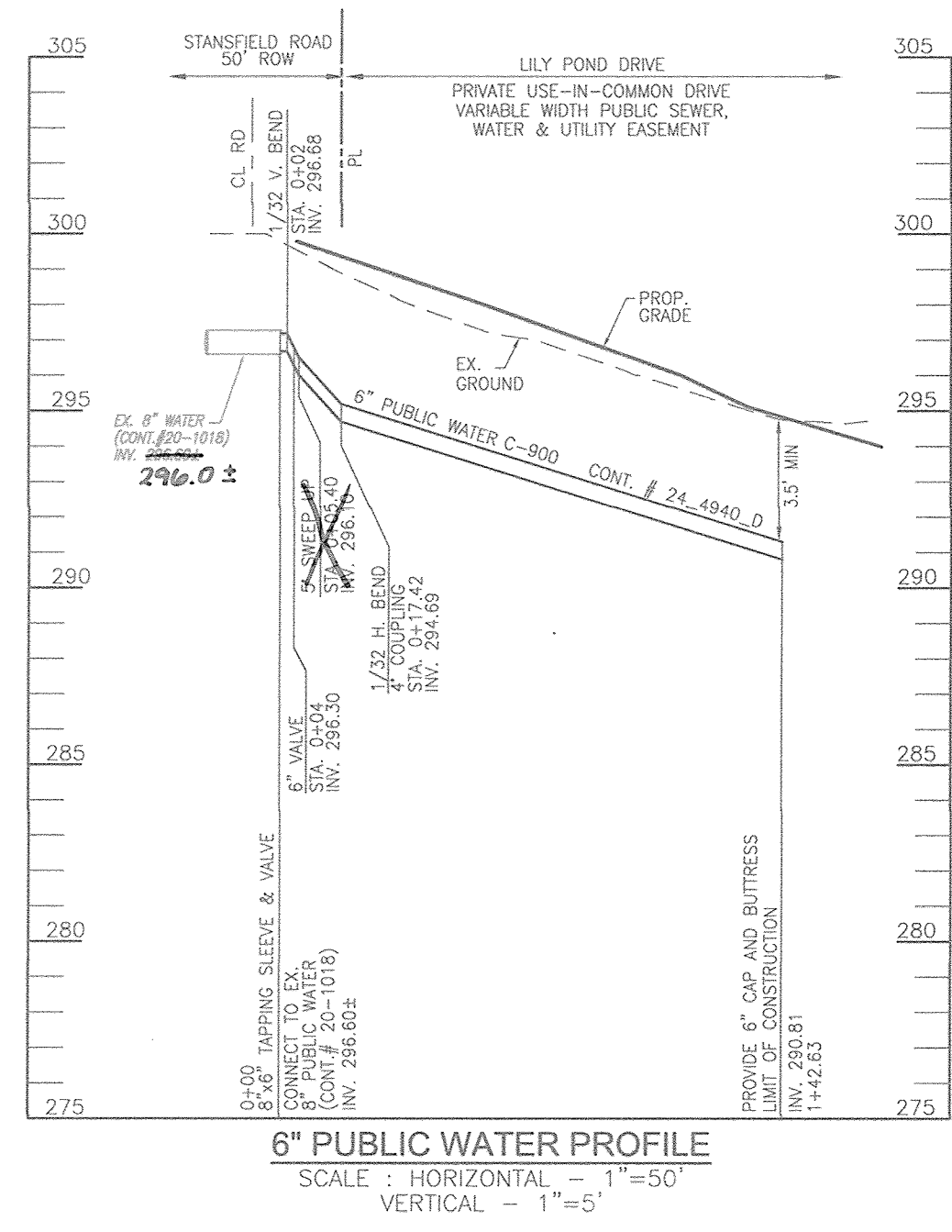
SCALE AS SHOWN  
 SHEET 2 OF 3



MCE CHART								
LOT#	EL @ MAIN	TYPE	DIST. TO ESMT.	EL @ ESMT.	DIST. ESMT. TO HOUSE	SLOPE	EL @ HOUSE	MCE
*1	289.3±	SHC	33'	288.97	66'	1%	289.63	292.15
2	281.08	SHC	7'	281.22	78'	2%	282.78	285.3
3	282.91	SHC	20'	283.31	81'	2%	284.93	287.5
4	283.60	SHC	20'	284.00'	105'	2%	286.10	288.6
EX. 22	276.3	SHC	15'	274.6	110'	1%	277.7	282.2

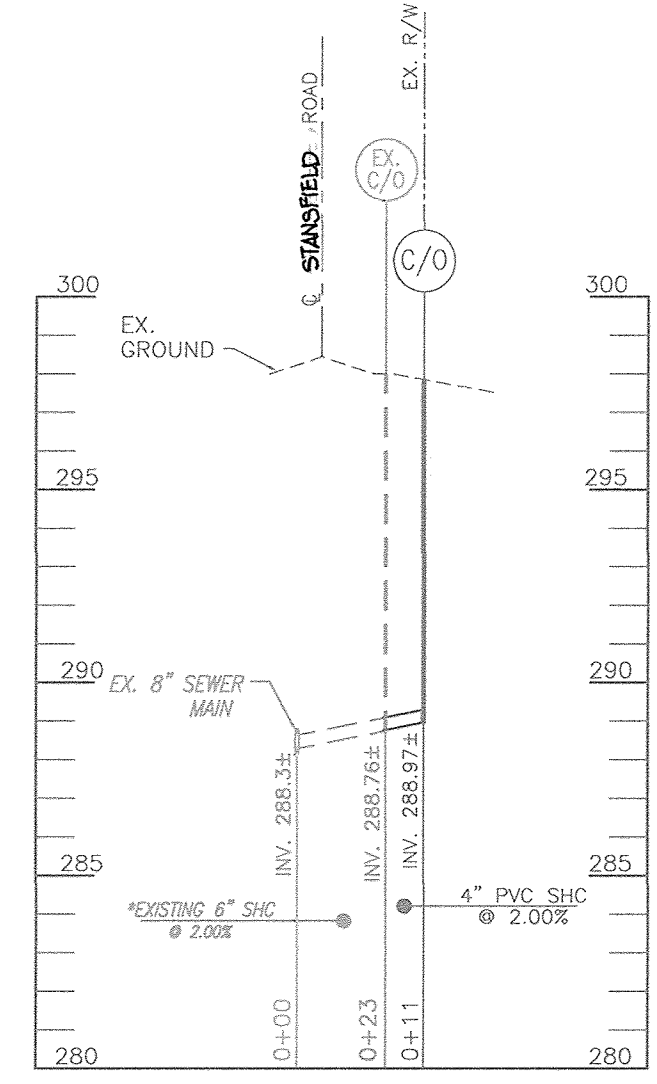
\*CONTRACT NUMBER 20-1018 CALLS FOR AN 8" X 6" TEE CONNECTION 18 FEET FROM MANHOLE 510, 23" PIPE WITH 8.6 FT OF COVER. EXISTING CONNECTION SHALL BE UTILIZED TO SERVICE LOT 1.

SEWER HOUSE CONNECTION AS-BUILT LOCATION TABLE			
LOT #	ADDRESS	LOCATION DIMENSION 1	LOCATION DIMENSION 2
LOT 1	10122 STANSFIELD ROAD	SMH 510 - 37.1'	WHC LOT 1 - 50.8'
LOT 2	10109 LILY POND DRIVE	SMH 2 - 35.7'	WHC LOT 2 - 62.8'
LOT 3	10110 LILY POND DRIVE	SMH 4 - 9.9'	SMH 3 - 35.6'
LOT 4	10106 LILY POND DRIVE	SMH 4 - 21.9'	SMH 3 - 34.7'
EX. LOT 22	10120 STANSFIELD ROAD	SMH 1 - 34.1'	HOUSE CORNER - 113.4'



WATER HOUSE CONNECTION AS-BUILT LOCATION TABLE			
LOT #	ADDRESS	LOCATION DIMENSION 1	LOCATION DIMENSION 2
LOT 1	10122 STANSFIELD ROAD	SMH 510 - 75.6'	6" VALVE - 19.6'
LOT 2	10109 LILY POND DRIVE	SMH 2 - 30.3'	SMH 4 - 31.1'
LOT 3	10110 LILY POND DRIVE	SMH 3 - 45.0'	SMH 4 - 30.2'
LOT 4	10106 LILY POND DRIVE	SMH 3 - 53.0'	SMH 4 - 38.0'

WATER MAIN LOCATION CHART			
WL STA.	APPURTENANCE	NORTHING	EASTING
WL STA. 0+00	CONNECT TO EX. 8" PUBLIC WATER	551004.29	1376014.52
WL STA. 0+02	1/32 VERTICAL BEND		
WL STA. 0+04	6" VALVE	529516.00	1350465.84
WL STA. 0+05.40	5" SWEEP UP		
WL STA. 0+17.42	1/32 HORIZONTAL BEND & 5" SWEEP UP		
WL STA. 0+69.38	1" COUPLING DOWN		
WL STA. 1+46.77	6" CAP AND BUTTRESS	529647.37	1350509.56



LOT 1 SEWER HOUSE CONNECTION PROFILE  
SCALE: HORIZONTAL - 1"=50'  
VERTICAL - 1"=5'

\*EXISTING SEWER CONNECTION NOTE  
CONTRACTOR TO VERIFY EXISTING HORIZONTAL AND VERTICAL LOCATIONS OF EXISTING LOT 1 SEWER PRIOR TO FUTURE CONNECTION  
CONTRACT NUMBER 20-1018 CALLS FOR AN 8" X 6" TEE CONNECTION 18 FEET FROM MANHOLE 510, 23" PIPE WITH 8.6 FT OF COVER. EXISTING CONNECTION SHALL BE UTILIZED TO SERVICE LOT 1.

**AS BUILTS**  
BY: DFI DATE: 6-21-18

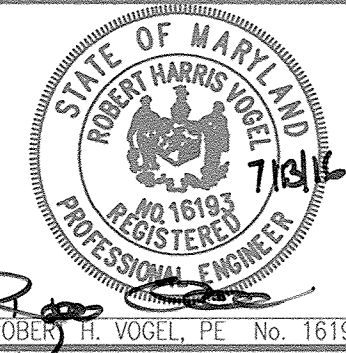
**OWNER**  
JAMES J. HERBERSON  
10122 STANSFIELD RD  
LAUREL, MD 20723  
(410) 480-0023

**DEVELOPER**  
TRINITY HOMES MARYLAND, LLC  
3675 PARK AVE., SUITE 301  
ELLCOTT CITY, MD 21043  
(410) 480-0023

DEPARTMENT OF PUBLIC WORKS  
HOWARD COUNTY, MARYLAND  
  
DATE: 7-25-18  
CHIEF, BUREAU OF UTILITIES

DEPARTMENT OF PLANNING & ZONING  
HOWARD COUNTY, MARYLAND  
  
DATE: 9-13-18  
CHIEF, DEVELOPMENT ENGINEERING DIVISION

**ROBERT H. VOGEL ENGINEERING, INC.**  
ENGINEERS • SURVEYORS • PLANNERS  
2407 MAIN STREET  
ELLCOTT CITY, MD 21043  
TEL: 410.461.7666  
FAX: 410.461.8961



PROFESSIONAL CERTIFICATE  
I HEREBY CERTIFY THAT THESE DOCUMENTS WERE PREPARED OR APPROVED BY ME, AND THAT I AM A FULLY LICENSED PROFESSIONAL ENGINEER UNDER THE LAWS OF THE STATE OF MARYLAND, LICENSE NO. 16193 EXPIRATION DATE: 09-27-2018

DRN: KG DES: RVE  
CHK: RHW  
DATE: JULY 2016

BY	NO.	REVISION	DATE
		ASBUILTS	6/21/18

**FINAL WATER AND SEWER CONSTRUCTION PLAN**  
CONTRACT 24-4940-D

TAX MAP 47 GRID 19  
6TH ELECTION DISTRICT

**PINEHURST**  
LOTS 1-4 AND OPEN SPACE LOT 5,  
A RESUBDIVISION OF LOT 20, HIGH RIDGE,

TAX MAP 47 GRID 19  
6TH ELECTION DISTRICT

PARCEL: 162 ZONED: R-SC  
HOWARD COUNTY, MARYLAND

SCALE AS SHOWN

SHEET 3 OF 3