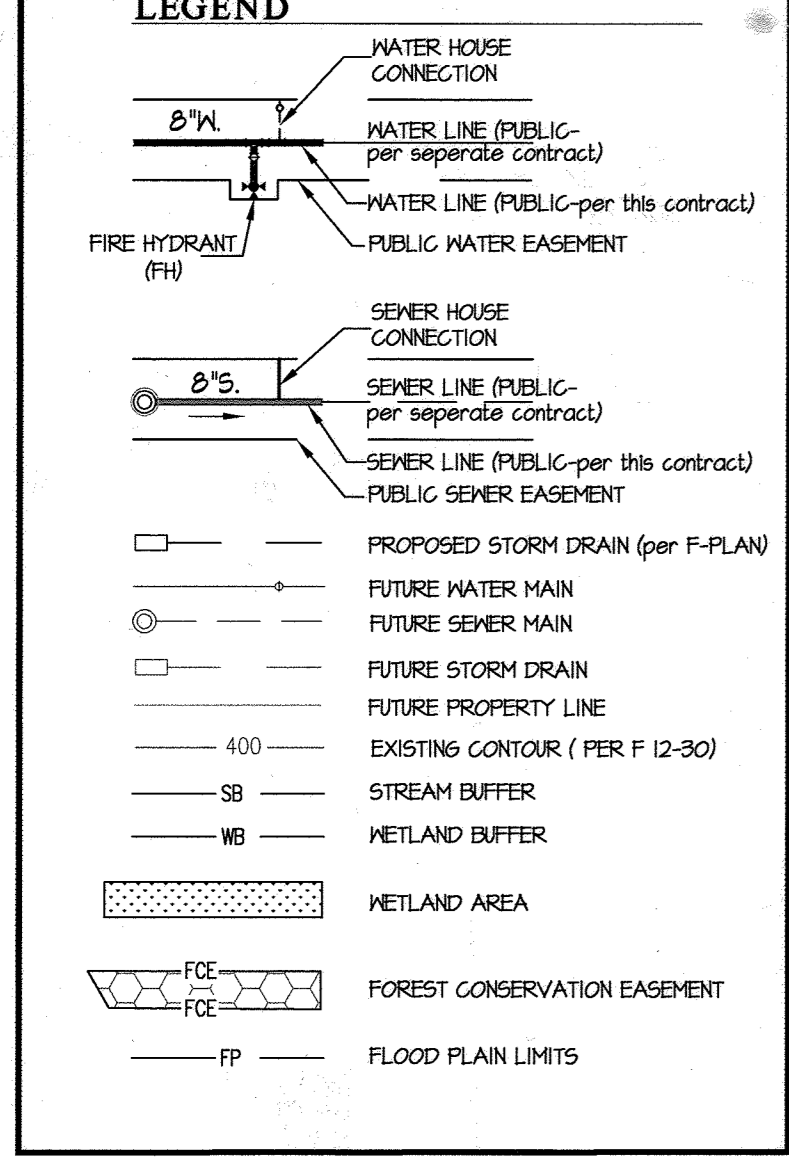


QUANTITIES				
ITEMS	QUANTITIES ESTIMATED	AS-BUILT		
		QUANTITIES	TYPE	MANUFACTURER/SUPPLIER
6" WATER MAIN C400 DR18 PVC	741 LF	742 LF	C-900	J.M. EAGLE
8" WATER MAIN C400 DR18 PVC	1310 LF	1312 LF	C-900	J.M. EAGLE
16" WATER MAIN C405 DR18 PVC	800 LF	844 LF	C-905	J.M. EAGLE
8" SEWER MAIN	490 LF	490 LF	RIC-SDR35	J.M. EAGLE
4" MANHOLE	5	6 EA		BACK RIVER
12" x 12" T.S.4V.	1 EA	1 EA		STAR
16" x 8" T.S.4V.	1 EA	1 EA		STAR
16" x 8" T.	2 EA	2 EA		STAR
16" x 8" CROSS	1 EA	1 EA		STAR
16" CAP	1 EA	1 EA		STAR
8" x 8" T.	5 EA	5 EA		STAR
16" x 6" F.H.T.	2 EA	2 EA		STAR
8" x 6" F.H.T.	4 EA	4 EA		STAR
16" 1/4 H.B.	3 EA	3 EA		STAR
16" 1/2 H.B.	2 EA	2 EA		STAR
8" 1/2 H.B.	5 EA	5 EA		STAR
16" 1/4 V.B.	5 EA	5 EA		STAR
8" 1/4 V.B.	3 EA	3 EA		STAR
8" 1/2 V.B.	4 EA	4 EA		STAR
16" x 12" REDUCER	1 EA	1 EA		STAR
8" x 6" REDUCER	1 EA	1 EA		STAR
12" V.	1 EA	1 EA		STAR
8" V.	4 EA	4 EA		STAR
6" V.	7 EA	7 EA		STAR
8" CAP	4 EA	1 EA		STAR
8" 1.0" HDC	2 EA	2 EA		NORTH AMERICAN PIPE
8" 2.0" HDC	3 EA	3 EA		NORTH AMERICAN PIPE
8" 2.5" HDC	1 EA	3 EA		NORTH AMERICAN PIPE
8" x 6" T.	1 EA	1 EA		STAR
8" D.I.P.	6 LF	6 LF	DIP	US PIPE

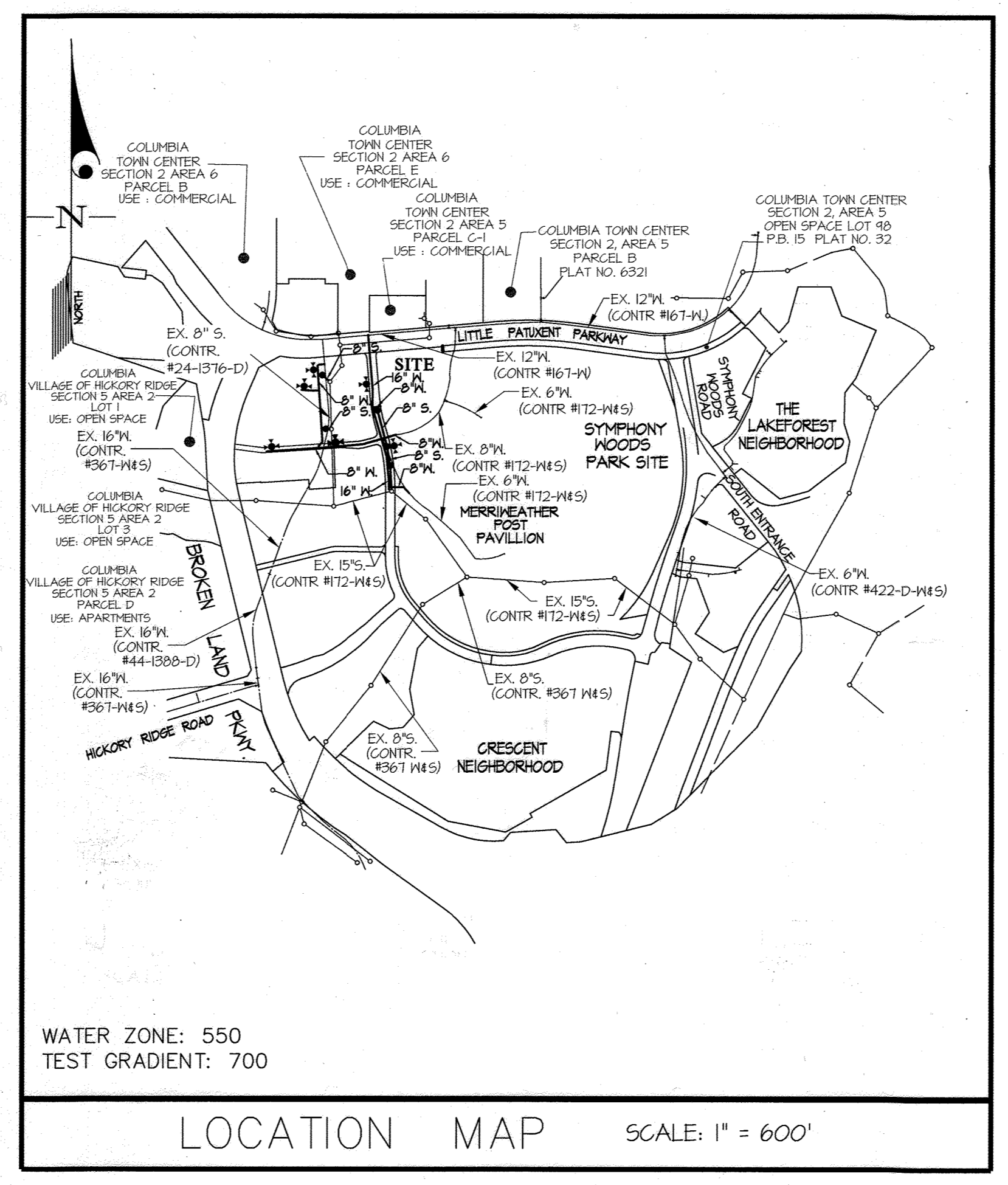
NAME OF UTILITY CONTRACTOR: HIGHLAND TUBE, INC. / RELIABLE

SURVEY AND DRAFTING DIV. CHECKBOX: AS-BUILT DATE:

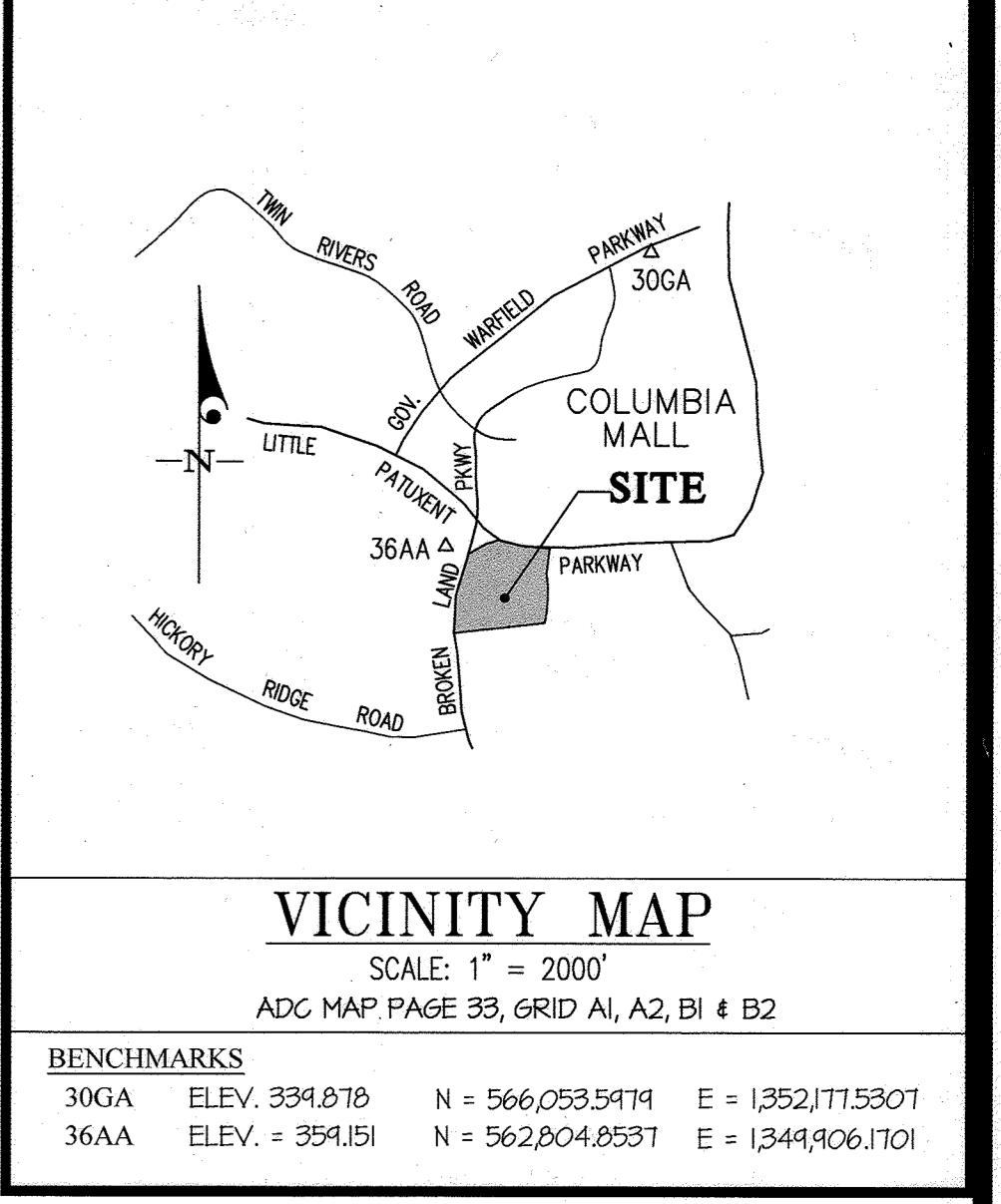


SHEET INDEX

- COVER SHEET
- WATER & SEWER EXTENSION PLAN
- WATER ABANDONMENT/REMOVAL PLAN
- WATER & SEWER EXTENSION PROFILES
- WATER & SEWER EXTENSION PROFILES



TYPE OF BUILDING	COMMERCIAL
NUMBER OF LOTS	4 BULK PARCELS
NUMBER OF S.H.C.'s	3
NUMBER OF W.H.C.'s	4
AREA OF COMMERCIAL LOT/PARCEL	
SEWER SHED	MIDDLE PATUXENT
PUMPING STATION	LITTLE PATUXENT RECLAMATION PLANT



- GENERAL NOTES:**
- Approximate locations of existing mains are shown. The contractor shall take all necessary precautions to protect existing mains and services and maintains uninterrupted service. Any damage incurred shall be repaired immediately to the satisfaction of the Engineer at the contractor's expense.
 - Topographic field surveys were performed on March, 2003 by McKenzie SNYDER.
 - Horizontal and Vertical Survey Controls:
The coordinates shown on the drawings are based on Maryland State Reference System NAD 83/91 as projected by Howard County Geodetic Control Stations No. 37A4 and No. 315A.
All vertical controls are based on NAVD 88. Vertical controls provided on the drawings are (Engineering / Survey firm shall provide description of vertical control points, i.e., iron bars, cross cuts on concrete structures, etc).
 - All pipe elevations shown are invert elevations unless otherwise noted on the plans.
 - Clear all utilities by a minimum of 12 inches. Clear all poles by 5'-0" minimum or tunnel as required unless otherwise noted. The owner has contacted the utility companies and has made arrangements for bracing of poles as shown on the drawings. In the event the contractor's work requires the bracing of additional poles, any cost incurred by the owner for the bracing of additional poles or damages shall be deducted from monies owed the contractor. The contractor shall coordinate with the utility companies to schedule the bracing of the poles.
 - For details not shown on the drawing, and for materials and construction methods, use Howard County Design Manual, Volume IV, Standard Specifications and Details For Construction (Latest Edition). The contractor shall have a copy of Volume IV on the job.
 - Where test pits have been made on existing utilities, they are noted by the symbol \oplus at the locations of the test pits. A note or notes containing the results of the test pit or pits is included on the drawings. Existing utilities in the vicinity of the proposed work for which test pits have not been dug shall be located by the contractor two weeks in advance of construction operations at his own expense.
 - The contractor shall notify the following utility companies or agencies at least five working days before starting work shown on these plans:
AT&T.....1-800-252-1133
BSE (Contractor Service).....410-621-8713
BSE (Emergency).....410-625-0123
Bureau of Utilities.....410-313-4400
Colonial Pipeline Co.....410-745-1340
Miss Utility.....1-800-251-7111
State Highway Administration.....410-538-5533
Verizon.....1-800-743-0033
 - Trees and shrubs are to be protected from damage to the maximum extent. Trees and shrubs located within the construction strip are not to be removed or damaged by the contractor.
 - The contractor shall remove trees, stumps and roots along the line of excavation. Payment for such removal shall be included in the unit price bid for construction of the main.
 - The contractor shall notify the Bureau of Highways, Howard County, at (410)-313-7450 at least five working days before open cutting or boring/jacking of any County roads for laying water/sewer mains or house connections. The approval of these drawings will constitute compliance with DPM requirements per Section 18.114(a) of the Howard County Code.

DOWNTOWN COLUMBIA
CRESCENT NEIGHBORHOOD-PHASE 1
CONTRACT No. 24-4928-D
PARCELS A-1 THRU A-3, E, NON-BUILDABLE
BULK PARCEL L, OPEN SPACE LOTS 1, 8 & 9
AND MERRIWEATHER-SYMPHONY WOODS
NEIGHBORHOOD OPEN SPACE LOT 1
HOWARD COUNTY, MARYLAND
DEPARTMENT OF PUBLIC WORKS

SEDIMENT CONTROL MEASURES WILL BE IMPLEMENTED IN ACCORDANCE WITH SECTION 308 OF THE SPECIFICATIONS AND WITH ROAD DRAWINGS F 15-04B; FOR SEDIMENT AND EROSION CONTROL.

REVIEWED FOR HOWARD SOIL CONSERVATION DISTRICT AND MEETS TECHNICAL REQUIREMENT.

SIGNATURE: *[Signature]* DATE: _____
U.S.D.A. NATURAL RESOURCES CONSERVATION SERVICE

THIS DEVELOPMENT PLAN IS APPROVED FOR SOIL EROSION AND SEDIMENT CONTROL BY THE HOWARD SOIL CONSERVATION DISTRICT.

APPROVED: *[Signature]* 12/23/15
HOWARD S.C.D. DATE

DEPARTMENT OF PUBLIC WORKS
HOWARD COUNTY, MARYLAND

DATE: 12-31-15
CHIEF, BUREAU OF UTILITIES

DEPARTMENT OF PLANNING AND ZONING
HOWARD COUNTY, MARYLAND

DATE: 12-31-15
CHIEF, DEVELOPMENT ENGINEERING DIVISION

GLWGUTSCHICK LITTLE & WEBER, P.A.
CIVIL ENGINEERS, LAND SURVEYORS, LAND PLANNERS, LANDSCAPE ARCHITECTS
3909 NATIONAL DRIVE - SUITE 250 - BURTONSVILLE OFFICE PARK
BURTONSVILLE, MARYLAND 20886
TEL: 301-421-4024 BALT: 410-880-1820 DC/WA: 301-989-2524 FAX: 301-421-4186

DATE NOV., 2015
G.L.W. No. 11071
PROFESSIONAL CERTIFICATION: I HEREBY CERTIFY THAT THESE PLANS WERE PREPARED OR APPROVED BY ME AND THAT I AM A DULY LICENSED PROFESSIONAL ENGINEER UNDER THE LAWS OF THE STATE OF MARYLAND, LICENSE NO. 12975
EXP. DATE: MAY 28, 2016

DATE NOV., 2015
G.L.W. No. 11071
PROFESSIONAL CERTIFICATION: I HEREBY CERTIFY THAT THESE PLANS WERE PREPARED OR APPROVED BY ME AND THAT I AM A DULY LICENSED PROFESSIONAL ENGINEER UNDER THE LAWS OF THE STATE OF MARYLAND, LICENSE NO. 12975
EXP. DATE: MAY 28, 2016

BY	NO	REVISION	DATE
KCL	1	AS-BUILTS	1/2017
3+	2	Add 6" W.H.C. to Garage	5-17-10

COVER SHEET

600' SCALE MAP NO. 36 & 39 BLOCK NO. 01

DOWNTOWN COLUMBIA
CRESCENT NEIGHBORHOOD
CONTRACT No. 24-4928-D
PARCELS A-1 THRU A-3, E, NON-BUILDABLE BULK PARCEL L,
OPEN SPACE LOTS 1, 8 & 9 AND MERRIWEATHER-SYMPHONY
WOODS NEIGHBORHOOD OPEN SPACE LOT 1
HOWARD COUNTY, MARYLAND
ELECTION DISTRICT No. 5

SCALE AS SHOWN
SHEET 1 OF 5

PREPARED FOR:
THE HOWARD HUGHES CORP.
10480 LITTLE PATUXENT PARKWAY
SUITE 400
COLUMBIA, MARYLAND 21044
ATTN: BOB JENKINS
410-964-5443

L: CADD DRAWINGS (1) OF 1 PLANS BY G.L.W. Weber & Sewer/FINAL PHASE-IA & 1811 DTD: 12/15/15. LAST SAVED: 12/17/2015 2:59 PM. PLOTTED BY: Joy H. Hinton

FITTING CHART			
STATION	FITTING	NAD 83/91 COORDINATES	
WATER MAIN 'A'			
0+00	16" x 16" T.	N 562171.9448	E 1350621.3828
2+19	16" x 6" F.H.T.	N 562460.0533	E 1350640.4064
2+71	16" x 1/4" H.B.	N 562394.8402	E 1350645.6374
3+59	16" x 1/2" H.B.	N 562320.1702	E 1350644.8710
3+72	16" x 8" T.	N 562306.7841	E 1350647.4291
3+98	16" x 1/4" H.B.	N 562281.9469	E 1350652.1203
5+39	16" x 8" CROSS	N 562146.8374	E 1350641.9067
5+93	16" x 6" F.H.T.	N 562094.8564	E 1350707.2083
6+31	16" x 1/2" H.B.	N 562091.9018	E 1350718.0867
7+56	16" x 1/4" H.B.	N 561933.4863	E 1350729.3054
7+91	16" x 8" T.	N 561848.9488	E 1350729.2790
8+24	16" CAP	N 561865.8295	E 1350729.3114

WATER MAIN 'B'			
0+00	16" x 8" T.	N 562141.8891	E 1350689.2008
0+49	8" x 1/2" H.B.	N 562191.0224	E 1350697.4144
2+49	8" x 6" F.H.T.	N 562105.5205	E 1350447.6287
3+30	8" x 8" T.	N 562099.1591	E 1350367.0867
5+76	8" x 8" T.	N 562083.3274	E 1350121.4839
5+83	8" x 6" F.H.T.	N 562082.8374	E 1350114.2883
5+98	8" CAP	N 562081.8550	E 1350099.3205

WATER MAIN 'C'			
0+00	16" x 8" T.	N 562528.9334	E 1350395.8842
0+31	8" x 1/2" H.B.	N 562528.8724	E 1350365.2013
0+40	8" x 1/2" H.B.	N 562520.1749	E 1350359.3594
0+48	8" x 6" F.H.T.	N 562512.0622	E 1350359.8968
0+60	8" x 8" T.	N 562500.1632	E 1350360.6483
1+66	8" x 8" T.	N 562394.1211	E 1350367.4264
3+23	8" x 8" T.	N 562236.9575	E 1350378.2966
4+30	8" x 1/2" H.B.	N 562150.9417	E 1350385.3845
4+59	8" x 1/2" H.B.	N 562104.2927	E 1350366.4492
4+68	8" x 8" T.	N 562099.1609	E 1350367.0866

WATER MAIN 'D'			
0+00	8" x 8" T.	N 562394.1211	E 1350367.4264
0+79	8" x 6" F.H.T.	N 562396.9554	E 1350288.8201
0+87	8" CAP	N 562397.5794	E 1350281.3489

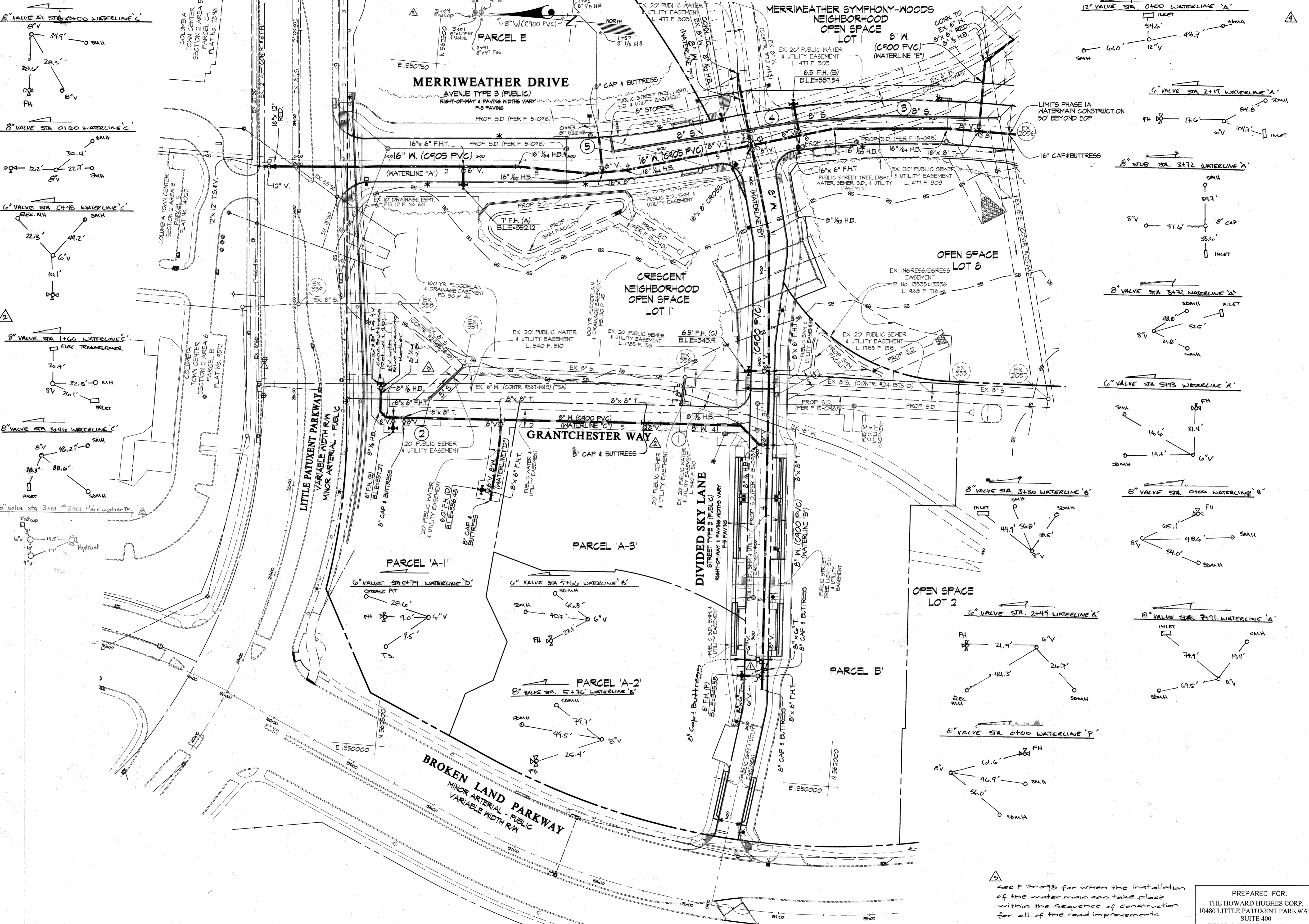
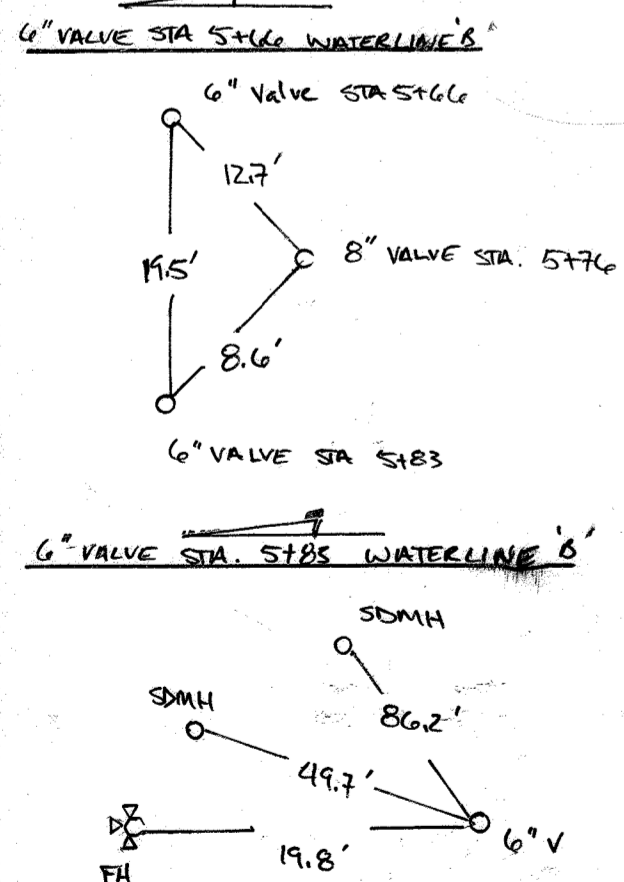
WATER MAIN 'E'			
0+00	16" x 6" T.	N 561848.9488	E 1350729.3114
0+76	8" x 1/2" H.B.	N 561848.9488	E 1350805.1598

WATER MAIN 'F'			
0+00	16" x 8" T.	N 562146.8374	E 1350691.9067
0+76	8" x 1/2" H.B.	N 562168.4243	E 1350785.2386

WATER MAIN 'G'			
0+00	8" x 6" T.	N 562084.0071	E 1350131.4667

SEWER MH CHART		
MH	NAD 83/91 COORDINATES	
1	N 562009.2361	E 1350736.4017
2	N 562107.8583	E 1350719.8591
3	N 562247.4367	E 1350671.3574
4	N 562198.1955	E 1350402.8238
5	N 562473.8878	E 1350384.5043

FIRE HYDRANT CHART		
FH	NAD 83/91 COORDINATES	
A	N 562458.3138	E 1350620.4822
B	N 562104.7981	E 1350740.9798
C	N 562127.7222	E 1350445.6219
D	N 562511.4167	E 1350348.2725
E	N 562408.0871	E 1350284.1443
F	N 562105.4798	E 1350112.7135



FOR WATER AND SEWER PROFILES SEE SHEETS 4 & 5 OF 5

See P 15-093 for when the installation of the water main can take place within the sequence of construction for all of the road improvements.

PREPARED FOR:
THE HOWARD HUGHES CORP.
10480 LITTLE PATUXENT PARKWAY
SUITE 400
COLUMBIA, MARYLAND 21044
ATTN: BOB JENKINS
410-964-5443

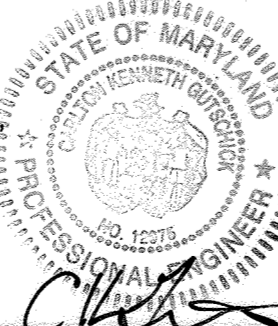
DEPARTMENT OF PUBLIC WORKS
HOWARD COUNTY, MARYLAND
12/15/15
DATE

DEPARTMENT OF PLANNING AND ZONING
HOWARD COUNTY, MARYLAND
12/15/15
DATE

GLWGUTSCHICK LITTLE & WEBER, P.A.
CIVIL ENGINEERS, LAND SURVEYORS, LAND PLANNERS, LANDSCAPE ARCHITECTS
3909 NATIONAL DRIVE - SUITE 250 - BURTONSVILLE OFFICE PARK
BURTONSVILLE, MARYLAND 20886
TEL: 301-421-4024 FAX: 301-421-4186

DATE NOV., 2015
G.L.W. No. 11071

PROFESSIONAL CERTIFICATION
I HEREBY CERTIFY THAT THESE PLANS WERE PREPARED OR APPROVED BY ME AND THAT I AM A DULY LICENSED PROFESSIONAL ENGINEER UNDER THE LAWS OF THE STATE OF MARYLAND, LICENSE NO. 12975
EXP. DATE: MAY 26, 2016



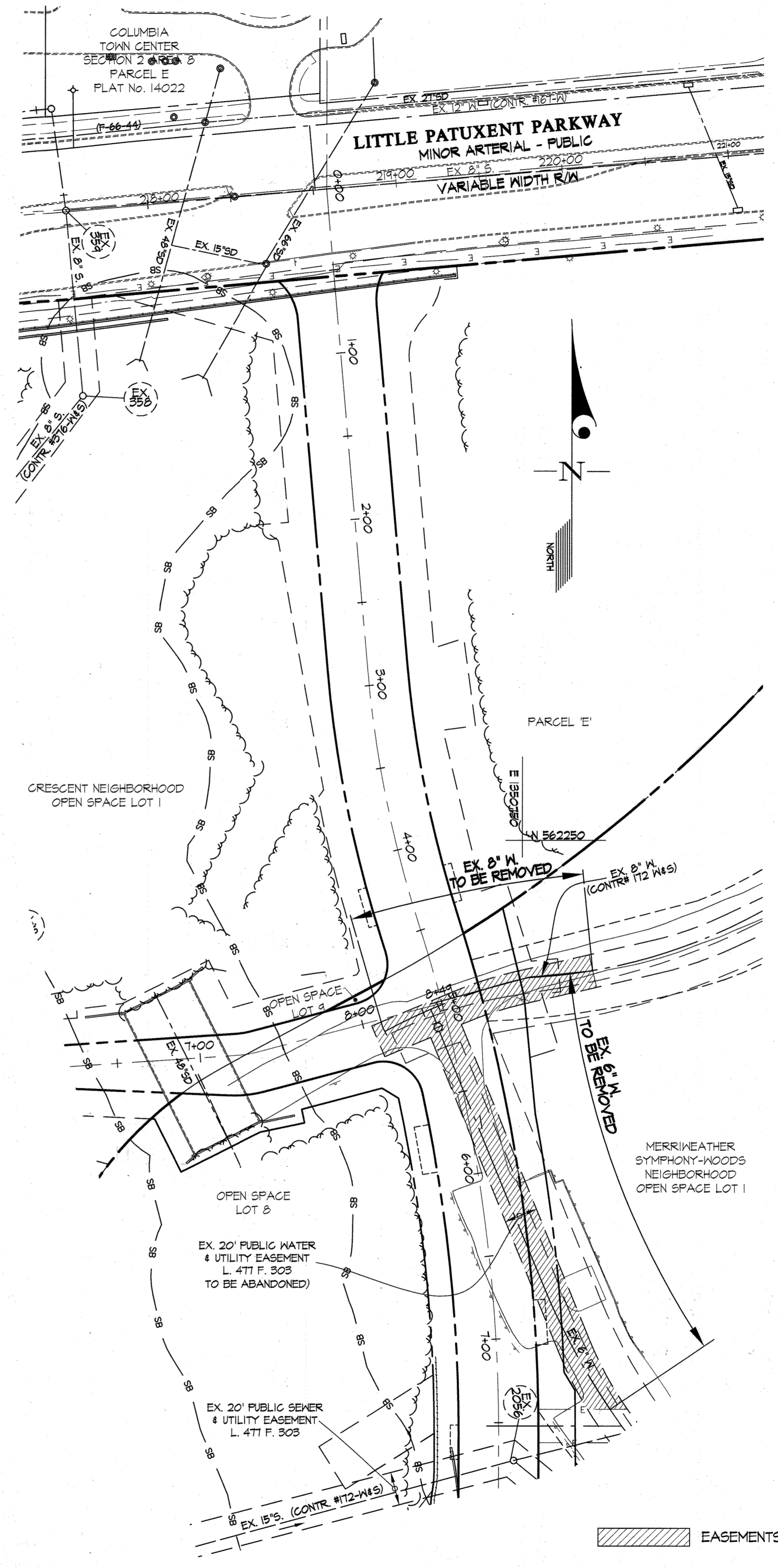
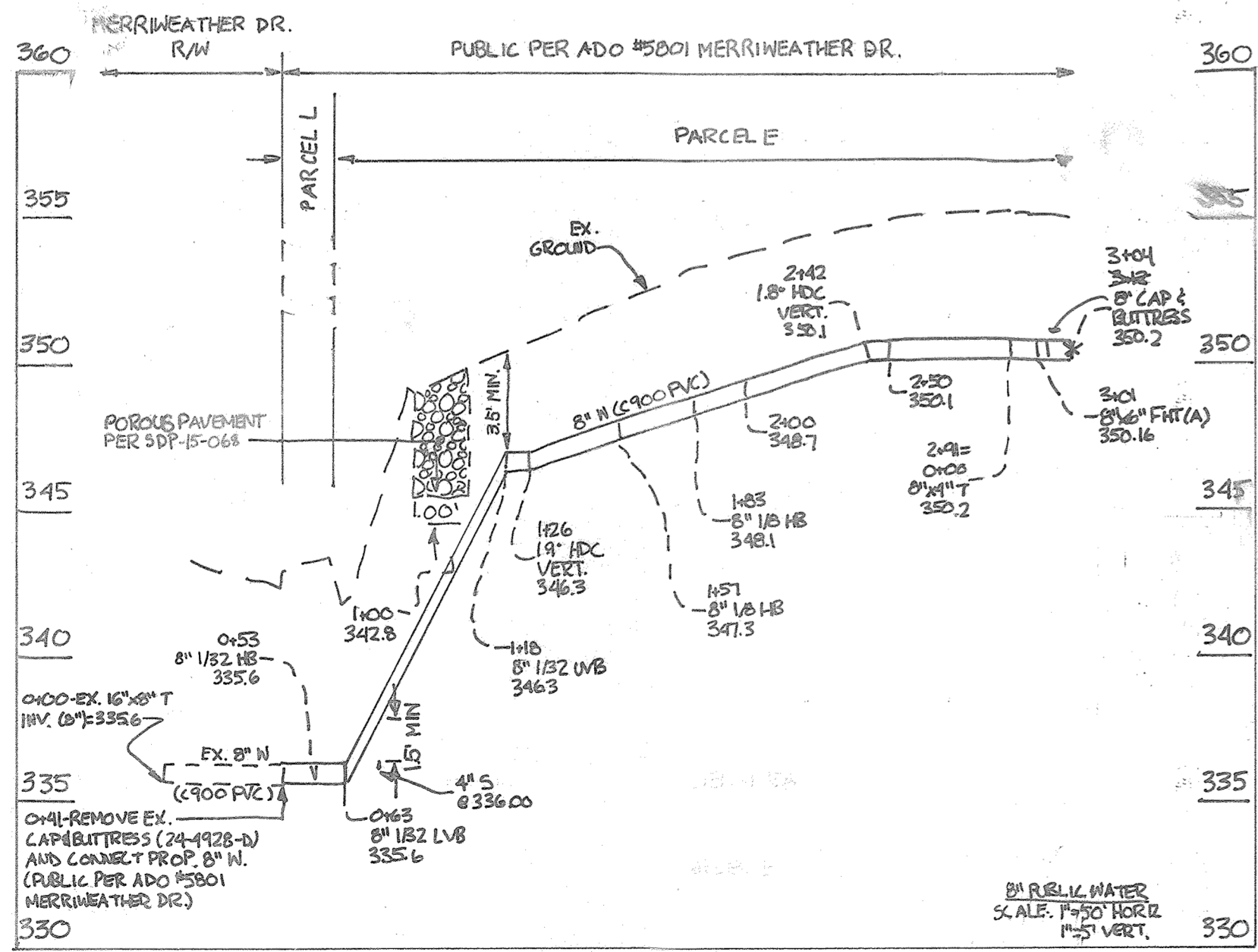
BY	NO.	REVISION	DATE
WKA	1	AS-BUILTS	3/25/24
KCT	2	AS-BUILTS	1/17
PEV	3	Remove seal of construction & insertion valve. added cone buttress at W-3 T-2.2.	11/25/14
J.H.	4	Revise T. Location	8-26-16
J.H.	5	Add 6" WHC to Garage	5-17-18
BY	NO.	REVISION	DATE

WATER & SEWER EXTENSION PLAN
600' SCALE MAP NO. 36 & 39 BLOCK NO. 01

DOWNTOWN COLUMBIA
CRESCENT NEIGHBORHOOD
CONTRACT NO. 24-4928-D
PARCELS A-1 THRU A-3, E. NON-BUILDABLE BULK PARCEL L, OPEN SPACE LOTS 1, 8 & 9 AND MERRIVETHER-SYMPHONY WOODS NEIGHBORHOOD OPEN SPACE LOT 1
HOWARD COUNTY, MARYLAND
ELECTION DISTRICT No. 5
SCALE 1" = 50'
SHEET 2 OF 5

L:\CAD\DRAWINGS\11071\PLANS BY G\W\WKA & S\W\PEV\FINAL\PHASE-A & B\11071-W-02 (1A).dwg PLOTTED: 12/17/2015 3:08 PM, LAST SAVED: 12/17/2015 3:07 PM, PLOTTED BY: Joy Henrichsen © GLW 2014

MJ & MJ BENDS		5/8" MJ (MJ BENDS) (1/2")	
NOM. SIZE	T	A	WT (LBS)
2	0.30		
3	0.33		
4	0.34	1.25	16
6	0.36	1.50	27
8	0.38	1.75	38
10	0.40	2.00	56
12	0.42	2.25	73
14	0.47		
16	0.50	2.50	150
18	0.54		
20	0.57	3.00	239
24	0.61	3.00	317
30	0.66	4.75	568
36	0.74	5.00	823
42	0.82	6.00	1123
48	0.90	6.50	1600



L:\CADD\DRAWINGS\UTILITY\PLANS BY GJM\Water & Sewer\FINAL\PHASE-1A & 1B\11071-NS-03 (1A).dwg
PLOTTED: 12/17/2015 3:12 PM, LAST SAVED: 12/17/2015 3:12 PM, PLOTTED BY: BOB JENKINS

PREPARED FOR:
THE HOWARD HUGHES CORP.
10480 LITTLE PATUXENT PARKWAY
SUITE 400
COLUMBIA, MARYLAND 21044
ATTN: BOB JENKINS
410-964-5443

DEPARTMENT OF PUBLIC WORKS
HOWARD COUNTY, MARYLAND
Steve C. Coan
CHIEF, BUREAU OF UTILITIES

DEPARTMENT OF PLANNING AND ZONING
HOWARD COUNTY, MARYLAND
Chad C. Coan
CHIEF, DEVELOPMENT ENGINEERING DIVISION
12-31-15

GLW GUTSCHICK LITTLE & WEBER, P.A.
CIVIL ENGINEERS, LAND SURVEYORS, LAND PLANNERS, LANDSCAPE ARCHITECTS
3909 NATIONAL DRIVE - SUITE 250 - BURTONSVILLE OFFICE PARK
BURTONSVILLE, MARYLAND 20866
TEL: 301-421-4024 BALT: 410-880-1820 DC/VA: 301-998-2524 FAX: 301-421-4186
DES. WsJ DRN. WsJ CHK. MJT

DATE NOV. 2015
G.L.W. No. 11071

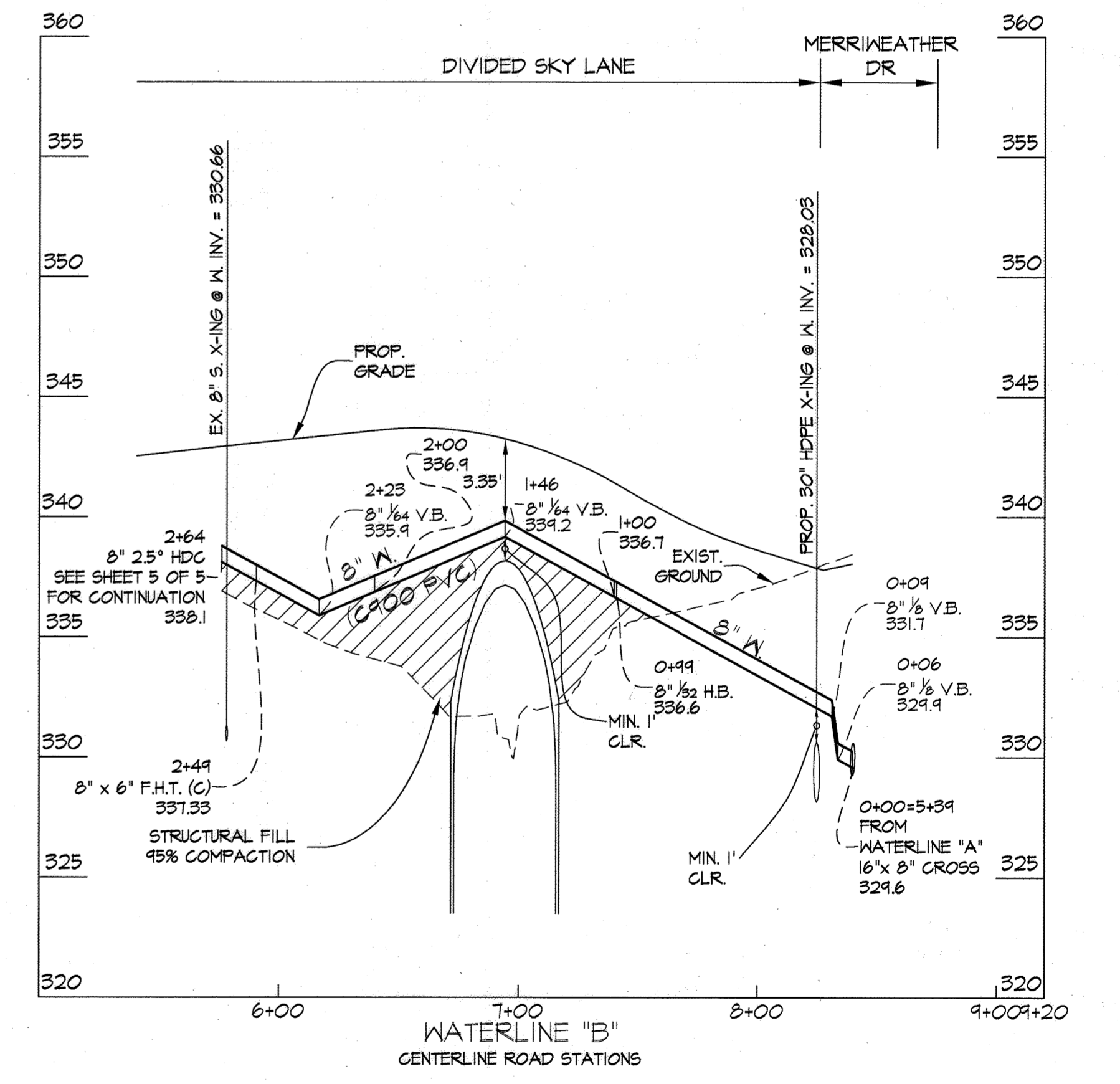
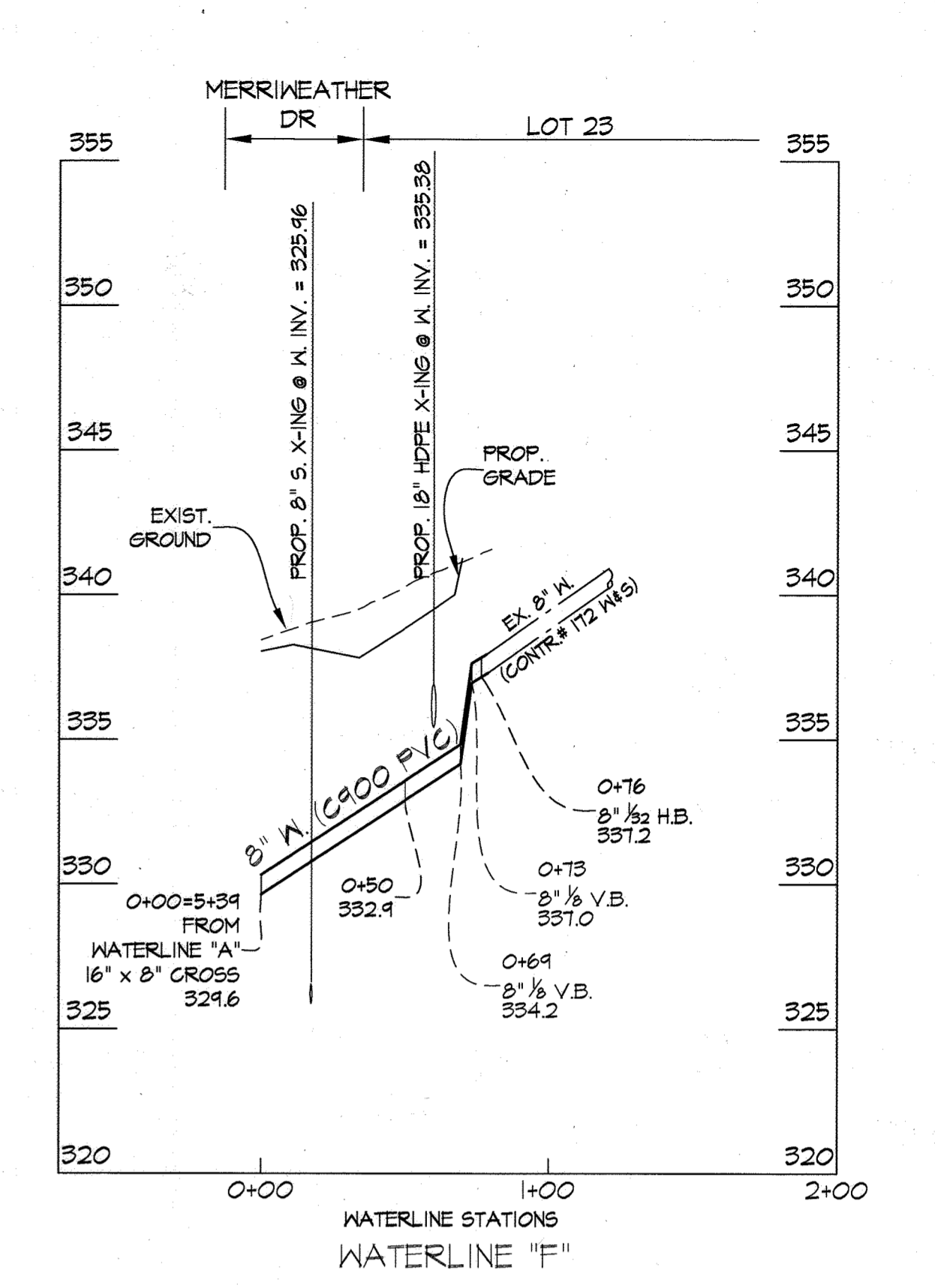
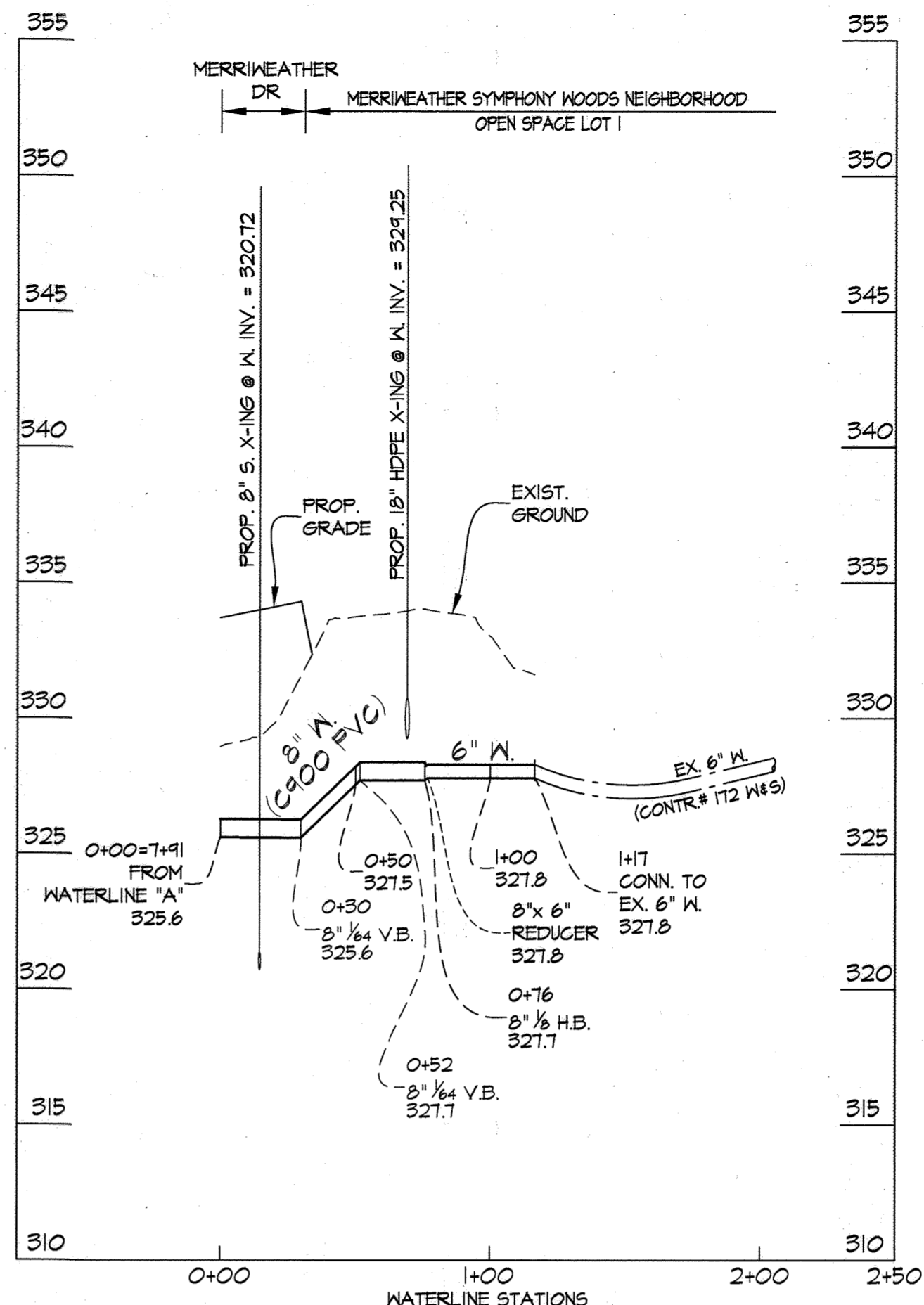
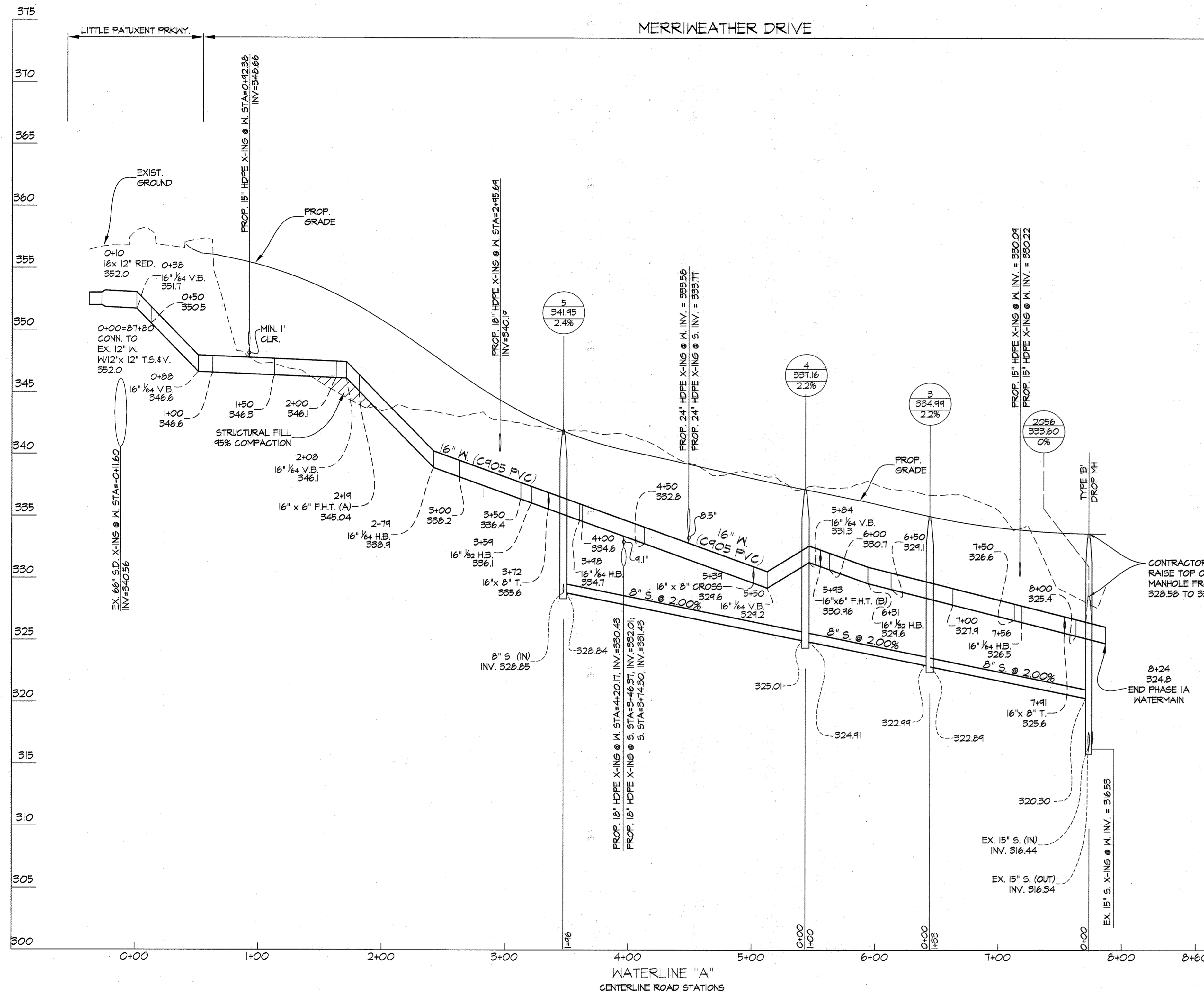
PROFESSIONAL CERTIFICATION
I HEREBY CERTIFY THAT THESE PLANS WERE PREPARED OR APPROVED BY ME AND THAT I AM A DULY LICENSED PROFESSIONAL ENGINEER UNDER THE LAWS OF THE STATE OF MARYLAND.
LICENSE NO. 12975
EXP. DATE: MAY 26, 2016
Bob Jenkins

WRA	BY	NO	REVISION	DATE
AS-BUILTS				3/25/14

WATER ABANDONMENT/REMOVAL PLAN
600' SCALE MAP NO. 36 & 39 BLOCK NO. 01

DOWNTOWN COLUMBIA
CRESCENT NEIGHBORHOOD
CONTRACT No. 24-4928-D
PARCELS A-1 THRU A-3, E. NON-BUILDABLE BULK PARCEL L, OPEN SPACE LOTS 1, 8 & 9 AND MERRIMWEATHER-SYMPHONY WOODS NEIGHBORHOOD OPEN SPACE LOT 1
HOWARD COUNTY, MARYLAND
ELECTION DISTRICT No. 5

SCALE 1" = 50'
SHEET 3 OF 5



FOR WATER AND SEWER PLAN SEE SHEET 2 OF 5

PROFILE SCALES:
1" = 5' VERT.
1" = 50' HORZ.

PREPARED FOR:
THE HOWARD HUGHES CORP.
10480 LITTLE PATUXENT PARKWAY
SUITE 400
COLUMBIA, MARYLAND 21044
ATTN: BOB JENKINS
410-964-5443

L:\CADD\DRAWINGS\11071\PLANS BY GLW\Water & Sewer\FINAL\PHASE-1A & 1B\11071-WS-PROFILE 1 (1A & 1B).dwg
PLOTTED: 12/17/2015 3:18 PM, LAST SAVED: 11/20/2015 1:32 PM, PLOTTED BY: JOY HOCHSTETTER

DEPARTMENT OF
PUBLIC WORKS
HOWARD COUNTY, MARYLAND
Steve C...
CHIEF, BUREAU OF UTILITIES

DEPARTMENT OF
PLANNING AND ZONING
HOWARD COUNTY, MARYLAND
Chad...
CHIEF, DEVELOPMENT ENGINEERING DIVISION
DATE: 12.31.15

GLW GUTSCHICK LITTLE & WEBER, P.A.
CIVIL ENGINEERS, LAND SURVEYORS, LAND PLANNERS, LANDSCAPE ARCHITECTS
3009 NATIONAL DRIVE - SUITE 250 - BURTONSVILLE OFFICE PARK
BURTONSVILLE, MARYLAND 20866
TEL: 301-421-4024 BALT: 410-880-1820 DC/VA: 301-989-2524 FAX: 301-421-4186
DES. Wsj DRN. Wsj CHK. DEV

DATE
NOV.,
2015
G.L.W. No.
11071

PROFESSIONAL CERTIFICATION
I HEREBY CERTIFY THAT THESE PLANS
WERE PREPARED OR APPROVED BY ME,
AND THAT I AM A DULY LICENSED
PROFESSIONAL ENGINEER UNDER THE
LAWS OF THE STATE OF MARYLAND,
LICENSE NO. 12975
EXP. DATE: MAY 28, 2016
Chad...

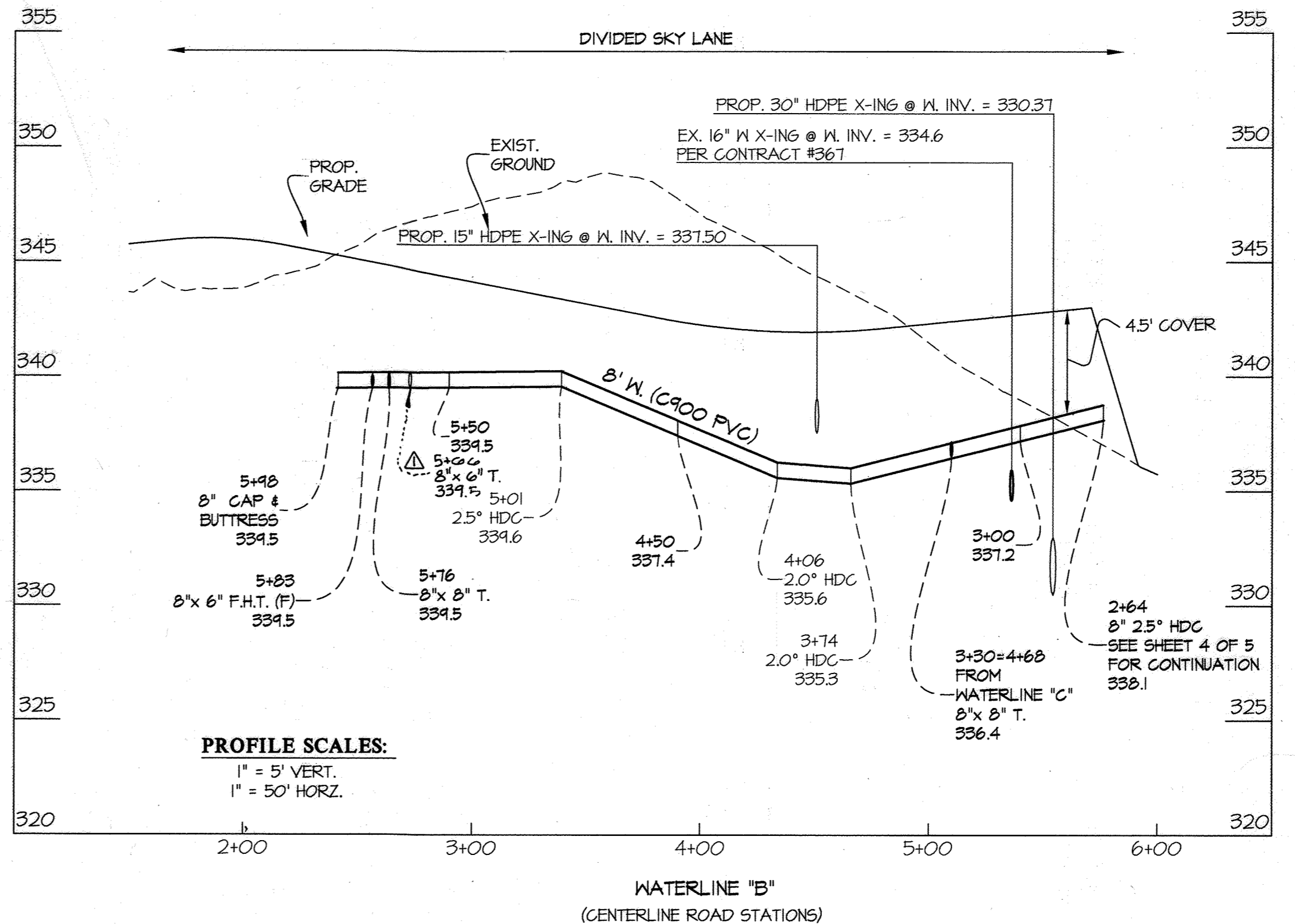
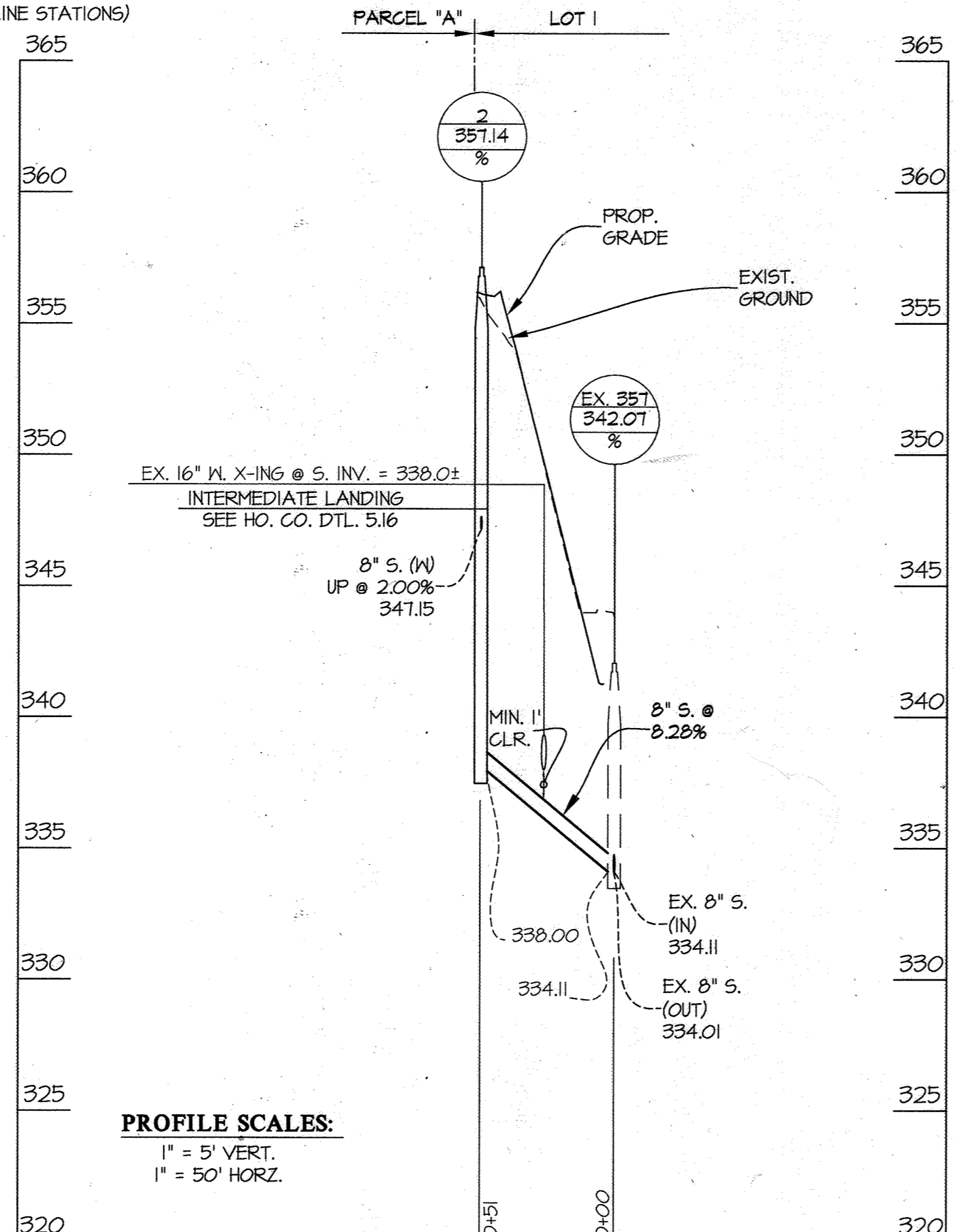
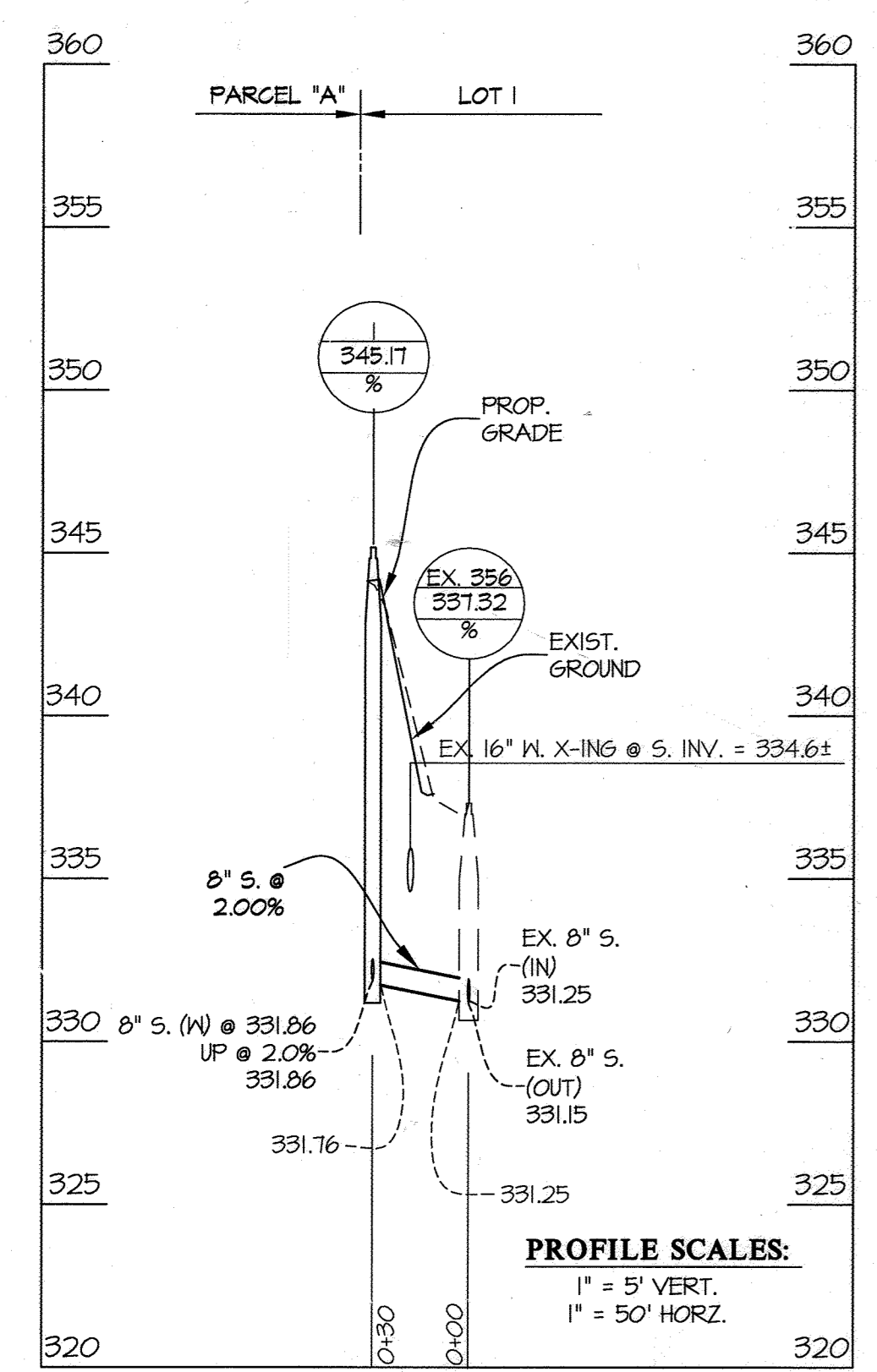
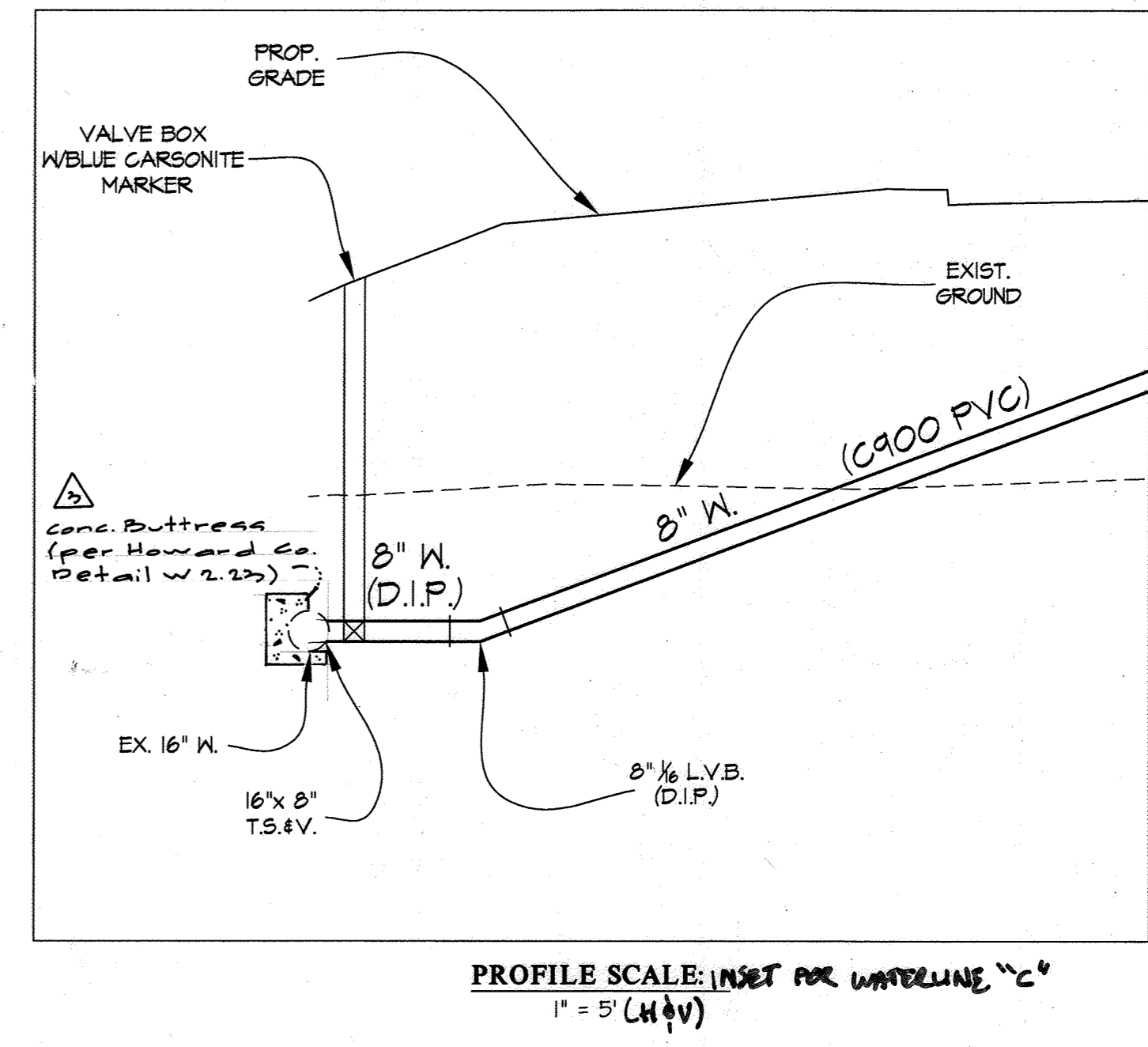
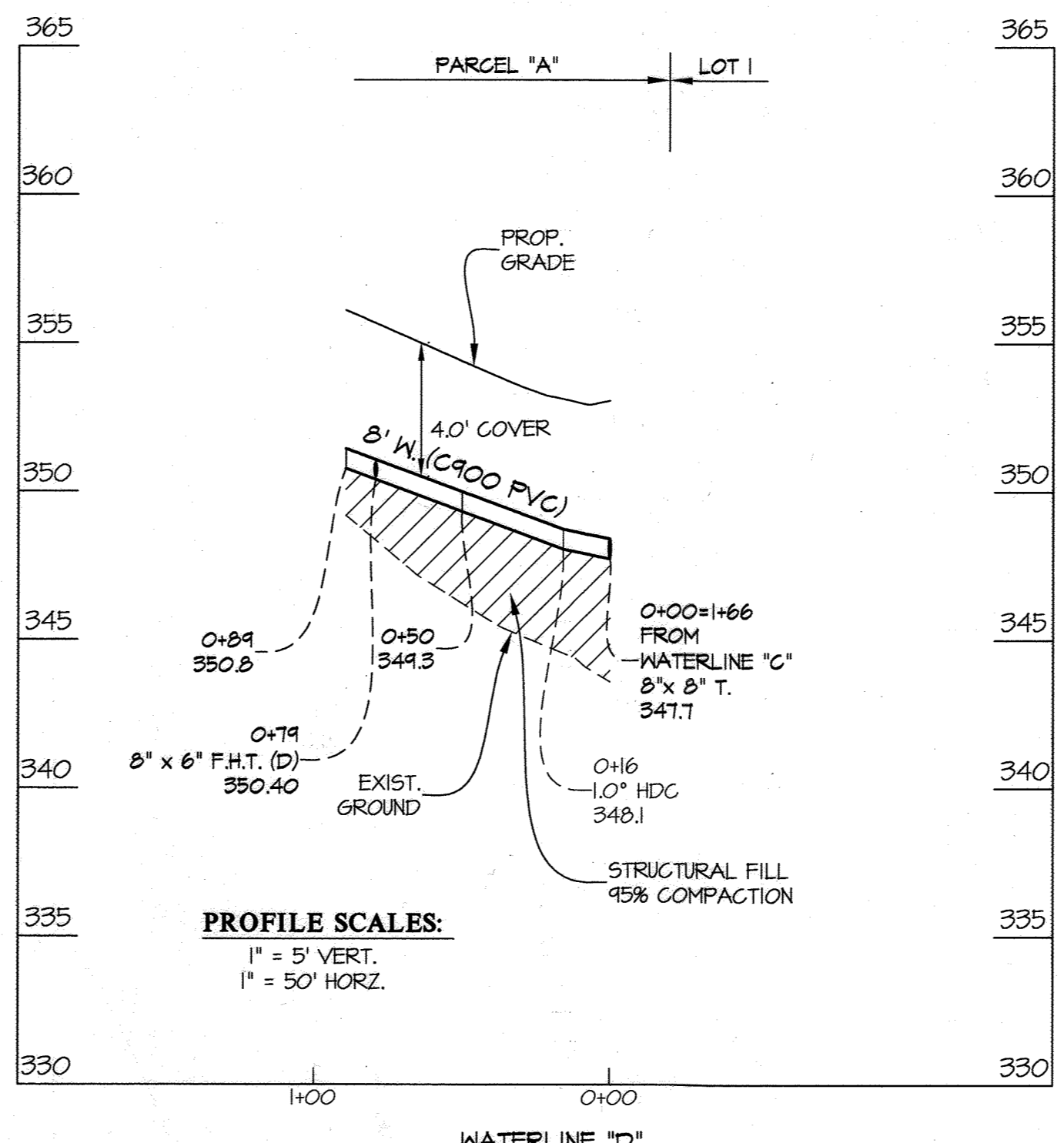
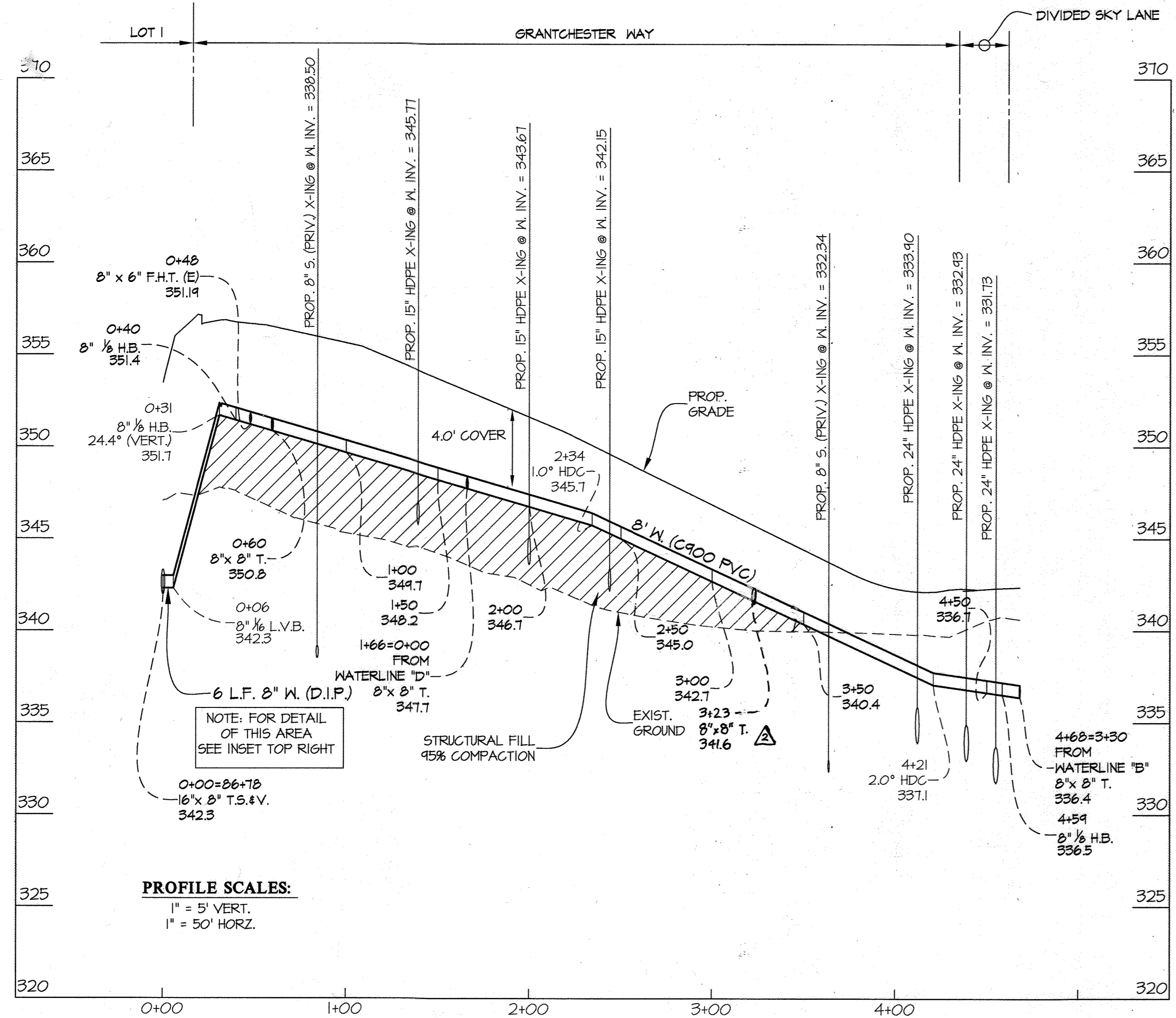


BY	NO	REVISION	DATE

WATER & SEWER EXTENSION
PROFILES
600' SCALE MAP NO. 36 & 39 BLOCK NO. 01

DOWNTOWN COLUMBIA
CRESCENT NEIGHBORHOOD
CONTRACT No. 24-4928-D
PARCELS A-1 THRU A-3, E. NON-BUILDABLE BULK PARCEL 1,
OPEN SPACE LOTS 1, 8 & 9 AND MERRIWEATHER-SYMPHONY
WOODS NEIGHBORHOOD OPEN SPACE LOT 1
HOWARD COUNTY, MARYLAND
ELECTION DISTRICT No. 5

SCALE
AS SHOWN
SHEET
4 OF 5



FOR WATER AND SEWER PLAN SEE SHEET 2 OF 5

PREPARED FOR:
THE HOWARD HUGHES CORP.
10480 LITTLE PATUXENT PARKWAY
SUITE 400
COLUMBIA, MARYLAND 21044
ATTN: BOB JENKINS
410-964-5443

ALL DIMENSIONS UNLESS OTHERWISE SPECIFIED ARE IN FEET AND INCHES. DIMENSIONS TO FACE UNLESS OTHERWISE SPECIFIED. DATE: 12-31-15.

DEPARTMENT OF PUBLIC WORKS
HOWARD COUNTY, MARYLAND
DATE: 12-31-15

DEPARTMENT OF PLANNING AND ZONING
HOWARD COUNTY, MARYLAND
DATE: 12-31-15

GLWGUTSCHICK LITTLE & WEBER, P.A.
CIVIL ENGINEERS, LAND SURVEYORS, LAND PLANNERS, LANDSCAPE ARCHITECTS
3909 NATIONAL DRIVE - SUITE 250 - BURTONSVILLE OFFICE PARK
BURTONSVILLE, MARYLAND 20866
TEL: 301-421-4024 FAX: 301-989-2524

DATE NOV., 2015
PROFESSIONAL CERTIFICATION
I HEREBY CERTIFY THAT THESE PLANS WERE PREPARED OR APPROVED BY ME, AND THAT I AM A DULY LICENSED PROFESSIONAL ENGINEER UNDER THE LAWS OF THE STATE OF MARYLAND, LICENSE NO. 12975, EXP. DATE: MAY 28, 2016



BY	NO.	REVISION	DATE
DEW	1	Added concrete buttress to waterline 'C' inset	11-25-14
J.H.	2	Revise T. Location	8-26-16
J.H.	3	Add G.W.H.C. to Garage	5-17-16
BY	NO.	REVISION	DATE

WATER & SEWER EXTENSION PROFILES
600' SCALE MAP NO. 36 & 39 BLOCK NO. 01

DOWNTOWN COLUMBIA
CRESCENT NEIGHBORHOOD
CONTRACT No. 24-4928-D
PARCELS A-1 THRU A-3, E. NON-BUILDABLE BULK PARCEL L, OPEN SPACE LOTS 1, 8 & 9 AND MERRIWEATHER-SYMPHONY WOODS NEIGHBORHOOD OPEN SPACE LOT 1
HOWARD COUNTY, MARYLAND
ELECTION DISTRICT No. 5

SCALE AS SHOWN
SHEET 5 OF 5