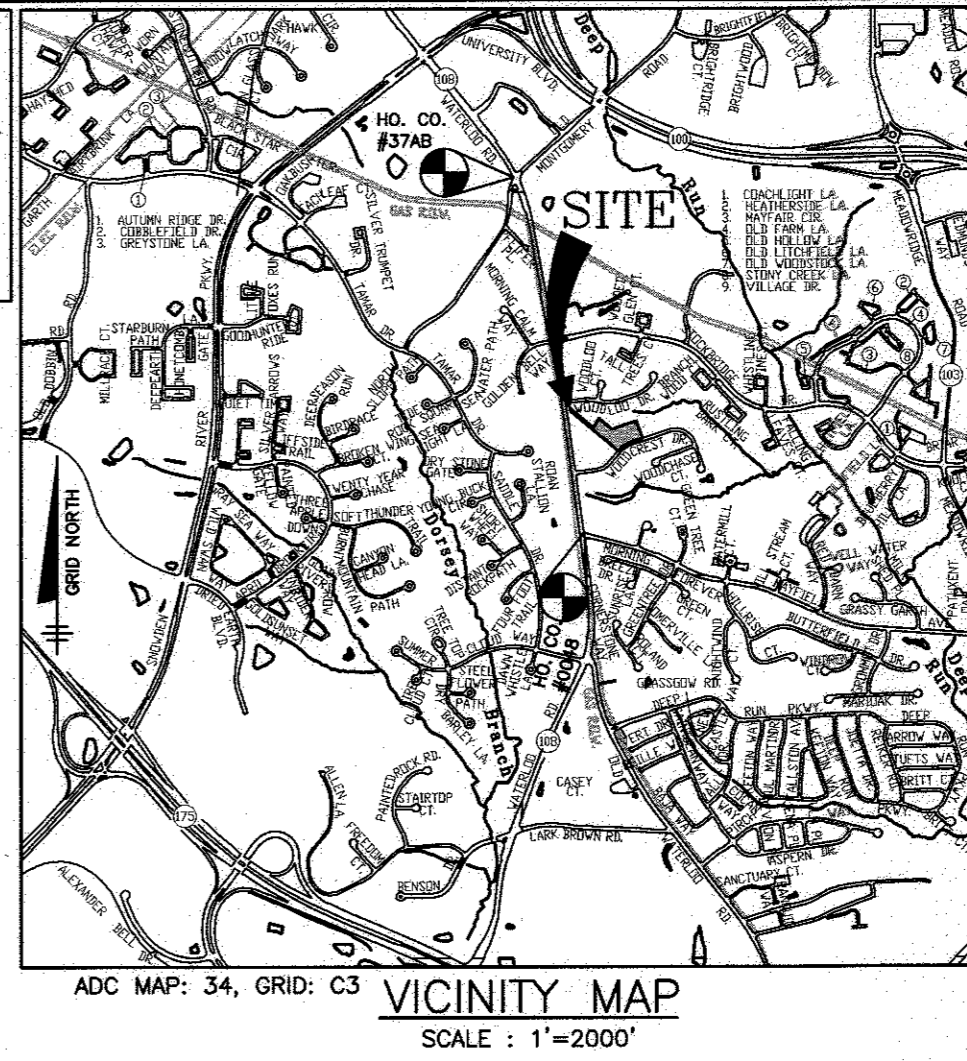


WOODBROOK SECTION 2

CONTRACT NO. 14-4912-D

BENCH MARKS NAD '83
 HO. CO. MON. 37AB ELEV. 390.452
 STAMPED DISC ON CONCRETE MONUMENT.
 CORNER MD. RT. 108 & OLD MONTGOMERY RD.
 N 561,137.376 E 1,369,891.847

HO. CO. MON. 0048 ELEV. 348.044
 STAMPED DISC ON CONCRETE MONUMENT.
 CORNER MD. RT. 108 & MAYFIELD AVENUE
 N 557,526.362 E 1,370,661.967



ITEMS	QUANTITIES ESTIMATED	AS-BUILT		
		QUANTITIES	TYPE	MANUF./SUPPLIER
6" PVC C900 WATER DR-14	129 LF	129 LF	C-900	NORTHAMERICAN PIPE
FIRE HYDRANTS (INCLUDES 8"x6" TEE & 6" VALVE)	N/A			
8"x6" TAPPING SLEEVE & VALVE	1 EA	1 EA	66855/7-250	SMITH BLAIR/MUELLER
1" METER VAULT	8 EA	8 EA	PRECAST	HORNE CONCRETE
1-1/2" WHC	129 LF	129 LF	TYPE K SOFT COPPER	CECO FLOW PRODUCTS
8" PVC SDR-35 SEWER	205 LF	205 LF	SDR 35	NATIONAL PIPE
CLEAN OUT LAMP HOLE	1 EA	1 EA	PRECAST	HORNE CONCRETE
MANHOLES	3 EA	3 EA	PRECAST	ATLANTIC PRECAST
6" SHC	68 LF	68 LF	SDR 35	NATIONAL PIPE
4" SHC	105 LF	105 LF	SDR 35	NATIONAL PIPE
PAVEMENT REPLACEMENT	100 SY	100 SY		

NAME OF UTILITY CONTRACTOR:
 SURVEY AND DRAFTING DIVISION AS-BUILT DATE:

GENERAL NOTES

PART I

- APPROXIMATE LOCATIONS OF EXISTING MAINS ARE SHOWN. THE CONTRACTOR SHALL TAKE ALL NECESSARY PRECAUTIONS TO PROTECT EXISTING MAINS AND SERVICES AND MAINTAIN UNINTERRUPTED SERVICE. ANY DAMAGE INCURRED SHALL BE REPAIRED IMMEDIATELY TO THE SATISFACTION OF THE ENGINEER AT THE CONTRACTOR'S EXPENSE.
- TOPOGRAPHIC FIELD SURVEYS WERE PERFORMED IN FEBRUARY, 2014 BY BENCHMARK ENGINEERING, INC.
- HORIZONTAL AND VERTICAL SURVEY CONTROLS:
 THE COORDINATES SHOWN ON THE DRAWINGS ARE BASED ON MARYLAND STATE REFERENCE SYSTEM NAD '83/91 AS PROJECTED BY HOWARD COUNTY GEODETIC CONTROL STATIONS NO. 37AB AND NO. 0048.
- ALL VERTICAL CONTROLS ARE BASED ON NAVD '88. VERTICAL CONTROLS PROVIDED ON THE DRAWINGS ARE 0012 AND 18E1.
- ALL PIPE ELEVATIONS SHOWN ARE INVERT ELEVATIONS UNLESS OTHERWISE NOTED ON THE PLANS.
- CLEAR ALL UTILITIES BY A MINIMUM OF 12 INCHES. CLEAR ALL POLES BY 5'-0" MINIMUM OR TUNNEL AS REQUIRED UNLESS OTHERWISE NOTED. THE OWNER HAS CONTACTED THE UTILITY COMPANIES AND HAS MADE ARRANGEMENTS FOR BRACING OF POLES AS SHOWN ON THE DRAWINGS. IN THE EVENT THE CONTRACTOR'S WORK REQUIRES THE BRACING OF ADDITIONAL POLES, ANY COST INCURRED BY THE OWNER FOR THE BRACING OF ADDITIONAL POLES OR DAMAGES SHALL BE DEDUCTED FROM MONIES OWED THE CONTRACTOR. THE CONTRACTOR SHALL COORDINATE WITH THE UTILITY COMPANIES TO SCHEDULE THE BRACING OF THE POLES.
- FOR DETAILS NOT SHOWN ON THE DRAWING, AND FOR MATERIALS AND CONSTRUCTION METHODS, USE HOWARD COUNTY DESIGN MANUAL VOLUME IV, STANDARD SPECIFICATIONS AND DETAILS FOR CONSTRUCTION (LATEST EDITION). THE CONTRACTOR SHALL HAVE A COPY OF VOLUME IV ON THE JOB.
- WHERE TEST FITS HAVE BEEN MADE ON EXISTING UTILITIES, THEY ARE NOTED BY THE SYMBOL AT THE LOCATIONS OF THE TEST FITS. A NOTE OR NOTES CONTAINING THE RESULTS OF THE TEST FIT OR FITS IS INCLUDED ON THE DRAWINGS. EXISTING UTILITIES IN THE VICINITY OF THE PROPOSED WORK FOR WHICH TEST FITS HAVE NOT BEEN MADE SHALL BE LOCATED BY THE CONTRACTOR TWO WEEKS IN ADVANCE OF CONSTRUCTION OPERATIONS AT HIS OWN EXPENSE.
- THE CONTRACTOR SHALL NOTIFY THE FOLLOWING UTILITY COMPANIES OR AGENCIES AT LEAST FIVE WORKING DAYS BEFORE STARTING WORK ON THESE PLANS:
 AT&T.....1-800-252-1133
 BGE (CONTRACTOR SERVICES).....410-637-8713
 BGE (EMERGENCY).....410-685-0123
 BUREAU OF UTILITIES.....410-313-4000
 COLONIAL PIPELINE CO.....410-795-1390
 MISS UTILITY.....1-800-257-7777
 STATE HIGHWAY ADMINISTRATION.....410-531-5533
 VERIZON.....1-800-743-0033
- TREES AND SHRUBS ARE TO BE PROTECTED FROM DAMAGE TO THE MAXIMUM EXTENT. TREES AND SHRUBS LOCATED WITHIN THE CONSTRUCTION STRIP ARE NOT TO BE REMOVED OR DAMAGED BY THE CONTRACTOR.
- THE CONTRACTOR SHALL REMOVE TREES, STUMPS AND ROOTS ALONG LINE OF EXCAVATION. PAYMENT FOR SUCH REMOVAL SHALL BE INCLUDED IN THE UNIT PRICE BID FOR CONSTRUCTION OF THE MAIN.
- THE CONTRACTOR SHALL NOTIFY THE BUREAU OF HIGHWAYS, HOWARD COUNTY, AT (410)-313-7450 AT LEAST FIVE WORKING DAYS BEFORE CUTTING OR BORING/JACKING OF ANY COUNTY ROAD FOR LAYING WATER/SEWER MAINS OR HOUSE CONNECTIONS. THE APPROVAL OF THESE DRAWINGS WILL CONSTITUTE COMPLIANCE WITH DPW REQUIREMENTS PER SECTION 18.114(g) OF THE HOWARD COUNTY CODE.

WATER HOUSE CONNECTION AS-BUILT LOCATION TABLE

LOT	ADDRESS	LOCATION DIMENSION 1	LOCATION DIMENSION 2
63	WOODCREST DRIVE	SMH 1 25'	SMH 2 71'
64	WOODCREST DRIVE	SMH 1 25'	1-12 72.5'
65	WOODCREST DRIVE	SMH 1 17'	1-12 106'
66	WOODCREST DRIVE	SMH 1 23.5'	1-12 128'
67	WOODCREST DRIVE	SMH 1 26'	1-12 130'
68	WOODCREST DRIVE	SMH 1 27'	SMH 2 71'
69	WOODCREST DRIVE	SMH 2 60'	SMH 2 51'
70	WOODCREST DRIVE	SMH 2 62'	SMH 2 60'

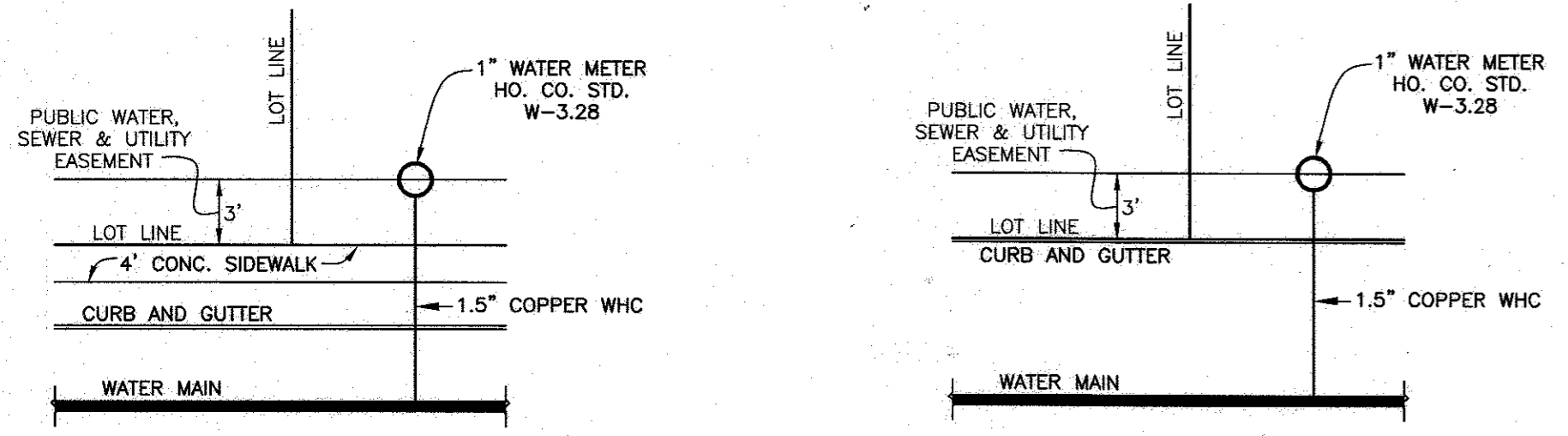
SEWER HOUSE CONNECTION AS-BUILT LOCATION TABLE

LOT	ADDRESS	LOCATION DIMENSION 1	LOCATION DIMENSION 2
63	WOODCREST DRIVE	SMH 1 90'	SMH 2 62'
64	WOODCREST DRIVE	SMH 1 13'	1-12 74'
65	WOODCREST DRIVE	SMH 1 22.8'	1-12 107'
66	WOODCREST DRIVE	SMH 1 23'	1-12 119'
67	WOODCREST DRIVE	SMH 1 17'	1-12 124'
68	WOODCREST DRIVE	SMH 1 25.5'	SMH 2 59'
69	WOODCREST DRIVE	SMH 2 47'	SMH 2 58.5'
70	WOODCREST DRIVE	SMH 2 46'	SMH 2 50'

LOT FRONT DIMENSION CHART

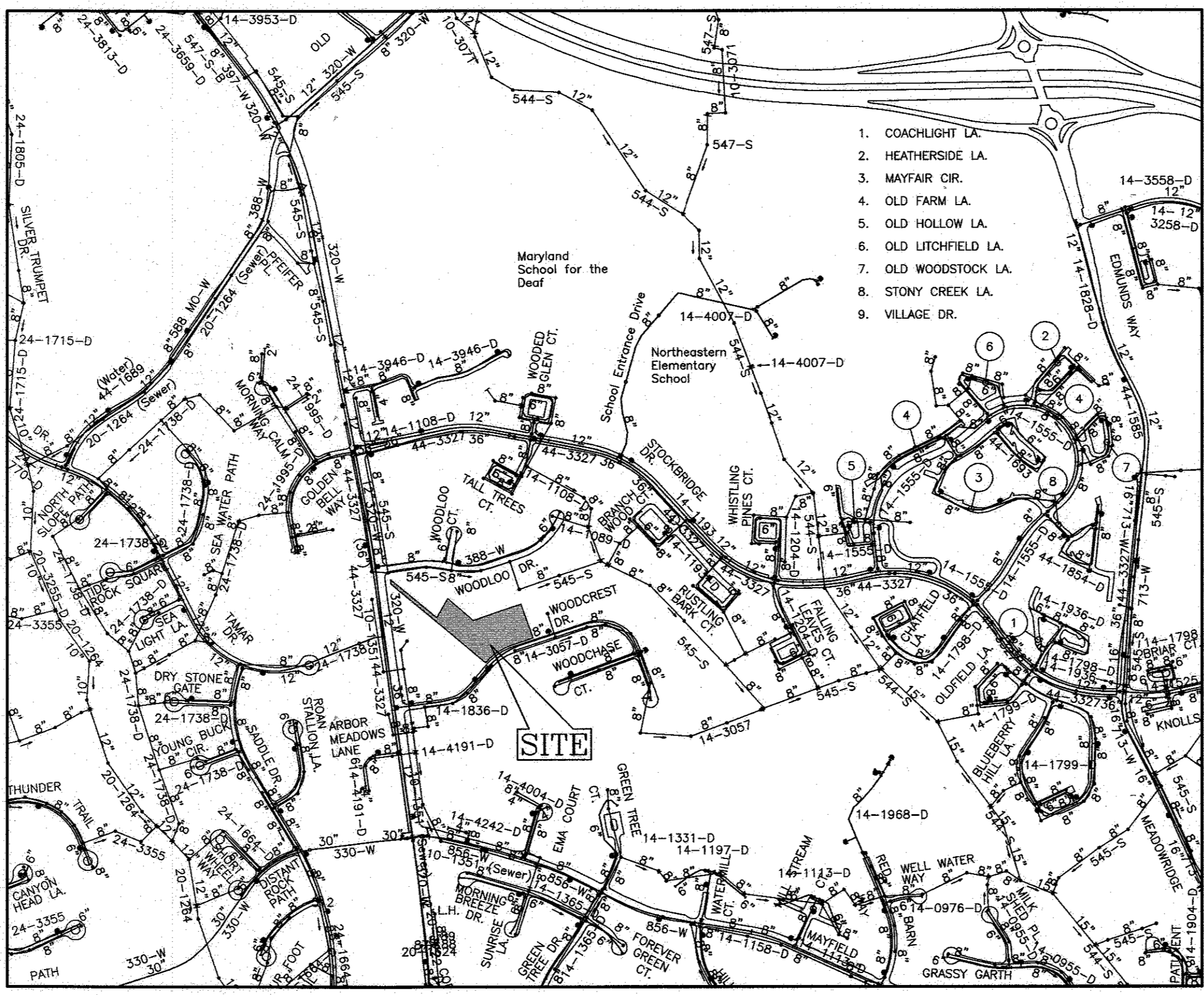
LOT	DIMENSION
64	6.00'
65	6.00'
66	6.00'
67	6.00'
68	58'
69	12.00'
70	12.00'

NOTE:
 SEE HO. CO. STD. DETAIL W-3.28 FOR SINGLE OUTSIDE METER SETTING



TYPICAL SINGLE WATER HOUSE CONNECTION w/FRONT SIDEWALK (OUTSIDE METER SETTING)
 NOT TO SCALE

TYPICAL SINGLE WATER HOUSE CONNECTION NO SIDEWALK (OUTSIDE METER SETTING)
 NOT TO SCALE



SHC TABLE

LOT NO.	INVERT AT MH OR MAIN	INVERT AT RW/ESMT.	MCE	REMARKS
63	334.1	334.2	338.2	SHC
64	335.9	336.1	339.8	DSHC
65	336.0	336.3	340.2	SHC
66	336.0	336.3	340.5	SHC
67	335.9	336.3	340.1	DSHC
68	335.0	335.4	339.4	SHC
69	340.3	340.9	346.0	TSHC - PRIVATE SHC TO HOUSE AT 1.7%
70	340.3	340.9	346.9	TSHC

AS-BUILT
 12/5/16

NOTE:
 ALL WATER HOUSE CONNECTIONS ARE TO BE 1.5" WITH A 1" METER (OUTSIDE SETTING).
 ALL SINGLE SEWER HOUSE CONNECTIONS SHALL BE 4" PVC. TWIN SEWER HOUSE CONNECTIONS CALL FOR 6" TO MAIN, SEE DETAIL S-2.14.

SHEET INDEX

NO.	DESCRIPTION
1	TITLE SHEET
2	PLAN VIEW AND PROFILE, PUBLIC WATER & SEWER MAINS

PART II WATER

- ALL WATER MAINS TO BE C900 PVC, DR-14 UNLESS OTHERWISE NOTED.
- TOPS OF ALL WATER MAINS SHALL HAVE A MINIMUM OF 3'-6" OF COVER UNLESS OTHERWISE NOTED.
- VALVES ADJACENT TO TEES SHALL BE STRAPPED TO TEES.
- ALL FITTINGS SHALL BE BUTTRESSED OR ANCHORED WITH CONCRETE IN ACCORDANCE WITH STANDARD DETAILS UNLESS OTHERWISE PROVIDED FOR ON THE DRAWINGS.
- FIRE HYDRANTS SHALL BE SET TO THE BURY LINE ELEVATIONS SHOWN ON THE DRAWINGS. ALL FIRE HYDRANTS SHALL BE INSTALLED IN ACCORDANCE WITH THE STANDARD DETAILS. THE SOIL AROUND THE FIRE HYDRANT SHALL BE COMPACTED IN ACCORDANCE WITH SECTION 1000 AND SECTION 1005 OF THE STANDARD SPECIFICATIONS.
- THE CONTRACTOR SHALL NOT OPERATE ANY WATER MAIN VALVES ON THE EXISTING WATER SYSTEM.
- TRACER WIRE AND CONTINUITY TEST STATIONS SHALL BE INSTALLED ON ALL DIP AND PVC WATER MAINS IN ACCORDANCE WITH THE HOWARD COUNTY DESIGN MANUAL.
- FOR PVC WATER MAINS, ALL RECORDS FOR THE QUALITY CONTROL AND QUALIFICATION TEST REQUIREMENTS NOTED IN SECTION 5.1 OF THE AWWA STANDARD C900 FOR PVC PRESSURE PIPE SHALL BE SUBMITTED WITH THE PIPE MATERIAL CERTIFICATIONS OR SHOP DRAWINGS PRIOR TO APPROVAL OF THE MATERIAL FOR USE. THE TEST RECORDS SHALL BE FOR THE PIPE TO BE INSTALLED UNDER THIS CONTRACT. ALL PVC PIPE SHALL CONTAIN MARKINGS TO ALLOW CROSS REFERENCING OF THE PIPE SUPPLIED TO THE TEST RECORDS RECEIVED.
- UNLESS OTHERWISE NOTED ON THE PLANS OR IN THE SPECIFICATIONS, ANODES SHALL BE INSTALLED ON ALL VALVES AND METALLIC FITTINGS USED WITH PVC WATER MAINS IN ACCORDANCE WITH VOLUME IV, STANDARD SPECIFICATIONS AND DETAILS FOR CONSTRUCTION. SEVENTEEN (17) POUND MAGNESIUM ANODES SHALL BE INSTALLED ON ALL VALVES AND DUCTILE IRON FITTINGS INCLUDING RESTRAINTS AND HARNESSES. TWELVE (12) POUND ZINC ANODES SHALL BE INSTALLED ON ALL STAINLESS STEEL FITTINGS AND SADDLES USED WITH PVC MAINS. ALL "TEES" USED WITH PVC MAINS SHALL BE DUCTILE IRON.
- PROPER ASSEMBLY OF GASKETED PVC PIPE JOINTS: THE MANUFACTURER'S INSERTION LINE OF GASKETED PVC PIPE JOINTS INDICATES THE MAXIMUM DEPTH OF INSERTION OF THE SPIGOT INTO THE BELL. AFTER ASSEMBLY OF THE JOINT, THE INSERTION LINE SHALL REMAIN VISIBLE. DUAL INSERTION LINES ON GASKETED PVC JOINTS INDICATE THE MAXIMUM AND MINIMUM DEPTH OF INSERTION OF THE SPIGOT INTO THE BELL. THE CONTRACTOR SHALL NOT INSERT OR OVER HOME THE SPIGOT INTO THE BELL OF PVC PIPE.
- ALL CHANGES IN HORIZONTAL AND VERTICAL DIRECTION OF PVC WATER PIPE SHALL BE MADE WITH STANDARD SWEEPS OR 5-DEGREE SWEEPS OR HIGH DEFLECTION (HD) COUPLINGS. NO BENDING OF THE PIPE OR DEFLECTING OF PVC PIPE JOINTS IS PERMITTED, WHERE HIGH DEFLECTION COUPLINGS OR 5-DEGREE SWEEPS ARE PERMITTED. THE CONTRACTOR SHALL PROVIDE ONE FULL PIPE LENGTH (20'-0" FOOT LONG) ON EITHER SIDE OF THE HIGH DEFLECTION COUPLING OR 5-DEGREE SWEEP. THE CONTRACTOR SHALL USE A VIBRATORY PLATE COMPACTOR OR OTHER APPROVED MEANS TO THOROUGHLY COMPACT THE TEST STONE ON BOTH SIDES OF THE HIGH DEFLECTION COUPLING OR 5-DEGREE SWEEP, TAKING CARE NOT TO USE COMPACTOR EQUIPMENT DIRECTLY OVER THE FITTING.
- PVC HIGH DEFLECTION COUPLINGS SHALL BE LIMITED TO A TOTAL DEFLECTION OF 3-DEGREE (1 1/2 DEGREE ON EITHER END OF THE COUPLING), SHALL BE RATED FOR A MINIMUM 200 PSI MEETING THE REQUIREMENTS OF AWWA C900, SHALL HAVE A MINIMUM LAY LENGTH OF 9-INCHES AND SHALL HAVE CENTER STOPS. PVC HIGH DEFLECTION COUPLINGS SHALL BE CERTAINTED PVC HIGH DEFLECTION (HD) STOP COUPLINGS OR EQUAL.
- 5-DEGREE SWEEPS SHALL BE BELL BY SPIGOT, RATED FOR A MINIMUM 225 PSI, DR18 MEETING THE REQUIREMENTS OF AWWA C900 AND SHALL BE MULTI FITTINGS (PEX) BLUE BRUTE DR18 OR EQUAL.
- WHEN PVC HIGH DEFLECTION COUPLINGS OR PVC 5-DEGREE SWEEPS ARE USED TO FACILITATE CHANGES IN HORIZONTAL OR VERTICAL ALIGNMENTS OF AWWA C-900 PVC PIPELINES, THE CONTRACTOR SHALL INSTALL DEVICES FOR THE PREVENTION OF OVER-INSERTION OF THE PVC PIPE SPIGOTS OR PLAIN ENDS INTO THE PUSH ON BELL JOINT ON BOTH SIDES OF THE HIGH DEFLECTION COUPLINGS AND 5 DEGREE SWEEPS. BELL STOPS SHALL BE PLACED AT THE PROPER INSERTION LINE FOR THE FITTING. THE BELL STOP SHALL BE MANUFACTURED OF DUCTILE IRON AND INCORPORATE AN EXPANSION RETENTION SPRING TO ALLOW FOR PIPE EXPANSION AND CONTRACTION. THE BELL STOPS SHALL BE SERIES 5000 MEGA-STOP, AS MANUFACTURED BY EMBA IRON, INC. OR APPROVED EQUAL.

PART III SEWER

- ALL SEWER MAINS SHALL BE D.I.P. OR P.V.C. UNLESS OTHERWISE NOTED.
- ALL MANHOLES SHALL BE 4'-0" INSIDE DIAMETER UNLESS OTHERWISE NOTED.
- FORCE MAINS SHALL BE D.I.P. ONLY.
- MANHOLES SHOWN WITH 12" AND 16" WALLS ARE FOR BRICK MANHOLES ONLY.
- MANHOLES DESIGNATED W.T. IN PLAN AND PROFILE SHALL HAVE WATERTIGHT FRAME AND COVER, STANDARD DETAIL 65-52, WHERE WATER TIGHT MANHOLE FRAMES AND COVERS ARE USED, SET TOP OF FRAME 1'-4" ABOVE FINISHED GRADE UNLESS OTHERWISE NOTED ON THE DRAWINGS.
- HOUSE(S) WITH THE SYMBOL "C.N.S." INDICATES THAT CELLAR CANNOT BE SERVED.

THIS PLAN IS APPROVED FOR SOIL EROSION AND SEDIMENT CONTROL BY THE HOWARD SOIL CONSERVATION DISTRICT.

John R. Blanton 12/1/15
 HOWARD SOIL CONSERVATION DISTRICT

SEEDING CONTROL MEASURES FOR THIS CONTRACT WILL BE IMPLEMENTED IN ACCORDANCE WITH SECTION 205 OF THE HOWARD COUNTY STANDARD SPECIFICATIONS AND AS PER F-15-096.

OWNER:
 JOHN R. & CHARLES E. NEIGHOFF, ET AL.
 4936 WHARF ROAD
 ELLICOTT CITY, MARYLAND 21043

DEVELOPER:
 SECURITY DEVELOPMENT, LLC
 P.O. BOX 417
 ELLICOTT CITY, MARYLAND 21041
 410-465-4244

Professional Certification. I hereby certify that these documents were prepared or approved by me, and that I am a duly licensed professional engineer under the laws of the State of Maryland, License No. 45377.
 Expiration Date: 06-08-2016.

BENCHMARK ENGINEERING, INC.
 ENGINEERS & LAND SURVEYORS & PLANNERS
 8480 BALTIMORE NATIONAL PIKE A SUITE 315 A ELLICOTT CITY, MARYLAND 21043
 (P) 410-485-8105 (F) 410-485-8844
 WWW.BEI-CVLENGINEERING.COM



DES:	JC
DRAFT:	NAF
CHK:	-
DATE:	10/2015
BY:	NO.

NO.	DESCRIPTION	DATE
1	REVISE SHC IN MANHOLES 64/70 TO AVOID GAS AND ELECTRICAL CONFLICTS, ADD MANHOLES TO MAIN.	6-1-16

WOODBROOK SECTION 2
 PHASE 1, LOTS 63-65 & PHASE 2, LOTS 66-70

TITLE SHEET

SCALE: AS SHOWN

SHEET NO. 1 OF 2

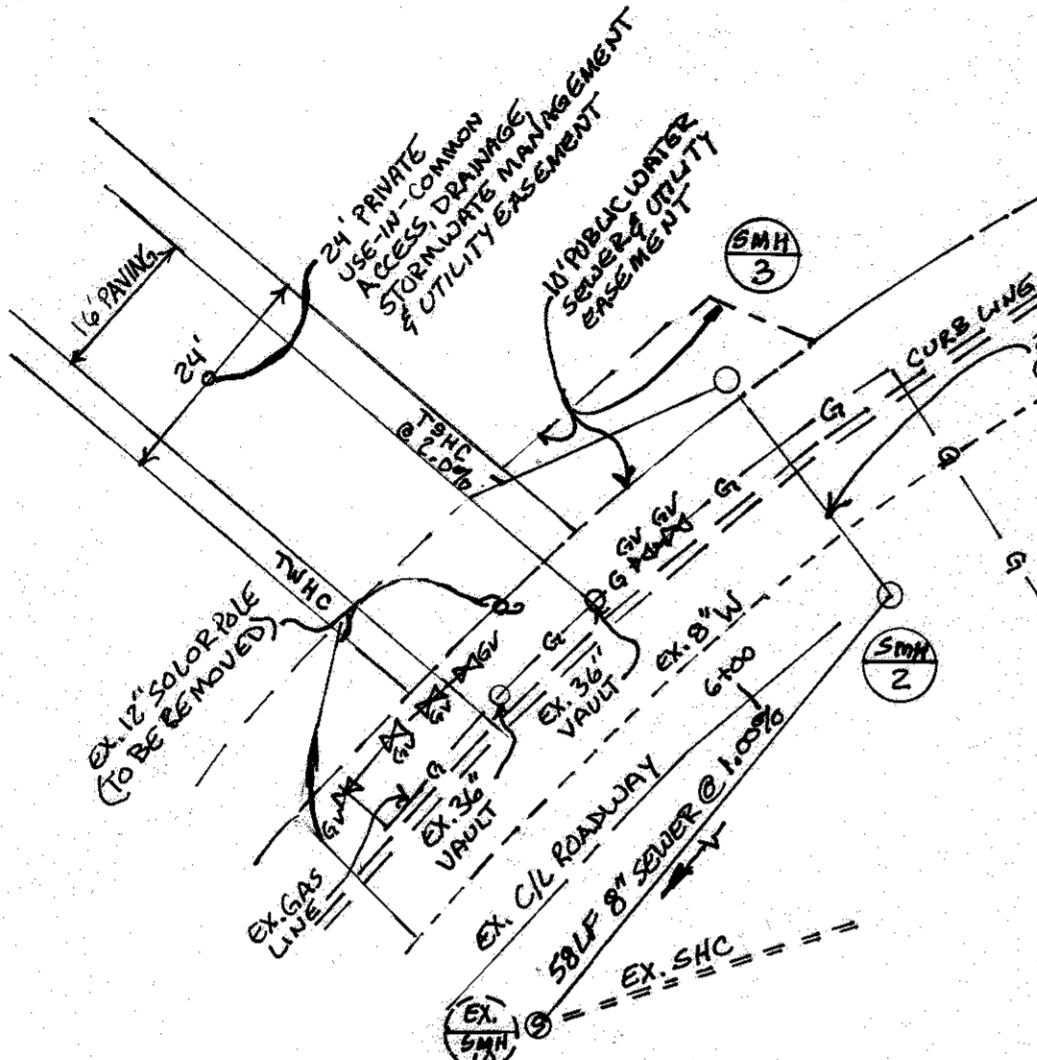
CONTRACT NO. 14-4912-D

TAX MAP: 37 - BLOCK: 14 - PARCELS: 126, 488 AND 530 - ZONED: R-SC - ELECTION DISTRICT: 1

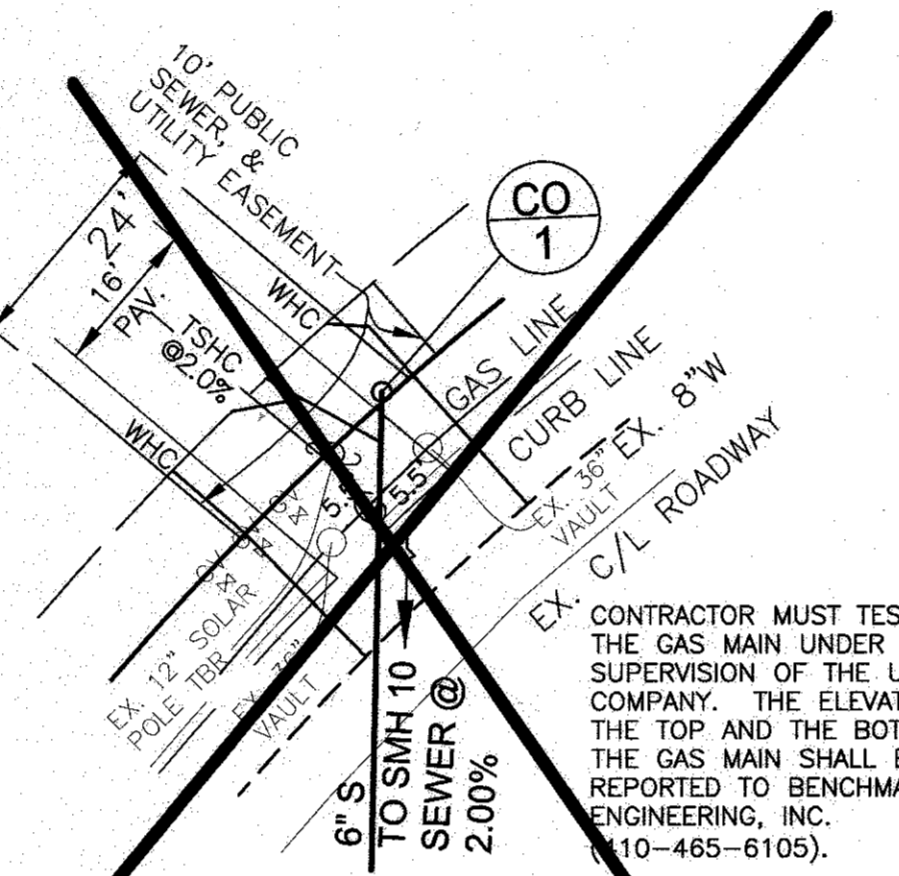
600 SCALE MAP #37 BLOCK: 14 200 SCALE MAP #-

- LEGEND**
- SOILS CLASSIFICATION
 - SOILS DELINEATION
 - EXISTING CONTOURS
 - PROPOSED CONTOURS
 - LIMIT OF WETLANDS
 - EXISTING WOODS LINE
 - PROPOSED WOODS LINE
 - EXISTING STRUCTURE
 - PROPOSED STRUCTURE
 - OVERHEAD UTILITY LINE
 - UNDERGROUND GAS LINE
 - UNDERGROUND ELECTRIC LINE

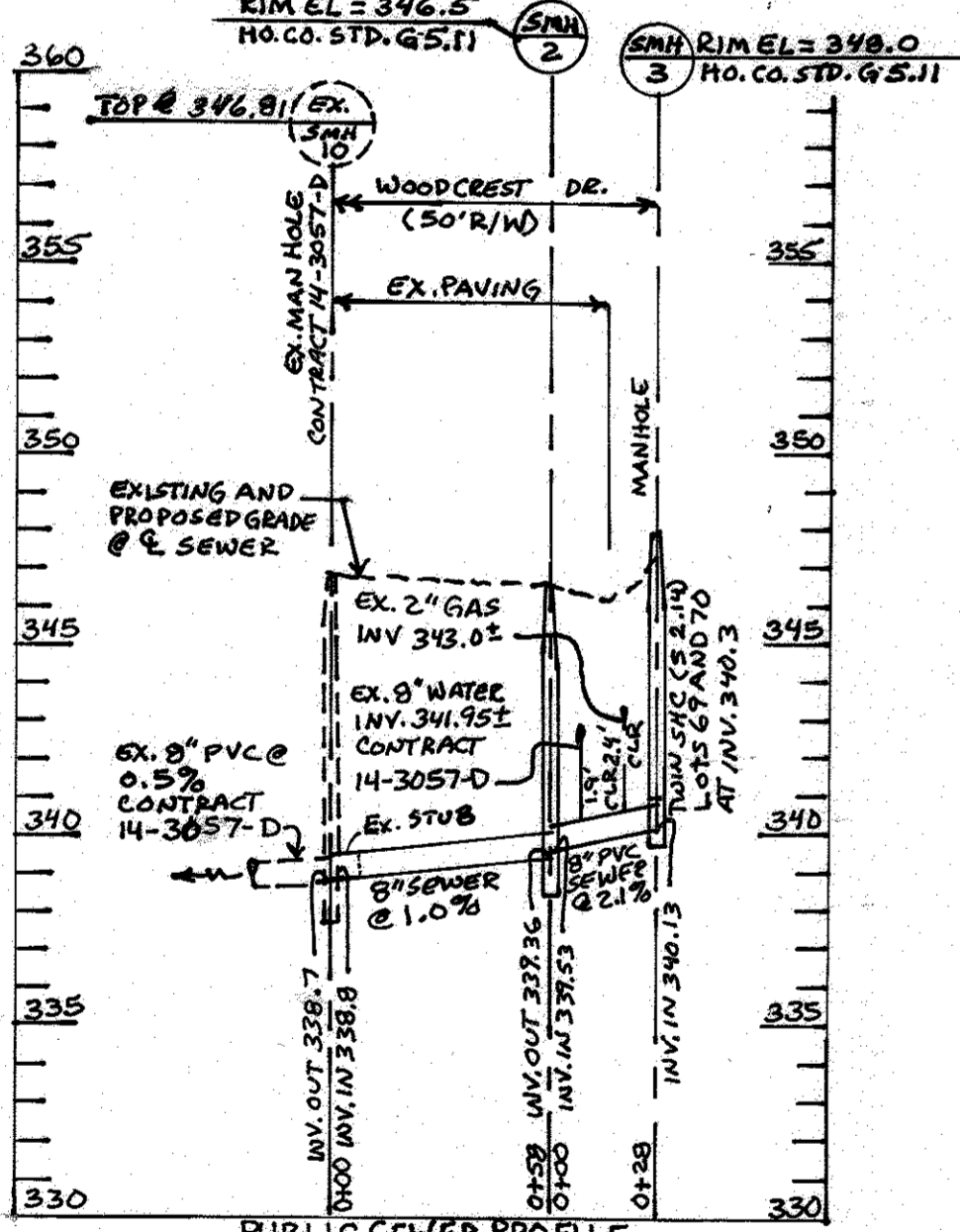
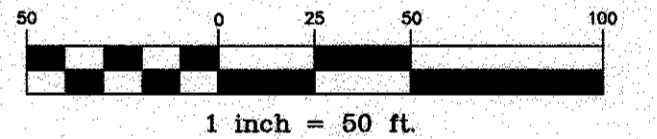
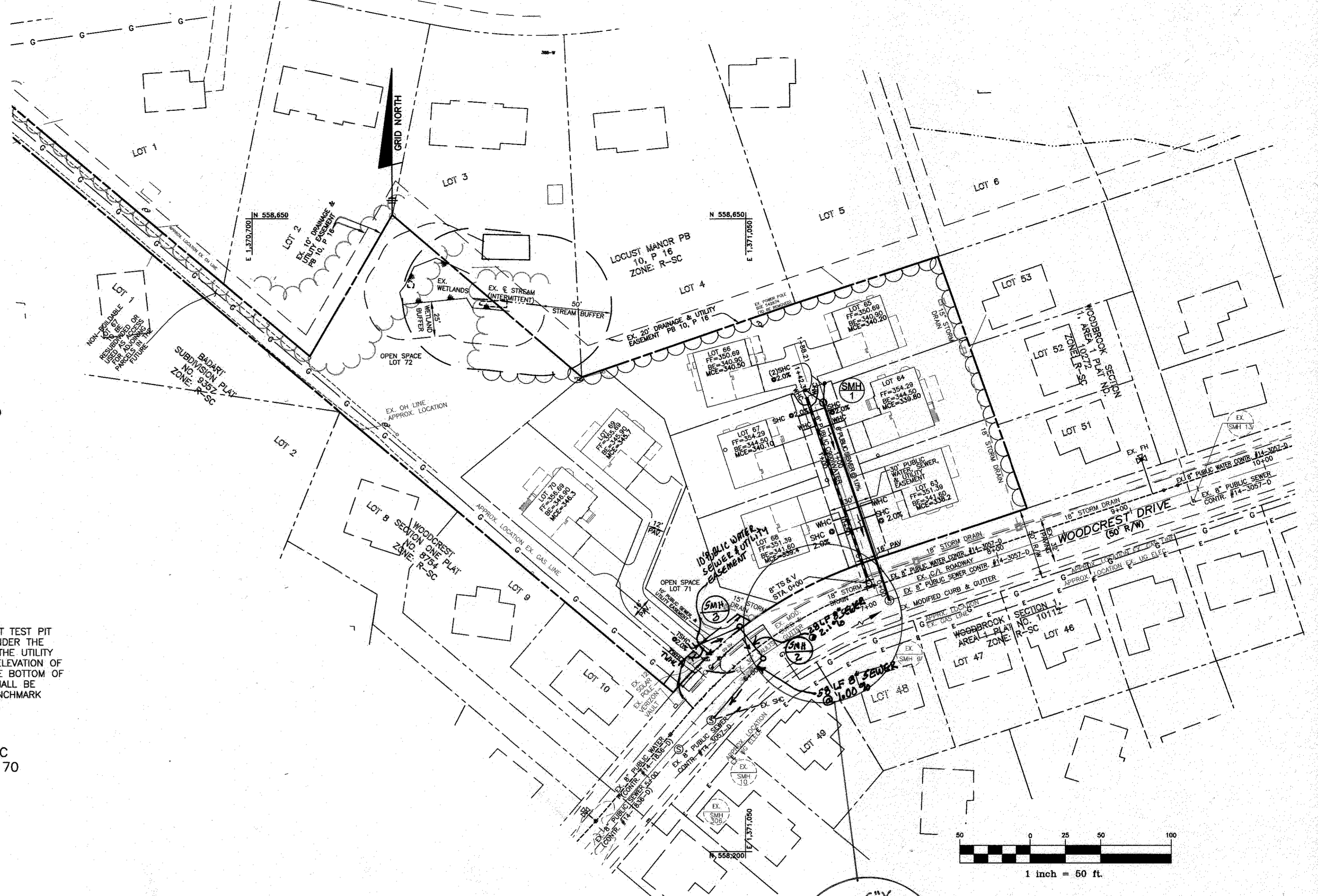
- EXIST. WATER MAIN
- EXIST. SEWER MAIN
- EXIST. SEWER MANHOLE
- EXIST. STORM DRAIN
- PROPOSED SEWER MAIN
- PROPOSED TERMINAL MANHOLE
- PROPOSED SEWER HOUSE CONNECTION
- PROPOSED WATER MAIN
- PROPOSED WATER HOUSE CONNECTION
- PROPOSED VALVE



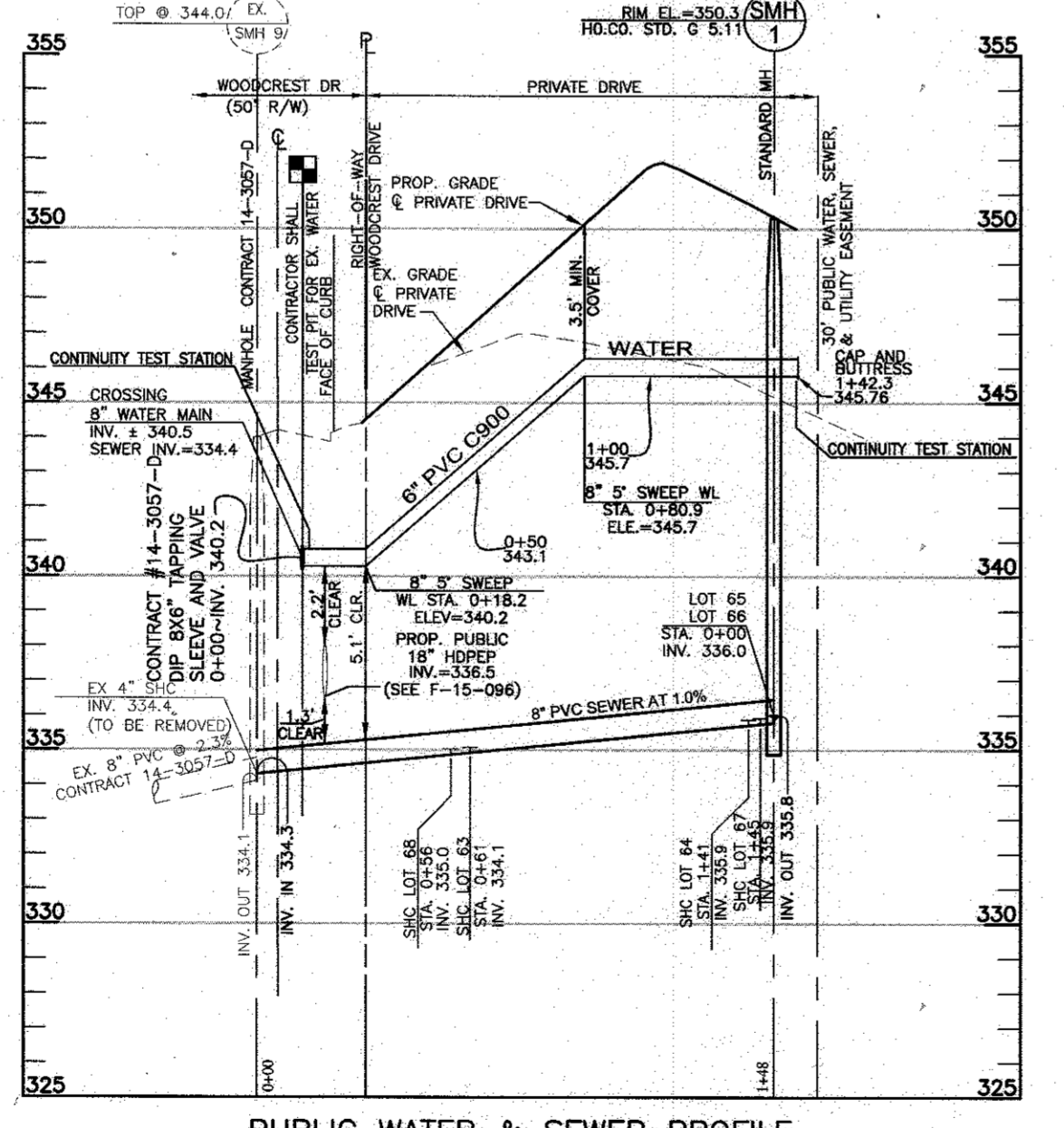
ENLARGEMENT OF FRONTAGE AND PUBLIC HOUSE CONNECTIONS FOR LOTS 69 AND 70
SCALE: 1" = 20'



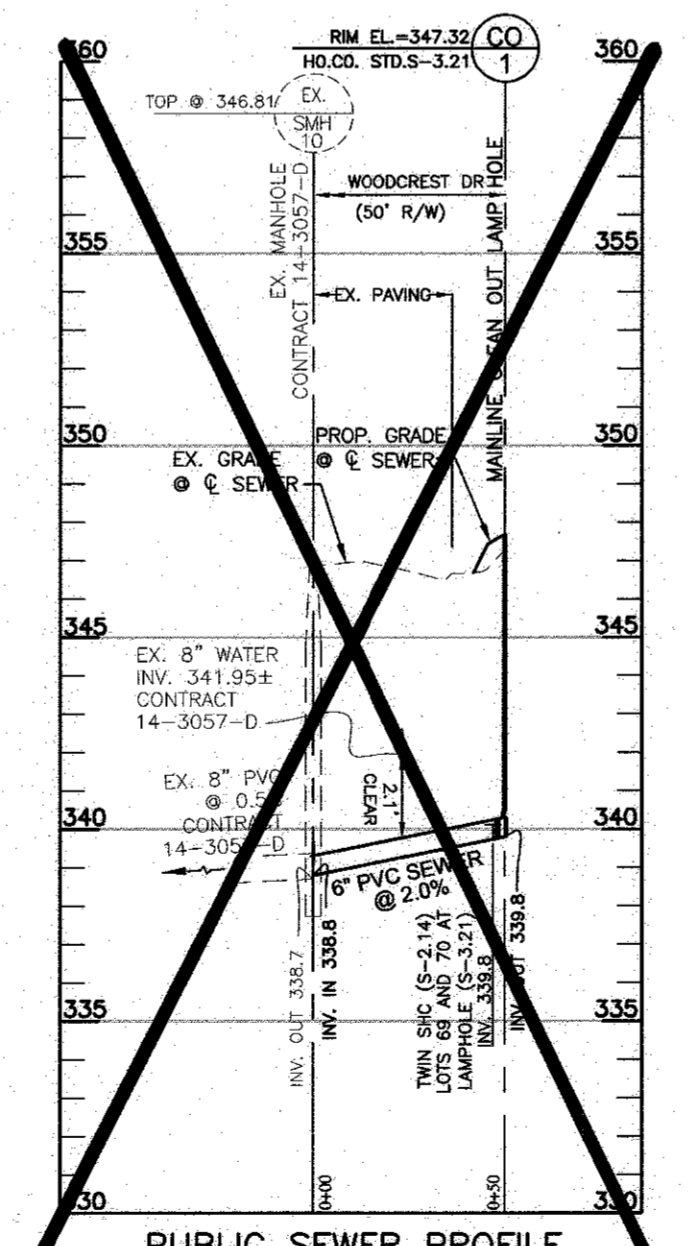
ENLARGEMENT OF FRONTAGE AND PUBLIC HOUSE CONNECTIONS FOR LOTS 69 AND 70
SCALE: 1" = 20'



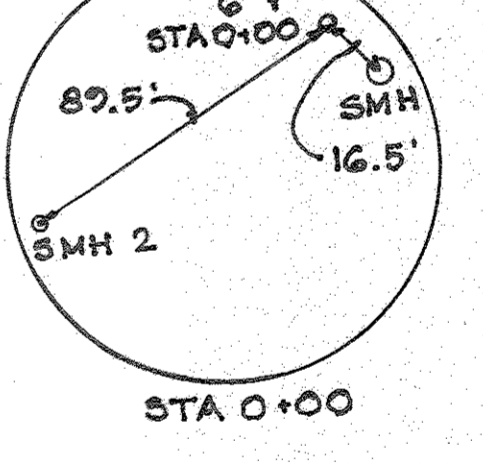
PUBLIC SEWER PROFILE
HORIZONTAL SCALE: 1" = 50'
VERTICAL SCALE: 1" = 5'



PUBLIC WATER & SEWER PROFILE
HORIZONTAL SCALE: 1" = 50'
VERTICAL SCALE: 1" = 5'



PUBLIC SEWER PROFILE
HORIZONTAL SCALE: 1" = 50'
VERTICAL SCALE: 1" = 5'



AS-BUILT

LSK Date 12/5/16

SEWER MANHOLE SCHEDULE					
MANHOLE/CLEANOUT	LOCATION	INV. IN	INV. OUT	TOP ELEV.	NOTES
EX-SMH 9	N 558.378.53 E 1.371.151.48 WOODBROOK DR @ STA. 5+29.34 7.4' RT	334.1	334.1	EX. GROUND 350.3	EX. MH BUILT UNDER CONTRACT #14-3057-D
EX-SMH 10	N 558.293.44 E 1.371.025.85 WOODBROOK DR @ STA. 5+59.8 8.24' RT	338.80	338.70	EX. GROUND 350.3	EX. MH BUILT UNDER CONTRACT #14-3057-D
SMH 1	N 558.519.44 E 1.371.104.87 PRIVATE DRIVE @ STA. 1+43.3 6.3' RT	N/A	335.8	335.3	HO. CO. STD. S-1.31 (TERMINAL)
SMH 2	N 558.358.02 E 1.371.715.73 WOODBROOK DR @ STA. 1+19.2 11.2' RT	339.53	339.36	EX. GROUND 346.5	HO. CO. STD. G-5.12 (MANHOLE)
SMH 3	N 558.360.26 E 1.371.045.21 WOODBROOK DR @ STA. 1+19.2 11.2' RT	N/A	340.13	348.0	HO. CO. STD. S-1.31 (TERMINAL)

THIS PLAN IS APPROVED FOR SOIL EROSION AND SEDIMENT CONTROL BY THE HOWARD SOIL CONSERVATION DISTRICT.

John R. Neichoff
HOWARD SOIL CONSERVATION DISTRICT
DATE

SEDIMENT CONTROL MEASURES FOR THIS CONTRACT WILL BE IMPLEMENTED IN ACCORDANCE WITH SECTION 404 OF THE HOWARD COUNTY STANDARD SPECIFICATIONS AND AS PER F-15-096.

Professional Certifications. I hereby certify that these documents were prepared or approved by me, and that I am a duly licensed professional engineer under the laws of the State of Maryland, License No. 43577, Expiration Date: 06-08-2016.

OWNER:
JOHN R. & CHARLES E. NEICHOFF, ET AL
4936 WHARF ROAD
ELLCOTT CITY, MARYLAND 21043

DEVELOPER:
SECURITY DEVELOPMENT, LLC
P.O. BOX 417
ELLCOTT CITY, MARYLAND 21041
410-465-4244

DEPARTMENT OF PUBLIC WORKS
HOWARD COUNTY, MARYLAND

DEPARTMENT OF PLANNING AND ZONING
HOWARD COUNTY, MARYLAND

BENCHMARK
ENGINEERS & LAND SURVEYORS & PLANNERS
ENGINEERING, INC.
8480 BALTIMORE NATIONAL PIKE & SUITE 418 A ELLICOTT CITY, MARYLAND 21043
(P) 410-465-8105 (F) 410-465-6644
WWW.BEI-CIVLENGINEERING.COM

STATE OF MARYLAND
JOHN M. CARROLL
PROFESSIONAL ENGINEER
NO. 43577
EXPIRES 06/08/2016

DESIGN: JC			
DRAFT: JC			
CHK: -			
DATE: 10/2015	BY: BEI	NO. 1	REVISION: REVISE SHC & WACONLGS 69/70 TO ADD GAS & ELECTRIC COUPLERS
	DATE: 6-1-16		

PLAN VIEW AND PROFILE
PUBLIC WATER & SEWER MAINS

WOODBROOK
SECTION 2
PHASE 1, LOTS 63-65 & PHASE 2, LOTS 66-70

TAX MAP: 37 - BLOCK: 14 - PARCELS: 126, 488 AND 530 - ZONED: R-SC - ELECTION DISTRICT: 1

CONTRACT NO. 14-4912-D

SCALE:
AS SHOWN

SHEET NO.
2 OF 2