

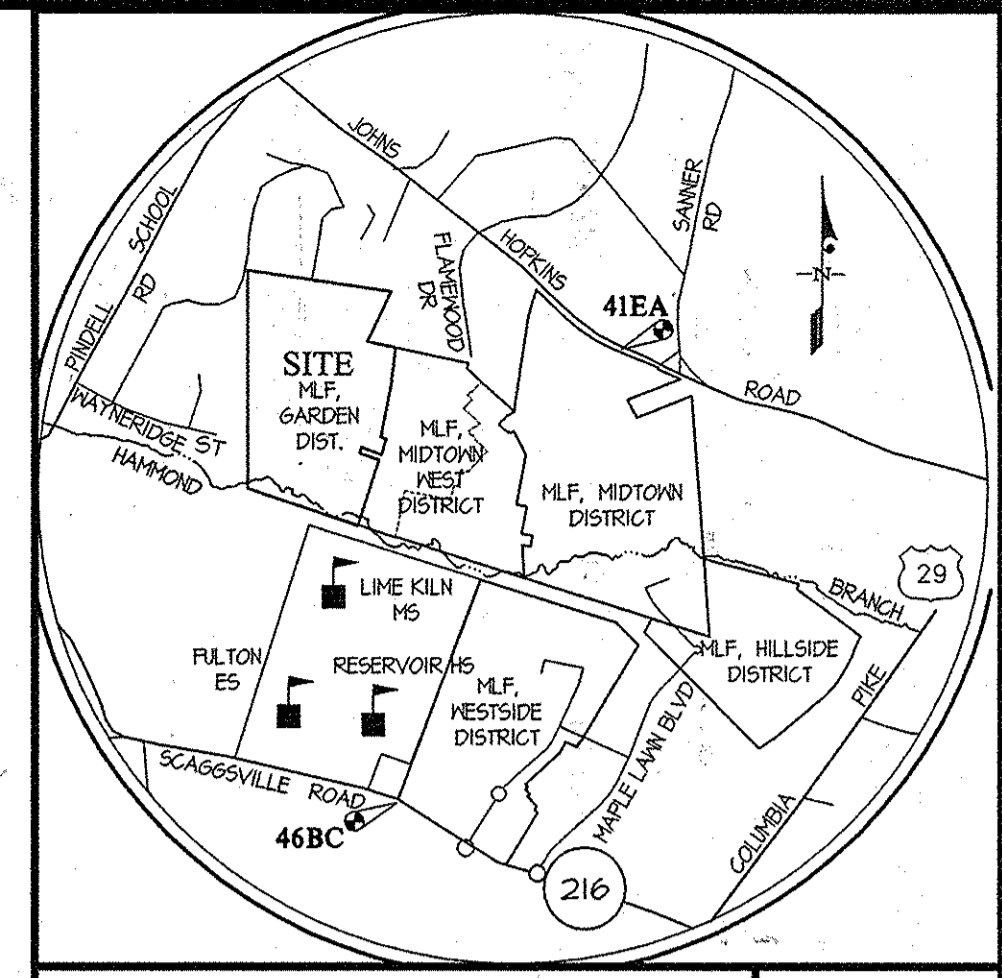
ITEMS	QUANTITIES ESTIMATED	QUANTITIES		
		AS-BUILT	QUANTITIES	AS-BUILT
				MANUFACTURER/SUPPLIER
12" WATER MAIN (D.I.P.)	862 L.F.	849 L.F.	D.I.P. CL54	Atlantic States
8" WATER MAIN (D.I.P.)	3710 L.F.	3608 L.F.	D.I.P. CL54	Atlantic States
6" WATER MAIN (D.I.P.)	71 L.F.	71 L.F.	D.I.P. CL54	Atlantic States
1 1/2" Copper WHC		1218 L.F.	Copper tubing	Mueller Industries
12x6" TEE	3 EA.	2	MJ	Tyler/Union Foundry
8x6" TEE	6 EA.	6	MJ	Tyler/Union Foundry
8" 1/8" HB	2 EA.	2	MJ	Tyler/Union Foundry
8" 1/16" HB	1 EA.	1	MJ	Tyler/Union Foundry
8" 1/32" HB	1 EA.	1	MJ	Tyler/Union Foundry
12" VALVE	3 EA.	4	MJ	Tyler/Union Foundry
8" VALVE	15 EA.	15	MJ	Tyler/Union Foundry
6" VALVE	7 EA.	7	MJ	Tyler/Union Foundry
8" CAP & BUTTRESS	3 EA.	7	MJ	Tyler/Union Foundry
8x6" FHT	6 EA.	6	FH	Mueller Company
12x6" FHT	1 EA.	1	FH	American Flow Control
8" 1/8" V.B.		4	MJ	Tyler/Union Foundry
MANHOLES (STANDARD)	24 EA.	24	SS Structure	Atlantic Concrete Products
MANHOLES (TYPE 'A' DROP)	2 EA.	1	SS Structure	Atlantic Concrete Products
MANHOLES (TYPE 'B' DROP)	2 EA.	2	SS Structure	Atlantic Concrete Products
8" SEWER MAIN (PVC)	3143 L.F.	2996	SDR 35	National Pipe Plastics
8" SEWER MAIN (DIP)	682 L.F.	987	D.I.P. CL54	Atlantic States
4" SHC (PVC)	1516 L.F.	1505	SDR 35	National Pipe Plastics
4" SHC (DIP)	18 L.F.	18	D.I.P. CL54	Atlantic States

NAME OF UTILITY CONTRACTOR: GRAY & SON

SURVEY AND DRAFTING DIV. CHECKBOX: AS-BUILT DATE: 7-28-15

TYPE OF BUILDING	RESIDENTIAL
NUMBER OF UNITS	65
NUMBER OF S.H.C.'s	71 (65 PROP. & 6 FUTURE)
NUMBER OF W.H.C.'s	7 (single unit prop. & 6 future)
AREA OF COMMERCIAL LOT/PARCEL	0.0 AC.
SEWER SHED	LITTLE PATUXENT
PUMPING STATION	N/A

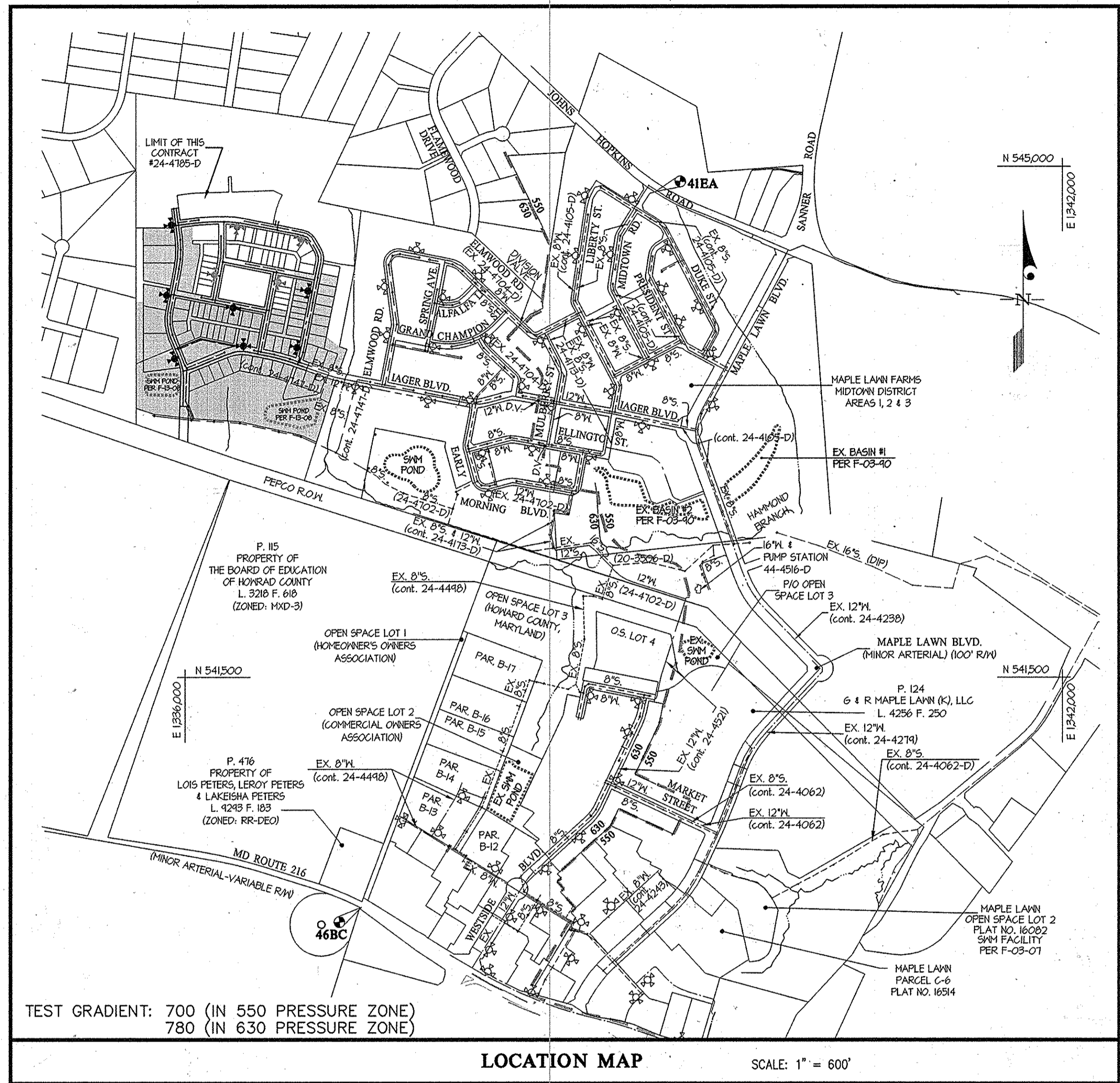
6 SHC'S AND 6 WHC'S ARE CONSTRUCTED UNDER THIS CONTRACT FOR LOTS TO BE BUILT IN THE FUTURE.



VICINITY MAP SCALE: 1" = 2000'

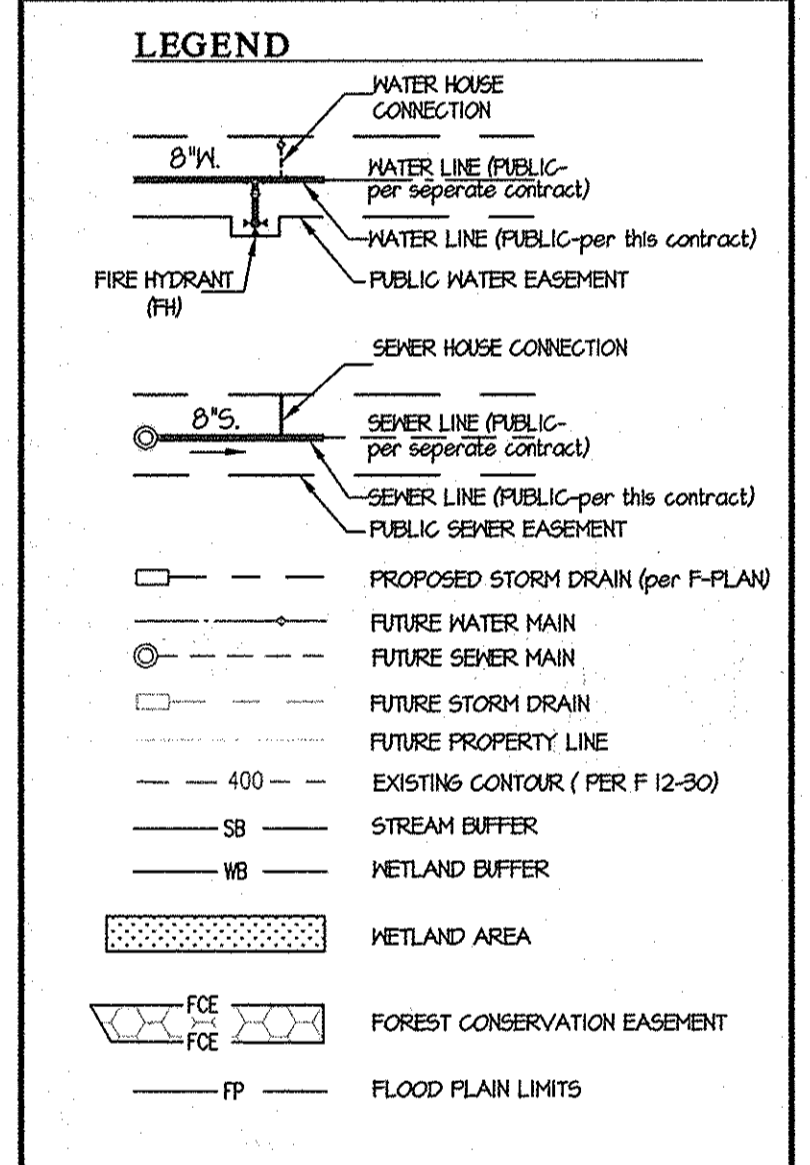
BENCHMARKS

46BC	ELEV. = 47215	41EA	ELEV. = 40765
	N = 33942518 E=133120511		N = 54429281 E=133421144
	STANDARD DISC ON CONCRETE MONUMENT		STANDARD DISC ON CONCRETE MONUMENT



TEST GRADIENT: 700 (IN 550 PRESSURE ZONE) 780 (IN 630 PRESSURE ZONE)

LOCATION MAP SCALE: 1" = 600'



SHEET INDEX

1. WATER and SEWER TITLE SHEET
2. WATER and SEWER PLAN
3. WATER and SEWER PLAN
4. WATER and SEWER PROFILES
5. WATER and SEWER PROFILES
6. WATER and SEWER PROFILES, CHARTS & DETAILS

GENERAL NOTES

1. Approximate locations of existing mains are shown. The contractor shall take all necessary precautions to protect existing mains and services and maintain uninterrupted service. Any damage incurred shall be repaired immediately to the satisfaction of the Engineer at the contractor's expense.
 2. Topographic field surveys were performed on March, 1981 by SDI and then updated by grade checks performed by Gutschick, Little & Weber, PA and based on F 19-008. The boundary information is based upon a field survey prepared by Gutschick, Little & Weber, PA on or about June, 2001.
 3. Horizontal and Vertical Survey Controls:
 - The coordinates shown on the drawings are based on Maryland State Reference System NAD 83/11 as projected by Howard County Geodetic Control Stations No. 46BC and No. 41EA.
 - All vertical controls are based on NAVD 83. Vertical controls provided on the drawings are standard disks on concrete monuments.
 4. All pipe elevations shown are invert elevations unless otherwise noted on the plans.
 5. Clear all utilities by a minimum of 12 inches. Clear all poles by 5'-0" minimum or tunnel as required unless otherwise noted. The owner has contacted the utility companies and has made arrangements for bracing of poles as shown on the drawings. In the event the contractor's work requires the bracing of additional poles, any cost incurred by the owner for the bracing of additional poles or damages shall be deducted from monies owed the contractor. The contractor shall coordinate with the utility companies to schedule the bracing of the poles.
 6. For details not shown on the drawing, and for materials and construction methods, use Howard County Design Manual, Volume IV, Standard Specifications and Details for Construction (Latest Edition). The contractor shall have a copy of Volume IV on the job.
 7. Where test pits have been made on existing utilities, they are noted by the symbol Φ at the locations of the test pits. A note or notes containing the results of the test pit or pits is included on the drawings. Existing utilities in the vicinity of the proposed work for which test pits have not been dug shall be located by the contractor two weeks in advance of construction operations at his own expense.
 8. The contractor shall notify the following utility companies or agencies at least five working days before starting work shown on these plans:

AT&T	1-800-252-1833
BGE (Construction Services)	410-631-8713
BGE (Emergency)	410-685-0123
Bureau of Utilities	410-315-4000
Colonial Pipeline Co.	410-745-1940
Miss Utility	1-800-251-7777
State Highway Administration	410-353-5533
Verizon	1-800-453-0333
 9. Trees and shrubs are to be protected from damage to the maximum extent. Trees and shrubs located within the construction strip are not to be removed or damaged by the contractor.
 10. The contractor shall remove trees, stumps and roots along the line of excavation. Payment for such removal shall be included in the unit price bid for construction of the main.
 11. The contractor shall notify the Bureau of Highways, Howard County, at (410)-315-1450 at least five working days before open cutting or boring/lacking of any County road for laying water/sewer mains or house connections. The approval of these drawings will constitute compliance with DPM requirements per Section 10.14(a) of the Howard County Code.
- Part II WATER
1. All water mains shall be D.I.P. Class 54 unless otherwise noted.
 2. Tops of all water mains shall have a minimum of 3'-6" of cover unless otherwise noted.
 3. Valves adjacent to tees shall be strapped to tees.
 4. All fittings shall be buttressed or anchored with concrete in accordance with Standard Details unless otherwise provided for on the drawings.
 5. Fire hydrants shall be set to the bury line elevations shown on the drawings. All fire hydrants shall be installed in accordance with Standard Details. The soil around the fire hydrant shall be compacted in accordance with Section 1000 and Section 1005 of the Standard Specifications.
 6. The contractor shall not operate any water main valves on the existing water system.
 7. Tracer wires and continuity test stations shall be installed on all DIP and PVC water mains in accordance with the Howard County Design Manual.
 8. For PVC water mains, all records for the Quality Control and Qualification Test Requirements noted in Section 51 of the APWA Standard C400 for PVC pressure pipe shall be submitted with the pipe material certifications or shop drawings prior to approval of the material for use. The test records shall be for the pipe to be installed under this contract. All PVC pipe shall contain markings to allow cross referencing of the pipe records received.
 9. Unless otherwise noted on the plans or in the specifications sacrificial anodes shall be installed on all valves and metallic fittings used with PVC water mains in accordance with Volume IV, Standard Specifications and Details for Construction. Seventeen (17) pound Magnesium anodes shall be installed on all valves and ductile iron fittings including restraints and harnesses. Twelve (12) pound Zinc anodes shall be installed on all stainless steel fittings and saddles used with PVC mains. All "tees" used with PVC mains shall be ductile iron.
 10. Proper Assembly of Gasketed PVC Pipe Joints: The manufacturer's insertion line of gasketed PVC pipe joints indicates the maximum depth of insertion of the spigot into the bell. After assembly of the joint, the insertion line shall remain visible. Dial insertion lines on gasketed PVC pipe indicate the maximum and minimum depth of the spigot into the bell. The contractor shall not over insert or over home the spigot into the bell of PVC pipe.
 11. All changes in horizontal or vertical direction of PVC water pipe shall be made with standard bends, 5-degree sweeps or high deflection (HD) couplings. No bending of the pipe or deflecting of PVC pipe joints is permitted. Where high deflection couplings or 5-degree sweeps are permitted, the contractor shall provide one full pipe length (20-foot long) on either side of the high deflection coupling or 5-degree sweep. The contractor shall use a vibratory plate compactor or other approved means to thoroughly compact the #57 stone on both sides of the high deflection coupling or 5-degree sweep, taking care not to use compaction equipment directly over the fitting.

PVC high deflection couplings shall be limited to a total deflection of 3-degrees (1/4-degree on either end of the coupling), shall be rated for a minimum 200 psi meeting the requirements of APWA C400 shall have a minimum lay length of 4-inches and shall have center stops. PVC high deflection couplings shall be CertainTeed PVC High Deflection (HD) Stop Couplings or equal. Five degree sweeps shall be bell by spigot, rated for a minimum 225 psi, DR18 meeting the requirements of APWA C400 and shall be MHI Fittings (pex) Blue Brute DR18 or equal.
 12. When PVC high deflection couplings or PVC 5-degree sweeps are used to facilitate changes in horizontal or vertical alignments of APWA C-400 PVC pipelines, the contractor shall install devices for the prevention of over-insertion of the PVC pipe spigots or plan ends into the push on bell joint on both sides of the high deflection couplings and 5 degree sweeps. Bell stops shall be placed at the proper insertion line for the fitting. The bell stop shall be manufactured of ductile iron and incorporate an expansion retention spring to allow for pipe expansion and contraction. The bell stops shall be Series 5000 Mega-Stop, as manufactured by EBAA Iron, Inc. or approved equal.
- Part III SEWER
1. All sewer mains shall be D.I.P. or P.V.C. unless otherwise noted.
 2. All manholes shall be 4'-0" inside diameter unless otherwise noted.
 3. Force mains shall be D.I.P. only.
 4. Manholes shown with 12" and 16" walls are for brick manholes only.
 5. Manholes designated N.T. in plan and profile shall have watertight frame and cover, Standard Detail 6552. Where watertight manhole frames and covers are used, set top of frame 1'-6" above finished grade unless otherwise noted on the drawings.
 6. House(s) with the symbol "C.N.S." indicates that the cellar cannot be served.

CONTRACT No. 24-4785-D (PHASE 1)
 MAPLE LAWN FARMS
 GARDEN DISTRICT - AREA 1
 LOTS 2 thru 45 and LOTS 78 thru 98
 OPEN SPACE LOTS 99,100 and LOTS 106 thru 108
 COMMON OPEN AREA LOT 112
 and NON-BUILDABLE BULK PARCEL 'Z'
 HOWARD COUNTY, MARYLAND
 DEPARTMENT OF PUBLIC WORKS

SEDIMENT CONTROL MEASURES WILL BE IMPLEMENTED IN ACCORDANCE WITH SECTION 309 OF THE SPECIFICATIONS AND WITH ROAD DRAWINGS F 14-033, FOR SEDIMENT AND EROSION CONTROL.

REVIEWED FOR HOWARD SOIL CONSERVATION DISTRICT AND MEETS TECHNICAL REQUIREMENT.

SIGNATURE: _____ DATE: _____

U.S.D.A. NATURAL RESOURCES CONSERVATION SERVICE

THIS DEVELOPMENT PLAN IS APPROVED FOR SOIL EROSION AND SEDIMENT CONTROL BY THE HOWARD SOIL CONSERVATION DISTRICT.

APPROVED: _____ DATE: 5/6/14

HOWARD S.C.D.

DEPARTMENT OF PUBLIC WORKS
 HOWARD COUNTY, MARYLAND

DEPARTMENT OF PLANNING AND ZONING
 HOWARD COUNTY, MARYLAND

GLW GUTSCHICK LITTLE & WEBER, P.A.
 CIVIL ENGINEERS, LAND SURVEYORS, LAND PLANNERS, LANDSCAPE ARCHITECTS
 3909 NATIONAL DRIVE - SUITE 250 - BURTONSVILLE OFFICE PARK
 BURTONSVILLE, MARYLAND 20886
 TEL: 301-421-4024 BALT: 410-880-1820 DC/VA: 301-989-2524 FAX: 301-421-4186

DATE: APRIL, 2014

PROFESSIONAL CERTIFICATION

I HEREBY CERTIFY THAT THESE PLANS WERE PREPARED OR APPROVED BY ME, AND THAT I AM A DULY LICENSED PROFESSIONAL ENGINEER UNDER THE LAWS OF THE STATE OF MARYLAND, LICENSE NO. 12975, EXP. DATE: MAY 26, 2014

BY: _____ NO. _____ REVISION _____ DATE: 11-13-2014

600' SCALE MAP NO. 41 BLOCK NO.14,15,20&21

DEPARTMENT OF PUBLIC WORKS
 HOWARD COUNTY, MARYLAND

DEPARTMENT OF PLANNING AND ZONING
 HOWARD COUNTY, MARYLAND

GLW GUTSCHICK LITTLE & WEBER, P.A.
 CIVIL ENGINEERS, LAND SURVEYORS, LAND PLANNERS, LANDSCAPE ARCHITECTS
 3909 NATIONAL DRIVE - SUITE 250 - BURTONSVILLE OFFICE PARK
 BURTONSVILLE, MARYLAND 20886
 TEL: 301-421-4024 BALT: 410-880-1820 DC/VA: 301-989-2524 FAX: 301-421-4186

DATE: APRIL, 2014

PROFESSIONAL CERTIFICATION

I HEREBY CERTIFY THAT THESE PLANS WERE PREPARED OR APPROVED BY ME, AND THAT I AM A DULY LICENSED PROFESSIONAL ENGINEER UNDER THE LAWS OF THE STATE OF MARYLAND, LICENSE NO. 12975, EXP. DATE: MAY 26, 2014

BY: _____ NO. _____ REVISION _____ DATE: 11-13-2014

600' SCALE MAP NO. 41 BLOCK NO.14,15,20&21

DEPARTMENT OF PUBLIC WORKS
 HOWARD COUNTY, MARYLAND

DEPARTMENT OF PLANNING AND ZONING
 HOWARD COUNTY, MARYLAND

GLW GUTSCHICK LITTLE & WEBER, P.A.
 CIVIL ENGINEERS, LAND SURVEYORS, LAND PLANNERS, LANDSCAPE ARCHITECTS
 3909 NATIONAL DRIVE - SUITE 250 - BURTONSVILLE OFFICE PARK
 BURTONSVILLE, MARYLAND 20886
 TEL: 301-421-4024 BALT: 410-880-1820 DC/VA: 301-989-2524 FAX: 301-421-4186

DATE: APRIL, 2014

PROFESSIONAL CERTIFICATION

I HEREBY CERTIFY THAT THESE PLANS WERE PREPARED OR APPROVED BY ME, AND THAT I AM A DULY LICENSED PROFESSIONAL ENGINEER UNDER THE LAWS OF THE STATE OF MARYLAND, LICENSE NO. 12975, EXP. DATE: MAY 26, 2014

BY: _____ NO. _____ REVISION _____ DATE: 11-13-2014

600' SCALE MAP NO. 41 BLOCK NO.14,15,20&21

DEPARTMENT OF PUBLIC WORKS
 HOWARD COUNTY, MARYLAND

DEPARTMENT OF PLANNING AND ZONING
 HOWARD COUNTY, MARYLAND

GLW GUTSCHICK LITTLE & WEBER, P.A.
 CIVIL ENGINEERS, LAND SURVEYORS, LAND PLANNERS, LANDSCAPE ARCHITECTS
 3909 NATIONAL DRIVE - SUITE 250 - BURTONSVILLE OFFICE PARK
 BURTONSVILLE, MARYLAND 20886
 TEL: 301-421-4024 BALT: 410-880-1820 DC/VA: 301-989-2524 FAX: 301-421-4186

DATE: APRIL, 2014

PROFESSIONAL CERTIFICATION

I HEREBY CERTIFY THAT THESE PLANS WERE PREPARED OR APPROVED BY ME, AND THAT I AM A DULY LICENSED PROFESSIONAL ENGINEER UNDER THE LAWS OF THE STATE OF MARYLAND, LICENSE NO. 12975, EXP. DATE: MAY 26, 2014

BY: _____ NO. _____ REVISION _____ DATE: 11-13-2014

600' SCALE MAP NO. 41 BLOCK NO.14,15,20&21

DEPARTMENT OF PUBLIC WORKS
 HOWARD COUNTY, MARYLAND

DEPARTMENT OF PLANNING AND ZONING
 HOWARD COUNTY, MARYLAND

GLW GUTSCHICK LITTLE & WEBER, P.A.
 CIVIL ENGINEERS, LAND SURVEYORS, LAND PLANNERS, LANDSCAPE ARCHITECTS
 3909 NATIONAL DRIVE - SUITE 250 - BURTONSVILLE OFFICE PARK
 BURTONSVILLE, MARYLAND 20886
 TEL: 301-421-4024 BALT: 410-880-1820 DC/VA: 301-989-2524 FAX: 301-421-4186

DATE: APRIL, 2014

PROFESSIONAL CERTIFICATION

I HEREBY CERTIFY THAT THESE PLANS WERE PREPARED OR APPROVED BY ME, AND THAT I AM A DULY LICENSED PROFESSIONAL ENGINEER UNDER THE LAWS OF THE STATE OF MARYLAND, LICENSE NO. 12975, EXP. DATE: MAY 26, 2014

BY: _____ NO. _____ REVISION _____ DATE: 11-13-2014

600' SCALE MAP NO. 41 BLOCK NO.14,15,20&21

DEPARTMENT OF PUBLIC WORKS
 HOWARD COUNTY, MARYLAND

DEPARTMENT OF PLANNING AND ZONING
 HOWARD COUNTY, MARYLAND

GLW GUTSCHICK LITTLE & WEBER, P.A.
 CIVIL ENGINEERS, LAND SURVEYORS, LAND PLANNERS, LANDSCAPE ARCHITECTS
 3909 NATIONAL DRIVE - SUITE 250 - BURTONSVILLE OFFICE PARK
 BURTONSVILLE, MARYLAND 20886
 TEL: 301-421-4024 BALT: 410-880-1820 DC/VA: 301-989-2524 FAX: 301-421-4186

DATE: APRIL, 2014

PROFESSIONAL CERTIFICATION

I HEREBY CERTIFY THAT THESE PLANS WERE PREPARED OR APPROVED BY ME, AND THAT I AM A DULY LICENSED PROFESSIONAL ENGINEER UNDER THE LAWS OF THE STATE OF MARYLAND, LICENSE NO. 12975, EXP. DATE: MAY 26, 2014

BY: _____ NO. _____ REVISION _____ DATE: 11-13-2014

600' SCALE MAP NO. 41 BLOCK NO.14,15,20&21

DEPARTMENT OF PUBLIC WORKS
 HOWARD COUNTY, MARYLAND

DEPARTMENT OF PLANNING AND ZONING
 HOWARD COUNTY, MARYLAND

GLW GUTSCHICK LITTLE & WEBER, P.A.
 CIVIL ENGINEERS, LAND SURVEYORS, LAND PLANNERS, LANDSCAPE ARCHITECTS
 3909 NATIONAL DRIVE - SUITE 250 - BURTONSVILLE OFFICE PARK
 BURTONSVILLE, MARYLAND 20886
 TEL: 301-421-4024 BALT: 410-880-1820 DC/VA: 301-989-2524 FAX: 301-421-4186

DATE: APRIL, 2014

PROFESSIONAL CERTIFICATION

I HEREBY CERTIFY THAT THESE PLANS WERE PREPARED OR APPROVED BY ME, AND THAT I AM A DULY LICENSED PROFESSIONAL ENGINEER UNDER THE LAWS OF THE STATE OF MARYLAND, LICENSE NO. 12975, EXP. DATE: MAY 26, 2014

BY: _____ NO. _____ REVISION _____ DATE: 11-13-2014

600' SCALE MAP NO. 41 BLOCK NO.14,15,20&21

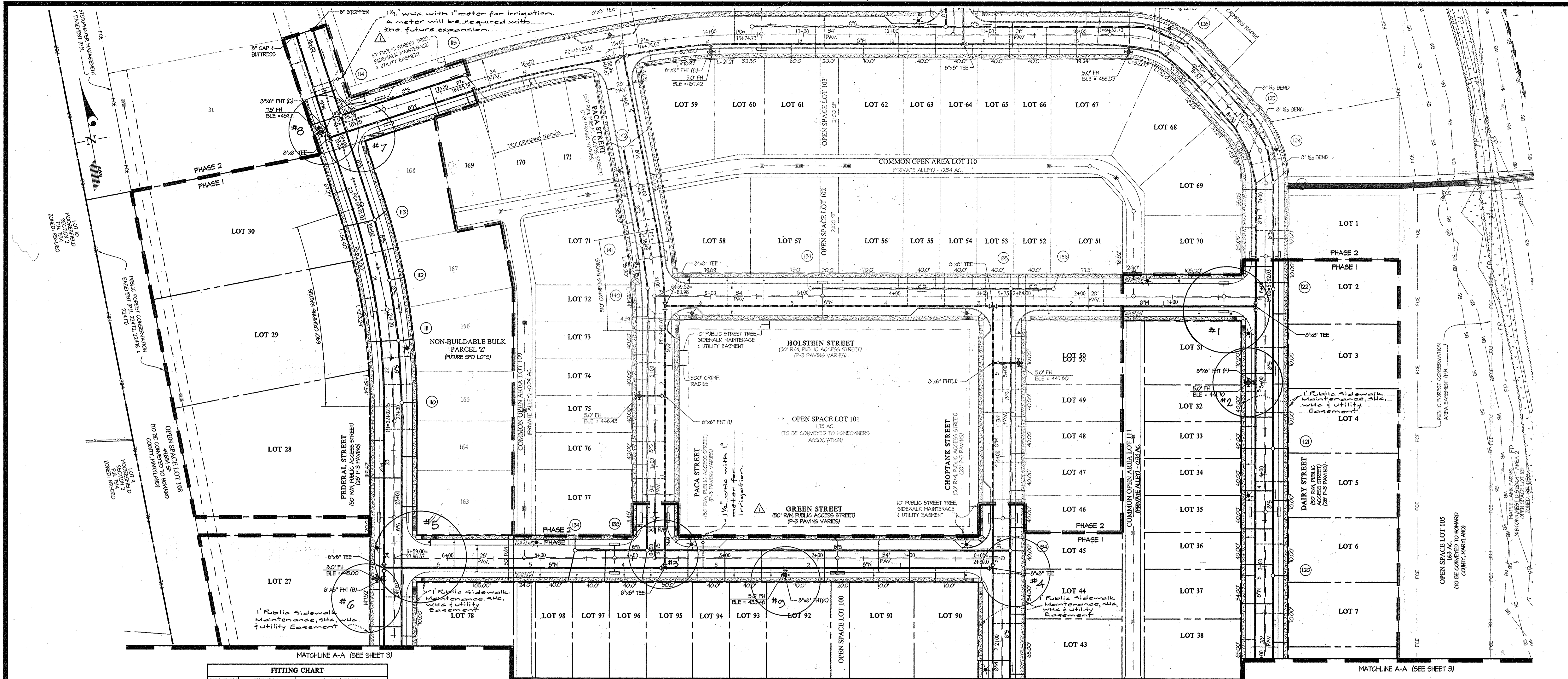
PREPARED FOR:
 MAPLE LAWN FARMS I, LLC
 SUITE 300 WOODHOLME CENTER
 1829 REISTERSTOWN ROAD
 BALTIMORE, MD 21208
 ATTN: MARK BENNETT
 410-484-8400

MAPLE LAWN FARMS
 CONTRACT NO. 24-4785-D (PHASE 1)
 GARDEN DISTRICT - AREA 1
 LOTS 2 thru 45 and LOTS 78 thru 98
 OPEN SPACE LOTS 99, 100 and LOTS 105 thru 110
 COMMON OPEN AREA LOTS 111 and 112
 AND NON-BUILDABLE BULK PARCELS 'X' and 'Z'
 HOWARD COUNTY, MARYLAND
 ELECTION DISTRICT No. 5

SCALE: AS SHOWN

SHEET: 1 OF 6

14-CADD-DRAWINGS-120019-PLANS BY GLW/PAL/MALES/PHASE 1 (24-4785-D) (PWS) 2/20/14 I.P.S. COVER SHEET (REV. 4/27/2014) 6:09 PM LAST SAVED: 4/27/2014 6:08 PM PLOTTED BY: Dong, Wenbo PXL



FITTING CHART

STATION	FITTING	LOCATION
DAIRY STREET		
0+00.00	12"x8" TEE	N 543644.01 E 1336768.26
0+47.87	8" 1/8" HB	N 5436094.22 E 1336784.01
0+62.04	8" 1/8" HB	N 543701.05 E 1336771.74
5+44.78	8"x8" TEE	N 544223.72 E 1336804.40
18+21.84	8"x8" TEE	N 544944.66 E 1335935.54
FEDERAL STREET		
0+00.00	8"x8" TEE	N 544563.11 E 1336628.30
0+54.01	8" CAP	N 544621.03 E 1336634.62
14+34.51	8"x8" TEE	N 544944.66 E 1335935.54
24+13.34	8"x8" TEE	N 544125.72 E 1335904.53
28+00.60	8"x8" TEE	N 543750.26 E 1335832.14
24+61.51	12"x8" TEE	N 543980.41 E 1335955.67
31+47.58	8" CAP	N 543363.17 E 1335984.26
IAGER BOULEVARD		
0+63.59	12"x8" TEE	N 543644.01 E 1336768.26
3+35.57	12"x8" TEE	N 543751.71 E 1336495.42
4+25.60	8" 1/2" HB	N 543750.29 E 1336407.57
4+74.72	8" 1/2" HB	N 543752.86 E 1336398.44
8+71.82	12"x8" TEE	N 543980.41 E 1335955.67
CHOPTANK STREET		
0+00.00	12"x8" TEE	N 543751.71 E 1336495.42
2+84.00	8"x8" TEE	N 543994.42 E 1336551.31
GREEN STREET		
0+00.00	8"x8" TEE	N 543994.42 E 1336551.31
3+55.07	8"x8" TEE	N 544067.46 E 1336202.90
6+54.00	8"x8" TEE	N 54425.72 E 1335904.53
HOLSTEIN STREET		
0+00.00	8"x8" TEE	N 544223.72 E 1336804.40
PACA STREET		
0+00.00	8"x8" TEE	N 544067.46 E 1336202.90

FIRE HYDRANT TEE INFORMATION

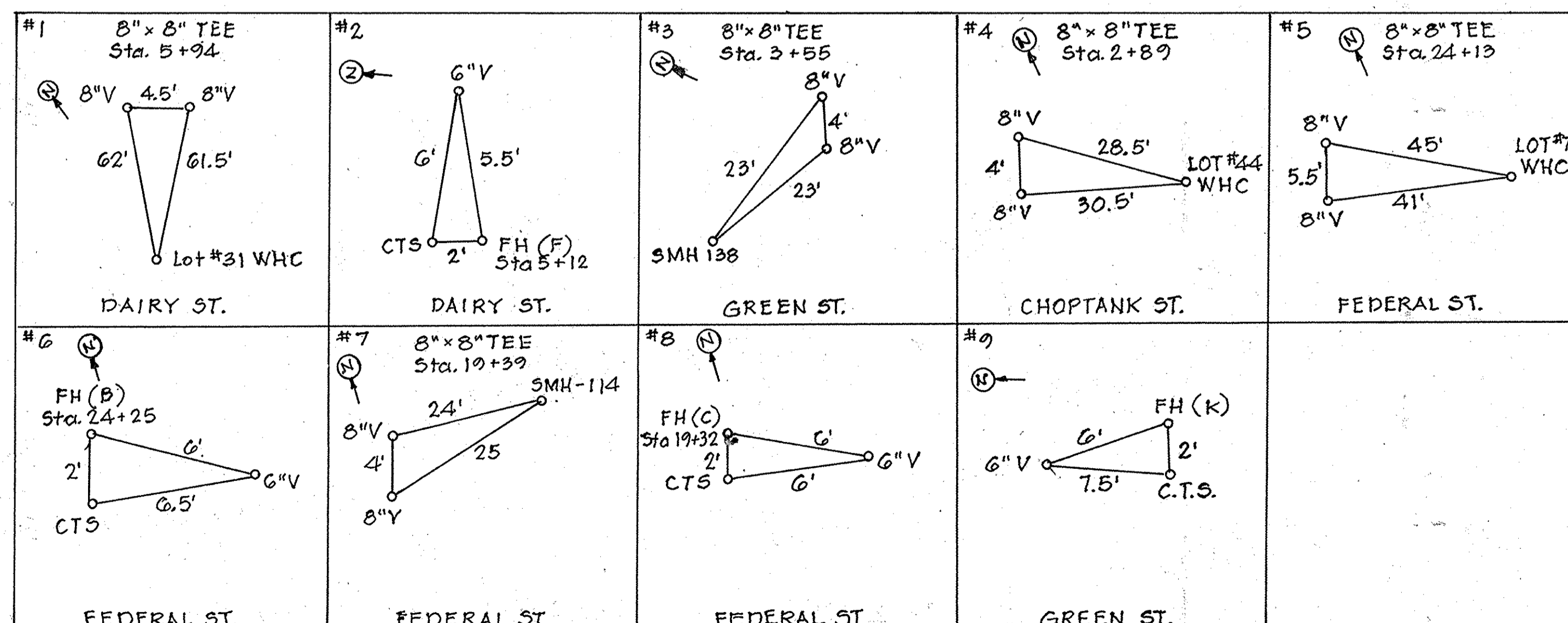
FHT	LOCATION
(A) # 12	N 543645.46 E 1335954.64
(B) # 6	N 54418.95 E 1335402.23
(C) # 8	N 544602.80 E 1335434.56
(F) # 2	N 54442.80 E 1336668.68
(G) # 16	N 543753.24 E 1336742.34
(H) # 14	N 543733.00 E 1336348.70
(K) # 9	N 544042.46 E 1336330.42

SEWER MANHOLE INFORMATION

MH	LOCATION
100	N 543941.24 E 1336004.09
101	N 543620.81 E 1336010.45
102	N 543726.66 E 1336264.20
103	N 543630.55 E 1335940.66
104	N 543748.24 E 1335953.51
105	N 543813.02 E 1336110.43
106	N 543711.51 E 1336324.14
107	N 543846.54 E 1335913.04
108	N 543919.43 E 1335947.24
109	N 543980.36 E 1335949.31
110	N 544247.61 E 1335951.41
111	N 544364.64 E 1335966.82
112	N 544430.30 E 1335964.75
113	N 544447.24 E 1335966.42

SEWER MANHOLE INFORMATION

MH	LOCATION
114	N 544615.25 E 1335952.07
115	N 544639.18 E 1336092.22
116	N 543654.01 E 1336782.47
117	N 543720.30 E 1336807.11
118	N 543935.69 E 1336847.20
119	N 544068.95 E 1336873.62
120	N 544298.72 E 1336406.77
121	N 543682.25 E 1336716.17
122	N 54373.05 E 1336608.48
123	N 543730.74 E 1336518.17
124	N 543734.86 E 1336471.13
125	N 544041.41 E 1336573.65
126	N 544084.75 E 1336187.24
127	N 544104.72 E 1336111.23



NOTES

- ALL SHOWN SERVING NUMBERED LOTS ARE 4'.
- ALL MANHOLES WILL BE STANDARD 4'-0" (6 5/12).
- OUTSIDE METERS WILL BE PER HOWARD CO. DETAIL M 332 FOR TWIN CONNECTIONS AND DETAIL M 328 FOR SINGLE CONNECTIONS.
- ALL P-H'S SERVING NUMBERED LOTS ARE 1 1/2" WITH A 1" METER OUTSIDE SETTING.
- FOR MINIMUM CELLAR ELEVATIONS, SEE SHEET 6.
- FOR AS-BUILT INFORMATION, SEE SHEET 6.
- STORM DRAIN BOTH PLAN AND PROFILE WILL BE CONSTRUCTED UNDER F 14-033.
- P-5 PAVING WILL BE USED IN IAGER BOULEVARD AND P-3 PAVING WILL BE USED FOR ALL OTHER PUBLIC STREETS.

FOR PROFILE INFORMATION, SEE SHEETS 4 THROUGH 6

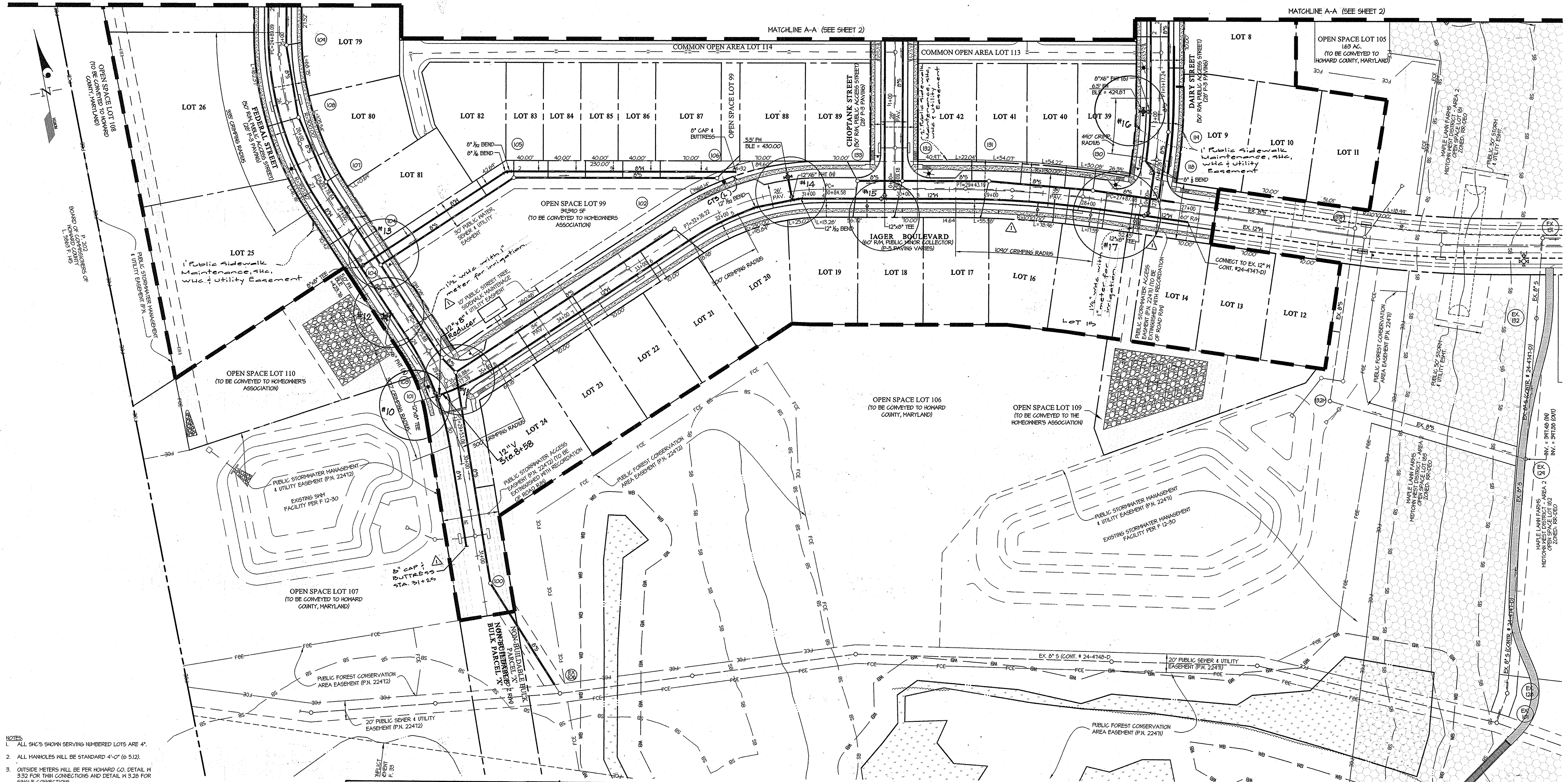
PREPARED FOR:
 MAPLE LAWN FARMS I, LLC
 SUITE 300 WOODHOLME CENTER
 1829 REGISTERSTOWN ROAD
 BALTIMORE, MD 21208
 ATTN: MARK BENNETT
 410-484-8400

DEPARTMENT OF PUBLIC WORKS HOWARD COUNTY, MARYLAND DATE: 5.15.14 CHIEF, BUREAU OF UTILITIES	DEPARTMENT OF PLANNING AND ZONING HOWARD COUNTY, MARYLAND DATE: 5.15.14 CHIEF, DEVELOPMENT ENGINEERING DIVISION	GLW GUTSCHICK LITTLE & WEBER, P.A. CIVIL ENGINEERS, LAND SURVEYORS, LAND PLANNERS, LANDSCAPE ARCHITECTS 3909 NATIONAL DRIVE - SUITE 250 - BURTONSVILLE OFFICE PARK BURTONSVILLE, MARYLAND 20868 TEL: 301-421-4024 BALT: 410-880-1820 DC/VA: 301-988-2524 FAX: 301-421-4186	DATE: APRIL, 2014 G.L.W. No. 12001 PROFESSIONAL CERTIFICATION I HEREBY CERTIFY THAT THESE PLANS WERE PREPARED OR APPROVED BY ME, AND THAT I AM A DULY LICENSED PROFESSIONAL ENGINEER UNDER THE LAWS OF THE STATE OF MARYLAND, LICENSE NO. 12075 EXP. DATE: MAY 26, 2018	REVISION: 11.18.2014 BY: NO REVISION: 4/24/14	MAPLE LAWN FARMS CONTRACT NO. 24-4785-D (PHASE I) GARDEN DISTRICT - AREA 1 LOTS 2 thru 45 and LOTS 78 thru 98 COMMON OPEN AREA LOTS 111 and 112 AND NON-BUILDABLE BULK PARCELS 'X' and 'Z' HOWARD COUNTY, MARYLAND ELECTION DISTRICT No. 5	SCALE: 1" = 50' SHEET: 2 OF 6
------------------------------------------------------------------------------------------------------	--------------------------------------------------------------------------------------------------------------------------	---------------------------------------------------------------------------------------------------------------------------------------------------------------------------------------------------------------------------------------------------------------------------------------------------	-------------------------------------------------------------------------------------------------------------------------------------------------------------------------------------------------------------------------------------------------------------------------------------	-----------------------------------------------------	------------------------------------------------------------------------------------------------------------------------------------------------------------------------------------------------------------------------------------------------------------------------	----------------------------------

MATCHLINE A-A (SEE SHEET 2)

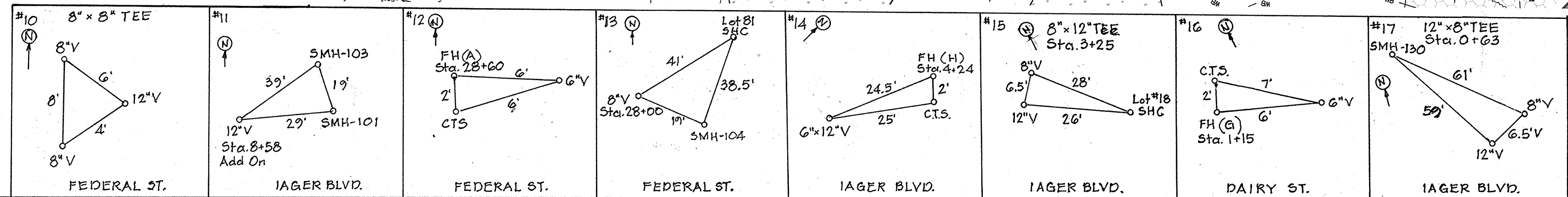
MATCHLINE A-A (SEE SHEET 2)

MATCHLINE A-A (SEE SHEET 2)



- NOTES:
1. ALL SHC'S SHOWN SERVING NUMBERED LOTS ARE 4".
 2. ALL MANHOLES WILL BE STANDARD 4'-0" (6 5/12).
 3. OUTSIDE METERS WILL BE PER HOWARD CO. DETAIL IN 9.32 FOR TWIN CONNECTIONS AND DETAIL IN 9.26 FOR SINGLE CONNECTIONS.
 4. ALL INKS SERVING NUMBERED LOTS ARE 1/2" WITH A 1" METER OUTSIDE SETTING.
 5. FOR MINIMUM CELLAR ELEVATIONS, SEE SHEET 6.
 6. FOR AS-BUILT INFORMATION, SEE SHEET 6.
 7. STORM DRAIN BOTH PLAN AND PROFILE WILL BE CONSTRUCTED UNDER F 14-C25.
 8. P-5 PAVINGS WILL BE USED IN IAGER BOULEVARD AND P-3 PAVINGS WILL BE USED FOR ALL OTHER PUBLIC STREETS.

FOR PROFILE INFORMATION, SEE SHEETS 4 THROUGH 6



PREPARED FOR:
 MAPLE LAWN FARMS I, LLC
 SUITE 300 WOODHOLME CENTER
 1829 REISTERSTOWN ROAD
 BALTIMORE, MD 21208
 ATTN: MARK BENNETT
 410-484-8400

DEPARTMENT OF PUBLIC WORKS
 HOWARD COUNTY, MARYLAND

Steve Cline 5/15/14
 CHIEF, BUREAU OF UTILITIES DATE

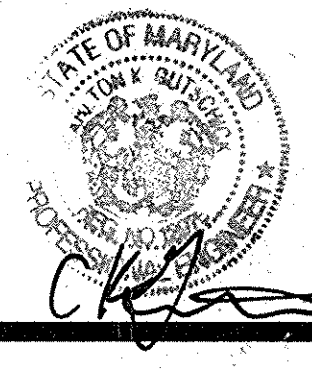
DEPARTMENT OF PLANNING AND ZONING
 HOWARD COUNTY, MARYLAND

Chad Clark 5-15-14
 CHIEF, DEVELOPMENT ENGINEERING DIVISION DATE

GLW GUTSCHICK LITTLE & WEBER, P.A.
 CIVIL ENGINEERS, LAND SURVEYORS, LAND PLANNERS, LANDSCAPE ARCHITECTS
 3909 NATIONAL DRIVE - SUITE 250 - BURTONSVILLE OFFICE PARK
 BURTONSVILLE, MARYLAND 20866
 TEL: 301-421-4024 BAL: 410-880-1820 DC/VA: 301-989-2524 FAX: 301-421-4186

DATE APRIL 2014
 G.L.W. No. 12001

PROFESSIONAL CERTIFICATION
 I HEREBY CERTIFY THAT THESE PLANS WERE PREPARED OR APPROVED BY ME, AND THAT I AM A DULY LICENSED PROFESSIONAL ENGINEER UNDER THE LAWS OF THE STATE OF MARYLAND, LICENSE NO. 12975
 EXP. DATE: MAY 26, 2018
 4/24/14

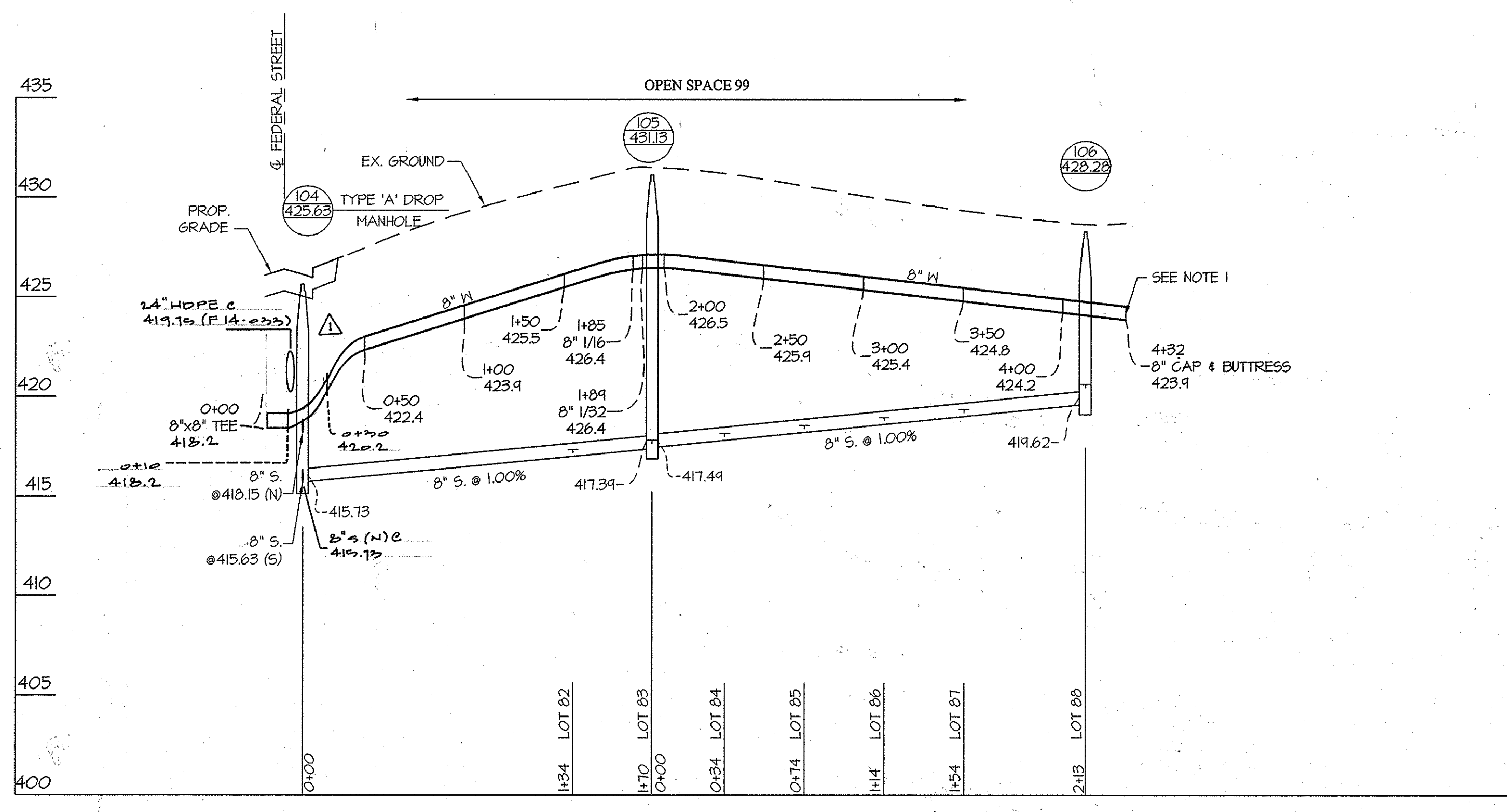
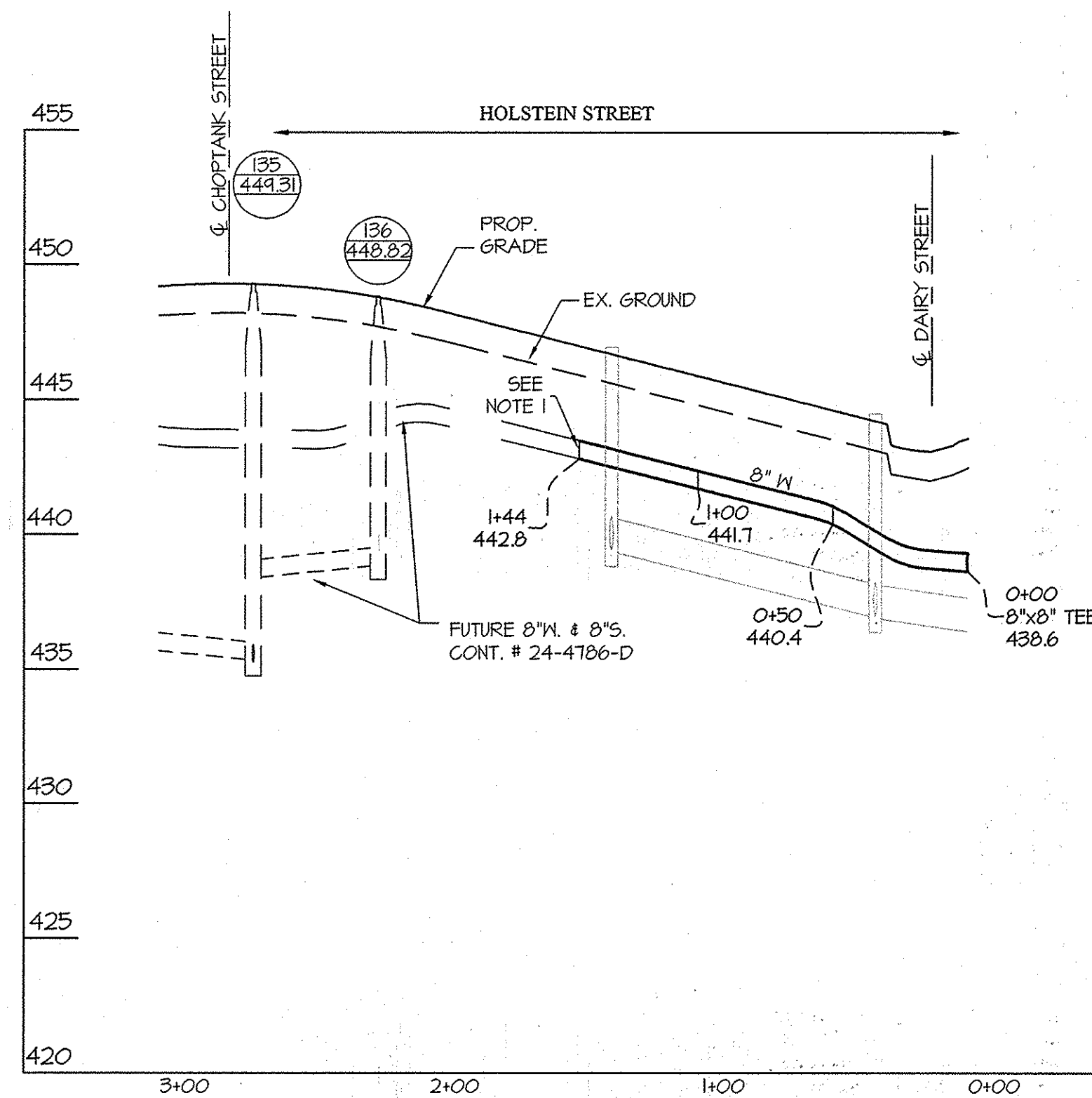


BY	NO	REVISION	DATE
DEW	1	add who's to open space lots 99 & 100, revise who's & shc locations for lots 10-12, shorten 2' w in plan to match profile.	11-18-2014

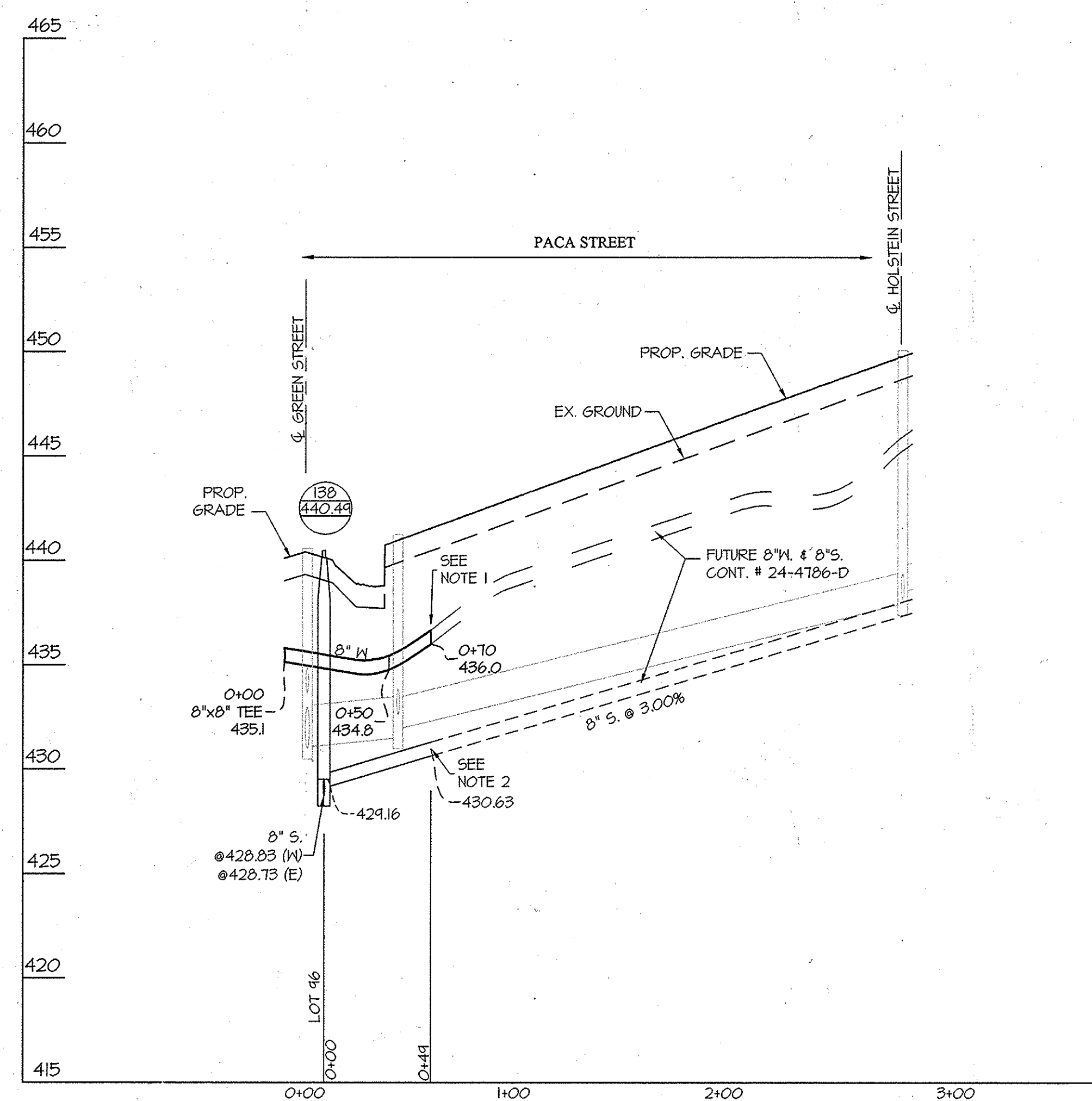
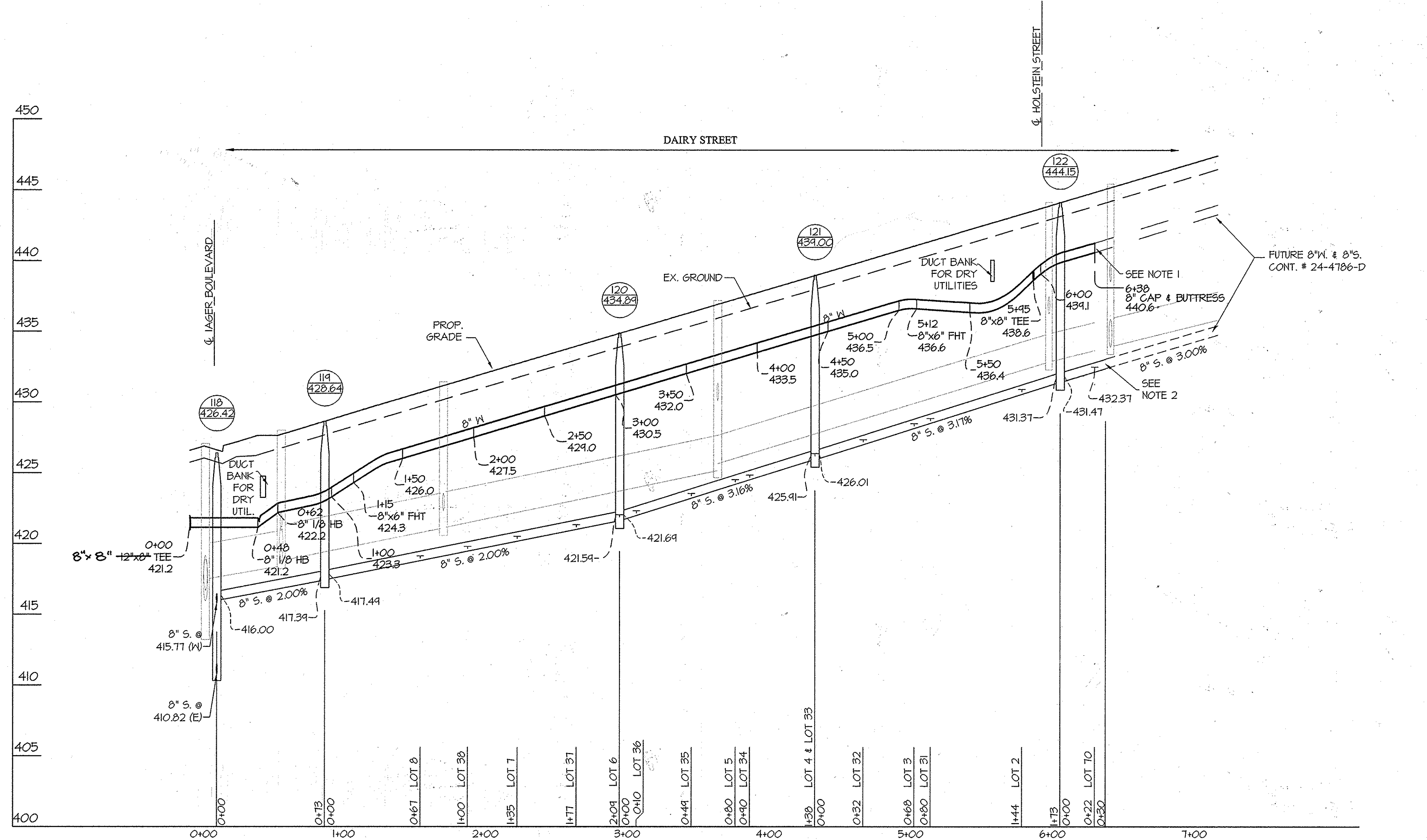
WATER and SEWER PLAN
 600' SCALE MAP NO. 41 BLOCK NO14,15,20&21

MAPLE LAWN FARMS
 CONTRACT NO. 24-4785-D (PHASE 1)
 GARDEN DISTRICT - AREA 1
 LOTS 2 thru 45 and LOTS 78 thru 98
 OPEN SPACE LOTS 99, 100 and LOTS 105 thru 110
 COMMON OPEN AREA LOTS 111 and 112
 AND NON-BUILDABLE BULK PARCELS 'X' and 'Z'
 HOWARD COUNTY, MARYLAND
 ELECTION DISTRICT No. 5

SCALE 1" = 50'
 SHEET 3 OF 6



NOTES:
 1. CONTRACTOR IS TO INSTALL 8" CAP AND BUTTRESS.
 2. CONTRACTOR IS TO INSTALL 8" STOPPER.
 3. WHERE THE 8" W PASSES UNDER A STORM DRAIN, THE CONTRACTOR IS TO CENTER A COMPLETE 20' LENGTH OF WATER MAIN AT THE CROSSING.



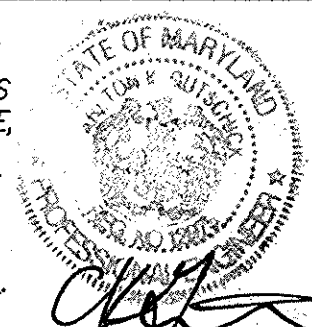
PREPARED FOR:
 MAPLE LAWN FARMS I, LLC
 SUITE 300 WOODHOLME CENTER
 1829 REISTERSTOWN ROAD
 BALTIMORE, MD 21208
 ATTN: MARK BENNETT
 410-484-8400

DEPARTMENT OF PUBLIC WORKS
 HOWARD COUNTY, MARYLAND
 Chief, Bureau of Utilities

DEPARTMENT OF PLANNING AND ZONING
 HOWARD COUNTY, MARYLAND
 Chief, Development Engineering Division
 5.15.14

GLWGUTSCHICK LITTLE & WEBER, P.A.
 CIVIL ENGINEERS, LAND SURVEYORS, LAND PLANNERS, LANDSCAPE ARCHITECTS
 3909 NATIONAL DRIVE - SUITE 250 - BURTONSVILLE OFFICE PARK
 BURTONSVILLE, MARYLAND 20886
 TEL: 301-421-4024 BAL: 410-880-1820 DC/VA: 301-989-2524 FAX: 301-421-4186

DATE: APRIL, 2014
 PROFESSIONAL CERTIFICATION: I HEREBY CERTIFY THAT THESE PLANS WERE PREPARED OR APPROVED BY ME, AND THAT I AM A DULY LICENSED PROFESSIONAL ENGINEER UNDER THE LAWS OF THE STATE OF MARYLAND.
 LICENSE NO. 12975
 EXP. DATE: MAY 26, 2016
 G.L.W. No. 12001



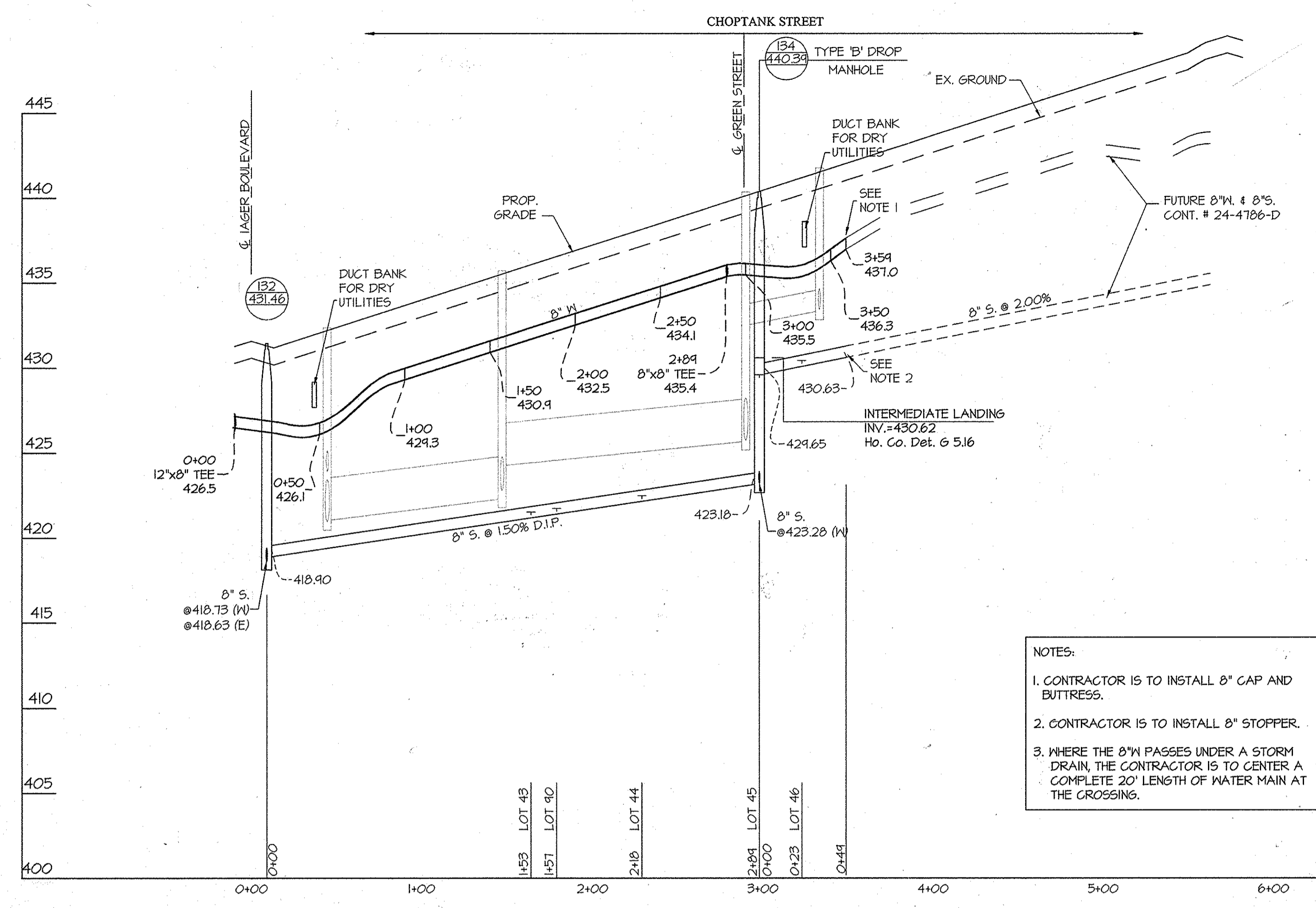
BY	NO	REVISION	DATE
		revise 8" S to 8" W to resolve 40' conflict	11-18-2014

WATER and SEWER PROFILES
 600' SCALE MAP NO. 41 BLOCK NO.14,15,20&21

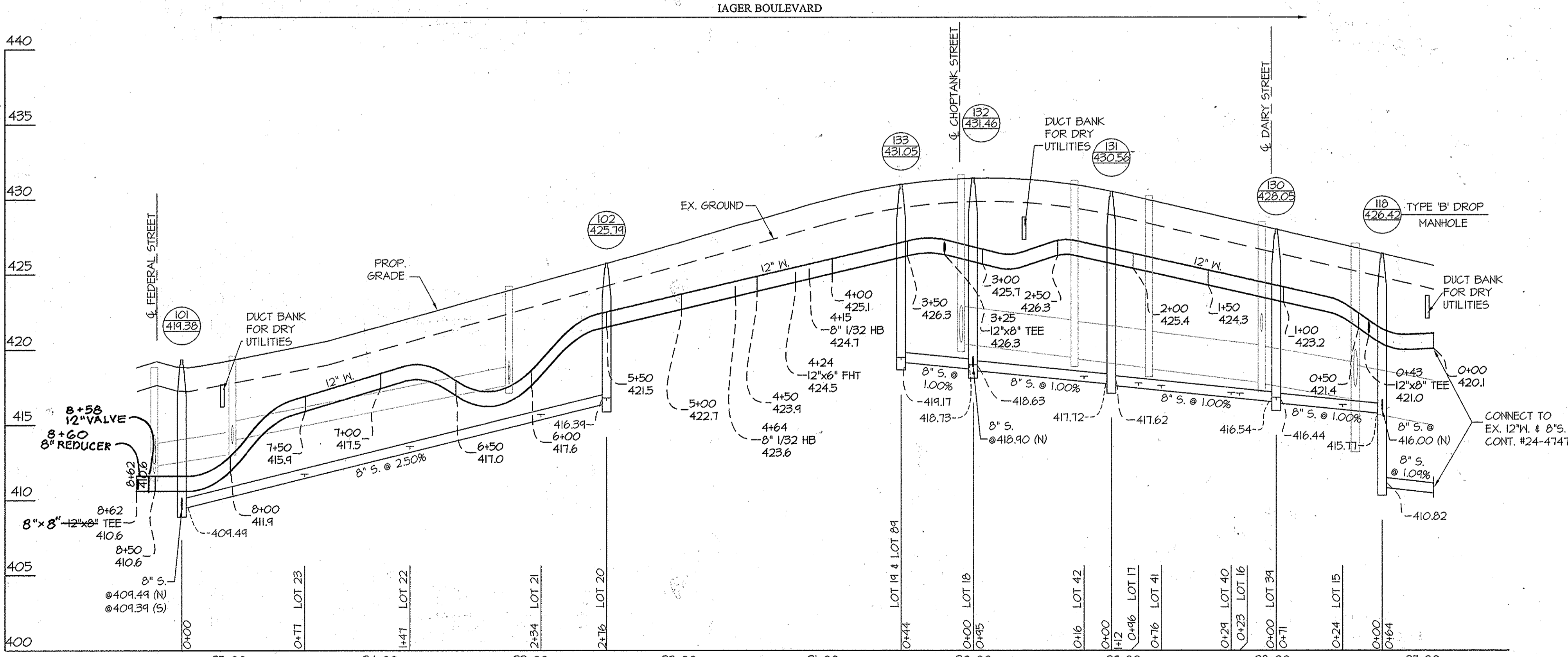
MAPLE LAWN FARMS
 CONTRACT No. 24-4785-D
 GARDEN DISTRICT - AREA I (PHASE I)
 LOTS 2-46, 77-98, OPEN SPACE LOTS 99-100, 106-108,
 COMMON OPEN AREA LOTS 111-112
 AND NON-BUILDABLE BULK PARCELS 'X' thru 'Z'
 HOWARD COUNTY, MARYLAND
 ELECTION DISTRICT No. 5

SCALE
 1"=50' (H)
 1"=5' (V)
 SHEET
 5 OF 6

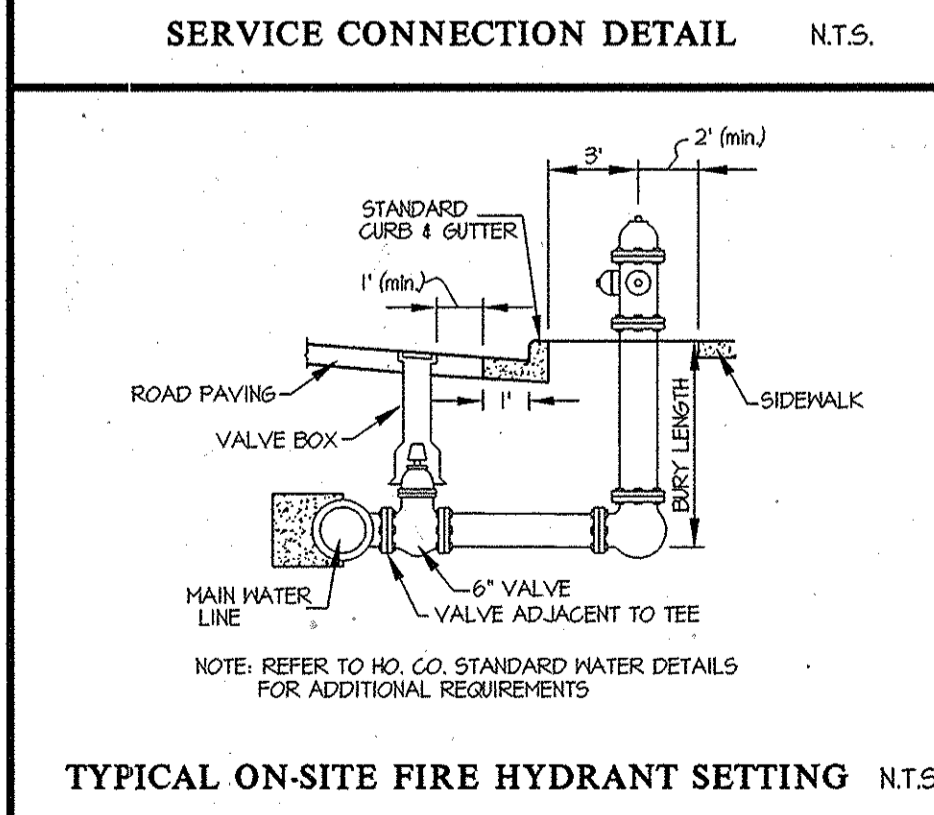
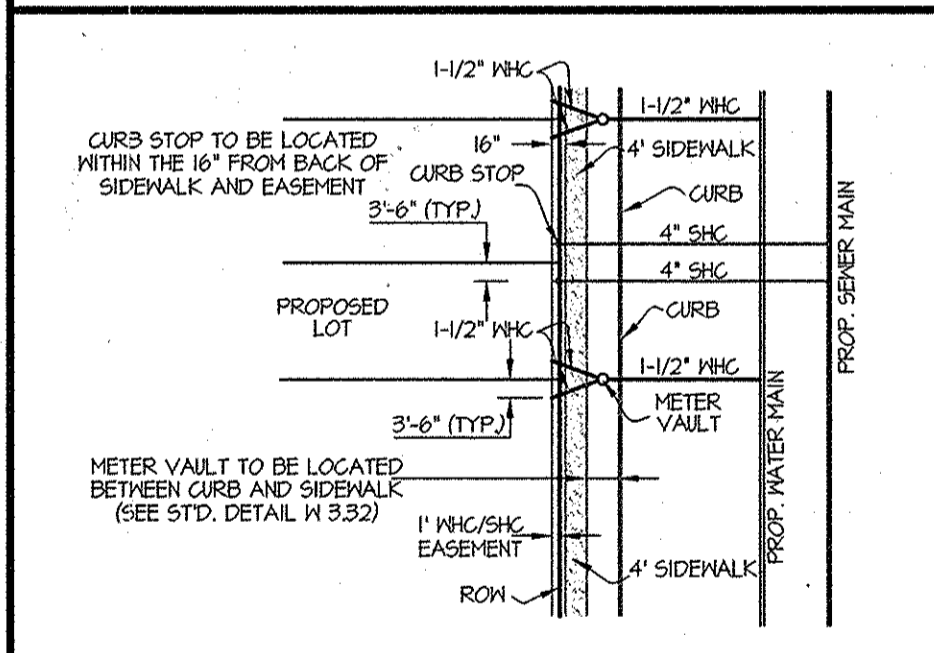
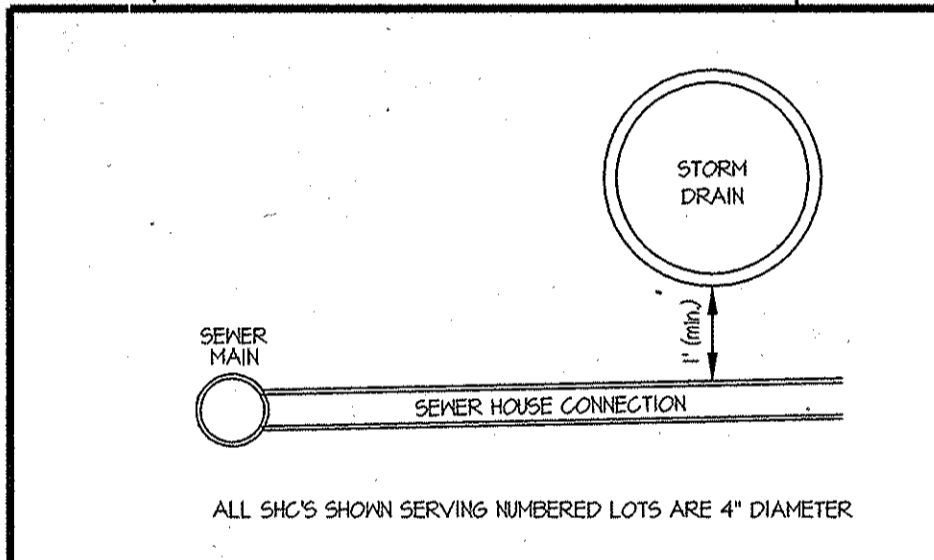
L:\CAD\DRAWINGS\2007\PLANS BY GUY\WV\PLANS\PHASE 1\24-4785-FG\2007PH11.FWS_PROFILES.dwg



NOTES:
 1. CONTRACTOR IS TO INSTALL 8" CAP AND BUTTRESS.
 2. CONTRACTOR IS TO INSTALL 8" STOPPER.
 3. WHERE THE 8" W MAIN PASSES UNDER A STORM DRAIN, THE CONTRACTOR IS TO CENTER A COMPLETE 20' LENGTH OF WATER MAIN AT THE CROSSING.



AS-BUILT INFORMATION													
LOT #	ADDRESS	WATER HOUSE CONNECTION AS BUILT		SEWER HOUSE CONNECTION AS BUILT		LOT #	ADDRESS	WATER HOUSE CONNECTION AS BUILT		SEWER HOUSE CONNECTION AS BUILT		LOT #	ADDRESS
		LOCATION DIM. 1	LOCATION DIM. 2	LOCATION DIM. 1	LOCATION DIM. 2			LOCATION DIM. 1	LOCATION DIM. 2	LOCATION DIM. 1	LOCATION DIM. 2		
2	DAIRY STREET	36' to Lot 2 SHC	46.4' to Lot 705HC	36' to Lot 2 WHC	38.6' to Lot 8 WHC	40	IAGER BOULEVARD	38' to Lot 40 SHC	47' to Lot 41 SHC	38' to Lot 40 WHC	47' to Lot 41 WHC	40	IAGER BOULEVARD
3	DAIRY STREET	38.6' to Lot 25HC	40.6' to Lot 3 SHC	40.6' to Lot 3 WHC	33.4' to Lot 4 WHC	41	IAGER BOULEVARD	10' to Lot 42 SHC	47' to Lot 41 SHC	47' to Lot 40 SHC	11' to Lot 40 SHC	41	IAGER BOULEVARD
4	DAIRY STREET	33.4' to Lot 5 SHC	40' to Lot 4 SHC	40' to Lot 4 WHC	37.8' to Lot 5 WHC	42	IAGER BOULEVARD	34' to Lot 87 WHC	72.5' to Lot 42 SHC	10' to Lot 41 WHC	72.5' to Lot 42 WHC	42	IAGER BOULEVARD
5	DAIRY STREET	37.8' to Lot 4 SHC	22' to Lot 5 SHC	22' to Lot 5 WHC	48' to Lot 6 WHC	43	CHOPTANK STREET	14' to Lot 44 SHC	58' to Lot 43 SHC	58' to Lot 43 WHC	172' to Lot 44 WHC	43	CHOPTANK STREET
6	DAIRY STREET	48' to Lot 5 SHC	37' to Lot 6 SHC	37' to Lot 6 WHC	42' to Lot 7 WHC	44	CHOPTANK STREET	44' to Lot 44 SHC	44' to Lot 44 SHC	44' to Lot 44 WHC	67.5' to Lot 44 WHC	44	CHOPTANK STREET
7	DAIRY STREET	42' to Lot 6 SHC	32.5' to Lot 7 SHC	32.5' to Lot 7 WHC	61.5' to Lot 8 WHC	45	CHOPTANK STREET	18' to Lot 45 SHC	14.5' to Lot 46 SHC	18' to Lot 45 WHC	27' to Lot 44 WHC	45	CHOPTANK STREET
8	DAIRY STREET	61.5' to Lot 7 SHC	12' to Lot 8 SHC	12' to Lot 8 WHC	61.5' to Lot 9 WHC	FUT. 46	CHOPTANK STREET	14' to Lot 47 SHC	14.5' to Lot 46 SHC	14.5' to Lot 45 WHC	32' to Lot 46 WHC	FUT. 46	CHOPTANK STREET
9	IAGER BOULEVARD	61.5' to Lot 8 SHC	82.6' to Lot 9 SHC	82.6' to Lot 9 WHC	84.5' to Lot 10 WHC	FUT. 71	PACA STREET	18' to Lot 76 SHC	39.5' to Lot 76 WHC	43.5' to Lot 79 WHC	55' to Lot 98 SHC	FUT. 71	PACA STREET
(10)	IAGER BOULEVARD	84.5' to Lot 9 SHC	12' to Lot 10 SHC	12' to Lot 10 WHC	50' to Lot 11 WHC	78	FEDERAL STREET	36' to Lot 27 WHC	44.6' to Lot 78 SHC	44.6' to Lot 78 WHC	184' to Lot 77 WHC	78	FEDERAL STREET
(11)	IAGER BOULEVARD	45' to Lot 12 WAC	71.5' to Lot 13 SHC	71.5' to Lot 13 WHC	11.5' to Lot 10 WHC	74	FEDERAL STREET	92' to Lot 78 SHC	43.5' to Lot 79 SHC	43.5' to Lot 79 WHC	48' to Lot 78 SHC	74	FEDERAL STREET
(12)	IAGER BOULEVARD	45' to Lot 11 WHC	52' to Lot 12 SHC	108' to Lot 13 WHC	79.5' to Lot 12 WHC	80	FEDERAL STREET	49.6' to Lot 26 WHC	29.5' to Lot 80 SHC	29.5' to Lot 80 WHC	44' to Lot 25 WHC	80	FEDERAL STREET
(13)	IAGER BOULEVARD	108' to Lot 12 SHC	16.5' to Lot 13 SHC	83' to Lot 14 WHC	90' to Lot 14 WHC	81	FEDERAL STREET	31' to Lot 81 SHC	75.5' to Lot 82 SHC	75.5' to Lot 81 WHC	74' to Lot 80 SHC	81	FEDERAL STREET
14	IAGER BOULEVARD	21' to Lot 14 SHC	44' to SMH-118	21' to Lot 14 WHC	83' to Lot 13 SHC	82	IAGER BOULEVARD	40' to Lot 82 SHC	32' to SMH-105	8' to Lot 82 WHC	95.5' to Lot 81 WHC	82	IAGER BOULEVARD
15	IAGER BOULEVARD	21' to Lot 15 SHC	41' to Lot 16 SHC	21' to Lot 15 WHC	36' to Green Arch W/C	83	IAGER BOULEVARD	27.5' to Lot 83 SHC	40' to Lot 82 WHC	40' to Lot 82 WHC	28' to Lot 84 WHC	83	IAGER BOULEVARD
16	IAGER BOULEVARD	23' to Lot 16 SHC	61.5' to Lot 17 SHC	23' to Lot 16 WHC	40' to Lot 15 WHC	84	IAGER BOULEVARD	32' to Lot 84 SHC	15' to Lot 85 SHC	32' to Lot 84 WHC	11' to Lot 83 WHC	84	IAGER BOULEVARD
17	IAGER BOULEVARD	89.5' to Lot 16 SHC	16' to Lot 17 SHC	16' to Lot 17 WHC	62' to Lot 16 WHC	85	IAGER BOULEVARD	32' to Lot 85 SHC	14' to Lot 86 SHC	32' to Lot 85 WHC	13' to Lot 84 WHC	85	IAGER BOULEVARD
18	IAGER BOULEVARD	99' to Lot 17 SHC	32.5' to Lot 18 SHC	32.5' to Lot 18 WHC	85' to Lot 17 WHC	86	IAGER BOULEVARD	31' to Lot 86 SHC	13' to Lot 87 SHC	31' to Lot 86 WHC	12.5' to Lot 85 WHC	86	IAGER BOULEVARD
19	IAGER BOULEVARD	73.5' to Lot 18 SHC	31' to Lot 19 SHC	31' to Lot 19 WHC	19.5' to Lot 18 WHC	87	IAGER BOULEVARD	45.5' to Lot 87 SHC	45.5' to Lot 88 SHC	45.5' to Lot 87 WHC	12' to Lot 86 WHC	87	IAGER BOULEVARD
20	IAGER BOULEVARD	136' to Lot 19 SHC	35.6' to Lot 20 SHC	35.6' to Lot 20 WHC	49' to Lot 21 WHC	88	IAGER BOULEVARD	15' to Lot 88 SHC	9' to CTS	15' to Lot 88 WHC	45.5' to Lot 87 WHC	88	IAGER BOULEVARD
21	IAGER BOULEVARD	50' to Lot 20 SHC	13.5' to Lot 21 SHC	13.5' to Lot 21 WHC	69.5' to Lot 22 WHC	89	IAGER BOULEVARD	34' to Lot 42 WHC	11' to Lot 90 SHC	59' to Lot 89 WHC	11' to Lot 88 SHC	89	IAGER BOULEVARD
22	IAGER BOULEVARD	69.5' to Lot 21 SHC	25' to Lot 22 SHC	25' to Lot 22 WHC	50.5' to Lot 23 WHC	90	GREEN STREET	28' to Lot 91 SHC	104' to Lot 90 SHC	53' to Lot 43 WHC	111' to Lot 89 WHC	90	GREEN STREET
23	IAGER BOULEVARD	61' to Lot 22 SHC	25.5' to Lot 23 SHC	25.5' to Lot 23 WHC	37.5' to Lot 24 WHC	91	GREEN STREET	40' to Lot 92 SHC	13' to Lot 92 SHC	28' to Lot 92 WHC	41' to Lot 91 WHC	91	GREEN STREET
24	IAGER BOULEVARD	35' to Lot 23 SHC	12.5' to Lot 24 SHC	12.5' to Lot 24 WHC	130' to SMH-101	92	GREEN STREET	58' to Lot 92 SHC	13' to CTS	58' to Lot 92 WHC	54' to Lot 91 WHC	92	GREEN STREET
25	FEDERAL STREET	58' to Lot 25 SHC	86' to Lot 26 SHC	58' to Lot 25 WHC	55' to Lot 26 SHC	43	GREEN STREET	30' to Lot 93 SHC	12' to Lot 94 SHC	30' to Lot 93 WHC	12' to Lot 94 WHC	43	GREEN STREET
26	FEDERAL STREET	15' to Lot 26 SHC	49.5' to Lot 27 WHC	15' to Lot 26 WHC	39' to Lot 27 WHC	44	GREEN STREET	31' to Lot 94 SHC	14' to Lot 95 SHC	31' to Lot 94 WHC	12' to Lot 93 WHC	44	GREEN STREET
27	FEDERAL STREET	43' to Lot 27 SHC	36' to Lot 28 WHC	43' to Lot 27 WHC	57' to Lot 28 WHC	45	GREEN STREET	44' to Lot 95 SHC	14' to Lot 96 SHC	44' to Lot 95 WHC	14' to Lot 94 WHC	45	GREEN STREET
28	FEDERAL STREET	43' to Lot 28 SHC	36' to Lot 29 WHC	43' to Lot 28 WHC	60.5' to Lot 16 SHC	46	GREEN STREET	23' to Lot 96 SHC	22' to Lot 97 SHC	23' to Lot 96 WHC	14' to Lot 95 WHC	46	GREEN STREET
29	FEDERAL STREET	48' to Lot 29 SHC	82' to Lot 30 SHC	48' to Lot 29 WHC	55' to Lot 16 SHC	47	GREEN STREET	31' to Lot 97 SHC	13.5' to Lot 98 SHC	31' to Lot 97 WHC	22' to Lot 96 WHC	47	GREEN STREET
30	FEDERAL STREET	40' to Lot 30 SHC	80' to Lot 31 SHC	40' to Lot 30 WHC	57' to Lot 16 SHC	48	GREEN STREET	31' to Lot 98 SHC	58' to Lot 77 SHC	31' to Lot 98 WHC	10' to Lot 97 WHC	48	GREEN STREET
31	DAIRY STREET	80' to Lot 31 SHC	68' to Lot 70 SHC	80' to Lot 31 WHC	22' to Lot 32 WHC	FUT. 115	FEDERAL STREET	17.5' to Lot 20 SHC	45' to Lot 20 SHC	N/A	N/A	FUT. 115	FEDERAL STREET
32	DAIRY STREET	21.5' to Lot 31 SHC	31' to Lot 32 SHC	21.5' to Lot 31 WHC	9' to Lot 23 WHC	FUT. 163	FEDERAL STREET	54' to Lot 163 SHC	93' to CTS (PI 8)	54' to Lot 163 WHC	54.5' to Lot 164 WHC	FUT. 163	FEDERAL STREET
33	DAIRY STREET	13' to Lot 32 SHC	25.5' to Lot 33 SHC	13' to Lot 32 WHC	18' to Lot 34 WHC	FUT. 164	FEDERAL STREET	36' to Lot 28 WHC	32' to Lot 165 SHC	54.5' to Lot 163 WHC	48' to Lot 28 WHC	FUT. 164	FEDERAL STREET
34	DAIRY STREET	33.5' to Lot 33 SHC	29.6' to Lot 34 SHC	29.6' to Lot 34 WHC	10' to Lot 35 WHC	FUT. 165	FEDERAL STREET	50' to Lot 165 SHC	21' to Lot 165 SHC	82' to Lot 165 WHC	21' to Lot 165 WHC	FUT. 165	FEDERAL STREET
35	DAIRY STREET	12.9' to Lot 34 SHC	31' to Lot 35 SHC	12.9' to Lot 34 WHC	9' to Lot 36 WHC	FUT. 166	FEDERAL STREET	88.5' to Lot 167 SHC	18' to Lot 166 SHC	80' to Lot 165 WHC	25' to Lot 166 WHC	FUT. 166	FEDERAL STREET
36	DAIRY STREET	12' to Lot 35 SHC	31' to Lot 36 SHC	12' to Lot 35 WHC	11' to Lot 37 WHC	FUT. 167	FEDERAL STREET	45' to Lot 168 SHC	35' to Lot 167 SHC	35.5' to Lot 167 WHC	48' to Lot 29 WHC	FUT. 167	FEDERAL STREET
37	DAIRY STREET	14.2' to Lot 36 SHC	33' to Lot 37 SHC	14.2' to Lot 36 WHC	46.5' to Lot 37 WHC	FUT. 168	DAIRY STREET	68' to Lot 169 SHC	45' to Lot 168 SHC	45' to Lot 167 WHC	86' to Lot 168 WHC	FUT. 168	DAIRY STREET
38	DAIRY STREET	40' to Lot 38 SHC	40' to Lot 37 SHC	40' to Lot 38 WHC	62.5' to Lot 38 WHC	FUT. 169	DAIRY STREET	21.5' to Lot 170 SHC	35' to Lot 169 SHC	62.5' to Lot 168 WHC	35' to Lot 169 WHC	FUT. 169	DAIRY STREET
39	IAGER BOULEVARD	32' to FH (G)	32' to FH (G)	32' to FH (G)	51' to Lot 15 WHC	FUT. 170	DAIRY STREET	12' to Lot 170 SHC	43' to Lot 170 SHC	43' to Lot 170 WHC	43' to Lot 170 WHC	FUT. 170	DAIRY STREET
40	IAGER BOULEVARD	31' to Lot 87 WHC	9' to Lot 88 WHC	31' to Lot 87 WHC	Green Area behind Lot 14	FUT. 171	IAGER BLVD.	36' to Lot 15 SHC	35.5' to SMH 118	N/A	N/A	FUT. 171	IAGER BLVD.



MINIMUM CELLAR ELEVATIONS (M.C.E.)					
LOT	INV. @ MAIN/MH	INV. @ R/W	M.C.E.	LOT	INV. @ MAIN/MH
2	430.74	431.06	436.04	41	417.47
3	428.34	428.66	433.64	42	418.05
4	426.18	426.46	431.48	43	421.37
5	424.34	424.71	429.69	44	422.34
6	421.86	422.14	427.16	45	424.00
7	420.36	420.66	425.66	78	431.26
8	419.00	419.32	423.94	79	424.33
9	410.36	410.78	415.76	80	421.44
(10)	404.33	404.75	414.65	81	419.25
(11)	408.78	409.20	414.10	82	417.24
12	401.32	401.52	404.60	83	417.66
13	409.65	410.43	415.25	84	418.00
14	410.52	411.26	416.12	85	418.40
15	416.18	416.96	421.78	86	418.80
16	416.94	417.72	422.34	87	419.20
17	417.67	418.45	423.21	88	420.00
18	418.90	419.64	424.50	89	419.88
19	419.44	420.18	425.04	90	421.43
20	416.66	417.44	422.06	41	424.95
21	415.51	416.24	421.11	42	426.21
22	415.34	416.12	421.44	43	421.14
23	411.54	412.31	417.24	44	421.75
24	404.60	405.02	410.20	45	428.31
25	419.10	420.38	426.90	46	424.33
26	425.00	425.64	432.20	47	424.86
27	431.63	432.31	438.93	48	430.44
28	431.52	432.20	438.02	49	431.15
29	441.27	441.91	448.27	FUT. 46	430.28
30	442.73	443.37	449.73	FUT. 71	430.77
31	429.31	429.94	436.61	FUT. 115	441.63
32	427.14	427.77	434.64	FUT. 163	436.30
33	426.18	426.82	433.98	FUT. 164	438.36
34	424.10	424.74	431.50	FUT. 165	440.53
35	423.41	424.04	429.27	FUT. 166	441.27
36	422.18	422.86	429.98	FUT. 167	441.91
37	421.20	421.88	428.20	FUT. 168	442.73
38	419.66	420.34	424.86	FUT. 169	448.87
39	416.71	417.44	421.61	FUT. 170	444.35
40	417.00	417.44	421.90	FUT. 171	449.05

NOTE: () DENOTE LOTS WHOSE CONNECTIONS WERE PROVIDED UNDER CONTRACT # 24-4747-D. INFORMATION WAS TAKEN FROM THOSE APPROVED PLANS.

PREPARED FOR:
 MAPLE LAWN FARMS I, LLC
 SUITE 300 WOODHOLME CENTER
 1829 REISTERSTOWN ROAD
 BALTIMORE, MD 21208
 ATTN: MARK BENNETT
 410-484-8400

DEPARTMENT OF PUBLIC WORKS HOWARD COUNTY, MARYLAND Chief, Bureau of Utilities Date: 5/14/14	DEPARTMENT OF PLANNING AND ZONING HOWARD COUNTY, MARYLAND Chief, Development Engineering Division Date: 5/15/14	GLWGUTSCHICK LITTLE & WEBER, P.A. CIVIL ENGINEERS, LAND SURVEYORS, LAND PLANNERS, LANDSCAPE ARCHITECTS 3909 NATIONAL DRIVE - SUITE 250 - BURTONSVILLE OFFICE PARK BURTONSVILLE, MARYLAND 20886 TEL: 301-421-4024 FAX: 410-880-1820 DC/VA: 301-399-2524 FAX: 301-421-4188	DATE: APRIL, 2014 G.L.W. No.: 12001 PROFESSIONAL CERTIFICATION: I HEREBY CERTIFY THAT THESE PLANS WERE PREPARED OR APPROVED BY ME, AND THAT I AM A DULY LICENSED PROFESSIONAL ENGINEER UNDER THE LAWS OF THE STATE OF MARYLAND. LICENSE NO. 12975 EXP. DATE: MAY 28, 2018 4/24/14	WATER and SEWER PROFILES 600' SCALE MAP NO. 41 BLOCK NO. 14, 15, 20 & 21 SHEET 6 OF 6
------------------------------------------------------------------------------------------------------	--------------------------------------------------------------------------------------------------------------------------	-------------------------------------------------------------------------------------------------------------------------------------------------------------------------------------------------------------------------------------------------------------------------------------------------	-----------------------------------------------------------------------------------------------------------------------------------------------------------------------------------------------------------------------------------------------------------------------------------------------------	---------------------------------------------------------------------------------------------