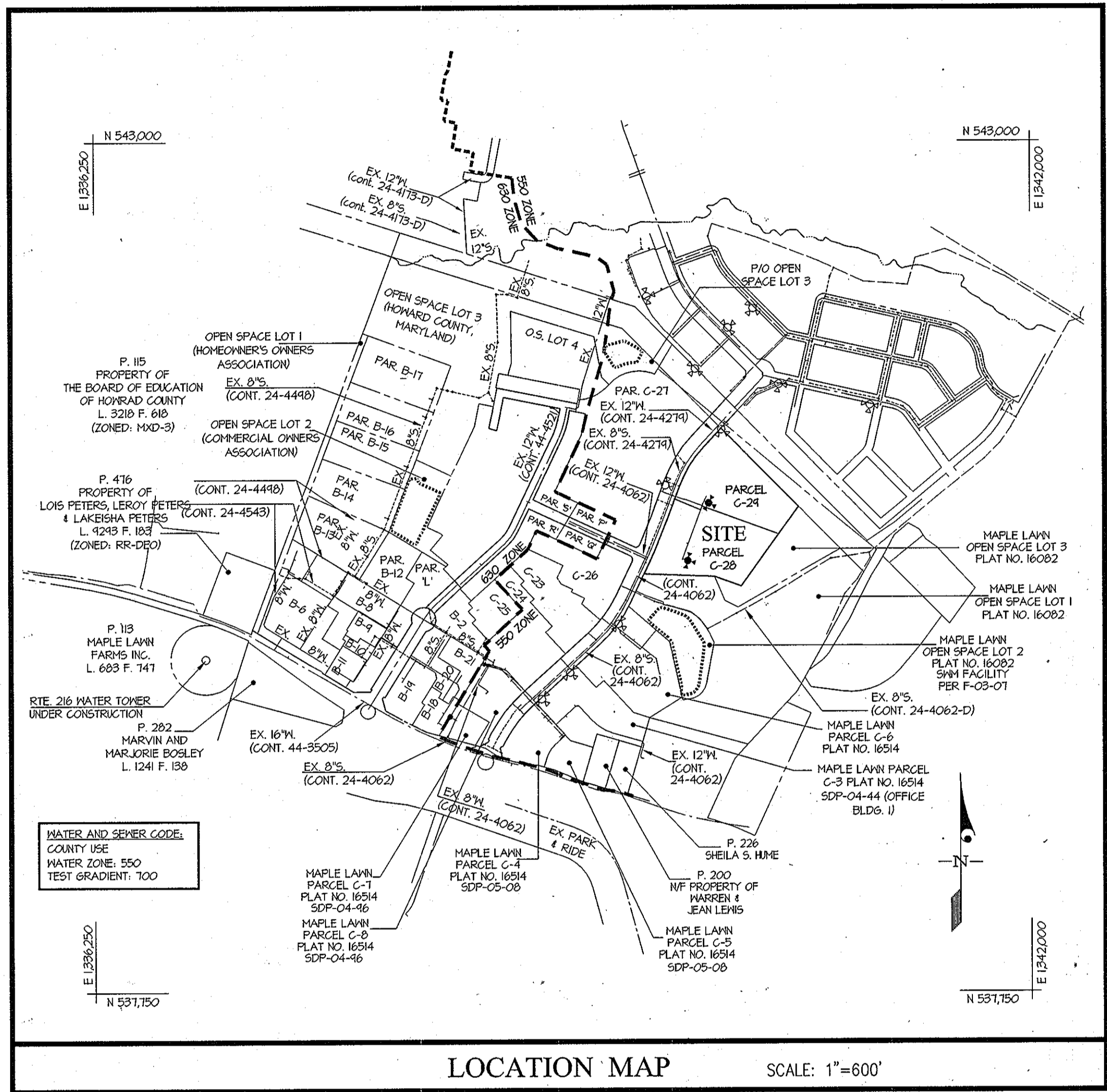
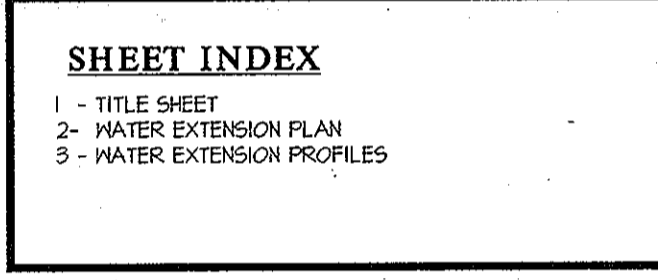
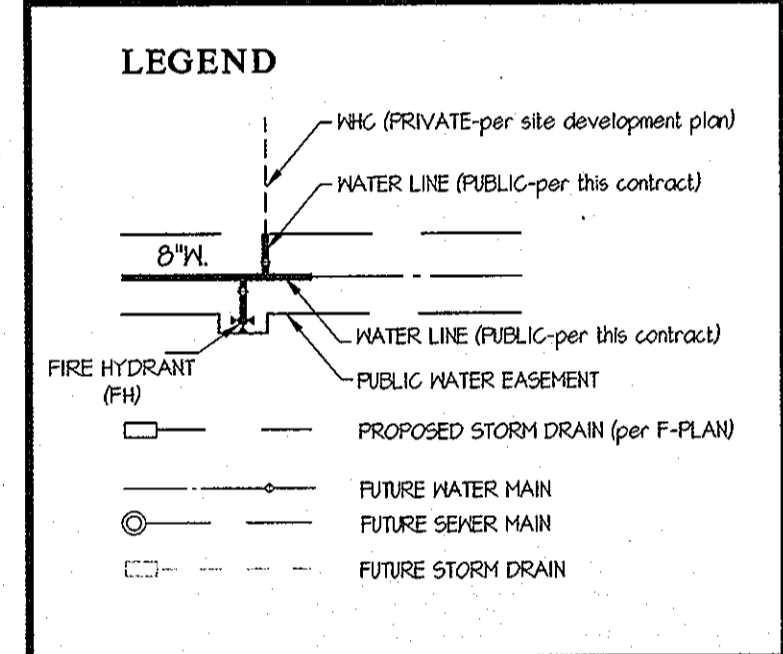


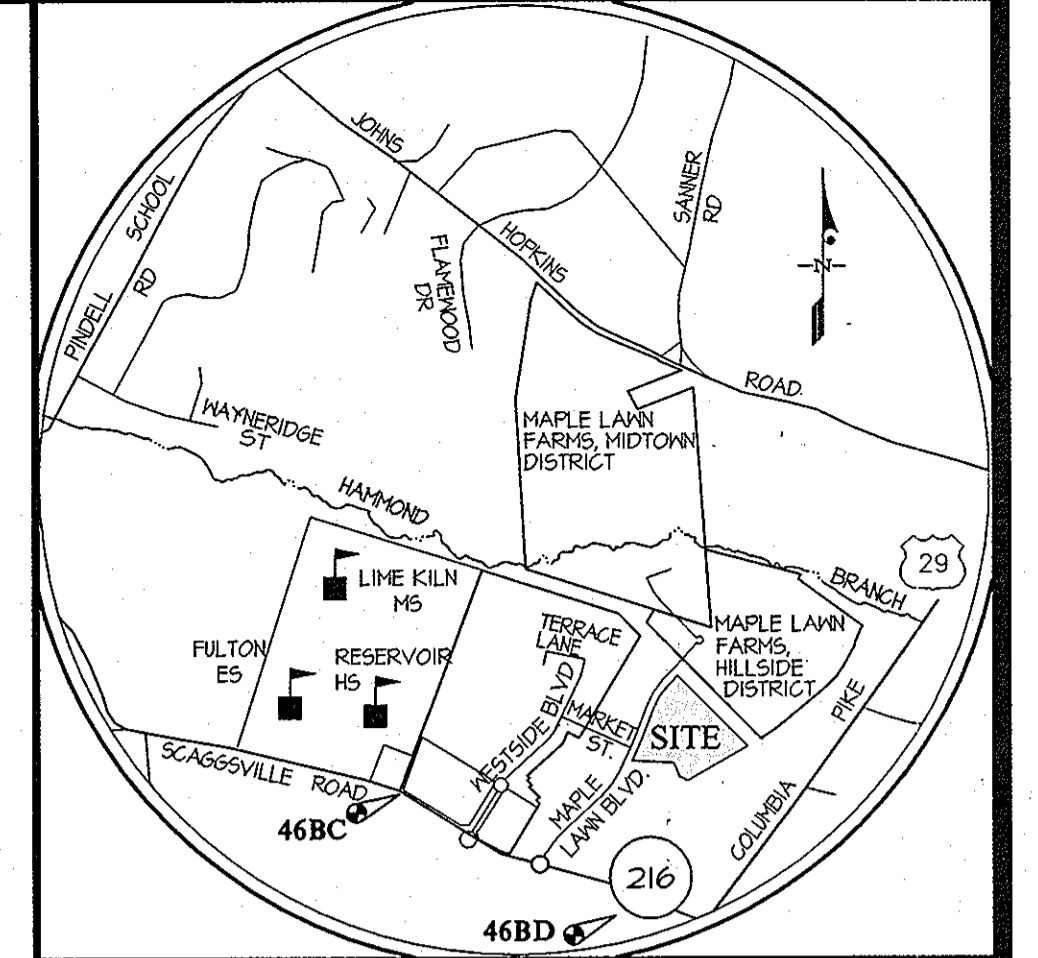
ITEMS	QUANTITIES ESTIMATED	AS-BUILT		
		QUANTITIES	TYPE	MANUFACTURER/SUPPLIER
8" WATER MAIN	602 L.F.	602 L.F.	D.I.P. (CL 54)	ATLANTIC STATES
6" WATER MAIN	32 L.F.	32 L.F.	D.I.P. (CL 54)	ATLANTIC STATES
8" x 6" FHT.	2 EA.	2 EA.	MJT	TYLER/UNION FOUNDRY
8" x 8" T.	1 EA.	2 EA.	MJT	TYLER/UNION FOUNDRY
8" VALVE	3 EA.	3 EA.	GATE	AMERICAN FLOW
8" GAP	2 EA.	2 EA.	MJT	TYLER/UNION FOUNDRY
6" VALVE	2 EA.	2 EA.	GATE	AMERICAN FLOW
FIRE HYDRANT	2 EA.	2 EA.	884B	AMERICAN FLOW

NAME OF UTILITY CONTRACTOR: **COSENTINO CONTRACTING CO.**

SURVEY AND DRAFTING DIV. CHECKBOX: AS-BUILT DATE:



TYPE OF BUILDING	OFFICE BUILDING
NUMBER OF UNITS	1
NUMBER OF S.H.C.'s	0
NUMBER OF W.H.C.'s	1
AREA OF COMMERCIAL LOT/PARCEL	6.0 ACRES
SEWER SHED	LITTLE PATUXENT
PUMPING STATION	LITTLE PATUXENT WWTP



BENCHMARKS	
46BC ELEV. = 472.16 N = 594925.13 E = 1391205.11 STANDARD DISC ON CONCRETE MONUMENT	46BD ELEV. = 431.17 N = 590656.76 E = 1394461.55 STANDARD DISC ON CONCRETE MONUMENT

- GENERAL NOTES**
- PART I**
- APPROXIMATE LOCATIONS OF EXISTING MAINS ARE SHOWN. THE CONTRACTOR SHALL TAKE ALL NECESSARY PRECAUTIONS TO PROTECT EXISTING MAINS AND SERVICES AND MAINTAIN UNINTERRUPTED SERVICE. ANY DAMAGE INCURRED SHALL BE REPAIRED IMMEDIATELY TO THE SATISFACTION OF THE ENGINEER AT THE CONTRACTOR'S EXPENSE.
 - TOPOGRAPHIC FIELD SURVEYS WERE PERFORMED ON AUGUST 4, 2011 BY LEO H. RADEK.
 - THE COORDINATES SHOWN ON THE DRAWINGS ARE BASED ON MARYLAND STATE REFERENCE SYSTEM NAD '83/91' AS PROJECTED BY HOWARD COUNTY GEODETIC CONTROL STATIONS NO. 46BC AND NO. 46BD.
 - ALL VERTICAL CONTROLS ARE BASED ON NAVD83. VERTICAL CONTROLS PROVIDED ON THE DRAWINGS ARE STANDARD DISCS ON CONCRETE MONUMENTS.
 - ALL PIPE ELEVATIONS SHOWN ARE INVERT ELEVATIONS UNLESS OTHERWISE NOTED ON THE PLANS.
 - CLEAR ALL UTILITIES BY A MINIMUM OF 12 INCHES. CLEAR ALL POLES BY 5'-0" MINIMUM OR TUNNEL AS REQUIRED UNLESS OTHERWISE NOTED. THE OWNER HAS CONTACTED THE UTILITY COMPANIES AND HAS MADE ARRANGEMENTS FOR BRACING OF POLES AS SHOWN ON THE DRAWINGS. IN THE EVENT THE CONTRACTOR'S WORK REQUIRES THE BRACING OF ADDITIONAL POLES, ANY COST INCURRED BY THE OWNER FOR THE BRACING OF ADDITIONAL POLES OR DAMAGES SHALL BE DEDUCTED FROM MONIES OWED BY THE CONTRACTOR. THE CONTRACTOR SHALL COORDINATE WITH THE UTILITY COMPANIES TO SCHEDULE THE BRACING OF THE POLES.
 - FOR DETAILS NOT SHOWN ON THE DRAWING, AND FOR MATERIALS AND CONSTRUCTION METHODS, USE HOWARD COUNTY DESIGN MANUAL, VOLUME IV, STANDARD SPECIFICATIONS AND DETAILS FOR CONSTRUCTION (LATEST EDITION). THE CONTRACTOR SHALL HAVE A COPY OF VOLUME IV ON THE JOB.
 - WHERE TEST PITS HAVE BEEN MADE ON EXISTING UTILITIES, THEY ARE NOTED BY THE SYMBOL AT THE LOCATIONS OF THE TEST PITS. A NOTE OR NOTES CONTAINING THE RESULTS OF THE TEST PIT OR PITS IS INCLUDED ON THE DRAWINGS. EXISTING UTILITIES IN THE VICINITY OF THE PROPOSED WORK FOR WHICH TEST PITS HAVE NOT BEEN DUG SHALL BE LOCATED BY THE CONTRACTOR TWO WEEKS IN ADVANCE OF CONSTRUCTION OPERATIONS AT HIS OWN EXPENSE.
 - THE CONTRACTOR SHALL NOTIFY THE FOLLOWING UTILITY COMPANIES OR AGENCIES AT LEAST FIVE WORKING DAYS BEFORE STARTING WORK SHOWN ON THESE PLANS:

AT&T	1-800-252-1133
BSE (CONSTRUCTION SERVICES)	410-250-4620
BSE (EMERGENCY)	410-685-1400
BUREAU OF UTILITIES	410-315-4900
COLONIAL PIPELINE COMPANY	410-785-1940
MISS UTILITY	1-800-251-7111
STATE HIGHWAY ADMINISTRATION	410-531-5533
VERIZON	1-800-745-0233/410-224-4210
 - TREES AND SHRUBS ARE TO BE PROTECTED FROM DAMAGE TO THE MAXIMUM EXTENT. TREES AND SHRUBS LOCATED WITHIN THE CONSTRUCTION STRIP ARE NOT TO BE REMOVED OR DAMAGED BY THE CONTRACTOR.
 - THE CONTRACTOR SHALL REMOVE TREES, STUMPS, AND ROOTS ALONG THE LINE OF EXCAVATION. PAYMENT FOR SUCH REMOVAL SHALL BE INCLUDED IN THE UNIT PRICE BID FOR CONSTRUCTION OF THE MAIN.
 - THE CONTRACTOR SHALL NOTIFY THE BUREAU OF HIGHWAYS, HOWARD COUNTY, AT (410)818-7450 AT LEAST FIVE WORKING DAYS BEFORE OPEN CUTTING OR BORING/JACKING OF ANY COUNTY ROAD FOR LAYING WATER/SEWER MAINS OR HOUSE CONNECTIONS. THE APPROVAL OF THESE DRAWINGS WILL CONSTITUTE COMPLIANCE WITH DPM REQUIREMENTS PER SECTION 10.14(A) OF THE HOWARD COUNTY CODE.
- PART II - WATER**
- ALL WATER MAINS TO BE D.I.P. CLASS 54 UNLESS OTHERWISE NOTED.
 - TOPS OF ALL WATER MAINS TO HAVE A MINIMUM OF 3'-6" OF COVER UNLESS OTHERWISE NOTED.
 - VALVES ADJACENT TO TEES SHALL BE STRAPPED TO TEES.
 - ALL FITTINGS SHALL BE BUTTRESSED OR ANCHORED WITH CONCRETE IN ACCORDANCE WITH THE STANDARD DETAILS UNLESS OTHERWISE PROVIDED FOR ON THE DRAWINGS.
 - FIRE HYDRANTS SHALL BE SET TO THE BURY LINE ELEVATIONS SHOWN ON THE DRAWINGS. ALL FIRE HYDRANTS SHALL BE RESTRAINED AND BUTTRESSED WITH CONCRETE IN ACCORDANCE WITH THE STANDARD DETAILS. THE SOIL AROUND THE FIRE HYDRANT SHALL BE COMPACTED IN ACCORDANCE WITH SECTION 1000 AND 1005 OF THE STANDARD SPECIFICATIONS.
 - THE CONTRACTOR SHALL NOT OPERATE ANY WATER MAIN VALVES ON THE EXISTING WATER SYSTEM.
 - ALL WATER HOUSE CONNECTIONS SHALL BE FOR INSIDE METER SETTINGS UNLESS OTHERWISE NOTED ON PLANS OR IN SPECIFICATIONS.
 - FOR SPRINKLER SYSTEM FOR ALL TOWN HOMES OR MULTI-FAMILY DWELLING UNITS SHOULD HAVE A MINIMUM OF 1' CONNECTION WITH A 3/4" METER.

CONTRACT No. 24-4746-D
 MAPLE LAWN FARMS
 BUSINESS DISTRICT AREA 2
 PARCEL "C-28"
 HOWARD COUNTY, MARYLAND
 DEPARTMENT OF PUBLIC WORKS

SEDIMENT CONTROL MEASURES WILL BE IMPLEMENTED IN ACCORDANCE WITH SECTION 306 OF THE SPECIFICATIONS & WITH SITE DRAWINGS SDP-12-059; DRAWINGS FOR SEDIMENT & EROSION CONTROL.

THIS DEVELOPMENT PLAN IS APPROVED FOR SOIL EROSION AND SEDIMENT CONTROL BY THE HOWARD COUNTY SOIL CONSERVATION DISTRICT.

APPROVED: *John R. Robertson* 7/24/12
 HOWARD S.C.D. DATE

DEPARTMENT OF PUBLIC WORKS
 HOWARD COUNTY, MARYLAND

Steve C. Cox 7/24/12
 CHIEF, BUREAU OF UTILITIES DATE

DEPARTMENT OF PLANNING AND ZONING
 HOWARD COUNTY, MARYLAND

Michael J. ... 7/25/12
 CHIEF, DEVELOPMENT ENGINEERING DIVISION DATE

GLWGUTSCHICK LITTLE & WEBER, P.A.
 CIVIL ENGINEERS, LAND SURVEYORS, LAND PLANNERS, LANDSCAPE ARCHITECTS
 3909 NATIONAL DRIVE - SUITE 250 - BURTOWNSVILLE OFFICE PARK
 BURTOWNSVILLE, MARYLAND 20896
 TEL: 301-421-4024 BALT: 410-880-1820 DC/VA: 301-899-2524 FAX: 301-421-4186

DATE: JULY, 2012
 G.L.W. No. 11095

PROFESSIONAL CERTIFICATION:
 I HEREBY CERTIFY THAT THESE PLANS WERE PREPARED OR APPROVED BY ME, AND THAT I AM A DULY LICENSED PROFESSIONAL ENGINEER UNDER THE LAWS OF THE STATE OF MARYLAND.
 LICENSE NO. 12875
 EXP. DATE: MAY 26, 2014

Michael J. ...
 PROFESSIONAL ENGINEER

REVISION

NO.	BY	DATE	REVISION
1	KCL	10/22/13	AS BUILT

TITLE SHEET

600' SCALE MAP NO. 46 BLOCK NO. 4

OWNER:
 MAPLE LAWN CC STATUTORY TRUST
 C/O GREENBAUM AND ROSE
 1829 REISTERSTOWN ROAD, SUITE 300
 BALTIMORE, MARYLAND 21206
 ATTN.: MARK BENNETT
 410-484-8400

DEVELOPER:
 ST. JOHN PROPERTIES
 2560 LORD BALTIMORE DRIVE
 BALTIMORE, MARYLAND 21244
 ATTN.: ANDREW ROUD
 410-788-0100

MAPLE LAWN FARMS
 CONTRACT No. 24-4746-D
 BUSINESS DISTRICT - AREA 2
 PARCEL "C-28" (OFFICE BUILDING No.6)
 PLAT Nos. and
 HOWARD COUNTY, MARYLAND
 ELECTION DISTRICT No. 5

SCALE AS SHOWN

SHEET 1 OF 3

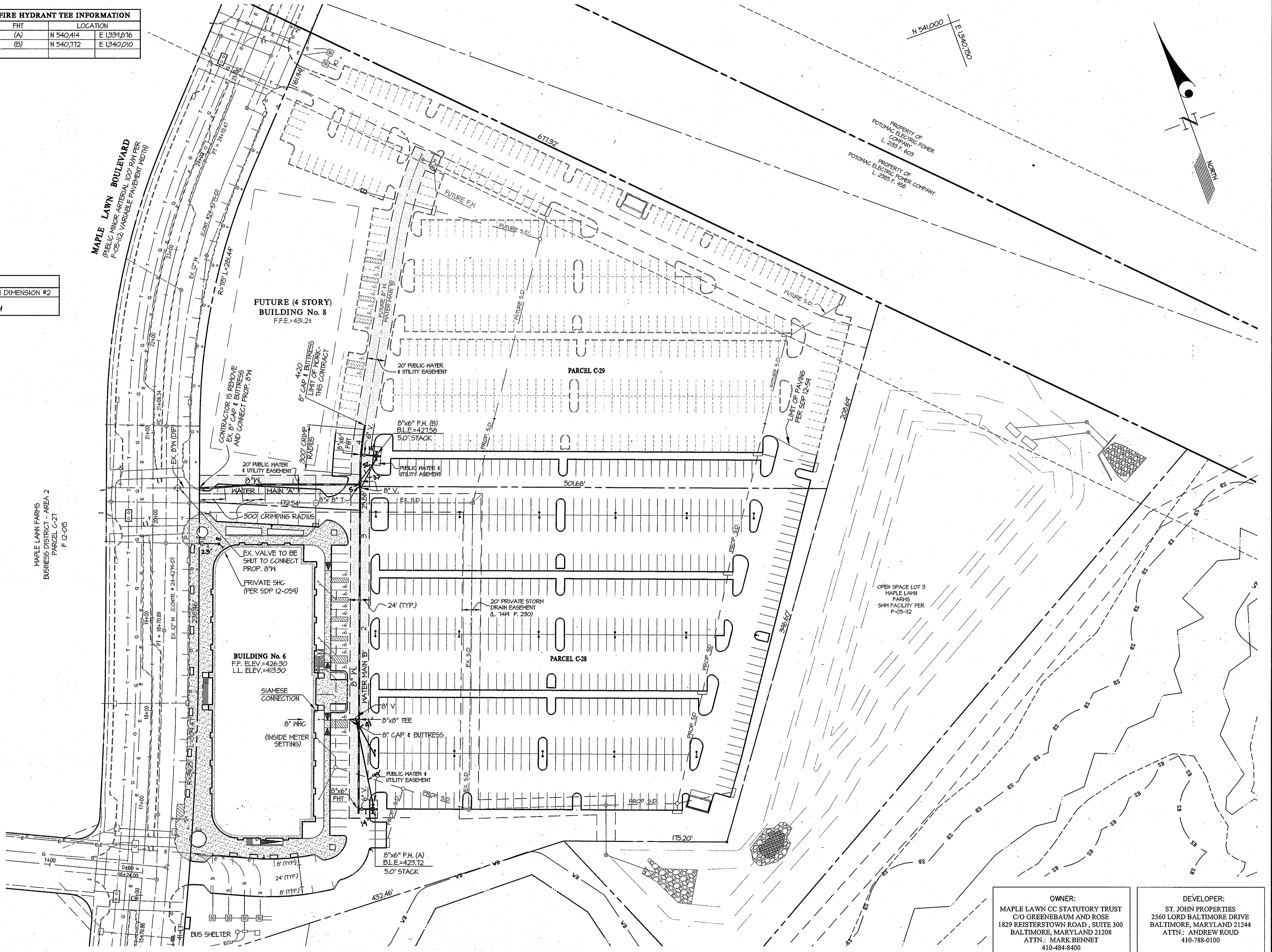
L:\CADD\DRAWINGS\96079\11095\PLANS BY CDM\WATER\Final\11095-01W.dwg, Job: J. Sabin, PLOTTED: 7/27/2012 1:57 PM, USER: SAKIBZ/7/27/2012 1:57 PM, PLOTTER: HP DesignJet 5000

FITTING CHART			
STATION	FITTING	NAD '83/91 COORDINATES	
WATER MAIN 'B'			
0+00	8" CAP & BUTTRESS	N 540,415	E 1334,980
0+05	8" x 6" F.H.T.	N 540,420	E 1334,862
3+55	8" x 8" T.	N 540,144	E 1334,983
3+88	8" x 6" F.H.T.	N 540,114	E 1334,985
4+20	8" CAP & BUTTRESS	N 540,801	E 1340,010

FIRE HYDRANT TEE INFORMATION		
FHT	LOCATION	
(A)	N 540,414	E 1334,816
(B)	N 540,112	E 1340,010

CRIMPING RADII INFORMATION			
STATION	FITTING	NAD '83/91 COORDINATES	
WATER MAIN 'A'			
0+00	P.C.	N 540,804	E 1334,820
0+21	P.T.	N 540,116	E 1334,845
0+45	P.C.	N 540,111	E 1334,863
0+70	P.T.	N 540,184	E 1334,881
WATER MAIN 'B'			
3+65	P.C.	N 540,154	E 1334,881
4+14	P.T.	N 540,803	E 1340,008

VALVE WATER HOUSE CONNECTION AS-BUILT LOCATION TABLE			
O.B. #6	ADDRESS	LOCATION DIMENSION #1	LOCATION DIMENSION #2
	8135 MAPLE LAWN BOULEVARD	41' TO LIGHT BASE	99' TO F.H.



L:\CAD\DRAWINGS\96079\11085\PLANS BY GUY\WATER\Plan\11085-026.dwg PLOTTED: 7/11/2012 1:51 PM, LAST SAVED: 7/11/2012 1:49 PM, PLOTTED BY: John J. Sobiech

DEPARTMENT OF PUBLIC WORKS
HOWARD COUNTY, MARYLAND

John J. Sobiech
7/20/12
CHIEF, BUREAU OF UTILITIES DATE

DEPARTMENT OF PLANNING AND ZONING
HOWARD COUNTY, MARYLAND

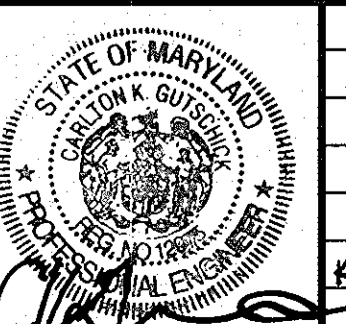
John J. Sobiech
7/20/12
CHIEF, DEVELOPMENT ENGINEERING DIVISION DATE

GLW GUTSCHICK LITTLE & WEBER, P.A.
CIVIL ENGINEERS, LAND SURVEYORS, LAND PLANNERS, LANDSCAPE ARCHITECTS
3909 NATIONAL DRIVE - SUITE 250 - BURTONSVILLE OFFICE PARK
BURTONSVILLE, MARYLAND 20886
TEL: 301-421-4024 BAL: 410-880-1820 DC/VA: 301-889-2524 FAX: 301-421-4186

DATE: JULY, 2012
G.L.W. No. 11095
DES. DEV DRN. GT. CHK. CKG

PROFESSIONAL CERTIFICATION
I HEREBY CERTIFY THAT THESE PLANS WERE PREPARED OR APPROVED BY ME, AND THAT I AM A DULY LICENSED PROFESSIONAL ENGINEER UNDER THE LAWS OF THE STATE OF MARYLAND, LICENSE NO. 12975
EXP. DATE: MAY 26, 2014

John J. Sobiech
7-11-12



BY	NO	REVISION	DATE
KCI	1	AS BUILT	10/22/13

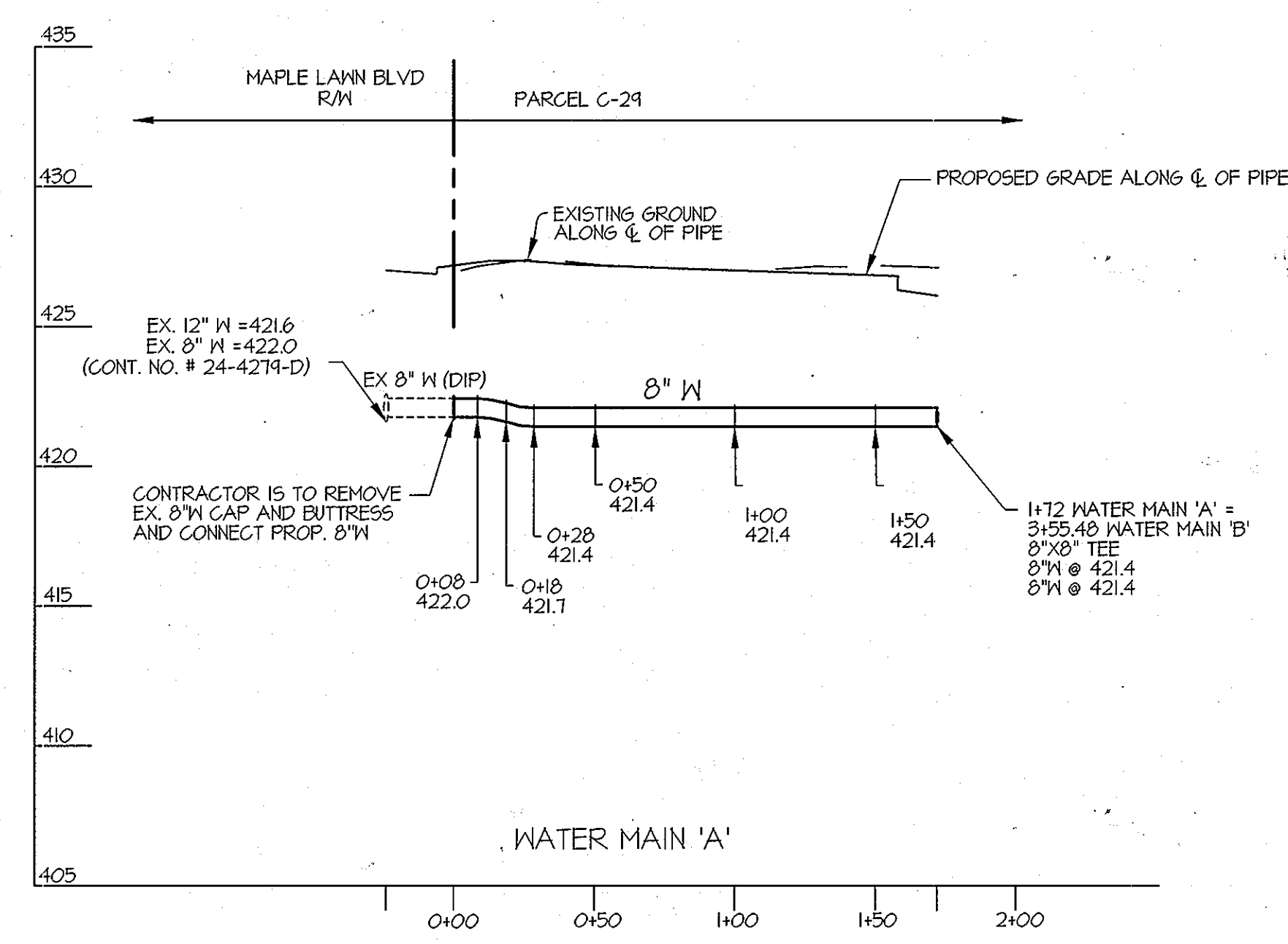
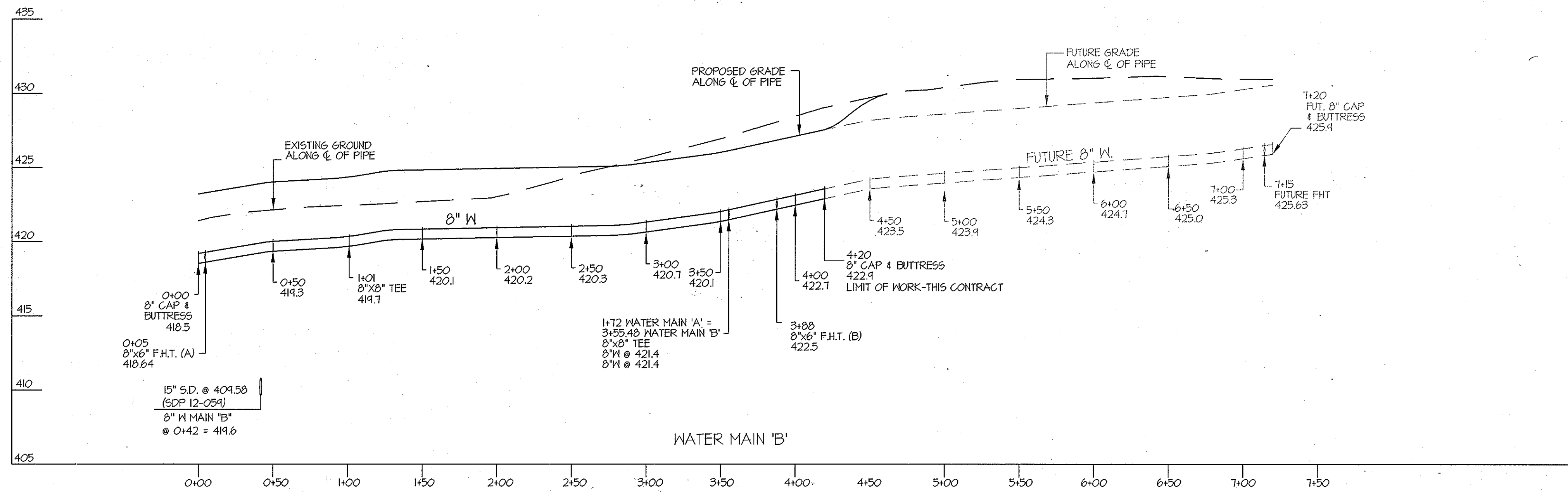
WATER EXTENSION PLAN
600' SCALE MAP NO. 46 BLOCK NO. 4

OWNER:
MAPLE LAWN CC STATUTORY TRUST
C/O GREENBAUM AND ROSE
1829 REISTERSTOWN ROAD, SUITE 300
BALTIMORE, MARYLAND 21208
ATTN: MARK BENNETT
410-484-8400

DEVELOPER:
ST. JOHN PROPERTIES
2560 LORD BALTIMORE DRIVE
BALTIMORE, MARYLAND 21244
ATTN: ANDREW ROUD
410-788-0100

MAPLE LAWN FARMS
CONTRACT No. 24 -4746-D
BUSINESS DISTRICT - AREA 2
PARCEL 'C - 28' (OFFICE BUILDING No.6)
PLAT Nos. and
HOWARD COUNTY, MARYLAND
ELECTION DISTRICT No. 5

SCALE
1" = 50'
SHEET
2 OF 3



OWNER:
 MAPLE LAWN CC STATUTORY TRUST
 C/O GREENEBAUM AND ROSE
 1829 REISTERSTOWN ROAD, SUITE 300
 BALTIMORE, MARYLAND 21208
 ATTN: MARK BENNETT
 410-484-8400

DEVELOPER:
 ST. JOHN PROPERTIES
 2560 LORD BALTIMORE DRIVE
 BALTIMORE, MARYLAND 21244
 ATTN: ANDREW ROUD
 410-788-0100

DEPARTMENT OF
 PUBLIC WORKS
 HOWARD COUNTY, MARYLAND

John A. Sabbe
 CHIEF, BUREAU OF UTILITIES

DEPARTMENT OF
 PLANNING AND ZONING
 HOWARD COUNTY, MARYLAND

Mark Bennett
 CHIEF, DEVELOPMENT ENGINEERING DIVISION

GLW GUTSCHICK LITTLE & WEBER, P.A.
 CIVIL ENGINEERS, LAND SURVEYORS, LAND PLANNERS, LANDSCAPE ARCHITECTS
 3909 NATIONAL DRIVE - SUITE 250 - BURTONSVILLE OFFICE PARK
 BURTONSVILLE, MARYLAND 20866
 TEL: 301-421-4024 BAL: 410-880-1820 DC/VA: 301-989-2524 FAX: 301-421-4186

DATE
 JULY,
 2012

G.L.W. No.
 11095

PROFESSIONAL CERTIFICATION
 I HEREBY CERTIFY THAT THESE PLANS
 WERE PREPARED OR APPROVED BY ME,
 AND THAT I AM A DULY LICENSED
 PROFESSIONAL ENGINEER UNDER THE
 LAWS OF THE STATE OF MARYLAND,
 LICENSE NO. 12975
 EXP. DATE: MAY 26, 2014

Mark Bennett
 PROFESSIONAL ENGINEER

BY	NO	REVISION	DATE

WATER EXTENSION PROFILES

600' SCALE MAP NO. 46 BLOCK NO. 4

MAPLE LAWN FARMS
 CONTRACT No. 24 -4746-D
 BUSINESS DISTRICT - AREA 2
 PARCEL 'C' - 28' (OFFICE BUILDING No.6)
 PLAT Nos. and
 HOWARD COUNTY, MARYLAND
 ELECTION DISTRICT No. 5

SCALE
 1"=50' vert.
 1"=5' horz.

SHEET
 3 OF 3

L:\CAD\DRAWINGS\86079\11095\PLANS BY GUY\WATER\Final\11095-03W.dwg
 PLOTTED: 7/17/2012 1:55 PM, LAST SAVED: 7/9/2012 2:02 PM, PLOTTED BY: John A. Sabbe