

QUANTITIES				
ITEM	ESTIMATED	AS-BUILT	TYPE	SUPPLIER
Ø5	400 L.F.	484 L.F.	SDR 35	HD Supply
Ø5	326 L.F.	402.5 L.F.	SDR 35	HD Supply
MANHOLE	4 EACH	4	Precast	Atlantic Concrete Products Inc.
Ø PLUG	1 EACH	1	SDR 35	HD Supply
2" L.P.S.				
2" L.P.S.	356 L.F.	355 L.F.	SDR 11	HD Supply
1-1/2" L.P.S.	177 L.F.	177 L.F.	SDR 11	HD Supply
1-1/4" L.P.S.	302 L.F.	304 L.F.	SDR 11	HD Supply
4" VALVE	2 EACH	1	Gate Valve	HD Supply
SIMPLEX GRINDER PUMP UNIT	6 EACH	6	DR 152	E/ONE
DUPLEX GRINDER PUMP UNIT	2 EACH	2	DR 152	E/ONE
2"x1-1/2" REDUCER	1 EACH	1	PVC Fitting	HD Supply
2"x1-1/4" TEE	3 EACH	3	PVC Fitting	HD Supply
1-1/2"x1-1/4" TEE	5 EACH	5	PVC Fitting	HD Supply
2" - 1/8 H.B.	1 EACH	1	PVC Fitting	HD Supply
1-1/2" - 1/8 H.B.	2 EACH	1	PVC Fitting	HD Supply
1-1/2" - 1/16 H.B.	1 EACH	1	PVC Fitting	HD Supply
2" - 1/32 H.B.	2 EACH	DELETED		
CONTINUITY TEST STATION	1 EACH	1	Concrete Meter Pit	HD Supply
TERMINAL FLUSHING CONNECTION & CONTINUITY TEST STATION	1 EACH	1	Precast	Atlantic Concrete Products Inc.
Ø" W.				
Ø" W.	376 L.F.	376 L.F.	C900	HD Supply
1-1/2" W.C.	177 L.F.	177 L.F.	C900	HD Supply
1-1/2" W.C.	361 L.F.	409 L.F.	Copper	HD Supply
1-1/2" DRAIN	1 EACH	1	Copper	HD Supply
CONTINUITY TEST STATION	1 EACH	1	Concrete Meter Pit	HD Supply
1/8 H.B.	1 EACH	1	D.I. Fittings	HD Supply
1/32 H.B.	4 EACH	4	D.I. Fittings	HD Supply
1/2" TAPPING SLEEVE	1 EACH	1	S.S. Tapping Sleeve	HD Supply
Ø" TAPPING VALVE	1 EACH	1	Tapping Valve	HD Supply
Ø" VALVE	1 EACH	1	Gate Valve	HD Supply
Ø"x6" F.H. TEE	1 EACH	1	D.I. Fittings	HD Supply
Ø" PLUG & BUTTRESS	1 EACH	1	D.I. Fittings	HD Supply
Ø"x6" REDUCER	1 EACH	1	D.I. Fittings	HD Supply
FIRE HYDRANT	1 EACH	1	C502	HD Supply
SINGLE OUTSIDE METER SETTING	11 EACH	11	Concrete Meter Pit	HD Supply

BENCHMARK INFORMATION

B.M.#1 - HOWARD COUNTY CONTROL STATION #46CB - HORIZONTAL - NAD '83 (LOCATED ALONG THE NORTH SIDE OF OLD SCAGGSVILLE ROAD, JUST EAST OF JANDY AVE. APPROX. 2.7' BEHIND EDGE OF SIDEWALK. BETWEEN VERIZON BOX AND G&E POLE #51397)
 N 537,123.0425
 E 1,344,291.3654
 ELEVATION = 394.623 - VERTICAL - (NAVD '80)

B.M.#2 - HOWARD COUNTY CONTROL STATION #46FD - HORIZONTAL - NAD '83 (LOCATED ALONG THE SOUTH SIDE OF OLD SCAGGSVILLE ROAD, JUST EAST OF PINENEY DRIVE, APPROX. 2.7' BEHIND EDGE OF SIDEWALK. BETWEEN G&E POLE 204733 AND FIBER OPTIC STAUNCHION)
 N 535,092.9111
 E 1,345,540.0033
 ELEVATION = 379.922 - VERTICAL - (NAVD '80)

DEVELOPER'S CERTIFICATION

I/WE HEREBY CERTIFY THAT ALL DEVELOPMENT AND CONSTRUCTION WILL BE DONE ACCORDING TO THIS PLAN OF DEVELOPMENT AND PLAN FOR EROSION AND SEDIMENT CONTROL AND THAT ALL RESPONSIBLE PERSONNEL INVOLVED IN THE CONSTRUCTION PROJECT WILL HAVE A CERTIFICATE OF ATTENDANCE AT THE DEPARTMENT OF THE ENVIRONMENT APPROVED TRAINING PROGRAM FOR THE CONTROL OF SEDIMENT AND EROSION BEFORE BEGINNING THE PROJECT. I ALSO AUTHORIZE PERIODIC ON-SITE INSPECTION BY THE HOWARD SOIL CONSERVATION DISTRICT OR THEIR AUTHORIZED AGENTS, AS ARE DEEMED NECESSARY.

Paul W. Kriebel, FOR:
 FAL DEVELOPERS, L.L.C. 05/20/11
 SIGNATURE OF DEVELOPER DATE

ENGINEER'S CERTIFICATION

I HEREBY CERTIFY THAT THIS PLAN FOR EROSION AND SEDIMENT CONTROL REPRESENTS A PRACTICAL AND WORKABLE PLAN BASED ON MY PERSONAL KNOWLEDGE OF THE SITE CONDITIONS AND THAT IT WAS PREPARED IN ACCORDANCE WITH THE REQUIREMENTS OF THE HOWARD SOIL CONSERVATION DISTRICT.

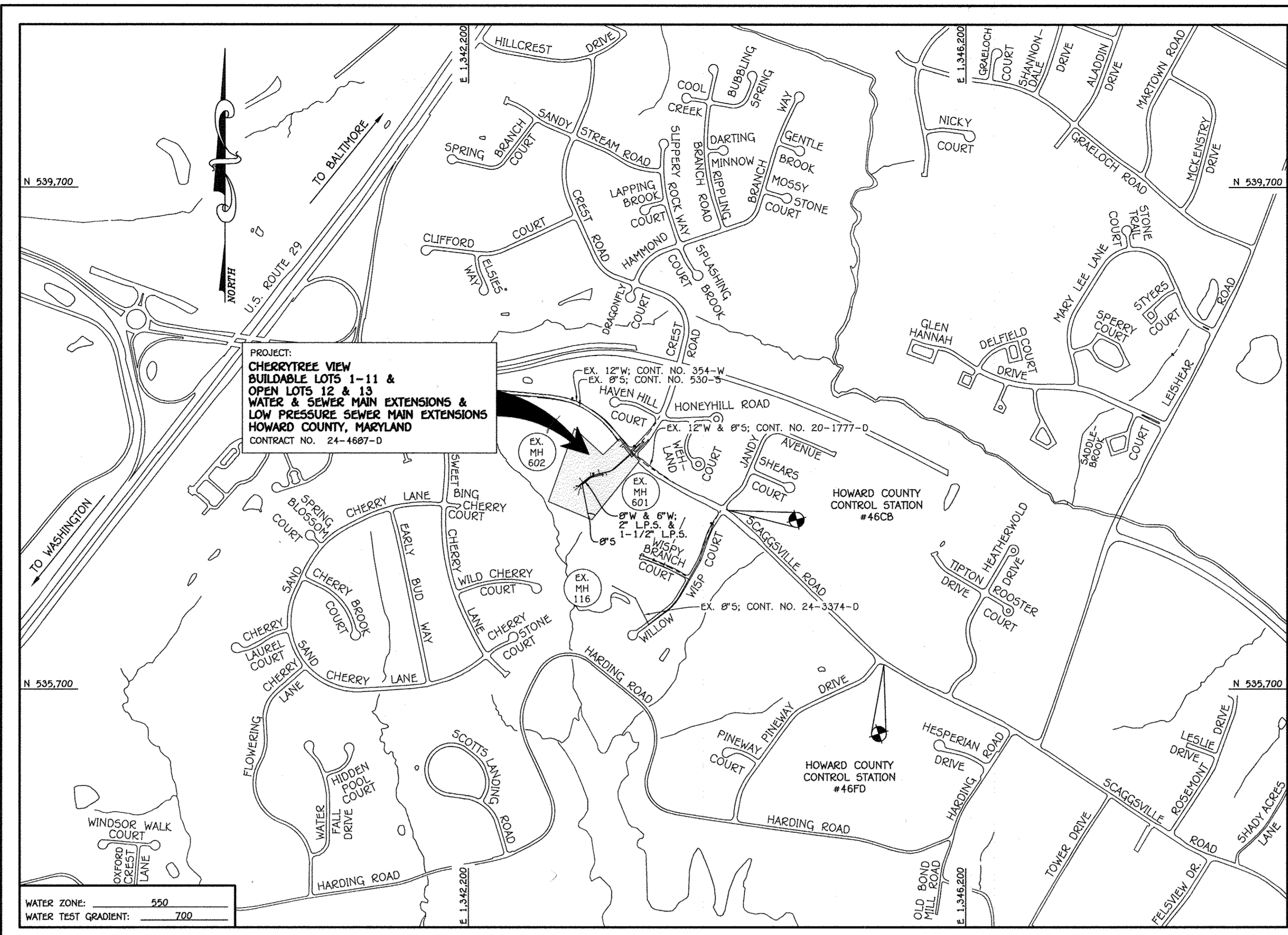
Paul W. Kriebel, FOR:
 FAL DEVELOPERS, L.L.C. 05-20-11
 SIGNATURE OF ENGINEER DATE

SEDIMENT CONTROL MEASURES FOR THIS CONTRACT WILL BE IMPLEMENTED IN ACCORDANCE WITH SECTION 309 OF THE HOWARD COUNTY DESIGN MANUAL - VOLUME IV, STANDARD SPECIFICATIONS AND DETAILS FOR CONSTRUCTION AND AS SHOWN ON THE ROAD CONSTRUCTION PLAN, F-11-XXXX.

Paul W. Kriebel, FOR:
 FAL DEVELOPERS, L.L.C. 06/20/11
 SIGNATURE OF DEVELOPER DATE

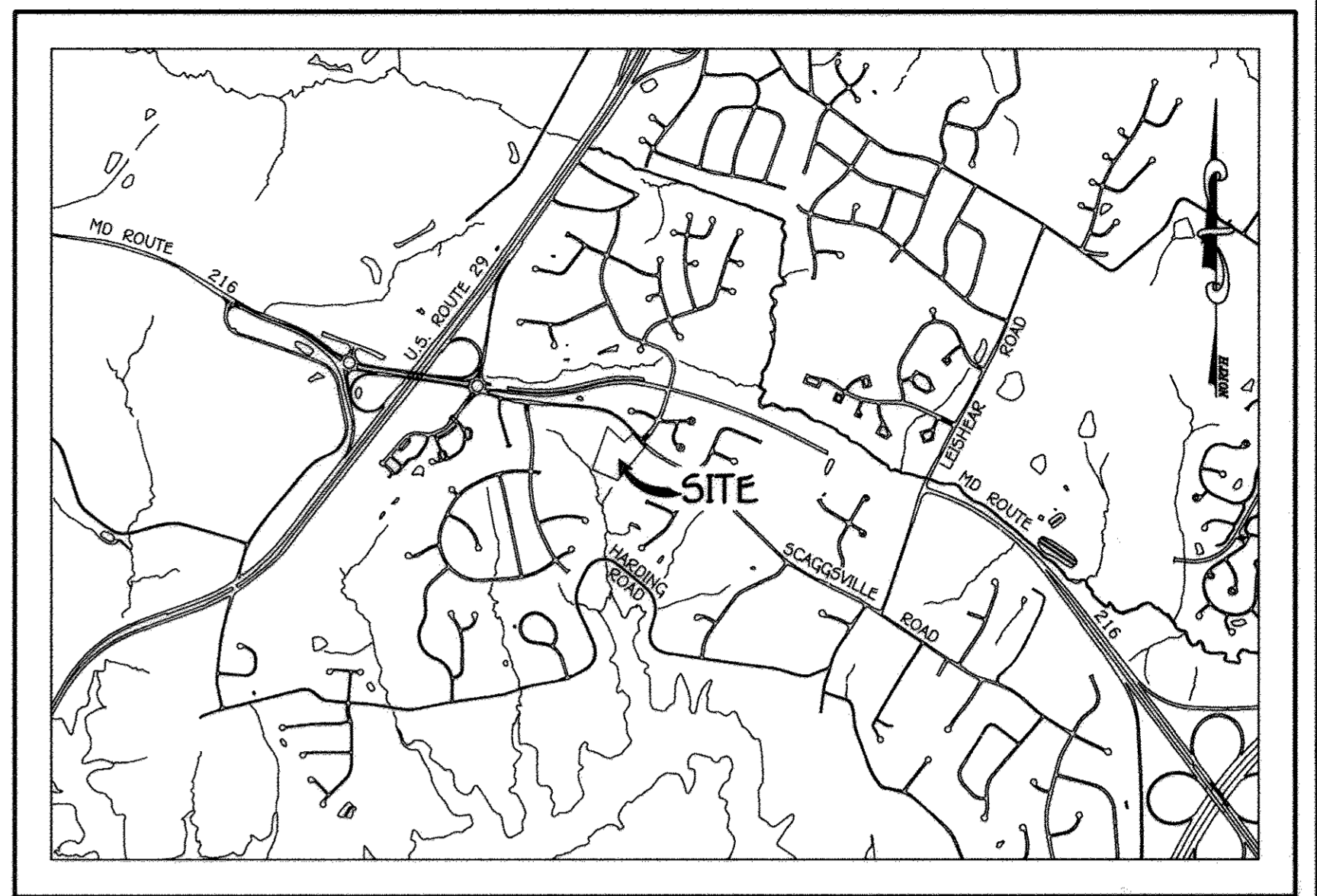
THIS DEVELOPMENT IS APPROVED FOR EROSION AND SEDIMENT CONTROL BY HOWARD SOIL CONSERVATION DISTRICT.

APPROVED: *John R. Robertson* 6/16/11
 HOWARD SOIL CONSERVATION DISTRICT DATE



LOCATION MAP
SCALE: 1" = 600'

TYPE OF BUILDING: RESIDENTIAL - SINGLE FAMILY DETACHED
 NUMBER OF LOTS: 12 TOTAL, 11 BUILDABLE & 2 OPEN SPACE
 NO. OF WATER HOUSE CONNECTIONS: 10
 NO. OF SEWER HOUSE CONNECTIONS: 10
 SEWER SHED: LITTLE PATUXENT
 TREATMENT PLANT: LITTLE PATUXENT WASTEWATER TREATMENT FACILITY
 PUMPING STATION: WILLOWS OF ROCKY GORGE



- GENERAL NOTES**
SCALE: 1" = 200'
- PART A:
- APPROXIMATE LOCATIONS OF EXISTING MAINS ARE SHOWN. THE CONTRACTOR SHALL TAKE ALL NECESSARY PRECAUTIONS TO PROTECT EXISTING MAINS AND SERVICES AND MAINTAIN UNINTERRUPTED SERVICE. ANY DAMAGE INCURRED SHALL BE REPAIRED IMMEDIATELY TO THE SATISFACTION OF THE ENGINEER AT THE CONTRACTOR'S EXPENSE.
 - TOPOGRAPHIC FIELD SURVEYS WERE PERFORMED ON OR ABOUT MAY, 2010 BY FISHER, COLLINS & CARTER, INC.
 - HORIZONTAL AND VERTICAL SURVEY CONTROLS: THE COORDINATES SHOWN IN THE DRAWINGS ARE BASED ON MARYLAND STATE REFERENCE SYSTEM NAD '83/91' AS PROJECTED BY HOWARD COUNTY GEODETIC CONTROL STATIONS NO. 46CB & NO. 46FD. ALL VERTICAL CONTROLS ARE AS INDICATED IN THE BENCHMARK INFORMATION. VERTICAL CONTROLS PROVIDED ON THE DRAWINGS.
 - ALL PIPE ELEVATIONS SHOWN ARE INVERT ELEVATIONS UNLESS OTHERWISE NOTED ON THE PLANS.
 - CLEAR ALL UTILITIES BY A MINIMUM OF 12 INCHES. CLEAR ALL POLES BY 5'-0" MINIMUM OR TUNNEL AS REQUIRED UNLESS OTHERWISE NOTED. THE OWNER HAS CONTACTED THE UTILITY COMPANIES AND HAS MADE ARRANGEMENTS FOR BRACING OF POLES AS SHOWN ON THE DRAWINGS. IN THE EVENT THE CONTRACTOR'S WORK REQUIRES BRACING OF ADDITIONAL POLES, ANY COST INCURRED BY THE OWNER FOR THE BRACING OF THE ADDITIONAL POLES OR DAMAGES SHALL BE DEDUCTED FROM MONIES OWED TO THE CONTRACTOR. THE CONTRACTOR SHALL COORDINATE WITH THE UTILITY COMPANIES TO SCHEDULE THE BRACING OF THE POLES.
 - FOR DETAILS NOT SHOWN ON THE DRAWINGS, AND FOR MATERIALS AND CONSTRUCTION METHODS, USE HOWARD COUNTY DESIGN MANUAL, VOLUME IV, STANDARD SPECIFICATIONS AND DETAILS FOR CONSTRUCTION (LATEST EDITION). THE CONTRACTOR SHALL HAVE A COPY OF VOLUME IV ON THE JOB SITE.
 - WHERE TEST PITS HAVE BEEN MADE ON EXISTING UTILITIES, THEY ARE NOTED BY THE SYMBOL (S) AT THE LOCATIONS OF THE TEST PITS. A NOTE OR NOTES CONTAINING THE RESULTS OF THE TEST PIT OR PITS IS NOTED ON THE DRAWINGS. EXISTING UTILITIES IN THE VICINITY OF THE PROPOSED WORK, FOR WHICH TEST PITS HAVE NOT BEEN DUG SHALL BE LOCATED BY THE CONTRACTOR TWO WEEKS IN ADVANCE OF CONSTRUCTION OPERATIONS AT HIS OWN EXPENSE.
 - THE CONTRACTOR SHALL NOTIFY THE FOLLOWING UTILITY COMPANIES OR AGENCIES AT LEAST FIVE WORKING DAYS BEFORE STARTING WORK SHOWN ON THESE PLANS:
 AT&T (CONSTRUCTION SERVICES) 1-800-292-1133
 BGE (EMERGENCY) 410-637-8713
 BUREAU OF UTILITIES 410-313-4900
 COLONIAL PIPELINE CO. 410-795-1390
 MESS UTILITY 1-800-297-7777
 STATE HIGHWAY ADMINISTRATION 410-531-5533
 VERIZON 1-800-743-0033
 - TREES AND SHRUBS ARE TO BE PROTECTED FROM DAMAGE TO THE MAXIMUM EXTENT. TREES AND SHRUBS LOCATED WITHIN THE CONSTRUCTION STRIP ARE NOT TO BE REMOVED OR DAMAGED BY THE CONTRACTOR.
 - CONTRACTOR SHALL REMOVE TREES, STUMPS AND ROOTS ALONG THE LINE OF EXCAVATION. PAYMENT FOR SUCH REMOVAL SHALL BE INCLUDED IN THE UNIT PRICE BID FOR THE CONSTRUCTION OF THE MAIN.
 - THE CONTRACTOR SHALL NOTIFY THE BUREAU OF HIGHWAYS, HOWARD COUNTY, AT (410)-313-7450 AT LEAST FIVE WORKING DAYS BEFORE OPEN CUTTING OR BORING/JACKING OF ANY COUNTY ROAD FOR LAYING WATER/SEWER MAINS OR CONNECTIONS. THE APPROVAL OF THESE DRAWINGS WILL CONSTITUTE COMPLIANCE WITH DPW REQUIREMENTS PER SECTION 10.114(a) OF THE HOWARD COUNTY CODE.
- PART B: WATER MAIN GENERAL NOTES
- ALL WATER MAINS SHALL BE AWWA C900 PVC UNLESS OTHERWISE NOTED.
 - TOPS OF ALL WATER MAINS SHALL HAVE A MINIMUM OF 3'-6" OF COVER UNLESS OTHERWISE NOTED.
 - VALVES ADJACENT TO TEES SHALL BE STRAPPED TO TEES.
 - ALL FITTINGS SHALL BE BUTTRESSED OR ANCHORED WITH CONCRETE IN ACCORDANCE WITH STANDARD DETAILS UNLESS OTHERWISE PROVIDED FOR ON THE DRAWINGS.
 - FIRE HYDRANTS SHALL BE SET TO THE BURY LINE ELEVATIONS SHOWN ON THE DRAWINGS. ALL FIRE HYDRANTS SHALL BE INSTALLED IN ACCORDANCE WITH STANDARD DETAILS. THE SOIL AROUND THE FIRE HYDRANT SHALL BE COMPACTED IN ACCORDANCE WITH SECTION 1000 AND SECTION 1005 OF THE STANDARD SPECIFICATIONS.
 - THE CONTRACTOR SHALL NOT OPERATE ANY WATER MAIN VALVES ON THE EXISTING WATER SYSTEM.
 - FOR PVC WATER MAINS, ALL RECORDS FOR THE QUALITY CONTROL AND QUALIFICATION TEST REQUIREMENTS NOTED IN SECTION 5.1 OF THE AWWA STANDARD C900 FOR PVC PRESSURE PIPE SHALL BE SUBMITTED WITH THE PIPE MATERIAL. CERTIFICATIONS OR SHOP DRAWINGS PRIOR TO APPROVAL OF THE MATERIAL FOR USE. THE TEST RECORDS SHALL BE FOR THE PIPE TO BE INSTALLED UNDER THIS CONTRACT. ALL PVC PIPE SHALL CONTAIN MARKINGS TO ALLOW CROSS REFERENCING OF THE PIPE SUPPLIED TO THE TEST RECORDS RECEIVED.
 - UNLESS OTHERWISE NOTED ON THE PLANS OR IN THE SPECIFICATIONS, SEVENTEEN (17) POUND SACRIFICIAL ANODES SHALL BE INSTALLED ON ALL VALVES AND METALLIC FITTINGS USED WITH PVC WATER MAINS IN ACCORDANCE WITH VOLUME IV, STANDARD SPECIFICATIONS AND DETAILS FOR CONSTRUCTION. MAGNESIUM ANODES SHALL BE INSTALLED ON ALL VALVES AND DUCTILE IRON FITTINGS INCLUDING RESTRAINTS AND HARNESSSES. ZINC ANODES SHALL BE INSTALLED ON ALL STAINLESS STEEL FITTINGS AND SADDLES USED WITH PVC MAINS. ALL "TEES" USED WITH PVC MAINS SHALL BE DUCTILE IRON.
 - ALL DWELLING UNITS SHALL HAVE A 1-1/2" WATER HOUSE CONNECTION WITH A 1" OUTSIDE METER SETTING. STD. DET. W-3.28.
- PART C: SEWER MAIN GENERAL NOTES
- ALL SEWER MAINS SHALL BE D.I.P. OR P.V.C. AS SPECIFIED ON PLANS.
 - ALL MANHOLES SHALL BE 4'-0" INSIDE DIAMETER UNLESS OTHERWISE NOTED.
 - FORCE MAINS SHALL BE D.I.P. ONLY.
 - MANHOLES SHOWN WITH 12" AND 16" WALLS ARE FOR BRICK MANHOLES ONLY.
 - MANHOLES DESIGNATED W.T. IN PLAN AND PROFILE SHALL HAVE WATERIGHT FRAME AND COVER, STANDARD DETAIL C5.52. WHEN THE WATERIGHT MANHOLE FRAMES AND COVERS ARE USED, SET TOP OF FRAME 1'-6" ABOVE FINISHED GRADE UNLESS OTHERWISE NOTED ON THE DRAWINGS.
 - HOUSE(S) WITH THE SYMBOL "C.N.S." INDICATES THAT CELLAR CANNOT BE SERVED.
 - LOW PRESSURE SEWER MAINS SHALL BE HDPE, SD-44.
 - A TOTAL OF TEN (10) LOTS ARE CONNECTED TO THE LOW PRESSURE SEWER SYSTEM.
 - TRACER WIRE SHALL BE PROVIDED OVER ALL LOW PRESSURE SEWER MAINS. TRACER WIRE SHALL BE OVERLAPPING, INSULATED #6 - AND FIRMLY CONNECTED AND ENCAPSULATED.
 - REFER TO DETAILS ON SHEET OF FOR NOTES, REQUIREMENTS & SPECIFICATIONS REGARDING THE GRINDER-PUMP & HOUSING & THE ASSOCIATED GRINDER-PUMP CONTROL PANEL.

CONTRACT NO. 24-4687-D

CHERRYTREE VIEW

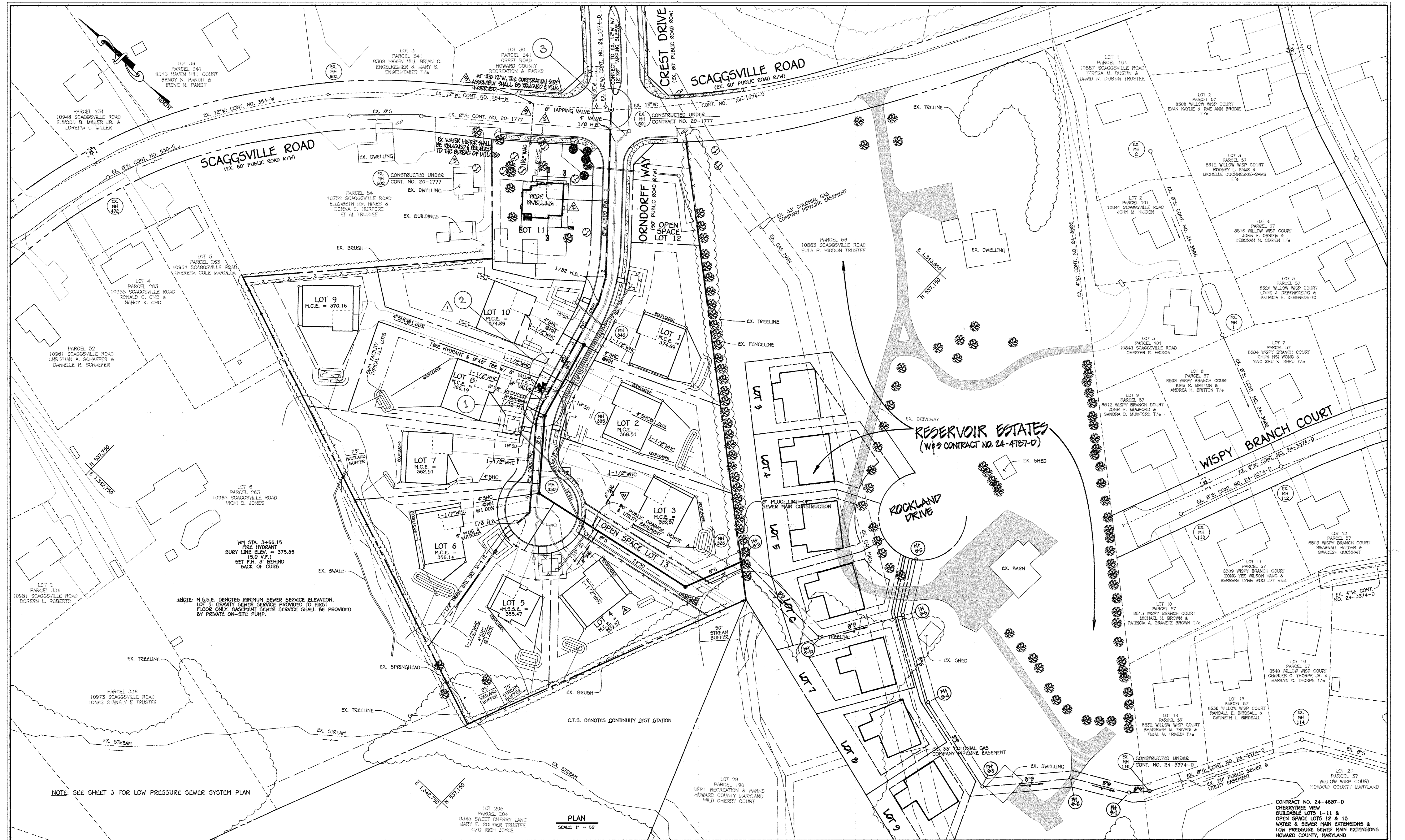
BUILDABLE LOTS 1-11 & 12 & 13

WATER & SEWER MAIN EXTENSIONS & LOW PRESSURE SEWER MAIN EXTENSIONS

HOWARD COUNTY, MARYLAND

AS-BUILT REVISED AS OF 3/1/17,
 AFTER CONVERSION TO GRAVITY SYSTEM.

<p>DEPARTMENT OF PUBLIC WORKS HOWARD COUNTY, MARYLAND</p> <p><i>John R. Robertson</i> CHIEF, BUREAU OF UTILITIES DATE: 6/20/11</p>	<p>DEPARTMENT OF PLANNING AND ZONING HOWARD COUNTY, MARYLAND</p> <p><i>Paul W. Kriebel</i> CHIEF, DEVELOPMENT ENGINEERING DIVISION DATE: 6/20/11</p>	<p>I HEREBY CERTIFY THAT THESE DOCUMENTS WERE PREPARED OR APPROVED BY ME, AND THAT I AM A DULY LICENSED PROFESSIONAL ENGINEER UNDER THE LAWS OF THE STATE OF MARYLAND. LICENSE NO. 12043 EXPIRATION DATE 5/31/12.</p> <p><i>Paul W. Kriebel</i> PAUL W. KRIEBEL</p>	<p>DESIGNED BY: B.C.R. DRAWN BY: B.C.R. CHECKED BY: P.W.K. DATE: MAY, 2011</p> <p>REVISION: 1. CHANGE QUANTITIES IN TABLE TO MATCH INSTALLATION FOR LOT 11 2. Completed Quantities Table</p>	<p>600' SCALE MAP NO. 46 BLOCK NO. 11 F.C.C. WORK ORDER NO. 10014 FILE NAME: WATER & SEWER MAIN EXTENSION</p>	<p>OWNER HILEY A. ORNDORFF & W.F. 10509 SCAGGSVILLE ROAD LAUREL, MARYLAND 20723</p> <p>DEVELOPER FAL DEVELOPERS, L.L.C. 5300 DORSEY HALL DRIVE, SUITE 102 ELLICOTT CITY, MARYLAND 21042 ATTN: MR. DONALD R. REUWER, JR. 443-367-0422</p> <p>CHERRYTREE VIEW BUILDABLE LOTS 1-11 & OPEN SPACE LOTS 12 & 13 WATER & SEWER MAIN EXTENSIONS & LOW PRESSURE SEWER MAIN EXTENSIONS HOWARD COUNTY, MARYLAND</p>	<p>CONTRACT NO. 24-4687-D</p> <p>SCALE AS SHOWN</p> <p>SHEET 1 OF 8</p>
--	--	--	---	---	--	---



NOTE: M.S.S.E. DENOTES MINIMUM SEWER SERVICE ELEVATION.
 LOT 5: GRAVITY SEWER SERVICE PROVIDED TO FIRST FLOOR ONLY. BASEMENT SEWER SERVICE SHALL BE PROVIDED BY PRIVATE ON-SITE PUMP.

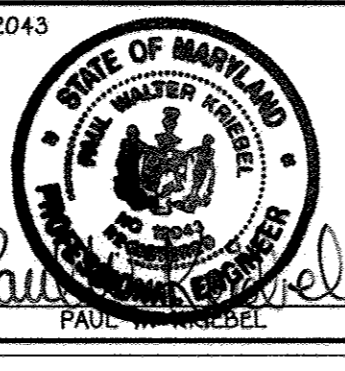
NOTE: SEE SHEET 3 FOR LOW PRESSURE SEWER SYSTEM PLAN

PLAN
 SCALE: 1" = 50'

DEPARTMENT OF PUBLIC WORKS
 HOWARD COUNTY, MARYLAND
 CHIEF, BUREAU OF UTILITIES
 DATE: 6/20/11

DEPARTMENT OF PLANNING AND ZONING
 HOWARD COUNTY, MARYLAND
 CHIEF, DEVELOPMENT ENGINEERING DIVISION
 DATE: 6/20/11

I HEREBY CERTIFY THAT THESE DOCUMENTS WERE PREPARED OR APPROVED BY ME, AND THAT I AM A DULY LICENSED PROFESSIONAL ENGINEER UNDER THE LAWS OF THE STATE OF MARYLAND.
 LICENSE NO. 12043 EXPIRATION DATE 5/7/16/12
FISHER, COLLINS & CARTER, INC.
 CIVIL ENGINEERING CONSULTANTS & LAND SURVEYORS
 CENTRAL SQUARE OFFICE PARK - 10232 BALDORNE NATIONAL PIKE
 ELLICOTT CITY, MARYLAND 21042
 (410) 461-2895

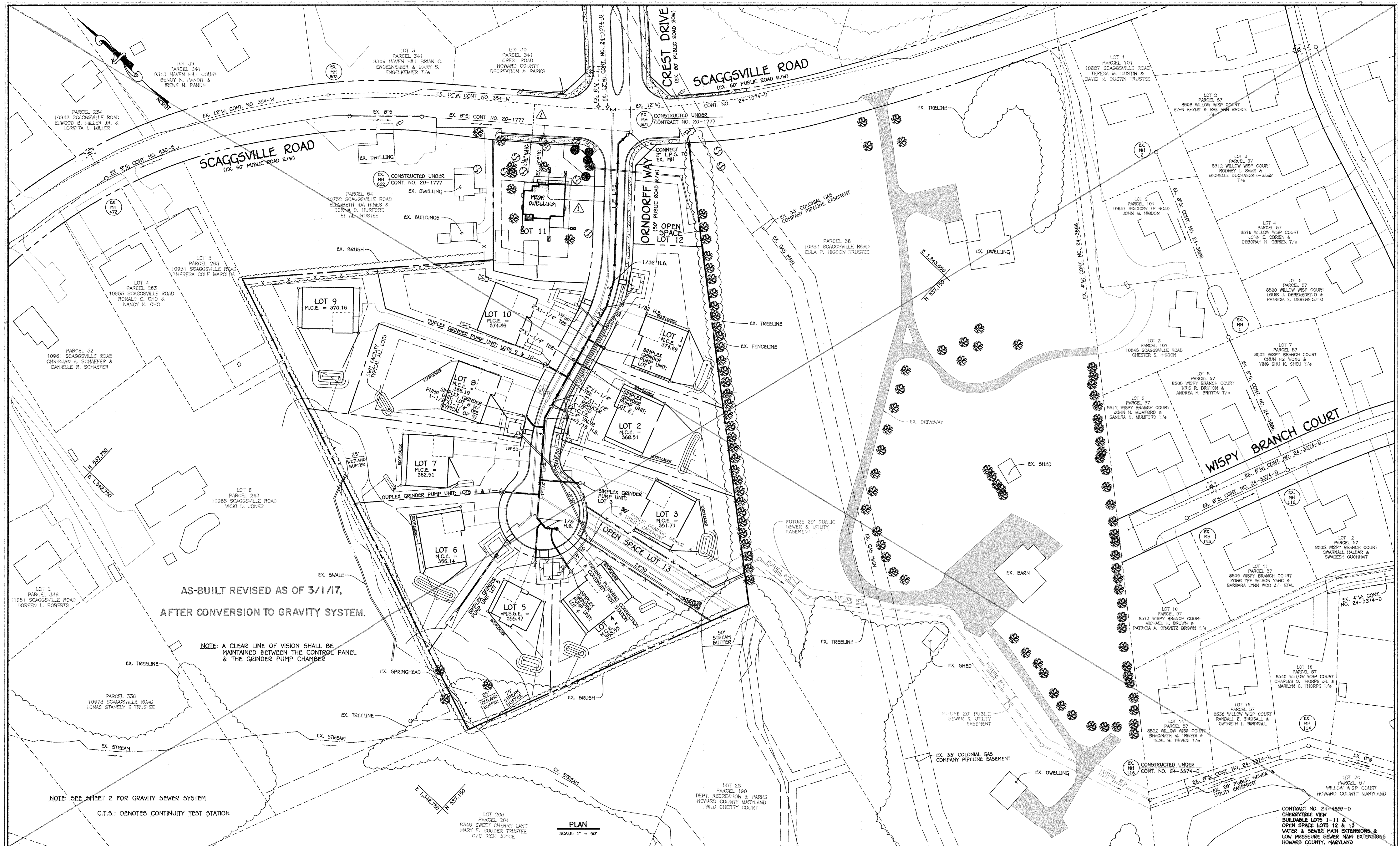


DESIGNED BY:	B.C.R.	DATE:	9/7/07
DRAWN BY:	PCC	DATE:	8/1/08
CHECKED BY:	PCC	DATE:	8/1/08
DATE:	6/15/12	BY:	NO.
REVISION:	SHOW NEW SHCS FOR LOTS 3 & 4 REMOVE ABANDONMENT OF EXISTING VAD TO LOT 11 ADD PROPOSED DWELLING ON LOT 11 & INDICATE ASSOCIATED VAD Added Leaders to "PLAN"		

WATER & SEWER MAIN EXTENSIONS PLAN
 600' SCALE MAP NO. 46 BLOCK NO. 11
 F.C.C. WORK ORDER NO. 10014
 FILE NAME: WATER & SEWER MAIN EXTENSION

CHERRYTREE VIEW
 BUILDABLE LOTS 1-11 &
 OPEN SPACE LOTS 12 & 13
 WATER & SEWER MAIN EXTENSIONS &
 LOW PRESSURE SEWER MAIN EXTENSIONS
 CONTRACT NO. 24-4687-D
 FIRST ELECTION DISTRICT
 HOWARD COUNTY, MARYLAND

SCALE AS SHOWN
 SHEET 2 OF 8



AS-BUILT REVISED AS OF 3/1/17,
AFTER CONVERSION TO GRAVITY SYSTEM.

NOTE: A CLEAR LINE OF VISION SHALL BE MAINTAINED BETWEEN THE CONTROL PANEL & THE GRINDER PUMP CHAMBER

NOTE: SEE SHEET 2 FOR GRAVITY SEWER SYSTEM

C.T.S.: DENOTES CONTINUITY TEST STATION

PLAN
SCALE: 1" = 50'

DEPARTMENT OF PUBLIC WORKS
HOWARD COUNTY, MARYLAND

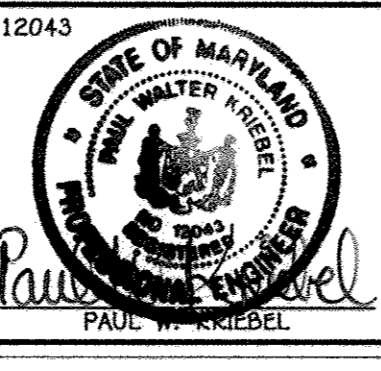
Steve C. Gorman
6/3/11
CHIEF, BUREAU OF UTILITIES

DEPARTMENT OF PLANNING AND ZONING
HOWARD COUNTY, MARYLAND

William J. ...
6/30/11
CHIEF, DEVELOPMENT ENGINEERING DIVISION

I HEREBY CERTIFY THAT THESE DOCUMENTS WERE PREPARED OR APPROVED BY ME, AND THAT I AM A DULY LICENSED PROFESSIONAL ENGINEER UNDER THE LAWS OF THE STATE OF MARYLAND.
LICENSE NO. 12043 EXPIRATION DATE 5/18/12

FISHER, COLLINS & CARTER, INC.
CIVIL ENGINEERING CONSULTANTS & LAND SURVEYORS
CONTINENTAL SQUARE OFFICE PARK - 10222 BALTIMORE NATIONAL PIKE
ELLSWORTH CITY, MARYLAND 21042
(410) 461-2295



DESIGNED BY:	B.C.R.
DRAWN BY:	B.C.R.
CHECKED BY:	P.W.K.
DATE:	MAY, 2011
BY NO.	
REVISION	

ADD PROPOSED DWELLING ON LOT 11 & INDICATE ASSOCIATED 1 1/2" MHD

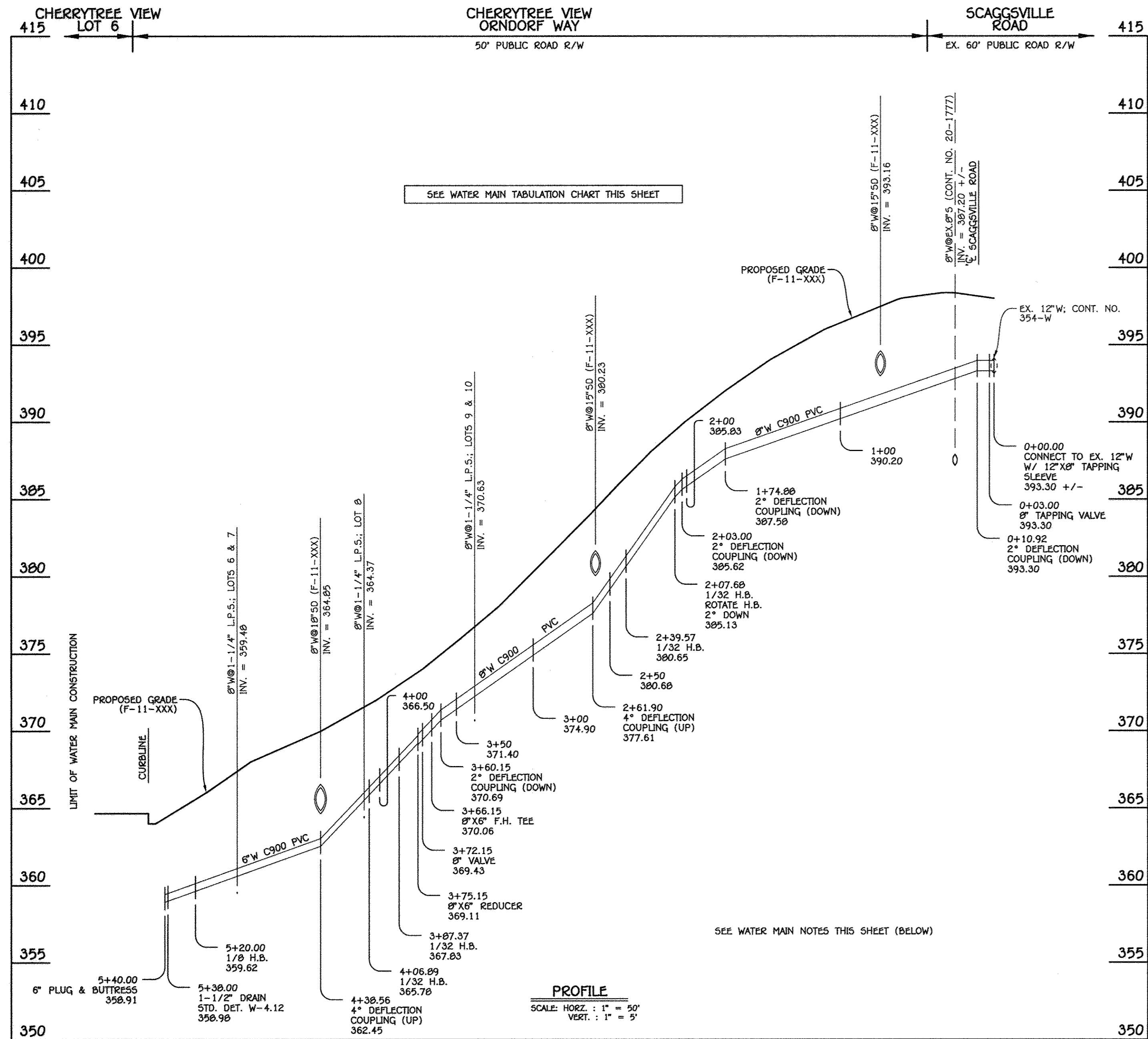
LOW PRESSURE SEWER MAIN
EXTENSION PLAN

600' SCALE MAP NO. 46 BLOCK NO. 11
F.C.C. WORK ORDER NO. 10014
FILE NAME: WATER & SEWER MAIN EXTENSION

CHERRYTREE VIEW
BUILDABLE LOTS 1-11 &
OPEN SPACE LOTS 12 & 13
WATER & SEWER MAIN EXTENSIONS &
LOW PRESSURE SEWER MAIN EXTENSIONS
CONTRACT NO. 24-4687-D
FIRST ELECTION DISTRICT
HOWARD COUNTY, MARYLAND

SCALE
AS
SHOWN

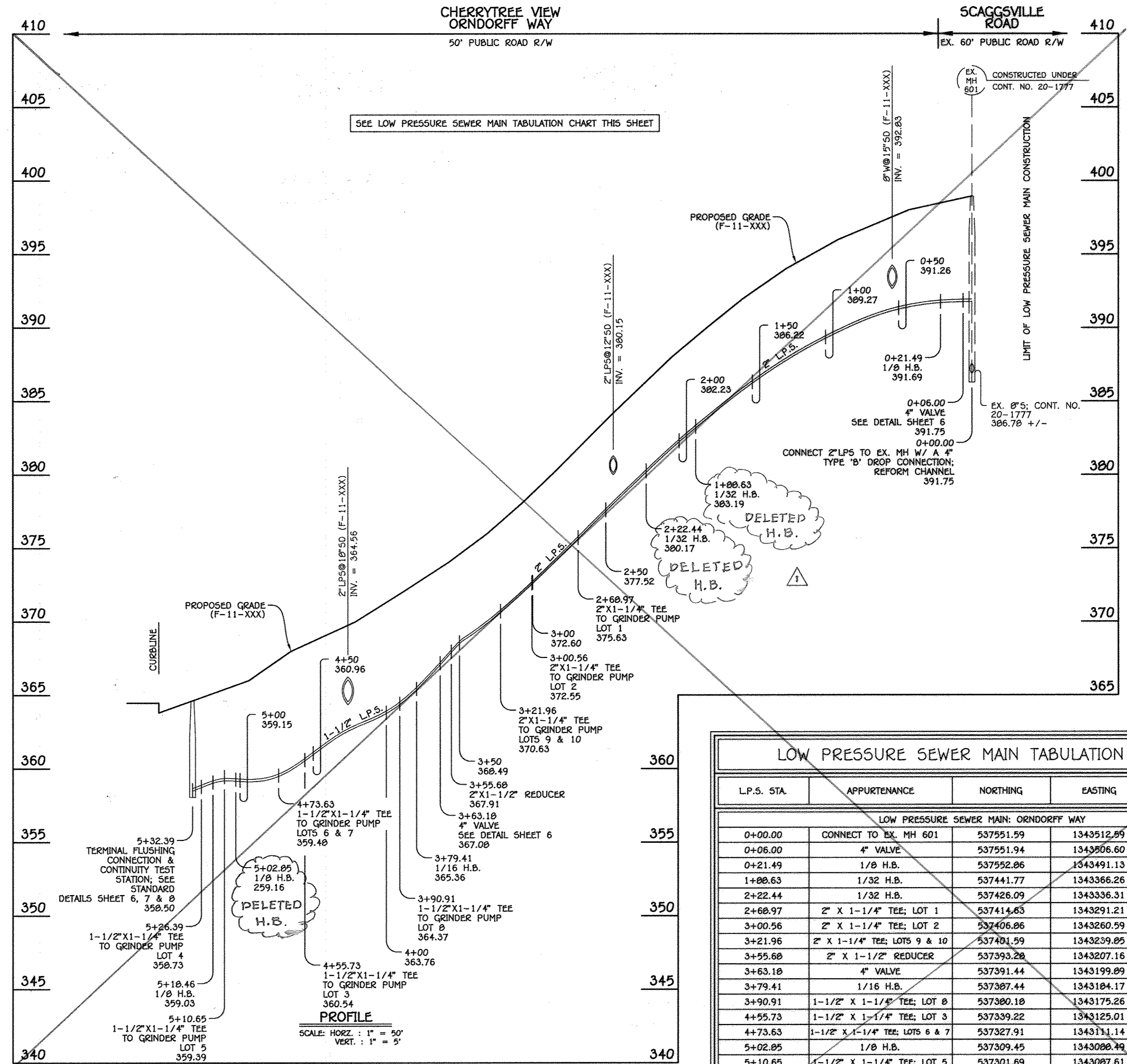
SHEET
3 of 8



8" & 6" WATER MAIN: ORNDORFF WAY

WATER MAIN TABULATION CHART			
W.M. STA.	APPURTENANCE	NORTHING	EASTING
8" & 6" WATER MAIN: ORNDORFF WAY			
0+00.00	12" X 8" TAPPING SLEEVE	537586.44	1343516.84
0+03.00	8" TAPPING VALVE	537584.45	1343514.60
2+07.66	1/32 H.B.	537440.40	1343361.60
2+39.57	1/32 H.B.	537433.61	1343333.43
3+66.15	8" X 6" TEE	537402.45	1343210.74
3+72.15	8" VALVE	537400.97	1343204.92
3+75.15	8" X 6" REDUCER	537400.23	1343202.01
3+87.37	1/32 H.B.	537397.22	1343190.18
4+06.89	1/32 H.B.	537388.44	1343172.74
5+20.00	1/8 H.B.	537316.98	1343085.07
5+38.00	1-1/2" DRAIN	537318.77	1343067.15
5+40.00	6" PLUG & BUTTRESS	537318.97	1343065.16

- WATER MAIN NOTES:
- ALL WATER MAINS SHALL BE AWWA C900 PVC PIPE.
 - ALL PIPE BEDDING, TRACER WIRE, LOCATING TAPE AND OTHER APPURTENANCES SHALL BE IN ACCORDANCE WITH THE HOWARD COUNTY DESIGN MANUAL, VOLUME II - WATER AND SEWER STANDARDS FOR AWWA C900 PVC WATER PIPE INSTALLATION.
 - DEFLECTION COUPLINGS SHALL BE CERTAIN-TEED PVC HIGH DEFLECTION COUPLINGS.
 - ALL WATER HOUSE CONNECTIONS AND TAPS SHALL BE PERFORMED USING A SADDLE.



LOW PRESSURE SEWER MAIN: ORNDORFF WAY

AS-BUILT REVISED AS OF 3/1/17,
AFTER CONVERSION TO GRAVITY SYSTEM.

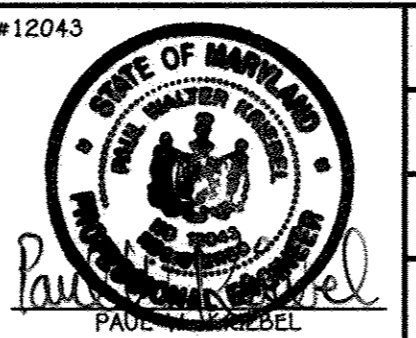
LOW PRESSURE SEWER MAIN TABULATION CHART				
L.P.S. STA.	APPURTENANCE	NORTHING	EASTING	RIM ELEVATION
LOW PRESSURE SEWER MAIN: ORNDORFF WAY				
0+00.00	CONNECT TO EX. MH 601	537551.59	1343512.89	
0+06.00	4" VALVE	537551.94	1343506.60	
0+21.49	1/8 H.B.	537552.86	1343491.13	
1+08.63	1/32 H.B.	537441.77	1343366.26	
2+22.44	1/32 H.B.	537426.09	1343336.31	
2+68.97	2" X 1-1/4" TEE; LOT 1	537414.63	1343291.21	
3+00.56	2" X 1-1/4" TEE; LOT 2	537406.86	1343260.59	
3+21.96	2" X 1-1/4" TEE; LOTS 9 & 10	537401.99	1343239.85	
3+55.66	2" X 1-1/2" REDUCER	537393.20	1343207.16	
3+63.18	4" VALVE	537391.44	1343199.89	
3+79.41	1/16 H.B.	537387.44	1343184.17	
3+90.91	1-1/2" X 1-1/4" TEE; LOT 8	537380.18	1343175.26	
4+55.73	1-1/2" X 1-1/4" TEE; LOT 3	537339.22	1343125.01	
4+73.63	1-1/2" X 1-1/4" TEE; LOTS 6 & 7	537327.91	1343111.14	
5+02.85	1/8 H.B.	537309.45	1343088.49	
5+10.65	1-1/2" X 1-1/4" TEE; LOT 5	537301.69	1343087.61	
5+18.46	1/8 H.B.	537293.94	1343086.74	
5+26.89	1-1/2" X 1-1/4" TEE; LOT 4	537287.81	1343091.77	
5+32.39	TERMINAL FLUSHING CONN. & CONTINUITY TEST STATION	537283.18	1343095.58	364.72

DEPARTMENT OF PUBLIC WORKS
HOWARD COUNTY, MARYLAND

DEPARTMENT OF PLANNING AND ZONING
HOWARD COUNTY, MARYLAND

I HEREBY CERTIFY THAT THESE DOCUMENTS WERE PREPARED OR APPROVED BY ME, AND THAT I AM A DULY LICENSED PROFESSIONAL ENGINEER UNDER THE LAWS OF THE STATE OF MARYLAND.
LICENSE NO. 16243 EXPIRATION DATE IS 7/16/12.

FISHER, COLLINS & CARTER, INC.
CIVIL ENGINEERING CONSULTANTS & LAND SURVEYORS
CONTINENTAL SQUARE OFFICE PARK - 10270 BALDORRE NATIONAL PIKE
DUBLITT CITY, MARYLAND 21042
(410) 461-2895



DESIGNED BY: B.C.R.
DRAWN BY: B.C.R.
CHECKED BY: P.W.K.
DATE: MAY, 2011

REVISION

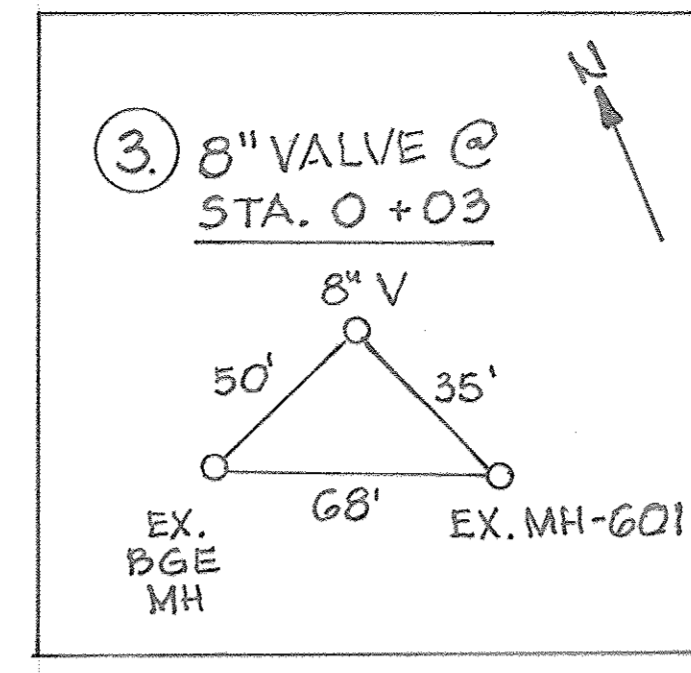
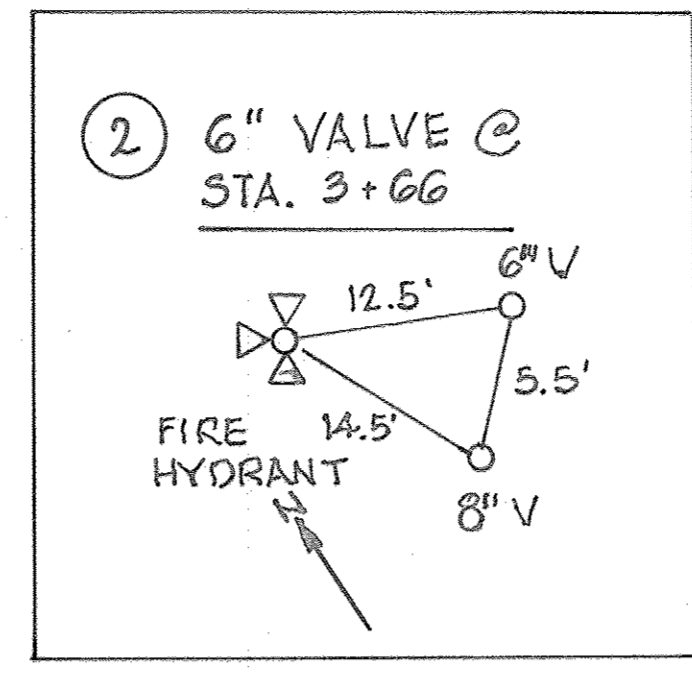
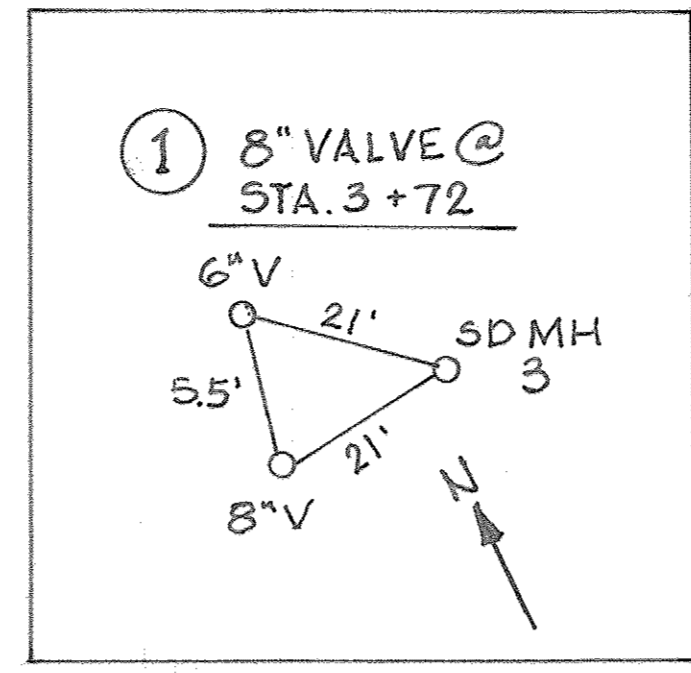
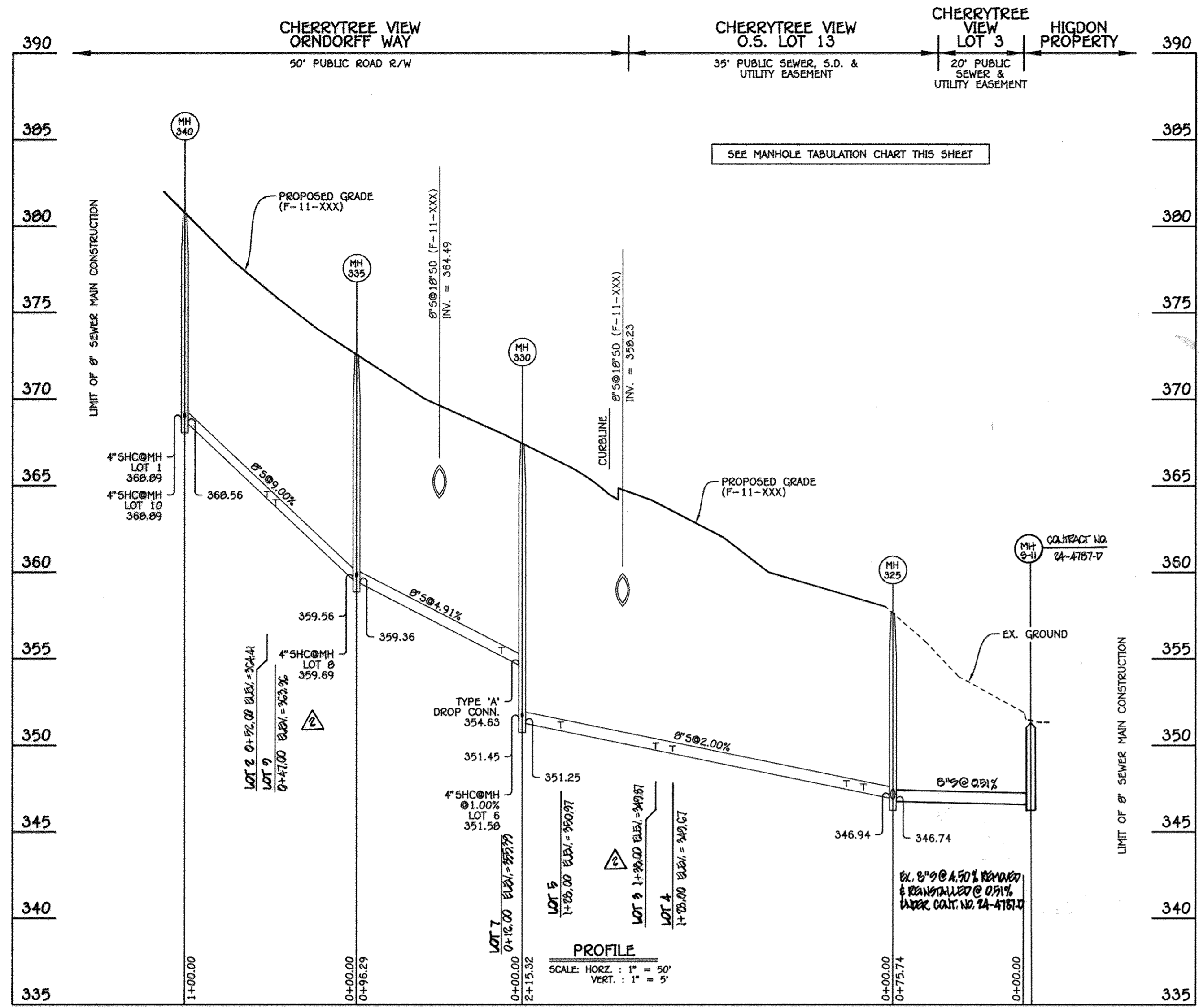
WATER & LOW PRESSURE SEWER MAIN EXTENSIONS & CHARTS

60' SCALE MAP NO. 46 BLOCK NO. 11
F.C.C. WORK ORDER NO. 10014

FILE NAME: WATER & SEWER MAIN EXTENSION

CHERRYTREE VIEW BUILDABLE LOTS 1-11 & OPEN SPACE LOTS 12 & 13
WATER & SEWER MAIN EXTENSIONS & LOW PRESSURE SEWER MAIN EXTENSIONS
CONTRACT NO. 24-4687-D
FIRST ELECTION DISTRICT
HOWARD COUNTY, MARYLAND

SCALE AS SHOWN
SHEET 4 of 8



AS BUILT CHART WATER HOUSE CONNECTION (WHC)

LOT #	Measurement #1	Measurement #2	Measurement #3
1	30' To MH 4	25.5' To SMH 340	18.5' To Lot 1 SHC
2	11.5' To MH 3	40.5' To SMH 330	16' To Lot 2 SHC
3	21' To MH M2	40' To SMH 330	16' To Lot 2 SHC
4	35.5' To MH M1	45.5' To SMH 330	76' To Lot 3 WHC
5	26' To Blower/Drain	71.5' To SMH 330	76' To Lot 4 WHC
6	55' To SMH 330	77.5' To Lot 3 WHC	44' To Lot 5 WHC
7	42.5' To MH M2	64.5' To SMH 330	34' To Lot 6 SHC
8	31' To SMH 330	11.5' To C.I. 330+76.8	17' To Lot 8 SHC
9	50.5' To Lot 2 WHC	42' To Lot 10 WHC	6' To Lot 9 SHC
10	33.5' To SMH 340	60.5' To Lot 1 WHC	15.5' To Lot 10 SHC
11	112' To INLET I-9	92' To INLET I-7	84.5' To INLET I-14

AS BUILT CHART SEWER HOUSE CONNECTION (SHC)

LOT #	Measurement #1	Measurement #2	Measurement #3
1	21.5' To SMH 340	58' To Lot 6 WHC	16.5' To Lot 1 WHC
2	16' To Lot 2 WHC	24' To MH M3	55' To Lot 2 WHC
3	26.5' To SMH 325	26' To Lot 4 SHC	
4	26' To SMH 325	156' To Lot 3 SHC	
5	21.5' To Lot 4 C.I. 330+76.8	81' To MH 1	12' To Lot 5 WHC
6	53.5' To SMH 330	32.5' To Lot 7 SHC	10.5' To Lot 6 WHC
7	24.5' To SMH 330	57' To MH M2	34' To Lot 6 WHC
8	13' To SMH 330	40.5' To Lot 5 WHC	17' To Lot 8 WHC
9	45.5' To MH M3	61.5' To SMH 340	6' To Lot 9 WHC
10	31' To SMH 340	35' To Lot 9 SHC	15.5' To Lot 10 WHC

GRINDER PUMPS

LOT #	Measurement #1	Measurement #2	Measurement #3
1	4' To Lot 1 4" V	10' To Lot 1 WHC	9.5' To Lot 1 SHC
2	4' To Lot 2 4" V	24' To Lot 1 SHC	26' To Lot 2 SHC
3	3' To Lot 3 4" V	44' To Lot 3 WHC	64' To Lot 3 WHC
4	11' To Lot 4 WHC	32' To Lot 4 4" V	64' To Lot 4 WHC
5	32' To DS-I2	3' To Lot 5 4" V	15.5' To Lot 5 SHC
6 & 7	4' To Lot 6/7 4" V	24.5' To Lot 6 SHC	47.5' To Lot 7 WHC
8	3' To Lot 8 4" V	24.5' To DS-I6	9.5' To Lot 8 SHC
9 & 10	3' To Lot 9/10 4" V	9.5' To Lot 9 SHC	29' To Lot 10 WHC

CONTINUITY TEST STATIONS & L.P.S. C.T.S. 4" VALVES

Water - C.T.S.	Measurement #1	Measurement #2	Measurement #3
Water - C.T.S.	34' To M3	26.5' To Lot 6 WHC	44.5' To Lot 1 WHC
Water - C.T.S.	14.5' To Lot 3 WHC	18' To Lot 3 WHC	15' To Lot 3 WHC
Water - C.T.S.	62' To Lot 4 WHC	52' To Lot 4 WHC	50' To Lot 5 SHC
1 1/2" Drain	26.5' To Lot 5 SHC	58' To SMH 330	26' To Lot 5 WHC

8" SEWER MAIN: CHERRYTREE VIEW & ORNDORFF WAY

MANHOLE TABULATION CHART

NO.	NORTHING	EASTING	RIM ELEVATION
8" PLUG	537084.31	1343221.32	---
325	537113.38	1343151.38	357.65
330	537324.78	1343110.46	367.40
335	537385.61	1343185.09	372.56
340	537410.23	1343282.01	360.77

NOTE: SET MH RIMS FLUSH W/EXISTING GROUND OR PROPOSED GRADE, AS APPLICABLE.

SHC INVERT @ R/W

STATION	LOT	ELEVATION
MH 325 TO MH 330		
1+38 LT.	3	350.17
1+25 LT.	4	349.87
1+93 LT.	5 (FF ONLY @ 1.00%)	351.67
⑥ MH 330 LT.	6 (SHC @ 1.00%)	352.09
MH 330 TO MH 335		
0+12 LT.	7	356.21
⑥ MH 335 LT.	8	360.19
MH 335 TO MH 340		
0+47 LT.	9 (SHC @ 1.00%)	364.26
0+52 RT.	2 (SHC @ 1.00%)	364.61
⑥ MH 340 LT.	10 (SHC @ 1.00%)	369.49
⑥ MH 340 RT.	1 (SHC @ 1.00%)	369.29

AS-BUILT REVISED AS OF 3/1/17,
AFTER CONVERSION TO GRAVITY SYSTEM.

CHERRYTREE VIEW 24-4687-10 SEWER AS BUILTS

LOT #	Measurement #1	Measurement #2	Measurement #3
1	22' To MH-340	18' To Lot 1 WHC	32' To MH-4
2	54' To MH-340	16' To Lot 2 WHC	25' To MH-3
3	81' To MH-330	70' To Lot 3 WHC	24' To MH-1
4	87' To MH-330	33' To Lot 4 WHC	14' To MH-1
5	75' To MH-330	11' To Lot 5 WHC	32' To MH-1
6	54' To MH-330	10' To Lot 6 WHC	55' To I-12
7	41' To MH-330	32' To Lot 7 WHC	60' To MH-2
8	25' To MH-335	17' To Lot 8 WHC	30' To FHT
9	57' To MH-335	38' To Lot 10 WHC	20' To FHT
10	61' To MH-340	34' To Lot 10 WHC	51' To MH-2

DEPARTMENT OF PUBLIC WORKS HOWARD COUNTY, MARYLAND Chief, Bureau of Utilities	DEPARTMENT OF PLANNING AND ZONING HOWARD COUNTY, MARYLAND Chief, Development Engineering Division	I HEREBY CERTIFY THAT THESE DOCUMENTS WERE PREPARED OR APPROVED BY ME, AND THAT I AM A DULY LICENSED PROFESSIONAL ENGINEER UNDER THE LAWS OF THE STATE OF MARYLAND. LICENSE NO. 12243 EXPIRATION DATE IS 7/16/12. FISHER, COLLINS & CARTER, INC. CIVIL ENGINEERING CONSULTANTS & LAND SURVEYORS CENTENNIAL SQUARE OFFICE PARK - 10222 BALDWIN NATIONAL PIKE ELICOTT CITY, MARYLAND 21042 (410) 461-2995	#12043 DESIGNED BY: B.C.R. DRAWN BY: B.C.R. CHECKED BY: P.W.K. DATE: MAY, 2011	SHOW NEW SHC'S FOR LOT 3 & 4 PEOPLE & TABULATION CHART Added Survey Controls & As-Built Tables DATE: 6-15-12	SEWER MAIN EXTENSION PROFILE & CHARTS 600' SCALE MAP NO. 46 BLOCK NO. 11 F.C.C. WORK ORDER NO. 10014 FILE NAME: WATER & SEWER MAIN EXTENSION	CONTRACT NO. 24-4687-D CHERRYTREE VIEW BUILDABLE LOTS 1-11 & OPEN SPACE LOTS 12 & 13 WATER & SEWER MAIN EXTENSIONS & LOW PRESSURE SEWER MAIN EXTENSIONS HOWARD COUNTY, MARYLAND	SCALE AS SHOWN SHEET 5 OF 8
---	---	--	--	--	--	---	--------------------------------

NOTES:
 1. 6" DIA. PIPING ON DIPS
 2. DO NOT OVERSEAL Joints

Howard County, Maryland
 Department of Public Works
 Terminal Flushing
 Connection
 County Owned Grinder Pump
 Detail
 E-1.03

ENVIRONMENT ONE MODEL #	STATION VOLUME	CONCRETE VOLUME	BALLAST WEIGHT	PRE-CAST DIA. AT 33-3/8" IN HEIGHT
2010-58	17.6 FT ³	9.8 FT ³ (.36 CY)	1500 LBS (1473 LBS)	ø 36 IN
2010-74	22.7 FT ³	13.2 FT ³ (.48 CY)	2000 LBS (1985 LBS)	ø 36-3/8 IN
2010-93	28.6 FT ³	17.3 FT ³ (.63 CY)	2600 LBS (2590 LBS)	ø 42-3/8 IN
2010-124	38.6 FT ³	24.3 FT ³ (.90 CY)	3700 LBS (3642 LBS)	ø 47-3/8 IN
2010-129	40.0 FT ³	25.1 FT ³ (.93 CY)	3800 LBS (3750 LBS)	ø 48 IN
2010-158	49.5 FT ³	31.6 FT ³ (1.17 CY)	4800 LBS (4732 LBS)	ø 52-3/8 IN
2010-160	49.5 FT ³	31.6 FT ³ (1.18 CY)	4800 LBS (4773 LBS)	ø 52-3/8 IN

ENVIRONMENT ONE MODEL #	STATION VOLUME	CONCRETE VOLUME	BALLAST WEIGHT	PRE-CAST DIA. AT 28" IN HEIGHT
2014-85	47.5 FT ³	28.6 FT ³ (1.0 CY)	4300 LBS (4285 LBS)	ø 57-3/8 IN
2014-93	49.6 FT ³	29.9 FT ³ (1.1 CY)	4500 LBS (4494 LBS)	ø 58-3/8 IN
2014-129	61.0 FT ³	37.6 FT ³ (1.4 CY)	5700 LBS (5646 LBS)	ø 63-3/8 IN
2014-160	71.0 FT ³	44.4 FT ³ (1.6 CY)	5700 LBS (5664 LBS)	ø 67-3/8 IN

OR APPROVED EQUAL

Howard County, Maryland
 Department of Public Works
 Anti-Floatation Collar
 County Owned Grinder Pump
 Detail
 E-3.01

Howard County, Maryland
 Department of Public Works
 Backfill
 County Owned Grinder Pump
 Detail
 E-2.02

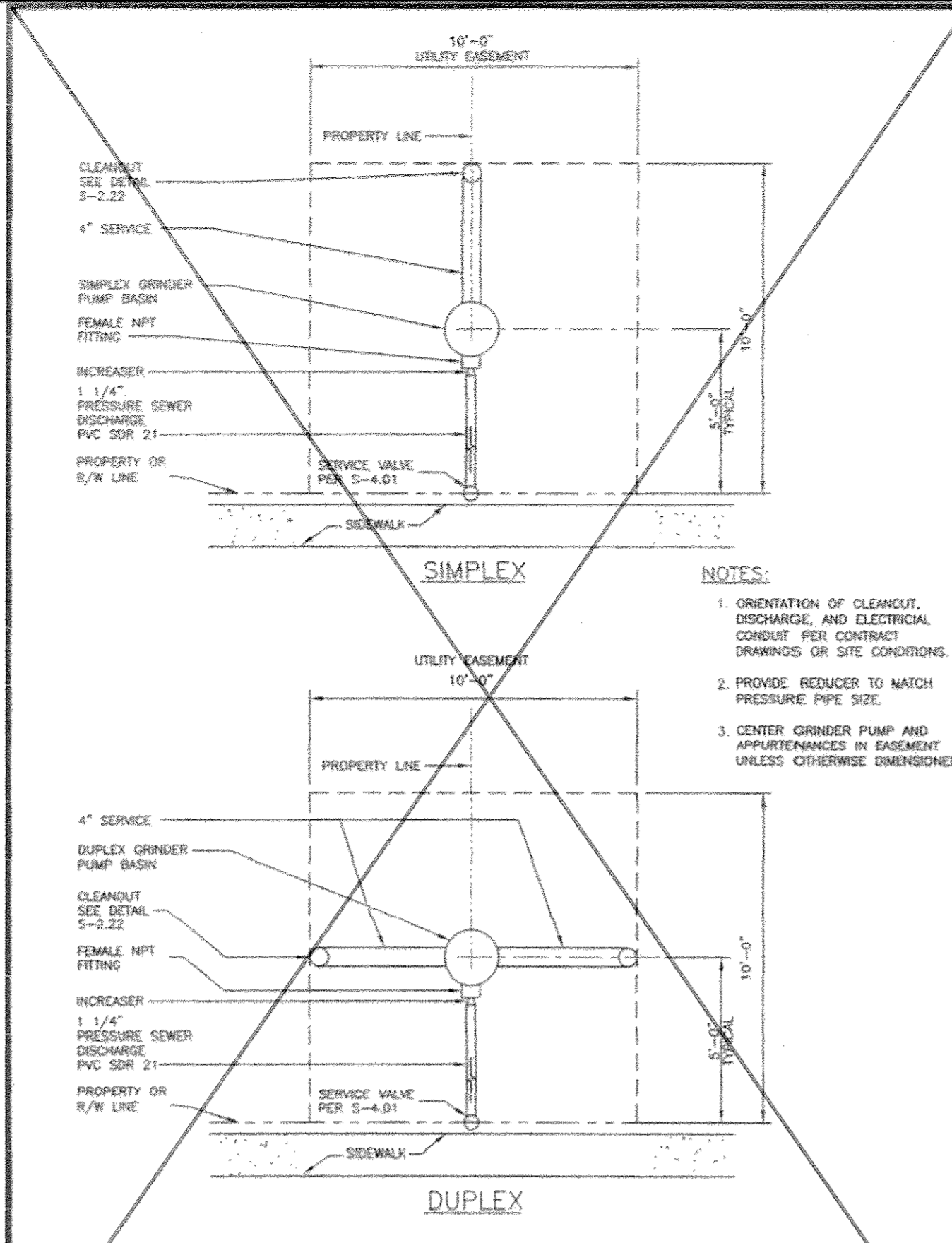
Howard County, Maryland
 Department of Public Works
 PRESSURE SEWER
 Tracer Wire, Conducting Rod &
 Vault
 Detail
 S-4.18

Howard County, Maryland
 Department of Public Works
 Pump Control
 and Alarm
 County Owned Grinder Pump
 Detail
 E-2.05

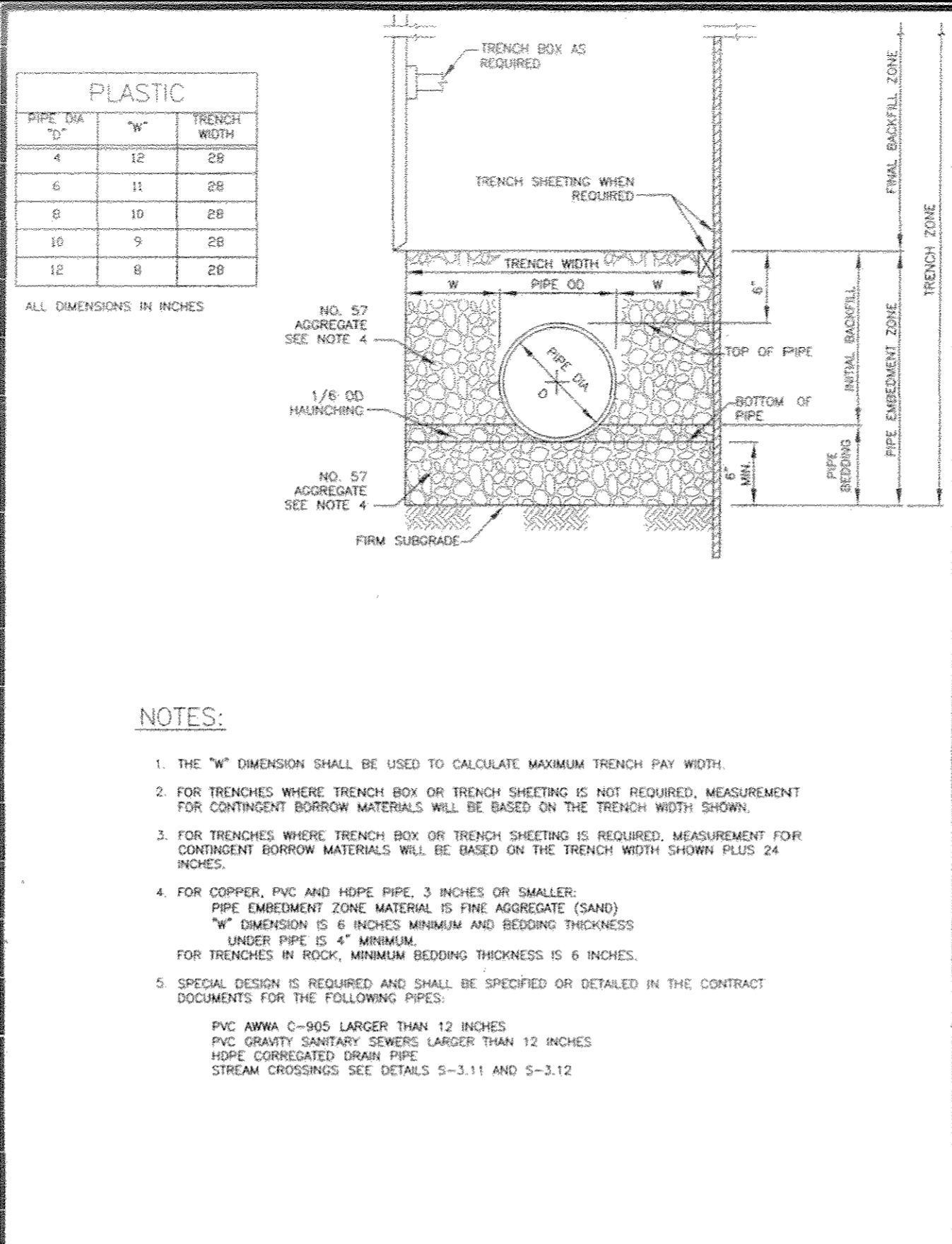
AS-BUILT REVISED AS OF 3/1/17,
 AFTER CONVERSION TO GRAVITY SYSTEM.

DETAIL: 4" L.P.S. VALVE
 NO SCALE

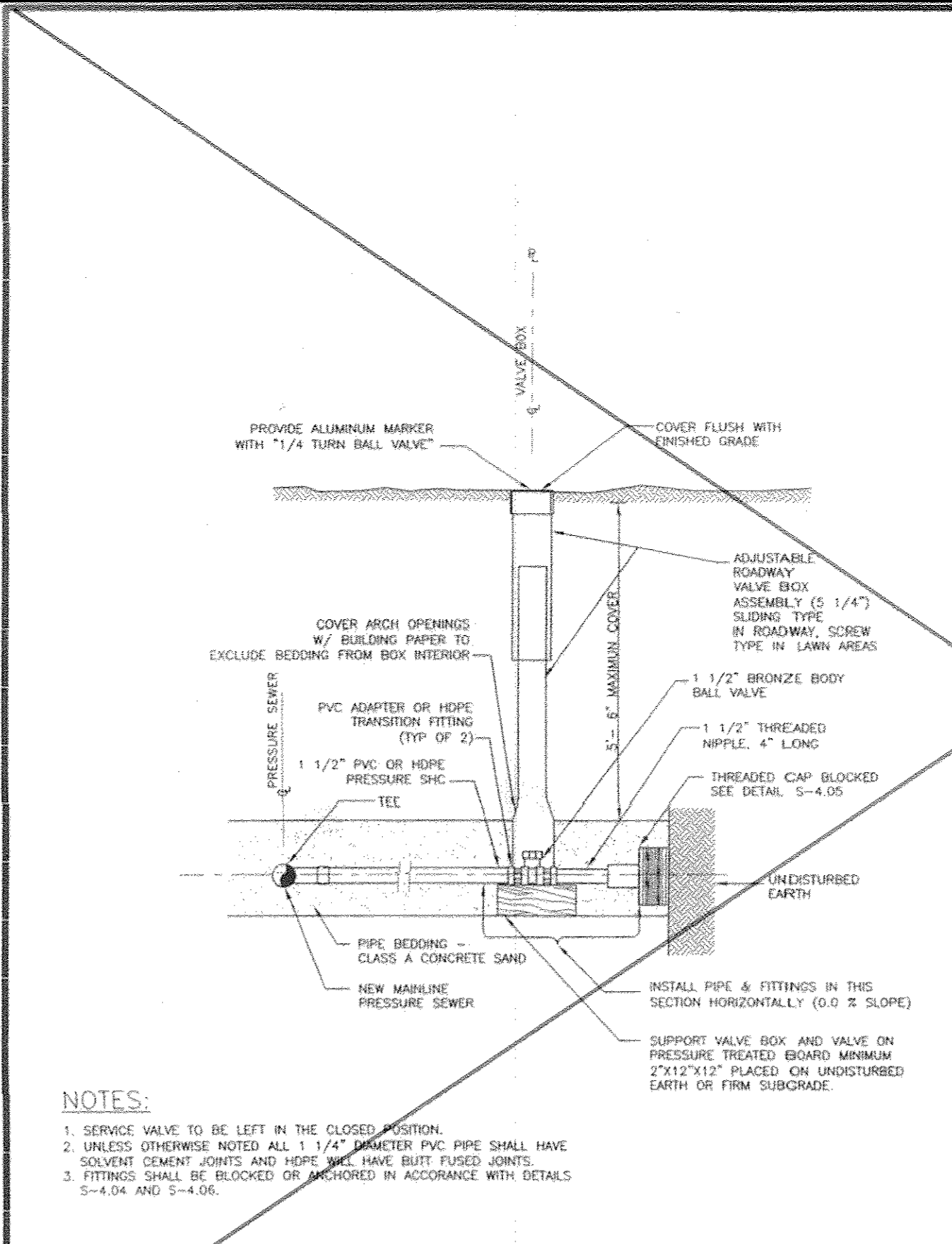
Howard County, Maryland
 Department of Public Works
 Entrance Wiring
 Diagram
 County Owned Grinder Pump
 Detail
 E-2.06



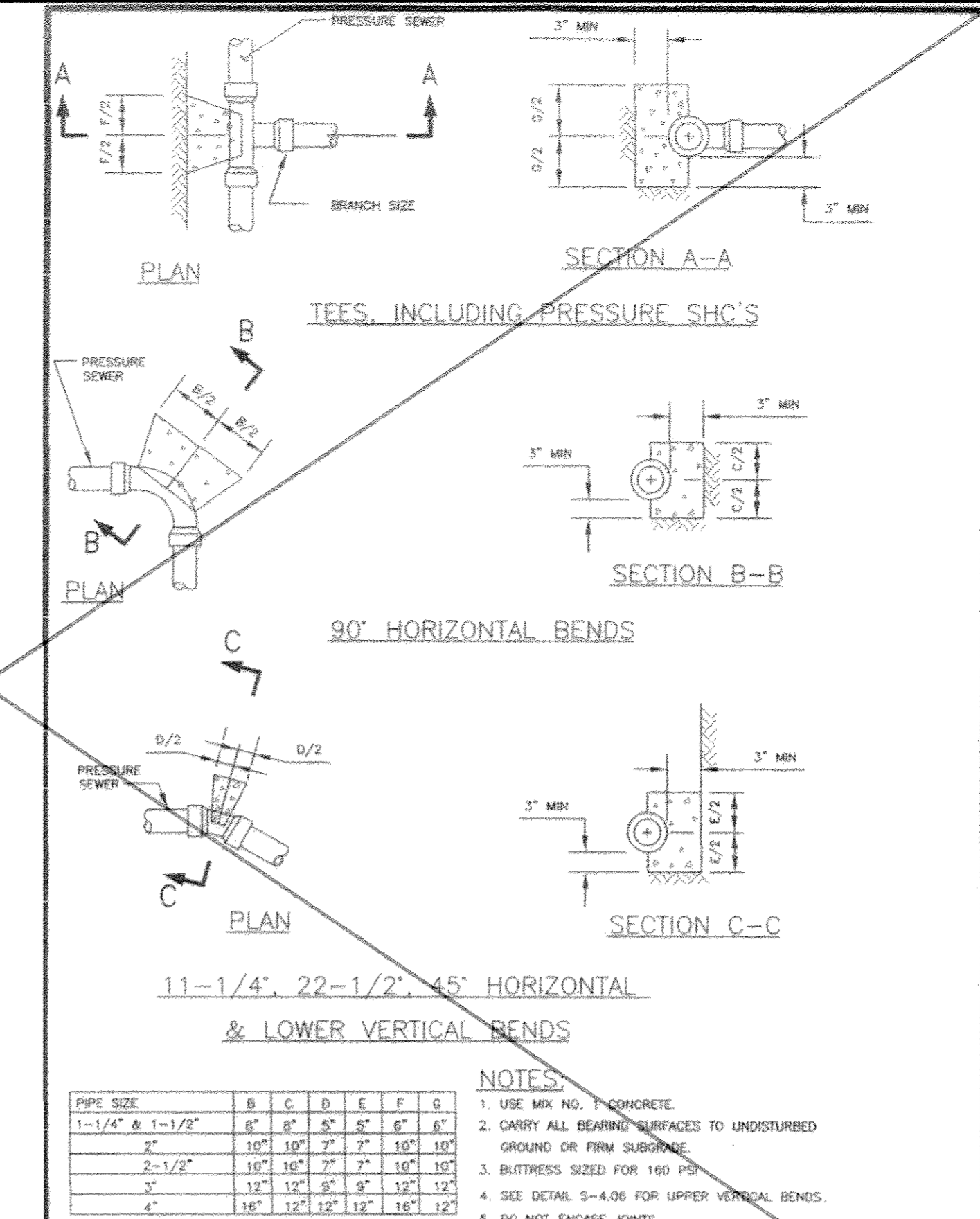
Howard County, Maryland
Department of Public Works
Layout
County Owned Grinder Pump
Detail
E-1.02



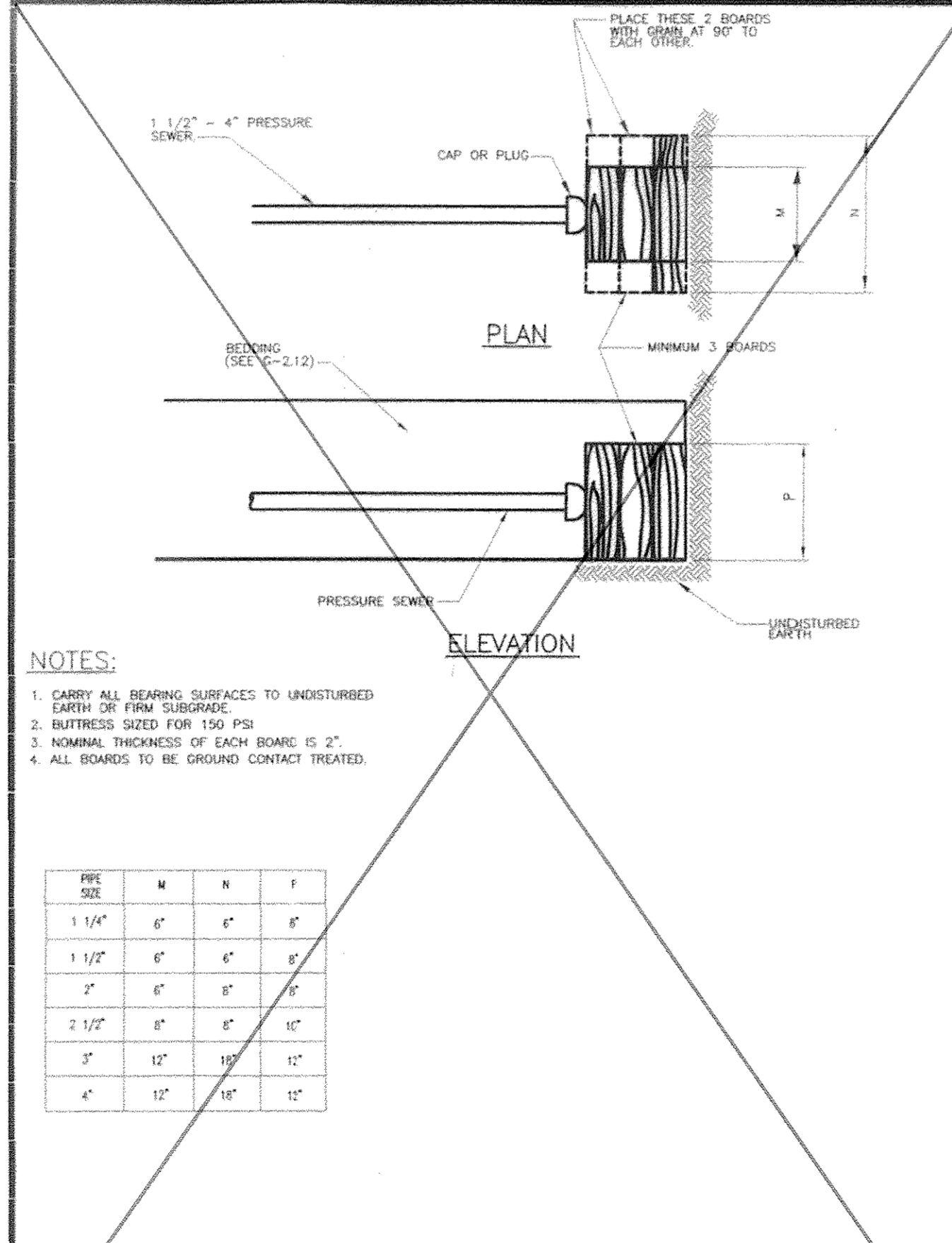
Howard County, Maryland
Department of Public Works
Pipe Trench
Plastic & Copper
Detail
G-2.12



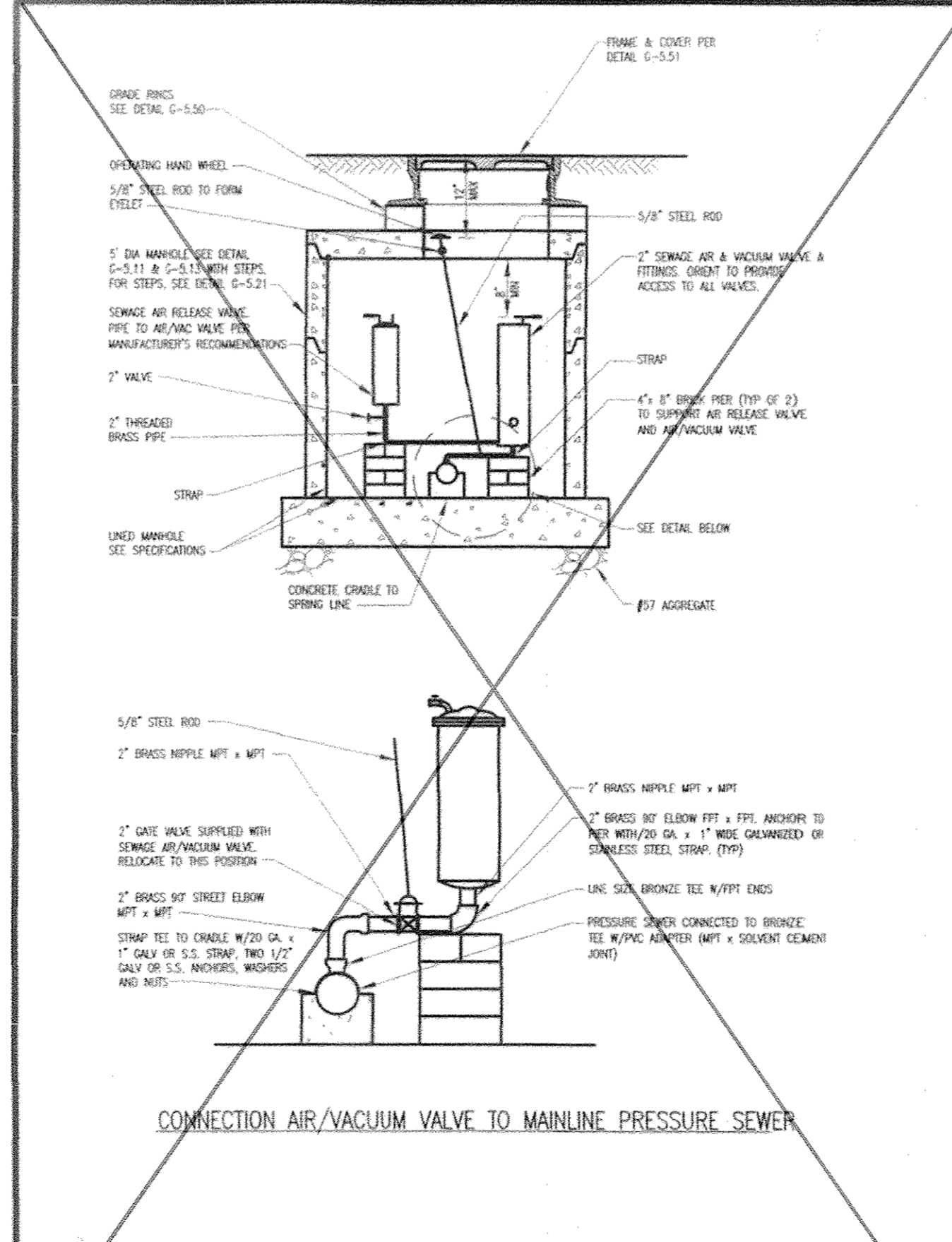
Howard County, Maryland
Department of Public Works
Pressure Sewer
House Connection
Service Valve Assembly
Detail
S-4.03



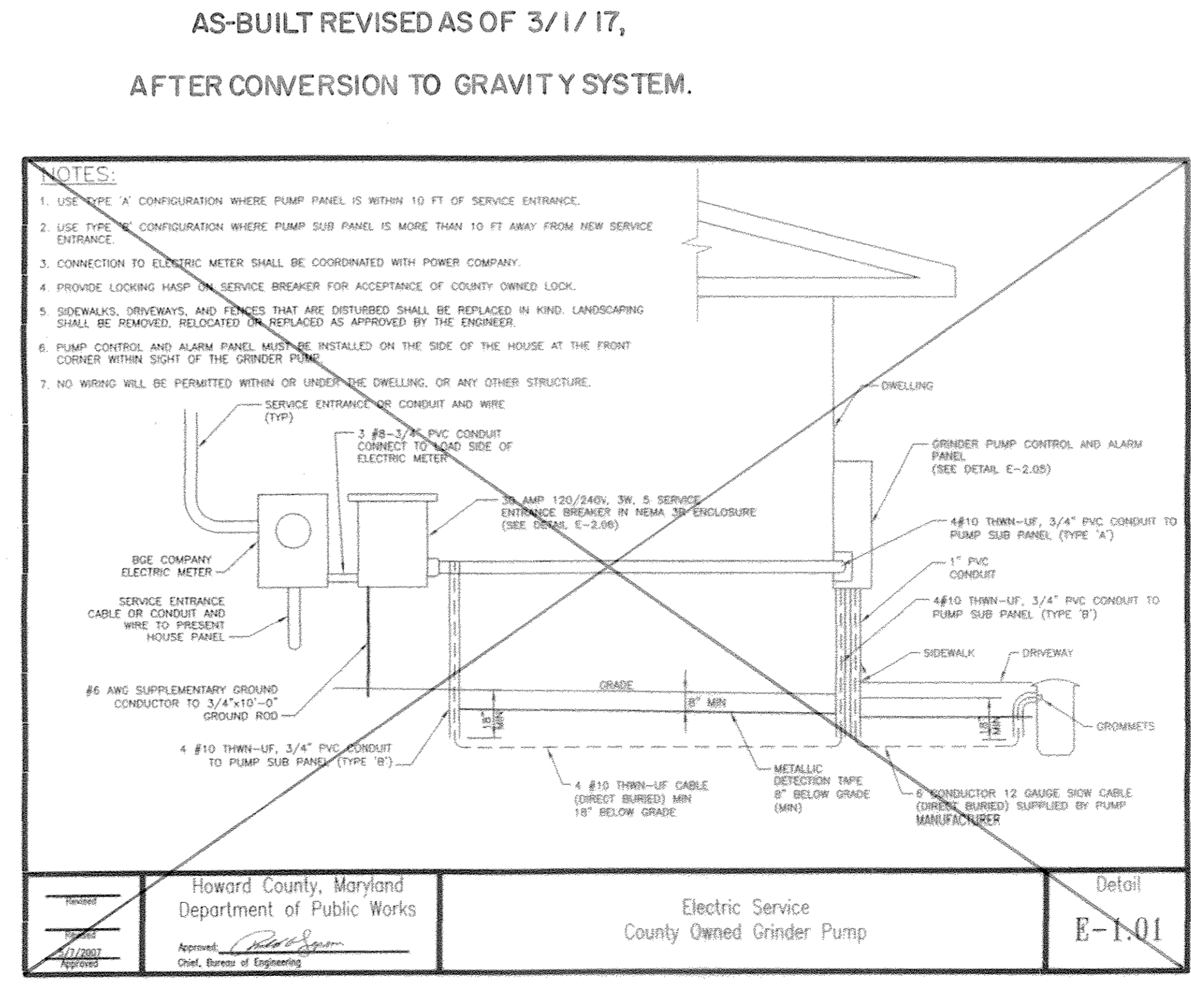
Howard County, Maryland
Department of Public Works
Pressure Sewer
Blocking
Detail
S-4.04



Howard County, Maryland
Department of Public Works
Pressure Sewer
House Connection
Cap & Plug Blocking
Detail
S-4.05



Howard County, Maryland
Department of Public Works
Pressure Sewer
Sewage/Air Vacuum &
Release Valve
Detail
S-4.07

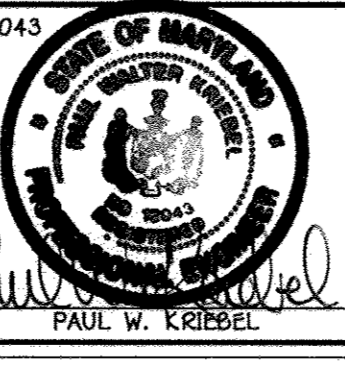


Howard County, Maryland
Department of Public Works
Electric Service
County Owned Grinder Pump
Detail
E-1.01

DEPARTMENT OF PUBLIC WORKS
HOWARD COUNTY, MARYLAND
S. W. C. [Signature]
CHIEF, BUREAU OF UTILITIES

DEPARTMENT OF PLANNING AND ZONING
HOWARD COUNTY, MARYLAND
[Signature]
CHIEF, DEVELOPMENT ENGINEERING DIVISION

I HEREBY CERTIFY THAT THESE DOCUMENTS WERE PREPARED OR APPROVED BY ME, AND THAT I AM A DULY LICENSED PROFESSIONAL ENGINEER UNDER THE LAWS OF THE STATE OF MARYLAND.
LICENSE NO. 12043 EXPIRATION DATE IS 7/16/12.
FISHER, COLLINS & CARTER, INC.
CIVIL ENGINEERING CONSULTANTS & LAND SURVEYORS
CONTINENTAL SQUARE OFFICE BUILDING - 10272 BALTIMORE NATIONAL PIKE
ELLSWORTH CITY, MARYLAND 21142
(410) 461-2995



DESIGNED BY: B.C.R.
DRAWN BY: B.C.R.
CHECKED BY: P.W.K.
DATE: MAY, 2011

LOW PRESSURE SEWER SYSTEM
DETAILS
600' SCALE MAP NO. 46 BLOCK NO. 11
F.C.C. WORK ORDER NO. 10014
FILE NAME: WATER & SEWER MAIN EXTENSION

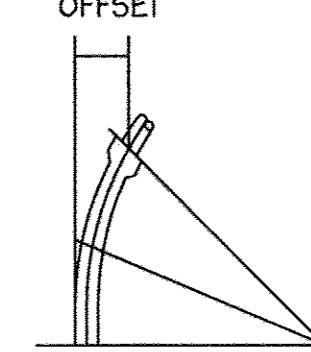
CHERRYTREE VIEW
BUILDABLE LOTS 1-11 &
OPEN SPACE LOTS 12 & 13
WATER & SEWER MAIN EXTENSIONS &
LOW PRESSURE SEWER MAIN EXTENSIONS
CONTRACT NO. 24-4607-D
FIRST ELECTION DISTRICT
HOWARD COUNTY, MARYLAND
SCALE AS SHOWN
SHEET 7 of 8

E:\2010\1004\Map\10011 Water & Sewer Base Plan.dwg, 5/19/2011, 3:51:50 PM

OFFSET PER 20' LENGTH

DIAMETER	OFFSET (IN. FT)
2"	3.33
4"	2.27
5"	1.77
6"	1.21
8"	.93
10"	.74
12"	.62

PERMISSIBLE OFFSET

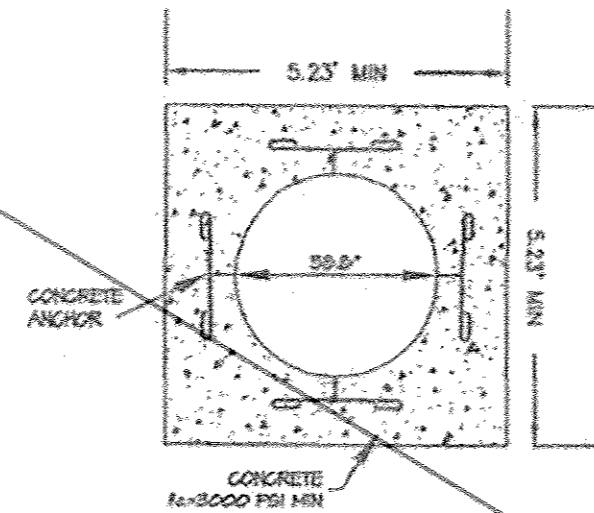
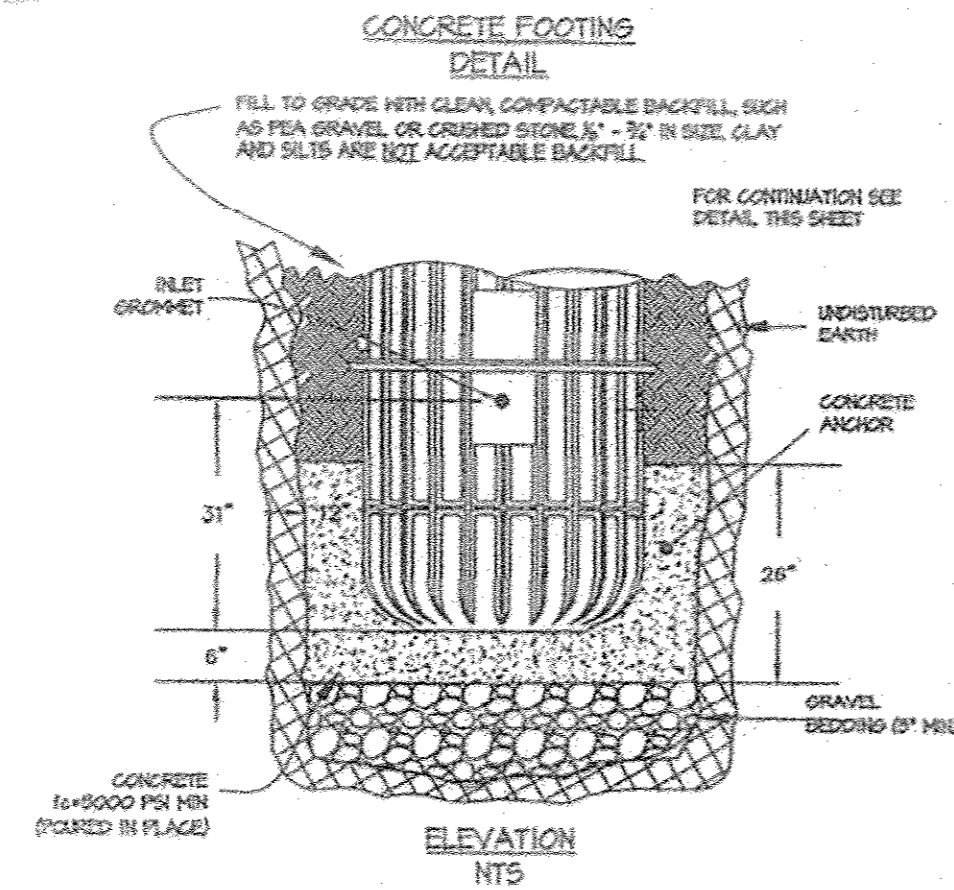


NOTE: THESE CURVATURES RESULT ONLY FROM THE BENDING OF THE PIPE LENGTHS. THERE IS VIRTUALLY NO DEFLECTION IN THE JOINT.

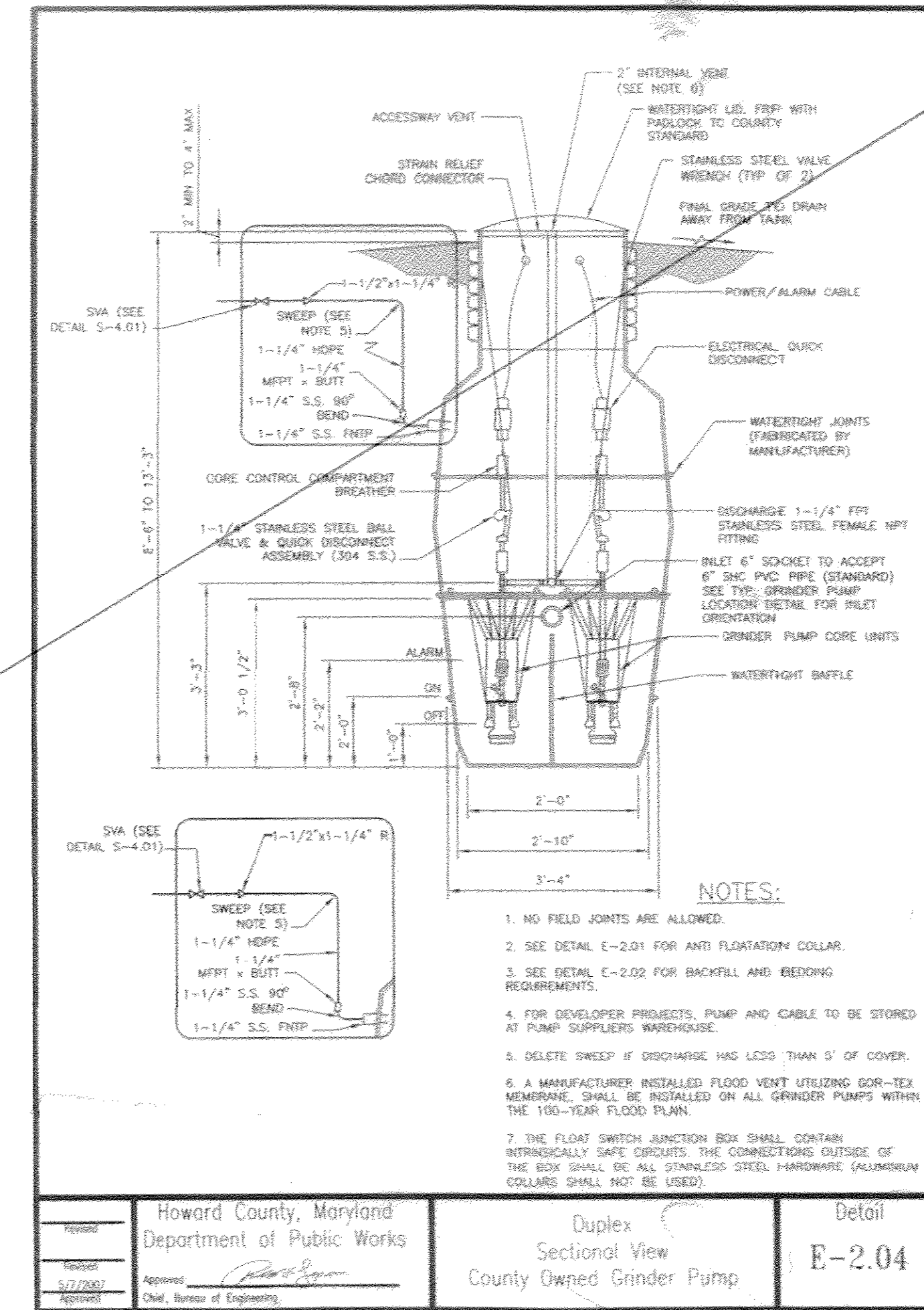
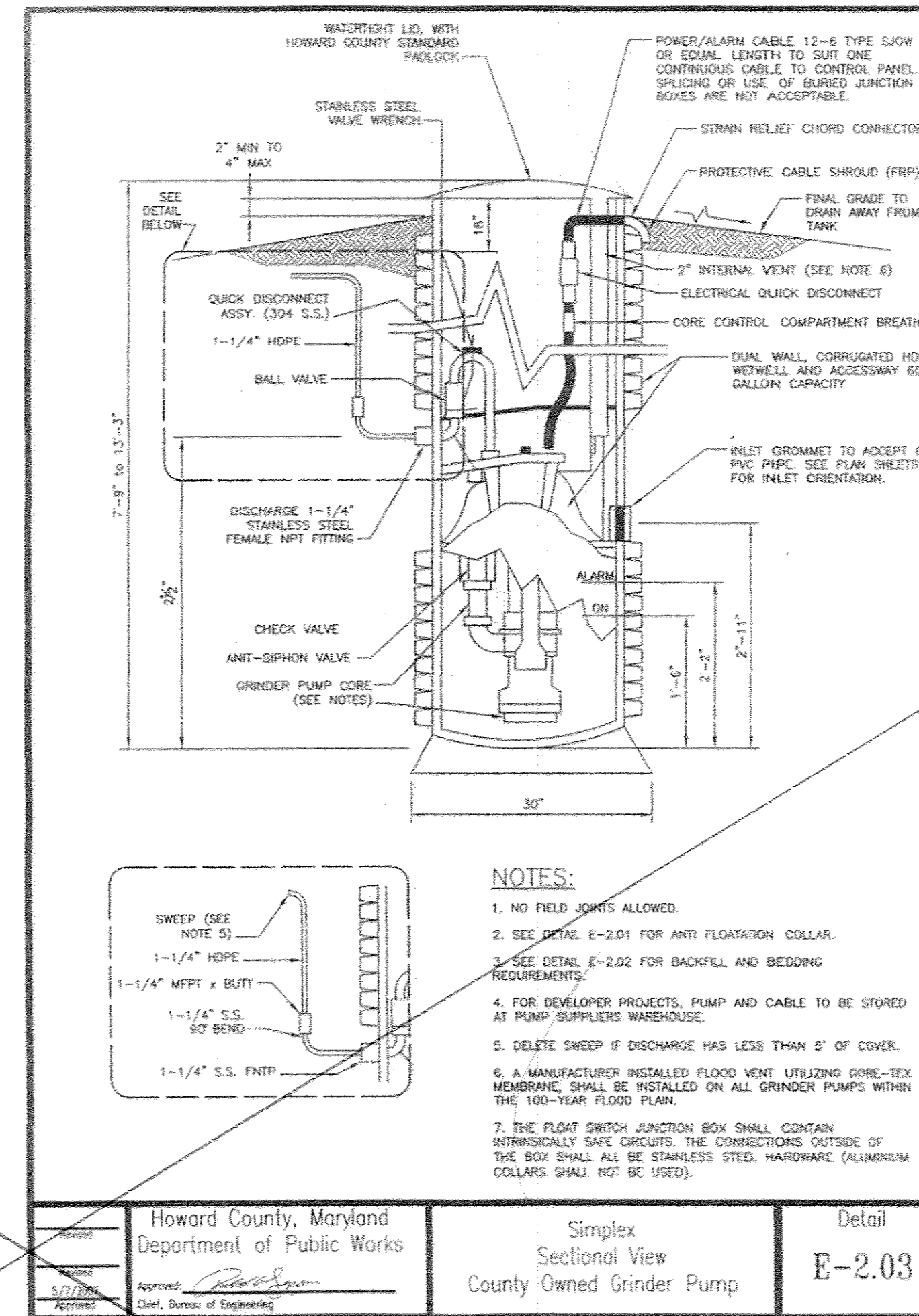
PIPE CURVE DATA

WAVERLY OVERLOOK LOW PRESSURE SEWER DESIGN WORKSHEET

PRESSURE ZONE	ZONE START	ZONE END	ZONE LENGTH	HIGH ZONE ELEVATION	PIPE DIA.	CORE NO.	LOTS SERVED	
NO.	(L.F.)	(E.L.)	(IN.)	NO.	A	B		
1	0+00.00	3+52.68	352.68	X	2"	1	1	
						2	2	
						3	9	10
						4	8	
						5	3	
2	3+52.68	5+32.39	179.71	X	1.5"	6	6	7
						7	5	
						8	4	
						9	4	



CONCRETE FOOTING DETAIL



NOTE: GRINDER PUMP CHAMBERS FOR SIMPLEX PUMPS SHALL BE A MINIMUM OF THIRTY-SIX (36) INCHES IN DIAMETER.

GRINDER PUMP / GRINDER PUMP CHAMBER

GRINDER PUMP CONTROL PANEL NOTES

1. THE GRINDER PUMP CONTROL PANEL SHALL BE LOCATED ON THE HOUSE AND A CLEAR LINE OF VISION SHALL BE MAINTAINED BETWEEN THE CONTROL PANEL & THE GRINDER PUMP CHAMBER.
2. THE SEALING BOX SHALL BE PLACED SIX (6) INCHES BELOW THE CONTROL PANEL ON THE HOUSE IN LINE WITH CONDUIT & SHALL BE SEALED WITH CHICLE WATER-TIGHT SEALANT TO CREATE A VAPOR LOCK.
3. THE GRINDER PUMP CONTROL PANEL SHALL BE DIRECT WIRING FROM B.G.&E.'S METER BOX.
4. THE GRINDER PUMP CONTROL PANEL SHALL HAVE A FUNCTIONAL HOA/PUSH TO RUN SWITCH.
5. THE CONTROLS SHALL HAVE AN OVER-CURRENT DEVICE AND A DISCONNECT LOCATED NEXT TO THE ELECTRIC METER; BETWEEN THE METER & THE GRINDER PUMP CONTROL PANEL.
6. ALL WIRE SHALL BE INSTALLED IN CONDUIT; DIRECT BURIED WIRING IS UNACCEPTABLE.
7. THE CONTROL PANEL SHALL BE SITUATED SUCH THAT THE BOTTOM OF THE PANEL IS A MINIMUM OF FORTY-EIGHT (48) INCHES ABOVE THE GROUND.

GRINDER PUMP & HOUSING NOTES

1. GRINDER PUMPS SHALL BE ENVIRONMENTAL-ONE 2000 SERIES, DELTA DIP20-21, VORTEX V-2000B OR MYERS CENTRIFUGAL GRINDER PUMPS.
2. THE CHAMBER HOUSING FOR THE GRINDER PUMP SHALL HAVE A MAXIMUM DEPTH OF 10 FEET.
3. THE DISCHARGE LINE AS IT EXITS THE GRINDER PUMP CHAMBER SHALL HAVE A MAXIMUM DEPTH OF 48".
4. GRINDER PUMP CHAMBERS SHALL BE STRAIGHT-WALLED. THERE IS NO REQUIREMENT TO PURCHASE THE GRINDER PUMPS AND THE GRINDER PUMP CHAMBERS FROM THE SAME SUPPLIER.
5. NEITHER DECK PLATES NOR RAIL SYSTEMS SHALL BE INSTALLED WITHIN THE GRINDER PUMP CHAMBERS.
6. WATER TIGHTNESS FOR ALL CORES SHALL BE ENSURED BY FILLING EACH CORE WITH WATER - IN PLACE & FOLLOWING BACKFILL. THE WATER LEVEL WITHIN THE CORE SHALL BE RECORDED, FOLLOWING A 24 HOUR PERIOD, THE OBSERVED WATER LEVEL MUST BE WITHIN 1/2 INCH OF THE PREVIOUSLY RECORDED LEVEL. SHOULD THE 24-HR WATER LEVEL FALL MORE THAN 1/2 INCH, THE CONTRACTOR SHALL SEAL ALL SEAMS, JOINTS, AND FITTINGS ACCORDING TO THE MANUFACTURER'S RECOMMENDATIONS.

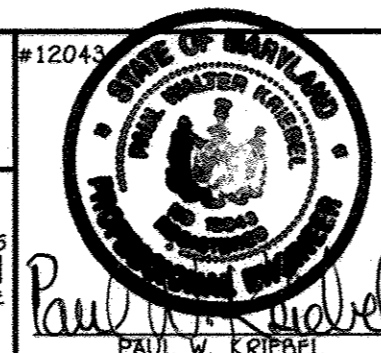
AS-BUILT REVISED AS OF 3/1/17,
AFTER CONVERSION TO GRAVITY SYSTEM.

DEPARTMENT OF PUBLIC WORKS
HOWARD COUNTY, MARYLAND

DEPARTMENT OF PLANNING AND ZONING
HOWARD COUNTY, MARYLAND

I HEREBY CERTIFY THAT THESE DOCUMENTS WERE PREPARED OR APPROVED BY ME, AND THAT I AM A DULY LICENSED PROFESSIONAL ENGINEER UNDER THE LAWS OF THE STATE OF MARYLAND.
LICENSE NO. 12043 EXPIRATION DATE IS 7/18/12.

FISHER, COLLINS & CARTER, INC.
CIVIL ENGINEERING CONSULTANTS & LAND SURVEYORS
CENTRAL SQUARE OFFICE PARK - 10725 BALTIMORE NATIONAL PIKE
BLOOMING GARDENS, MARYLAND 21042
(410) 461-2295



DESIGNED BY:	B.C.R.
DRAWN BY:	B.C.R.
CHECKED BY:	P.M.K.
DATE:	MAY, 2011
BY NO.	
REVISION	
DATE	

**LOW PRESSURE SEWER SYSTEM
DETAILS AND CHARTS**

600' SCALE MAP NO. 46	BLOCK NO. 11
F.C.C. WORK ORDER NO. 10014	
FILE NAME:	WATER & SEWER MAIN EXTENSION

**CHERRYTREE VIEW
BUILDABLE LOTS 1-11 &
OPEN SPACE LOTS 12 & 13**
WATER & SEWER MAIN EXTENSIONS &
LOW PRESSURE SEWER MAIN EXTENSIONS
CONTRACT NO. 24-4687-D
FIRST ELECTION DISTRICT
HOWARD COUNTY, MARYLAND

SCALE AS SHOWN
SHEET 8 OF 8

CONTRACT NO. 24-4687-D
CHERRYTREE VIEW
BUILDABLE LOTS 1-11 &
OPEN SPACE LOTS 12 & 13
WATER & SEWER MAIN EXTENSIONS &
LOW PRESSURE SEWER MAIN EXTENSIONS
HOWARD COUNTY, MARYLAND