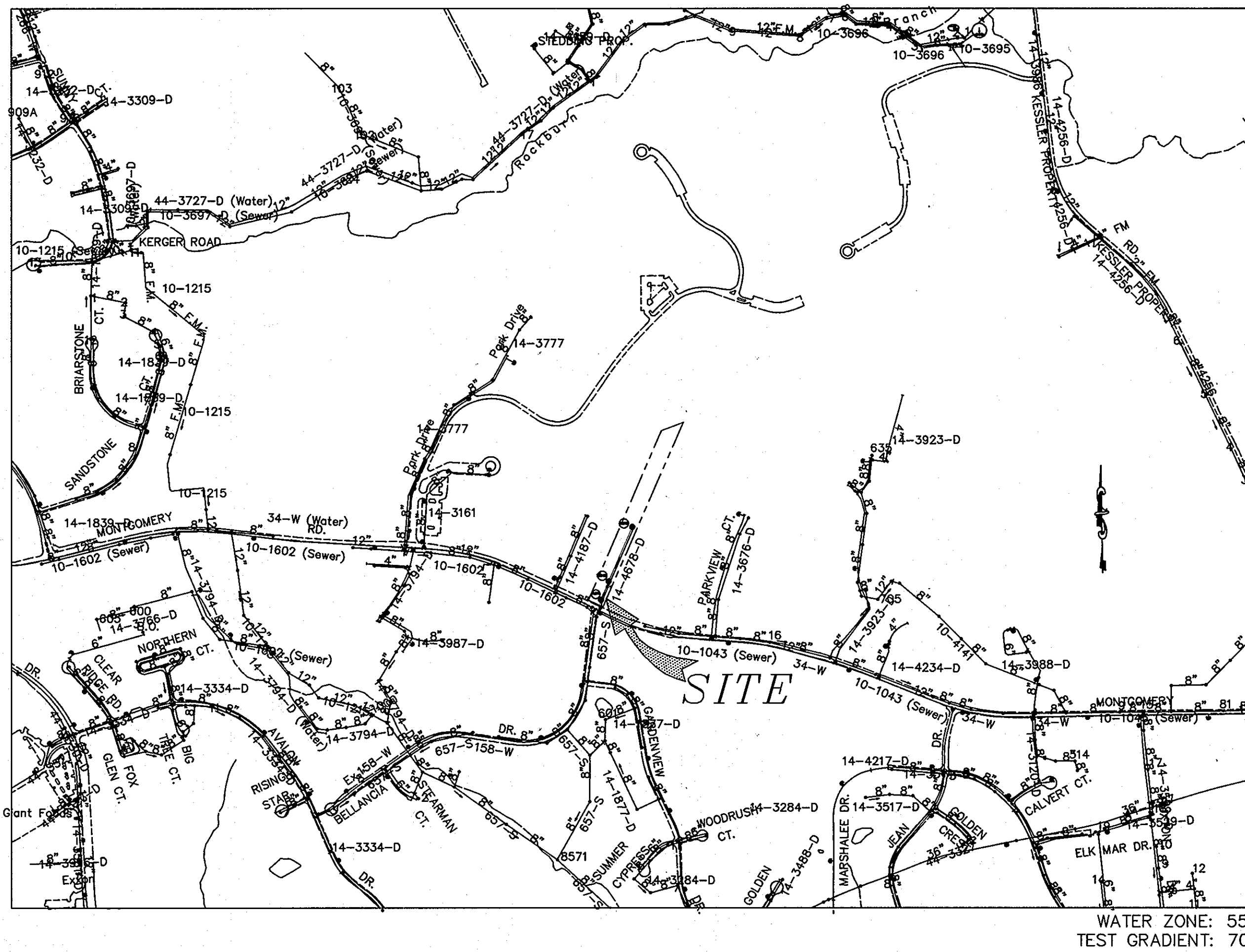


QUANTITY TABLE				
ITEMS	QUANTITIES ESTIMATED	QUANTITIES	TYPE	MANUFACTURER/SUPPLIER
STANDARD MH (HO. CO. STD.G-5.12)	3 EACH	3.0 EA.	PRE-CAST CONCRETE	ATLANTIC CONCRETE PRODUCTS INC.
8" SEWER MAIN	112-389' L.F.	110.0 CF.	SDR-35	JM EAGLE / 1/2 WATER SEWER MAIN
8" SEWER MAIN (PVC) C-900	518-304' L.F.	580 L.F.	C-900	JM EAGLE / 1/2 WATER SEWER MAIN
4" SHC	95 L.F.	95 L.F.	SDR-35	JM EAGLE / 1/2 WATER SEWER MAIN
8" WATER MAIN (PVC C 900, DR-18)	649 L.F.	650.0 CF.	C-1000	JM EAGLE / 1/2 WATER SEWER MAIN
1 1/2" WATER HOUSE CONNECTION	31-25 L.F.	30.0	K-COPPER	JM EAGLE / 1/2 WATER SEWER MAIN
# 1 1/2" WHC	5 EACH	5 EA.		A.Y. MCDONALD / 1/2 WATER SEWER MAIN
8"x12" T. S. & V	1 EACH	1.0 EA.	FOUL METAL BOX	AMERICAN FIELD CONTROL / 1/2 WATER SEWER MAIN
1/16 H.B. (8")	2 EACH	2.0	D.I.P.	AMERICAN FIELD CONTROL / 1/2 WATER SEWER MAIN
8"x6" F.H.T. & V.	1 EACH	1.0 EA.		AMERICAN FIELD CONTROL / 1/2 WATER SEWER MAIN
FIRE HYDRANT	1 EACH		B-84-B	AMERICAN FIELD CONTROL / 1/2 WATER SEWER MAIN
8" CAP & BUTTRESS	1 EACH	1	D.I.D.	AMERICAN FIELD CONTROL / 1/2 WATER SEWER MAIN
TWIN WHC	1 EACH	1		A.Y. MCDONALD / 1/2 WATER SEWER MAIN
# 4" SHC	8 EACH	8	SDR-35	JM EAGLE / 1/2 WATER SEWER MAIN
NAME OF UTILITY CONTRACTOR: CCS				
SURVEY AND DRAFTING DIVISION AS-BUILT DATE				

WATER / SEWER MAIN TABULATION CHART		
APPURTENANCE	NORTHING	EASTING
MH 1	N 563368.8218	E 1378749.6280
MH 2	N 563416.4877	E 1378666.8277
MH 3	N 563300.7239	E 1378976.3719
TS & V	N 563296.7115	E 1378741.4314
1/16 H.B.	N 563316.8773	E 1378751.2930
1/16 H.B.	N 563354.8681	E 1378753.4216
8" CAP AND BUTTRESS	N 563626.4272	E 1378985.1772
2"x6" Tee	N 563457.4822	E 1378106.4124
PH.	N 563451.6000	E 1378210.9355



LOCATION MAP

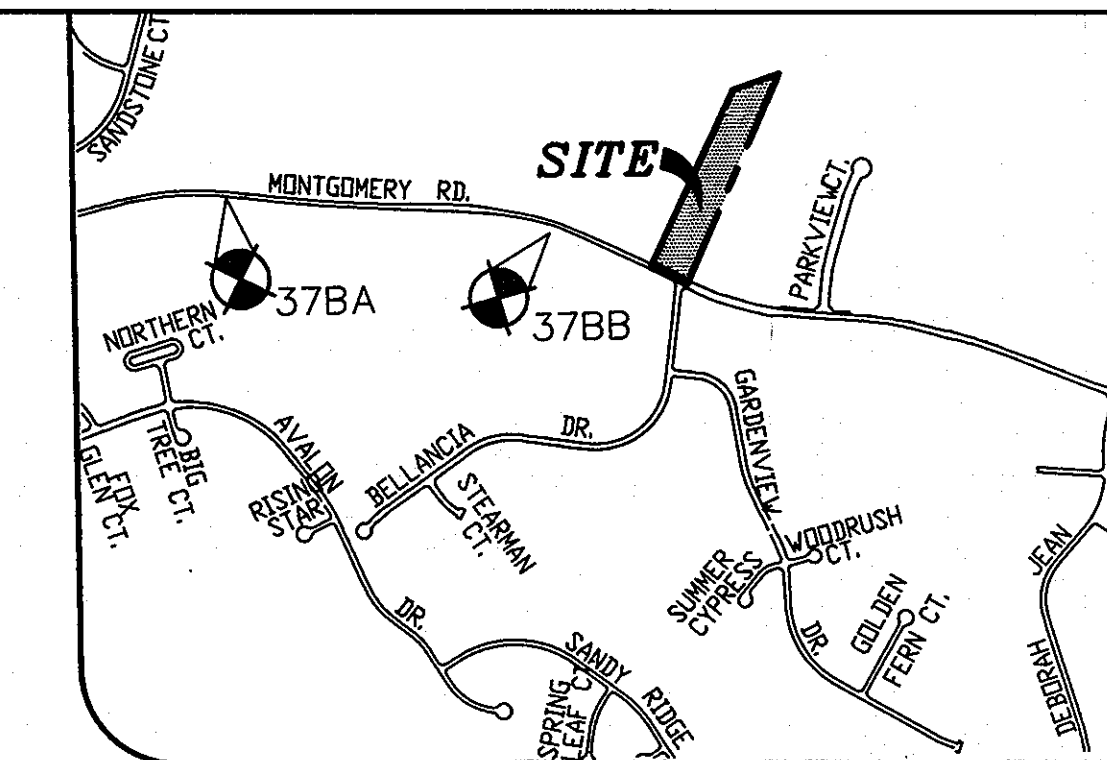
SCALE: 1" = 600'  
ADC MAP: 4936 H6

LEGEND

- 8" --- EXISTING SEWER MAIN AND MANHOLE
- 8" W --- EXISTING WATER MAIN AND VALVE
- --- EXISTING FIRE HYDRANT
- PROPOSED SEWER MAIN
- PROPOSED SEWER HOUSE CONNECTION
- --- PROPOSED SEWER MANHOLE
- EX. WHC --- EXISTING WATER HOUSE CONNECTION
- EX. SHC --- EXISTING SEWER HOUSE CONNECTION

TYPE OF BUILDING	
RESIDENTIAL	9
No. OF UNITS	7
No. OF WATER HOUSE CONNECTION	7
No. OF SEWER HOUSE CONNECTIONS	8
DRAINAGE AREA	LITTLE PATUXENT
TREATMENT PLANT	LITTLE PATUXENT

- FOR PVC WATER MAINS, ALL RECORDS FOR THE QUALITY CONTROL AND QUALIFICATION TEST REQUIREMENTS NOTED IN SECTION 5.1 OF THE ANNA STANDARD SPEC FOR PVC PRESSURE PIPE SHALL BE SUBMITTED WITH THE PIPE MATERIAL CERTIFICATIONS OR SHOP DRAWINGS PRIOR TO APPROVAL OF THE MATERIAL FOR USE. THE TEST RECORDS SHALL BE FOR THE PIPE TO BE INSTALLED UNDER THIS CONTRACT. ALL PVC PIPE SHALL CONTAIN MARKINGS TO ALLOW CROSS REFERENCING OF THE PIPE SUPPLIED TO THE TEST RECORDS RESERVED.
- PIPE SPRINKLER SYSTEMS FOR ALL SINGLE FAMILY DWELLINGS SHALL HAVE A MINIMUM OF A 1-1/2" CONNECTION WITH A 1" OUTSIDE METER SETTINGS.
- FIRE HYDRANTS ARE D.I.P. ONLY. VALVES ARE TO BE ATTACHED WITH IRON FITTINGS AND CONCRETE ANCHORS. THE DIMENSION RATIO FOR PVC MAIN SHALL BE 18. EPOXY COATED DIP OR PVC FITTINGS.



GENERAL NOTES

SCALE: 1"=1000'

- APPROXIMATE LOCATIONS OF EXISTING MAINS ARE SHOWN. THE CONTRACTOR SHALL TAKE ALL NECESSARY PRECAUTIONS TO PROTECT EXISTING MAINS AND SERVICES AND MAINTAIN UNINTERRUPTED SERVICE. ANY DAMAGE INCURRED SHALL BE REPAIRED IMMEDIATELY TO THE SATISFACTION OF THE ENGINEER AT THE CONTRACTOR'S EXPENSE.
- TOPOGRAPHY SHOWN HEREON IS BASED ON A FIELD RUN SURVEY PERFORMED ON OR ABOUT SEPTEMBER 2003 BY MILDENBERG, BOENDER ASSOCIATES.
- HORIZONTAL AND VERTICAL SURVEY CONTROLS: THE COORDINATES SHOWN ON THE DRAWINGS ARE BASED ON MARYLAND STATE REFERENCE SYSTEM NAD '83/'91 AS PROJECTED BY HOWARD COUNTY GEODETIC CONTROL STATION NO. 291F. ALL VERTICAL CONTROLS ARE BASED ON NAVD '88. VERTICAL CONTROLS PROVIDED ON THE DRAWINGS ARE HO.CO. GEODETIC CONTROL STA. 42R1 AND 42R2.
- ALL PIPE ELEVATIONS SHOWN ARE INVERT ELEVATIONS UNLESS OTHERWISE NOTED ON THE PLANS.
- CLEAR ALL UTILITIES BY A MINIMUM OF 12 INCHES. CLEAR ALL POLES BY 5'-0" MINIMUM OR TUNNEL AS REQUIRED UNLESS OTHERWISE NOTED. THE OWNER HAS CONTACTED THE UTILITY COMPANIES AND HAS MADE ARRANGEMENTS FOR BRACING OF POLES AS SHOWN ON THE DRAWINGS. IN THE EVENT THE CONTRACTOR'S WORK REQUIRES THE BRACING OF ADDITIONAL POLES, ANY COST INCURRED BY THE OWNER FOR THE BRACING OF ADDITIONAL POLES OR DAMAGES SHALL BE DEDUCTED FROM MONIES OWED THE CONTRACTOR. THE CONTRACTOR SHALL COORDINATE WITH THE UTILITY COMPANIES TO SCHEDULE THE BRACING OF THE POLES.
- FOR DETAILS NOT SHOWN ON THE DRAWING, AND FOR MATERIALS AND CONSTRUCTION METHODS, USE HOWARD COUNTY DESIGN MANUAL, VOLUME IV, STANDARD SPECIFICATIONS AND DETAILS FOR CONSTRUCTION (LATEST EDITION). THE CONTRACTOR SHALL HAVE A COPY OF VOLUME IV ON THE JOB.
- WHERE EXISTING UTILITIES, THEY ARE NOTED BY THE SYMBOL AT THE LOCATIONS OF THE TEST PITS. A NOTE OR NOTES CONTAINING THE RESULTS OF THE TEST PIT OR PITS IS INCLUDED ON THE DRAWINGS. EXISTING UTILITIES IN THE VICINITY OF THE PROPOSED WORK FOR WHICH TEST PITS HAVE NOT BEEN DUG SHALL BE LOCATED BY THE CONTRACTOR TWO WEEKS IN ADVANCE OF CONSTRUCTION OPERATIONS AT HIS OWN EXPENSE.
- THE CONTRACTOR SHALL NOTIFY THE FOLLOWING UTILITY COMPANIES OR AGENCIES AT LEAST FIVE WORKING DAYS BEFORE STARTING WORK SHOWN ON THESE PLANS:

AT&T	1-800-252-1133
BCE (CONSTRUCTION SERVICES)	410-850-4620
BCE (EMERGENCY)	410-685-1400
BUREAU OF UTILITIES	410-313-4800
COLONIAL PIPELINE CO.	410-795-1390
STATE HIGHWAY ADMINISTRATION	410-531-5533
VERIZON	1-800-743-0033/410-224-9210
MISS UTILITY	1-800-257-7777

- TREES AND SHRUBS ARE TO BE PROTECTED FROM DAMAGE TO THE MAXIMUM EXTENT. TREES AND SHRUBS LOCATED WITHIN THE CONSTRUCTION STRIP ARE NOT TO BE REMOVED OR DAMAGED BY THE CONTRACTOR.
- THE CONTRACTOR SHALL REMOVE TREES, STUMPS AND ROOTS ALONG THE LINE OF EXCAVATION. PAYMENT FOR SUCH REMOVAL SHALL BE INCLUDED IN THE UNIT PRICE BID FOR CONSTRUCTION OF THE MAIN.
- THE CONTRACTOR SHALL NOTIFY THE BUREAU OF HIGHWAYS, HOWARD COUNTY, AT (410)313-7450 AT LEAST FIVE WORKING DAYS BEFORE OPEN CUTTING OR BORING/JACKING OF ANY COUNTY ROAD FOR LAYING WATER/SEWER MAINS OR HOUSE CONNECTIONS. THE APPROVAL OF THESE DRAWINGS WILL CONSTITUTE COMPLIANCE WITH DPW REQUIREMENTS PER SECTION 18.114(a) OF THE HOWARD COUNTY CODE.

SEWER

- ALL SEWER MAINS SHALL BE D.I.P. OR P.V.C. UNLESS OTHERWISE NOTED.
- ALL MANHOLES SHALL BE 4'-0" INSIDE DIAMETER UNLESS OTHERWISE NOTED.
- FORCE MAINS SHALL BE D.I.P. ONLY.
- MANHOLES SHOWN WITH 12" AND 16" WALLS ARE FOR BRICK MANHOLES ONLY.
- MANHOLES DESIGNATED W.T. IN PLAN AND PROFILE SHALL HAVE WATERTIGHT FRAME AND COVER, STANDARD DETAIL GS.52, WHERE WATERTIGHT MANHOLE FRAMES AND COVERS ARE USED, SET TOP OF FRAME 1'-6" ABOVE FINISHED GRADE UNLESS OTHERWISE NOTED ON THE DRAWINGS.
- HOUSE(S) WITH THE SYMBOL "C.N.S." INDICATED THAT THE CELLAR CANNOT BE SERVED.

WATER

- ALL WATER MAINS SHALL BE PVC C-900 (DR-18) UNLESS OTHERWISE NOTED.
- TOPS OF ALL WATER MAINS SHALL HAVE A MINIMUM OF 3'-6" OF COVER UNLESS OTHERWISE NOTED.
- VALVES ADJACENT TO TEES SHALL BE STRAPPED TO TEES.
- ALL FITTINGS SHALL BE BUTTRESSED OR ANCHORED WITH CONCRETE, IN ACCORDANCE WITH STANDARD DETAILS UNLESS OTHERWISE PROVIDED FOR ON THE DRAWINGS.
- FIRE HYDRANTS SHALL BE SET TO THE BURY LINE ELEVATIONS SHOWN ON THE DRAWINGS. ALL FIRE HYDRANTS SHALL BE INSTALLED IN ACCORDANCE WITH STANDARD DETAILS. THE SOIL AROUND THE FIRE HYDRANT SHALL BE COMPACTED IN ACCORDANCE WITH SECTION 1000 AND SECTION 1005 OF THE STANDARD SPECIFICATIONS.
- THE CONTRACTOR SHALL NOT OPERATE ANY WATER MAIN VALVES ON THE EXISTING WATER SYSTEM.
- UNLESS OTHERWISE NOTED ON THE PLANS OR IN THE SPECIFICATIONS, SEVENTEEN (17) POUND SACRIFICIAL ANODES SHALL BE INSTALLED ON ALL VALVES AND METALLIC FITTINGS USED WITH WATER MAINS IN ACCORDANCE WITH VOLUME IV, STANDARD SPECIFICATIONS AND DETAILS FOR CONSTRUCTION. MAGNESIUM ANODES SHALL BE INSTALLED ON ALL VALVES AND DUCTILE IRON FITTINGS INCLUDING RESTRAINTS AND HARNESSSES. ZINC ANODES SHALL BE INSTALLED ON ALL STAINLESS STEEL FITTINGS AND SADDLES USED WITH PVC MAINS. ALL "TEES" USED WITH PVC MAINS SHALL BE DUCTILE IRON.
- ALL SINGLE WATER HOUSE CONNECTIONS ARE TO BE 1 1/2" WITH 1" OUTSIDE METER SETTINGS.

INDEX OF DRAWINGS

NO.	DESCRIPTION
1	TITLE SHEET
2	WATER AND SEWER PLAN
3	WATER AND SEWER PROFILES

**OWNER**  
RONALD B. WILDMAN  
4747 BONNIE BRANCH ROAD  
ELLCOTT CITY, MD. 21043  
410-869-9999

**EROSION AND SEDIMENT CONTROL FOR THIS CONTRACT IS PROVIDED UNDER: F-10-107**

I/WE CERTIFY THAT ALL DEVELOPMENT AND CONSTRUCTION WILL BE DONE ACCORDING TO THIS PLAN, AND THAT ANY RESPONSIBLE PERSONNEL INVOLVED IN THE CONSTRUCTION PROJECT WILL HAVE A CERTIFICATE OF ATTENDANCE AT A DEPARTMENT OF THE ENVIRONMENT APPROVED TRAINING PROGRAM FOR THE CONTROL OF SEDIMENT AND EROSION BEFORE BEGINNING THE PROJECT. I ALSO AUTHORIZE PERIODIC ON-SITE INSPECTION BY THE HOWARD SOIL CONSERVATION DISTRICT.

*Ronald B. Wildman* 10/6/10  
DEVELOPER'S SIGNATURE DATE

DEVELOPER'S NAME

I HEREBY CERTIFY THAT THIS PLAN FOR EROSION AND SEDIMENT CONTROL REPRESENTS A PRACTICAL AND WORKABLE PLAN BASED ON MY PERSONAL KNOWLEDGE OF THE SITE CONDITIONS AND THAT IT WAS PREPARED IN ACCORDANCE WITH THE REQUIREMENTS OF THE HOWARD SOIL CONSERVATION DISTRICT.

*R. Jacob Hikmat* 10/6/10  
ENGINEER'S SIGNATURE DATE  
R. JACOB HIKMAT  
ENGINEER'S NAME

THIS DEVELOPMENT PLAN IS APPROVED FOR SOIL EROSION AND SEDIMENT CONTROL BY THE SOIL CONSERVATION DISTRICT.

*John K. Roberts* 11/2/10  
THIRD PARTY DATE

I HEREBY CERTIFY THAT THESE DOCUMENTS WERE PREPARED OR APPROVED BY ME AND THAT I AM A DULY LICENSED PROFESSIONAL ENGINEER UNDER THE LAWS OF THE STATE OF MARYLAND, LICENSE NO.: 17942, EXPIRATION DATE: 9/3/12.

PLAN REFERENCE NUMBERS:  
F-10-107, SP-05-007

CONTRACT NO.: 14-4678-D

MARBUCK ESTATES  
LOTS 1 THRU 8 AND OPEN SPACE LOT 9  
WATER AND SEWER MAIN EXTENSION  
HOWARD COUNTY, MARYLAND  
DEPARTMENT OF PUBLIC WORKS

DEPARTMENT OF PUBLIC WORKS  
HOWARD COUNTY, MARYLAND

DEPARTMENT OF PLANNING & ZONING  
HOWARD COUNTY, MARYLAND

**MILDENBERG, BOENDER & ASSOC., INC.**  
Engineers Planners Surveyors

6800 Derrypath Road, Suite 150, Elkridge, Maryland 21075  
(410) 997-0296 Fax: (410) 997-0288 Fax



engineering	MMT				
illustration	MMT				
approval	RJH	KCT	3	AS BUILT	7-20-11
project	09-005	MBA	2	REV QTY TABLE & GEN. NOTES	9/11
date	OCT. 2010	MBA	1	REVISED QUANTITY TABLE & TABULATION CHART	3-21/11
	BY	NO.	REVISION	DATE	

TITLE SHEET

600' SCALE MAP NO. 37 BLOCK NO. 5

**MARBUCK ESTATES**  
LOTS 1 THRU 8 AND OPEN SPACE LOT 9  
CONTRACT NO.: 14-4678-D  
FIRST ELECTION DISTRICT  
HOWARD COUNTY

scale AS SHOWN

1 OF 3

**SEWER HOUSE CONNECTION AS-BUILT LOCATION TABLE**

LOT	ADDRESS	LOCATION DIMENSION 1	LOCATION DIMENSION 2
1	MONTGOMERY ROAD	SMH#1 40.0'	WHC#1 7.5'
2	MONTGOMERY ROAD	FHV 40.7'	F.H. 46.7'
3	MONTGOMERY ROAD	TSVC 10'	TO SMH#2 21'
4	MONTGOMERY ROAD	TO WHC 7.6'	SMH#3 6.5'
5	MONTGOMERY ROAD	TO WHC 5.7'	TO F.C. CROSS 42'
6	MONTGOMERY ROAD	TO SMH#3 10.5'	TO WHC 25.0'
7	MONTGOMERY ROAD	TO SMH#3 10.3'	TO I-3 24.0'
8	MONTGOMERY ROAD	TO SMH#3 13.6'	TO I-3 14.4'

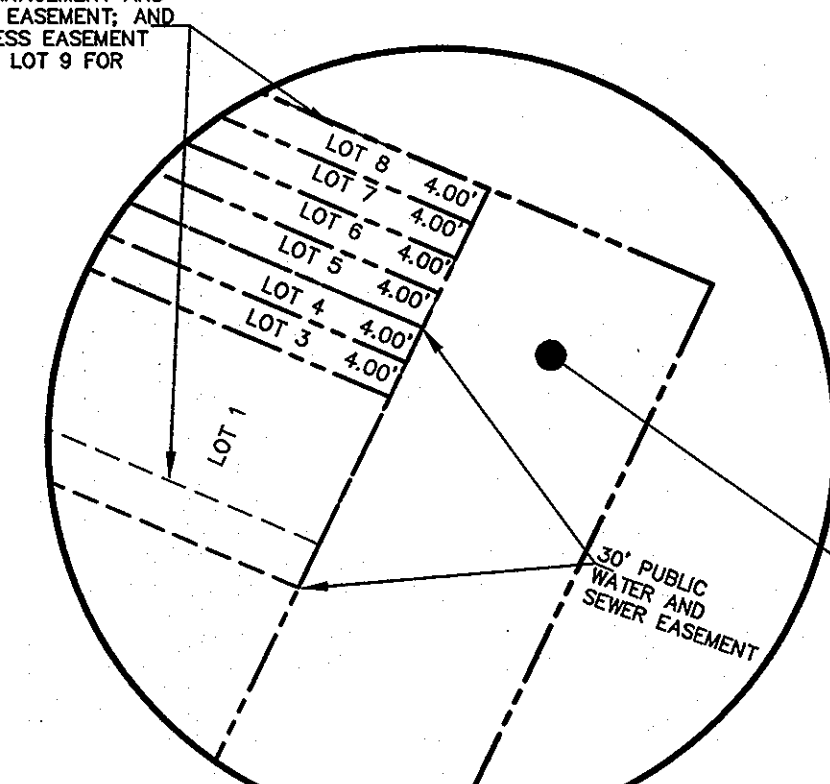
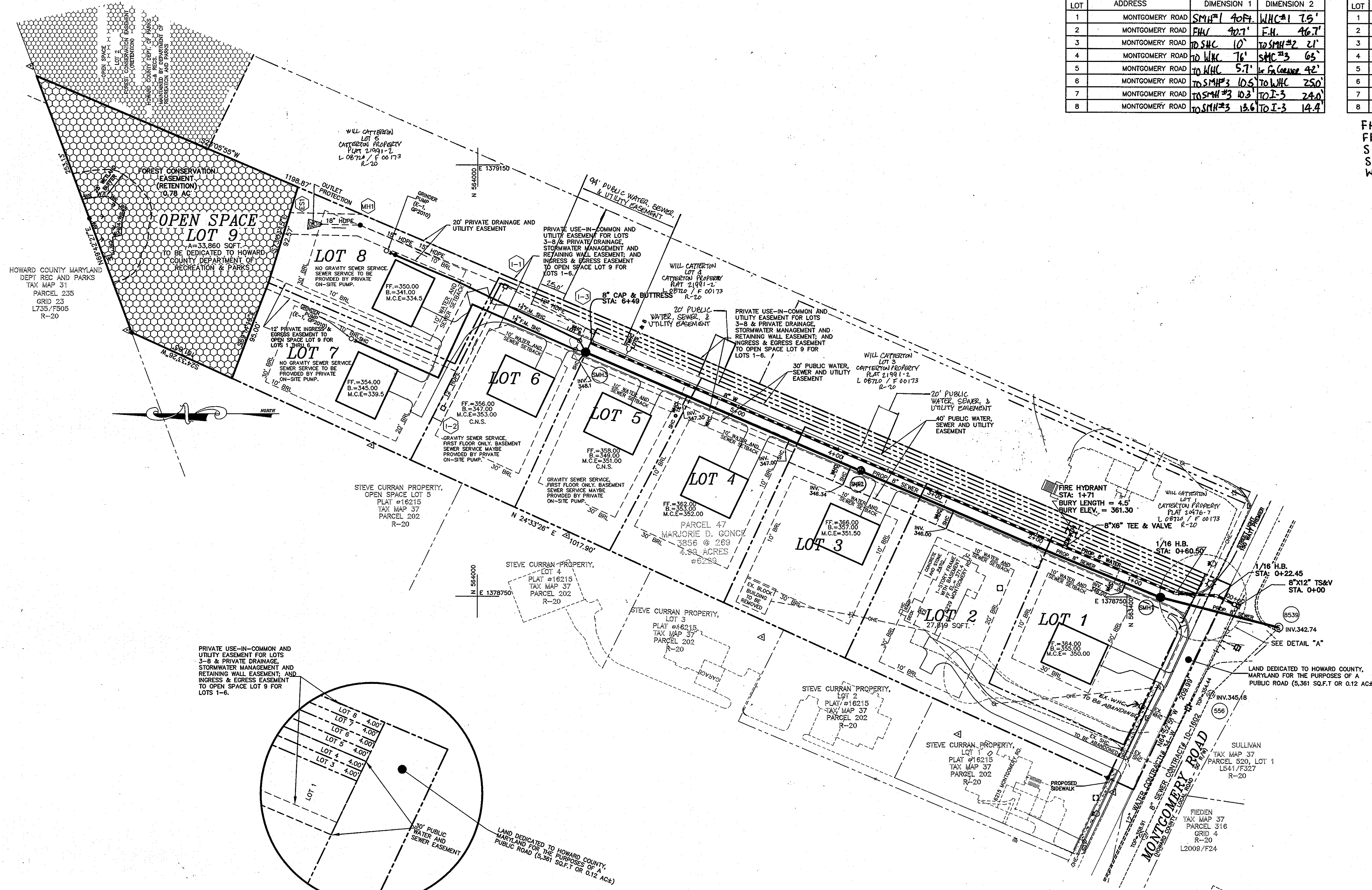
**WATER HOUSE CONNECTION AS-BUILT LOCATION TABLE**

LOT	ADDRESS	LOCATION DIMENSION 1	LOCATION DIMENSION 2
1	MONTGOMERY ROAD	F.H. 62'	SMH#1 46'
2	MONTGOMERY ROAD	WHL#3 41.3'	SMH#2 84'
3	MONTGOMERY ROAD	SMH#2 25'	SHC 10'
4	MONTGOMERY ROAD	WHL#3 36.7'	SHC LOTS 3'
5	MONTGOMERY ROAD	SHC 5.7'	TO F.C. CROSS 34.7'
6	MONTGOMERY ROAD	I-3 11.9'	SMH#3 17.2'
7	MONTGOMERY ROAD	SMH#3 40.5'	WHC#6 46.0'
8	MONTGOMERY ROAD	SMH#3 40.5'	WHC#6 46.0'

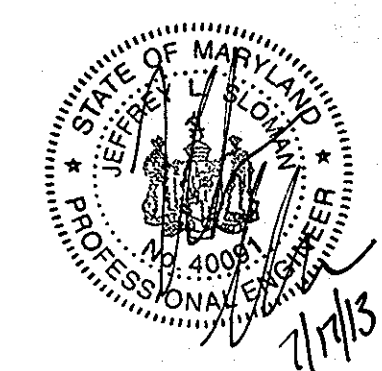
FH = FIRE HYDRANT  
 FHV = FIRE HYDRANT VALVE  
 SMH = SANITARY MANHOLE  
 SHC = SANITARY HOUSE CONNECTION  
 WHC = WATER HOUSE CONNECTION

FIRE HYDRANT TO FHV = 7.5'  
 FHV TO SMH#1 = 10.30'  
 TS2V TO SMH#1 = 26.7'  
 TS2V TO EX. SMH = 14.2'

LOTS #7 & 8 CONNECTIONS IN FRONT OF LOTS #5



FRONTAGE DETAIL "A"  
 SCALE 1" = 20'



I hereby certify that these documents were prepared or approved by me and that I am a duly licensed Professional Engineer under the laws of the State of Maryland, License No. 40091, Exp Date 2/13/15

**OWNER/DEVELOPER**

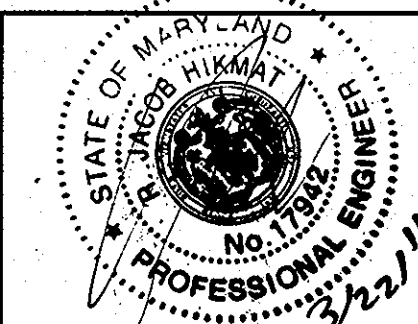
RONALD B. WILDMAN  
 4747 BONNIE BRANCH ROAD  
 ELLICOTT CITY, MD. 21043  
 410-869-9999

**REPLACEMENT SHEET**

DEPARTMENT OF PUBLIC WORKS  
 HOWARD COUNTY, MARYLAND

DEPARTMENT OF PLANNING & ZONING  
 HOWARD COUNTY, MARYLAND

**MILDENBERG, BOENDER & ASSOC., INC.**  
 Engineers Planners Surveyors  
 6000 Derryth Road, Suite 150, Ellicott City, Maryland 21075  
 (410) 997-0288 Ball. (410) 997-0288 Fax.



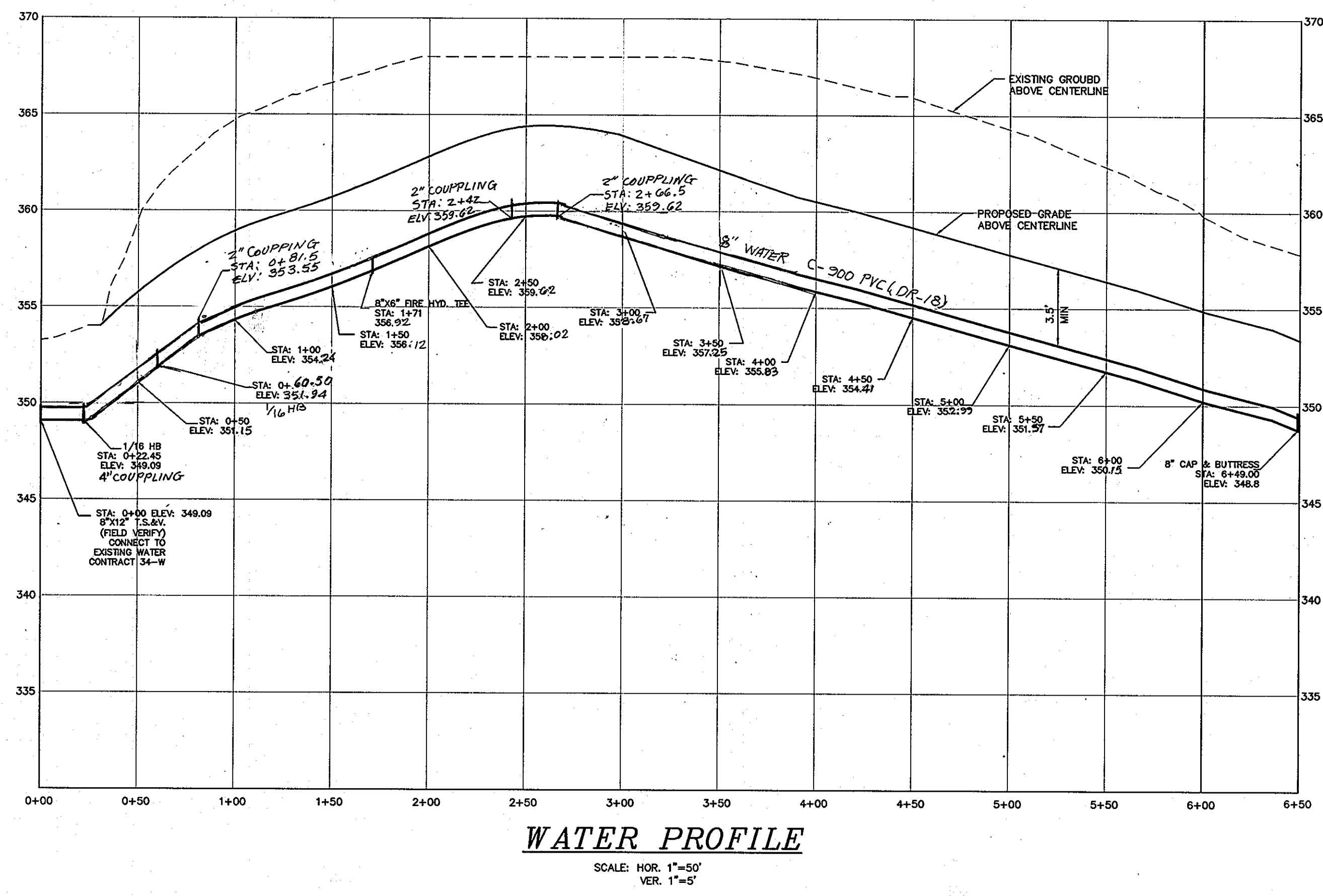
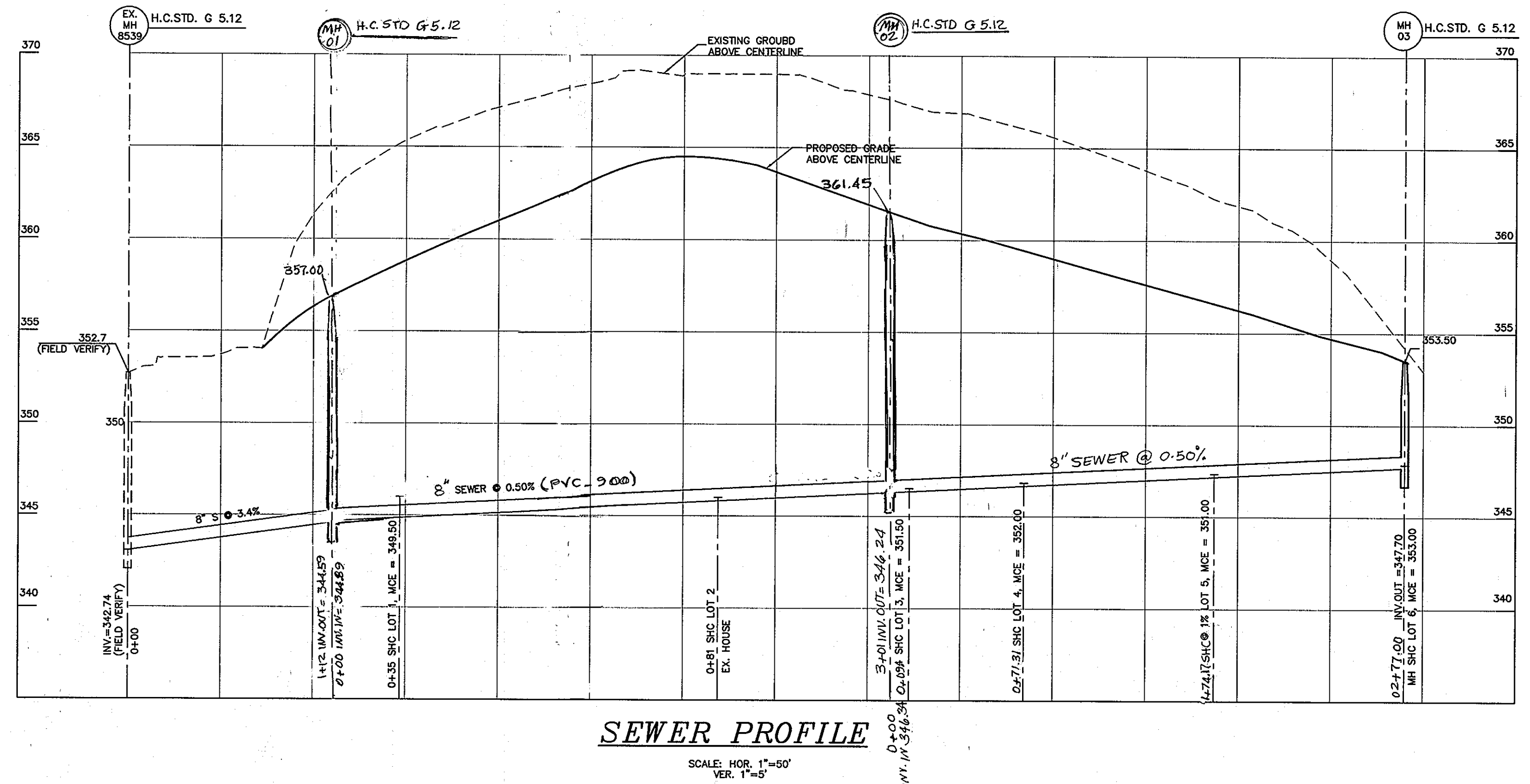
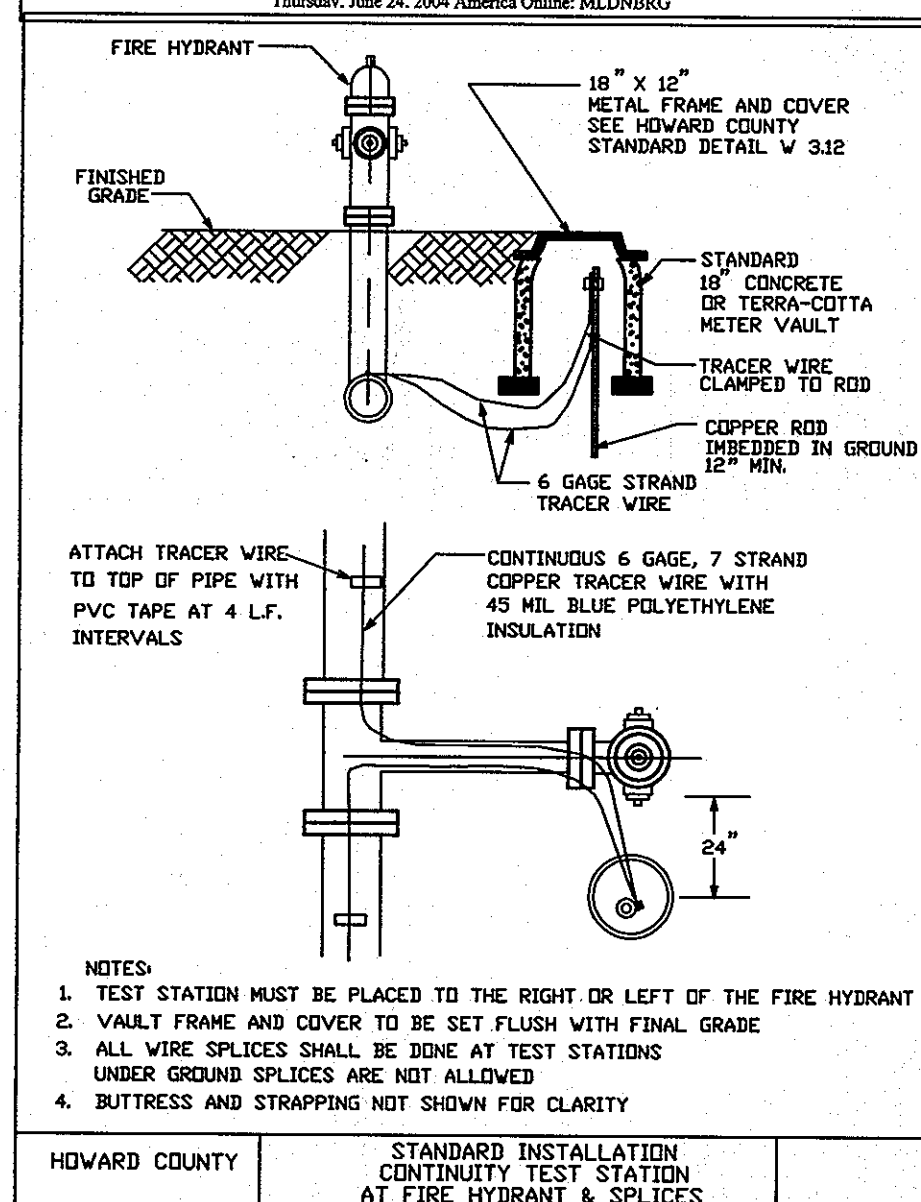
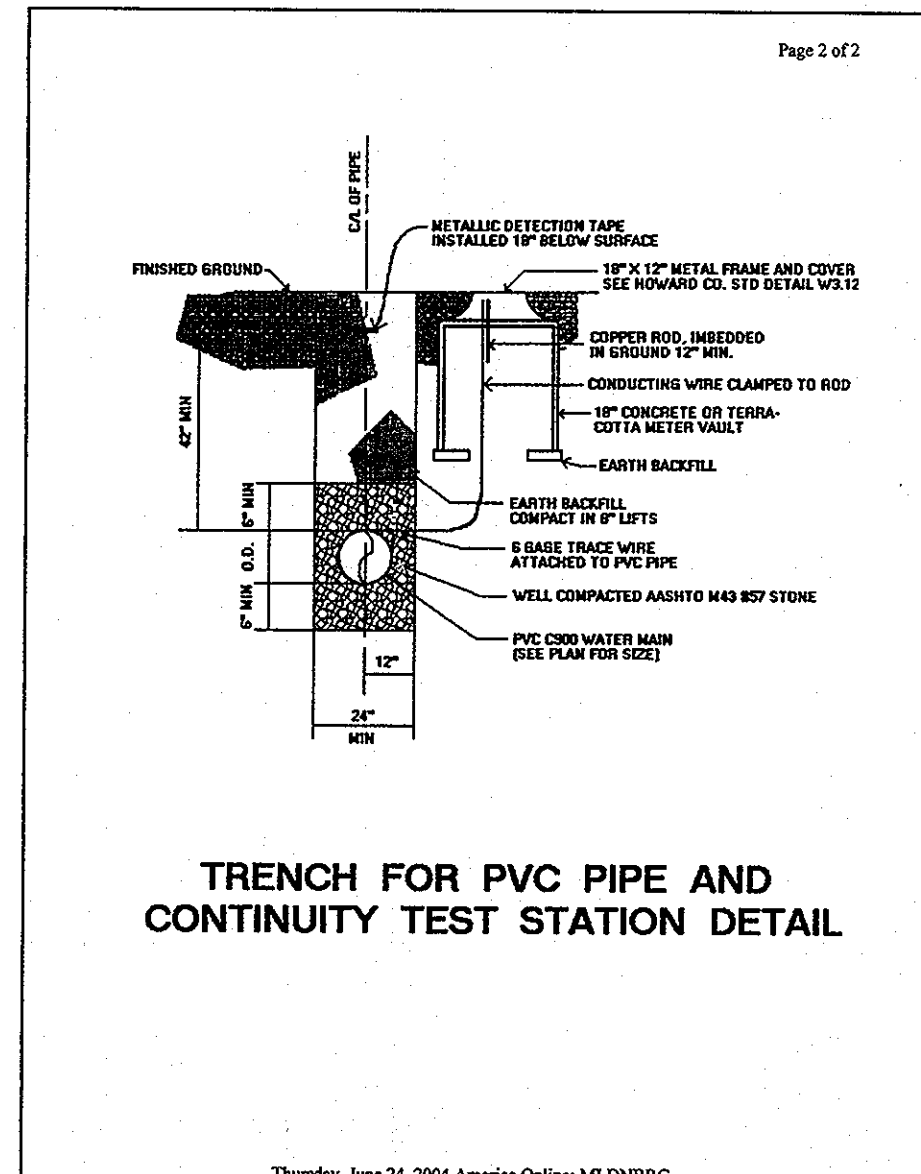
engineering	REV	BY	DATE	REVISION
MMT	1	MBA	7-20-13	As Built
illustration	2	MBA	7/11/13	Added extensions to 3' from sewer easement
approval	3	MBA	8/23/13	Added 4' to 1' of sewer easement
project	4	MBA	9-11-14	Revised 4' to 1' of sewer easement
date	5	MBA	3-15-14	Revised 4' to 1' of sewer easement
	6	MBA	3-15-14	Revised 4' to 1' of sewer easement
	7	MBA	3-15-14	Revised 4' to 1' of sewer easement
	8	MBA	3-15-14	Revised 4' to 1' of sewer easement
	9	MBA	3-15-14	Revised 4' to 1' of sewer easement
	10	MBA	3-15-14	Revised 4' to 1' of sewer easement
	11	MBA	3-15-14	Revised 4' to 1' of sewer easement
	12	MBA	3-15-14	Revised 4' to 1' of sewer easement
	13	MBA	3-15-14	Revised 4' to 1' of sewer easement
	14	MBA	3-15-14	Revised 4' to 1' of sewer easement
	15	MBA	3-15-14	Revised 4' to 1' of sewer easement
	16	MBA	3-15-14	Revised 4' to 1' of sewer easement
	17	MBA	3-15-14	Revised 4' to 1' of sewer easement
	18	MBA	3-15-14	Revised 4' to 1' of sewer easement
	19	MBA	3-15-14	Revised 4' to 1' of sewer easement
	20	MBA	3-15-14	Revised 4' to 1' of sewer easement
	21	MBA	3-15-14	Revised 4' to 1' of sewer easement
	22	MBA	3-15-14	Revised 4' to 1' of sewer easement
	23	MBA	3-15-14	Revised 4' to 1' of sewer easement
	24	MBA	3-15-14	Revised 4' to 1' of sewer easement
	25	MBA	3-15-14	Revised 4' to 1' of sewer easement
	26	MBA	3-15-14	Revised 4' to 1' of sewer easement
	27	MBA	3-15-14	Revised 4' to 1' of sewer easement
	28	MBA	3-15-14	Revised 4' to 1' of sewer easement
	29	MBA	3-15-14	Revised 4' to 1' of sewer easement
	30	MBA	3-15-14	Revised 4' to 1' of sewer easement
	31	MBA	3-15-14	Revised 4' to 1' of sewer easement
	32	MBA	3-15-14	Revised 4' to 1' of sewer easement
	33	MBA	3-15-14	Revised 4' to 1' of sewer easement
	34	MBA	3-15-14	Revised 4' to 1' of sewer easement
	35	MBA	3-15-14	Revised 4' to 1' of sewer easement
	36	MBA	3-15-14	Revised 4' to 1' of sewer easement
	37	MBA	3-15-14	Revised 4' to 1' of sewer easement
	38	MBA	3-15-14	Revised 4' to 1' of sewer easement
	39	MBA	3-15-14	Revised 4' to 1' of sewer easement
	40	MBA	3-15-14	Revised 4' to 1' of sewer easement
	41	MBA	3-15-14	Revised 4' to 1' of sewer easement
	42	MBA	3-15-14	Revised 4' to 1' of sewer easement
	43	MBA	3-15-14	Revised 4' to 1' of sewer easement
	44	MBA	3-15-14	Revised 4' to 1' of sewer easement
	45	MBA	3-15-14	Revised 4' to 1' of sewer easement
	46	MBA	3-15-14	Revised 4' to 1' of sewer easement
	47	MBA	3-15-14	Revised 4' to 1' of sewer easement
	48	MBA	3-15-14	Revised 4' to 1' of sewer easement
	49	MBA	3-15-14	Revised 4' to 1' of sewer easement
	50	MBA	3-15-14	Revised 4' to 1' of sewer easement
	51	MBA	3-15-14	Revised 4' to 1' of sewer easement
	52	MBA	3-15-14	Revised 4' to 1' of sewer easement
	53	MBA	3-15-14	Revised 4' to 1' of sewer easement
	54	MBA	3-15-14	Revised 4' to 1' of sewer easement
	55	MBA	3-15-14	Revised 4' to 1' of sewer easement
	56	MBA	3-15-14	Revised 4' to 1' of sewer easement
	57	MBA	3-15-14	Revised 4' to 1' of sewer easement
	58	MBA	3-15-14	Revised 4' to 1' of sewer easement
	59	MBA	3-15-14	Revised 4' to 1' of sewer easement
	60	MBA	3-15-14	Revised 4' to 1' of sewer easement
	61	MBA	3-15-14	Revised 4' to 1' of sewer easement
	62	MBA	3-15-14	Revised 4' to 1' of sewer easement
	63	MBA	3-15-14	Revised 4' to 1' of sewer easement
	64	MBA	3-15-14	Revised 4' to 1' of sewer easement
	65	MBA	3-15-14	Revised 4' to 1' of sewer easement
	66	MBA	3-15-14	Revised 4' to 1' of sewer easement
	67	MBA	3-15-14	Revised 4' to 1' of sewer easement
	68	MBA	3-15-14	Revised 4' to 1' of sewer easement
	69	MBA	3-15-14	Revised 4' to 1' of sewer easement
	70	MBA	3-15-14	Revised 4' to 1' of sewer easement
	71	MBA	3-15-14	Revised 4' to 1' of sewer easement
	72	MBA	3-15-14	Revised 4' to 1' of sewer easement
	73	MBA	3-15-14	Revised 4' to 1' of sewer easement
	74	MBA	3-15-14	Revised 4' to 1' of sewer easement
	75	MBA	3-15-14	Revised 4' to 1' of sewer easement
	76	MBA	3-15-14	Revised 4' to 1' of sewer easement
	77	MBA	3-15-14	Revised 4' to 1' of sewer easement
	78	MBA	3-15-14	Revised 4' to 1' of sewer easement
	79	MBA	3-15-14	Revised 4' to 1' of sewer easement
	80	MBA	3-15-14	Revised 4' to 1' of sewer easement
	81	MBA	3-15-14	Revised 4' to 1' of sewer easement
	82	MBA	3-15-14	Revised 4' to 1' of sewer easement
	83	MBA	3-15-14	Revised 4' to 1' of sewer easement
	84	MBA	3-15-14	Revised 4' to 1' of sewer easement
	85	MBA	3-15-14	Revised 4' to 1' of sewer easement
	86	MBA	3-15-14	Revised 4' to 1' of sewer easement
	87	MBA	3-15-14	Revised 4' to 1' of sewer easement
	88	MBA	3-15-14	Revised 4' to 1' of sewer easement
	89	MBA	3-15-14	Revised 4' to 1' of sewer easement
	90	MBA	3-15-14	Revised 4' to 1' of sewer easement
	91	MBA	3-15-14	Revised 4' to 1' of sewer easement
	92	MBA	3-15-14	Revised 4' to 1' of sewer easement
	93	MBA	3-15-14	Revised 4' to 1' of sewer easement
	94	MBA	3-15-14	Revised 4' to 1' of sewer easement
	95	MBA	3-15-14	Revised 4' to 1' of sewer easement
	96	MBA	3-15-14	Revised 4' to 1' of sewer easement
	97	MBA	3-15-14	Revised 4' to 1' of sewer easement
	98	MBA	3-15-14	Revised 4' to 1' of sewer easement
	99	MBA	3-15-14	Revised 4' to 1' of sewer easement
	100	MBA	3-15-14	Revised 4' to 1' of sewer easement

**WATER AND SEWER PLAN**

**MARBUCK ESTATES**  
 LOTS 1 THRU 8 AND OPEN SPACE LOT 9  
 CONTRACT NO.: 14-4678-D  
 FIRST ELECTION DISTRICT  
 HOWARD COUNTY

scale  
 AS SHOWN  
**2 OF 3**

FH: 09-005 MARBUCK ESTATES (V09) 09-005-FINAL.DWG



**OWNER/DEVELOPER**  
RONALD B. WILDMAN  
4747 BONNIE BRANCH ROAD  
ELLCOTT CITY, MD. 21043  
410-869-9999

**REPLACEMENT SHEET**

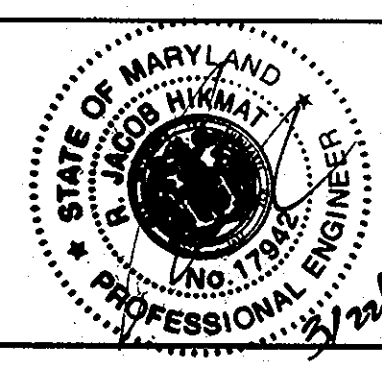
DEPARTMENT OF PUBLIC WORKS  
HOWARD COUNTY, MARYLAND

*Steve C. G...*  
CHIEF, BUREAU OF UTILITIES

DEPARTMENT OF PLANNING & ZONING  
HOWARD COUNTY, MARYLAND

*...*  
CHIEF, DEVELOPMENT ENGINEERING DIVISION

**MILDENBERG, BOENDER & ASSOC., INC.**  
Engineers Planners Surveyors  
6800 Deerpath Road, Suite 150, Elkridge, Maryland 21075  
(410) 997-0266 Ball. (410) 997-0288 Fax.



engineering	MMT				
illustration	MMT				
approval	RJH	MBA	2	REVISED WATER MAIN PROF. CHANGED SEWER MAIN FROM 8" TO 10" 10-18-11	
project	09-005	MBA	1	EXTENDED WATER & SEWER MAIN TO ACCOMMODATE THE RECONFIGURATION OF LOTS 5 & 6.	3-15-11
date	MAR. 2010	BY	NO.	REVISION	DATE

**WATER AND SEWER PROFILES**

600' SCALE MAP NO. 37 BLOCK NO. 5

**MARBUCK ESTATES**  
LOTS 1 THRU 8 AND OPEN SPACE LOT 9  
CONTRACT NO.: 14-4678-D  
FIRST ELECTION DISTRICT  
HOWARD COUNTY

scale  
AS SHOWN  
**3 OF 3**

H:\09-005-MARBUCK ESTATES\DWG\09-005-FINAL.DWG