

GENERAL NOTES

- PART I**
- APPROXIMATE LOCATION OF EXISTING MAINS ARE SHOWN. THE CONTRACTOR SHALL TAKE ALL NECESSARY PRECAUTIONS TO PROTECT EXISTING MAINS AND SERVICES AND MAINTAIN UNINTERRUPTED SERVICE. ANY DAMAGE INCURRED SHALL BE REPAIRED IMMEDIATELY TO THE SATISFACTION OF THE ENGINEER AT THE CONTRACTOR'S EXPENSE.
 - THE TOPOGRAPHY SHOWN HEREON IS BASED ON AN AERIAL SURVEY BY VRM DATED AUGUST 2004.
 - HORIZONTAL AND VERTICAL SURVEY CONTROLS:
THE COORDINATES SHOWN ON THE DRAWINGS ARE BASED ON MARYLAND STATE REFERENCE SYSTEM NAD '83/91 AS PROJECTED BY HOWARD COUNTY GEODETIC CONTROL STATIONS 0016 AND 7.
ALL VERTICAL CONTROLS ARE BASED ON (NAVD '27). VERTICAL CONTROLS PROVIDED ON DRAWINGS ARE:
GEODETIC SURVEY CONTROL 0016 (N 550279.38/E 1357329.96)
BRASS DISC SET ON TOP OF A CONCRETE MONUMENT, LOCATED AT SOUTH SIDE OF CARVED STONE RD. BEFORE STAG HORN PATH 6.4' NORTH OF CONC. SIDEWALK AND 7.9' SOUTH OF MAIN RD.
GEODETIC SURVEY CONTROL 7 (N 549418.07/E 1359806.20)
BRASS DISC SET ON TOP OF A CONCRETE MONUMENT, LOCATED SOUTH OF OAKLAND MILLS RD. BETWEEN SNOWDEN RIVER PKWY AND RAIL ROAD; SW OF HOWARD CO. DEPT. OF PARKS & REC.
 - ALL PIPE ELEVATIONS SHOWN ARE INVERT ELEVATIONS UNLESS OTHERWISE NOTED.
 - CLEAR ALL UTILITIES BY A MINIMUM OF 12 INCHES. CLEAR ALL POLES BY 5'-0" MINIMUM OR TUNNEL AS REQUIRED UNLESS OTHERWISE NOTED. THE OWNER HAS CONTACTED THE UTILITY COMPANIES AND HAS MADE ARRANGEMENTS FOR BRACING OF POLES AS SHOWN ON DRAWINGS. IN THE EVENT THE CONTRACTOR'S WORK REQUIRES THE BRACING OF ADDITIONAL POLES, ANY COST INCURRED BY THE OWNER FOR BRACING OF ADDITIONAL POLES OR DAMAGES SHALL BE DEDUCTED FROM MONIES OWED THE CONTRACTOR. THE CONTRACTOR SHALL COORDINATE WITH THE UTILITY COMPANIES TO SCHEDULE THE BRACING OF THE POLES.
 - FOR DETAILS NOT SHOWN ON THE DRAWINGS, AND FOR MATERIALS AND CONSTRUCTION METHODS USE, HOWARD COUNTY DESIGN MANUAL, VOLUME IV, STANDARD SPECIFICATIONS AND DETAILS FOR CONSTRUCTION (LATEST EDITION). THE CONTRACTOR SHALL HAVE A COPY OF VOLUME IV ON THE JOB.
 - WHERE TEST PITS HAVE BEEN MADE ON EXISTING UTILITIES, THEY ARE NOTED BY THE SYMBOL AT THE LOCATION OF THE TEST PIT. A NOTES OR NOTES CONTAINING THE RESULTS OF THE TEST PIT OR PITS IS INCLUDED ON THE DRAWINGS. EXISTING UTILITIES IN THE VICINITY OF THE PROPOSED WORK FOR WHICH TEST PITS HAVE NOT BEEN DUG SHALL BE LOCATED BY THE CONTRACTOR TWO WEEKS IN ADVANCE OF CONSTRUCTION OPERATION AT HIS OWN EXPENSE.
 - THE CONTRACTOR SHALL NOTIFY THE FOLLOWING UTILITY COMPANIES OR AGENCIES AT LEAST FIVE WORKING DAYS BEFORE STARTING WORK SHOWN THESE PLANS:
AT & T 1-800-252-1133
BGE (CONTRACTOR SERVICE) 410-637-8718
BGE (EMERGENCY) 410-885-0123
BUREAU OF UTILITIES 410-313-4900
COLONIAL PIPELINE CO. 410-795-1390
MISS UTILITY 1-800-257-7777
STATE HIGHWAY ADMINISTRATION 410-531-5533
VERIZON 1-800-743-0033
 - TREES AND SHRUBS ARE TO BE PROTECTED FROM DAMAGE TO THE MAXIMUM EXTENT. TREES AND SHRUBS LOCATED WITHIN THE CONSTRUCTION STRIP ARE NOT TO BE REMOVED OR DAMAGED BY THE CONTRACTOR.
 - THE CONTRACTOR SHALL REMOVE TREES, STUMPS AND ROOTS ALONG THE LINE OF EXCAVATION. PAYMENT FOR SUCH REMOVAL SHALL BE INCLUDED IN THE UNIT PRICE BID FOR THE CONSTRUCTION OF THE MAIN.
 - THE CONTRACTOR SHALL NOTIFY THE BUREAU OF HIGHWAYS, HOWARD COUNTY, AT (410) 313-7450 AT LEAST FIVE WORKING DAYS BEFORE ANY OPEN CUTTING OR BORING/JACKING OF ANY COUNTY ROAD FOR LAYING WATER/SEWER MAINS OR HOUSE CONNECTIONS. THE APPROVAL OF THESE DRAWINGS WILL CONSTITUTE COMPLIANCE WITH DPW REQUIREMENTS PER SECTION 18.114(d) OF THE HOWARD COUNTY CODE.

PART II - WATER PVC (C-900)

- ALL WATER MAINS TO BE PVC (C-900) UNLESS OTHERWISE NOTED.
- TOPS OF ALL WATER MAINS TO HAVE A MINIMUM OF 3'-6" COVER UNLESS OTHERWISE NOTED.
- VALVES ADJACENT TO TEES SHALL BE STRAPPED TO TEES.
- ALL FITTINGS SHALL BE BUTTRESSED OR ANCHORED WITH CONCRETE IN ACCORDANCE WITH THE STANDARD DETAILS UNLESS OTHERWISE PROVIDED FOR ON THE DRAWINGS.
- FIRE HYDRANTS SHALL BE SET TO THE BURY LINE ELEVATIONS SHOWN ON THE DRAWINGS. ALL FIRE HYDRANTS SHALL BE INSTALLED IN ACCORDANCE WITH STANDARD DETAILS. THE SOIL AROUND THE FIRE HYDRANT SHALL BE COMPACTED IN ACCORDANCE WITH SECTION 1000 AND 1005 OF THE STANDARD SPECIFICATIONS.
- THE CONTRACTOR SHALL NOT OPERATE ANY WATER MAIN VALVES ON THE EXISTING WATER SYSTEM.

PART III - SEWER

- ALL SEWER MAINS SHALL BE D.I.P. OR P.V.C UNLESS OTHERWISE NOTED.
- ALL MANHOLES SHALL BE 4'-0" INSIDE DIAMETER UNLESS OTHERWISE NOTED.
- FORCE MAINS SHALL BE D.I.P. ONLY.
- MANHOLES SHOWN WITH 12" AND 16" WALLS ARE FOR BRICK MANHOLES ONLY.
- MANHOLES DESIGNATED W.T. IN PLAN AND PROFILE SHALL HAVE WATER-TIGHT FRAME AND COVER, STANDARD DETAIL C5.52. WHERE WATER-TIGHT MANHOLE FRAME AND COVERS ARE USED, SET TOP OF FRAME 1'-6" ABOVE FINISHED GRADE UNLESS OTHERWISE NOTED ON THE DRAWINGS.
- HOUSE(S) WITH THE SYMBOL "C.N.S." INDICATES THAT CELLAR CANNOT BE SERVED.

SEDIMENT CONTROL MEASURES WILL BE IMPLEMENTED IN ACCORDANCE WITH SECTION 219 OF THE SPECIFICATIONS AND WITH SITE DEVELOPMENT PLAN SDP-10-005.

THIS DEVELOPMENT IS APPROVED FOR SOIL EROSION AND SEDIMENT CONTROL BY THE HOWARD SOIL CONSERVATION DISTRICT.

John R. Roberts
SOIL CONSERVATION DISTRICT _____ DATE _____

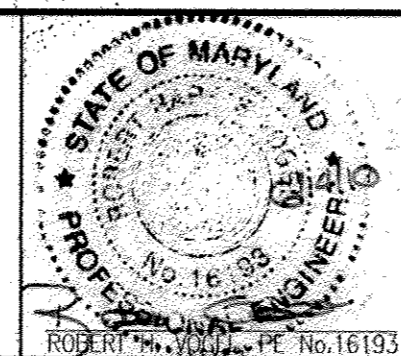
DEPARTMENT OF PUBLIC WORKS
HOWARD COUNTY, MARYLAND

DEPARTMENT OF PLANNING & ZONING
HOWARD COUNTY, MARYLAND

John C. Coen
CHIEF, BUREAU OF UTILITIES _____ DATE _____

John D. ...
CHIEF, DEVELOPMENT ENGINEERING DIVISION _____ DATE _____

ROBERT H. VOGEL ENGINEERING, INC.
ENGINEERS • SURVEYORS • PLANNERS
8407 MAIN STREET TEL: 410.461.7666
ELLCOTT CITY, MD 21043 FAX: 410.461.8961



PROFESSIONAL CERTIFICATE I HEREBY CERTIFY THAT THESE DOCUMENTS WERE PREPARED OR APPROVED BY ME AND THAT I AM A FULLY LICENSED PROFESSIONAL ENGINEER UNDER THE LAWS OF THE STATE OF MARYLAND. LICENSE NO. 16383 EXPIRATION DATE 08-27-2010	1 (REV) REVISED LOCATION OF THE PRIVATE PORTION OF OHC	09/22/13
	2 (REV) REVISED WATER MAIN MATERIAL FROM DIP TO C-900 PVC AND ADJUSTED SITE LAYOUT	04/12/14
	3 RELOCATE FIRE HYDRANT AT SNOWDEN RIVER PKWY	6/14/16
DES: JR		
DRN: JR/KG		
CHK: RHV		
DATE: JUNE 2010	NO.	REVISION
		DATE

**FINAL WATER & SEWER PLAN
COVER SHEET**

**MIDWAY BUSINESS CENTER
SNOWDEN RIVER PARKWAY
PARCEL C
CONTRACT 24-4649-D**

SCALE AS SHOWN

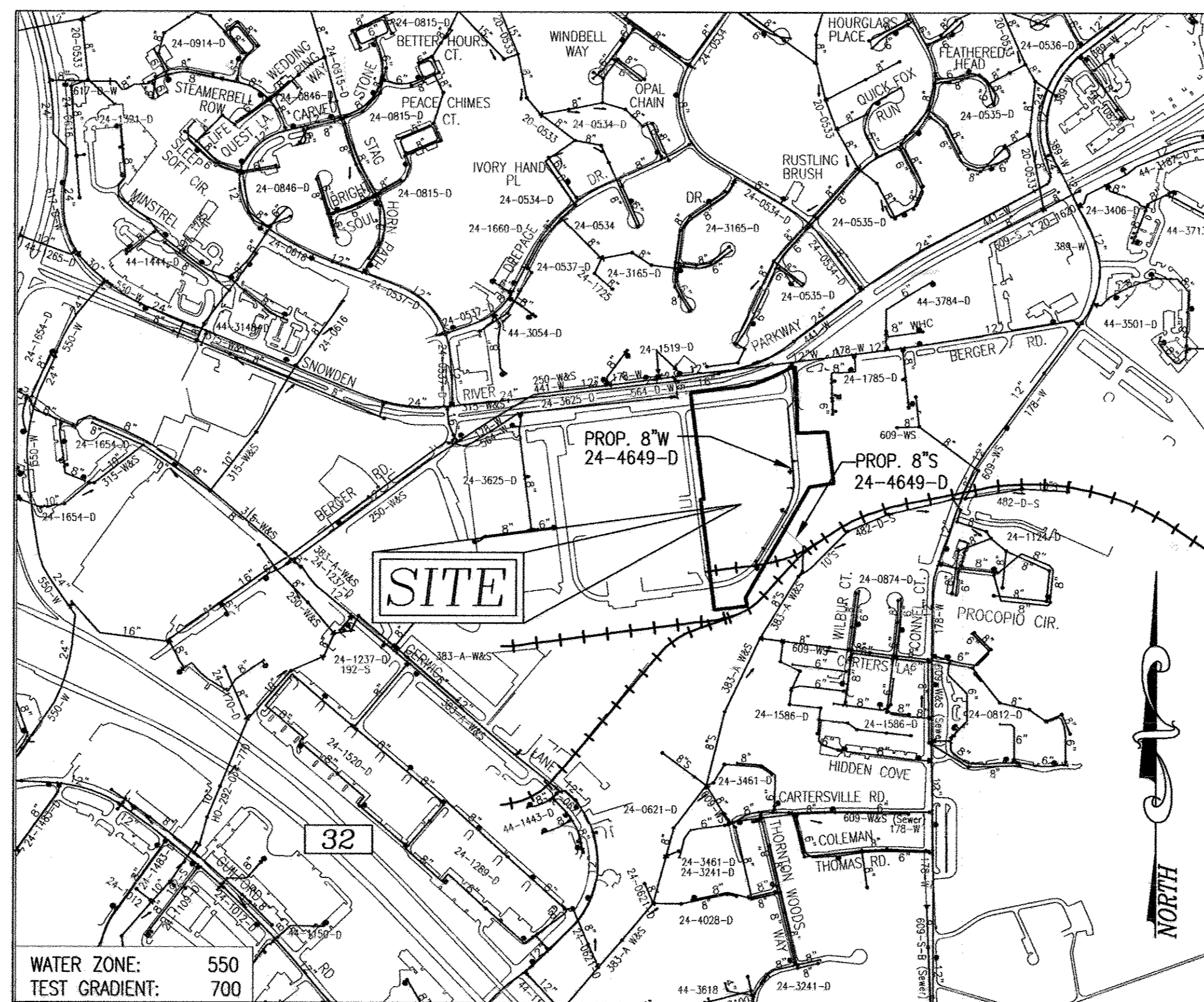
SHEET 1 OF 4

TAX MAP 42 GRID 10
6TH ELECTION DISTRICT

PARCEL 319
HOWARD COUNTY, MARYLAND

FINAL WATER & SEWER PLAN MIDWAY BUSINESS CENTER SNOWDEN RIVER PARKWAY

PARCEL 'C'
CONTRACT 24-4649-D



LOCATION MAP

SCALE: 1"=600'

Type of Building :	FLEX SPACE
No. of Lots/Parcels :	1
No. of single Water House Connections :	3
No. of twin Water House Connections :	0
No. of Sewer House Connections :	0
Drainage Area :	LITTLE PATUXENT RIVER
Treatment Plant :	LITTLE PATUXENT RIVER

PART III - WATER (CONTINUED...)

7. TRACER WIRE AND CONTINUITY TEST STATIONS SHALL BE INSTALLED ON ALL DIP AND PVC WATER MAINS IN ACCORDANCE WITH THE HOWARD COUNTY DESIGN MANUAL.

8. FOR PVC WATER MAINS, ALL RECORDS FOR THE QUALITY CONTROL AND QUALIFICATION TEST REQUIREMENTS NOTED IN SECTION 5.1 OF THE AWWA STANDARD C900 FOR PVC PRESSURE PIPE SHALL BE SUBMITTED WITH THE PIPE MATERIAL CERTIFICATIONS OR SHOP DRAWINGS PRIOR TO APPROVAL OF THE MATERIAL FOR USE. THE TEST RECORDS SHALL BE FOR THE PIPE TO BE INSTALLED UNDER THIS CONTRACT. ALL PVC PIPE SHALL CONTAIN MARKINGS TO ALLOW CROSS REFERENCING OF THE PIPE SUPPLIED TO THE REST RECORDS RECEIVED.

9. UNLESS OTHERWISE NOTED ON THE PLANS OR IN THE SPECIFICATIONS, SEVENTEEN (17) POUND SACRIFICIAL ANODES SHALL BE INSTALLED ON ALL VALVES AND METALLIC FITTINGS USED WITH PVC WATER MAINS IN ACCORDANCE WITH VOLUME IV, STANDARD SPECIFICATIONS AND DETAILS FOR CONSTRUCTION. MAGNESIUM ANODES SHALL BE INSTALLED ON ALL VALVES AND DUCTILE IRON FITTINGS INCLUDING RESTRAINTS AND HARNESSSES. ZINC ANODES SHALL BE INSTALLED ON ALL STAINLESS STEEL FITTINGS AND SADDLES USED WITH PVC MAINS. ALL "TEES" USED WITH PVC MAINS SHALL BE DUCTILE IRON.

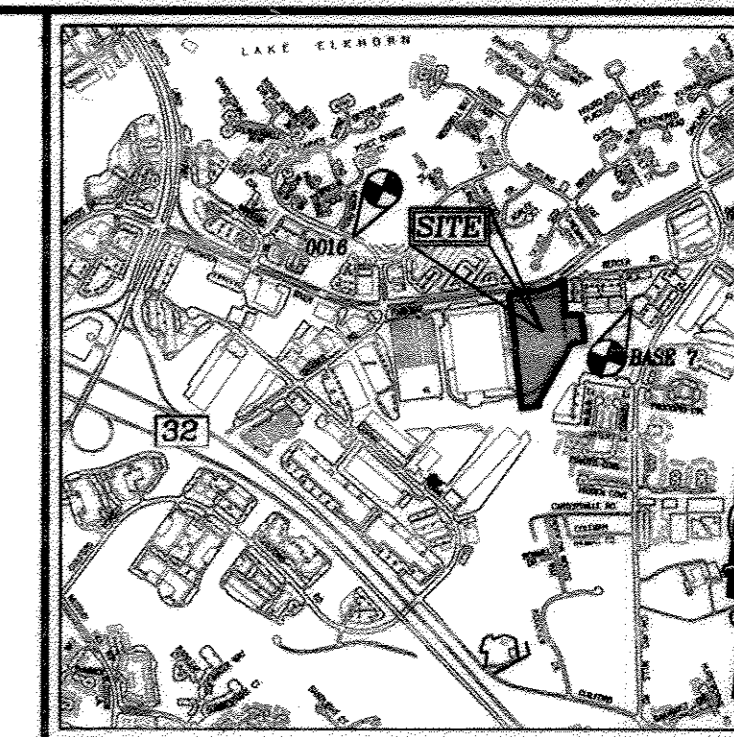
10. PROPER ASSEMBLY OF GASKETED PVC JOINTS: THE MANUFACTURER'S INSERTION LINE OF GASKETED PVC JOINTS INDICATES THE MAXIMUM DEPTH OF INSERTION OF THE SPIGOT INTO THE BELL. THE CONTRACTOR SHALL NOT OVER INSERT OR OVER HAVE THE SPIGOT INTO THE BELL OF THE PVC PIPE.

11. ALL CHANGES IN HORIZONTAL OR VERTICAL DIRECTION OF PVC WATER PIPE SHALL BE MADE WITH STANDARD BENDS, 5-DEGREE SWEEPS OR HIGH DEFLECTION (HD) COUPLINGS. NO BENDING OF THE PIPE OR DEFLECTING OF PVC PIPE JOINTS IS PERMITTED UNLESS HIGH DEFLECTION COUPLINGS OR 5-DEGREE SWEEPS ARE PERMITTED. THE CONTRACTOR SHALL PROVIDE ONE FULL PIPE LENGTH (20-FOOT LONG) ON EITHER SIDE OF THE HIGH DEFLECTION COUPLING OR 5-DEGREE SWEEP. THE CONTRACTOR SHALL USE A VIBRATORY PLATE COMPACTOR OR OTHER APPROVED VIBRATOR TO THOROUGHLY COMPACT THE BEST STRIKE ON BOTH SIDES OF THE HIGH DEFLECTION COUPLING OR 5-DEGREE SWEEP, TAKING CARE NOT TO USE COMMON EQUIPMENT BATTERED OVER THE FITTING.
PVC HIGH DEFLECTION COUPLINGS SHALL BE LIMITED TO A TOTAL DEFLECTION OF 3-DEGREES (1 1/2-DEGREE ON EITHER END OF THE COUPLING) SHALL BE RATED FOR A MINIMUM 200 PSI. VERIFYING THE REQUIREMENTS OF AWWA C900 SHALL HAVE MINIMUM LENGTH OF 18 INCHES AND SHALL HAVE CENTER STOPS. PVC HIGH DEFLECTION COUPLINGS SHALL BE CERTIFIED PVC HIGH DEFLECTION (HD) STOP COUPLINGS OR EQUAL.
5-DEGREE SWEEPS SHALL BE RATED FOR A MINIMUM 225 PSI OR IS VERIFYING THE REQUIREMENTS OF AWWA C900 AND SHALL BE MULTI FITTINGS (MAX) BLUE BRUTE DR18 OR EQUAL.

12. WHEN PVC HIGH DEFLECTION COUPLINGS OR PVC 5-DEGREE SWEEPS ARE USED TO FACILITATE CHANGES IN HORIZONTAL OR VERTICAL ALIGNMENTS OF AWWA C-200 PVC PIPELINES, THE CONTRACTOR SHALL INSTALL DIVISOR PEGS TO PREVENTION OF OVER-INSERTION OF PVC PIPE SPIGOTS OR PLAIN ENDS INTO THE BELL JOINT ON BOTH SIDES OF THE HIGH DEFLECTION COUPLINGS AND 5-DEGREE SWEEP. BELL STOPS SHALL BE PLACED AT THE PROPER INSERTION LINE FOR THE FITTING. THE BELL STOP SHALL BE MANUFACTURED OF DUCTILE IRON AND IDENTIFIERS AND EXPANDED RATHER THAN FLANGES TO ALLOW FOR PIPE EXPANSION AND CONTRACTION. THE BELL STOPS SHALL BE RATED 2000 MPA STOP, AS MANUFACTURED BY BRASS IRON, INC OR APPROVED EQUAL.

BENCHMARKS

HOWARD COUNTY BENCHMARK BASE 7
N 549418.0788 E 1359806.2060 ELEV. 390.312
HOWARD COUNTY BENCHMARK 0016
N 550279.3817 E 1357328.965 ELEV. 358.967



VICINITY MAP

SCALE: 1"=2000'
ADC MAP COORDINATE: 16 A13

LEGEND

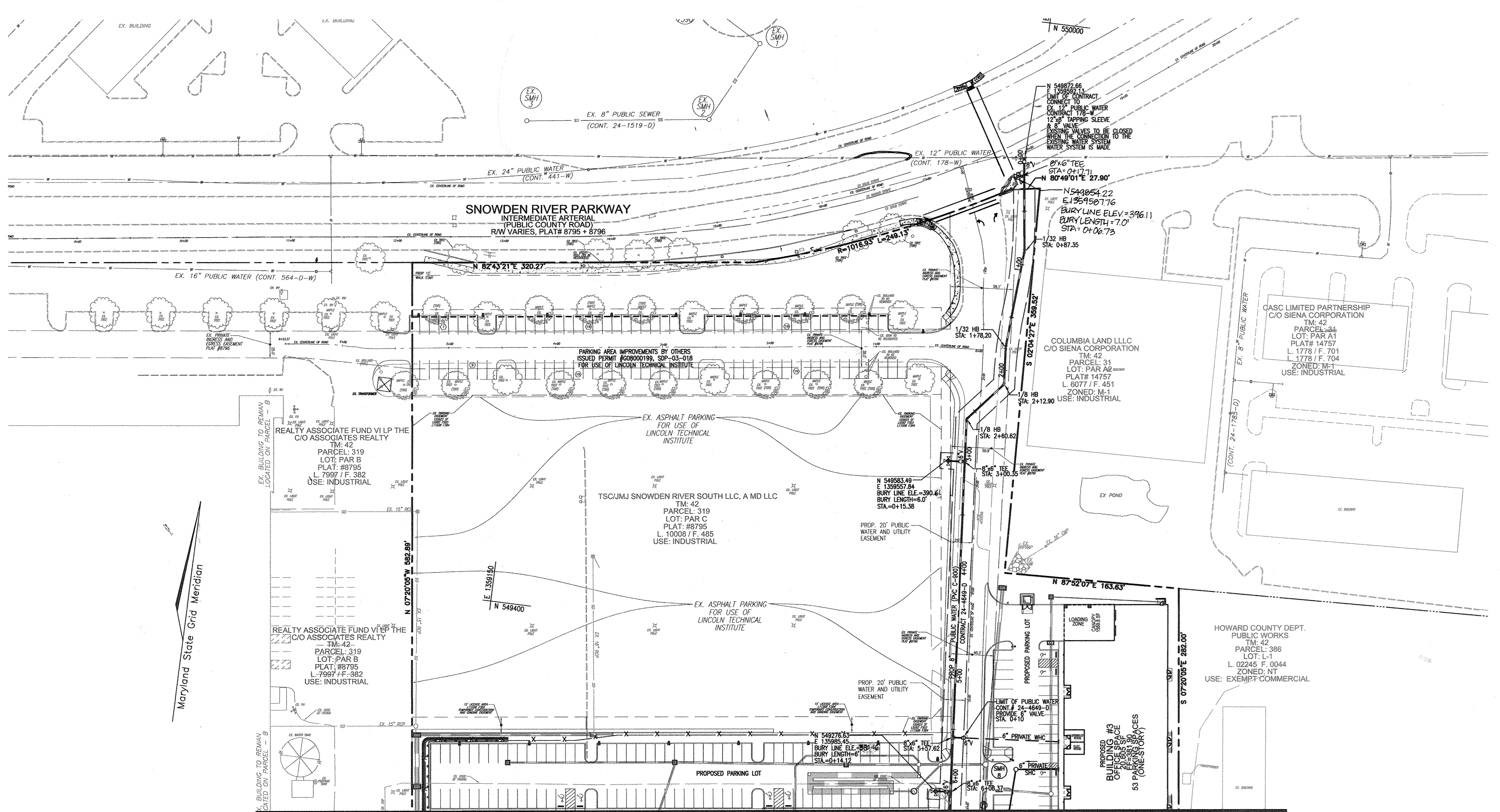
- EXISTING TREELINE
- PROPOSED TREELINE
- EXISTING WATER MAIN
- PROPOSED WATER MAIN
- FIRE HYDRANT
- PROPOSED VALVE
- PROPOSED TEE
- PROPOSED STORM DRAIN
- EXISTING STORM DRAIN
- PROPOSED PUBLIC SEWER
- EXISTING SEWER
- SEWER MANHOLE
- PRIVATE WATER
- PRIVATE SEWER
- PROPOSED SIGN
- PROPOSED LIGHT

QUANTITIES

NAME OF UTILITY CONTRACTOR :				
SURVEY AND DRAFTING DIVISION AS-BUILT DATE :				
ITEMS	QUANTITIES ESTIMATED	AS-BUILT		
		QUANTITIES	TYPE	MANUFACTURER/SUPPLIER
WATER				
2"x8" TAPPING SLEEVE & 8" VALVE	1 EA	1		Konas
8" WATER PVC (C-900)	1,104 LF		8"x20" DR-18	National
6" WATER PVC (C-900)	107 LF		6"x20" DR-18	Star Pipe
8" X 8" TEE	1 EA	3		Mueller Co.
8" VALVE	1 EA	3		Mueller Co.
6" VALVE	1 EA	4		Mueller Co.
6" FIRE HYDRANT	5 EA	4		Mueller Co.
8" X 6" TEE	7 EA	4		Star Pipe
1/8" HORIZONTAL BEND	2 EA	1		
8" CAP AND BUTTRESS	1 EA	1		Harco
SEWER				
SEWER MANHOLE	2 EA	2		Consolidated Construction Services Inc.
8" SEWER (PVC)	152 LF		SDR-35	National
8" COUPLING				
1/2" HORIZONTAL BEND				

DEVELOPER

TSC/JMJ SNOWDEN RIVER SOUTH LLC A MD LLC
8600 SNOWDEN RIVER PKWY
COLUMBIA MD 21045
410-953-0222



PUBLIC WATER MAIN (C-900 PVC)	
WATER STA.	FITTING
0+00	12"x8" TAPPING SLEEVE, 8" VALVE
0+87.35	1/32 HORIZONTAL BEND
1+78.20	1/32 HORIZONTAL BEND
2+12.90	1/8 HORIZONTAL BEND
2+60.62	1/8 HORIZONTAL BEND
3+00.33	8"x6" TEE, 6" VALVE, AND FH
5+57.62	8"x6" TEE, 6" WHC, 6" VALVE
6+08.37	8"x6" TEE, 6" VALVE, AND FH
6+73.27	8"x8" TEE, 8" WHC, 8" VALVE
6+77.25	1/32 HORIZONTAL BEND
7+41.24	1/32 HORIZONTAL BEND
8+17.80	1/32 HORIZONTAL BEND
8+38.12	8"x6" TEE, 6" VALVE, AND FH
8+89.35	8" COUPLING(0.84" UP)
9+29.59	8" COUPLING(1.05" DOWN)
10+90.73	8"x6" TEE, 6" WHC, 6" VALVE
10+99.23	8"x6" TEE, 6" VALVE, AND FH
11+63.22	8" CAP & BUTTRISS

MATCHLINE SHEET 3

PLAN VIEW
SCALE: 1"=50'

SHC	Location 1	Location 2
Building 1	SMH 4 : 44.3'	R2 : 80.7'
Building 2	SMH 5 : 107.7'	I 21 : 52.5'
Building 3	FH 2 : 54'	I 10 : 67'

VALVE	Location 1	Location 2
0+04 (8")	EFH : 27.7'	G&E Pole 474934:50.2'
3+00.35 (6" FH)	FH 3+00.35 : 14.1'	
5+57 (8" Bldg. 3)	FH 6+08.37 : 52.9'	M 13 : 26.7'
6+08.37 (6" FH)	FH 6+08.37 : 13.1'	M 13 : 27.4'
6+73.27 (8" Bldg. 1)	FH 6+08.37 : 65.8'	M 5 : 38.0'
8+38.12 (6" FH)	FH 8+38.12 : 21.4'	I 9 : 24.3'
10+92 (6" Bldg. 2)	FH 10+99.23 : 25.3'	I 7 : 80.8'
10+99.23 (6" FH)	FH 10+99.23 : 21.8'	I 7 : 74.0'

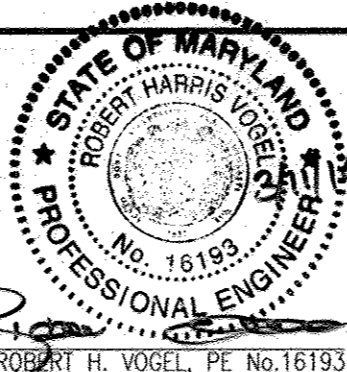
WHC	Location 1	Location 2
Bldg. 1 6+73	FH 6+08.37 : 69.7'	M 5 : 41.5'
Bldg. 2 10+92	FH 10+99.23 : 75.6'	I 7 : 74.6'
Bldg. 3 5.57	FH 6+08.37 : 98.8'	I 10 : 79.7'

DEVELOPER
TSC/JMJ SNOWDEN RIVER SOUTH LLC A MD LLC
8600 SNOWDEN RIVER PKWY
COLUMBIA MD 21045
410-953-0222

DEPARTMENT OF PUBLIC WORKS
HOWARD COUNTY, MARYLAND
Sally C. Gen 10/31/14
CHIEF, BUREAU OF UTILITIES

DEPARTMENT OF PLANNING & ZONING
HOWARD COUNTY, MARYLAND
Chad Chandler 11-6-14
CHIEF, DEVELOPMENT ENGINEERING DIVISION

ROBERT H. VOGEL ENGINEERING, INC.
ENGINEERS • SURVEYORS • PLANNERS
8407 MAIN STREET TEL: 410.461.7666
ELLCOTT CITY, MD 21043 FAX: 410.461.8961



PROFESSIONAL CERTIFICATE
I HEREBY CERTIFY THAT THESE DOCUMENTS
WERE PREPARED OR APPROVED BY ME AND
THAT I AM A DAILY LICENSED PROFESSIONAL
ENGINEER UNDER THE LAWS OF THE STATE
OF MARYLAND LICENSE NO. 16193
EXPIRATION DATE: 09-27-2014

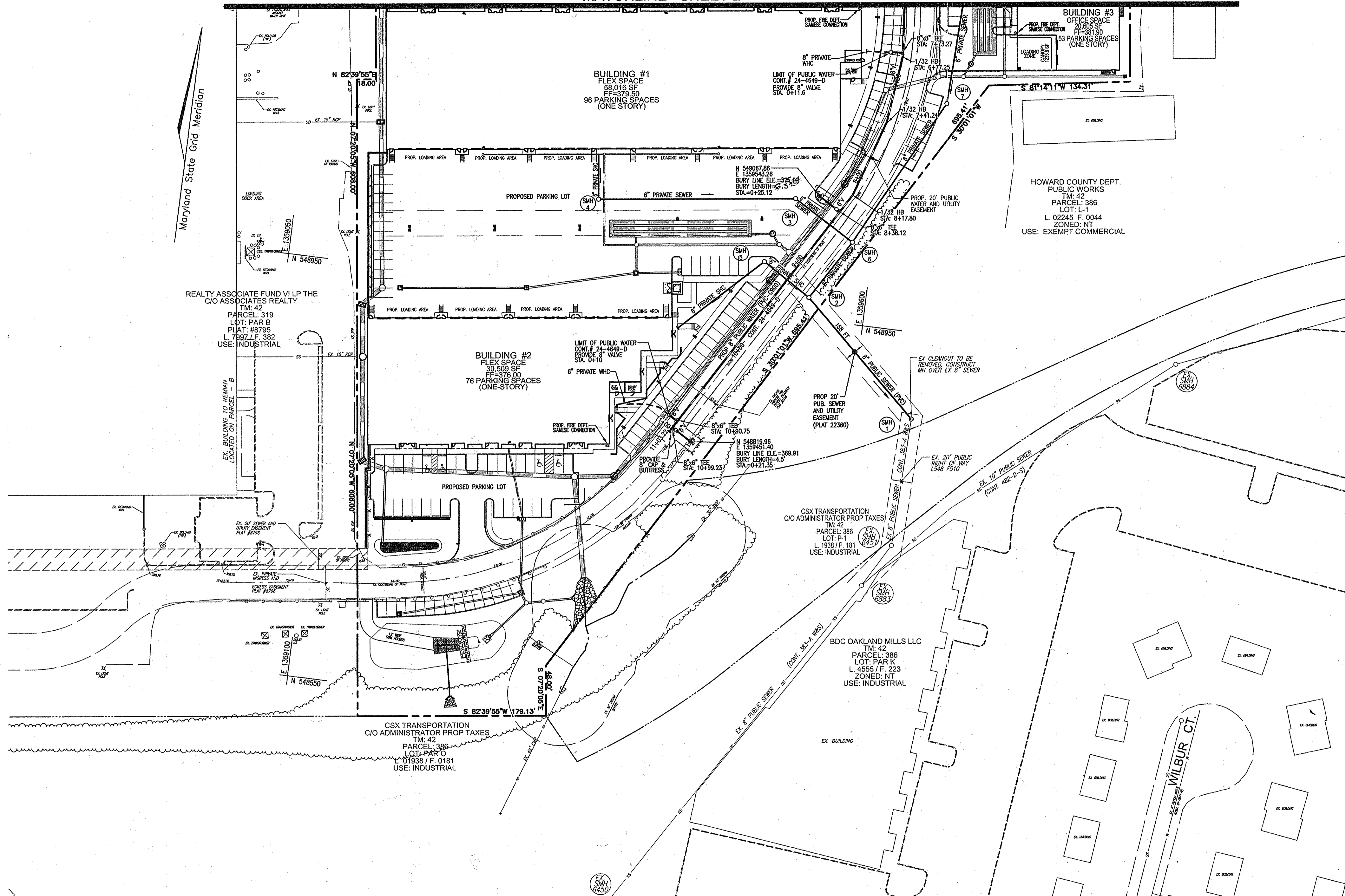
DES:	DRN:	CHK:	DATE:	NO.	REVISION	DATE
DZ	JER/DZ	RHV	JANUARY 2014	3	RELOCATE FIRE HYDRANT AT SNOWDEN RIVER PARKWAY REVISED WATER MAIN MATERIAL FROM DIP TO CRODPPVC, AND ADJUSTED SITE LAYOUT	02/12/14
					REVISION	

**FINAL WATER & SEWER PLAN
PLAN VIEW**
600' SCALE MAP NO. 42
BLOCK NO. 10

**MIDWAY BUSINESS CENTER
SNOWDEN RIVER PARKWAY
PARCEL C
CONTRACT 24-4649-D**
TAX MAP 42 GRID 10
6TH ELECTION DISTRICT
PARCEL 319
HOWARD COUNTY, MARYLAND

SCALE AS SHOWN
SHEET 2 OF 4

MATCHLINE SHEET 2



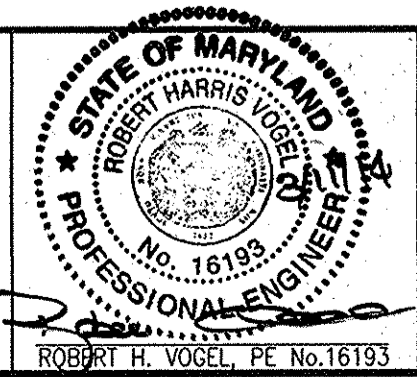
PLAN VIEW
SCALE: 1"=50'

PUBLIC SANITARY SEWER STRUCTURE SCHEDULE						
NO.	TYPE	LOCATION	TOP ELEV.	INV. IN	INV. OUT	COMMENTS
SMH-1	4'-0" STANDARD PRECAST MANHOLE (TYPE A)	N 548867.21 E 1359657.37	369.16	365.33	365.23	HO. CO. STANDARD G-5.12
SMH-2	4'-0" STANDARD PRECAST MANHOLE (TYPE A)	N 548970.37 E 1359546.18	371.16	366.13	366.09	HO. CO. STANDARD G-5.12

DEPARTMENT OF PUBLIC WORKS
HOWARD COUNTY, MARYLAND

DEPARTMENT OF PLANNING & ZONING
HOWARD COUNTY, MARYLAND

ROBERT H. VOGEL ENGINEERING, INC.
ENGINEERS • SURVEYORS • PLANNERS
8407 MAIN STREET TEL: 410.461.7666
ELICOTT CITY, MD 21043 FAX: 410.461.8961



PROFESSIONAL CERTIFICATE I HEREBY CERTIFY THAT THESE DOCUMENTS WERE PREPARED OR APPROVED BY ME, AND THAT I AM A DULY LICENSED PROFESSIONAL ENGINEER UNDER THE LAWS OF THE STATE OF MARYLAND LICENSE NO. 15193 EXPIRES DATE 10-27-2014	
DES:	DZ
DRN:	JER/DZ
CHK:	RHV 2 (RHV)
DATE:	JANUARY 2014
NO.	
REVISION	REVISED WATER MAIN MATERIAL FROM DIP TO CS900PVC, AND ADJUSTED SITE LAYOUT
DATE	02/12/14

FINAL WATER & SEWER PLAN
PLAN VIEW

MIDWAY BUSINESS CENTER
SNOWDEN RIVER PARKWAY
PARCEL C
CONTRACT 24-4649-D

DEVELOPER
TSC/JMJ SNOWDEN RIVER SOUTH LLC A MD LLC
8600 SNOWDEN RIVER PKWY
COLUMBIA MD 21C45
410-953-0222

SCALE AS SHOWN

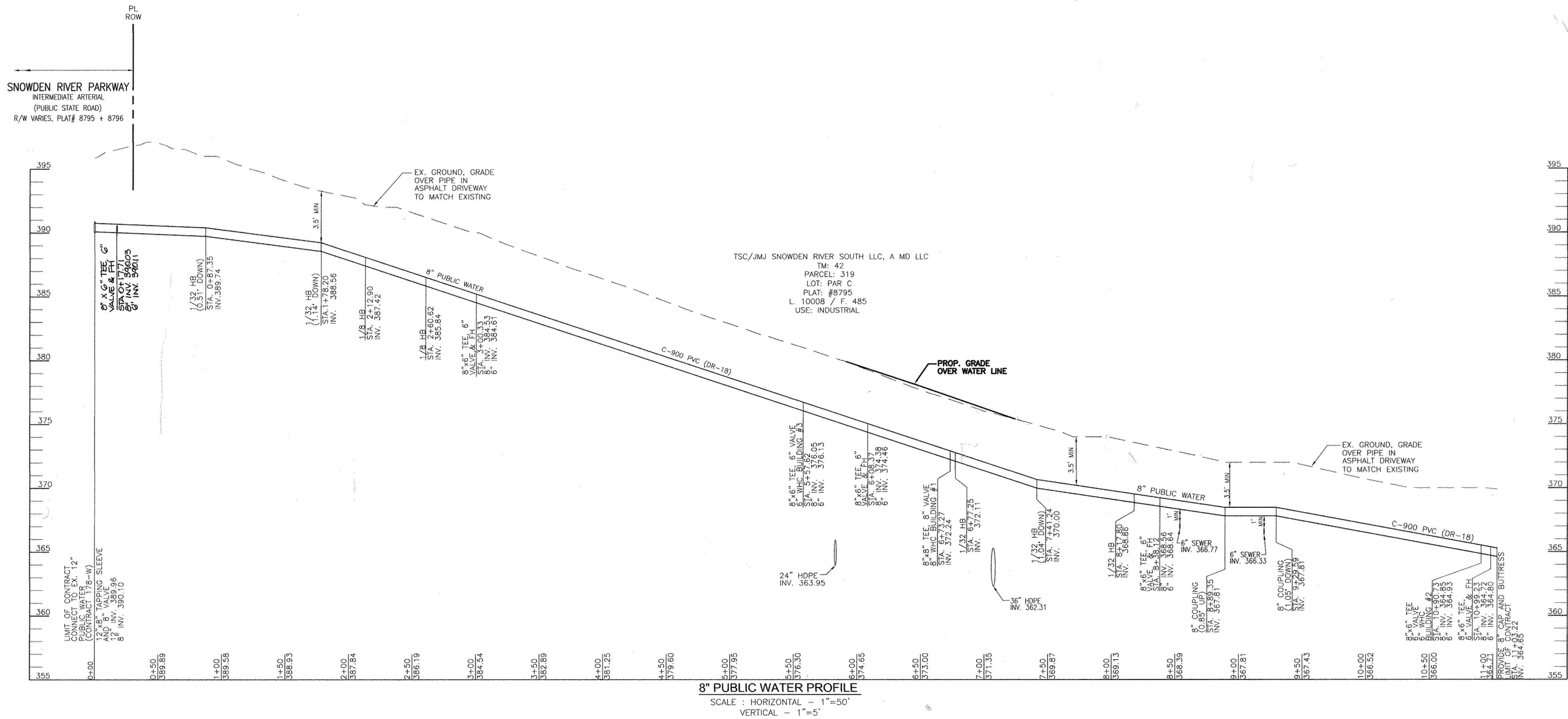
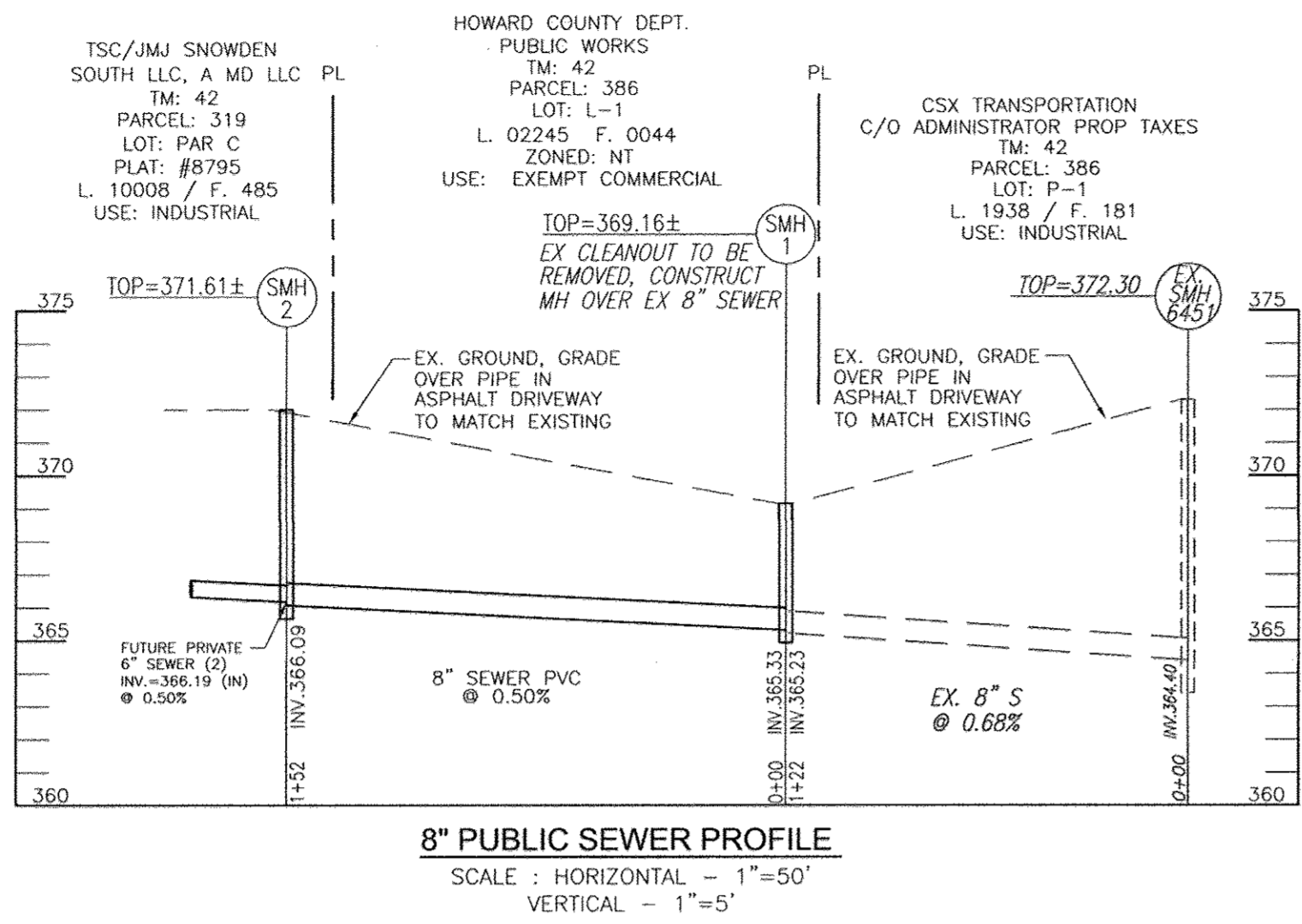
SHEET 3 OF 4

TAX MAP 42 GRID 10
6TH ELECTION DISTRICT
PARCEL 319
HOWARD COUNTY, MARYLAND

CHIEF, BUREAU OF UTILITIES
DATE

CHIEF, DEVELOPMENT ENGINEERING DIVISION
DATE

600' SCALE MAP NO. 42 BLOCK NO. 10



DEVELOPER
 TSC/JMJ SNOWDEN RIVER SOUTH LLC A MD LLC
 8600 SNOWDEN RIVER PKWY
 COLUMBIA MD 21045
 410-953-0222

DEPARTMENT OF PUBLIC WORKS
 HOWARD COUNTY, MARYLAND

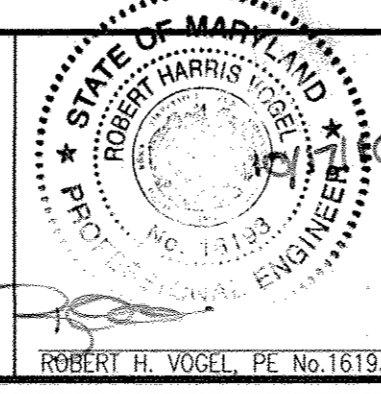
Steve Green
 CHIEF, BUREAU OF UTILITIES

DEPARTMENT OF PLANNING & ZONING
 HOWARD COUNTY, MARYLAND

Chad Edwards
 CHIEF, DEVELOPMENT ENGINEERING DIVISION

11.6.14
 M.G.

ROBERT H. VOGEL ENGINEERING, INC.
 ENGINEERS • SURVEYORS • PLANNERS
 8407 MAIN STREET TEL: 410.461.7666
 ELLICOTT CITY, MD 21043 FAX: 410.461.8961



PROFESSIONAL CERTIFICATE
 I HEREBY CERTIFY THAT THESE DOCUMENTS
 WERE PREPARED OR APPROVED BY ME, AND
 THAT I AM A DULY LICENSED PROFESSIONAL
 ENGINEER UNDER THE LAWS OF THE STATE
 OF MARYLAND, LICENSE NO. 16193
 EXPIRATION DATE: 02-27-2014

DES: DZ
 DRN: JER/DZ 3
 CHK: RHV 2 (REV)
 DATE: JANUARY 2014 NO. REVISION DATE

NO.	3	6/14/16
NO.	2 (REV)	02/12/14
NO.		
NO.		

**FINAL WATER & SEWER PLAN
 WATER & SEWER PROFILES**

RELOCATE FIRE HYDRANT AT SNOWDEN RIVER PKWY
 REVISED WATER MAIN MATERIAL FROM DIP TO C900PVC,
 AND ADJUSTED SITE LAYOUT

600' SCALE MAP NO. 42 BLOCK NO. 10

**MIDWAY BUSINESS CENTER
 SNOWDEN RIVER PARKWAY
 PARCEL C
 CONTRACT 24-4649-D**

TAX MAP 42 GRID 10
 6TH ELECTION DISTRICT

PARCEL 319
 HOWARD COUNTY, MARYLAND

SCALE AS SHOWN
 SHEET 4 OF 4