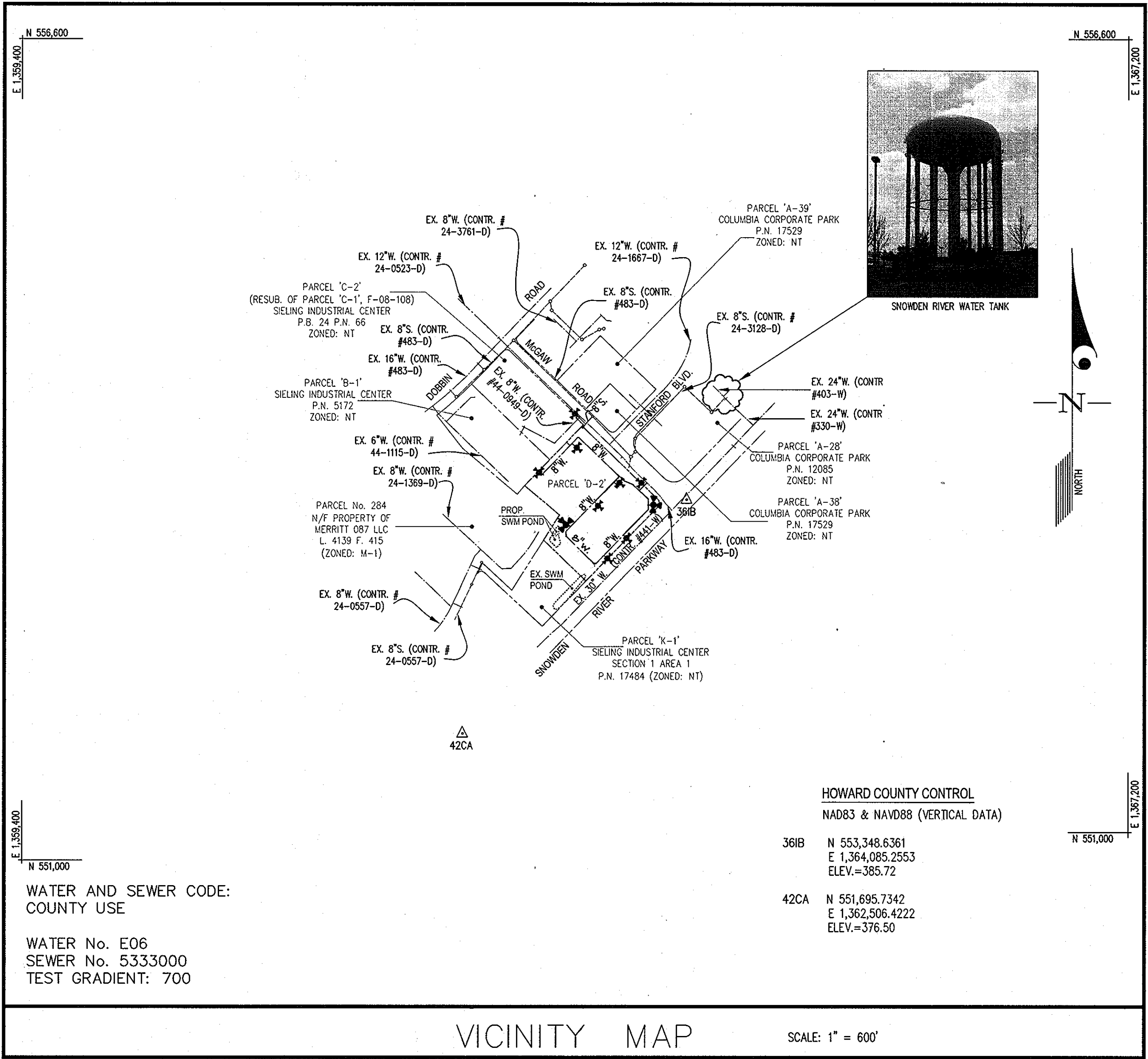
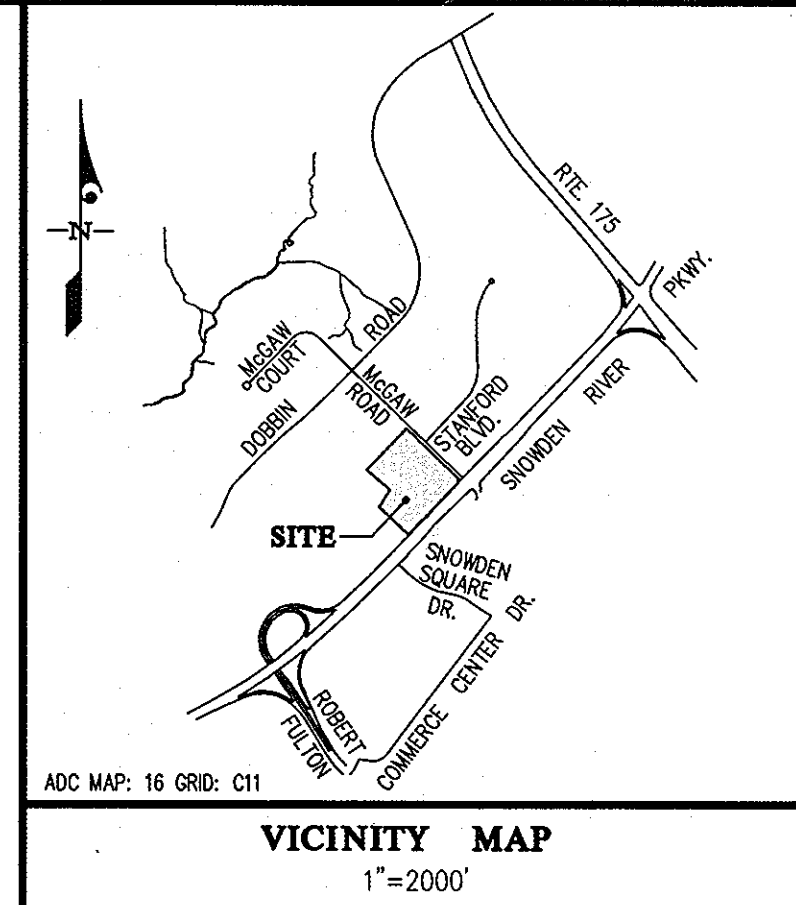


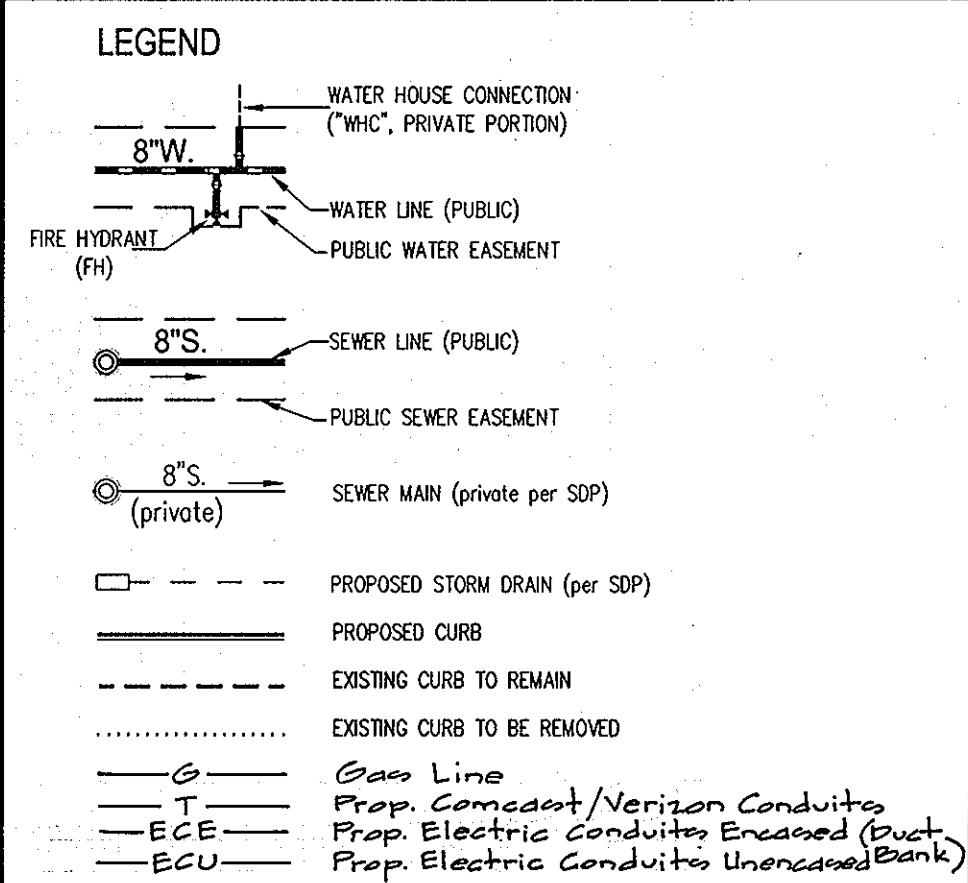
ITEMS	QUANTITIES ESTIMATED	AS-BUILT		
		QUANTITIES	TYPE	MANUFACTURER/SUPPLIER
4" SEWER MANHOLE	1 EA.	1 EACH	SMH	Fred. re. PRECAST
8" SEWER MAIN P.V.C.	84 LF.	97'	54-35	NORTH AMERICAN PIPE CO. & FERROUSON
8" WATER	2,736 LF		CLS4 DIF	GRIFFEN PIPE
6" WATER	178 LF		CLS4 DIF	GRIFFEN PIPE
10" SD REDUCER	1 EA	1 EACH		TYLER UNION BOUNDARY
8" SD TEE	5 EA			TYLER UNION BOUNDARY
8" VALVE	7 EA	1 EACH	A-2360-23	MULLERS
8" 1/8 HB	2 EA			TYLER UNION BOUNDARY
8" 1/16 HB	2 EA			TYLER UNION BOUNDARY
8" FHT AND VALVE	10 EA			TYLER UNION BOUNDARY
Fire hydrants	10 ea	10 EA	MULLER	DELAER ROAD SUPPLY
8" x 6" TSV	1 ea	1	5-5 661-663	SMITH & BLAIR / CLAMP & COUPLING PRODUCTS
NAME OF UTILITY CONTRACTOR: MOLFORD CONSTRUCTION COMPANY INC.				
SURVEY AND DRAFTING DIV.		CHECKBOX: AS-BUILT DATE:		

TYPE OF BUILDING	1 COMMERCIAL BLDG. & 1 PARKING GARAGE
NUMBER OF UNITS	1
NUMBER OF S.H.C.'s	1
NUMBER OF W.H.C.'s	1
AREA OF COMMERCIAL LOT/PARCEL	12.2± AC.
SEWER SHED	LITTLE PATUXENT
PUMPING STATION	N/A



- GENERAL NOTES**
- PART I**
- APPROXIMATE LOCATIONS OF EXISTING MAINS ARE SHOWN; THE CONTRACTOR SHALL TAKE ALL NECESSARY PRECAUTIONS TO PROTECT EXISTING MAINS AND SERVICES AND MAINTAIN UNINTERRUPTED SERVICE. ANY DAMAGE INCURRED SHALL BE REPAIRED IMMEDIATELY TO THE SATISFACTION OF THE ENGINEER AT THE CONTRACTOR'S EXPENSE.
 - TOPOGRAPHY AND FEATURES WERE DERIVED FROM AVAILABLE PUBLIC RECORDS AND FROM SURVEY BY GUTSCHICK, LITTLE & WEBER, P.A. DONE IN FEBRUARY, 2005.
 - HORIZONTAL AND VERTICAL SURVEY CONTROLS:
THE COORDINATES SHOWN ON THE DRAWINGS ARE BASED ON MARYLAND STATE REFERENCE SYSTEM NAD '83/'91 AS PROJECTED BY HOWARD COUNTY GEODETIC CONTROL STATIONS No. 361B AND 42CA.
 - ALL VERTICAL CONTROLS ARE BASED ON NAVD '88. VERTICAL CONTROLS PROVIDED ON DRAWINGS ARE 361B AND 42CA.
 - ALL PIPE ELEVATIONS SHOWN ARE INVERT ELEVATIONS UNLESS OTHERWISE NOTED ON THE PLANS.
 - CLEAR ALL UTILITIES BY A MINIMUM OF 12 INCHES. CLEAR ALL POLES BY 5'-0" MINIMUM OR TUNNEL AS REQUIRED UNLESS OTHERWISE NOTED. THE OWNER HAS CONTACTED THE UTILITY COMPANIES AND HAS MADE ARRANGEMENTS FOR BRACING OF POLES AS SHOWN ON THE DRAWINGS. IN THE EVENT THE CONTRACTOR'S WORK REQUIRES BRACING OF ADDITIONAL POLES, ANY COST INCURRED BY THE CONTRACTOR FOR THE BRACING OF ADDITIONAL POLES OR DAMAGES SHALL BE DEDUCTED FROM MONIES OWED THE CONTRACTOR. THE CONTRACTOR SHALL COORDINATE WITH THE UTILITY COMPANIES TO SCHEDULE THE BRACING OF THE POLES.
 - FOR DETAILS NOT SHOWN ON THE DRAWING, AND FOR MATERIALS AND CONSTRUCTION METHODS, USE HOWARD COUNTY DESIGN MANUAL, VOLUME IV, STANDARD SPECIFICATIONS AND DETAILS FOR CONSTRUCTION (LATEST EDITION). THE CONTRACTOR SHALL HAVE A COPY OF VOLUME IV ON THE JOB.
 - WHERE TEST PITS HAVE BEEN MADE ON EXISTING UTILITIES, THEY ARE NOTED BY THE SYMBOL \diamond AT THE LOCATIONS OF THE TEST PITS. A NOTE OR NOTES CONTAINING THE RESULTS OF THE TEST PIT OR PITS IS INCLUDED ON THE DRAWINGS. EXISTING UTILITIES IN THE VICINITY OF THE PROPOSED WORK FOR WHICH TEST PITS HAVE NOT BEEN DUG SHALL BE LOCATED BY THE CONTRACTOR TWO WEEKS IN ADVANCE OF CONSTRUCTION OPERATIONS AT HIS OWN EXPENSE.
 - THE CONTRACTOR SHALL NOTIFY THE FOLLOWING UTILITY COMPANIES OR AGENCIES AT LEAST FIVE WORKING DAYS BEFORE STARTING WORK ON THESE PLANS:

AT&T	1-800-252-1133
BGE (CONTRACTOR SERVICES)	410-850-4620
BGE (UNDER GROUND DAMAGE CONTROL)	410-685-1400
BUREAU OF UTILITIES	410-313-4900
COLONIAL PIPELINE CO.	410-795-1390
MISS UTILITY	1-800-257-7777
STATE HIGHWAY ADMINISTRATION	410-531-5533
VERIZON	1-800-743-0033 / 410-224-9210
 - TREES AND SHRUBS ARE TO BE PROTECTED FROM DAMAGE TO THE MAXIMUM EXTENT. TREES AND SHRUBS LOCATED WITHIN THE CONSTRUCTION AREA STRIP ARE NOT TO BE REMOVED OR DAMAGED BY THE CONTRACTOR.
 - THE CONTRACTOR SHALL REMOVE TREES, STUMPS AND ROOTS ALONG THE LINE OF EXCAVATION. PAYMENT FOR SUCH REMOVAL SHALL BE INCLUDED IN THE UNIT PRICE BID FOR CONSTRUCTION OF THE MAIN.
 - THE CONTRACTOR SHALL NOTIFY THE BUREAU OF HIGHWAYS, HOWARD COUNTY, AT (410)-313-7450 AT LEAST FIVE WORKING DAYS BEFORE OPEN CUTTING OR BORING/JACKING OF ANY COUNTY ROAD FOR LAYING WATER/SEWER MAINS OR HOUSE CONNECTIONS. THE APPROVAL OF THESE DRAWINGS WILL CONSTITUTE COMPLIANCE WITH DPW REQUIREMENTS PER SECTION 18.114(a) OF THE HOWARD COUNTY CODE.
- PART II - WATER**
- ALL MAINS SHALL BE D.I.P. CLASS 54 UNLESS OTHERWISE NOTED.
 - TOPS OF ALL WATER MAINS SHALL HAVE A MINIMUM OF 3'-6" OF COVER UNLESS OTHERWISE NOTED.
 - VALVES ADJACENT TO TEES SHALL BE STRAPPED TO TEES.
 - ALL FITTINGS SHALL BE BUTTRESSED OR ANCHORED WITH CONCRETE IN ACCORDANCE WITH STANDARD DETAILS UNLESS OTHERWISE PROVIDED FOR ON THE DRAWINGS.
 - FIRE HYDRANTS SHALL BE SET TO THE BURY LINE ELEVATIONS SHOWN ON THE DRAWINGS. ALL FIRE HYDRANTS SHALL BE INSTALLED IN ACCORDANCE WITH STANDARD DETAILS. THE SOIL AROUND THE FIRE HYDRANT SHALL BE COMPACTED IN ACCORDANCE WITH SECTION 1000 AND SECTION 1005 OF THE STANDARD SPECIFICATIONS.
 - THE CONTRACTOR SHALL NOT OPERATE ANY WATER MAIN VALVES ON THE EXISTING WATER SYSTEM.
 - ALL WATER HOUSE CONNECTIONS SHALL BE FOR INSIDE METER SETTING UNLESS OTHERWISE NOTED ON PLANS OR IN SPECIFICATIONS.
 - FOR SPRINKLER SYSTEM FOR ALL TOWN HOMES OR MULTI-FAMILY DWELLING UNITS SHOULD HAVE A MINIMUM OF 1" CONNECTION WITH A 3/4" METER.
- PART III - SEWER**
- ALL SEWER MAINS SHALL BE D.I.P. OR P.V.C. UNLESS OTHERWISE NOTED.
 - ALL MANHOLES SHALL BE 4'-0" INSIDE DIAMETER UNLESS OTHERWISE NOTED.
 - FORCE MAINS SHALL BE D.I.P. ONLY.
 - MANHOLES SHOWN WITH THE 12" AND 16" WALLS ARE FOR BRICK MANHOLES ONLY.
 - MANHOLES DESIGNATED W.T. IN PLAN AND PROFILE SHALL HAVE WATERTIGHT FRAME AND COVER, STANDARD DETAIL G5.52. WHERE WATERTIGHT MANHOLE FRAMES AND COVERS ARE USED, SET TOP OF FRAME 1'-6" ABOVE FINISHED GRADE UNLESS OTHERWISE NOTED ON THE DRAWINGS.
 - HOUSE(S) WITH THE SYMBOL "C.N.S." INDICATES THE CELLAR CANNOT BE SERVED.



SHEET INDEX

- TITLE SHEET
- WATER & SEWER EXTENSION PLAN
- WATER & SEWER PROFILES

CONTRACT No. 24-4504-D
WEGMANS FOOD MARKETS
COLUMBIA SIELING INDUSTRIAL CENTER
PARCEL D-2 (redevelopment of Parcel D-1); TAX MAP PARCEL 356
SECTION 1, AREA 1; PLAT NO. 17484
HOWARD COUNTY, MARYLAND
DEPARTMENT OF PUBLIC WORKS

Sediment Control Measures will be implemented in accordance with Section 219 of the Specifications & with Site Plan Drawings SDP-07-131; Drawings for Sediment & Erosion Control.

REVIEWED FOR HOWARD SOIL CONSERVATION DISTRICT AND MEETS TECHNICAL REQUIREMENT.

SIGNATURE: *[Signature]* DATE: *[Date]*

U.S.D.A. NATURAL RESOURCES CONSERVATION SERVICE

THIS DEVELOPMENT PLAN IS APPROVED FOR SOIL EROSION AND SEDIMENT CONTROL BY THE HOWARD SOIL CONSERVATION DISTRICT.

APPROVED: *[Signature]* DATE: *[Date]*

LAND LEASE: WEGMANS FOOD MARKETS, INC. 100 WEGMANS MARKET STREET ROCHESTER, NY 14624

OWNER/DEVELOPER/LAND LEASER: SCIENCE FACTORY, LLC C/O ANTIKIPEN AUTOMOTIVE GROUP 6440 BALTIMORE NATIONAL PIKE CATONSVILLE, MD 21228

CONTACT: STEPHEN LEATY 585-464-4600 EXT. 6833 CONTACT: TIM HARRISON

PROFESSIONAL CERTIFICATION

I HEREBY CERTIFY THAT THESE PLANS WERE PREPARED OR APPROVED BY ME, AND THAT I AM A DULY LICENSED PROFESSIONAL ENGINEER UNDER THE LAWS OF THE STATE OF MARYLAND, LICENSE NO. 12975, EXPIRATION DATE: MAY 26, 2008.

[Signature] DATE: 2-9-08

DES: MBT										
DRN: kip										
CHK: CKG										
DATE: feb. 2008										
BY: NO										
REVISION	<table border="1"> <tr> <td>1</td> <td>AS-BUILT</td> <td>6-7-12</td> </tr> <tr> <td>2</td> <td>added to legend</td> <td>3/25/11</td> </tr> <tr> <td>1</td> <td>Rev. Quantities changed new water-line in vicinity map</td> <td>1/12/10</td> </tr> </table>	1	AS-BUILT	6-7-12	2	added to legend	3/25/11	1	Rev. Quantities changed new water-line in vicinity map	1/12/10
1	AS-BUILT	6-7-12								
2	added to legend	3/25/11								
1	Rev. Quantities changed new water-line in vicinity map	1/12/10								

DEPARTMENT OF PUBLIC WORKS
HOWARD COUNTY, MARYLAND

[Signature] DATE: 2/2/08
CHIEF, BUREAU OF UTILITIES

DEPARTMENT OF PLANNING AND ZONING
HOWARD COUNTY, MARYLAND

[Signature] DATE: 2/4/08
CHIEF, DEVELOPMENT ENGINEERING DIVISION

GLWGUTSCHICK LITTLE & WEBER, P.A.

CIVIL ENGINEERS, LAND SURVEYORS, LAND PLANNERS, LANDSCAPE ARCHITECTS
3909 NATIONAL DRIVE - SUITE 250 - BURTONSVILLE OFFICE PARK
BURTONSVILLE, MARYLAND 20886
TEL: 301-421-4024 BAL: 410-880-1820 DC/VA: 301-989-2524 FAX: 301-421-4186

TITLE SHEET

600' SCALE MAP NO. 36 BLOCK NO. 24

WEGMANS FOOD MARKETS
COLUMBIA SIELING INDUSTRIAL CENTER
PARCEL D-2 (redevelopment of Parcel D-1); TAX MAP PARCEL 356
SECTION 1 AREA 1
HOWARD COUNTY, MARYLAND
ELECTION DISTRICT No. 6
CONTRACT No. 24-4504-D

GLW FILE No. 07-005

SHEET AS SHOWN

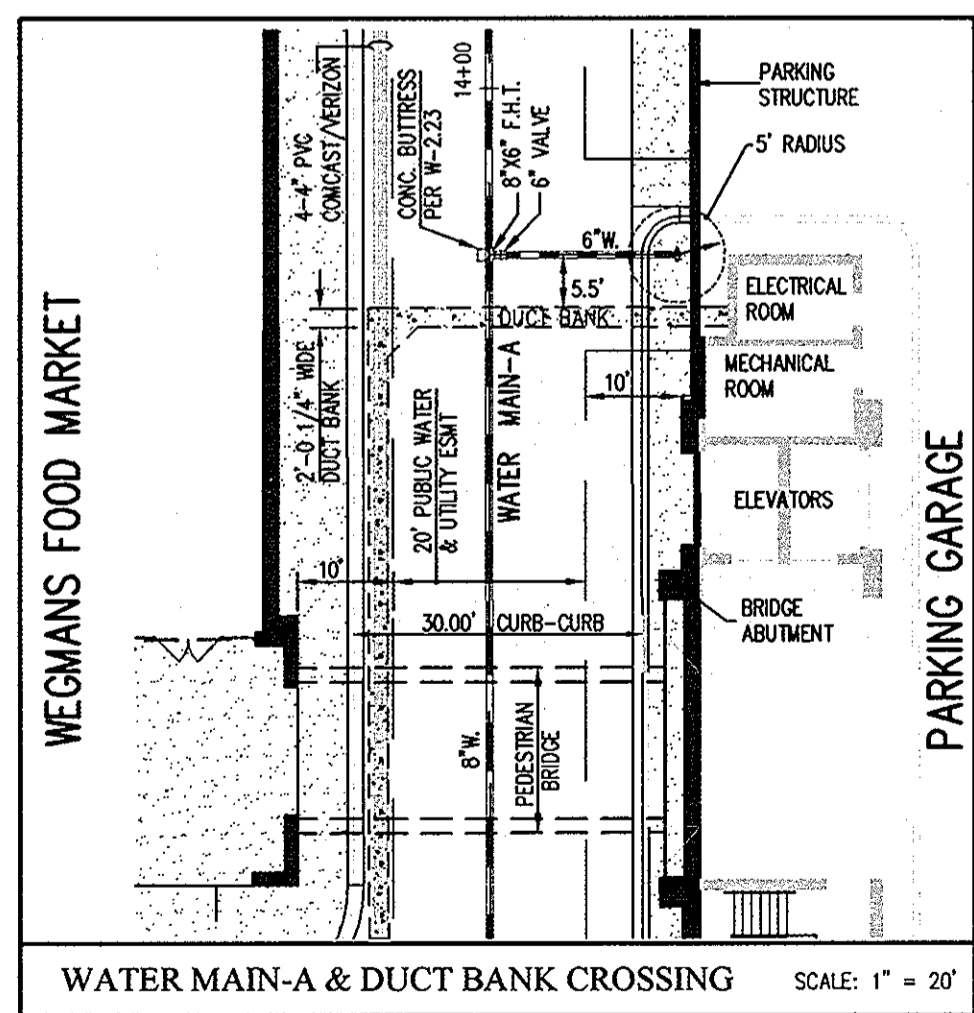
SHEET 1 OF 3

FITTING INFORMATION		
LOCATION	FITTING	NAD '27 COORDINATES
WATERLINE A		
WM STA. 0+00	10"x8" REDUCER	N 553459.6705 E 1363796.6557
WM STA. 0+13	8"x6" FHT	N 553450.6542 E 1363797.8473
WM STA. 0+67	8"x8" TEE	N 553411.5149 E 1363750.1621
WM STA. 1+54	8" 1/8 HB	N 553351.3601 E 1363812.5808
WM STA. 2+00	8"x6" FHT	N 553305.4618 E 1363813.4279
WM STA. 2+25	8" 1/8 HB	N 553280.4901 E 1363813.8887
WM STA. 4+78	8"x6" FHT	N 553098.1444 E 1363838.1516
WM STA. 6+69	8"x6" FHT	N 552960.2376 E 1363905.2428
WM STA. 7+10	CENTER OF SLEEVE	N 552930.6097 E 1363476.6886
WM STA. 7+64	8" 1/8 HB	N 552891.8819 E 1363439.3645
WM STA. 7+74	8" 1/8 HB	N 552891.8819 E 1363429.3955
WM STA. 10+52	8" 1/8 HB	N 553084.5186 E 1363229.5153
WM STA. 10+85	8" 1/8 HB	N 553118.0871 E 1363228.8958
WM STA. 11+38	8" x8" TEE	N 553155.8165 E 1363265.2579
WM STA. 13+83	8"x6" FHT	N 553332.1450 E 1363435.1964
WM STA. 16+13	8"x6" FHT	N 553489.4209 E 1363586.7227
WM STA. 16+33	8"x8" TEE	N 553512.5690 E 1363609.0819
WM STA. 20+28	8" 1/8 HB	N 553785.8231 E 1363324.8563
WM STA. 20+36	8" 1/8 HB	N 553785.8231 E 1363316.4819
WM STA. 20+93	8"x6" FHT	N 553744.5542 E 1363278.8421
WM STA. 21+13	8"x8" TEE	N 553730.1411 E 1363262.9878
WM STA. 23+72	8"x8" TEE	N 553543.39 E 1363062.844
WM STA. 24+01	8"x6" FHT	N 553022.6632 E 1363062.8344

FITTING INFORMATION		
LOCATION	FITTING	NAD '27 COORDINATES
WATERLINE B		
WM STA. 0+00	8"x8" TEE	N 553152.5690 E 1363609.0819
WM STA. 0+53	8" 1/16 HB	N 553475.7809 E 1363647.3358
WM STA. 1+18	8" 1/16 HB	N 553451.9318 E 1363708.2272
WM STA. 1+77	8"x8" TEE	N 553411.5149 E 1363750.1621

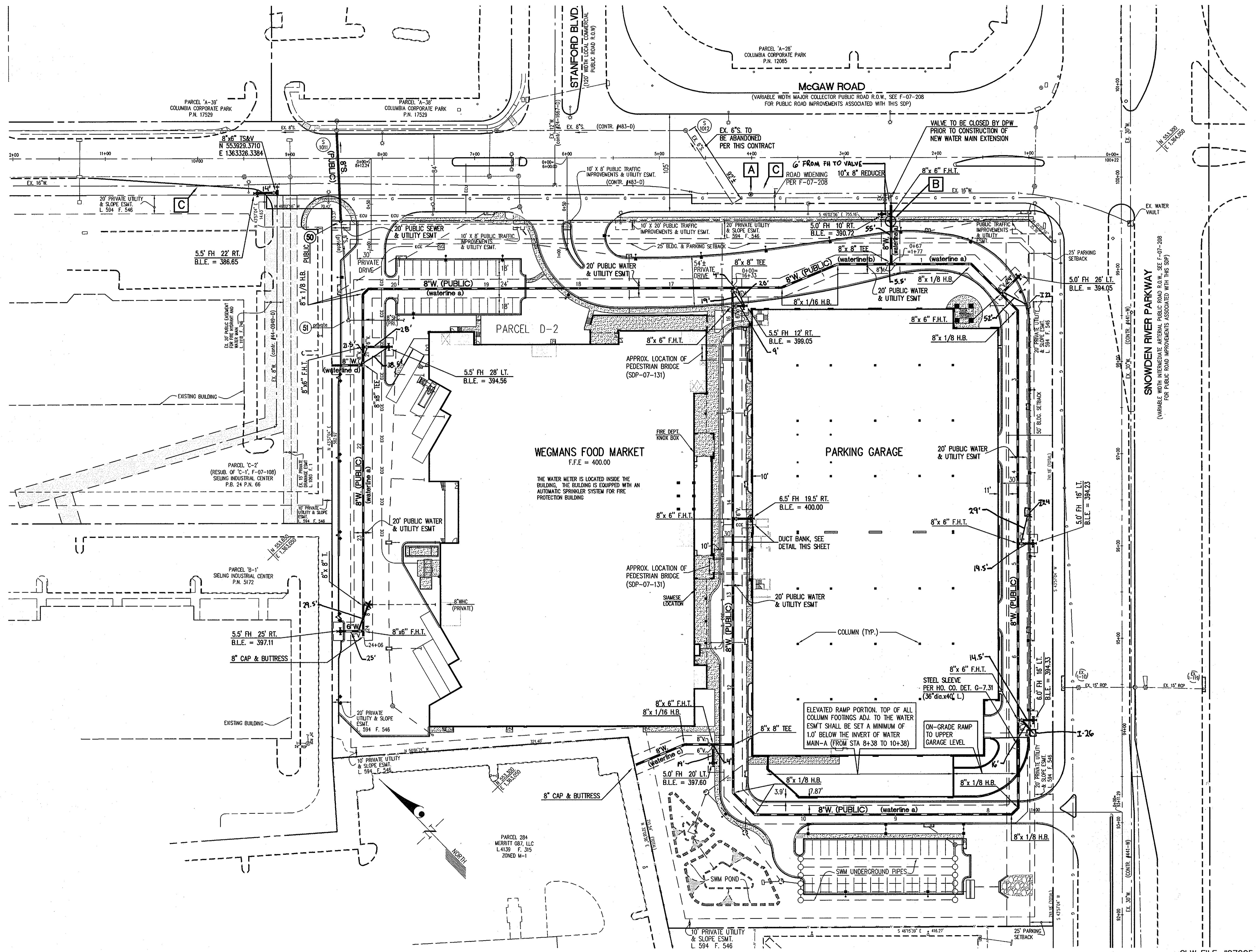
FITTING INFORMATION		
LOCATION	FITTING	NAD '27 COORDINATES
WATERLINE C		
WM STA. 0+00	8"x8" TEE	N 553155.8165 E 1363265.2579
WM STA. 0+22	8"x6" FHT	N 553170.95 E 1363249.56
WM STA. 0+53	8" 1/16 HB	N 553192.3661 E 1363227.3339
WM STA. 1+09	8" CAP	N 553213.1220 E 1363174.4873

- NOTE:**
1. EXISTING SITE TO BE DEMOLISHED PER SDP-07-131.
- A** AIR RELEASE VAULT. TO BE REMOVED OR TOP TO BE LOWERED AS DIRECTED BY THE BUREAU OF UTILITIES.
- B** EXISTING PRIVATE CONCRETE WATER MAIN VAULT AND STAND PIPE TO BE REMOVED.
- C** EXISTING FIRE HYDRANTS (2) TO BE REMOVED AND RETURNED TO DPW.



OWNER/DEVELOPER AND LEASEE:
SCIENCE FICTION, LLC
C/O ANTHEMRYN AUTOMOTIVE GROUP
6440 BALTIMORE NATIONAL PIKE
CATONSVILLE, MD 21228
CONTACT: STANFORD HESS

LAND LEASEE:
WEGMANS FOOD MARKETS, INC.
100 WEGMANS MARKET STREET
ROCHESTER, NY 14624
CONTACT: STEPHEN LEATY
585-464-4600 EXT. 6833



DEPARTMENT OF PUBLIC WORKS
HOWARD COUNTY, MARYLAND

DEPARTMENT OF PLANNING AND ZONING
HOWARD COUNTY, MARYLAND

GLWGUTSCHICK LITTLE & WEBER, P.A.
CIVIL ENGINEERS, LAND SURVEYORS, LAND PLANNERS, LANDSCAPE ARCHITECTS
3909 NATIONAL DRIVE - SUITE 250 - BURTONSVILLE OFFICE PARK
BURTONSVILLE, MARYLAND 20886
TEL: 301-421-4024 BAL: 410-860-1820 DC/VA: 301-989-2524 FAX: 301-421-4186

PROFESSIONAL CERTIFICATION
I HEREBY CERTIFY THAT THESE PLANS WERE PREPARED OR APPROVED BY ME, AND THAT I AM A DULY LICENSED PROFESSIONAL ENGINEER UNDER THE LAWS OF THE STATE OF MARYLAND, LICENSE NO. 12975, EXPIRATION DATE: MAY 26, 2012.
3-28-11



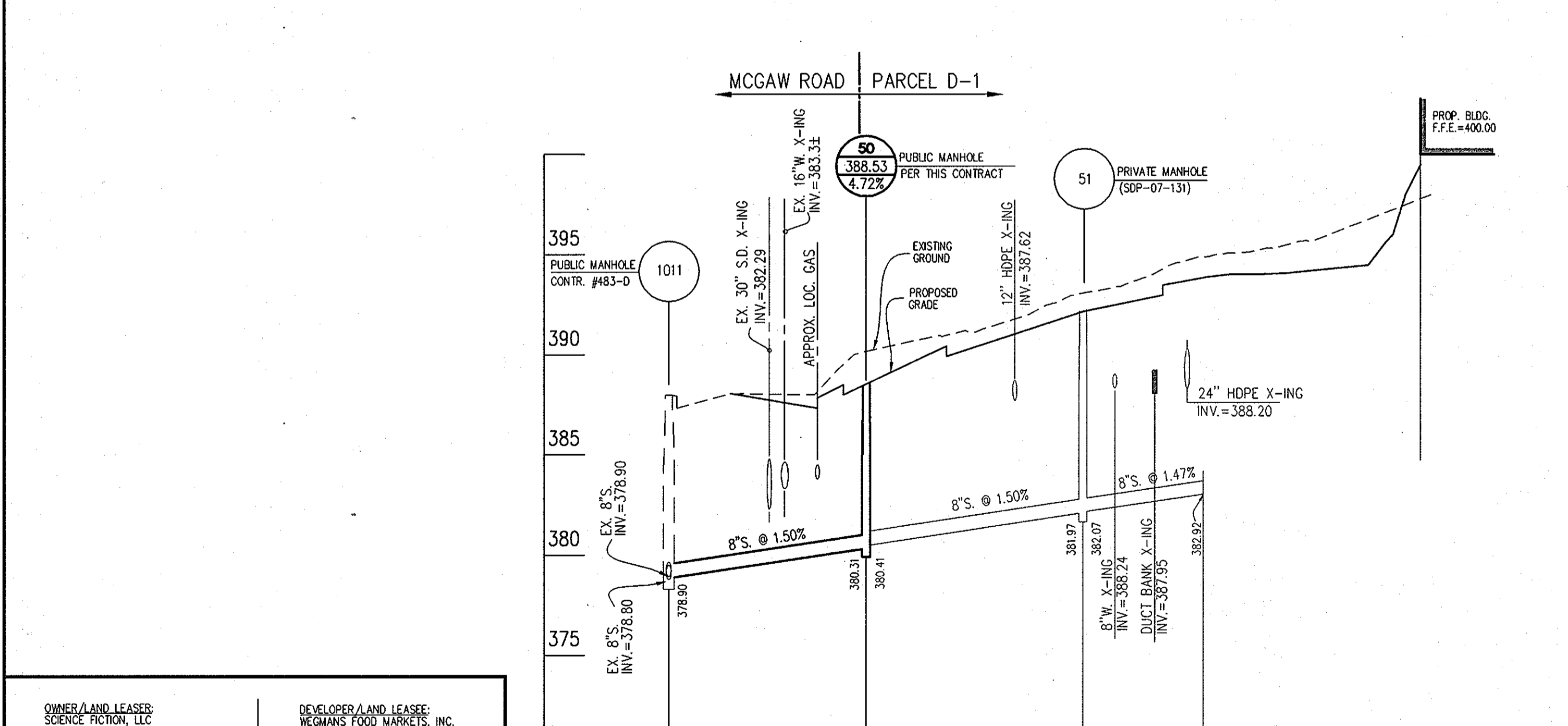
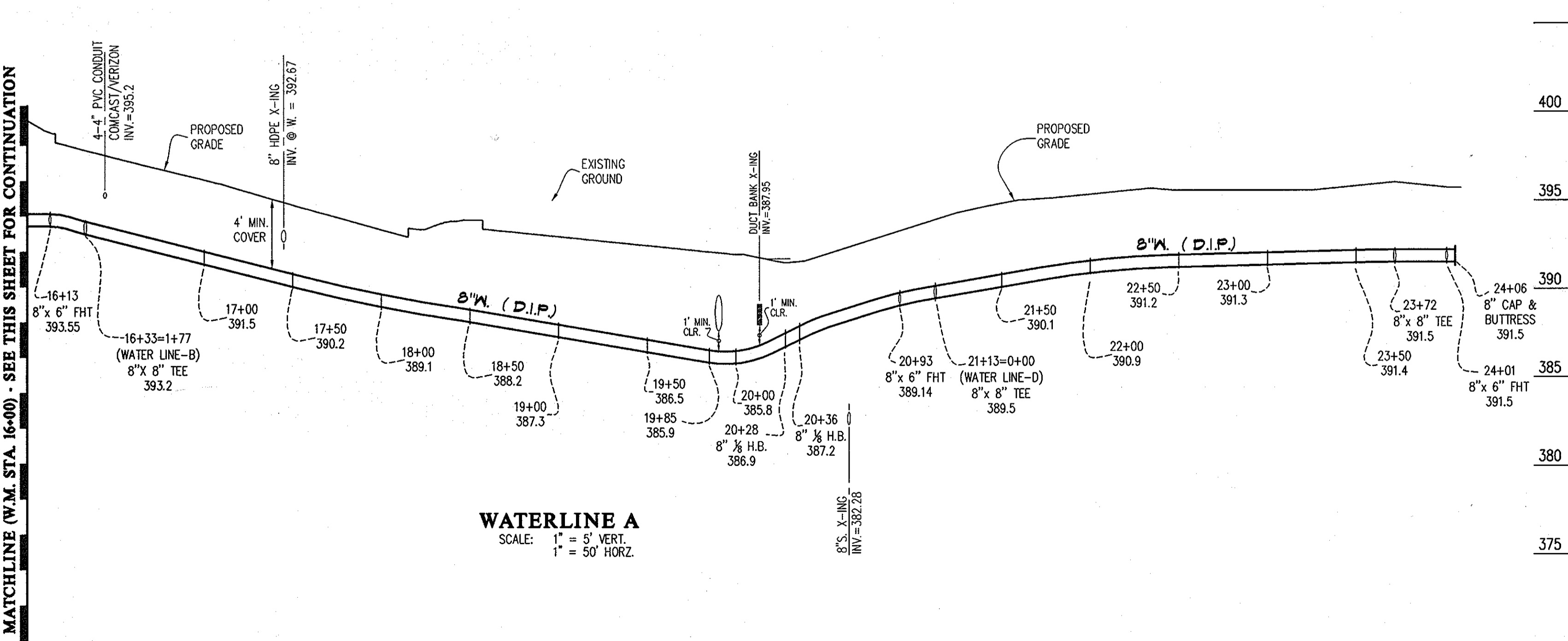
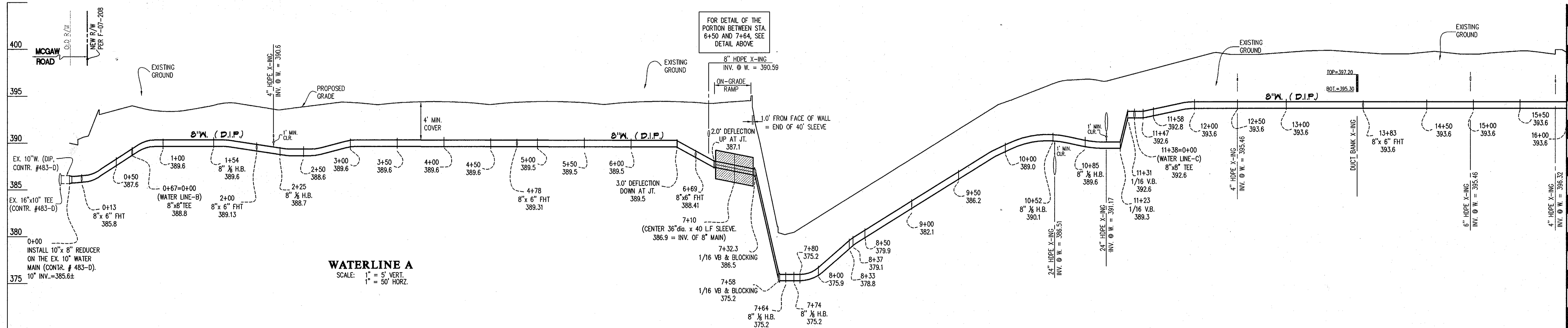
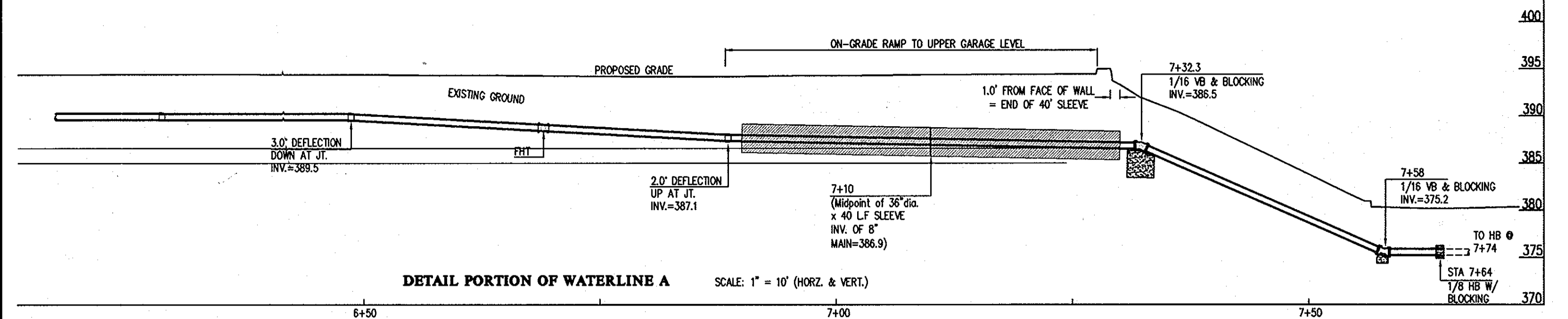
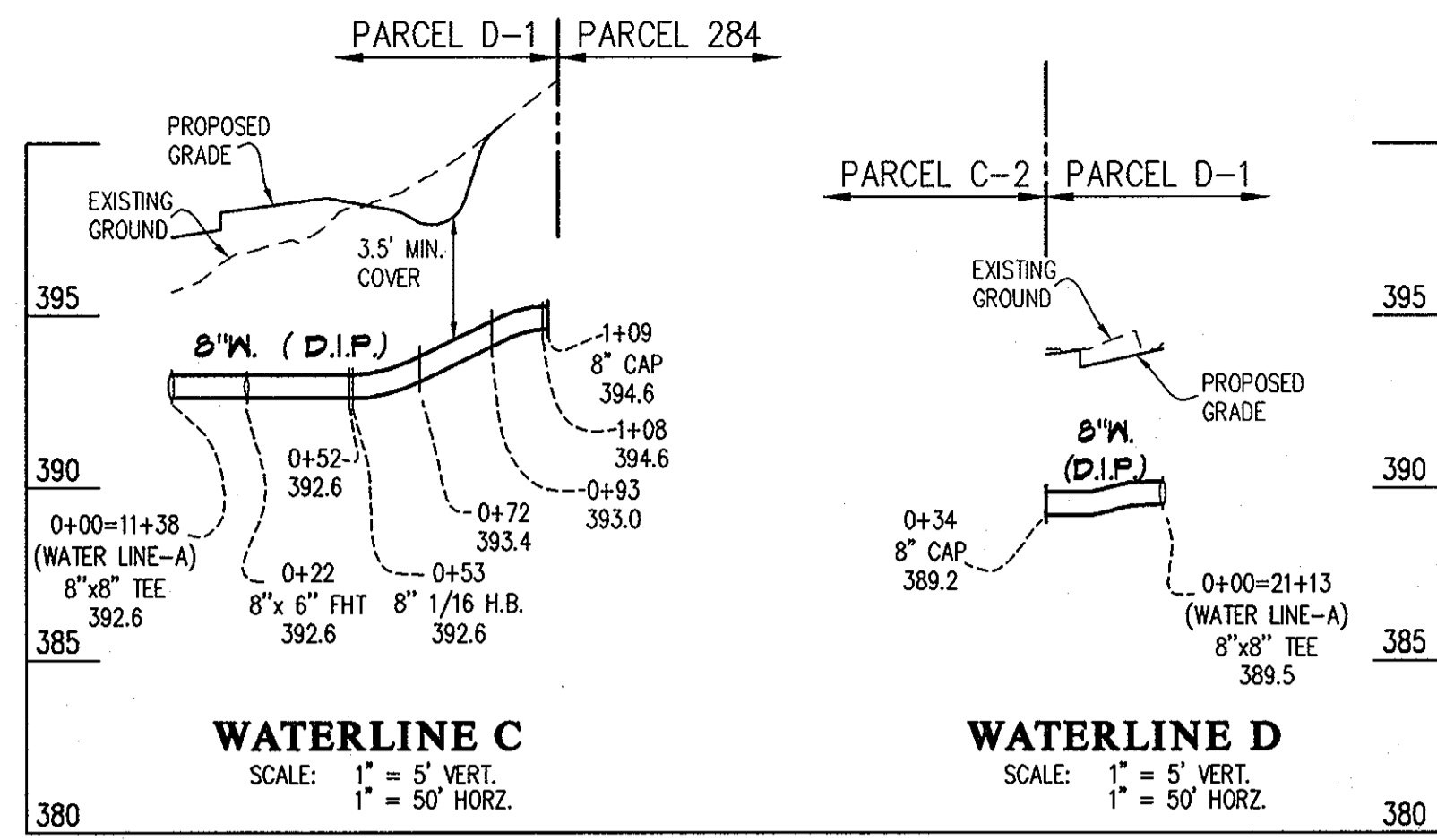
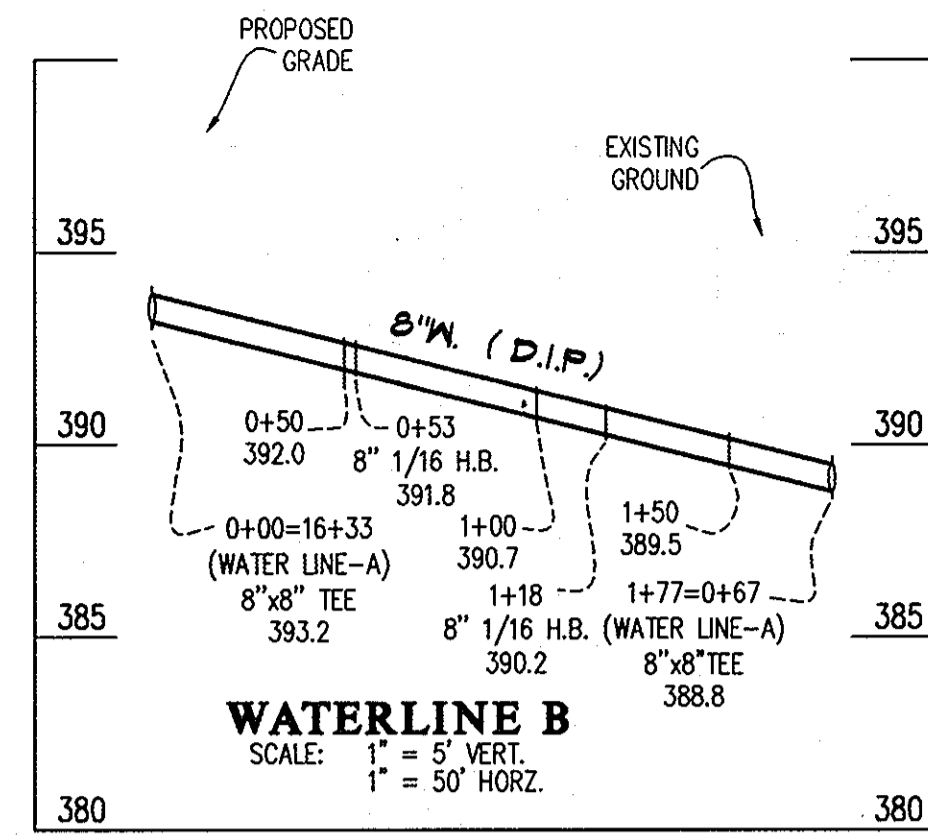
DES:	mbt		
DRN:	klp		
CHK:	ckg/mbt		
DATE:	NOV. 2009		
BY:	NO	REVISION	DATE
		1	6-7-2012
		2	3-25-2011
		3	5-4-2010

(REVISED)
WATER and SEWER EXTENSION PLAN

WEGMANS FOOD MARKETS, INC. - COLUMBIA, MD
COLUMBIA SIELING INDUSTRIAL CENTER
PARCEL D-2 (redevelopment of Parcel D-1); TAX MAP PARCEL 356
SECTION 1 AREA 1; PLAT NO. 17484
HOWARD COUNTY, MARYLAND
ELECTION DISTRICT No. 6
CONTRACT NO. 24-4504-D

SCALE
1"=50'
SHEET
2 OF 3

GLW FILE #07005

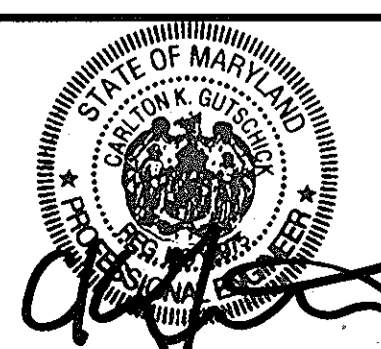


DEPARTMENT OF PUBLIC WORKS
HOWARD COUNTY, MARYLAND

DEPARTMENT OF PLANNING AND ZONING
HOWARD COUNTY, MARYLAND

GLWGUTSCHICK LITTLE & WEBER, P.A.
CIVIL ENGINEERS, LAND SURVEYORS, LAND PLANNERS, LANDSCAPE ARCHITECTS
3909 NATIONAL DRIVE - SUITE 250 - BURTONSVILLE OFFICE PARK
BURTONSVILLE, MARYLAND 20866
TEL: 301-421-4024 BALT: 410-860-1820 DC/VA: 301-993-2524 FAX: 301-421-4186

PROFESSIONAL CERTIFICATION
I HEREBY CERTIFY THAT THESE PLANS WERE PREPARED OR APPROVED BY ME, AND THAT I AM A DULY LICENSED PROFESSIONAL ENGINEER UNDER THE LAWS OF THE STATE OF MARYLAND, LICENSE NO. 12375.
EXPIRATION DATE: MAY 26, 2012



DES: mbt
DRN: klp
CHK: ckg/mbt
DATE: NOV, 2009

OWNER/LAND LEASER:
SCIENCE FACTORY, LLC
C/O ANTWERPEN AUTOMOTIVE GROUP
6440 BALTIMORE NATIONAL PIKE
CATONSVILLE, MD 21228
CONTACT: STANFORD HESS

DEVELOPER/LAND LEASER:
WEGMANS FOOD MARKETS, INC.
100 WEGMANS MARKET STREET
ROCHESTER, NY 14624
CONTACT: STEPHEN LEATY
585-464-4600 EXT. 6833

(REVISED)
WATER and SEWER EXTENSION PROFILES

WEGMANS FOOD MARKETS, INC. - COLUMBIA, MD
COLUMBIA SIELING INDUSTRIAL CENTER
PARCEL D-2 (redevelopment of Parcel D-1); TAX MAP PARCEL 356
SECTION 1 AREA 1; PLAT No. 17484
HOWARD COUNTY, MARYLAND
ELECTION DISTRICT No. 6
CONTRACT No. 24-4504-D

SCALE AS SHOWN
SHEET 3 OF 3

MATCHLINE (W.M. STA. 16+00) - SEE THIS SHEET FOR CONTINUATION

MATCHLINE (W.M. STA. 16+00) - SEE THIS SHEET FOR CONTINUATION

GLW FILE #07005

600' SCALE MAP NO. 36 BLOCK NO. 24