

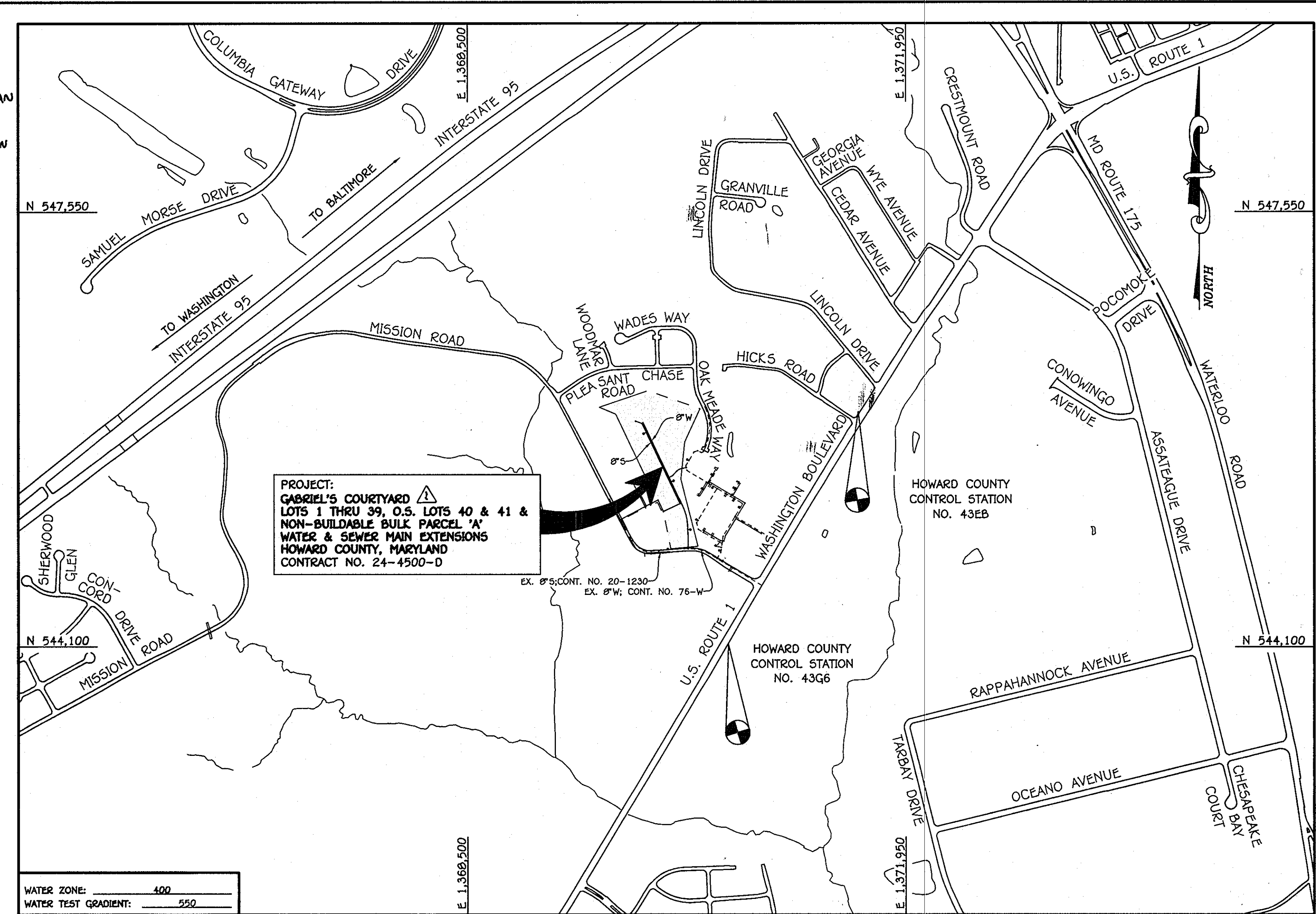
QUANTITIES				
ITEM	ESTIMATED	QUANTITIES	AS-BUILT	SUPPLIER
8" SEWER	1,127 L.F.		SOR-35	NO SUPPLY/ALONG
4" SEWER	1,178 L.F.		"	"
MANHOLES	6 EACH		SMH	ATLANTIC COAK & E
8" WATER	1,268 L.F.		DR. 18 COO	NO SUPPLY/NOR
6" WATER	74 L.F.		"	"
1-1/2" WATER	637 L.F.		COPPER	" / HOWELL
1/8" H.B.	1 EACH		MS BOX	" / TYLER
1/16" H.B.	2 EACH		"	"
1/32" H.B.	3 EACH		"	"
2" H.B.	1 EACH		"	"
8" X 8" TAPPING SLEEVE	1 EACH		TAPPING SLEEVE	" / FORD METER BOX
8" TAPPING VALVE	1 EACH		TAPPING VALVE	" / KENNEDY VALVE
8" X 8" TEE	1 EACH		MS BOX	" / TYLER
8" X 8" TEE	3 EACH		MS BOX	" / TYLER
8" VALVE	2 EACH		GATE VALVE	" / KENNEDY VALVE
8" VALVE	3 EACH		GATE VALVE	" / TYLER
FIRE HYDRANT	3 EACH		GATE VALVE	" / TYLER
8" PLUG & BUTTRESS	1 EACH		METALUG	" / ROAD METER BOX
CONTINUITY TEST STATION	3 EACH		"	"
SINGLE OUTSIDE METER SETTING	3 EACH		SINGLE SETTER	BY McDONALD
PLAN OUTSIDE METER SETTING	19 EACH		PLAN SETTER	BY McDONALD
NAME OF UTILITY CONTRACTOR: HCS				
SURVEY & DRAFTING DIVISION AS-BUILT DATE:				

**BENCHMARK INFORMATION**

B.M.#1 - HOWARD COUNTY CONTROL STATION NO. 4325 (NAD '83)  
 (LOCATED ALONG THE WEST SIDE OF U.S. ROUTE 1, APPROX. 8' OFF THE EDGE OF PAVING & APPROX. 78' NORTH FROM THE CENTERLINE OF HICKS ROAD)  
 N 545,963.652  
 E 1,371,573.840  
 ELEVATION = 216.991 (NGVD '89)

B.M.#2 - HOWARD COUNTY CONTROL STATION NO. 4326 (NAD '83)  
 (LOCATED ALONG THE EAST SIDE OF U.S. ROUTE 1, APPROX. 3.5' OFF THE EDGE OF PAVING & APPROX. 69' SOUTH OF THE FIRE HYDRANT LOCATED IN FRONT OF MAPLE PARK MOTEL)  
 N 544,115.845  
 E 1,370,590.824  
 ELEVATION = 220.114 (NGVD '89)

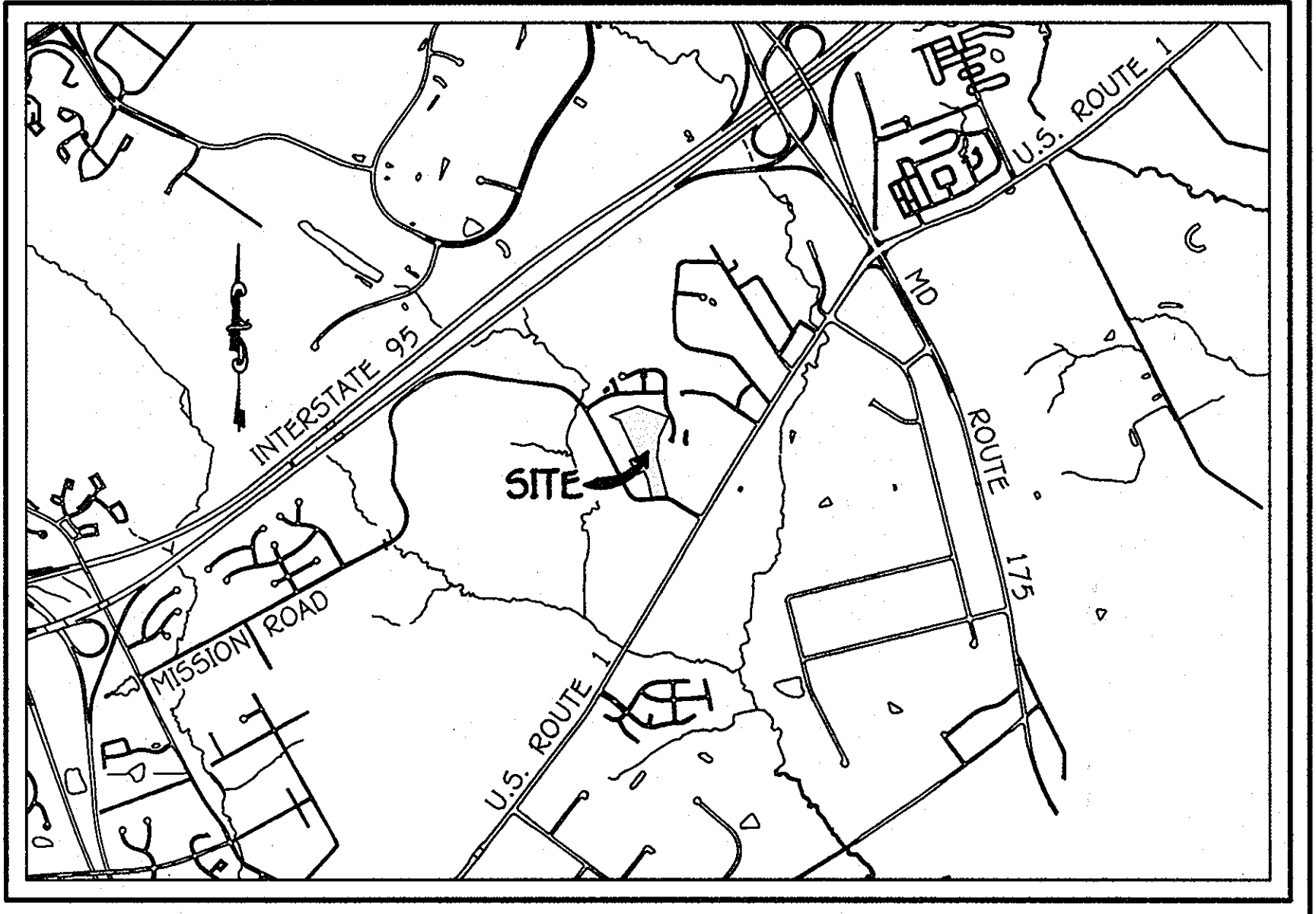
**NOTE:** THIS ORIGINAL CONSTRUCTION PLAN, SHEET 1 OF 4 SUPERSEDES THE WATER & SEWER MAIN CONSTRUCTION PLAN PREVIOUSLY APPROVED AND SIGNED BY THE DEPARTMENT OF PLANNING AND ZONING ON JANUARY 19, 2010.



TYPE OF BUILDING: RESIDENTIAL  
 NUMBER OF LOTS: 41 (39 BUILDBLE) & (1 BULK PARCEL)  
 NO. OF WATER HOUSE CONNECTIONS: 42  
 NO. OF SEWER HOUSE CONNECTIONS: 42  
 DRAINAGE AREA: LITTLE PATUXENT  
 TREATMENT PLANT: LITTLE PATUXENT WATER RECLAMATION PLANT, SAVAGE MD

**VICINITY MAP**  
 SCALE: 1" = 600'

PLAN REFERENCE NUMBERS:  
 SP-09-04 F-09-047



**LOCATION MAP**  
 SCALE: 1" = 2000'

**GENERAL NOTES**

- PART A:**
- APPROXIMATE LOCATIONS OF EXISTING MAINS ARE SHOWN. THE CONTRACTOR SHALL TAKE ALL NECESSARY PRECAUTIONS TO PROTECT EXISTING MAINS AND SERVICES AND MAINTAIN UNINTERRUPTED SERVICE. ANY DAMAGE INCURRED SHALL BE REPAIRED IMMEDIATELY TO THE SATISFACTION OF THE ENGINEER AT THE CONTRACTOR'S EXPENSE.
  - TOPOGRAPHIC FIELD SURVEYS WERE PERFORMED ON OR ABOUT OCTOBER, 2006 BY FISHER, COLLINS & CARTER, INC.
  - HORIZONTAL AND VERTICAL SURVEY CONTROLS: THE COORDINATES SHOWN ON THE DRAWINGS ARE BASED ON MARYLAND STATE REFERENCE SYSTEM NAD '83/91' AS PROJECTED BY HOWARD COUNTY GEODETIC CONTROL STATIONS NO. 4325 & NO. 4326. ALL VERTICAL CONTROLS ARE AS INDICATED IN THE BENCHMARK INFORMATION. VERTICAL CONTROLS PROVIDED ON THE DRAWINGS.
  - ALL PIPE ELEVATIONS SHOWN ARE INVERT ELEVATIONS UNLESS OTHERWISE NOTED ON THE PLANS.
  - CLEAR ALL UTILITIES BY A MINIMUM OF 12 INCHES. CLEAR ALL POLES BY 9'-0" MINIMUM OR TUNNEL AS REQUIRED UNLESS OTHERWISE NOTED. THE OWNER HAS CONTACTED THE UTILITY COMPANIES AND HAS MADE ARRANGEMENTS FOR BRACING OF POLES AS SHOWN ON THE DRAWINGS. IN THE EVENT THE CONTRACTOR'S WORK REQUIRES BRACING OF ADDITIONAL POLES, ANY COST INCURRED BY THE OWNER FOR THE BRACING OF THE ADDITIONAL POLES OR DAMAGES SHALL BE DEDUCTED FROM MONIES OWED THE CONTRACTOR. THE CONTRACTOR SHALL COORDINATE WITH THE UTILITY COMPANIES TO SCHEDULE THE BRACING OF THE POLES.
  - FOR DETAILS NOT SHOWN ON THE DRAWINGS, AND FOR MATERIALS AND CONSTRUCTION METHODS, USE HOWARD COUNTY DESIGN MANUAL, VOLUME IV, STANDARD SPECIFICATIONS AND DETAILS FOR CONSTRUCTION (LATEST EDITION). THE CONTRACTOR SHALL HAVE A COPY OF VOLUME IV ON THE JOB SITE.
  - WHERE TEST PITS HAVE BEEN MADE ON EXISTING UTILITIES, THEY ARE NOTED BY THE SYMBOL @ AT THE LOCATIONS OF THE TEST PITS. A NOTE OR NOTES CONTAINING THE RESULTS OF THE TEST PIT OR PITS IS INCLUDED ON THE DRAWINGS. EXISTING UTILITIES IN THE VICINITY OF THE PROPOSED WORK, FOR WHICH TEST PITS OR PITS HAVE NOT BEEN DUG SHALL BE LOCATED BY THE CONTRACTOR TWO WEEKS IN ADVANCE OF CONSTRUCTION OPERATIONS AT HIS OWN EXPENSE.
  - THE CONTRACTOR SHALL NOTIFY THE FOLLOWING UTILITY COMPANIES OR AGENCIES AT LEAST FIVE WORKING DAYS BEFORE STARTING WORK SHOWN ON THESE PLANS:
    - AT&T 1-800-252-1133
    - BGE (CONSTRUCTION SERVICES) 410-837-8713
    - BGE (EMERGENCY) 410-689-0123
    - BUREAU OF UTILITIES 410-313-4900
    - COLONIAL PIPELINE CO. 410-799-1390
    - HESS UTILITY 1-800-257-7777
    - STATE HIGHWAY ADMINISTRATION 410-531-5533
    - VERIZON 1-800-743-0033
  - TREES AND SHRUBS ARE TO BE PROTECTED FROM DAMAGE TO THE MAXIMUM EXTENT. TREES AND SHRUBS LOCATED WITHIN THE CONSTRUCTION STRIP ARE NOT TO BE REMOVED OR DAMAGED BY THE CONTRACTOR.
  - CONTRACTOR SHALL REMOVE TREES, STUMPS AND ROOTS ALONG THE LINE OF EXCAVATION. PAYMENT FOR SUCH REMOVAL SHALL BE INCLUDED IN THE UNIT PRICE BID FOR THE CONSTRUCTION OF THE MAIN.
  - THE CONTRACTOR SHALL NOTIFY THE BUREAU OF HIGHWAYS, HOWARD COUNTY, AT (410)-313-7450 AT LEAST FIVE WORKING DAYS BEFORE OPEN CUTTING OR BORING/JACKING OF ANY COUNTY ROAD FOR LAYING WATER/SEWER MAINS OR HOUSE CONNECTIONS. THE APPROVAL OF THESE DRAWINGS WILL CONSTITUTE COMPLIANCE WITH DPW REQUIREMENTS PER SECTION 18.11(a) OF THE HOWARD COUNTY CODE.

- PART B: WATER MAIN GENERAL NOTES**
- ALL WATER MAINS SHALL BE ANVMA C900, MINIMUM DE 12.
  - TOPS OF ALL WATER MAINS SHALL HAVE A MINIMUM OF 3'-6" OF COVER UNLESS OTHERWISE NOTED.
  - VALVES ADJACENT TO TREES SHALL BE STRAPPED TO TREES.
  - ALL FITTINGS SHALL BE BUTTRESSED OR ANCHORED WITH CONCRETE IN ACCORDANCE WITH STANDARD DETAILS UNLESS OTHERWISE PROVIDED FOR ON THE DRAWINGS.
  - FIRE HYDRANTS SHALL BE SET TO THE BURY LINE ELEVATIONS SHOWN ON THE DRAWINGS. ALL FIRE HYDRANTS SHALL BE INSTALLED IN ACCORDANCE WITH STANDARD DETAILS. THE SOIL AROUND THE FIRE HYDRANT SHALL BE COMPACTED IN ACCORDANCE WITH SECTION 1000 AND SECTION 1005 OF THE STANDARD SPECIFICATIONS.
  - THE CONTRACTOR SHALL NOT OPERATE ANY WATER MAIN VALVES ON THE EXISTING WATER SYSTEM.
  - FOR PVC WATER MAINS, ALL RECORDS FOR THE QUALITY CONTROL AND QUALIFICATION TEST REQUIREMENTS NOTED IN SECTION 5.1 OF THE ANVMA STANDARD C900 FOR PVC PRESSURE PIPE SHALL BE SUBMITTED WITH THE PIPE MATERIAL CERTIFICATIONS OR SHOP DRAWINGS PRIOR TO APPROVAL OF THE MATERIAL FOR USE. THE TEST RECORDS SHALL BE FOR THE PIPE TO BE INSTALLED UNDER THIS CONTRACT. ALL PVC PIPE SHALL CONTAIN MARKINGS TO ALLOW CROSS REFERENCING OF THE PIPE SUPPLIED TO THE TEST RECORDS RECEIVED.
  - UNLESS OTHERWISE NOTED ON THE PLANS OR IN THE SPECIFICATIONS, SEVENTEEN (17) POUND SACRIFICIAL ANODES SHALL BE INSTALLED ON ALL VALVES AND METALLIC FITTINGS USED IN ACCORDANCE WITH VOLUME IV, STANDARD SPECIFICATIONS AND DETAILS FOR CONSTRUCTION. MAGNESIUM ANODES SHALL BE INSTALLED ON ALL VALVES AND DUCTILE IRON FITTINGS INCLUDING RESTRAINTS AND HARNESSES. ZINC ANODES SHALL BE INSTALLED ON ALL STAINLESS STEEL FITTINGS AND SADDLES USED WITH PVC MAINS. ALL "TEES" USED WITH PVC MAINS SHALL BE DUCTILE IRON.
  - ALL DWELLING UNITS SHALL HAVE A 1-1/2" WATER HOUSE CONNECTION WITH A 1" OUTSIDE METER SETTING; STD. DET. W-3.28 OR STD. DET. W-3.32.

- PART C: SEWER MAIN GENERAL NOTES**
- ALL WATER MAINS SHALL BE D.I.P. OR P.V.C. AS SPECIFIED ON PLANS.
  - ALL MANHOLES SHALL BE 41" INSIDE DIAMETER UNLESS OTHERWISE NOTED.
  - FORCE MAINS SHALL BE D.I.P. ONLY.
  - MANHOLES SHOWN WITH 12" AND 18" WALLS ARE FOR BRICK MANHOLES ONLY.
  - MANHOLES DESIGNATED W.T. IN PLAN AND PROFILE SHALL HAVE WATERTIGHT FRAME AND COVER, STANDARD DET. G5.52. WHERE WATERTIGHT MANHOLE FRAMES AND COVERS ARE USED, SET TOP OF FRAME 1'-6" ABOVE FINISHED GRADE UNLESS OTHERWISE NOTED ON THE DRAWINGS.
  - HOUSE(S) WITH THE SYMBOL "C.N.S." INDICATES THAT CELLAR CANNOT BE SERVED.

CONTRACT NO. 24-4500-D

# GABRIEL'S COURTYARD

LOTS 1 THRU 39, OPEN SPACE LOTS 40 & 41  
 & NON-BUILDABLE BULK PARCEL 'A'  
 WATER & SEWER MAIN EXTENSIONS  
 HOWARD COUNTY, MARYLAND

**DEVELOPER'S CERTIFICATION**

I/WE HEREBY CERTIFY THAT ALL DEVELOPMENT AND CONSTRUCTION WILL BE DONE ACCORDING TO THIS PLAN OF DEVELOPMENT AND PLAN FOR EROSION AND SEDIMENT CONTROL AND THAT ALL RESPONSIBLE PERSONNEL INVOLVED IN THE CONSTRUCTION PROJECT WILL HAVE A CERTIFICATE OF ATTENDANCE AT THE DEPARTMENT OF THE ENVIRONMENT TRAINING PROGRAM FOR THE CONTROL OF SEDIMENT AND EROSION BEFORE BEGINNING THE PROJECT. I ALSO AUTHORIZE PERIODIC ON-SITE INSPECTION BY THE HOWARD SOIL CONSERVATION DISTRICT OR THEIR AUTHORIZED AGENTS, AS ARE DEEMED NECESSARY.

Paul W. Keibel, FOR:  
 TRINITY QUALITY HOMES, INC. 12-14-10  
 SIGNATURE OF DEVELOPER DATE

**ENGINEER'S CERTIFICATION**

I HEREBY CERTIFY THAT THIS PLAN FOR EROSION AND SEDIMENT CONTROL REPRESENTS A PRACTICAL AND WORKABLE PLAN BASED ON MY PERSONAL KNOWLEDGE OF THE SITE CONDITIONS AND THAT IT WAS PREPARED IN ACCORDANCE WITH THE REQUIREMENTS OF THE HOWARD SOIL CONSERVATION DISTRICT.

Paul W. Keibel, 12/14/10  
 SIGNATURE OF ENGINEER DATE

SEDIMENT CONTROL MEASURES FOR THIS CONTRACT WILL BE IMPLEMENTED IN ACCORDANCE WITH SECTION 306 OF THE HOWARD COUNTY DESIGN MANUAL - VOLUME IV, STANDARD SPECIFICATIONS AND DETAILS FOR CONSTRUCTION AND AS SHOWN ON THE ROAD CONSTRUCTION PLAN, F-09-047.

Paul W. Keibel, FOR:  
 TRINITY QUALITY HOMES, INC. 12-14-10  
 SIGNATURE OF DEVELOPER DATE

GP-09-029

THIS DEVELOPMENT IS APPROVED FOR EROSION AND SEDIMENT CONTROL BY HOWARD SOIL CONSERVATION DISTRICT.

APPROVED: John R. Robertson 1/13/11  
 HOWARD SOIL CONSERVATION DISTRICT DATE

DEPARTMENT OF PUBLIC WORKS  
 HOWARD COUNTY, MARYLAND

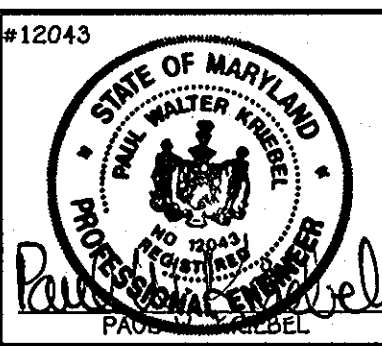
APPROVED: [Signature] 12/14/10  
 CHIEF, BUREAU OF UTILITIES DATE

DEPARTMENT OF PLANNING AND ZONING  
 HOWARD COUNTY, MARYLAND

APPROVED: [Signature] 1/14/11  
 CHIEF, DEVELOPMENT ENGINEERING DIVISION DATE

I HEREBY CERTIFY THAT THESE DOCUMENTS WERE PREPARED OR APPROVED BY ME, AND THAT I AM A DULY LICENSED PROFESSIONAL ENGINEER UNDER THE LAWS OF THE STATE OF MARYLAND.  
 LICENSE NO. 12043 EXPIRATION DATE 5/7/16/12

FISHER, COLLINS & CARTER, INC.  
 CIVIL ENGINEERING CONSULTANTS & LAND SURVEYORS  
 CENTRAL SQUARE OFFICE PARK - 10272 BALTIMORE NATIONAL PIKE  
 ELLOTT CITY, MARYLAND 21042  
 (410) 461-2292



REV	AS-BUILT	DATE
1	EL#3: REVISE W.M. TO ANVMA C900, DR 12, REVISE QUANTITY	1/12/11
2	REVISE NO. OF WATER & SEWER HOUSE CONNECTIONS	1/17/11
3	REVISE NAME & ADDRESS OF DEVELOPER	1/17/11
4	INCLUDE PROFESSIONAL CERTIFICATION STATEMENT	1/17/11
5	REVISE/ADD QUANTITIES ITEMS AS REQUIRED	1/17/11
6	UPDATE GENERAL NOTES FOR CONFORMANCE WITH CURRENT PERMITS	1/17/11
7	REVISE CONTRACT TITLE AT ALL LOCATIONS	1/17/11

WATER AND SEWER MAINS  
 TITLE SHEET

600' SCALE MAP NO. 43, BLOCK NO. 14  
 F.C.C. WORK ORDER NO. 06096

FILE NAME: WATER AND SEWER EXTENSION TITLE SHEET

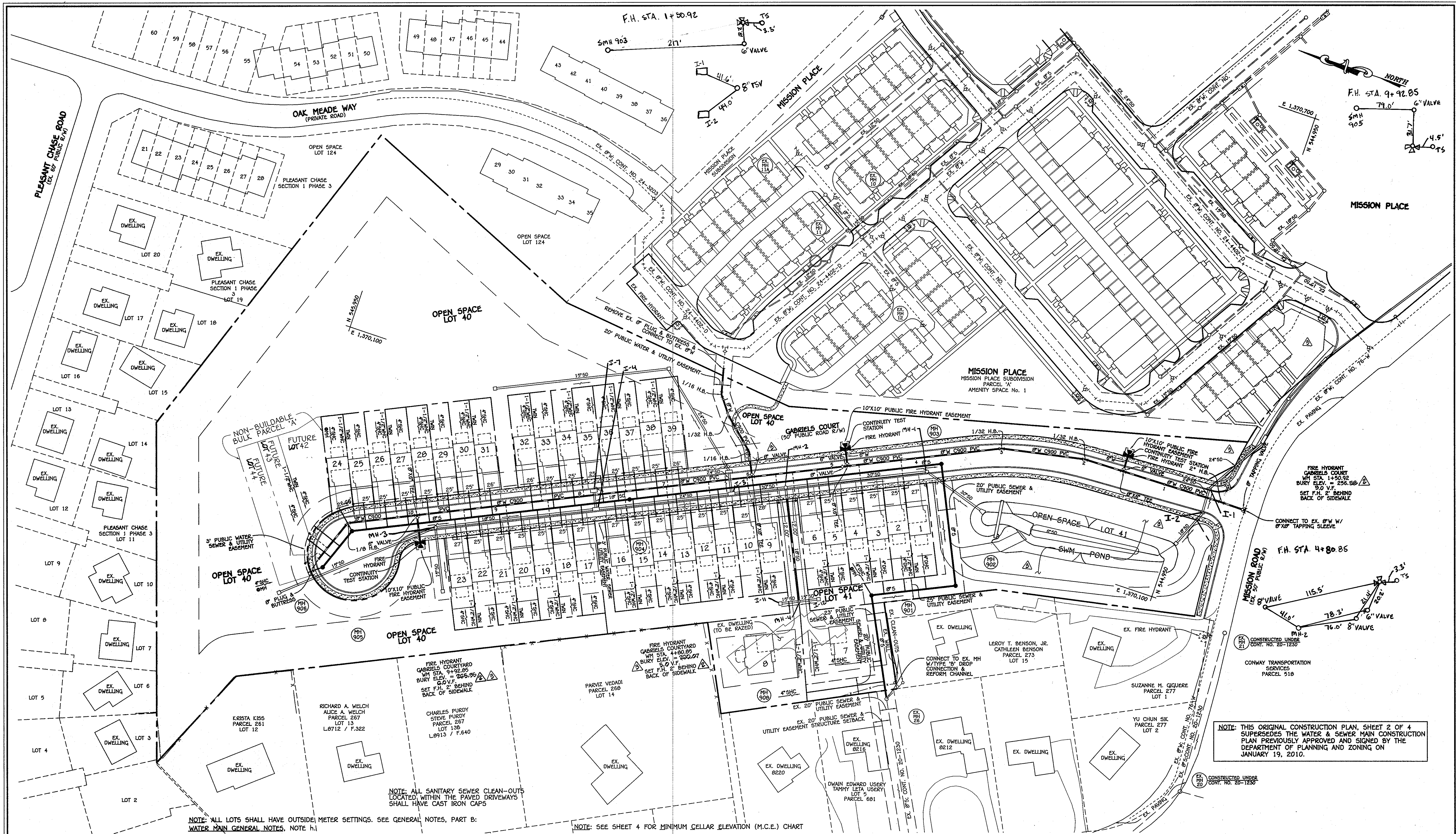
**DEVELOPER**

TRINITY QUALITY HOMES, INC.  
 C/O MR. MICHAEL PFAU  
 3675 PARK AVENUE  
 SUITE 301  
 ELK RIDGE, MARYLAND 21043

CONTRACT NO. 24-4500-D  
 GABRIEL'S COURTYARD  
 LOTS 1 THRU 39, OPEN SPACE LOTS 40 & 41  
 & NON-BUILDABLE BULK PARCEL 'A'  
 WATER AND SEWER MAIN EXTENSIONS  
 HOWARD COUNTY, MARYLAND

SCALE AS SHOWN  
 SHEET 1 OF 4

I:\2006\06096.dwg 06096-3001 Water And Sewer Base Plan (Redline Oct. 2010).dwg 12/13/2010 3:44:56 PM



NOTE: THIS ORIGINAL CONSTRUCTION PLAN SHEET 2 OF 4 SUPERSEDES THE WATER & SEWER MAIN CONSTRUCTION PLAN PREVIOUSLY APPROVED AND SIGNED BY THE DEPARTMENT OF PLANNING AND ZONING ON JANUARY 19, 2010.

NOTE: ALL LOTS SHALL HAVE OUTSIDE METER SETTINGS. SEE GENERAL NOTES, PART B: WATER MAIN GENERAL NOTES, NOTE H.1

NOTE: ALL SANITARY SEWER CLEAN-OUTS LOCATED WITHIN THE PAVED DRIVEWAYS SHALL HAVE CAST IRON CAPS

NOTE: SEE SHEET 4 FOR MINIMUM CELLAR ELEVATION (M.C.E.) CHART

PLAN  
SCALE: 1" = 50'

CONTRACT NO. 24-4500-D  
GABRIEL'S COURTYARD  
LOTS 1 THRU 39, OPEN SPACE LOTS 40 & 41  
& NON-BUILDABLE BULK PARCEL 'A'  
WATER AND SEWER MAIN EXTENSIONS  
HOWARD COUNTY, MARYLAND

DEPARTMENT OF PUBLIC WORKS  
HOWARD COUNTY, MARYLAND

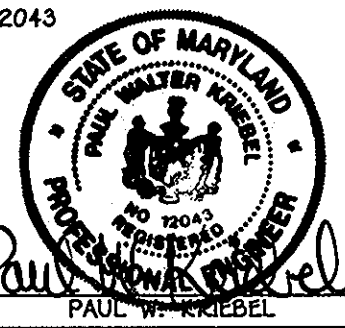
*[Signature]*  
CHIEF, BUREAU OF UTILITIES

DEPARTMENT OF PLANNING AND ZONING  
HOWARD COUNTY, MARYLAND

*[Signature]*  
CHIEF, DEVELOPMENT ENGINEERING DIVISION

I HEREBY CERTIFY THAT THESE DOCUMENTS WERE PREPARED OR APPROVED BY ME, AND THAT I AM A DULY LICENSED PROFESSIONAL ENGINEER UNDER THE LAWS OF THE STATE OF MARYLAND.  
LICENSE NO. 12243 EXPIRATION DATE 5/7/16/12

**FISHER, COLLINS & CARTER, INC.**  
CIVIL ENGINEERING CONSULTANTS & LAND SURVEYORS  
CENTRAL SOURCE OFFICE PARK - 10272 BALDWIN NATIONAL PIKE  
ELLSWORTH CITY, MARYLAND 21042  
(410) 481-2999



DESIGNED BY:	B.C.E.	
DRAWN BY:	KCC AS-BUILT	9/20/13
CHECKED BY:	PCC	7/19/11
DATE:	DECEMBER, 2010	

**WATER AND SEWER MAINS PLAN**

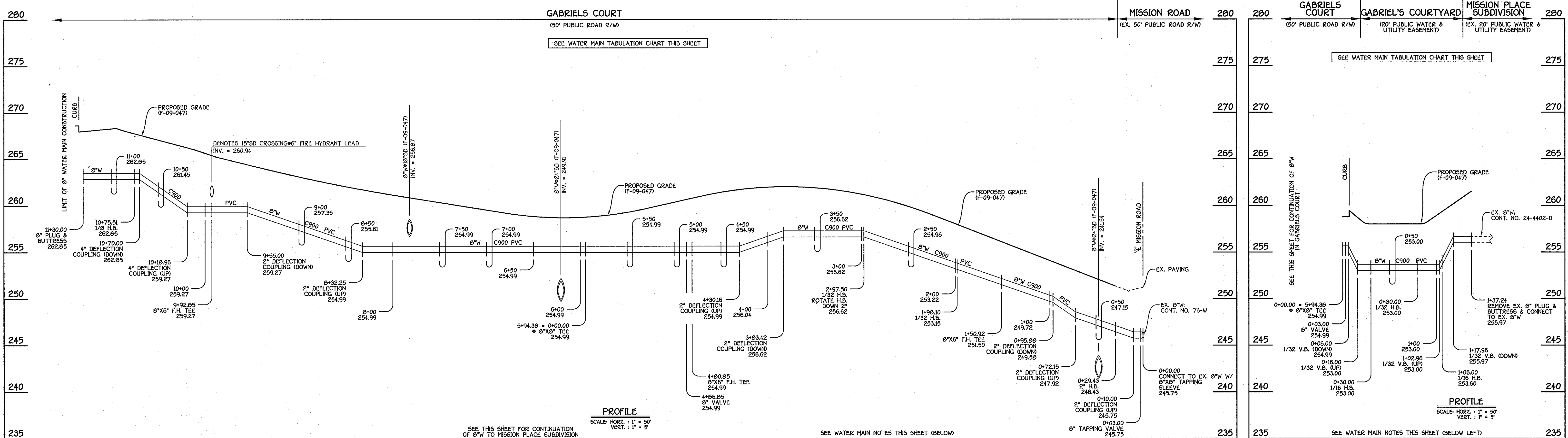
600' SCALE MAP NO. 43 BLOCK NO. 14  
F.C.C. WORK ORDER NO. 06096

FILE NAME: WATER AND SEWER EXTENSION PLAN SHEET

**GABRIEL'S COURTYARD**  
LOTS 1 THRU 39, OPEN SPACE LOTS 40 & 41  
& NON-BUILDABLE BULK PARCEL 'A'  
WATER & SEWER MAIN EXTENSIONS  
CONTRACT NO. 24-4500-D  
SIXTH ELECTION DISTRICT  
HOWARD COUNTY, MARYLAND

SCALE AS SHOWN  
SHEET 2 OF 4

I:\2008\06096\dwg\06096-3001 Water And Sewer Base Plan (Redline Oct. 2010).dwg, 12/13/2010 3:45:24 PM



**8" WATER MAIN: GABRIELS COURT**

**8" WATER MAIN: TO MISSION PLACE SUBDIVISION**

- WATER MAIN NOTES:**
- EXCEPT FOR THE 8"x6" TAPPING SLEEVE AND VALVE (WM STA. 0+00.00 TO WM STA. 0+03.00 AT MISSION ROAD), ALL WATER MAINS SHALL BE AWWA C900 PVC PIPE.
  - ALL PIPE BEDDING, TRACER WIRE, LOCATING TAPE AND OTHER APPURTENANCES SHALL BE IN ACCORDANCE WITH THE HOWARD COUNTY DESIGN MANUAL, VOLUME II - WATER AND SEWER STANDARDS FOR AWWA C900 PVC WATER PIPE INSTALLATION.
  - DEFLECTION COUPLINGS SHALL BE CERTAIN-TEED PVC HIGH DEFLECTION COUPLINGS.
  - ALL WATER HOUSE CONNECTIONS AND TAPS SHALL BE PERFORMED USING A SADDLE.

W.M. STA.	APPURTENANCE	NORTHING	EASTING
8" WATER MAIN: GABRIELS COURT			
0+00.00	8"x6" TAPPING SLEEVE	544878.85	1370232.47
0+03.00	8" TAPPING VALVE	544881.85	1370232.50
0+29.43	2" H.B.	544908.28	1370232.79
1+50.92	8"x6" F.H. TEE	545029.75	1370230.37
1+98.10	1/32 H.B.	545076.91	1370229.43
2+97.50	1/32 H.B.	545174.41	1370210.04
4+80.85	8"x6" F.H. TEE	545340.26	1370131.86
4+86.74	8" VALVE	545345.88	1370129.31
5+94.38	8"x6" TEE	545442.94	1370083.46
9+92.85	8"x6" F.H. TEE	545803.38	1369913.55
10+75.51	1/8 H.B.	545878.14	1369878.31
11+30.00	8" PLUG & BUTTRESS	545896.78	1369827.10

W.M. STA.	APPURTENANCE	NORTHING	EASTING
8" WATER MAIN: TO MISSION PLACE SUBDIVISION			
0+00.00	8"x8" TEE	545442.94	1370083.46
0+03.00	8" VALVE	545444.22	1370086.17
0+30.00	1/16 H.B.	545455.74	1370101.60
0+80.00	1/32 H.B.	545492.94	1370144.00
1+06.00	1/16 H.B.	545508.54	1370164.79
1+37.24	EX. 8" PLUG & BUTTRESS	545516.17	1370195.08

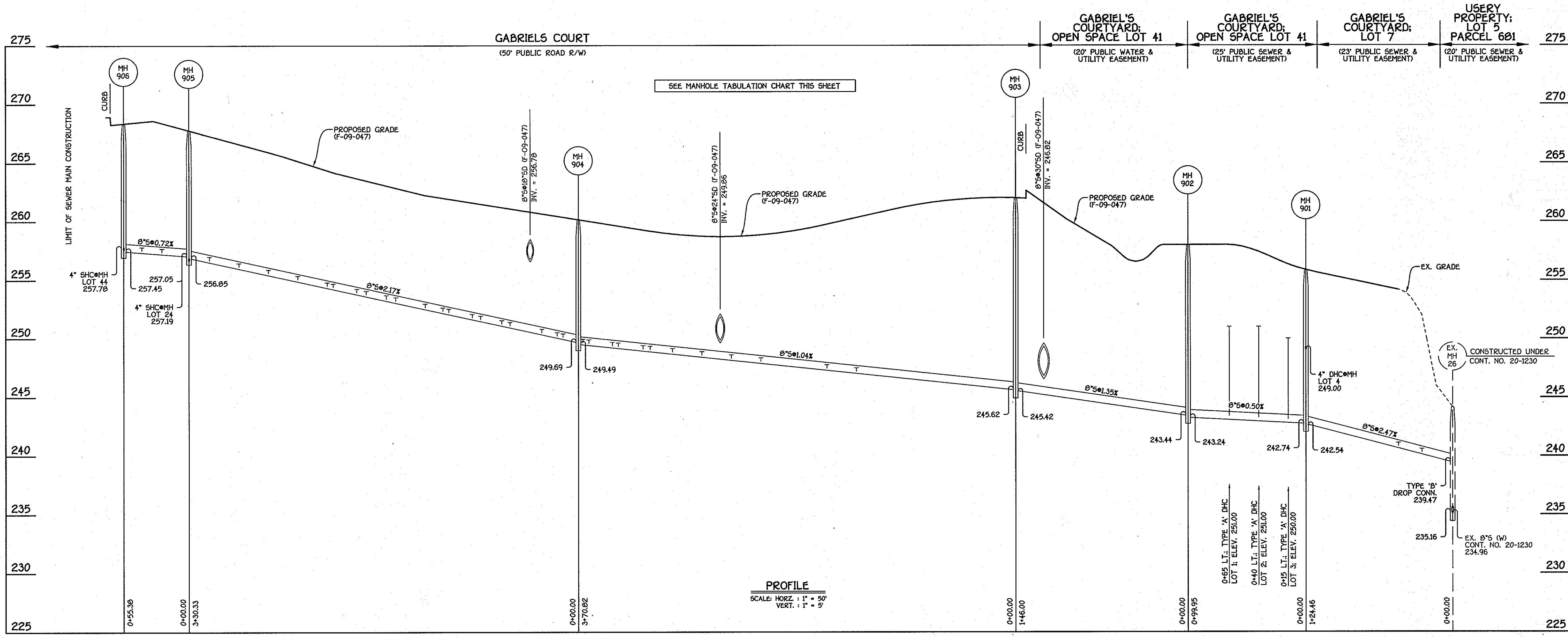
LOT	UNIT	FROM	TO	FEET	TO	FEET
1 & 2	TWHC	MH-1	MH-2	34.9	MH-2	84.6
3 & 4	TWHC	MH-1	MH-2	81.0	MH-2	58.0
5 & 6	TWHC	FH STA. 4+80	MH-2	67.0	MH-2	42.2
7	WHC	FH STA. 4+80	MH-2	86.6	MH-2	21.3
8	WHC	MH-2	I-3	19.7	I-3	56.7
9 & 10	TWHC	MH-2	I-3	42.6	I-3	29.4
11 & 12	TWHC	MH-2	I-3	90.6	I-3	29.8
13 & 14	WHC	SMH-904	I-4	51.7	I-4	51.7
15 & 16	WHC	SMH-904	I-4	24.0	I-4	38.9
17	WHC	SMH-904	I-4	53.8	I-4	17.5
18 & 19	TWHC	SMH-904	I-4	98.0	I-4	57.4
20 & 21	TWHC	FH STA. 9+93	MH-3	105.6	MH-3	87.7
22 & 23	TWHC	FH STA. 9+93	MH-3	55.8	MH-3	41.1
24 & 25	TWHC	SMH-906	SMH-905	84.4	SMH-905	33.2
26 & 27	WHC	FH STA. 9+93	MH-3	59.0	MH-3	57.4
28 & 29	TWHC	FH STA. 9+93	MH-3	60.4	MH-3	38.5
30 & 31	TWHC	FH STA. 9+93	MH-3	94.0	MH-3	68.6
32 & 33	TWHC	I-7	SMH-904	64.0	SMH-904	109.0
34 & 35	TWHC	I-7	SMH-904	19.0	SMH-904	62.0
36 & 37	TWHC	I-7	SMH-904	41.0	SMH-904	33.4
38 & 39	TWHC	I-7	SMH-904	89.4	SMH-904	58.0
42 & 43	TWHC	SMH-906	SMH-905	44.0	SMH-905	50.4
44	WHC	SMH-906	SMH-905	22.6	SMH-905	67.6

NOTE: THIS ORIGINAL CONSTRUCTION PLAN, SHEET 3 OF 4 SUPERSEDES THE WATER & SEWER MAIN CONSTRUCTION PLAN PREVIOUSLY APPROVED AND SIGNED BY THE DEPARTMENT OF PLANNING AND ZONING ON APRIL 20, 2011.

**\*M.C.E. CHART**

LOT	ELEVATION
1	255.80
2	255.80
3	254.80
4	253.84
5	251.49
6	251.83
7	245.68
8	246.94
9	252.38
10	252.72
11	252.90
12	253.24
13	253.42
14	253.79
15	253.97
16	254.63
17	255.40
18	256.04
19	256.59
20	257.14
21	257.60
22	258.23
23	258.71
24	261.87
25	261.11
26	260.65
27	260.03
28	259.56
29	258.94
30	258.48
31	257.86
32	256.90
33	256.31
34	255.81
35	255.17
36	254.72
37	254.01
38	253.79
39	253.51
42	262.97
43	262.61
44	263.26

\*M.C.E. DENOTES MINIMUM CELLAR ELEVATION



**PROFILE**  
SCALE: HORIZ. 1" = 50'  
VERT. 1" = 5'

**AS-BUILTS GABRIEL'S COURTYARD SHC, 24-4500-D (F-09-047)**

LOT UNIT	FROM	TO	FEET	TO	FEET
1	SHC	SMH-901	67.4	SMH-902	40.8
2	SHC	SMH-901	43.6	SMH-902	63.6
3	SHC	SMH-901	22.6	SMH-902	87.5
4	SHC	SMH-901	17.0	SMH-902	109.0
5	SHC	FH STA 4+80	61.0	MH-2	55.0
6	SHC	FH STA 4+80	73.6	MH-2	33.0
7	SHC	SMH-901	88.0	I-12	96.8
8	SHC	I-11	105.0	I-12	109.0
9	SHC	MH-2	36.0	I-3	38.6
10	SHC	MH-2	56.0	I-3	19.6
11	SAC	MH-2	88.6	I-3	22.6
12	SHC	MH-2	105.7	I-3	44.6
13	SHC	I-3	68.0	SMH-904	60.0
14	SHC	I-3	92.0	SMH-904	38.2
15	SHC	I-3	46.4	SMH-904	24.2
16	SHC	I-3	28.0	SMH-904	30.0
17	SHC	I-4	23.6	SMH-904	62.0
18	SHC	I-4	44.2	SMH-904	84.6
19	SHC	I-4	71.0	SMH-904	122.5
20	SHC	I-4	91.0	SMH-904	102.6
21	SHC	FH STA 9+93	96.8	MH-3	79.7
22	SHC	FH STA 9+93	71.5	MH-3	55.4
23	SHC	FH STA 9+93	43.8	MH-3	30.3
24	SHC	SMH-906	74.0	SMH-905	33.6
25	SHC	SMH-906	90.6	SMH-905	37.3
26	SHC	MH-3	67.5	SMH-905	53.8
27	SHC	MH-3	49.3	SMH-905	75.0
28	SHC	MH-3	39.0	SMH-905	97.8
29	SHC	MH-3	42.7	FH STA 9+93	67.5
30	SHC	FH STA 9+93	84.6	MH-3	58.7

NOTE: THIS ORIGINAL CONSTRUCTION PLAN, SHEET 4 OF 4 SUPERSEDES THE WATER & SEWER MAIN CONSTRUCTION PLAN PREVIOUSLY APPROVED AND SIGNED BY THE DEPARTMENT OF PLANNING AND ZONING ON JUNE 19, 2010.

**8" SEWER MAIN: GABRIEL'S COURT TO 8" OUTFALL**

**SHC INVERT @ PROPERTY LINE CHART**

STATION	LOT	ELEVATION
EX. MH 26 TO MH 901		
0+26 LT.	8	242.14
0+46 LT.	7	240.98
• MH 901 LT.	4 (DHC)	249.34
MH 901 TO MH 902		
0+15 LT.	3 (DHC)	250.30
0+40 LT.	2 (DHC)	251.30
0+65 LT.	1 (DHC)	251.30
MH 903 TO MH 904		
1+35 LT.	5	247.67
1+60 LT.	6	247.93
2+16 LT.	9	248.52
2+41 LT.	10	248.78
2+66 LT.	11	249.04
2+91 LT.	12	249.30
3+16 LT.	13	249.56
3+42 LT.	14	249.83
3+62 RT.	37	250.19
3+67 LT.	15	250.09

**SHC INVERT @ PROPERTY LINE CHART**

STATION	LOT	ELEVATION
MH 904 TO MH 905		
0+13 RT.	36	250.78
0+18 LT.	16	250.73
0+31 RT.	35	251.17
0+58 LT.	17	251.60
0+65 RT.	34	251.91
0+83 LT.	18	252.14
0+90 RT.	33	252.45
1+10 LT.	19	252.73
1+15 RT.	32	253.00
1+30 LT.	20	253.16
1+55 LT.	21	253.70
1+63 RT.	31	254.04
1+88 LT.	22	254.25
1+88 RT.	30	254.58
2+08 LT.	23	254.85
2+13 RT.	29	255.12
2+38 RT.	28	255.66
2+63 RT.	14	256.21
2+88 RT.	26	256.75
3+13 RT.	25	257.29
• MH 906 RT.	24	257.83
MH 905 TO MH 906		
0+23 RT.	42	258.17
0+40 RT.	43	258.23
• MH 907 RT.	44	258.16

**MANHOLE TABULATION CHART**

NO.	NORTHING	EASTING	RIM ELEVATION
901	545264.04	1369995.21	256.00 *
902	545173.68	1370037.92	258.00 *
903	545235.93	1370169.98	262.00 *
904	545571.35	1370011.87	260.14 *
905	545870.15	1369871.02	267.76 *
906	545889.09	1369818.98	268.33 *

NOTE: \*SET MH RIM FLUSH W/PROPOSED GRADE.  
\*\*SET MH RIM FLUSH W/EXISTING PAVING OF MISSION ROAD.

**AS-BUILTS GABRIEL'S COURTYARD SHC, 24-4500-D (F-09-047) CONTINUED**

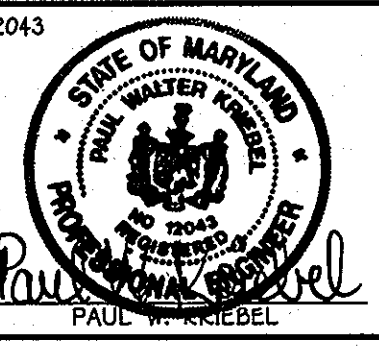
LOT UNIT	FROM	TO	FEET	TO	FEET
31	SHC	MH-3	79.0	FH STA. 9+93	104.7
32	SHC	SMH-904	119.0	I-7	75.6
33	SHC	SMH-904	95.0	I-7	51.0
34	SHC	SMH-904	69.0	I-7	29.0
35	SHC	SMH-904	44.8	I-7	18.6
36	SHC	SMH-904	35.5	I-7	32.5
37	SHC	SMH-904	34.6	I-7	51.8
38	SHC	SMH-904	48.6	I-7	76.7
39	SHC	SMH-904	69.2	I-7	101.9
42	SHC	SMH-906	52.0	SMH-905	46.3
43	SHC	SMH-906	41.3	SMH-905	55.3
44	SHC	SMH-906	24.8	SMH-905	72.7

CONTRACT NO. 24-4500-D  
GABRIEL'S COURTYARD  
LOTS 1 THRU 39, OPEN SPACE LOTS 40 & 41  
& NON-BUILDABLE BULK PARCEL 'A'  
WATER & SEWER MAIN EXTENSIONS  
HOWARD COUNTY, MARYLAND

DEPARTMENT OF PUBLIC WORKS  
HOWARD COUNTY, MARYLAND  
*John C. Green*  
CHIEF, BUREAU OF UTILITIES  
7/22/11

DEPARTMENT OF PLANNING AND ZONING  
HOWARD COUNTY, MARYLAND  
*John J. ...*  
CHIEF, DEVELOPMENT ENGINEERING DIVISION  
N.G. DATE

I HEREBY CERTIFY THAT THESE DOCUMENTS WERE PREPARED OR APPROVED BY ME, AND THAT I AM A DULY LICENSED PROFESSIONAL ENGINEER UNDER THE LAWS OF THE STATE OF MARYLAND.  
LICENSE NO. 12043 EXPIRATION DATE IS 7/31/12.  
**FISHER, COLLINS & CARTER, INC.**  
CIVIL ENGINEERING CONSULTANTS & LAND SURVEYORS  
CENTRAL SOURCE OFFICE PARK - 10272 BALTIMORE NATIONAL PIKE  
ELICOTT CITY, MARYLAND 21042  
(410) 461-2899



DESIGNED BY: B.C.R.  
DRAWN BY: B.C.R.  
CHECKED BY: P.W.K.  
DATE: JULY, 2011  
BY NO. AS-BUILT  
REVISION  
DATE: 4/20/13

SEWER MAIN PROFILE & CHARTS  
600' SCALE MAP NO. 43, BLOCK NO. 14  
F.C.C. WORK ORDER NO. 06096  
FILE NAME: WATER AND SEWER EXTENSION PROFILE SHEET

GABRIEL'S COURTYARD  
LOTS 1 THRU 39, OPEN SPACE LOTS 40 & 41  
& NON-BUILDABLE BULK PARCEL 'A'  
WATER & SEWER MAIN EXTENSIONS  
CONTRACT NO. 24-4500-D  
SIXTH ELECTION DISTRICT  
HOWARD COUNTY, MARYLAND  
SCALE AS SHOWN  
SHEET 4 OF 4