

PRELIMINARY WATER PLAN

VILLAGE TOWNS, PARCEL 3, PHASE III-A

UNITS: 178 THRU 245

1st ELECTION DISTRICT
HOWARD COUNTY, MARYLAND
CONTRACT NO. #44-4490-D

QUANTITIES (PUBLIC)				
ITEMS	ESTIMATED QUANTITIES	AS-BUILT		
		QUANTITIES	TYPE	MANUFACTURER/SUPPLIER
8" WATER MAIN (DIP)	1,193 LF	1,193 LF	DIP	GRIFFIN
6" WATER MAIN (DIP)	109 LF	109 LF	DIP	GRIFFIN
1.5" W.H.C	1,753 LF	1,753 LF	COPPER	READING
8"x8" TEE	2 EA.	2 EA.	DIP	—
8"x6" FHT	5 EA.	6 EA.	DIP	—
12"x8" TSV	1 EA.	1 EA.	STAINLESS S.	ROMAC IND./MUELLER
8"x8" TSV	1 EA.	1 EA.	STAINLESS S.	ROMAC IND./MUELLER
8"x6" TSV	1 EA.	1 EA.	STAINLESS S.	ROMAC IND./MUELLER
6" FIRE HYDRANT	6 EA.	6 EA.	DIP	MUELLER
8" -1/8 HB	4 EA.	4 EA.	MJ,DIP	SIGMA CORP.
8" -1/8 VB	4 EA.	4 EA.	MJ,DIP	SIGMA CORP.
8" -1/16 HB	2 EA.	2 EA.	MJ,DIP	SIGMA CORP.
8" -1/32 HB	1 EA.	1 EA.	MJ,DIP	SIGMA CORP.
METER BOXES	82 EA.	82 EA.	—	VESTAL MFG.
8" VALVE	8 EA.	8 EA.	GATE VALVE	MUELLER
6" VALVE	5 EA.	5 EA.	GATE VALVE	MUELLER
8" CAP & BUTRESS	1 EA.	1 EA.	DIP	—

NAME OF UTILITY CONTRACTOR: **S.E.H. CONTRACTING**

SURVEY AND DRAFTING DIV. CHECK BOX AS-BUILT DATE: **9-08**

SHEET INDEX	
1	COVER SHEET
2	WATER PLAN
3	WATER PROFILES

BILL OF MATERIALS PUBLIC WATER		
QUANTITY	SIZE	DESCRIPTION
1,193 LF	8"	CLASS 54 DIP WATER MAIN
109 LF	6"	CLASS 54 DIP WATER MAIN
1	12"x8"	TAPPING SLEEVE & VALVE
1	8"x8"	TAPPING SLEEVE & VALVE
1	8"x6"	TAPPING SLEEVE & VALVE
5	8"x6"	FHT
2	8"x8"	TEE
8	8"	VALVE & ROADWAY BOX
5	6"	VALVE & ROADWAY BOX
1	8"	CONC. CAP & BUTRESS
6	6"	FIRE HYDRANT
8	8"	1/8-HB/VB
2	8"	1/16-HB
1	8"	1/32-HB
1,753 LF	1.5"	W.H.C
82	1"	1" METER

EROSION AND SEDIMENT CONTROL FOR THIS CONTRACT IS PROVIDED UNDER SDP-07-103

PLAN REFERENCE NUMBERS
 SDP-03-102
 SDP-07-103

SEDIMENT CONTROL MEASURES FOR THIS CONTRACT WILL BE IMPLEMENTED IN ACCORDANCE WITH SECTION 219 OF THE SPECIFICATIONS AND AS SHOWN ON SDP-07-103

REVIEW FOR HOWARD SOIL CONSERVATION DISTRICT AND MEETS TECHNICAL REVIEW

NATURAL RESOURCES CONSERVATION SERVICE DATE: _____

THIS PLAN IS APPROVED FOR SOIL EROSION AND SEDIMENT CONTROL BY THE HOWARD SOIL CONSERVATION DISTRICT.

John R. Robertson 1/17/08
 HOWARD SOIL CONSERVATION DISTRICT DATE

OWNER/DEVELOPER/APPLICANT

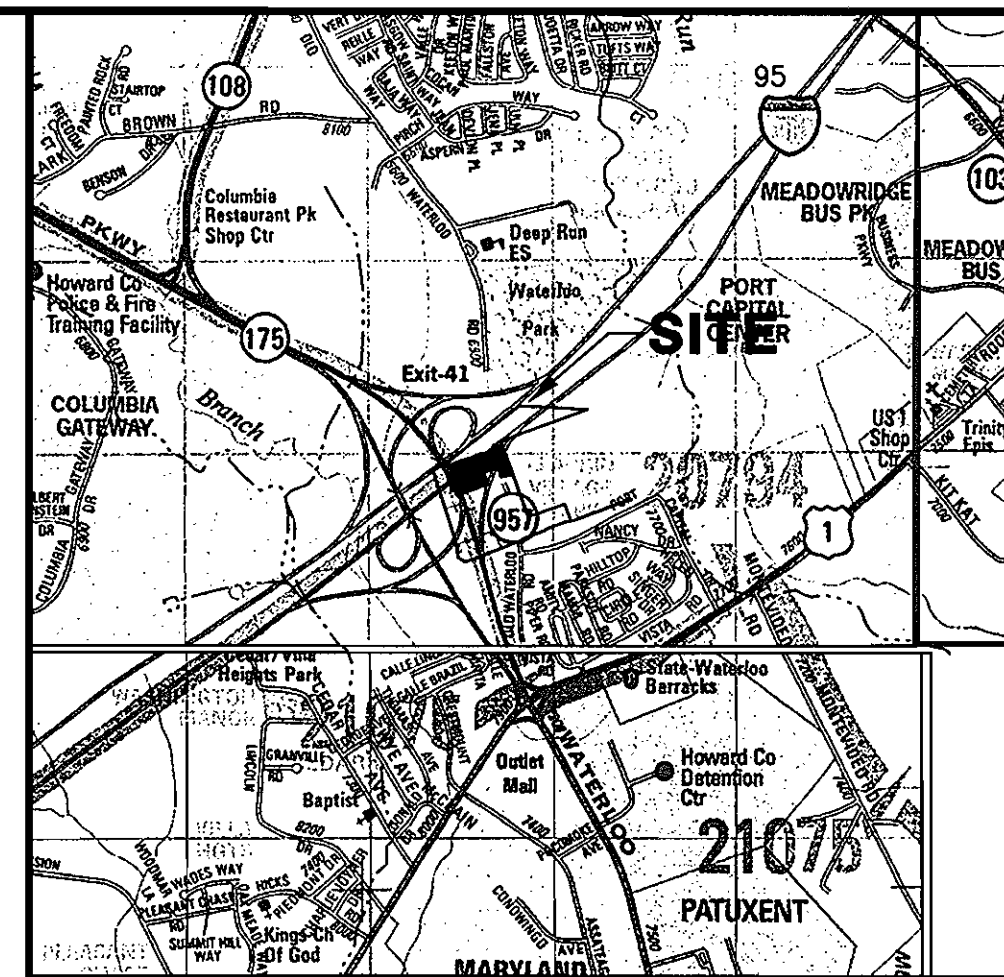
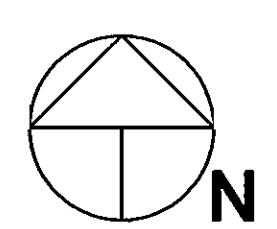
NAME: MR. MARK L. LEVY
 COMPANY: H&H ROCK COMPANIES
 6800 DEERPATH ROAD, SUITE 100
 ELKRIDGE, MARYLAND 21075
 PHONE: 410.579.2442
 FAX: 410.579.1441



EX. PROPERTY LINES
 EX. ADJACENT PROPERTY LINES
 EX. STREAM
 EX. HOWARD COUNTY GEODETIC COORDINATE

LOCATION MAP
 SCALE: 1"=600'

W & S COUNTY USE WATER NO. B-01 SEWER NO. 2420000 TEST GRADIENT: 550	TYPE OF BUILDINGS: SINGLE FAMILY TOWNHOMES DRAINAGE AREA: DEEP RUN, PATAPSCO TREATMENT PLANT: PATAPSCO WATERSWER TREATMENT PLANT NUMBER OF BUILDABLE LOTS: 65 NUMBER OF NON-BUILDABLE LOTS: 0 NUMBER OF W.H.C.: 65 + 17 W.H.C FOR FUTURE LOTS (14 IN PHASE III-B, 3 IN PHASE III-A)
---	--



VICINITY MAP
 SCALE: 1" = 2000'

GENERAL NOTES

- PART I**
- APPROXIMATE LOCATIONS OF EXISTING MAINS ARE SHOWN. THE CONTRACTOR SHALL TAKE ALL NECESSARY PRECAUTIONS TO PROTECT EXISTING MAINS AND SERVICES AND MAINTAIN UNINTERRUPTED SUPPLY. ANY DAMAGE INCURRED SHALL BE REPAIRED IMMEDIATELY TO THE SATISFACTION OF THE ENGINEER AT THE CONTRACTOR'S EXPENSE.
 - TOPOGRAPHIC SURVEYS WERE PERFORMED BY MORRIS & RITCHE ASSOCIATES, INC. IN JUNE, 2006.
 - HORIZONTAL AND VERTICAL SURVEY CONTROLS:
 - ALL HORIZONTAL CONTROLS ARE BASED ON MARYLAND STATE COORDINATES, NAD 83/91.
 - ALL VERTICAL CONTROLS ARE BASED ON NAVD 88.
 - ALL PIPE ELEVATIONS SHOWN ARE INVERT ELEVATIONS, UNLESS OTHERWISE NOTED ON THE PLANS.
 - CLEAR ALL UTILITIES BY A MINIMUM OF 12 INCHES. CLEAR ALL POLES BY 5'-0" MINIMUM OR TUNNEL AS REQUIRED UNLESS OTHERWISE NOTED. THE OWNER HAS CONTACTED THE UTILITY COMPANIES AND HAS MADE ARRANGEMENTS FOR BRACING OF POLES AS SHOWN ON THE DRAWINGS. IN THE EVENT THE CONTRACTOR'S WORK REQUIRES THE BRACING OF ADDITIONAL POLES, ANY COST INCURRED BY THE OWNER FOR THE BRACING OF ADDITIONAL POLES OR DAMAGES SHALL BE DEDUCTED FROM MONIES OWED THE CONTRACTOR. THE CONTRACTOR SHALL COORDINATE WITH THE UTILITY COMPANIES TO SCHEDULE THE BRACING OF THE POLES.
 - FOR DETAILS NOT SHOWN ON THE DRAWING, AND FOR MATERIALS AND CONSTRUCTION METHODS, USE HOWARD COUNTY DESIGN MANUAL, VOLUME IV, STANDARD SPECIFICATIONS AND DETAILS FOR CONSTRUCTION (LATEST EDITION). THE CONTRACTOR SHALL HAVE A COPY OF VOLUME IV ON THE PROJECT SITE.
 - WHERE TEST PITS HAVE BEEN MADE ON EXISTING UTILITIES, THEY ARE NOTED BY THE SYMBOL AT THE LOCATIONS OF THE TEST PITS. A NOTE OR NOTES CONTAINING THE RESULTS OF THE TEST PIT OR PITS IS INCLUDED ON THE DRAWING. EXISTING UTILITIES IN THE VICINITY OF THE PROPOSED WORK FOR WHICH TEST PITS HAVE NOT BEEN DUG SHALL BE LOCATED BY THE CONTRACTOR TWO WEEKS IN ADVANCE OF CONSTRUCTION OPERATIONS AT HIS OWN EXPENSE.
 - THE CONTRACTOR SHALL NOTIFY THE FOLLOWING UTILITY COMPANIES OR AGENCIES AT LEAST FIVE WORKING DAYS BEFORE STARTING WORK SHOWN ON THESE PLANS:
 - AT&T 1-800-252-1133
 - BGE (CONTRACTOR SERVICES) 410-850-4620
 - BGE (UNDERGROUND DAMAGE CONTROL) 410-787-9068
 - BUREAU OF UTILITIES 410-513-4800
 - COLONIAL PIPELINE CO 410-795-1390
 - MISS UTILITY 1-800-257-7777
 - STATE HIGHWAY ADMINISTRATION 410-531-5533
 - VERIZON 1-800-743-0033/ 410-224-9210
 - TREES AND SHRUBS ARE TO BE PROTECTED FROM DAMAGE TO THE MAXIMUM EXTENT. TREES AND SHRUBS LOCATED WITHIN THE CONSTRUCTION STRIP ARE NOT TO BE REMOVED OR DAMAGED BY THE CONTRACTOR.
 - THE CONTRACTOR SHALL REMOVE TREES, STUMPS AND ROOTS ALONG THE LINE OF EXCAVATION. PAYMENT FOR SUCH REMOVAL SHALL BE INCLUDED IN THE UNIT PRICE BID FOR CONSTRUCTION OF THE MAIN.
 - THE CONTRACTOR SHALL NOTIFY THE BUREAU OF HIGHWAYS, HOWARD COUNTY, AT (410)-313-7450 AT LEAST FIVE WORKING DAYS BEFORE OPEN CUTTING OR BORING/JACKING OF ANY COUNTY ROAD FOR LAYING WATER/SEWER MAINS OR HOUSE CONNECTIONS. THE APPROVAL OF THESE DRAWINGS WILL CONSTITUTE COMPLIANCE WITH DPW REQUIREMENTS PER SECTION 18.11(A) OF THE HOWARD COUNTY CODE.
- PART II WATER**
- ALL WATER MAINS SHALL BE D.I.P. CLASS 54, UNLESS OTHERWISE NOTED.
 - TOPS OF ALL WATER MAINS SHALL HAVE A MINIMUM OF 3'-6" OF COVER, UNLESS OTHERWISE NOTED. THE MAXIMUM DEPTH OF WATER MAIN SHALL NOT EXCEED 8'.
 - VALVES ADJACENT TO TEES SHALL BE STRAPPED TO TEES.
 - ALL FITTINGS SHALL BE BUTRESSED OR ANCHORED WITH CONCRETE IN ACCORDANCE WITH STANDARD DETAILS, UNLESS OTHERWISE PROVIDED FOR ON THE DRAWINGS.
 - FIRE HYDRANTS SHALL BE SET TO THE BURY LINE ELEVATIONS SHOWN ON THE DRAWINGS. ALL FIRE HYDRANTS SHALL BE INSTALLED IN ACCORDANCE WITH STANDARD DETAILS. THE SOIL AROUND THE FIRE HYDRANT SHALL BE COMPACTED IN ACCORDANCE WITH SECTION 1005 OF THE STANDARD SPECIFICATIONS.
 - THE CONTRACTOR SHALL NOT OPERATE ANY WATER MAIN VALVES ON THE EXISTING WATER SYSTEM.
 - ALL WATER HOUSE CONNECTIONS SHALL BE FOR INSIDE METER SETTING, UNLESS OTHERWISE NOTED ON PLANS OR IN SPECIFICATIONS.
 - ALL TOWNHOMES SHALL HAVE A 1.5" WATER HOUSE CONNECTIONS AND A 1" OUTSIDE METER SETTING.

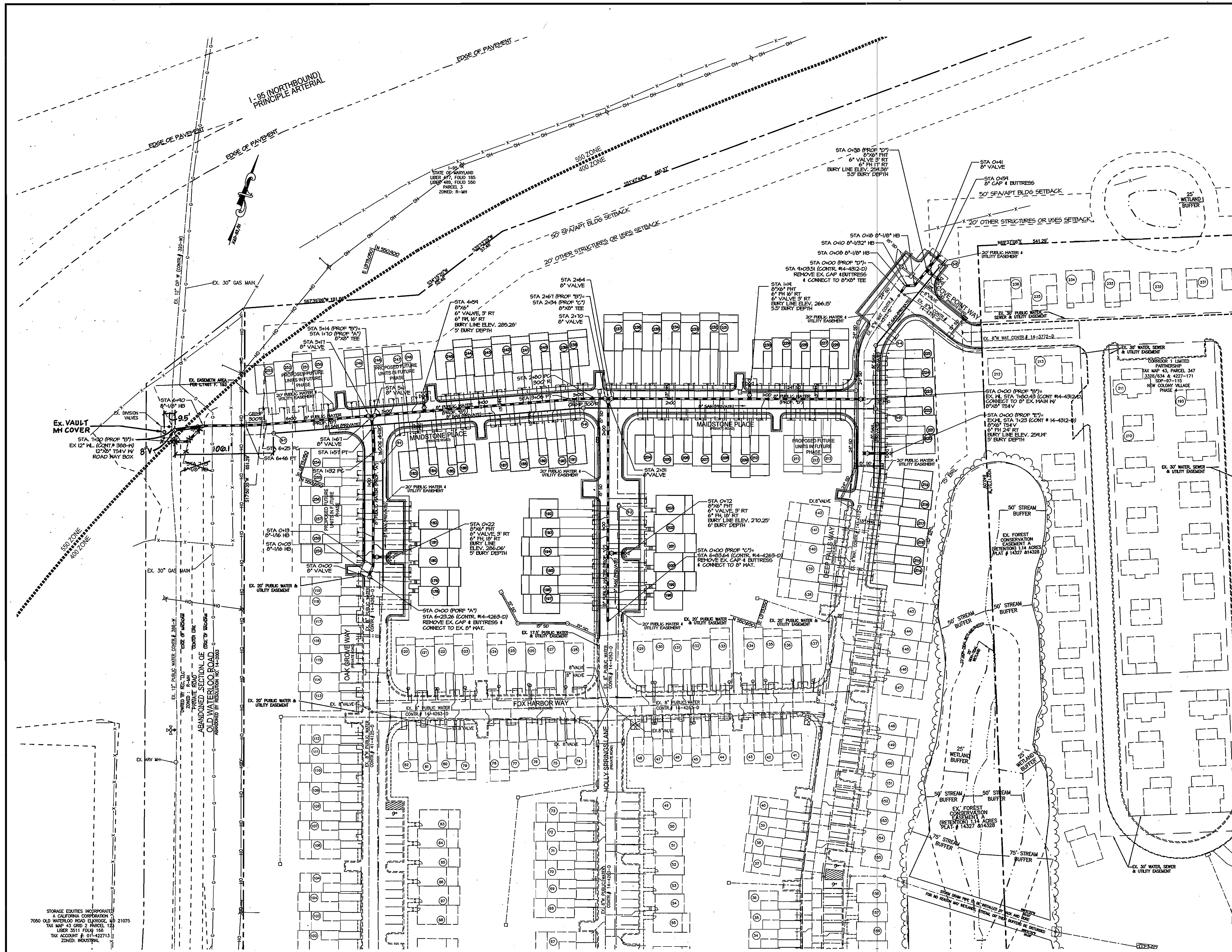
BENCHMARKS

STATION : 43A2
 N 550,784.342654
 E 1,372,040.182420
 ELEVATION: 292.55

STATION : 43A1
 N 552,081.810532
 E 1,370,625.809590
 ELEVATION: 306.79

AS BUILT
 DATE: SEPTEMBER 2008

<p>DEPARTMENT OF PUBLIC WORKS HOWARD COUNTY, MARYLAND</p> <p><i>John C. Com</i> 1/16/08 CHIEF, BUREAU OF UTILITIES DATE</p>	<p>DEPARTMENT OF PLANNING & ZONING HOWARD COUNTY, MARYLAND</p> <p><i>[Signature]</i> 1/16/08 CHIEF, DEVELOPMENT ENGINEERING DIVISION DATE</p>	<p>MRA MORRIS & RITCHE ASSOCIATES, INC. ENGINEERS, PLANNERS, SURVEYORS AND LANDSCAPE ARCHITECTS</p> <p>14280 PARK CENTER DRIVE, SUITE A LAUREL, MARYLAND 20707 (410) 792-8782 or (301) 776-1690 FAX (410) 792-7395</p>	<p>MD PROFESSIONAL CERTIFICATION</p> <p>I HEREBY CERTIFY THAT THESE DOCUMENTS WERE PREPARED OR APPROVED BY ME, AND THAT I AM A DULY LICENSED PROFESSIONAL ENGINEER UNDER THE LAWS OF THE STATE OF MARYLAND, LICENSE NO. 29203, EXPIRATION DATE: 6/16/09.</p> <p>DES: JCW DRN: JCW CHK: TCN DATE: 12/14/07</p>	<table border="1" style="width: 100%; border-collapse: collapse;"> <thead> <tr> <th>BY</th> <th>NO.</th> <th>REVISIONS</th> <th>DATE</th> </tr> </thead> <tbody> <tr> <td> </td> <td> </td> <td> </td> <td> </td> </tr> </tbody> </table>	BY	NO.	REVISIONS	DATE					<p>TITLE SHEET</p> <p>600' SCALE MAP NO. 43 BLOCK NO. 3</p>	<p style="text-align: center;">VILLAGE TOWNS PHASE III-A, UNITS 178 THRU 245 CONTRACT NO. 44-4490-D</p> <p style="text-align: center;">LIBER: 8264 ~ FOLIO: 674 ZONED: R-MH ~ TAX MAP: 43 ~ GRID: 3 ~ PARCEL: 3 1ST ELECTION DISTRICT ~ HOWARD COUNTY, MARYLAND</p> <p style="text-align: right;">SCALE: AS SHOWN SHEET 1 OF 3</p>
BY	NO.	REVISIONS	DATE											



LEGEND

- EX. PROPERTY LINE
- EX. RIGHT OF WAY DEDICATION
- EX. TREELINE
- EX. PAVEMENT/CONCRETE
- EX. CURB
- EX. BUILDING
- EX. EASEMENT
- EX. FENCE
- EX. STORM DRAIN
- EX. SANITARY
- EX. UG ELECTRIC
- EX. UG TELEPHONE
- EX. WATER LINE
- EX. GAS LINE
- EX. WATER METER
- EX. WATER VALVE
- EX. FIRE HYDRANT
- EX. REDUCER
- EX. UTILITY POLE
- PROP. BUILDING
- PROP. EASEMENT
- PROP. TREELINE
- PROP. CURB & GUTTER
- PROP. CONCRETE WALK
- PROP. SANITARY LINE
- PROP. STORM DRAIN LINE
- PROP. WATER LINE (PUBLIC)
- PROP. PUBLIC WATER & UTILITY EASEMENT
- PROP. FIRE HYDRANT
- PROP. WATER VALVE

NOTE:
 (+) LOCATION OF WHO AT STATION OF 8" WATER MAIN.
 (+/-) LOCATION OF WATER METER RELATIVE TO WATER MAIN STATION.

WATER METER CHART

UNIT #	WHO STATION (+)	WATER METER STATION (+)	OFFSET (10' OF 8" MAIN)	TOP ELEVATION
HOLLY SPRINGS LANE				
197	0+15	0+17	15' (LT)	268.89
198	0+23	0+23	39' (RT)	268.95
199	0+30	0+33	39' (RT)	269.61
196	0+45	0+45	15' (LT)	269.54
195	0+59	0+60	15' (LT)	269.86
200	0+67	0+62	39' (RT)	270.26
201	0+82	0+82	39' (RT)	270.73
194	0+89	0+87	15' (LT)	270.46
202	1+01	1+01	39' (RT)	271.15
193	1+09	1+07	15' (LT)	270.91
192	1+21	1+21	15' (LT)	271.24
203	1+29	1+29	39' (RT)	271.77
DEEP FALLS WAY				
214**	5+97	5+97	25' (RT)	256.42
215**	6+31	6+31	25' (RT)	257.09
216**	6+51	6+51	25' (RT)	258.03
217**	6+71	6+71	25' (RT)	258.03
218**	6+85	6+85	25' (RT)	258.17
219**	7+05	7+05	24' (RT)	258.31
220**	7+31	7+30	23' (RT)	259.10
221**	7+61	7+61	24' (RT)	259.70
222**	7+75	7+81	24' (RT)	260.10
223**	8+01	8+01	24' (RT)	260.49
224**	8+21	8+21	24' (RT)	260.75
225**	8+61	8+61	23' (RT)	260.25
MADSTONE PLACE				
226	0+17	0+17	20' (RT)	259.92
213	0+24	0+24	22' (LT)	260.32
227	0+48	0+48	15' (RT)	261.56
212	0+56	0+56	22' (LT)	265.00
228	0+69	0+69	15' (RT)	262.65
211	0+76	0+76	22' (LT)	263.04
229	0+88	0+88	15' (RT)	263.66
210	1+04	1+07	22' (LT)	264.65
230	1+12	1+12	15' (RT)	264.90
209	1+31	1+31	22' (LT)	265.98
231	1+40	1+40	15' (RT)	266.38
208	1+51	1+51	22' (LT)	266.94
232	1+63	1+63	15' (RT)	267.62
207	1+71	1+71	22' (LT)	268.01
233	1+83	1+83	15' (RT)	268.60
206	1+91	1+91	22' (LT)	269.04
234	2+03	2+03	15' (RT)	269.72
205	2+11	2+11	22' (LT)	270.11
235	2+23	2+23	15' (RT)	270.71
204	2+31	2+31	22' (LT)	271.16
236	2+43	2+43	15' (RT)	271.82
237	2+61	2+63	15' (RT)	272.90
238	2+93	2+93	15' (RT)	274.55
191	3+02	3+02	22' (LT)	275.12
239	3+16	3+16	15' (RT)	275.91
190	3+23	3+26	22' (LT)	276.36
240	3+36	3+36	15' (RT)	277.11
189	3+43	3+46	22' (LT)	277.76
241	3+56	3+56	15' (RT)	278.32
188	3+66	3+66	22' (LT)	278.93
242	3+82	3+82	15' (RT)	279.89
187	3+89	3+86	22' (LT)	280.16
243	4+02	4+02	15' (RT)	281.09
186	4+14	4+18	22' (LT)	282.04
244	4+22	4+22	15' (RT)	282.29
245	4+36	4+36	15' (RT)	283.11
185	4+48	4+48	22' (LT)	283.84
184	4+64	4+68	23' (LT)	285.04
246	4+72	4+66	15' (RT)	284.96
183	4+87	4+87	23' (LT)	286.18
247	4+94	4+90	15' (RT)	286.40
182	5+06	5+10	15' (RT)	287.31
249	5+34	5+34	15' (RT)	289.19
181	5+59	5+59	15' (RT)	290.17
251	5+85	5+85	15' (RT)	292.03
180	6+05	6+05	15' (RT)	293.21
253	6+26	6+26	15' (RT)	294.83
OAK GROVE WAY				
178*	0-28	0-28	42' (RT)	285.30
179	0+07	0+05	42' (RT)	285.79
259	0+27	0+23	16' (LT)	285.74
180	0+35	0+30	39' (RT)	286.13
258	0+44	0+47	15' (LT)	286.04
181	0+52	0+52	39' (LT)	286.44
257	0+67	0+67	16' (LT)	286.31
182	0+75	0+75	39' (RT)	286.72
256	0+87	0+87	16' (LT)	286.59
255	1+07	1+07	16' (LT)	286.88
254	1+27	1+27	16' (LT)	287.16

8" WATER MAIN TABULATION CHART

APPURTENANCE	ROAD NAME OR NORTHING & EASTING	WATER MAIN STATION	OFFSET
8"x6" TSV	DEEP FALLS WAY	7+23	----
6" FIRE HYDRANT	DEEP FALLS WAY	7+23	24' RT.
8"x8" TSV	DEEP FALLS WAY	7+80	----
8"-1/8" LVB	DEEP FALLS WAY	0+00	----
8"-1/8" LVB	DEEP FALLS WAY	0+03	----
8"-1/8" H.B.	DEEP FALLS WAY	0+08	----
8"-1/32" H.B.	DEEP FALLS WAY	0+10	----
8"-1/8" H.B.	DEEP FALLS WAY	0+18	----
8"-1/8" LVB	DEEP FALLS WAY	0+29	----
8"-1/8" LVB	DEEP FALLS WAY	0+31	----
8"x6" FHT & VALVE	DEEP FALLS WAY	0+38	3' LT.
6" FIRE HYDRANT	DEEP FALLS WAY	0+38	17' RT.
8" VALVE	DEEP FALLS WAY	0+41	----
8" CAP & BUTTRISS	DEEP FALLS WAY	0+59	----
8"x6" FHT & VALVE	MADSTONE PLACE	1+19	3' RT.
6" FIRE HYDRANT	MADSTONE PLACE	1+19	16' RT.
8" VALVE	MADSTONE PLACE	2+64	----
8"x8" TEE	MADSTONE PLACE	2+67	----
8" VALVE	MADSTONE PLACE	2+67	3' LT.
8" VALVE	MADSTONE PLACE	2+70	----
8"x6" FHT & VALVE	MADSTONE PLACE	4+59	3' RT.
6" FIRE HYDRANT	MADSTONE PLACE	4+59	16' RT.
8" VALVE	MADSTONE PLACE	5+11	----
8"x8" TEE	MADSTONE PLACE	5+14	----
8" VALVE	MADSTONE PLACE	5+14	3' LT.
8" VALVE	MADSTONE PLACE	5+17	----
8"-1/8" H.B.	MADSTONE PLACE	6+96	----
8"-1/8" H.B.	MADSTONE PLACE	7+19	----
8"x12" TSV	MADSTONE PLACE	7+30	----
8"-1/16" H.B.	OAK GROVE WAY	0+03	----
8"-1/16" H.B.	OAK GROVE WAY	0+13	----
8"x6" FHT & VALVE	OAK GROVE WAY	0+22	3' RT.
6" FIRE HYDRANT	OAK GROVE WAY	0+22	18' RT.
8"x6" FHT & VALVE	HOLLY SPRINGS LANE	0+72	3' RT.
6" FIRE HYDRANT	HOLLY SPRINGS LANE	0+72	18' RT.

NOTE:
 WATER HOUSE CONNECTION OF UNIT 178 CONNECTS TO EXISTING 8" PUBLIC WATER MAIN CONTR. # 14-4263-D AT STA. 0-28 FROM START OF PROFILE "A".
 WATER HOUSE CONNECTION OF UNITS 214 THRU 225 CONNECT TO EXISTING 8" PUBLIC WATER MAIN CONTR. # 14-4312-D. FOR THESE UNITS, STATIONING ON CHART IS PER CONTR. #14-4312-D.

AS BUILT
 DATE: SEPTEMBER 2008

PLAN REFERENCE NUMBERS
 SDP-07-103

DEPARTMENT OF PUBLIC WORKS
 HOWARD COUNTY, MARYLAND
 CHIEF, BUREAU OF UTILITIES
 DATE: 11/20/08

DEPARTMENT OF PLANNING & ZONING
 HOWARD COUNTY, MARYLAND
 CHIEF, DEVELOPMENT ENGINEERING DIVISION
 DATE: 11/20/08

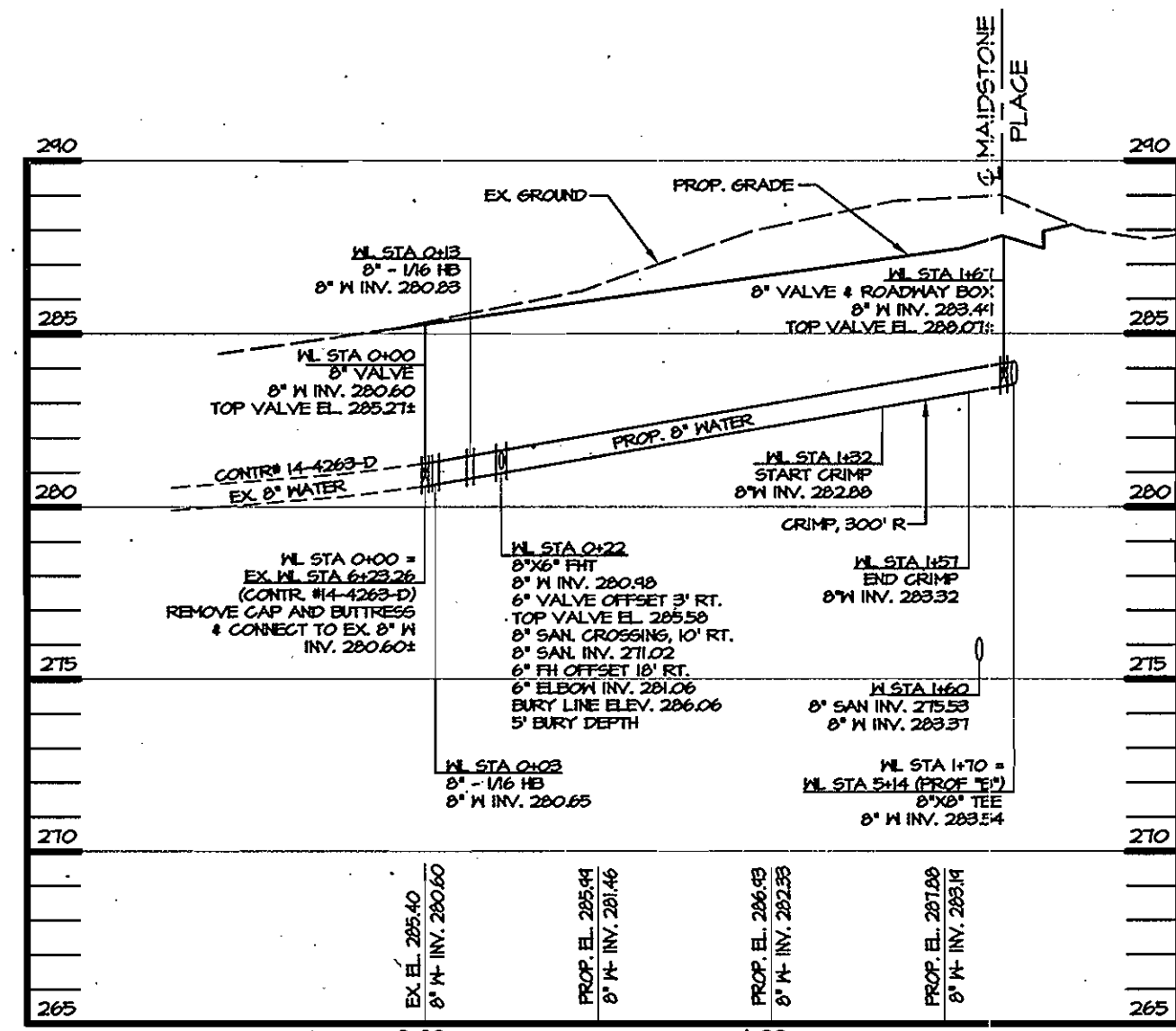
MORRIS & RITCHE ASSOCIATES, INC.
 ENGINEERS, PLANNERS, SURVEYORS AND LANDSCAPE ARCHITECTS
 14280 PARK CENTER DRIVE, SUITE A
 LAUREL, MARYLAND 20707
 (410) 792-9792 or (301) 776-1890
 FAX (410) 792-7395

STATE OF MARYLAND
 PROFESSIONAL ENGINEER
 I HEREBY CERTIFY THAT THESE DOCUMENTS WERE PREPARED OR APPROVED BY ME, AND THAT I AM A DULY LICENSED PROFESSIONAL ENGINEER UNDER THE LAWS OF THE STATE OF MARYLAND, LICENSE NO. 29203, EXPIRATION DATE: 6/16/09.

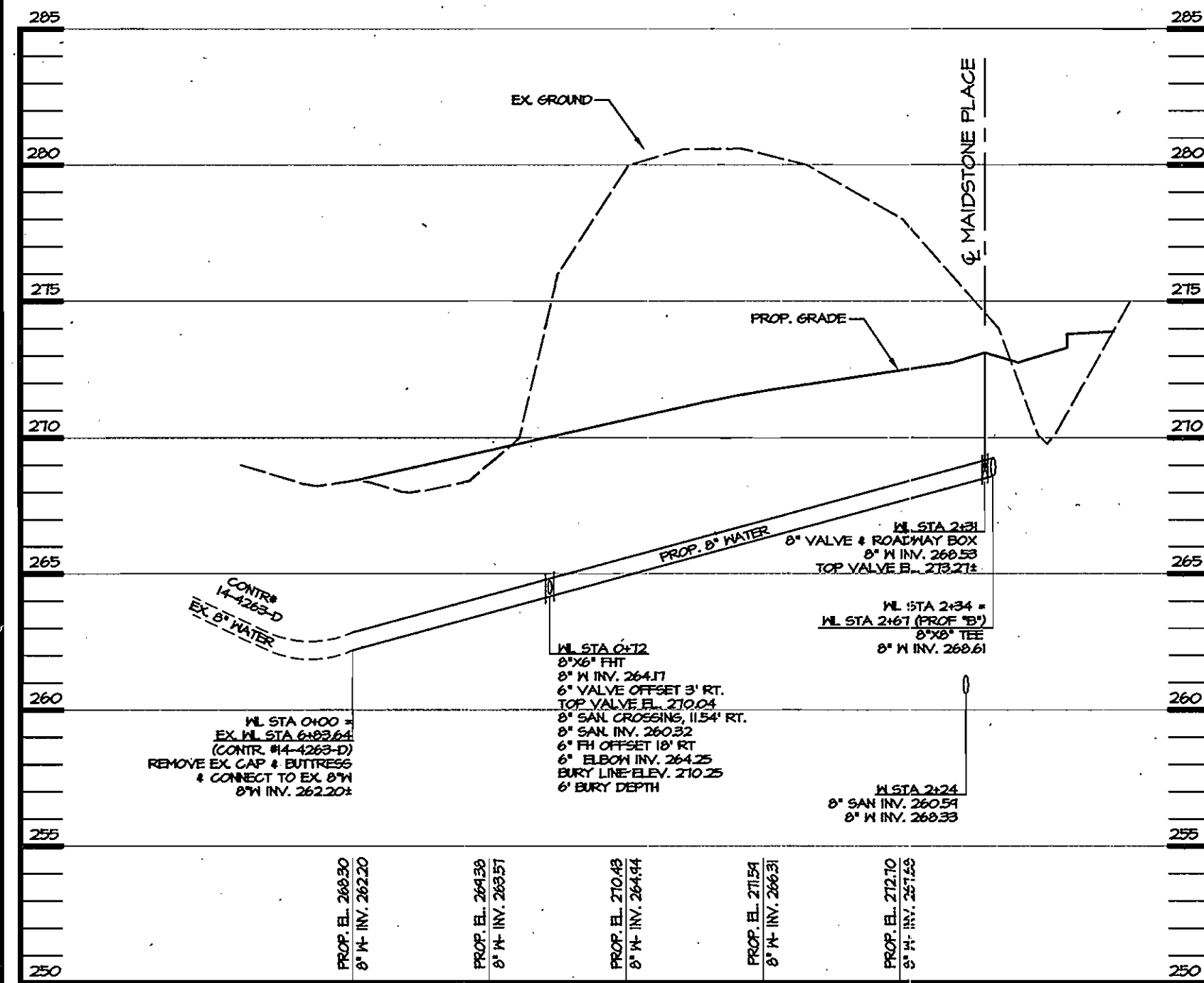
DES: JCW	BY NO.	REVISIONS	DATE
DRN: JCW			
CHK: TCN			
DATE: 12/14/07			

WATER PLAN
 600' SCALE MAP NO. 43 BLOCK NO. 3

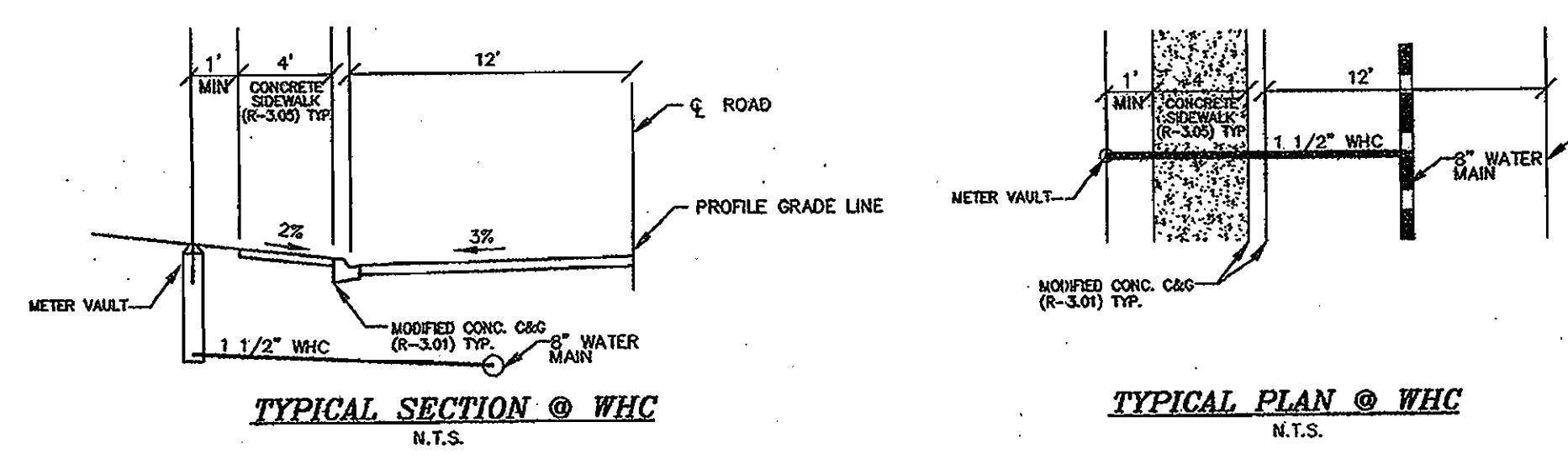
VILLAGE TOWNS
 PHASE III-A, UNITS 178 THRU 245
 CONTRACT NO. 44-4490-D
 LIBER: S264 ~ FOLIO: 674
 ZONED: R-MH ~ TAX MAP: 43 ~ GRID: 3 ~ PARCEL: 3
 1ST ELECTION DISTRICT ~ HOWARD COUNTY, MARYLAND
 SCALE: AS 1" = 50'
 SHEET 2 OF 3



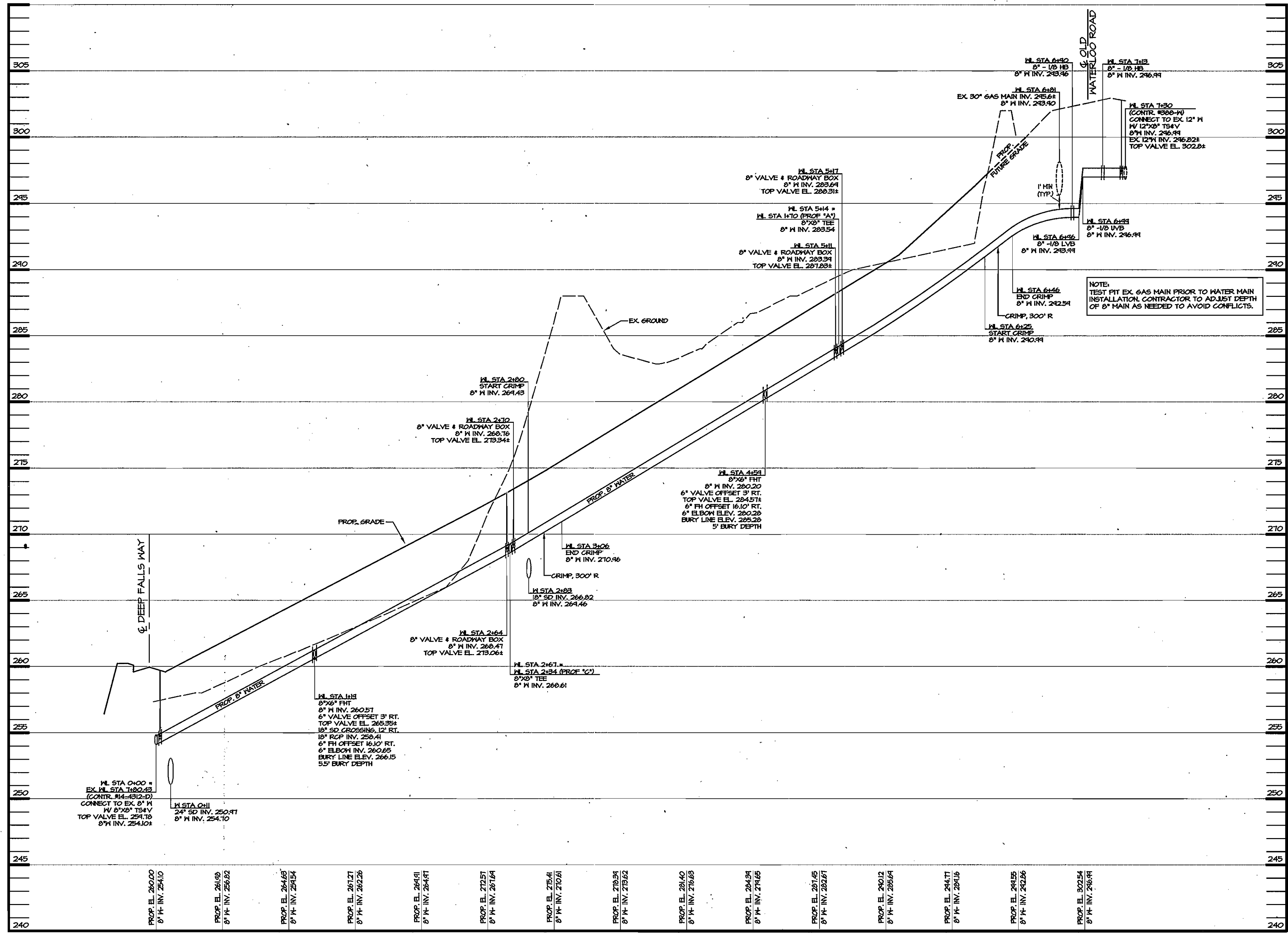
WATER PROFILE 'A'
SCALE: HORIZ. 1" = 50'
VERT. 1" = 5'



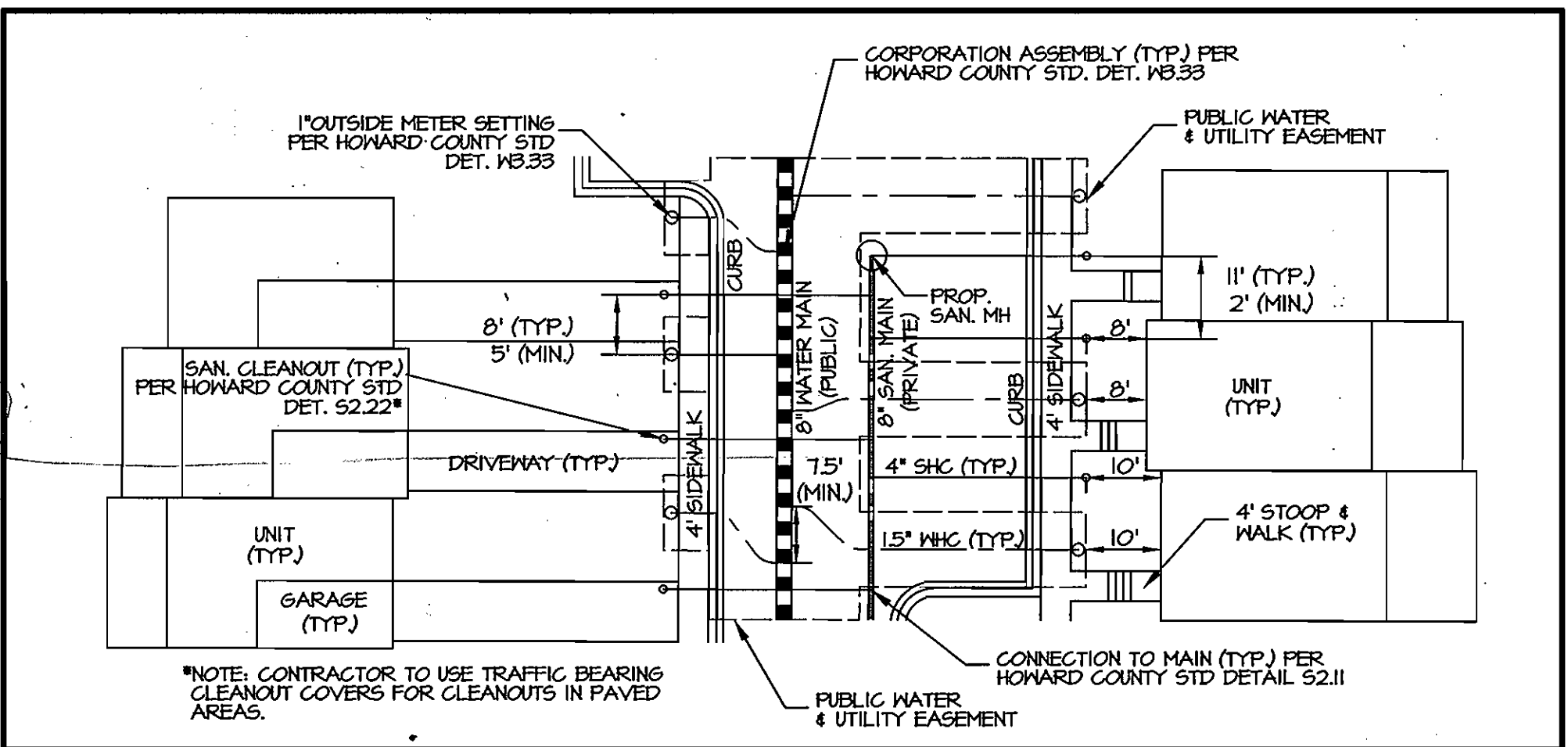
WATER PROFILE 'C'
SCALE: HORIZ. 1" = 50'
VERT. 1" = 5'



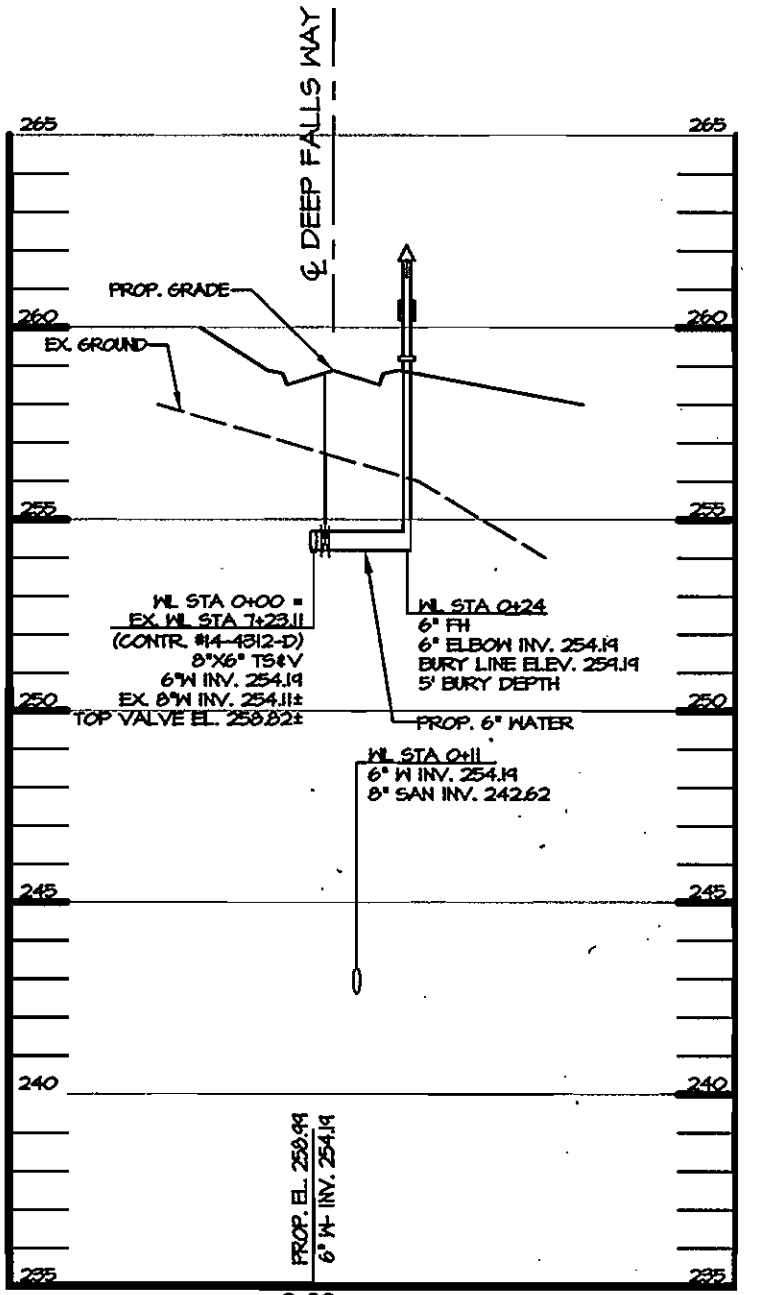
TYPICAL SECTION @ WHC
N.T.S.



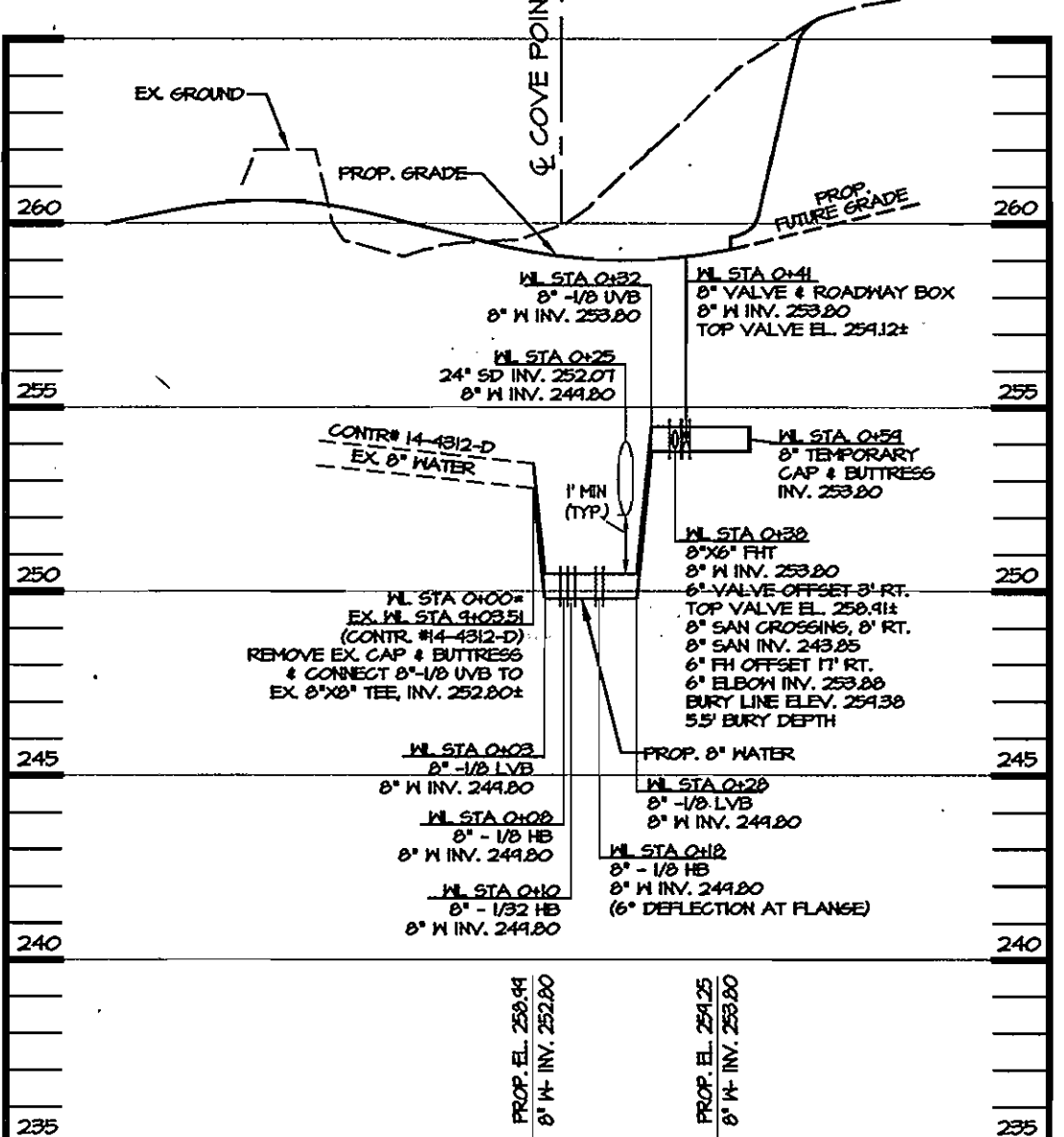
WATER PROFILE 'B'
SCALE: HORIZ. 1" = 50'
VERT. 1" = 5'



SERVICE CONNECTION DETAIL
SCALE: 1" = 20'



F.H. PROFILE 'E'
SCALE: HORIZ. 1" = 50'
VERT. 1" = 5'



WATER PROFILE 'D'
SCALE: HORIZ. 1" = 50'
VERT. 1" = 5'

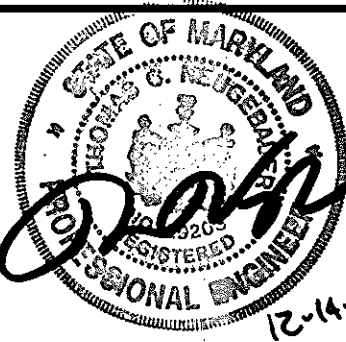
AS BUILT
DATE: SEPTEMBER 2008

PLAN REFERENCE NUMBERS
SDP-07-103

DEPARTMENT OF PUBLIC WORKS
HOWARD COUNTY, MARYLAND
CHIEF, BUREAU OF UTILITIES
DATE: 11/10/08

DEPARTMENT OF PLANNING & ZONING
HOWARD COUNTY, MARYLAND
CHIEF, DEVELOPMENT ENGINEERING DIVISION
DATE: 11/27/08

MORRIS & FITCHE ASSOCIATES, INC.
ENGINEERS, PLANNERS, SURVEYORS AND LANDSCAPE ARCHITECTS
14280 PARK CENTER DRIVE, SUITE A
LAUREL, MARYLAND 20707
(410) 792-8792 or (301) 778-1690
FAX (410) 792-7395



MD PROFESSIONAL CERTIFICATION
I HEREBY CERTIFY THAT THESE DOCUMENTS WERE PREPARED OR APPROVED BY ME, AND THAT I AM A DULY LICENSED PROFESSIONAL ENGINEER UNDER THE LAWS OF THE STATE OF MARYLAND, LICENSE NO. 22203, EXPIRATION DATE: 6/16/09.
DES: JCW
BY NO.
REVISIONS
DATE: 12/14/07

DES.	BY NO.	REVISIONS	DATE
JCW			
JCW			
TCN			

WATER PROFILES
600' SCALE MAP NO. 43 BLOCK NO. 3

VILLAGE TOWNS
PHASE III-A, UNITS 178 THRU 245
CONTRACT NO. 44-4490-D
LIBER: 6264 ~ FOLIO: 874
TAX MAP: 43 ~ GRID: 3 ~ PARCEL: 3
ZONED: R-MH ~ 1ST ELECTION DISTRICT ~ HOWARD COUNTY, MARYLAND
SCALE: AS SHOWN
SHEET 3 OF 3

WATER & SEWER AS BUILT PREPARATION

LOT #	FROM	TO	DISTANCE	REMARKS
225	S-3 MH	SHC	56.3'	DEEP FALLS WAY
	M-5 MH	SHC	51.3'	
225	S-3 MH	WHC	66.4'	
	M-5 MH	WHC	62.1'	
224	S-3 MH	SHC	38.7'	
	M-5 MH	SHC	38.8'	
224	S-3 MH	WHC	47.0'	▼
	M-5 MH	WHC	44.5'	
223	S-3 MH	SHC	19.0'	
	M-5 MH	SHC	32.2'	
223	S-3 MH	WHC	27.1'	
	M-5 MH	WHC	32.6'	
222	I-3 INLET	SHC	61.1'	
	S-3 MH	SHC	10.4'	
222	I-3 INLET	WHC	71.7'	▼
	S-3 MH	WHC	12.6'	
221	I-3 INLET	SHC	39.9'	
	S-3 MH	SHC	23.7'	
221	I-3 INLET	WHC	51.0'	
	S-3 MH	WHC	15.8'	
220	I-3 INLET	SHC	29.9'	
	S-3 MH	SHC	33.4'	
220	I-3 INLET	WHC	18.5'	▼
	S-3 MH	WHC	43.2'	
219	I-3 INLET	SHC	18.6'	
	EX-9 MH	SHC	51.8'	
219	I-3 INLET	WHC	9.9'	
	EX-9 MH	WHC	47.1'	
218	I-3 INLET	SHC	31.5'	
	EX-9 MH	SHC	43.2'	
218	I-3 INLET	WHC	27.7'	▼
	EX-9 MH	WHC	42.0'	

LOT #	FROM	TO	DISTANCE	REMARKS
217	I-3 INLET	SHC	52.4'	DEEP FALLS WAY
	EX-9 MH	SHC	42.9'	
217	I-3 INLET	WHC	40.3'	
	EX-9 MH	WHC	48.2'	
216	I-3 INLET	SHC	72.8'	
	EX-9 MH	SHC	45.1'	
216	I-3 INLET	WHC	60.6'	▼
	EX-9 MH	WHC	50.7'	
215	I-3 INLET	SHC	91.7'	
	EX-9 MH	SHC	68.5'	
215	I-3 INLET	WHC	81.6'	
	EX-9 MH	WHC	61.1'	
214	I-3 INLET	SHC	100.0'	
	EX-9 MH	SHC	75.3'	
214	I-3 INLET	WHC	112.0'	▼
	EX-9 MH	WHC	87.2'	
236	I-7 INLET	SHC	105.7'	MAIDSTONE PL
	I-31 INLET	SHC	38.3'	
236	I-7 INLET	WHC	109.6'	
	I-31 INLET	WHC	32.6'	
235	I-7 INLET	SHC	87.5'	
	I-31 INLET	SHC	56.7'	
235	I-7 INLET	WHC	93.3'	▼
	I-31 INLET	WHC	51.4'	
234	I-7 INLET	SHC	66.4'	
	I-31 INLET	SHC	78.3'	
234	I-7 INLET	WHC	72.0'	
	I-31 INLET	WHC	71.8'	
233	I-7 INLET	SHC	46.1'	
	I-31 INLET	SHC	98.0'	
233	I-7 INLET	WHC	53.2'	▼
	I-31 INLET	WHC	91.3'	

LOT #	FROM	TO	DISTANCE	REMARKS
232	I-7 INLET	SHC	27.3'	MAIDSTONE PL.
	I-31 INLET	SHC	114.7'	
232	I-7 INLET	WHC	33.4'	
	I-31 INLET	WHC	109.3'	
231	I-7 INLET	SHC	18.8'	
	I-31 INLET	SHC	134.6'	
231	I-7 INLET	WHC	12.5'	
	I-31 INLET	WHC	140.7'	
210	I-7 INLET	SHC	30.0'	▼
	I-31 INLET	SHC	154.4'	
210	I-7 INLET	WHC	35.6'	
	I-31 INLET	WHC	149.7'	
209	I-7 INLET	SHC	28.2'	
	I-31 INLET	SHC	139.7'	
209	I-7 INLET	WHC	27.5'	
	I-31 INLET	WHC	133.4'	
208	I-7 INLET	SHC	30.5'	
	I-31 INLET	SHC	123.7'	
208	I-7 INLET	WHC	34.5'	▼
	I-31 INLET	WHC	118.7'	
207	I-7 INLET	SHC	42.3'	
	I-31 INLET	SHC	107.9'	
207	I-7 INLET	WHC	48.7'	
	I-31 INLET	WHC	104.3'	
206	I-7 INLET	SHC	59.0'	
	I-31 INLET	SHC	100.9'	
206	I-7 INLET	WHC	66.4'	
	I-31 INLET	WHC	88.6'	
205	I-7 INLET	SHC	77.8'	
	I-31 INLET	SHC	78.1'	
205	I-7 INLET	WHC	85.2'	▼
	I-31 INLET	WHC	70.7'	

LOT #	FROM	TO	DISTANCE	REMARKS
204	I-7 INLET	SHC	99.7'	MAIDSTONE PL.
	I-31 INLET	SHC	57.3'	
204	I-7 INLET	WHC	104.1'	
	I-31 INLET	WHC	57.6'	
230	M-5 MH	SHC	91.4'	
	I-7 INLET	SHC	30.3'	
230	M-5 MH	WHC	102.3'	▼
	I-7 INLET	WHC	20.1'	
229	M-5 MH	SHC	75.0'	
	I-7 INLET	SHC	46.6'	
229	M-5 MH	WHC	81.3'	
	I-7 INLET	WHC	40.3'	
228	M-5 MH	SHC	57.2'	
	I-7 INLET	SHC	60.4'	
228	M-5 MH	WHC	63.3'	▼
	I-7 INLET	WHC	58.0'	
227	M-5 MH	SHC	32.5'	
	I-7 INLET	SHC	88.6'	
227	M-5 MH	WHC	40.4'	
	I-7 INLET	WHC	81.5'	
226	M-5 MH	SHC	22.6'	
	I-7 INLET	SHC	98.6'	
226	M-5 MH	WHC	14.7'	▼
	I-7 INLET	WHC	108.5'	
254	STA 0+22 FH	SHC	103.6'	OAKGROVE WAY
	S-1 MH	SHC	28.6'	
254	STA 0+22 FH	WHC	107.4'	▼
	S-1 MH	WHC	28.0'	
211	M-5 MH	SHC	65.4'	MAIDSTONE PL.
	I-7 INLET	SHC	67.2'	
211	M-5 MH	WHC	73.4'	
	I-7 INLET	WHC	59.4'	

LOT #	FROM	TO	DISTANCE	REMARKS
212	M-5 MH	SHC	51.8'	MAIDSTONE PL.
	I-7 INLET	SHC	56.6'	
212	M-5 MH	WHC	77.0'	
	I-7 INLET	WHC	55.7'	
213	M-5 MH	SHC	40.9'	
	I-7 INLET	SHC	95.1'	
213	M-5 MH	WHC	33.5'	▼
	I-7 INLET	WHC	104.6'	

VALVES	FROM	TO	DISTANCE	REMARKS
OAKGROVE WAY	8" VALVE	STA 0+22 FH	24.0'	STA 0+00
	" "	EX-24 MH	18.5'	
6" VALVE	FH	6" VALVE	16.0'	STA 0+22
	EX-24 MH	" "	29.5'	
8" VALVE	STA 4+59 FH	8" VALVE	56.5'	STA 1+67
	S-7 MH	" "	104.0'	
MAIDSTONE PL	8" VALVE	VAULT MH COVER	9.5'	STA 7+30
	" "	S-7	106.1'	
8" VALVE	STA 4+59 FH	8" VALVE	58.4'	STA 5+17
	S-7 MH	" "	102.3'	
8" VALVE	STA 4+59 FH	8" VALVE	51.0'	STA 5+11
	6" VALVE 4+59	" "	49.4'	
6" VALVE	8" VALVE 5+11	6" VALVE	49.4'	STA 4+59
	FH	" "	14.4'	
8" VALVE	I-31 INLET	8" VALVE	7.8'	STA 2+70
	S-6 MH	" "	21.2'	
8" VALVE	I-31 INLET	8" VALVE	13.0'	STA 2+64
	S-6 MH	" "	28.4'	
6" VALVE	FH	6" VALVE	15.4'	STA 1+19
	I-31 INLET	" "	16.1'	
8" VALVE	S-3 MH	8" VALVE	13.7'	STA 0+00
	M-5 MH	" "	9.9'	


AS BUILT
DATE: SEPTEMBER 2008

FOR AS BUILT PURPOSES

PLAN REFERENCE NUMBERS
SDP-03-102
SDP-07-103

DEPARTMENT OF PUBLIC WORKS
HOWARD COUNTY, MARYLAND

DEPARTMENT OF PLANNING AND ZONING
HOWARD COUNTY, MARYLAND

PREPARED BY:

CENTURY ENGINEERING, INC.
CONSULTING ENGINEERS - PLANNERS
10710 GILROY ROAD
HUNT VALLEY, MARYLAND 21031

DES: BK	JBD	1	AS BUILT REVISION	9/08
DRN: JBD				
CHK: RT				
DATE: 9/08	BY	NO.	REVISIONS	DATE

WATER & SEWER AS BUILTS

VILLAGE TOWNS
PHASE III-A, UNITS 178 THRU 245
CONTRACT NO. 44-4490-D

LIBER: 6264 ~ FOLIO: 674
ZONED: R-MH ~ TAX MAP: 43 ~ GRID: 3 ~ PARCEL: 3
1ST ELECTION DISTRICT ~ HOWARD COUNTY, MARYLAND

SCALE
NONE
SHEET
3 OF 3B