


GENERAL NOTES

- PART I**
- APPROXIMATE LOCATION OF EXISTING MAINS ARE SHOWN. THE CONTRACTOR SHALL TAKE ALL NECESSARY PRECAUTIONS TO PROTECT EXISTING MAINS AND SERVICES AND MAINTAIN UNINTERRUPTED SERVICE. ANY DAMAGE INCURRED SHALL BE REPAIRED IMMEDIATELY TO THE SATISFACTION OF THE ENGINEER AT THE CONTRACTOR'S EXPENSE.
 - THE TOPOGRAPHY SHOWN HEREON IS BASED ON AN AERIAL SURVEY BY FREDERICK WARD ASSOCIATES, INC. AND BY RECORDED DRAWINGS.
 - HORIZONTAL AND VERTICAL SURVEY CONTROLS:**
THE COORDINATES SHOWN ON THE DRAWINGS ARE BASED ON MARYLAND STATE REFERENCE SYSTEM NAD '83/'91 AS PROJECTED BY HOWARD COUNTY GEODETIC CONTROL STATIONS 1741003 AND 1741002-R.
ALL VERTICAL CONTROLS ARE BASED ON (NAVD' 27). VERTICAL CONTROLS PROVIDED ON DRAWINGS ARE:
GEODETIC SURVEY CONTROL 1741003 (N. N/A / E. N/A)
BRASS DISC SET ON TOP OF A CONCRETE MONUMENT, LOCATED AT W. SIDE OF RT-216 EAST OF ALL SAINTS ROAD; AND APPROX. 130' S. OF INTERSECTION OF ALL SAINTS ROAD, RT 216 AND OLD WHISKEY ROAD.
GEODETIC SURVEY CONTROL 1741002-R (N. N/A / E. N/A)
BRASS DISC SET ON TOP OF A CONCRETE MONUMENT, LOCATED W. SIDE OF RT. 216 60' NORTH OF THE INTERSECTION OF PILGRIM AVE, RT 216 AND BALTIMORE AVE.
 - ALL PIPE ELEVATIONS SHOWN ARE INVERT ELEVATIONS UNLESS OTHERWISE NOTED.
 - CLEAR ALL UTILITIES BY A MINIMUM OF 12 INCHES. CLEAR ALL POLES BY 5'-0" MINIMUM OR TUNNEL AS REQUIRED UNLESS OTHERWISE NOTED. THE OWNER HAS CONTACTED THE UTILITY COMPANIES AND HAS MADE ARRANGEMENTS FOR BRACING OF POLES AS SHOWN ON DRAWINGS. IN THE EVENT THE CONTRACTOR'S WORK REQUIRES THE BRACING OF ADDITIONAL POLES, ANY COST INCURRED BY THE OWNER FOR BRACING OF ADDITIONAL POLES OR DAMAGES SHALL BE DEDUCTED FROM MONIES OWED THE CONTRACTOR. THE CONTRACTOR SHALL COORDINATE WITH THE UTILITY COMPANIES TO SCHEDULE THE BRACING OF THE POLES.
 - FOR DETAILS NOT SHOWN ON THE DRAWINGS, AND FOR MATERIALS AND CONSTRUCTION METHODS USE, HOWARD COUNTY DESIGN MANUAL, VOLUME IV, STANDARD SPECIFICATIONS AND DETAILS FOR CONSTRUCTION (LATEST EDITION), THE CONTRACTOR SHALL HAVE A COPY OF VOLUME IV ON THE JOB.
 - WHERE TEST PITS HAVE BEEN MADE ON EXISTING UTILITIES, THEY ARE NOTED BY THE SYMBOL  AT THE LOCATION OF THE TEST PIT. A NOTES OR NOTES CONTAINING THE RESULTS OF THE TEST PIT OR PITS IS INCLUDED ON THE DRAWINGS. EXISTING UTILITIES IN THE VICINITY OF THE PROPOSED WORK FOR WHICH TEST PITS HAVE NOT BEEN DUG SHALL BE LOCATED BY THE CONTRACTOR TWO WEEKS IN ADVANCE OF CONSTRUCTION OPERATION AT HIS OWN EXPENSE.
 - THE CONTRACTOR SHALL NOTIFY THE FOLLOWING UTILITY COMPANIES OR AGENCIES AT LEAST FIVE WORKING DAYS BEFORE STARTING WORK SHOWN THESE PLANS:
AT &T _____ 1-800-252-1133
BGE (CONTRACTOR SERVICE) _____ 410-850-4620
BGE (EMERGENCY) _____ 410-685-1400
BUREAU OF UTILITIES _____ 410-313-4900
COLONIAL PIPELINE CO _____ 410-795-1390
MISS UTILITY _____ 1-800-257-7777
STATE HIGHWAY ADMINISTRATION _____ 410-531-5533
VERIZON _____ 1-800-743-0033/410-224-9210
 - TREES AND SHRUBS ARE TO BE PROTECTED FROM DAMAGE TO THE MAXIMUM EXTENT. TREES AND SHRUBS LOCATED WITHIN THE CONSTRUCTION STRIP ARE NOT TO BE REMOVED OR DAMAGED BY THE CONTRACTOR.
 - THE CONTRACTOR SHALL REMOVE TREES, STUMPS AND ROOTS ALONG THE LINE OF EXCAVATION. PAYMENT FOR SUCH REMOVAL SHALL BE INCLUDED IN THE UNIT PRICE BID FOR THE CONSTRUCTION OF THE MAIN.
 - THE CONTRACTOR SHALL NOTIFY THE BUREAU OF HIGHWAYS, HOWARD COUNTY, AT (410) 313-7450 AT LEAST FIVE WORKING DAYS BEFORE ANY OPEN CUTTING OR BORING/JACKING OF ANY COUNTY ROAD FOR LAYING WATER/SEWER MAINS OR HOUSE CONNECTIONS. THE APPROVAL OF THESE DRAWINGS WILL CONSTITUTE COMPLIANCE WITH DPW REQUIREMENTS PER SECTION 18.114(a) OF THE HOWARD COUNTY CODE.

PART II - WATER

- ALL WATER MAINS TO BE D.I.P. CLASS 52 UNLESS OTHERWISE NOTED.
- TOPS OF ALL WATER MAINS TO HAVE A MINIMUM OF 3'-6" COVER UNLESS OTHERWISE NOTED.
- VALVES ADJACENT TO TEES SHALL BE STRAPPED TO TEES.
- ALL FITTINGS SHALL BE BUTTRESSED OR ANCHORED WITH CONCRETE IN ACCORDANCE WITH THE STANDARD DETAILS UNLESS OTHERWISE PROVIDED FOR ON THE DRAWINGS.
- FIRE HYDRANTS SHALL BE SET TO THE BURY LINE ELEVATIONS SHOWN ON THE DRAWINGS. ALL FIRE HYDRANTS SHALL BE INSTALLED IN ACCORDANCE WITH STANDARD DETAILS. THE SOIL AROUND THE FIRE HYDRANT SHALL BE COMPACTED IN ACCORDANCE WITH SECTION 1000 AND 1005 OF THE STANDARD SPECIFICATIONS.
- THE CONTRACTOR SHALL NOT OPERATE ANY WATER MAIN VALVES ON THE EXISTING WATER SYSTEM.

PART III - SEWER

- ALL SEWER MAINS SHALL BE D.I.P. OR P.V.C UNLESS OTHERWISE NOTED.
- ALL MANHOLES SHALL BE 4'-0" INSIDE DIAMETER UNLESS OTHERWISE NOTED.
- FORCE MAINS SHALL BE D.I.P. ONLY.
- MANHOLES SHOWN WITH 12" AND 16" WALLS ARE FOR BRICK MANHOLES ONLY.
- MANHOLES DESIGNATED W.T. IN PLAN AND PROFILE SHALL HAVE WATERTIGHT FRAME AND COVER, STANDARD DETAIL 05.52. WHERE WATERTIGHT MANHOLE FRAME AND COVERS ARE USED, SET TOP OF FRAME 1'-6" ABOVE FINISHED GRADE UNLESS OTHERWISE NOTED ON THE DRAWINGS.
- HOUSE(S) WITH THE SYMBOL "C.N.S." INDICATES THAT CELLAR CANNOT BE SERVED.

THIS DEVELOPMENT IS APPROVED FOR SOIL EROSION AND SEDIMENT CONTROL BY THE HOWARD COUNTY SOIL CONSERVATION DISTRICT.

John R. Roberts 3/29/07
HOWARD COUNTY SOIL CONSERVATION DISTRICT DATE

REVIEWED FOR HOWARD COUNTY SOIL CONSERVATION DISTRICT AND MEETS TECHNICAL REQUIREMENTS.

Jim Meyer 3/29/07
U.S. SOIL CONSERVATION DISTRICT DATE

SEDIMENT CONTROL MEASURES WILL BE IMPLEMENTED IN ACCORDANCE WITH SECTION 219 OF THE SPECIFICATIONS AND WITH FINAL PLAN SDP-06-076

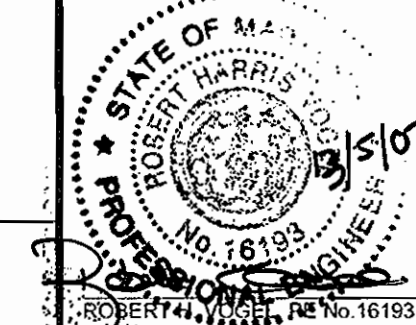
DEPARTMENT OF PUBLIC WORKS
HOWARD COUNTY, MARYLAND

DEPARTMENT OF PLANNING & ZONING
HOWARD COUNTY, MARYLAND

ROBERT H. VOGEL ENGINEERING, INC.
ENGINEERS • SURVEYORS • PLANNERS
8407 MAIN STREET TEL: 410.461.7666
ELLCOTT CITY, MD 21043 FAX: 410.461.8961

DES:	HD				
DRN:	HD				
CHK:	RHV				
DATE:	DEC 2006	BY	NO.	REVISION	DATE
			1	AS-BUILT DATA SHOWN	5/21/07

FINAL PLAN
1" WATER
8" SEWER
600' SCALE MAP NO. 37
BLOCK NO. 3



NORTH LAUREL PARK
LOTS 20A, 21A & 22-27
SINGLE FAMILY DETACHED
CONTRACT 20-4462-D

TAX MAP 50 GRID 3
6TH ELECTION DISTRICT
REF.: SDP-06-076

PARCEL 426
HOWARD COUNTY, MARYLAND

SCALE AS SHOWN
SHEET 1 OF 2

FINAL PUBLIC WATER & SEWER PLAN

NORTH LAUREL PARK

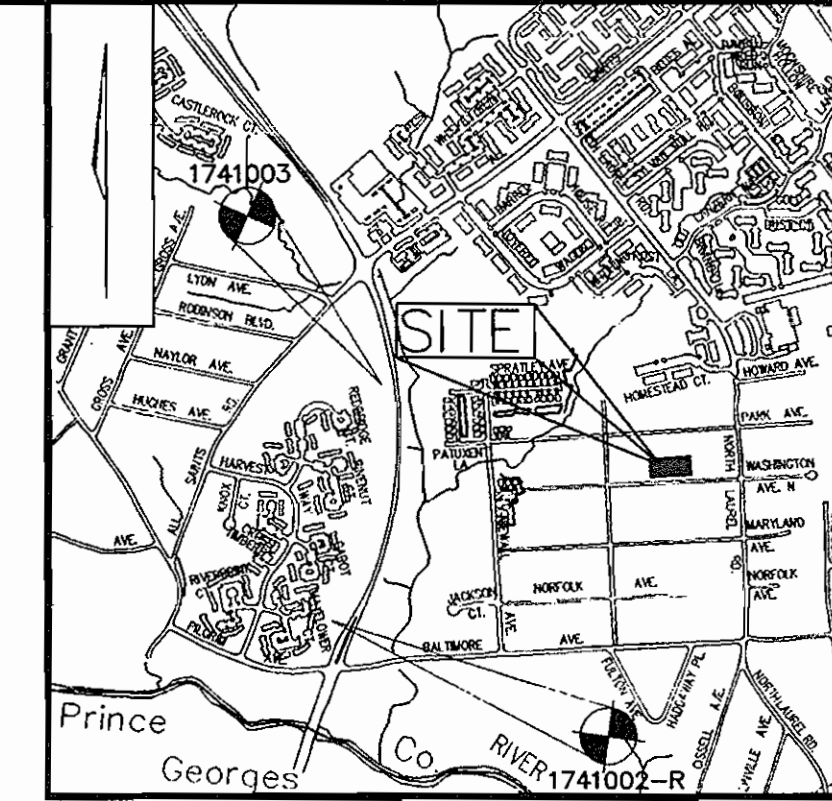
LOTS 20A, 21A, 22-27

SINGLE FAMILY DETACHED

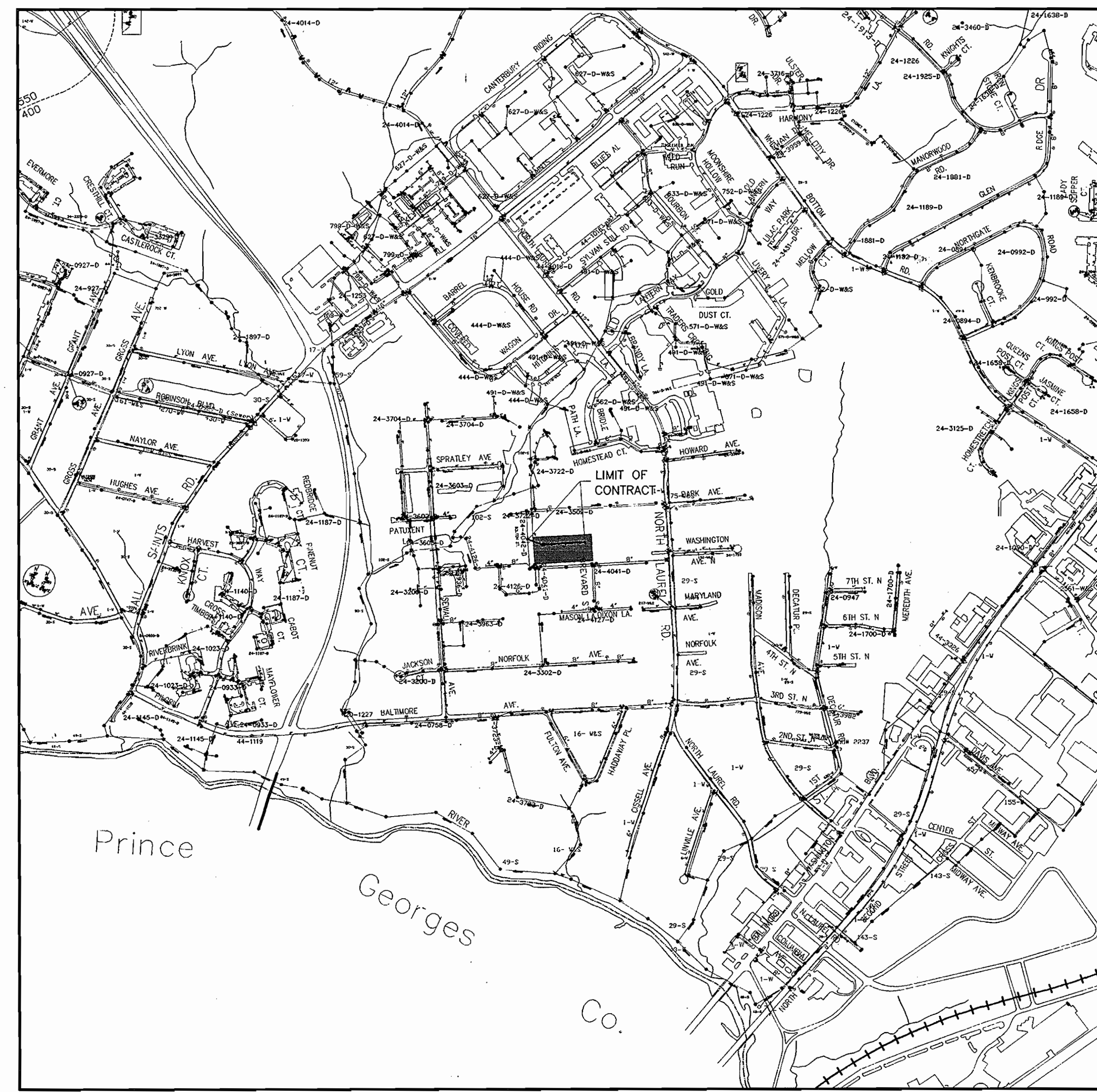
CONTRACT 20-4462-D

BENCHMARKS

HOWARD COUNTY CONTROL TRAVERSE NO. 1741003	N 487020.503	E 842118.765	ELEV. 197.368
HOWARD COUNTY CONTROL TRAVERSE NO. 1741002-R	N N/A	E N/A	ELEV. 198.395



VICINITY MAP
SCALE: 1"=2000'



LOCATION MAP
SCALE: 1"=600'

WATER CODE:	C-05
SEWER CODE:	7141500
TEST GRADIENT:	550

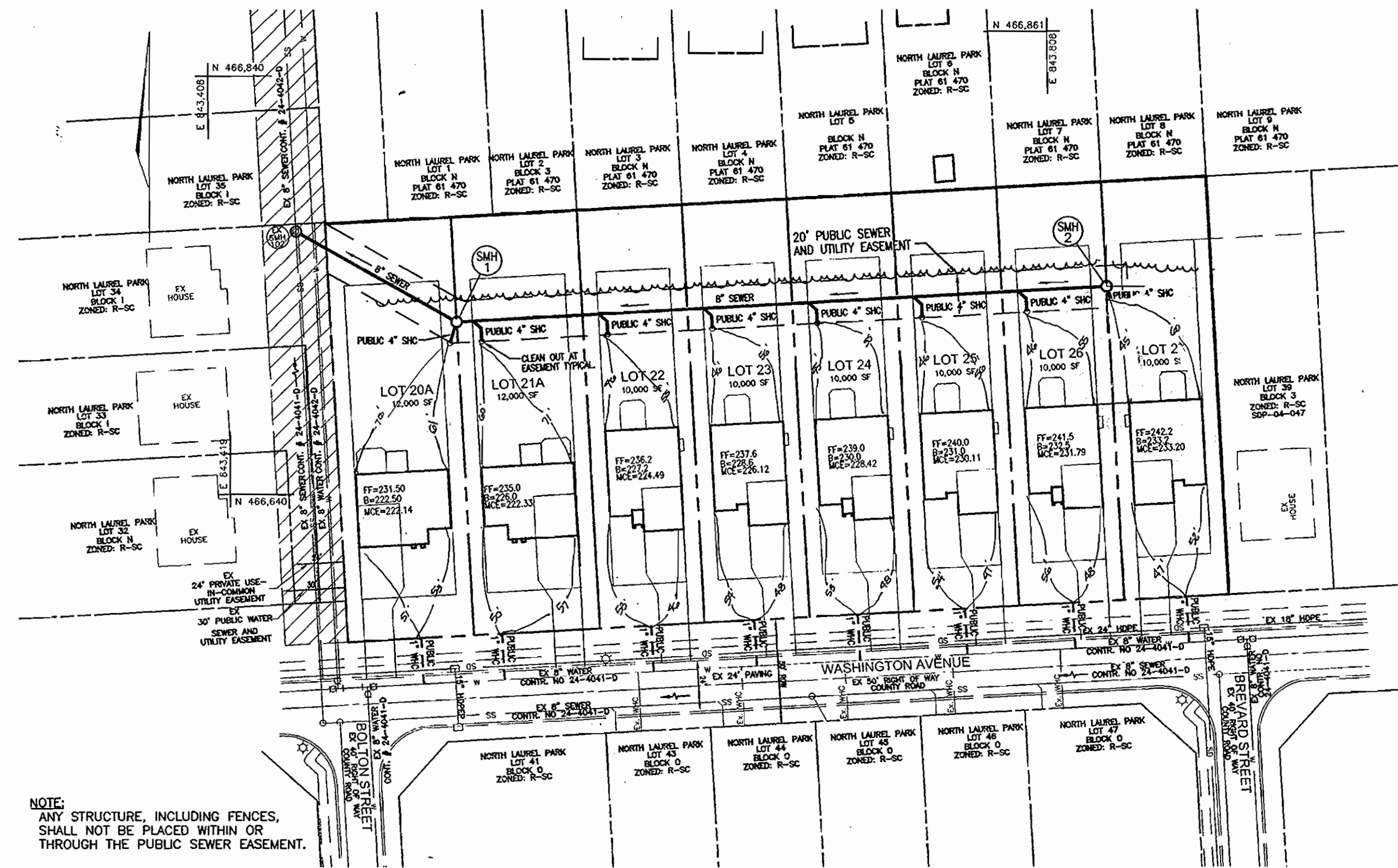
QUANTITIES

NAME OF UTILITY CONTRACTOR : CONSOLIDATED CONSTRUCTION INC.
SURVEY AND DRAFTING DIVISION AS-BUILT DATE :

ITEMS	QUANTITIES ESTIMATED	AS-BUILT 0107		
		QUANTITIES	TYPE	MANUFACTURER/SUPPLIER
WATER				
MANHOLE	2 EA.	2EA		ATLANTIC CONCRETE INC.
1" WHC	160 L.F.	160 L.F.	K	READING / B.R.S.
SEWER				
8" SEWER	396 LF	396 LF	SDR 35	J.M. Hfg / B.R.S.
4" SHC	80 L.F.	80 L.F.	SDR 35	J.M. Hfg / B.R.S.

TYPE OF BUILDING:	SINGLE FAMILY HOUSE
NO. OF UNITS:	8
NO. OF WATER HOUSE CONNECTIONS:	8
NO. OF SEWER HOUSE CONNECTIONS:	8
SEWER SHED:	LITTLE PATUXENT
TREATMENT PLANT:	LITTLE PATUXENT TREATMENT PLANT

DEVELOPER
TRINITY HOMES
MICHAEL L.PFAU
3675 PARK AVENUE
SUITE 301
ELLCOTT CITY, MARYLAND
21043-4511
410-480-0023

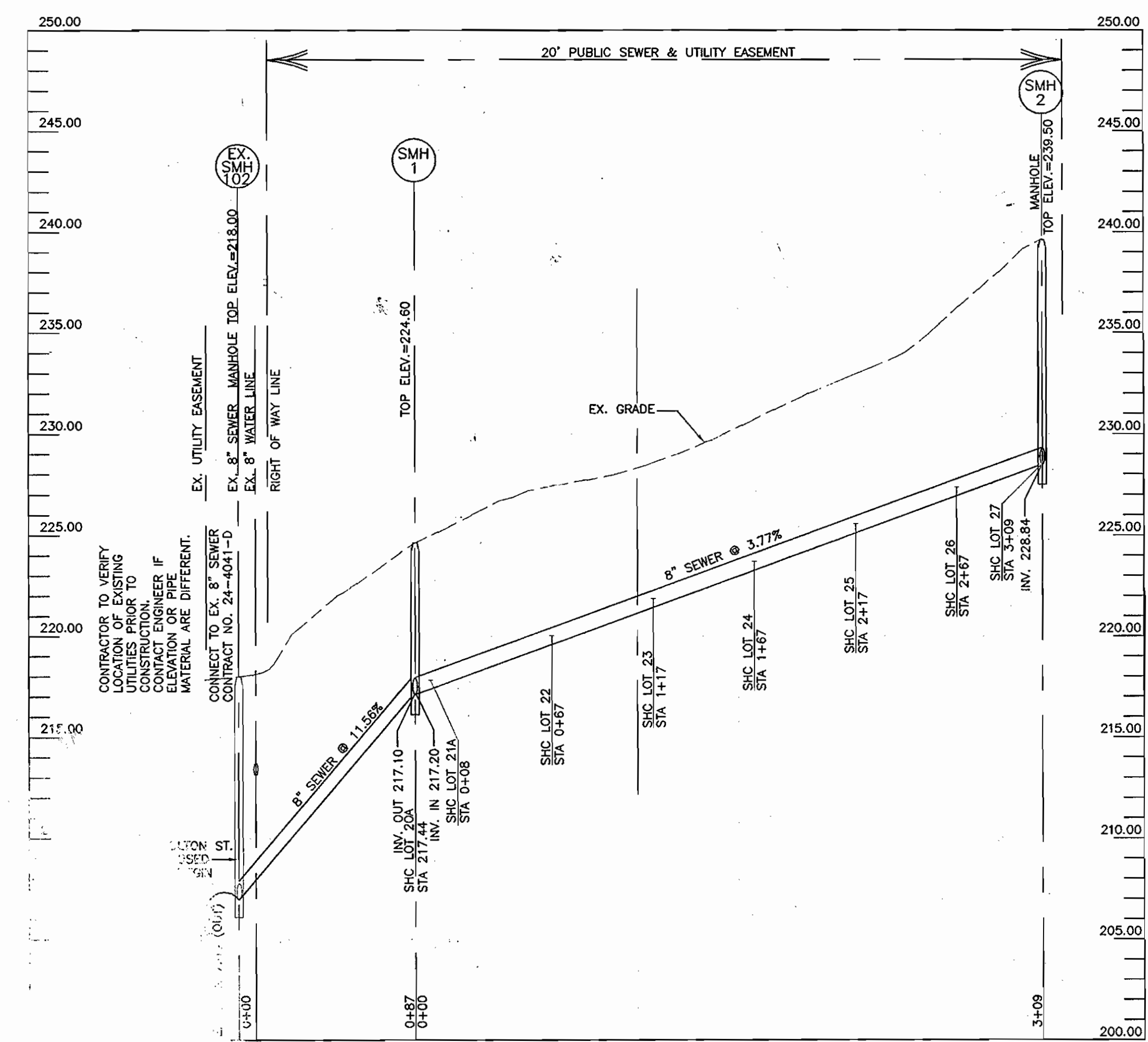


SEWER MANHOLE SCHEDULE						
NO.	TYPE	LOCATION		TOP ELEV.	INV. IN	INV. OUT
		NORTHING	EASTING			
SMH 1	STD. PRECAST MH HO. CO. STD. DET. G5.12	466722.38	843526.77	224.60	217.20	217.10
SMH 2	STD. PRECAST MH HO. CO. STD. DET. G5.12	466739.05	843836.32	239.50	-	228.50

SEWER CONNECTION TABULATION					
LOT NO	TYPE	ELEV. @ MAIN	ELEV. @ W/ AT EASEMENT	M.C.E.	
20A	4" SHC, 10 LF @2%	217.44	217.64	222.14	
21A	4" SHC, 10 LF @2%	217.83	218.03	222.33	
22	4" SHC, 10 LF @2%	219.99	220.19	224.49	
23	4" SHC, 10 LF @2%	221.82	221.02	226.12	
24	4" SHC, 10 LF @2%	223.65	223.85	228.42	
25	4" SHC, 10 LF @2%	225.48	225.68	230.11	
26	4" SHC, 10 LF @2%	227.31	227.51	231.79	
27	4" SHC, 10 LF @2%	228.84	229.04	233.20	

NOTE:
ANY STRUCTURE, INCLUDING FENCES,
SHALL NOT BE PLACED WITHIN OR
THROUGH THE PUBLIC SEWER EASEMENT.

PLAN
SCALE 1"=50'



PROFILE
SCALE 1"=5' VERTICAL
1"=50' HORIZONTAL

DEVELOPER
TRINITY
MICHAEL L.PFAU
3675 PARK AVENUE
SUITE 301
ELLCOTT CITY, MARYLAND
21043-4511
410-480-0023

DEPARTMENT OF PUBLIC WORKS
HOWARD COUNTY, MARYLAND

Robert H. Vogel 3-21-07
CHIEF, BUREAU OF UTILITIES DATE

DEPARTMENT OF PLANNING & ZONING
HOWARD COUNTY, MARYLAND

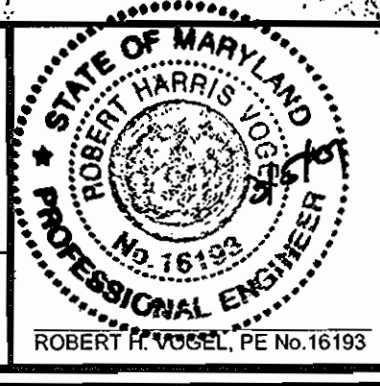
Michael L. Pfau 4/26/07
CHIEF, DEVELOPMENT ENGINEERING DIVISION DATE

ROBERT H. VOGEL
ENGINEERS • SURVEYORS • PLANNERS
8407 MAIN STREET
ELLCOTT CITY, MD 21043 TEL: 410-481-7866
FAX: 410-481-8961

DES:	MY/HD				
DRN:	MY/HD				
CHK:	RHV				
DATE:	DEC 2006	BY:	NO.	REVISION	DATE
					09/21/07

FINAL PLAN
1" WATER
8" SEWER

600' SCALE MAP NO. 37
BLOCK NO. 3



NORTH LAUREL PARK
LOTS 20A, 21A & 22-27
SINGLE FAMILY DETACHED
CONTRACT 20-4462-D

TAX MAP 50 GRID 3
6TH ELECTION DISTRICT
REF.: SDP-06-076

PARCEL 426
HOWARD COUNTY, MARYLAND

SCALE AS SHOWN

SHEET 2 OF 2