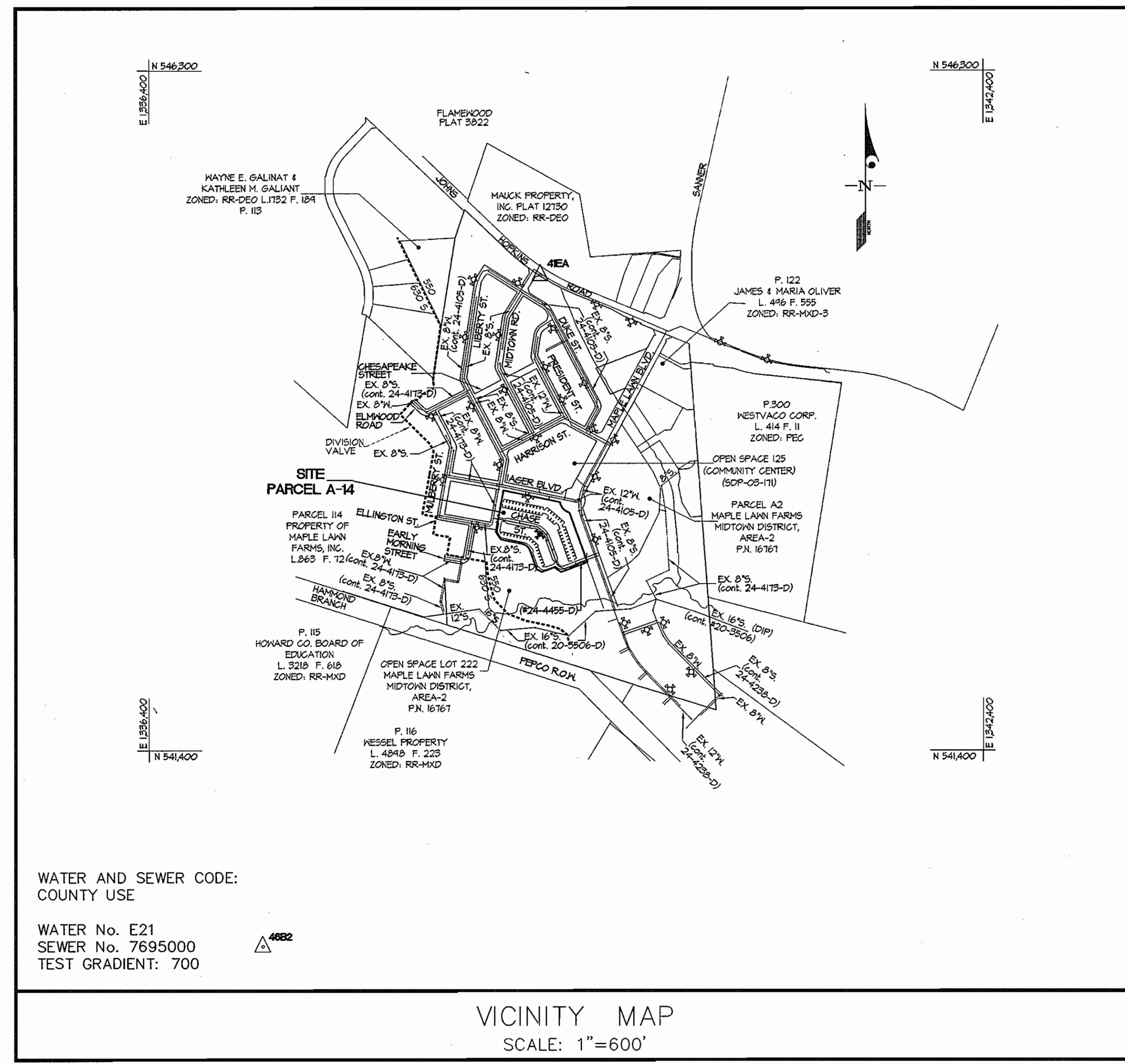
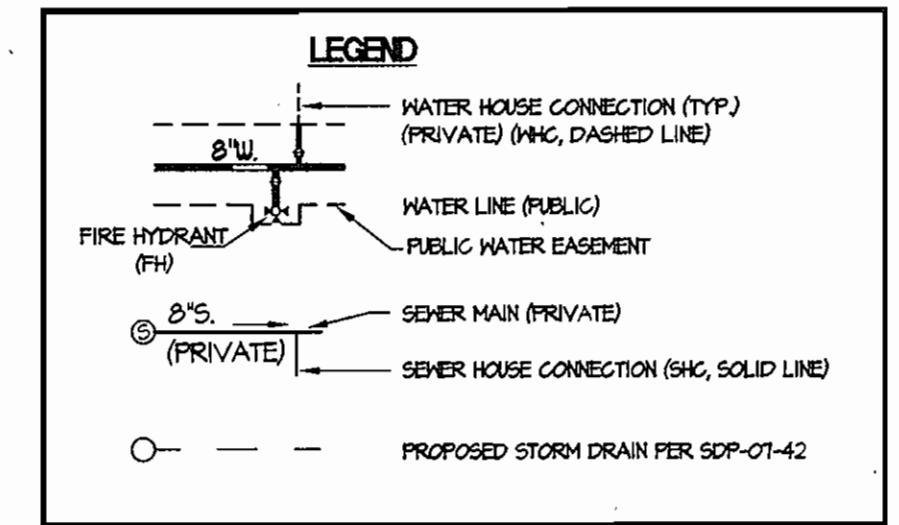


QUANTITIES				
ITEMS	QUANTITIES ESTIMATED	AS-BUILT		
		QUANTITIES	TYPE	MANUFACTURER/SUPPLIER
4" WATER	10 L.F.	10 L.F.	DIF/CLASS 54	U.S. PIPE/HD SUPPLY
6" WATER	65 L.F.	65 L.F.	"	"
8" WATER MAIN	914 L.F.	812 L.F.	"	"
8"x4" TEE	1 EA.	1EA	MJ DUCTILE	SIGMA/ " "
8"x6" TEE	5 EA.	5EA	"	"
8"x8" T.S.&V.	1 EA.	1EA	"	"
12"x8" T.S.&V.	2 EA.	2EA	"	"
8" 1/8 H.B.	1 EA.	1EA	MJ DUCTILE	SIGMA/ " "
8" 1/8 H.B.	4 EA.	4EA	"	"
8" VALVE	1 EA.	1EA	GATE	KENNEDY/ " "
8"x6" FHT & VALVE	1 EA.	1EA	MJ & GATE	SIGMA & KENNEDY/ HD SUPPLY
FIRE HYDRANT	1 EA.	1EA	K 01	KENNEDY GUARDIAN
SEWER MANHOLE	1 EA.	1EA	STD. PRECAST	CONTRACTOR'S PRECAST

NAME OF UTILITY CONTRACTOR: Bosley Construction, Inc.

SURVEY AND DRAFTING DIV. CHECKBOX: AS-BUILT DATE:



TYPE OF BUILDING	APARTMENT/CONDOMINIUM
NUMBER OF UNITS	144
NUMBER OF S.H.C.'s	72 (PRIVATE PER SOP-07-42)
NUMBER OF W.H.C.'s	0
AREA OF COMMERCIAL LOT/PARCEL	5,552
SEWER SHED	LITTLE PATUXENT
PUMPING STATION	N/A

SHEET INDEX	
1.	COVER SHEET
2.	WATER AND SEWER EXTENSION PLAN & PROFILES

CONTRACT No. 24-4455-D
MAPLE LAWN FARMS
MIDTOWN DISTRICT - AREA 2, PARCEL A-14
HOWARD COUNTY, MARYLAND
DEPARTMENT OF PUBLIC WORKS

Sediment Control Measures will be implemented in accordance with Section 219 of the Specifications & with Site Development Plan SDP-07-42; Drawings for Sediment & Erosion Control.

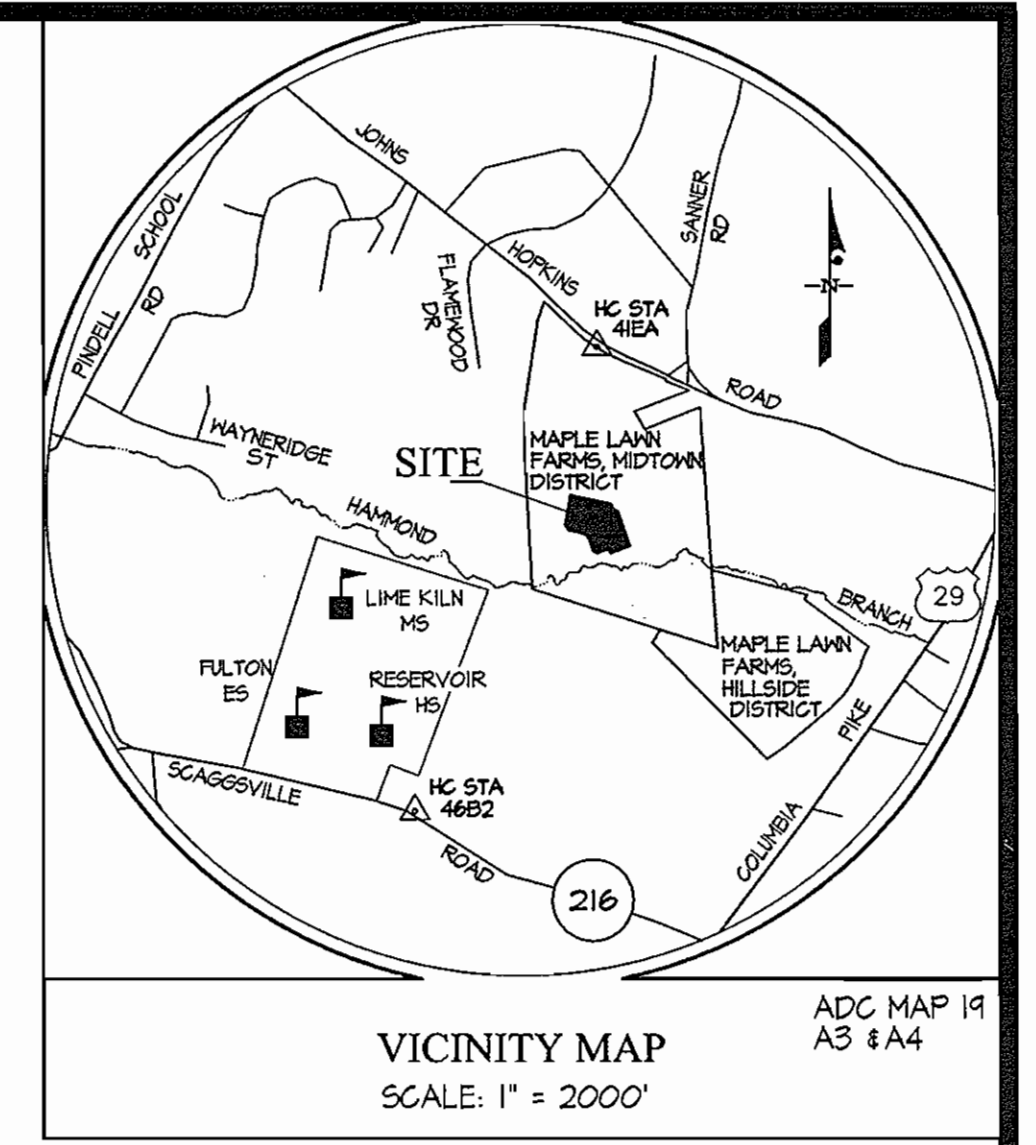
REVIEWED FOR HOWARD SOIL CONSERVATION DISTRICT AND MEETS TECHNICAL REQUIREMENT.

Jim Mays 6-1-07
SIGNATURE DATE
U.S.D.A. NATURAL RESOURCES CONSERVATION SERVICE

THIS DEVELOPMENT PLAN IS APPROVED FOR SOIL EROSION AND SEDIMENT CONTROL BY THE HOWARD SOIL CONSERVATION DISTRICT.

APPROVED: *John K. Roberts* 6-1-07
HOWARD S.C.D. DATE

HOWARD COUNTY CONTROL
NAD83 HORIZONTAL DATA & NVD83 VERTICAL DATA
41EA N 544825.809
E 133421.444
ELV.=407.055
46B2 N 539481.1271
E 1331218.484
ELV.=474.671

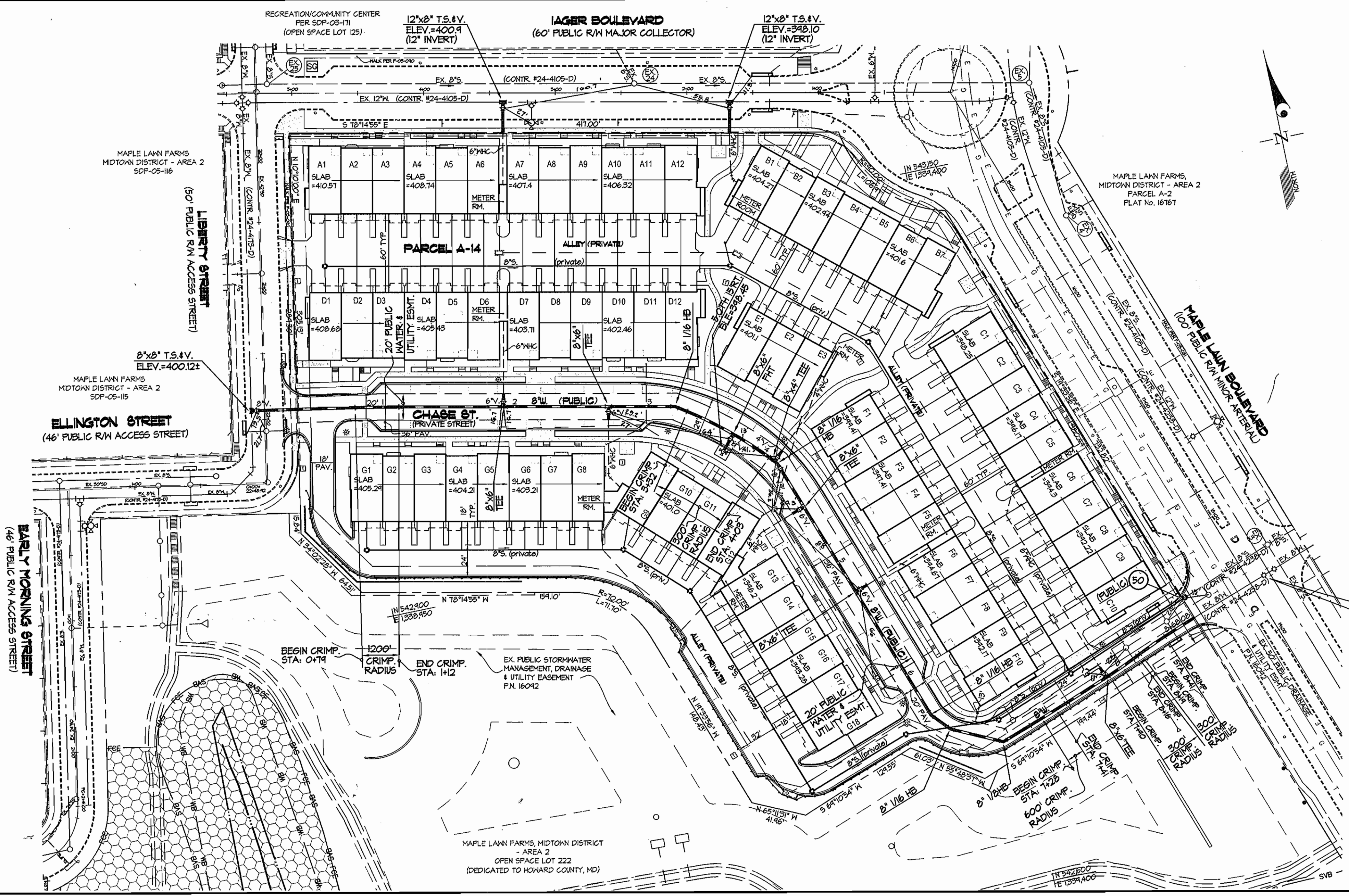


- GENERAL NOTES**
- PART I**
- APPROXIMATE LOCATIONS OF EXISTING MAINS ARE SHOWN. THE CONTRACTOR SHALL TAKE ALL NECESSARY PRECAUTIONS TO PROTECT EXISTING MAINS AND SERVICES AND MAINTAIN UNINTERRUPTED SERVICE. ANY DAMAGE INCURRED SHALL BE REPAIRED IMMEDIATELY TO THE SATISFACTION OF THE ENGINEER AT THE CONTRACTOR'S EXPENSE.
 - TOPOGRAPHIC FIELD SURVEYS WERE PERFORMED ON MARCH, 2006 BY GUTSCHICK, LITTLE & WEBER, P.A.
 - HORIZONTAL AND VERTICAL SURVEY CONTROLS:
 - THE COORDINATES SHOWN ON THE DRAWINGS ARE BASED ON MARYLAND STATE REFERENCE SYSTEM NAD 83/91 AS PROJECTED BY HOWARD COUNTY GEODETIC CONTROL STATIONS NO. 41EA AND NO. 46B2.
 - ALL VERTICAL CONTROLS ARE BASED ON NAVD 83. VERTICAL CONTROLS PROVIDED ON DRAWINGS ARE STANDARD DISC ON CONCRETE MONUMENT.
 - ALL PIPE ELEVATIONS SHOWN ARE INVERT ELEVATIONS UNLESS OTHERWISE NOTED ON THE PLANS.
 - CLEAR ALL UTILITIES BY A MINIMUM OF 12 INCHES. CLEAR ALL POLES BY 5'-0" MINIMUM OR TUNNEL AS REQUIRED UNLESS OTHERWISE NOTED. THE OWNER HAS CONTACTED THE UTILITY COMPANIES AND HAS MADE ARRANGEMENTS FOR BRACING OF POLES AS SHOWN ON THE DRAWINGS. IN THE EVENT THE CONTRACTOR'S WORK REQUIRES BRACING OF ADDITIONAL POLES, ANY COST INCURRED BY THE OWNER FOR THE BRACING OF ADDITIONAL POLES OR DAMAGES SHALL BE DEDUCTED FROM MONIES OWED THE CONTRACTOR. THE CONTRACTOR SHALL COORDINATE WITH THE UTILITY COMPANIES TO SCHEDULE THE BRACING OF THE POLES.
 - FOR DETAILS NOT SHOWN ON THE DRAWINGS, AND FOR MATERIALS AND CONSTRUCTION METHODS, USE HOWARD COUNTY DESIGN MANUAL, VOLUME IV, STANDARD SPECIFICATIONS AND DETAILS FOR CONSTRUCTION (LATEST EDITION). THE CONTRACTOR SHALL HAVE A COPY OF VOLUME IV ON THE JOB.
 - WHERE TEST PITS HAVE BEEN MADE ON EXISTING UTILITIES, THEY ARE NOTED BY THE SYMBOL @ AT THE LOCATIONS OF THE TEST PITS. A NOTE OR NOTES CONTAINING THE RESULTS OF THE TEST PIT OR PITS IS INCLUDED ON THE DRAWINGS. EXISTING UTILITIES IN THE VICINITY OF THE PROPOSED WORK FOR WHICH TEST PITS HAVE NOT BEEN DUG SHALL BE LOCATED BY THE CONTRACTOR TWO WEEKS IN ADVANCE OF CONSTRUCTION OPERATIONS AT HIS OWN EXPENSE.
 - THE CONTRACTOR SHALL NOTIFY THE FOLLOWING UTILITY COMPANIES OR AGENCIES AT LEAST FIVE WORKING DAYS BEFORE STARTING WORK ON THESE PLANS.

AT&T	1-800-252-1133
BGE (CONTRACTOR SERVICES)	410-850-4620
BGE (UNDER GROUND DAMAGE CONTROL)	410-685-1400
BUREAU OF UTILITIES	410-315-4900
COLONIAL PIPELINE CO.	410-785-1540
MISS UTILITY	1-800-251-7777
STATE HIGHWAY ADMINISTRATION	410-531-5533
VERIZON	1-800-743-0033 / 410-224-4210
- PART II - WATER**
- ALL MAINS SHALL BE D.I.P. CLASS 52 UNLESS OTHERWISE NOTED.
 - TOPS OF ALL WATER MAINS SHALL HAVE A MINIMUM OF 3'-6" OF COVER UNLESS OTHERWISE NOTED.
 - VALVES ADJACENT TO TEES SHALL BE STRAPPED TO TEES.
 - ALL FITTINGS SHALL BE BUTTRESSED OR ANCHORED WITH CONCRETE IN ACCORDANCE WITH STANDARD DETAILS UNLESS OTHERWISE PROVIDED FOR ON THE DRAWINGS.
 - FIRE HYDRANTS SHALL BE SET TO THE BURY LINE ELEVATIONS SHOWN ON THE DRAWINGS. ALL FIRE HYDRANTS SHALL BE INSTALLED IN ACCORDANCE WITH STANDARD DETAILS. THE SOIL AROUND THE FIRE HYDRANT SHALL BE COMPACTED IN ACCORDANCE WITH SECTION 1000 AND SECTION 1005 OF THE STANDARD SPECIFICATIONS.
 - THE CONTRACTOR SHALL NOT OPERATE ANY WATER MAIN VALVES ON THE EXISTING WATER SYSTEM.
 - ALL WATER HOUSE CONNECTIONS SHALL BE FOR INSIDE METER SETTING UNLESS OTHERWISE NOTED ON PLANS OR IN SPECIFICATIONS.
 - FOR SPRINKLER SYSTEM FOR ALL TOWN HOMES OR MULTI-FAMILY DWELLING UNITS SHOULD HAVE A MINIMUM OF 1' CONNECTION WITH A 3/4" METER.
- PART III - SEWER**
- ALL SEWER MAINS SHALL BE D.I.P. OR P.V.C. UNLESS OTHERWISE NOTED.
 - ALL MANHOLES SHALL BE 4'-0" INSIDE DIAMETER UNLESS OTHERWISE NOTED.
 - FORCE MAINS SHALL BE D.I.P. ONLY.
 - MANHOLES SHOWN WITH THE 12" AND 16" WALLS ARE FOR BRICK MANHOLES ONLY.
 - MANHOLES DESIGNATED W.T. IN PLAN AND PROFILE SHALL HAVE WATERTIGHT FRAME AND COVER, STANDARD DETAIL 6552. WHERE WATERTIGHT MANHOLE FRAMES AND COVERS ARE USED, SET TOP OF FRAME 1'-6" ABOVE FINISHED GRADE UNLESS OTHERWISE NOTED ON THE DRAWINGS.
 - HOUSE(S) WITH THE SYMBOL "C.N.S." INDICATES THE CELLAR CANNOT BE SERVED.

WATER AND SEWER AS-BUILTS

DEPARTMENT OF PUBLIC WORKS HOWARD COUNTY, MARYLAND <i>Retha</i> 5-30-07 CHIEF, BUREAU OF UTILITIES DATE	DEPARTMENT OF PLANNING AND ZONING HOWARD COUNTY, MARYLAND <i>John K. Roberts</i> 6/1/07 CHIEF, DEVELOPMENT ENGINEERING DIVISION DATE	GLW GUTSCHICK LITTLE & WEBER, P.A. CIVIL ENGINEERS, LAND SURVEYORS, LAND PLANNERS, LANDSCAPE ARCHITECTS 3909 NATIONAL DRIVE - SUITE 250 - BURTONSVILLE OFFICE PARK BURTONSVILLE, MARYLAND 20866 TEL: 301-421-4024 BAL: 410-880-1920 DC/VA: 301-589-2524 FAX: 301-421-4186	PROPERTY OWNER: G & R MAPLE LAWN, INC., ET. AL. 1829 REDSTARTOWN ROAD, SUITE 300 BALTIMORE, MD 21208 410-464-8400 BUILDER/CONTRACT PURCHASER: BK MAPLE LAWN, LLC c/o BOZZUTO HOMES, INC. 7850 WALKER DRIVE, SUITE 400 GREENBELT, MD 20770 301-270-0100	DES: MBT DRN: KLP CHK: mbt DATE: MAY 2007	COVER SHEET SCALE: AS SHOWN KCI 1 BY NO AS-BUILT DATA SHOWN REVISION DATE: 12-18-07	600' SCALE MAP NO. 46 BLOCK NO. 4	MAPLE LAWN FARMS MIDTOWN DISTRICT - AREA 2, PARCEL A-14 HOWARD COUNTY, MARYLAND ELECTION DISTRICT No. 6 CONTRACT No. 24-4455-D	SCALE AS SHOWN SHEET 1 OF 2
--	---	--	--	--	---	--------------------------------------	---	--------------------------------



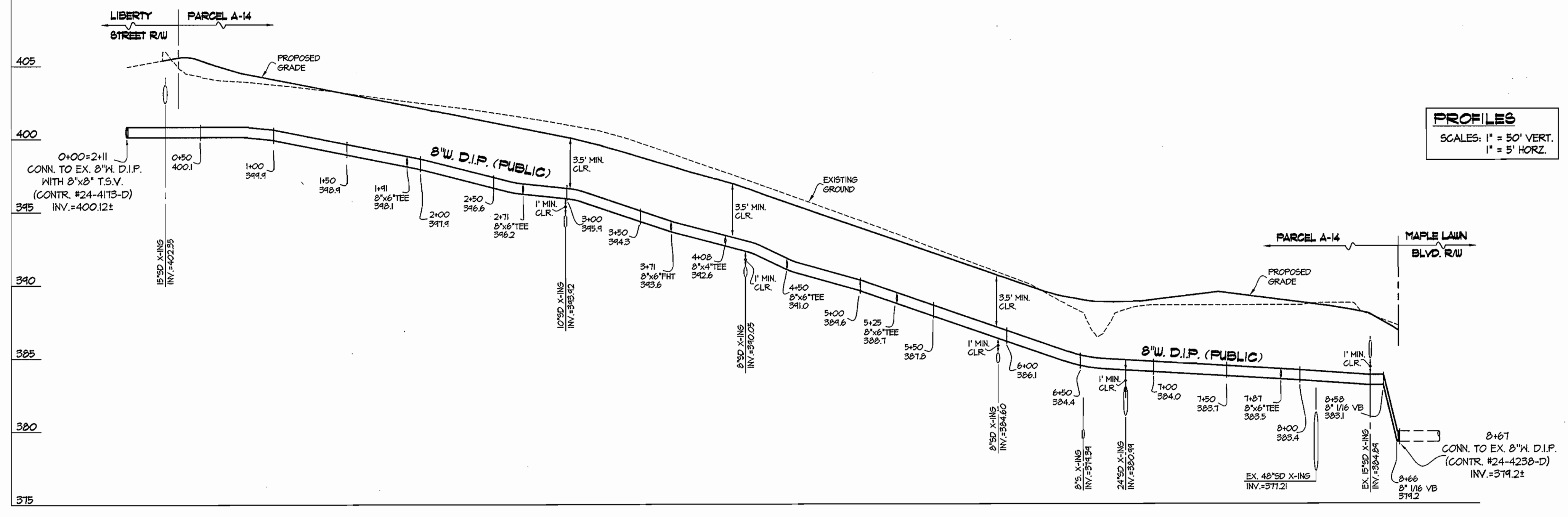
FITTING INFORMATION		
LOCATION	FITTING	NAD '83 COORDINATES
KM STA. 0+00	8"x8" T.S.I.V.	N 543075.05 E 1338016.46
KM STA. 1+11	8"x6" TEE	N 543028.64 E 1334064.44
KM STA. 2+71	8"x6" TEE	N 543022.59 E 1334142.60
KM STA. 3+22	8" 1/16" HB	N 543012.15 E 1334141.81
KM STA. 3+71	8"x6" FHT	N 54282.45 E 1334230.41
KM STA. 4+08	8"x4" TEE	N 54285.10 E 1334251.51
KM STA. 4+11	8" 1/16" HB	N 54284.16 E 1334258.84
KM STA. 4+50	8"x6" TEE	N 54286.60 E 1334212.24
KM STA. 5+25	8"x6" TEE	N 54284.64 E 1334241.46
KM STA. 6+35	8" 1/16" HB	N 542142.50 E 1334334.12
KM STA. 6+54	8" 1/16" HB	N 542128.81 E 1334346.40
KM STA. 6+95	8" 1/16" HB	N 542110.98 E 1334383.95
KM STA. 7+87	8"x6" TEE	N 542142.64 E 1334470.51

NOTES:

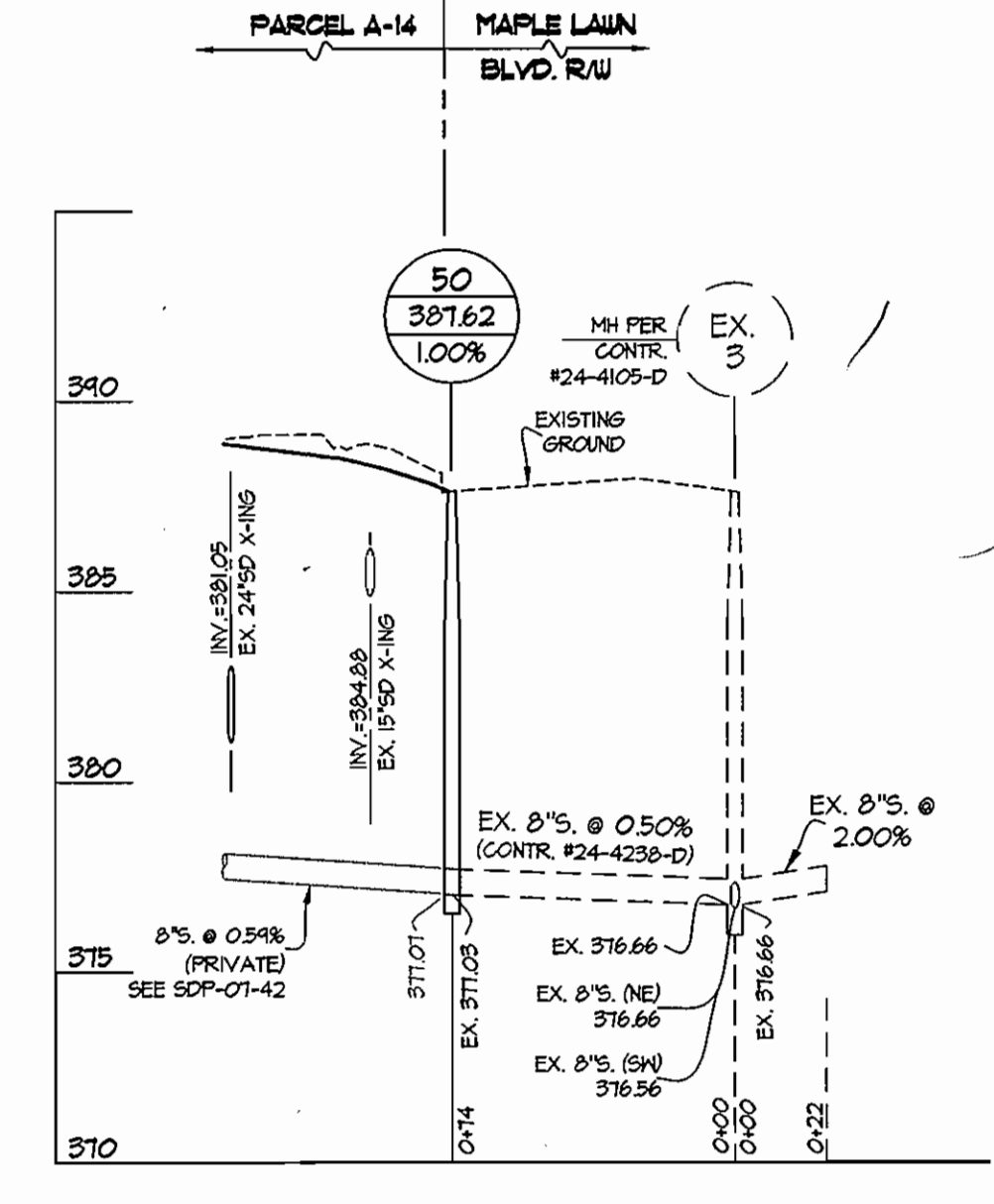
1. WATER METERS ARE LOCATED INSIDE THE BUILDINGS.
2. ALL BUILDINGS SHALL HAVE A SPRINKLER SYSTEM.
3. SEE ASSOCIATED SOP DRAWINGS FOR INFORMATION ON PRIVATE UTILITIES (ON-SITE STORM, SEWER AND 11KV).
4. WATER HOUSE CONNECTION AT STA. 2+71 SERVES G1 - G4 AND WATER HOUSE CONNECTION AT STA. 4+50 SERVES G10 - G18.

REQUEST DPM CLOSES THIS VALVE PRIOR TO CONSTRUCTION OF 24-4455-D WATER MAIN EXTENSION

PLAN VIEW
SCALE: 1" = 50'



PROFILES
SCALE: 1" = 50' VERT.
1" = 5' HORIZ.



DEPARTMENT OF PUBLIC WORKS
HOWARD COUNTY, MARYLAND
Ruth Berman 5-30-07
CHIEF, BUREAU OF UTILITIES DATE

DEPARTMENT OF PLANNING AND ZONING
HOWARD COUNTY, MARYLAND
William Danner 6/4/07
CHIEF, DEVELOPMENT ENGINEERING DIVISION DATE

GLWGUTSCHICK LITTLE & WEBER, P.A.
CIVIL ENGINEERS, LAND SURVEYORS, LAND PLANNERS, LANDSCAPE ARCHITECTS
3909 NATIONAL DRIVE - SUITE 250 - BURTONTVILLE OFFICE PARK
BURTONTVILLE, MARYLAND 20886
TEL: 301-421-4024 BAL: 410-880-1820 DC/VA: 301-389-2524 FAX: 301-421-4188



DES: MBT					
DRN: KLP					
CHK: mbt/clg					
DATE: MAY 2007	K.C.I. 1	A.S. - BUILT DATA SHOWN	12-18-07		
BY: NO		REVISION	DATE		

WATER and SEWER EXTENSION
PLAN & PROFILES
600' SCALE MAP NO. 46 BLOCK NO. 4

MAPLE LAWN FARMS
MISTOWN DISTRICT - AREA 2, PARCEL A-14
HOWARD COUNTY, MARYLAND
ELECTION DISTRICT No. 6
CONTRACT No. 24-4455-D

SCALE AS SHOWN
SHEET 2 OF 2