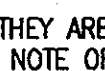


**GENERAL NOTES**

**PART I**

- APPROXIMATE LOCATION OF EXISTING MAINS ARE SHOWN. THE CONTRACTOR SHALL TAKE ALL NECESSARY PRECAUTIONS TO PROTECT EXISTING MAINS AND SERVICES AND MAINTAIN UNINTERRUPTED SERVICE. ANY DAMAGE INCURRED SHALL BE REPAIRED IMMEDIATELY TO THE SATISFACTION OF THE ENGINEER AT THE CONTRACTOR'S EXPENSE.
- BOUNDARY AND TOPOGRAPHY IS BASED ON FIELD SURVEY BY CLARK, FINEBROCK, & SACKETT, AUGUST 2002.
- HORIZONTAL AND VERTICAL SURVEY CONTROLS:  
THE COORDINATES SHOWN ON THE DRAWINGS ARE BASED ON MARYLAND STATE REFERENCE SYSTEM NAD 83/91 AS PROJECTED BY HOWARD COUNTY GEODETIC CONTROL STATIONS 0080 AND 421A.  
ALL VERTICAL CONTROLS ARE BASED ON (NAVD' 88). VERTICAL CONTROLS PROVIDED ON DRAWINGS ARE:  
GEODETIC SURVEY CONTROL 0080 (N 542366.913, E 1,363075.951)  
BRASS DISC SET ON TOP OF A CONCRETE MONUMENT, LOCATED AT INTERSECTION OF GUILFORD RD. & MISSION RD., NORTH SIDE OF POND & SIDEWALK AND 42.2' SOUTHWEST OF DRAIN INLET.  
GEODETIC SURVEY CONTROL 421A (N 543390.409 E 1364912.625)  
BRASS DISC SET ON TOP OF A CONCRETE MONUMENT, LOCATED AT 8751 MISSION RD. 0.4 MILES NORTH OF GUILFORD RD., WITHIN 41.8' CEDAR TREE AND 74.3' BG&E 297906.
- ALL PIPE ELEVATIONS SHOWN ARE INVERT ELEVATIONS UNLESS OTHERWISE NOTED ON THE PLANS.
- CLEAR ALL UTILITIES BY A MINIMUM OF 12 INCHES. CLEAR ALL POLES BY 5'-0" MINIMUM OR TUNNEL AS REQUIRED UNLESS OTHERWISE NOTED. THE OWNER HAS CONTACTED THE UTILITY COMPANIES AND HAS MADE ARRANGEMENTS FOR BRACING OF POLES AS SHOWN ON DRAWINGS. IN THE EVENT THE CONTRACTOR'S WORK REQUIRES THE BRACING OF ADDITIONAL POLES, ANY COST INCURRED BY THE OWNER FOR BRACING OF ADDITIONAL POLES OR DAMAGES SHALL BE DEDUCTED FROM MONIES OWED THE CONTRACTOR. THE CONTRACTOR SHALL COORDINATE WITH THE UTILITY COMPANIES TO SCHEDULE THE BRACING OF THE POLES.
- FOR DETAILS NOT SHOWN ON THE DRAWINGS, AND FOR MATERIALS AND CONSTRUCTION METHODS, USE HOWARD COUNTY DESIGN MANUAL, VOLUME IV, STANDARD SPECIFICATIONS AND DETAILS FOR CONSTRUCTION (LATEST EDITION). THE CONTRACTOR SHALL HAVE A COPY OF VOLUME IV ON THE JOB.
- WHERE TEST PITS HAVE BEEN MADE ON EXISTING UTILITIES, THEY ARE NOTED BY THE SYMBOL  AT THE LOCATION OF THE TEST PITS. A NOTE OR NOTES CONTAINING THE RESULTS OF THE TEST PIT OR PITS IS INCLUDED ON THE DRAWINGS. EXISTING UTILITIES IN THE VICINITY OF THE PROPOSED WORK FOR WHICH TEST PITS HAVE NOT BEEN DUG SHALL BE LOCATED BY THE CONTRACTOR TWO WEEKS IN ADVANCE OF CONSTRUCTION OPERATION AT HIS OWN EXPENSE.
- THE CONTRACTOR SHALL NOTIFY THE FOLLOWING UTILITY COMPANIES OR AGENCIES AT LEAST FIVE WORKING DAYS BEFORE STARTING WORK SHOWN THESE PLANS:  
AT & T \_\_\_\_\_ 1-800-252-1133  
BGE (CONTRACTOR SERVICE) \_\_\_\_\_ 410-850-4620  
BGE (UNDERGROUND DAMAGE CONTROL) \_\_\_\_\_ 410-685-1400  
BUREAU OF UTILITIES \_\_\_\_\_ 410-313-4900  
COLONIAL PIPELINE CO \_\_\_\_\_ 410-795-1390  
MISS UTILITY \_\_\_\_\_ 1-800-257-7777  
STATE HIGHWAY ADMINISTRATION \_\_\_\_\_ 410-531-5533  
VERIZON \_\_\_\_\_ 1-800-743-0033/410-224-9210
- TREES AND SHRUBS ARE TO BE PROTECTED FROM DAMAGE TO THE MAXIMUM EXTENT. TREES AND SHRUBS LOCATED WITHIN THE CONSTRUCTION STRIP ARE NOT TO BE REMOVED OR DAMAGED BY THE CONTRACTOR.
- THE CONTRACTOR SHALL REMOVE TREES, STUMPS AND ROOTS ALONG THE LINE OF EXCAVATION. PAYMENT FOR SUCH REMOVAL SHALL BE INCLUDED IN THE UNIT PRICE BID FOR THE CONSTRUCTION OF THE MAIN.
- THE CONTRACTOR SHALL NOTIFY THE BUREAU OF HIGHWAYS, HOWARD COUNTY, AT (410) 313-7450 AT LEAST FIVE WORKING DAYS BEFORE OPEN CUTTING OR BORING/JACKING OF ANY COUNTY ROAD FOR LAYING WATER/SEWER MAINS OR HOUSE CONNECTIONS. THE APPROVAL OF THESE DRAWINGS WILL CONSTITUTE COMPLIANCE WITH DPW REQUIREMENTS PER SECTION 18.114(c) OF THE HOWARD COUNTY CODE.

**PART II - WATER**

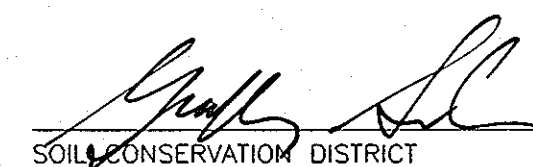
- ALL WATER MAINS SHALL BE PVC C-900 UNLESS OTHERWISE NOTED.
- TOPS OF ALL WATER MAINS TO HAVE A MINIMUM OF 3'-6" COVER UNLESS OTHERWISE NOTED.
- VALVES ADJACENT TO TEES SHALL BE STRAPPED TO TEES.
- ALL FITTINGS SHALL BE BUTTRESSED OR ANCHORED WITH CONCRETE IN ACCORDANCE WITH THE STANDARD DETAILS UNLESS OTHERWISE PROVIDED FOR ON THE DRAWINGS.
- FIRE HYDRANTS SHALL BE SET TO THE BURY LINE ELEVATIONS SHOWN ON THE DRAWINGS. ALL FIRE HYDRANTS SHALL BE INSTALLED IN ACCORDANCE WITH STANDARD DETAILS. THE SOIL AROUND THE FIRE HYDRANT SHALL BE COMPACTED IN ACCORDANCE WITH SECTION 1000 AND 1005 OF THE STANDARD SPECIFICATIONS.
- THE CONTRACTOR SHALL NOT OPERATE ANY WATER MAIN VALVES ON THE EXISTING WATER SYSTEM.
- ALL WATER HOUSE CONNECTIONS SHALL BE FOR INSIDE METER SETTING UNLESS OTHERWISE NOTED ON PLANS OR IN SPECIFICATIONS.
- FOR SPRINKLER SYSTEM FOR ALL TOWN HOMES OR MULTI-FAMILY DWELLING UNITS SHOULD HAVE A MINIMUM OF 1' CONNECTION WITH A 3/4" METER.

**PART III - SEWER**

- ALL SEWER MAINS SHALL BE D.I.P. OR P.V.C UNLESS OTHERWISE NOTED.
- ALL MANHOLES SHALL BE 4'-0" INSIDE DIAMETER UNLESS OTHERWISE NOTED.
- FORCE MAINS SHALL BE D.I.P. ONLY.
- MANHOLES SHOWN WITH 12" AND 16" WALLS ARE FOR BRICK MANHOLES ONLY.
- MANHOLES DESIGNATED W.T. IN PLAN AND PROFILE SHALL HAVE WATERTIGHT FRAME AND COVER, STANDARD DETAIL 65.52. WHERE WATERTIGHT FRAME AND COVER IS USED, SET TOP OF FRAME 1'-6" ABOVE FINISHED GRADE UNLESS OTHERWISE NOTED ON THE DRAWINGS.
- HOUSE(S) WITH THE SYMBOL "C.N.S." INDICATES THAT CELLAR CANNOT BE SERVED.

SEDIMENT CONTROL MEASURES WILL BE IMPLEMENTED IN ACCORDANCE WITH SECTION 219 OF THE SPECIFICATIONS AND WITH SITE DEVELOPMENT PLAN F-09-112.

THIS DEVELOPMENT IS APPROVED FOR SOIL EROSION AND SEDIMENT CONTROL BY THE HOWARD COUNTY CONSERVATION DISTRICT.

 5/10/10  
DATE

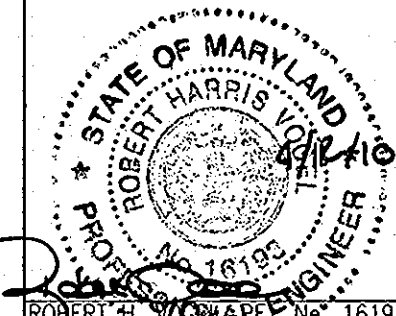
DEPARTMENT OF PUBLIC WORKS  
HOWARD COUNTY, MARYLAND

DEPARTMENT OF PLANNING & ZONING  
HOWARD COUNTY, MARYLAND

 4/15/10  
DATE

 5/17/10  
DATE

**ROBERT H. VOGEL**  
**ENGINEERING, INC.**  
ENGINEERS • SURVEYORS • PLANNERS  
8407 MAIN STREET  
ELLCOTT CITY, MD 21043 TEL: 410.461.7666  
FAX: 410.461.8961



PROFESSIONAL CERTIFICATE  
I HEREBY CERTIFY THAT THESE DOCUMENTS WERE PREPARED OR APPROVED BY ME AND THAT I AM A DULY LICENSED PROFESSIONAL ENGINEER UNDER THE LAWS OF THE STATE OF MARYLAND, LICENSE NO. 18193 EXPIRATION DATE: 09-27-2010

DRN: KG DES: RHV  
CHK: RHV  
DATE: APRIL 2010

NO. **AS-BUILT** REVISION

DATE FEB 2012

**FINAL WATER & SEWER PLAN  
COVER SHEET**

600' SCALE MAP NO. 47

BLOCK NO. 6 & 24

**THE GLENS AT GUILFORD**  
LOTS 1-10 & OPEN SPACE LOTS 11-13  
A RESUBDIVISION OF LOTS 1 & 2-A  
(P.46 & P.81), BLOCK E-3  
NORDAU SUBDIVISION  
**CONTRACT 24-4454-D**

TAX MAP 47 GRID 6&24  
6TH ELECTION DISTRICT

PARCEL 46 & 815  
HOWARD COUNTY, MARYLAND

SCALE AS SHOWN

SHEET 1 OF 3

# FINAL WATER & SEWER PLAN

## THE GLENS AT GUILFORD

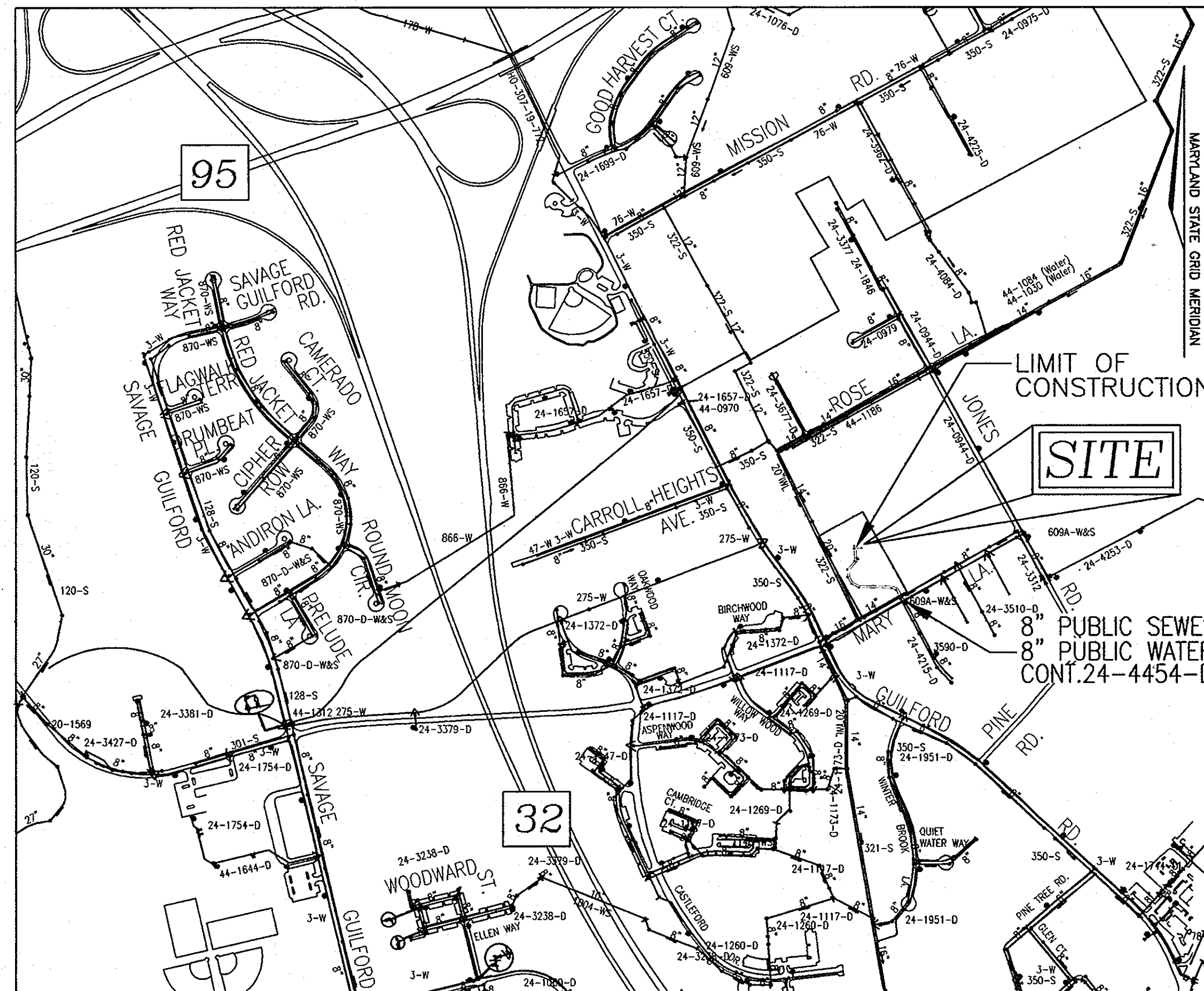
### LOTS 1-10 & OPEN SPACE LOTS 11-13

### A RESUBDIVISION OF LOTS 1 & 2-A

### PARCEL 46 & 815, BLOCK E-3

### NORDAU SUBDIVISION

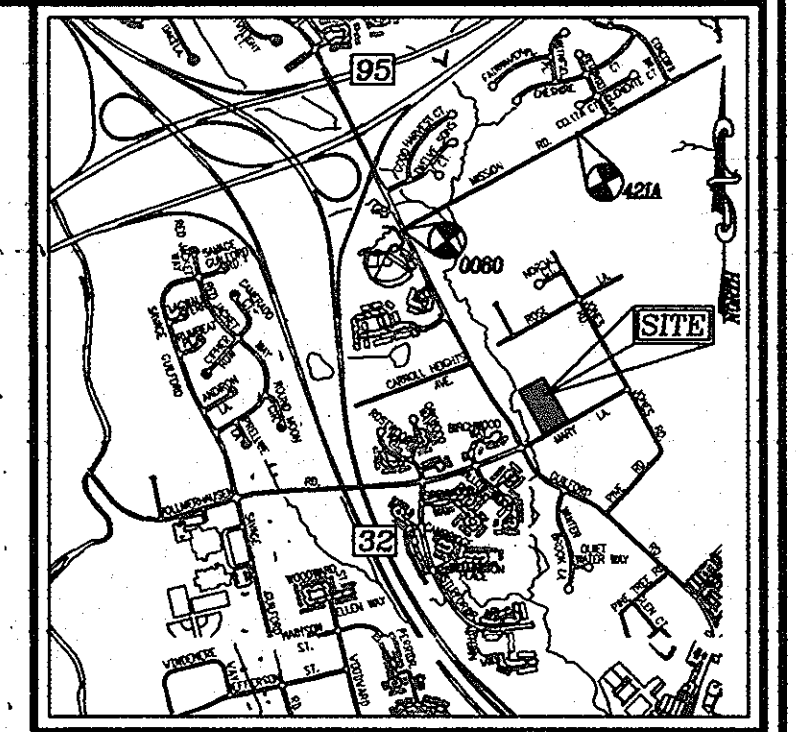
### CONT.NO. 24-4454-D



WATER ZONE: 400  
TEST GRADIENT: 550

**VICINITY MAP**  
SCALE: 1"=600'

TYPE OF BUILDING :	SINGLE FAMILY DETACHED
NO. OF LOTS/PARCELS :	12
NO. OF SINGLE WATER HOUSE CONNECTIONS :	10
NO. OF TWIN WATER HOUSE CONNECTIONS :	0
NO. OF SINGLE SEWER HOUSE CONNECTIONS :	8
NO. OF TWIN SEWER HOUSE CONNECTIONS :	1
DRAINAGE AREA :	LITTLE PATUXENT RIVER
TREATMENT PLANT :	LITTLE PATUXENT RIVER



**LOCATION MAP**  
SCALE: 1"=2000'  
ADC COORDINATE= 5053 K6

**LEGEND**

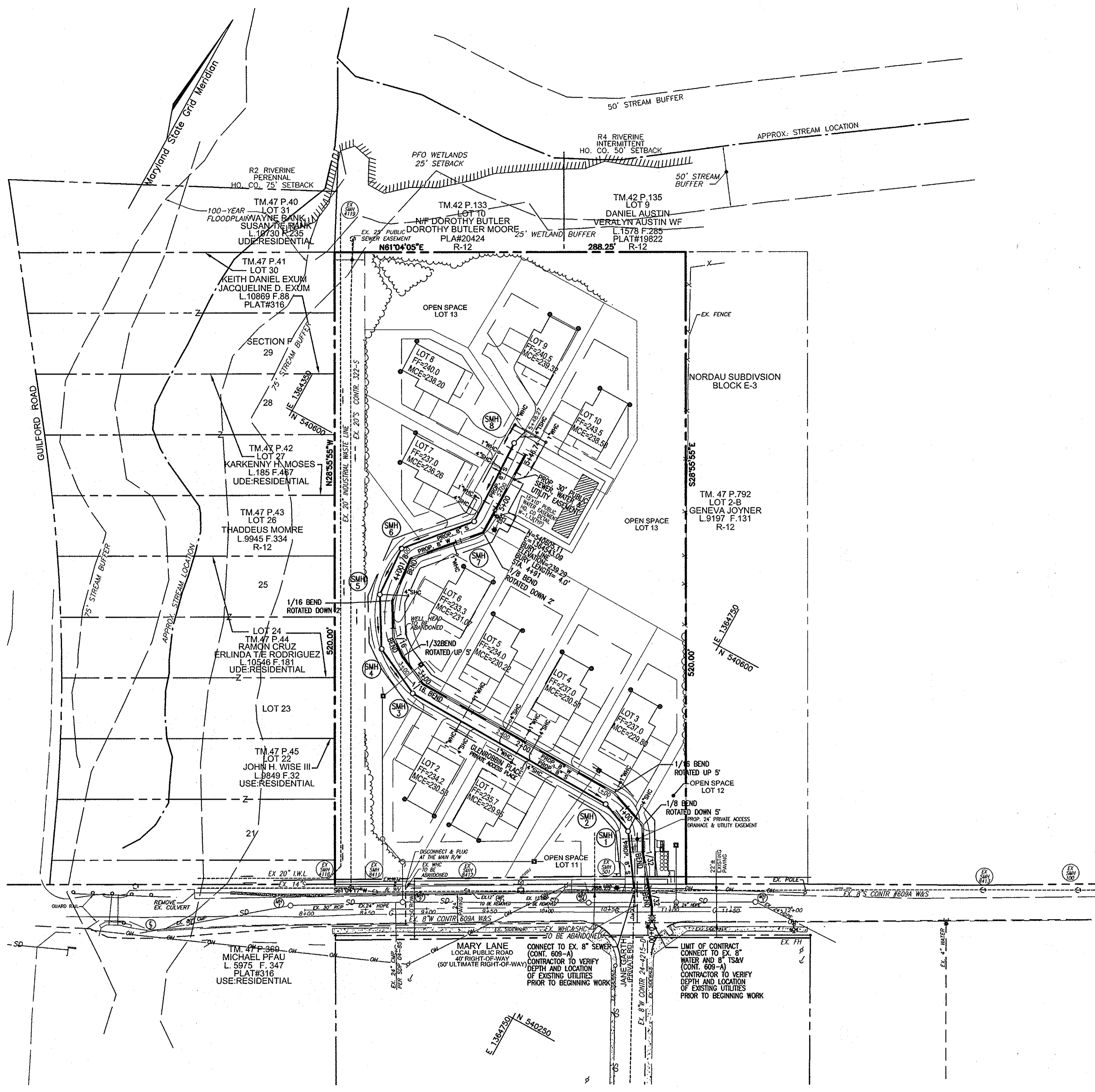
- EXISTING WATER MAIN
- PROPOSED WATER MAIN
- FIRE HYDRANT
- PROPOSED VALVE
- PROPOSED TEE
- PROPOSED STORM DRAIN
- EXISTING STORM DRAIN
- PROPOSED SEWER
- EXISTING SEWER
- SEWER MANHOLE
- WATER HOUSE CONNECTION
- SEWER HOUSE CONNECTION
- PROPOSED SIGN
- PROPOSED LIGHT

**QUANTITIES**

NAME OF UTILITY CONTRACTOR : <i>GCC</i>				
SURVEY AND DRAFTING DIVISION AS-BUILT DATE :				
ITEMS	QUANTITIES ESTIMATED	AS-BUILT		
		QUANTITIES	TYPE	MANUFACTURER/SUPPLIER
WATER				
8" TAPPING SLEEVE	1 EA	1.0 EA	PLATHLESS STEEL	FORD METER BOX
8" WATER	547 LF	531 L.F.	PVC-900	JM EAGLE
8" x 6" TEE	1 EA	2.0 EA	O.T.F.	SIGMA
8" VALVE	2 EA	2.0 EA	GATE	KENNEDY VALVE
6" VALVE	1 EA	1.0 EA	GATE	KENNEDY VALVE
6" FIRE HYDRANT	1 EA	1.0 EA	SOFT 'K'	KENNEDY VALVE
1" WHC	144 LF	189 L.F.	SOFT 'K'	CAMBERIDGE LEE
SEWER				
8" SEWER	527 LF	497 L.F.	SDR-35	JM EAGLE
MANHOLE	8 EACH	8.0 EA	PRE-CAST CON.	JM EAGLE
4" SHC	140 LF	184 L.F.	SDR-35	JM EAGLE

**PROPERTIES WITH WELL AND SEPTIC**

ADDRESS	EXISTING SEPTIC	EXISTING WELL
8780 MARY LANE	-	TO BE ABANDONED



\*NOTE:  
EXISTING WHC'S AND SHC'S FOR 8780 AND 8770 MARY LANE  
ARE TO BE ABANDONED, DISCONNECTED AND PLUGGED AT THE MAIN.

LAYOUT PLAN  
SCALE: 1"=50'

THE GLENS @ GUILDFORD, LOTS 1-10  
CONT. NO 24-4454-D

FROM	TO	MEASUREMENT
WHC LOT #10	SMH-8	29'
WHC LOT #10	FIRE HYDRANT @ STA. 4+91	73'
WHC LOT #9	SMH-8	15'
WHC LOT #9	FIRE HYDRANT @ STA. 4+91	78'
WHC LOT #8	SMH-8	15'
WHC LOT #8	FIRE HYDRANT @ STA. 4+91	53'
WHC LOT #7	SMH-8	53'
WHC LOT #7	FIRE HYDRANT @ STA. 4+91	31'
WHC LOT #6	SMH-7	30'
WHC LOT #6	FIRE HYDRANT @ STA. 4+91	48'
WHC LOT #5	SMH-3	48'
WHC LOT #5	SMH-4	82.5'
WHC LOT #4	SMH-2	87'
WHC LOT #4	SMH-3	99'
WHC LOT #3	SMH-2	22.5'
WHC LOT #3	SMH-1	40'
WHC LOT #2	SMH-3	47'
WHC LOT #2	SMH-4	88.5'
WHC LOT #1	SMH-2	85.5'
WHC LOT #1	SMH-3	98.5'
SMH-8	8" VALVE @ STA. 4+95	54'
SMH-8	FIRE HYDRANT @ STA. 4+91	61'
FIRE HYDRANT @ STA. 4+91	6" VALVE @ STA. 4+91	6.5'
CONT. TEST STA @ F.H. @ 4+91	6" VALVE @ STA. 4+91	7.6'
CONT. TEST STA @ F.H. @ 4+91	8" VALVE @ STA. 4+95	12'
6" VALVE @ STA. 4+91	8" VALVE @ STA. 4+95	5'
8" VALVE @ STA. 4+95	FIRE HYDRANT @ STA. 4+91	9'
8" VALVE @ STA. 4+95	SMH-7	20'
6" VALVE @ STA. 4+91	SMH-7	16.5'
FIRE HYDRANT @ STA. 4+91	SMH-7	21'
SHC LOT #10	SMH-8	21'
SHC LOT #10	FIRE HYDRANT @ STA. 4+91	75'
SHC LOT #9	SMH-8	17'
SHC LOT #9	FIRE HYDRANT @ STA. 4+91	76'
SHC LOT #8	SMH-8	22'
SHC LOT #8	FIRE HYDRANT @ 4+91	46'
SHC LOT #7	FIRE HYDRANT @ 4+91	27'
SHC LOT #7	6" VALVE @ 4+91	22'
SHC LOT #6	SMH-7	81'
SHC LOT #6	SMH-6	
SHC LOT #5	SMH-2	104'
SHC LOT #5	SMH-8	81.5'
SHC LOT #4	SMH-2	77'
SHC LOT #4	SMH-1	111'
SHC LOT #3	SMH-1	24'
SHC LOT #3	SMH-2	31'
SHC LOT #2	SMH-3	66.5'
SHC LOT #2	SMH-4	96'
SHC LOT #1	SMH-3	105'
SHC LOT #1	SMH-4	146'
8" TAPPING VALVE @ STA. 0+04	EX. SMH-501	28.5'
EX. SMH-501	CONT. TEST STA.	19.5'
CONT. TEST STA. @ ENTRANCE	8" TAPPING VALVE @ STA. 0+04	37.5'
SMH-8	SMH-7	71'
SMH-7	SMH-6	63.5'
SMH-6	SMH-5	43'
SMH-5	SMH-4	44'
SMH-4	SMH-3	44'
SMH-4	I-5	38'
SMH-3	I-6	24'
CONT. TEST STA. @ END	SMH-8	28.5'
CONT. TEST STA. @ END	8" VALVE @ STA. 4+95	67'

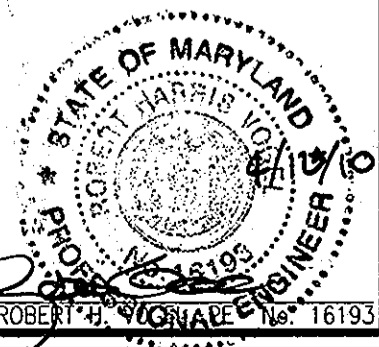
DEPARTMENT OF PUBLIC WORKS  
HOWARD COUNTY, MARYLAND

*Steve Clum*  
CHIEF, BUREAU OF UTILITIES

DEPARTMENT OF PLANNING & ZONING  
HOWARD COUNTY, MARYLAND

*Mike Damm*  
CHIEF, DEVELOPMENT ENGINEERING DIVISION

**ROBERT H. VOGEL**  
**ENGINEERING, INC.**  
ENGINEERS • SURVEYORS • PLANNERS  
8407 MAIN STREET  
ELICOTT CITY, MD 21043 TEL: 410.461.2886  
FAX: 410.461.8961



PROFESSIONAL CERTIFICATE  
I HEREBY CERTIFY THAT THESE DOCUMENTS  
WERE PREPARED OR APPROVED BY ME AND  
THAT I AM A DULY LICENSED PROFESSIONAL  
ENGINEER UNDER THE LAWS OF THE STATE  
OF MARYLAND, LICENSE NO. 16193  
EXPIRATION DATE: 09-27-2010

DRN: KG DES: RHV  
CHK: RHV  
DATE: APRIL 2010

NO.	REVISION	DATE
	AS-BUILT	FEB 2012

FINAL WATER & SEWER PLAN  
LAYOUT PLAN

600' SCALE MAP NO. 47

DEVELOPER  
HOWARD COUNTY HOUSING COMMISSION  
6751 GATEWAY DRIVE  
COLUMBIA, MARYLAND 21044  
410-313-6316

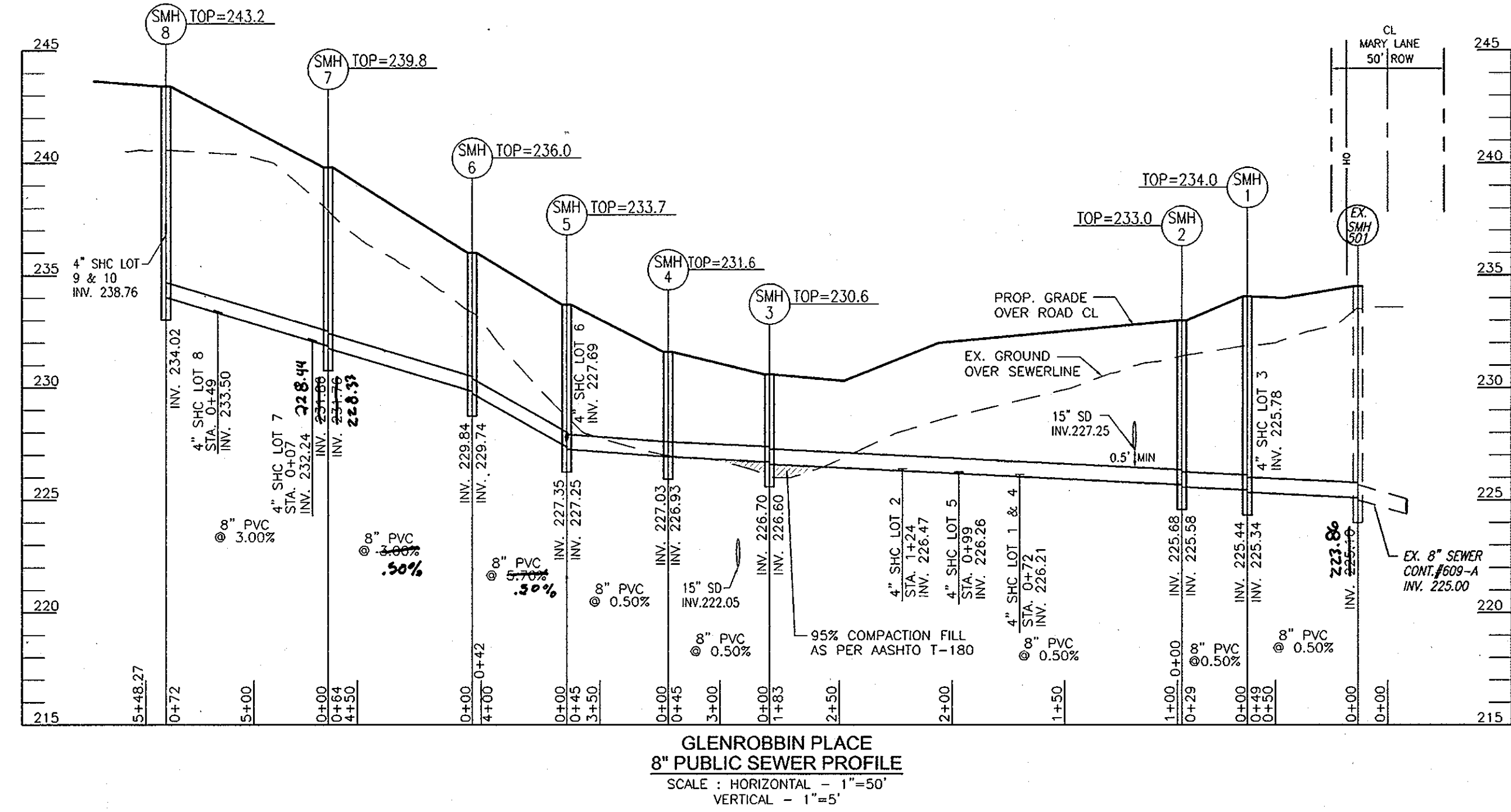
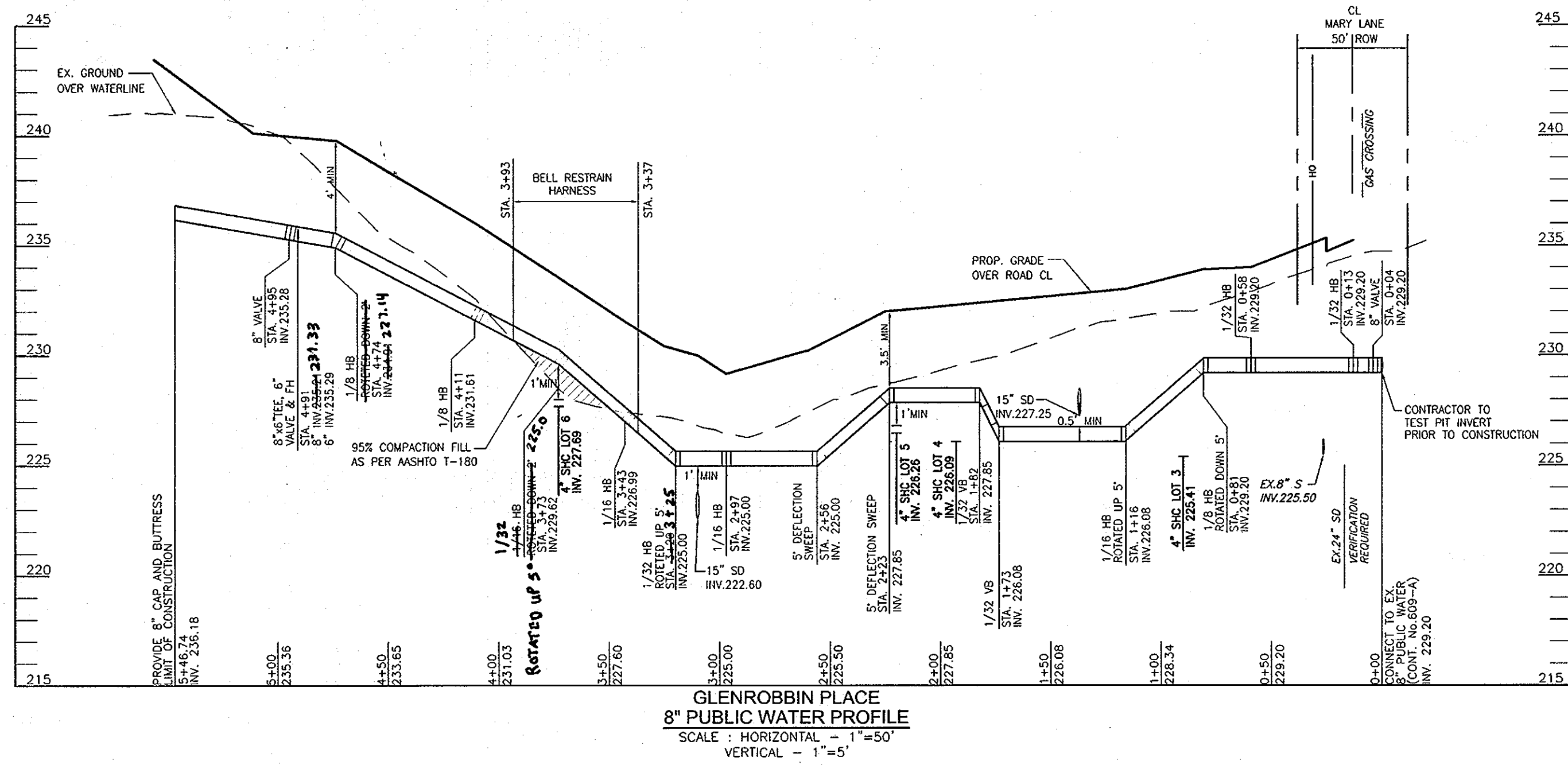
THE GLENS AT GUILDFORD  
LOTS 1-10 & OPEN SPACE LOTS 11-13  
A RESUBDIVISION OF LOTS 1 & 2-A,  
(P.46 & P.815), BLOCK E-3  
NORDAU SUBDIVISION  
CONTRACT 24-4454-D

TAX MAP 47 GRID 6&24  
6TH ELECTION DISTRICT

PARCEL 46 & 815  
HOWARD COUNTY, MARYLAND

SCALE  
AS  
SHOWN

SHEET  
2 OF 3



SEWER MANHOLE SCHEDULE						
NO.	TYPE	LOCATION		TOP ELEV.	INV. IN	INV. OUT
		NORTHING	EASTING			
SMH 1	STD. PRECAST MH HO. CO. STD. DET. GS.12	CL ROAD STA. 0+63.4	5.1'L/T.	234.0	225.44	225.34
SMH 2	STD. PRECAST MH HO. CO. STD. DET. GS.12	CL ROAD STA. 0+98.0	5.9'L/T.	233.0	225.68	225.58
SMH 3	STD. PRECAST MH HO. CO. STD. DET. GS.12	CL ROAD STA. 2+79.6	6.0'L/T.	230.6	226.70	226.60
SMH 4	STD. PRECAST MH HO. CO. STD. DET. GS.12	CL ROAD STA. 3+21.3	7.0'L/T.	231.6	227.03	226.93
SMH 5	STD. PRECAST MH HO. CO. STD. DET. GS.12	CL ROAD STA. 3+63.2	5.9'L/T.	233.7	227.35	227.25
SMH 6	STD. PRECAST MH HO. CO. STD. DET. GS.12	CL ROAD STA. 4+02.2	6.7'L/T.	236.0	229.84	229.74
SMH 7	STD. PRECAST MH HO. CO. STD. DET. GS.12	CL ROAD STA. 4+64.6	5.0'L/T.	239.8	231.86	231.76
SMH 8	STD. PRECAST MH HO. CO. STD. DET. GS.12	CL ROAD STA. 5+39.2	5.9'L/T.	243.2	-	234.02

LOT #	SLOPE	ELEV. MAIN	DIS.	ELEV. @ ROW	DIS	ELE. @ UNIT	M.C.E
1	0.02	226.21	10	226.41	62	227.45	229.95
2	0.02	226.47	10	226.67	78	228.03	230.53
3	0.02	225.78	19	226.16	76	227.3	229.8
4	0.02	226.21	22	226.65	90	228.01	230.51
5	0.02	226.26	22	226.7	73	227.72	230.22
6	0.02	227.69	19	228.07	44	228.57	231.07
7	0.02	232.24	10	232.44	76	233.76	236.26
8	0.02	233.5	8	233.66	110	235.7	238.2
9	0.02	234.36	12	234.6	123	236.82	239.32
10	0.02	234.36	18	234.72	86	236.08	238.58

WATER MAIN LOCATION CHART	
WL STA.	APPURTENANCE
WL STA. 0+04	8" VALVE
WL STA. 0+13	1/32 HORIZONTAL BEND
WL STA. 0+58	1/32 HORIZONTAL BEND
WL STA. 0+81	1/8 HORIZONTAL BEND, ROTATED DOWN 5"
WL STA. 1+16	1/16 HORIZONTAL BEND, ROTATED UP 5"
WL STA. 2+97	1/16 HORIZONTAL BEND
WL STA. 3+20	1/32 HORIZONTAL BEND, ROTATED UP 5"
WL STA. 3+43	1/16 HORIZONTAL BEND
WL STA. 3+73	1/16 HORIZONTAL BEND, ROTATED DOWN 2"
WL STA. 4+11	1/8 HORIZONTAL BEND
WL STA. 4+74	1/8 HORIZONTAL BEND, ROTATED DOWN 2"
WL STA. 4+91	8"x6" TEE, 6" VALVE & FH
WL STA. 4+95	8" VALVE
WL STA. 5+46.74	8" CAP & BUTTRESS

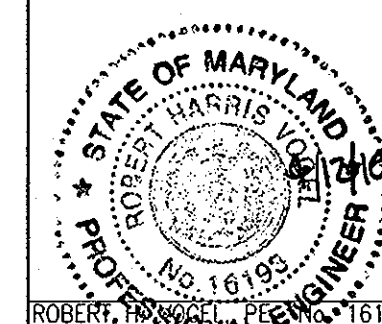
SEWER HOUSE CONNECTION AS-BUILT LOCATION TABLE				WATER HOUSE CONNECTION AS-BUILT LOCATION TABLE			
LOT NUMBER	ADDRESS	LOCATION DIMENSION 1	LOCATION DIMENSION 2	LOT NUMBER	ADDRESS	LOCATION DIMENSION 1	LOCATION DIMENSION 2
LOT 1				LOT 1			
LOT 2				LOT 2			
LOT 3				LOT 3			
LOT 4				LOT 4			
LOT 5				LOT 5			
LOT 6				LOT 6			
LOT 7				LOT 7			
LOT 8				LOT 8			
LOT 9				LOT 9			
LOT 10				LOT 10			

DEVELOPER  
 HOWARD COUNTY HOUSING COMMISSION  
 6751 GATEWAY DRIVE  
 COLUMBIA, MARYLAND 21044  
 410-313-6316

DEPARTMENT OF PUBLIC WORKS  
 HOWARD COUNTY, MARYLAND  
 Chief, Bureau of Utilities  
 4/30/10

DEPARTMENT OF PLANNING & ZONING  
 HOWARD COUNTY, MARYLAND  
 Chief, Development Engineering Division  
 5/17/10

**ROBERT H. VOGEL**  
**ENGINEERING, INC.**  
 ENGINEERS • SURVEYORS • PLANNERS  
 8407 MAIN STREET  
 ELLICOTT CITY, MD 21043 TEL: 410.461.2666  
 FAX: 410.461.8961



PROFESSIONAL CERTIFICATE  
 I HEREBY CERTIFY THAT THESE DOCUMENTS  
 WERE PREPARED OR APPROVED BY ME AND  
 THAT I AM A DULY LICENSED PROFESSIONAL  
 ENGINEER UNDER THE LAWS OF THE STATE  
 OF MARYLAND, LICENSE NO. 16193  
 EXPIRATION DATE: 09-27-2010  
 DRN: KG DES: RHV  
 CHK: RHV  
 DATE: APRIL 2010

AS-BUILT

FINAL WATER & SEWER PLAN  
 WATER & SEWER PROFILES

THE GLENS AT GUILFORD  
 LOTS 1-10 & OPEN SPACE LOTS 11-13  
 A RESUBDIVISION OF LOTS 1 & 2-A  
 (P.46 & P.815), BLOCK E-3  
 NORDAL SUBDIVISION  
**CONTRACT 24-4454-D**

SCALE AS SHOWN  
 SHEET 3 OF 3

TAX MAP 47 GRID 6&24 PARCEL 46 & 815  
 6TH ELECTION DISTRICT HOWARD COUNTY, MARYLAND