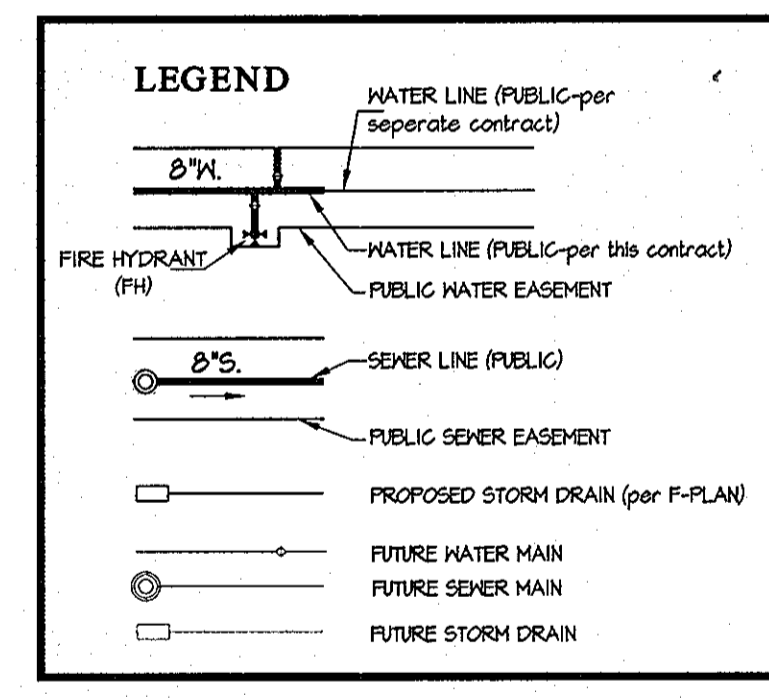


ITEMS	QUANTITIES ESTIMATED	AS-BUILT		
		QUANTITIES	TYPE	MANUFACTURER/SUPPLIER
12" WATER MAIN	174 L.F.	174'	DIP, CL. 54	GRIFFIN PIPE PRODUCTS CO.
8" WATER MAIN	1026 L.F.	1026'	DIP, CL. 54	GRIFFIN PIPE PRODUCTS CO.
6" WATER MAIN	309 L.F.	309'	DIP, CL. 54	GRIFFIN PIPE PRODUCTS CO.
4" WATER MAIN	542 L.F.	542'	DIP, CL. 54	GRIFFIN PIPE PRODUCTS CO.
1-1/2" W/C	1104 L.F.	900'	COPPER	CAMBRIDGE LEE/HD SUPPLY
TRIN 1" METER BOX	21 EA.	32 EA.	CORPORATION	FORD METER BOX/HD SUPPLY
SINGLE 1" METER BOX	10 EA.	9 EA.	CORPORATION	FORD METER BOX/HD SUPPLY
12" 1/16 HB	1 EA.	1 EA.	MJ 22 1/2 BEND	SIGMA/HD SUPPLY
12" VALVE	2 EA.	2 EA.	GATE VALVE	KENNEDY VALVE/HD SUPPLY
12"x8" TEE	1 EA.	1 EA.	MJ TEE	SIGMA/HD SUPPLY
12"x6" T (FHT)	1 EA.	1 EA.	MJ FHT	SIGMA/HD SUPPLY
12" CAP & BUTTRSS	1 EA.	1 EA.	MJ CAP	SIGMA/HD SUPPLY
8" VALVE	1 EA.	1 EA.	GATE VALVE	KENNEDY VALVE/HD SUPPLY
8"x6" REDUCER	1 EA.	1 EA.	MJ REDUCER	SIGMA/HD SUPPLY
8" CAP & BUTTRSS	1 EA.	1 EA.	MJ CAP	SIGMA/HD SUPPLY
8"x6" T (FHT)	2 EA.	2 EA.	MJ FHT	SIGMA/HD SUPPLY
8"x4" TEE	3 EA.	3 EA.	MJ TEE	SIGMA/HD SUPPLY
6" 1/16 HB	1 EA.	1 EA.	MJ 45° BEND	SIGMA/HD SUPPLY
6" CAP & BUTTRSS	1 EA.	1 EA.	MJ CAP	SIGMA/HD SUPPLY
4" VALVE	3 EA.	3 EA.	GATE VALVE	KENNEDY VALVE/HD SUPPLY
4" 1/16 HB	2 EA.	2 EA.	MJ 45° BEND	SIGMA/HD SUPPLY
FIRE HYDRANT - 5.5'	3 EA.	3 EA.	5.5' FH	KENNEDY VALVE/HD SUPPLY
8" D.I.P. SEWER	680 L.F.	680'	DIP, CL. 54	GRIFFIN PIPE PRODUCTS CO.
8" P.V.C. SEWER	803 L.F.	803'	PVC, SDR-35	3M/EAGLE/HD SUPPLY
4" P.V.C. (S/C)	1612 L.F.	1612'	PVC, SDR-35	3M/EAGLE/HD SUPPLY
MANHOLES	15 EA.	15 EA.	PRECAST CONC	CONTRACTORS PRECAST CORR.

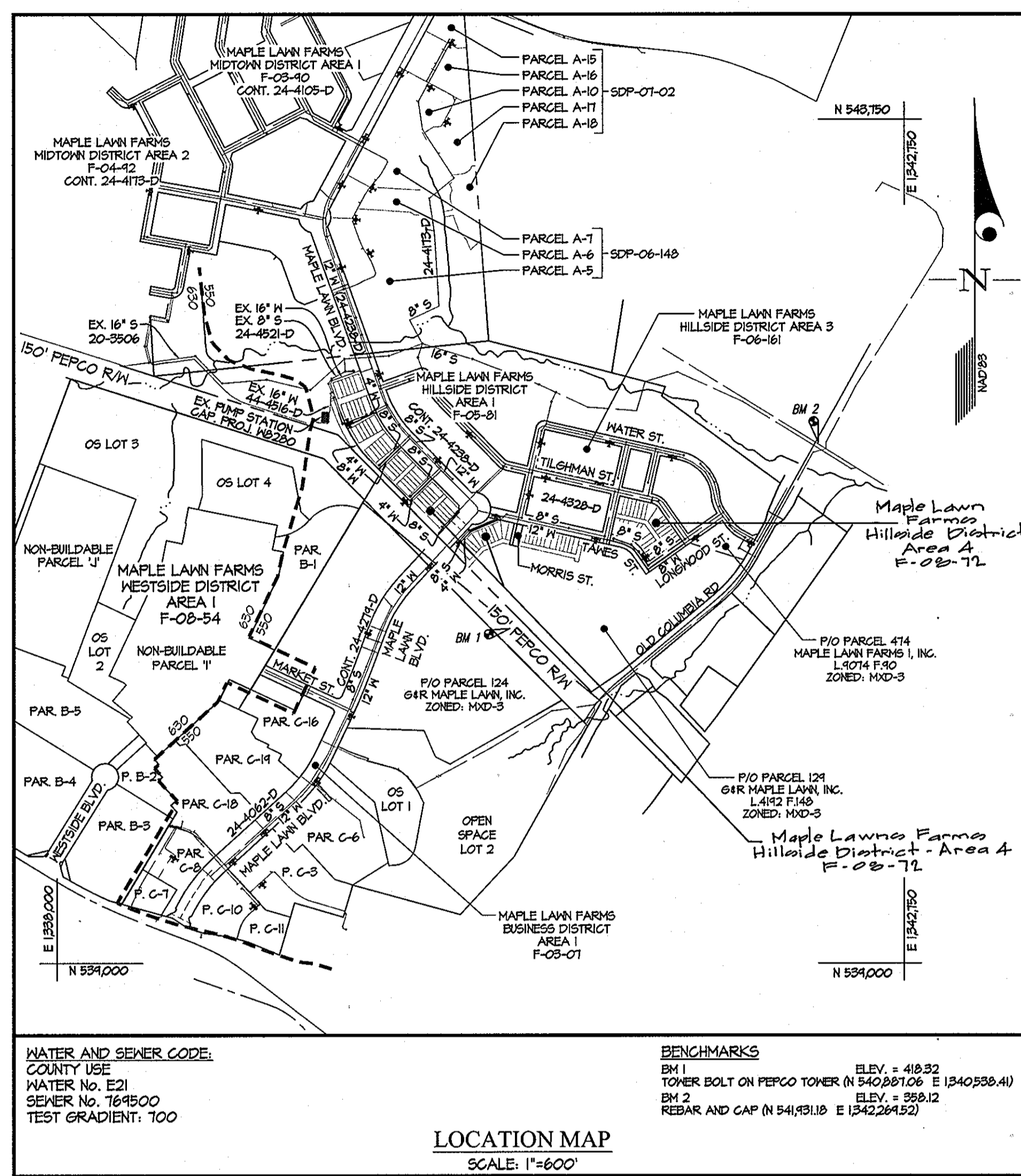
NAME OF UTILITY CONTRACTOR: **GAINES & COMPANY, Inc.**

SURVEY AND DRAFTING DIV. CHECKBOX: AS-BUILT DATE: **MAR 10**



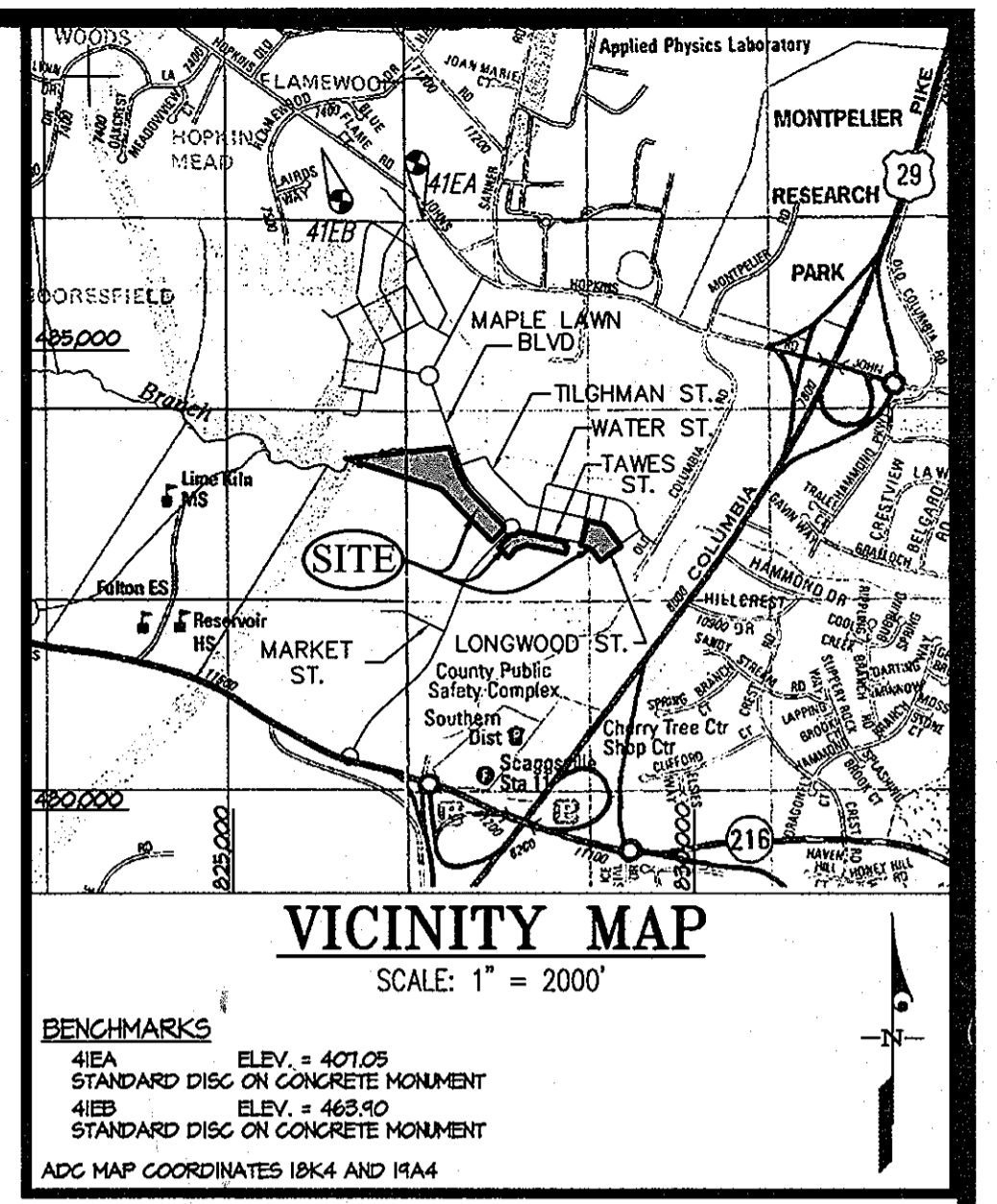
SHEET INDEX

- 1 - COVER SHEET
- 2 - WATER AND SEWER EXTENSION PLAN
- 3 - WATER AND SEWER EXTENSION PLAN
- 4 - WATER AND SEWER PROFILES
- 5 - WATER AND SEWER PROFILES
- 6 - WATER AND SEWER DETAILS



TYPE OF BUILDING	SINGLE FAMILY ATTACHED
NUMBER OF UNITS	100
NUMBER OF S.H.C.'s	76
NUMBER OF W.H.C.'s	77
AREA OF COMMERCIAL LOT/PARCEL	0
SEWER SHED	LITTLE PATUXENT
PUMPING STATION	LITTLE PATUXENT RRP

NOTE: THE W/C'S/S/C'S FOR LOTS 299-329 HAVE BEEN PROVIDED UNDER CONTRACT No. 24-4328-D. THE S/C'S FOR LOTS 244-246 HAVE BEEN PROVIDED UNDER CONTRACT No. 24-4521-D. W/C'S/S/C'S HAVE ALSO BEEN PROVIDED FOR FUTURE LOTS UNDER THESE PLANS. (F1 through F10)



- GENERAL NOTES**
- PART I**
- APPROXIMATE LOCATIONS OF EXISTING MAINS ARE SHOWN. THE CONTRACTOR SHALL TAKE ALL NECESSARY PRECAUTIONS TO PROTECT EXISTING MAINS AND SERVICES AND MAINTAIN UNINTERRUPTED SERVICE. ANY DAMAGE INCURRED SHALL BE REPAIRED IMMEDIATELY TO THE SATISFACTION OF THE ENGINEER AT THE CONTRACTOR'S EXPENSE.
 - TOPOGRAPHIC FIELD SURVEYS WERE PERFORMED IN MAY 1991 BY SDI.
 - HORIZONTAL AND VERTICAL SURVEY CONTROLS:
THE COORDINATES SHOWN ON THE DRAWINGS ARE BASED ON MARYLAND STATE REFERENCE SYSTEM NAD 83/91 AS PROJECTED BY HOWARD COUNTY GEODETIC CONTROL STATIONS No. 41EA AND No. 41EB.
 - ALL VERTICAL CONTROLS ARE BASED ON NAVD 88. VERTICAL CONTROLS PROVIDED ON DRAWINGS ARE STANDARD DISCS ON CONCRETE MONUMENTS.
 - ALL PIPE ELEVATIONS SHOWN ARE INVERT ELEVATIONS UNLESS OTHERWISE NOTED ON THE PLANS.
 - CLEAR ALL UTILITIES BY A MINIMUM OF 12 INCHES. CLEAR ALL POLES BY 5'-0" MINIMUM OR TUNNEL AS REQUIRED UNLESS OTHERWISE NOTED. THE OWNER HAS CONTACTED THE UTILITY COMPANIES AND HAS MADE ARRANGEMENTS FOR BRACING OF POLES AS SHOWN ON THE DRAWINGS. IN THE EVENT THE CONTRACTOR'S WORK REQUIRES BRACING OF ADDITIONAL POLES, ANY COST INCURRED BY THE OWNER FOR THE BRACING OF ADDITIONAL POLES OR DAMAGES SHALL BE DEDUCTED FROM MONIES OWED THE CONTRACTOR. THE CONTRACTOR SHALL COORDINATE WITH THE UTILITY COMPANIES TO SCHEDULE THE BRACING OF THE POLES.
 - FOR DETAILS NOT SHOWN ON THE DRAWINGS, AND FOR MATERIALS AND CONSTRUCTION METHODS, USE HOWARD COUNTY DESIGN MANUAL, VOLUME IV, STANDARD SPECIFICATIONS AND DETAILS FOR CONSTRUCTION (LATEST EDITION). THE CONTRACTOR SHALL HAVE A COPY OF VOLUME IV ON THE JOB.
 - WHERE TEST PITS HAVE BEEN MADE ON EXISTING UTILITIES, THEY ARE NOTED BY THE SYMBOL Φ AT THE LOCATIONS OF THE TEST PITS. A NOTE OR NOTES CONTAINING THE RESULTS OF THE TEST PIT OR PITS IS INCLUDED ON THE DRAWINGS. EXISTING UTILITIES IN THE VICINITY OF THE PROPOSED WORK FOR WHICH TEST PITS HAVE NOT BEEN DUG SHALL BE LOCATED BY THE CONTRACTOR TWO WEEKS IN ADVANCE OF CONSTRUCTION OPERATIONS AT HIS OWN EXPENSE.
 - THE CONTRACTOR SHALL NOTIFY THE FOLLOWING UTILITY COMPANIES OR AGENCIES AT LEAST FIVE WORKING DAYS BEFORE STARTING WORK ON THESE PLANS:

ATT	1-800-252-1133
BGE (CONTRACTOR SERVICES)	410-850-4620
BGE (UNDER GROUND DAMAGE CONTROL)	410-685-1400
BUREAU OF UTILITIES	410-315-4900
COLONIAL PIPELINE CO.	410-745-1340
MISS UTILITY	1-800-257-7777
STATE HIGHWAY ADMINISTRATION	410-531-5553
 - TREES AND SHRUBS ARE TO BE PROTECTED FROM DAMAGE TO THE MAXIMUM EXTENT. TREES AND SHRUBS LOCATED WITHIN THE CONSTRUCTION AREA STRIP ARE NOT TO BE REMOVED OR DAMAGED BY THE CONTRACTOR.
 - THE CONTRACTOR SHALL REMOVE TREES, STUMPS AND ROOTS ALONG THE LINE OF EXCAVATION. PAYMENT FOR SUCH REMOVAL SHALL BE INCLUDED IN THE UNIT PRICE BID FOR CONSTRUCTION OF THE MAIN.
 - THE CONTRACTOR SHALL NOTIFY THE BUREAU OF HIGHWAYS, HOWARD COUNTY, AT (410)-315-1450 AT LEAST FIVE WORKING DAYS BEFORE OPEN CUTTING OR BORING/JACKING OF ANY COUNTY ROAD FOR LAYING WATER/SEWER MAINS OR HOUSE CONNECTIONS. THE APPROVAL OF THESE DRAWINGS WILL CONSTITUTE COMPLIANCE WITH DPM REQUIREMENTS PER SECTION 18.114(g) OF THE HOWARD COUNTY CODE.
- PART II - WATER**
- ALL MAINS SHALL BE D.I.P. CLASS 54 UNLESS OTHERWISE NOTED.
 - TOPS OF ALL WATER MAINS SHALL HAVE A MINIMUM OF 3'-6" OF COVER UNLESS OTHERWISE NOTED.
 - VALVES ADJACENT TO TEES SHALL BE STRAPPED TO TEES.
 - ALL FITTINGS SHALL BE BUTTRRESSED OR ANCHORED WITH CONCRETE IN ACCORDANCE WITH STANDARD DETAILS UNLESS OTHERWISE PROVIDED FOR ON THE DRAWINGS.
 - FIRE HYDRANTS SHALL BE SET TO THE BURY LINE ELEVATIONS SHOWN ON THE DRAWINGS. ALL FIRE HYDRANTS SHALL BE RESTRAINED AND BUTTRRESSED OR ANCHORED WITH CONCRETE IN ACCORDANCE WITH THE STANDARD DETAILS. THE SOIL AROUND THE FIRE HYDRANT SHALL BE COMPACTED IN ACCORDANCE WITH SECTION 1000 AND 1003 OF THE STANDARD SPECIFICATIONS.
 - THE CONTRACTOR SHALL NOT OPERATE ANY WATER MAIN VALVES ON THE EXISTING WATER SYSTEM.
 - ALL WATER HOUSE CONNECTIONS SHALL BE 1/2" WITH A 1" METER.
- PART III - SEWER**
- ALL SEWER MAINS SHALL BE D.I.P. OR P.V.C. UNLESS OTHERWISE NOTED.
 - ALL MANHOLES SHALL BE 4'-0" INSIDE DIAMETER UNLESS OTHERWISE NOTED.
 - FORCE MAINS SHALL BE D.I.P. ONLY.
 - MANHOLES SHOWN WITH THE 12" AND 16" WALLS ARE FOR BRICK MANHOLES ONLY.
 - MANHOLES DESIGNATED W/T IN PLAN AND PROFILE SHALL HAVE WATERTIGHT FRAME AND COVER. STANDARD DETAIL 65.52. WHERE WATERTIGHT MANHOLE FRAMES AND COVERS ARE USED, SET TOP OF FRAME 1'-6" ABOVE FINISHED GRADE UNLESS OTHERWISE NOTED ON THE DRAWINGS.
 - HOUSE(S) WITH THE SYMBOL "C.N.S." INDICATES THE CELLAR CANNOT BE SERVED.
 - ALL SEWER HOUSE CONNECTIONS SHALL BE 4".

CONTRACT No. 24-4430-D
MAPLE LAWN FARMS
HILLSIDE DISTRICT - AREA 4
LOTS 241 THRU 340, OPEN SPACE LOT 341
AND COMMON OPEN AREAS 342 THRU 347
HOWARD COUNTY, MARYLAND
DEPARTMENT OF PUBLIC WORKS

SEDIMENT CONTROL MEASURES WILL BE IMPLEMENTED IN ACCORDANCE WITH SECTION 219 OF THE SPECIFICATIONS & WITH ROAD DRAWINGS F-08-72; DRAWINGS FOR SEDIMENT & EROSION CONTROL.

REVIEWED FOR HOWARD COUNTY CONSERVATION DISTRICT AND MEETS TECHNICAL REQUIREMENT.

SIGNATURE: *[Signature]* DATE: _____

U.S.D.A. NATURAL RESOURCES CONSERVATION SERVICE

THIS DEVELOPMENT PLAN IS APPROVED FOR SOIL EROSION AND SEDIMENT CONTROL BY THE HOWARD COUNTY CONSERVATION DISTRICT.

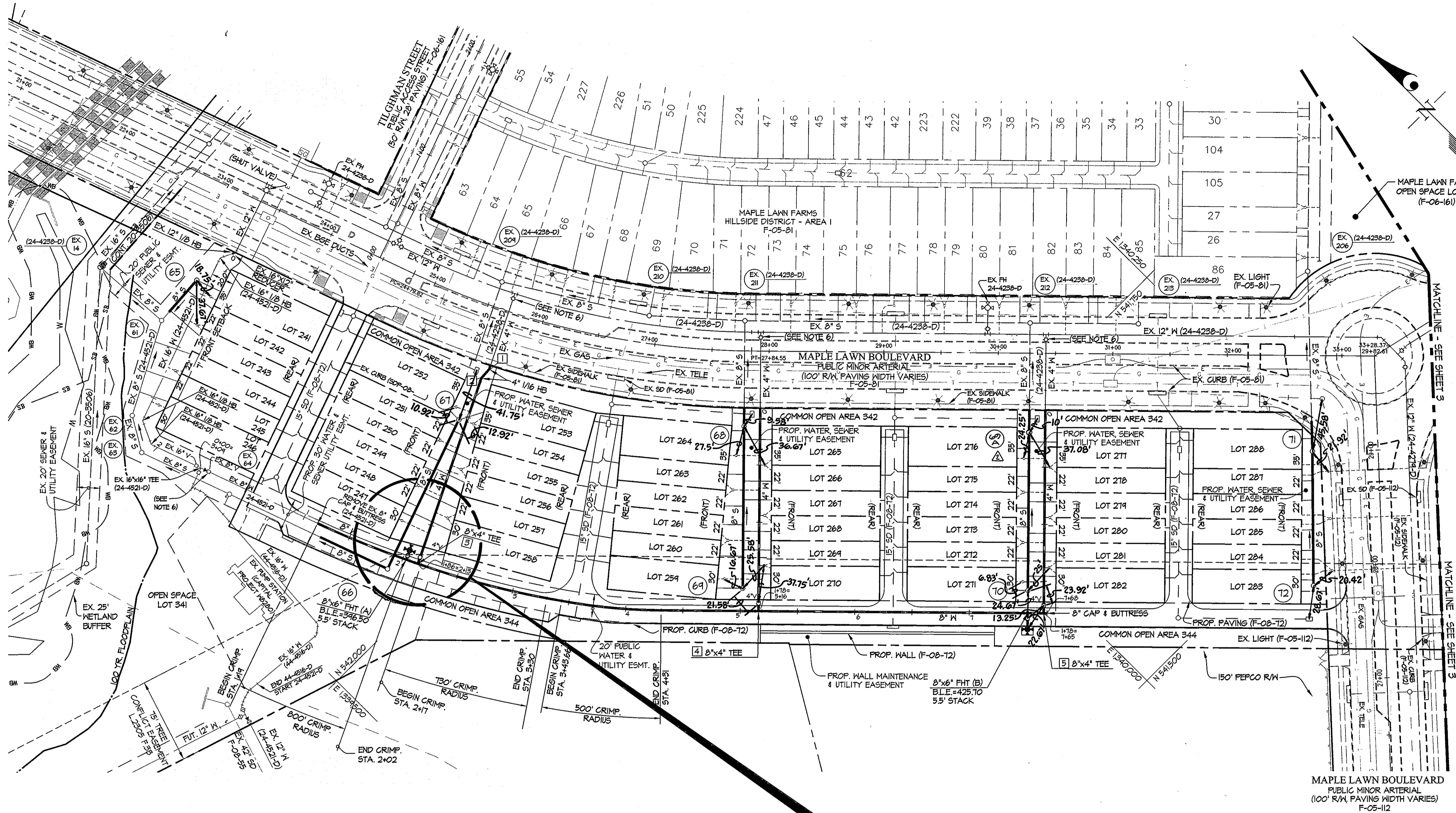
APPROVED: *[Signature]* DATE: **9-30-08**

AS BUILT
DATE: **MARCH 2010**

PREPARED FOR:
G&R MAPLE LAWN, LLC
SUITE 300 WOODHOLME CENTER
1829 REISTERSTOWN ROAD
BALTIMORE, MD 21208
410-484-5400
ATTN: CHARLIE ODOVANO

<p>DEPARTMENT OF PUBLIC WORKS HOWARD COUNTY, MARYLAND</p> <p><i>[Signature]</i> DATE: 10/16/08</p> <p>CHIEF, BUREAU OF UTILITIES</p>	<p>DEPARTMENT OF PLANNING AND ZONING HOWARD COUNTY, MARYLAND</p> <p><i>[Signature]</i> DATE: 10/16/08</p> <p>CHIEF, DEVELOPMENT ENGINEERING DIVISION</p>	<p>GLWGUTSCHICK LITTLE & WEBER, P.A. CIVIL ENGINEERS, LAND SURVEYORS, LAND PLANNERS, LANDSCAPE ARCHITECTS 3909 NATIONAL DRIVE - SUITE 250 - BURTONSVILLE OFFICE PARK BURTONSVILLE, MARYLAND 20866 TEL: 301-421-6024 BALT: 410-880-1820 DC/VA: 301-989-2524 FAX: 301-421-6168</p> <p>DATE: AUG., 2008</p> <p>G.L.W. No. 06001</p> <p>PROFESSIONAL CERTIFICATION I HEREBY CERTIFY THAT THESE PLANS WERE PREPARED OR APPROVED BY ME, AND THAT I AM A DULY LICENSED PROFESSIONAL ENGINEER UNDER THE LAWS OF THE STATE OF MARYLAND, LICENSE NO. 12975 EXP. DATE: MAY 26, 2010</p> <p><i>[Signature]</i></p>	<p>DATE: AUG., 2008</p> <p>G.L.W. No. 06001</p> <p>PROFESSIONAL CERTIFICATION I HEREBY CERTIFY THAT THESE PLANS WERE PREPARED OR APPROVED BY ME, AND THAT I AM A DULY LICENSED PROFESSIONAL ENGINEER UNDER THE LAWS OF THE STATE OF MARYLAND, LICENSE NO. 12975 EXP. DATE: MAY 26, 2010</p> <p><i>[Signature]</i></p>	<p>REVISION</p> <table border="1"> <tr> <td>rev quantities per plan change</td> <td>2/25/10</td> </tr> <tr> <td>rev quantities & number of W/C's & S/C's</td> <td>11/30/09</td> </tr> </table>	rev quantities per plan change	2/25/10	rev quantities & number of W/C's & S/C's	11/30/09	<p>COVER SHEET</p> <p>600' SCALE MAP NO. 41/46 BLOCK NO. 22(41)/4(46)</p>	<p>MAPLE LAWN FARMS CONTRACT No. 24-4430-D HILLSIDE DISTRICT - AREA 4 LOTS 241 THRU 340, OPEN SPACE LOT 341 AND COMMON OPEN AREAS 342 THRU 347 HOWARD COUNTY, MARYLAND ELECTION DISTRICT No. 5</p> <p>SCALE: AS SHOWN SHEET: 1 OF 6</p>
rev quantities per plan change	2/25/10									
rev quantities & number of W/C's & S/C's	11/30/09									

I:\CADD\DRAWINGS\PROJECT\BARGE\4430\0801\WS\06001\WS01.dwg DES. DEV DRN. AWL CHK. DEV DATE: 4/7/10 10:58 AM EDT

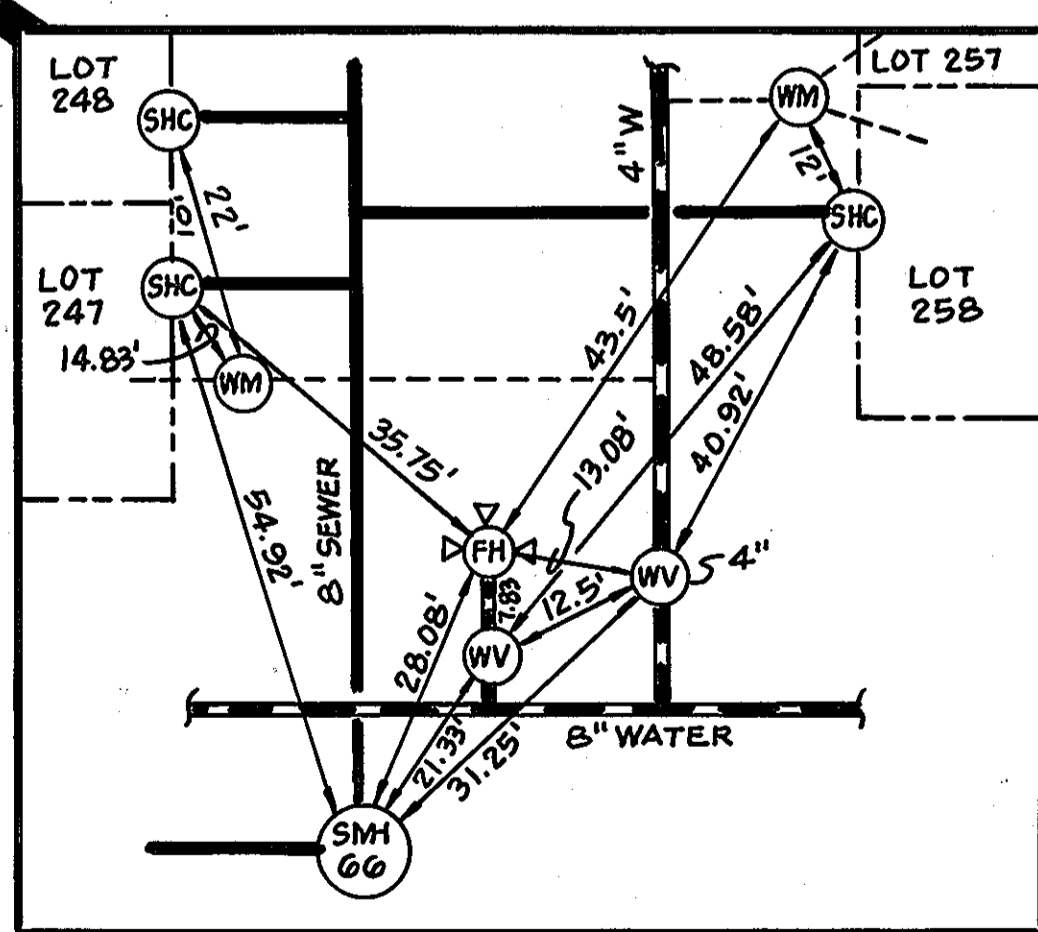


MINIMUM CELLAR ELEVATIONS (M.C.E.)					
LOT	INV. @ R/W	M.C.E.	LOT	INV. @ R/W	M.C.E.
241	312.6	316.8	265	345.1	349.3
242	311.8	316.0	266	345.5	349.7
243	310.8	315.0	267	345.7	349.9
244**	311.1	315.3	268	345.9	400.1
245**	312.2	316.4	269	346.1	400.3
246**	315.1	317.3	270	346.3	400.5
247	380.6	384.8	271	412.8	417.0
248	380.8	385.0	272	412.8	417.0
249	381.5	385.7	273	412.8	417.0
250	381.7	385.9	274	412.8	417.0
251	382.3	386.5	275	412.8	417.0
252*	382.5	386.6	276	412.8	417.0
253	382.8	387.0	277	412.8	417.0
254	382.5	386.7	278	412.8	417.0
255	382.2	386.4	279	412.7	416.9
256	381.4	386.1	280	412.6	416.8
257	381.5	386.2	281	412.7	416.9
258	381.2	385.9	282	412.1	416.3
259	386.5	400.7	283	414.3	418.5
260	386.1	400.3	284	414.0	418.2
261	385.7	399.9	285	413.6	417.8
262	385.5	399.7	286	413.1	417.3
263*	385.1	399.2	287	412.8	417.0
264*	384.7	398.8	288	411.9	416.1

SEWER MANHOLE INFORMATION		
MH	LOCATION	
65	N 542,335.1 E 1,334,662.3	
66	N 542,034.0 E 1,334,602.5	
67	N 542,086.9 E 1,334,731.5	
68	N 541,906.8 E 1,334,904.3	
69	N 541,207.2 E 1,334,208.0	
70	N 541,629.6 E 1,334,482.6	
71	N 541,540.1 E 1,340,244.5	
72	N 541,456.1 E 1,334,161.8	
60A	N 541,127.4 E 1,340,079.4	

APPURTENANCES		
FITTING	LOCATION	
1	4" 1/8" HB	N 542,044.5 E 1,334,181.4
2	4" 1/8" HB	N 542,048.8 E 1,334,171.2
3	8"x4" TEE	N 542,028.0 E 1,334,628.0
4	8"x4" TEE	N 541,783.2 E 1,334,208.6
5	8"x4" TEE	N 541,605.6 E 1,334,918.2

FIRE HYDRANT TEE INFORMATION		
FHT	LOCATION	
(A)	N 542,032.6 E 1,334,618.4	
(B)	N 541,615.6 E 1,334,988.4	



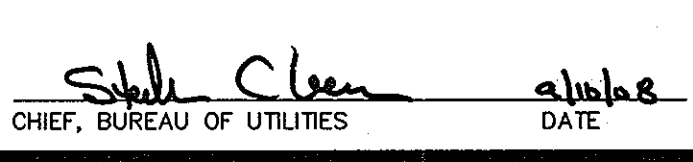
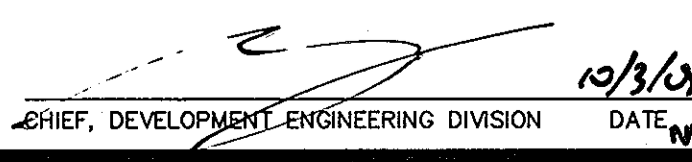
AS BUILT
DATE: MARCH 2010

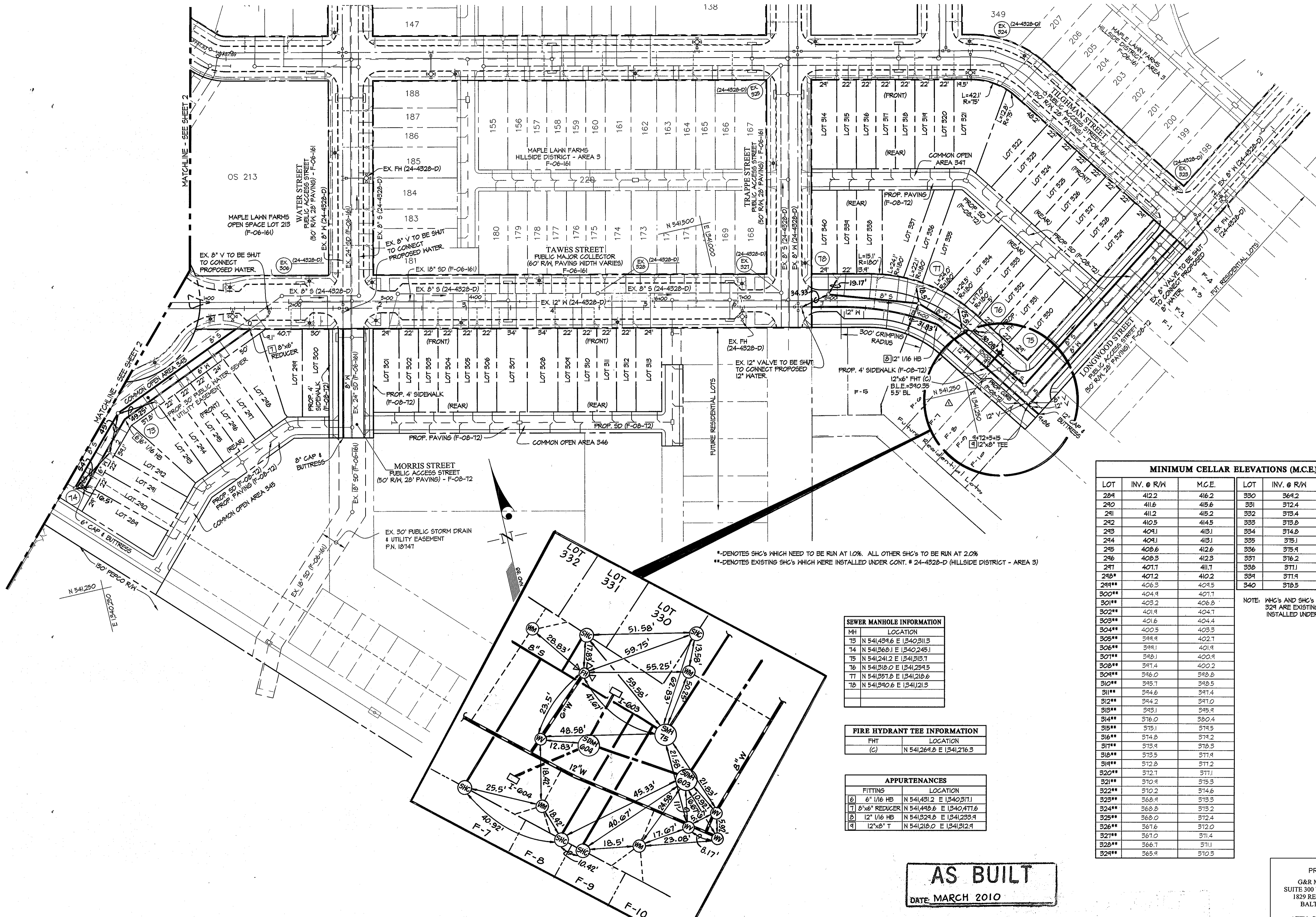
- DESIGN MANUAL WAIVER NOTES:**
- ON MAY 14, 2008 A WAIVER REQUEST TO REDUCE THE CLEARANCE REQUIREMENT FROM 10 FOOT TO 7 FOOT WAS APPROVED BY THE DEPARTMENT OF PUBLIC WORKS. THIS IS A WAIVER FROM SECTION 5.4.B.5 OF THE HOWARD COUNTY DESIGN MANUAL, VOLUME II, WATER AND SEWER.
 - NO IMPROVEMENTS SHALL BE CONSTRUCTED OR PLACED WITHIN THE PUBLIC WATER, SEWER AND UTILITY EASEMENTS WHICH WILL IMPEDE OR HINDER ACCESS TO THE PUBLIC WATER OR SEWER MAINS. IMPROVEMENTS SUCH AS AIR CONDITIONING UNITS, FIREPLACE CHIMNEYS, DECKS, FENCING, FOUNDATION PLANTINGS AND TREES SHALL NOT BE PLACED WITHIN THE EASEMENT.
 - THE CONDITIONS STATED IN NOTE 2 DOES NOT AFFECT THE AGREEMENT IN PLACE FOR MAPLE LAWN FARMS, ALLOWING CONDITIONAL PLACEMENT OF LANDSCAPING IN WATER AND SEWER EASEMENTS.

- NOTES:**
- ALL SEWER HOUSE CONNECTIONS WILL BE 4".
 - ALL MANHOLES WILL BE STD. 40" @ 5.12'.
 - SEE SHEET 6 WATER METER VAULT DETAIL.
 - SEE SHEET 6 FOR DETAIL OF 1-1/2" WATER HOUSE CONNECTION (TYPICAL).
 - SEE SHEET 6 FOR TYPICAL ON-SITE FIRE HYDRANT SETTING DETAIL.
 - EX. VALVE TO BE CLOSED TO CONNECT PROPOSED WATER MAIN.

PREPARED FOR:
G&R MAPLE LAWN, LLC
SUITE 300 WOODHOLME CENTER
1829 REISTERSTOWN ROAD
BALTIMORE, MD 21208
410-484-8400
ATTN: CHARLIE O'DONOVAN

L:\CADD\DRAWINGS\040001\05001\05001\05001\05002-03.dwg 4/16/2008 8:57:05 AM EDT

DEPARTMENT OF PUBLIC WORKS HOWARD COUNTY, MARYLAND 		DEPARTMENT OF PLANNING AND ZONING HOWARD COUNTY, MARYLAND 		GLWGUTSCHICK LITTLE & WEBER, P.A. CIVIL ENGINEERS, LAND SURVEYORS, LAND PLANNERS, LANDSCAPE ARCHITECTS 3909 NATIONAL DRIVE - SUITE 250 - BURTONSVILLE OFFICE PARK BURTONSVILLE, MARYLAND 20866 TEL: 301-421-4024 BALT: 410-880-1820 DC/VA: 301-989-2524 FAX: 301-421-4186		DATE: AUG. 2008 G.L.W. No. 06001 PROFESSIONAL CERTIFICATION: I HEREBY CERTIFY THAT THESE PLANS WERE PREPARED OR APPROVED BY ME, AND THAT I AM A DULY LICENSED PROFESSIONAL ENGINEER UNDER THE LAWS OF THE STATE OF MARYLAND, LICENSE NO. 12975, EXP. DATE: MAY 26, 2010		MAPLE LAWN FARMS CONTRACT No. 24-4430-D HILLSIDE DISTRICT - AREA 4 LOTS 241 THRU 340, OPEN SPACE LOT 341 AND COMMON OPEN AREAS 342 THRU 347 HOWARD COUNTY, MARYLAND ELECTION DISTRICT No. 5		SCALE: 1" = 50' SHEET: 2 OF 6	
WATER AND SEWER EXTENSION PLAN				REVISION: added 1/2" gpm, relocated SHC for lot 270 & re-elevated M.C.E.s				DATE: 2/25/10		600' SCALE MAP NO. 41/46 BLOCK NO. 22(41)/4(46)	



*DENOTES SHC'S WHICH NEED TO BE RUN AT 1.0%. ALL OTHER SHC'S TO BE RUN AT 2.0%
 **DENOTES EXISTING SHC'S WHICH WERE INSTALLED UNDER CONT. # 24-4328-D (HILLSIDE DISTRICT - AREA 3)

MINIMUM CELLAR ELEVATIONS (M.C.E.)					
LOT	INV. @ R/W	M.C.E.	LOT	INV. @ R/W	M.C.E.
284	412.2	416.2	330	369.2	373.2
290	411.6	415.6	331	372.4	376.4
291	411.2	415.2	332	373.4	377.4
292	410.5	414.5	333	373.0	377.0
293	409.1	413.1	334	374.0	378.0
294	409.1	413.1	335	375.1	379.1
295	408.6	412.6	336	375.9	379.9
296	408.3	412.3	337	376.2	380.2
297	407.7	411.7	338	377.1	381.1
298*	407.2	411.2	339	377.9	381.9
299**	406.8	409.5	340	378.5	382.5
300**	404.9	407.1			
301**	403.2	406.0			
302**	401.9	404.7			
303**	401.6	404.4			
304**	400.5	403.3			
305**	399.9	402.7			
306**	399.1	401.9			
307**	398.0	400.9			
308**	397.4	400.2			
309**	396.0	398.0			
310**	395.7	398.5			
311**	394.6	397.4			
312**	394.2	397.0			
313**	393.1	395.9			
314**	392.0	394.8			
315**	391.5	394.5			
316**	391.4	394.2			
317**	391.9	394.5			
318**	391.5	394.1			
319**	391.0	393.6			
320**	391.2	393.8			
321**	390.9	393.5			
322**	390.2	392.8			
323**	389.9	392.5			
324**	389.0	391.6			
325**	388.0	390.6			
326**	387.6	390.2			
327**	387.0	389.6			
328**	386.7	389.3			
329**	385.9	388.5			

NOTE: MHC'S AND SHC'S TO LOTS 299 THRU 329 ARE EXISTING. THEY WERE INSTALLED UNDER CONT. # 24-4328-D.

MH	LOCATION
T3	N 541,439.6 E 1340,311.3
T4	N 541,360.0 E 1340,245.1
T5	N 541,241.2 E 1341,313.7
T6	N 541,310.0 E 1341,234.5
T7	N 541,357.0 E 1341,210.6
T8	N 541,390.6 E 1341,121.3

FHT	LOCATION
(C)	N 541,269.0 E 1341,276.3

FITTING	LOCATION
(6)	6" 1/16 HB N 541,431.2 E 1340,311.1
(7)	8"x6" REDUCER N 541,440.0 E 1340,477.6
(8)	12" 1/16 HB N 541,329.0 E 1341,233.9
(9)	12"x8" T N 541,210.0 E 1341,312.9

AS BUILT
 DATE: MARCH 2010

PREPARED FOR:
 G&R MAPLE LAWN, LLC
 SUITE 300 WOODHOLME CENTER
 1829 REISTERSTOWN ROAD
 BALTIMORE, MD 21208
 410-484-8400
 ATTN: CHARLIE O'DONOVAN

L:\CAD\DRAWINGS\04001\06001\WS\06001\WS02-03.dwg 4/16/2008 8:57:05 AM EDT

DEPARTMENT OF PUBLIC WORKS
 HOWARD COUNTY, MARYLAND
 Chief, Bureau of Utilities
 10/3/14

DEPARTMENT OF PLANNING AND ZONING
 HOWARD COUNTY, MARYLAND
 Chief, Development Engineering Division
 DATE: M.C.

GLWGUTSCHICK LITTLE & WEBER, P.A.
 CIVIL ENGINEERS, LAND SURVEYORS, LAND PLANNERS, LANDSCAPE ARCHITECTS
 3909 NATIONAL DRIVE - SUITE 250 - BURTONSVILLE OFFICE PARK
 BURTONSVILLE, MARYLAND 20866
 TEL: 301-421-4024 BAL: 410-880-1820 DC/VA: 301-989-2524 FAX: 301-421-4186

DATE AUG., 2008
 G.L.W. No. 06001
 PROFESSIONAL CERTIFICATION
 I HEREBY CERTIFY THAT THESE PLANS WERE PREPARED OR APPROVED BY ME, AND THAT I AM A DULY LICENSED PROFESSIONAL ENGINEER UNDER THE LAWS OF THE STATE OF MARYLAND, LICENSE NO. 12975
 EXP. DATE: MAY 26, 2010

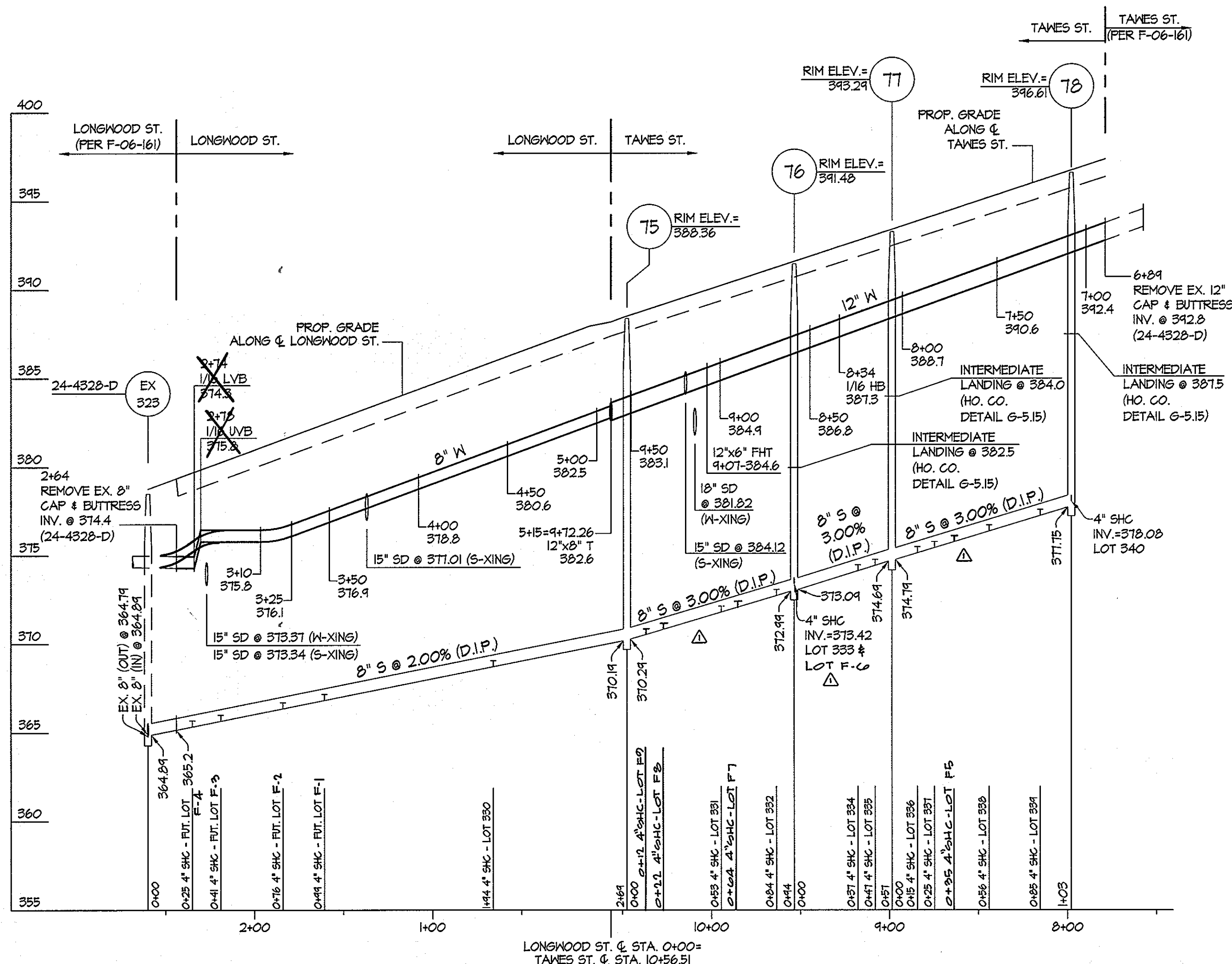


NO	REVISION	DATE
1	rev. future lots F-5 thru F-10 & added connections	11/20/09

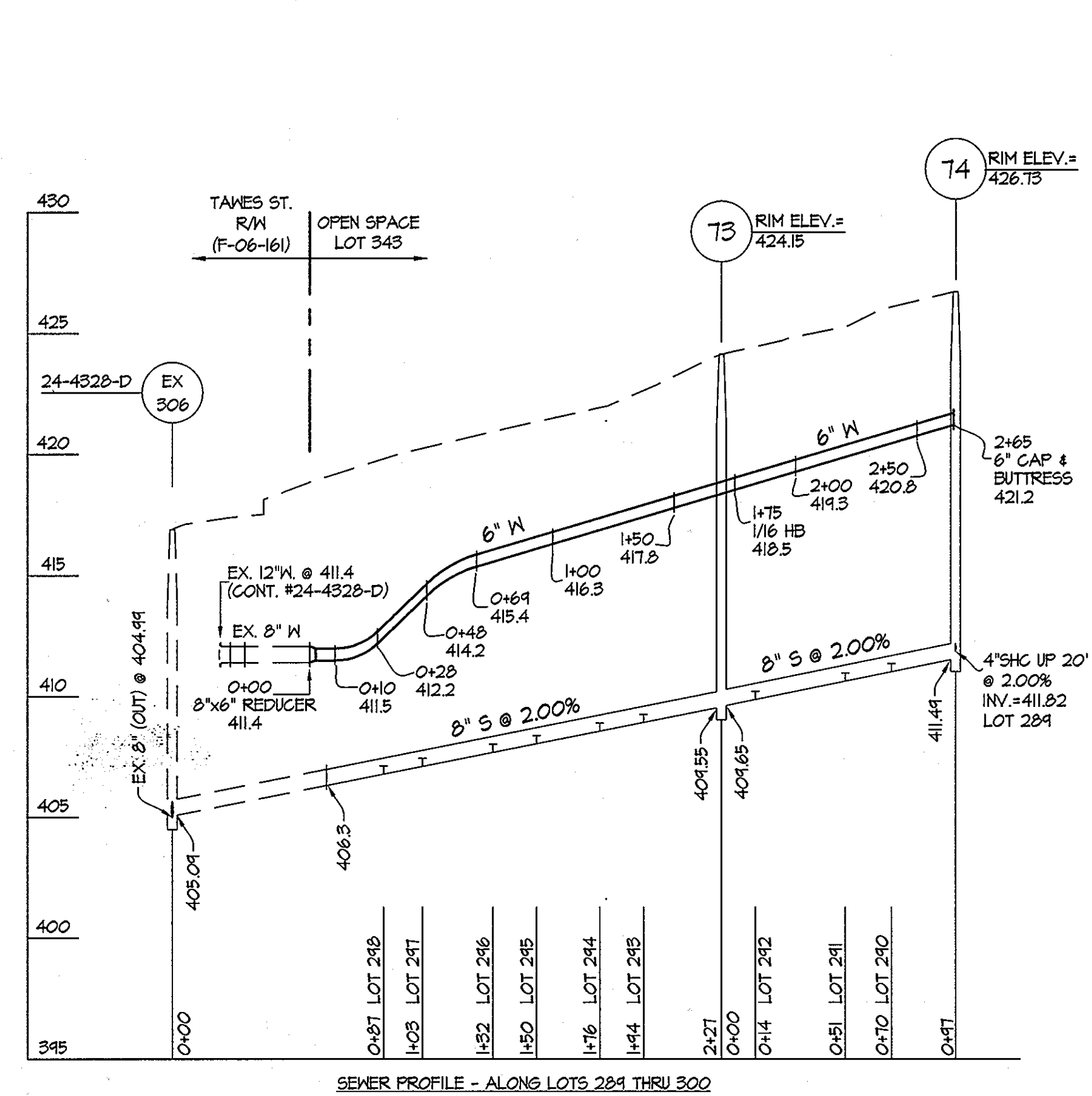
WATER AND SEWER EXTENSION PLAN
 600' SCALE MAP NO. 41/46 BLOCK NO. 22(41)/4(46)

MAPLE LAWN FARMS
 CONTRACT No. 24-4430-D
 HILLSIDE DISTRICT - AREA 4
 LOTS 241 THRU 340, OPEN SPACE LOT 341
 AND COMMON OPEN AREAS 342 THRU 347
 HOWARD COUNTY, MARYLAND
 ELECTION DISTRICT No. 5

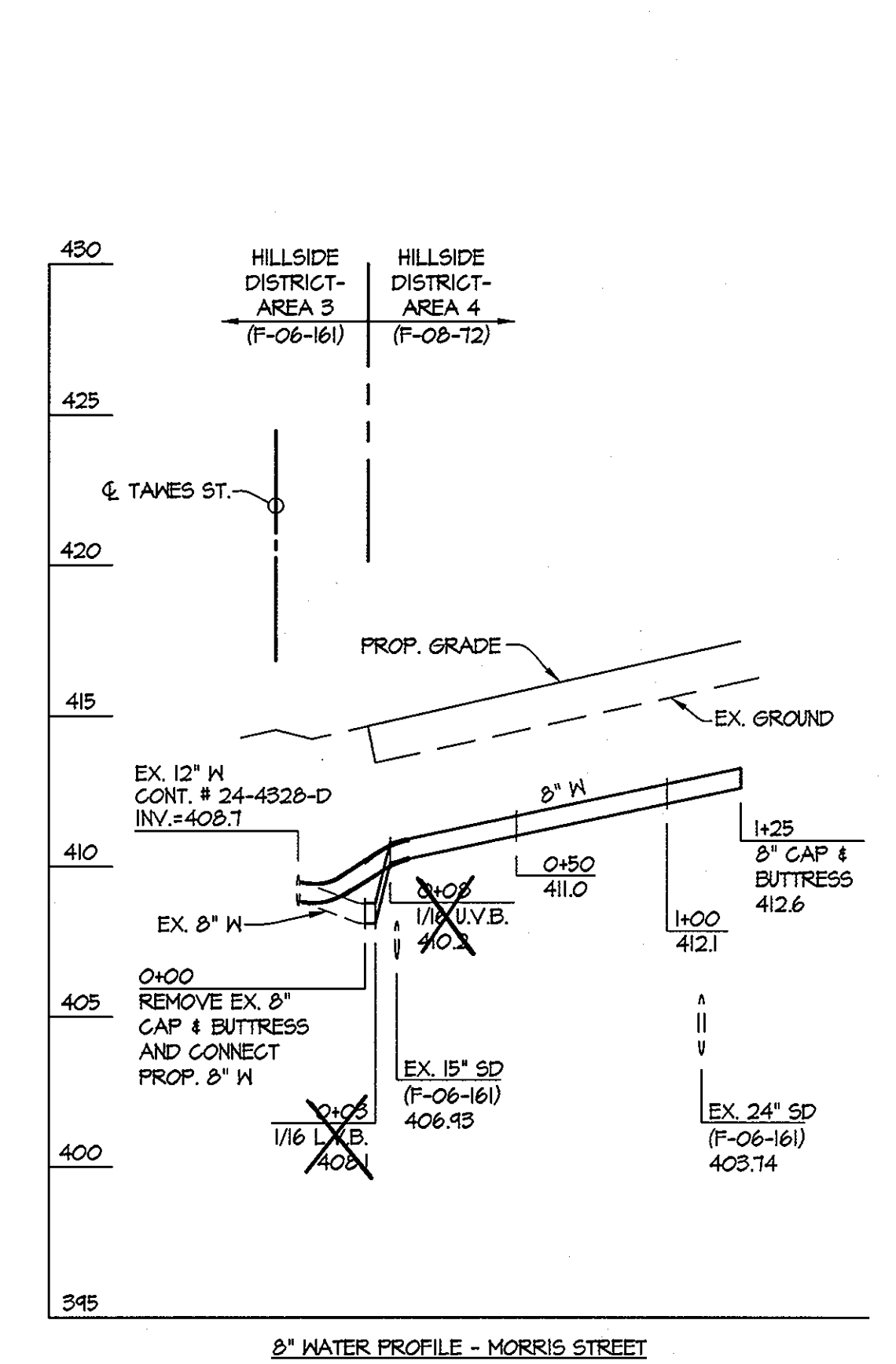
SCALE 1" = 50'
 SHEET 3 OF 6



WATER/SEWER PROFILE - ALONG LONGWOOD STREET AND TAKES STREET

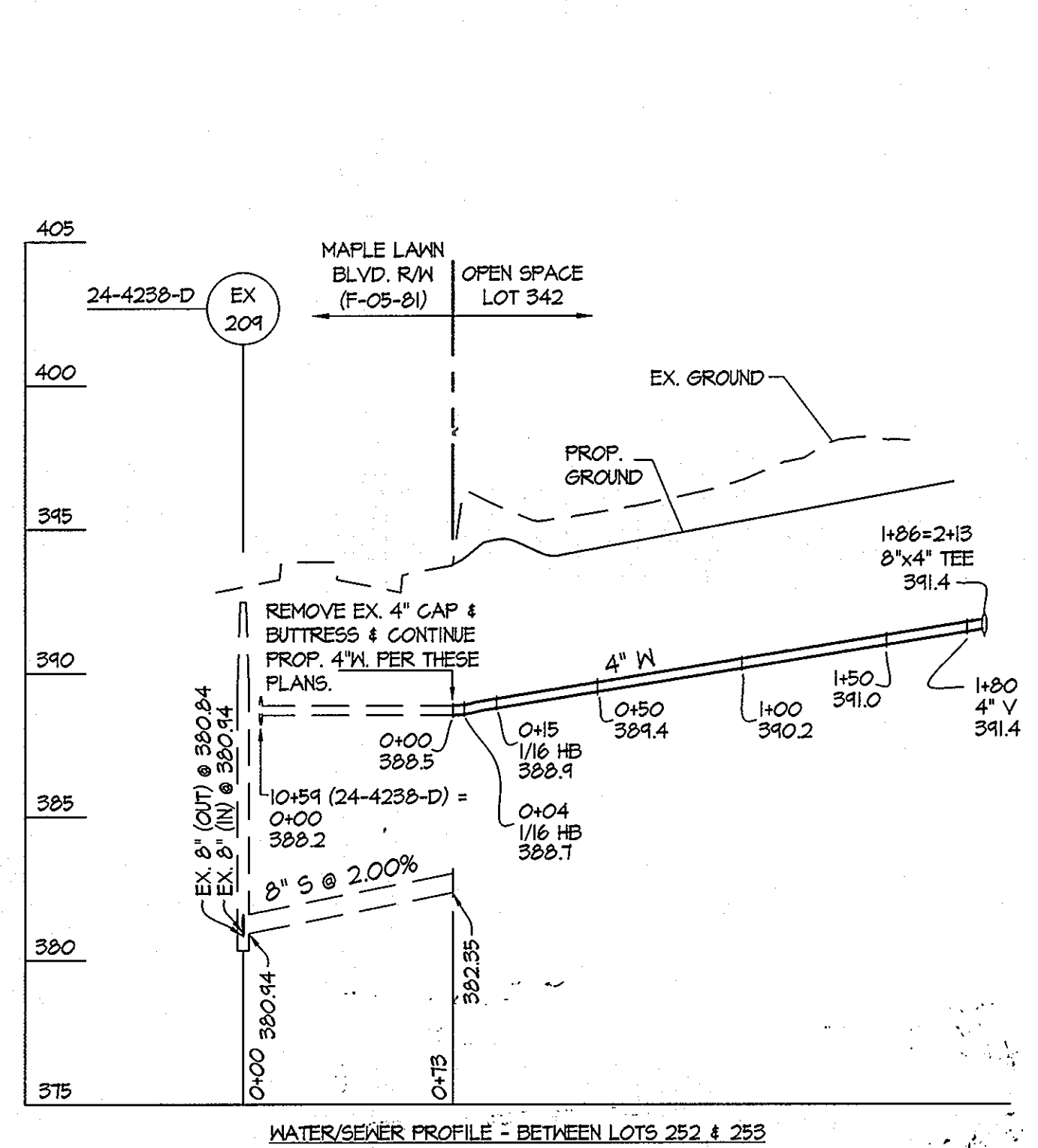


PROFILES SCALE: 1\"/>

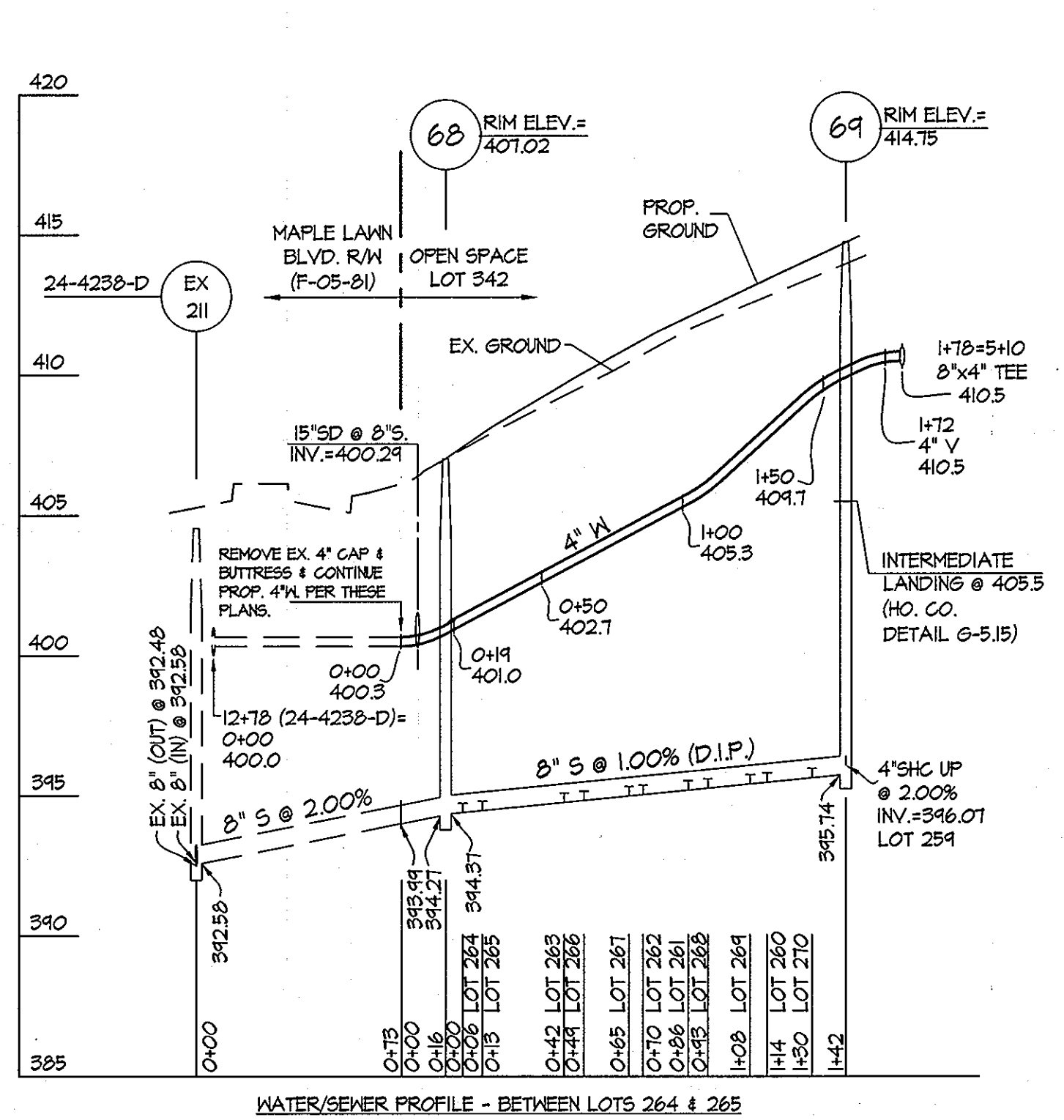


8\"/>

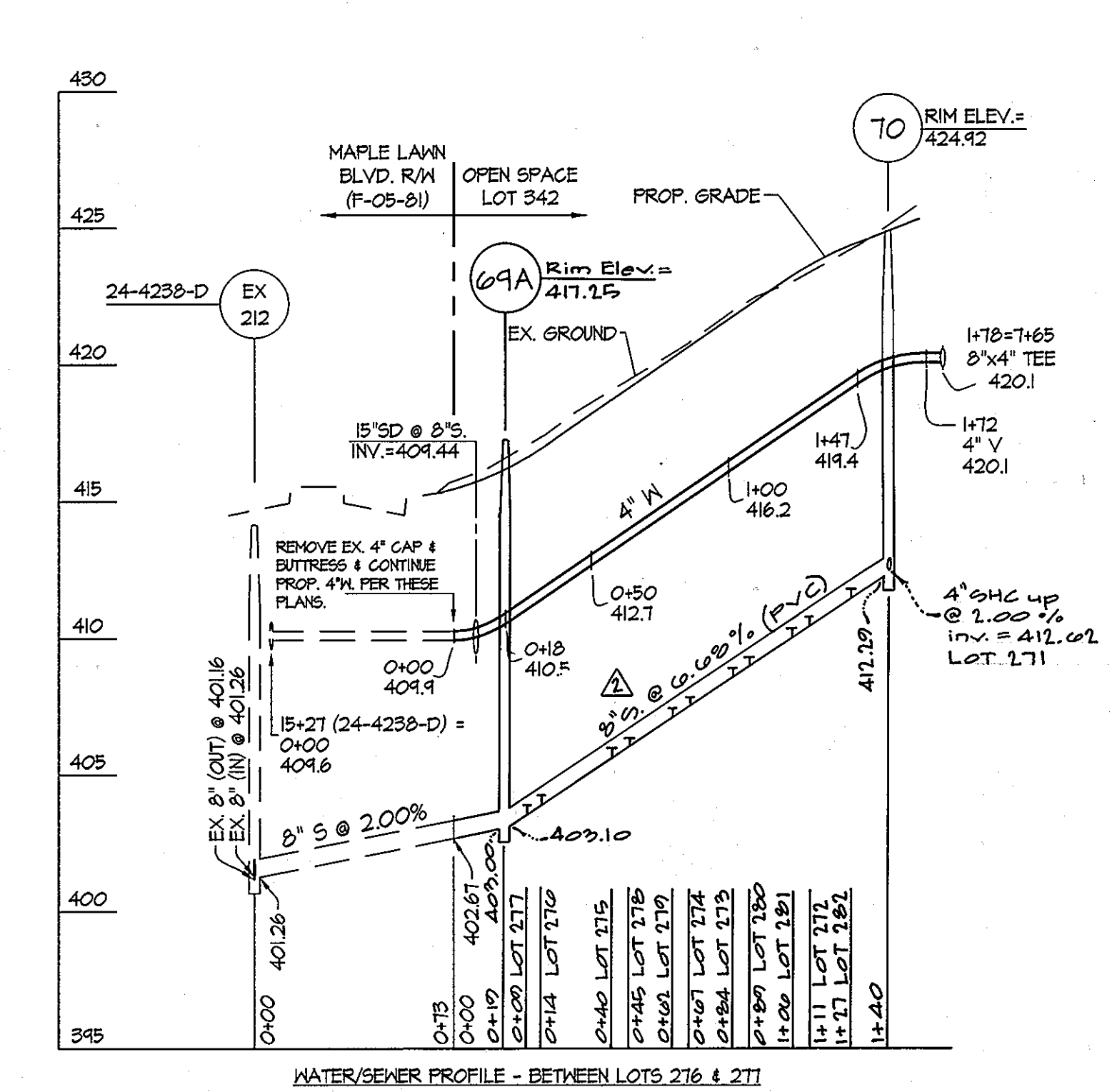
FOR PLAN VIEW, SEE SHEET 3



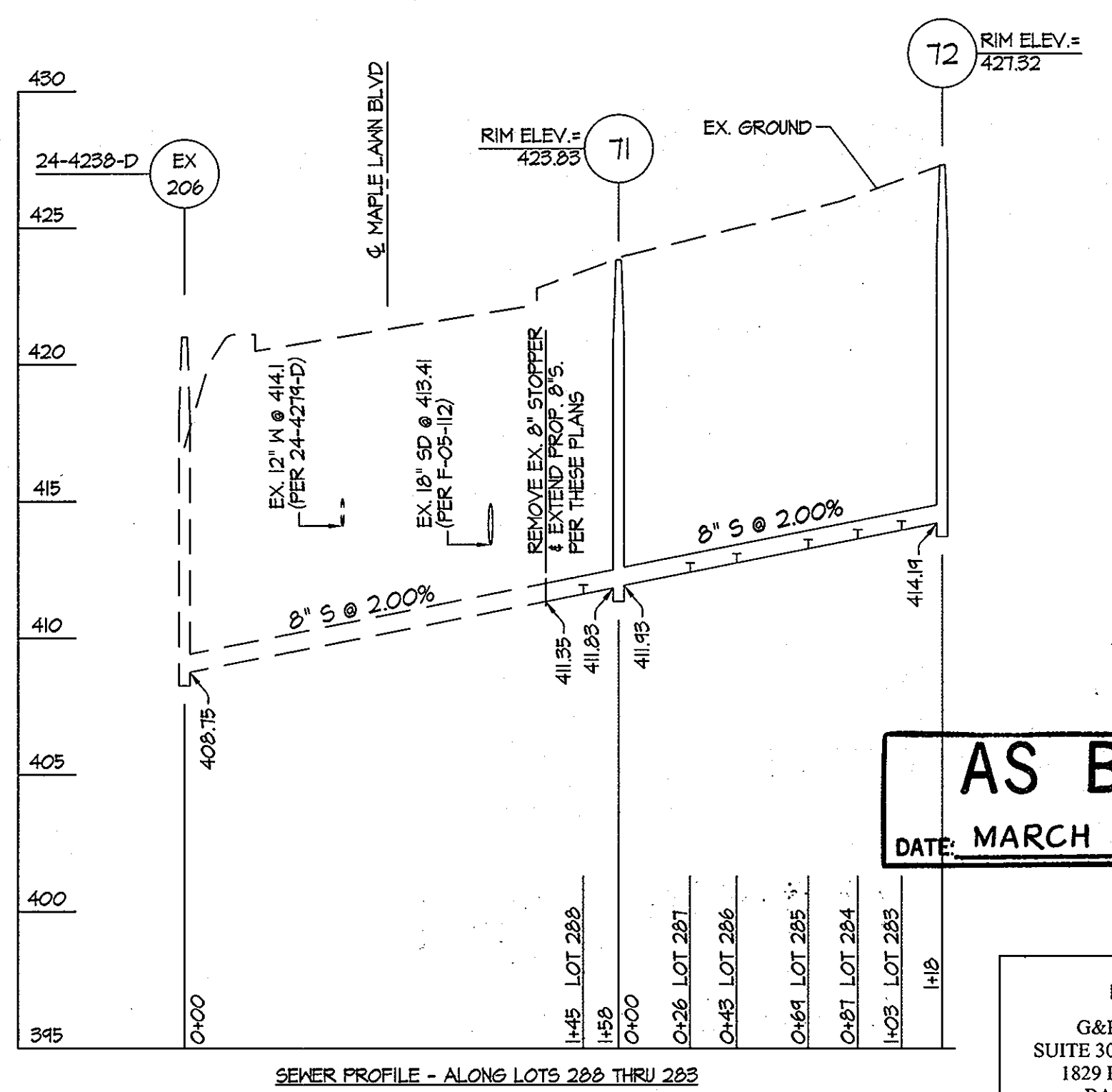
WATER/SEWER PROFILE - BETWEEN LOTS 252 & 253



WATER/SEWER PROFILE - BETWEEN LOTS 264 & 265



WATER/SEWER PROFILE - BETWEEN LOTS 276 & 277



SEWER PROFILE - ALONG LOTS 282 THRU 283

AS BUILT
DATE: MARCH 2010

PREPARED FOR:
G&R MAPLE LAWN, LLC
SUITE 300 WOODHOLME CENTER
1829 REISTERSTOWN ROAD
BALTIMORE, MD 21208
410-484-8400
ATTN: CHARLIE O'DONOVAN

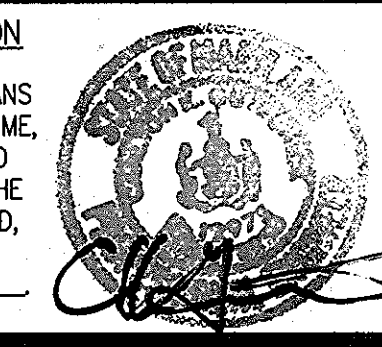
FOR PLAN VIEW, SEE SHEET 2

DEPARTMENT OF PUBLIC WORKS
HOWARD COUNTY, MARYLAND
S. C. CLAW
CHIEF, BUREAU OF UTILITIES

DEPARTMENT OF PLANNING AND ZONING
HOWARD COUNTY, MARYLAND
DATE: 10/10/09
CHIEF, DEVELOPMENT ENGINEERING DIVISION

GLW GUTSCHICK LITTLE & WEBER, P.A.
CIVIL ENGINEERS, LAND SURVEYORS, LAND PLANNERS, LANDSCAPE ARCHITECTS
3909 NATIONAL DRIVE - SUITE 250 - BURTONSVILLE OFFICE PARK
BURTONSVILLE, MARYLAND 20866
TEL: 301-421-4024 BAL: 410-880-1820 DC/VA: 301-989-2524 FAX: 301-421-4186

DATE AUG. 2008
G.L.W. No. 06001
PROFESSIONAL CERTIFICATION
I HEREBY CERTIFY THAT THESE PLANS WERE PREPARED OR APPROVED BY ME, AND THAT I AM A DULY LICENSED PROFESSIONAL ENGINEER UNDER THE LAWS OF THE STATE OF MARYLAND, LICENSE NO. 12375
EXP. DATE: MAY 26, 2010



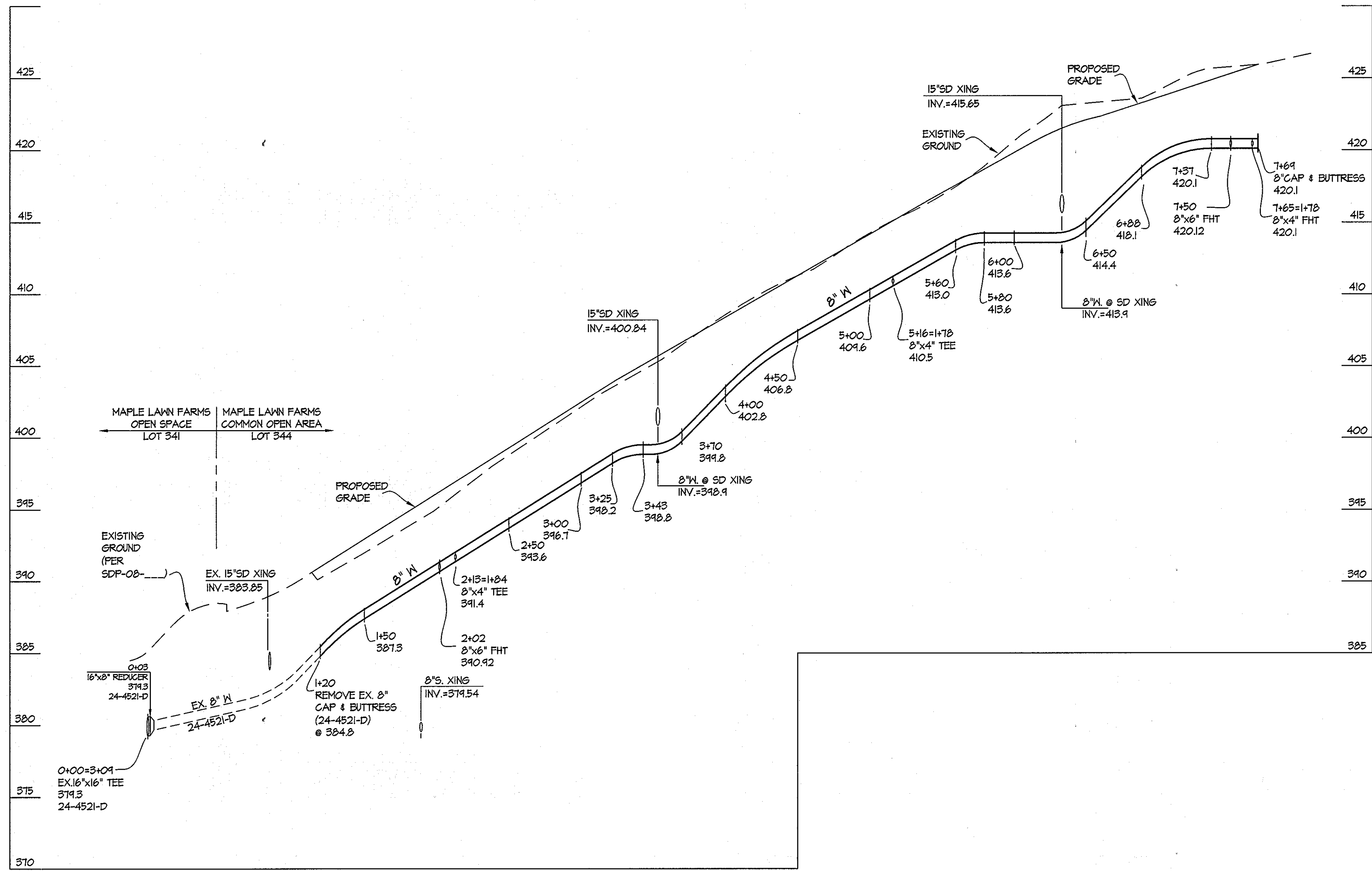
BY	NO	REVISION	DATE
		added MH 69A, relocated SHC for Lot 276 & revised connections	1/25/10
		added SHC's for future Lots F-5 thru F-7	11/20/09

WATER AND SEWER PROFILES
600' SCALE MAP NO. 41/46 BLOCK NO. 22(41)/4(46)

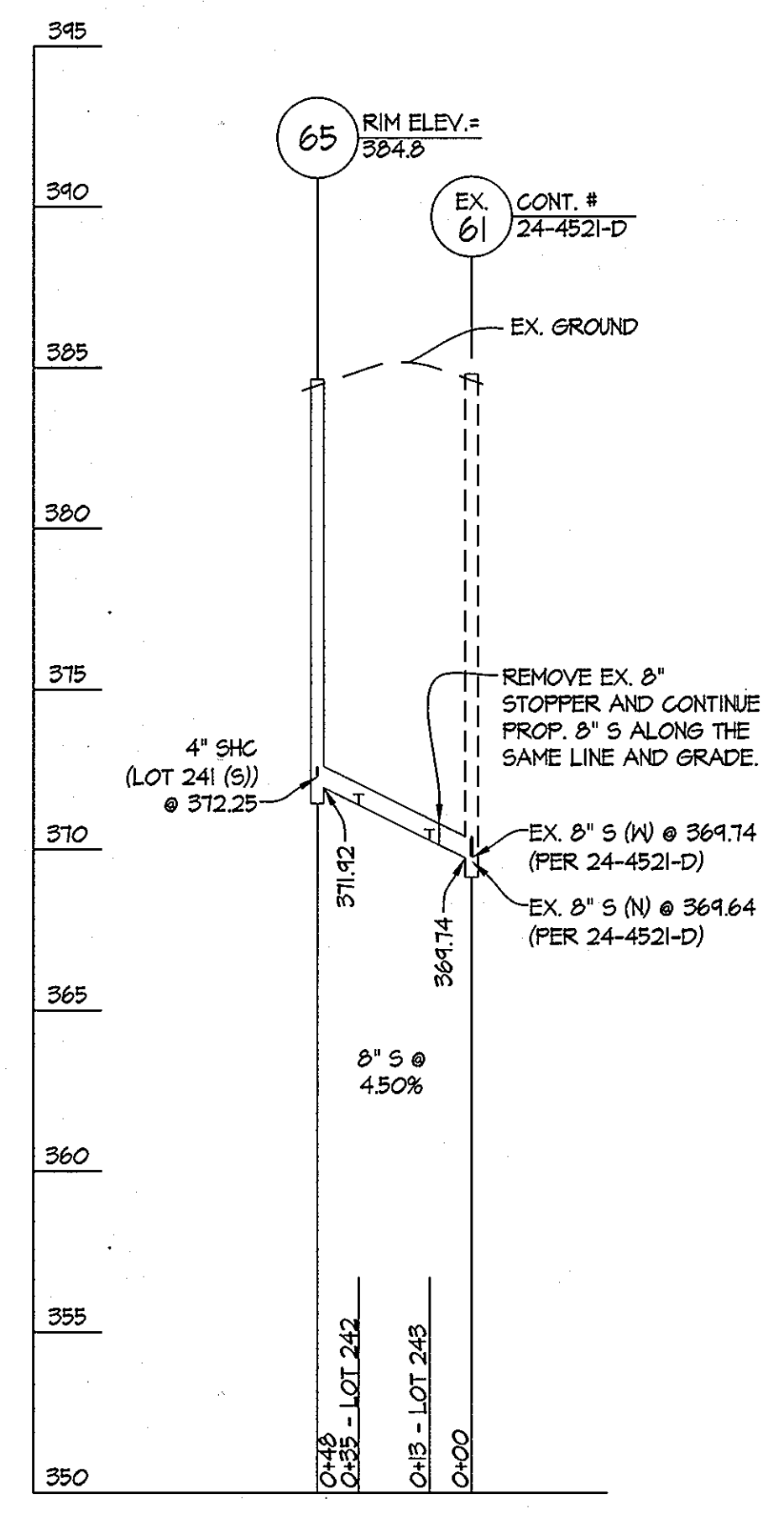
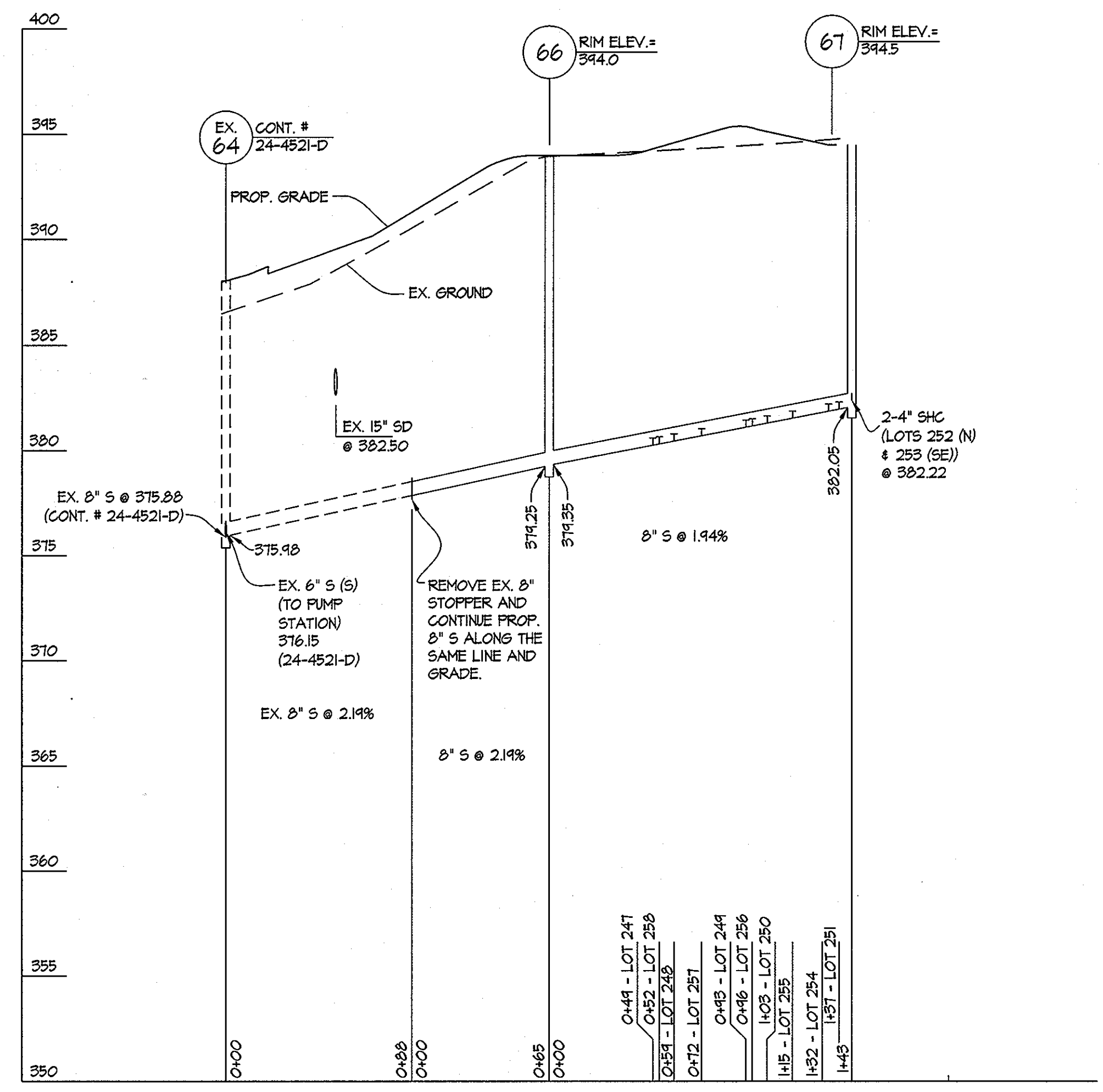
MAPLE LAWN FARMS
CONTRACT No. 24-4430-D
HILLSIDE DISTRICT - AREA 4
LOTS 241 THRU 340, OPEN SPACE LOT 341
AND COMMON OPEN AREAS 342 THRU 347
HOWARD COUNTY, MARYLAND
ELECTION DISTRICT No. 5

SCALE AS SHOWN
SHEET 4 OF 6

L:\CADD\DRAWINGS\04001\06001\MS\06001\MS04-06.dwg 8/29/2008 11:54:34 AM EDT



8" WATER THROUGH COMMON OPEN AREA 344



AS BUILT
DATE: MARCH 2010

FOR PLAN VIEW, SEE SHEET 2

PREPARED FOR:
G&R MAPLE LAWN, LLC
SUITE 300 WOODHOLME CENTER
1829 REISTERSTOWN ROAD
BALTIMORE, MD 21208
410-484-8400
ATTN: CHARLIE O'DONOVAN

L:\CADD\DRAWINGS\04001\06001\WS\06001WS04-06.dwg 8/29/2008 11:54:59 AM EDT

DEPARTMENT OF PUBLIC WORKS HOWARD COUNTY, MARYLAND <i>Steve Chen</i> CHIEF, BUREAU OF UTILITIES	DEPARTMENT OF PLANNING AND ZONING HOWARD COUNTY, MARYLAND <i>[Signature]</i> CHIEF, DEVELOPMENT ENGINEERING DIVISION	GLWGUTSCHICK LITTLE & WEBER, PA. CIVIL ENGINEERS, LAND SURVEYORS, LAND PLANNERS, LANDSCAPE ARCHITECTS 3909 NATIONAL DRIVE - SUITE 250 - BURTONSVILLE OFFICE PARK BURTONSVILLE, MARYLAND 20866 TEL: 301-421-4024 BAL: 410-880-1820 DC/VA: 301-989-2524 FAX: 301-421-4186	DATE AUG., 2008 G.L.W. No. 06001	PROFESSIONAL CERTIFICATION I HEREBY CERTIFY THAT THESE PLANS WERE PREPARED OR APPROVED BY ME, AND THAT I AM A DULY LICENSED PROFESSIONAL ENGINEER UNDER THE LAWS OF THE STATE OF MARYLAND. LICENSE NO. 12975 EXP. DATE: MAY 26, 2010	<table border="1" style="width:100%; border-collapse: collapse;"> <tr> <th>BY</th> <th>NO</th> <th>REVISION</th> <th>DATE</th> </tr> <tr> <td> </td> <td> </td> <td> </td> <td> </td> </tr> </table>	BY	NO	REVISION	DATE					MAPLE LAWN FARMS CONTRACT No. 24-4430-D HILLSIDE DISTRICT - AREA 4 LOTS 241 THRU 340, OPEN SPACE LOT 341 AND COMMON OPEN AREAS 342 THRU 347 HOWARD COUNTY, MARYLAND ELECTION DISTRICT No. 5	SCALE 1"=5' VERT. 1"=50'HORIZ. SHEET 5 OF 6
BY	NO	REVISION	DATE												
WATER AND SEWER PROFILES 600' SCALE MAP NO. 41/46 BLOCK NO. 22(41)/4(46)															

SEWER AS-BUILT INFORMATION

WATER AS-BUILT INFORMATION

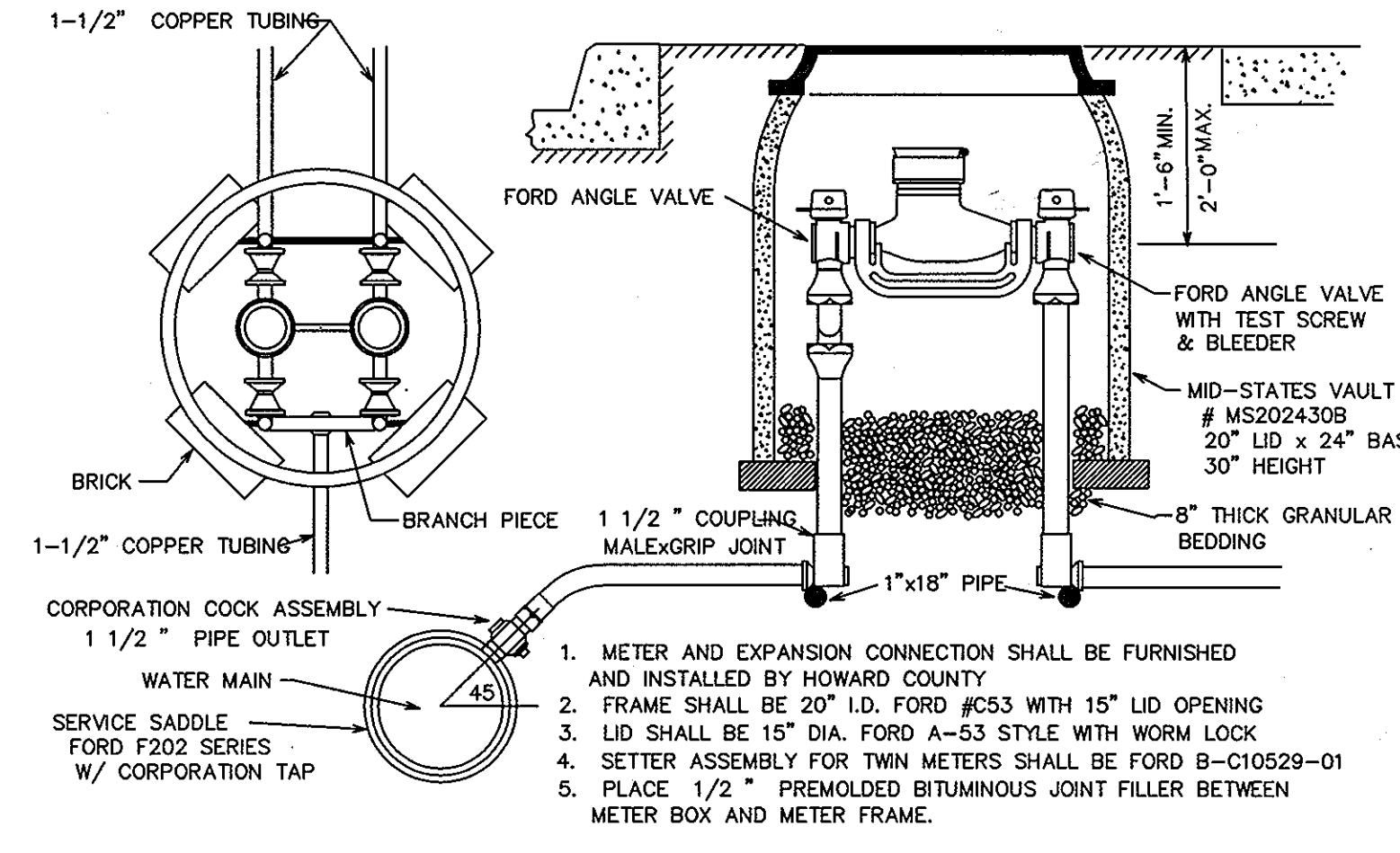
Table with 6 columns: FROM, LENGTH, TO, FROM, LENGTH, TO. It lists sewer lines with their respective lengths and connections between manholes or valves.

Table with 6 columns: FROM, LENGTH, TO, FROM, LENGTH, TO. It lists water lines with their respective lengths and connections between valves or hydrants.

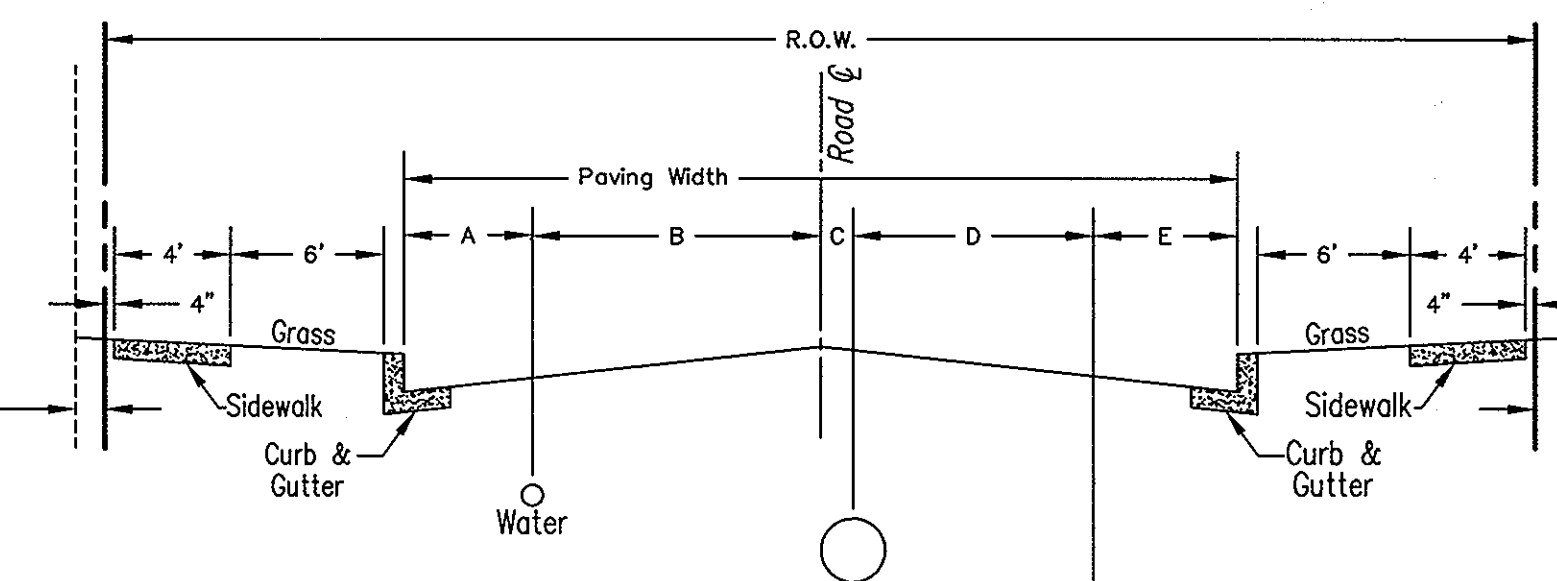
Table with 3 columns: FROM, LENGTH, TO. It lists specific connections between sewer house connections and various manholes or valves.

LEGEND: SHC = SEWER HOUSE CONNECTION, WV = WATER VALVE, WM = WATER METER, SMH = SANITARY MANHOLE, SDM = STORM DRAIN MANHOLE, FH = FIRE HYDRANT

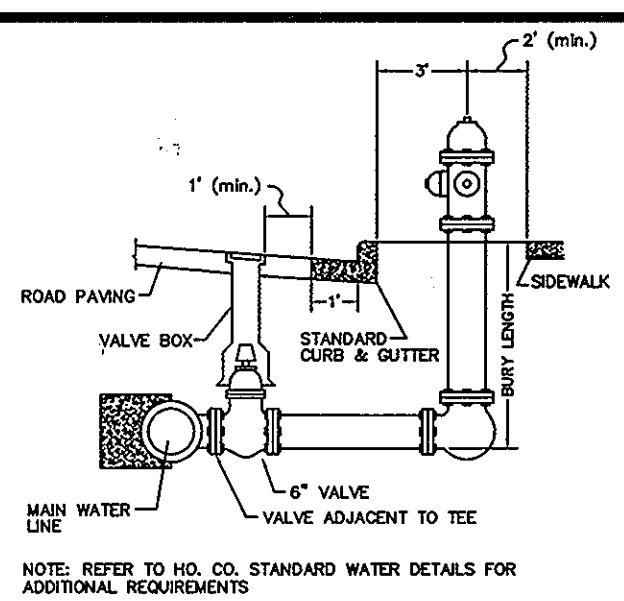
LEGEND: SHC = SEWER HOUSE CONNECTION, WV = WATER VALVE, WM = WATER METER, SMH = SANITARY MANHOLE, SDM = STORM DRAIN MANHOLE, FH = FIRE HYDRANT



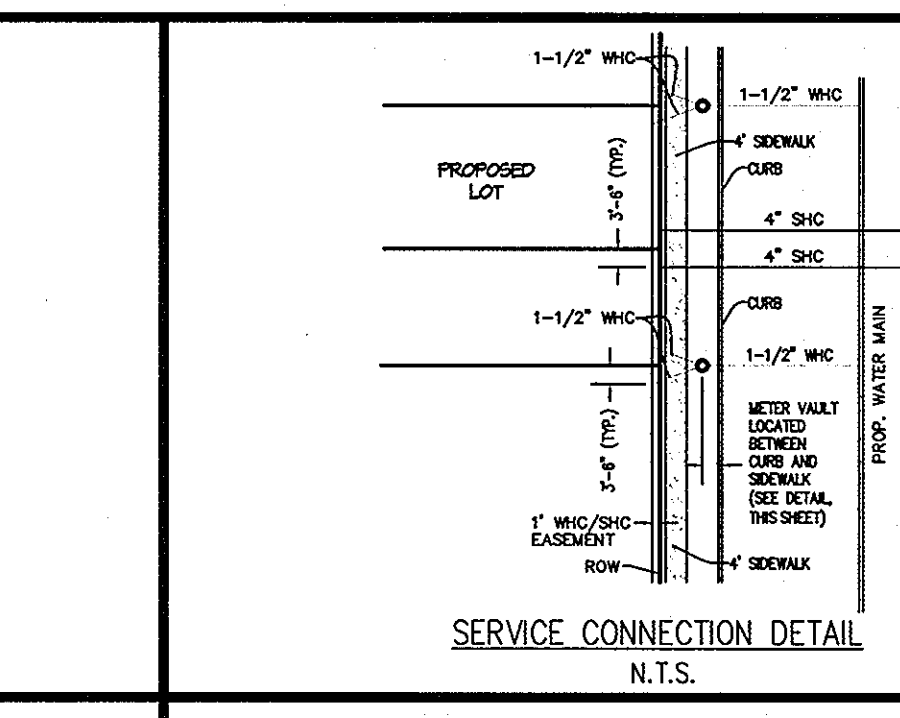
STANDARD INSTALLATION 1 1/2" WATER SUPPLY & TWIN 1" METER SETTING



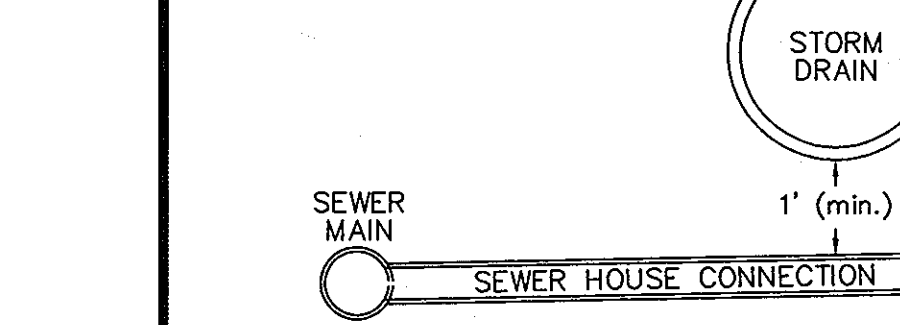
TYPICAL PAVING CROSS-SECTION SCALE: NTS



TYPICAL ON-SITE FIRE HYDRANT SETTING N.T.S.



SERVICE CONNECTION DETAIL N.T.S.



ALL SHC'S SHOWN SERVING NUMBERED LOTS ARE 4" DIAMETER

AS BUILT DATE MARCH 2010

PREPARED FOR: G&R MAPLE LAWN, LLC SUITE 300 WOODHOLME CENTER 1829 REISTERSTOWN ROAD BALTIMORE, MD 21208 410-484-8400 ATTN: CHARLIE O'DONOVAN

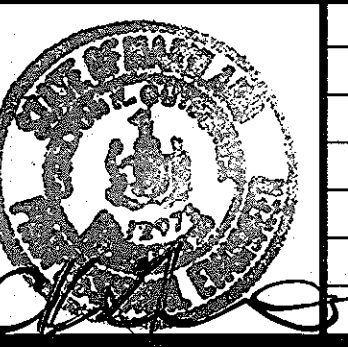
L:\CADD\DRAWINGS\04001\06001\MS\06001\MS04-06.dwg 8/29/2008 11:54:59 AM EDT

DEPARTMENT OF PUBLIC WORKS HOWARD COUNTY, MARYLAND

DEPARTMENT OF PLANNING AND ZONING HOWARD COUNTY, MARYLAND

GLWGUTSCHICK LITTLE & WEBER, P.A. CIVIL ENGINEERS, LAND SURVEYORS, LAND PLANNERS, LANDSCAPE ARCHITECTS

PROFESSIONAL CERTIFICATION I HEREBY CERTIFY THAT THESE PLANS WERE PREPARED OR APPROVED BY ME, AND THAT I AM A DULY LICENSED PROFESSIONAL ENGINEER UNDER THE LAWS OF THE STATE OF MARYLAND.



MAPLE LAWN FARMS CONTRACT NO. 24-4430-D HILLSIDE DISTRICT - AREA 4 LOTS 241 THRU 340, OPEN SPACE LOT 341 AND COMMON OPEN AREAS 342 THRU 347 HOWARD COUNTY, MARYLAND ELECTION DISTRICT No. 5