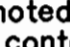


GENERAL NOTES

Part I

- Approximate location of existing mains are shown. The contractor shall take all necessary precautions to protect existing mains and services and maintain uninterrupted service. Any damage incurred shall be repaired immediately to the satisfaction of the Engineer at the Contractor's expense.
- Topographic field surveys were performed on September 2004 by George W. Stephens, Jr. and Assoc.
- Horizontal and vertical survey controls :
The coordinates shown on the drawings are based on Maryland State Reference System NAD 27 as projected by Howard County Geodetic Control Stations No. 234401 and No. 2343001.
All vertical controls are based on NGVD 29. Vertical controls provided on the drawings are (234401) standard concrete monument set flush service. (234301) 3/4" rebar set 0.3" below the surface.
- All pipe elevations shown are invert elevations unless otherwise noted on the plans.
- Clear all utilities by a minimum of 12". Clear all poles by 5'-0" minimum or tunnels as required unless otherwise noted. The owner has contacted the utility companies and has made arrangements for bracing of poles as shown on the drawings. In the event the contractor's work requires the bracing of additional poles, any cost incurred by the owner for bracing of additional poles or damages shall be deducted from monies owed the contractor. The contractor shall coordinate with the utility companies to schedule the bracing of the poles.
- For details not shown on the drawings, and for materials and construction methods, use Howard County Design Manual, Volume IV, Standard Specifications and Detail for Construction (Latest Edition). The contractor shall have a copy of Volume IV on the job.
- Where test pits have been made on existing utilities, they are noted by the symbol  at the location of the test pit. A note or notes containing the results of the test pit or pits is included on the drawings. Existing utilities in the vicinity of the proposed work for which test pits have not been dug shall be located by the contractor two weeks in advance of construction operations at his own expense.
- The contractor shall notify the following utility companies or agencies at least five working days before starting work shown on these plans:

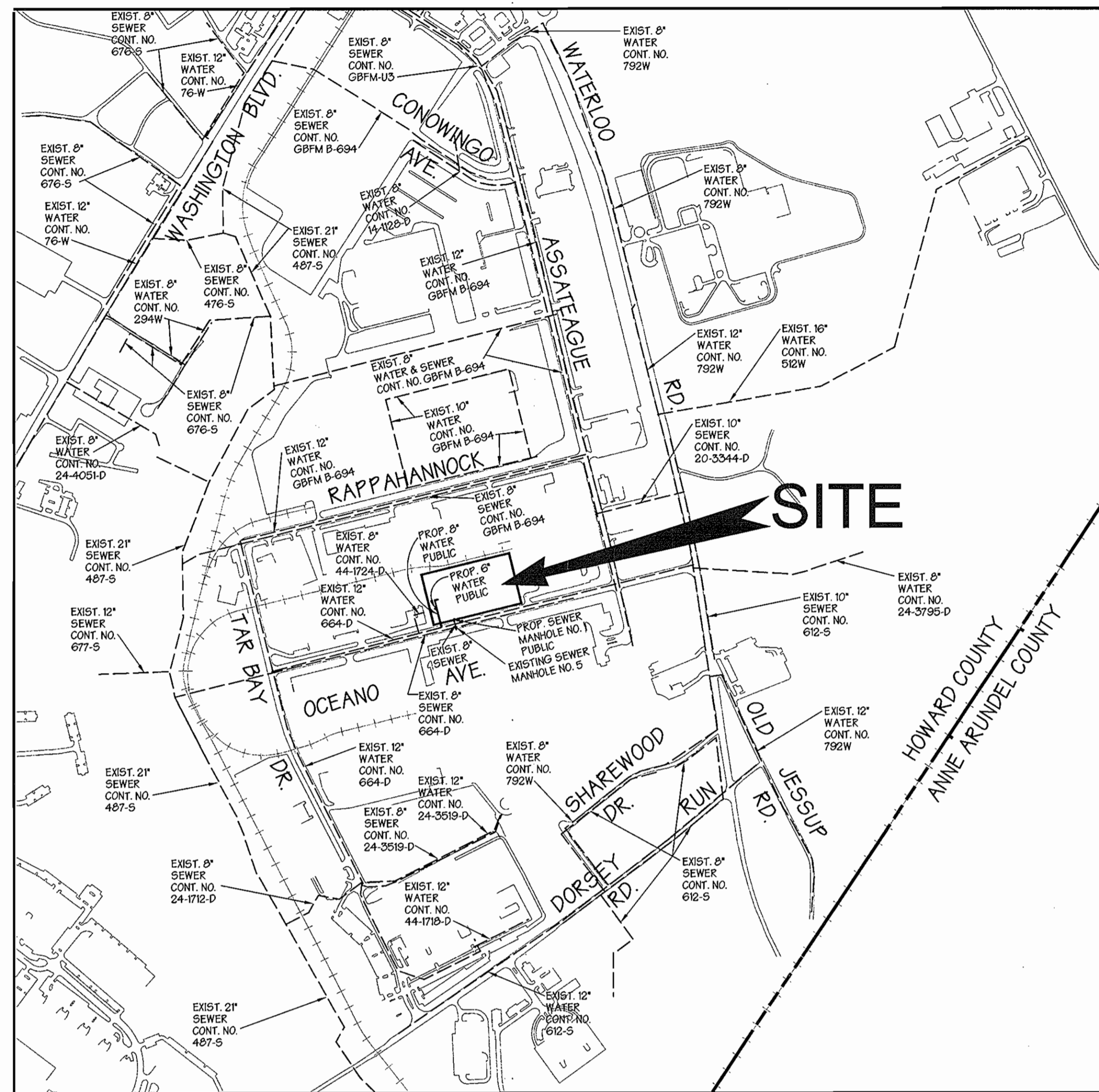
AT&T	1-800-252-1133
BOE (Contractor Services)	410-850-4620
BOE (Emergency)	410-685-1400
Bureau of Utilities	410-313-4900
Colonial Pipeline Co.	410-795-1390
Miss Utility	1-800-257-7777
State Highway Administration	410-531-5535
Verizon	1-800-743-0033 / 410-224-9210
- Trees and shrubs are to be protected from damage to the maximum extent. Trees and shrubs located within the construction strip are not to be removed or damaged by the contractor.
- Contractor shall remove trees, stumps and roots along line of excavation. Payment for such removal shall be included in the unit price bid for construction of the main.
- The contractor shall notify the Bureau of Highways, Howard County, at (410) 313-7450 at least five working days before cutting or boring/jacking of any county road for laying water/sewer mains or house connections. The approval of these drawings will constitute compliance with DPW requirements per Section 18.114(a) of the Howard County Code.

Part II Water

- All water mains shall be D.I.P. Class 52 unless otherwise noted.
- Tops of all water mains to have a minimum of 3'-6" cover unless otherwise noted.
- Valves adjacent to tees shall be strapped to tees.
- All fittings shall be buttressed or anchored with concrete in accordance with the Standard Details unless otherwise provided for on the drawings.
- Fire hydrants shall be set to the bury line elevations shown on the drawings. All fire hydrants shall be installed in accordance with Standard Details. The soil around the fire hydrants shall be compacted in accordance with Section 1000 and Section 1005 of the Standard Specifications.
- The contractor shall not operate any water main valves on the existing water system.

Part III Sewer

- All sewer mains shall be D.I.P. or P.V.C., unless otherwise noted.
- All manholes shall be 4'-0" inside diameter unless otherwise noted.
- Force mains shall be D.I.P. only.
- Manholes shown with 12" and 16" walls are for brick manholes only.
- Manholes designed W.T. in plan and profile shall have watertight frame and cover, Standard Detail G5.52. Where watertight manhole frames and covers are used, set top of frame 1'-6" above finished grade unless otherwise noted on the drawings.
- House(s) with the symbol "C.N.S." indicates that the cellar cannot be served.



LOCATION MAP

SCALE : 1" = 600'

PUBLIC WATER AND SEWER CONSTRUCTION PLANS

MARYLAND WHOLESALE FOOD CENTER

PARCEL C-3, SECTION 2, BLOCK 'A'

6th ELECTION DISTRICT HOWARD COUNTY, MARYLAND
CONTRACT NO. 14-4427-D

INDEX OF SHEETS

SHEET NO.	TITLES
1	COVER SHEET, GENERAL NOTES & LOCATION MAP
2	PLAN VIEW AND PROFILES

BENCH MARKS:

BM # 43HB ELEV. 252.306
SOUTHWEST CORNER OCEANO AVENUE AT
CHESAPEAKE BAY COURT
N543166.776 E1374425.020

BM # GW201 ELEV. 235.67
X-CUT FOUND SOUTHWEST CORNER PARCEL 'A'
N543483.492 E1373721.103

TYPE OF BLDGS :	COMERCIAL
NO. OF PARCELS :	1
NO. OF WATER H.C. :	1
NO. OF SEWER H.C. :	1
DRAINAGE AREA :	SHALLOW RUN
WATER CODE :	A03
SEWER CODE :	215220
TEST GRADIENT ELEV. :	500
TREATMENT PLANT :	PATAPSCO TREATMENT PLANT

QUANTITIES

ITEMS	QUANTITIES ESTIMATED	AS-BUILT		
		QUANTITIES	TYPE	MANUFACTURER/ SUPPLIER
8" D.I.P. Water Main	142 L.F.			
6" D.I.P. Water Main	12 L.F.			
Fire Hydrants	2 Each			
8"X6" TEE	1 Each			
8" Valve and Roadway Box	2 Each			
6" Valve and Roadway Box	1 Each			
8" X 12" TAPPING SLEEVE	1 Each			
PRECAST CONCRETE SEWER MANHOLE PER DETAIL (G 5.12) DROP MH (S1.32)	1 Each			
NAME OF UTILITY CONTRACTOR :				
SURVEY AND DRAFTING DIVISION AS-BUILT DATE _____				

SEDIMENT CONTROL MEASURES FOR THIS CONTRACT WILL BE IMPLEMENTED IN ACCORDANCE WITH SECTION 219 OF THE STANDARD SPECIFICATIONS, SDP 07-027

THE DEVELOPMENT PLAN IS APPROVED FOR SOIL EROSION AND SEDIMENT CONTROL BY THE HOWARD SOIL CONSERVATION DISTRICT.

APPROVED:  5/21/07
HOWARD SOIL CONSERVATION DISTRICT DATE

REVIEWED FOR HOWARD SOIL CONSERVATION DISTRICT AND MEETS TECHNICAL REQUIREMENTS.

 5/21/07
U.S. SOIL CONSERVATION SERVICE DATE

OWNER / DEVELOPER
MARYLAND FOOD CENTER AUTHORITY
7801 OCEANO AVENUE
JESSUP, MARYLAND 20794
410-379-5760

DEPARTMENT OF PUBLIC WORKS
HOWARD COUNTY, MARYLAND

DEPARTMENT OF PLANNING & ZONING
HOWARD COUNTY, MARYLAND



GEORGE W. STEPHENS, JR. AND ASSOCIATES, INC.
Civil Engineers and Land Surveyors
215 SCHILLING CIRCLE, SUITE 114
HUNT VALLEY, MARYLAND 21031
(410) 785-6640



DESIGNED : KE, BE
DRAFTED : KE, BE
CHECKED : KE

COVER SHEET, GENERAL NOTES & LOCATION MAP

CONTRACT NO. 14-4427-D
600 SCALE MAP NO. 4.3

BLOCK NO. 21

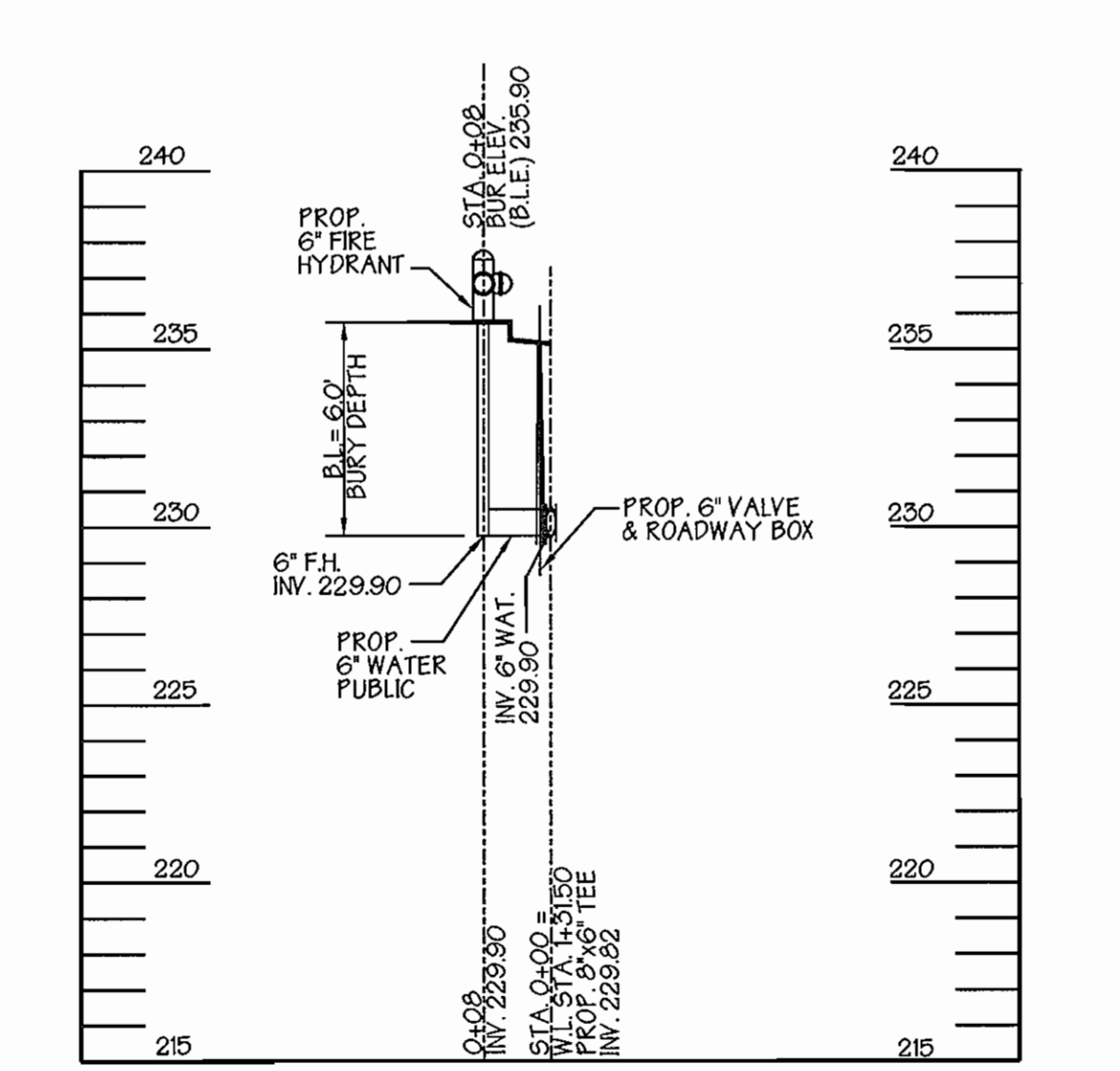
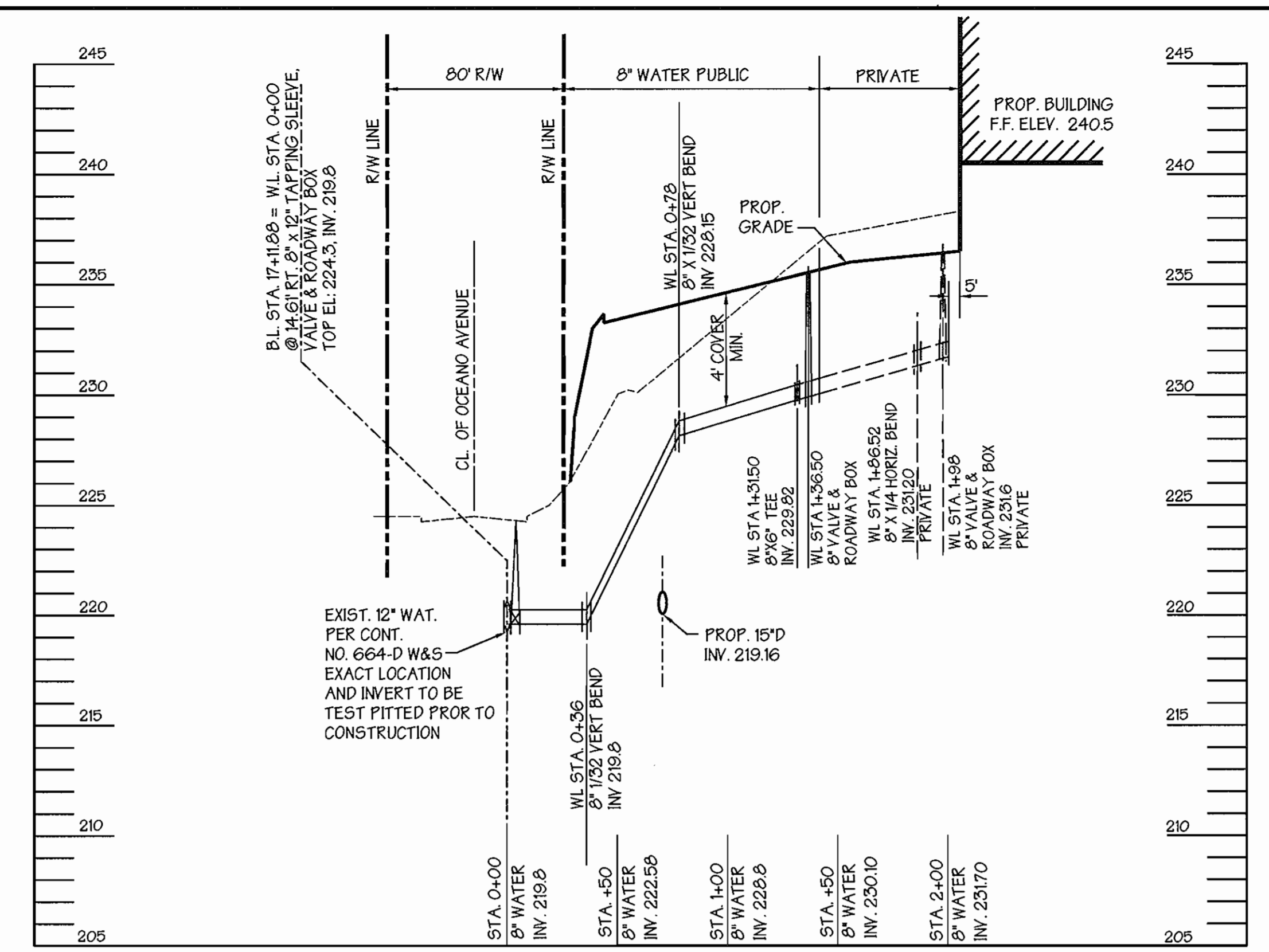
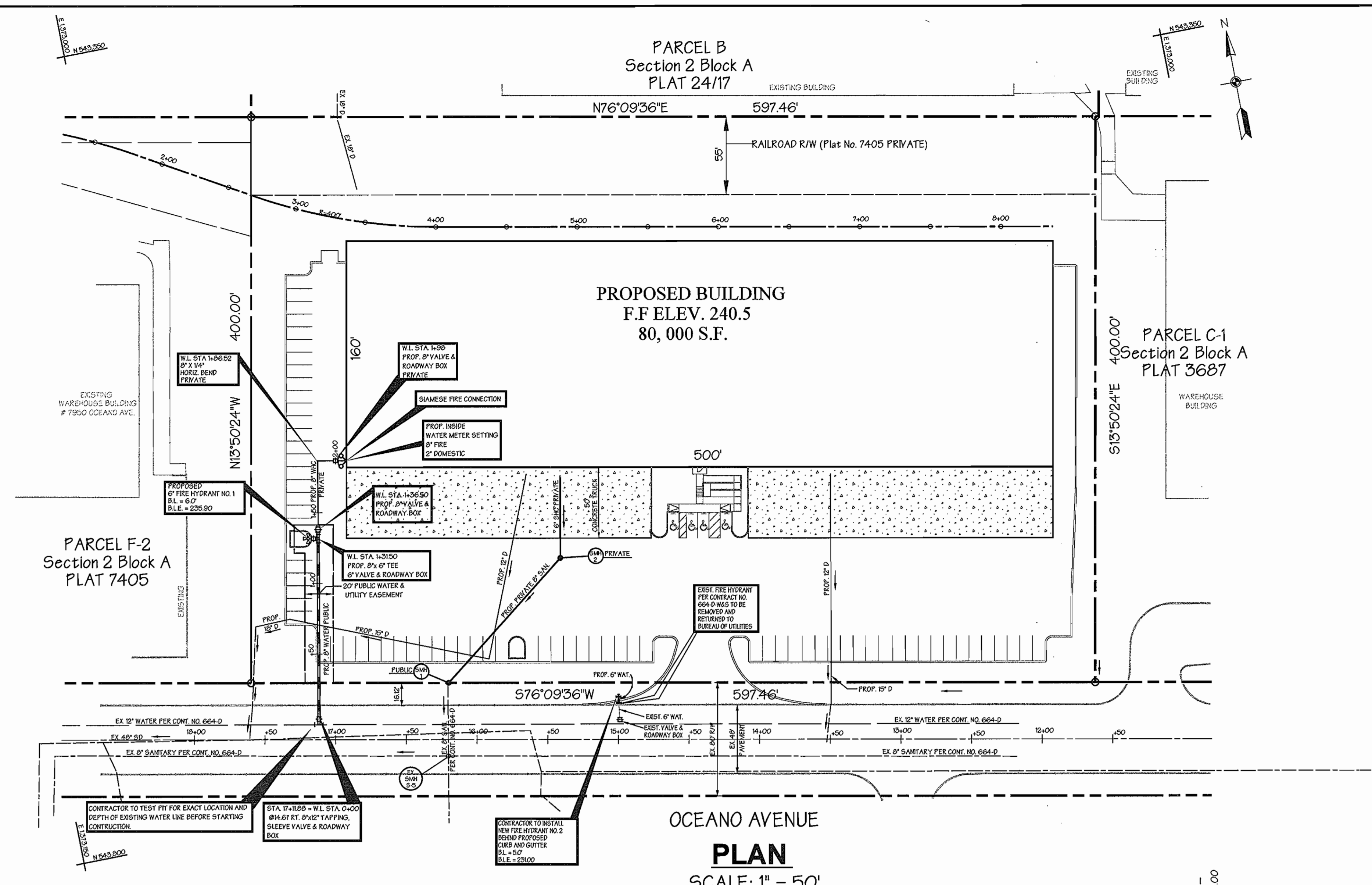
PUBLIC WATER AND SEWER MARYLAND WHOLESALE FOOD CENTER PARCEL C-3, SECTIONS 2, BLOCK 'A'

CONTRACT NO. 14-4427-D

HOWARD COUNTY, MARYLAND
ELECTION DISTRICT *06

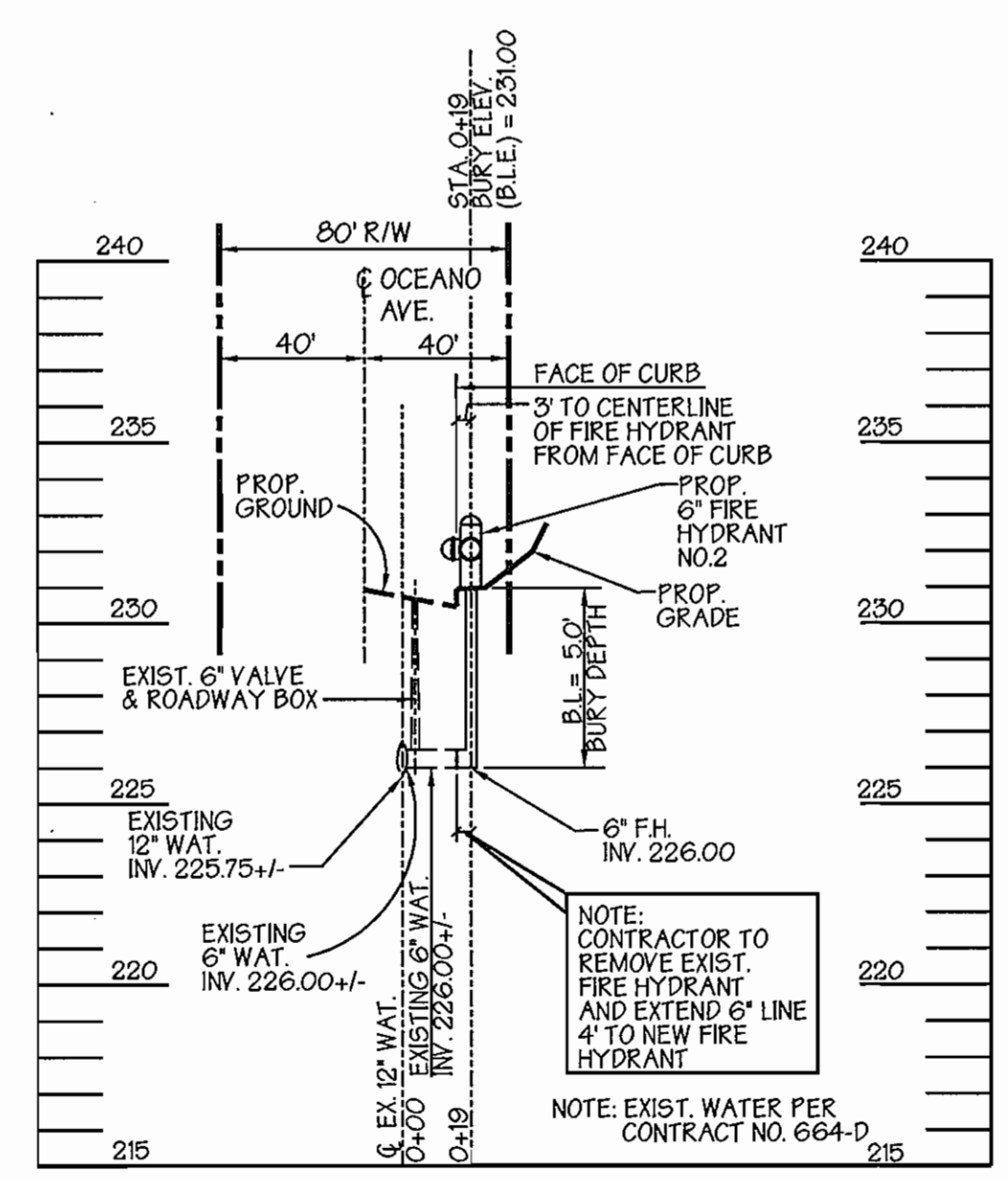
AUGUST 30, 2006
SHEET 1 OF 2

P/N 10696- watertitle.s01



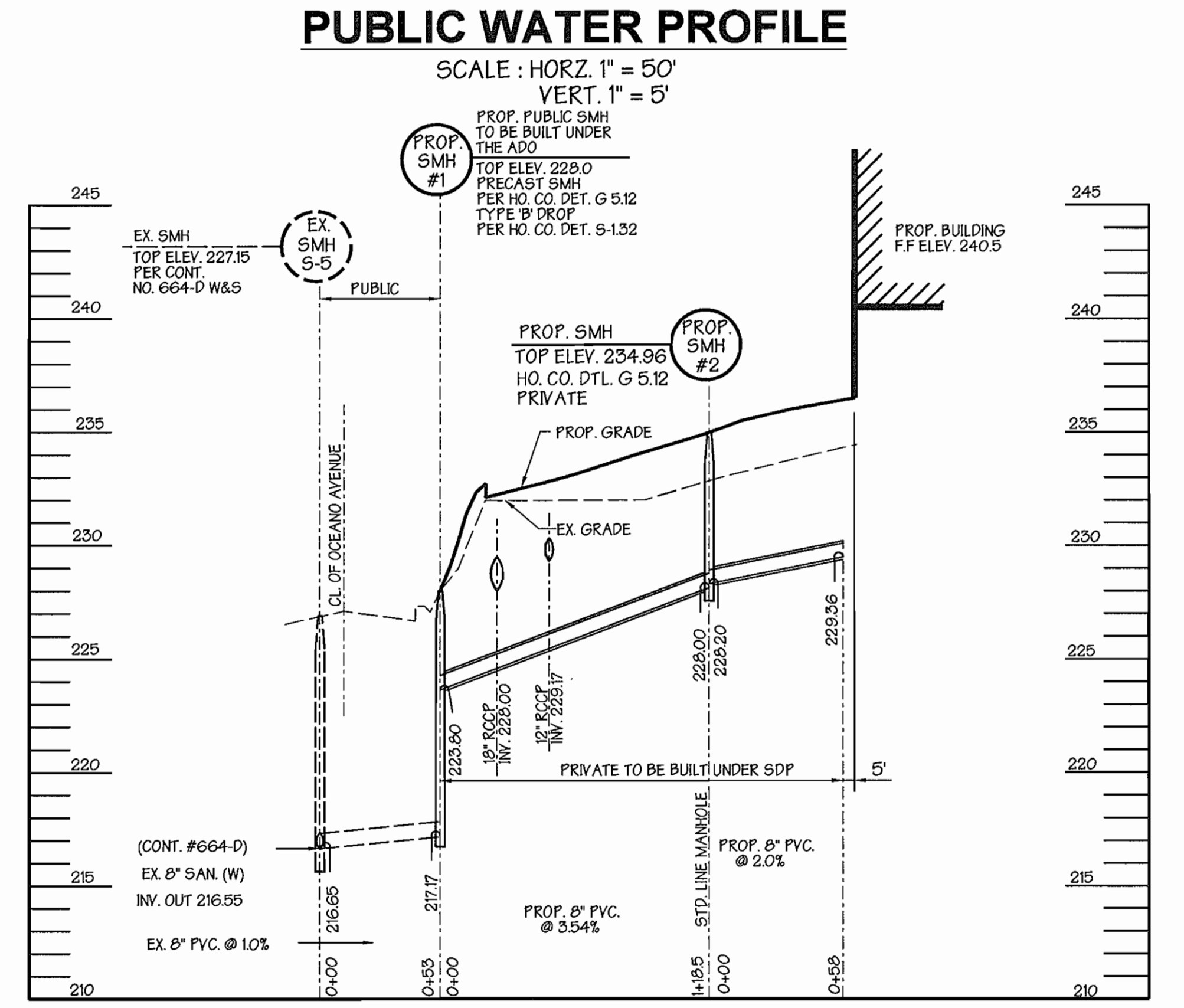
PUBLIC 6" FIRE HYDRANT NO. 1

SCALE: HORZ. 1" = 50'
VERT. 1" = 5'



PUBLIC 6" FIRE HYDRANT NO. 2

SCALE: HORZ. 1" = 50'
VERT. 1" = 5'



PUBLIC SEWER PROFILE

SCALE: HORZ. 1" = 50'
VERT. 1" = 5'

OWNER / DEVELOPER
MARYLAND FOOD CENTER AUTHORITY
7801 OCEANO AVENUE
JESSUP, MARYLAND 20794
410-379-5760

DEPARTMENT OF PUBLIC WORKS
HOWARD COUNTY, MARYLAND
[Signature]
DATE

DEPARTMENT OF PLANNING & ZONING
HOWARD COUNTY, MARYLAND
[Signature]
DATE

GEORGE W. STEPHENS, JR. AND ASSOCIATES, INC.
Civil Engineers and Land Surveyors
215 SCHILLING CIRCLE, SUITE 114
HUNT VALLEY, MARYLAND 21031
(410) 785-6640



DESIGNED: KE, BE
DRAFTED: KE, BE
CHECKED: KE

PLAN AND PROFILE SHEET
CONTRACT NO. 14-4427-D
600 SCALE MAP NO. 4.3
BLOCK NO. 21

PUBLIC WATER AND SEWER
MARYLAND WHOLESALE FOOD CENTER
PARCEL C-3, SECTION 2, BLOCK 'A'
CONTRACT NO. 14-4427-D
HOWARD COUNTY, MARYLAND
ELECTION DISTRICT *06
AUGUST 25, 2006
SHEET 2 OF 2