

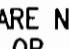
FINAL WATER PLAN

CARMAX # 7663 AUTO DEALERSHIP HOENES PROPERTY PARCEL 'H'

CONTRACT 24-4426-D

GENERAL NOTES

PART I

- APPROXIMATE LOCATION OF EXISTING MAINS ARE SHOWN. THE CONTRACTOR SHALL TAKE ALL NECESSARY PRECAUTIONS TO PROTECT EXISTING MAINS AND SERVICES AND MAINTAIN UNINTERRUPTED SERVICE. ANY DAMAGE INCURRED SHALL BE REPAIRED IMMEDIATELY TO THE SATISFACTION OF THE ENGINEER AT THE CONTRACTOR'S EXPENSE.
- THE TOPOGRAPHY SHOWN HEREON IS BASED ON AN AERIAL SURVEY BY VRM DATED AUGUST 2004.
- HORIZONTAL AND VERTICAL SURVEY CONTROLS:
THE COORDINATES SHOWN ON THE DRAWINGS ARE BASED ON MARYLAND STATE REFERENCE SYSTEM NAD '83/91 AS PROJECTED BY HOWARD COUNTY GEODETIC CONTROL STATIONS 24C2 AND 18C1.
ALL VERTICAL CONTROLS ARE BASED ON (NAVD' 27). VERTICAL CONTROLS PROVIDED ON DRAWINGS ARE:
GEODETIC SURVEY CONTROL 24C2 (N 588648.324/E 1366038.160)
BRASS DISC SET ON TOP OF A CONCRETE MONUMENT, LOCATED AT 6' FROM P.C. EDGE MACADAM IN RT-40 EAST OF RT-29, AND 80.4' E. OF STORM DRAINAGE, 7.7' W. OF GAS COVERS ALONG RT-40.
GEODETIC SURVEY CONTROL 18C1 (N 589984.958/E 136750.246)
BRASS DISC SET ON TOP OF A CONCRETE MONUMENT, LOCATED AT TRAFFIC CIRCLE RT-103 NORTH OF RT-100, AND 17.3' NORTH OF MH AND 5.6' WEST OF GUARDRAIL ALONG RT-104.
- ALL PIPE ELEVATIONS SHOWN ARE INVERT ELEVATIONS UNLESS OTHERWISE NOTED.
- CLEAR ALL UTILITIES BY A MINIMUM OF 12 INCHES. CLEAR ALL POLES BY 5'-0" MINIMUM OR TUNNEL AS REQUIRED UNLESS OTHERWISE NOTED. THE OWNER HAS CONTACTED THE UTILITY COMPANIES AND HAS MADE ARRANGEMENTS FOR BRACING OF POLES AS SHOWN ON DRAWINGS. IN THE EVENT THE CONTRACTOR'S WORK REQUIRES THE BRACING OF ADDITIONAL POLES, ANY COST INCURRED BY THE OWNER FOR BRACING OF ADDITIONAL POLES OR DAMAGES SHALL BE DEDUCTED FROM MONIES OWED THE CONTRACTOR. THE CONTRACTOR SHALL COORDINATE WITH THE UTILITY COMPANIES TO SCHEDULE THE BRACING OF THE POLES.
- FOR DETAILS NOT SHOWN ON THE DRAWINGS, AND FOR MATERIALS AND CONSTRUCTION METHODS USE, HOWARD COUNTY DESIGN MANUAL, VOLUME IV, STANDARD SPECIFICATIONS AND DETAILS FOR CONSTRUCTION (LATEST EDITION). THE CONTRACTOR SHALL HAVE A COPY OF VOLUME IV ON THE JOB.
- WHERE TEST PITS HAVE BEEN MADE ON EXISTING UTILITIES, THEY ARE NOTED BY THE SYMBOL  AT THE LOCATION OF THE TEST PIT. A NOTES OR NOTES CONTAINING THE RESULTS OF THE TEST PIT OR PITS IS INCLUDED ON THE DRAWINGS. EXISTING UTILITIES IN THE VICINITY OF THE PROPOSED WORK FOR WHICH TEST PITS HAVE NOT BEEN DUG SHALL BE LOCATED BY THE CONTRACTOR TWO WEEKS IN ADVANCE OF CONSTRUCTION OPERATION AT HIS OWN EXPENSE.
- THE CONTRACTOR SHALL NOTIFY THE FOLLOWING UTILITY COMPANIES OR AGENCIES AT LEAST FIVE WORKING DAYS BEFORE STARTING WORK SHOWN THESE PLANS:
AT & T 1-800-252-1133
BGE (CONTRACTOR SERVICE) 410-850-4620
BGE (EMERGENCY) 410-685-1400
BUREAU OF UTILITIES 410-313-4900
COLONIAL PIPELINE CO. 410-795-1390
MISS UTILITY 1-800-257-7777
STATE HIGHWAY ADMINISTRATION 410-531-5533
VERIZON 1-800-743-0033/410-224-9210
- TREES AND SHRUBS ARE TO BE PROTECTED FROM DAMAGE TO THE MAXIMUM EXTENT. TREES AND SHRUBS LOCATED WITHIN THE CONSTRUCTION STRIP ARE NOT TO BE REMOVED OR DAMAGED BY THE CONTRACTOR
- THE CONTRACTOR SHALL REMOVE TREES, STUMPS AND ROOTS ALONG THE LINE OF EXCAVATION. PAYMENT FOR SUCH REMOVAL SHALL BE INCLUDED IN THE UNIT PRICE BID FOR THE CONSTRUCTION OF THE MAIN.
- THE CONTRACTOR SHALL NOTIFY THE BUREAU OF HIGHWAYS, HOWARD COUNTY, AT (410) 313-7450 AT LEAST FIVE WORKING DAYS BEFORE ANY OPEN CUTTING OR BORING/JACKING OF ANY COUNTY ROAD FOR LAYING WATER/SEWER MAINS OR HOUSE CONNECTIONS. THE APPROVAL OF THESE DRAWINGS WILL CONSTITUTE COMPLIANCE WITH DPW REQUIREMENTS PER SECTION 18.114(c) OF THE HOWARD COUNTY CODE.

PART II - WATER

- ALL WATER MAINS TO BE D.I.P. CLASS 52 UNLESS OTHERWISE NOTED.
- TOPS OF ALL WATER MAINS TO HAVE A MINIMUM OF 3'-6" COVER UNLESS OTHERWISE NOTED.
- VALVES ADJACENT TO TEES SHALL BE STRAPPED TO TEES.
- ALL FITTINGS SHALL BE BUTTRESSED OR ANCHORED WITH CONCRETE IN ACCORDANCE WITH THE STANDARD DETAILS UNLESS OTHERWISE PROVIDED FOR ON THE DRAWINGS.
- FIRE HYDRANTS SHALL BE SET TO THE BURY LINE ELEVATIONS SHOWN ON THE DRAWINGS. ALL FIRE HYDRANTS SHALL BE INSTALLED IN ACCORDANCE WITH STANDARD DETAILS. THE SOIL AROUND THE FIRE HYDRANT SHALL BE COMPACTED IN ACCORDANCE WITH SECTION 1000 AND 1005 OF THE STANDARD SPECIFICATIONS.
- THE CONTRACTOR SHALL NOT OPERATE ANY WATER MAIN VALVES ON THE EXISTING WATER SYSTEM.

PART III - SEWER

- ALL SEWER MAINS SHALL BE D.I.P. OR P.V.C UNLESS OTHERWISE NOTED.
- ALL MANHOLES SHALL BE 4'-0" INSIDE DIAMETER UNLESS OTHERWISE NOTED.
- FORCE MAINS SHALL BE D.I.P. ONLY.
- MANHOLES SHOWN WITH 12" AND 16" WALLS ARE FOR BRICK MANHOLES ONLY.
- MANHOLES DESIGNATED W.T. IN PLAN AND PROFILE SHALL HAVE WATERTIGHT FRAME AND COVER, STANDARD DETAIL G5.52. WHERE WATERTIGHT MANHOLE FRAME AND COVERS ARE USED, SET TOP OF FRAME 1'-6" ABOVE FINISHED GRADE UNLESS OTHERWISE NOTED ON THE DRAWINGS.
- HOUSE(S) WITH THE SYMBOL "C.N.S." INDICATES THAT CELLAR CANNOT BE SERVED.

SEDIMENT CONTROL MEASURES WILL BE IMPLEMENTED IN ACCORDANCE WITH SECTION 219 OF THE SPECIFICATIONS AND WITH SITE DEVELOPMENT PLAN SDP-06-140.

THIS DEVELOPMENT IS APPROVED FOR SOIL EROSION AND SEDIMENT CONTROL BY THE HOWARD COUNTY SOIL CONSERVATION DISTRICT.

REVIEWED FOR HOWARD COUNTY SOIL CONSERVATION DISTRICT AND MEETS TECHNICAL REQUIREMENTS.

John R. Robertson
SOIL CONSERVATION DISTRICT

2/6/07
DATE

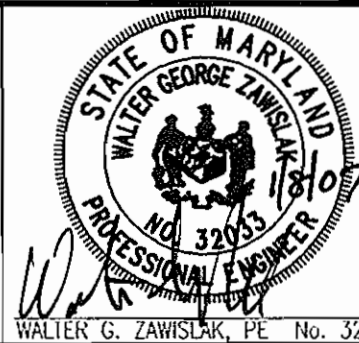
Jim Meyer
U.S. SOIL CONSERVATION DISTRICT

2/6/07
DATE

DEPARTMENT OF PUBLIC WORKS
HOWARD COUNTY, MARYLAND

DEPARTMENT OF PLANNING & ZONING
HOWARD COUNTY, MARYLAND

ROBERT H. VOGEL
ENGINEERING, INC.
ENGINEERS • SURVEYORS • PLANNERS
8407 MAIN STREET TEL: 410.461.7666
ELLCOTT CITY, MD 21043 FAX: 410.461.8961



DES:	DZ				
DRN:	DZ				
CHK:	WGZ	RAY	2	ADD 2" WMC & 2" METER	04/03/08
		KCI	1	AS-BUILT DATA SHOWN	01/10/08
DATE:	JANUARY 2007	BY:	NO.	REVISION	DATE

FINAL WATER PLAN
COVER SHEET

OWNER
LEONORA K. HOENES
15115 CARRS MILL ROAD
WOODSIE, MD 21797-9013
PHONE: (410) 442-0411

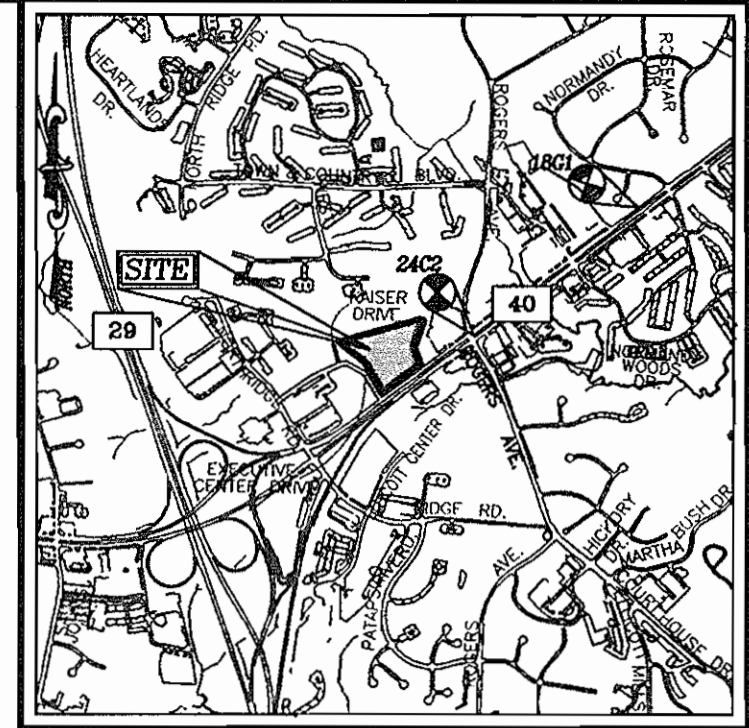
DEVELOPER
CARMAX AUTO SUPERSTORES, INC.
12800 TUCKAHOE CREEK PARKWAY
RICHMOND, VA 23238
C/O JOE JAGDMANN
PHONE: (804) 747-0422

CARMAX #7663
AUTO DEALERSHIP
HOENES PROPERTY
PARCEL 'H'
CONTRACT NO. 24-4426-D

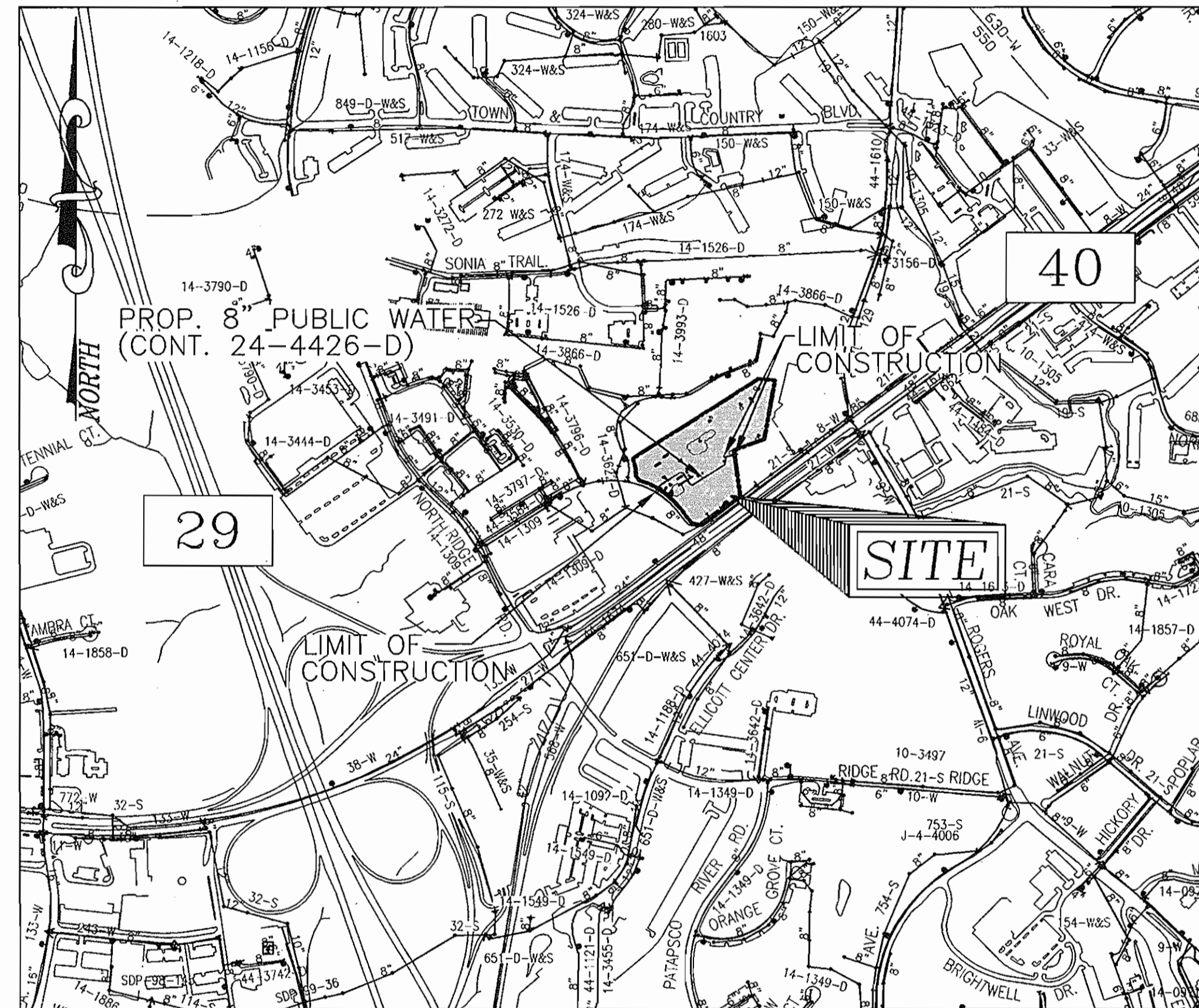
SCALE
AS
SHOWN

SHEET
1 OF 2

TAX MAP 24 BLOCK 6 PARCEL 848
2ND ELECTION DISTRICT HOWARD COUNTY, MARYLAND



VICINITY MAP
SCALE: 1"=2000'

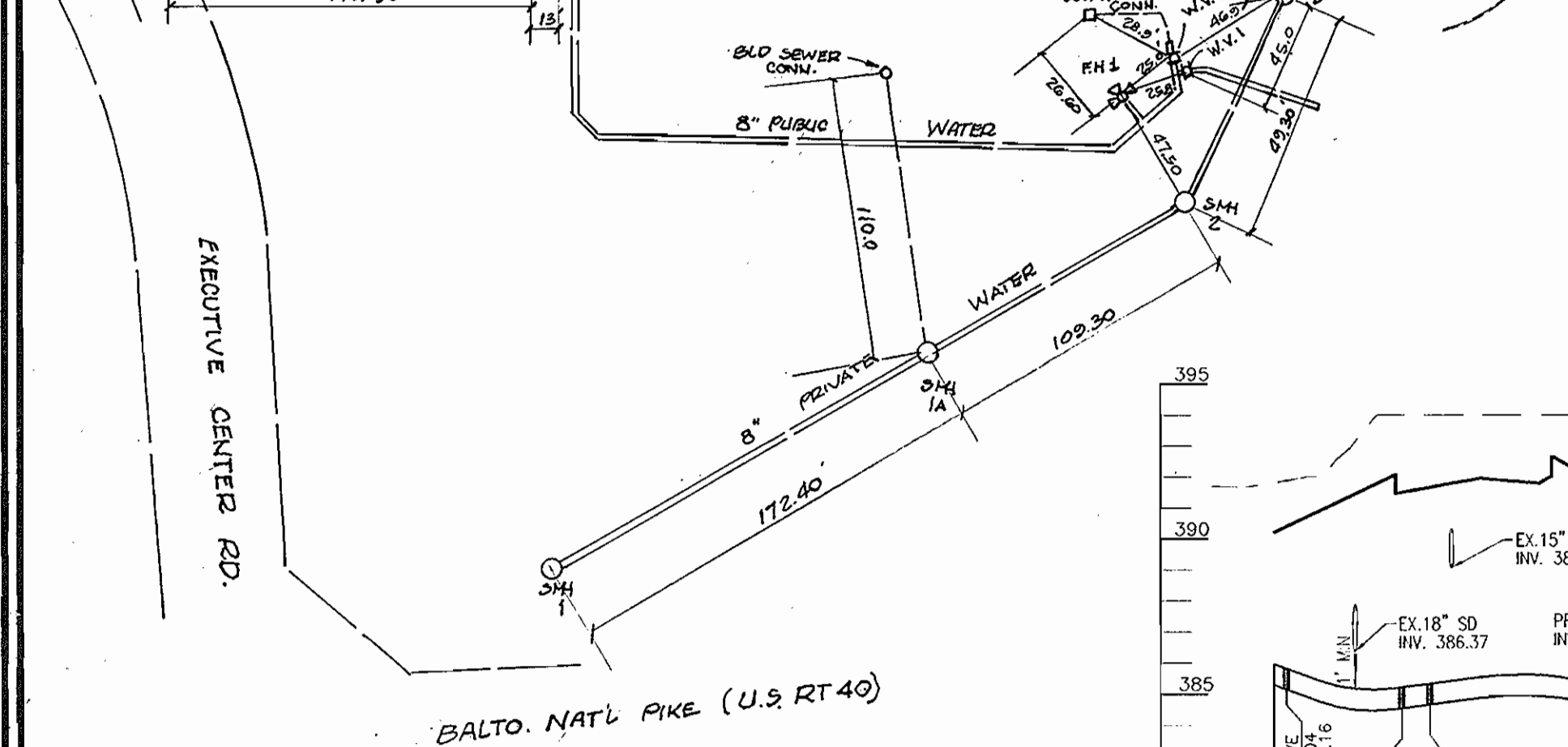
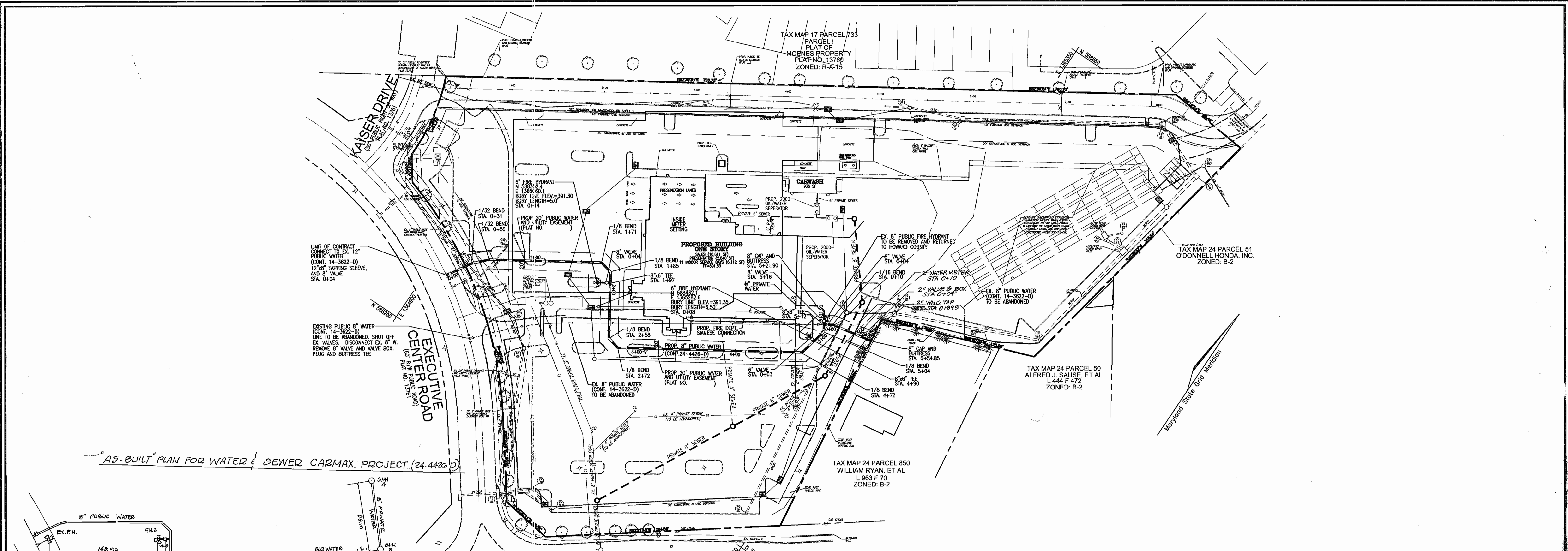


LOCATION MAP
SCALE: 1"=600'

WATER CODE: F-03
SEWER CODE: 1452800
TEST GRADIENT: 700

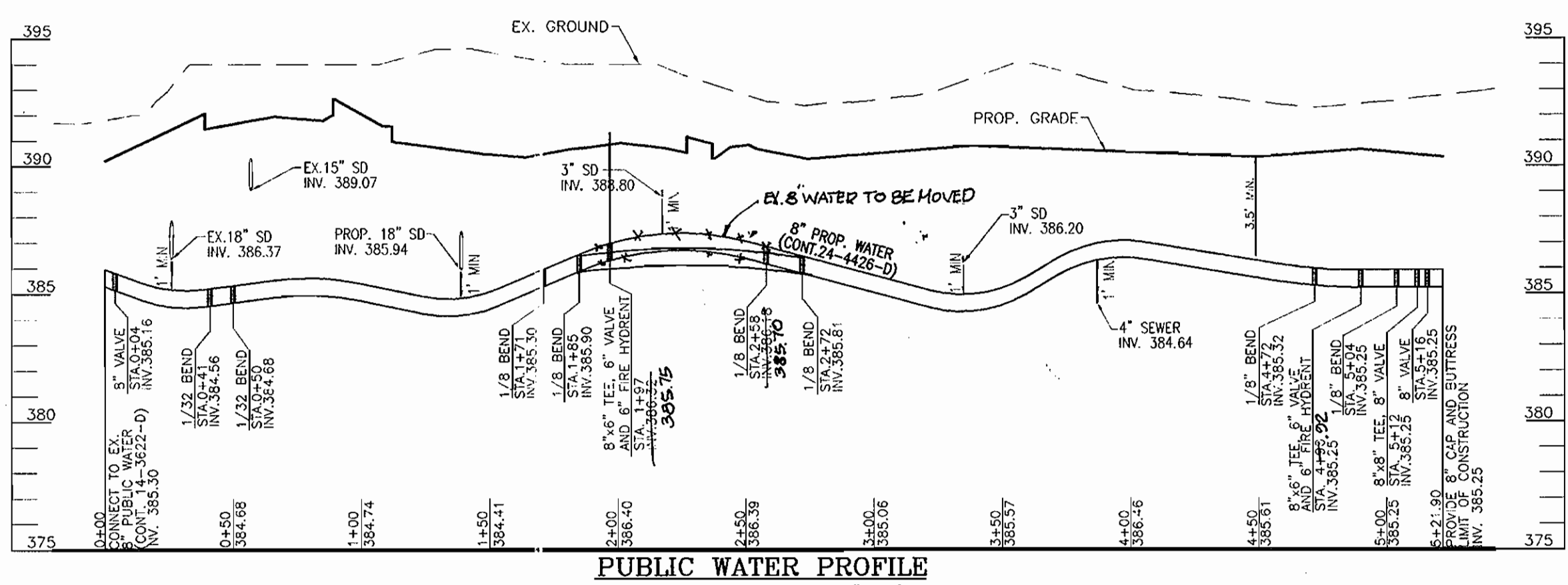
Type of Building :	WAREHOUSE/OFFICE
No. of Lots/Parcels :	1
No. of single Water House Connections :	1
No. of twin Water House Connections :	0
No. of Sewer House Connections :	0
Drainage Area :	PATAPSCO RIVER LOWER NORTH BRANCH
Treatment Plant :	PATAPSCO RIVER

QUANTITIES				
NAME OF UTILITY CONTRACTOR :				
SURVEY AND DRAFTING DIVISION AS-BUILT DATE :				
ITEMS	QUANTITIES ESTIMATED	AS-BUILT		
		QUANTITIES	TYPE	MANUFACTURER/SUPPLIER
WATER				
8" WATER	577 LF	577 L.F.	CLASS 52	ATLANTIC STATES
6" WATER	22 LF	22 L.F.	"	"
12" X 8" TAPPING SLEEVE	1 EA	1 EA	"	"
8" X 6" TEE	1 EA	1 EA	"	"
8" X 6" TEE	2 EA	2 EA	"	"
6" VALVE	3 EA	3 EA	"	MUELLER
6" VALVE	2 EA	2 EA	"	"
6" FIRE HYDRANT	2 EA	2 EA	"	MUELLER
8" - 1/8" BEND	6 EA	6 EA	CLASS 52	ATLANTIC STATES
8" - 1/16" BEND	1 EA	1 EA	"	"
8" - 1/32" BEND	2 EA	2 EA	"	"
8" CAP AND BUTTRESS	2 EA	2 EA	"	"

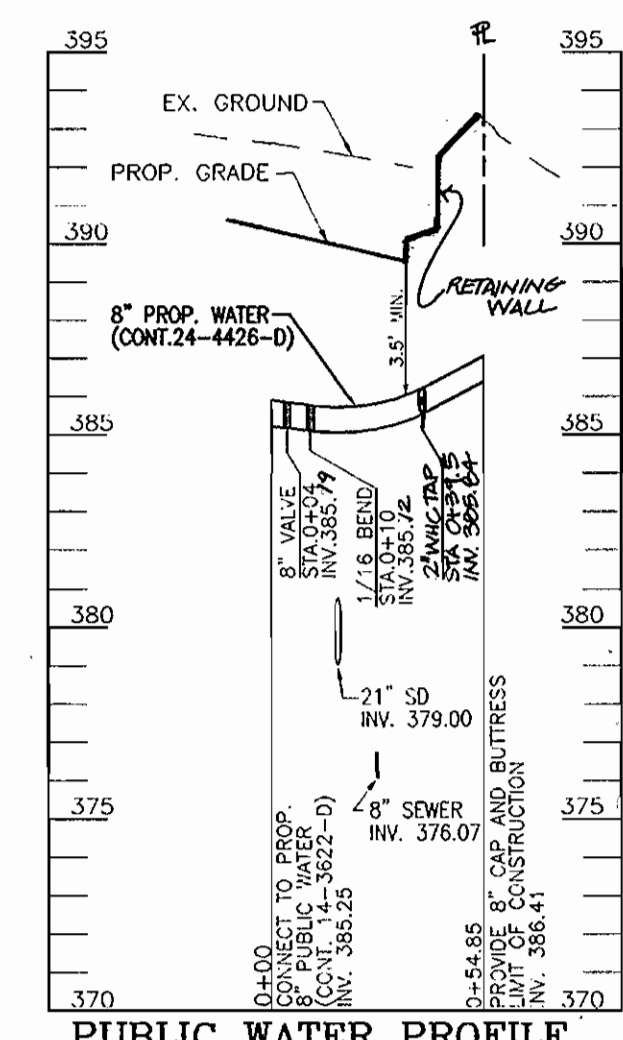


**BALTIMORE NATIONAL PIKE
U. S. ROUTE 40**
(SHA PLATS 3108 AND 3109 - R/W VARIES)
PLAT NO. 13761

PLAN VIEW
SCALE: 1"=50'



PUBLIC WATER PROFILE
SCALE: HORIZONTAL - 1"=50'
VERTICAL - 1"=5'



PUBLIC WATER PROFILE
SCALE: HORIZONTAL - 1"=50'
VERTICAL - 1"=5'

OWNER
LEONORA K. HOENES
15115 CARRS MILL ROAD
WOODBRINE, MD 21797-8013
PHONE: (410) 442-0411

DEVELOPER
CARMAX AUTO SUPERSTORES, INC.
12800 TUCKAHOE CREEK PARKWAY
RICHMOND, VA 23238
C/O JOE JAGDMANN
PHONE: (804) 747-0422

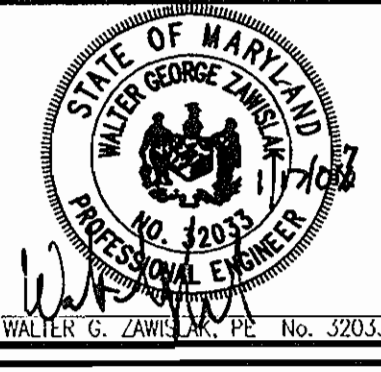
DEPARTMENT OF PUBLIC WORKS
HOWARD COUNTY, MARYLAND

R.H.V.
1-19-07
DATE

DEPARTMENT OF PLANNING & ZONING
HOWARD COUNTY, MARYLAND

[Signature]
2/17
DATE

**ROBERT H. VOGEL
ENGINEERING, INC.**
ENGINEERS • SURVEYORS • PLANNERS
8407 MAIN STREET TEL: 410.461.7666
ELLCOTT CITY, MD 21043 FAX: 410.461.8961



DES:	DZ				
DRN:	DZ				
CHK:	WGZ	RHV 2	ADD 2" WHC & 2" METER	<i>[Signature]</i>	
DATE:	JANUARY 2007	WCI 1	AS-BUILT DATA SHOWN	<i>[Signature]</i>	
BY:	NO.		REVISION	DATE	

**FINAL WATER PLAN
PLAN VIEW**

600' SCALE MAP NO. 24
BLOCK NO. 24

**CARMAX #7663
AUTO DEALERSHIP
HOENES PROPERTY
PARCEL 'H'**

CONTRACT NO. 24-4426-D

TAX MAP 24 BLOCK 6
2ND ELECTION DISTRICT

PARCEL 848
HOWARD COUNTY, MARYLAND

SCALE AS SHOWN
SHEET 2 OF 2

REVISED: 1/19/07 BY: R.H.V. DATE: 1/19/07
 REVISED: 1/19/07 BY: R.H.V. DATE: 1/19/07
 REVISED: 1/19/07 BY: R.H.V. DATE: 1/19/07