

GENERAL NOTES

- PART I**
- APPROXIMATE LOCATION OF EXISTING MAINS ARE SHOWN. THE CONTRACTOR SHALL TAKE ALL NECESSARY PRECAUTIONS TO PROTECT EXISTING MAINS AND SERVICES AND MAINTAIN UNINTERRUPTED SERVICE. ANY DAMAGE INCURRED SHALL BE REPAIRED IMMEDIATELY TO THE SATISFACTION OF THE ENGINEER AT THE CONTRACTOR'S EXPENSE.
 - TOPOGRAPHIC FIELD SURVEYS WERE PERFORMED IN JUNE 2007 BY ROBERT H. VOGEL ENGINEERING, INC.
 - THE COORDINATES SHOWN ON THE DRAWINGS ARE BASED ON MARYLAND STATE REFERENCE SYSTEM NAD '83/91 AS PROJECTED BY HOWARD COUNTY GEODETIC CONTROL STATIONS 37CA AND 33CB.
 - ALL VERTICAL CONTROLS ARE BASED ON NAVD' 88. VERTICAL CONTROLS PROVIDED ON DRAWINGS ARE:
 GEODETIC SURVEY CONTROL 37CA (N 564,321.638/E 1,382,742.840)
 BRASS DISC SET ON TOP OF A CONCRETE MONUMENT, LOCATED IN THE GRASS MEDIAN ALONG 20.5' WEST OF LANDING RD & 4.5' EAST OF SPLIT RAIL FENCE 26.5L NORTH SIDE CL OF DIRT RD.
 GEODETIC SURVEY CONTROL 3111 (N 561571.50/E 1,381,586.92)
 BRASS DISC SET ON TOP OF A CONCRETE MONUMENT, LOCATED IN THE GRASS MEDIAN ALONG ROUTE 1500' WEST OF LANDING RD, 1250' EAST OF SOUTH PARK LOT ROCKBURN BRANCH RD, 47' SOUTH OF OKE TOWER II.
 - ALL PIPE ELEVATIONS SHOWN ARE INVERT ELEVATIONS UNLESS OTHERWISE NOTED.
 - CLEAR ALL UTILITIES BY A MINIMUM OF 12 INCHES. CLEAR ALL POLES BY 5'-0" MINIMUM OR TUNNEL AS REQUIRED UNLESS OTHERWISE NOTED. THE OWNER HAS CONTACTED THE UTILITY COMPANIES AND HAS MADE ARRANGEMENTS FOR BRACING OF POLES AS SHOWN ON DRAWINGS. IN THE EVENT THE CONTRACTOR'S WORK REQUIRES THE BRACING OF ADDITIONAL POLES, ANY COST INCURRED BY THE OWNER FOR BRACING OF ADDITIONAL POLES OR DAMAGES SHALL BE DEDUCTED FROM MONIES OWED THE CONTRACTOR. THE CONTRACTOR SHALL COORDINATE WITH THE UTILITY COMPANIES TO SCHEDULE THE BRACING OF THE POLES.
 - FOR DETAILS NOT SHOWN ON THE DRAWINGS, AND FOR MATERIALS AND CONSTRUCTION METHODS USE, HOWARD COUNTY DESIGN MANUAL, VOLUME IV, STANDARD SPECIFICATIONS AND DETAILS FOR CONSTRUCTION (LATEST EDITION). THE CONTRACTOR SHALL HAVE A COPY OF VOLUME IV ON THE JOB.
 - WHERE TEST PITS HAVE BEEN MADE ON EXISTING UTILITIES, THEY ARE NOTED BY THE SYMBOL AT THE LOCATION OF THE TEST PIT. A NOTES OR NOTES CONTAINING THE RESULTS OF THE TEST PIT OR PITS IS INCLUDED ON THE DRAWINGS. EXISTING UTILITIES IN THE VICINITY OF THE PROPOSED WORK FOR WHICH TEST PITS HAVE NOT BEEN DUG SHALL BE LOCATED BY THE CONTRACTOR TWO WEEKS IN ADVANCE OF CONSTRUCTION OPERATION AT HIS OWN EXPENSE.
 - THE CONTRACTOR SHALL NOTIFY THE FOLLOWING UTILITY COMPANIES OR AGENCIES AT LEAST FIVE WORKING DAYS BEFORE STARTING WORK SHOWN THESE PLANS:
 AT&T _____ 1-800-252-1133
 BGE (CONTRACTOR SERVICE) _____ 410-850-4620
 BGE (EMERGENCY) _____ 410-685-1400
 BUREAU OF UTILITIES _____ 410-313-4900
 COLONIAL PIPELINE CO _____ 410-795-1390
 MISS UTILITY _____ 1-800-257-7777
 STATE HIGHWAY ADMINISTRATION _____ 410-531-5533
 VERIZON _____ 1-800-743-0033/410-224-9210
 - TREES AND SHRUBS ARE TO BE PROTECTED FROM DAMAGE TO THE MAXIMUM EXTENT. TREES AND SHRUBS LOCATED WITHIN THE CONSTRUCTION STRIP ARE NOT TO BE REMOVED OR DAMAGED BY THE CONTRACTOR
 - THE CONTRACTOR SHALL REMOVE TREES, STUMPS AND ROOTS ALONG THE LINE OF EXCAVATION. PAYMENT FOR SUCH REMOVAL SHALL BE INCLUDED IN THE UNIT PRICE BID FOR THE CONSTRUCTION OF THE MAIN.
 - THE CONTRACTOR SHALL NOTIFY THE BUREAU OF HIGHWAYS, HOWARD COUNTY, AT (410) 313-7450 AT LEAST FIVE WORKING DAYS BEFORE ANY OPEN CUTTING OR BORING/JACKING OF ANY COUNTY ROAD FOR LAYING WATER/SEWER MAINS OR HOUSE CONNECTIONS. THE APPROVAL OF THESE DRAWINGS WILL CONSTITUTE COMPLIANCE WITH DPW REQUIREMENTS PER SECTION 18.114(a) OF THE HOWARD COUNTY CODE.

PART II - WATER

- ALL WATER MAINS TO BE D.I.P. CLASS 54 UNLESS OTHERWISE NOTED.
- TOPS OF ALL WATER MAINS TO HAVE A MINIMUM OF 3'-6" COVER UNLESS OTHERWISE NOTED.
- VALVES ADJACENT TO TEES SHALL BE STRAPPED TO TEES.
- ALL FITTINGS SHALL BE BUTTRESSED OR ANCHORED WITH CONCRETE IN ACCORDANCE WITH THE STANDARD DETAILS UNLESS OTHERWISE PROVIDED FOR ON THE DRAWINGS.
- FIRE HYDRANTS SHALL BE SET TO THE BURY LINE ELEVATIONS SHOWN ON THE DRAWINGS. ALL FIRE HYDRANTS SHALL BE RESTRAINED AND BUTTRESSED WITH CONCRETE IN ACCORDANCE WITH THE STANDARD DETAIL. THE SOIL AROUND THE FIRE HYDRANT SHALL BE COMPACTED IN ACCORDANCE WITH SECTION 1000 AND 1005 OF THE STANDARD SPECIFICATIONS.
- THE CONTRACTOR SHALL NOT OPERATE ANY WATER MAIN VALVES ON THE EXISTING WATER SYSTEM.
- ALL WATER HOUSE CONNECTIONS SHALL BE FOR INSIDE METER SETTING UNLESS OTHERWISE NOTED ON THE PLANS OR IN SPECIFICATIONS.

PART III - SEWER

- ALL SEWER MAINS SHALL BE D.I.P. OR P.V.C UNLESS OTHERWISE NOTED.
- ALL MANHOLES SHALL BE 4'-0" INSIDE DIAMETER UNLESS OTHERWISE NOTED.
- FORCE MAINS SHALL BE D.I.P. ONLY.
- MANHOLES SHOWN WITH 12" AND 16" WALLS ARE FOR BRICK MANHOLES ONLY.
- MANHOLES DESIGNATED W.T. IN PLAN AND PROFILE SHALL HAVE WATERTIGHT FRAME AND COVERS, STANDARD DETAIL G5.52. WHERE WATERTIGHT FRAME AND COVER IS USED, SET TOP OF FRAME 1'-6" ABOVE FINISHED GRADE UNLESS OTHERWISE NOTED ON THE DRAWINGS.
- HOUSE(S) WITH THE SYMBOL "C.N.S." INDICATES THAT CELLAR CANNOT BE SERVED.

SEDIMENT CONTROL MEASURES WILL BE IMPLEMENTED IN ACCORDANCE WITH SECTION 219 OF THE SPECIFICATIONS AND WITH ROAD CONSTRUCTION PLAN F-09-122.

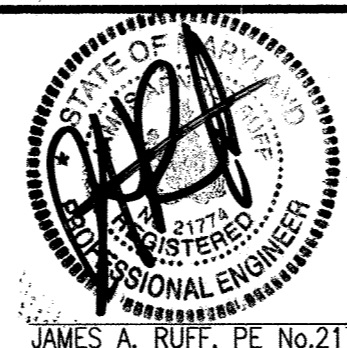
THIS DEVELOPMENT IS APPROVED FOR SOIL EROSION AND SEDIMENT CONTROL BY THE SOIL CONSERVATION DISTRICT.

SOIL CONSERVATION DISTRICT
 DATE: 1/5/10

DEPARTMENT OF PUBLIC WORKS
 HOWARD COUNTY, MARYLAND
 DATE: 1/11/10
 CHIEF, BUREAU OF UTILITIES

DEPARTMENT OF PLANNING & ZONING
 HOWARD COUNTY, MARYLAND
 DATE: 1/11/10
 CHIEF, DEVELOPMENT ENGINEERING DIVISION

ROBERT H. VOGEL ENGINEERING, INC.
 ENGINEERS • SURVEYORS • PLANNERS
 8407 MAIN STREET
 ELLICOTT CITY, MD 21043
 TEL: 410.461.7666
 FAX: 410.461.8961



NO.	REVISION	DATE
1	REVISE QUANTITIES TO INCLUDE 2" PIPE CONNECTION TO LOT 4-11	8/10/17
2	REVISED WATER AND SEWER DESIGN TO INCREASE THE TOTAL NUMBER OF LOTS FROM 36 TO 39 (LOTS 24, 25, 26, 27, 28, 29)	04/11/14
3	REVISE WATER/SEWER DESIGN TO INCLUDE LOTS 24 THRU 29	8/8/13
4	ASBUILT INFORMATION ADDED.	6/18/12
5	REMOVE WATER AND SEWER MAINS ALONG USE-IN-COMMON DRIVE THAT SERVE LOTS 24-29	6/11/12
6	REVISION	

**FINAL WATER & SEWER PLAN
 COVER SHEET
 CONTRACT 14-4412-D**

AS BUILTS
 DATE: 6/18/12
 DATE: 6/7/2012

GROVEMONT OVERLOOK
 LOTS 1, 7-19, 23-31, 34-38, 40-41, 45-49 & OPEN SPACE LOTS 4-6, & NON-BUILDABLE BULK PARCELS A, B, C, D, & E
 PARCEL 749 & P/O 619
 1ST ELECTION DISTRICT
 HOWARD COUNTY, MARYLAND

SCALE AS SHOWN
 SHEET 1 OF 4

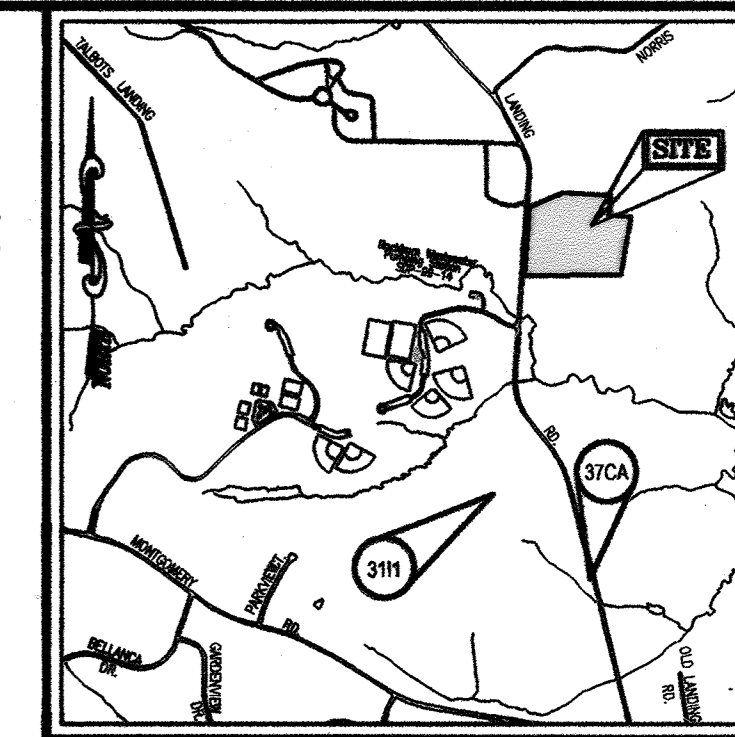
FINAL WATER AND SEWER PLAN GROVEMONT OVERLOOK

LOTS 1, 7-19, 23-31, 34-38, 40-42, 45-49 & OPEN SPACE LOTS 4-6, & NON-BUILDABLE BULK PARCELS A, B, C, D, & E

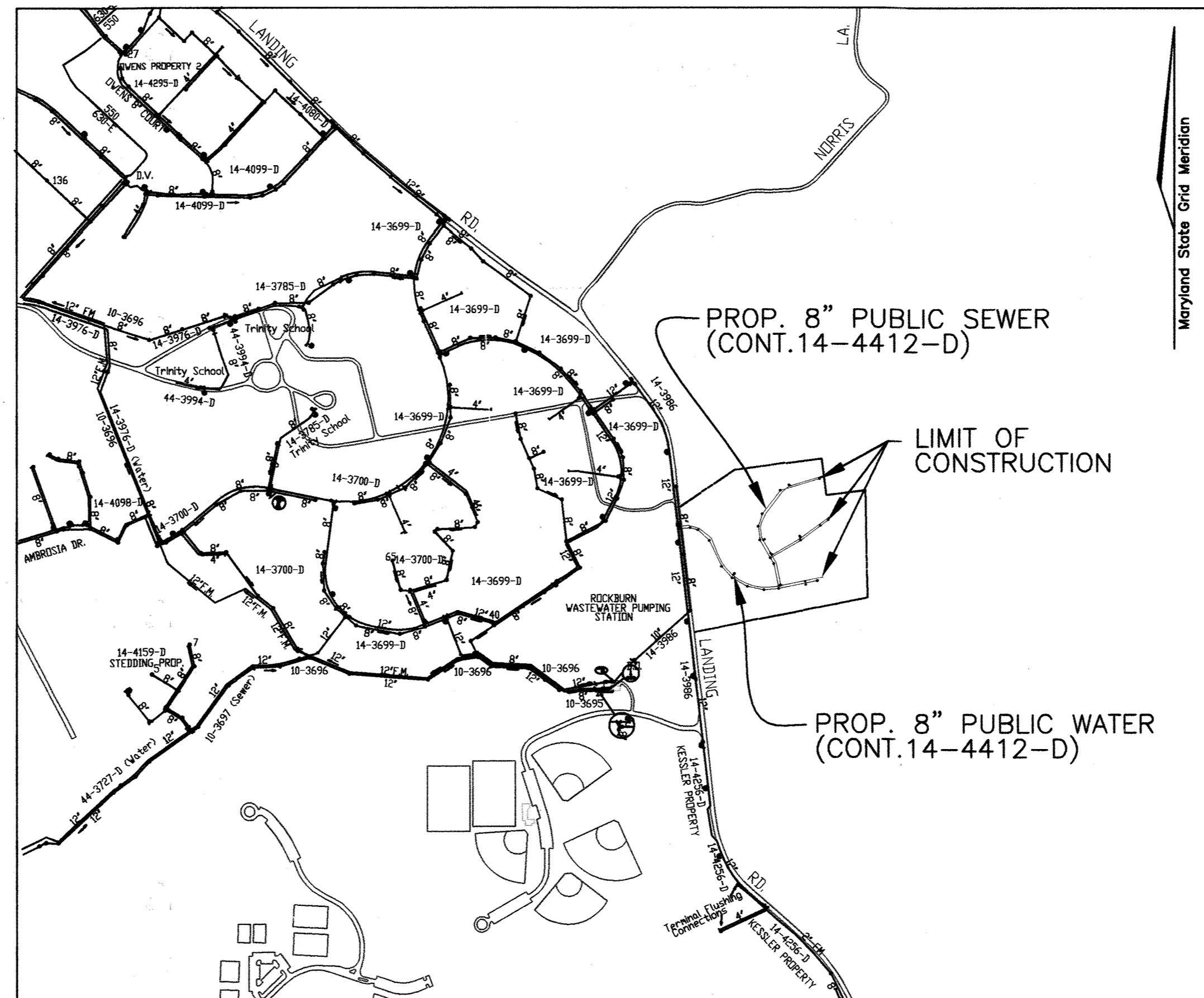
CONTRACT NO. 14-4412-D

BENCHMARKS

COORDINATES BASED ON NAD '83, MARYLAND COORDINATE SYSTEM AS PROJECTED BY HOWARD COUNTY GEODETIC CONTROL STATIONS 37CA, 3111
 37CA N 564,321.638 E 1,382,742.840 ELEV. 257.684'
 3111 N 565,004.699 E 1,381,586.92 ELEV. 306.017'



VICINITY MAP
 SCALE: 1"=2000'
 ADC COORDINATES=17, C5



WATER CODE: 550
 TEST GRADIENT: 700

LOCATION MAP
 SCALE: 1"=600'

TYPE OF BUILDING: RESIDENTIAL SINGLE FAMILY DETACHED
 NO. OF UNITS/PARCELS: 36
 NO. OF WATER HOUSE CONNECTIONS: 36
 NO. OF SEWER HOUSE CONNECTIONS: 36
 DRAINAGE AREA: PATAPSCO RIVER
 TREATMENT PLANT: ROCKBURN WASTEWATER PUMPING STATION

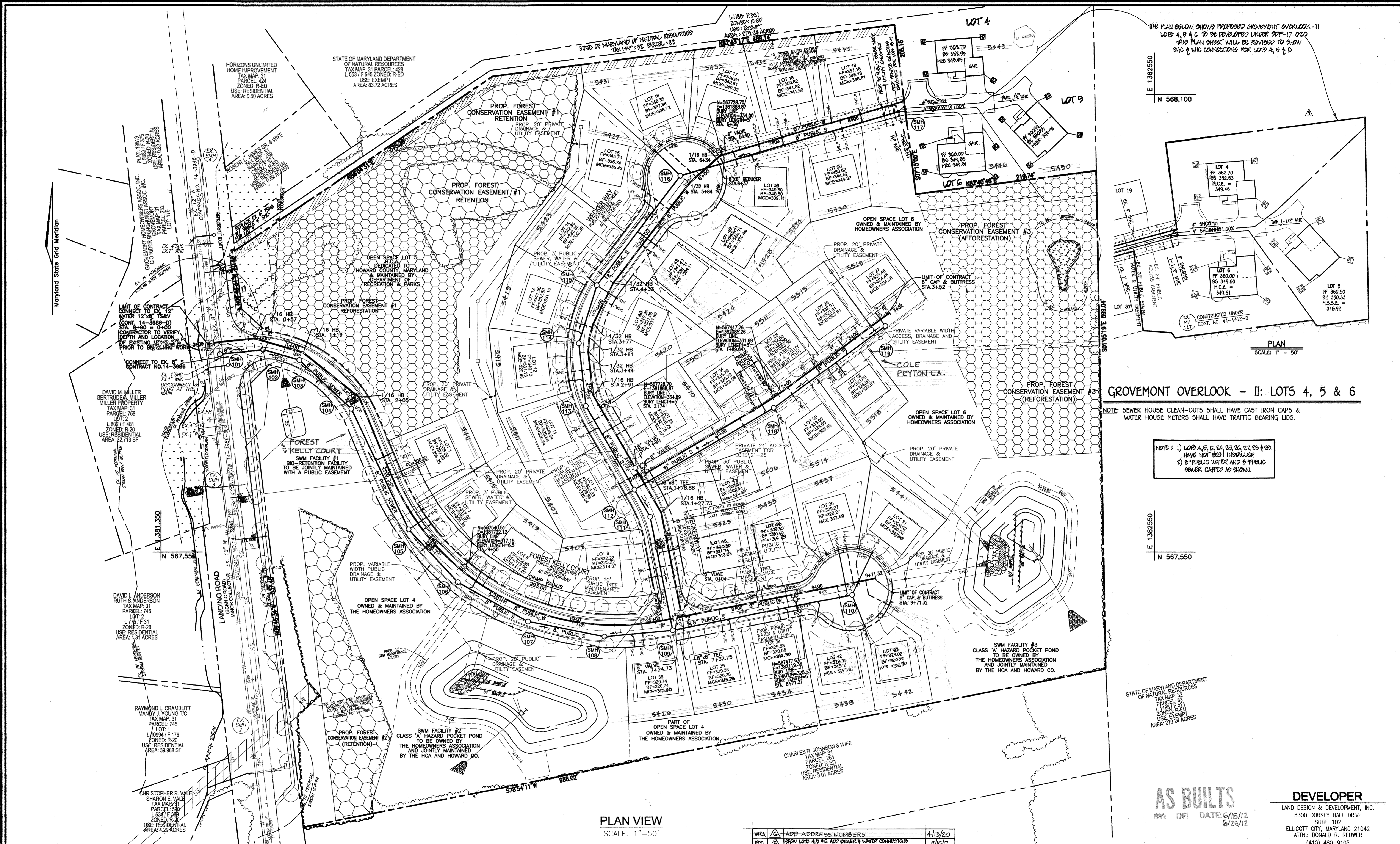
NOTE: LOTS 4, 5, 6, 24, 25, 26, 27, 28, 29 HAVE NOT BEEN INSTALLED.

LEGEND

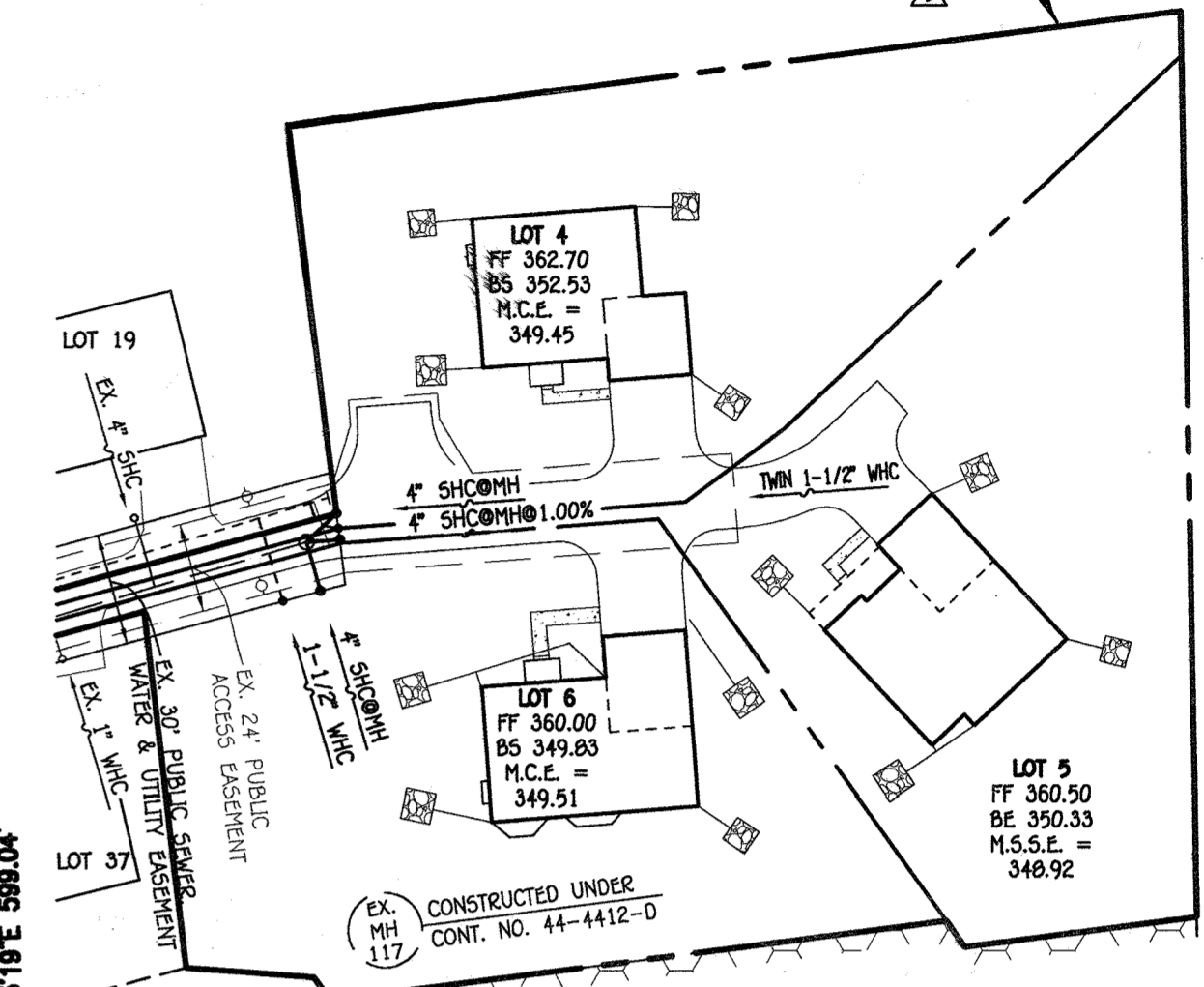
- EXISTING TREELINE
- PROPOSED TREELINE
- EXISTING WATER MAIN
- PROPOSED WATER MAIN
- FIRE HYDRANT
- PROPOSED VALVE
- PROPOSED TEE
- PROPOSED STORM DRAIN
- EXISTING STORM DRAIN
- PROPOSED SEWER
- EXISTING SEWER
- SEWER MANHOLE
- WATER HOUSE CONNECTION
- SEWER HOUSE CONNECTION
- PROPOSED SIGN
- PROPOSED LIGHT

QUANTITIES

NAME OF UTILITY CONTRACTOR : S.E.H. EXCAVATING, 2940 DEDE ROAD, FINNISBURG, MD				
SURVEY AND DRAFTING DIVISION AS-BUILT DATE : 5/22/12				
ITEMS	QUANTITIES ESTIMATED	AS-BUILT		
		QUANTITIES	TYPE	MANUFACTURER/SUPPLIER
WATER				
8" W. (DIP)	1962 LF	1623 LF	D.I.P.	GRAFFIN PIPE PROD.
8" W. (DIP)	224 LF	244 LF	D.I.P.	GRAFFIN PIPE PROD.
FIRE HYDRANT	5 EACH	4 EACH	A45S	MUELLER CO. / FERUGUSSON
8"X8" TEE	2 EACH	2 EACH	D.I.P.	TYLER UNION / FERUGUSSON
8"X6" TEE	5 EACH	5 EACH	D.I.P.	TYLER UNION / FERUGUSSON
8" VALVE	5 EACH	5 EACH	D.I.P.	TYLER UNION / FERUGUSSON
6" VALVE	1 EACH	5 EACH	GATE VALVE	MUELLER CO. / FERUGUSSON
8"X8" REDUCER	1 EACH	1 EACH	GATE VALVE	MUELLER CO. / FERUGUSSON
12"X8" TAPPING SLEEVE	1 EACH	1 EACH	D.I.P.	TYLER UNION / FERUGUSSON
1" WHC	728 LF	1 EACH	STAINLESS STEEL	SMITH BLAIR / FERUGUSSON
1/16 BEND	6 EACH	674 LF	TYPE 'K' COPPER	MUELLER CO. / FERUGUSSON
1/32 BEND	5 EACH	6 EACH	D.I.P.	TYLER UNION / FERUGUSSON
8" CAP & BUTTRESS	2 EACH	5 EACH	D.I.P.	TYLER UNION / FERUGUSSON
6" CAP & BUTTRESS	1 EACH	2 EACH	D.I.P.	MULTI-FITTINGS / FERUGUSSON
1 1/2" W.A.C.	96 LF	1 EACH	D.I.P.	MULTI-FITTINGS / FERUGUSSON
1 1/2" W.A.C.	96 LF	1 EACH	D.I.P.	MULTI-FITTINGS / FERUGUSSON
MANHOLE	1 EACH	1 EACH	P.V.C.	DIAMOND PLASTICS / FERUGUSSON
8" SEWER	2077 LF	1742 LF	P.V.C.	DIAMOND PLASTICS / FERUGUSSON
MANHOLE	19 EACH	17 EACH	PRECAST CONC.	ADVANCED DRAINAGE SYSTEM S.E.H.
4" SHC	760 LF	631 LF	P.V.C.	DIAMOND PLASTICS / FERUGUSSON



THE PLAN BELOW SHOWS PROPOSED GROVEMONT OVERLOOK - II LOTS 4, 5 & 6 TO BE DEVELOPED UNDER 207-17-020. THIS PLAN SHEET WILL BE REVISED TO SHOW SMC & WMC CONNECTIONS FOR LOTS 4, 5 & 6.



PLAN
SCALE: 1" = 50'

GROVEMONT OVERLOOK - II: LOTS 4, 5 & 6

NOTE: SEWER HOUSE CLEAN-OUTS SHALL HAVE CAST IRON CAPS & WATER HOUSE METERS SHALL HAVE TRAFFIC BEARING LIDS.

NOTE: 1) LOTS 4, 5, 6, 21, 22, 23, 24, 25 & 26 HAVE NOT BEEN INSTALLED.
2) 8" PUBLIC WATER AND 8" PUBLIC SEWER CAPS TO BE INSTALLED.

DEPARTMENT OF PUBLIC WORKS
HOWARD COUNTY, MARYLAND

CHIEF, BUREAU OF UTILITIES

DEPARTMENT OF PLANNING & ZONING
HOWARD COUNTY, MARYLAND

CHIEF, DEVELOPMENT ENGINEERING DIVISION

ROBERT H. VOGEL ENGINEERING, INC.
ENGINEERS • SURVEYORS • PLANNERS
8407 MAIN STREET
ELICOTT CITY, MD 21043
TEL: 410.461.7666
FAX: 410.461.8961

PROFESSIONAL CERTIFICATE
I HEREBY CERTIFY THAT THIS DOCUMENT WAS PREPARED OR APPROVED BY ME AND THAT I AM A LICENSED PROFESSIONAL ENGINEER UNDER THE LAWS OF THE STATE OF MARYLAND EXPIRES 11-30-2010

DRN: KG DES: RJ
CHK: JAR
DATE: DECEMBER 2009

JAMES A. RUFF, PE No. 21774

BY	NO.	REVISION	DATE
WKA	1	ADD ADDRESS NUMBERS	4/19/20
YDC	2	SHOW LOTS 4, 5 & 6 AND SEWER & WATER CONNECTIONS. REVISED PLAN VIEW ACCORD TO SUBMITTAL PLAN VIEW CHECKS.	2/16/17
RVE	4	REVISE VIEWS & COVER DESIGN TO INCREASE THE TOTAL HOA. SEE DE LOTS FROM 3630-38, AND MADOLEY WHICKS & SHICKS.	04/11/19
RVE	3	REVISED WATER & SEWER DESIGN TO INCLUDE LOTS 24 THRU 28.	9/8/13
RVE	2	REVISED SMC & FOR LOTS 30 THRU 36.	01/29/13
DFI	1	ASBUILT INFORMATION ADDED.	6/18/12
	1	REMOVE WATER AND SEWER MAINS ALONG USE-IN-COMMON DRIVE THAT SERVES LOTS 24-29.	6/4/12

FINAL WATER & SEWER PLAN
PLAN VIEW
CONTRACT 14-4412-D

AS BUILTS
BY: DFI DATE: 6/18/12
6/28/12

DEVELOPER
LAND DESIGN & DEVELOPMENT, INC.
5300 DORSEY HALL DRIVE
SUITE 102
ELICOTT CITY, MARYLAND 21042
ATTN: DONALD R. REUWER
(410) 480-9105

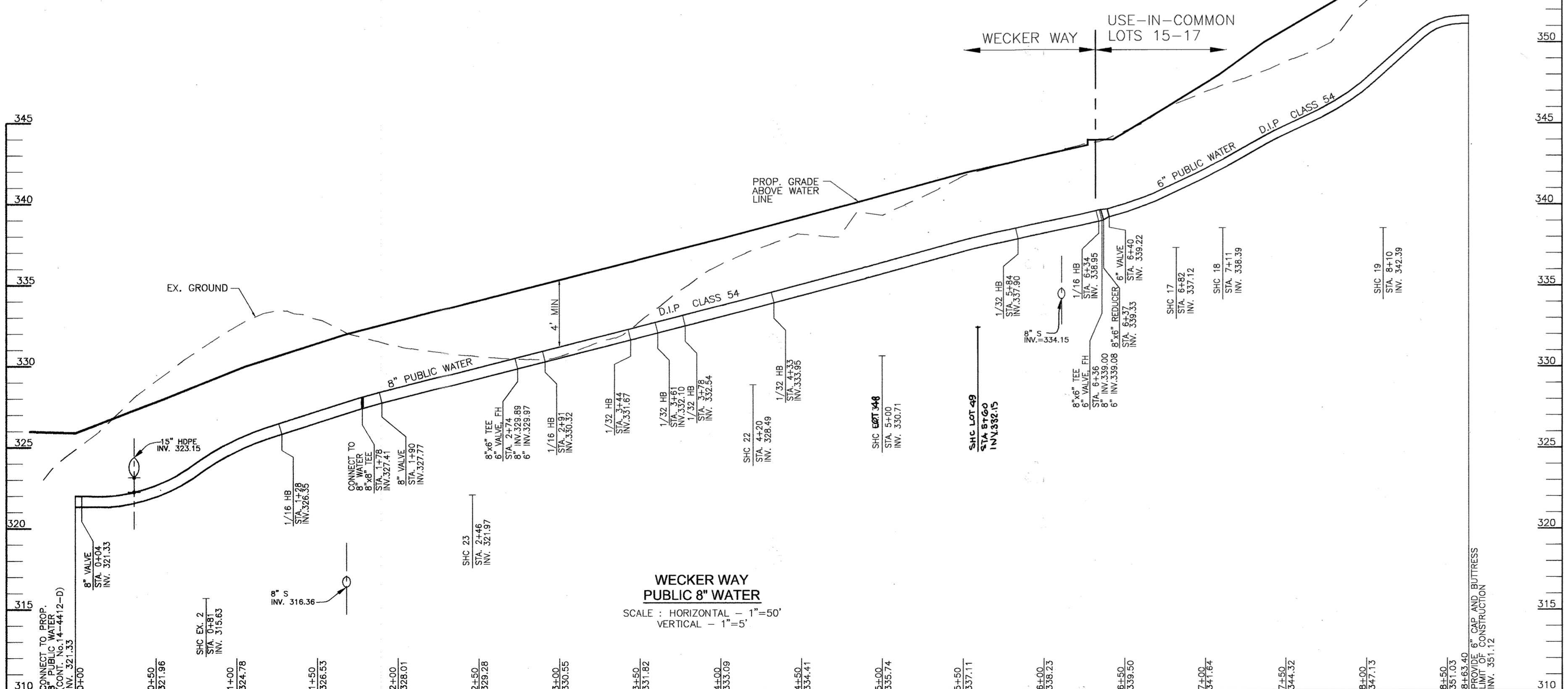
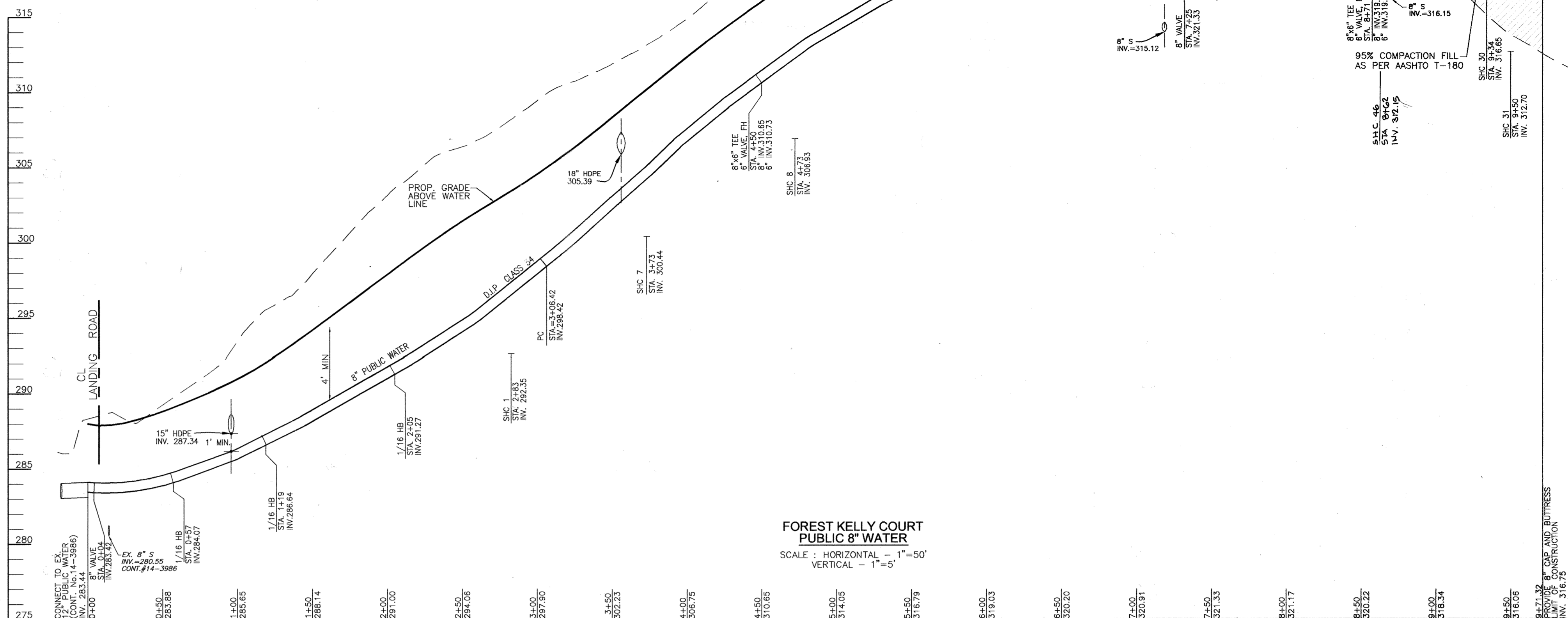
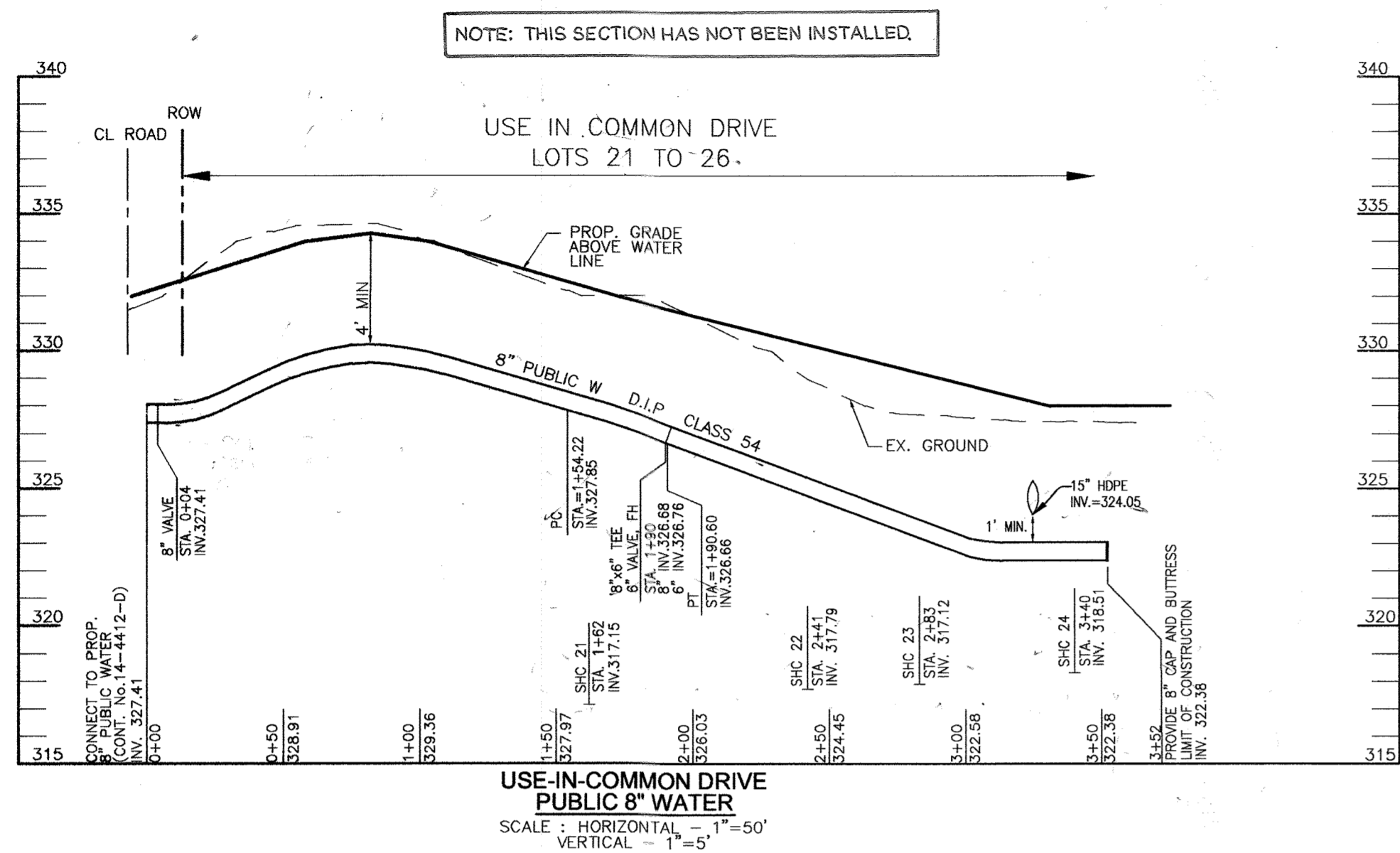
GROVEMONT OVERLOOK
LOTS 1, 7, 19, 23, 31, 34, 38, 40, 42, 45-49
OPEN SPACE LOTS 4-6 & NON-BUILDABLE BULK PARCELS A, B, C, D, & E

TAX MAP 31 BLOCK 24 PARCEL 749 & P/O 619
1ST ELECTION DISTRICT HOWARD COUNTY, MARYLAND

SCALE AS SHOWN
SHEET 2 OF 4

K:\Projects\104-571\ENCR\dwg\104-571_FINAL_VS\104-571_FINAL_VS_Plan.dwg, 12/2/2009 8:53:49 AM

K:\Projects\04-571 ENGR\FINAL WS\US_FINAL-W-PROFILLING.dwg, 12/27/2009 8:57:27 AM



WATER MAIN LOCATION CHART	
WL STA.	APPURTENANCE
FOREST KELLY COURT	
0+00	12"X8" TAPPING SLEEVE & VALVE
0+57	8" 1/16 HORIZONTAL BEND
1+19	8" 1/16 HORIZONTAL BEND
2+05	8" 1/16 HORIZONTAL BEND
3+06.42	PC 293' CRIMP RADIUS
4+50	8"X6" TEE, 6" VALVE & FH
7+09.13	PT 293' CRIMP RADIUS
7+24.73	8" VALVE
7+32.75	8"X8" TEE
8+71.27	8"X6" TEE, 6" VALVE & FH
9+71.32	8" CAP & BUTTRESS
WECKER WAY	
0+00	8"X8" TEE
0+04	8" VALVE
1+27.73	8" 1/16 HORIZONTAL BEND
1+78.88	8"X8" TEE
1+80	8" VALVE
2+74	8"X6" TEE, 6" VALVE & FH
2+91	8" 1/16 HORIZONTAL BEND
3+44	8" 1/32 HORIZONTAL BEND
3+61	8" 1/32 HORIZONTAL BEND
3+77	8" 1/32 HORIZONTAL BEND
4+33	8" 1/32 HORIZONTAL BEND
5+84	8" 1/32 HORIZONTAL BEND
6+34	8" 1/16 HORIZONTAL BEND
6+36	8"X6" TEE, 6" VALVE & FH
6+37	8"X6" REDUCER
6+40	6" VALVE
8+63.40	8" CAP & BUTTRESS
USE-IN-COMMON DRIVE	
0+00	8"X8" TEE
0+04	8" VALVE
1+54.22	PC 350' CRIMP RADIUS
1+89.64	8"X6" TEE, 6" VALVE & FH
1+90.60	PT 350' CRIMP RADIUS
3+52	8" CAP & BUTTRESS

AS BUILTS
ON DATE 6/18/12
6/28/12

NOTE: THESE ITEMS HAVE NOT BEEN INSTALLED.

DEVELOPER

LAND DESIGN & DEVELOPMENT, INC.
5300 DORSEY HALL DRIVE
SUITE 102
ELLCOTT CITY, MARYLAND 21042
ATTN: DONALD R. REULWER
(410) 480-9105

**FINAL WATER & SEWER PLAN
WATER PROFILES
CONTRACT 14-4412-D**

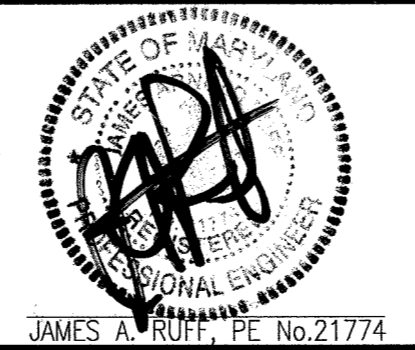
**GROVEMONT OVERLOOK
LOTS 1, 7, 19, 23, 31, 34, 38, 40, 42, 45 & OPEN SPACE
LOTS 4-6 & NON-BUILDABLE BULK PARCELS
A, B, C, D, & E**

SCALE AS SHOWN
SHEET 3 OF 4

DEPARTMENT OF PUBLIC WORKS
HOWARD COUNTY, MARYLAND
John C. ...
CHIEF, BUREAU OF UTILITIES

DEPARTMENT OF PLANNING & ZONING
HOWARD COUNTY, MARYLAND
...
CHIEF, DEVELOPMENT ENGINEERING DIVISION

ROBERT H. VOGEL ENGINEERING, INC.
ENGINEERS • SURVEYORS • PLANNERS
8407 MAIN STREET, ELLICOTT CITY, MD 21043
TEL: 410.461.7666 FAX: 410.461.8961



PROFESSIONAL CERTIFICATE	DATE: DECEMBER 2009
CHK: JAR	DES: RJ
DATE: DECEMBER 2009	BY: NO.

REV	4	REVISE WHEN SEWER DESIGN TO INCREASE THE TOTAL NUMBER OF SIPS FROM 56 TO 69, AND HEIGHT FROM 6-0" TO 6-6"	04/14/12
REV	3	REVISED WATER MAIN TO INCLUDE LOTS 24 THRU 29	8/8/13
DFI	3	ASBUILT INFORMATION ADDED.	6/18/12
	1	REMOVE WATER AND SEWER MAINS ALONG USE-IN-COMMON DRIVE THAT SERVE LOTS 24-29	5/4/12

TAX MAP 31 BLOCK 24 PARCEL 749 & P/O 619
1ST ELECTION DISTRICT HOWARD COUNTY, MARYLAND

ASBUILT UTILITY LOCATION CHART - WHC						
LOTS	FROM	TO	DISTANCE	TO	DISTANCE	REMARKS
1	WHC	SMH 104	84.40'	INLET I-4	64.40'	5411 FOREST KELLY COURT
49	WHC	STA 6+36 FH	93.00'	SMH 116	57.00'	5426 WECKER WAY
48	WHC	SMH 115	81.00'	SMH 116	100.00'	5424 WECKER WAY
4	TWIN WHC	SMH 117	10.00'	SHC LOT 4	2.00'	5449 WECKER WAY
5	TWIN WHC	SMH 117	10.00'	SHC LOT 5	2.00'	5450 WECKER WAY
6	WHC	SMH 117	14.00'	SHC LOT 6	9.00'	5446 WECKER WAY
7	WHC	INLET I-5	28.40'	INLET I-4	47.40'	5415 FOREST KELLY COURT
8	WHC	SMH 106	42.40'	SMH 107	69.70'	5419 FOREST KELLY COURT
9	WHC	INLET I-9	28.00'	INLET I-10	50.40'	5403 WECKER WAY
10	WHC	SMH 111	58.60'	SMH 112	25.00'	5407 WECKER WAY
11	WHC	STA: 2+74 FH	42.40'	SMH 113	26.60'	5411 WECKER WAY
12	WHC	SMH 113	46.60'	STA: 2+74 FH	62.50'	5415 WECKER WAY
13	WHC	SMH 114	31.00'	SMH 115	49.50'	5419 WECKER WAY
14	WHC	SMH 115	23.00'	SMH 114	93.00'	5423 WECKER WAY
15	WHC	STA: 6+36 FH	104.00'	SMH 116	49.00'	5427 WECKER WAY
16	WHC	SMH 116	46.60'	STA: 6+36 FH	73.60'	5431 WECKER WAY
17	WHC	STA: 6+36 FH	9.60'	SMH 116	79.00'	5435 WECKER WAY
18	WHC	STA: 6+36 FH	86.00'	SMH 117	134.60'	5439 WECKER WAY
19	WHC	STA: 6+36 FH	139.60'	SMH 117	81.00'	5443 WECKER WAY
37	WHC	STA: 6+36 FH	152.80'	SMH 117	73.00'	5438 WECKER WAY
38	WHC	STA: 6+36 FH	29.40'	SMH 116	68.50'	5434 WECKER WAY
40	WHC	SMH 115	31.60'	SMH 114	63.60'	5420 WECKER WAY
23	WHC	STA: 2+74 FH	43.30'	SMH 113	58.60'	5410 WECKER WAY
24	WHC	FIRE HYDRANT	28.00'	SMH 118	25.00'	5507 COLE PEYTON LANE
25	WHC	SMH 119	45.00'	SMH 118	60.00'	5511 COLE PEYTON LANE
26	WHC	SMH 119	70.00'	INLET	60.00'	5515 COLE PEYTON LANE
27	WHC	SMH 119	20.00'	INLET	39.00'	5519 COLE PEYTON LANE
28	WHC	SMH 119	89.00'	INLET	73.00'	5518 COLE PEYTON LANE
29	WHC	FIRE HYDRANT	35.00'	SMH 118	30.00'	5514 COLE PEYTON LANE
30	WHC	SMH 110	64.40'	INLET I-8	78.00'	5437 FOREST KELLY COURT
31	WHC	SMH 110	63.00'	INLET I-8	61.00'	5441 FOREST KELLY COURT
41	WHC	SMH 110	44.30'	INLET I-8	37.00'	5442 FOREST KELLY COURT
42	WHC	SMH 110	43.40'	INLET I-8	87.70'	5438 FOREST KELLY COURT
34	WHC	SMH 110	93.30'	STA: 8+71 FH	23.30'	5434 FOREST KELLY COURT
35	WHC	SMH 109	59.10'	INLET I-10	79.60'	5430 FOREST KELLY COURT
36	WHC	SMH 108	46.00'	SMH 109	40.20'	5426 FOREST KELLY COURT
45	WHC	SMH 109	111.00'	STA: 8+71 FH	116.00'	5429 FOREST KELLY COURT
46	WHC	SMH 109	116.00'	STA: 8+71 FH	113.00'	5433 FOREST KELLY COURT
47	WHC	SMH 112	157.00'	SMH 118	39.00'	5406 WECKER WAY

ASBUILT UTILITY LOCATION CHART - SHC						
LOTS	FROM	TO	DISTANCE	TO	DISTANCE	REMARKS
1	SHC	INLET I-5	75.00'	SMH 104	73.40'	5411 FOREST KELLY COURT
49	SHC	STA: 6+36 FH	85.50'	SMH 116	58.00'	5428 WECKER WAY
48	SHC	SMH 115	90.60'	SMH 116	91.00'	5424 WECKER WAY
4	SHC	SMH 117	10.00'	TWIN WHC 4&5	2.00'	5449 WECKER WAY
5	SHC	SMH 117	10.00'	TWIN WHC 4&5	2.00'	5450 WECKER WAY
6	SHC	SMH 117	12.00'	WHC LOT 6	9.00'	5446 WECKER WAY
7	SHC	INLET I-5	19.10'	SMH 105	28.00'	5419 FOREST KELLY COURT
8	SHC	SMH 106	37.00'	STA: 4+50 FH	21.20'	5419 FOREST KELLY COURT
9	SHC	INLET I-10	19.00'	INLET I-9	44.90'	5403 WECKER WAY
10	SHC	SMH 111	43.50'	SMH 112	16.00'	5407 WECKER WAY
11	SHC	SMH 112	94.20'	SMH 113	34.80'	5411 WECKER WAY
12	SHC	SMH 113	36.00'	SMH 114	48.30'	5415 WECKER WAY
13	SHC	SMH 114	23.10'	SMH 115	58.50'	5419 WECKER WAY
14	SHC	SMH 114	81.50'	SMH 115	15.10'	5423 WECKER WAY
15	SHC	SMH 116	56.20'	STA: 6+36 FH	112.70'	5427 WECKER WAY
16	SHC	SMH 116	48.10'	STA: 6+36 FH	83.00'	5431 WECKER WAY
17	SHC	SMH 116	103.60'	STA: 6+36 FH	48.70'	5435 WECKER WAY
18	SHC	SMH 116	131.00'	STA: 6+36 FH	76.00'	5439 WECKER WAY
19	SHC	SMH 117	46.80'	STA: 6+36 FH	181.60'	5443 WECKER WAY
37	SHC	SMH 117	82.60'	STA: 6+36 FH	143.00'	5438 WECKER WAY
38	SHC	SMH 116	90.00'	STA: 6+36 FH	45.50'	5434 WECKER WAY
40	SHC	SMH 115	32.00'	SMH 114	72.40'	5420 WECKER WAY
23	SHC	SMH 112	86.20'	SMH 113	51.00'	5410 WECKER WAY
24	SHC	FIRE HYDRANT	18.00'	SMH 118	28.00'	5507 COLE PEYTON LANE
25	SHC	SMH 119	59.00'	SMH 118	73.50'	5511 COLE PEYTON LANE
26	SHC	SMH 119	60.00'	INLET	51.00'	5515 COLE PEYTON LANE
27	SHC	SMH 119	24.00'	INLET	35.00'	5519 COLE PEYTON LANE
28	SHC	SMH 119	73.00'	INLET	59.50'	5518 COLE PEYTON LANE
29	SHC	FIRE HYDRANT	30.00'	SMH 118	7.00'	5514 COLE PEYTON LANE
30	SHC	SMH 110	66.50'	INLET I-8	47.00'	5437 FOREST KELLY COURT
31	SHC	SMH 110	62.50'	INLET I-8	69.75'	5441 FOREST KELLY COURT
41	SHC	SMH 110	42.30'	INLET I-8	101.75'	5442 FOREST KELLY COURT
42	SHC	SMH 110	47.00'	INLET I-8	87.70'	5438 FOREST KELLY COURT
34	SHC	STA: 8+71 FH	13.00'	SMH 110	81.40'	5434 FOREST KELLY COURT
35	SHC	INLET I-10	77.30'	STA: 8+71 FH	84.50'	5430 FOREST KELLY COURT
36	SHC	INLET I-10	74.40'	SMH 108	73.30'	5426 FOREST KELLY COURT
45	SHC	SMH 109	99.00'	SMH 111	51.50'	5429 FOREST KELLY COURT
46	SHC	SMH 109	145.00'	STA: 8+71 FH	83.50'	5433 FOREST KELLY COURT
47	SHC	SMH 112	114.00'	SMH 118	80.00'	5406 WECKER WAY

ASBUILT UTILITY LOCATION CHART - WATER VALVES						
WATER VALVES	FROM	TO	DISTANCE	TO	DISTANCE	REMARKS
FH VALVE STA: 4+50	W-V	STA: 4+50 FH	13.00'	SMH 106	17.80'	N. SIDE FOREST KELLY CT. BETWEEN LOTS 7 & 8
FH VALVE STA: 8+71	W-V	STA: 8+71 FH	21.80'	SMH 110	71.00'	S. SIDE FOREST KELLY CT. @ LOT 34
FOREST KELLY CT.	W-V	SMH 109	18.60'	INLET I-10	39.00'	INTERSECTION OF WECKER WAY & FOREST KELLY CT.
WECKER WAY	8" TEE & VALVE	SMH 109	26.50'	INLET I-10	33.00'	INTERSECTION OF WECKER WAY & FOREST KELLY CT.
WECKER WAY	8" TEE & VALVE	SMH 111	52.00'	SMH 112	23.00'	PRIVATE 24' ACCESS EASEMENT FOR LOTS 21-26 / 4, 6' STUB
WECKER WAY	8" TEE & VALVE	SMH 111	63.60'	SMH 112	30.00'	WECKER WAY
FH VALVE STA: 2+74	8" X 6" VALVE	STA: 2+74 FH	8.00'	SMH 113	19.30'	WECKER WAY
FH VALVE STA: 6+36	8" X 6" VALVE	STA: 6+36 FH	7.60'	SMH 116	54.00'	WECKER WAY
STA: 6+40	6" VALVE	FH	9.00'	SMH 116	58.00'	WECKER WAY
FH VALVE STA: 1+89	6" VALVE	FH	10.00'	SMH 118	14.00'	WECKER WAY PRIVATE DRIVE
5507 COLE PEYTON LANE						

*NOTE: THIS SHEET HAS BEEN ADDED FOR ASBUILT PURPOSES ONLY, IT IS NOT PART OF THE ORIGINAL PLAN SET.

AS BUILTS
 BY: DR DATE: 6/18/12
 6/28/12

DEVELOPER
 LAND DESIGN & DEVELOPMENT, INC.
 5300 DORSEY HALL DRIVE
 SUITE 102
 ELLICOTT CITY, MARYLAND 21042
 ATTN: DONALD R. NEUMER
 (410) 480-9105

DEPARTMENT OF PUBLIC WORKS
 HOWARD COUNTY, MARYLAND

DEPARTMENT OF PLANNING & ZONING
 HOWARD COUNTY, MARYLAND

CHIEF, BUREAU OF UTILITIES DATE

CHIEF, DEVELOPMENT ENGINEERING DIVISION DATE

ROBERT H. VOGEL
ENGINEERING, INC.
 ENGINEERS • SURVEYORS • PLANNERS
 8407 MAIN STREET TEL: 410.481.7888
 ELLICOTT CITY, MD 21043 FAX: 410.481.8941

PROFESSIONAL CERTIFICATE

DRN: KG DES: RJ

CHK: JMR

DATE: DECEMBER 2009

WRA ASBUILT INFORMATION UPDATED 4/13/20

BY NO. REVISION DATE

FINAL WATER & SEWER PLAN
SEWER PROFILES
CONTRACT 14-4412-D

GROVEMONT OVERLOOK
 LOTS 1, 7, 19, 23, 31, 34, 38, 40, 42, 46, 48 & OPEN SPACE
 LOTS 4-6 & NON-BUILDABLE BULK PARCELS
 A, B, C, D, & E

TAX MAP 31 BLOCK 24 PARCEL 749 & P/D 619
 1ST ELECTION DISTRICT HOWARD COUNTY, MARYLAND

SCALE AS SHOWN

SHEET 4A OF 4