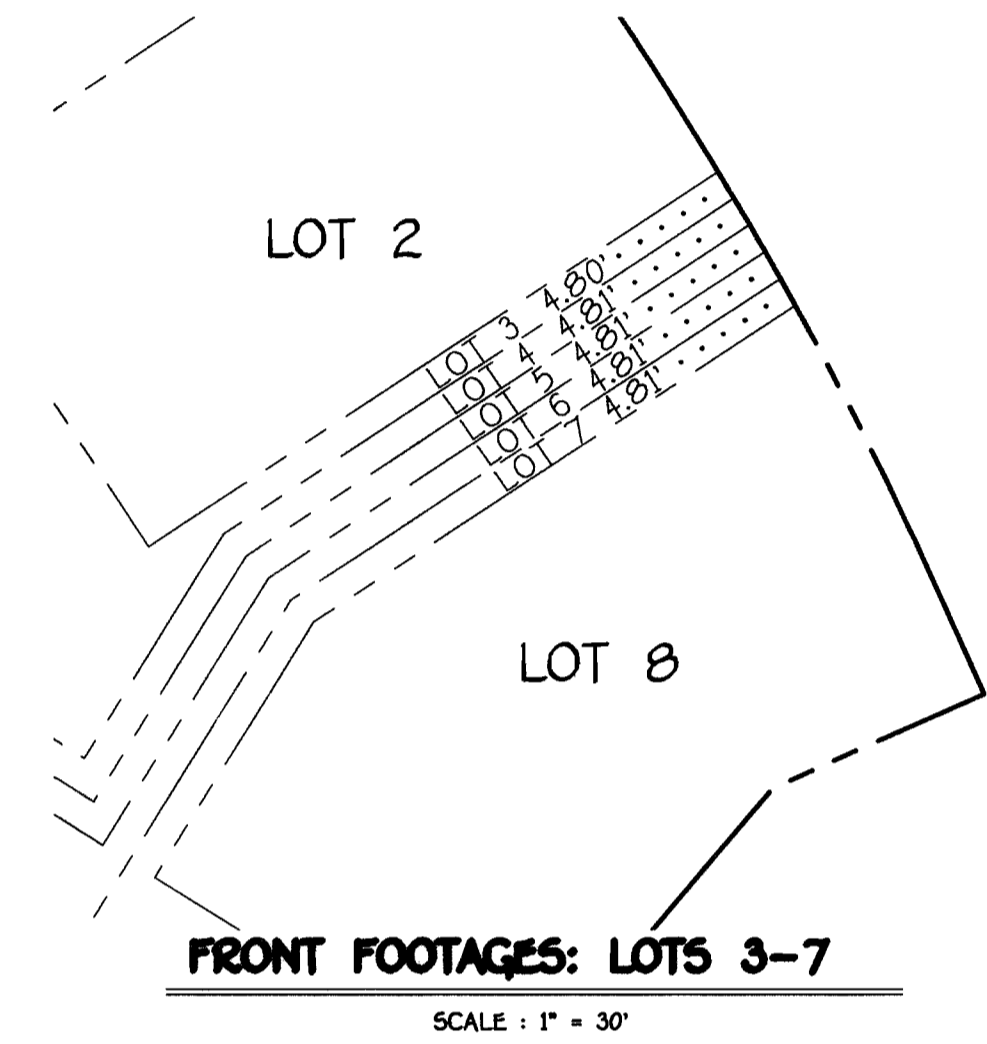


QUANTITIES				
ITEM	ESTIMATED	AS-BUILT		
		QUANTITIES	TYPE	SUPPLIER
8" CL. 52 D.I.P.	267 L.F.			
8" SEWER	110 L.F.			
4" SEWER	154 L.F.			
MANHOLES	5 EACH			
4" WATER	296 L.F.			
1" WATER	123 L.F.			
4" TAPPING VALVE	1 EACH			
12"x4" TAPPING SLEEVE	1 EACH			
1/8" H.B.	2 EACH			
1/16" H.B.	1 EACH			
4" PLUG & BUTTRESS	1 EACH			

NAME OF UTILITY CONTRACTOR:  
SURVEY & DRAFTING DIVISION AS-BUILT DATE:



**DEVELOPER'S CERTIFICATION**

I/WE HEREBY CERTIFY THAT ALL DEVELOPMENT AND CONSTRUCTION WILL BE DONE ACCORDING TO THIS PLAN OF DEVELOPMENT AND PLAN FOR EROSION AND SEDIMENT CONTROL AND THAT ALL RESPONSIBLE PERSONNEL INVOLVED IN THE CONSTRUCTION PROJECT WILL HAVE A CERTIFICATE OF ATTENDANCE AT THE DEPARTMENT OF THE ENVIRONMENT APPROVED TRAINING PROGRAM FOR THE CONTROL OF SEDIMENT AND EROSION BEFORE BEGINNING THE PROJECT. I ALSO AUTHORIZE PERIODIC ON-SITE INSPECTION BY THE HOWARD SOIL CONSERVATION DISTRICT OR THEIR AUTHORIZED AGENTS, AS ARE DEEMED NECESSARY.

*Paul W. Koebel* FOR:  
**ETC PARTNERSHIP** 06-30-06  
SIGNATURE OF DEVELOPER DATE

**ENGINEER'S CERTIFICATION**

I HEREBY CERTIFY THAT THIS PLAN FOR EROSION AND SEDIMENT CONTROL REPRESENTS A PRACTICAL AND WORKABLE PLAN BASED ON MY PERSONAL KNOWLEDGE OF THE SITE CONDITIONS AND THAT IT WAS PREPARED IN ACCORDANCE WITH THE REQUIREMENTS OF THE HOWARD SOIL CONSERVATION DISTRICT.

*Paul W. Koebel*  
SIGNATURE OF ENGINEER 06/30/06  
DATE

GP-06-96

REVIEWED FOR HOWARD COUNTY SOIL CONSERVATION DISTRICT AND MEETS TECHNICAL REQUIREMENTS.

*Jim Meyer* 7/24/06  
U.S.D.A. NATURAL RESOURCES CONSERVATION SERVICE DATE

THIS DEVELOPMENT IS APPROVED FOR EROSION AND SEDIMENT CONTROL BY HOWARD SOIL CONSERVATION DISTRICT.

*John K. [Signature]* 7/24/06  
APPROVED: HOWARD SOIL CONSERVATION DISTRICT DATE

SEDIMENT CONTROL MEASURES FOR THIS CONTRACT WILL BE IMPLEMENTED IN ACCORDANCE WITH SECTION 219 OF THE HOWARD COUNTY DESIGN MANUAL & STANDARDS AND SPECIFICATIONS FOR SOIL EROSION AND SEDIMENT CONTROL IN DEVELOPING AREAS AND AS SHOWN ON THESE PLANS.

*Paul W. Koebel* FOR:  
**ETC PARTNERSHIP** 06-30-06  
SIGNATURE OF DEVELOPER DATE

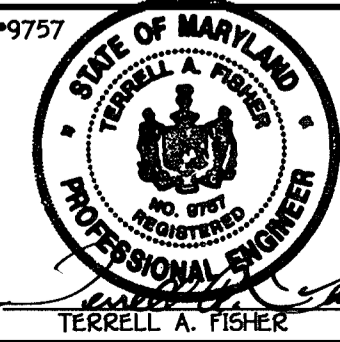
DEPARTMENT OF PUBLIC WORKS HOWARD COUNTY, MARYLAND

DEPARTMENT OF PLANNING AND ZONING HOWARD COUNTY, MARYLAND

*John K. [Signature]* 7/28/06  
DATE

*[Signature]* 7/28/06  
DATE

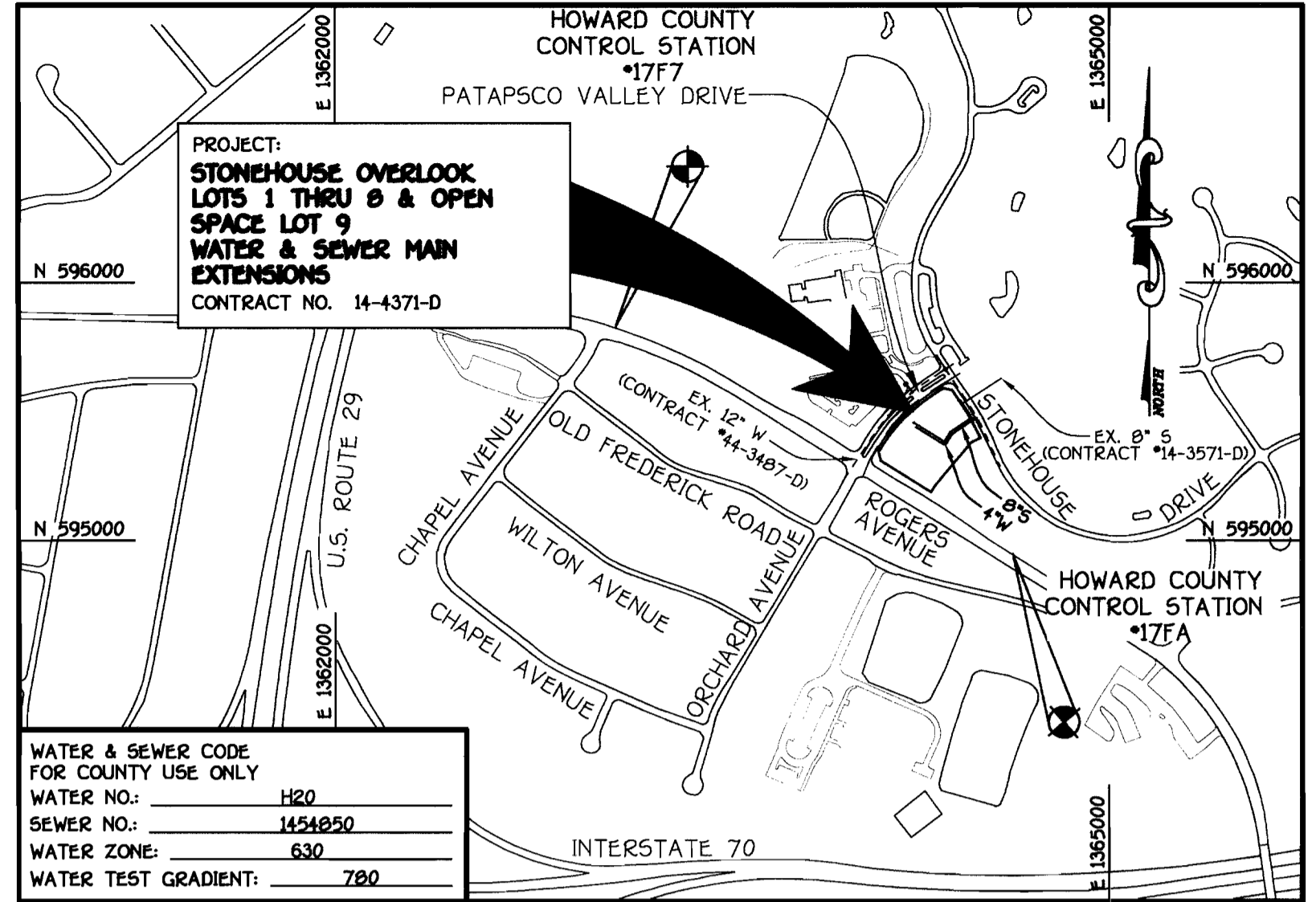
**FISHER, COLLINS & CARTER, INC.**  
CIVIL ENGINEERING CONSULTANTS & LAND SURVEYORS  
CENTRAL SQUARE OFFICE PARK - 10272 BALTIMORE NATIONAL PIKE  
ELlicott CITY, MARYLAND 21042  
(410) 461-2895



DESIGNED BY:	B.C.R.
DRAWN BY:	B.C.R.
CHECKED BY:	P.W.K.
DATE:	JULY, 2006
BY:	NO.
REVISION	DATE

**WATER AND SEWER MAINS TITLE SHEET & PLAN**

600' SCALE MAP NO. 17 BLOCK NO. 12  
F.C.C. WORK ORDER NO. 05091  
FILE NAME: WATER AND SEWER MAINS TITLE & PLAN SHEET



TYPE OF BUILDING:	RESIDENTIAL - SINGLE FAMILY DETACHED
NUMBER OF LOTS:	9 (8 BUILDABLE)
NO. OF WATER HOUSE CONNECTIONS:	8
NO. OF SEWER HOUSE CONNECTIONS:	8
DRAINAGE AREA:	PATAPSCO
TREATMENT PLANT:	PATAPSCO WASTEWATER TREATMENT PLANT, CITY OF BALTIMORE

<b>VICINITY MAP</b>	PLAN REFERENCE NUMBERS: FO6-105
---------------------	------------------------------------

SCALE: 1" = 600'

**BENCHMARK INFORMATION**

B.M. #1 - HOWARD COUNTY CONTROL STATION 177A  
N 534,949.381  
E 1,364,626.778  
ELEV = 476.64

B.M. #2 - HOWARD COUNTY CONTROL STATION 177F  
N 595,829.6355  
E 1,363,000.366  
ELEV = 469.29

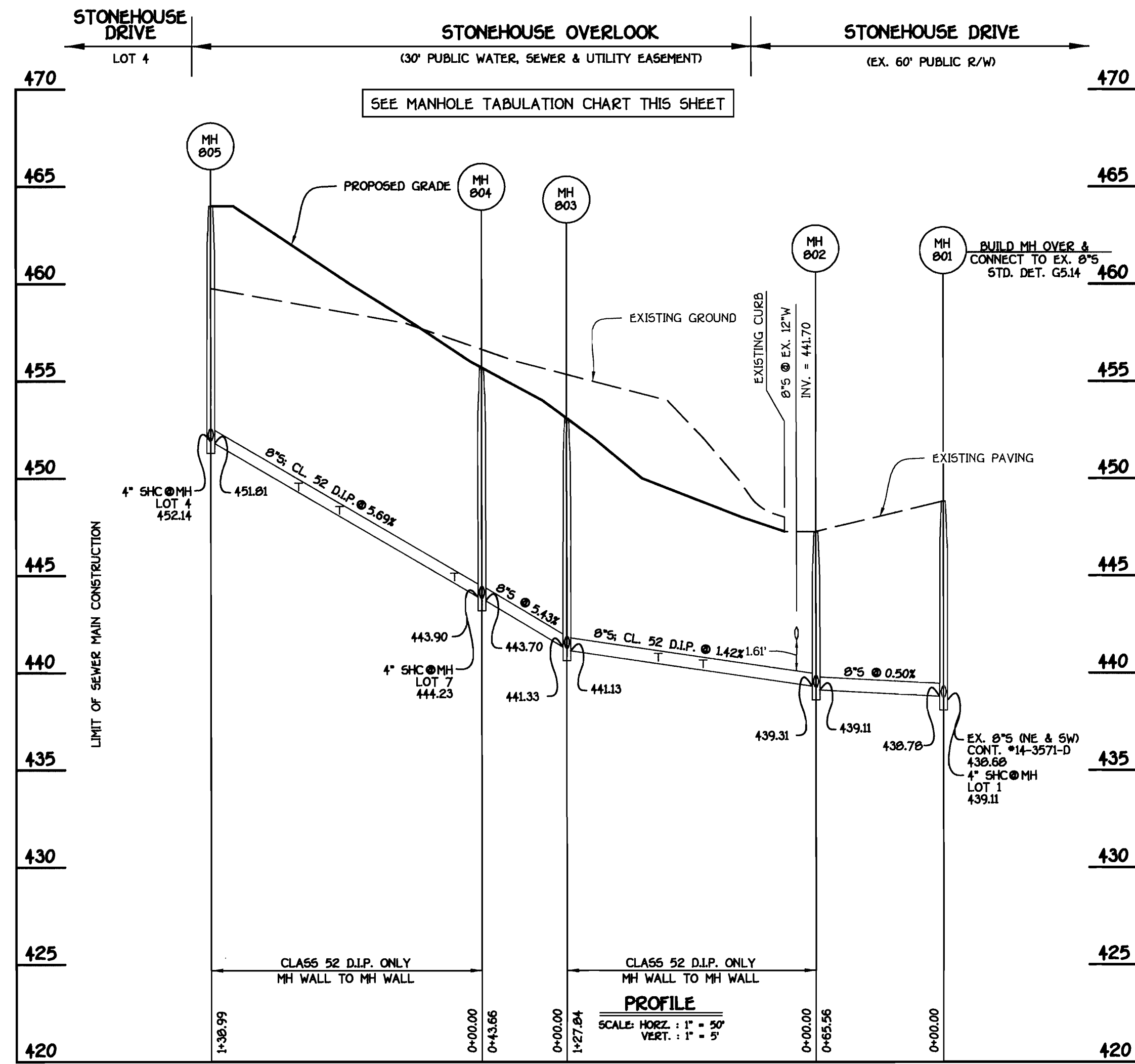
**GENERAL NOTES**

- PART I**
- APPROXIMATE LOCATIONS OF EXISTING MAINS ARE SHOWN. THE CONTRACTOR SHALL TAKE ALL NECESSARY PRECAUTIONS TO PROTECT EXISTING MAINS AND SERVICES AND MAINTAIN UNINTERRUPTED SERVICE. ANY DAMAGE INCURRED SHALL BE REPAIRED IMMEDIATELY TO THE SATISFACTION OF THE ENGINEER AT THE CONTRACTOR'S EXPENSE.
  - TOPOGRAPHIC FIELD SURVEYS WERE PERFORMED ON OR ABOUT JANUARY, 2006 BY FISHER, COLLINS & CARTER, INC.
  - HORIZONTAL AND VERTICAL CONTROLS:  
THE COORDINATES SHOWN ON THE DRAWINGS ARE BASED ON MARYLAND STATE REFERENCE SYSTEM NAD '83/91' AS PROJECTED BY HOWARD COUNTY GEODETIC CONTROL STATIONS NO. 177A & NO. 177F. SEE THIS SHEET FOR BENCHMARK INFORMATION. ALL VERTICAL CONTROLS ARE BASED ON NAVD '83. VERTICAL CONTROLS ARE BASED ON TRAVERSE POINT NO. 8000; A REBAR & CAP SET IN THE ISLAND ALONG PATAPSCO VALLEY DRIVE; ELEV. 463.98
  - ALL PIPE ELEVATIONS SHOWN ARE INVERT ELEVATIONS UNLESS OTHERWISE NOTED ON THE PLANS.
  - CLEAR ALL UTILITIES BY A MINIMUM OF 12 INCHES. CLEAR ALL POLES BY 5'-0" MINIMUM OR TUNNEL AS REQUIRED UNLESS OTHERWISE NOTED. THE OWNER HAS CONTACTED THE UTILITY COMPANIES AND HAS MADE ARRANGEMENTS FOR BRACING OF POLES AS SHOWN ON THE DRAWINGS. IN THE EVENT THE CONTRACTOR'S WORK REQUIRES BRACING OF ADDITIONAL POLES, ANY COST INCURRED BY THE OWNER FOR THE BRACING OF THE ADDITIONAL POLES OR DAMAGES SHALL BE DEDUCTED FROM MONIES OWED THE CONTRACTOR. THE CONTRACTOR SHALL COORDINATE WITH THE UTILITY COMPANIES TO SCHEDULE THE BRACING OF THE POLES.
  - FOR DETAILS NOT SHOWN ON THE DRAWINGS, AND FOR MATERIALS AND CONSTRUCTION METHODS, USE HOWARD COUNTY DESIGN MANUAL, VOLUME IV, STANDARD SPECIFICATIONS AND DETAILS FOR CONSTRUCTION LATEST EDITION. THE CONTRACTOR SHALL HAVE A COPY OF VOLUME IV ON THE JOB SITE.
  - WHERE TEST PITS HAVE BEEN MADE ON EXISTING UTILITIES, THEY ARE NOTED BY THE SYMBOL (P) AT THE LOCATIONS OF THE TEST PITS. A NOTE OR NOTES CONTAINING THE RESULTS OF THE TEST PIT OR PITS IS INCLUDED ON THE DRAWINGS. EXISTING UTILITIES IN THE VICINITY OF THE PROPOSED WORK FOR WHICH TEST PITS HAVE NOT BEEN DUG SHALL BE LOCATED BY THE CONTRACTOR TWO WEEKS IN ADVANCE OF CONSTRUCTION OPERATIONS AT HIS OWN EXPENSE.
  - THE CONTRACTOR SHALL NOTIFY THE FOLLOWING UTILITY COMPANIES OR AGENCIES AT LEAST FIVE WORKING DAYS BEFORE STARTING WORK SHOWN ON THESE PLANS:  
AT&T . . . . . 1-800-252-1133  
BGE (CONSTRUCTION SERVICES) . . . . . 410-850-4620  
BGE (EMERGENCY) . . . . . 410-695-1400  
BUREAU OF UTILITIES . . . . . 410-313-4900  
COLOMBIA PIPELINE CO . . . . . 410-795-1390  
MISS UTILITY . . . . . 1-800-257-7777  
STATE HIGHWAY ADMINISTRATION . . . . . 410-531-5533  
VERIZON . . . . . 1-800-743-0033/410-224-9210
  - TREES AND SHRUBS ARE TO BE PROTECTED FROM DAMAGE TO THE MAXIMUM EXTENT. TREES AND SHRUBS LOCATED WITHIN THE CONSTRUCTION STRIP ARE NOT TO BE REMOVED OR DAMAGED BY THE CONTRACTOR.
  - CONTRACTOR SHALL REMOVE TREES, STUMPS AND ROOTS ALONG THE LINE OF EXCAVATION. PAYMENT FOR SUCH REMOVAL SHALL BE INCLUDED IN THE UNIT PRICE BID FOR THE CONSTRUCTION OF THE MAIN.
  - THE CONTRACTOR SHALL NOTIFY THE BUREAU OF HIGHWAYS, HOWARD COUNTY, AT (410)-313-7450 AT LEAST FIVE WORKING DAYS BEFORE OPEN CUTTING OR BORING/JACKING OF ANY COUNTY ROAD FOR LAYING WATER/SEWER MAINS OR HOUSE CONNECTIONS. THE APPROVAL OF THESE DRAWINGS WILL CONSTITUTE COMPLIANCE WITH DPW REQUIREMENTS PER SECTION 18.11.4(a) OF THE HOWARD COUNTY CODE.
- PART II: WATER**
- ALL WATER MAINS SHALL BE D.I.P. CLASS 52 UNLESS OTHERWISE NOTED.
  - TOPS OF ALL WATER MAINS SHALL HAVE A MINIMUM OF 3'-6" OF COVER UNLESS OTHERWISE NOTED.
  - VALVES ADJACENT TO TREES SHALL BE STRAPPED TO TREES.
  - ALL FITTINGS SHALL BE BUTTRESSED OR ANCHORED WITH CONCRETE IN ACCORDANCE WITH STANDARD DETAILS UNLESS OTHERWISE PROVIDED FOR ON THE DRAWINGS.
  - FIRE HYDRANTS SHALL BE SET TO THE BURY LINE ELEVATIONS SHOWN ON THE DRAWINGS. ALL FIRE HYDRANTS SHALL BE INSTALLED IN ACCORDANCE WITH STANDARD DETAILS. THE SOIL AROUND THE FIRE HYDRANT SHALL BE COMPACTED IN ACCORDANCE WITH SECTION 1000 AND SECTION 1005 OF THE STANDARD SPECIFICATIONS.
  - THE CONTRACTOR SHALL NOT OPERATE ANY WATER MAIN VALVES ON THE EXISTING WATER SYSTEM.
- PART III: SEWER**
- ALL SEWER MAINS SHALL BE D.I.P. OR P.V.C. UNLESS OTHERWISE NOTED.
  - ALL MANHOLES SHALL BE 4'-0" INSIDE DIAMETER UNLESS OTHERWISE NOTED.
  - FORCE MAINS SHALL BE D.I.P. ONLY.
  - MANHOLES SHOWN WITH 12" AND 16" WALLS ARE FOR BRICK MANHOLES ONLY.
  - MANHOLES DESIGNATED W.T. IN PLAN AND PROFILE SHALL HAVE WATERTIGHT FRAME AND COVER, STANDARD DETAIL C5.52. WHERE WATERTIGHT MANHOLE FRAMES AND COVERS ARE USED, SET TOP OF FRAME 1'-6" ABOVE FINISHED GRADE UNLESS OTHERWISE NOTED ON THE DRAWINGS.
  - HOUSES WITH THE SYMBOL "C.N.S." INDICATES THAT THE CELLAR CANNOT BE SERVED.

SEE SHEET 3 FOR EROSION & SEDIMENT CONTROL PLAN

**STONEHOUSE OVERLOOK**  
LOTS 1 THRU 8 AND OPEN SPACE LOT 9  
CONTRACT NO. 14-4371-D  
SECOND ELECTION DISTRICT  
HOWARD COUNTY, MARYLAND

SCALE AS SHOWN  
SHEET 1 OF 3

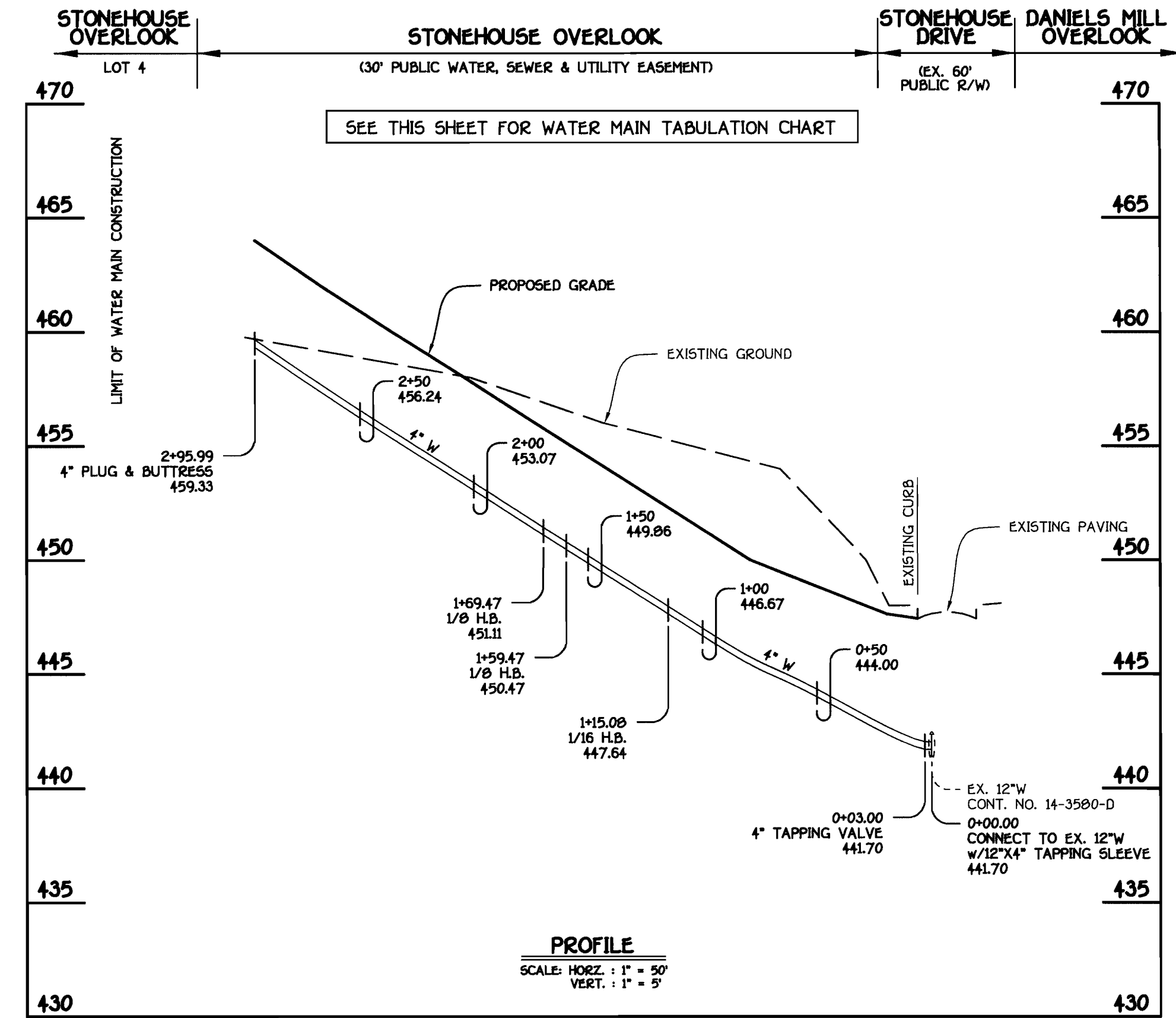


**8" SEWER MAIN: LOTS 1 THRU 8**

SHC INVERT @ PROPERTY LINE CHART		
STATION	LOT	ELEVATION
MH 801 TO MH 802		
① MH 801 RT.	1	439.81
MH 802 TO MH 803		
0+50 RT.	2	440.40
0+81 LT.	8	441.03
MH 804 TO MH 805		
① MH 804 LT.	7	444.61
0+14 LT.	6	445.27
0+73 LT.	5	448.62
0+94 RT.	3	449.62
① MH 805 LT.	4	452.54

MANHOLE TABULATION CHART			
NO.	NORTHING	EASTING	RIM ELEVATION
801	595544.60	1364455.06	448.83*
802	595489.47	1364490.54	447.26*
803	595419.31	1364383.67	453.10**
804	595382.23	1364360.60	455.70**
805	595455.67	1364242.60	464.00**

NOTES: 1. \*SET MH RIMS FLUSH W/ EXISTING PAVING.  
2. \*\*SET MH RIMS FLUSH W/ PROPOSED FINISHED GRADE.



**4" WATER MAIN: LOTS 2 THRU 8**

WATER MAIN TABULATION CHART			
W.M. STA.	APPURTENANCE	NORTHING	EASTING
4" WATER MAIN			
0+00.00	12"x4" TAPPING SLEEVE	595475.31	1364487.20
0+03.00	4" TAPPING VALVE	595473.66	1364484.69
1+15.00	1/16 H.B.	595412.15	1364391.00
1+59.47	1/8 H.B.	595374.46	1364367.55
1+69.47	1/8 H.B.	595372.20	1364357.81
2+95.99	4" PLUG & BUTTRESS	595439.04	1364250.39

CONTRACT NO. 14-4371-D  
STONEHOUSE OVERLOOK  
LOTS 1 THRU 8 AND OPEN  
SPACE LOT 9  
WATER AND SEWER MAIN EXTENSIONS  
HOWARD COUNTY, MARYLAND

DEPARTMENT OF PUBLIC WORKS  
HOWARD COUNTY, MARYLAND

DEPARTMENT OF PLANNING AND ZONING  
HOWARD COUNTY, MARYLAND

FISHER, COLLINS & CARTER, INC.  
CIVIL ENGINEERING CONSULTANTS & LAND SURVEYORS  
CORPORAL SQUARE OFFICE PARK - 10272 BALTIMORE NATIONAL PIKE  
ELLSWORTH CITY, MARYLAND 21042  
(410) 461-2055



DESIGNED BY: B.C.R.  
DRAWN BY: B.C.R.  
CHECKED BY: P.W.K.  
DATE: JULY, 2006

WATER AND SEWER MAINS  
PROFILES

600' SCALE MAP NO. 17 BLOCK NO. 12  
F.C.C. WORK ORDER NO. 09091  
FILE NAME: WATER AND SEWER MAINS PROFILE SHEET

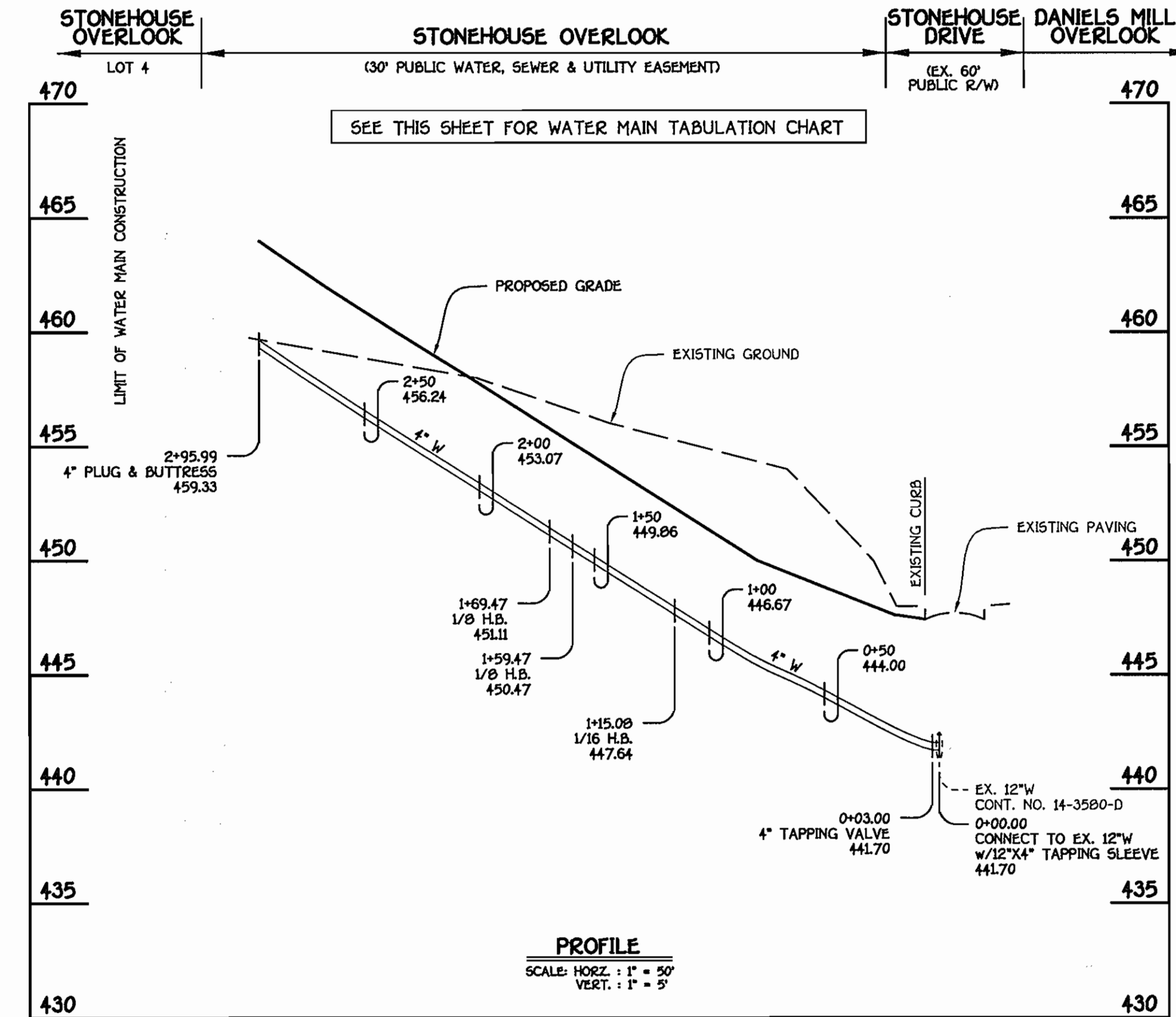
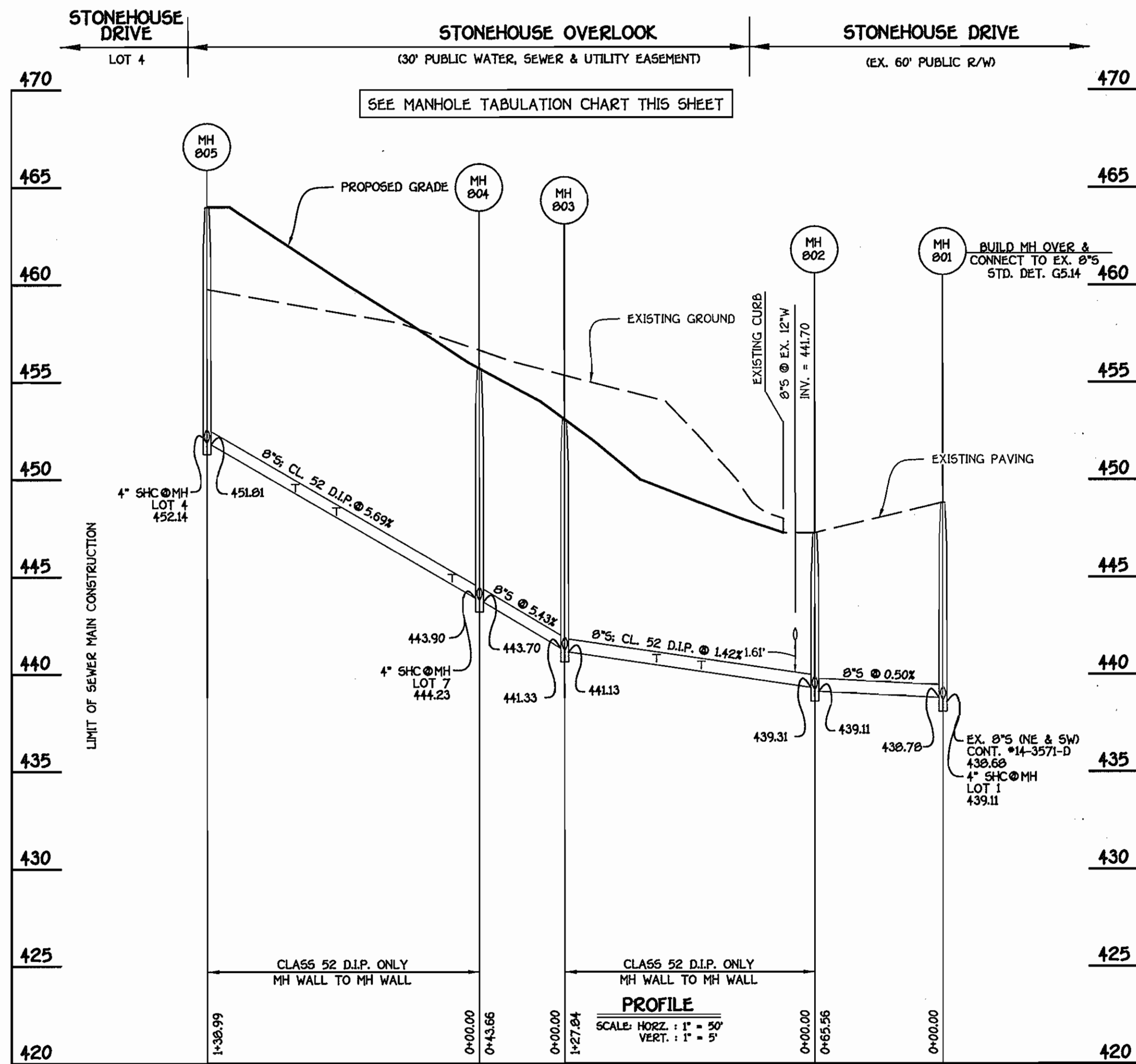
**STONEHOUSE OVERLOOK**  
LOTS 1 THRU 8 AND OPEN SPACE LOT 9  
CONTRACT NO. 14-4371-D  
SECOND ELECTION DISTRICT  
HOWARD COUNTY, MARYLAND

SCALE  
AS  
SHOWN

SHEET  
2 of 3







**WATER MAIN TABULATION CHART**

W.M. STA.	APPURTENANCE	NORTHING	EASTING
4" WATER MAIN			
0+00.00	12"X4" TAPPING SLEEVE	595475.31	1364487.20
0+03.00	4" TAPPING VALVE	595473.66	1364484.69
1+15.08	1/16 H.B.	595412.15	1364391.00
1+59.47	1/8 H.B.	595374.46	1364367.55
1+69.47	1/8 H.B.	595372.20	1364357.81
2+95.99	4" PLUG & BUTTRESS	595439.04	1364250.39

**SHC INVERT @ PROPERTY LINE CHART**

STATION	LOT	ELEVATION
MH 801 TO MH 802		
©MH 801 RT.	1	439.81
MH 802 TO MH 803		
0+58 RT.	2	440.40
0+81 LT.	8	441.03
MH 804 TO MH 805		
©MH 804 LT.	7	444.61
0+14 LT.	6	445.27
0+73 LT.	5	448.62
0+94 RT.	3	449.62
©MH 805 LT.	4	452.54

**MANHOLE TABULATION CHART**

NO.	NORTHING	EASTING	RIM ELEVATION
801	595544.60	1364455.06	448.83*
802	595489.47	1364490.54	447.26*
803	595419.31	1364383.67	453.10**
804	595382.23	1364360.60	455.70**
805	595455.67	1364242.60	464.00**

NOTES: 1. \*GET MH RIMS FLUSH W/ EXISTING PAVING.  
2. \*\*GET MH RIMS FLUSH W/ PROPOSED FINISHED GRADE.

CONTRACT NO. 14-4371-D  
STONEHOUSE OVERLOOK  
LOTS 1 THRU 8 AND OPEN  
SPACE LOT 9  
WATER AND SEWER MAIN EXTENSIONS  
HOWARD COUNTY, MARYLAND

DEPARTMENT OF PUBLIC WORKS  
HOWARD COUNTY, MARYLAND

*[Signature]*  
7/18/06  
DATE

DEPARTMENT OF PLANNING AND ZONING  
HOWARD COUNTY, MARYLAND

*[Signature]*  
7/20/06  
DATE

**FISHER, COLLINS & CARTER, INC.**  
CIVIL ENGINEERING CONSULTANTS & LAND SURVEYORS  
CONTINENTAL SQUARE OFFICE PARK - 10272 BALTIMORE NATIONAL PIKE  
ELICOTT CITY, MARYLAND 21042  
(410) 461-2995



DESIGNED BY: B.C.R.  
DRAWN BY: B.C.R.  
CHECKED BY: P.W.K.  
DATE: JULY, 2006

**WATER AND SEWER MAINS PROFILES**

600' SCALE MAP NO. 17 BLOCK NO. 12  
F.C.C. WORK ORDER NO. 05091  
DATE: FILE NAME: WATER AND SEWER MAINS PROFILE SHEET

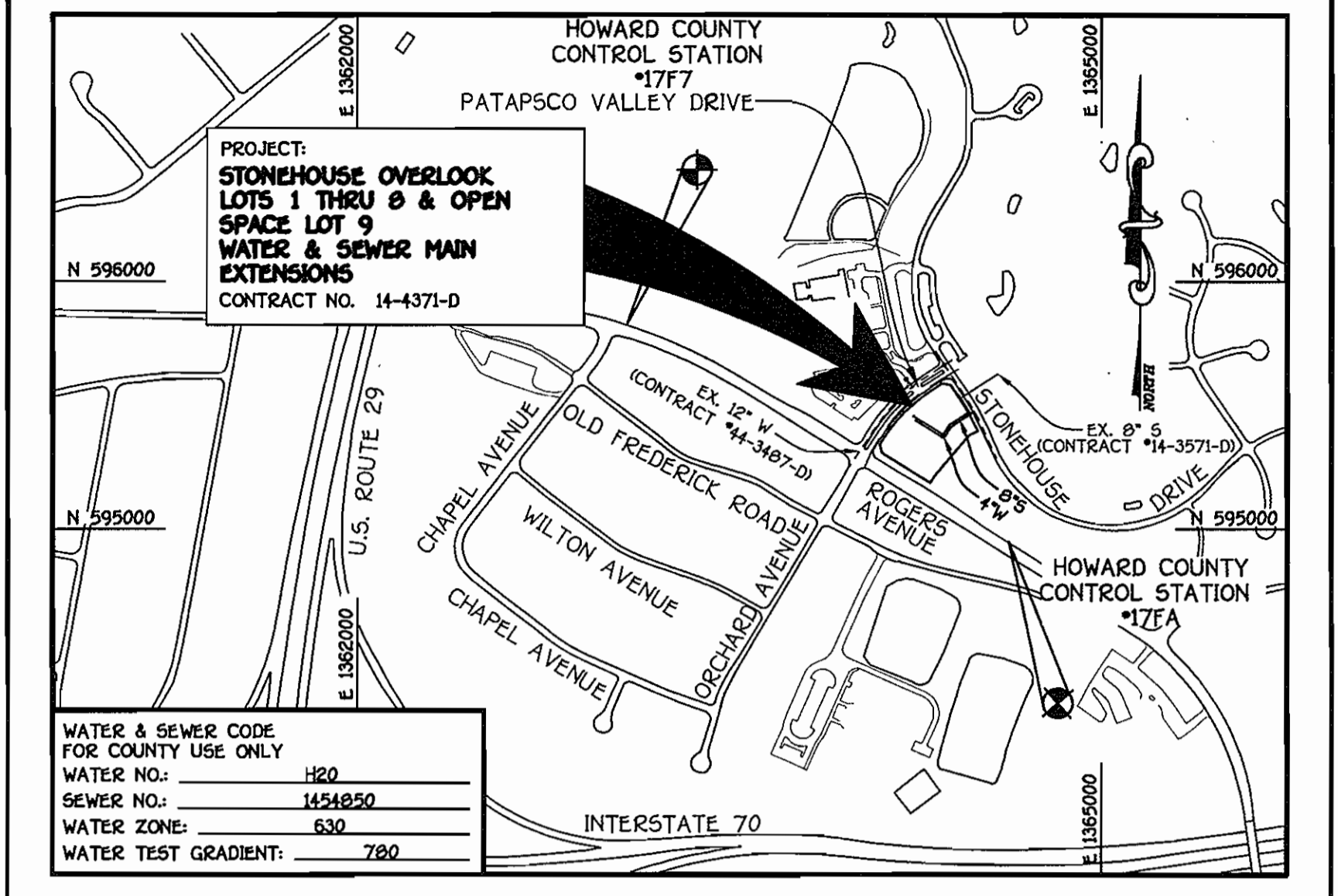
**STONEHOUSE OVERLOOK**  
LOTS 1 THRU 8 AND OPEN SPACE LOT 9  
CONTRACT NO. 14-4371-D  
SECOND ELECTION DISTRICT  
HOWARD COUNTY, MARYLAND

SCALE AS SHOWN  
SHEET 2 OF 3

I:\05091\05091\05091 W&S BASE PLAN.dwg, 6/30/2006 11:44:43 AM, 1:1

QUANTITIES				
ITEM	ESTIMATED	AS-BUILT		
		QUANTITIES	TYPE	SUPPLIER
8" CL. 52 D.I.P.	267 L.F.	267	TOTON	GRIFFIN
8" SEWER	110 L.F.	110	SDR-35	J.M. MANUF.
4" SEWER	154 L.F.	154	SDR-35	J.M. MANUF.
MANHOLES	5 EACH	5	CL-52	ATLANTIC
4" WATER	296 L.F.	296	CL-52	GRIFFIN
1" WATER	123 L.F.	123	R-COPPER	CAMBRIDGE
4" TAPPING VALVE	1 EACH	1	KEWENEY	TAPVAL.
12"x4" TAPPING SLEEVE	1 EACH	1	STAINLESS STEEL	FORD
1/8 H.B.	2 EACH	2	MJ BEND	SIGMA
1/16 H.B.	1 EACH	1	MJ BEND	SIGMA
4" PLUG & BUTTRESS	1 EACH	1	MJ CAP	SIGMA

NAME OF UTILITY CONTRACTOR: GAINES & COMPANY INC.  
SURVEY & DRAFTING DIVISION AS-BUILT DATE: 2/07

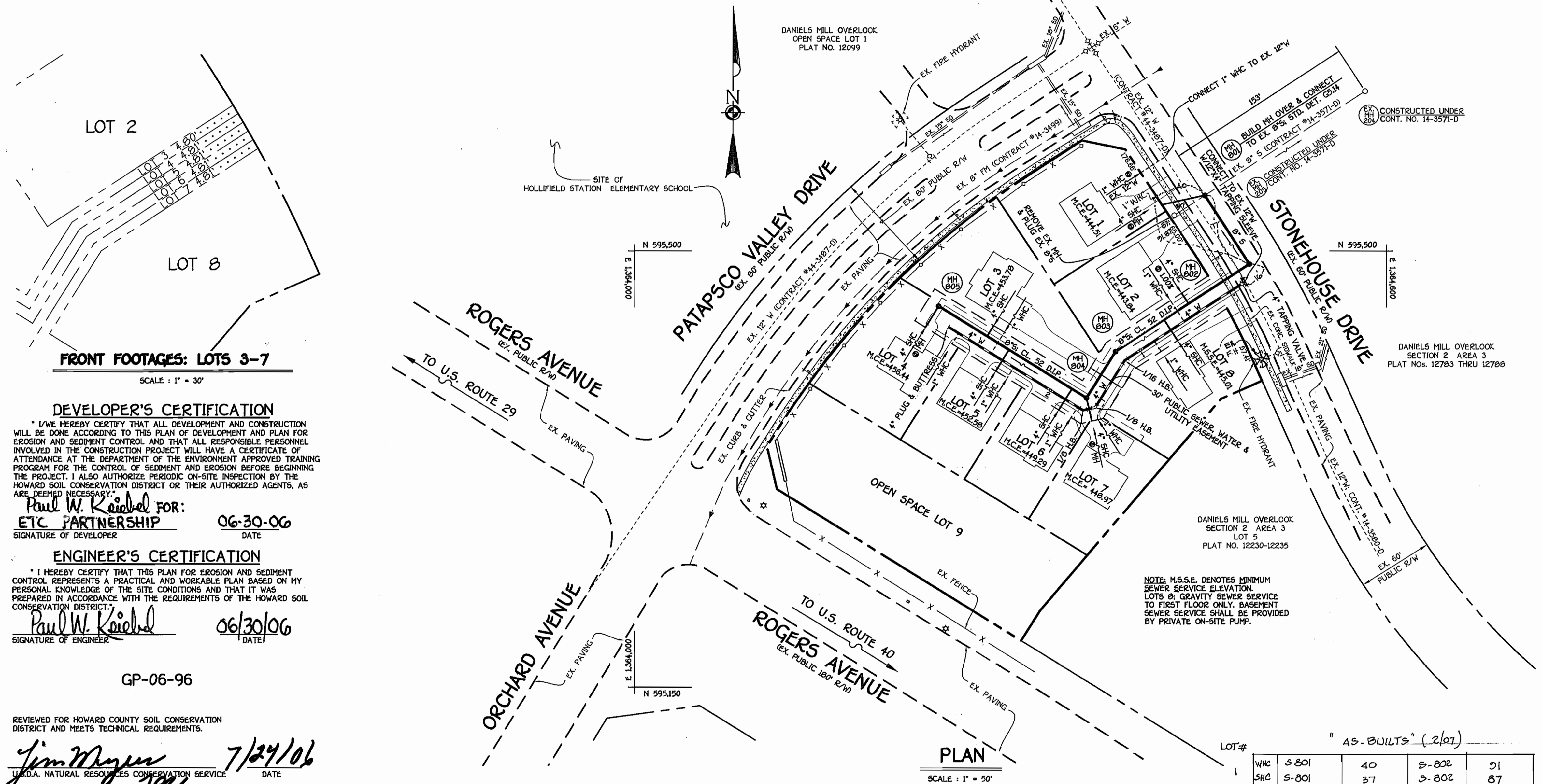


WATER & SEWER CODE FOR COUNTY USE ONLY	
WATER NO.:	H20
SEWER NO.:	1454820
WATER ZONE:	630
WATER TEST GRADIENT:	780

TYPE OF BUILDING: RESIDENTIAL - SINGLE FAMILY DETACHED	
NUMBER OF LOTS:	9 (8 BUILDABLE)
NO. OF WATER HOUSE CONNECTIONS:	8
NO. OF SEWER HOUSE CONNECTIONS:	8
DRAINAGE AREA:	PATAPSCO
TREATMENT PLANT:	PATAPSCO WASTEWATER TREATMENT PLANT, CITY OF BALTIMORE

### GENERAL NOTES

- PART I**
- APPROXIMATE LOCATIONS OF EXISTING MAINS ARE SHOWN. THE CONTRACTOR SHALL TAKE ALL NECESSARY PRECAUTIONS TO PROTECT EXISTING MAINS AND SERVICES AND MAINTAIN UNINTERRUPTED SERVICE. ANY DAMAGE INCURRED SHALL BE REPAIRED IMMEDIATELY TO THE SATISFACTION OF THE ENGINEER AT THE CONTRACTOR'S EXPENSE.
  - TOPOGRAPHIC FIELD SURVEYS WERE PERFORMED ON OR ABOUT JANUARY, 2006 BY FISHER, COLLINS & CARTER, INC.
  - HORIZONTAL AND VERTICAL CONTROLS: THE COORDINATES SHOWN ON THE DRAWINGS ARE BASED ON MARYLAND STATE REFERENCE SYSTEM NAD '83/91' AS PROJECTED BY HOWARD COUNTY GEODETIC CONTROL STATIONS NO. 177A & NO. 1777. SEE THIS SHEET FOR BENCHMARK INFORMATION. ALL VERTICAL CONTROLS ARE BASED ON NAVD '83. VERTICAL CONTROLS ARE BASED ON TRAVERSE POINT NO. 8001: A REBAR & CAP SET IN THE ISLAND ALONG PATAPSCO VALLEY DRIVE; ELEV. 463.90
  - ALL PIPE ELEVATIONS SHOWN ARE INVERT ELEVATIONS UNLESS OTHERWISE NOTED ON THE PLANS.
  - CLEAR ALL UTILITIES BY A MINIMUM OF 12 INCHES. CLEAR ALL POLES BY 5'-0" MINIMUM OR TUNNEL AS REQUIRED UNLESS OTHERWISE NOTED. THE OWNER HAS CONTACTED THE UTILITY COMPANIES AND HAS MADE ARRANGEMENTS FOR BRACING OF POLES AS SHOWN ON THE DRAWINGS. IN THE EVENT THE CONTRACTOR'S WORK REQUIRES BRACING OF ADDITIONAL POLES, ANY COST INCURRED BY THE OWNER FOR THE BRACING OF THE ADDITIONAL POLES OR DAMAGES SHALL BE DEDUCTED FROM MONIES OWED THE CONTRACTOR. THE CONTRACTOR SHALL COORDINATE WITH THE UTILITY COMPANIES TO SCHEDULE THE BRACING OF THE POLES.
  - FOR DETAILS NOT SHOWN ON THE DRAWINGS, AND FOR MATERIALS AND CONSTRUCTION METHODS, USE HOWARD COUNTY DESIGN MANUAL, VOLUME IV, STANDARD SPECIFICATIONS AND DETAILS FOR CONSTRUCTION (LATEST EDITION). THE CONTRACTOR SHALL HAVE A COPY OF VOLUME IV ON THE JOB SITE.
  - WHERE TEST PITS HAVE BEEN MADE ON EXISTING UTILITIES, THEY ARE NOTED BY THE SYMBOL (P) AT THE LOCATIONS OF THE TEST PITS. A NOTE OR NOTES CONTAINING THE RESULTS OF THE TEST PIT OR PITS IS INCLUDED ON THE DRAWINGS. EXISTING UTILITIES IN THE VICINITY OF THE PROPOSED WORK FOR WHICH TEST PITS HAVE NOT BEEN DUG SHALL BE LOCATED BY THE CONTRACTOR TWO WEEKS IN ADVANCE OF CONSTRUCTION OPERATIONS AT HIS OWN EXPENSE.
  - THE CONTRACTOR SHALL NOTIFY THE FOLLOWING UTILITY COMPANIES OR AGENCIES AT LEAST FIVE WORKING DAYS BEFORE STARTING WORK SHOWN ON THESE PLANS:  
AT&T . . . . . 1-800-252-1133  
BGE (CONSTRUCTION SERVICES) . . . . . 410-850-4620  
BGE (EMERGENCY) . . . . . 410-685-1400  
BUREAU OF UTILITIES . . . . . 410-313-4900  
COLONIAL PIPELINE CO. . . . . 410-795-1390  
MISS UTILITY . . . . . 1-800-257-7777  
STATE HIGHWAY ADMINISTRATION . . . . . 410-531-5533  
VERIZON . . . . . 1-800-743-0033/410-224-9210
  - TREES AND SHRUBS ARE TO BE PROTECTED FROM DAMAGE TO THE MAXIMUM EXTENT. TREES AND SHRUBS LOCATED WITHIN THE CONSTRUCTION STRIP ARE NOT TO BE REMOVED OR DAMAGED BY THE CONTRACTOR.
  - CONTRACTOR SHALL REMOVE TREES, STUMPS AND ROOTS ALONG THE LINE OF EXCAVATION. PAYMENT FOR SUCH REMOVAL SHALL BE INCLUDED IN THE UNIT PRICE BID FOR THE CONSTRUCTION OF THE MAINS.
  - THE CONTRACTOR SHALL NOTIFY THE BUREAU OF HIGHWAYS, HOWARD COUNTY, AT (410)-313-7450 AT LEAST FIVE WORKING DAYS BEFORE OPEN CUTTING OR BORING/JACKING OF ANY COUNTY ROAD FOR LAYING WATER/SEWER MAINS OR HOUSE CONNECTIONS. THE APPROVAL OF THESE DRAWINGS WILL CONSTITUTE COMPLIANCE WITH DPW REQUIREMENTS PER SECTION 18.14(d) OF THE HOWARD COUNTY CODE.
- PART II - WATER**
- ALL WATER MAINS SHALL BE D.I.P. CLASS 52 UNLESS OTHERWISE NOTED.
  - TOPS OF ALL WATER MAINS SHALL HAVE A MINIMUM OF 3'-6" OF COVER UNLESS OTHERWISE NOTED.
  - VALVES ADJACENT TO TEES SHALL BE STRAPPED TO TEES.
  - ALL FITTINGS SHALL BE BUTTRESSED OR ANCHORED WITH CONCRETE IN ACCORDANCE WITH STANDARD DETAILS UNLESS OTHERWISE PROVIDED FOR ON THE DRAWINGS.
  - FIRE HYDRANTS SHALL BE SET TO THE BURY LINE ELEVATIONS SHOWN ON THE DRAWINGS. ALL FIRE HYDRANTS SHALL BE INSTALLED IN ACCORDANCE WITH STANDARD DETAILS. THE SOIL AROUND THE FIRE HYDRANT SHALL BE COMPACTED IN ACCORDANCE WITH SECTION 1009 OF THE STANDARD SPECIFICATIONS.
  - THE CONTRACTOR SHALL NOT OPERATE ANY WATER MAIN VALVES ON THE EXISTING WATER SYSTEM.
- PART III - SEWER**
- ALL SEWER MAINS SHALL BE D.I.P. OR P.V.C. UNLESS OTHERWISE NOTED.
  - ALL MANHOLES SHALL BE 4'-0" INSIDE DIAMETER UNLESS OTHERWISE NOTED.
  - FORCE MAINS SHALL BE D.I.P. ONLY.
  - MANHOLES SHOWN WITH 12" AND 16" WALLS ARE FOR BRICK MANHOLES ONLY.
  - MANHOLES DESIGNATED W.T. IN PLAN AND PROFILE SHALL HAVE WATER-TIGHT FRAME AND COVER, STANDARD DETAIL G5.52 WHERE WATER-TIGHT MANHOLE FRAMES AND COVERS ARE USED, SET TOP OF FRAME 1'-6" ABOVE FINISHED GRADE UNLESS OTHERWISE NOTED ON THE DRAWINGS.
  - HOUSE(S) WITH THE SYMBOL "C.N.S." INDICATES THAT THE CELLAR CANNOT BE SERVED.



**DEVELOPER'S CERTIFICATION**

I/WE HEREBY CERTIFY THAT ALL DEVELOPMENT AND CONSTRUCTION WILL BE DONE ACCORDING TO THIS PLAN OF DEVELOPMENT AND PLAN FOR EROSION AND SEDIMENT CONTROL AND THAT ALL RESPONSIBLE PERSONNEL INVOLVED IN THE CONSTRUCTION PROJECT WILL HAVE A CERTIFICATE OF ATTENDANCE AT THE DEPARTMENT OF THE ENVIRONMENT APPROVED TRAINING PROGRAM FOR THE CONTROL OF SEDIMENT AND EROSION BEFORE BEGINNING THE PROJECT. I ALSO AUTHORIZE PERIODIC ON-SITE INSPECTION BY THE HOWARD SOIL CONSERVATION DISTRICT OR THEIR AUTHORIZED AGENTS, AS ARE DEEMED NECESSARY.

Paul W. Koebel FOR:  
ETC PARTNERSHIP 06-30-06  
SIGNATURE OF DEVELOPER DATE

**ENGINEER'S CERTIFICATION**

I HEREBY CERTIFY THAT THIS PLAN FOR EROSION AND SEDIMENT CONTROL REPRESENTS A PRACTICAL AND WORKABLE PLAN BASED ON MY PERSONAL KNOWLEDGE OF THE SITE CONDITIONS AND THAT IT WAS PREPARED IN ACCORDANCE WITH THE REQUIREMENTS OF THE HOWARD SOIL CONSERVATION DISTRICT.

Paul W. Koebel 06/30/06  
SIGNATURE OF ENGINEER DATE

GP-06-96

REVIEWED FOR HOWARD COUNTY SOIL CONSERVATION DISTRICT AND MEETS TECHNICAL REQUIREMENTS.

Jim Meyer 7/24/06  
UTLIDA, NATURAL RESOURCES CONSERVATION SERVICE DATE

THIS DEVELOPMENT IS APPROVED FOR EROSION AND SEDIMENT CONTROL BY HOWARD SOIL CONSERVATION DISTRICT.

APPROVED: John K. Kuntz 7/24/06  
HOWARD SOIL CONSERVATION DISTRICT DATE

SEDIMENT CONTROL MEASURES FOR THIS CONTRACT WILL BE IMPLEMENTED IN ACCORDANCE WITH SECTION 219 OF THE HOWARD COUNTY DESIGN MANUAL & STANDARDS AND SPECIFICATIONS FOR SOIL EROSION AND SEDIMENT CONTROL IN DEVELOPING AREAS AND AS SHOWN ON THESE PLANS.

Paul W. Koebel FOR:  
ETC PARTNERSHIP 06-30-06  
SIGNATURE OF DEVELOPER DATE

SEE SHEET 3 FOR EROSION & SEDIMENT CONTROL PLAN

PLAN SCALE: 1" = 50'

LOT #	AS-BUILTS (2/07)			
1	WHC S-801	40	S-802	51
	SHC S-801	37	S-802	87
2	WHC S-802	68	F.H.	94
	SHC S-802	58	F.H.	82
3	WHC S-803	55	S-804	83
	SHC S-803	46	S-804	93
4	WHC S-803	33	S-804	116
	SHC S-803	21	S-804	130
5	WHC S-803	79	S-804	65
	SHC S-803	68	S-804	75
6	WHC S-803	63	S-804	18
	SHC S-803	64	S-804	23
7	WHC S-803	56	S-804	20
	SHC S-803	60	S-804	18
8	WHC S-802	77	S-803	37
	SHC S-802	85	S-803	51

DEPARTMENT OF PUBLIC WORKS HOWARD COUNTY, MARYLAND	DEPARTMENT OF PLANNING AND ZONING HOWARD COUNTY, MARYLAND	FISHER, COLLINS & CARTER, INC. CIVIL, ENGINEERING, CONSULTANTS & LAND SURVEYORS CENTRAL SQUARE OFFICE PARK - 10272 BALTIMORE NATIONAL PIKE ELICOTT CITY, MARYLAND 21042 (410) 461-2095	DESIGNED BY: B.C.R. DRAWN BY: B.C.R. CHECKED BY: P.W.K. DATE: JULY, 2006	STATE OF MARYLAND PROFESSIONAL ENGINEER TERRELL A. FISHER	WATER AND SEWER MAINS TITLE SHEET & PLAN	60' SCALE MAP NO. 17 - BLOCK NO. 12 F.C.C. WORK ORDER NO. 05091	STONEHOUSE OVERLOOK LOTS 1 THRU 8 AND OPEN SPACE LOT 9 CONTRACT NO. 14-4371-D SECOND ELECTION DISTRICT HOWARD COUNTY, MARYLAND	SCALE AS SHOWN SHEET 1 OF 3
---	--	--	---	---	---	--	--	--------------------------------