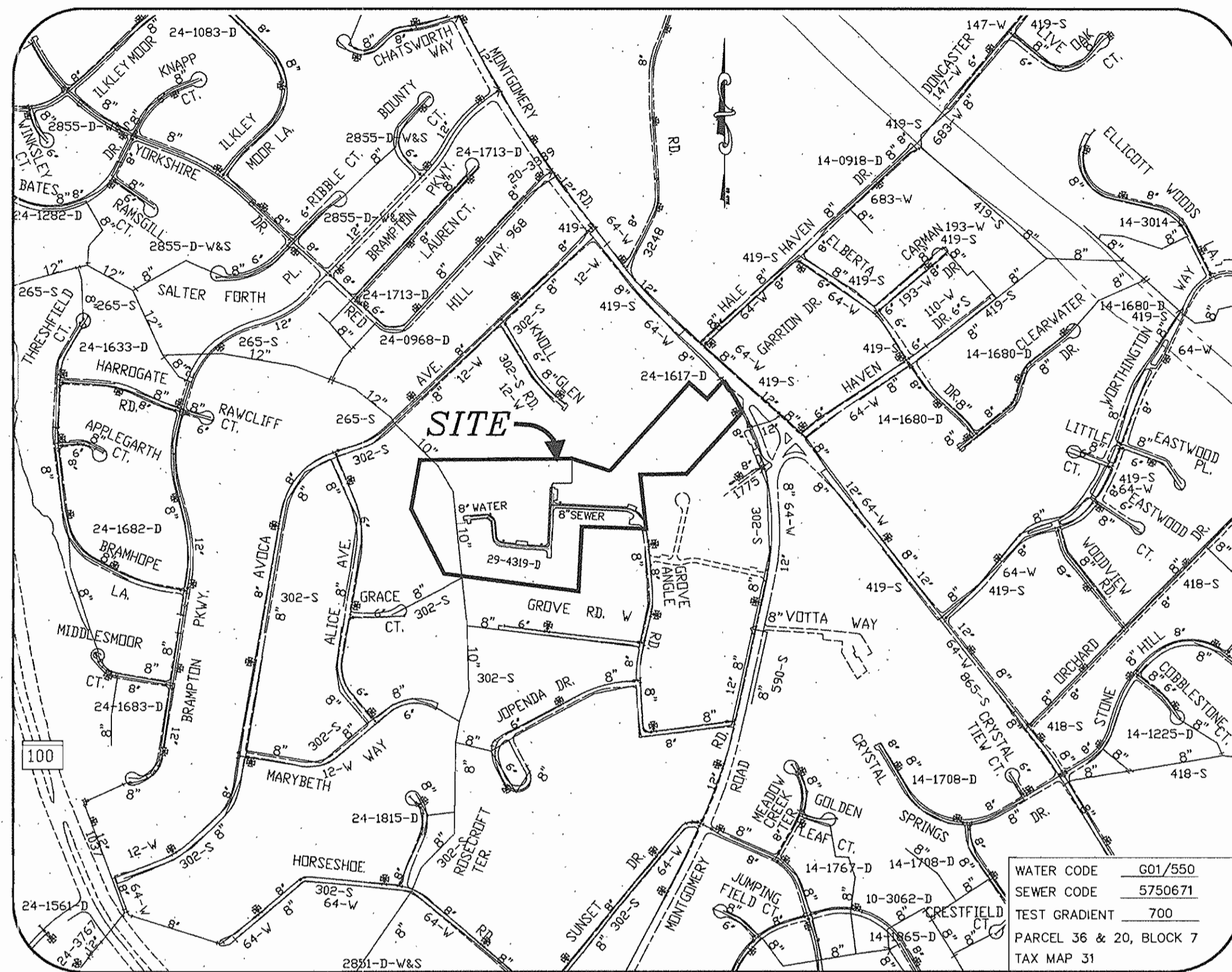


QUANTITY TABLE

ITEMS	QUANTITIES ESTIMATED	QUANTITIES	TYPE	MANUFACTURER/SUPPLIER
STANDARD WATER TIGHT MH (HO. CO. STD. G-5.14)	1 EACH			ATLANTIC
STANDARD WATER TIGHT MH (HO. CO. STD. G-5.12)	1 EACH			ATLANTIC
8" SEWER MAIN	10 L.F.	10 L.F.		J.H. MFG.
8" WATER MAIN	1720 L.F.	1750		GRIFFIN
1.5" WATER HOUSE CONNECTION	1310 L.F.	1310		READING
# 1.5" WATER HOUSE CONNECTIONS	61 EACH	61 EA.		READING
8" CAP & BUTTRESS	2 EACH	2 EA.		GRIFFIN
1/8 HB (8")	9 EACH	9 EA.		SIGMA CORP.
1/16 HB (8")	4 EACH	4 EA.		SIGMA CORP.
1/32 HB (8")	2 EACH	2 EA.		SIGMA CORP.
8" X 8" TEE	1 EACH	1 EA.		SIGMA CORP.
8" VALVE	2 EACH	2 EA.		MUELLER
8"x6" FH TEE & 6" VALVE	3 EACH	3 EA.		SIGMA CORP.
NAME OF UTILITY CONTRACTOR: CCS				
SURVEY AND DRAFTING DIVISION AS-BUILT DATE				

PLAN REFERENCE NUMBERS:
SDP-06-030



VICINITY MAP
SCALE 1"=600'

TYPE OF BUILDING SEA
No. OF UNITS 60
No. OF WATER HOUSE CONNECTION 61
No. OF SEWER HOUSE CONNECTIONS 61
DRAINAGE AREA - 108 PS
TREATMENT PLANT - LITTLE PATUXENT WTP

GENERAL NOTES

- APPROXIMATE LOCATIONS OF EXISTING MAINS ARE SHOWN. THE CONTRACTOR SHALL TAKE ALL NECESSARY PRECAUTIONS TO PROTECT EXISTING MAINS AND SERVICES AND MAINTAIN UNINTERRUPTED SERVICE. ANY DAMAGE INCURRED SHALL BE REPAIRED IMMEDIATELY TO THE SATISFACTION OF THE ENGINEER AT THE CONTRACTOR'S EXPENSE.
- TOPOGRAPHY AERIAL SURVEY WAS PERFORMED ON SEPTEMBER 2004 BY WINGS TOPO. BOUNDARY FIELD SURVEY WAS PERFORMED BY MILDENBERG BOENDER AND ASSOCIATES, INC. ON SEPTEMBER 2004.
- HORIZONTAL AND VERTICAL SURVEY CONTROLS:
THE COORDINATES SHOWN ON THE DRAWINGS ARE BASED ON MARYLAND STATE REFERENCE SYSTEM NAD '83/'91 AS PROJECTED BY HOWARD COUNTY GEODETIC CONTROL STATIONS NO. 31A3 AND NO. 31D4. ALL VERTICAL CONTROLS ARE BASED ON NAVD '29. VERTICAL CONTROLS PROVIDED ON THE DRAWINGS ARE GEODETIC CONTROL STATIONS 31A3 AND 31D4.
- CLEAR ALL UTILITIES BY A MINIMUM OF 12 INCHES. CLEAR ALL POLES BY 5'-0" MINIMUM OR TUNNEL AS REQUIRED UNLESS OTHERWISE NOTED. THE OWNER HAS CONTACTED THE UTILITY COMPANIES AND HAS MADE ARRANGEMENTS FOR BRACING OF POLES AS SHOWN ON THE DRAWINGS. IN THE EVENT THE CONTRACTOR'S WORK REQUIRES THE BRACING OF ADDITIONAL POLES, ANY COST INCURRED BY THE OWNER FOR THE BRACING OF ADDITIONAL POLES OR DAMAGES SHALL BE DEDUCTED FROM MONIES OWNED THE CONTRACTOR. THE CONTRACTOR SHALL COORDINATE WITH THE UTILITY COMPANIES TO SCHEDULE THE BRACING OF THE POLES.
- FOR DETAILS NOT SHOWN ON THE DRAWING, AND FOR MATERIALS AND CONSTRUCTION METHODS, USE HOWARD COUNTY DESIGN MANUAL, VOLUME IV, STANDARD SPECIFICATIONS AND DETAILS FOR CONSTRUCTION (LATEST EDITION). THE CONTRACTOR SHALL HAVE A COPY OF VOLUME IV ON THE JOB.
- WHERE TEST PITS HAVE BEEN MADE ON EXISTING UTILITIES, THEY ARE NOTED BY THE SYMBOL [Symbol] AT THE LOCATIONS OF THE TEST PITS. A NOTE OR NOTES CONTAINING THE RESULTS OF THE TEST PIT OR PITS IS INCLUDED ON THE DRAWINGS. EXISTING UTILITIES IN THE VICINITY OF THE PROPOSED WORK FOR WHICH TEST PITS HAVE NOT BEEN DUG SHALL BE LOCATED BY THE CONTRACTOR TWO WEEKS IN ADVANCE OF CONSTRUCTION OPERATIONS AT HIS OWN EXPENSE.
- THE CONTRACTOR SHALL NOTIFY THE FOLLOWING UTILITY COMPANIES OR AGENCIES AT LEAST FIVE WORKING DAYS BEFORE STARTING WORK SHOWN ON THESE PLANS:

AT&T	1-800-252-1133
BGE(CONSTRUCTION SERVICES)	410-850-4620
BGE(EMERGENCY)	410-685-1400
BUREAU OF UTILITIES	410-313-4900
COLONIAL PIPELINE CO.	410-795-1390
MISS UTILITY	1-800-257-7777
STATE HIGHWAY ADMINISTRATION	410-531-5533
VERIZON	1-800-743-0033/410-224-9210

- TREES AND SHRUBS ARE TO BE PROTECTED FROM DAMAGE TO THE MAXIMUM EXTENT. TREES AND SHRUBS LOCATED WITHIN THE CONSTRUCTION STRIP ARE NOT TO BE REMOVED OR DAMAGED BY THE CONTRACTOR.
- THE CONTRACTOR SHALL REMOVE TREES, STUMPS AND ROOTS ALONG THE LINE OF EXCAVATION. PAYMENT FOR SUCH REMOVAL SHALL BE INCLUDED IN THE UNIT PRICE BID FOR CONSTRUCTION OF THE MAIN.
- THE CONTRACTOR SHALL NOTIFY THE BUREAU OF HIGHWAYS, HOWARD COUNTY, AT (410)313-7450 AT LEAST FIVE WORKING DAYS BEFORE OPEN CUTTING OR BORING/JACKING OF ANY COUNTY ROAD FOR LAYING WATER/SEWER MAINS OR HOUSE CONNECTIONS. THE APPROVAL OF THESE DRAWINGS WILL CONSTITUTE COMPLIANCE WITH DPW REQUIREMENTS PER SECTION 18.114(c) OF THE HOWARD COUNTY CODE.

- WATER**
- ALL WATER MAINS SHALL BE D.I.P. CLASS 52 UNLESS OTHERWISE NOTED.
 - TOPS OF ALL WATER MAINS SHALL HAVE A MINIMUM OF 3'-6" OF COVER UNLESS OTHERWISE NOTED.
 - VALVES ADJACENT TO TEES SHALL BE STRAPPED TO TEES.
 - ALL FITTINGS SHALL BE BUTTRESSED OR ANCHORED WITH CONCRETE IN ACCORDANCE WITH STANDARD DETAILS UNLESS OTHERWISE PROVIDED FOR ON THE DRAWINGS.
 - FIRE HYDRANTS SHALL BE SET TO THE BURY LINE ELEVATIONS SHOWN ON THE DRAWINGS. ALL FIRE HYDRANTS SHALL BE INSTALLED IN ACCORDANCE WITH STANDARD DETAILS. THE SOIL AROUND THE FIRE HYDRANT SHALL BE COMPACTED IN ACCORDANCE WITH SECTION 1000 AND SECTION 1005 OF THE STANDARD SPECIFICATIONS.
 - THE CONTRACTOR SHALL NOT OPERATE ANY WATER MAIN VALVES ON THE EXISTING WATER SYSTEM.

- SEWER**
- ALL SEWER MAINS SHALL BE D.I.P. OR P.V.C. UNLESS OTHERWISE NOTED.
 - ALL MANHOLES SHALL BE 4'-0" INSIDE DIAMETER UNLESS OTHERWISE NOTED.
 - FORCE MAINS SHALL BE D.I.P. ONLY.
 - MANHOLES SHOWN WITH 12" AND 16" WALLS ARE FOR BRICK MANHOLES ONLY.
 - MANHOLES DESIGNATED W.T. IN PLAN AND PROFILE SHALL HAVE WATERTIGHT FRAME AND COVER, STANDARD DETAIL G5.52. WHERE WATERTIGHT MANHOLE FRAMES AND COVERS ARE USED, SET TOP OF FRAME 1'-6" ABOVE FINISHED GRADE UNLESS OTHERWISE NOTED ON THE DRAWINGS.
 - HOUSE(S) WITH THE SYMBOL "C.N.S." INDICATES THAT THE CELLAR CANNOT BE SERVED.

NOTE :
ALL UNITS WILL HAVE A 1" OUTSIDE METER SETTING WITH A 1.5" WATER HOUSE CONNECTION.

INDEX OF DRAWINGS

NO.	DESCRIPTION
1	TITLE SHEET
2	WATER AND SEWER PLAN
3	WATER AND SEWER PROFILES

DEVELOPER

LAND DESIGN AND DEVELOPMENT
5300 DORSEY HALL DRIVE, SUITE 102
ELLCOTT CITY MD 21042
(443) 367-0415

CONTRACT NO.: 24-4319-D
HEARTHSTONE OF ELLICOTT MILLS II
PARCELS 20 & 36 - UNITS 1-60
WATER AND SEWER MAIN EXTENSIONS
HOWARD COUNTY, MARYLAND
DEPARTMENT OF PUBLIC WORKS

I/WE CERTIFY THAT ALL DEVELOPMENT AND CONSTRUCTION WILL BE DONE ACCORDING TO THIS PLAN, AND THAT ANY RESPONSIBLE PERSONNEL INVOLVED IN THE CONSTRUCTION PROJECT WILL HAVE A CERTIFICATE OF ATTENDANCE AT A DEPARTMENT OF THE ENVIRONMENT APPROVED TRAINING PROGRAM FOR THE CONTROL OF SEDIMENT AND EROSION BEFORE BEGINNING THE PROJECT. I ALSO AUTHORIZE PERIODIC ON-SITE INSPECTION BY THE HOWARD SOIL CONSERVATION DISTRICT.

Donad R. Penner Jr. 7-24-06
DEVELOPER'S SIGNATURE DATE
DONAD R. PENNER JR.
DEVELOPER'S NAME

I HEREBY CERTIFY THAT THIS PLAN FOR EROSION AND SEDIMENT CONTROL REPRESENTS A PRACTICAL AND WORKABLE PLAN BASED ON MY PERSONAL KNOWLEDGE OF THE SITE CONDITIONS AND THAT IT WAS PREPARED IN ACCORDANCE WITH THE REQUIREMENTS OF THE HOWARD SOIL CONSERVATION DISTRICT.

R. Jacob Hikmat 7/24/06
ENGINEER'S SIGNATURE DATE
R. JACOB HIKMAT
ENGINEER'S NAME

REVIEWED FOR HOWARD SCD AND MEETS TECHNICAL REQUIREMENTS.

Jim Meyer 8/10/06
TDA-NATURAL RESOURCES CONSERVATION SERVICE DATE

THIS DEVELOPMENT PLAN IS APPROVED FOR SOIL EROSION AND SEDIMENT CONTROL BY THE SOIL CONSERVATION DISTRICT. SDP-06-030
John H. Roberts 8/10/06
HOWARD SCD DATE

DEPARTMENT OF PUBLIC WORKS
HOWARD COUNTY, MARYLAND

DEPARTMENT OF PLANNING & ZONING
HOWARD COUNTY, MARYLAND

MILDENBERG, BOENDER & ASSOC., INC.
Engineers Planners Surveyors

5072 Dorsey Hall Drive, Suite 202, Ellicott City, Maryland 21042
(410) 997-0296 Fax: (301) 621-5521 Wash. (410) 997-0296 Fax



engineering	JJO			
illustration	JJO			
approval		Revise no. of WHCs/GHCs in Information Block	10/16/07	
		Revise no. of Units in Information Block	10/16/07	
		Revise Quantities based on revised no. of Units	10/16/07	
		Revise Cont. Title based on revised no. of Units	10/16/07	
project	04-021			
date	JUNE 2006	BY	NO.	REVISION

TITLE SHEET

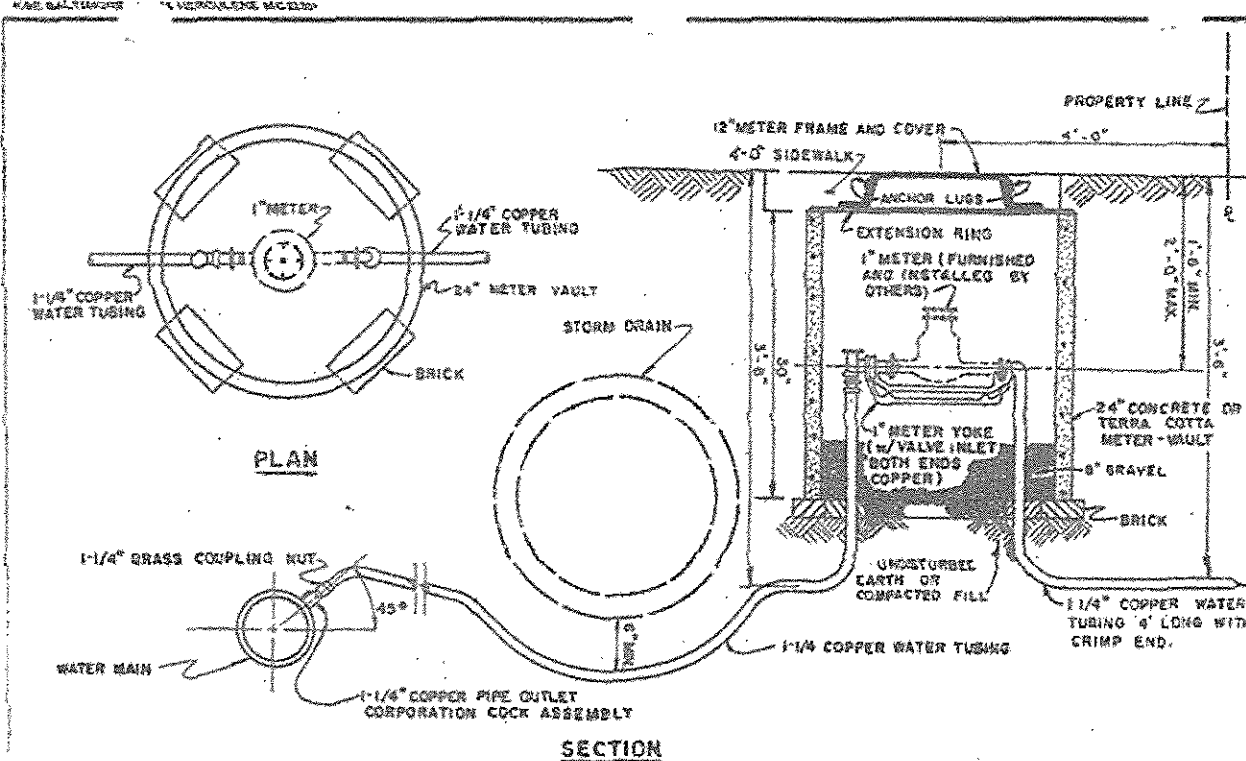
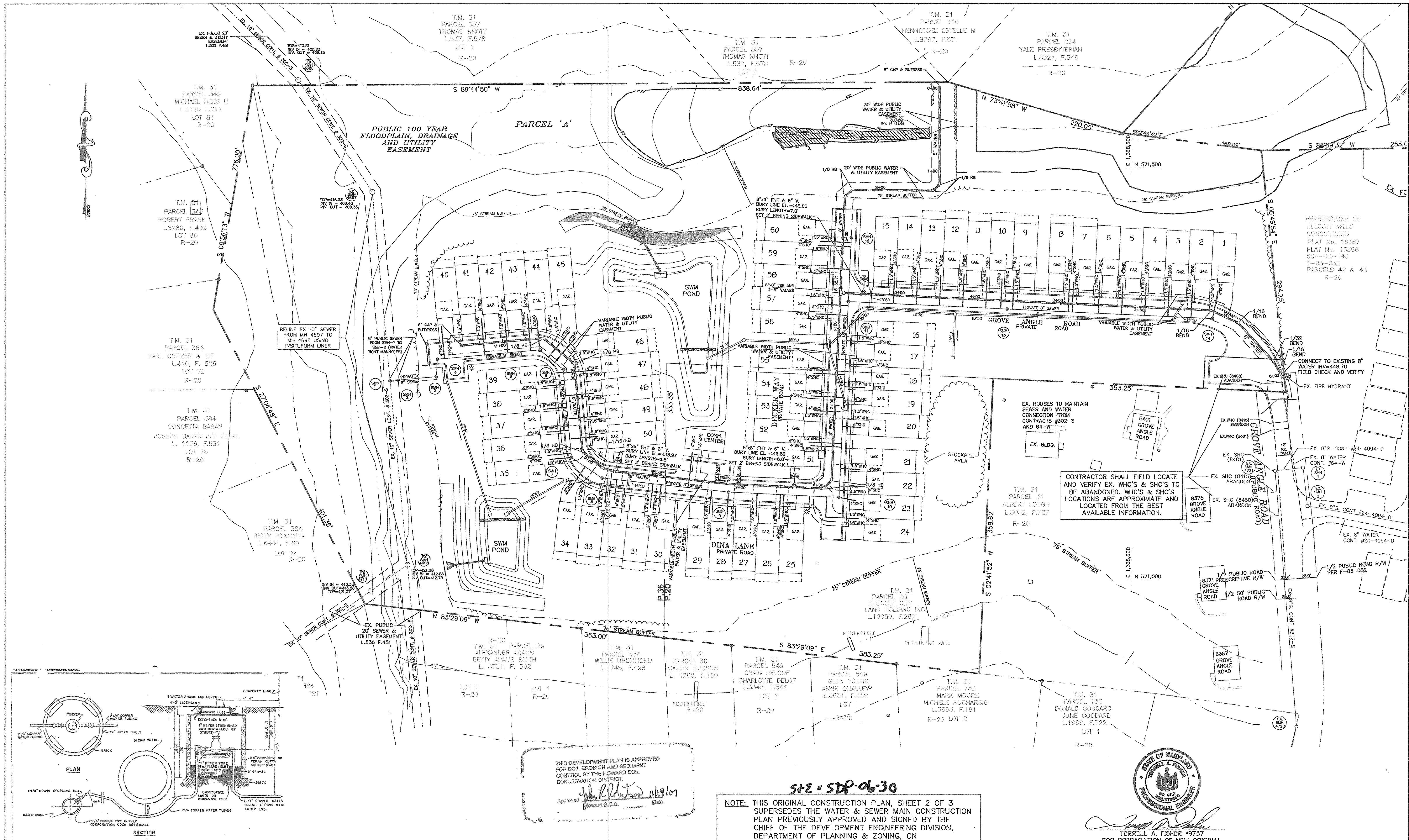
600' SCALE MAP NO. 31 BLOCK NO. 7

HEARTHSTONE OF ELLICOTT MILLS II
PARCELS 20 & 36 - UNITS 1 - 60

CONTRACT NO.: 24-4319-D
SECOND ELECTION DISTRICT
HOWARD COUNTY, MARYLAND

scale AS SHOWN

1 of 4



THIS DEVELOPMENT PLAN IS APPROVED FOR SOIL EROSION AND SEDIMENT CONTROL BY THE HOWARD SOIL CONSERVATION DISTRICT.

Approved: *[Signature]* Date: *[Date]*

NOTE: THIS ORIGINAL CONSTRUCTION PLAN, SHEET 2 OF 3 SUPERSEDES THE WATER & SEWER MAIN CONSTRUCTION PLAN PREVIOUSLY APPROVED AND SIGNED BY THE CHIEF OF THE DEVELOPMENT ENGINEERING DIVISION, DEPARTMENT OF PLANNING & ZONING, ON AUGUST 15, 2006.

STATE OF MARYLAND
TERRELL A. FISHER #9757
 PROFESSIONAL ENGINEER
 FOR PREPARATION OF NEW ORIGINAL

NOTE: ALL UNITS SHALL HAVE A 1" OUTSIDE METER SETTING WITH A 1.5" WATER HOUSE CONNECTION.

DEPARTMENT OF PUBLIC WORKS
 HOWARD COUNTY, MARYLAND

DEPARTMENT OF PLANNING & ZONING
 HOWARD COUNTY, MARYLAND

[Signature] 11/2/07
 CHIEF, BUREAU OF UTILITIES

[Signature] 11/2/07
 CHIEF, DEVELOPMENT ENGINEERING DIVISION

MILDENBERG, BOENDER & ASSOC., INC.
 Engineers Planners Surveyors
 5072 Dorsey Hall Drive, Suite 202, Ellicott City, Maryland 21042
 (410) 997-0296 Dial. (301) 621-5521 Wash. (410) 997-0298 Fax.

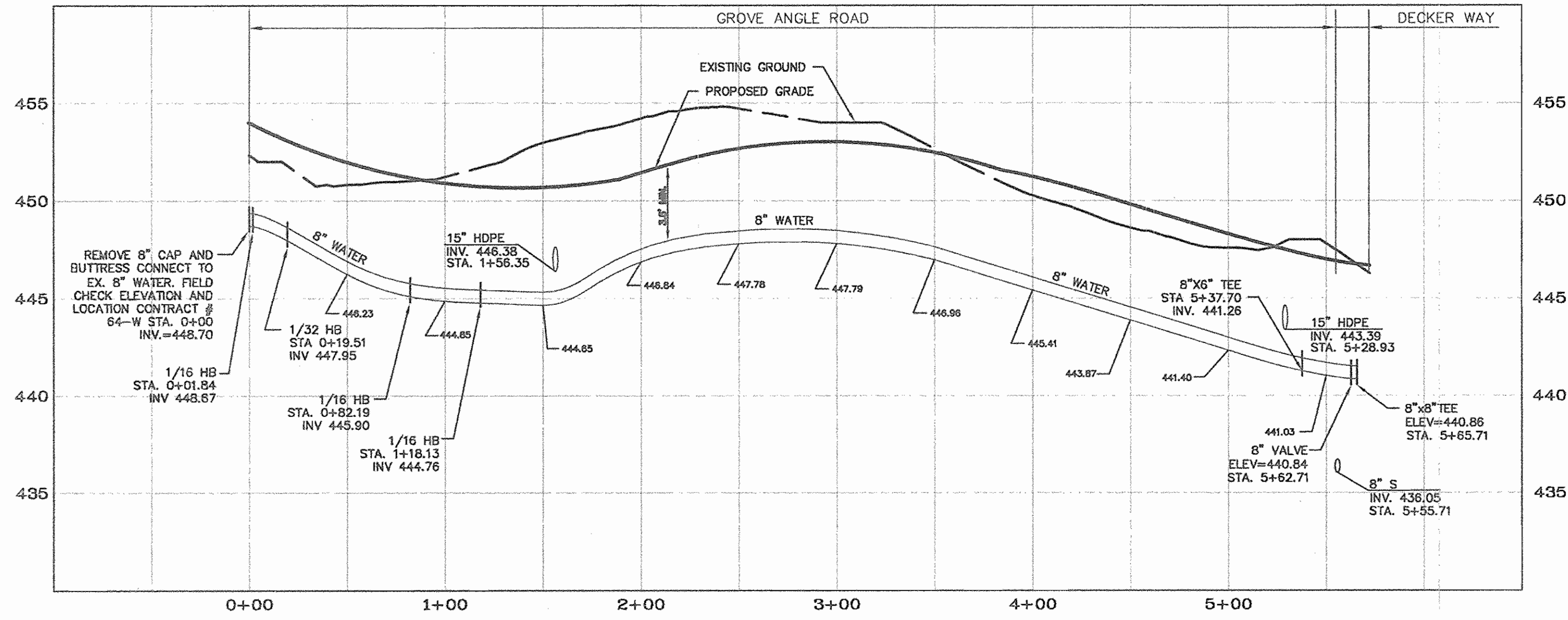


engineering	JJO						
illustration	JJO						
approval							
project	04-021						
date	OCT 2007	BY	NO.	REVISION	DATE	600' SCALE MAP NO. 31	BLOCK NO. 7

HEARTHSTONE OF ELlicOTT MILLS II
 PARCELS 20 & 36; UNITS 1 - 60
 CONTRACT NO.: 24-4510-D
 SECOND ELECTION DISTRICT
 HOWARD COUNTY, MARYLAND

scale 1" = 60'

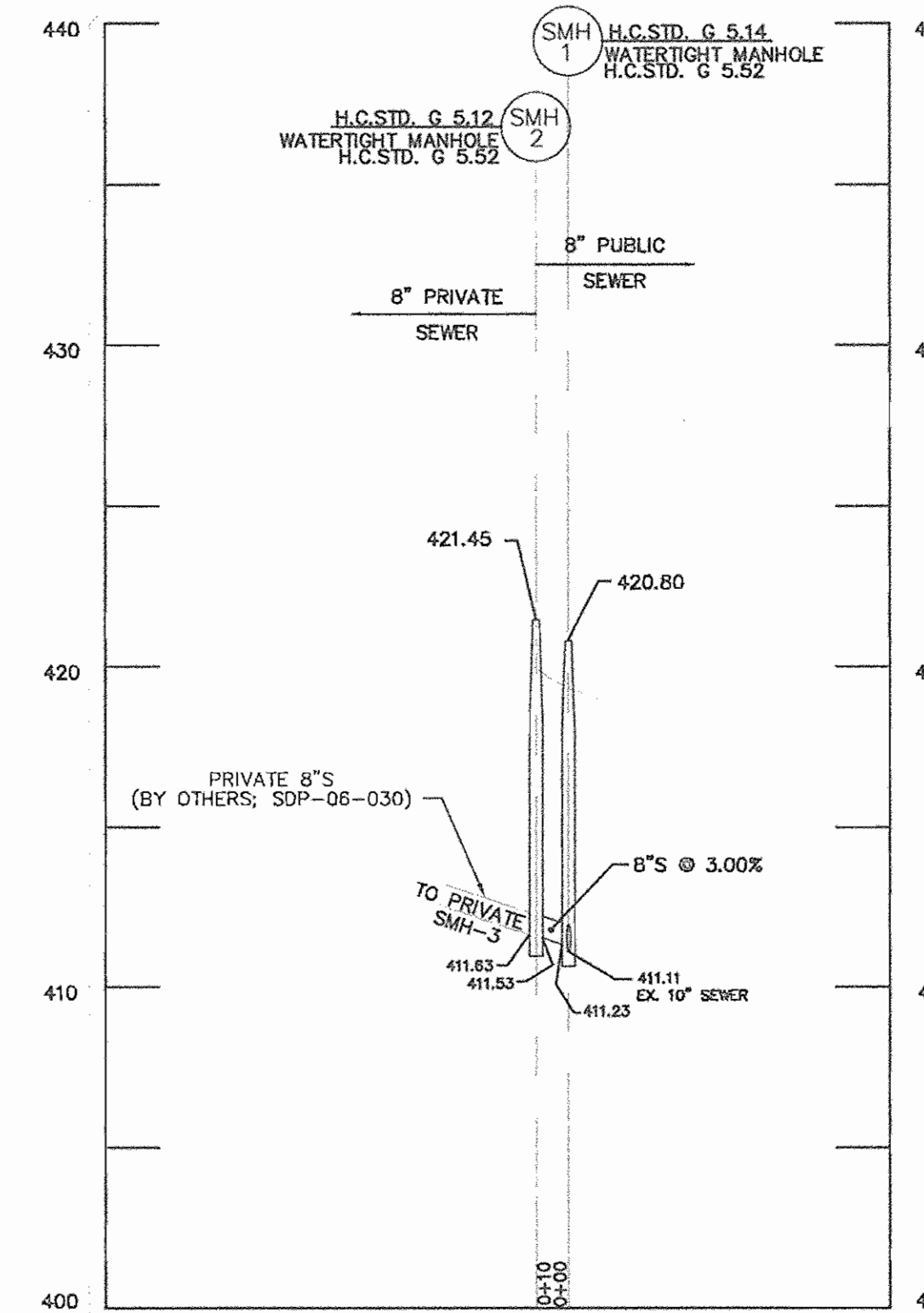
2 OF 4



8" PUBLIC WATER PROFILE - GROVE ANGLE ROAD

SCALE: HOR. 1"=50'
VER. 1"=5'

W.M. STA.	APPURTENANCE	NORTHING	EASTING
8" WATER MAIN: GROVE ANGLE ROAD			
0+00.00	CONNECT TO EX. 8"	571219.06	1368779.66
0+01.84	1/16 H.B.	571250.63	1368779.43
0+19.51	1/32 H.B.	571265.78	1368770.34
0+82.19	1/16 H.B.	571312.14	1368728.16
1+18.13	1/16 H.B.	571327.41	1368695.70
5+37.70	8"x6" TEE	571347.20	1368276.52
5+62.71	8" VALVE	571348.30	1368253.10
5+65.71	8"x8" TEE	571348.92	1368248.51

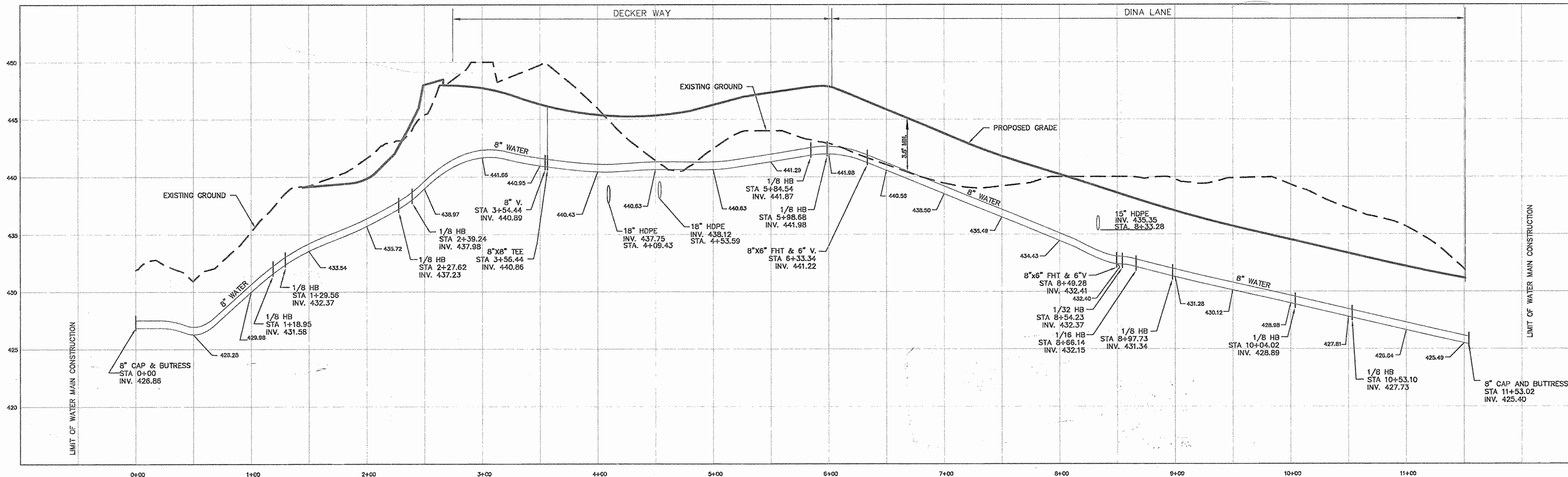


8" PUBLIC SEWER PROFILE

SCALE: HOR. 1"=50'
VER. 1"=5'

NOTE: THIS ORIGINAL CONSTRUCTION PLAN, SHEET 3 OF 3 SUPERSEDES THE WATER & SEWER MAIN CONSTRUCTION PLAN PREVIOUSLY APPROVED AND SIGNED BY THE CHIEF OF THE DEVELOPMENT ENGINEERING DIVISION, DEPARTMENT OF PLANNING & ZONING, ON AUGUST 15, 2006.

SMH#	NORTHING & EASTING	TOP ELEVATION
SMH1	N. 571,241.77 E. 1,367,705.03	420.80
SMH2	N. 571,242.63 E. 1,367,715.00	421.45



8" PUBLIC WATER PROFILE - DECKER WAY & DINA LANE

SCALE: HOR. 1"=50'
VER. 1"=5'

W.M. STA.	APPURTENANCE	NORTHING	EASTING
8" WATER MAIN: DECKER WAY & DINA LANE			
0+00.00	8" CAP & BUTRESS	571598.98	1368368.21
1+18.95	1/8 H.B.	571480.01	1368368.20
1+29.56	1/8 H.B.	571472.52	1368360.71
2+27.62	1/8 H.B.	571473.40	1368262.66
2+39.24	1/8 H.B.	571455.99	1368254.08
3+54.44	8" VALVE	571353.71	1368248.75
3+56.44	8"x9" TEE	571348.52	1368248.51
5+04.54	1/8 H.B.	571120.67	1368237.82
5+98.68	1/8 H.B.	571111.15	1368227.36
6+33.34	8"x6" TEE	571122.78	1368192.74
6+98.70	PC (CRIMP RADIUS 400')	571115.86	1368127.43
7+25.34	PT (CRIMP RADIUS 400')	571110.00	1368100.88
8+49.28	8"x6" TEE	571132.06	1367977.76
8+54.23	1/32 H.B.	571132.62	1367972.05
8+66.14	1/16 H.B.	571136.25	1367961.50
9+97.73	1/8 H.B.	571156.46	1367937.22
10+04.02	1/8 H.B.	571262.31	1367927.54
10+53.10	1/8 H.B.	571293.71	1367898.82
11+51.02	8" CAP & BUTRESS	571284.47	1367789.30



TERRELL A. FISHER #9757
FOR PREPARATION OF NEW ORIGINAL

DEPARTMENT OF PUBLIC WORKS
HOWARD COUNTY, MARYLAND
CHIEF, BUREAU OF UTILITIES
DATE 11/1/07

DEPARTMENT OF PLANNING & ZONING
HOWARD COUNTY, MARYLAND
CHIEF, DEVELOPMENT ENGINEERING DIVISION
DATE 11/2/07

MILDENBERG, BOENDER & ASSOC., INC.
Engineers Planners Surveyors
5072 Dorsey Hall Drive, Suite 202, Ellicott City, Maryland, 21042
(410) 997-0298 Balt. (301) 621-5521 Wash. (410) 997-0298 Fax



engineering	JJO				
illustration	JJO				
approval	CRE				
project	04-021				
date	OCT 2007	BY	NO.	REVISION	DATE

WATER AND SEWER PROFILES

600' SCALE MAP NO. 31 BLOCK NO. 7

HEARTHSTONE OF ELlicOTT MILLS II
PARCELS 20 & 36; UNITS 1 - 60
CONTRACT NO.: 24-4319-D
SECOND ELECTION DISTRICT
HOWARD COUNTY, MARYLAND

scale 1" = 50'
3 OF 4

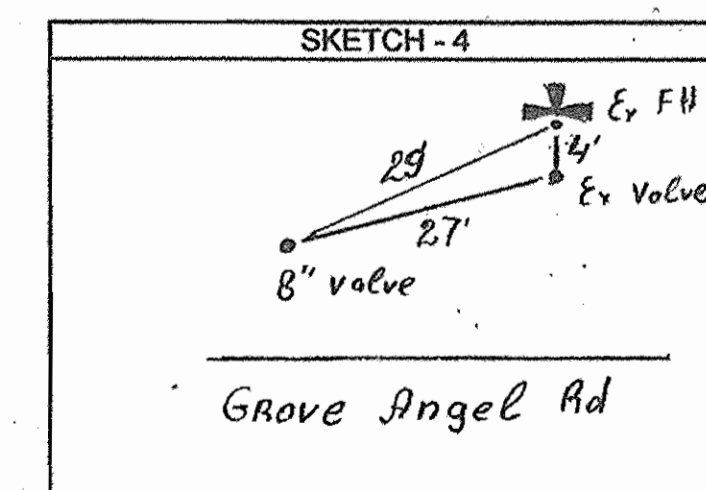
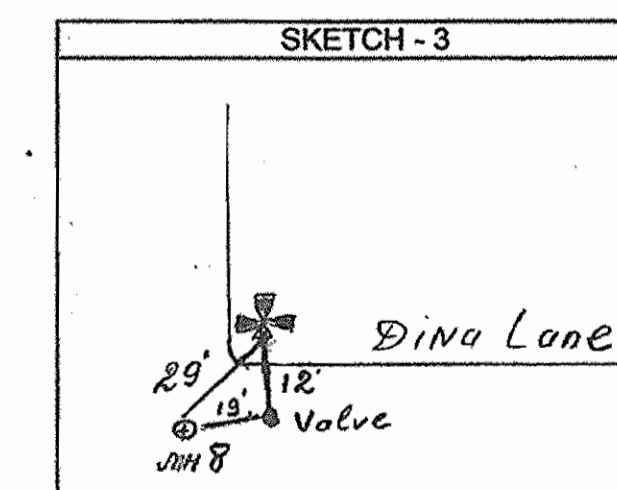
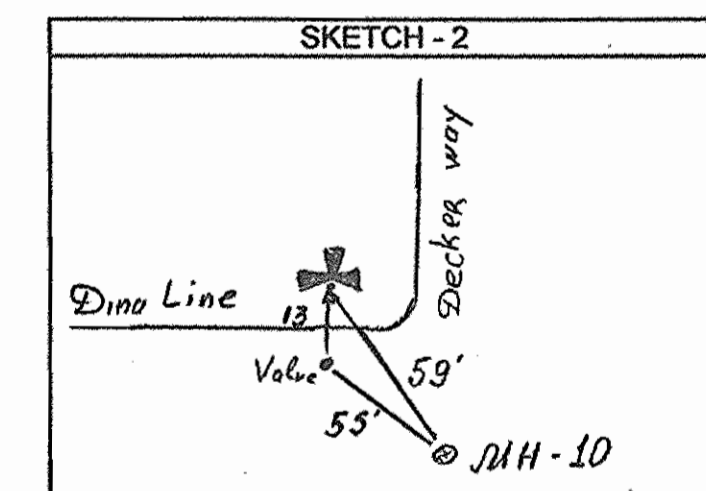
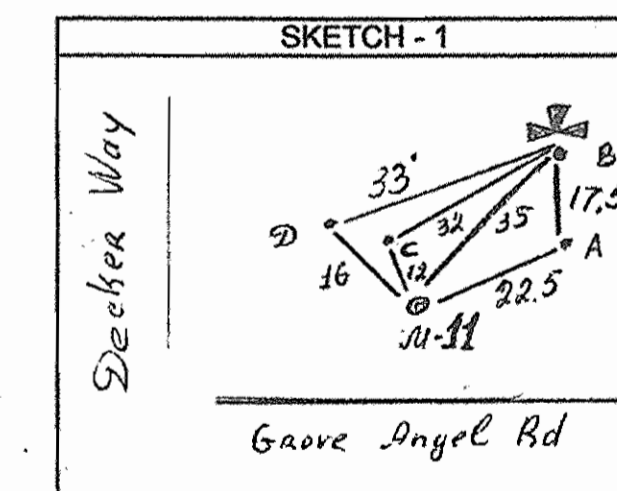
LOTS 1 THROUGH 60 GROVE ANGLE ROAD (WATER ONLY)

HEARTHSTONE - CONTRACT (#24-4319-D)				
WATER HOUSE CONNECTION - BIULD AS IS (Water meter boxes)				
Lot number	To	From	Distance	Remarks
1	WHC	Inlet - 8	39'	
"	WHC	MH - 14	22'	
2	WHC	Inlet - 8	15'	
"	WHC	MH - 14	37'	
3	WHC	Inlet - 8	24'	
"	WHC	MH - 14	61'	
4	WHC	Inlet - 8	51'	
"	WHC	MH - 14	87'	
5	WHC	Inlet - 8	79'	
"	WHC	Inlet - 7	86'	
6	WHC	MH - 13	102'	
"	WHC	Inlet - 8	107'	
7	WHC	MH - 13	87'	
"	WHC	No points on 100' distance		
8	WHC	MH - 13	69'	
"	WHC	No points on 100' distance		
9	WHC	MH - 13	30'	Storm Drain MH between Sta 4+00 and 4+50
"	WHC	Storm drain MH	84'	
10	WHC	MH - 13	30'	Storm Drain MH between Sta 4+00 and 4+50
"	WHC	Storm drain MH	68'	
11	WHC	MH - 13	46'	Storm Drain MH between Sta 4+00 and 4+50
"	WHC	Storm drain MH	47'	
12	WHC	MH - 13	70'	Storm Drain MH between Sta 4+00 and 4+50
"	WHC	Storm drain MH	36'	
13	WHC	FH (5+37)	89'	Storm Drain MH between Sta 4+00 and 4+50
"	WHC	Storm drain MH	43'	
14	WHC	FH (5+37)	61'	
"	WHC	MH - 12	92'	
15	WHC	FH (5+37)	33'	
"	WHC	MH - 12	70'	
16	WHC	MH - 11	46'	
"	WHC	Inlet - 5	16'	
17	WHC	MH - 11	73'	
"	WHC	Inlet - 5	20'	
18	WHC	Inlet - 4	57'	
"	WHC	Inlet - 5	47'	
19	WHC	Inlet - 4	88'	
"	WHC	Inlet - 5	79'	
20	WHC	MH - 10	97'	
"	WHC	FH (6+33)	98'	
21	WHC	MH-10	44'	
"	WHC	FH (6+33)	72'	
22	WHC	MH-10	12'	
"	WHC	FH (6+33)	71'	
23	WHC	MH-10	23'	
"	WHC	FH (6+33)	80'	
24	WHC	MH-10	34'	

"	WHC	FH (6+33)	87'	
25	WHC	MH-9	78'	
"	WHC	MH-10	68'	
26	WHC	MH-9	60'	
"	WHC	MH-10	79'	
27	WHC	MH-9	35'	
"	WHC	FH (6+33)	65'	
28	WHC	MH-9	22'	
"	WHC	FH (6+33)	83'	
29	WHC	MH-9	35'	
"	WHC	No points on 100' distance		
30	WHC	MH - 8	68'	
"	WHC	FH (6+49)	67'	
31	WHC	MH - 8	59'	
"	WHC	FH (6+49)	59'	
32	WHC	MH - 7	79'	
"	WHC	MH - 8	32'	
33	WHC	MH - 7	56'	
"	WHC	MH - 8	16'	
34	WHC	MH - 7	34'	
"	WHC	MH - 8	26'	
35	WHC	MH - 8	51'	
"	WHC	MH - 7	10'	
36	WHC	MH - 8	64'	
"	WHC	MH - 7	18'	
37	WHC	MH - 7	42'	
"	WHC	MH - 6	69'	
38	WHC	MH - 7	69'	
"	WHC	MH - 6	43'	
39	WHC	MH - 5	40'	
"	WHC	MH - 6	20'	
40	WHC	MH - 3	59'	
"	WHC	MH - 4	41'	
41	WHC	MH - 3	60'	
"	WHC	MH - 4	73'	
42	WHC	MH - 3	86'	
"	WHC	MH - 4	96'	
43	WHC	MH - 5	30'	
"	WHC	MH - 6	72'	
44	WHC	MH - 5	23'	
"	WHC	MH - 6	52'	
45	WHC	MH - 5	25'	
"	WHC	MH - 6	52'	
46	WHC	MH - 5	45'	
"	WHC	MH - 6	27'	
47	WHC	MH - 5	64'	Leak fixed with flared coupling. Checked - OK.
"	WHC	MH - 6	25'	
48	WHC	MH - 5	83'	
"	WHC	MH - 6	42'	
49	WHC	MH - 7	53'	
"	WHC	MH - 6	68'	
50	WHC	MH - 7	42'	

"	WHC	FH (8+49)	45'	
51	WHC	FH (6+33)	44'	Leak fixed - 2 check before backfill.
"	WHC	MH - 10	63'	
52	WHC	FH (6+33)	58'	
"	WHC	MH - 10	76'	
53	WHC	FH (6+33)	78'	
"	WHC	Inlet - 4	87'	
54	WHC	Inlet - 5	66'	
"	WHC	Inlet - 4	58'	
55	WHC	Inlet - 5	43'	
"	WHC	Inlet - 4	30'	
56	WHC	MH - 11	36'	
"	WHC	FH (5+37)	68'	
57	WHC	MH - 11	28'	
"	WHC	MH - 12	77'	
58	WHC	MH - 11	42'	
"	WHC	MH - 12	53'	
59	WHC	MH - 11	65'	
"	WHC	MH - 12	32'	
60	WHC	MH - 11	81'	
"	WHC	MH - 12	28'	
Community Center	WHC	FH (8+49)	99'	
"	WHC	MH-9	56'	

#	Item	Station	To	From	Distance	Remarks
1	6" valve - FH Tee (A)	5+37	A	MH -11	22.5'	SKETCH - 1 (Intersection Grove Angel Rd and Decker Way)
2	Fire hydrant (B)	5+37	B	MH -11	35'	
"	"	"	B	A	17.5'	
3	8" valve (C)	5+62	C	MH -11	12'	SKETCH - 2 (Dina Line)
"	"	"	C	B	32'	
4	8" valve (D)	3+56	D	MH -11	16'	SKETCH - 3 (Dina Line)
"	"	"	D	B	33'	
5	6" valve - FH Tee	6+33	6" valve - FH Tee	MH -10	55'	SKETCH - 4 (Grove Angel Rd)
6	Fire hydrant	6+33	Fire hydrant	MH -10	59'	
7	6" valve - FH Tee	8+49	6" valve - FH Tee	MH -8	19'	
8	Fire hydrant	8+49	Fire hydrant	MH -8	29'	
9	8" valve	0+20 - 0+26	Ex Fire hydrant	8" valve	29'	
Existing Fire hydrant	0+00	Ex valve	8" valve	27'		
		Ex Fire hydrant	Ex valve	4'		



DEPARTMENT OF PUBLIC WORKS
HOWARD COUNTY, MARYLAND
N.A.

DEPARTMENT OF PLANNING & ZONING
HOWARD COUNTY, MARYLAND
N.A.

AS-BUILT WATER AND SEWER DETAILS ONLY
KCI TECHNOLOGIES, INC.
10 NORTH PARK DRIVE
HUNT VALLEY, MD 21030-1846

K.C.I. 1 PREPARE SUBJECT PLAN 2/08
BY NO. REVISION DATE

AS-BUILT FIELD REVISIONS

800' SCALE MAP NO. 31 ELOCK NO. 7

HEARTHSTONE OF ELICOTT MILLS II
PARCELS 20 & 36; UNITS 1 - 60
CONTRACT NO.: 24-4319-D
SECOND ELECTION DISTRICT
HOWARD COUNTY, MARYLAND

scale

4 of 4