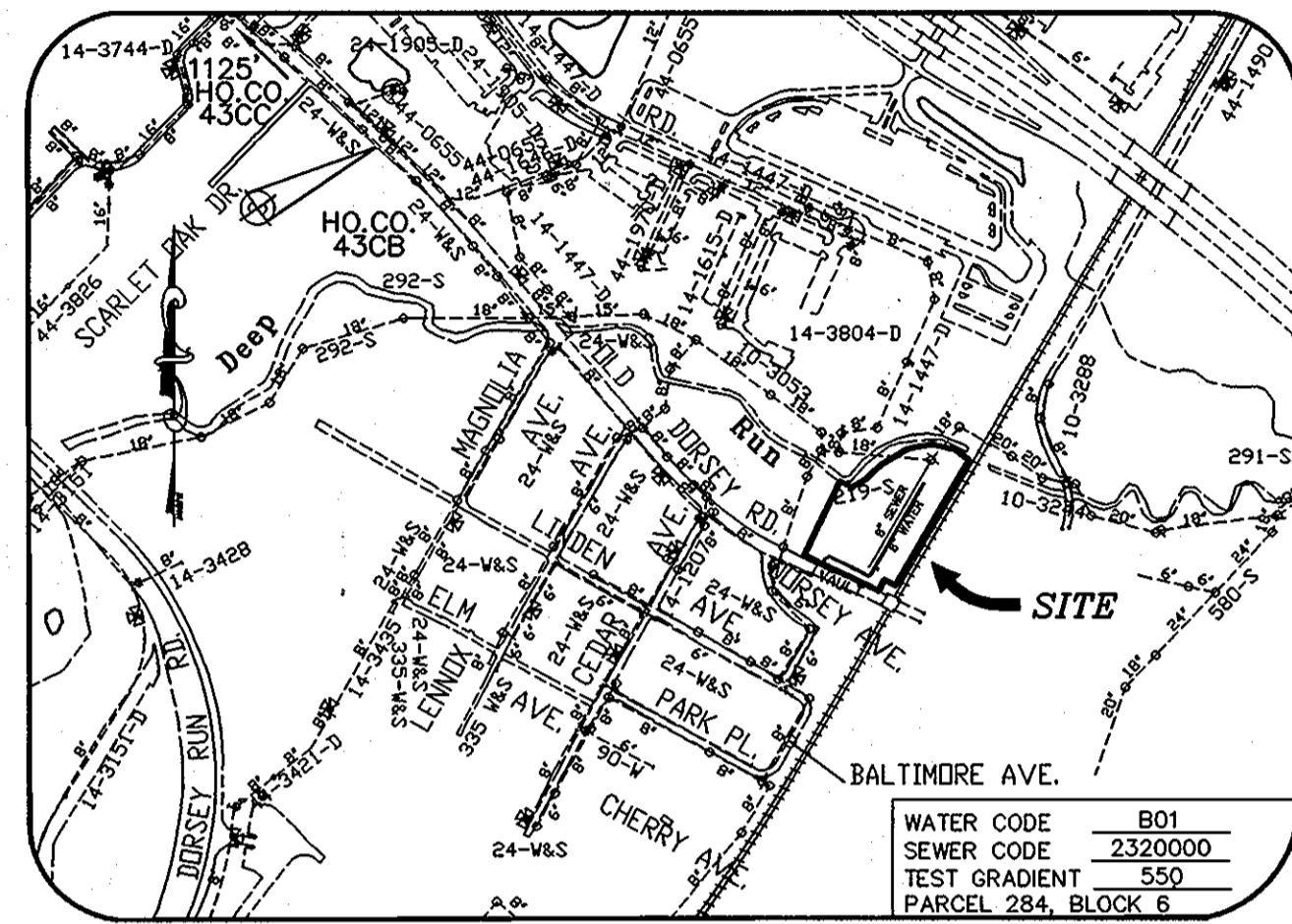


QUANTITY TABLE

ITEMS	QUANTITIES ESTIMATED	QUANTITIES		
		TYPE	MANUFACTURER/SUPPLIER	
STANDARD MH (HO. CO. STD.G-5.01)	3 EACH	3 EACH		
8" SEWER MAIN	459 L.F.	459 L.F.	PVC SDR 35	JMEAGLE / BRS
4" SEWER HOUSE CONNECTION	345 L.F.	345 L.F.	PVC SDR 35	JMEAGLE / BRS
# 4" SEWER HOUSE CONNECTIONS	21 EACH	21 EACH	TY PVC	JMEAGLE / BRS
8" WATER MAIN	489 L.F.	489 L.F.	DIP CL 54	GRIFFIN PIPE / BRS
1.5" WATER HOUSE CONNECTION	100 L.F.	100 L.F.	K COPPER	READING TUBE / BRS
# 1.5" TWIN WATER HOUSE CONNECTIONS	7 EACH	7 EACH		SIGMA CORP / BRS
# 1" WATER HOUSE CONNECTIONS	21 EACH	21 EACH		SIGMA CORP / BRS
8" CAP & BUTTRESS	1 EACH	1 EACH		SIGMA CORP / BRS
8" x 8" TEE & 1 - 8" VALVES	1 EACH	1 EACH	SSTAP	ROMAC, MUELLER CO. / BRS
8" x 6" FHT & VALVE	1 EACH	1 EACH		MUELLER CO. / BRS
NAME OF UTILITY CONTRACTOR: ROB HARRIS INC.				
SURVEY AND DRAFTING DIVISION AS-BUILT DATE: JULY 2010				



VICINITY MAP
SCALE 1"=600'

TYPE OF BUILDING	SFA
No. OF UNITS	21
No. OF WATER HOUSE CONNECTION	21
No. OF SEWER HOUSE CONNECTIONS	21
DRAINAGE AREA - PATAPSCO	
TREATMENT PLANT - PATAPSCO WWTP	

EROSION AND SEDIMENT CONTROL FOR THIS CONTRACT IS PROVIDED UNDER - GP-06-101

PLAN REFERENCE NUMBERS:
GP-06-101
F - N/A
SDP - N/A

I/WE CERTIFY THAT ALL DEVELOPMENT AND CONSTRUCTION WILL BE DONE ACCORDING TO THIS PLAN, AND THAT ANY RESPONSIBLE PERSONNEL INVOLVED IN THE CONSTRUCTION PROJECT WILL HAVE A CERTIFICATE OF ATTENDANCE AT A DEPARTMENT OF THE ENVIRONMENT APPROVED TRAINING PROGRAM FOR THE CONTROL OF SEDIMENT AND EROSION BEFORE BEGINNING THE PROJECT. I ALSO AUTHORIZE PERIODIC ON-SITE INSPECTION BY THE HOWARD SOIL CONSERVATION DISTRICT.

DEVELOPER'S SIGNATURE: *[Signature]* DATE: 11/7/06

DEVELOPER'S NAME: *[Signature]*

I HEREBY CERTIFY THAT THIS PLAN FOR EROSION AND SEDIMENT CONTROL REPRESENTS A PRACTICAL AND WORKABLE PLAN BASED ON MY PERSONAL KNOWLEDGE OF THE SITE CONDITIONS AND THAT IT WAS PREPARED IN ACCORDANCE WITH THE REQUIREMENTS OF THE HOWARD SOIL CONSERVATION DISTRICT.

ENGINEER'S SIGNATURE: *[Signature]* DATE: 11/7/06

ENGINEER'S NAME: R. JACOB HIKMAT

REVIEWED FOR HOWARD SCD AND MEETS TECHNICAL REQUIREMENTS.

USDA - NATURAL RESOURCES CONSERVATION SERVICE: *[Signature]* DATE: 12/21/06

THIS DEVELOPMENT PLAN IS APPROVED FOR SOIL EROSION AND SEDIMENT CONTROL BY THE SOIL CONSERVATION DISTRICT.

HOWARD SCD: *[Signature]* DATE: 12/21/06

**CONTRACT NO.: 14-4315-D
DEPOT CROSSING
LENNOX PARK LOTS 252-264 & 266-273
WATER AND SEWER MAIN EXTENSIONS
HOWARD COUNTY, MARYLAND
DEPARTMENT OF PUBLIC WORKS**

AS BUILT
DATE: JULY 2010

INDEX OF DRAWINGS

NO.	DESCRIPTION
1	TITLE SHEET
2	WATER AND SEWER PLAN AND PROFILES

DEVELOPER
GREEN ACRES ROCK LLC
H & H ROCK COMPANIES
6800 DEERPATH ROAD
SUITE 100
ELK RIDGE MARYLAND 21075-6200

DEPOT CROSSING
LENNOX PARK LOTS 252-264 & 266-273
PARCEL 284
CONTRACT NO.: 14-4315-D
SIXTH ELECTION DISTRICT
HOWARD COUNTY, MARYLAND

TITLE SHEET

DEPARTMENT OF PUBLIC WORKS
HOWARD COUNTY, MARYLAND
CHIEF, BUREAU OF UTILITIES
DATE: 12-13-06

DEPARTMENT OF PLANNING & ZONING
HOWARD COUNTY, MARYLAND
CHIEF, DEVELOPMENT ENGINEERING DIVISION
DATE: 1/5/07

MILDENBERG, BOENDER & ASSOC., INC.
Engineers Planners Surveyors
5072 Dorsey Hall Drive, Suite 202, Ellicott City, Maryland 21042
(410) 987-0286 Ball. (301) 621-5321 Wash. (410) 987-0286 Fax.



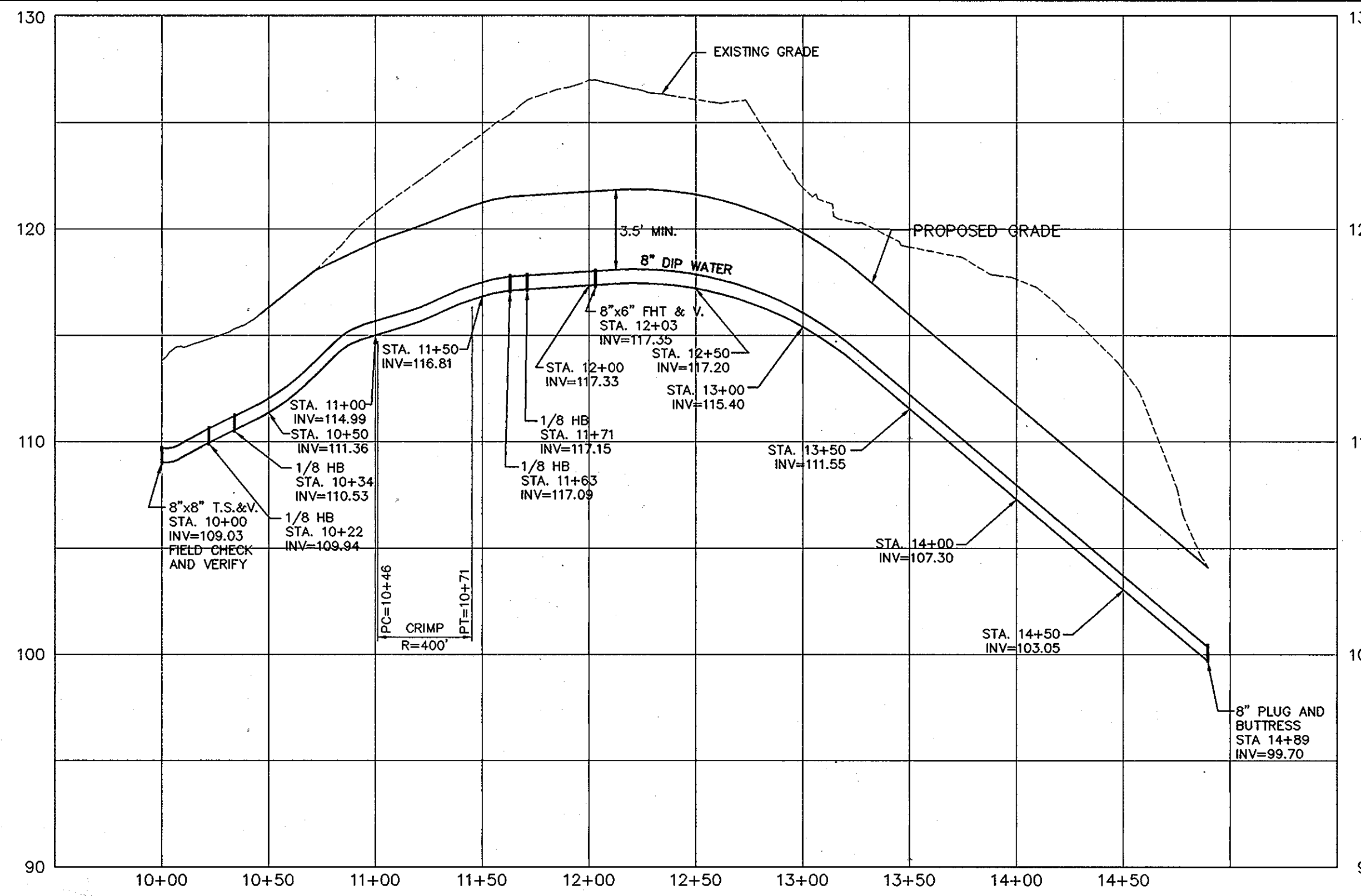
NO.	REVISION	DATE
1	REVISED QUANTITY TABLE	6/07
2		
3		
4		
5		
6		
7		
8		
9		
10		

600' SCALE MAP NO. 43 BLOCK NO. 6

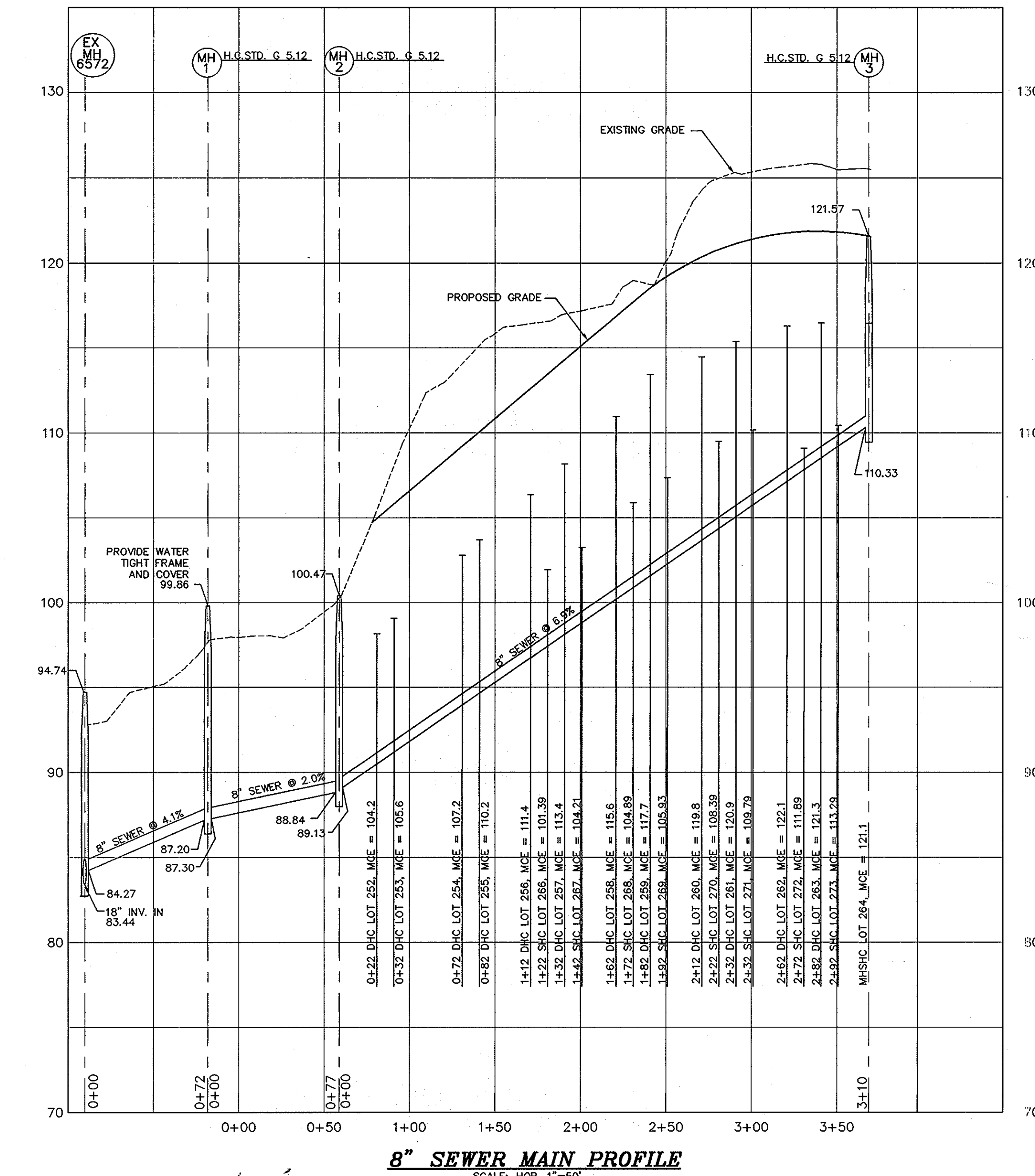
SEWER MANHOLE LOCATION CHART		
MANHOLE NO.	NORTHING	EASTING
MH 1	551,023.42	1,384,004.44
MH 2	551,041.19	1,383,929.17
MANHOLE NO.	STATION	OFFSET
MH 3	1+97.18	4.73' LEFT

WATER MAIN TABULATION CHART		
APPURTENANCE	NORTHING	EASTING
8" x 8" T.S.&V.	550,778.01	1,383,632.28
METER VAULT	550,783.58	1,383,663.27
1/8" HB	550,798.18	1,383,641.26
1/8" HB	550,802.33	1,383,652.05
1/8" HB	550,745.94	1,383,768.22
1/8" HB	550,748.12	1,383,777.40
APPURTENANCE	STATION	OFFSET
8" x 6" FHT & 6" VALVE	2+06.85	16.67' LEFT
8" CAP & BUTTRESS	4+94.83	7.00' RIGHT

SEWER HOUSE CONNECTION TABLE			
UNIT #	% SLOPE	INV. @ EASE.	MIN. SEWERABLE ELEV.
252	2	98.40	104.2
253	2	99.31	105.6
254	2	102.93	107.2
255	2	103.83	110.2
256	2	106.51	111.4
257	2	108.32	113.4
258	2	111.04	115.6
259	2	113.52	117.7
260	2	114.53	119.8
261	2	115.45	120.9
262	2	116.25	122.1
263	2	116.44	121.3
264	2	116.14	121.1
265	2	108.55	101.39
267	2	108.33	104.21
268	2	111.00	104.89
269	2	113.59	105.93
270	2	114.74	108.39
271	2	115.77	109.79
272	2	116.38	111.89
273	2	116.41	113.29

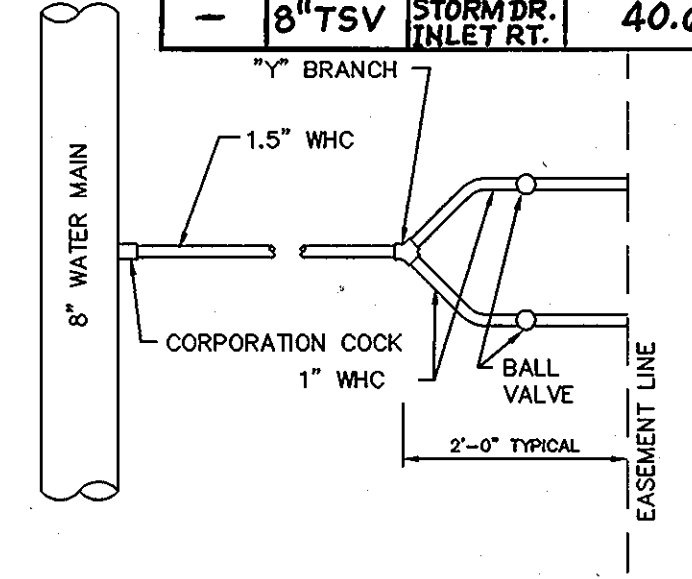


WATER AND SEWER HOUSE CONNECTIONS/AS-BUILTS					
LOT#	FROM	TO	FEET	TO	FEET
252	WHC	MH-2	48.3'	MH-3	297.2'
252	SHC	MH-2	50.4'	MH-3	293.0'
253	WHC	MH-2	60.0'	MH-3	277.0'
253	SHC	MH-2	55.0'	MH-3	283.0'
254	WHC	MH-2	82.3'	MH-3	248.4'
254	SHC	MH-2	86.5'	MH-3	243.0'
255	WHC	MH-2	99.7'	MH-3	229.0'
255	SHC	MH-2	95.5'	MH-3	234.0'
256	WHC	MH-2	135.3'	MH-3	191.3'
256	SHC	MH-2	121.3'	MH-3	206.2'
257	WHC	MH-2	139.5'	MH-3	187.0'
257	SHC	MH-2	143.5'	MH-3	183.0'
258	WHC	MH-2	184.3'	MH-3	142.5'
258	SHC	MH-2	170.0'	MH-3	156.8'
259	WHC	MH-2	188.3'	MH-3	138.3'
259	SHC	MH-2	192.0'	MH-3	135.0'
260	WHC	MH-2	232.0'	MH-3	96.3'
260	SHC	MH-2	219.3'	MH-3	109.7'
261	WHC	MH-2	236.4'	MH-3	93.4'
261	SHC	MH-2	239.7'	MH-3	91.2'
262	WHC	MH-2	280.9'	MH-3	58.8'
262	SHC	MH-2	268.5'	MH-3	68.1'
263	WHC	MH-2	285.0'	MH-3	55.8'
263	SHC	MH-2	288.3'	MH-3	55.5'
264	WHC	FH	51.5'	MH-3	47.6'
264	SHC	FH	55.2'	MH-3	48.0'



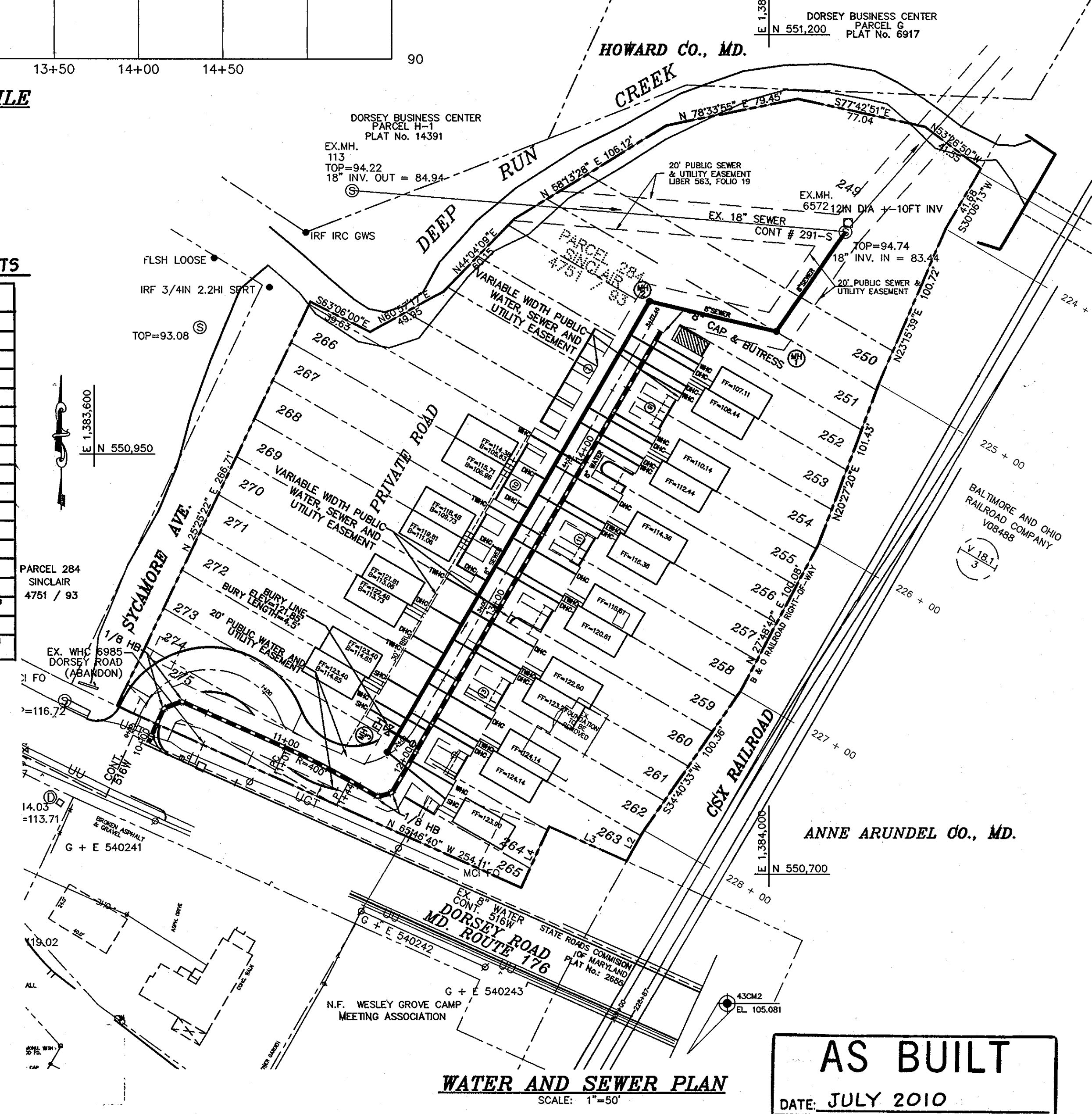
CONSTRUCTION NOTES FOR NEW 8" WATER
 1. EXISTING WHC AND EXISTING SHC TO 6985 DORSEY ROAD MUST BE DISCONNECTED AND PLUGGED AT THE MAIN.

WATER & SEWER HOUSE CONNECTIONS/AS-BUILTS					
LOT#	FROM	TO	FEET	TO	FEET
266	WHC	MH-2	109.3'	FH	195.0'
266	SHC	MH-2	126.1'	FH	178.0'
267	WHC	MH-2	155.0'	FH	148.4'
267	SHC	MH-2	146.6'	FH	158.0'
268	WHC	MH-2	158.8'	FH	144.4'
268	SHC	MH-2	178.0'	FH	125.8'
269	WHC	MH-2	205.0'	FH	100.0'
269	SHC	MH-2	197.0'	FH	107.0'
270	WHC	MH-2	209.0'	FH	95.0'
270	SHC	MH-2	226.6'	FH	78.0'
271	WHC	MH-2	255.0'	FH	51.0'
271	SHC	MH-2	245.6'	FH	59.0'
272	WHC	MH-2	258.4'	FH	47.0'
272	SHC	MH-2	276.0'	FH	32.0'
273	WHC	FH	22.0'	MH-3	34.0'
273	SHC	FH	19.0'	MH-3	28.0'
-	FHV	FH	18.5'	MH-3	20.1'
-	8" TSV	STORM DR. INLET RT.	40.6'	STORM DRAIN INLET LEFT	40.6'



TWIN WATER HOUSE CONNECTION
TWHC
N.T.S.

THIS NEW ORIGINAL MYLAR SUPERSEDED WATER & SEWER PLANS SHEET 2 OF 2, CONTRACT #14-4315-D, APPROVED ON 2/6/07 BY CHIEF, DEVELOPMENT ENGINEERING DIVISION.



WATER AND SEWER PLAN
SCALE: 1"=50'

AS BUILT
DATE: JULY 2010

DEPARTMENT OF PUBLIC WORKS
HOWARD COUNTY, MARYLAND
12/5/07

DEPARTMENT OF PLANNING & ZONING
HOWARD COUNTY, MARYLAND
12/1/07

MILDENBERG, BOENDER & ASSOC., INC.
Engineers Planners Surveyors
5072 Dorsey Hall Drive, Suite 202, Ellicott City, Maryland 21042
(410) 997-0286 Balt. (301) 621-5521 Wash. (410) 997-0288 Fax

engineering	JJO			
illustration	JJO			
approval				
project	05-013	1	REVISED THE LOCATION FOR CONNECTING INTO THE EXISTING SEWER AND ASSOCIATED REPAIRS.	11/07
date	NOV 2006	BY NO.	REVISION	DATE

WATER AND SEWER PLAN AND PROFILES
600' SCALE MAP NO. 43 BLOCK NO. 6

DEPOT CROSSING
LENNOX PARK LOTS 252-264 & 266-273
PARCEL 284
CONTRACT NO.: 14-4315-D
SIXTH ELECTION DISTRICT
HOWARD COUNTY, MARYLAND

scale AS SHOWN
2 OF 2