

QUANTITIES				
ITEMS	QUANTITIES ESTIMATED	AS-BUILT		
		QUANTITIES	TYPE	MANUFACTURER/SUPPLIER
1" MHC	1437 LF	1437	COPPER	CERRO/HUGHES
8" WATER	2417 LF	73	CL-52	GRIFFIN/GRIFFIN
6" WATER	73 LF	8	GATE	KENNEDY/HUGHES
8" VALVE	8 EA.	1	GATE	"
12" VALVE	1	0	GATE	KENNEDY/HUGHES
8"x6" FHT & 6" VALVE	6 EA.	0	C-502	"
FIRE HYDRANT	6 EA.			
8" 1/2 HB	12 EA.	12	C 153	TYLER/HUGHES
8" 1/16 HB	5 EA.	7	C 153	"
8" 1/32 HB	2 EA.	2	C 153	"
4" SEWER MANHOLE	1 EA.	1	PRECAST	FEDERIKK PRECAST
8" D.I.P.	10 LF	10	CL-52	GRIFFIN/GRIFFIN

NAME OF UTILITY CONTRACTOR: GAINES INC.

SURVEY AND DRAFTING DIV. CHECKBOX: AS-BUILT DATE: 0/00

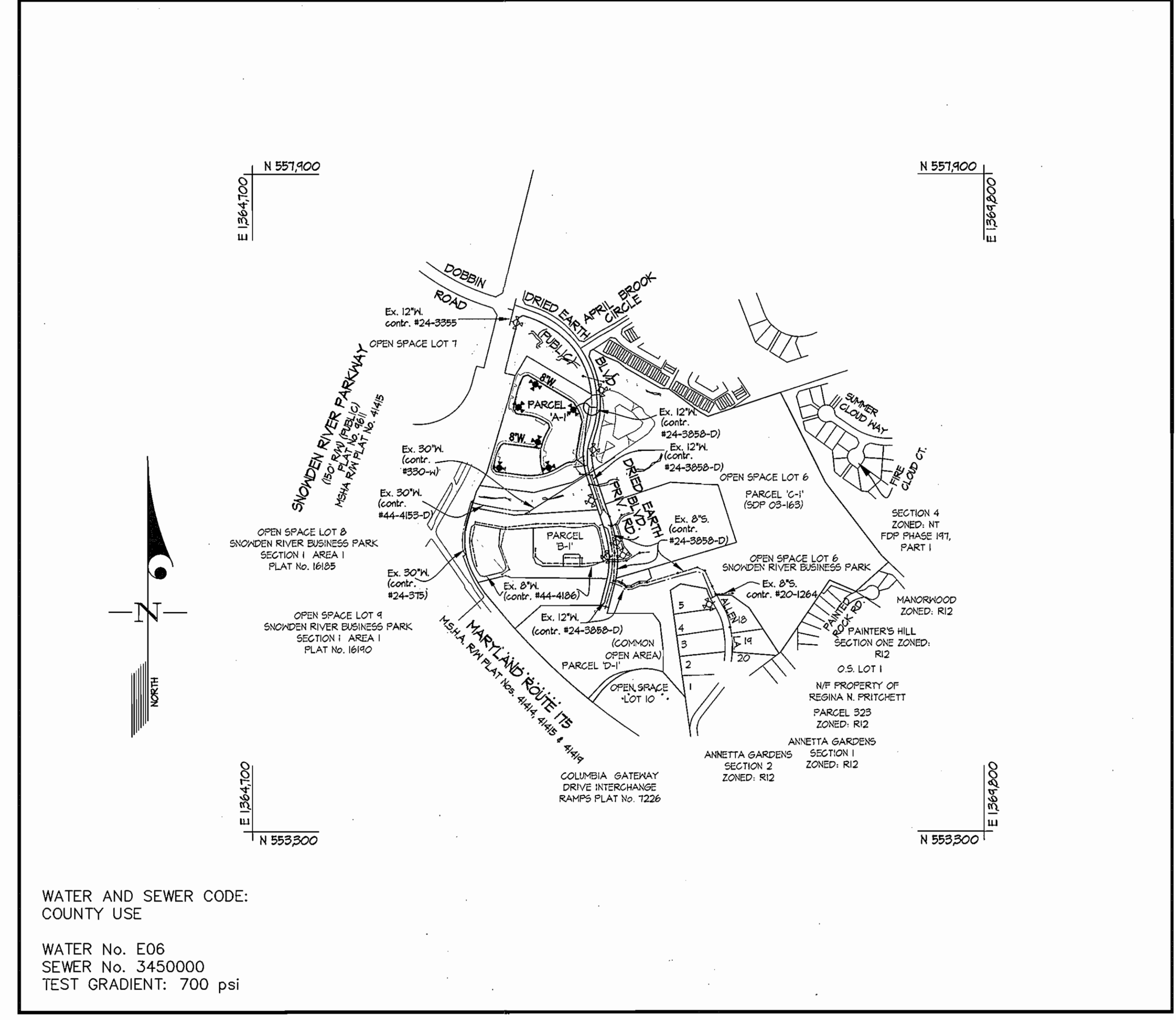
BENCHMARK DESCRIPTIONS

STATION 2542001 (CONCRETE MONUMENT)
ELEV. 426.711 (FOR VERTICAL CONTROL ONLY) STATION IS LOCATED ON S.D. E. TRANSMISSION LINES 1060'S S.W. OF DOBBIN ROAD

STATION 2542002 (CONCRETE MONUMENT)
ELEV. 963.630 (FOR VERTICAL CONTROL ONLY) STATION IS LOCATED 1000'S WEST OF RTE. 175 ON TRANSMISSION LINE @ G.E. TOWER 14-E.

STATION 361A (CONCRETE MONUMENT)
N555346.471, E 1365955.141 (FOR HORIZONTAL CONTROL ONLY) STATION IS LOCATED @ THE SOUTHEAST CORNER OF THE INTERSECTION OF SNOWDEN RIVER PARKWAY AND RTE. 175 3/4' FROM CURB AND 5.75' FROM GUARDRAIL END.

STATION 361B (CONCRETE MONUMENT)
N55346.462, E 1364095.211 (FOR HORIZONTAL CONTROL ONLY) STATION IS LOCATED IN THE MEDIAN STRIP IN SNOWDEN RIVER PARKWAY AT ITS INTERSECTION WITH MCGRAN RD, 34.41' AND 39.71' FROM THE TRAFFIC CONTROL BOX AND TRAFFIC SIGNAL POLE RESPECTIVELY.



WATER AND SEWER CODE:
COUNTY USE

WATER No. E06
SEWER No. 3450000
TEST GRADIENT: 700 psi

VICINITY MAP
SCALE: 1"=600'

CONTRACT No. 24-4308-D
SNOWDEN RIVER BUSINESS PARK
PARCEL 'A-2'
HOWARD COUNTY, MARYLAND
DEPARTMENT OF PUBLIC WORKS

TYPE OF BUILDING	TOWNHOUSE
NUMBER OF UNITS	74
NUMBER OF S.H.C.'s	N/A (SDP-05-148)
NUMBER OF W.H.C.'s	74 (SINGLE) 0 (TWIN)
DRAINAGE AREA	N/A
TREATMENT PLANT	N/A

GENERAL NOTES

- PART I**
- APPROXIMATE LOCATIONS OF EXISTING MAINS ARE SHOWN. THE CONTRACTOR SHALL TAKE ALL NECESSARY PRECAUTIONS TO PROTECT EXISTING MAINS AND SERVICES AND MAINTAIN UNINTERRUPTED SERVICE. ANY DAMAGE INCURRED SHALL BE REPAIRED IMMEDIATELY TO THE SATISFACTION OF THE ENGINEER AT THE CONTRACTOR'S EXPENSE.
 - TOPOGRAPHIC FIELD SURVEYS WERE PERFORMED IN APRIL 2004 BY GUTSCHICK, LITTLE & WEBER, P.A.
 - HORIZONTAL AND VERTICAL SURVEY CONTROLS:
THE COORDINATES SHOWN ON THE DRAWINGS ARE BASED ON MARYLAND STATE REFERENCE SYSTEM NAD '83/91 AS PROJECTED BY HOWARD COUNTY GEODETIC CONTROL STATIONS No. 2542001, No. 2542002, AND No. 361A.
ALL VERTICAL CONTROLS ARE BASED ON NGVD '29.
 - ALL PIPE ELEVATIONS SHOWN ARE INVERT ELEVATIONS UNLESS OTHERWISE NOTED ON THE PLANS.
 - CLEAR ALL UTILITIES BY A MINIMUM OF 12 INCHES. CLEAR ALL POLES BY 5'-0" MINIMUM OR TUNNEL AS REQUIRED UNLESS OTHERWISE NOTED. THE OWNER HAS CONTACTED THE UTILITY COMPANIES AND HAS MADE ARRANGEMENTS FOR BRACING OF POLES AS SHOWN ON THE DRAWINGS. IN THE EVENT THE CONTRACTOR'S WORK REQUIRES BRACING OF ADDITIONAL POLES, ANY COST INCURRED BY THE OWNER FOR THE BRACING OF ADDITIONAL POLES OR DAMAGES SHALL BE DEDUCTED FROM MONIES OWED THE CONTRACTOR. THE CONTRACTOR SHALL COORDINATE WITH THE UTILITY COMPANIES TO SCHEDULE THE BRACING OF THE POLES.
 - FOR DETAILS NOT SHOWN ON THE DRAWING, AND FOR MATERIALS AND CONSTRUCTION METHODS, USE HOWARD COUNTY DESIGN MANUAL, VOLUME IV, STANDARD SPECIFICATIONS AND DETAILS FOR CONSTRUCTION (LATEST EDITION). THE CONTRACTOR SHALL HAVE A COPY OF VOLUME IV ON THE JOB.
 - WHERE TEST PITS HAVE BEEN MADE ON EXISTING UTILITIES, THEY ARE NOTED BY THE SYMBOL [] AT THE LOCATIONS OF THE TEST PITS. A NOTE OR NOTES CONTAINING THE RESULTS OF THE TEST PIT OR PITS IS INCLUDED ON THE DRAWINGS. EXISTING UTILITIES IN THE VICINITY OF THE PROPOSED WORK FOR WHICH TEST PITS HAVE NOT BEEN DUG SHALL BE LOCATED BY THE CONTRACTOR TWO WEEKS IN ADVANCE OF CONSTRUCTION OPERATIONS AT HIS OWN EXPENSE.
 - THE CONTRACTOR SHALL NOTIFY THE FOLLOWING UTILITY COMPANIES OR AGENCIES AT LEAST FIVE WORKING DAYS BEFORE STARTING WORK ON THESE PLANS.

AT&T	1-800-252-1833
BGE (CONTRACTOR SERVICES)	410-650-4620
BGE (UNDER GROUND DAMAGE CONTROL)	410-650-1400
BUREAU OF UTILITIES	410-313-4900
COLONIAL PIPELINE CO.	410-745-1390
MISS UTILITY	1-800-251-TTTT
STATE HIGHWAY ADMINISTRATION	410-531-5533
VERIZON	1-800-743-0033 / 410-224-4210
 - TREES AND SHRUBS ARE TO BE PROTECTED FROM DAMAGE TO THE MAXIMUM EXTENT. TREES AND SHRUBS LOCATED WITHIN THE CONSTRUCTION AREA STRIP ARE NOT TO BE REMOVED OR DAMAGED BY THE CONTRACTOR.
 - THE CONTRACTOR SHALL REMOVE TREES, STUMPS AND ROOTS ALONG THE LINE OF EXCAVATION. PAYMENT FOR SUCH REMOVAL SHALL BE INCLUDED IN THE UNIT PRICE BID FOR CONSTRUCTION OF THE MAIN.
 - THE CONTRACTOR SHALL NOTIFY THE BUREAU OF HIGHWAYS, HOWARD COUNTY, AT (410)-313-1450 AT LEAST FIVE WORKING DAYS BEFORE OPEN CUTTING OR BORING/JACKING OF ANY COUNTY ROAD FOR LAYING WATER/SEWER MAINS OR HOUSE CONNECTIONS. THE APPROVAL OF THESE DRAWINGS WILL CONSTITUTE COMPLIANCE WITH DPM REQUIREMENTS PER SECTION 10.114(G) OF THE HOWARD COUNTY CODE.

PART II - WATER

- ALL MAINS SHALL BE D.I.P. CLASS 52 UNLESS OTHERWISE NOTED.
- TOPS OF ALL WATER MAINS SHALL HAVE A MINIMUM OF 3'-6" OF COVER UNLESS OTHERWISE NOTED.
- VALVES ADJACENT TO TEES SHALL BE STRAPPED TO TEES.
- ALL FITTINGS SHALL BE BUTTRESSED OR ANCHORED WITH CONCRETE IN ACCORDANCE WITH STANDARD DETAILS UNLESS OTHERWISE PROVIDED FOR ON THE DRAWINGS.
- FIRE HYDRANTS SHALL BE SET TO THE BURY LINE ELEVATIONS SHOWN ON THE DRAWINGS. ALL FIRE HYDRANTS SHALL BE INSTALLED IN ACCORDANCE WITH STANDARD DETAILS. THE SOIL AROUND THE FIRE HYDRANT SHALL BE COMPACTED IN ACCORDANCE WITH SECTION 0200 AND SECTION 0205 OF THE STANDARD SPECIFICATIONS.
- THE CONTRACTOR SHALL NOT OPERATE ANY WATER MAIN VALVES ON THE EXISTING WATER SYSTEM.

PART III - SEWER

- ALL SEWER MAINS SHALL BE D.I.P. OR P.V.C. UNLESS OTHERWISE NOTED.
- ALL MANHOLES SHALL BE 4'-0" INSIDE DIAMETER UNLESS OTHERWISE NOTED.
- FORCE MAINS SHALL BE D.I.P. ONLY.
- MANHOLES SHOWN WITH THE 12" AND 16" WALLS ARE FOR BRICK MANHOLES ONLY.
- MANHOLES DESIGNATED W.T. IN PLAN AND PROFILE SHALL HAVE WATERTIGHT FRAME AND COVER, STANDARD DETAIL 0552. WHERE WATERTIGHT MANHOLE FRAMES AND COVERS ARE USED, SET TOP OF FRAME 1'-6" ABOVE FINISHED GRADE UNLESS OTHERWISE NOTED ON THE DRAWINGS.
- HOUSE(S) WITH THE SYMBOL "C.N.S." INDICATES THE CELLAR CANNOT BE SERVED.

Sediment Control Measures will be implemented in accordance with Section 219 of the Specifications & with SDP-05-148.

REVIEWED FOR HOWARD SOIL CONSERVATION DISTRICT AND MEETS TECHNICAL REQUIREMENT.
Jim Mason 1/9/06
S.D.A. NATURAL RESOURCES CONSERVATION SERVICE

THIS DEVELOPMENT PLAN IS APPROVED FOR SOIL EROSION AND SEDIMENT CONTROL BY THE HOWARD SOIL CONSERVATION DISTRICT.
APPROVED: *John R. Robertson* 1/9/06
HOWARD S.C.D.

DEPARTMENT OF PUBLIC WORKS
HOWARD COUNTY, MARYLAND
M. Smith 12/22/05
CHIEF, BUREAU OF UTILITIES DATE

DEPARTMENT OF PLANNING AND ZONING
HOWARD COUNTY, MARYLAND
John R. Robertson 1/9/06
CHIEF, DEVELOPMENT ENGINEERING DIVISION DATE

GLW GUTSCHICK LITTLE & WEBER, P.A.
CIVIL ENGINEERS, LAND SURVEYORS, LAND PLANNERS, LANDSCAPE ARCHITECTS
3909 NATIONAL DRIVE - SUITE 250 - BURTNSVILLE OFFICE PARK
BURTNSVILLE, MARYLAND 20866
TEL: 301-421-4024 BALT: 410-880-1820 DC/VA: 301-989-2524 FAX: 301-421-4186



DES: klp					
DRN: klp					
CHK: mbt/ckg					
DATE: Dec/05	K.C.I.	1	ASBUILT DATA	10/03/06	
	BY	NO	REVISION	DATE	

TITLE SHEET
SCALE: AS SHOWN
600' SCALE MAP NO. 37 BLOCK NO. 19

SNOWDEN RIVER BUSINESS PARK
SECTION 1 AREA 1
PARCEL 'A-2'
HOWARD COUNTY, MARYLAND
ELECTION DISTRICT No. 6
CONTRACT No. 24-4308-D

GLW FILE No. 04065
SCALE AS SHOWN
SHEET 1 OF 3

SNOWDEN RIVER PARKWAY
(VARIABLE MINOR ARTERIAL R/W 150' MIN.)
FLAT No. 9811; MEHA R/W FLAT No. 41415
VEHICULAR INGRESS/EGRESS TO PARCEL A-2 IS RESTRICTED
ALONG THIS R/W

WATER AND SEWER ABSCUT DATA

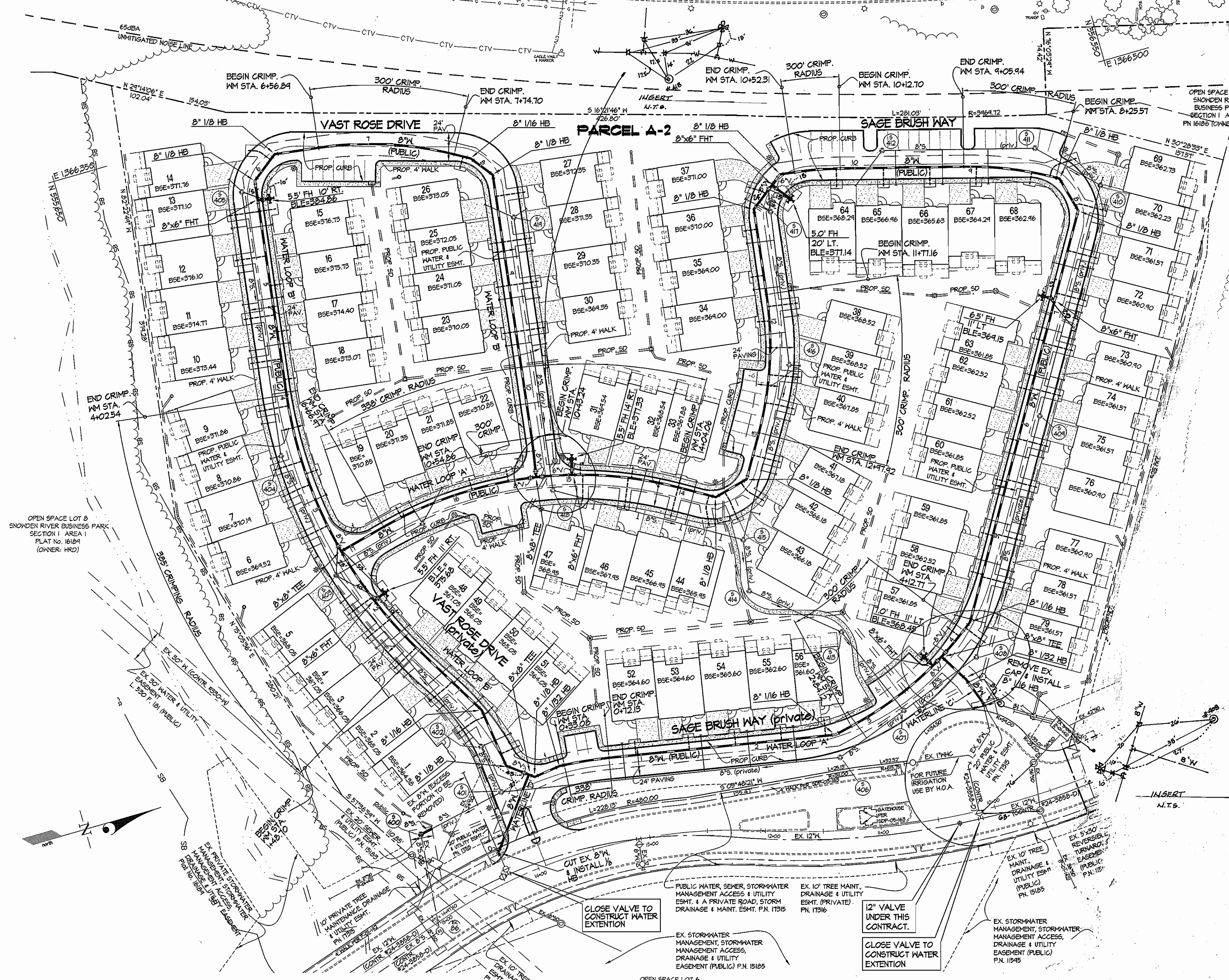
LOT #	FROM	TO	FEET	TO	FEET
1	W/C	S-402	23	S-401	63
2	S/C	"	19	"	63
3	W/C	"	59	"	101
4	S/C	"	48.5	"	89
5	W/C	S-402	9.4	F.H.	66
6	S/C	S-402	60	"	73.5
7	W/C	"	71	"	42
8	S/C	"	36	"	37.5
9	S/C	"	24	"	39
10	W/C	"	4.4	"	88
11	S/C	"	38.5	"	78
12	W/C	"	82.5	S-404	37
13	S/C	"	71.5	"	46
14	W/C	S-404	14	S-403	106
15	S/C	"	10	"	116
16	W/C	"	43.5	I-28	141
17	S/C	"	32.5	I-28	120
18	W/C	"	63	F.H.	142
19	S/C	"	24	"	122
20	W/C	F.H.	100	S-405	110
21	S/C	"	24	"	27
22	W/C	"	61	"	58
23	S/C	"	60	"	69
24	W/C	"	29	"	23
25	S/C	"	42	"	22
26	W/C	"	49	"	36
27	S/C	"	39	"	16
28	W/C	"	10	"	33
29	S/C	"	22	"	22
30	W/C	"	74.5	"	88
31	S/C	"	89	"	97
32	W/C	"	114	"	120
33	S/C	S-404	120	S-403	132
34	W/C	"	68.5	F.H.	156
35	S/C	"	38	F.H.	166
36	W/C	"	24	I-28	80
37	S/C	"	32	I-28	59
38	W/C	S-406	20	I-24	83
39	S/C	"	23	I-24	44
40	W/C	"	54	I-24	37
41	S/C	"	30	I-24	23
42	W/C	"	89	I-24	60
43	S/C	I-22	4.4	M-21	60
44	W/C	"	145	S-412	101
45	S/C	"	27	"	112
46	W/C	S-412	69	I-22	78
47	S/C	"	78	I-22	67
48	W/C	"	21	I-22	114
49	S/C	"	42	I-22	101
50	W/C	"	62	I-25	43
51	S/C	"	27	I-25	77
52	W/C	"	24	I-22	180
53	S/C	"	12	"	185
54	W/C	"	23	"	110
55	S/C	"	33	"	98
56	W/C	"	58	"	72
57	S/C	"	72	"	57
58	W/C	"	28	"	32
59	S/C	"	112	I-22	17
60	W/C	S-416	39	M-21	22
61	S/C	"	48	M-21	21
62	W/C	"	71	M-21	67
63	S/C	"	89	M-21	79
64	W/C	F.H.	25	I-27	22
65	S/C	F.H.	109	I-27	41
66	W/C	S-416	46	S-417	20
67	S/C	"	27	S-417	106
68	W/C	"	89	S-417	60
69	S/C	"	71	"	68
70	W/C	"	122	"	28
71	S/C	"	111	"	34
72	W/C	I-2	23	"	29
73	S/C	"	85	"	25
74	W/C	"	14	"	54
75	S/C	"	28	S-416	42
76	W/C	"	78	"	14
77	S/C	"	68	"	10
78	W/C	"	103	"	37
79	S/C	"	114	"	48
80	W/C	S-415	72	I-27	70
81	S/C	"	62	"	61
82	W/C	"	38	"	39
83	S/C	"	27	"	15
84	W/C	"	18	"	34
85	S/C	"	20	"	24
86	W/C	"	32	"	12
87	S/C	S-415	19	"	18
88	W/C	"	65	"	43
89	S/C	"	55	"	36
90	W/C	"	100	S-416	63
91	S/C	"	24	"	76
92	W/C	"	141	"	27
93	S/C	S-415	120	"	26
94	W/C	F.H.	18	S-403	60
95	S/C	F.H.	24	"	70

CONTINUED

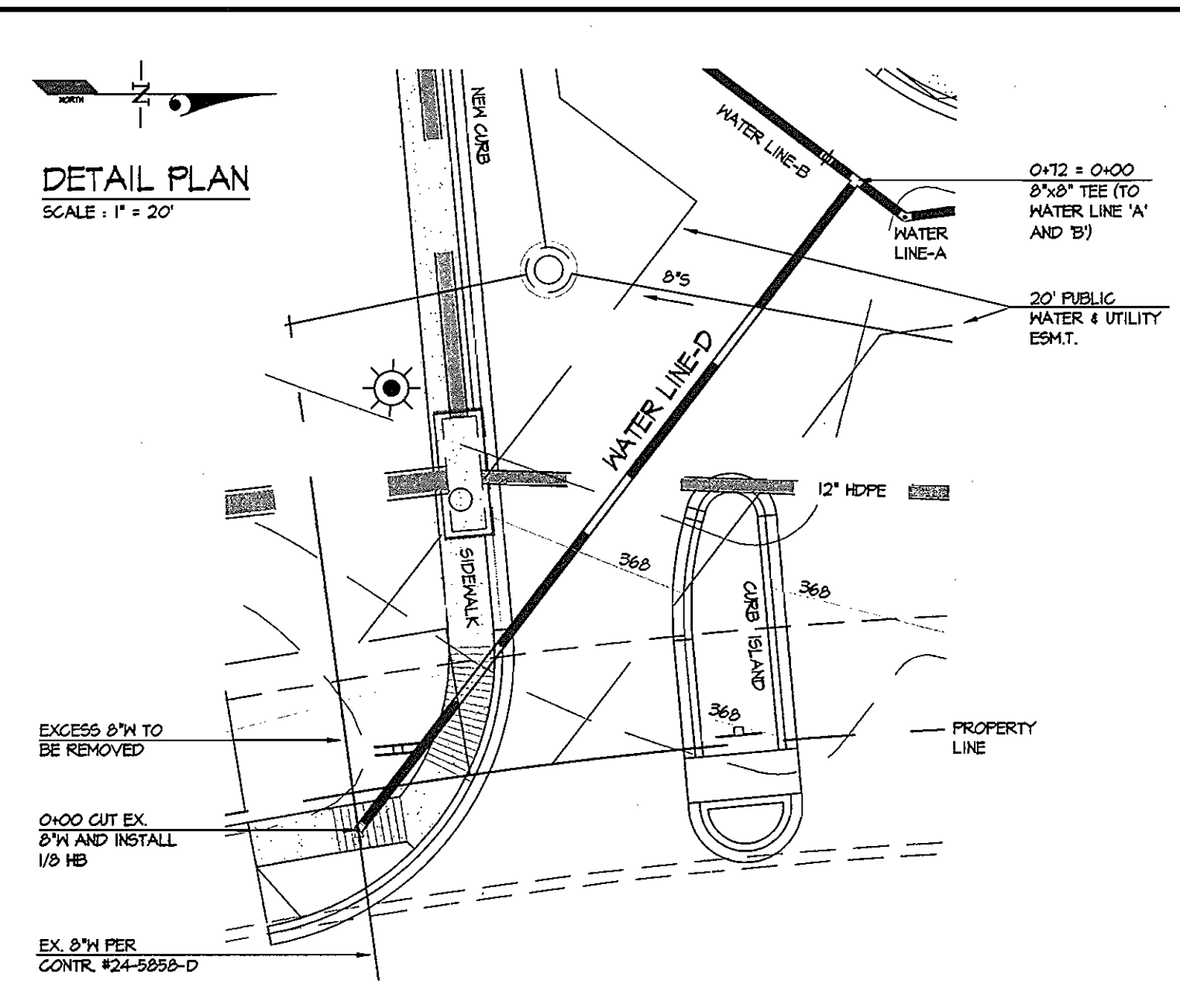
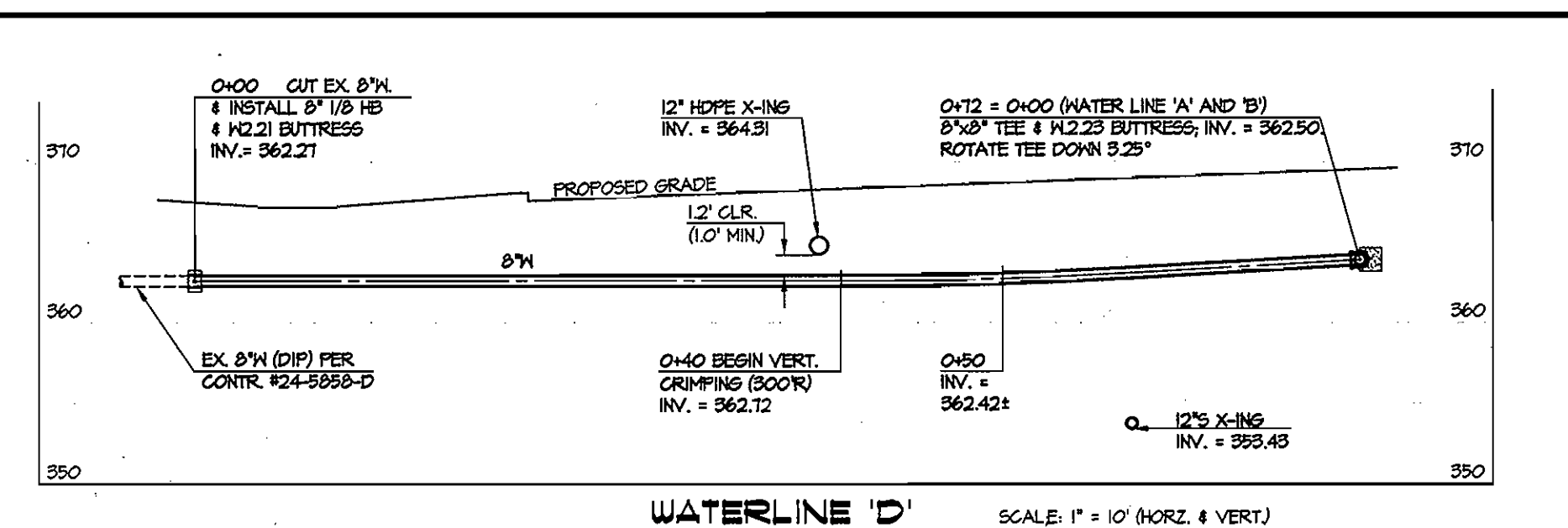
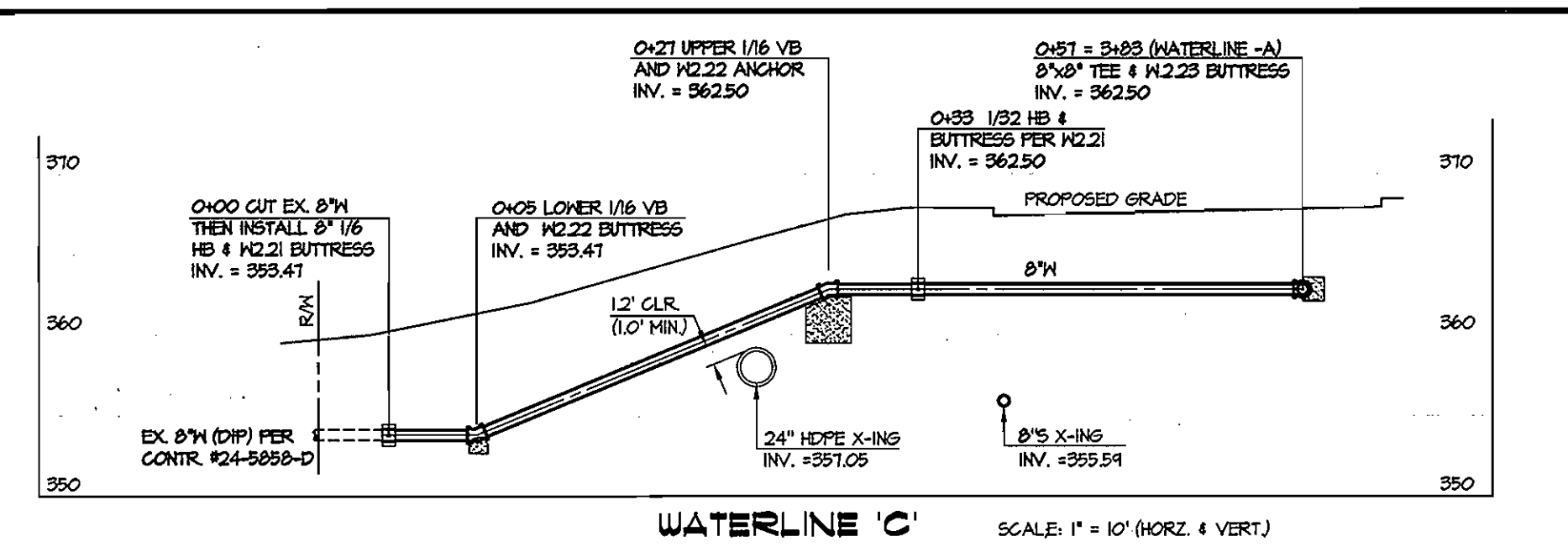
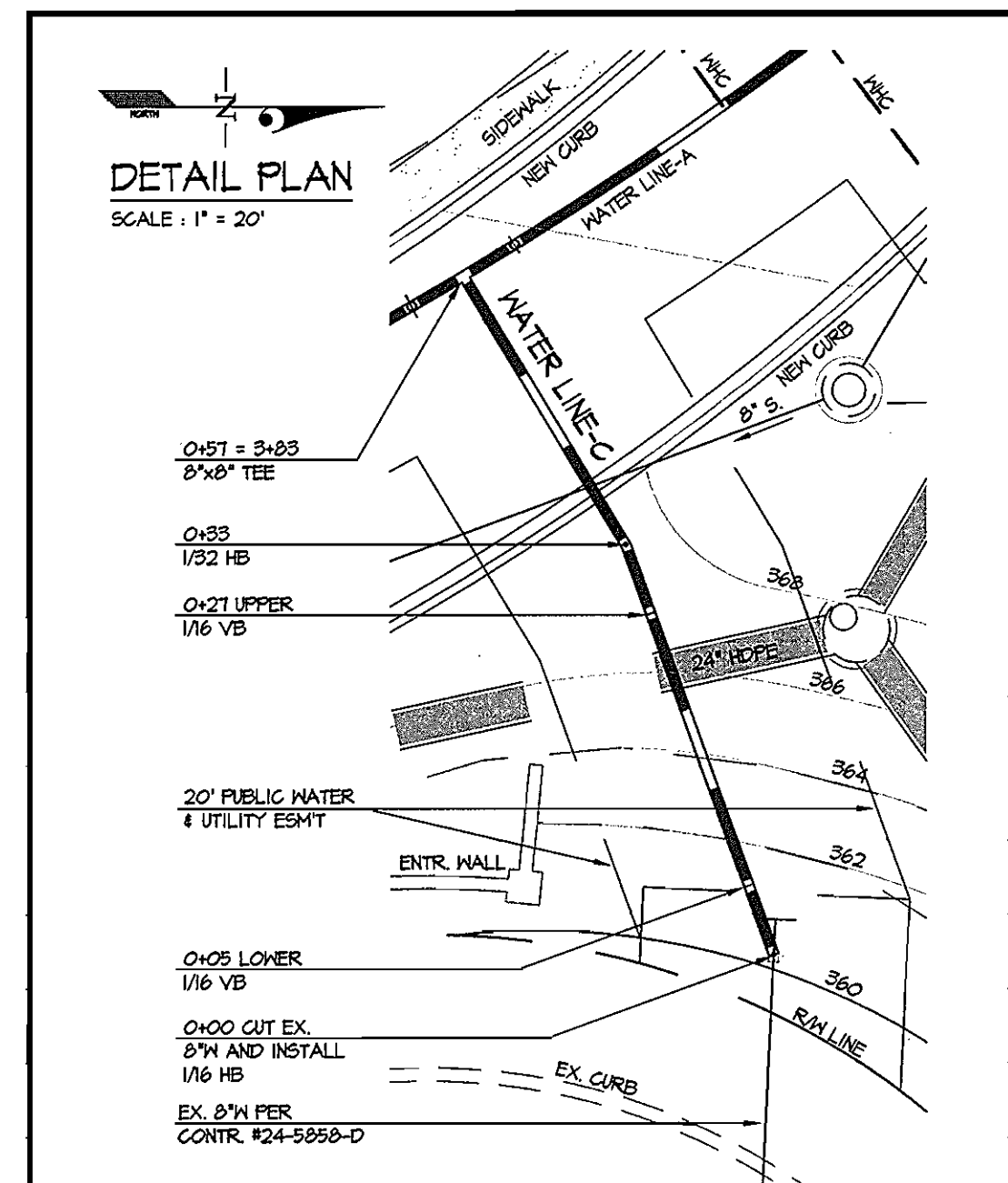
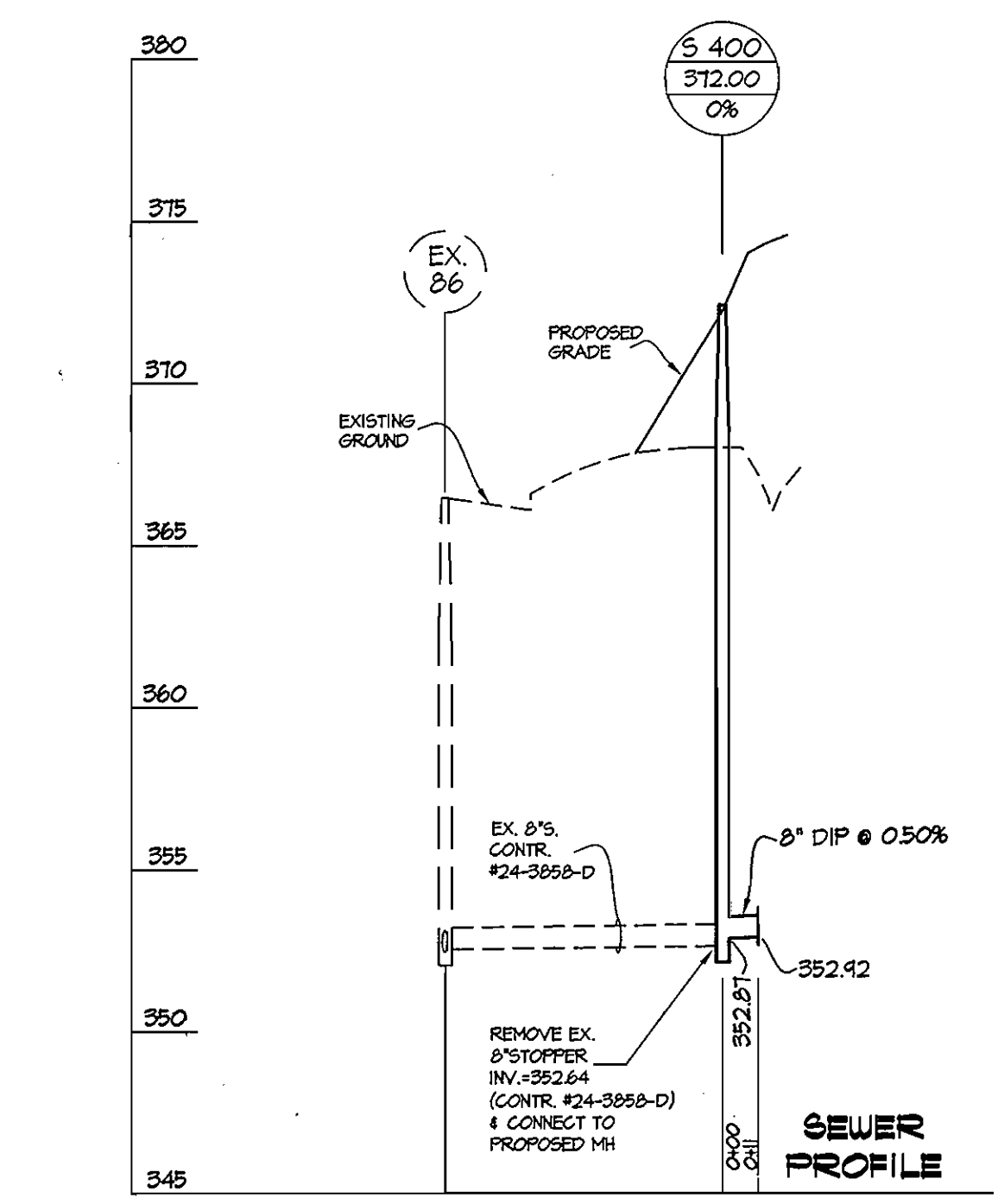
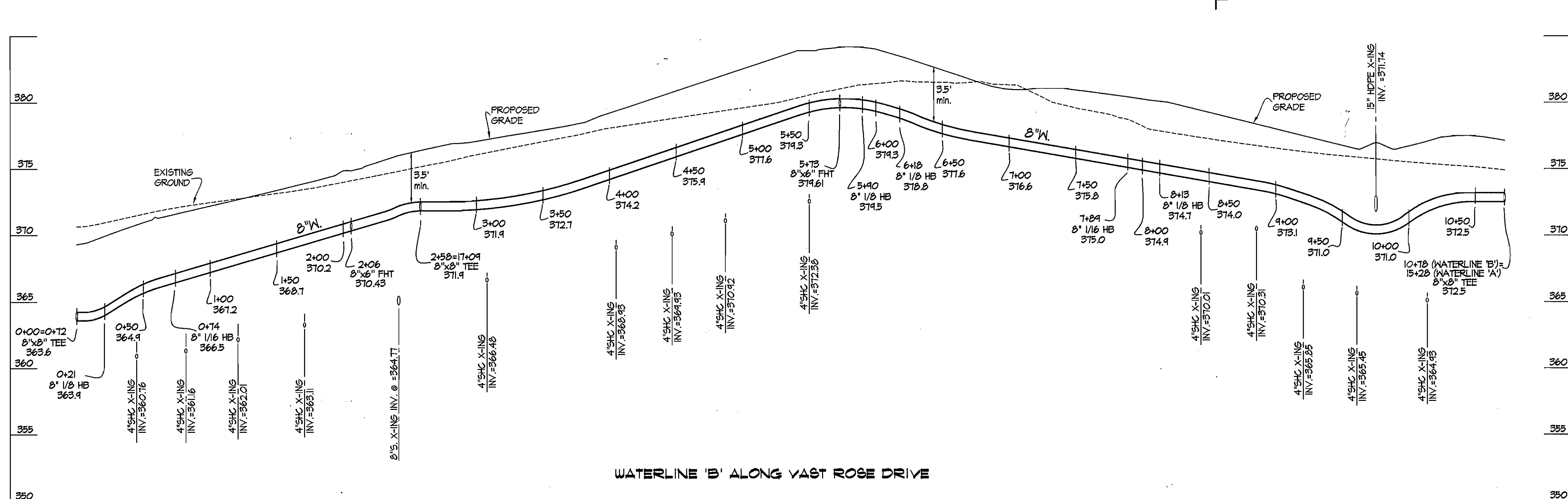
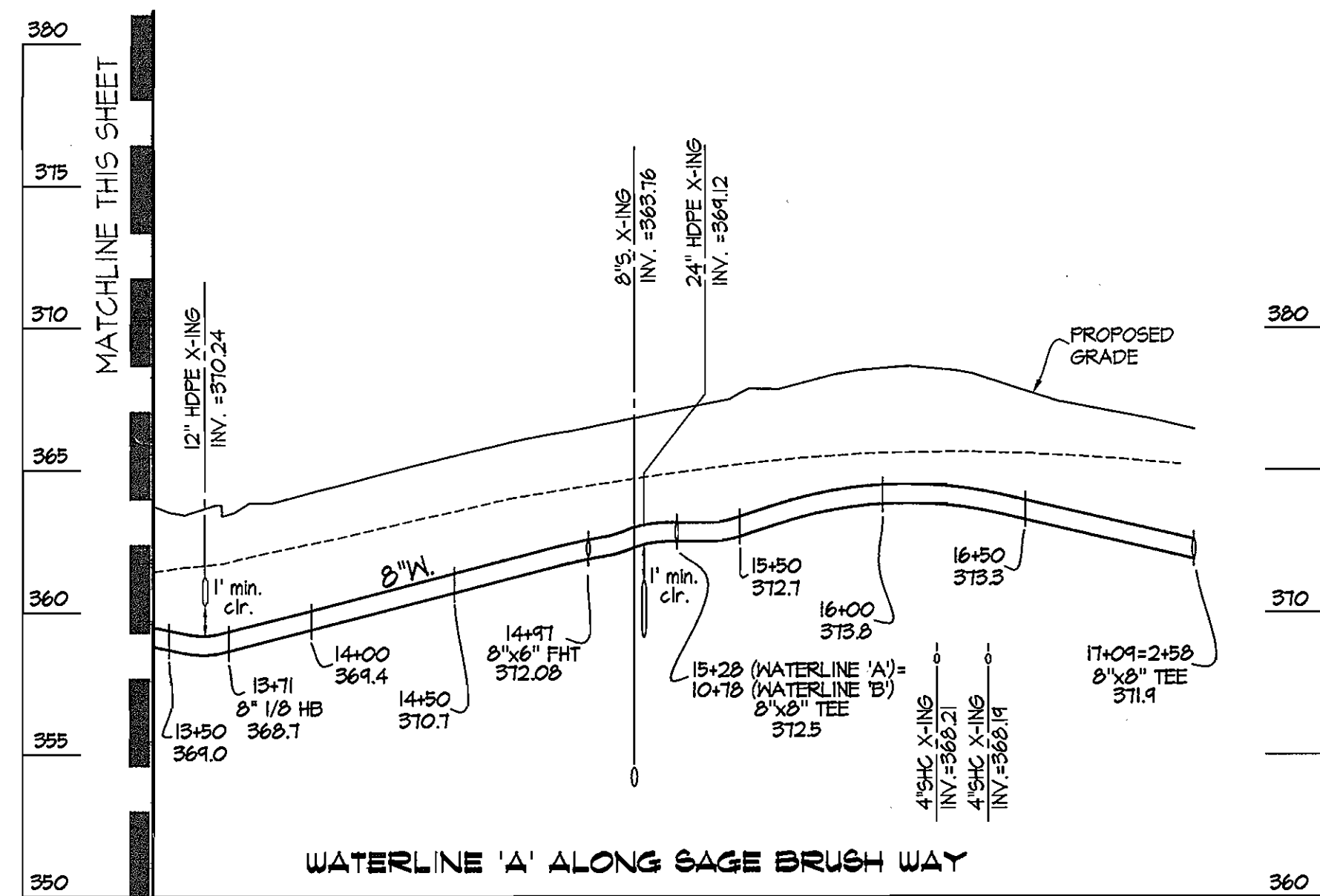
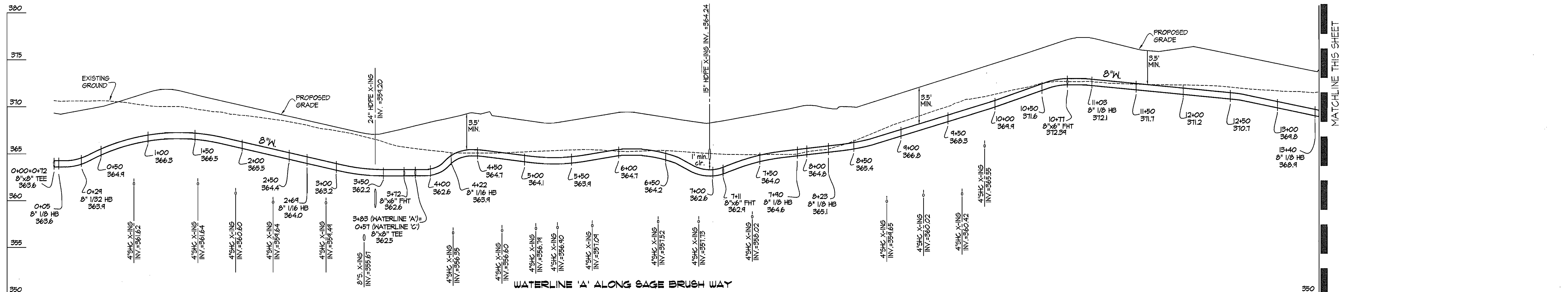
FITTING INFORMATION		
LOCATION	FITTING	NAD 83 COORDINATES
SAGE BRUSH WAY (WATERLINE 'A')		
MM STA. 0+05	8" 1/8 HB	N 555906.33 E 1366460.24
MM STA. 0+21	8" 1/8 HB	N 555924.35 E 1366451.71
MM STA. 2+64	8" 1/8 HB	N 556065.90 E 1366491.54
MM STA. 3+72	8" x6" FHT	N 556263.25 E 1366463.25
MM STA. 3+83	8" x6" TEE	N 556212.51 E 1366451.84
MM STA. 4+22	8" 1/8 HB	N 556304.55 E 1366435.70
MM STA. 7+11	8" x6" FHT	N 556452.06 E 1366681.35
MM STA. 7+40	8" 1/8 HB	N 556442.55 E 1366648.91
MM STA. 8+23	8" 1/8 HB	N 556454.54 E 1366581.72
MM STA. 10+65	8" 1/8 HB	N 556293.54 E 1366511.56
MM STA. 10+77	8" x6" FHT	N 556244.41 E 1366524.54
MM STA. 11+03	8" 1/8 HB	N 556223.89 E 1366543.22
MM STA. 13+40	8" 1/8 HB	N 556053.28 E 1366782.48
MM STA. 13+71	8" 1/8 HB	N 556013.50 E 1366711.08
MM STA. 14+47	8" x6" FHT	N 556004.36 E 1366718.10
MM STA. 15+28	8" x6" TEE	N 555974.23 E 1366711.51
MM STA. 17+04	8" x6" TEE	N 555941.82 E 1366726.75

FITTING INFORMATION		
LOCATION	FITTING	NAD 83 COORDINATES
VAST ROSE DRIVE (WATERLINE 'B')		
MM STA. 0+21	8" 1/8 HB	N 555885.36 E 1366444.28
MM STA. 0+74	8" 1/8 HB	N 555978.32 E 1366422.55
MM STA. 2+06	8" x6" FHT	N 555815.53 E 1366715.28
MM STA. 2+58	8" x6" TEE	N 555994.82 E 1366726.73
MM STA. 3+73	8" x6" FHT	N 555914.54 E 1366444.54
MM STA. 5+40	8" 1/8 HB	N 555816.83 E 1366291.46
MM STA. 6+18	8" 1/8 HB	N 555834.41 E 1366302.20
MM STA. 7+84	8" 1/8 HB	N 556000.82 E 1366430.44
MM STA. 8+15	8" 1/8 HB	N 556015.40 E 1366444.53
MM STA. 10+78	8" x6" TEE	N 555974.23 E 1366711.51

LOT #	FROM	TO	FEET	TO	FEET
49	W/C	F.H.	26	S402	63
50	S/C	F.H.	24	S402	74
51	W/C	I-45	51	"	36
52	S/C	"	50	"	44
53	W/C	"	38	"	32
54	S/C	"	38	"	28
55	W/C	I-22	86	S-401	122
56	S/C	"	77	"	111
57	W/C	"	125	S-403	132
58	S/C	"	136	"	121
59	W/C	"	147	"	24
60	S/C	S-407	48	S-406	40
61	W/C	F.H.	32	S-408	37
62	S/C	F.H.	49	S-405	40
63	W/C	F.H.	82	"	78
64	S/C	F.H.	59	"	89
65	W/C	I-2	40	S-409	110
66	S/C	"	33	"	100
67	W/C	"	42	"	67
68	S/C	"	35	"	74
69	W/C	I-2	72	"	34
70	S/C	I-2	61	"	44
71	W/C	F.H.	81	"	30
72	S/C	"	68	"	38
73	W/C	"	37	"	66
74	S/C	"	26	S-407	77
75	W/C	"	42	S-412	52
76	S/C	"	57	"	38
77	W/C	"	81	"	31
78	S/C	F.H.	22	"	32
79	W/C	S-411	27	"	51
80	S/C	"	36	"	59
81	W/C	"	61	"	85
82	S/C	"	52	"	24
83	W/C	S-411	32	S-410	63
84	S/C	S-410	101	"	70
85	W/C	"	30	S-411	38
86	S/C	"	10	"	64
87	W/C	"	24	"	83
88	S/C	"	37	"	89
89	W/C	"	74	"	50
90	S/C	S-410	101	"	39
91	W/C	S-409	112	"	36
92	S/C	"	63	"	53
93	W/C	"	74	"	46
94	S/C	"	23	"	88
95	W/C	"	28	"	74
96	S/C	"	23	"	104
97	W/C	"	36	F.H.	112
98	S/C	"	51.5	I-2	25
99	W/C	S-409	63	"	15
100	S/C	S-408	107	"	10
101	W/C	S-408	122	"	26
102	S/C	"	70	"	92
103	W/C	"	81	"	31
104	S/C	S-408	19	I-2	116



DRIED EARTH BOULEVARD
(LOCAL PUBLIC TO CUL-DE-SAC,
then PRIVATE BEYOND)
PAVEMENT WIDTH VARIABLE, 38' MIN.,
R/W WIDTH VARIABLE, 60' MIN.



DEPARTMENT OF PUBLIC WORKS
HOWARD COUNTY, MARYLAND

DEPARTMENT OF PLANNING AND ZONING
HOWARD COUNTY, MARYLAND

GLWGUTSCHICK LITTLE & WEBER, P.A.
CIVIL ENGINEERS, LAND SURVEYORS, LAND PLANNERS, LANDSCAPE ARCHITECTS
3909 NATIONAL DRIVE - SUITE 250 - BURTONSVILLE OFFICE PARK
BURTONSVILLE, MARYLAND 20866
TEL: 301-421-4024 BALT: 410-883-1820 DC/VA: 301-989-2524 FAX: 301-421-4188

DES:	klp/oot				
DRN:	klp				
CHK:	mbl/dkg				
AUG. DATE:	2005	K/1	1	ASBUILT DATA	10/04/05
BY:	NO			REVISION	

WATER EXTENSION PLAN
SCALE: 1" = 50' VERT.
1" = 5' HORZ.
600' SCALE MAP NO. 37 BLOCK NO. 19

SNOWDEN RIVER BUSINESS PARK
SECTION 1 AREA 1
PARCEL A-2
HOWARD COUNTY, MARYLAND
ELECTION DISTRICT No. 6
CONTRACT No. 24-4308-D

SCALE AS SHOWN
SHEET 3 OF 3

GLW FILE #04065
WATER PROF.dwg