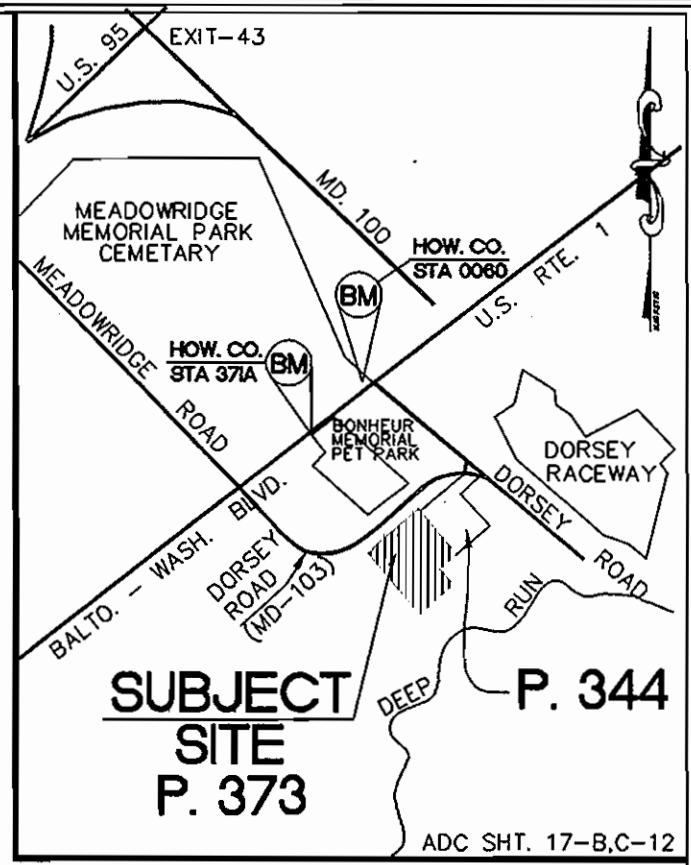


PUBLIC WATER AND SEWER PLANS

DORSEY INDUSTRIES, SAVAL FOODS.

HOWARD COUNTY, MARYLAND

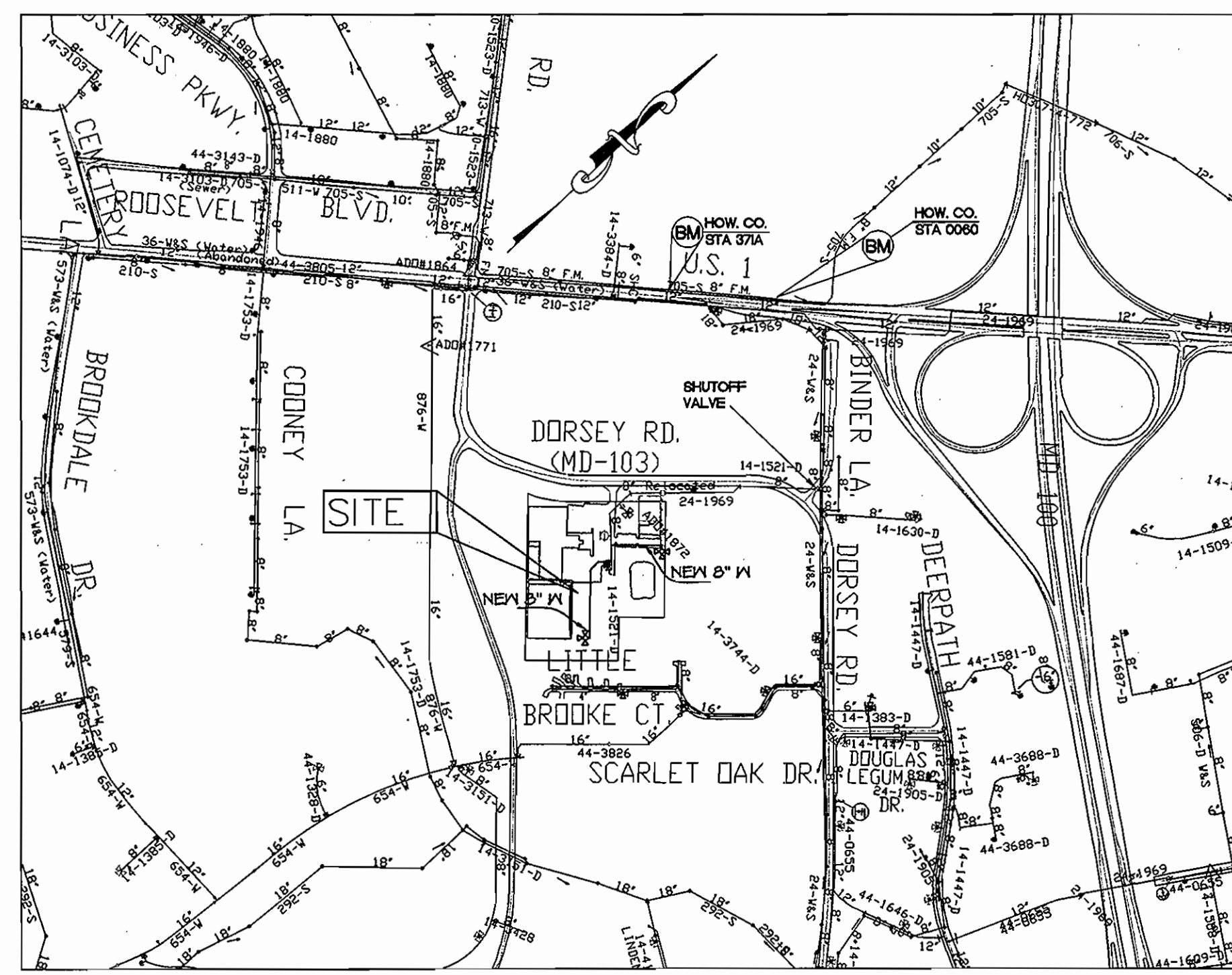
CONTRACT NO. 14-4289-D



WATER & SEWER COUNTY CODE	
WATER CODE:	B-01
SEWER CODE:	2320000
TEST GRADIENT:	550'

TYPE OF BUILDING:	WAREHOUSE / OFFICE
NO. OF LOTS/PARCELS:	2
NO. OF WATER HOUSE CONNECTIONS:	2
NO. OF SEWER HOUSE CONNECTIONS:	1
DRAINAGE AREA:	PATAPSCO
TREATMENT PLANT:	PATAPSCO

QUANTITIES				
NAME OF UTILITY CONTRACTOR : WHEELER CONSTRUCTION				
SURVEY AND DRAFTING DIVISION AS-BUILT DATE :				
ITEMS	QUANTITIES ESTIMATED	AS-BUILT		
		QUANTITIES	TYPE	MANUFACTURER/SUPPLIER
8" 1/2 HB	2	2	D.I.P.	U.S. PIPE / BR3
6" VALVE & VAULT	3	3	"	MUELLER / BR3
8" X6" FH TEE	3	3	"	U.S. PIPE / BR3
FIRE HYDRANT	3	3	"	MUELLER CO / BR3
8" X8" TEE	2	2	"	U.S. PIPE / BR3
8" VALVE & VAULT	2	2	"	MUELLER CO / BR3
8" TAPPING SLEEVE VALVE & VAULT	2	2	"	ROMAC / BR3
6" WATER	46.60 LF	46 FT	D.I.P. CL 52	GRIFFIN PIPE / BR3
8" WATER	677 LF	677	"	"



LOCATION MAP
SCALE : 1"=600'

GENERAL NOTES

- PART I - GENERAL**
- Approximate locations of existing mains are shown. The contractor shall take all necessary precautions to protect existing mains and services and maintain uninterrupted service. Any damage incurred shall be repaired immediately to the satisfaction of the Engineer at the contractor's expense.
 - Topographic field surveys were performed on 06/22/04 by Colbert Matz Rosenfelt, Inc.
 - Horizontal and Vertical Survey Controls:
 - The coordinates shown on the drawing are based on Maryland State Reference System, NAD 83/81 as projected by Howard County Geodetic Control Station No. 0060, and No. 371a.
 - All vertical controls are based on NAVD 88. Vertical controls provided on the drawing are:

HOWARD CO. GEODETIC CONTROL: STA. NO. 0060 DESCRIPTION: STAMPED DISC SET ON CONCRETE CYLINDER N 552649.204 E 1390355.570 ELEV.: 146.737	HOWARD CO. GEODETIC CONTROL: STA. NO. 371a DESCRIPTION: 3/4" IRON ROD W/ 4" STAMPED ALUMINUM CAP. N 559315.159 E 137982.120 ELEV.: 146.762
--	---
 - All pipe elevations shown are invert elevations unless otherwise noted on the plans.
 - Clear all utilities by a minimum of 12". Clear all poles by 5'-0" minimum or tunnel as required unless otherwise noted. The owner has contacted the utility companies and has made arrangements for bracing of poles as shown on drawings. In the event the contractor's work requires the bracing of additional poles, any cost incurred by the owner for bracing of additional poles or damages shall be deducted from monies owed the contractor. The contractor shall coordinate with the utility companies to schedule the bracing of the poles.
 - For details not shown on the drawing, and for materials and construction methods use Howard County Design Manual, Volume IV, Standard Specifications and Details for Construction (Latest Edition). The contractor shall have a copy of Volume IV on the job.
 - Where test pits have been made on existing utilities, they are noted by the symbol at the locations of the test pits. A note or notes containing the results of the test pit or pits is included on the drawings. Existing utilities in the vicinity of the proposed work for which test pits have not been dug shall be located by the contractor two weeks in advance of construction operations at his own expense.
 - The contractor shall notify the following utility companies or agencies at least five working days before starting work shown on these plans:

State Highway Administration BGE(Construction Services) BGE(Emergency) Miss Utility Colonial Pipeline Company Bureau of Utilities AT&T Verizon	410.531.5593 410.650.4630 410.685.1400 1.800.251.7777 410.745.1940 410.313.4400 1.800.252.1133 1.800.749.0093/ 410.224.4210
---	--
 - Trees and shrubs are to be protected from damage to the maximum extent. Trees and shrubs located within the construction strip are not to be removed or damaged by the contractor.
 - The contractor shall remove trees, stumps and roots along line of excavation. Payment for such removal shall be included in the unit price bid for the construction of the main.
 - The contractor shall notify the Bureau of Highways, Howard County, at 410.313.7450 at least five working days before open cutting or boring/jacking of any County road for laying water/sewer mains or house connections. The approval of these drawings will constitute compliance with DPM requirements per Section 18.114(a) of the Howard County Code.
- PART II - WATER**
- All water mains shall be D.I.P. Class 52 unless otherwise noted.
 - Tops of all water mains shall have a minimum of 3'-6" of cover unless otherwise noted.
 - Valves adjacent to trees shall be strapped to trees.
 - All fittings shall be buttressed or anchored with concrete in accordance with Standard Details unless otherwise provided for on the drawings.
 - Fire hydrants shall be set to the bury line elevations shown on the drawings. All fire hydrants shall be installed in accordance with Standard Details. The soil around the fire hydrant shall be compacted in accordance with Section 1000 and Section 1005 of the Standard Specifications.
 - The Contractor shall not operate any water main valves on the existing water system.

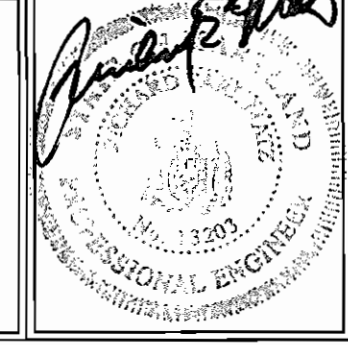
SEDIMENT CONTROL MEASURES WILL BE IMPLEMENTED IN ACCORDANCE WITH SECTION 219 OF THE STANDARD SPECIFICATIONS AND WITH SITE DEVELOPMENT PLANS SDP-05-93

THIS DEVELOPMENT IS APPROVED FOR SOIL EROSION AND SEDIMENT CONTROL BY THE HOWARD COUNTY SOIL CONSERVATION DISTRICT. <i>John R. Roberts</i> 7/12/05 SOIL CONSERVATION DISTRICT	REVIEWED FOR HOWARD COUNTY SOIL CONSERVATION DISTRICT AND MEETS TECHNICAL REQUIREMENTS. <i>Jim Meyer</i> 7/12/05 SOIL CONSERVATION DISTRICT
---	---

DEPARTMENT OF PUBLIC WORKS
HOWARD COUNTY, MARYLAND
Rita...
CHIEF, BUREAU OF UTILITIES

DEPARTMENT OF PLANNING & ZONING
HOWARD COUNTY, MARYLAND
... 7/21/05
CHIEF, DEVELOPMENT ENGINEERING DIVISION

Colbert Matz Rosenfelt, Inc.
Engineers * Surveyors * Planners
2835 Smith Avenue, Suite G
Baltimore, Maryland 21209
Telephone: (410) 653-3838
Facsimile: (410) 653-7953



DESIGN BY: SR/KML	
DRAWN BY: SR	
CHECKED BY: REM	
DATE: 6/30/05	
BY NO. K.C. 1	ASBUILT DATA
REVISION	

WATER AND SEWER
COVER SHEET

600' SCALE MAP NO.: 37.43 BLOCK NO.:

DORSEY INDUSTRIES, SAVAL FOODS.
WAREHOUSE / OFFICE

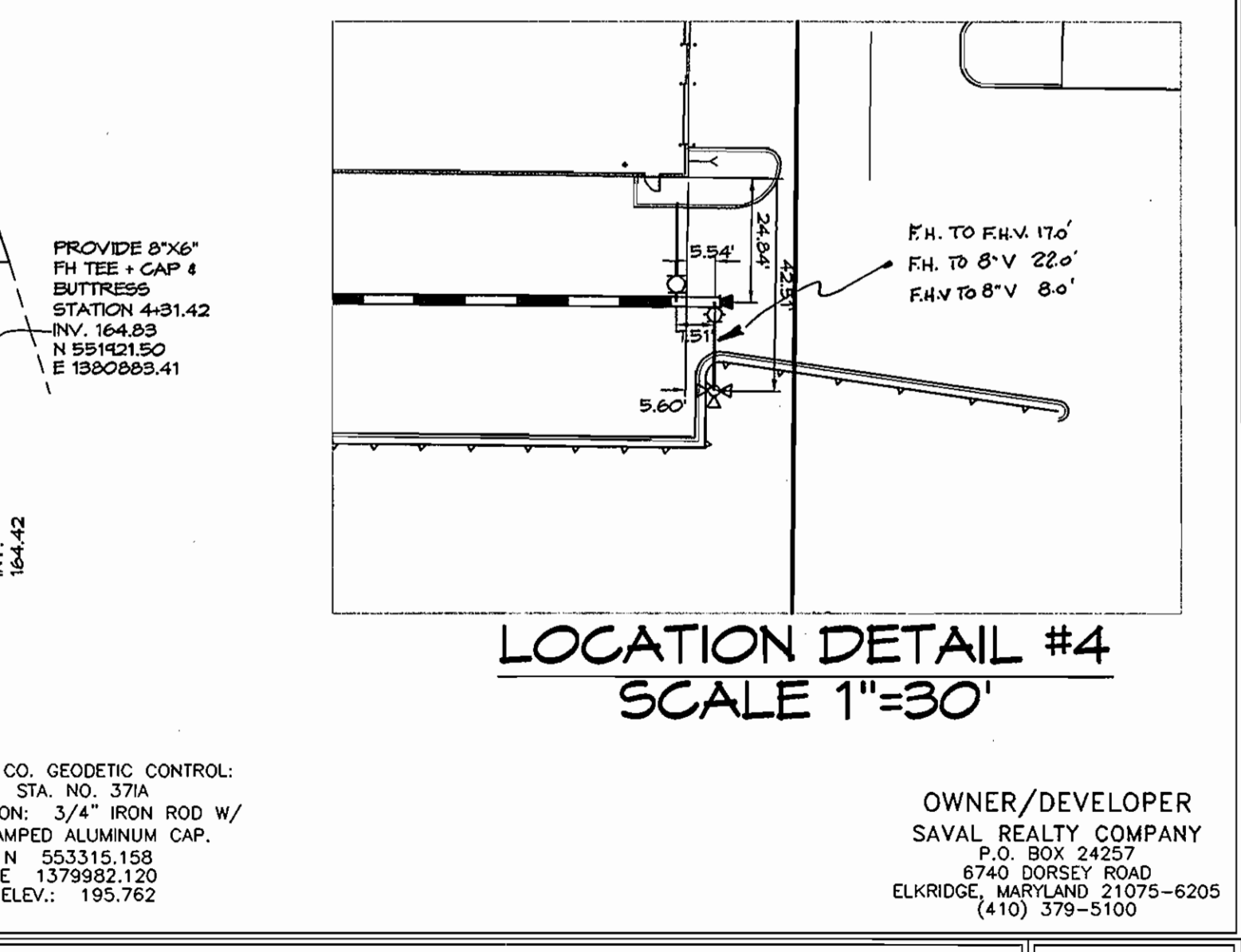
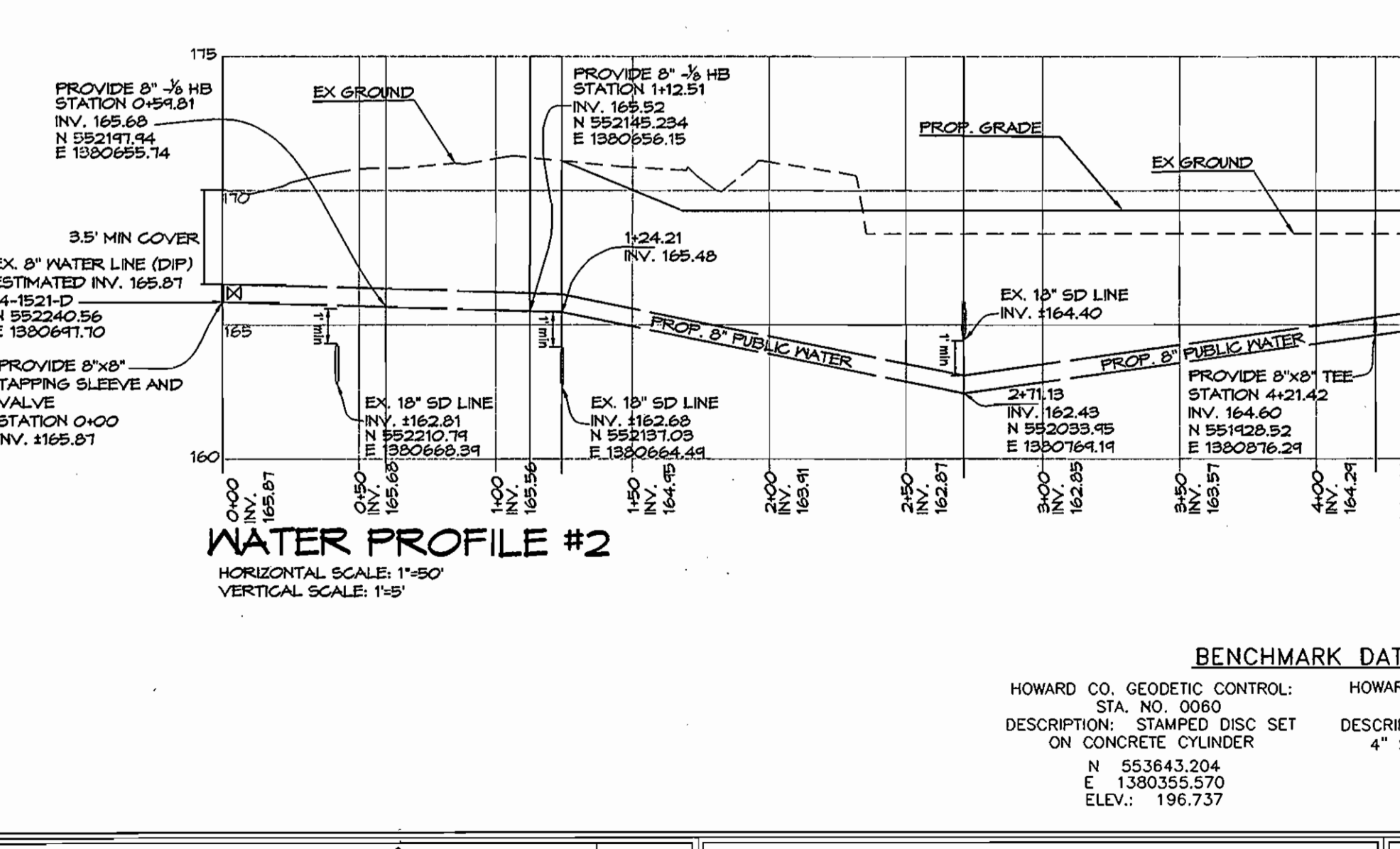
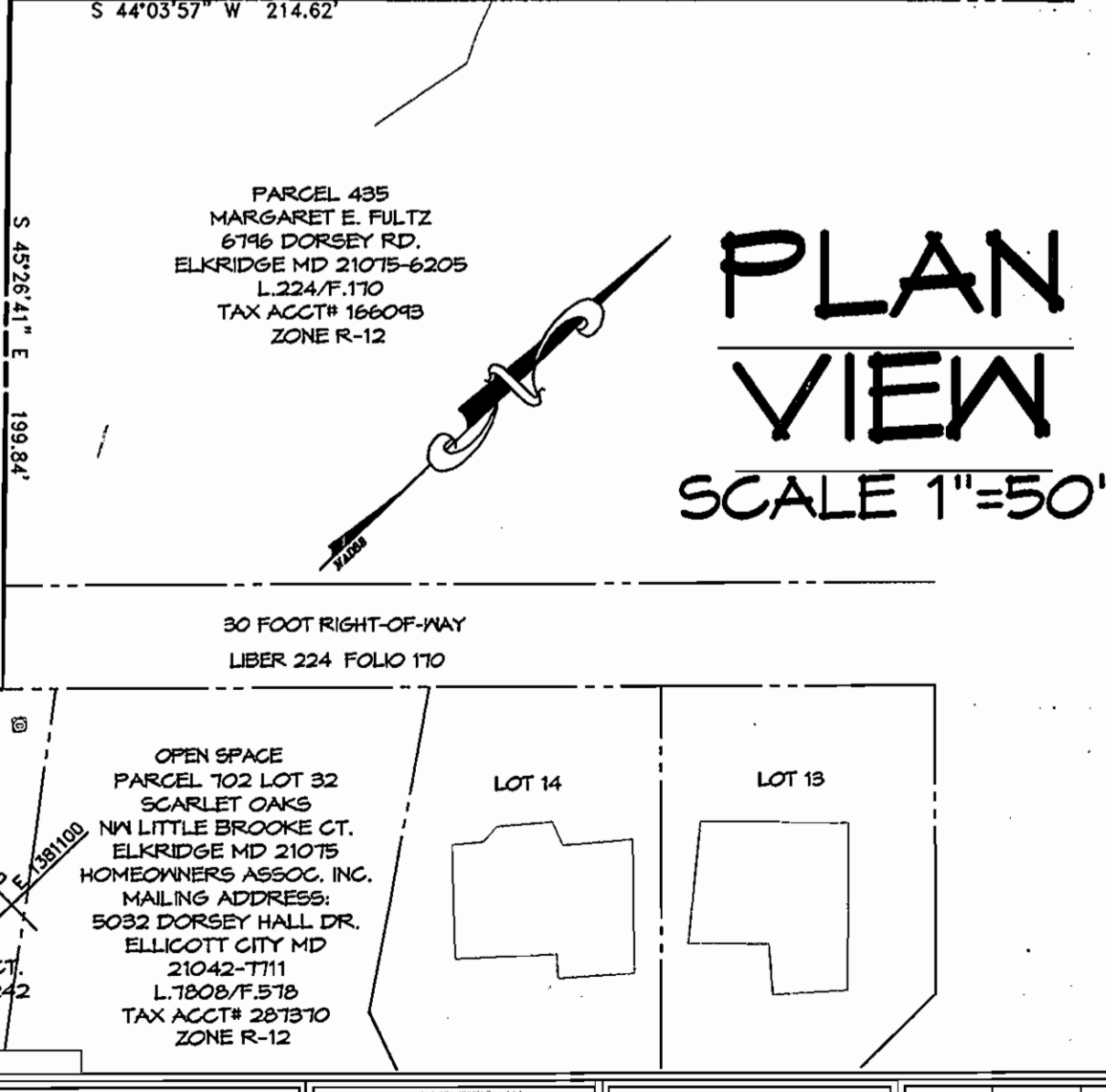
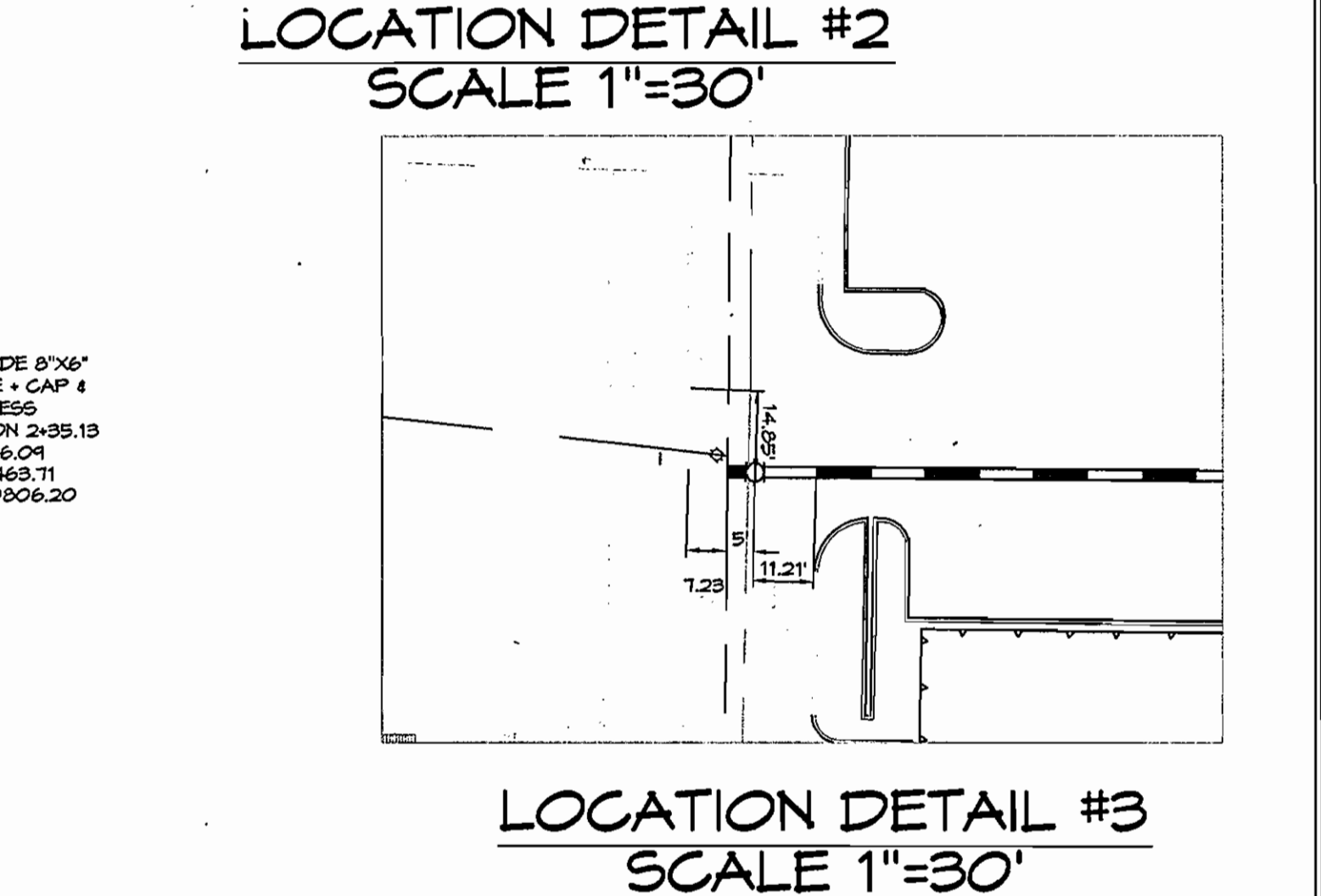
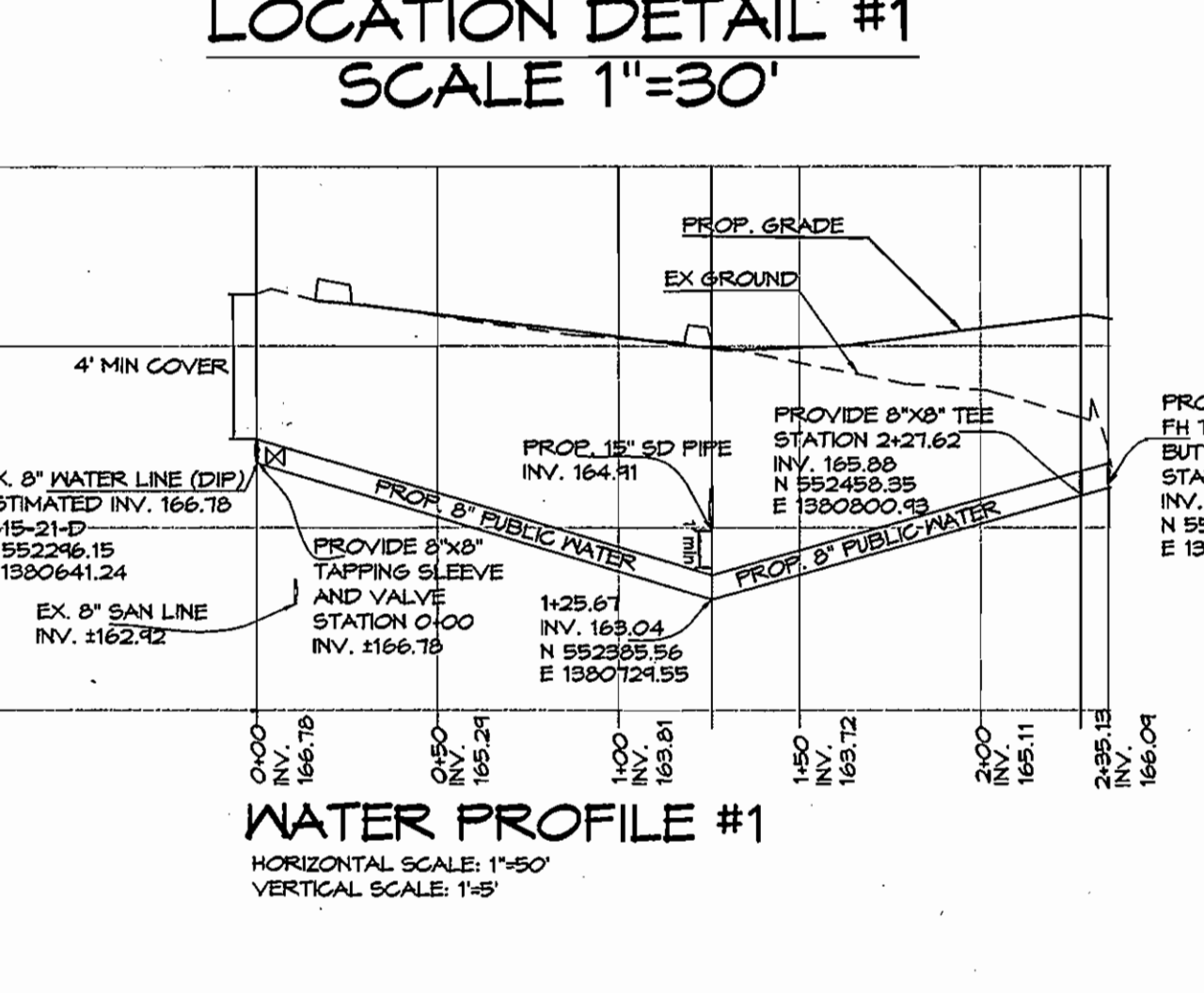
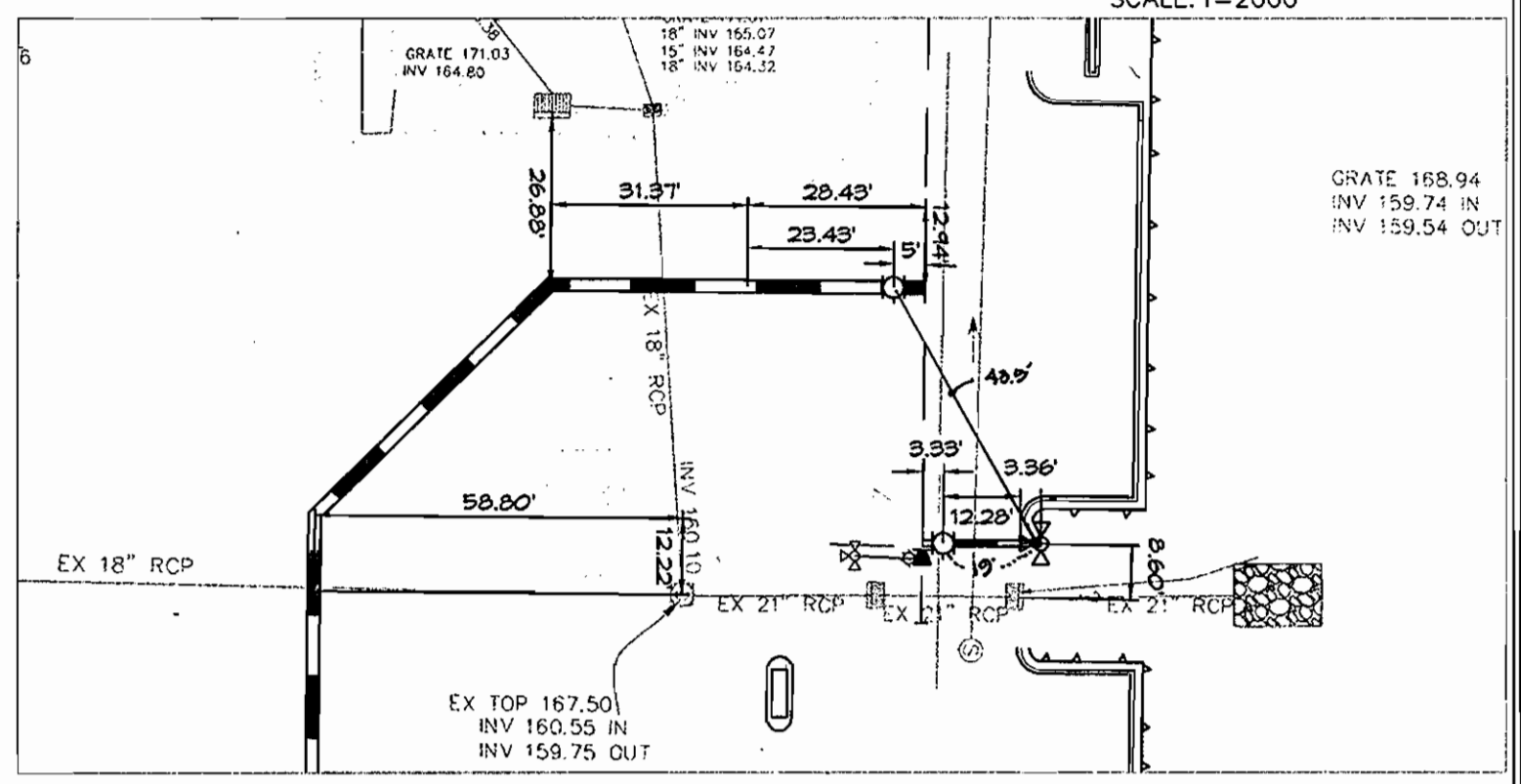
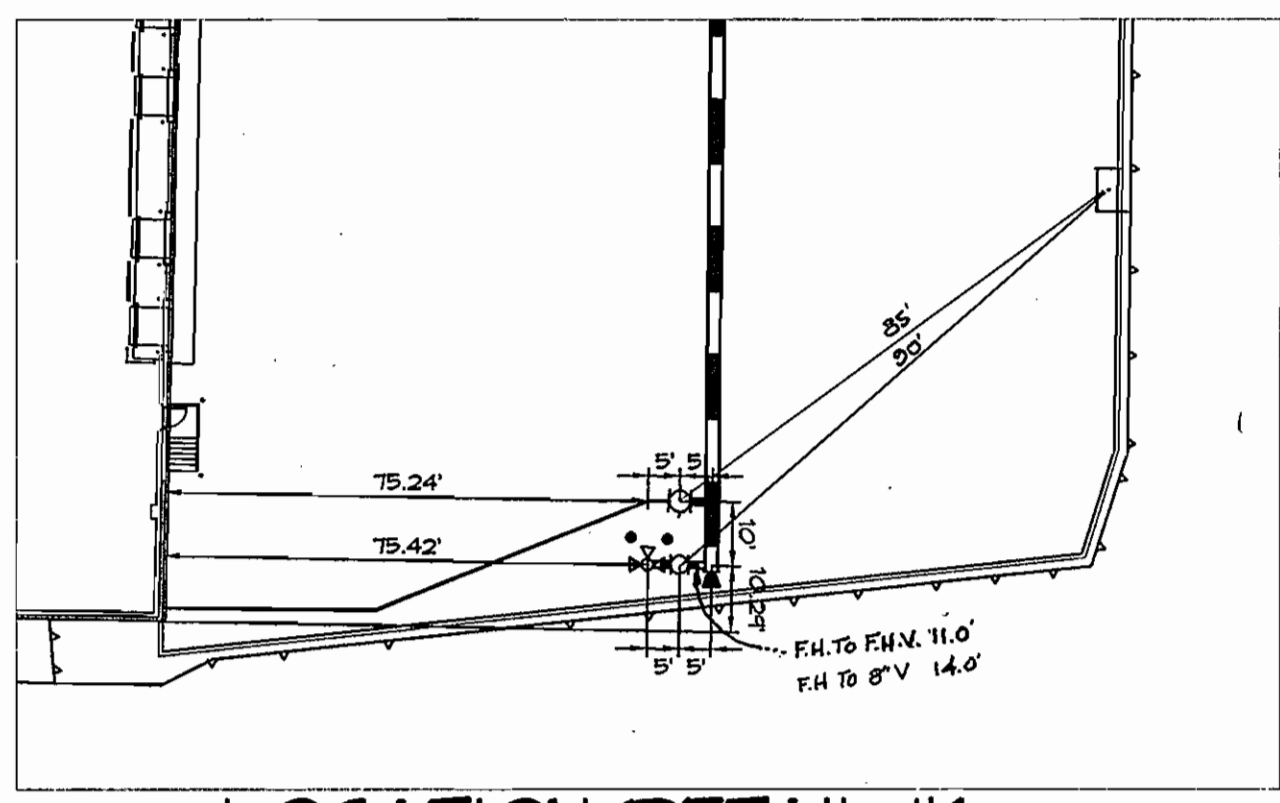
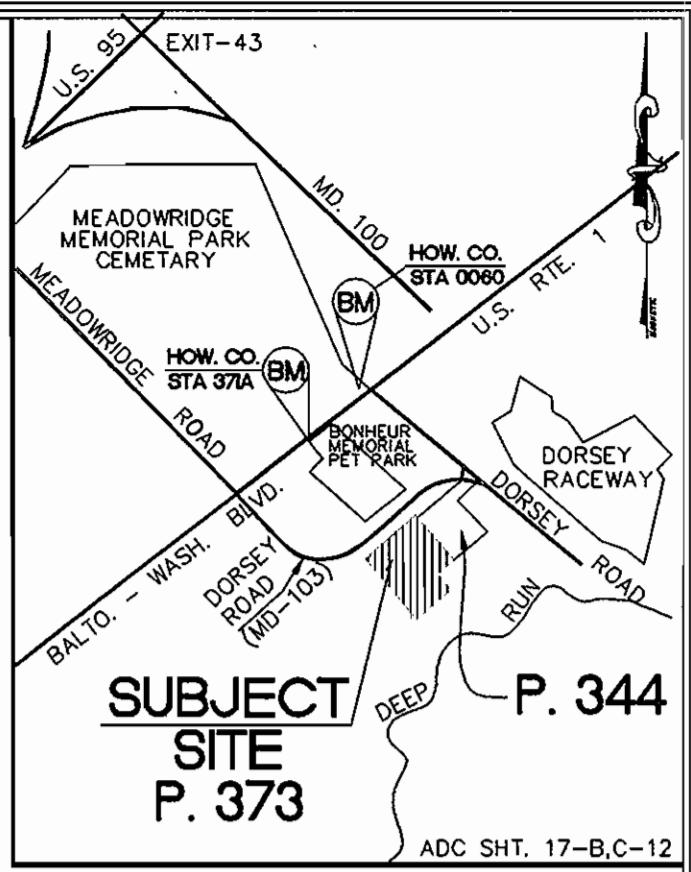
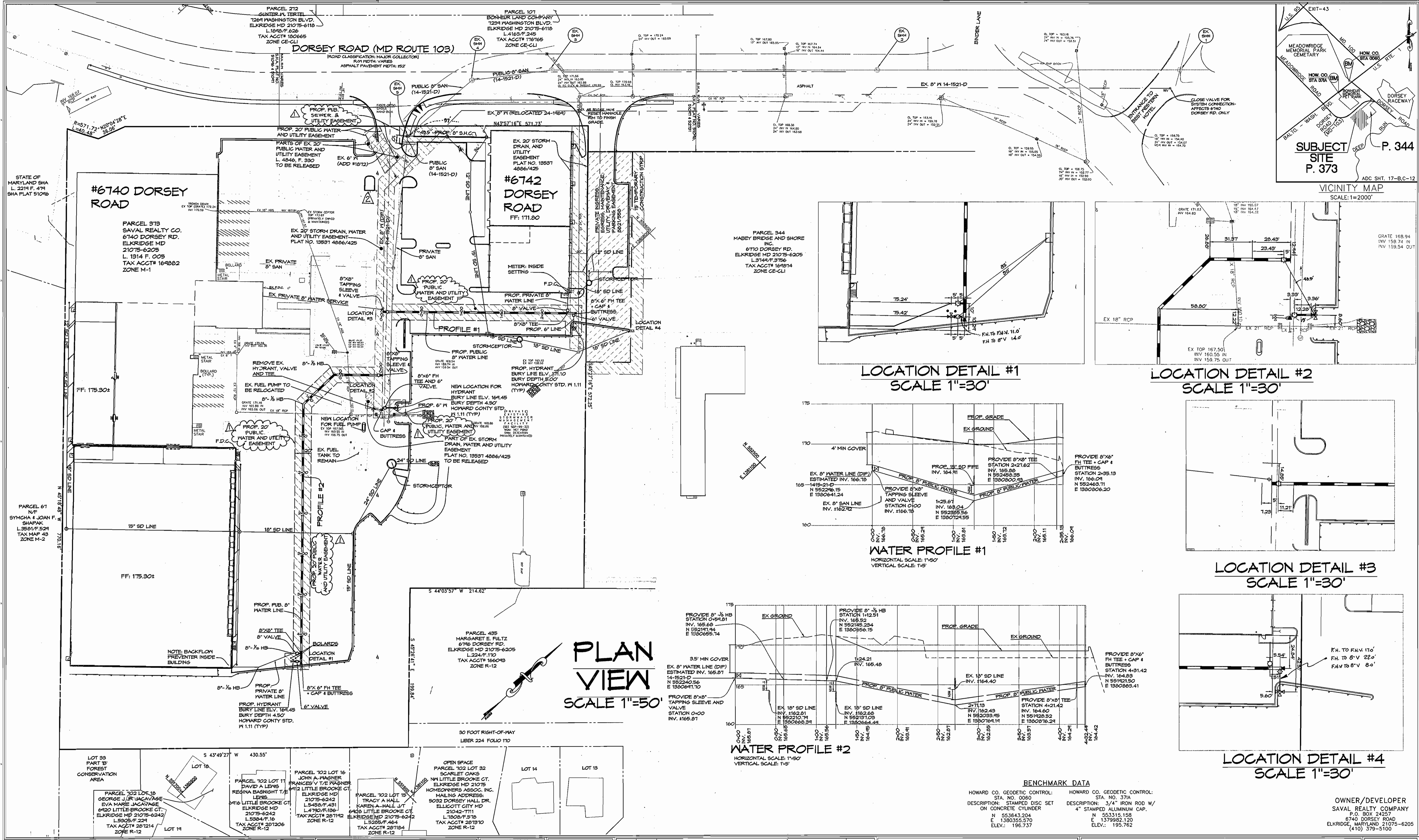
CONTRACT NO. 14-4289-D

TAX MAP 43 GRID 5
1st ELECTION DISTRICT

PARCEL 373
HOWARD COUNTY, MARYLAND

SCALE AS SHOWN
SHEET NO. 1 OF 2

N:\2005\proj\14-4289\14-4289-001.dwg 6/26/2005 10:50:30 AM EDT



BENCHMARK DATA

HOWARD CO. GEODETIC CONTROL: STA. NO. 0080 DESCRIPTION: STAMPED DISC SET ON CONCRETE CYLINDER ELEV.: 196.737	HOWARD CO. GEODETIC CONTROL: STA. NO. 37A DESCRIPTION: 3/4" IRON ROD W/ 4" STAMPED ALUMINUM CAP. ELEV.: 195.762
--	---

OWNER/DEVELOPER
SAVAL REALTY COMPANY
P.O. BOX 24257
6740 DORSEY ROAD
ELK RIDGE, MARYLAND 21075-6205
(410) 379-5100

DEPARTMENT OF PUBLIC WORKS
HOWARD COUNTY, MARYLAND

DEPARTMENT OF PLANNING & ZONING
HOWARD COUNTY, MARYLAND

Colbert Matz Rosenfelt, Inc.
Engineers * Surveyors * Planners
2835 Smith Avenue, Suite G
Baltimore, Maryland 21209
Telephone: (410) 653-3838
Facsimile: (410) 653-7953

DESIGN BY: SR/KML		
DRAWN BY: SR		
CHECKED BY: REM		
DATE: 6-30-05		
CMR 2	DELETE EASEMENT	9-16-05
CMR 1	REVISE EASEMENT TITLES	8-2-05
BY NO.	REVISION	DATE

**WATER AND SEWER
PLAN & PROFILE**

600' SCALE MAP NO.: 37.43 BLOCK NO.:

DORSEY INDUSTRIES, SAVAL FOODS.
WAREHOUSE/ OFFICE

CONTRACT NO. 14-4289-D

TAX MAP 43 GRID 5
1st ELECTION DISTRICT

PARCEL 373
HOWARD COUNTY, MARYLAND

SCALE AS SHOWN

SHEET NO. 2 OF 2