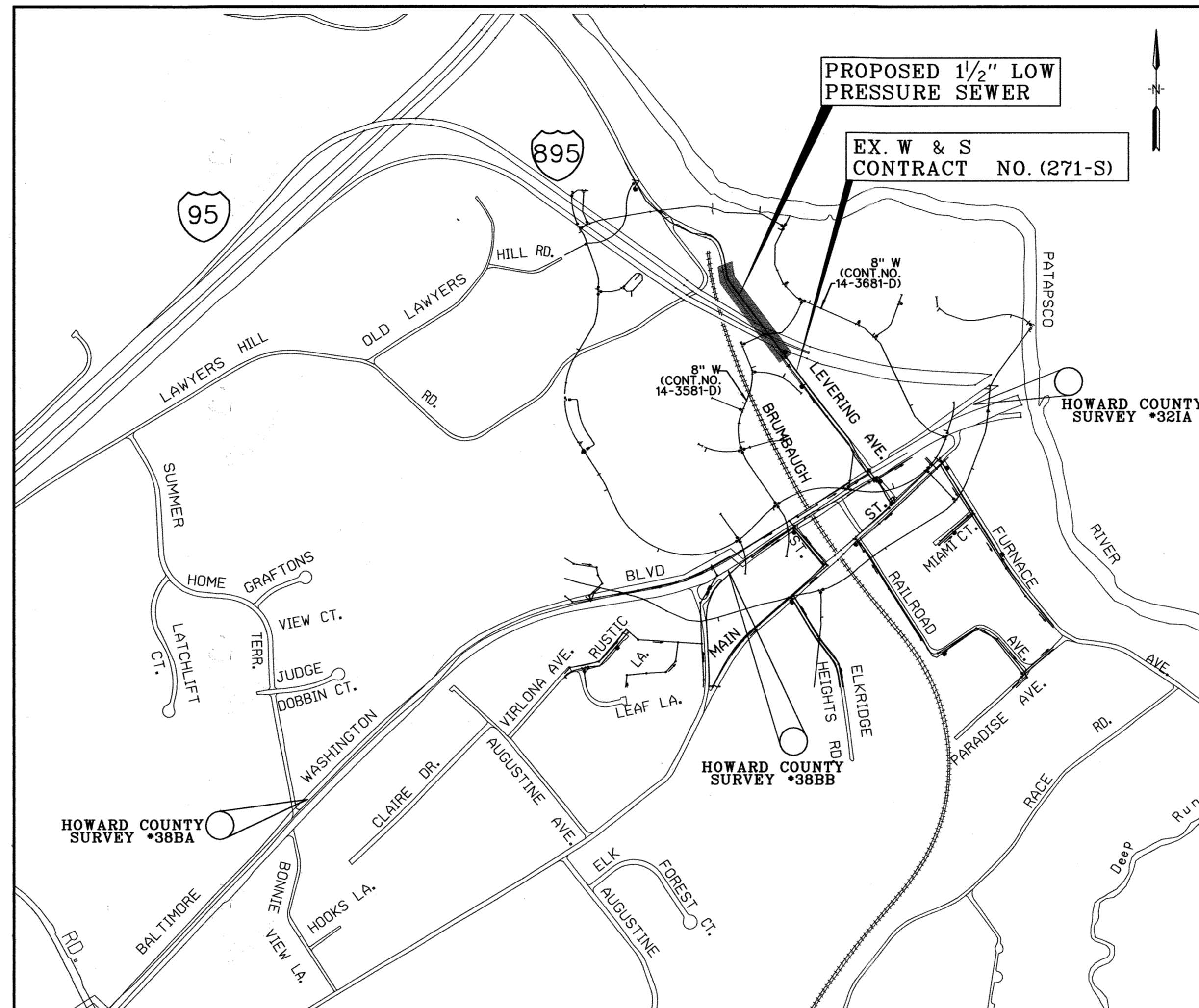


LEVERING AVENUE SEWER EXTENSION HOWARD COUNTY, MARYLAND

DEPARTMENT OF PUBLIC WORKS
CAPITAL PROJECT No. S-6252
CONTRACT No. 10-4273

GENERAL NOTES

- APPROXIMATE LOCATION OF EXISTING UTILITIES ARE SHOWN FROM RECORD DATA. THE CONTRACTOR SHALL TAKE ALL NECESSARY PRECAUTIONS TO PROTECT EXISTING UTILITIES AND SERVICES & MAINTAIN UNINTERRUPTED SERVICE. ANY DAMAGE INCURRED SHALL BE REPAIRED IMMEDIATELY TO THE SATISFACTION OF THE ENGINEER AT THE CONTRACTOR'S EXPENSE.
- ALL HORIZONTAL CONTROLS ARE BASED ON MARYLAND STATE COORDINATES, NAD 83/91.
- ALL VERTICAL CONTROLS ARE BASED ON U.S.G.S. DATUM NGVD29.
- ALL PIPE ELEVATIONS SHOWN ARE INVERT ELEVATIONS UNLESS OTHERWISE NOTED ON THE DRAWINGS.
- CLEAR ALL UTILITIES BY A MINIMUM OF 12". CLEAR ALL POLES BY 5'-0" MINIMUM OR TUNNEL AS REQUIRED. THE OWNER HAS CONTACTED THE UTILITY COMPANIES AND HAS MADE ARRANGEMENTS FOR BRACING OF POLES AS SHOWN ON THE DRAWINGS. IN THE EVENT THE CONTRACTOR'S WORK REQUIRES THE BRACING OF ADDITIONAL POLES, ANY COST INCURRED BY THE OWNER FOR THE BRACING OF ADDITIONAL POLES OR DAMAGES SHALL BE DEDUCTED FROM MONEY OWED TO THE CONTRACTOR. THE CONTRACTOR SHALL COORDINATE WITH THE UTILITY COMPANIES TO SCHEDULE THE BRACING OF THE POLES.
- FOR DETAILS NOT SHOWN ON THE DRAWINGS, AND FOR MATERIALS AND CONSTRUCTION METHODS, USE HOWARD COUNTY DESIGN MANUAL, VOLUME IV, STANDARD SPECIFICATIONS AND DETAILS FOR CONSTRUCTION (LATEST EDITION). THE CONTRACTOR SHALL HAVE A COPY OF VOLUME IV ON THE JOB SITE.
- WHERE TEST PITS HAVE BEEN MADE ON EXISTING UTILITIES, THEY ARE NOTED BY THE SYMBOL [] AT THE LOCATION OF THE TEST PIT. A NOTE OR NOTES CONTAINING THE RESULTS OF THE TEST PIT OR PITS IS INCLUDED ON THE DRAWINGS. EXISTING UTILITIES IN THE VICINITY OF THE PROPOSED WORK FOR WHICH TEST PITS HAVE NOT BEEN DUG SHALL BE LOCATED BY THE CONTRACTOR TWO WEEKS IN ADVANCE OF CONSTRUCTION OPERATIONS AT HIS OWN EXPENSE.
- CONTRACTOR SHALL NOTIFY THE FOLLOWING UTILITY COMPANIES OR AGENCIES AT LEAST FIVE WORKING DAYS BEFORE STARTING WORK SHOWN ON THIS DRAWING:
AT & T _____ 1-800-252-1133
BG&E (CONTRACTOR SERVICES) _____ 410-850-4620
BG&E - UNDERGROUND DAMAGE CONTROL _____ 410-787-9068
BUREAU OF UTILITIES (DPW) _____ 410-313-4900
COLONIAL PIPELINE CO. _____ 410-795-1390
MISS UTILITY _____ 1-800-257-7777
STATE HIGHWAY ADMINISTRATION _____ 410-531-5533
VERIZON _____ 1-800-743-0033/410-224-9210
- TREES AND SHRUBS ARE TO BE PROTECTED FROM DAMAGE TO THE MAXIMUM EXTENT. TREES AND SHRUBS LOCATED WITHIN THE CONSTRUCTION STRIP ARE NOT TO BE REMOVED OR DAMAGED BY THE CONTRACTOR.
- CONTRACTOR SHALL REMOVE TREES, STUMPS AND ROOTS ALONG LINE OF EXCAVATION. PAYMENT FOR SUCH REMOVAL SHALL BE INCLUDED IN THE UNIT PRICE BID FOR CONSTRUCTION OF THE MAIN.
- THE CONTRACTOR SHALL NOTIFY THE BUREAU OF HIGHWAYS, HOWARD COUNTY, AT (410)313-7450 AT LEAST FIVE WORKING DAYS BEFORE ANY OPEN CUT OF ANY COUNTY ROAD OR BORING/JACKING OPERATION IN COUNTY ROADS FOR LAYING SEWER MAINS OR HOUSE CONNECTIONS. THE APPROVAL OF THESE DRAWINGS WILL CONSTITUTE COMPLIANCE WITH DPW REQUIREMENTS PER SECTION 18.114(A) OF THE HOWARD COUNTY CODE.
- ALL SEWER MAINS SHALL BE PVC SDR 21 OR HDPE SDR 11 (IPS SIZING) UNLESS OTHERWISE NOTED.
- ALL MANHOLES SHALL BE 4'-0" INSIDE DIAMETER UNLESS OTHERWISE NOTED.
- MANHOLES DESIGNATED W.T. IN PLAN AND PROFILE SHALL HAVE WATERTIGHT FRAME AND COVER. STANDARD DETAIL 05.52, WHERE WATERTIGHT MANHOLE FRAME AND COVER ARE USED, SET TOP OF FRAME 1'-6" ABOVE FINISHED GRADE UNLESS OTHERWISE NOTED ON THE DRAWINGS.
- HOUSE(S) WITH THE SYMBOL 'C.N.S.' INDICATES THAT CELLAR CANNOT BE SERVED.
- CONSTRUCTION STAKEOUT SHALL BE PERFORMED BY CONTRACTOR.
- ALL FITTINGS SHALL BE BUTTRESSED OR ANCHORED WITH CONCRETE IN ACCORDANCE WITH THE STANDARD DETAILS UNLESS OTHERWISE PROVIDED FOR ON THE DRAWINGS. FITTINGS ARE TO MATCH IPS STANDARDS.
- CONTRACTOR TO VERIFY THE LOCATION OF ALL EXISTING UTILITIES PRIOR TO COMMENCING CONSTRUCTION.



LOCATION MAP

TYPE OF BUILDING: RESIDENTIAL, COMMERCIAL
NUMBER OF PARCELS: 2
NUMBER OF SEWER HOUSE CONNECTIONS: 2
DRAINAGE AREA: PATAPSCO
SEWER CODE: 2021800
WATER CODE: A05

HOWARD COUNTY GEODETIC SURVEY CONTROL
NO. 32A N 565065.463 E 1395212.248 ELEV. 27.696
NO. 38BA N 562553.278 E 1390967.927 ELEV. 166.944

NO. 38BB
N 564007.646 E 1393649.975 ELEV. 64.412

NAD83(91) (HORIZONTAL)
NGVD29 (VERTICAL)

AS BUILTS

INDEX OF SHEETS

SHEET No.	DESCRIPTION
1	TITLE SHEET
2	1/2" LOW PRESSURE SEWER
3	SEWER DETAIL
4	EROSION & SEDIMENT CONTROL, NOTES & DETAILS

QUANTITIES

ITEM	UNIT	ESTIMATE	AS-BUILT	MATERIAL SUPPLIER
1/2" LOW PRESSURE SEWER	LF	511		HDPE
4' DIA TRANSITION MH	EA	1		BRICK
4' DIA MH RISER	VF	1		CONCRETE
1/4" SHC	LF	54		HDPE
4' DIA TERMINAL FLUSHING CONN.	EA	1		CONCRETE

NAME OF UTILITY CONTRACTOR: W.F. WILSON & SONS

CHECKBOX

AS-BUILT DATE: JULY, 2005

SURVEY AND DRAFTING DIVISION

LEGEND

△	TRAVERSE POINT	—	EXISTING WATER MAIN
—	PROPOSED SAN. SEWER	—	EXISTING GAS MAIN
○	PROPOSED MANHOLE	—	EXISTING UNDER GROUND ELECTRIC
MCE	MINIMUM CELLAR ELEVATION	—	EXISTING OVERHEAD SERVICE
—	LIMIT OF DISTURBANCE	○	DECIDUOUS TREE
—	SILT FENCE	★	CONIFEROUS TREE
⊕	TEST STATION	—	EXISTING SAN. SEWER
⊙	BORING LOCATION	○	EXISTING MANHOLE

PLOTED: 01:55 PM on Tuesday, April 05, 2005
By: Chandler, Kenton, Division: Environmental Engineering
FILE: M:\2001\0105\09\Drawings\NEW\1-01.dwg

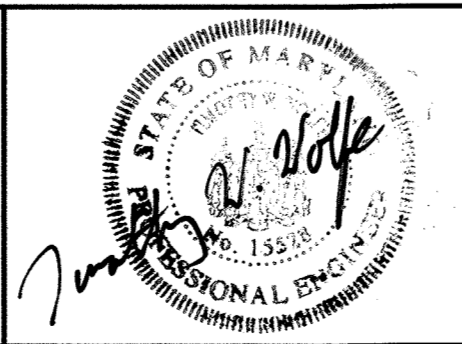
DEPARTMENT OF PUBLIC WORKS
HOWARD COUNTY, MARYLAND

Director of Public Works: *Ray Ch...* 4/12/05
Chief, Bureau of Engineering: *...* 4/7/05
Chief, Bureau of Utilities: *...* 4-11-05
Chief, Utility Design Division: *...* 4-6-05

ENGINEERS
PLANNERS
SCIENTISTS
CONSTRUCTION MANAGERS

KCI
TECHNOLOGIES

10 NORTH PARK DRIVE
HUNT VALLEY, MD 21030
PHONE (410) 316-7800
FAX (410) 316-7817
www.kci.com



DES: GW				
DRN: CK				
CHK: TW				
DATE: APR. 05	CK	△	AS BUILT INFORMATION ADDED	7/05
BY	NO.		REVISION	DATE

TITLE SHEET

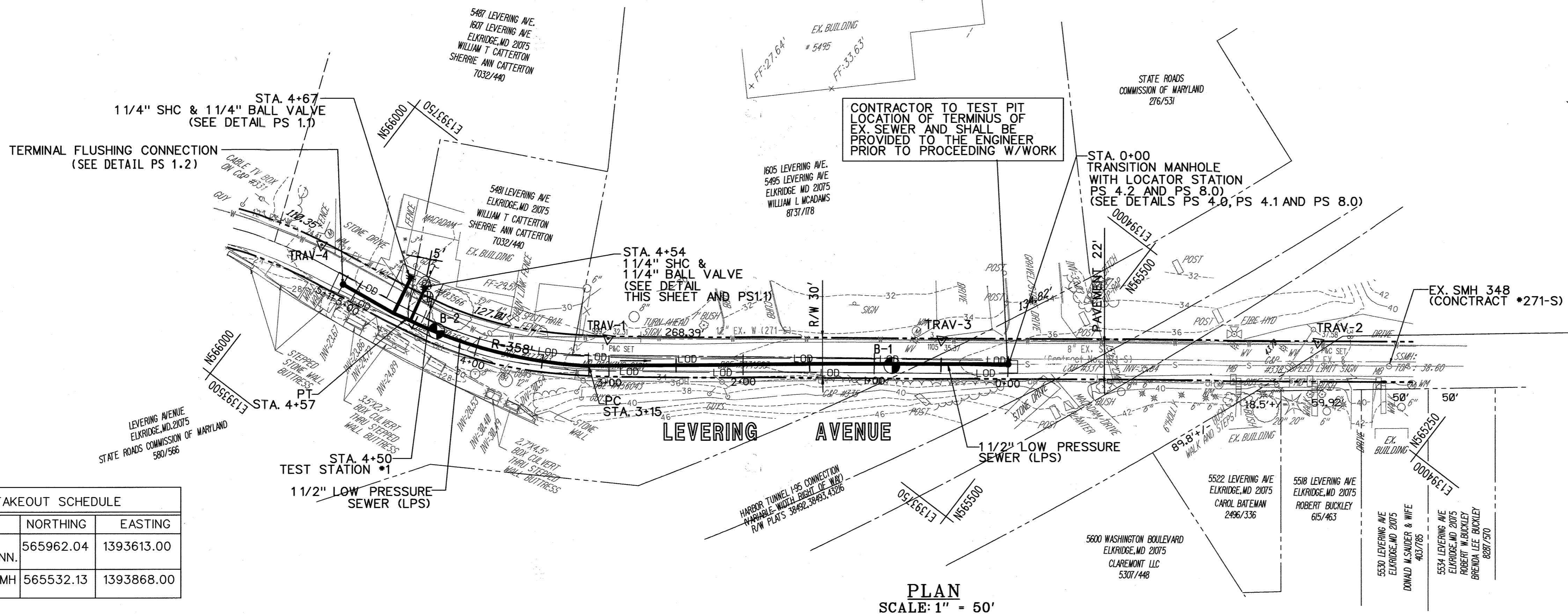
600' SCALE MAP NO. 32 BLOCK NO. 22

LEVERING AVENUE
SEWER EXTENSION

CAPITAL PROJECT No. S-6252
CONTRACT No. 10-4273

ELECTION DISTRICT NO. 1 HOWARD COUNTY, MARYLAND

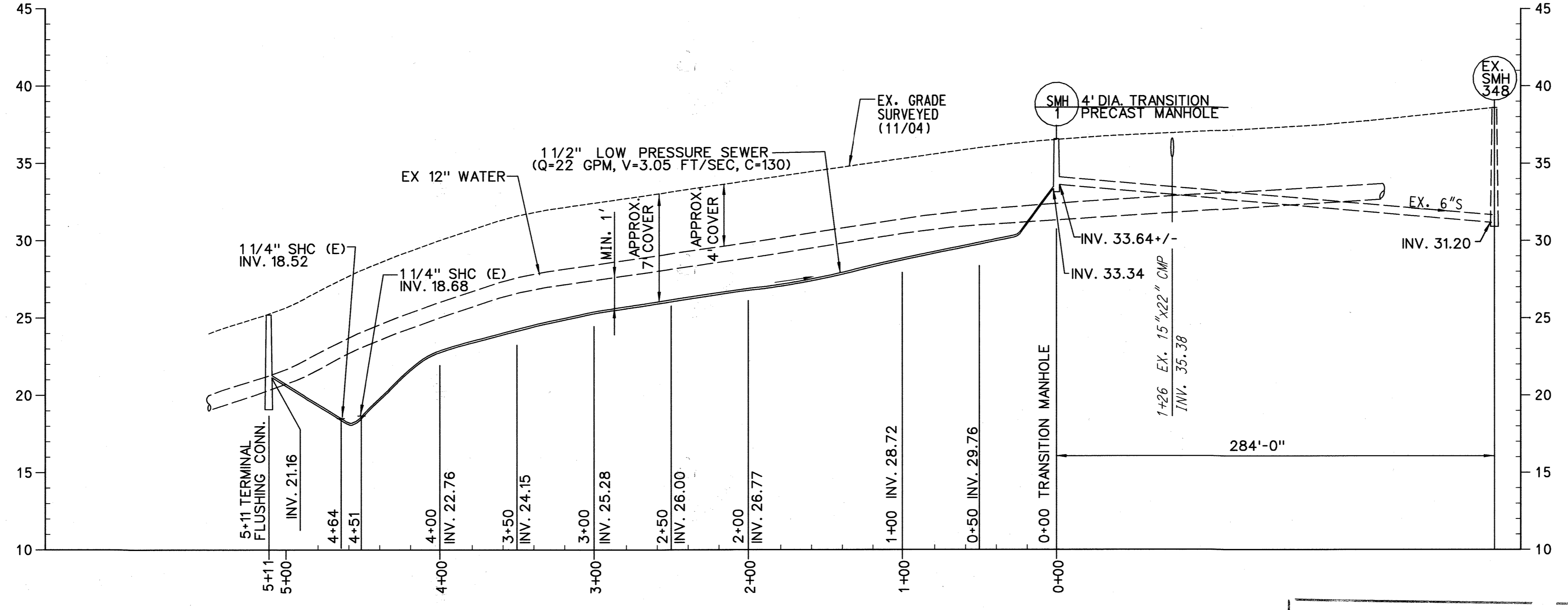
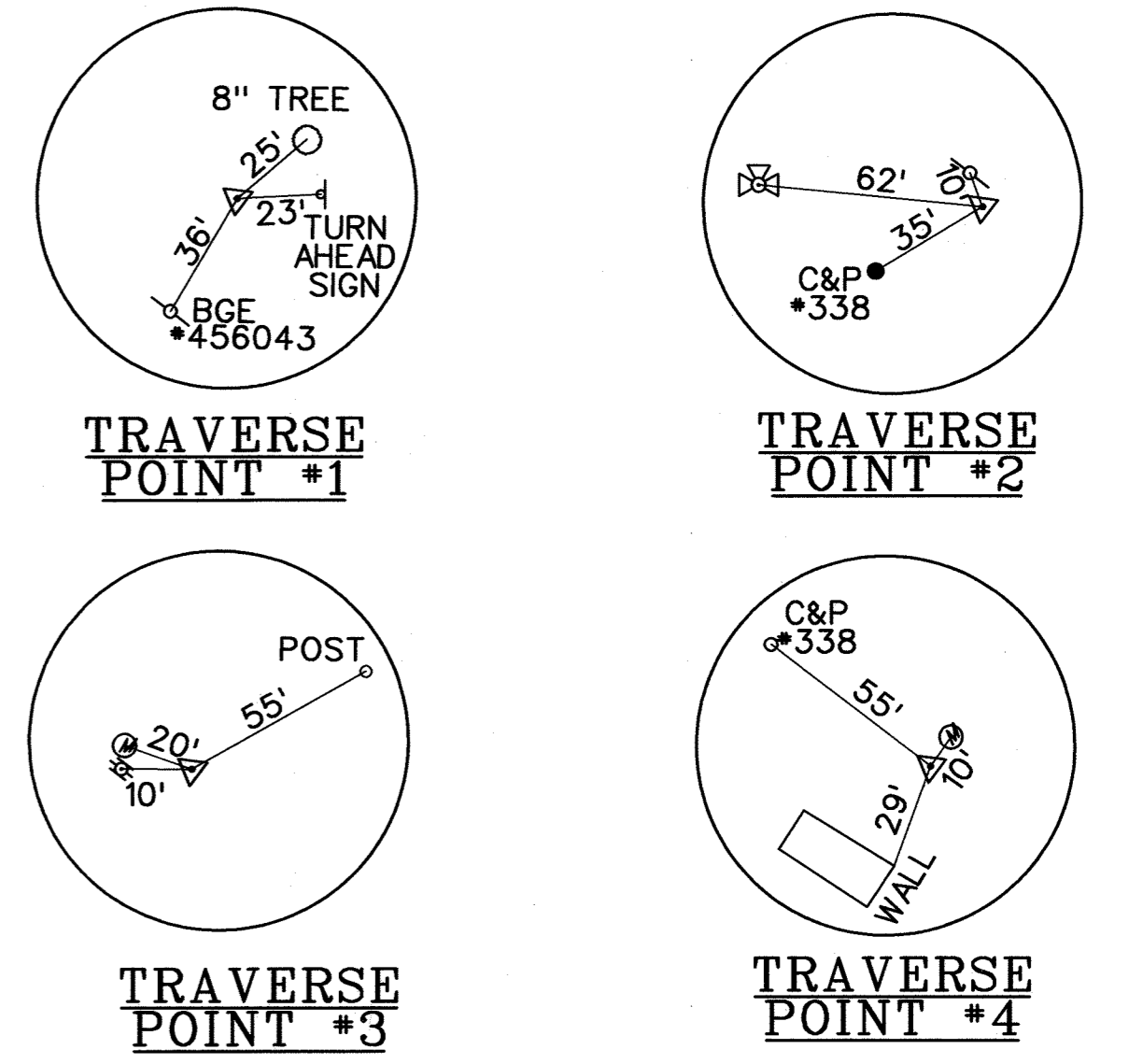
SCALE AS SHOWN
SHEET 1 OF 3



PLAN
SCALE: 1" = 50'

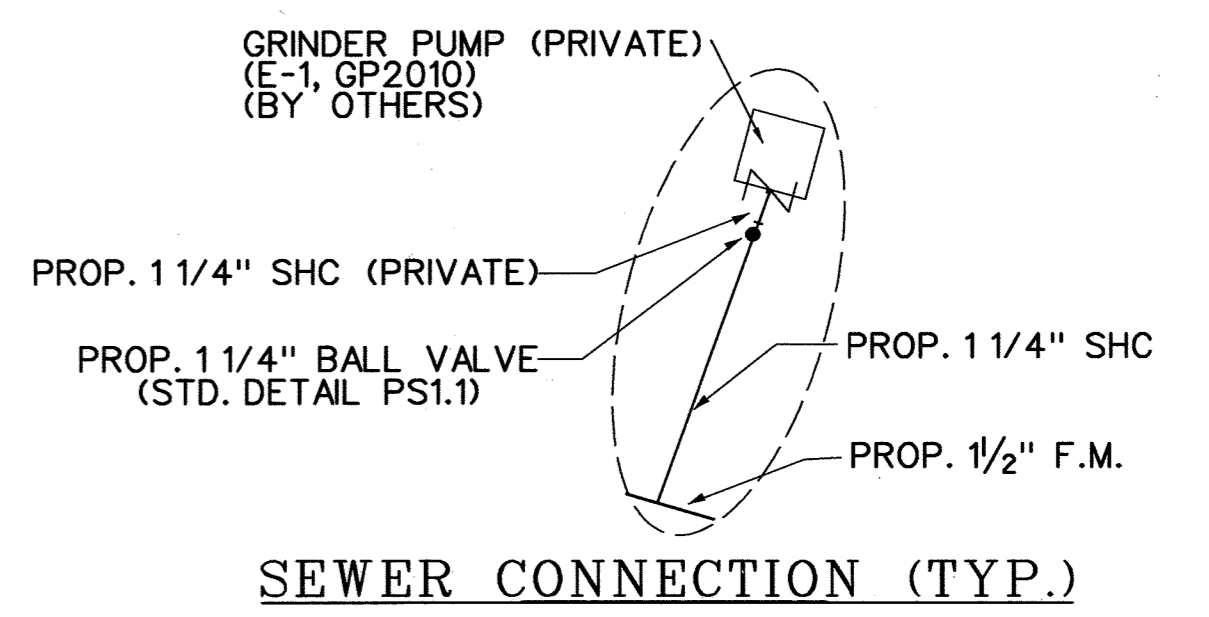
STATION	NORTHING	EASTING
TERMINAL FLUSHING CONN.	565962.04	1393613.00
TRANSITION MH	565532.13	1393868.00

LOCATION	NORTHING	EASTING	ELEVATION
TRV-1	565780.69	1393701.58	32.31
TRV-2	565359.17	1394021.88	37.58
TRV-3	565582.56	1393852.14	35.37
TRV-4	565992.66	1393626.65	24.41



PROFILE
SCALE: HOR. 1" = 50'
VERT. 1" = 5'

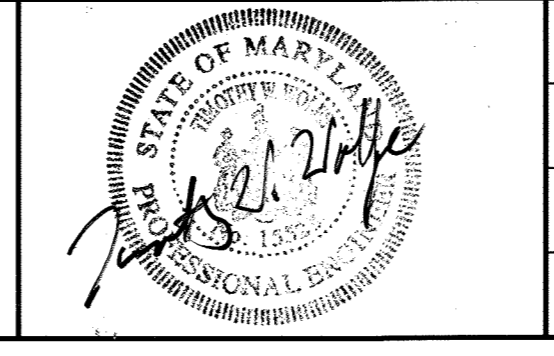
AS BUILTS



PLOTTED: 02:01 PM on Friday, July 22, 2005
 BY: Chander, Kanto, Division: Environmental Engineering
 FILE: M:\2005\10\1025293\Drawings\33a.dwg, 33a.dwg

DEPARTMENT OF PUBLIC WORKS HOWARD COUNTY, MARYLAND	
DIRECTOR OF PUBLIC WORKS	DATE
CHIEF, BUREAU OF UTILITIES	DATE
CHIEF, BUREAU OF ENGINEERING	DATE
CHIEF, UTILITY DESIGN DIVISION	DATE

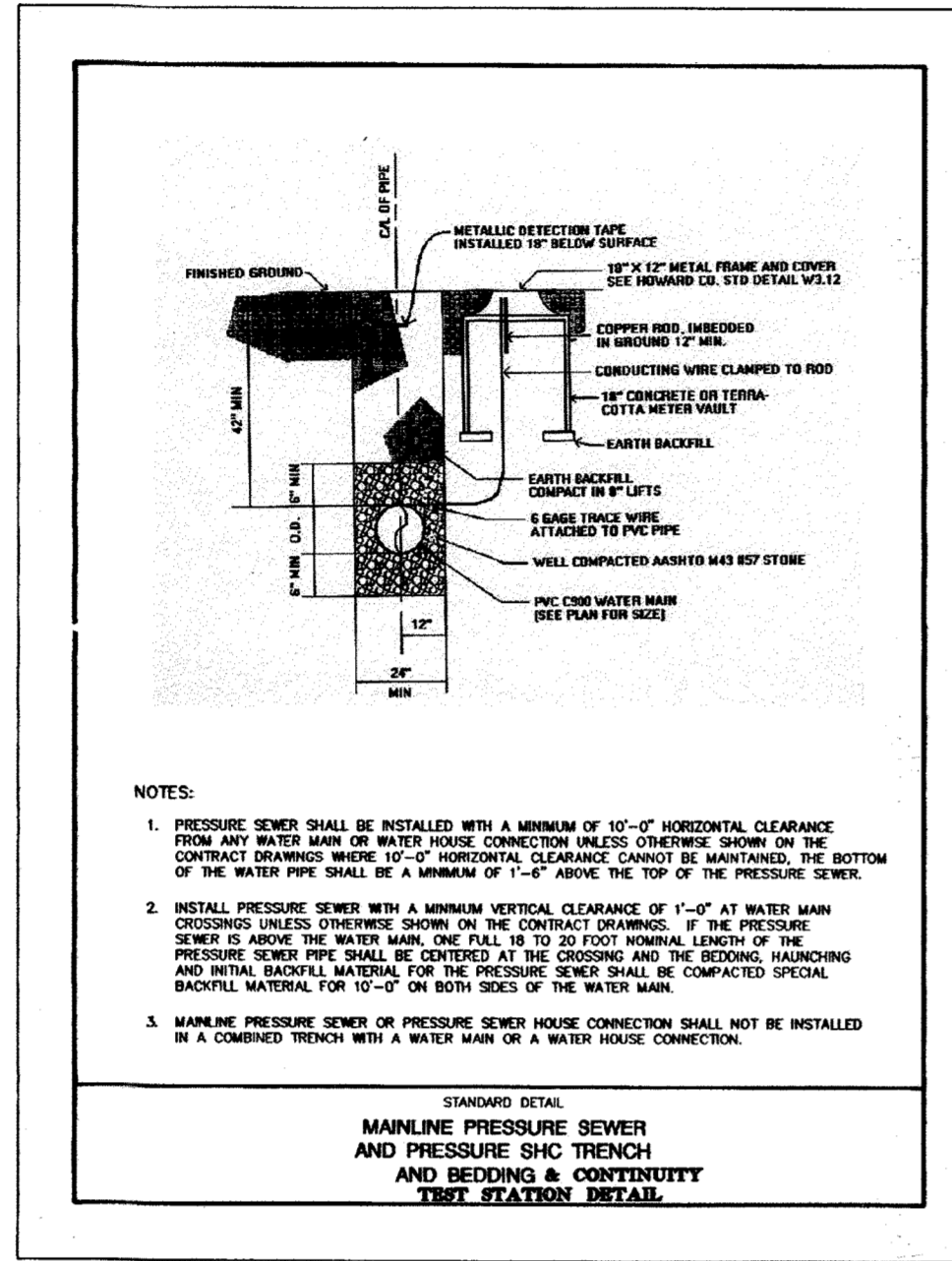

KCI
 TECHNOLOGIES
 ENGINEERS
 PLANNERS
 SCIENTISTS
 CONSTRUCTION MANAGERS
 10 NORTH PARK DRIVE
 HUNT VALLEY, MD 21030
 PHONE: (410) 316-7800
 FAX: (410) 316-7817
 www.kci.com



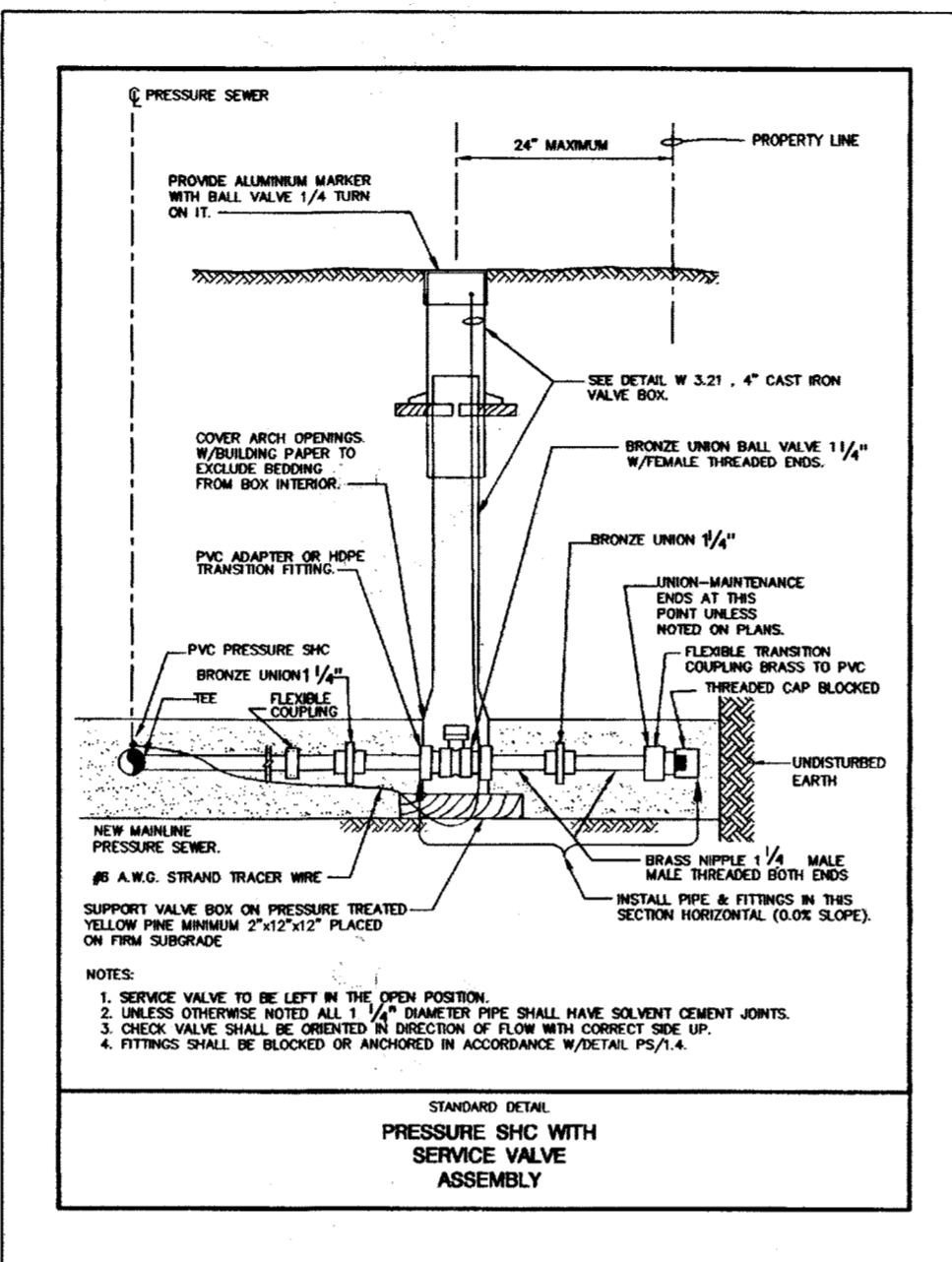
DES:	GW				
DRN:	CK				
CHK:	TWW				
DATE:	JULY 05				
BY:	NO.	AS BUILT INFORMATION ADDED		7/05	
REVISION:					

PLAN AND PROFILE	
600' SCALE MAP NO.	32
BLOCK NO.	22

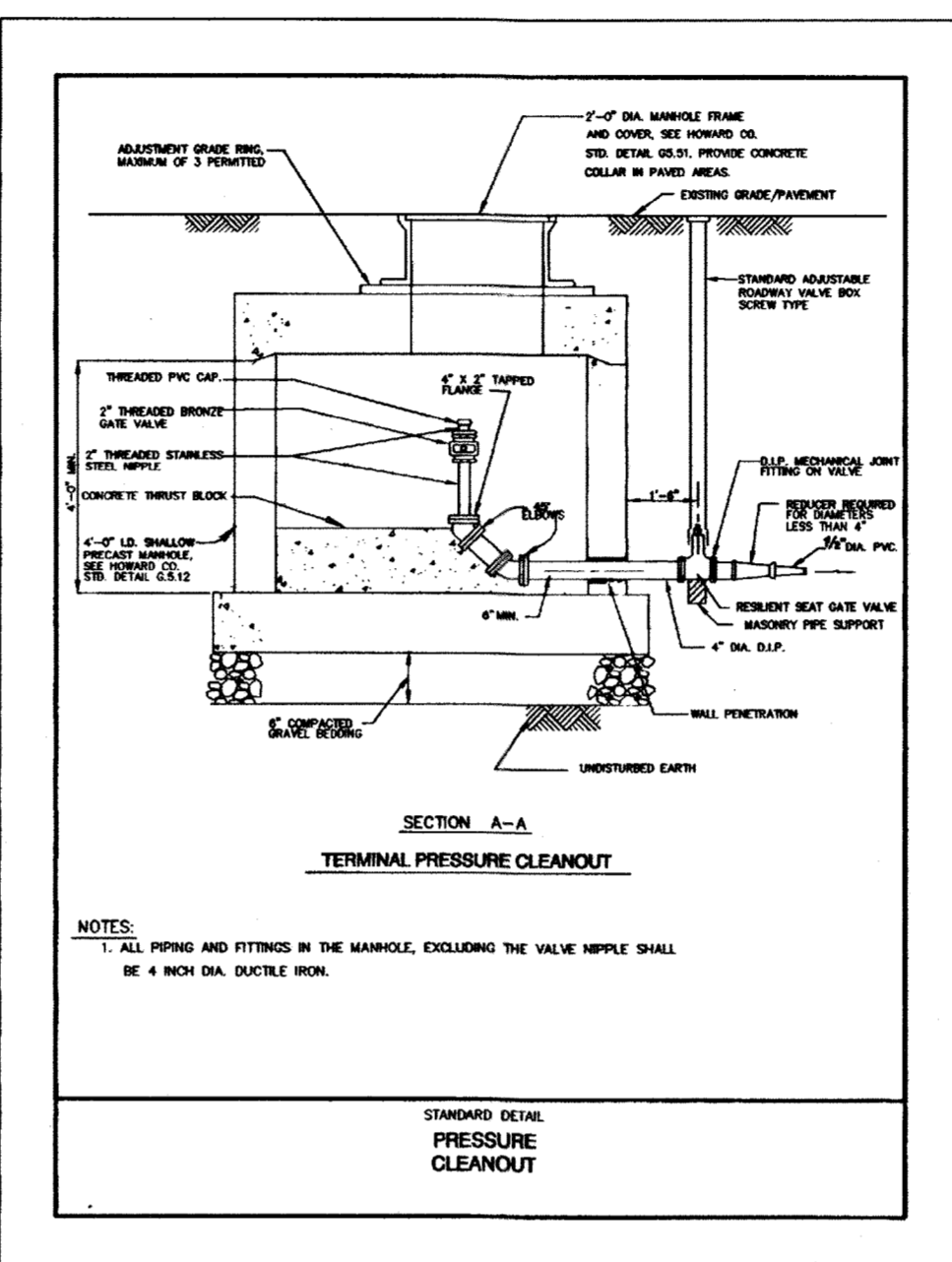
**LEVERING AVENUE
SEWER EXTENSION**
 CAPITAL PROJECT No. S-6252
 CONTRACT No. 10-4273
 ELECTION DISTRICT NO. 1 HOWARD COUNTY, MARYLAND



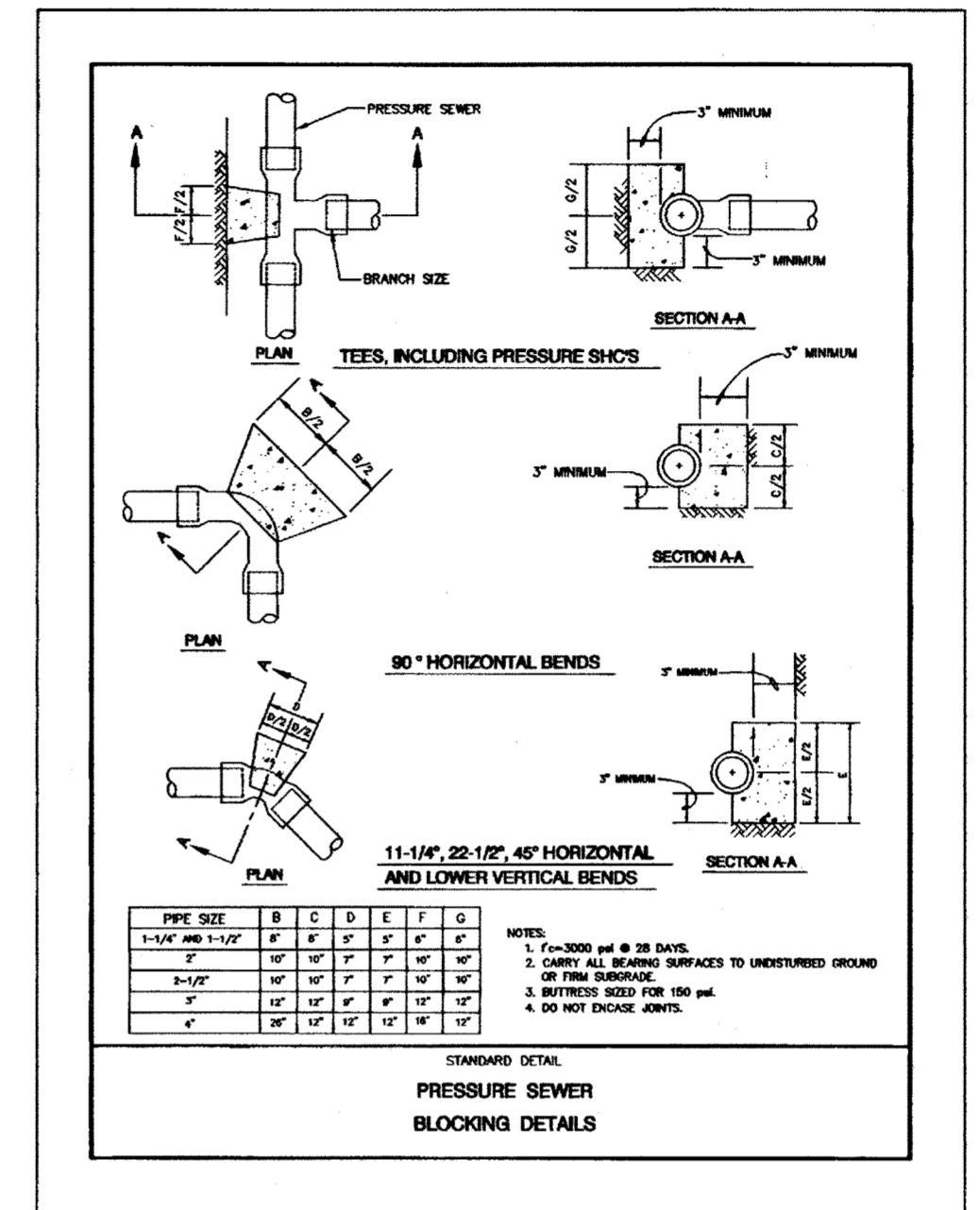
DETAIL PS 1.0



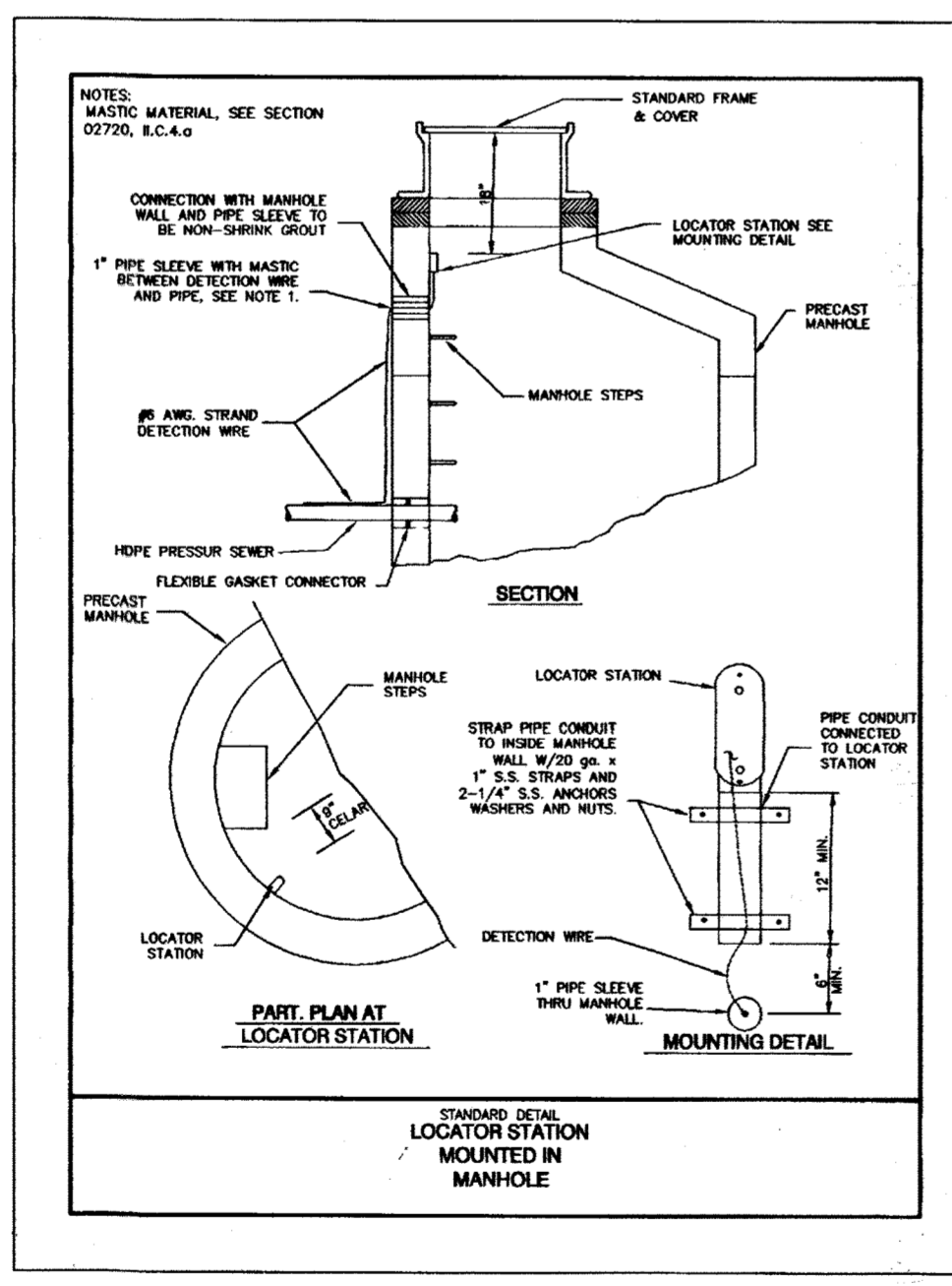
DETAIL PS 1.1



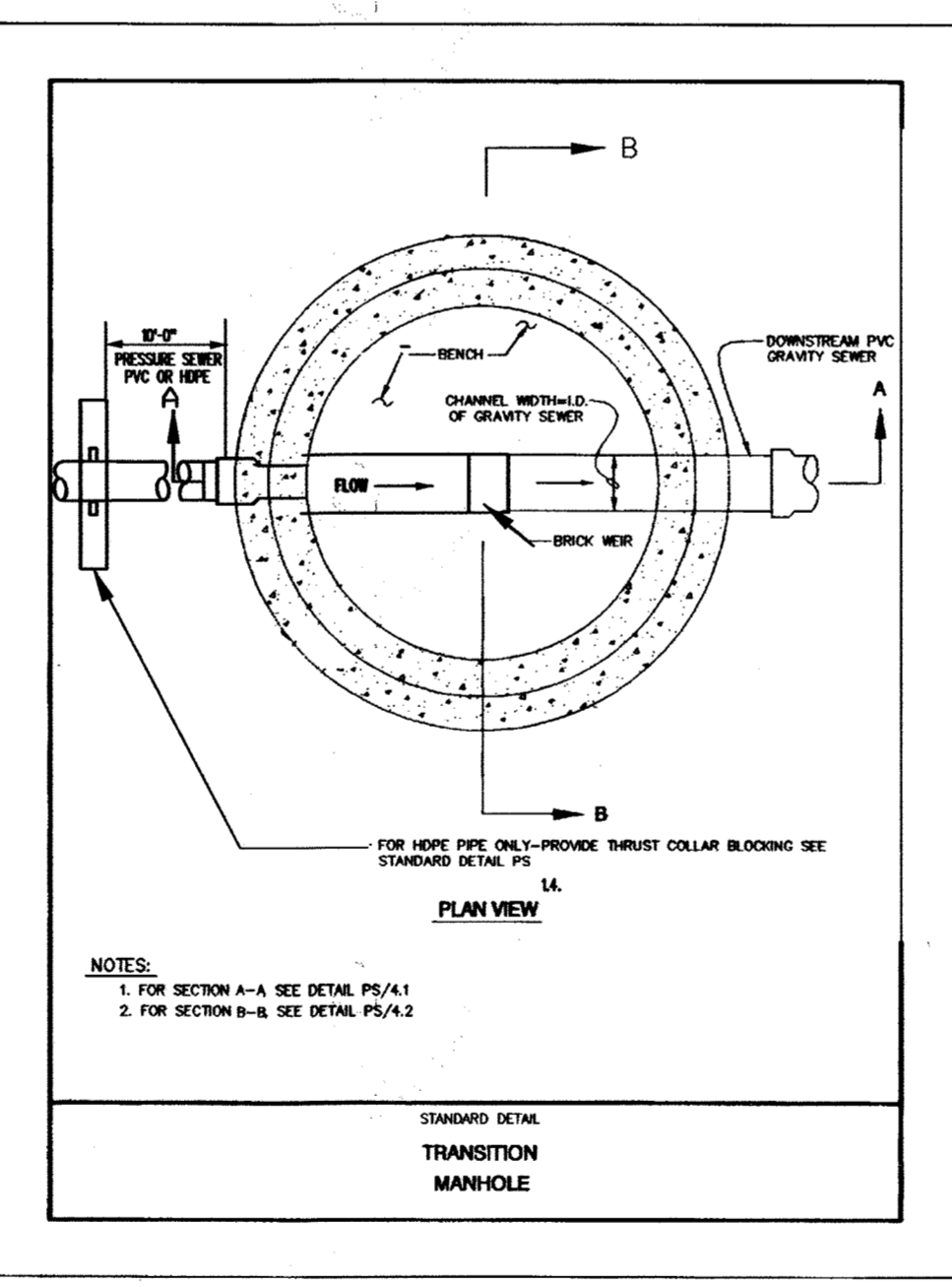
DETAIL PS 1.2



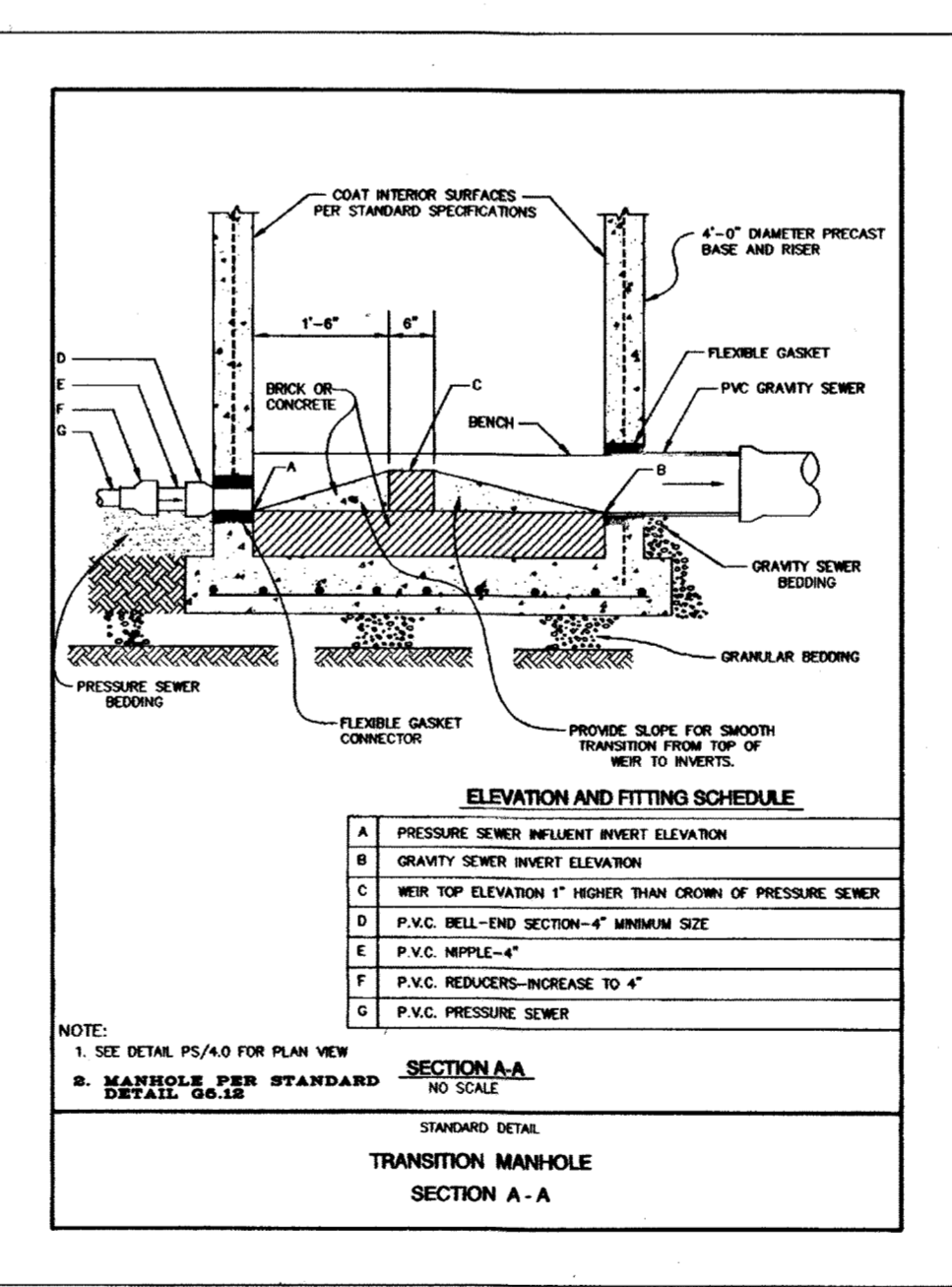
DETAIL PS 1.4



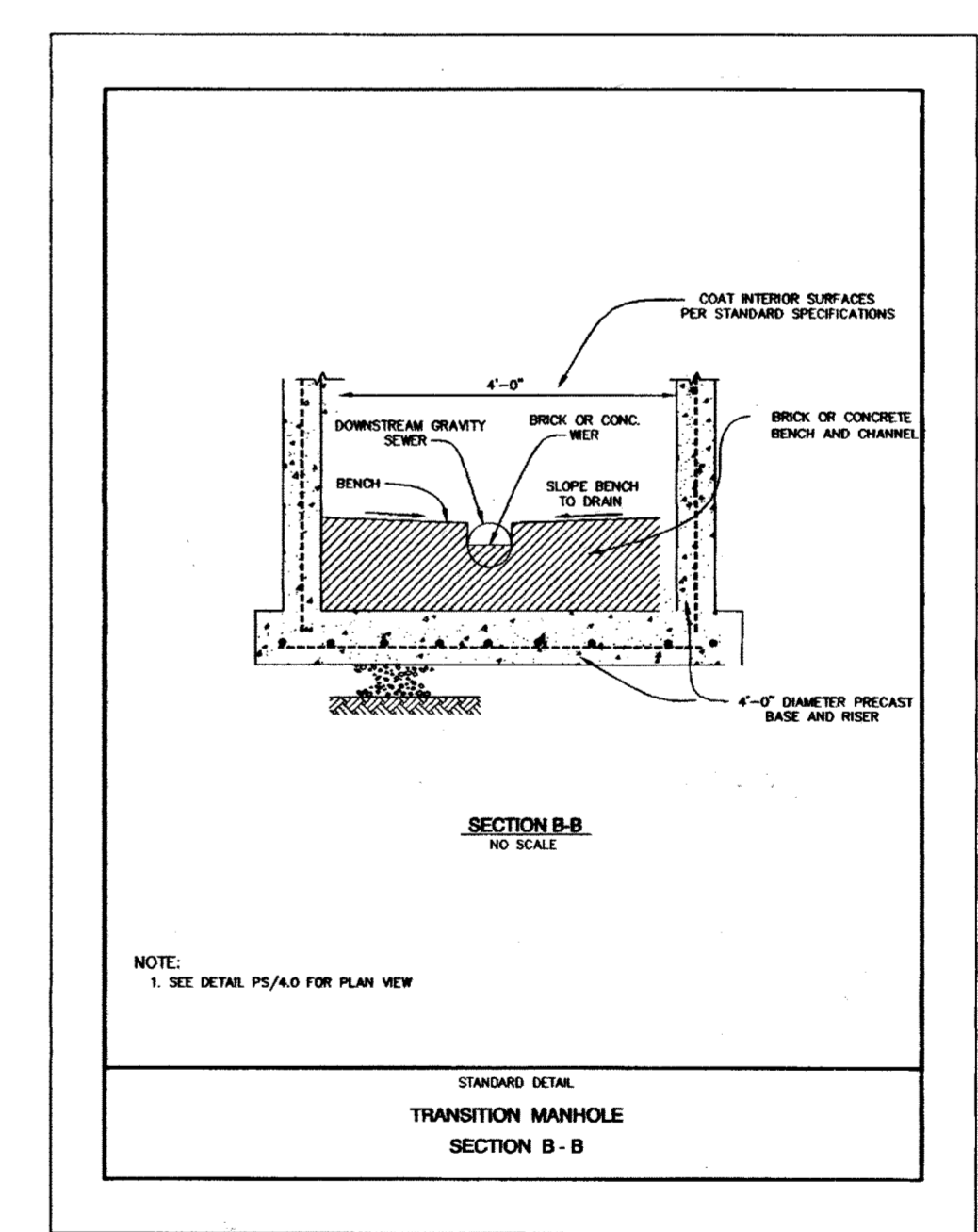
DETAIL PS 8.0



DETAIL PS 4.0



DETAIL PS 4.1



DETAIL PS 4.2

AS BUILT

- NOTES:
- ANY SPLICES IN THE LOCATING WIRE SHALL BE UNDERGROUND SPLICES.
 - USE STANDARD HOWARD COUNTY CAST IRON CURB BOX FOR PRESSURE SHC SERVICE VALVE.

PLOTTED: 02:02 PM on Tuesday, April 05, 2005
 BY: Chander, Kanta, Division: Environmental/Engineering
 FILE: M:\2005\10\102529\standard.dwg

DEPARTMENT OF PUBLIC WORKS
HOWARD COUNTY, MARYLAND

4/11/05
DIRECTOR OF PUBLIC WORKS

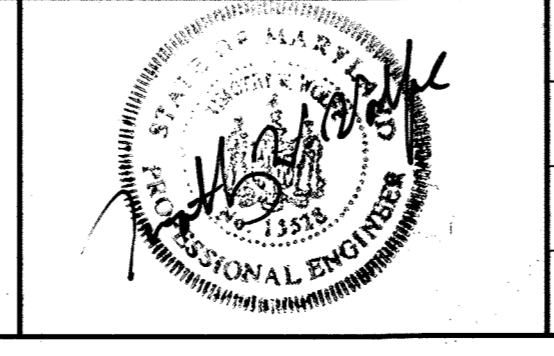
4/7/05
CHIEF, BUREAU OF ENGINEERING

4-6-05
CHIEF, UTILITY DESIGN DIVISION

ENGINEERS
PLANNERS
SCIENTISTS
CONSTRUCTION MANAGERS

KCI
TECHNOLOGIES

10 NORTH PARK DRIVE
HUNT VALLEY, MD 21030
PHONE: (410) 316-7500
FAX: (410) 316-7817
www.kci.com



DES:	GW				
DRN:	CK				
CHK:	TWW				
DATE:	APR-05				
BY:	NO.				
		AS BUILT INFORMATION ADDED		7/05	
		REVISION		DATE	

DETAILS

600' SCALE MAP NO. 32 BLOCK NO. 22

LEVERING AVENUE
SEWER EXTENSION

CAPITAL PROJECT No. S-6252
CONTRACT No. 10-4273

ELECTION DISTRICT NO. 1 HOWARD COUNTY, MARYLAND

SCALE
AS SHOWN

SHEET
3 OF 3