

SHEET INDEX

1	TITLE SHEET
2	PLAN VIEW OF WATER AND SEWER MAINS
3	PROFILES OF WATER AND SEWER MAINS

WATER AND SEWER EXTENSIONS

COLUMBIA GATEWAY

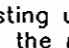
PARCEL U-9 AND LOT 15

6th ELECTION DISTRICT

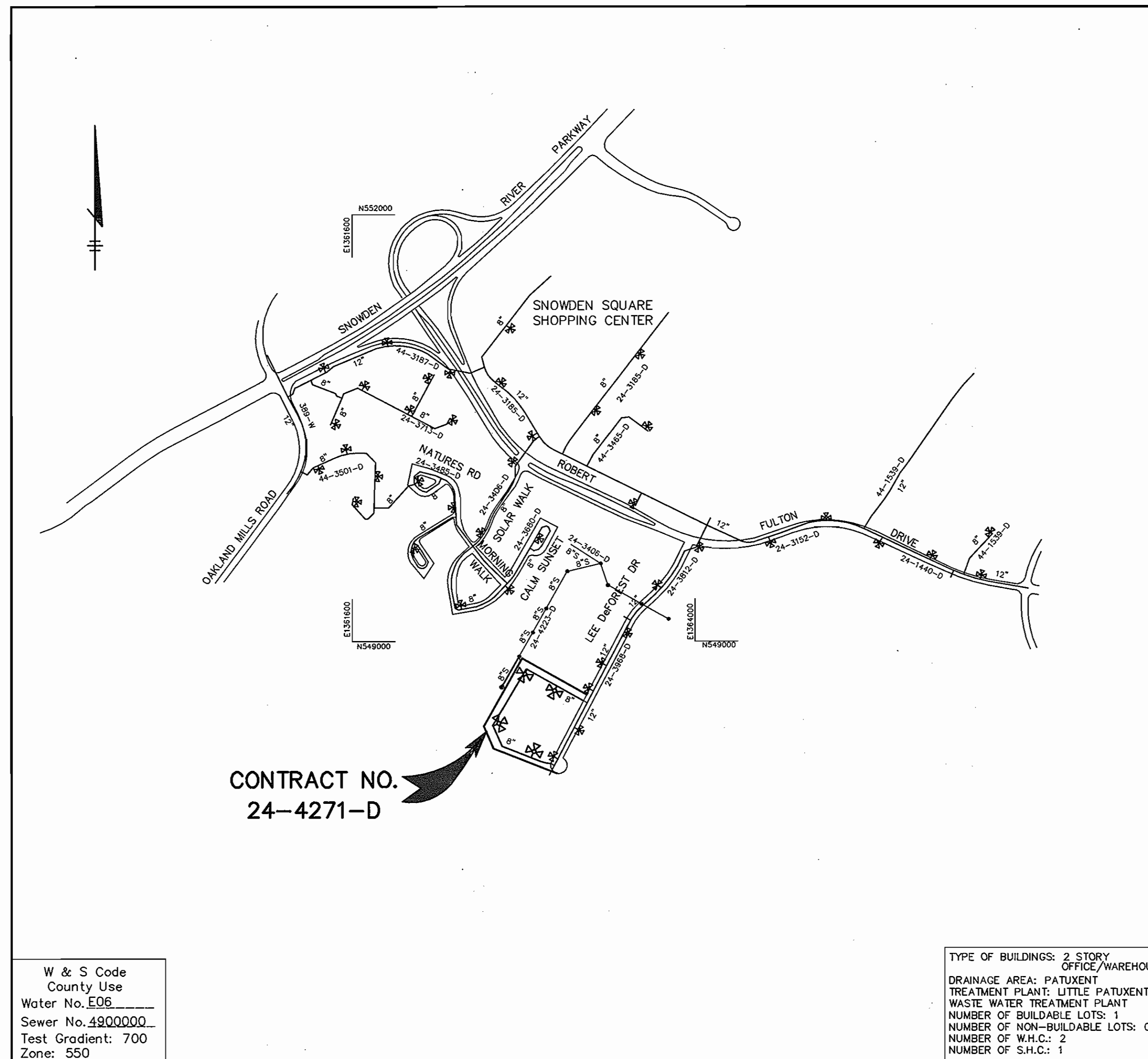
HOWARD COUNTY, MARYLAND

CONTRACT NO. 24-4271-D

GENERAL NOTES

- Approximate locations of existing mains are shown. The contractor shall take all necessary precautions to protect existing mains and services and maintain uninterrupted service. Any damage incurred shall be repaired immediately to the satisfaction of the Engineer at the Contractor's expense.
- Topographic field surveys were performed 2004 by Gutschick Little & Weber, P.A.
- Horizontal and Vertical Survey Controls:
 - The coordinates shown on the drawings are based on Maryland State Reference System NAD '27 as projected by Howard County Geodetic Control Stations No. 2243002 and No. 2243003.
 - All vertical controls on NAVD '88. Vertical Controls on the drawings are
- All pipe elevations shown are invert elevations unless otherwise noted on the plans.
- Clear all utilities by a minimum of 12 inches. Clear all poles by 5'-0" minimum or tunnel as required unless otherwise noted. The owner has contacted the utility companies and has made arrangements for brocing of poles as shown on the drawings. In the event the contractor's work requires the brocing of additional poles, any cost incurred by the owner for the brocing of additional poles or damages shall be deducted from monies owed the contractor. The contractor shall coordinate with the utility companies to schedule the brocing of the poles.
- For details not shown on the drawings, and for materials and construction methods, use Howard County Design Manual, Volume IV, Standard Specifications and Details for Construction (Latest Edition). The contractor shall have a copy of Volume IV on the job.
- Where test pits have been made on existing utilities, they are noted by the symbol  at the locations of the test pits. A note or notes containing the results of the test pit or pits is included on the drawings. Existing utilities in the vicinity of the proposed work for which test pits have not been dug shall be located by the contractor two weeks in advance of construction operations at his own expense.
- The contractor shall notify the following utility companies or agencies at least five working days before starting work shown on these plans:

AT&T	1-800-252-1133
BGE (Construction Services)	410-850-4620
BGE (Emergency)	410-685-1400
Bureau of Utilities	410-313-4900
Colonial Pipeline Co.	410-795-1390
Miss Utility	1-800-257-7777
State Highway Administration	410-531-5533
Verizon	1-800-743-0033 / 410-224-9210
- Trees and shrubs are to be protected from damage to the maximum extent. Trees and shrubs located within the construction strip are not to be removed or damaged by the contractor.
- The contractor shall remove trees, stumps and roots along the line of excavation. Payment for such removal shall be included in the unit price bid for construction of the main.
- The contractor shall notify the Bureau of Highways, Howard County, at 410-313-7450 at least five working days before open cutting or boring/packing of any County road for laying water/sewer mains or house connections. The approval of these drawings will constitute compliance with DPW requirements per Section 18.114(c) of the Howard County Code.



CONTRACT NO.
24-4271-D

W & S Code
County Use
Water No. E06
Sewer No. 4900000
Test Gradient: 700
Zone: 550

TYPE OF BUILDINGS: 2 STORY OFFICE/WAREHOUSE
DRAINAGE AREA: PATUXENT TREATMENT PLANT; LITTLE PATUXENT WASTE WATER TREATMENT PLANT
NUMBER OF BUILDABLE LOTS: 1
NUMBER OF NON-BUILDABLE LOTS: 0
NUMBER OF W.H.C.: 2
NUMBER OF S.H.C.: 1

VICINITY MAP
SCALE: 1"=600'

AS BUILT
DATE: NOV. 2005

QUANTITIES

ITEMS	QUANTITIES ESTIMATED	AS-BUILT		
		QUANTITIES	TYPE	MANUFACTURER / SUPPLIER
8" WATER	1476 LF	1476 LF	DIP CLASS 52	US PIPE/HUGHES
6" WATER	83 LF	70 LF	DIP CLASS 52	US PIPE/HUGHES
FIRE HYDRANTS	4 EA.	4 EA.	KENNEDY	KENNEDY/HUGHES
8" VALVE	2 EA.	2 EA.	GATE VALVE	KENNEDY/HUGHES
6" VALVE	6 EA.	6 EA.	GATE VALVE	KENNEDY/HUGHES
8"x6" T	6 EA.	6 EA.	MJ HYDRANT TEE	TYLER/HUGHES
8"-1/8HB	4 EA.	4 EA.	MJ BEND	TYLER/HUGHES
8"-1/16HB	1 EA.	1 EA.	MJ BEND	TYLER/HUGHES
8"-1/32HB	1 EA.	1 EA.	MJ BEND	TYLER/HUGHES
8" SEWER	247 LF	247 LF	PVC SDR 35	JM MANUFACTURING
4' DIA MANHOLE	1 EA.	1 EA.	PRECAST CONC.	ATLANTIC CONC. PROD.

NAME OF UTILITY CONTRACTOR: **RONKIN CONSTRUCTION, INC.**

SEWAGE	CHECKBOX
AS-BUILT DATE	NOV. 2005
SURVEY AND DRAFTING DIVISION	

Review for Howard Soil Conservation District and meets technical requirements.
Jim Myers 3-24-05
NATURAL RESOURCES CONSERVATION SERVICE DATE

This plan is approved for soil erosion and sediment control by the Howard Soil Conservation District.
John K. Robertson 3-24-05
HOWARD SOIL CONSERVATION DISTRICT DATE

OWNER: GEAPE LAND HOLDING II, INC.
10275 LITTLE PATUXENT PARKWAY
COLUMBIA, MARYLAND 21044
410-992-6370

DEVELOPER: GATEWAY CENTRE LLC
c/o BAXLEY DEVELOPMENT, INC.
10400 LITTLE PATUXENT PARKWAY
SUITE 280
COLUMBIA, MARYLAND 21044
410-715-6800

DEPARTMENT OF PUBLIC WORKS
HOWARD COUNTY, MARYLAND
Robert Danner 3-30-05
CHIEF, BUREAU OF UTILITIES DATE

DEPARTMENT OF PLANNING & ZONING
HOWARD COUNTY, MARYLAND
Christopher J. Reid 4/5/05
CHIEF, DEVELOPMENT ENGINEERING DIVISION DATE

Patton Harris Rust & Associates, PC
Engineers, Surveyors, Planners, Landscape Architects.
8818 Centre Park Drive
Columbia, MD 21045
T 410.997.9200
F 410.997.9282

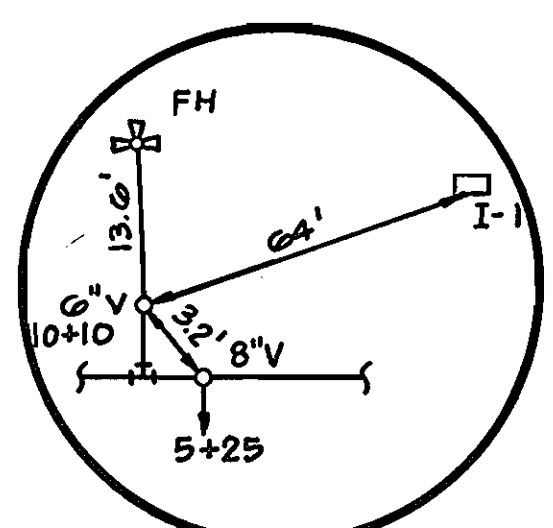
STATE OF MARYLAND
PROFESSIONAL ENGINEER
CHRISTOPHER J. REID #19949
3/10/05

DES: C.J.R.					
DRN: DAM					
CHK: C.J.R.					
DATE: 3/10/05					
BY NO.		REVISION		DATE	

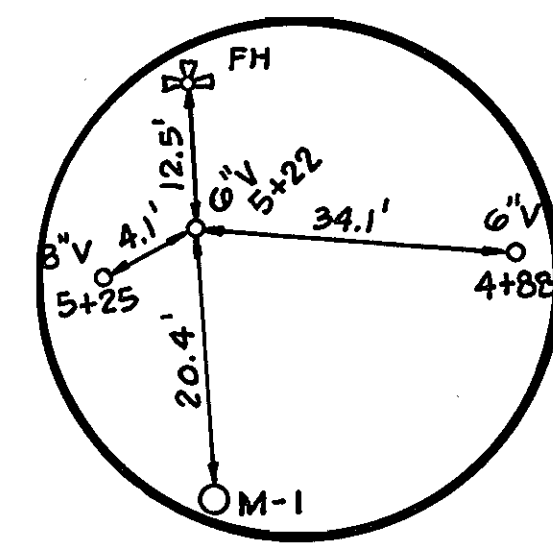
TITLE SHEET
600' SCALE MAP NO. 42 BLOCK NO. 11,12

COLUMBIA GATEWAY
PARCEL U-9 AND LOT 15
6th ELECTION DISTRICT
HOWARD COUNTY, MARYLAND
CONTRACT 24-4271-D

SCALE AS SHOWN
SHEET 1 OF 3

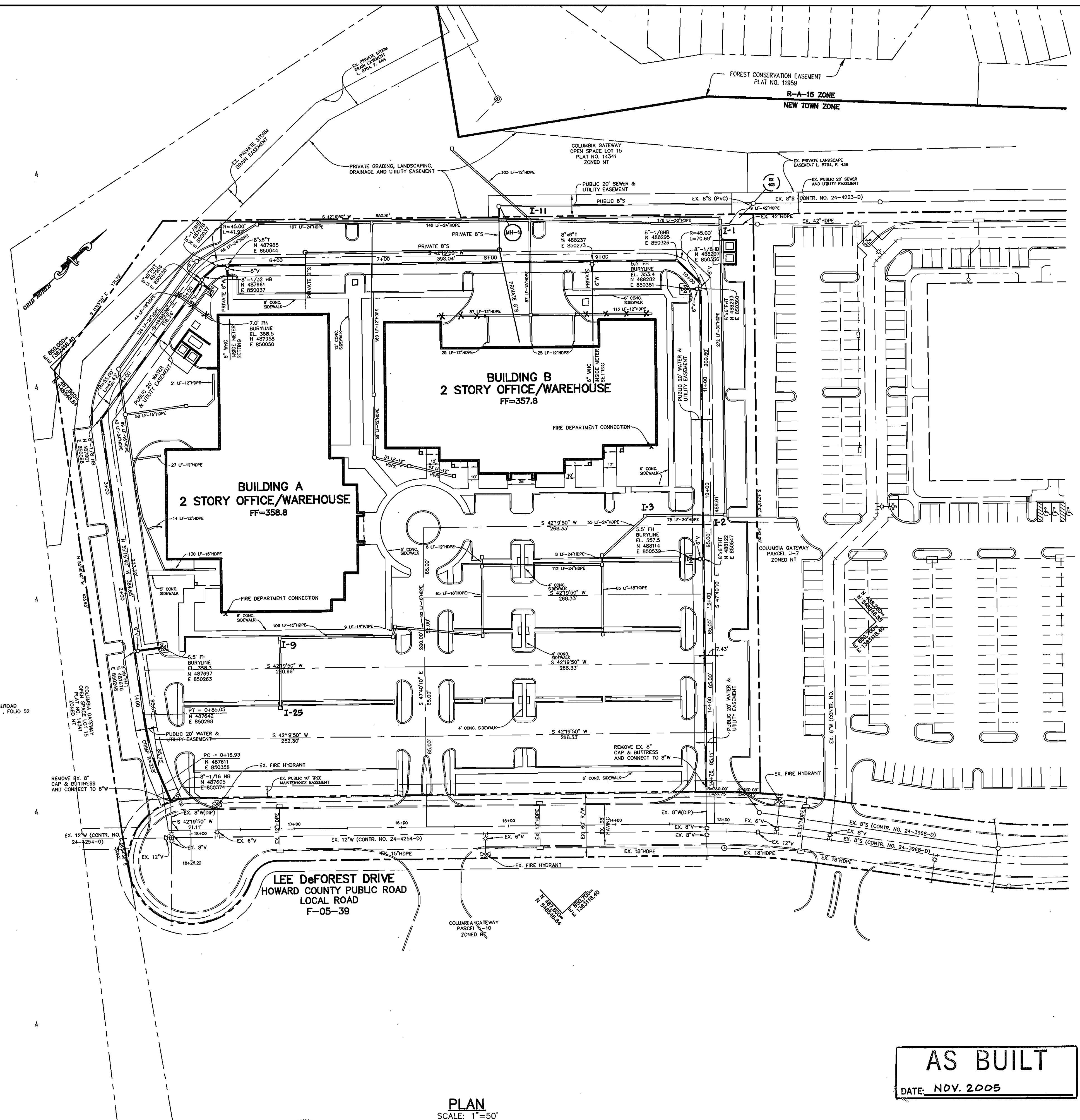


DETAIL No. 1



DETAIL No. 2

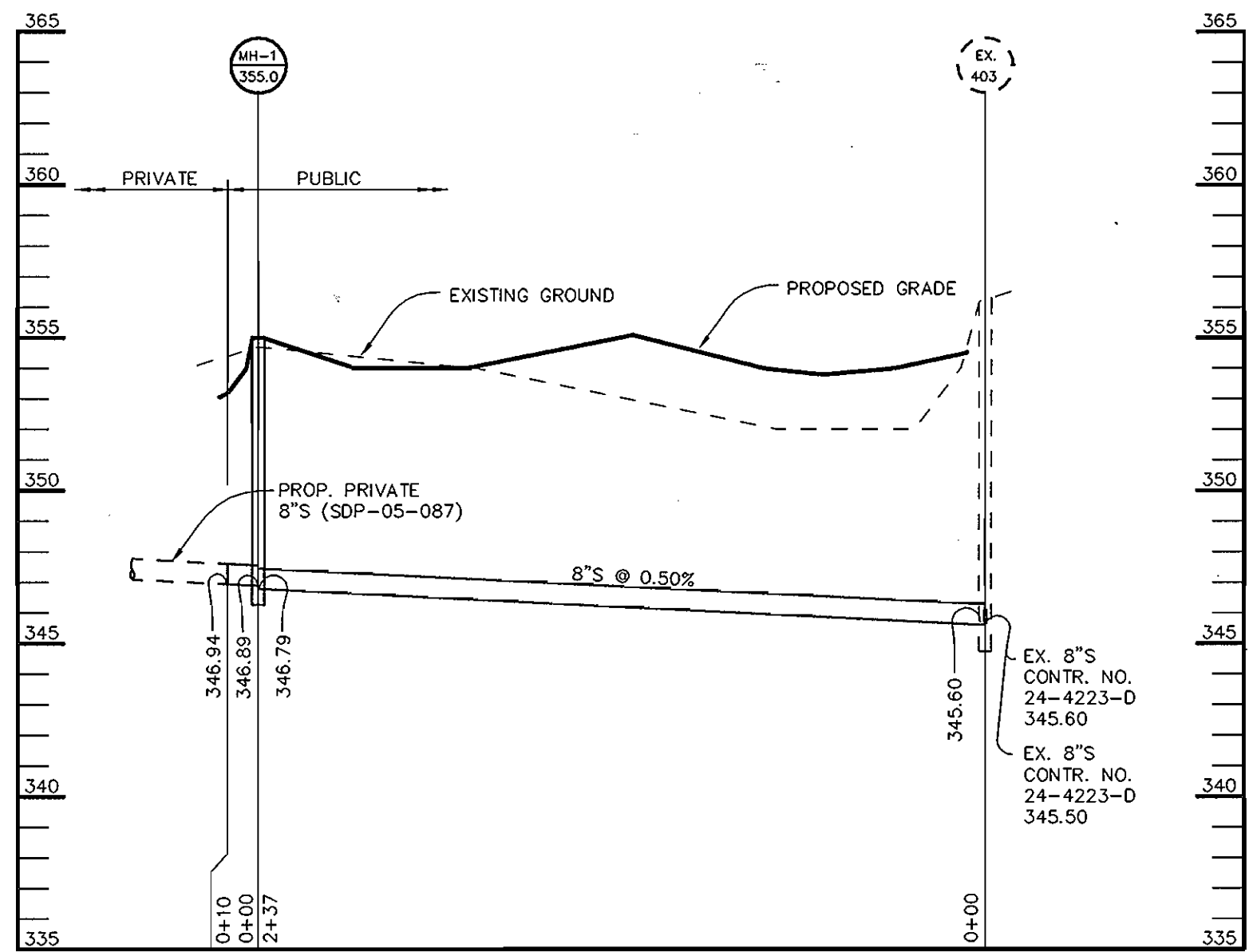
AS-BUILTS				
VALVES	FROM	TO	DISTANCE	REMARKS
6" FH VALVE	I-2	VALVE	40'	
12+03	I-3	VALVE	60.8'	
	FH	VALVE	10'	
6" FH VALVE	I-1	VALVE	64'	SEE
10+10	FH	VALVE	13.6'	DETAIL
	8" VALVE 10+08	VALVE	3.2'	No. 1
6" VALVE	I-11	VALVE	66'	6" TO BLDG. 'B'
8+95	FH 10+10	VALVE	94.7'	
	M-2	VALVE	34'	
6" FH VALVE	FH	VALVE	12.5'	SEE
5+22	M-1	VALVE	20.4'	DETAIL
	6" VALVE 4+88	VALVE	34.1'	No. 2
6" VALVE	M-1	VALVE	47.3'	6" TO BLDG. 'A'
4+88	FH	VALVE	35'	
	6" VALVE 5+22	VALVE	34.1'	
6" VALVE	FH	VALVE	24.7'	
1+45	I-9	VALVE	135'	
	I-25	VALVE	147'	



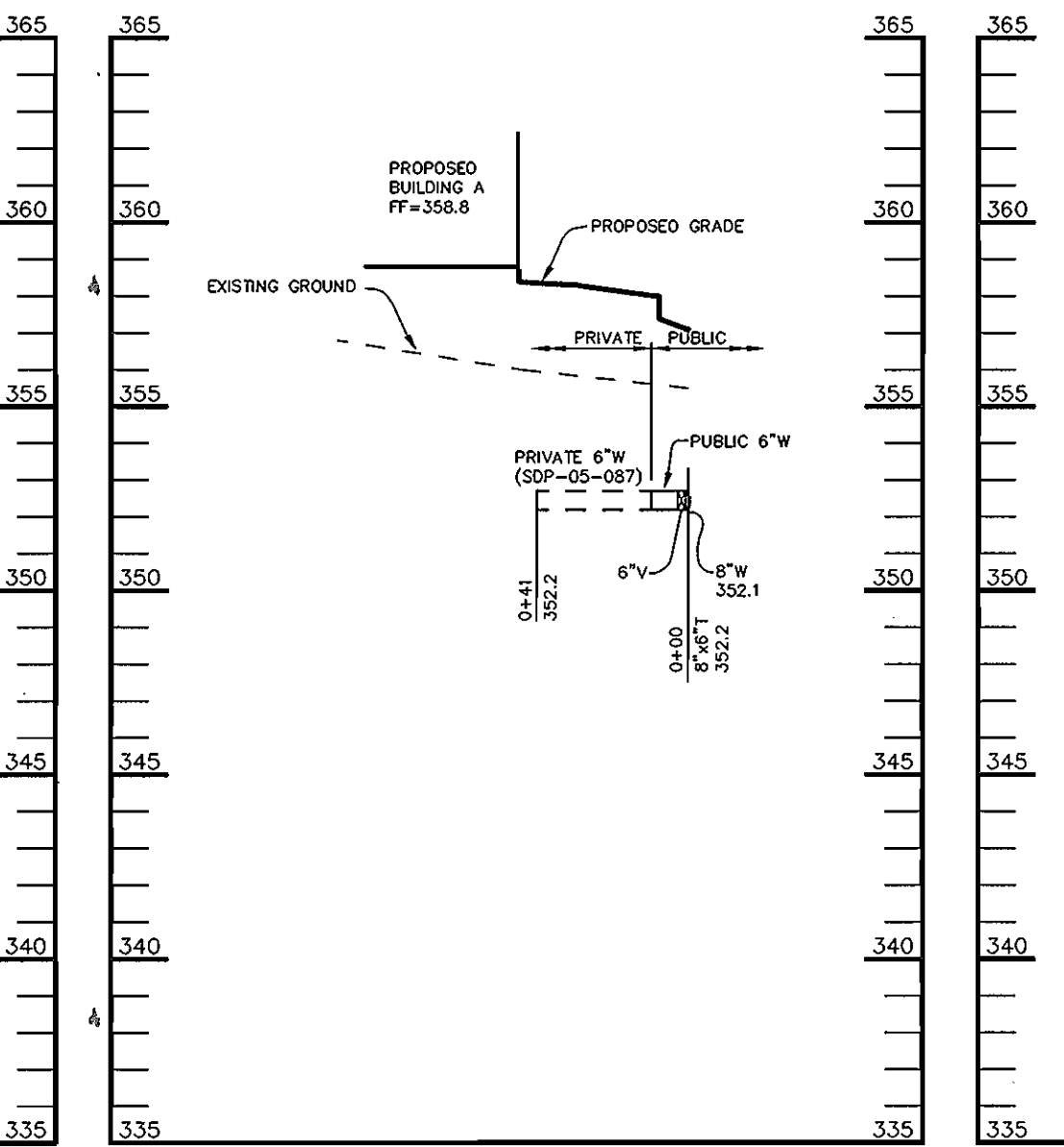
AS BUILT
DATE: NOV. 2005

PLAN SCALE: 1"=50'

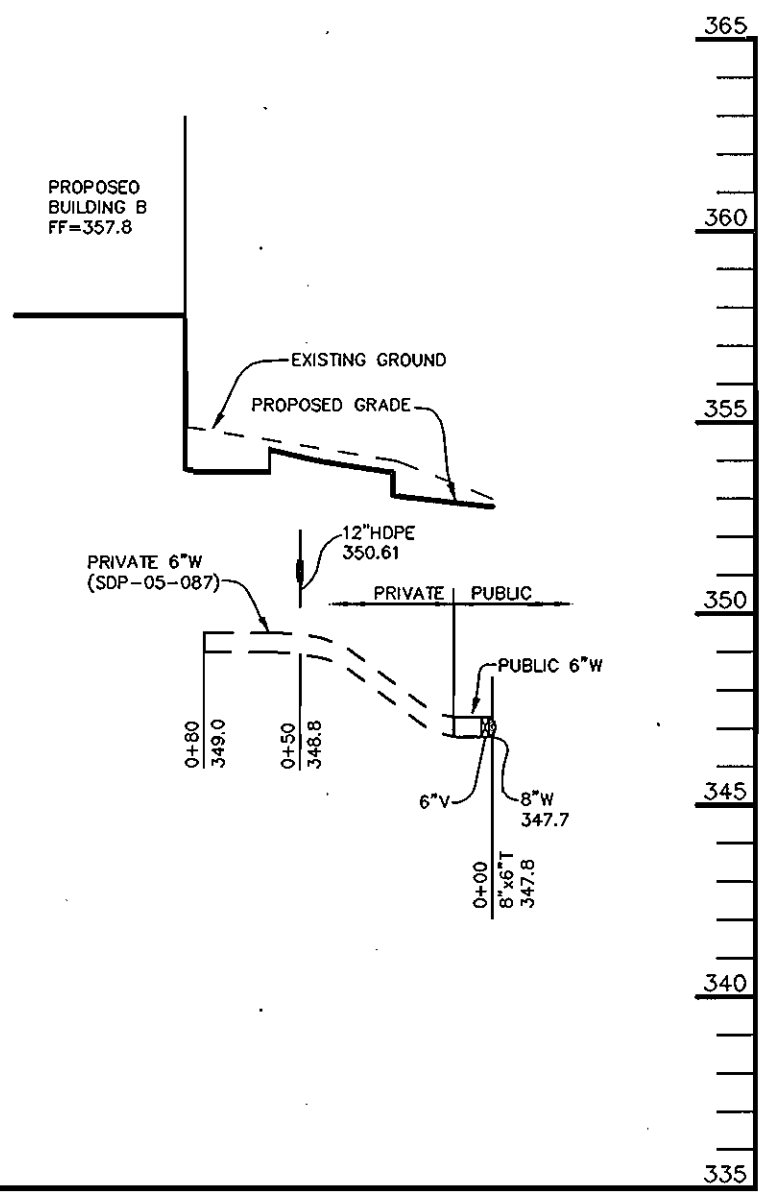
DEPARTMENT OF PUBLIC WORKS HOWARD COUNTY, MARYLAND Robert M. Beaman CHIEF, BUREAU OF UTILITIES 3-30-05 DATE	DEPARTMENT OF PLANNING & ZONING HOWARD COUNTY, MARYLAND Patton Harris Rust & Associates, PC Engineers, Surveyors, Planners, Landscape Architects. 8818 Centre Park Drive Columbia, MD 21045 T 410.997.8900 F 410.997.9282 Christopher J. Reid #19949 4/5/05 DATE	DES: C.J.R. DRN: DAM CHK: C.J.R. DATE: 3/10/05	PLAN VIEW OF A WATER MAIN 600' SCALE MAP NO. 42 BLOCK NO. 11,12	COLUMBIA GATEWAY PARCEL U-9 AND LOT 15 6th ELECTION DISTRICT HOWARD COUNTY, MARYLAND CONTRACT 24-4271-D SCALE AS SHOWN SHEET 2 OF 3
--	--	---	---	---



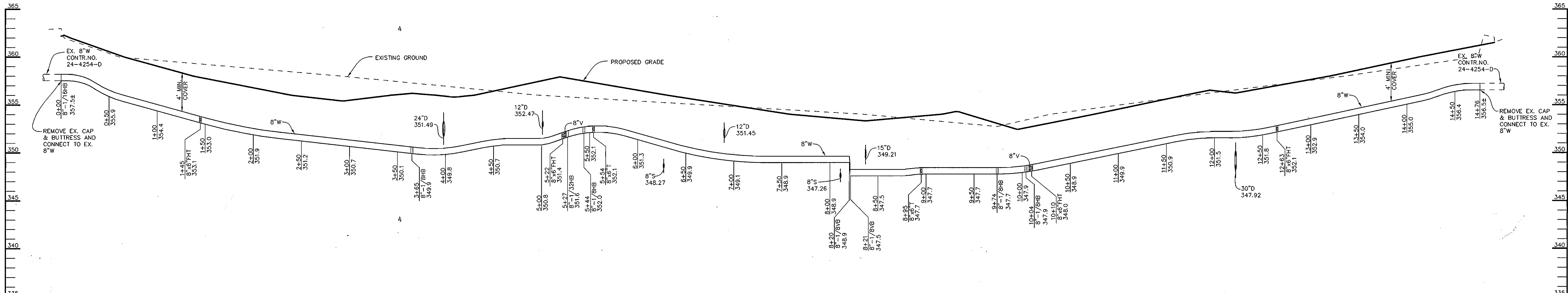
SEWER PROFILE
 SCALE:
 HOR. - 1"=50'
 VERT. - 1"=5'



WATER PROFILE
 SCALE:
 HOR. - 1"=50'
 VERT. - 1"=5'



WATER PROFILE
 SCALE:
 HOR. - 1"=50'
 VERT. - 1"=5'



WATER PROFILE
 SCALE:
 HOR. - 1"=50'
 VERT. - 1"=5'

AS BUILT
 DATE: NOV. 2005

DEPARTMENT OF PUBLIC WORKS HOWARD COUNTY, MARYLAND Chief, Bureau of Utilities 3-30-05 DATE	DEPARTMENT OF PLANNING & ZONING HOWARD COUNTY, MARYLAND Chief, Development Engineering Division 4/5/05 DATE	Patton Harris Rust & Associates, PC Engineers, Surveyors, Planners, Landscape Architects. PHRA 8818 Centre Park Drive Columbia, MD 21045 T 410.997.8900 F 410.997.9282	CHRISTOPHER J. REID PROFESSIONAL ENGINEER 3.10.05 #19949	DES: C.J.R. DRN: DAM CHK: C.J.R. DATE: 3/10/05	BY NO. REVISION DATE	600' SCALE MAP NO. 42 BLOCK NO. 11,12	COLUMBIA GATEWAY PARCEL U-9 AND LOT 15 6th ELECTION DISTRICT HOWARD COUNTY, MARYLAND CONTRACT 24-4271-D	SCALE AS SHOWN SHEET 3 OF 3
--	---	--	---	---	----------------------	---------------------------------------	---	--------------------------------