

GENERAL NOTES

PART I

- APPROXIMATE LOCATION OF EXISTING MAINS ARE SHOWN. THE CONTRACTOR SHALL TAKE ALL NECESSARY PRECAUTIONS TO PROTECT EXISTING MAINS AND SERVICES AND MAINTAIN UNINTERRUPTED SERVICE. ANY DAMAGE INCURRED SHALL BE REPAIRED IMMEDIATELY TO THE SATISFACTION OF THE ENGINEER AT THE CONTRACTOR'S EXPENSE.
- ALL HORIZONTAL CONTROLS ARE BASED ON MARYLAND STATE COORDINATES (NORTH AMERICAN DATUM OF 1983 (NAD 83)).
- ALL VERTICAL CONTROLS ARE BASED ON U.S.G.S. DATA.
- ALL PIPE ELEVATIONS SHOWN ARE INVERT ELEVATIONS.
- CLEAR ALL UTILITIES BY A MINIMUM OF 12 INCHES. CLEAR ALL POLES BY 2'0" MINIMUM OR TUNNEL AS REQUIRED UNLESS OTHERWISE NOTED. THE OWNER HAS CONTACTED THE UTILITY COMPANIES AND HAS MADE ARRANGEMENTS FOR BRACING OF POLES AS SHOWN ON DRAWINGS IN THE EVENT THE CONTRACTOR'S WORK REQUIRES THE BRACING OF ADDITIONAL POLES. ANY COST INCURRED BY THE OWNER FOR BRACING OF ADDITIONAL POLES OR DAMAGES SHALL BE DEDUCTED FROM MONIES OWED THE CONTRACTOR. THE CONTRACTOR SHALL COORDINATE WITH THE UTILITY COMPANIES TO SCHEDULE THE BRACING OF THE POLES.
- FOR DETAILS NOT SHOWN ON THE DRAWINGS, AND FOR MATERIALS AND CONSTRUCTION METHODS USE HOWARD COUNTY DESIGN MANUAL, VOLUME IV, STANDARD SPECIFICATIONS AND DETAILS FOR CONSTRUCTION (LATEST EDITION). THE CONTRACTOR SHALL HAVE A COPY OF VOLUME IV ON THE JOB.
- WHERE TEST PITS HAVE BEEN MADE ON EXISTING UTILITIES, THEY ARE NOTED BY THE SYMBOL AT THE LOCATION OF THE TEST PIT. A NOTES OR NOTES CONTAINING THE RESULTS OF THE TEST PIT OR PITS IS INCLUDED ON THE DRAWINGS. EXISTING UTILITIES IN THE VICINITY OF THE PROPOSED WORK FOR WHICH TEST PITS HAVE NOT BEEN DUG SHALL BE LOCATED BY THE CONTRACTOR TWO WEEKS IN ADVANCE OF CONSTRUCTION OPERATION AT HIS OWN EXPENSE.
- THE CONTRACTOR SHALL NOTIFY THE FOLLOWING UTILITY COMPANIES OR AGENCIES AT LEAST FIVE WORKING DAYS BEFORE STARTING WORK SHOWN THESE PLANS:
 AT & T 1-800-252-1133
 BGE (CONTRACTOR SERVICE) 410-850-4620
 BGE (UNDERGROUND DAMAGE CONTROL) 410-291-4607
 BUREAU OF UTILITIES 410-313-4900
 COLONIAL PIPELINE CO. 410-549-4120
 MISS UTILITY 1-800-257-7777
 STATE HIGHWAY ADMINISTRATION 410-531-5533
 VERIZON 1-800-743-0033/410-224-9210
- TREES AND SHRUBS ARE TO BE PROTECTED FROM DAMAGE TO THE MAXIMUM EXTENT. TREES AND SHRUBS LOCATED WITHIN THE CONSTRUCTION STRIP ARE NOT TO BE REMOVED OR DAMAGED BY THE CONTRACTOR.
- THE CONTRACTOR SHALL REMOVE TREES, STUMPS AND ROOTS ALONG THE LINE OF EXCAVATION. PAYMENT FOR SUCH REMOVAL SHALL BE INCLUDED IN THE UNIT PRICE BID FOR THE CONSTRUCTION OF THE MAIN.
- THE CONTRACTOR SHALL NOTIFY THE BUREAU OF HIGHWAYS, HOWARD COUNTY, AT (410) 313-7450 AT LEAST FIVE WORKING DAYS BEFORE ANY OPEN CUTTING OR BORING JACKING OF ANY COUNTY ROAD FOR LAYING BORING/JACKING OPERATION IN COUNTY ROADS FOR LAYING WATER/SEWER MAIN OR HOUSE CONNECTIONS. THE APPROVAL OF THESE DRAWINGS WILL CONSTITUTE COMPLIANCE WITH DPW REQUIREMENTS PER SECTION 18.114(o) OF THE HOWARD COUNTY CODE.
- THE CONTRACTOR SHALL EXERCISE EXTREME CAUTION WHEN WORKING NEAR AND/OR AROUND OVERHEAD UTILITY WIRES.

PART II - WATER

- ALL WATER MAINS TO BE D.I.P. CLASS 52 UNLESS OTHERWISE NOTED.
- TOPS OF ALL WATER MAINS TO HAVE A MINIMUM OF 3'-6" COVER UNLESS OTHERWISE NOTED.
- VALVES ADJACENT TO TEES SHALL BE STRAPPED TO TEES.
- ALL FITTINGS SHALL BE BUTTRESSED OR ANCHORED WITH CONCRETE IN ACCORDANCE WITH THE STANDARD DETAILS UNLESS OTHERWISE PROVIDED FOR ON THE DRAWINGS.
- FIRE HYDRANTS SHALL BE SET TO THE BURY LINE ELEVATIONS SHOWN ON THE DRAWINGS. ALL FIRE HYDRANTS SHALL BE RESTRAINED AND BUTTRESSED WITH CONCRETE IN ACCORDANCE WITH STANDARD DETAILS. THE SOIL AROUND THE FIRE HYDRANT SHALL BE COMPACTED IN ACCORDANCE WITH SECTION 1000 AND 1005 OF THE STANDARD SPECIFICATIONS.
- THE CONTRACTOR SHALL NOT OPERATE ANY WATER MAIN VALVES ON THE EXISTING WATER SYSTEM.
- ALL WATER HOUSE CONNECTIONS SHALL BE FOR INSIDE METER SETTING UNLESS OTHERWISE NOTED ON PLANS OR IN SPECIFICATIONS.

PART III - SEWER

- ALL SEWER MAINS SHALL BE D.I.P. OR P.V.C UNLESS OTHERWISE NOTED.
- ALL MANHOLES SHALL BE 4'-0" INSIDE DIAMETER UNLESS OTHERWISE NOTED.
- FORCE MAINS SHALL BE D.I.P. ONLY.
- MANHOLES SHOWN WITH 12" AND 16" WALLS ARE FOR BRICK MANHOLES ONLY.
- MANHOLES DESIGNATED W.T. IN PLAN AND PROFILE SHALL HAVE WATER TIGHT FRAME AND COVER, STANDARD DETAIL G5.52. WHERE WATER TIGHT MANHOLE FRAME AND COVERS ARE USED, SET TOP OF FRAME 1'-6" ABOVE FINISHED GRADE UNLESS OTHERWISE NOTED ON THE DRAWINGS.
- HOUSE(S) WITH THE SYMBOL "C.N.S." INDICATES THAT CELLAR CANNOT BE SERVED.

SEDIMENT CONTROL MEASURES WILL BE IMPLEMENTED IN ACCORDANCE WITH SECTION 219 OF THE SPECIFICATIONS AND WITH SITE DEVELOPMENT PLAN SDP-01-133

THIS DEVELOPMENT IS APPROVED FOR SOIL EROSION AND SEDIMENT CONTROL BY THE HOWARD COUNTY SOIL CONSERVATION DISTRICT.

REVIEWED FOR HOWARD COUNTY SOIL CONSERVATION DISTRICT AND MEETS TECHNICAL REQUIREMENTS.

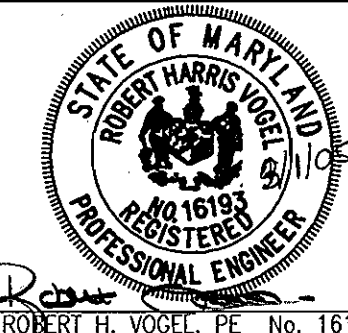
John K. Roberts 3/2/05
 SOIL CONSERVATION DISTRICT DATE

Jim Meyer 3/2/05
 U.S. SOIL CONSERVATION DISTRICT DATE

DEPARTMENT OF PUBLIC WORKS
 HOWARD COUNTY, MARYLAND

DEPARTMENT OF PLANNING & ZONING
 HOWARD COUNTY, MARYLAND

ROBERT H. VOGEL
ENGINEERING, INC.
 ENGINEERS • SURVEYORS • PLANNERS
 8407 MAIN STREET TEL: 410.461.7666
 ELLICOTT CITY, MD 21043 FAX: 410.461.8961



ROBERT H. VOGEL, P.E. No. 16193

DES:	JCO				
DRN:	DZ				
CHK:	RHV	K.C.1	2	AS-BUILT DATA ADDED TO PLAN	11/30/05
DATE:	MARCH 2005	DZ	1	LABEL SMH-8050 AND ABANDON 3HC	03-22-05
BY:	NO.			REVISION	DATE

FINAL WATER AND SEWER
 COVER SHEET

THE SMITH BUILDING
 VILLAGE OF OWEN BROWN
 SECTION 2, AREA 2
 CONTRACT NO. 24-4268-D

TAX MAP 42, BLOCK 3
 6TH ELECTION DISTRICT

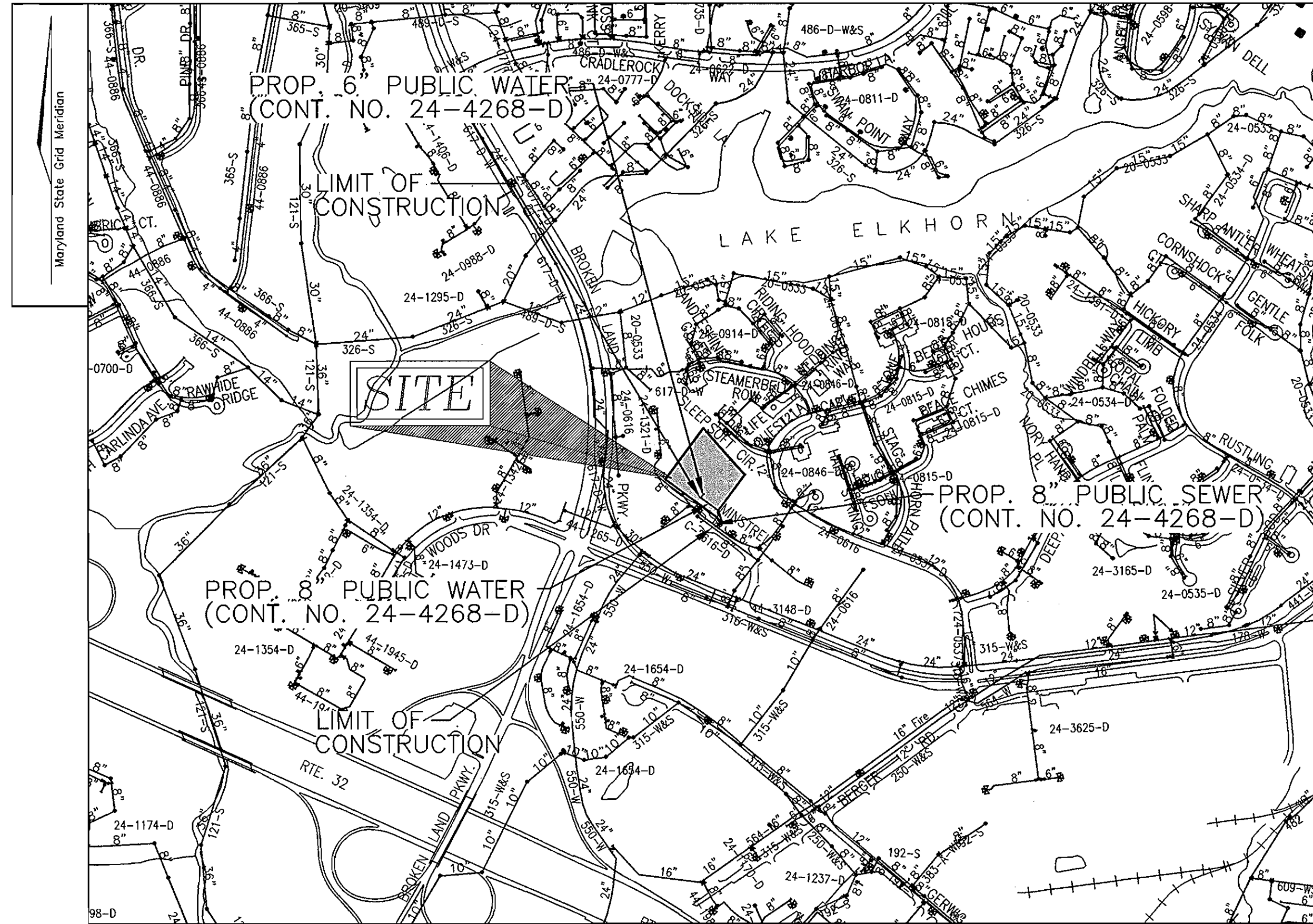
PARCEL A-36
 HOWARD COUNTY, MARYLAND

SCALE
 AS
 SHOWN

SHEET
 1 of 2

THE SMITH BUILDING VILLAGE OF OWEN BROWN SECTION 2, AREA 2

FINAL PUBLIC WATER AND SEWER CONSTRUCTION PLAN HOWARD COUNTY, MARYLAND CONTRACT NO. 24-4268-D



LOCATION MAP

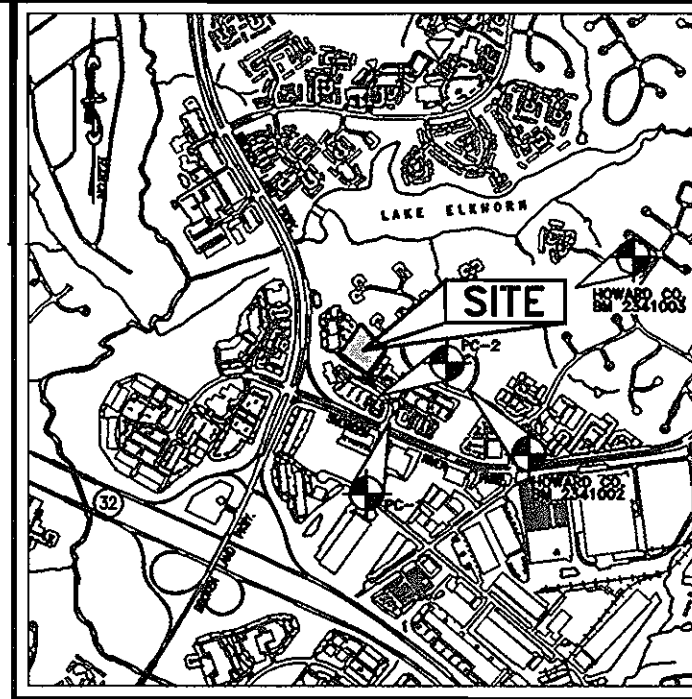
SCALE: 1"=600'

WATER CODE: E12
 SEWER CODE: 5272200
 TEST GRADIENT: 700

TYPE OF BUILDING:	COMMERCIAL
NO. OF UNITS/PARCELS:	ONE
NO. OF WATER HOUSE CONNECTIONS:	ONE
NO. OF SEWER HOUSE CONNECTIONS:	ONE
DRAINAGE AREA:	LITTLE PATUXENT RIVER
TREATMENT PLANT:	SAVAGE

BENCHMARKS:

HOWARD COUNTY BENCH MARK NO. 2341002	ELEV. 359.68
CONCRETE MONUMENT LOCATED ON TRANSMISSION LINES (B&E TOWERS 29/29E) HALFWAY BETWEEN CURB AND SIDEWALK ON THE SOUTH SIDE OF CARVED STONE WAY.	
HOWARD COUNTY BENCH MARK NO. 2341003	ELEV. 367.23
CONCRETE MONUMENT LOCATED ON TRANSMISSION LINE R/W (B&E TOWERS 27/27E) 15'4" FROM THE END OF HICKORY LMB ROAD IN THE COMMUNITY OF HOPWELL.	
IRON ROD/PIPE ALONG MINSTREL WAY R/W (PC-1)	ELEV. 337.63
N 489304.30 E 844016.23	
IRON ROD/PIPE ALONG MINSTREL WAY R/W (PC-2)	ELEV. 350.43
N 489592.39 E 843916.83	

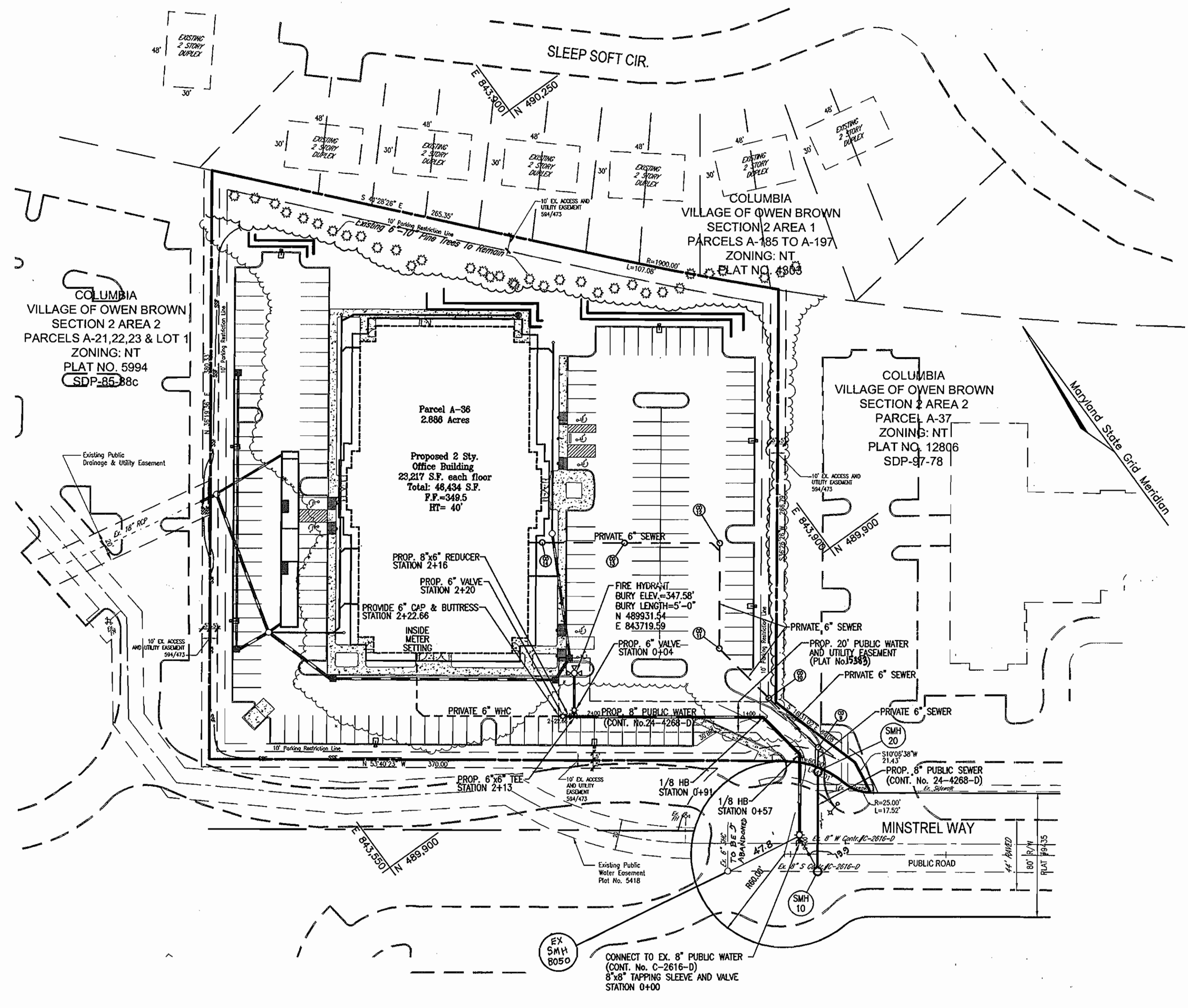


VICINITY MAP
 SCALE: 1"= 2000'

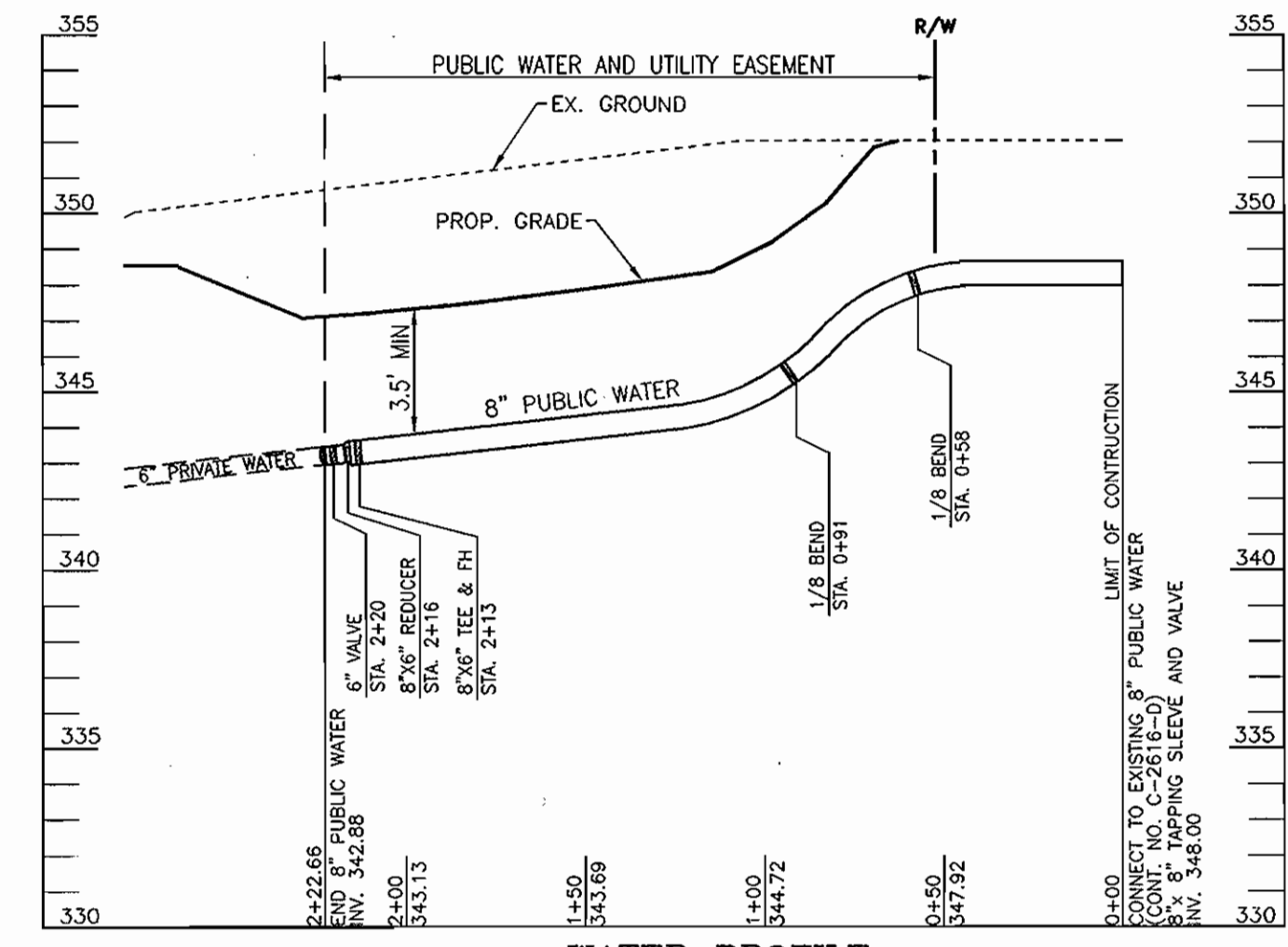
QUANTITIES

NAME OF UTILITY CONTRACTOR : *Acas BID EXCAVATION*
 SURVEY AND DRAFTING DIVISION AS-BUILT DATE :

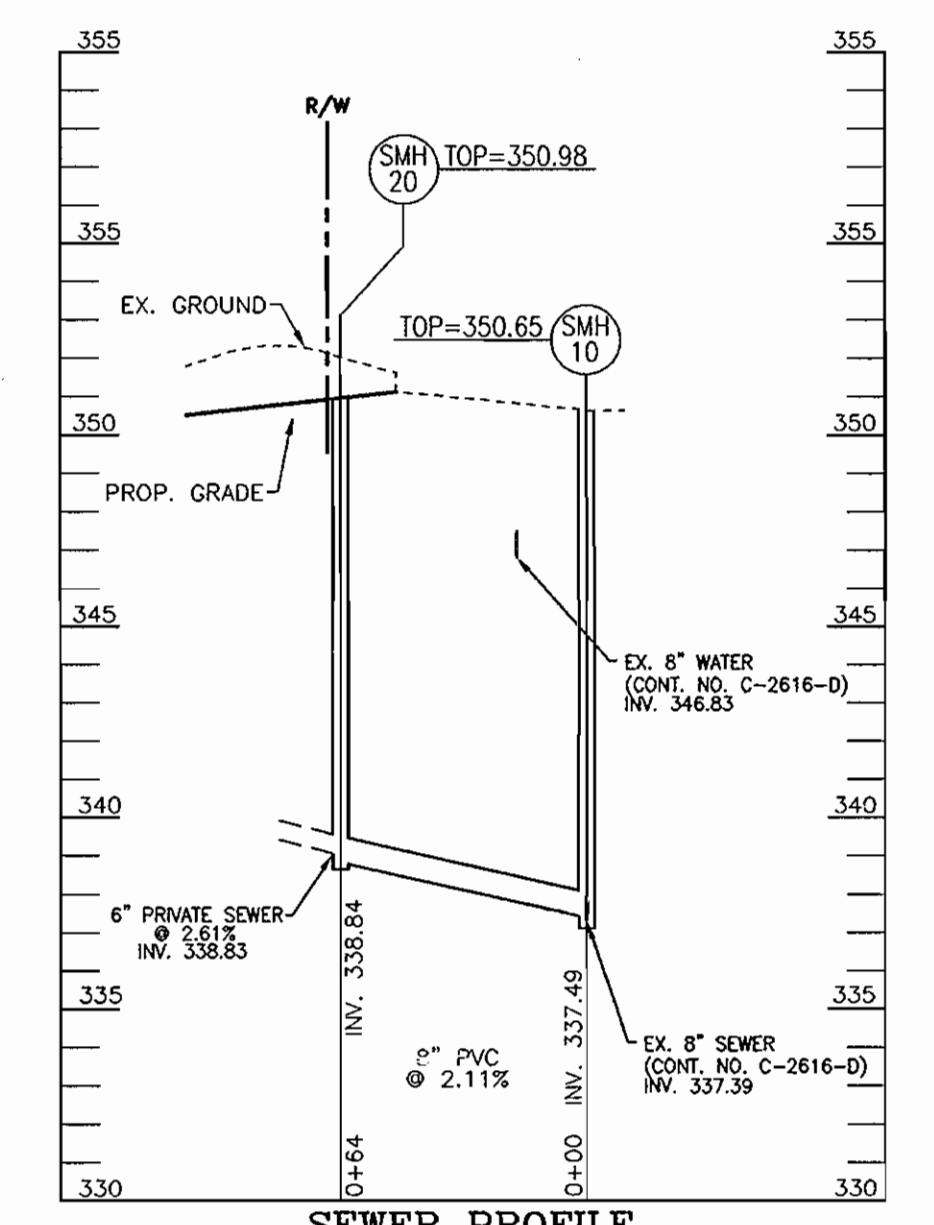
ITEMS	QUANTITIES ESTIMATED	AS-BUILT		
		QUANTITIES	TYPE	MANUFACTURER/SUPPLIER
WATER				
8" x 8" TAPPING SLEEVE	1 EA.	1 EA.	304 STAINLESS	FORD TAPPING SLEEVES
8" WATER	223 L.F.	223 L.F.	CL 52 D.I.P.	U.S. PIPE
6" WATER	28 L.F.	28 L.F.	CL 52 D.I.P.	U.S. PIPE
8" VALVE	1 EA.	1 EA.		KENNDY VALVE
6" VALVE	2 EA.	2 EA.		KENNDY VALVE
8" x 6" REDUCER	1 EA.	1 EA.		TYLER/UNION
FIRE HYDRANT	1 EA.	1 EA.		KENNDY GUARDIAN
6" CAP & BUTTRESS	1 EA.	1 EA.		TYLER/UNION
8" x 6" TEE	2 EA.	1 EA.		TYLER/UNION
8" - 1/8 BEND	2 EA.	2 EA.		TYLER/UNION
SEWER				
MANHOLES	2 EA.	2	DOG HOUSE PRECAST	CONTRACTOR'S PRECAST CORP
8" PVC SEWER	64 L.F.	64 L.F.	P.V.C SCH 40	CHARLOTT & PIPE AND FOUNDRY CO.



PLAN VIEW
SCALE: 1"=50'



WATER PROFILE
SCALE: HORIZONTAL - 1"=50'
VERTICAL - 1"=5'



SEWER PROFILE
SCALE: HORIZONTAL - 1"=50'
VERTICAL - 1"=5'

SEDIMENT CONTROL MEASURES WILL BE IMPLEMENTED IN ACCORDANCE WITH SECTION 219 OF THE SPECIFICATIONS AND WITH SITE DEVELOPMENT PLAN SDP-01-133

THIS DEVELOPMENT IS APPROVED FOR SOIL EROSION AND SEDIMENT CONTROL BY THE HOWARD COUNTY SOIL CONSERVATION DISTRICT.
John R. Robertson 3/2/05
SOIL CONSERVATION DISTRICT DATE

REVIEWED FOR HOWARD COUNTY SOIL CONSERVATION DISTRICT AND MEETS TECHNICAL REQUIREMENTS.
Jim Meyer 3/2/05
SOIL CONSERVATION DISTRICT DATE

OWNER/DEVELOPER
TSC MINSTREL WAY, LLC
C/O S. BRUCE JAFFE
THE SANFORD COMPANIES
11628 LOG JUMP TRAIL
ELLICOTT CITY, MARYLAND 21046

DEPARTMENT OF PUBLIC WORKS
HOWARD COUNTY, MARYLAND
R. H. Vogel 3-3-05
CHIEF, BUREAU OF UTILITIES DATE

DEPARTMENT OF PLANNING & ZONING
HOWARD COUNTY, MARYLAND
Robert H. Vogel 3/2/05
CHIEF, DEVELOPMENT ENGINEERING DIVISION DATE

ROBERT H. VOGEL ENGINEERING, INC.
ENGINEERS • SURVEYORS • PLANNERS
8407 MAIN STREET, ELLICOTT CITY, MD 21043
TEL: 410.461.7666 FAX: 410.461.8961



DES:	JCO				
DRN:	DZ				
CHK:	RHV	KCI	2	AS-BUILT DATA ADDED TO PLAN	11/20/05
DATE:	MARCH 2005	DZ	1	LABEL SMH-BOSO AND ABANDON 3HC	03-22-05
		BY	NO.	REVISION	DATE

FINAL WATER AND SEWER PLAN VIEW AND PROFILE

THE SMITH BUILDING VILLAGE OF OWEN BROWN SECTION 2, AREA 2 CONTRACT NO. 24-4268-D
TAX MAP 42, BLOCK 3 6TH ELECTION DISTRICT
PARCEL A-36 HOWARD COUNTY, MARYLAND

SCALE AS SHOWN
SHEET 2 OF 2