


GENERAL NOTES

PART I

- APPROXIMATE LOCATION OF EXISTING MAINS ARE SHOWN. THE CONTRACTOR SHALL TAKE ALL NECESSARY PRECAUTIONS TO PROTECT EXISTING MAINS AND SERVICES AND MAINTAIN UNINTERRUPTED SERVICE. ANY DAMAGE INCURRED SHALL BE REPAIRED IMMEDIATELY TO THE SATISFACTION OF THE ENGINEER AT THE CONTRACTORS EXPENSE.
- ALL HORIZONTAL CONTROLS ARE BASED ON MARYLAND STATE COORDINATES. (NORTH AMERICAN DATUM OF 1983 (NAD 83))
- ALL VERTICAL CONTROLS ARE BASED ON U.S.G.S. DATA.
- ALL PIPE ELEVATIONS SHOWN ARE INVERT ELEVATIONS.
- CLEAR ALL UTILITIES BY A MINIMUM OF 12 INCHES. CLEAR ALL POLES BY 2'.0" MINIMUM OR TUNNEL AS REQUIRED UNLESS OTHERWISE NOTED. THE OWNER HAS CONTACTED THE UTILITY COMPANIES AND HAS MADE ARRANGEMENTS FOR BRACING OF POLES AS SHOWN ON DRAWINGS IN THE EVENT THE CONTRACTOR'S WORK REQUIRES THE BRACING OF ADDITIONAL POLES. ANY COST INCURRED BY THE OWNER FOR BRACING OF ADDITIONAL POLES OR DAMAGES SHALL BE DEDUCTED FROM MONIES OWED THE CONTRACTOR. THE CONTRACTOR SHALL COORDINATE WITH THE UTILITY COMPANIES TO SCHEDULE THE BRACING OF THE POLES.
- FOR DETAILS NOT SHOWN ON THE DRAWINGS, AND FOR MATERIALS AND CONSTRUCTION METHODS USE HOWARD COUNTY DESIGN MANUAL, VOLUME IV, STANDARD SPECIFICATIONS AND DETAILS FOR CONSTRUCTION (LATEST EDITION). THE CONTRACTOR SHALL HAVE A COPY OF VOLUME IV ON THE JOB.
- WHERE TEST PITS HAVE BEEN MADE ON EXISTING UTILITIES, THEY ARE NOTED BY THE SYMBOL  AT THE LOCATION OF THE TEST PIT. A NOTES OR NOTES CONTAINING THE RESULTS OF THE TEST PIT OR PITS IS INCLUDED ON THE DRAWINGS. EXISTING UTILITIES IN THE VICINITY OF THE PROPOSED WORK FOR WHICH TEST PITS HAVE NOT BEEN DUG SHALL BE LOCATED BY THE CONTRACTOR TWO WEEKS IN ADVANCE OF CONSTRUCTION OPERATION AT HIS OWN EXPENSE.
- THE CONTRACTOR SHALL NOTIFY THE FOLLOWING UTILITY COMPANIES OR AGENCIES AT LEAST FIVE WORKING DAYS BEFORE STARTING WORK SHOWN THESE PLANS:  

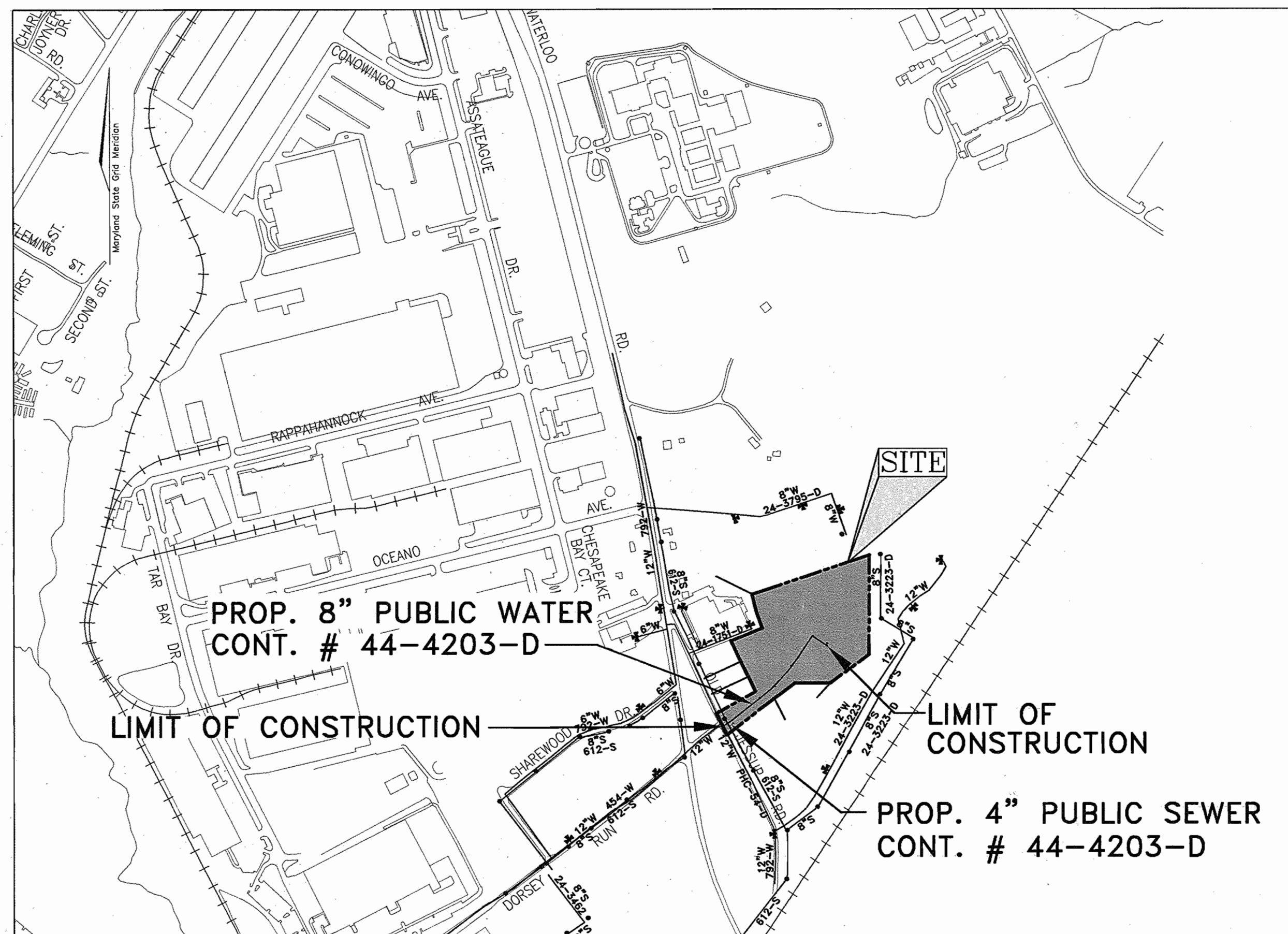
AT & T	1-800-252-1133
BGE (CONTRACTOR SERVICE)	410-850-4620
BGE (UNDERGROUND DAMAGE CONTROL)	410-291-4607
BUREAU OF UTILITIES	410-313-4900
COLONIAL PIPELINE CO	410-549-4120
MISS UTILITY	1-800-257-7777
STATE HIGHWAY ADMINISTRATION	410-531-5533
VERIZON	1-800-743-0033/410-224-9210
- TREES AND SHRUBS ARE TO BE PROTECTED FROM DAMAGE TO THE MAXIMUM EXTENT. TREES AND SHRUBS LOCATED WITHIN THE CONSTRUCTION STRIP ARE NOT TO BE REMOVED OR DAMAGED BY THE CONTRACTOR
- THE CONTRACTOR SHALL REMOVE TREES, STUMPS AND ROOTS ALONG THE LINE OF EXCAVATION. PAYMENT FOR SUCH REMOVAL SHALL BE INCLUDED IN THE UNIT PRICE BID FOR THE CONSTRUCTION OF THE MAIN.
- THE CONTRACTOR SHALL NOTIFY THE BUREAU OF HIGHWAYS, HOWARD COUNTY, AT (410) 313-7450 AT LEAST FIVE WORKING DAYS BEFORE ANY OPEN CUTTING OR BORING JACKING OF ANY COUNTY ROAD FOR LAYING BORING/JACKING OPERATION IN COUNTY ROADS FOR LAYING WATER/SEWER MAIN OR HOUSE CONNECTIONS. THE APPROVAL OF THESE DRAWINGS WILL CONSTITUTE COMPLIANCE WITH DPW REQUIREMENTS PER SECTION 18.114(0) OF THE HOWARD COUNTY CODE.
- THE CONTRACTOR SHALL EXERCISE EXTREME CAUTION WHEN WORKING NEAR AND/OR AROUND OVERHEAD UTILITY WIRES.

PART II - WATER

- ALL WATER MAINS TO BE D.I.P. CLASS 52 UNLESS OTHERWISE NOTED.
- TOPS OF ALL WATER MAINS TO HAVE A MINIMUM OF 3'-6" COVER UNLESS OTHERWISE NOTED.
- VALVES ADJACENT TO TEES SHALL BE STRAPPED TO TEES.
- ALL FITTINGS SHALL BE BUTTRESSED OR ANCHORED WITH CONCRETE IN ACCORDANCE WITH THE STANDARD DETAILS UNLESS OTHERWISE PROVIDED FOR ON THE DRAWINGS.
- FIRE HYDRANTS SHALL BE SET TO THE BURY LINE ELEVATIONS SHOWN ON THE DRAWINGS. ALL FIRE HYDRANTS SHALL BE RESTRAINED AND BUTTRESSED WITH CONCRETE IN ACCORDANCE WITH STANDARD DETAILS. THE SOIL AROUND THE FIRE HYDRANT SHALL BE COMPACTED IN ACCORDANCE WITH SECTION 1000 AND 1005 OF THE STANDARD SPECIFICATIONS.
- THE CONTRACTOR SHALL NOT OPERATE ANY WATER MAIN VALVES ON THE EXISTING WATER SYSTEM.
- ALL WATER HOUSE CONNECTIONS SHALL BE FOR INSIDE METER SETTING UNLESS OTHERWISE NOTED ON PLANS OR IN SPECIFICATIONS.

SEDIMENT CONTROL MEASURES WILL BE IMPLEMENTED IN ACCORDANCE WITH SECTION 219 OF THE SPECIFICATIONS AND WITH SITE DEVELOPMENT PLAN SDP-03-164

# AMERIGAS DORSEY RUN ROAD FINAL PUBLIC WATER & SEWER PLAN HOWARD COUNTY, MARYLAND CONTRACT NO. 44-4203-D





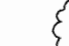

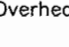
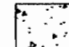
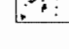


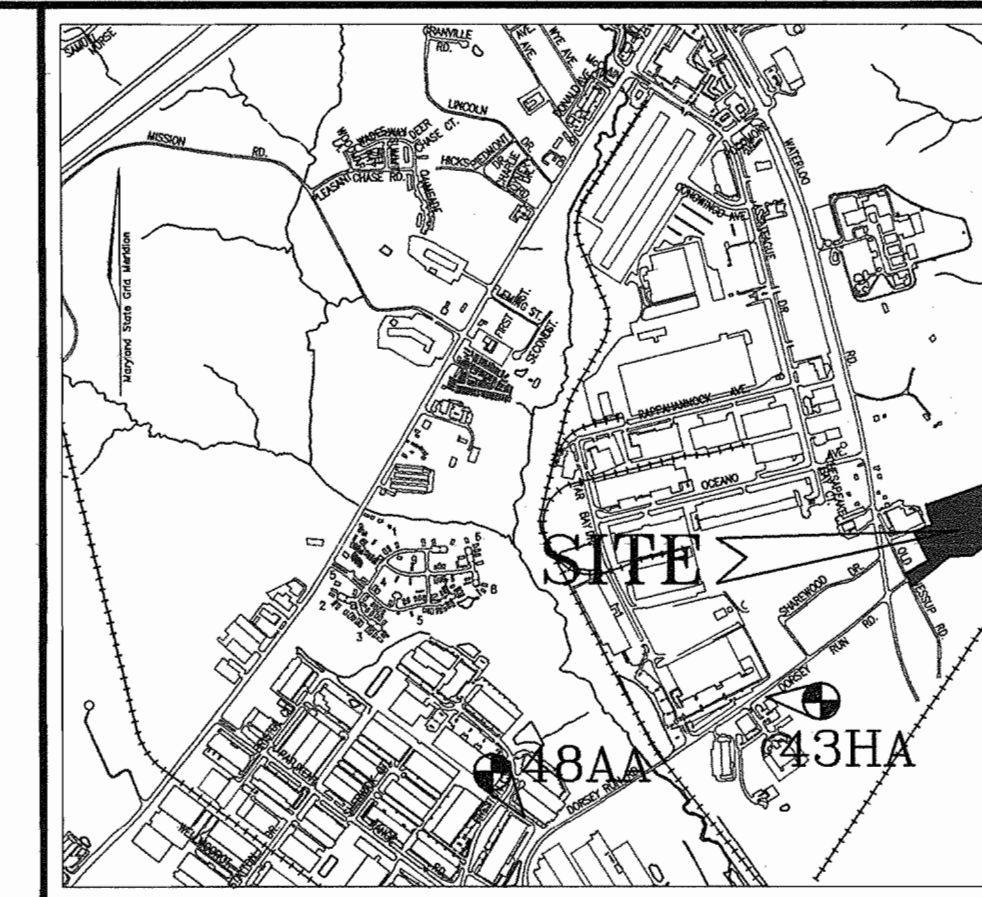
VICINITY MAP  
SCALE: 1"=600'

WATER CODE B-01  
SEWER CODE 3020000  
TEST GRADIENT 550

TYPE OF BUILDING:	COMMERCIAL
NO. OF UNITS/PARCELS:	ONE
NO. OF WATER HOUSE CONNECTIONS:	ONE
NO. OF SEWER HOUSE CONNECTIONS:	ONE
DRAINAGE AREA:	PATAPSCO WATERSHED
TREATMENT PLANT:	PATAPSCO WASTEWATER

LEGEND

- Existing Contour 
- Proposed Contour 
- Existing Spot Elevation 
- Proposed Spot Elevation 
- Direction of Flow 
- Existing Trees to Remain 
- Light Poles  Single Overhead  Double Overhead
- Concrete 



LOCATION MAP  
SCALE: 1"=2,000'

BENCHMARKS  
HOWARD COUNTY BENCHMARK 48 AA  
N 539,314.900 E 1,371,539.251 ELEV.: 240.78'  
HOWARD COUNTY BENCHMARK 43HA  
N 540,761.716 E 1,373,837.365 ELEV.: 224.89'

QUANTITIES

NAME OF UTILITY CONTRACTOR :				
SURVEY AND DRAFTING DIVISION AS-BUILT DATE :				
ITEMS	QUANTITIES ESTIMATED	AS-BUILT		
		QUANTITIES	TYPE	MANUFACTURER/SUPPLIER
WATER				
12"x8" TAPPING SLEEVE	1 EA.			
8" WATER	900 L.F.			
6" WATER	13 L.F.			
4" WATER	5 L.F.			
1" WHC	10 L.F.			
1-1/2" WHC	10 L.F.			
8" X 6" TEE	3 EA.			
8" X 8" TEE	1 EA.			
8" VALVE	1 EA.			
6" VALVE	3 EA.			
4" VALVE	1 EA.			
1" VALVE	1 EA.			
FIRE HYDRANT	3 EA.			
8" CAP & BUTRESS	1 EA.			
4" CAP & BUTRESS	1 EA.			
SEWER				
4" SHC	32 L.F.			
CLEAN OUT	1 EA.			

THIS DEVELOPMENT IS APPROVED FOR SOIL EROSION AND SEDIMENT CONTROL BY THE HOWARD COUNTY SOIL CONSERVATION DISTRICT.

REVIEWED FOR HOWARD COUNTY SOIL CONSERVATION DISTRICT AND MEETS TECHNICAL REQUIREMENTS.

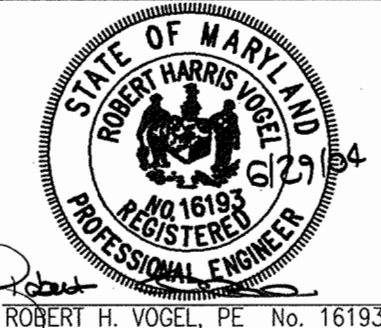
*John R. Roberts* 7/21/04  
SOIL CONSERVATION DISTRICT

*Jim Meyer* 7/21/04  
SOIL CONSERVATION DISTRICT

DEPARTMENT OF PUBLIC WORKS  
HOWARD COUNTY, MARYLAND  
*Ruth Bauman* 7-1-04  
CHIEF, BUREAU OF UTILITIES

DEPARTMENT OF PLANNING & ZONING  
HOWARD COUNTY, MARYLAND  
*John DeWitt* 7/21/04  
CHIEF, DEVELOPMENT ENGINEERING DIVISION

**ROBERT H. VOGEL ENGINEERING, INC.**  
ENGINEERS · SURVEYORS · PLANNERS  
8407 MAIN STREET  
ELlicOTT CITY, MARYLAND 21043  
TEL: 410.461.7666 FAX: 410.461.8961



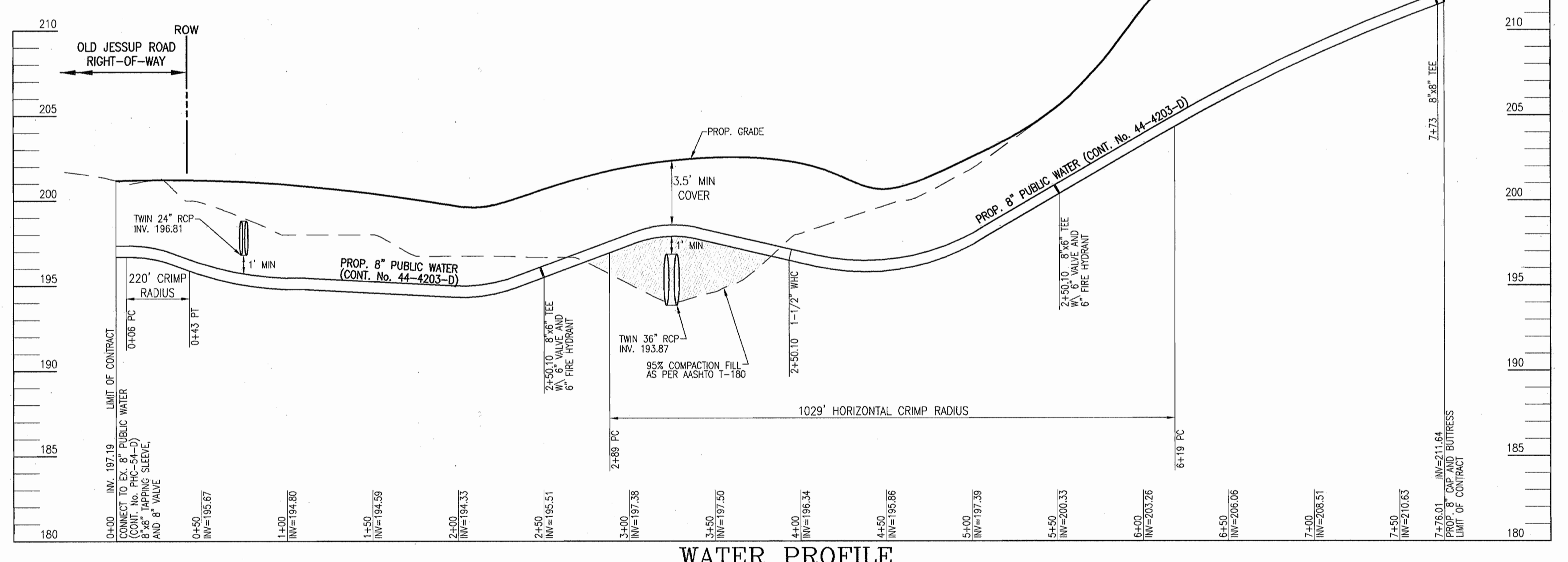
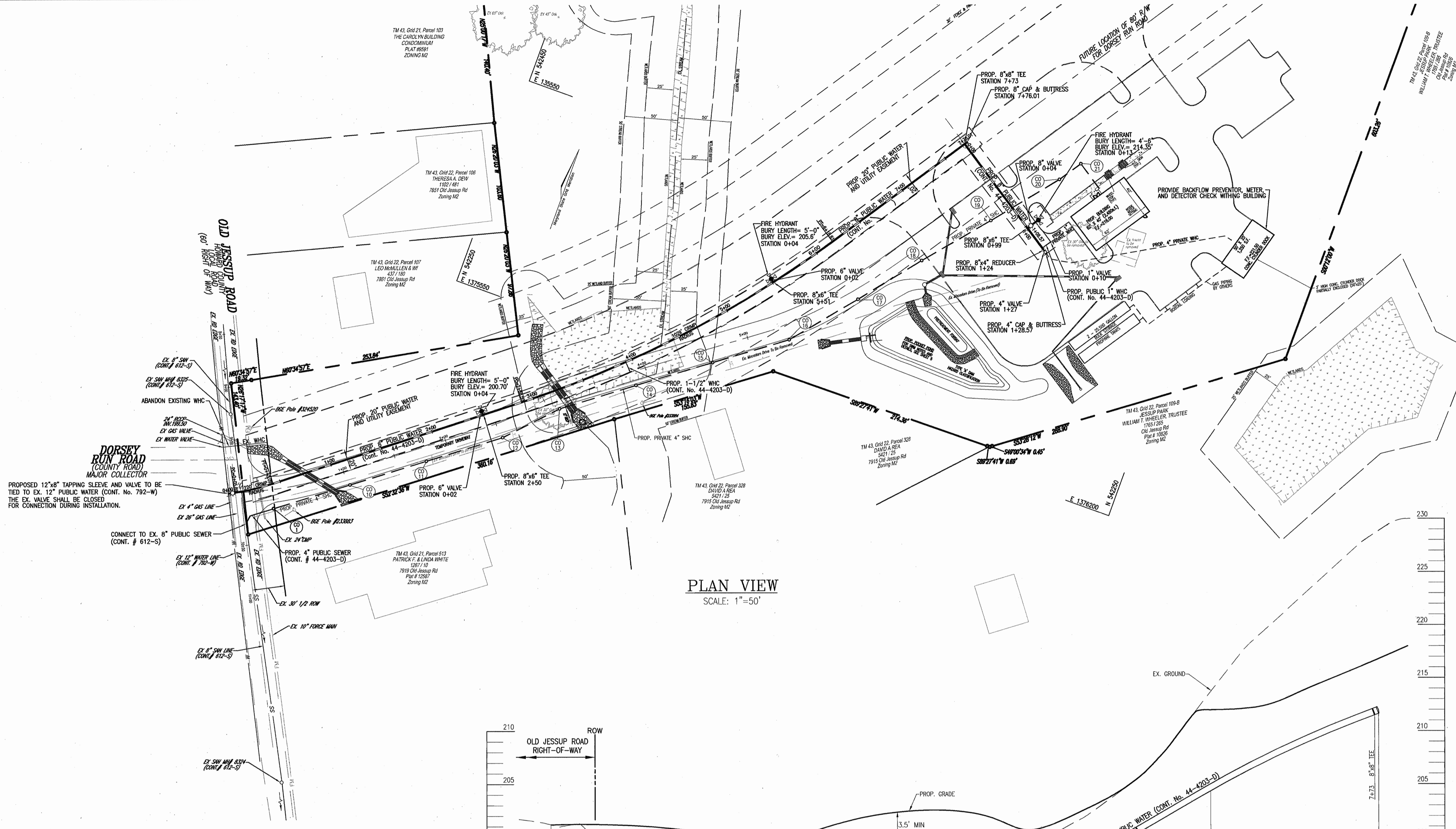
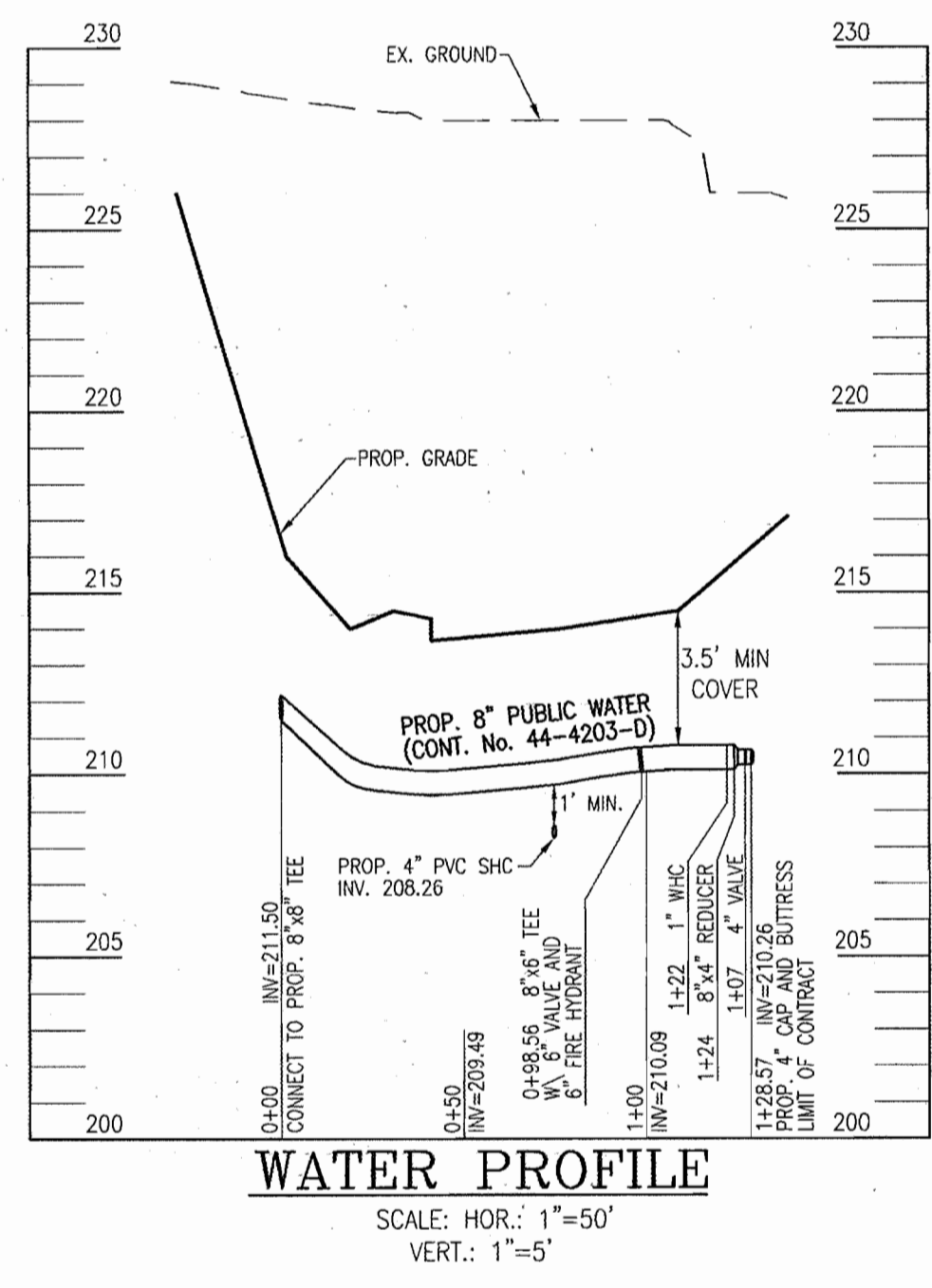
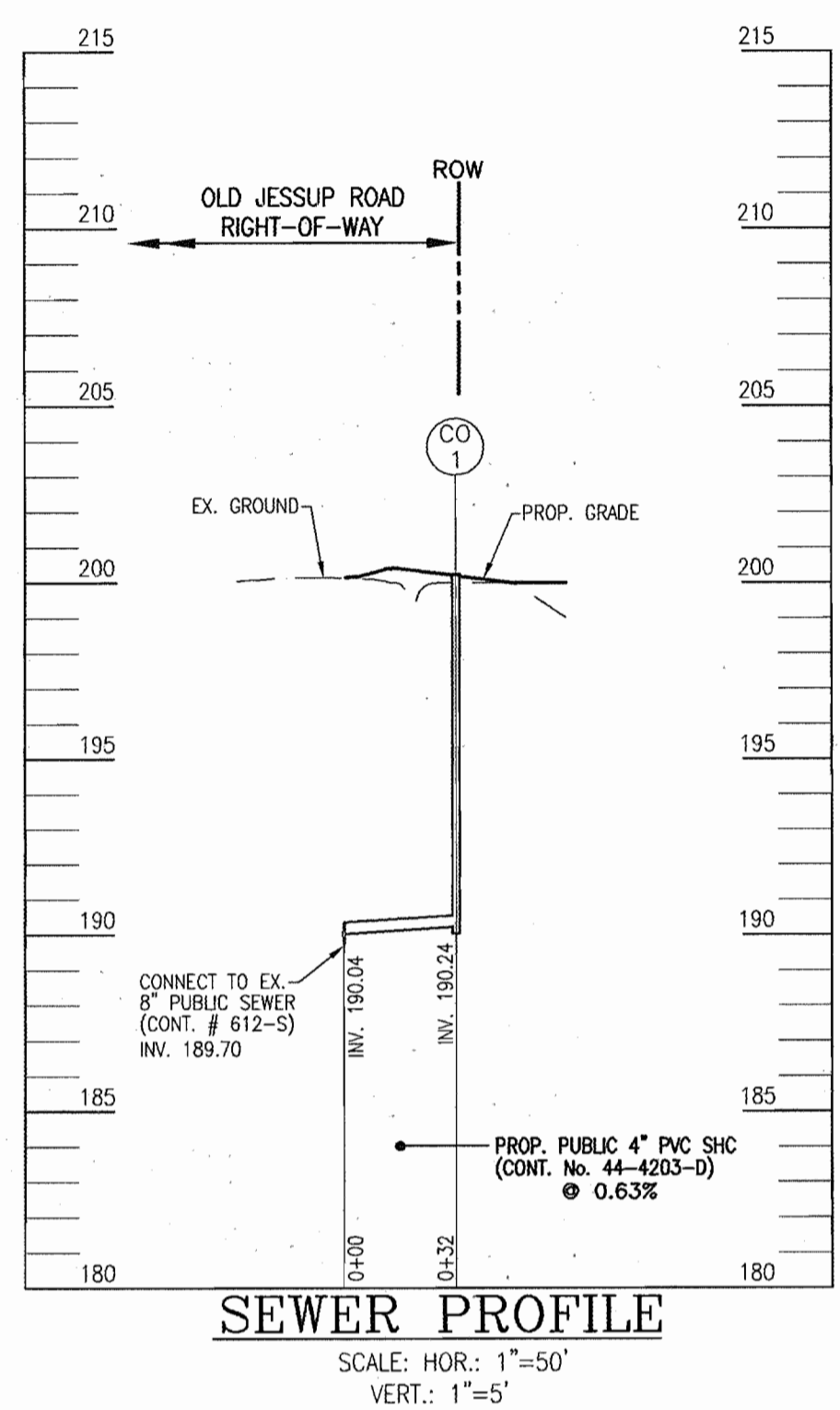
DES:	DZ			
DRN:	DZ			
CHK:	RHV			
DATE:	JUNE 2004	BY:	NO.	REVISION

**FINAL WATER & SEWER PLAN  
TITLE SHEET**

**AMERIGAS DORSEY RUN ROAD  
CONTRACT NO. 44-4203-D**

SCALE AS SHOWN  
SHEET 1 OF 2

TAX MAP 43, BLOCKS 22  
1ST ELECTION DISTRICT  
PARCEL 108  
HOWARD COUNTY, MARYLAND



SEDIMENT CONTROL MEASURES WILL BE IMPLEMENTED IN ACCORDANCE WITH SECTION 219 OF THE SPECIFICATIONS AND WITH SITE DEVELOPMENT PLAN SDP-03-164

THIS DEVELOPMENT IS APPROVED FOR SOIL EROSION AND SEDIMENT CONTROL BY THE HOWARD COUNTY SOIL CONSERVATION DISTRICT.

REVIEWED FOR HOWARD COUNTY SOIL CONSERVATION DISTRICT AND MEETS TECHNICAL REQUIREMENTS.

*John R. Robertson*  
SOIL CONSERVATION DISTRICT

7/2/04

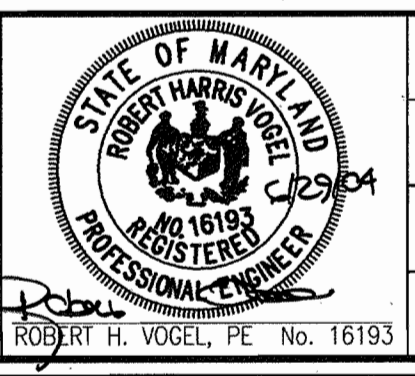
*Jim M. ...*  
U.S. SOIL CONSERVATION DISTRICT

7/2/04

DEPARTMENT OF PUBLIC WORKS  
HOWARD COUNTY, MARYLAND

DEPARTMENT OF PLANNING & ZONING  
HOWARD COUNTY, MARYLAND

**ROBERT H. VOGEL ENGINEERING, INC.**  
ENGINEERS • SURVEYORS • PLANNERS  
8407 MAIN STREET  
ELLICOTT CITY, MARYLAND 21043  
TEL: 410.461.7666 FAX: 410.461.8961



DES:	DZ								
DRN:	DZ								
CHK:	RHV								
DATE:	JUNE 2004	BY:	NO.	REVISION	DATE:	600' SCALE MAP NO.	43	BLOCK NO.	22

**FINAL WATER & SEWER PLAN  
PLAN AND PROFILE**

**AMERIGAS DORSEY RUN ROAD  
CONTRACT NO. 44-4203-D**

*John R. Robertson* 7-1-04  
CHIEF, BUREAU OF UTILITIES

*Jim M. ...* 7/27/04  
CHIEF, DEVELOPMENT ENGINEERING DIVISION

TAX MAP 43, BLOCKS 22  
1ST ELECTION DISTRICT

SCALE AS SHOWN  
SHEET 2 OF 2