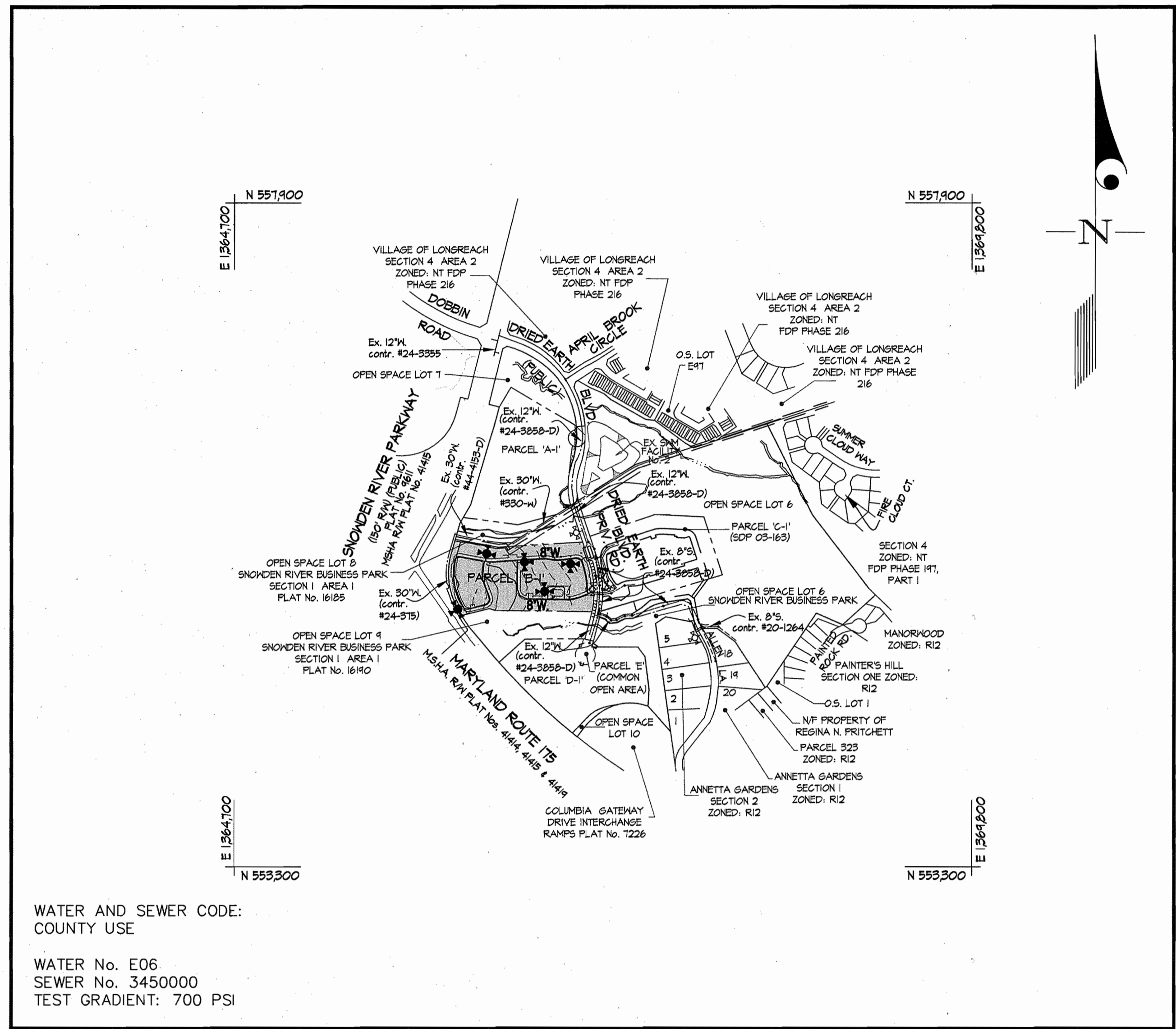


QUANTITIES				
ITEMS	QUANTITIES ESTIMATED	AS-BUILT		
		QUANTITIES	TYPE	MANUFACTURER/SUPPLIER
6" WATER	41 LF.			
8" WATER MAIN	301.8 LF.			
8"x8" TEE	6 EA.			
8" 1/8 H.B.	8 EA.			
8" 1/16 H.B.	6 EA.			
8" 1/32 V.B.	10 EA.			
6" VALVE (FH)	5 EA.			
8" VALVE	8 EA.			
8" CAP				
8"x6" FHT	5 EA.			
FIRE HYDRANT	5 EA.			
1" MHC	1286 LF.			
1 1/2" MHC	23 LF.			
NAME OF UTILITY CONTRACTOR:				
SURVEY AND DRAFTING DIV.		CHECKBOX: AS-BUILT DATE:		

TYPE OF BUILDING	TOWNHOUSE
NUMBER OF UNITS	16
NUMBER OF S.H.C.'s	N/A
NUMBER OF W.H.C.'s	14 (SINGLE) (TWIN)
DRAINAGE AREA	N/A
TREATMENT PLANT	N/A



WATER AND SEWER CODE:
COUNTY USE

WATER No. E06
SEWER No. 3450000
TEST GRADIENT: 700 PSI

VICINITY MAP
SCALE: 1" = 600'

- GENERAL NOTES**
- PART I**
- APPROXIMATE LOCATIONS OF EXISTING MAINS ARE SHOWN. THE CONTRACTOR SHALL TAKE ALL NECESSARY PRECAUTIONS TO PROTECT EXISTING MAINS AND SERVICES AND MAINTAIN UNINTERRUPTED SUPPLY. ANY DAMAGE INCURRED SHALL BE REPAIRED IMMEDIATELY TO THE SATISFACTION OF THE ENGINEER AT THE CONTRACTOR'S EXPENSE.
 - ALL HORIZONTAL CONTROLS ARE BASED ON MARYLAND STATE COORDINATES, NAD 83/11.
 - ALL VERTICAL CONTROLS ARE BASED ON NAVD 88.
 - ALL PIPE ELEVATIONS SHOWN ARE INVERT ELEVATIONS UNLESS OTHERWISE NOTED ON THE PLANS.
 - CLEAR ALL UTILITIES BY A MINIMUM OF 12". CLEAR ALL POLES BY 5'-0" MINIMUM OR TUNNEL AS REQUIRED UNLESS OTHERWISE NOTED. THE OWNER HAS CONTACTED THE UTILITY COMPANIES AND HAS MADE ARRANGEMENTS FOR BRACING OF POLES AS SHOWN ON THE DRAWINGS. IN THE EVENT THE CONTRACTOR'S WORK REQUIRES THE BRACING OF ADDITIONAL POLES, ANY COST INCURRED BY THE OWNER FOR THE BRACING OF ADDITIONAL POLES OR DAMAGES SHALL BE DEDUCTED FROM MONIES OWED THE CONTRACTOR. THE CONTRACTOR SHALL COORDINATE WITH THE UTILITY COMPANIES TO SCHEDULE THE BRACING OF THE POLES.
 - FOR DETAILS NOT SHOWN ON THE DRAWINGS, AND FOR MATERIALS AND CONSTRUCTION METHODS USE HOWARD COUNTY DESIGN MANUAL, VOLUME IV, STANDARD SPECIFICATIONS AND DETAILS FOR CONSTRUCTION (LATEST EDITION). THE CONTRACTOR SHALL HAVE A COPY OF VOLUME IV ON THE JOB.
 - WHERE TEST PITS HAVE BEEN MADE ON EXISTING UTILITIES, THEY ARE NOTED BY THE SYMBOL AT THE LOCATIONS OF THE TEST PIT. A NOTE OR NOTES CONTAINING THE RESULTS OF THE TEST PIT OR PITS IS INCLUDED ON THE DRAWINGS. EXISTING UTILITIES IN THE VICINITY OF THE PROPOSED WORK FOR WHICH TEST PITS HAVE NOT BEEN DUG SHALL BE LOCATED BY THE CONTRACTOR TWO WEEKS IN ADVANCE OF CONSTRUCTION OPERATIONS AT HIS OWN EXPENSE.
 - THE CONTRACTOR SHALL NOTIFY THE FOLLOWING UTILITY COMPANIES OR AGENCIES AT LEAST (5) WORKING DAYS BEFORE STARTING WORK SHOWN ON THESE PLANS:
- | | |
|------------------------------------|-----------------------------|
| AT&T | 1-800-252-1133 |
| EDGE (CONTRACTOR SERVICES) | 410-850-4620 |
| EDGE (UNDER GROUND DAMAGE CONTROL) | 410-181-4068 |
| BUREAU OF UTILITIES | 410-313-4800 |
| COLONIAL PIPELINE CO. | 410-195-1390 |
| MISS UTILITY | 1-800-251-7777 |
| STATE HIGHWAY ADMINISTRATION | 410-531-5533 |
| VERIZON | 1-800-743-0033/410-224-4210 |
- TREES AND SHRUBS ARE TO BE PROTECTED FROM DAMAGE TO MAXIMUM EXTENT. TREES AND SHRUBS LOCATED WITHIN THE CONSTRUCTION STRIP ARE NOT TO BE REMOVED OR DAMAGED BY THE CONTRACTOR.
 - THE CONTRACTOR SHALL REMOVE TREES, STUMPS AND ROOTS ALONG LINE OF EXCAVATION. PAYMENT FOR SUCH REMOVAL SHALL BE INCLUDED IN THE UNIT PRICE BID FOR CONSTRUCTION OF THE MAIN.
 - THE CONTRACTOR SHALL NOTIFY THE BUREAU OF HIGHWAYS, HOWARD COUNTY, AT 410-313-2450 AT LEAST FIVE (5) WORKING DAYS BEFORE ANY OPEN CUTTING OR BORING/JACKING OF ANY COUNTY ROAD OR BORING/JACKING OPERATION ON COUNTY ROADS FOR LAYING WATER/SEWER MAINS OR HOUSE CONNECTIONS. THE APPROVAL OF THESE DRAWINGS WILL CONSTITUTE COMPLIANCE WITH DPW REQUIREMENT PER SECTION 18.114(A) OF THE HOWARD COUNTY CODE.
- PART II - WATER**
- ALL WATER MAINS TO BE D.I.P. CLASS 52 UNLESS OTHERWISE NOTED.
 - TOPS OF ALL WATER MAINS SHALL HAVE A MINIMUM OF 3'-6" COVER UNLESS OTHERWISE NOTED.
 - VALVES ADJACENT TO TEES SHALL BE STRAPPED TO TEES.
 - ALL FITTINGS SHALL BE BUTTRESSED OR ANCHORED WITH CONCRETE IN ACCORDANCE WITH THE STANDARD DETAILS UNLESS OTHERWISE PROVIDED FOR ON THE DRAWINGS.
 - FIRE HYDRANTS SHALL BE SET TO THE BURY LINE ELEVATIONS SHOWN ON THE DRAWINGS. ALL FIRE HYDRANTS SHALL BE INSTALLED IN ACCORDANCE WITH STANDARD DETAILS. SOIL AROUND THE FIRE HYDRANT SHALL BE COMPACTED IN ACCORDANCE WITH SECTION 1000 AND 1005 OF THE STANDARD SPECIFICATIONS.
 - THE CONTRACTOR SHALL NOT OPERATE ANY WATER MAIN VALVES ON THE EXISTING WATER SYSTEM.

BENCHMARK DESCRIPTIONS

STATION 2542001 (CONCRETE MONUMENT)
ELEV. 426.471 (FOR VERTICAL CONTROL ONLY) STATION IS LOCATED ON E. TRANSMISSION LINES 10602 S.W. OF DOBBIN ROAD

STATION 2542002 (CONCRETE MONUMENT)
ELEV. 363.630 (FOR VERTICAL CONTROL ONLY) STATION IS LOCATED 1000'S WEST OF RTE. 175 ON TRANSMISSION LINE # 6.E. TOWER 15.E.

STATION 561A (CONCRETE MONUMENT)
NAD 83/11 (FOR HORIZONTAL CONTROL ONLY) STATION IS LOCATED @ THE SOUTHEAST CORNER OF THE INTERSECTION OF SNOWDEN RIVER PARKWAY AND RTE. 175 3/4 FROM CURB AND 5.75 FROM GUARDRAIL END.

STATION 570R (1/2 REBAR)
NAD 83/11 (FOR HORIZONTAL CONTROL ONLY) STATION IS LOCATED 0.451 MILES NORTH OF RTE. 175 AND 46' EAST OF THE EAST CURB OF SNOWDEN RIVER FRONT.

SEDIMENT CONTROL MEASURES WILL BE IMPLEMENTED IN ACCORDANCE WITH SECTION 214 OF THE SPECIFICATIONS & WITH SITE DEVELOPMENT PLAN SDP 04-69; DRAWINGS FOR SEDIMENT & EROSION CONTROL.

REVIEWED FOR HOWARD SOIL CONSERVATION DISTRICT AND MEETS TECHNICAL REQUIREMENT.

John R. Ritten 6/24/04
SIGNATURE DATE

U.S.D.A. NATURAL RESOURCES CONSERVATION SERVICE

THIS DEVELOPMENT PLAN IS APPROVED FOR SOIL EROSION AND SEDIMENT CONTROL BY THE HOWARD SOIL CONSERVATION DISTRICT.

APPROVED: *John R. Ritten* 6/24/04
HOWARD S.C.D. DATE

OWNER / DEVELOPER:

PATRIOT HOMES, INC.
10211 WINGOPIN CIRCLE
SUITE 300
COLUMBIA, MARYLAND 21044

att: CINDY HUNTZBERRY
phone: 410-991-5522

CONTRACT No. 44-4186-D
SNOWDEN RIVER BUSINESS PARK
SECTION 1 AREA 1
PARCEL B-1
HOWARD COUNTY, MARYLAND
DEPARTMENT OF PUBLIC WORKS

DEPARTMENT OF PUBLIC WORKS
HOWARD COUNTY, MARYLAND

John R. Ritten 6/24/04
BUREAU OF UTILITIES DATE

DEPARTMENT OF PLANNING AND ZONING
HOWARD COUNTY, MARYLAND

John R. Ritten 6/24/04
CHIEF, DEVELOPMENT ENGINEERING DIVISION DATE

GLW GUTSCHICK LITTLE & WEBER, P.A.
CIVIL ENGINEERS, LAND SURVEYORS, LAND PLANNERS, LANDSCAPE ARCHITECTS
3909 NATIONAL DRIVE - SUITE 250 - BURTONSVILLE OFFICE PARK
BURTONSVILLE, MARYLAND 20886
TEL: 301-421-4024 BAL: 410-880-1820 DC/VA: 301-989-2524 FAX: 301-421-4186



DES: WSJ	
DRN: KIP	
CHK: <i>John R. Ritten</i>	
DATE: 2004	
BY: NO	REVISION
DATE	DATE

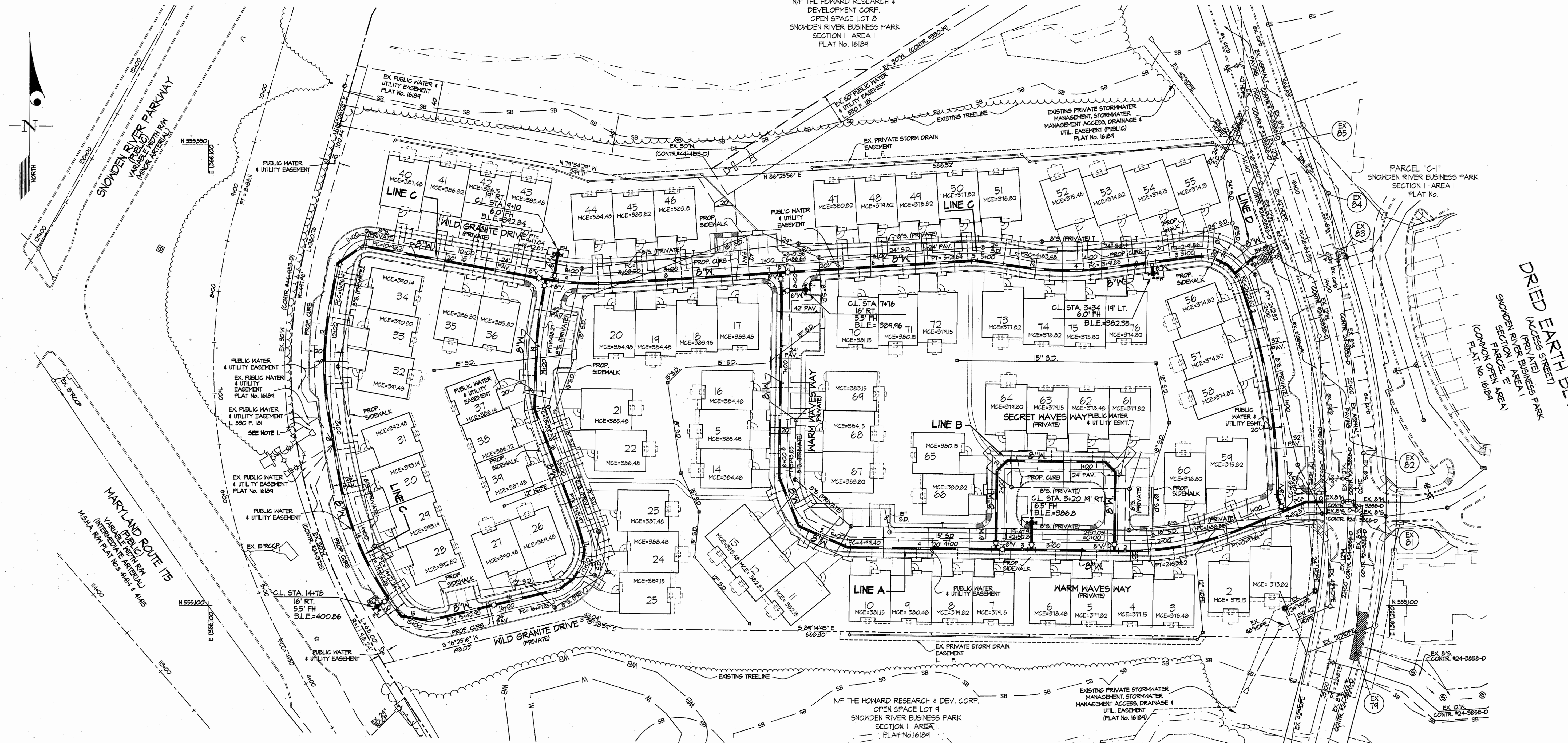
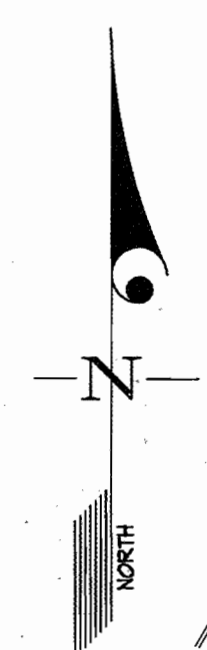
COVER SHEET
SCALE: AS SHOWN

600' SCALE MAP NO. 37
BLOCK NO. 19

SNOWDEN RIVER BUSINESS PARK
SECTION 1 AREA 1
PARCEL B-1
HOWARD COUNTY, MARYLAND
ELECTION DISTRICT No. 6
CONTRACT No. 44-4186-D

SCALE AS SHOWN
SHEET 1 OF 3

GLW FILE #02143
02143WC.dwg



FITTING INFORMATION *

WARM WAVES WAY		
LOCATION	FITTING	COORDINATES
CL STA. 0+48	8' RT.	8' 1/8" HB N 555201 E 1367168
CL STA. 0+70	8' LT.	8' x 8" TEE N 555192 E 1367147
CL STA. 2+40	8' LT.	8' x 8" TEE N 555153 E 1366982
CL STA. 3+20	8' LT.	8' x 8" FHT N 555154 E 1366901
CL STA. 3+55	8' LT.	8' x 8" TEE N 555155 E 1366887
CL STA. 4+91	8' LT.	8' 1/8" HB N 555156 E 1366722
CL STA. 5+47	8' LT.	8' 1/8" HB N 555177 E 1366675
CL STA. 5+44	8' LT.	8' 1/8" HB N 555225 E 1366656
CL STA. 7+75	8' LT.	8' x 8" FHT N 555407 E 1366655

SECRET WAVES WAY		
LOCATION	FITTING	COORDINATES
CL STA. 0+74	2' LT.	8' 1/8" HB N 555230 E 1366983
CL STA. 0+84	8' RT.	8' 1/8" HB N 555240 E 1366973
CL STA. 1+79	8' RT.	8' 1/8" HB N 555241 E 1366878
CL STA. 1+84	8' RT.	8' 1/8" HB N 555231 E 1366868

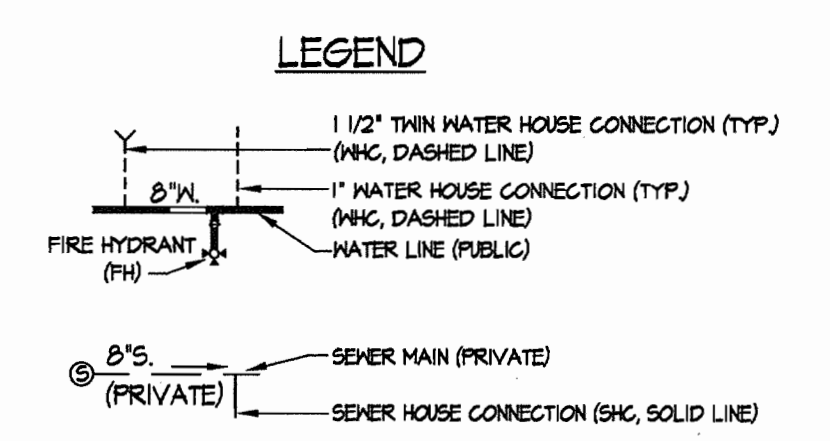
WILD GRANITE DRIVE		
LOCATION	FITTING	COORDINATES
CL STA. 0+10	8' LT.	8' 1/8" HB N 555205 E 1367141
CL STA. 2+33	T LT.	8' 1/8" HB N 555420 E 1367103
CL STA. 2+34	8' LT.	8' x 8" TEE N 555424 E 1367099
CL STA. 2+51	T LT.	8' 1/8" HB N 555432 E 1367092
CL STA. 2+72	T LT.	8' 1/8" HB N 555439 E 1367071
CL STA. 2+88	8' LT.	8' 1/8" HB N 555440 E 1367063
CL STA. 3+34	8' LT.	8' x 8" FHT N 555434 E 1367018
CL STA. 3+71	T LT.	8' 1/8" HB N 555436 E 1366846
CL STA. 6+16	8' LT.	8' x 8" TEE N 555424 E 1366657
CL STA. 9+10	T LT.	8' x 8" FHT N 555417 E 1366436
CL STA. 9+24	8' LT.	8' x 8" TEE N 555418 E 1366428
CL STA. 11+07	8' LT.	8' 1/8" HB N 555451 E 1366250
CL STA. 11+34	8' RT.	8' 1/8" HB N 555434 E 1366226
CL STA. 14+76	2' RT.	8' x 8" FHT N 555106 E 1366216
CL STA. 14+96	8' RT.	8' 1/8" HB N 555089 E 1366288
CL STA. 15+24	4' LT.	8' 1/8" HB N 555085 E 1366315
CL STA. 16+57	T LT.	8' 1/8" HB N 555116 E 1366442
CL STA. 16+77	T LT.	8' 1/8" HB N 555126 E 1366455
CL STA. 16+96	T LT.	8' 1/8" HB N 555140 E 1366464
CL STA. 17+15	T LT.	8' 1/8" HB N 555154 E 1366466
CL STA. 18+61	10' LT.	8' 1/8" HB N 555291 E 1366418

CRIMPING RADIUS INFORMATION

WARM WAVES WAY	
BEGIN 300' CRIMPING RADIUS	END 300' CRIMPING RADIUS
CL STA. 1+11	CL STA. 2+52
CL STA. 7+77	CL STA. 7+83

WILD GRANITE DRIVE	
BEGIN 300' CRIMPING RADIUS	END 300' CRIMPING RADIUS
CL STA. 0+12	CL STA. 2+15
CL STA. 3+16	CL STA. 4+53
CL STA. 8+57	CL STA. 9+28
CL STA. 9+53	CL STA. 9+42
CL STA. 11+84	CL STA. 12+87
CL STA. 13+47	CL STA. 14+84
CL STA. 14+18	CL STA. 14+57

Note 1: Contractor to use extreme caution when mass grading in the vicinity of Line C at Units 28 through 34. Do not disturb the existing cap and buttress for the existing 30" water main (contract number 44-4153-D).



* NOTE: FOR VERTICAL BENDS - SEE PROFILES SHEET 3.

DEPARTMENT OF PUBLIC WORKS
HOWARD COUNTY, MARYLAND

M. Kelly L. Lino 6/14/04
BUREAU UTILITIES DATE

DEPARTMENT OF PLANNING AND ZONING
HOWARD COUNTY, MARYLAND

Chadman 6/20/04
CHIEF, DEVELOPMENT ENGINEERING DIVISION DATE

GLWGUTSCHICK LITTLE & WEBER, P.A.
CIVIL ENGINEERS, LAND SURVEYORS, LAND PLANNERS, LANDSCAPE ARCHITECTS
3909 NATIONAL DRIVE - SUITE 250 - BURTONSVILLE OFFICE PARK
BURTONSVILLE, MARYLAND 20866
TEL: 301-421-4024 BALT: 410-880-1820 GW/VA: 301-989-2524 FAX: 301-421-4186

DES: KIP/MSJ					
DRN: KIP/MSJ					
CHK: <i>[Signature]</i>					
Jms					
DATE: 2004	BY	NO	REVISION	DATE	

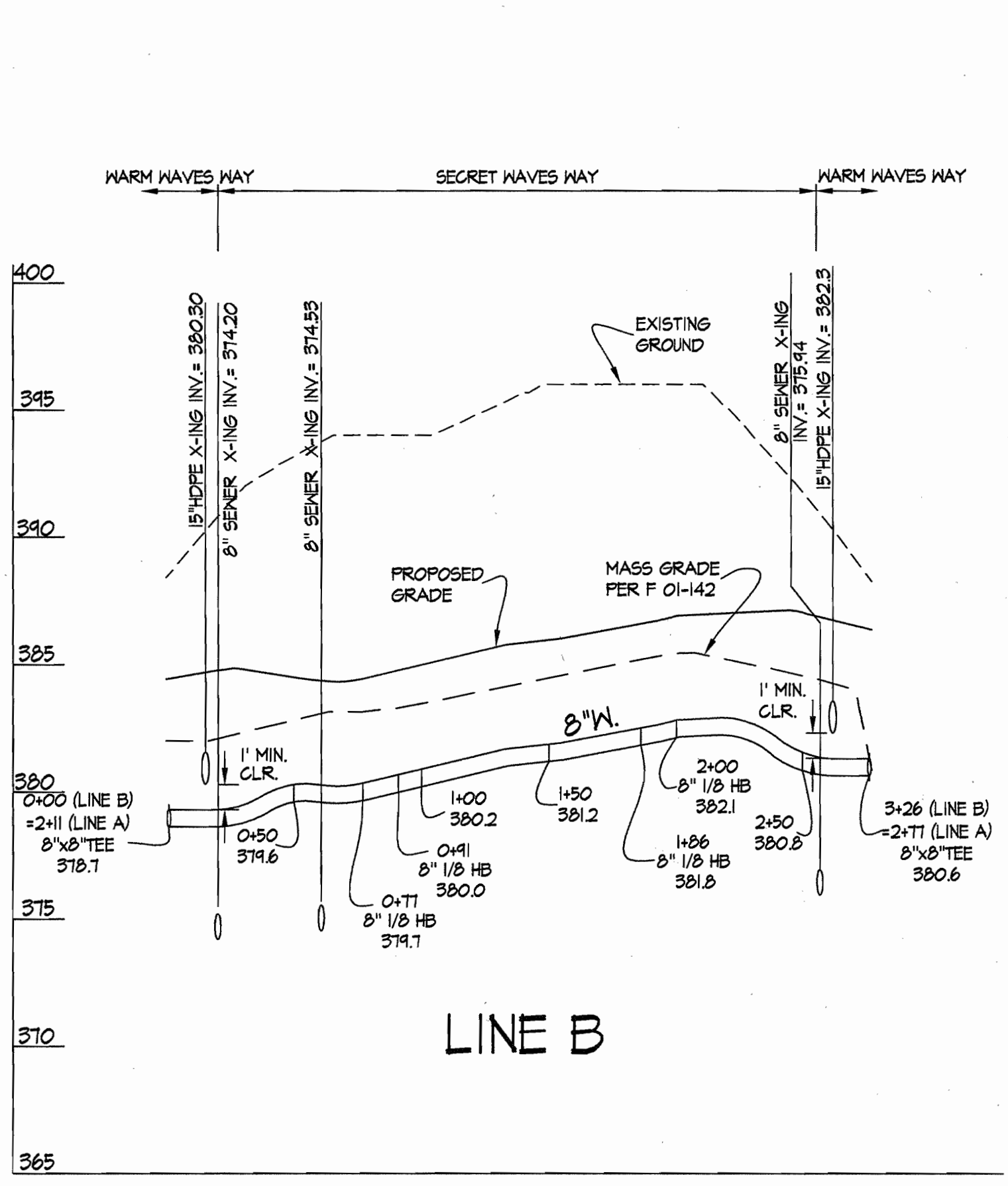
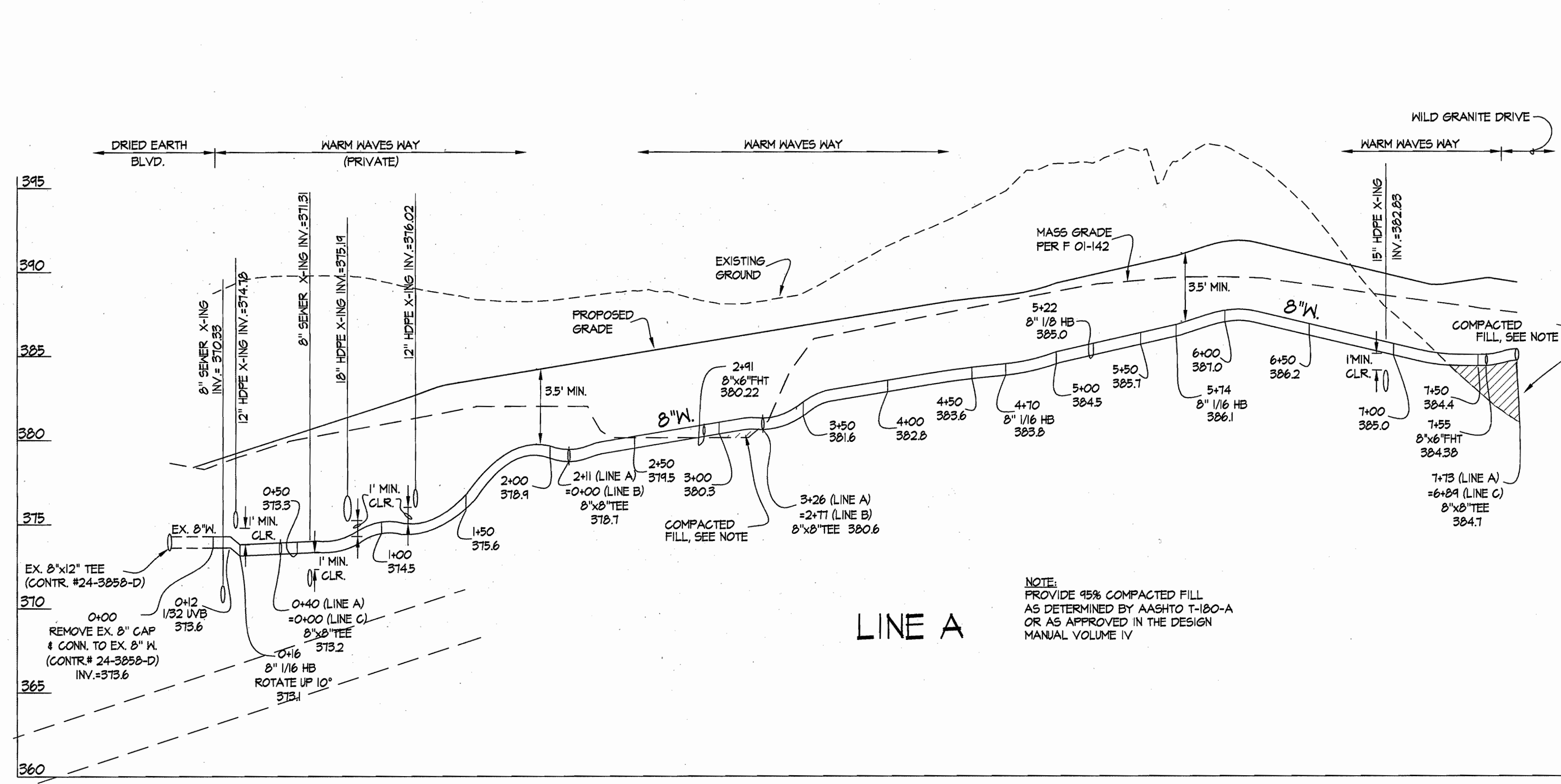
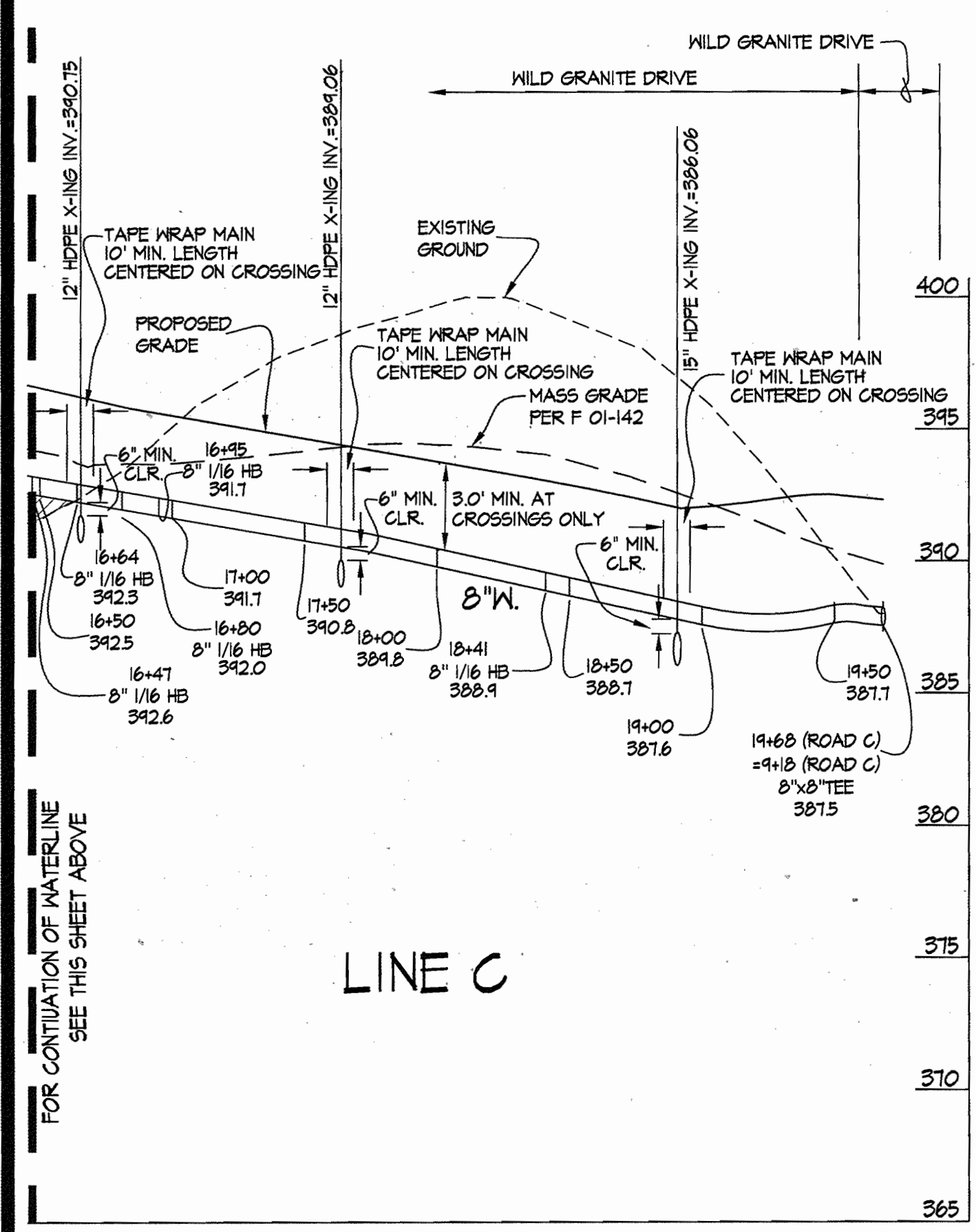
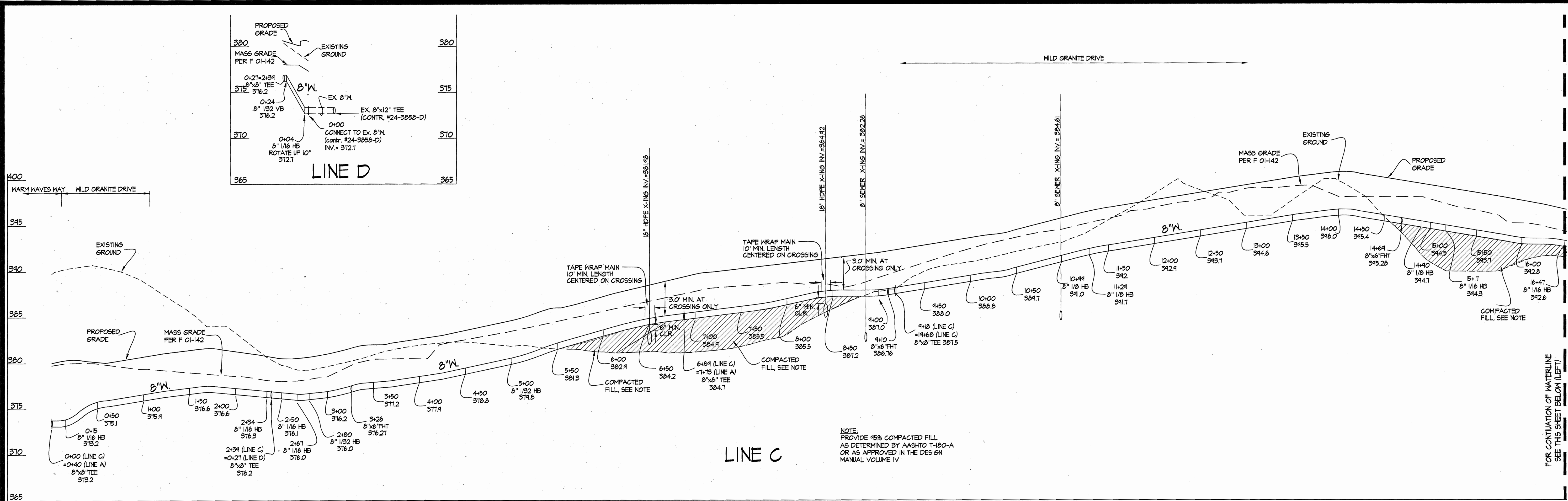
WATER EXTENSION PLAN
SCALE: 1" = 50'

600' SCALE MAP NO. 37 BLOCK NO. 19

SNOWDEN RIVER BUSINESS PARK
SECTION 1 AREA 1
PARCEL B-1
HOWARD COUNTY, MARYLAND
ELECTION DISTRICT No. 6
CONTRACT No. 44-4186-D

SCALE AS SHOWN
SHEET 2 OF 3

GLW FILE #02143
02143W2.dwg



<p>DEPARTMENT OF PUBLIC WORKS HOWARD COUNTY, MARYLAND</p> <p><i>[Signature]</i> BUREAU OF UTILITIES DATE: 6/15/04</p>	<p>DEPARTMENT OF PLANNING AND ZONING HOWARD COUNTY, MARYLAND</p> <p><i>[Signature]</i> CHIEF, DEVELOPMENT ENGINEERING DIVISION DATE:</p>	<p>GLW GUTSCHICK LITTLE & WEBER, P.A. CIVIL ENGINEERS, LAND SURVEYORS, LAND PLANNERS, LANDSCAPE ARCHITECTS 3909 NATIONAL DRIVE - SUITE 250 - BURTNSVILLE OFFICE PARK BURTNSVILLE, MARYLAND 20866 TEL: 301-421-4024 BALT. 410-880-1820 DC/VA. 301-989-2524 FAX: 301-421-4186</p>	<p>DES: MSJ DRN: MSJ CHK: <i>[Signature]</i> DATE: June 2004</p> <p>STATE OF MARYLAND PROFESSIONAL ENGINEER</p>	<p>WATER PROFILES SCALES: 1" = 50' HORIZ. 1" = 5' VERT.</p> <p>600' SCALE MAP NO. 37 BLOCK NO. 19</p>	<p>SNOWDEN RIVER BUSINESS PARK SECTION 1 AREA 1 PARCEL B-1 HOWARD COUNTY, MARYLAND ELECTION DISTRICT No. 6 CONTRACT No. 44-4186-D</p> <p>SCALE AS SHOWN SHEET 3 OF 3</p>
-----------------------------------------------------------------------------------------------------------------------------------	------------------------------------------------------------------------------------------------------------------------------------------------------	------------------------------------------------------------------------------------------------------------------------------------------------------------------------------------------------------------------------------------------------------------------------------------------------------------	---------------------------------------------------------------------------------------------------------------------------------	-------------------------------------------------------------------------------------------------------------------	---------------------------------------------------------------------------------------------------------------------------------------------------------------------------------------------------------