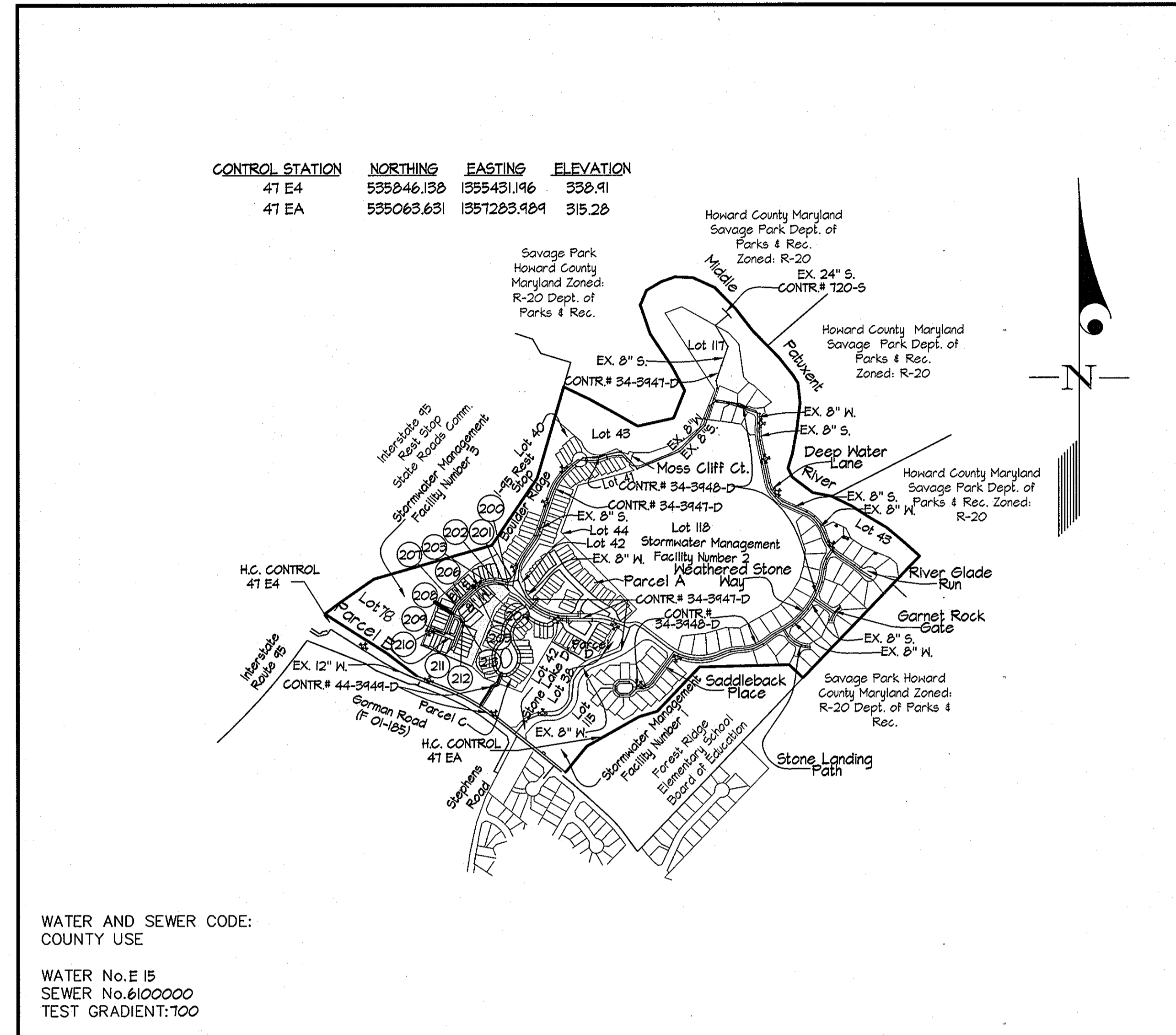


QUANTITIES				
ITEMS	QUANTITIES ESTIMATED	AS-BUILT		
		QUANTITIES	TYPE	MANUFACTURER/SUPPLIER
4" SHC	717 LF	717 LF	SDR 35 PVC	NORTH AMERICAN PIPE
8" SEWER	428 LF	428 LF	SDR 35 PVC	NORTH AMERICAN PIPE
4" MANHOLES	14 EA.	14 EA.	PRECAST CONCRETE	ATLANTIC CONCRETE PRODUCTS, INC.
DROP CONNECTION TYPE B	3 EA.	3 EA.	PVC	GPK PRODUCTS
4" WATER	174 LF	174 LF	CL 52 DUCTILE	U.S. PIPE
4" CAP	2 EA.	2 EA.	DUCTILE	TYLER PIPE
8" WATER	823 LF	823 LF	CL 52 DUCTILE	U.S. PIPE
8" 1/2" HB	2 EA.	2 EA.	DIP	TYLER PIPE
8" 1/6" HB	2 EA.	2 EA.	DIP	TYLER PIPE
8" x 8" T	3 EA.	3 EA.	DIP	TYLER PIPE
8" V	3 EA.	3 EA.	GATE	MUELLER
6" WATER	38 LF	38 LF	CL 52 DUCTILE	U.S. PIPE
1" WHC	1091 LF	1091 LF	TYPE K COPPER	MUELLER
FIRE HYDRANTS	2 EA.	2 EA.	5 1/2" AA23	MUELLER
8" x 6" FHT	2 EA.	2 EA.	DIP	
6" V	2 EA.	2 EA.	GATE	MUELLER
8" x 4" REDUCER	2 EA.	2 EA.	DIP	TYLER PIPE
1 1/2" DRAIN	1 EA.	1 EA.	BRASS	MUELLER
NAME OF UTILITY CONTRACTOR: AMERICAN INFRASTRUCTURE				
SURVEY AND DRAFTING DIV.		CHECKBOX: AS-BUILT DATE:		

TYPE OF BUILDING	TOWNHOUSE
NUMBER OF UNITS	36
NUMBER OF S.H.C.'s	36
NUMBER OF W.H.C.'s	36
DRAINAGE AREA	MIDDLE PATUXENT
TREATMENT PLANT	LITTLE PATUXENT WATER RECLAMATION PLANT



VICINITY MAP
 SCALE: 1"=600'

STONE LAKE
CONTRACT No. 34-4183-D
LOTS B-40 THRU B-73
POLISHED PEBBLE WAY
HOWARD COUNTY, MARYLAND
DEPARTMENT OF PUBLIC WORKS

GENERAL NOTES

- PART I
- Approximate locations of existing mains are shown. The contractor shall take all necessary precautions to protect existing mains and services and maintain uninterrupted supply. Any damage incurred shall be repaired immediately to the satisfaction of the Engineer at the contractor's expense.
 - All horizontal controls are based on Maryland State Coordinates, NAD 83/91.
 - All vertical controls are based on NAVD 88.
 - All pipe elevations shown are invert elevations unless otherwise noted on the plans.
 - Clear all utilities by a minimum of 12". Clear all poles by 5'-0" minimum or tunnel as required unless otherwise noted. The owner has contacted the utility companies and has made arrangements for bracing of poles as shown on the drawings. In the event the contractor's work requires the bracing of additional poles, any cost incurred by the owner for the bracing of additional poles or damages shall be deducted from monies owed the contractor. The contractor shall coordinate with the utility companies to schedule the bracing of the poles.
 - For details not shown on the drawings, and for materials and construction methods use Howard County Design Manual, Volume IV, Standard Specifications and Details for Construction (Latest Edition). The contractor shall have a copy of Volume IV on the job.
 - Where test pits have been made on existing utilities, they are noted by the symbol at the locations of the test pit. A note or notes containing the results of the test pit or pits is included on the drawings. Existing utilities in the vicinity of the proposed work for which test pits have not been dug shall be located by the contractor two weeks in advance of construction operations at his own expense.
 - The contractor shall notify the following utility companies or agencies at least (5) working days before starting work shown on these plans:

AT&T	1-800-252-1133
BGE (Contractor Services)	410-850-4620
BGE (Under Ground Damage Control)	410-787-9068
Bureau of Utilities	410-313-4900
Colonial Pipeline Co.	410-795-1390
Miss Utility	1-800-257-7777
State Highway Administration	410-531-5533
Verizon	1-800-743-0033/410-224-9210
 - Trees and shrubs are to be protected from damage to maximum extent. Trees and shrubs located within the construction strip are not to be removed or damaged by the contractor.
 - The contractor shall remove trees, stumps and roots along line of excavation. Payment for such removal shall be included in the unit price bid for construction of the main.
 - The contractor shall notify the Bureau of Highways, Howard County, at 410-313-2450 at least five (5) working days before any open cutting or boring/jacking of any County road or boring/jacking operation on County roads for laying water/sewer mains or house connections. The approval of these drawings will constitute compliance with DPW requirement per Section 18.114(a) of the Howard County Code.
- PART II - WATER
- All water mains to be D.I.P. Class 52 unless otherwise noted.
 - Tops of all water mains shall have a minimum of 3'-6" cover unless otherwise noted.
 - Valves adjacent to tees shall be strapped to tees.
 - All fittings shall be buttressed or anchored with concrete in accordance with the Standard Details unless otherwise provided for on the drawings.
 - Fire hydrants shall be set to the bury line elevations shown on the drawings. All fire hydrants shall be installed in accordance with Standard Details. Soil around the fire hydrant shall be compacted in accordance with Section 1000 and 1005 of the Standard Specifications.
 - The contractor shall not operate any water main valves on the existing water system.
- PART III - SEWER
- All sewer mains shall be D.I.P. or P.V.C. unless otherwise noted.
 - All manholes shall be 4'-0" inside diameter unless otherwise noted.
 - Force mains shall be D.I.P. only.
 - Manholes shown with 12" and 16" walls are for brick manholes only.
 - Manholes designated W.T. in plan and profile shall have watertight frame and cover, Standard Detail GS.52. Where watertight manhole frames and covers are used, set top of frame 1'-6" above finished grade unless otherwise noted on the drawings.
 - House(s) with the symbol "C.N.S." indicates that the cellar cannot be served.

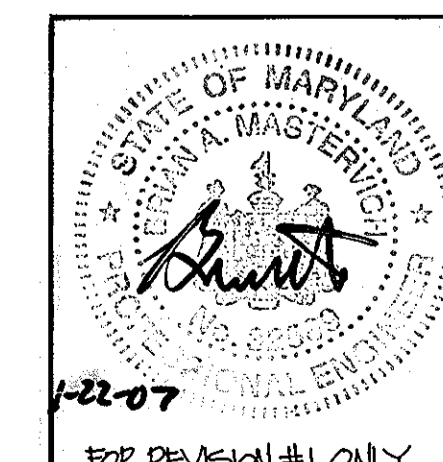
Sediment Control Measures will be implemented in accordance with Section 219 of the Specifications & with Road Drawings Plan F-04-22 ; Drawings for Sediment & Erosion Control.

REVIEWED FOR HOWARD SOIL CONSERVATION DISTRICT AND MEETS TECHNICAL REQUIREMENT. *Jim Meyer* 2/1/07

Jim Meyer 1/13/04
 SIGNATURE DATE
 U.S.D.A. NATURAL RESOURCES CONSERVATION SERVICE

THIS DEVELOPMENT PLAN IS APPROVED FOR SOIL EROSION AND SEDIMENT CONTROL BY THE HOWARD SOIL CONSERVATION DISTRICT.

APPROVED: *John R. Robertson* 2/1/07
John R. Robertson 1/13/04
 HOWARD S.C.D. DATE

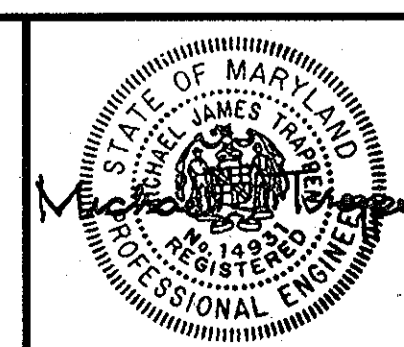


AS BUILTS
 BY: OFI DATE: 4/9/12

DEPARTMENT OF PUBLIC WORKS
 HOWARD COUNTY, MARYLAND
R. A. B... 1-6-04
 CHIEF, BUREAU OF UTILITIES DATE

DEPARTMENT OF PLANNING AND ZONING
 HOWARD COUNTY, MARYLAND
... 4/16/04
 CHIEF, DEVELOPMENT ENGINEERING DIVISION DATE

GLWGUTSCHICK LITTLE & WEBER, P.A.
 CIVIL ENGINEERS, LAND SURVEYORS, LAND PLANNERS, LANDSCAPE ARCHITECTS
 3909 NATIONAL DRIVE - SUITE 250 - BURTONSVILLE OFFICE PARK
 BURTONSVILLE, MARYLAND 20866
 TEL: 301-421-4024 BALT: 410-880-1820 DC/VA: 301-989-2524 FAX: 301-421-4186



DES: Wsj	cc	REVISION	DATE
DRN: Wsj			
CHK: rot			
DATE: JAN. 2004	BY	NO	REVISION

TITLE SHEET
 SCALE: AS SHOWN
 600' SCALE MAP NO. 47 BLOCK NO. 9/10

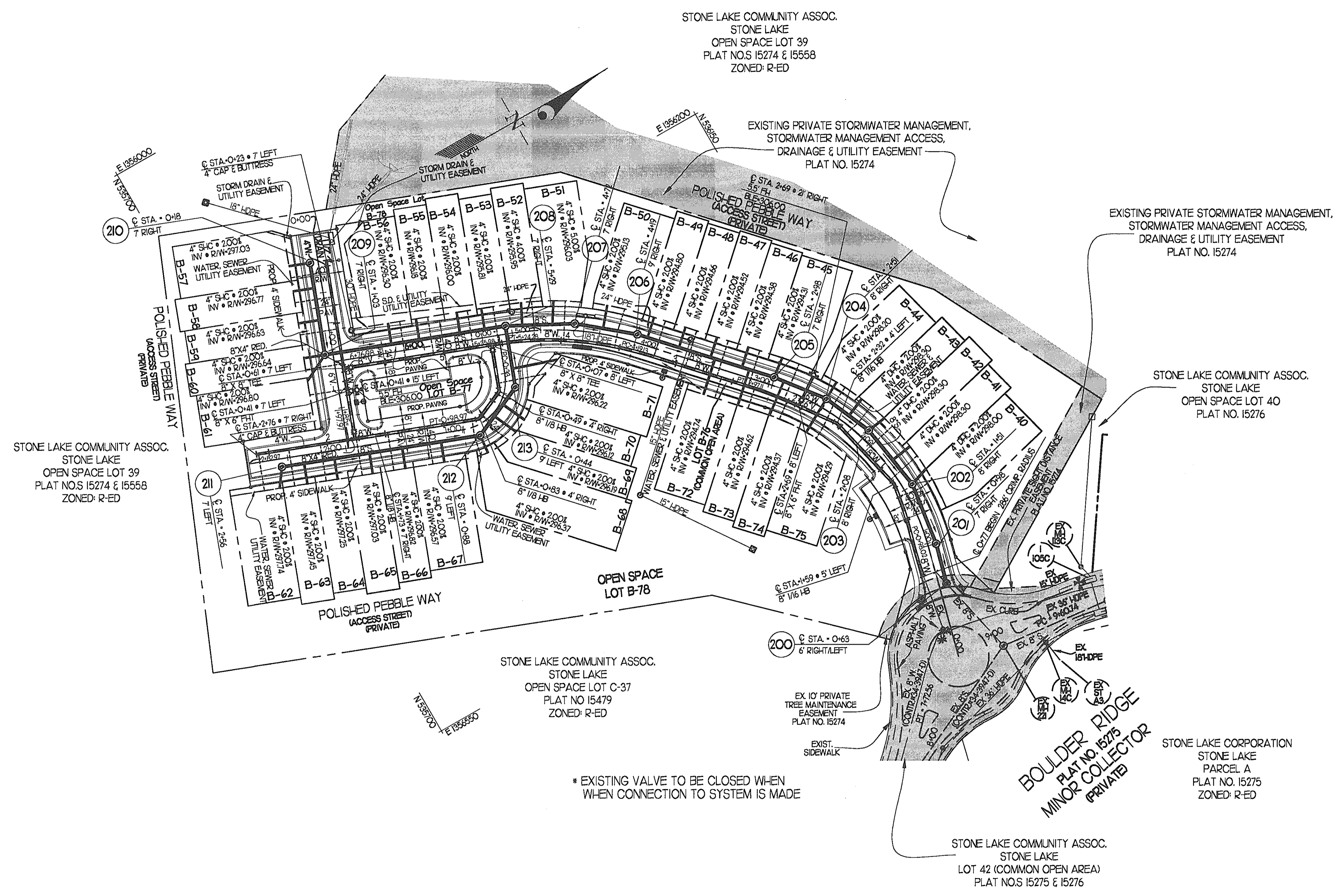
STONE LAKE
 LOTS B-40 THRU B-73
 HOWARD COUNTY, MARYLAND
 ELECTION DISTRICT No. 6
CONTRACT No. 34-4183-D

GLW FILE No. 99140
 SCALE AS SHOWN
 SHEET 1 OF 3

LOT FRONTAGE TABLE	
LOT NO.	DISTANCE (FEET)
B-40	35.94
B-41	28.34
B-42	28.03
B-43	28.17
B-44	33.33
B-45	38.35
B-46	28.00
B-47	28.00
B-48	28.00
B-49	28.00
B-50	43.00
B-51	32.12
B-52	28.07
B-53	28.00
B-54	28.00
B-55	28.00
B-56	50.00
B-57	38.00
B-58	28.00
B-59	28.00
B-60	28.00
B-61	45.00
B-62	45.00
B-63	28.00
B-64	28.00
B-65	28.00
B-66	28.00
B-67	45.00
B-68	16.22
B-69	16.84
B-70	28.70
B-71	47.86
B-72	45.00
B-73	23.00
B-74	28.19
B-75	47.49

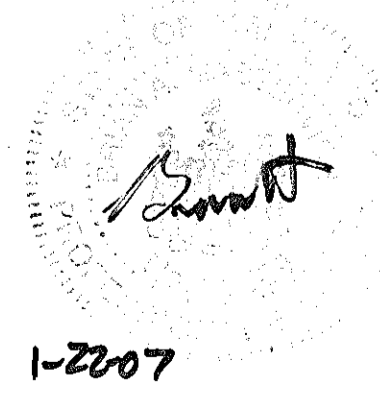
CRIMPING RADIUS TABULATION	
BEGIN CL. STATION	END CL. STATION
1+10	1+47
2+78	3+13
4+03	5+40

MINIMUM CELLAR ELEVATIONS	
LOT NO.	ELEV.
B-40	296.70
B-41	296.72
B-42	297.08
B-43	297.07
B-44	297.19
B-45	297.62
B-46	297.66
B-49	297.80
B-50	297.94
B-51	298.08
B-52	298.41
B-53	299.41
B-54	299.23
B-55	299.06
B-56	299.18
B-57	299.34
B-58	299.42
B-59	300.23
B-60	300.95
B-61	299.81
B-62	299.84
B-63	299.84
B-64	299.57
B-65	300.25
B-66	300.12
B-67	299.97
B-68	299.82
B-69	299.62
B-70	300.07
B-71	299.57
B-72	299.23
B-73	299.50
B-74	297.94
B-75	297.30
B-76	297.59



PLAN
SCALE: 1"=50'

NOTE: LOT 76 (COMMON OPEN AREA) IS
ALSO A WATER, SEWER & UTILITY EASEMENT



AS BUILTS
BY: DFI DATE: 4/9/12

NOTE: THIS PLAN REFERENCES A PREVIOUSLY
APPROVED PLAN DESIGNED BY GUTSHICK LITTLE &
WEBER, P.A. AS CONTRACT 34-4183-D. HOWARD
COUNTY HAS REQUESTED THAT REVISION 1
REQUIRE REPLACEMENT OF PLAN SHTS 2 & 3 OF
THE ORIGINAL CONTRACT 34-4183-D PLAN SET.

DEPARTMENT OF
PUBLIC WORKS
HOWARD COUNTY, MARYLAND
R. J. ... 1-30-07
CHIEF, BUREAU OF UTILITIES DATE

DEPARTMENT OF
PLANNING AND ZONING
HOWARD COUNTY, MARYLAND
... 2/5/07
CHIEF, DEVELOPMENT ENGINEERING DIVISION DATE

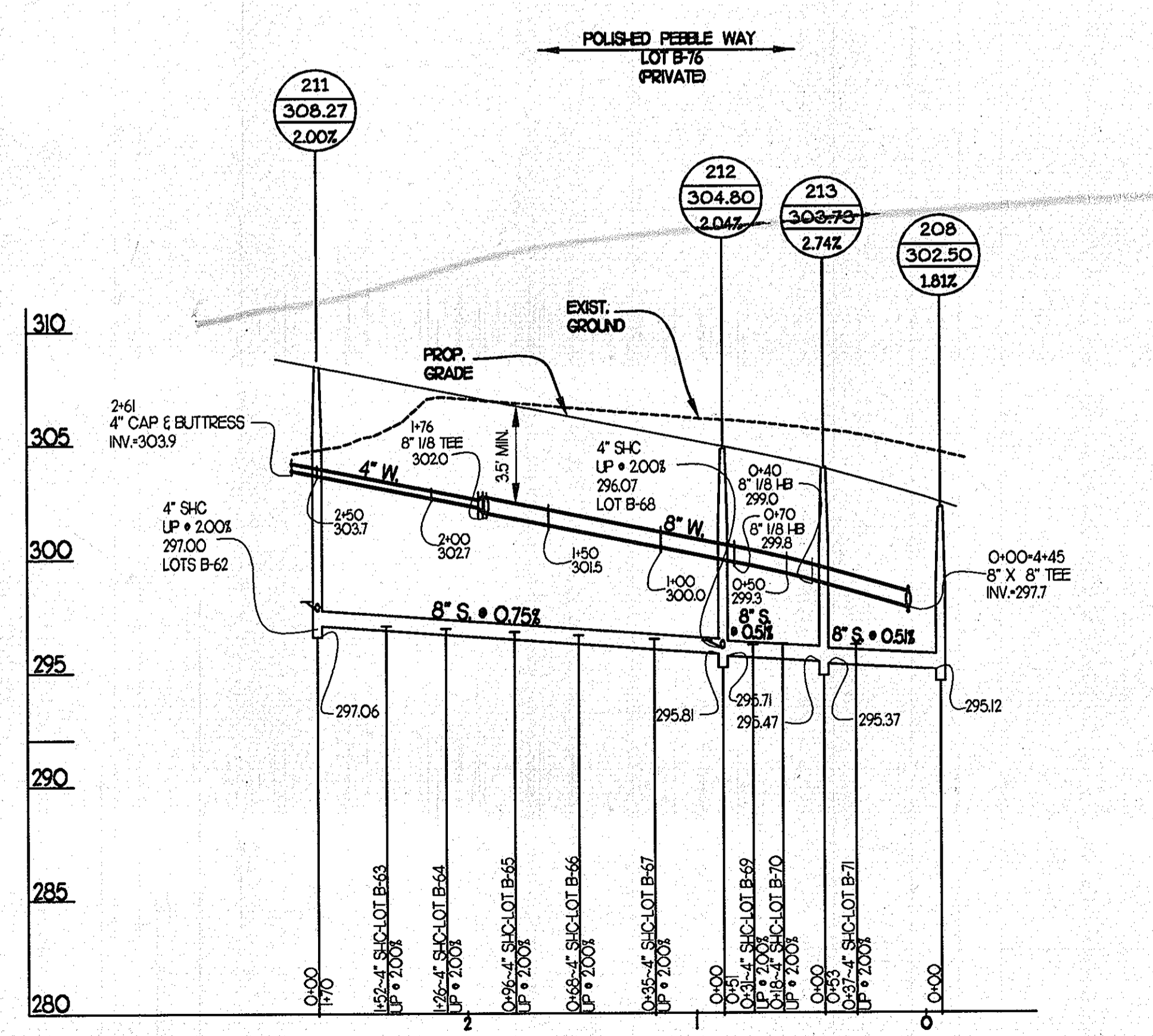
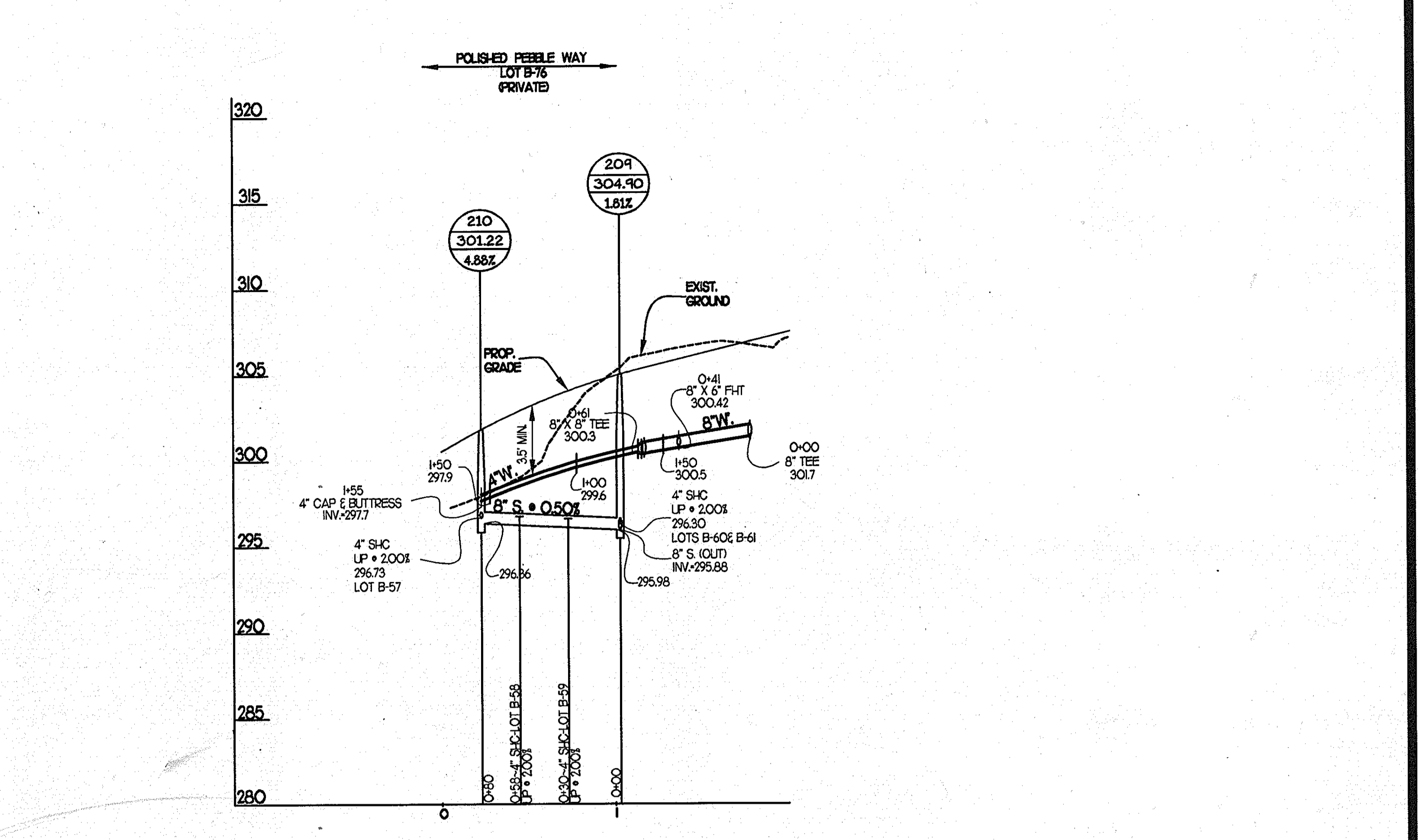
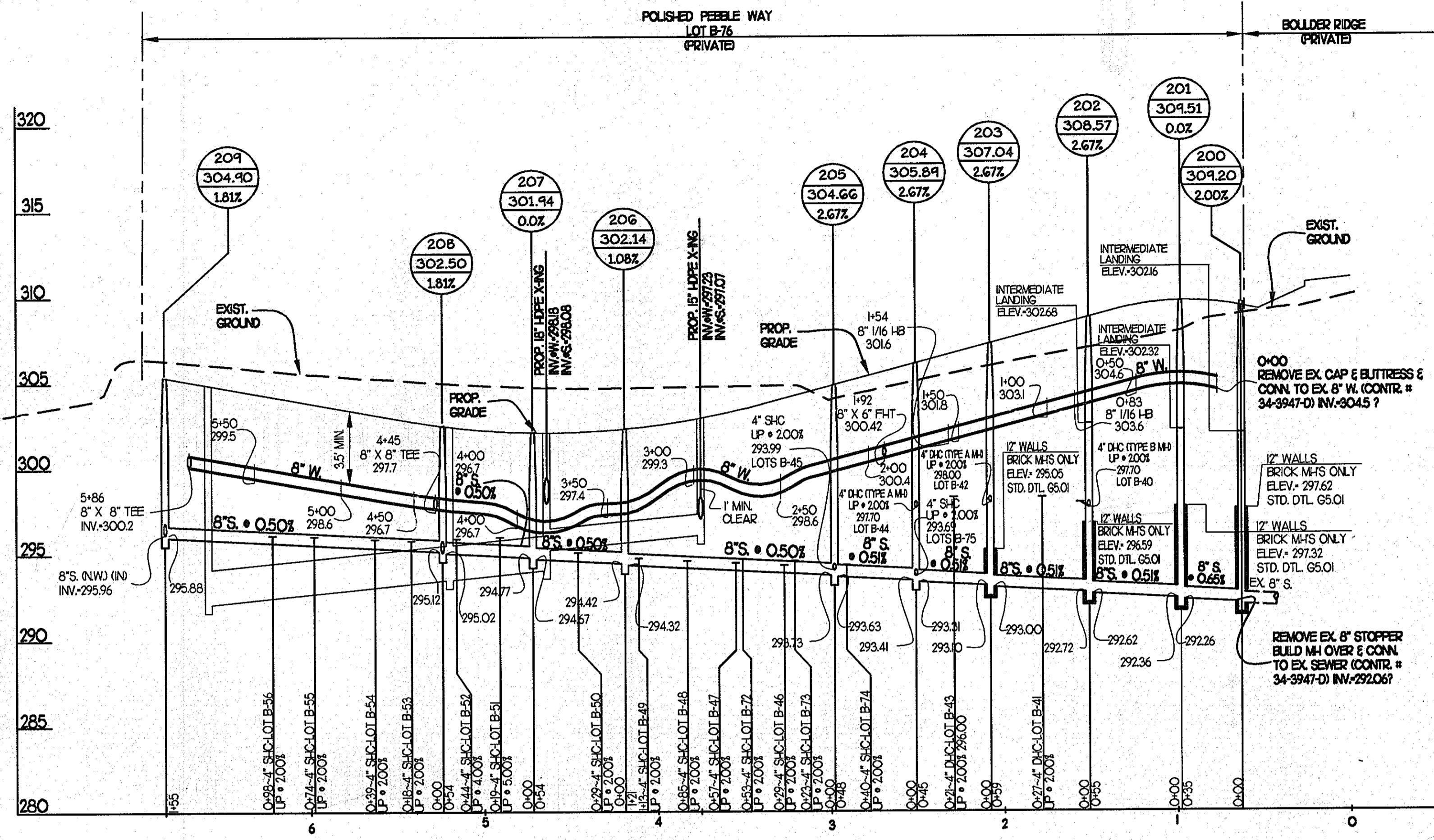
christopher consultants
engineering · surveying · land planning
christopher consultants, ltd.
7172 columbia gateway drive (suite 100) · columbia, md. 21046-2990
410.872.8880 · micro 301.881.0149 · fax 410.872.8888

DES: WSJ	CCL	1	UPDATE LOTS 40-56, 62, 68, 73-75	1/07
DRN: WSJ			PER F-06-232. REVISE SHC INV.'S	
CHK: MJT			@ R/W FOR LOTS 53-56.	
DATE: JAN, 2004	BY	NO	REVISION	DATE

**WATER and SEWER EXTENSION
PLAN**
600' SCALE MAP NO. 47 BLOCK NO. 9/10

STONE LAKE
LOTS 'B-40 THRU B-76
HOWARD COUNTY, MARYLAND
ELECTION DISTRICT No. 6
CONTRACT No. 34-4183-D

SCALE
AS
SHOWN
SHEET
2 OF 3



ASBUILT UTILITY LOCATION CHART

LOCATION	EX W/V	DISTANCE
SMH 200	TO	45.00'
EX SMH 221	TO	76.00'
SMH 201	TO	30.50'
SMH 201	TO	56.00'
SMH 201	TO	67.00'
B-40 SHC	TO	11.00'
SMH 202	TO	28.00'
SMH 202	TO	40.50'
B-41 SHC	TO	16.00'
SMH 202	TO	60.00'
SMH 203	TO	20.50'
SMH 203	TO	79.00'
B-42 SHC	TO	10.00'
SMH 203	TO	46.00'
SMH 203	TO	31.00'
SMH 203	TO	39.00'
B-43 SHC	TO	10.00'
SMH 204	TO	16.00'
SMH 204	TO	39.00'
B-44 SHC	TO	8.00'
SMH 204	TO	23.00'
SMH 204	TO	22.00'
6\"/>		

ASBUILT UTILITY LOCATION CHART

LOCATION	DISTANCE	
SMH 205	TO	17.00'
SMH 205	TO	46.00'
B-45 SHC	TO	14.00'
SMH 205	TO	31.00'
SMH 205	TO	25.00'
B-46 SHC	TO	6.50'
SMH 205	TO	59.00'
SMH 205	TO	51.00'
B-47 SHC	TO	8.50'
SMH 205	TO	120.50'
SD MH 68	TO	10.50'
SD MH 68	TO	8.00'
B-48 SHC	TO	9.00'
SMH 206	TO	18.00'
SMH 206	TO	22.50'
B-49 SHC	TO	9.00'
SMH 206	TO	37.00'
SMH 206	TO	24.00'
B-50 SHC	TO	15.00'
SMH 206	TO	56.00'
SMH 207	TO	24.00'
SMH 207	TO	19.00'
B-51 SHC	TO	9.00'
SMH 207	TO	58.00'
SMH 208	TO	22.00'
SMH 208	TO	29.00'
B-52 SHC	TO	10.00'
SMH 208	TO	27.00'
SMH 208	TO	21.00'
B-53 SHC	TO	9.00'
SMH 208	TO	42.00'
SMH 208	TO	34.00'
B-54 SHC	TO	9.00'
SMH 208	TO	21.00'
8\"/>		

ASBUILT UTILITY LOCATION CHART

LOCATION	DISTANCE	
B-55 SHC	TO	9.00'
SMH 209	TO	56.50'
SMH 209	TO	66.00'
B-56 SHC	TO	10.00'
SMH 209	TO	19.00'
8\"/>		

ASBUILT UTILITY LOCATION CHART

LOCATION	DISTANCE	
B-69 SHC	TO	6.00'
SMH 212	TO	16.50'
B-67 SHC	TO	15.50'
B-68 SHC	TO	7.50'
SMH 212	TO	35.00'
SMH 212	TO	42.50'
B-67 SHC	TO	8.00'
SMH 212	TO	67.50'
SMH 212	TO	77.50'
B-66 SHC	TO	10.00'
B-65 SHC	TO	78.00'
SMH 211	TO	70.00'
B-65 SHC	TO	8.00'
SMH 211	TO	67.00'
8\"/>		

PROFILE SCALES:
VERTICAL: 1" = 5'
HORIZONTAL: 1" = 50'



AS BUILTS
BY: [Signature] DATE: 4/9/12

NOTE: THIS PLAN REFERENCES A PREVIOUSLY APPROVED PLAN DESIGNED BY GUTSCHICK LITTLE & WEBER, P.A. AS CONTRACT 34-4183-D. HOWARD COUNTY HAS REQUESTED THAT REVISION 1 REQUIRE REPLACEMENT OF PLAN SHTS 2 & 3 OF THE ORIGINAL CONTRACT 34-4183-D PLAN SET.

DEPARTMENT OF PUBLIC WORKS HOWARD COUNTY, MARYLAND R. [Signature] CHIEF, BUREAU OF UTILITIES DATE: 1-30-09	DEPARTMENT OF PLANNING AND ZONING HOWARD COUNTY, MARYLAND [Signature] CHIEF, DEVELOPMENT ENGINEERING DIVISION DATE: 2/5/09	christopher consultants engineering · surveying · land planning christopher consultants, inc. 7172 columbia gateway drive (suite 100) - columbia, md 21046-2000 410.872.8850 - fax: 301.611.6148 - fax: 410.872.8823	DES: WsJ DRN: WsJ CHK: DATE: JAN, 2004 BY: NO REVISION:	CCL: 1 UPDATE LOTS 40-56, 62, 68, 73-75 PER F-06-232. REVISE SHC INV.'S @ R/W FOR LOTS 53-56.	I/07 DATE: 6/01 SCALE MAP NO. 47 BLOCK NO. 9/10	STONE LAKE LOTS B-40 THRU B-70 HOWARD COUNTY, MARYLAND ELECTION DISTRICT No. 6 CONTRACT No. 34-4183-D	SCALE AS SHOWN SHEET 3 OF 3
--	--	---	--	--	--	---	--------------------------------