

SHEET INDEX	
1	TITLE SHEET
2	PLAN AND PROFILES OF WATER MAINS

WATER EXTENSIONS

ROUTE 175 COMMERCIAL

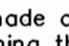
SECTION 1, AREA 2

6th ELECTION DISTRICT

HOWARD COUNTY, MARYLAND

CONTRACT NO. 44-4144-D

GENERAL NOTES

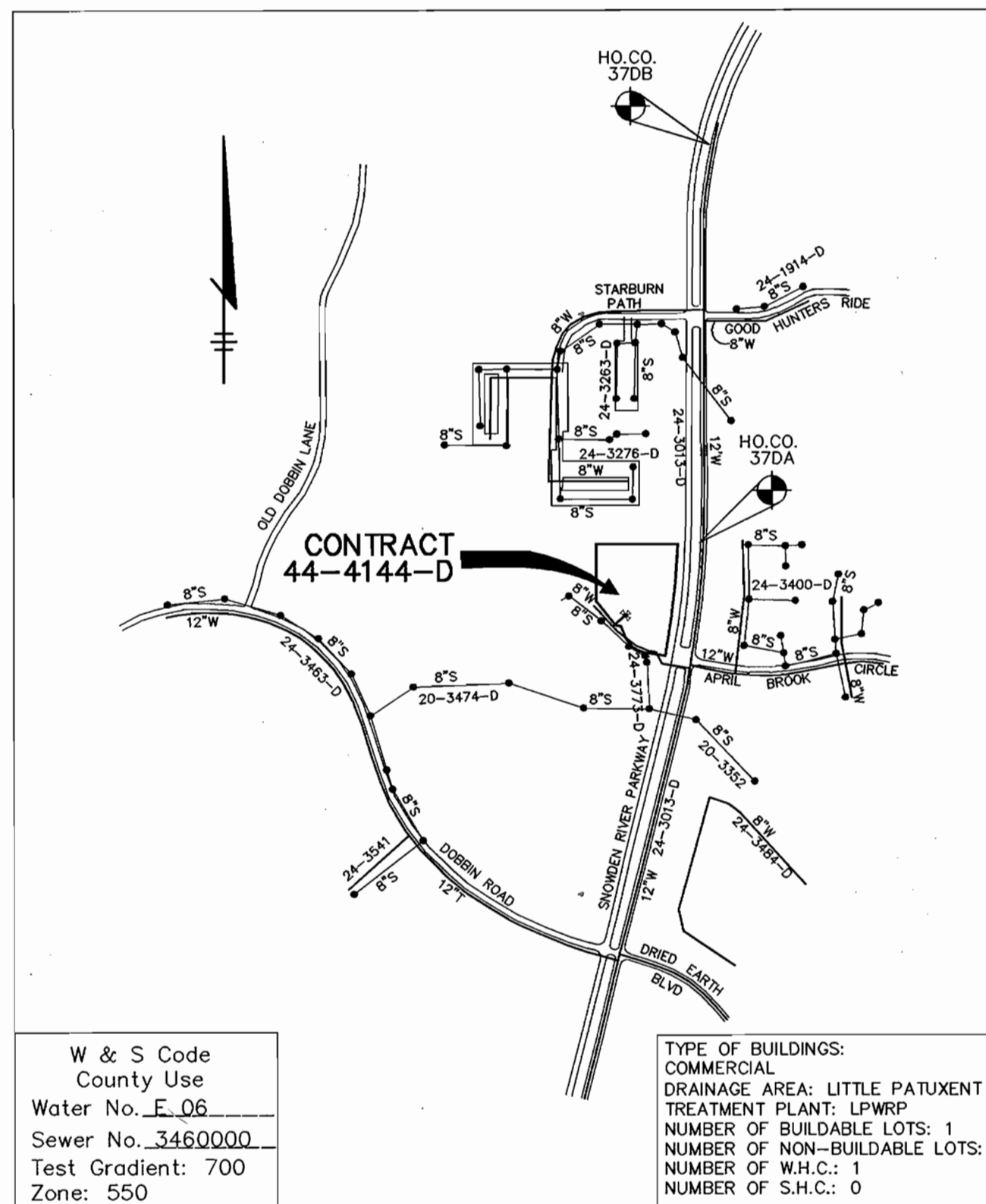
- Approximate location of existing mains are shown. The contractor shall take all necessary precautions to protect existing mains and services and maintain uninterrupted service. Any damage incurred shall be repaired immediately to the satisfaction of the Engineer at the Contractor's expense.
- All horizontal controls are based on Maryland State Coordinates, NAD 83/91 as projected by Howard County Horizontal and Vertical Geodetic Control Station Numbers 37DA and 37DB.
- All vertical controls are based on NAVD 88.
- All pipe elevations shown are invert elevations unless otherwise noted on the plans.
- Clear all utilities by a minimum of 12 inches. Clear all poles by 5'-0" minimum or tunnel as required unless otherwise noted. The owner has contacted the utility companies and has made arrangements for bracing of poles as shown on the drawings. In the event the contractor's work requires the bracing of additional poles, any cost incurred by the owner for the bracing of additional poles or damages shall be deducted from money owed the contractor. The contractor shall coordinate with the utility companies to schedule the bracing of the poles.
- For details not shown on the drawings, and for materials and construction methods, use Howard County Design Manual, Volume IV, Standard Specifications and Detail for Construction (Latest Edition). The contractor shall have a copy of Volume IV on the job.
- Where test pits have been made on existing utilities, they are noted by the symbol  at the location of the test pit. A note or notes containing the results of the test pit or pits is included on the drawings. Existing utilities in the vicinity of the proposed work for which test pits have not been dug shall be located by the contractor two weeks in advance of construction operations at his own expense.
- The contractor shall notify the following utility companies or agencies at least five working days before starting work shown on these plans:

AT&T	1-800-252-1133
BGE (Contractor Services)	410-850-4620
BGE (Underground Damage Control)	410-787-9068
Bureau of Utilities	410-313-4900
Colonial Pipeline Co.	410-793-1390
Miss Utility	1-800-257-7777
State Highway Administration	410-531-5533
Verizon	1-800-743-0033 / 410-224-9210
- Trees and shrubs are to be protected from damage to the maximum extent. Trees and shrubs located within the construction strip are not to be removed or damaged by the contractor.
- The contractor shall remove trees, stumps and roots along the line of excavation. Payment for such removal shall be included in the unit price bid for construction of the main.
- The contractor shall notify the Bureau of Highways, Howard County, at 410-313-7450 at least five working days before open cutting or boring/jacking of any County road for laying water/sewer mains or house connections. The approval of these drawings will constitute compliance with DPW requirements per Section 18.114(a) of the Howard County Code.

BENCH MARK

CONTROL STATION 37DA
ELEVATION 380.475
N 558,667.522
E 1,366,857.438

CONTROL STATION 37DB
ELEVATION 396.189
N 560,307.411
E 1,366,898.128



VICINITY MAP
SCALE : 1"=600'

WATER NOTES

- All water mains shall be D.I.P. Class 52 unless otherwise noted.
- Tops of all water mains shall have a minimum of 3'-6" of cover unless otherwise noted.
- Valves adjacent to tees shall be strapped to tees.
- All fittings shall be buttressed or anchored with concrete in accordance with the Standard Details unless otherwise provided for on the drawings.
- Fire hydrants shall be set to the bury line elevations shown on the drawings. All fire hydrants shall be installed in accordance with Standard Details. The soil around the fire hydrant shall be compacted in accordance with Section 1000 and 1005 of the Standard Specifications.
- The contractor shall not operate any water main valves on the existing water system.
- All water house connections shall be for inside meter setting unless otherwise noted on plans or in specifications.
- For sprinkler systems for all town homes or multi-family dwelling units should have a minimum of 1' connection with a 3/4" meter.

QUANTITIES

ITEMS	QUANTITIES ESTIMATED	AS-BUILT		
		QUANTITIES	TYPE	MANUFACTURER / SUPPLIER
6" WATER	19 LF			
8" WATER	49 LF			
FIRE HYDRANTS	1 EA.			
6" V	2 EA.			
8"x6" T	1 EA.			
8"x6" R	1 EA.			
8" 1/BHB	1 EA.			
8" V	1 EA.			
8"x8" T	1 EA.			
8"CAP AND BUTTRESS	1 EA.			


NAME OF UTILITY CONTRACTOR :	
Sediment control measures for this contract will be implemented in accordance with Section 219 of the Specifications and as shown on SDP-03-137	
CHECKBOX	
AS-BUILT DATE	
SURVEY AND DRAFTING DIVISION	

Review for Howard Soil Conservation District and meets technical requirements.

Jim Meyer 6/20/03
NATURAL RESOURCES CONSERVATION SERVICE DATE

This plan is approved for erosion and sediment control by the Howard Soil Conservation District.

John K. Roberts 6/20/03
HOWARD SOIL CONSERVATION DISTRICT DATE

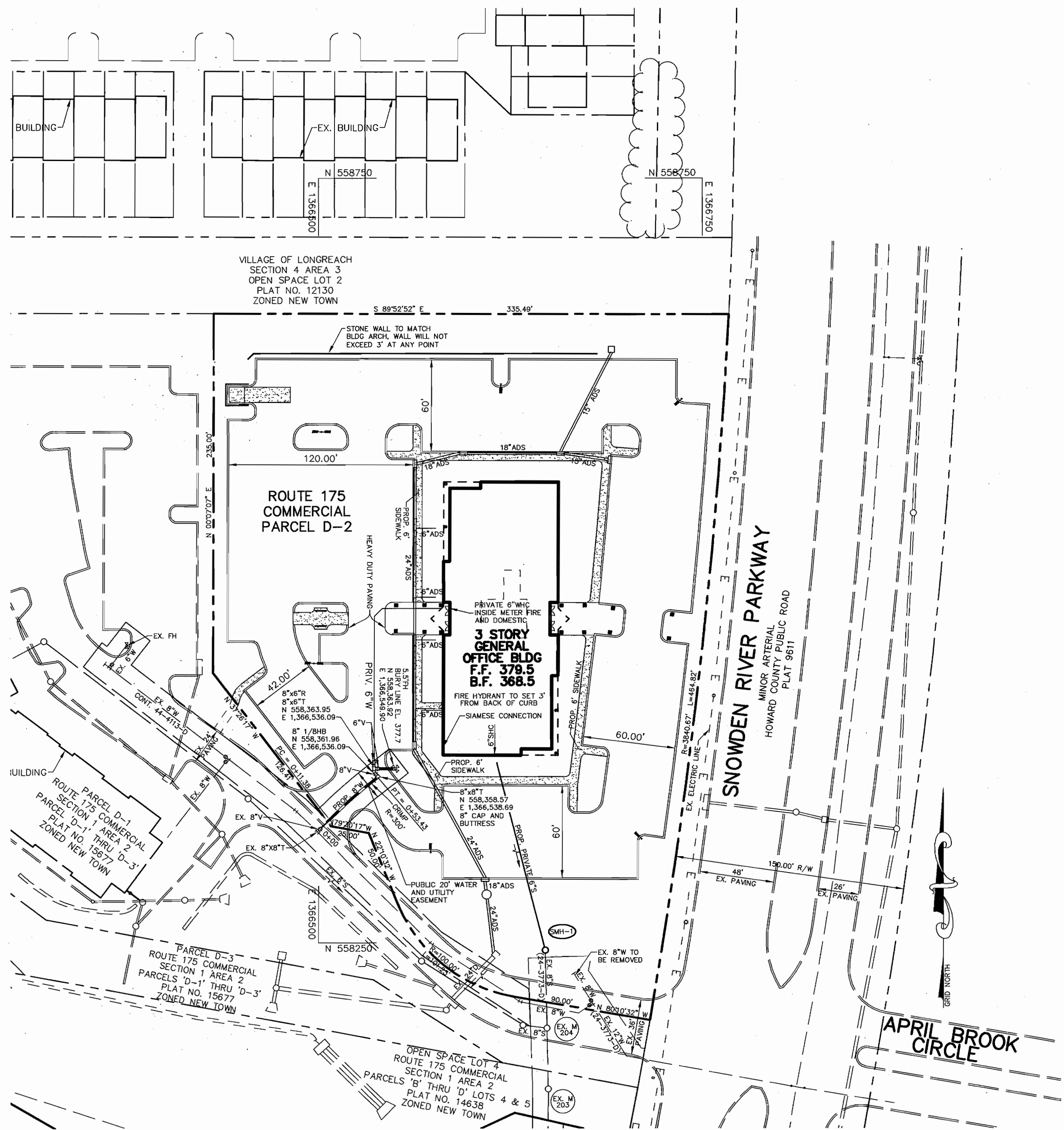
DEPARTMENT OF PUBLIC WORKS HOWARD COUNTY, MARYLAND	DEPARTMENT OF PLANNING & ZONING HOWARD COUNTY, MARYLAND	Patton Harris Rust & Associates, pc Engineers, Surveyors, Planners, Landscape Architects. PHRA 8818 Centre Park Drive Columbia, MD 21045 T 410.997.8900 F 410.997.9282	 CHRISTOPHER J. REID #19949	DES: DAM DRN: DRH CHK: CJR DATE: 6/3/03	BY NO. REVISION DATE
---	--	---	---	--	----------------------

TITLE SHEET

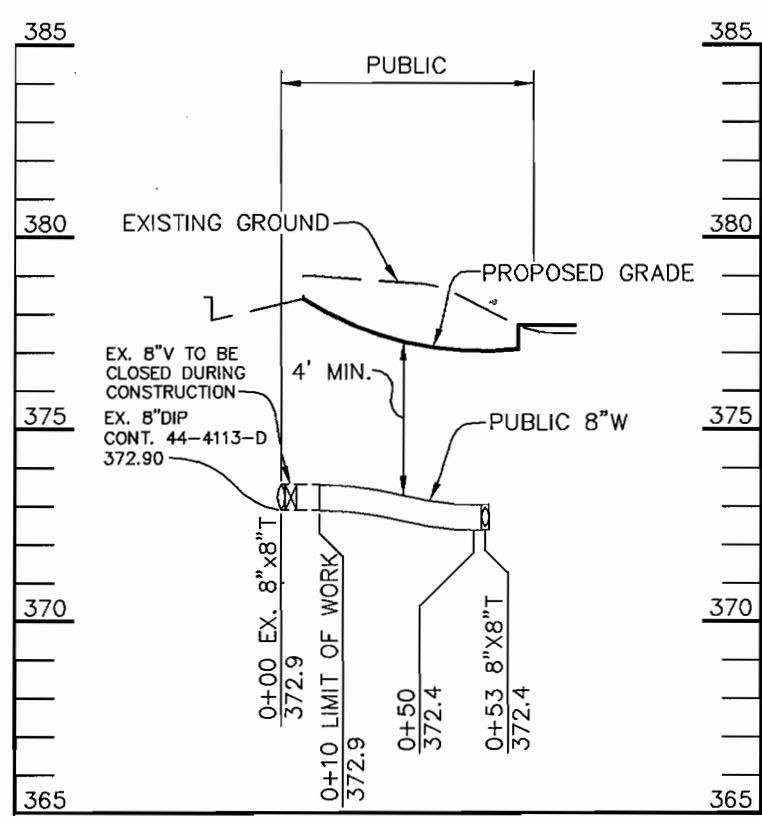
ROUTE 175 COMMERCIAL
SECTION 1, AREA 2, PARCEL D-2
6th ELECTION DISTRICT
HOWARD COUNTY, MARYLAND
CONTRACT NO. 44-4144-D

SCALE AS SHOWN
SHEET 1 OF 2

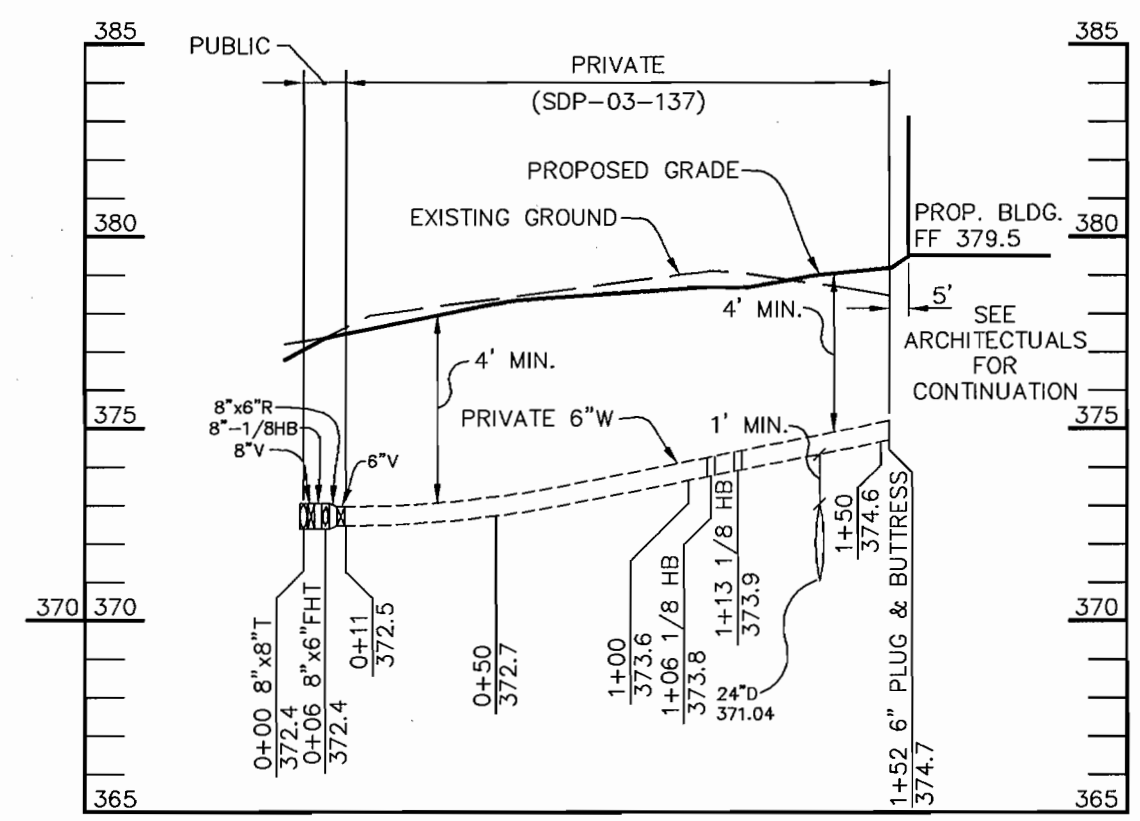
600' SCALE MAP NO. 36 & 37 BLOCK NO. 18 & 13



PLAN
SCALE: 1"=50'



WATER PROFILE
SCALE:
HOR.-1"=50'
VERT.-1"=5'



WATER PROFILE
SCALE:
HOR.-1"=50'
VERT.-1"=5'

ABANDONMENT PROCEDURE:

1. REMOVE EXISTING WATER MAIN AND EX. 8" VALVE.
2. ADD PLUG AND BUTTRESS TO 8"x8" TEE.
3. RETURN VALVE TO HOWARD COUNTY BUREAU OF UTILITIES.

DEPARTMENT OF PUBLIC WORKS HOWARD COUNTY, MARYLAND. <i>Christopher J. Reid</i> CHIEF, BUREAU OF UTILITIES 6-13-03 DATE	DEPARTMENT OF PLANNING & ZONING HOWARD COUNTY, MARYLAND. <i>Christopher J. Reid</i> CHIEF, DEVELOPMENT ENGINEERING DIVISION 6/13/03 DATE	Patton Harris Rust & Associates, pc Engineers, Surveyors, Planners, Landscape Architects. PHRA 8818 Centre Park Drive Columbia, MD 21045 T 410.997.8900 F 410.997.9282		DES: DAM DRN: DRH CHK: CJR DATE: 6/3/03 BY NO. REVISION DATE	PLAN AND PROFILE OF WATER MAINS 600' SCALE MAP NO. 36 & 37 BLOCK NO. 18 & 13	ROUTE 175 COMMERCIAL SECTION 1, AREA 2, PARCEL D-2 6th ELECTION DISTRICT HOWARD COUNTY, MARYLAND CONTRACT NO. 44-4144-D	SCALE AS SHOWN SHEET 2 OF 2
---	---	---	--	--	--	--	---

SHEET INDEX	
1	TITLE SHEET
2	PLAN AND PROFILES OF WATER MAINS

WATER EXTENSIONS

ROUTE 175 COMMERCIAL

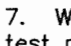
SECTION 1, AREA 2

6th ELECTION DISTRICT

HOWARD COUNTY, MARYLAND

CONTRACT NO. 44-4144-D

GENERAL NOTES

- Approximate location of existing mains are shown. The contractor shall take all necessary precautions to protect existing mains and services and maintain uninterrupted service. Any damage incurred shall be repaired immediately to the satisfaction of the Engineer at the Contractor's expense.
- All horizontal controls are based on Maryland State Coordinates, NAD 83/91 as projected by Howard County Horizontal and Vertical Geodetic Control Station Numbers 37DA and 37DB.
- All vertical controls are based on NAVD 88.
- All pipe elevations shown are invert elevations unless otherwise noted on the plans.
- Clear all utilities by a minimum of 12 inches. Clear all poles by 5'-0" minimum or tunnel as required unless otherwise noted. The owner has contacted the utility companies and has made arrangements for bracing of poles as shown on the drawings. In the event the contractor's work requires the bracing of additional poles, any cost incurred by the owner for the bracing of additional poles or damages shall be deducted from money owed the contractor. The contractor shall coordinate with the utility companies to schedule the bracing of the poles.
- For details not shown on the drawings, and for materials and construction methods, use Howard County Design Manual, Volume IV, Standard Specifications and Detail for Construction (Latest Edition). The contractor shall have a copy of Volume IV on the job.
- Where test pits have been made on existing utilities, they are noted by the symbol  at the location of the test pit. A note or notes containing the results of the test pit or pits is included on the drawings. Existing utilities in the vicinity of the proposed work for which test pits have not been dug shall be located by the contractor two weeks in advance of construction operations at his own expense.
- The contractor shall notify the following utility companies or agencies at least five working days before starting work shown on these plans:

AT&T	1-800-252-1133
BGE (Contractor Services)	410-850-4620
BGE (Underground Damage Control)	410-787-9068
Bureau of Utilities	410-313-4900
Colonial Pipeline Co.	410-795-1390
Miss Utility	1-800-257-7777
State Highway Administration	410-531-5533
Verizon	1-800-743-0033 / 410-224-9210
- Trees and shrubs are to be protected from damage to the maximum extent. Trees and shrubs located within the construction strip are not to be removed or damaged by the contractor.
- The contractor shall remove trees, stumps and roots along the line of excavation. Payment for such removal shall be included in the unit price bid for construction of the main.
- The contractor shall notify the Bureau of Highways, Howard County, at 410-313-7450 at least five working days before open cutting or boring/jacking of any County road for laying water/sewer mains or house connections. The approval of these drawings will constitute compliance with DPW requirements per Section 18.114(a) of the Howard County Code.

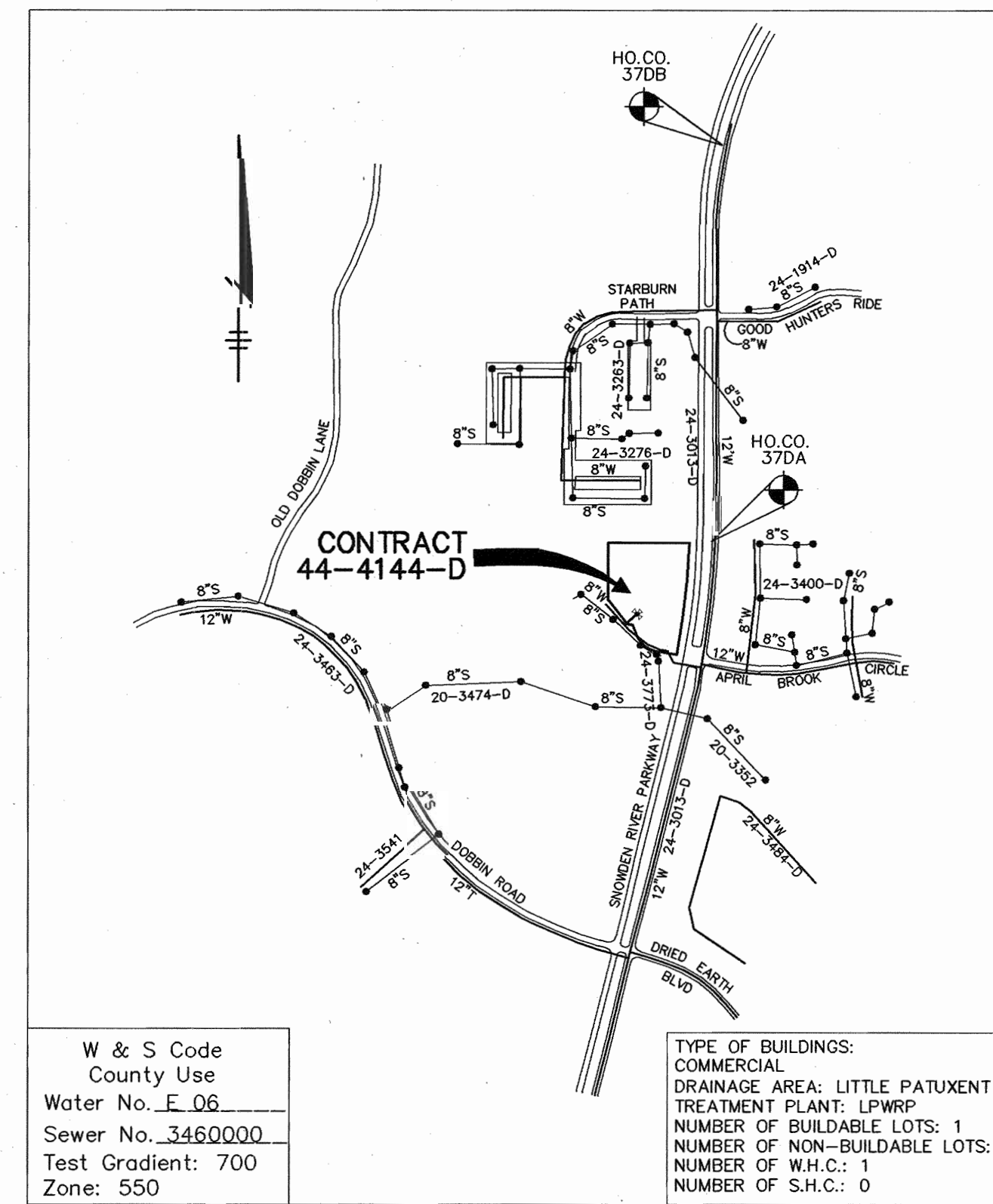
BENCH MARK

CONTROL STATION 37DA
ELEVATION 380.475
N 558,667.522
E 1,366,857.438

CONTROL STATION 37DB
ELEVATION 396.189
N 560,307.411
E 1,366,898.128

QUANTITIES

ITEMS	QUANTITIES ESTIMATED	AS-BUILT		
		QUANTITIES	TYPE	MANUFACTURER / SUPPLIER
6" WATER	19 LF	20 LF	DIP-52	US PIPE
8" WATER	49 LF	49 LF	"	"
FIRE HYDRANTS	1 EA.	1	KENNEDY	HUGHES
6" V	2 EA.	2	KENNEDY	"
8"X6" T	1 EA.	1	TYLER/UNION	"
8"X6" R	1 EA.	1	"	"
8" 1/BHB	1 EA.	1	"	"
8" V	1 EA.	1	KENNEDY	"
8"X8" T	1 EA.	1	TYLER/UNION	"
8"CAP AND BUTTRESS	1 EA.	1	"	"



VICINITY MAP
SCALE: 1"=600'

WATER NOTES

- All water mains shall be D.I.P. Class 52 unless otherwise noted.
- Tops of all water mains shall have a minimum of 3'-6" of cover unless otherwise noted.
- Valves adjacent to tees shall be strapped to tees.
- All fittings shall be buttressed or anchored with concrete in accordance with the Standard Details unless otherwise provided for on the drawings.
- Fire hydrants shall be set to the bury line elevations shown on the drawings. All fire hydrants shall be installed in accordance with Standard Details. The soil around the fire hydrant shall be compacted in accordance with Section 1000 and 1005 of the Standard Specifications.
- The contractor shall not operate any water main valves on the existing water system.
- All water house connections shall be for inside meter setting unless otherwise noted on plans or in specifications.
- For sprinkler systems for all town homes or multi-family dwelling units should have a minimum of 1' connection with a 3/4" meter.

NAME OF UTILITY CONTRACTOR :

Sediment control measures for this contract will be implemented in accordance with Section 219 of the Specifications and as shown on SDP-03-137

CHECKBOX 3-9-04

AS-BUILT DATE

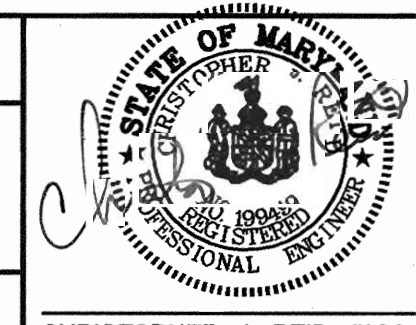
SURVEY AND DRAFTING DIVISION

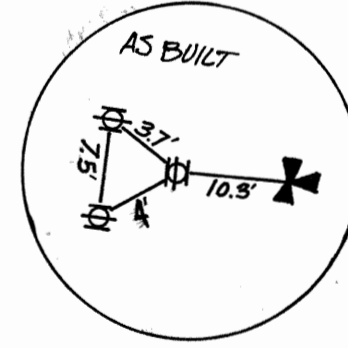
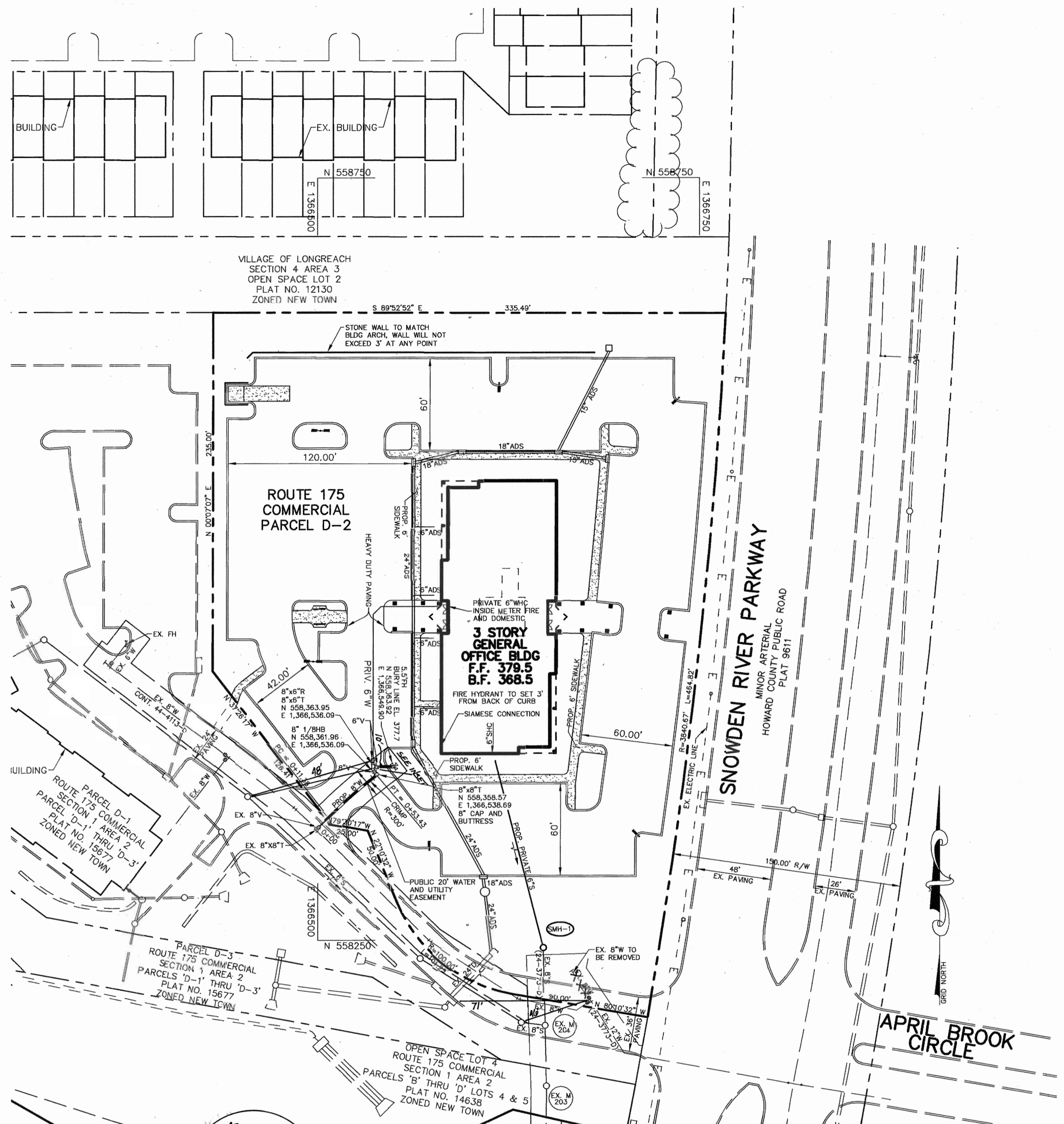
Review for Howard Soil Conservation District and meets technical requirements.

Jim Myers 6/20/03
NATURAL RESOURCES CONSERVATION SERVICE DATE

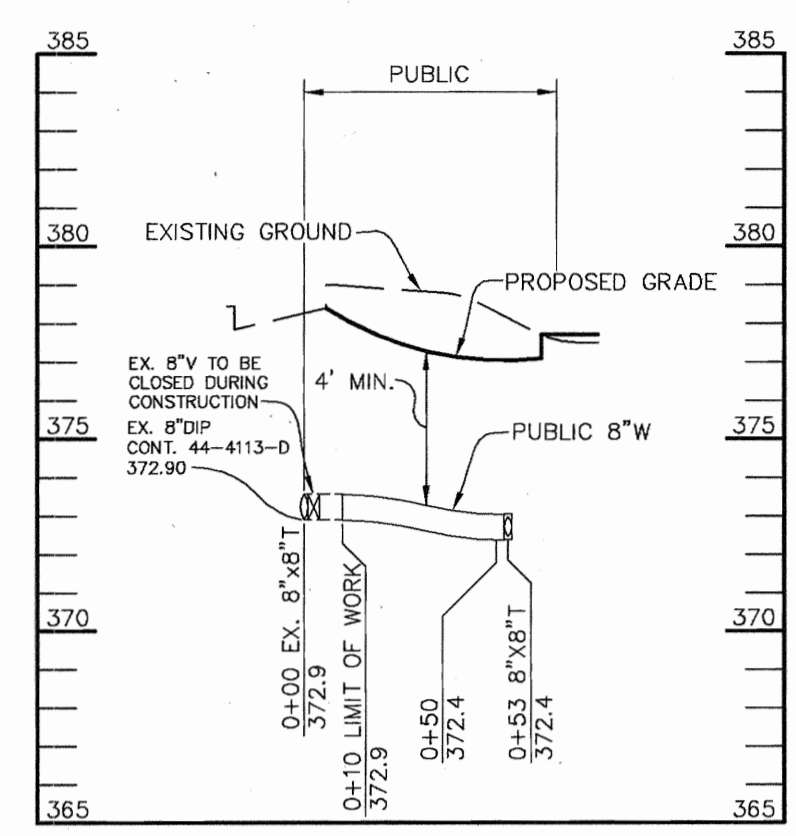
This plan is approved for revision and sediment control by the Howard Soil Conservation District.

John R. Robertson 6/20/03
HOWARD SOIL CONSERVATION DISTRICT DATE

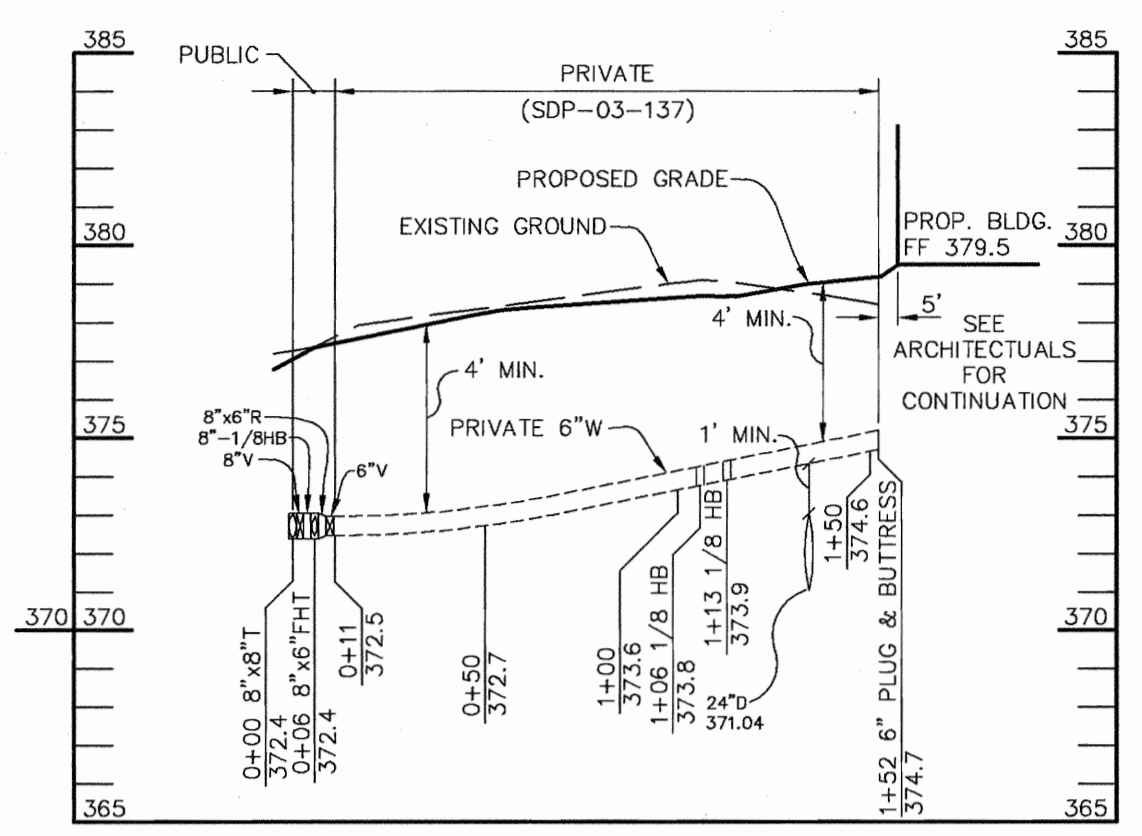
DEPARTMENT OF PUBLIC WORKS HOWARD COUNTY, MARYLAND <i>Robert Bennett</i> 6-13-03 CHIEF, BUREAU OF UTILITIES DATE	DEPARTMENT OF PLANNING & ZONING HOWARD COUNTY, MARYLAND <i>Christopher J. Reid</i> CHIEF, DEVELOPMENT ENGINEERING DIVISION DATE	Patton Harris Rust & Associates, pc Engineers, Surveyors, Planners, Landscape Architects. 8818 Centre Park Drive Columbia, MD 21045 T 410.997.8900 F 410.997.9282  CHRISTOPHER J. REID #19949	DES: DAM DRN: DRH CHK: CJR DATE: 6/3/03 BY: NO. REVISION DATE	TITLE SHEET	ROUTE 175 COMMERCIAL SECTION 1, AREA 2, PARCEL D-2 6th ELECTION DISTRICT HOWARD COUNTY, MARYLAND CONTRACT NO. 44-4144-D SCALE AS SHOWN SHEET 1 OF 2
---	--	--	---	-------------	---



PLAN
SCALE: 1"=50'



WATER PROFILE
SCALE:
HOR.-1"=50'
VERT.-1"=5'



WATER PROFILE
SCALE:
HOR.-1"=50'
VERT.-1"=5'

- ABANDONMENT PROCEDURE:**
1. REMOVE EXISTING WATER MAIN AND EX. 8" VALVE.
 2. ADD PLUG AND BUTTRESS TO 8"x8" TEE.
 3. RETURN VALVE TO HOWARD COUNTY BUREAU OF UTILITIES.

DEPARTMENT OF PUBLIC WORKS HOWARD COUNTY, MARYLAND R. H. B. 6-13-03 CHIEF, BUREAU OF UTILITIES DATE	DEPARTMENT OF PLANNING & ZONING HOWARD COUNTY, MARYLAND [Signature] 6/27/03 CHIEF, DEVELOPMENT ENGINEERING DIVISION DATE	Patton Harris Rust & Associates, pc Engineers, Surveyors, Planners, Landscape Architects. PHRA 8818 Centre Park Drive Columbia, MD 21045 T 410.997.8900 F 410.997.9282	CHRISTOPHER J. REID #19949	DES: DAM DRN: DRH CHK: CJR DATE: 6/3/03 BY NO. REVISION DATE	PLAN AND PROFILE OF WATER MAINS 60' SCALE MAP NO. 36 & 37 BLOCK NO. 18 & 13	ROUTE 175 COMMERCIAL SECTION 1, AREA 2, PARCEL D-2 6th ELECTION DISTRICT HOWARD COUNTY, MARYLAND CONTRACT NO. 44-4144-D SCALE AS SHOWN SHEET 2 OF 2
--	---	--	----------------------------	--	---	---