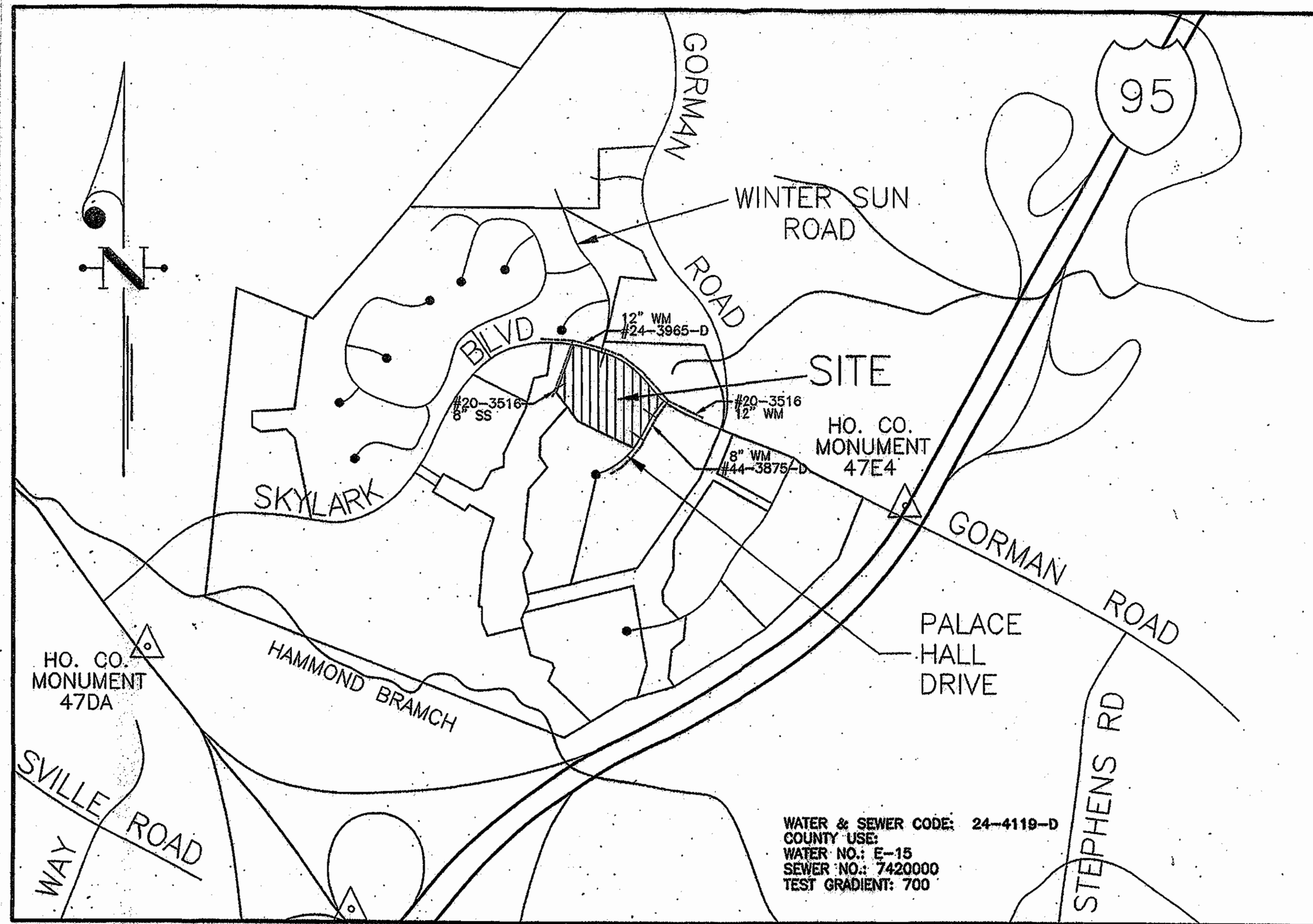


WATER HOUSE CONNECTIONS/AS-BUILT

LOT NO.	WHC	WHC	WHC
153	34' to MH18.	18' to Lot 153 SHC.	6' to Lot 152 SHC.
152	34' to MH18.	17' to Lot 151 SHC.	
151	48' to MH18.	21' to Lot 150 WHC.	
150	66' to MH18.	8.5' to Lot 150 SHC.	21' to Lot 151 WHC.
149	7' to Lot 149 SHC.	53.5' to MH17.	46.5' to MH16.
148	10.5' to Lot 148 SHC.	31.5' to MH16.	
147	47.5' to MH16.	12.5' to Lot 146 SHC.	53' to MH15.
146	39' to MH15.	11' to Lot 146 SHC.	68.5' to MH16.
145	32' to MH15.	67.5' to Hydrant.	88' to MH16.
144	30.5' to MH13.	69.5' to Hydrant.	
143	17.5' to Lot 143 SHC.	16' to Lot 142 WHC.	39.5' to MH13.
142	16' to Lot 143 SHC.	15' to Lot 141 SHC.	21.5' to MH13.
141	13.5' to Lot 141 SHC.	16' to Lot 140 SHC.	18' to MH13.
140	16' to Lot 141 WHC.	13.5' to Lot 140 SHC.	25' to MH13.
139	8' to Lot 139 SHC.	44' to MH11.	
138	9' to Lot 137 SHC.	15' to Lot 138 SHC.	72' to MH11.
137	71' to S.D. MH3.	15.5' to Lot 136 SHC.	8' to Lot 137 SHC.
136	45' to S.D. MH3.	11' to Lot 136 SHC.	
135	28.5' to S.D. MH3.	10.5' to Lot 135 SHC.	18' to Lot 136 WHC.
134	9' to Lot 133 SHC.	14' to Lot 134 SHC.	103' to MH13.
133	95' to MH14.	17.5' to Lot 132 SHC.	8.5' to Lot 132 SHC.
132	68' to MH14.	10.5' to Lot 131 SHC.	11.5' to Lot 132 SHC.
131	47.5' to MH14.	23' to Lot 130 WHC.	12.5' to Lot 131 WHC.
130	23.5' to MH14.	7' to Lot 130 SHC.	23' to Lot 131 WHC.
129	10' to Lot 128 SHC.	15' to MH14.	
128	11' to Lot 127 SHC.	14.5' to Lot 128 SHC.	31.5' to MH14.
127	8' to Lot 126 SHC.	16' to Lot 127 SHC.	19' to MH15.
126	10' to Lot 125 SHC.	15' to Lot 126 SHC.	18' to MH15.
125	18' to Lot 124 WHC.	7.5' to Lot 125 SHC.	31.5' to MH15.
124	12' to Lot 124 SHC.	45.5' to MH16.	47.5' to MH15.
123	16.5' to MH16.	12.5' to Lot 123 SHC.	
122	30.5' to MH16.	59.5' to MH17.	
121	10.5' to Lot 120 SHC.	31.5' to MH17.	57.5' to MH16.
120	15' to MH17.	10' to Lot 120 SHC.	
119	20.5' to MH17.	25.5' to MH17.	
118	16.5' to Lot 117 WHC.	17' to Lot 118 SHC.	28' to MH9.
117	9.5' to Lot 117 SHC.	16.5' to Lot 118 WHC.	29.5' to MH9.
116	7' to Lot 116 SHC.	17' to Lot 117 SHC.	37.5' to MH8.
115	17' to Lot 115 SHC.	29' to MH8.	11.5' to Lot 116 SHC.
114	14' to Lot 113 SHC.	10' to Lot 114 SHC.	80.5' to MH7.
113	16.5' to Lot 112 SHC.	7' to Lot 113 SHC.	61' to MH7.
112	7' to Lot 111 SHC.	16.5' to Lot 112 SHC.	36.5' to MH7.
111	9.5' to Lot 110 SHC.	15.5' to Lot 111 SHC.	33' to MH7.
110	18.5' to Lot 109 WHC.	8' to Lot 110 SHC.	41' to MH7.
109	14' to Lot 109 SHC.	55' to MH7.	18.5' to Lot 110 WHC.
108	9.5' to Hydrant.	12' to Lot 108 SHC.	61' to MH6.
107	16' to Lot 106 SHC.	10' to Lot 107 SHC.	38' to MH6.
106	9' to Lot 106 SHC.	10.5' to Lot 105 WHC.	33.5' to MH6.
105	10.5' to Lot 106 WHC.	7' to Lot 105 SHC.	40' to MH6.
104	6' to Lot 104 SHC.	14' to Lot 103 SHC.	31' to MH5.
103	9' to Lot 103 SHC.	13' to Lot 102 WHC.	
102	13' to Lot 103 WHC.	9' to Lot 102 SHC.	45' to MH5.
101	46' to MH4.	58' to Lot 91 WHC.	
100	15' to Lot 99 SHC.	5' to Lot 100 SHC.	82' to MH4.
99	46.5' to Lot 99 WHC.	13' to Lot 98 WHC.	7.5' to Lot 99 SHC.
98	7.5' to Lot 98 SHC.	13' to Lot 99 WHC.	
97	45.5' to Lot 95 WHC.	20' to Lot 98 SHC.	
96	44.5' to Hydrant.	6.5' to Lot 96 SHC.	
95	18' to Lot 94 WHC.	7.5' to Lot 95 SHC.	45.5' to Lot 97 WHC.
94	6' to Lot 94 SHC.	15' to Lot 95 WHC.	
93	14' to Lot 92 WHC.	8.5' to Lot 93 SHC.	46.5' to Lot 99 WHC.
92	7' to Lot 92 SHC.	14' to Lot 93 WHC.	
91	15' to Lot 92 SHC.	86' to MH4.	58' to Lot 101 WHC.
90	35.5' to Lot 89 SHC.	25' to Lot 90 SHC.	55.5' to MH4.
89	14.5' to Lot 88 WHC.	30.5' to MH4.	19' to Lot 89 SHC.
88	7' to Lot 88 SHC.	20' to MH4.	14.5' to Lot 89 WHC.
87	10' to Lot 86 SHC.	10' to Lot 87 SHC.	28.5' to MH4.
86	15' to Lot 85 SHC.	44.5' to MH4A.	12' to Lot 86 SHC.
85	21' to Lot 84 SHC.	39' to MH4A.	10' to Lot 85 SHC.
84	32' to Lot 83 SHC.	64.5' to MH5.	5.5' to Lot 84 SHC.
83	19' to Lot 82 SHC.	5' to Lot 83 SHC.	29.5' to MH5.
82	19' to Lot 81 SHC.	6' to Lot 82 SHC.	13.5' to MH5.
81	17' to Lot 80 SHC.	7.5' to Lot 81 SHC.	27' to MH5.
80	10' to Lot 79 WHC.	8' to Lot 80 SHC.	40' to MH6.
79	9' to Lot 79 SHC.	10' to Lot 80 WHC.	32' to MH6.
78	18' to Lot 77 SHC.	8' to Lot 78 SHC.	21.5' to MH6.
77	17' to Lot 76 SHC.	6' to Lot 77 SHC.	34.5' to MH6.
76	8' to Lot 76 SHC.	16.5' to Lot 75 SHC.	56.5' to MH6.
75	8' to Lot 75 SHC.	14.5' to Lot 74 SHC.	48' to Hydrant.
74	9' to Lot 74 SHC.	16' to Lot 73 SHC.	60.5' to Hydrant.
73	7' to Lot 73 SHC.	29' to Lot 72 SHC.	
72	18.5' to Lot 72 SHC.	19' to Lot 71 WHC.	31.5' to MH7.
71	18' to Lot 72 WHC.	8' to Lot 71 SHC.	16' to MH7.
70	8' to Lot 70 SHC.	17.5' to Lot 69 SHC.	27' to MH7.
69	10' to Lot 69 SHC.	52' to MH7.	
68	62' to MH10.	35' to MH8.	
67	44.5' to MH10.	53' to MH8.	
66	19' to MH10.	11.5' to Lot 65 WHC.	81.5' to MH8.
65	13.5' to MH10.	11.5' to Lot 66 WHC.	92.5' to MH8.

EMERSON / 24-4119-D

EMERSON / 24-4119-D



LOCATION MAP  
SCALE: 1" = 600'

TYPE OF BUILDING	TOWNHOMES
NO. OF LOTS/PARCELS	89
NO. OF WATER HOUSE CONNECTIONS	89
NO. OF SEWER HOUSE CONNECTIONS	89
DRAINAGE AREA	LITTLE PATUXENT
TREATMENT PLANT	LITTLE PATUXENT WATER RECLAMATION PLANT SAVAGE HOWARD COUNTY

BENCH MARKS

HOWARD COUNTY MONUMENT #47DA	ELEV. 315.905
N 535405.459	E 1349362.707
HOWARD COUNTY MONUMENT #47G2	ELEV. 364.210
N 532938.964	E 1351224.095
HOWARD COUNTY MONUMENT #47E2	ELEV. 338.910
N 535846.137	E 1355431.196

WATER & SEWER CONSTRUCTION PLANS  
EMERSON, SECTION 2, PHASE 2  
A RESUBDIVISION OF PARCELS  
C-1 AND C-2 (LOTS 1-89)  
6TH ELECTION DISTRICT HOWARD COUNTY, MARYLAND  
CONTRACT No. 24-4119-D

AS BUILT

DATE: 7-26-04/2-2-00

GENERAL NOTES

PART I - GENERAL

- Approximate location of existing mains are shown. The contractor shall take all necessary precautions to protect existing mains and services and maintain uninterrupted supply. Any damage incurred shall be repaired immediately to the satisfaction of the Engineer at the Contractor's expense.
- All horizontal controls are based on Maryland State Coordinates. [North American Datum of 1983 (NAD '83)].
- All vertical controls are based on U.S.G.S. data.
- All pipe elevations shown are invert elevations.
- Clear all utilities by a minimum of 12". Clear all poles by 2'-0" minimum or tunnel as required. The owner has contacted the utility companies and has made arrangements for bracing of poles as shown on the drawings. In the event that the contractor's work requires the bracing of additional poles, any cost incurred by the owner for bracing of additional poles or damages shall be deducted from money owed the contractor. The contractor shall coordinate with the utility companies to schedule the bracing of the poles.
- For details not shown on the drawings, and for materials and construction methods, use Howard County Standard Specifications and Details for Construction (Latest Edition). The contractor shall have a copy of Volume IV on the job.
- Where test pits have been made on existing utilities, they are noted by the symbol at the location of the test pit. A note or notes containing the results of the test pit or pits is included on the drawings. Existing utilities in the vicinity of the proposed work for which test pits have not been dug shall be located by the contractor two weeks in advance of construction operations at his own expense.
- Contractor shall notify the following utility companies or agencies at least five working days before starting work shown on these plans:
 

Slate Highway Administration	410-531-5533
BG&E Co. Contractor Services	410-850-4620
BG&E Co. Under Ground Damage Control	410-291-4607
Miss Utility	1-800-257-7777
Colonial Pipeline Co.	410-549-4120
Howard County Department of Public Works	
Bureau of Utilities	410-313-4900
Bell Atlantic	1-800-446-5266
- Trees and shrubs are to be protected from damage to maximum extent. Trees and shrubs located within the construction strip are not to be removed or damaged by the contractor.
- Contractor shall remove trees, stumps and roots along line of excavation. Payment for such removal shall be included in the unit price bid for construction of the main.
- The contractor shall notify the Bureau of Highways, Howard County, at (410) 313-2450 at least five working days before any open cut of any County road or boring/jacking operation in County roads for laying water/sewer mains or house connections. The approval of these drawings will constitute compliance with DPW requirements per Section 18.114(a) of the Howard County Code.

PART II - WATER

- All water mains to be D.I.P. Class 52 unless otherwise noted.
- Tops of all water mains to have a minimum of 3'-1/2' cover unless otherwise noted.
- Valves adjacent to tees shall be strapped to tees.
- All fittings shall be buttressed or anchored with concrete in accordance with the Standard Details unless otherwise provided for on the drawings.
- Fire hydrants shall be set to the bury line elevations shown on the drawings. All fire hydrants shall be restrained and buttressed with concrete in accordance with Standard Details. Soil around the fire hydrant shall be compacted in accordance with Sections 1003 and 1005 of the Standard Specifications.
- The contractor shall not operate any water main valves on the existing water system.
- All water house connections shall be for inside meter setting unless otherwise noted on plans or in specifications.
- Sprinkler systems for all townhomes shall have a minimum of 1" connection with a 3/4" meter.

PART III - SEWER

- All sewer mains shall be DIP or P.V.C. unless otherwise noted.
- All manholes shall be 4'-0" inside diameter unless otherwise noted.
- Manholes shown with 12" and 16" walls are for brick manholes only.
- Manholes designated W.T. in plan and profile shall have watertight frame and covers, Standard Detail G5.52. Where watertight manhole frame and cover is used, set top of frame 1" - 6" above finished grade unless otherwise noted on the drawings.

NOTE: WHC ball valves and SHC cleanouts shall be set 3' from the edge of the sidewalk.

SEDIMENT CONTROL MEASURES WILL BE IMPLEMENTED IN ACCORDANCE WITH SECTION 219 OF THE SPECIFICATIONS AND WITH ROAD CONSTRUCTION PLAN, F-03-172. DRAWINGS 10 AND 11, SEDIMENT AND EROSION CONTROL.

REVIEWED FOR HOWARD SOIL CONSERVATION DISTRICT AND MEETS TECHNICAL REQUIREMENTS.

*Jim Myers* 9/10/03  
SIGNATURE DATE

U. S. SOIL CONSERVATION SERVICE

THIS DEVELOPMENT PLAN IS APPROVED FOR SOIL EROSION AND SEDIMENT CONTROL BY THE HOWARD SOIL CONSERVATION DISTRICT.

APPROVED:  
*John R. Robertson* 9/10/03  
HOWARD S. C. D. DATE

DEPARTMENT OF PUBLIC WORKS  
HOWARD COUNTY, MARYLAND

DEPARTMENT OF PLANNING & ZONING  
HOWARD COUNTY, MARYLAND

CLARK • FINEFROCK & SACKETT, INC.  
ENGINEERS • PLANNERS • SURVEYORS  
7135 MINSTREL WAY COLUMBIA, MD 21045  
(410) 381-7500 BALT. (301) 621-8100 WASH.



DES: JBS			
DRN: LA/AS			
CHK: AS/CCM			
DATE: 3-12-03	CM: 2	Rev. Twin WHC's to Single Connections: Rev FHS 4/1/20	3-23-04
BY: NO.		REVISION	DATE

TITLE SHEET

EMERSON, SECTION 2, PHASE 2  
LOTS 65 THRU 153 AND  
OPEN SPACE LOTS 154 THRU 156  
A RESUBDIVISION OF PARCELS C-1 AND C-2  
6TH ELECTION DISTRICT  
CONTRACT No. 24-4119-D

SCALE:  
AS SHOWN  
SHEET  
1 OF 3



NORMAN E. PESSIN  
9881 GERMANTOWN ROAD  
LAUREL, MD 20783

**SKYLARK MAJOR COLLECTOR**  
**BOULEVARD**

NOTE: BASEMENT ELEVATIONS ARE FINISHED FLOOR ELEVATIONS UNLESS OTHERWISE NOTED.

**SEWER HOUSE CONNECTIONS/AS-BUILT**

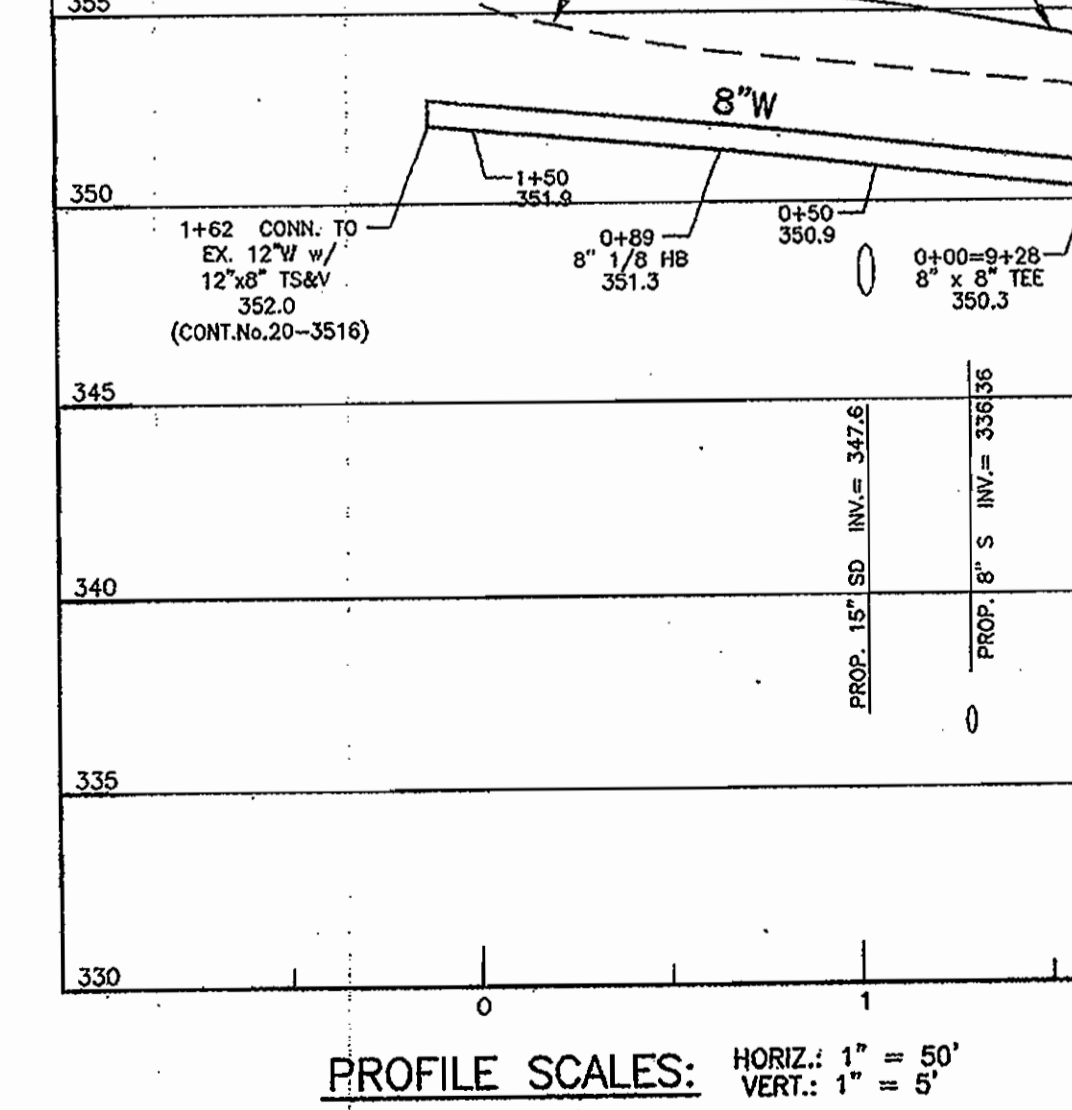
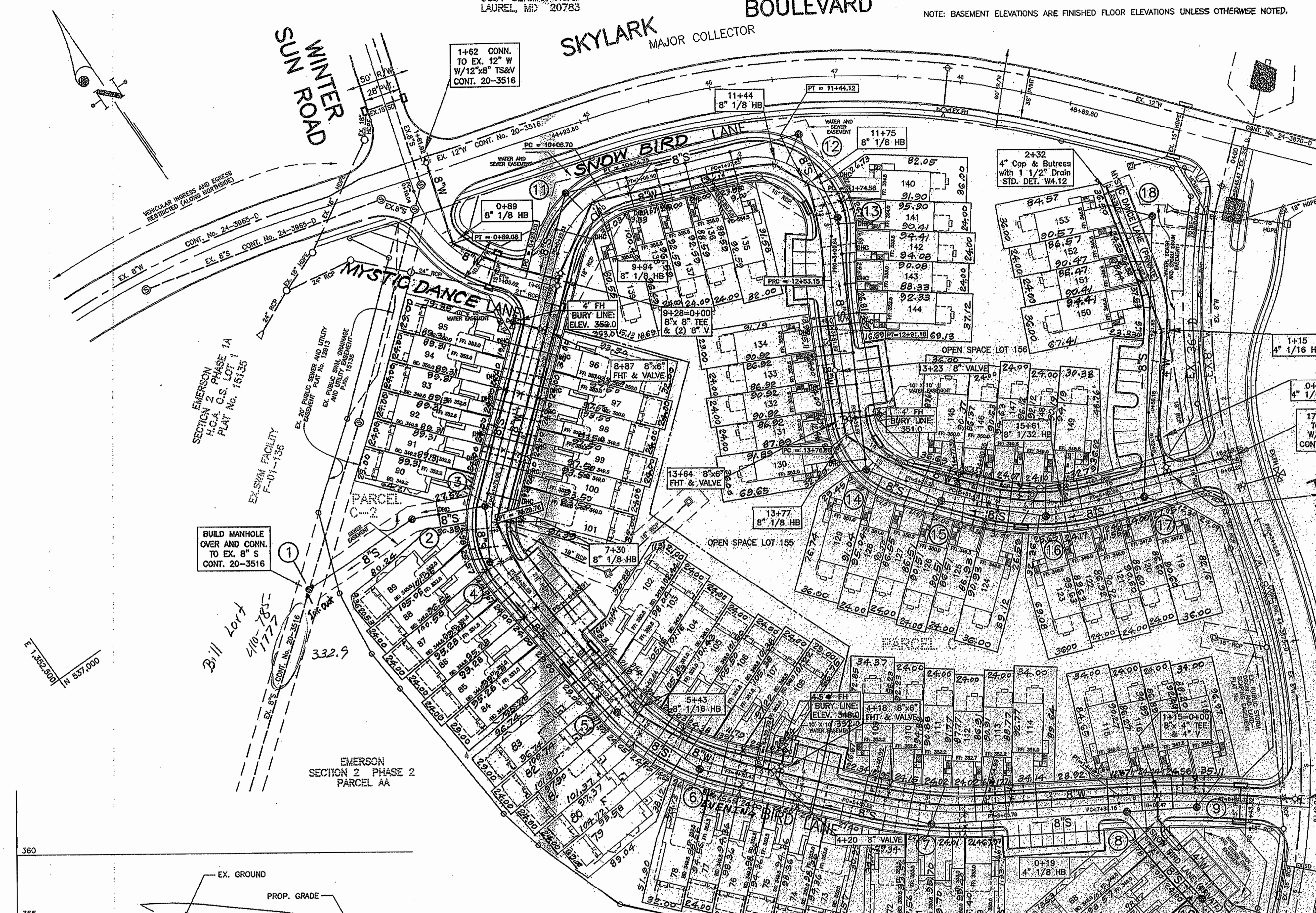
LOT NO.	SHC	SHC	SHC
102	9' to Lot 102 WHC.	52' to MH5.	47' to MH4A.
101	7' to Lot 101 WHC.	30' to MH3.	26' to Lot 100 SHC.
100	5' to Lot 100 WHC.	78' to MH4.	
99	7.5' to Lot 99 WHC.	15' to Lot 100 WHC.	
98	7.5' to Lot 98 WHC.	52' to Lot 94 SHC.	
97	7.5' to Lot 97 WHC.	21' to Lot 98 SHC.	61.5' to Hydrant.
96	5' to Lot 96 WHC.	20' to Lot 97 WHC.	
95	7.5' to Lot 95 WHC.	16' to Hydrant.	
94	17' to Lot 93 SHC.	8' to Lot 94 WHC.	52' to Lot 98 SHC.
93	8.5' to Lot 93 WHC.	17' to Lot 94 SHC.	
92	15' to Lot 91 WHC.	25' to Lot 92 WHC.	
91	36' to MH3.	6.5' to Lot 91 WHC.	27' to Lot 90 WHC.
90	22.5' to Lot 89 SHC.	25' to Lot 90 SHC.	35.5' to Lot 90 WHC.
89	19' to Lot 89 WHC.	22.5' to Lot 90 SHC.	7' to Lot 88 WHC.
88	26' to Lot 87 SHC.	17' to MH4.	25' to Lot 88 SHC.
87	10' to Lot 87 WHC.	22' to MH4.	10' to Lot 87 WHC.
86	12' to Lot 86 WHC.	53' to MH4A.	42' to MH4A.
85	10' to Lot 85 WHC.	15' to Lot 86 WHC.	44' to MH4A.
84	5.5' to Lot 84 WHC.	21' to Lot 85 WHC.	34' to MH5.
83	5' to Lot 83 WHC.	32' to Lot 84 WHC.	34' to MH5.
82	6' to Lot 82 WHC.	19' to Lot 83 WHC.	16.5' to MH5.
81	7.5' to Lot 81 SHC.	9' to Lot 82 WHC.	21.5' to MH5.
80	6' to Lot 80 WHC.	17' to Lot 81 WHC.	42.5' to MH5.
79	21' to Lot 78 SHC.	9' to Lot 79 WHC.	25' to MH6.
78	8' to Lot 78 WHC.	21' to Lot 79 SHC.	17' to MH6.
77	15' to Lot 77 WHC.	18' to Lot 78 WHC.	25' to MH6.
76	6' to Lot 76 WHC.	17' to Lot 77 WHC.	49' to MH6.
75	6' to Lot 75 WHC.	47.5' to Hydrant.	72.5' to MH6.
74	14.5' to Lot 75 WHC.	54' to Hydrant.	9' to Lot 74 WHC.
73	16' to Lot 74 WHC.	7' to Lot 73 WHC.	
72	29' to Lot 73 WHC.	8.5' to Lot 72 WHC.	39.5' to MH7.
71	8' to Lot 71 WHC.	19.5' to Lot 70 SHC.	13.5' to MH7.
70	19.5' to Lot 71 SHC.	21.5' to MH7.	8' to Lot 70 WHC.
69	17.5' to Lot 70 WHC.	10' to Lot 69 WHC.	42.5' to MH7.
68	8' to Lot 68 WHC.	27.5' to MH8.	
67	40' to MH10.	17' to Lot 68 SHC.	4.5' to Lot 67 WHC.
66	24.5' to MH10.	7' to Lot 66 WHC.	
65	19' to MH10.	18' to Lot 65 WHC.	

**SEWER HOUSE CONNECTION TABLE**

LOT No.	INV. @ P	MIN. CELL.	LOT No.	INV. @ P	MIN. CELL.
65	343.14	346.64	110	340.76	344.06
66	342.56	346.06	111	341.00	344.20
67	342.31	345.71	112	341.08	344.28
68	341.74	345.34	113	341.20	344.40
69	340.85	344.35	114	341.32	344.57
70	340.68	344.18	115	341.66	344.86
71	340.60	344.10	116	341.75	344.95
72	340.39	343.89	117	341.87	345.07
73	340.19	343.67	118	342.06	345.26
74	340.11	343.61	119	342.15	345.55
75	340.03	343.43	120	340.99	344.19
76	339.88	343.38	121	340.85	344.05
77	339.74	343.14	122	340.79	343.99
78	339.55	343.15	123	340.58	343.98
79	339.52	343.22	124	340.46	343.76
80	339.41	343.01	125	340.27	343.38
81	339.22	342.79	126	340.08	343.26
82	339.03	342.53	127	339.92	343.12
83	338.90	342.40	128	339.81	343.11
84	338.72	342.22	129	339.64	343.04
85	338.55	342.05	130	344.80	348.20
86	338.42	341.92	131	345.40	348.60
87	338.32	341.82	132	345.68	348.90
88	338.12	341.72	133	346.20	349.40
89	341.80	345.00	134	346.50	349.80
90	341.80	344.70	135	347.70	351.00
91	341.80	345.20	136	348.20	351.40
92	342.00	345.50	137	348.50	351.80
93	342.10	345.50	138	348.80	352.10
94	342.50	346.00	139	349.10	352.30
95	342.60	346.00	140	347.10	350.60
96	342.80	346.20	141	346.90	350.10
97	342.70	346.20	142	346.70	350.00
98	342.30	345.70	143	346.40	349.60
99	342.20	345.70	144	346.10	349.30
100	342.00	345.40	145	340.19	343.39
101	345.50	349.00	146	340.51	343.71
102	339.05	342.55	147	340.64	343.93
103	339.20	342.80	148	340.89	344.09
104	339.45	343.05	149	340.97	344.17
105	339.45	343.05	150	341.75	345.05
106	339.69	343.29	151	342.19	345.39
107	339.93	343.53	152	342.44	345.64
108	340.08	343.58	153	342.70	345.90
109	340.52	343.82			

**WATER AND SEWER STAKEOUT TABLE**

STREET NAME	CL. STA.	OFFSET	MANHOLE No.	REMARKS
EVENING BIRD LANE	1+82	6' RT.	MANHOLE No. 3	
EVENING BIRD LANE	2+22	8' RT.	MANHOLE No. 4	
EVENING BIRD LANE	3+76	8' RT.	MANHOLE No. 5	
EVENING BIRD LANE	4+52	7' RT.	MANHOLE No. 6	
EVENING BIRD LANE	6+39	10' RT.	MANHOLE No. 7	
EVENING BIRD LANE	8+50	5' RT.	MANHOLE No. 9	
SNOW BIRD LANE	0+66	20' LT.	MANHOLE No. 11	
SNOW BIRD LANE	2+37	25' LT.	MANHOLE No. 12	
SNOW BIRD LANE	2+86	6' LT.	MANHOLE No. 13	
SNOW BIRD LANE	4+95	6' RT.	MANHOLE No. 14	
SNOW BIRD LANE	5+57	8' RT.	MANHOLE No. 15	
SNOW BIRD LANE	6+39	6' RT.	MANHOLE No. 16	
SNOW BIRD LANE	7+18	7' RT.	MANHOLE No. 17	
SNOW BIRD LANE	2+10	20' RT.	MANHOLE No. 18	
EVENING BIRD LANE	9+34	6' LT.	W. STA. 0+00 CONN. TO EX. 8" W/8" TS & V	
EVENING BIRD LANE	8+18	6' LT.	W. STA. 1+15 8" X 4" T	
EVENING BIRD LANE	8+18	13' RT.	W. STA. 0+19 4" 1/8 HB	
EVENING BIRD LANE	6+90	6' LT.	W. STA. 0+43 8" W P.C. (R = 850')	
EVENING BIRD LANE	7+88	6' LT.	W. STA. 1+46 8" W P.T.	
EVENING BIRD LANE	6+79	6' LT.	W. STA. 2+55 8" W P.C. (R = 300')	
EVENING BIRD LANE	5+92	6' LT.	W. STA. 3+41 8" W P.T.	
EVENING BIRD LANE	5+14	6' LT.	W. STA. 4+18 8" X 8" FIRE HYDRANT TEE & VALVE	
EVENING BIRD LANE	5+14	23' LT.	W. STA. 0+30 FIRE HYDRANT	
EVENING BIRD LANE	6+00	6' LT.	W. STA. 4+33 8" W P.C. (R = 300')	
EVENING BIRD LANE	3+86	5' LT.	W. STA. 5+43 6" 1/16 HB (P.T.)	
EVENING BIRD LANE	2+84	6' LT.	W. STA. 6+44 8" W P.C. (R = 300')	
EVENING BIRD LANE	1+83	4' LT.	W. STA. 7+30 8" 1/8 HB (P.T.)	
EVENING BIRD LANE	0+35	6' LT.	W. STA. 8+87 8" X 8" FIRE HYDRANT TEE & VALVE	
EVENING BIRD LANE	0+35	21' RT.	W. STA. 8+87 FIRE HYDRANT	
SNOW BIRD LANE	0+06	6' RT.	W. STA. 9+28+0+00 8" X 8" TEE & (2) 8" VALVES	
SNOW BIRD LANE	0+75	0N CL.	W. STA. 9+94 8" 1/8 HB	
SNOW BIRD LANE	0+87	4' RT.	W. STA. 10+07 8" 1/16 HB P.C. (R = 300')	
SNOW BIRD LANE	1+06	6' RT.	W. STA. 10+25 8" W P.T.	
SNOW BIRD LANE	1+71	6' RT.	W. STA. 10+90 8" W P.C. (R = 300')	
SNOW BIRD LANE	2+28	4' RT.	W. STA. 11+44 8" 1/8 HB (P.T.)	
SNOW BIRD LANE	2+61	3' RT.	W. STA. 11+75 8" 1/8 HB P.C. (R = 300')	
SNOW BIRD LANE	3+45	6' RT.	W. STA. 12+53 8" W P.C. (R = 300')	
SNOW BIRD LANE	3+82	6' RT.	W. STA. 12+91 8" W P.T.	
SNOW BIRD LANE	4+55	6' RT.	W. STA. 13+84 8" X 8" FIRE HYDRANT TEE & VALVE	
SNOW BIRD LANE	4+55	23' LT.	W. STA. 13+84 FIRE HYDRANT	
SNOW BIRD LANE	4+67	7' RT.	W. STA. 13+77 8" 1/8 HB P.C. (R = 300')	
SNOW BIRD LANE	5+88	6' LT.	W. STA. 14+77 8" W P.T.	
SNOW BIRD LANE	5+81	-6' LT.	W. STA. 14+81 8" W P.C. (R = 281')	
SNOW BIRD LANE	6+54	4' LT.	W. STA. 15+61 8" 1/32 HB (P.T.)	
SNOW BIRD LANE	7+40	6' LT.	W. STA. 16+47 8" X 4" T	
SNOW BIRD LANE	7+83	6' LT.	W. STA. 17+00 CONN. TO EX. 8" W/8" TS & V	
MYSTIC DANCE LANE		6' LT.	W. STA. 0+00 8" X 8" TEE	
MYSTIC DANCE LANE	1+28	6' LT.	W. STA. 0+28 8" W P.C. (R = 300')	
MYSTIC DANCE LANE	0+64	3' LT.	W. STA. 0+89 8" 1/8 HB (P.T.)	
MYSTIC DANCE LANE	(-0+13)	17' LT.	W. STA. 1+62 CONN. TO EX. 12" W/12" X 6" TS & V	
EVENING BIRD LA. (PRV.)	1+13	15' LT.	W. STA. 1+05 4" CAP	
SNOW BIRD LANE (PRIVATE)	0+35	6' RT.	W. STA. 0+29 4" 1/16 HB	
SNOW BIRD LANE (PRIVATE)	1+22	5' RT.	W. STA. 1+15 4" 1/16 HB	
SNOW BIRD LANE (PRIVATE)	2+44	5' LT.	W. STA. 1+32 4" CAP	



**SEWER HOUSE CONNECTIONS/AS-BUILT**

LOT NO.	SHC	SHC	SHC
153	40' to MH18.	18' to Lot 153 WHC.	
152	34' to MH18.	7' to Lot 152 WHC.	
151	42' to MH18.	8.5' to Lot 151 WHC.	17' to Lot 152 WHC.
150	73' to MH18.	8.5' to Lot 150 WHC.	
149	7' to Lot 149 WHC.	58' to MH17.	40.5' to MH16.
148	28.5' to MH16.	10.5' to Lot 148 WHC.	81.5' to MH17.
147	61' to MH15.	39.2' to MH16.	9.5' to Lot 147 WHC.
146	12.5' to Lot 147 WHC.	11' to Lot 146 WHC.	42.5' to MH15.
145	51.5' to MH14.	34.3' to MH15.	54' to Hydrant.
144	5.5' to Lot 144 WHC.	49.5' to Lot 134 WHC.	30.5' to Lot 143 SHC.
143	17.5' to Lot 143 WHC.	55' to MH13.	
142	8.5' to Lot 143 WHC.	7.5' to Lot 142 WHC.	32' to MH13.
141	15' to Lot 142 WHC.	13.5' to Lot 141 WHC.	18.5' to MH13.
140	13.5' to Lot 140 WHC.	35' to MH13.	45.5' to MH12.
139	8' to Lot 139 WHC.	43' to MH11.	
138	24.5' to Lot 139 WHC.	15' to Lot 137 WHC.	59' to MH11.
137	79' to S.D. MH3.	8' to Lot 137 WHC.	
136	56' to S.D. MH3.	11' to Lot 136 WHC.	15.5' to Lot 137 WHC.
135	17.5' to S.D. MH3.	11' to Lot 135 WHC.	
134	14' to Lot 134 WHC.	90.5' to MH13.	
133	8.5' to Lot 133 WHC.	9' to Lot 134 WHC.	72.5' to Hydrant.
132	78.5' to MH14.	11.5' to Lot 132 WHC.	17.5' to Lot 133 WHC.
131	58.5' to MH14.	12.5' to Lot 131 WHC.	10.5' to Lot 132 WHC.
130	25.5' to MH14.	28.5' to Lot 129 WHC.	7' to Lot 130 WHC.
129	15' to Lot 129 WHC.	15.3' to SMH14.	13.5' to Lot 130 SHC.
128	10' to Lot 129 WHC.	14.5' to Lot 128 WHC.	21' to MH14.
127	16' to Lot 127 WHC.	11' to Lot 128 WHC.	32' to MH15.
126	15' to Lot 126 WHC.	8' to Lot 127 WHC.	14.5' to MH15.
125	7.5' to Lot 126 WHC.	10' to Lot 126 WHC.	25' to MH15.
124	12' to Lot 124 WHC.	34' to MH16.	57.5' to MH15.
123	12.5' to Lot 123 WHC.	18.5' to MH16.	

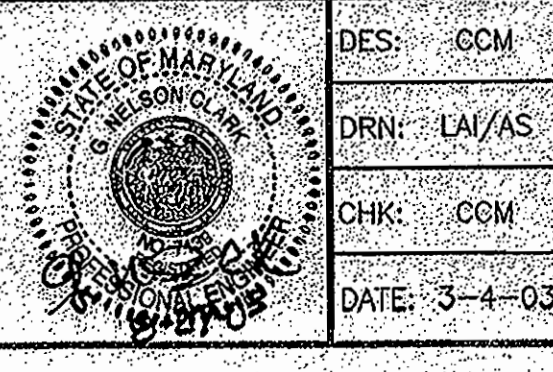
**EMERSON / 24-4119-D**

LOT NO.	SHC	SHC	SHC
122	24' to MH16.	23.5' to Lot 121 SHC.	68' to MH17.
121	43.5' to MH16.	23.5' to Lot 122 SHC.	45.5' to MH17.
120	10' to Lot 120 WHC.	10.5' to Lot 121 WHC.	22.5' to MH17.
119	23.7' to MH17.	4.3' to Lot 119 WHC.	27.3' to Lot 120 WHC.
118	17' to Lot 118 WHC.	33' to MH9.	18' to Inlet / I-10.
117	17' to Lot 116 WHC.	9.5' to Lot 117 WHC.	34' to MH9.
116	11.5' to Lot 115 WHC.	7' to Lot 116 WHC.	33' to MH8.
115	29.5' to MH8.	17' to Lot 115 WHC.	56.5' to Lot 114 SHC.
114	10' to Lot 114 WHC.	73' to MH8.	57' to Lot 69 WHC.
113	7' to Lot 113 WHC.	14' to Lot 114 WHC.	67.5' to MH7.
112	16.5' to Lot 112 WHC.	16.5' to Lot 113 WHC.	48' to MH7.
111	15.5' to Lot 111 WHC.	7' to Lot 112 WHC.	34.5' to MH7.
110	6' to Lot 110 WHC.	37' to MH7.	9.5' to Lot 111 WHC.
109	66.5' to MH7.	14' to Lot 109 WHC.	65' to Hydrant.
108	12' to Lot 108 WHC.	16' to Lot 107 WHC.	50.5' to MH6.
107	10' to Lot 107 WHC.	20' to Lot 106 SHC.	32.5' to MH6.
106	20' to Lot 107 SHC.	9' to Lot 106 WHC.	31' to MH6.
105	7' to Lot 105 WHC.	48' to MH5.	48' to MH6.
104	24' to Lot 105 SHC.	6' to Lot 104 WHC.	33' to MH5.
103	14' to Lot 104 WHC.	9' to Lot 103 WHC.	34' to MH5.

DEPARTMENT OF PUBLIC WORKS  
HOWARD COUNTY, MARYLAND

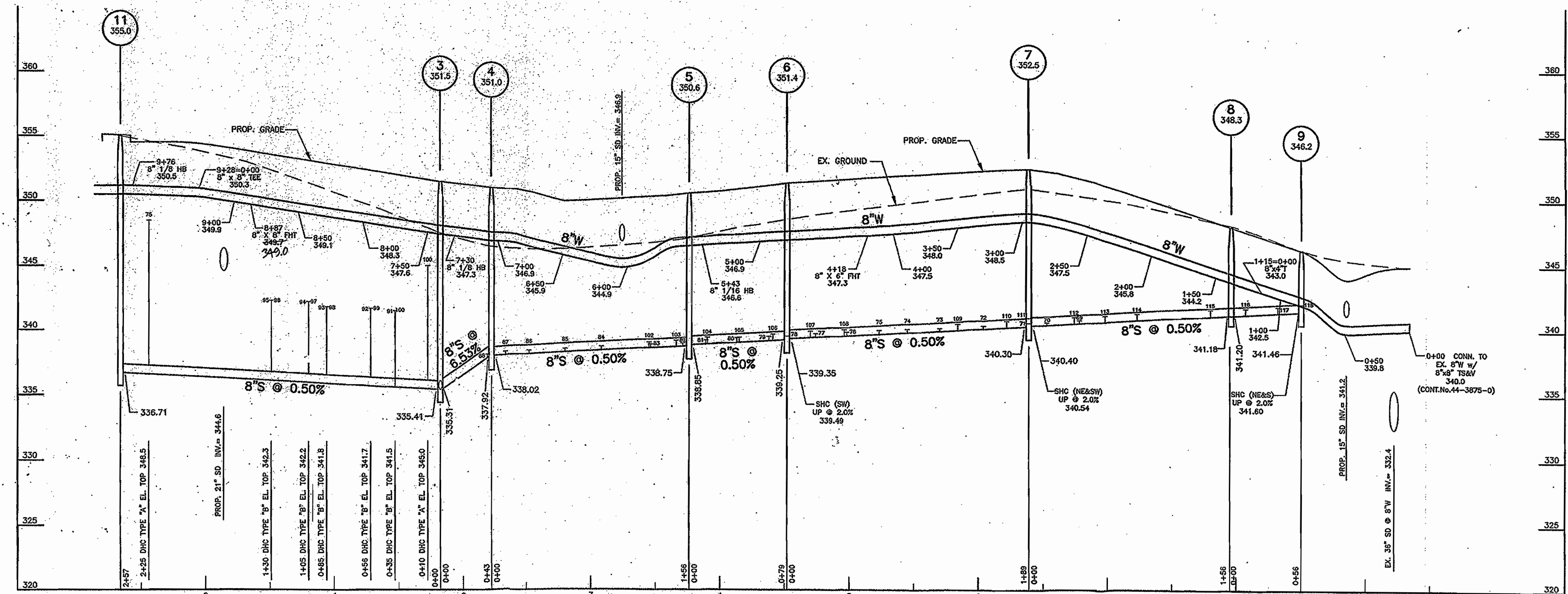
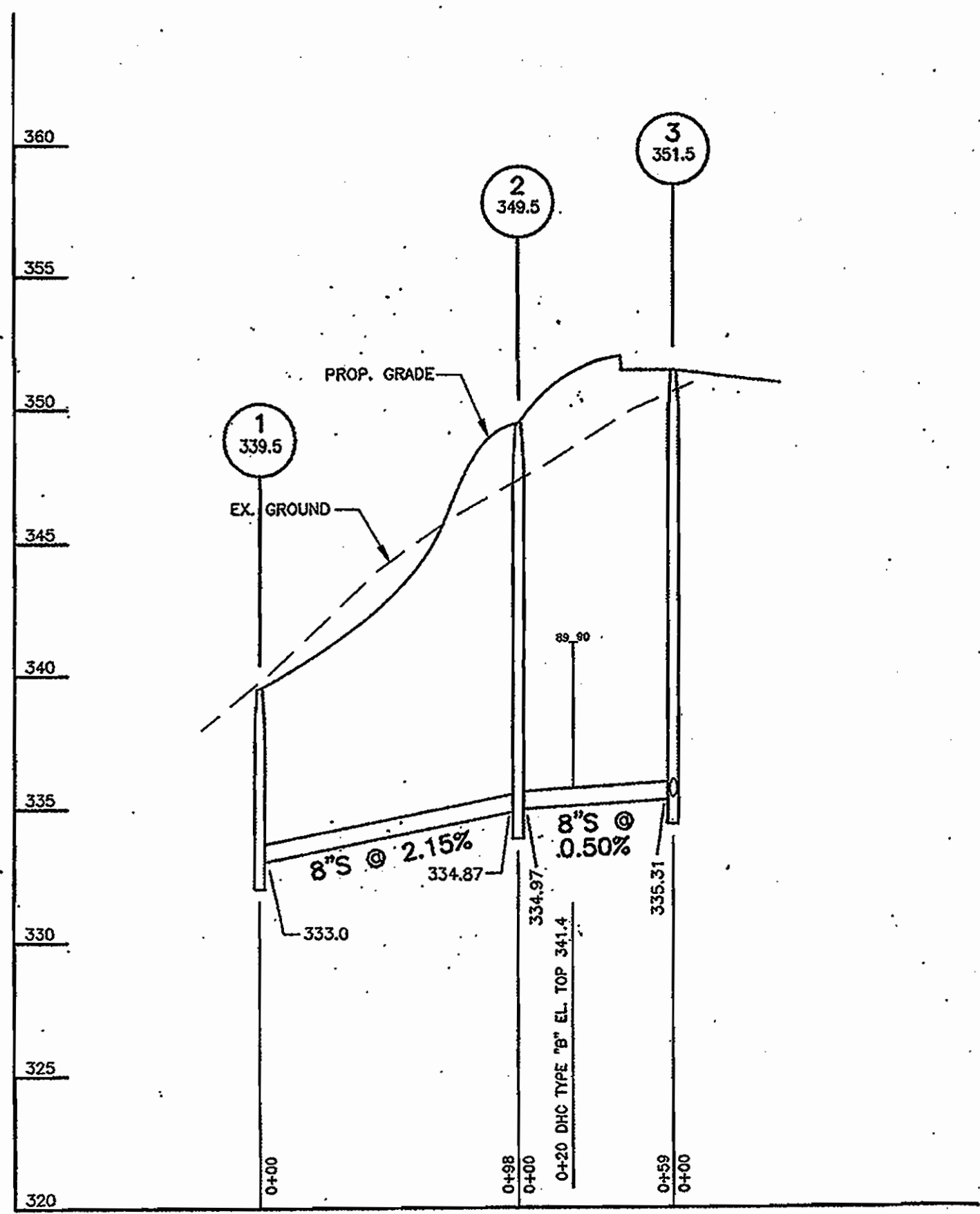
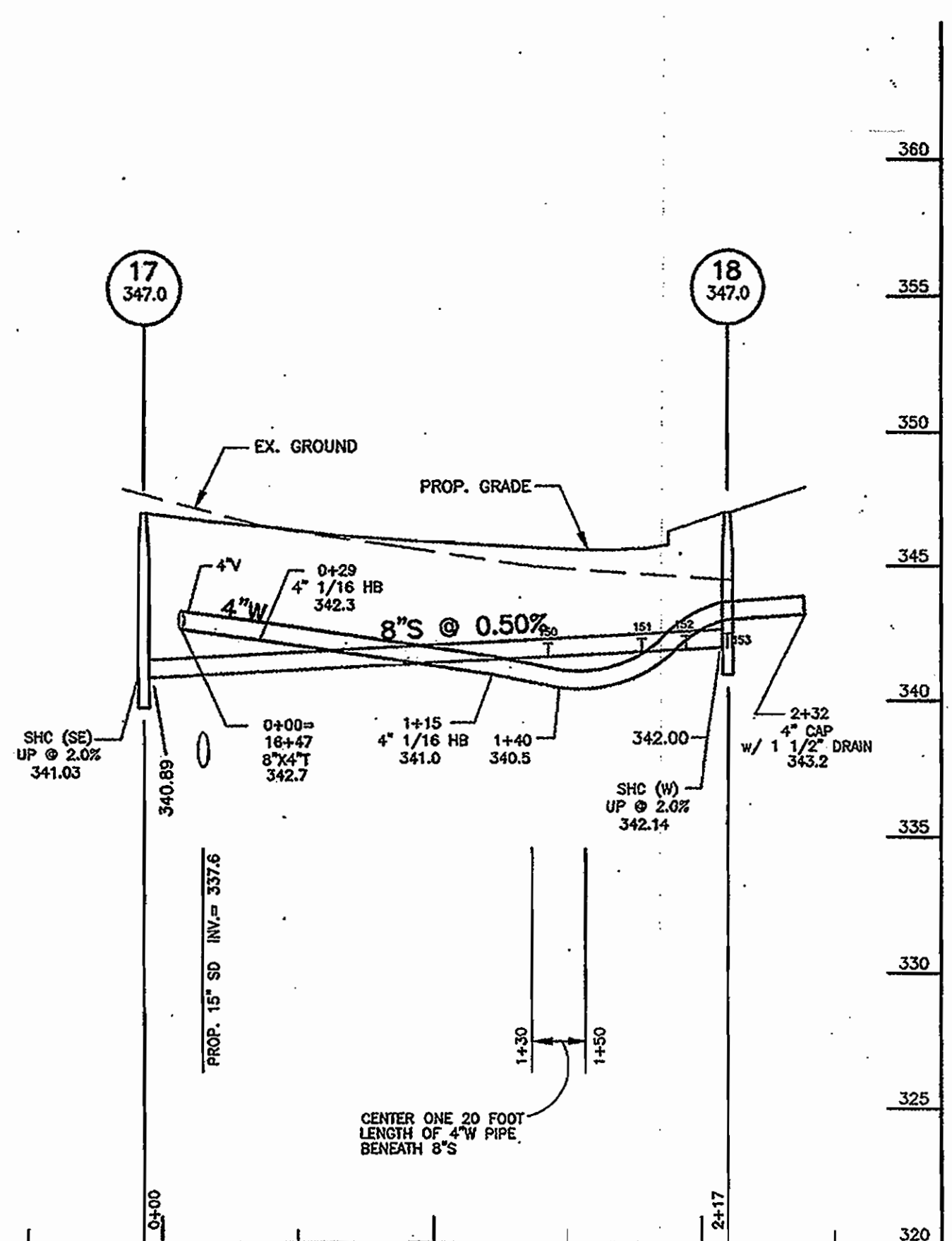
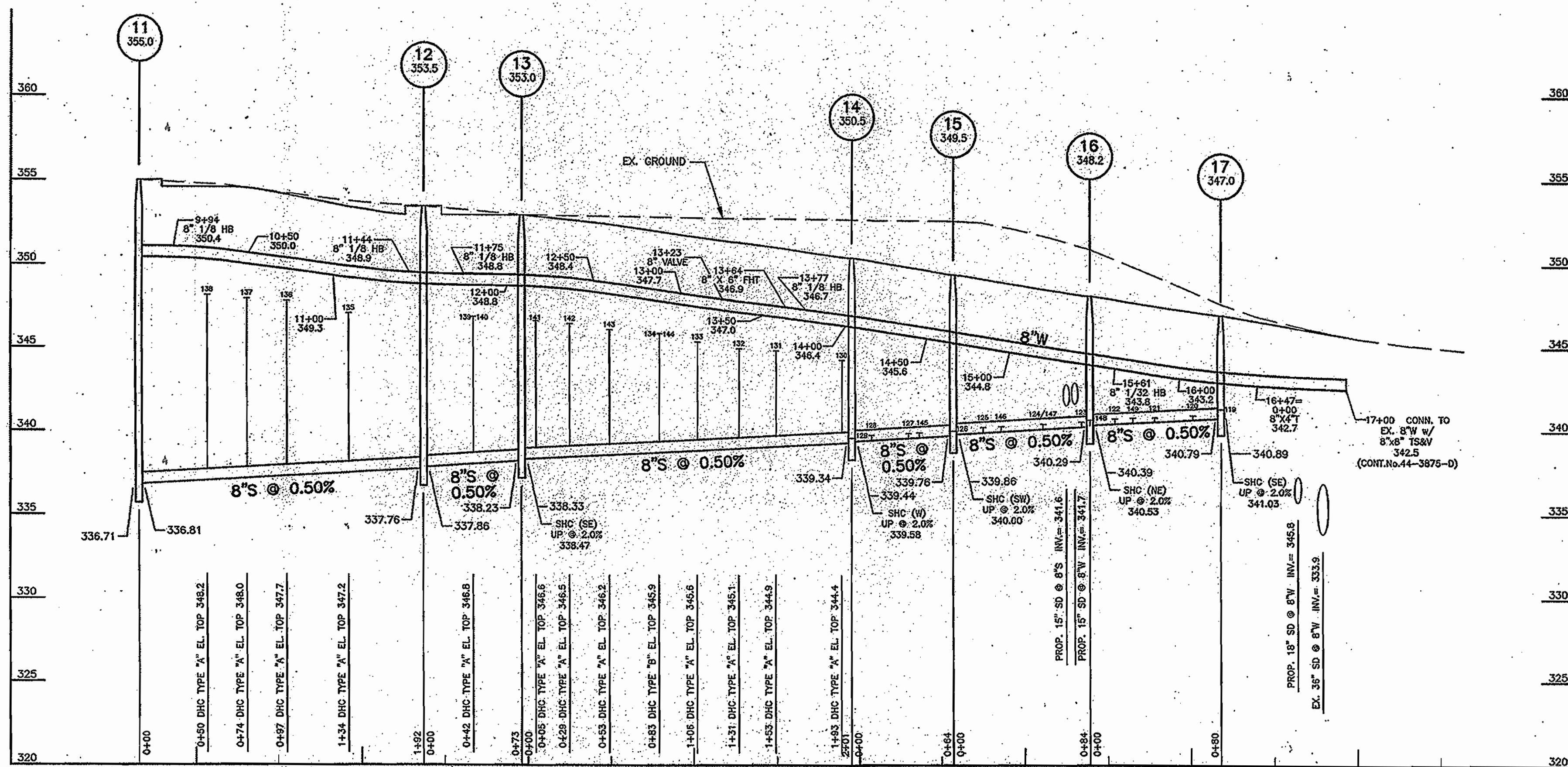
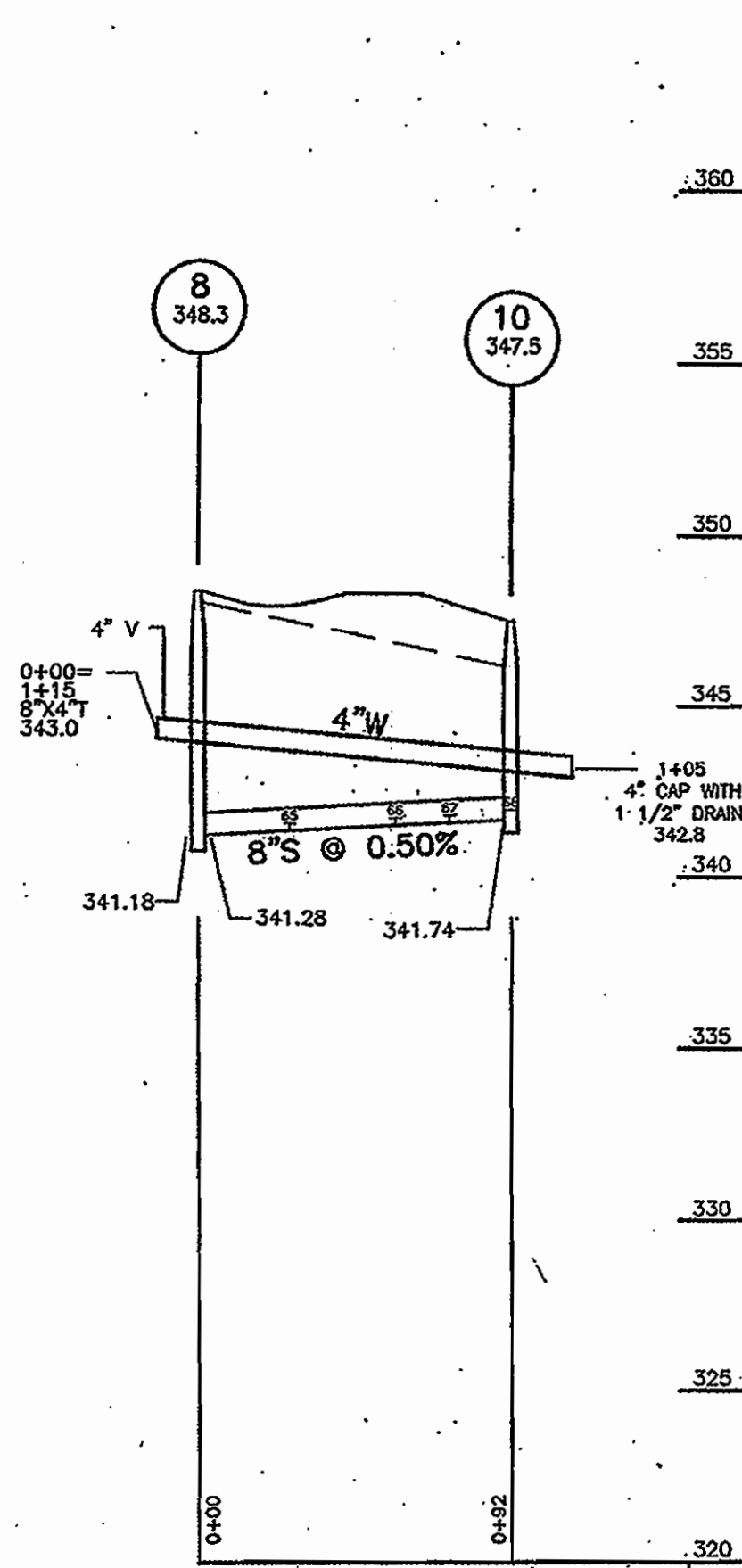
DEPARTMENT OF PLANNING & ZONING  
HOWARD COUNTY, MARYLAND

CLARK, FINELOCK & SACKETT, INC.  
ENGINEERS - PLANNERS - SURVEYORS  
7135 MINSTREL WAY COLUMBIA, MD 21045  
(410) 381-7500 (BALT.) (301) 621-8100 (WASH.)



DES.	CM	DRN.	LA/AS	CHK.	COM	CM	2	Rev. Twin WHC's to Single WHC's; Rev. FH @ Sta. 4+20	4-23-04





PROFILE SCALES: HORIZ.: 1" = 50'  
 VERT.: 1" = 5'

**AS BUILT**  
 DATE: 7-20-04/2-2-00

DEPARTMENT OF PUBLIC WORKS  
 HOWARD COUNTY, MARYLAND  
 Bureau of Utilities  
 M. Kelly, L. RMB 9/13/03

DEPARTMENT OF PLANNING & ZONING  
 HOWARD COUNTY, MARYLAND  
 Chief, Development Engineering Division  
 C. D. ... 9/13/03

CLARK · FINEFROCK & SACKETT, INC.  
 ENGINEERS · PLANNERS · SURVEYORS  
 7135 MINISTREL WAY COLUMBIA, MD 21045  
 (410) 381-7500 BALT. (301) 621-8100 WASH.



DES:	CCM		
DRN:	LAI/AS		
CHK:	CCM		
DATE:	3-4-03		
BY:	CM - 3	Rev. F.H. Tee Elev. Sta. 8+87	4-23-04
NO.		REVISION	DATE

**WATER AND SEWER PLAN AND PROFILES**  
 600' SCALE MAP NO. 47 BLOCK NO. B

**EMERSON, SECTION 2, PHASE 2**  
 LOTS 65 THRU 153 AND  
 OPEN SPACE LOTS 154 THRU 156  
 A RESUBDIVISION OF PARCELS C-1 AND C-2  
 6th ELECTION DISTRICT  
 CONTRACT No. 21-4119-D

SCALE:  
 AS SHOWN  
 SHEET  
 3 OF 3