

QUANTITIES				
ITEMS	QUANTITIES ESTIMATED	AS-BUILT		
		QUANTITIES	TYPE	MANUFACTURER/SUPPLIER
4" PVC SEWER (PUBLIC)	103 L.F.	104	PVC SDR 35	DIAMOND
4" STOPPER	1 EA.	1EA		
4" MANHOLE	1 EA.	1EA		
TYPE 'B' DROP CONN.	1 EA.	1EA		
4" CLEANOUT	1 EA.	1EA		
12" x 12" TEE	1 EA.	1EA		
12" 1/8 HB	9 EA.	9EA		
12" 1/16 HB	3 EA.	3EA		
12" x 6" FHT	4 EA.	4EA		
FH	4 EA.	4EA	KENNEDY	AWNA
4" W	53 L.F.	53 L.F.	DIP 52	TYLER PIPE
12" x 4" TEE	2 EA.	2 EA		
4" CAP	2 EA.	2 EA		
8" CAP	1 EA.	1EA		
8" W	10 L.F.	12 L.F.	DIP 52	TYLER PIPE
6" W	99 L.F.	69 L.F.	DIP 52	TYLER PIPE
12" W	1985 L.F.	1,992 L.F.	DIP 52	TYLER PIPE
12" VALVE	3 EA.	3 EA	MD GATE	M + J HUGHES
8"x12" INCREASER	1 EA.	1 EA		
8" VALVE	1 EA.	1 EA	MD. GATE	M + J HUGHES
4" VALVE	2 EA.	2 EA		
6" VALVE	4 EA.	4 EA		

NAME OF UTILITY CONTRACTOR:

SURVEY AND DRAFTING DIV. CHECKED BY: AS-BUILT DATE:

BENCH MARK DESCRIPTIONS

STATION 2542002 (CONCRETE MONUMENT)
ELEV. = 363.638 FOR VERTICAL CONTROL ONLY.

STATION 37DR (1/4" REBAR)
N 16°48'11.74" E 416566.7155' FOR HORIZONTAL CONTROL ONLY.

STATION 361A (CONCRETE MONUMENT)
N 16°42'05.9263" E 416313.5119' FOR HORIZONTAL CONTROL ONLY.

STATION IS LOCATED 1000' +/- WEST OF RTE. 175 ON TRANSMISSION LINE AT G+E TOWER 19-E NEAR HANOVERS RESTAURANT ENTRANCE.

STATION IS LOCATED 0.45' +/- MILES NORTH OF RTE. 175 AND 76' +/- EAST OF THE EAST CURB OF SNOWDEN RIVER PARKWAY.

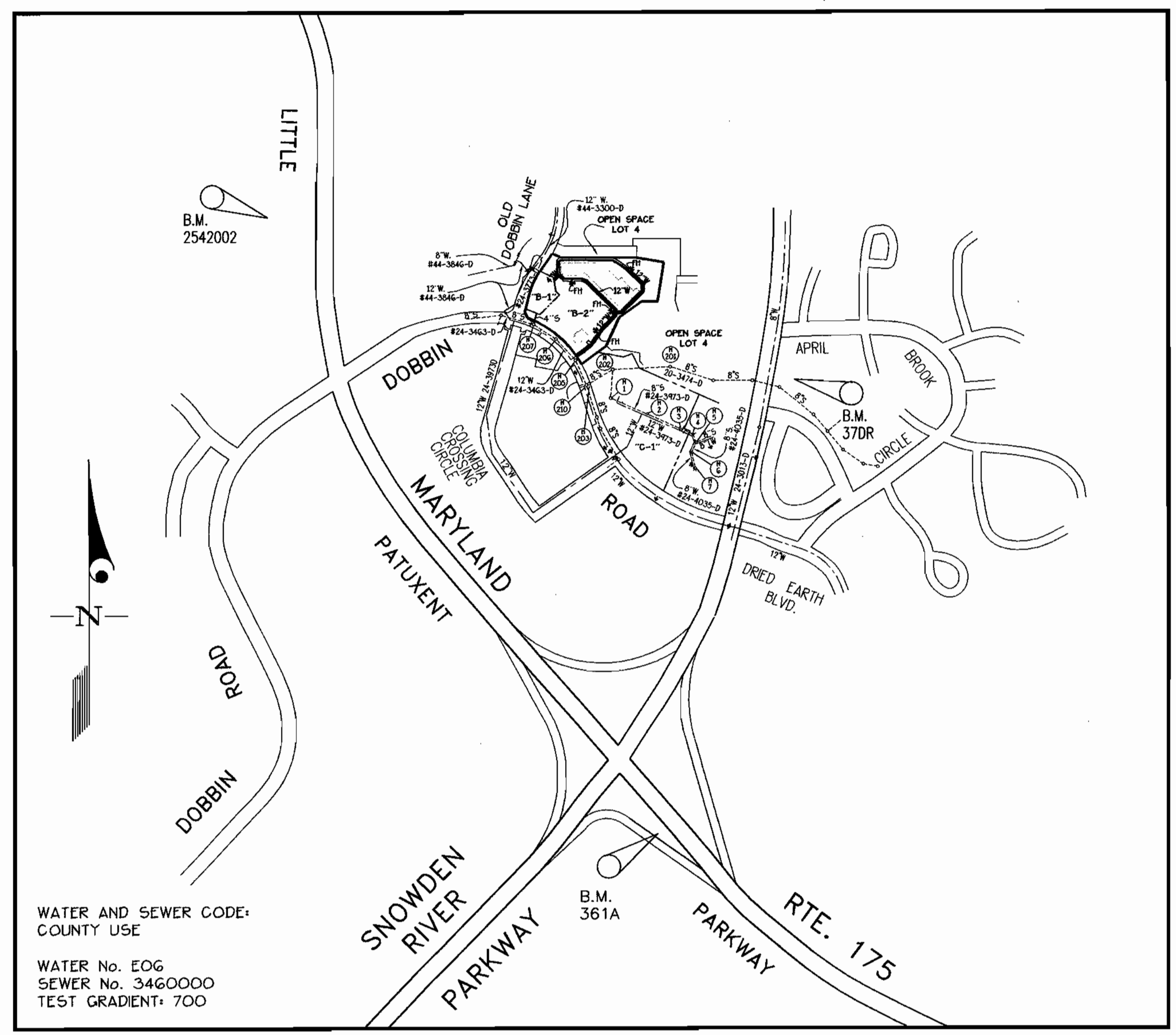
STATION IS LOCATED AT THE SOUTHEAST CORNER OF THE INTERSECTION OF SNOWDEN RIVER PARKWAY AND RTE. 175 3' +/- FROM CURB AND 5.7' +/- FROM END OF GUARD RAIL.

TYPE OF BUILDING	COMMERCIAL (RETAIL + RESTAURANT)
NUMBER OF UNITS	2
NUMBER OF S.H.C.'s	1
NUMBER OF W.H.C.'s	2
DRAINAGE AREA	LITTLE PATUXENT
TREATMENT PLANT	LITTLE PATUXENT WATER RECLAMATION PLANT

GENERAL NOTES

- PART I**
- APPROXIMATE LOCATION OF EXISTING MAINS ARE SHOWN. THE CONTRACTOR SHALL TAKE ALL NECESSARY PRECAUTIONS TO PROTECT EXISTING MAINS AND SERVICES AND MAINTAIN UNINTERRUPTED SUPPLY. ANY DAMAGE INCURRED SHALL BE REPAIRED IMMEDIATELY TO THE SATISFACTION OF THE ENGINEER AT THE CONTRACTOR'S EXPENSE.
 - ALL HORIZONTAL CONTROLS ARE BASED ON MARYLAND STATE COORDINATES (NORTH AMERICAN DATUM 1983 (NAD '83)).
 - ALL VERTICAL CONTROLS ARE BASED ON NAVD 88.
 - ALL PIPE ELEVATIONS SHOWN ARE INVERT ELEVATIONS UNLESS OTHERWISE NOTED ON THE PLANS.
 - CLEAR ALL UTILITIES BY A MINIMUM OF 12". CLEAR ALL POLES BY 5'-0" MINIMUM OR TUNNEL AS REQUIRED UNLESS OTHERWISE NOTED. THE OWNER HAS CONTACTED THE UTILITY COMPANIES AND HAS MADE ARRANGEMENTS FOR BRACING OF POLES AS SHOWN ON THE DRAWINGS. IN THE EVENT THE CONTRACTOR'S WORK REQUIRES THE BRACING OF ADDITIONAL POLES, ANY COST INCURRED BY THE OWNER FOR BRACING OF ADDITIONAL POLES OR DAMAGES SHALL BE DEDUCTED FROM MONEY OWED THE CONTRACTOR. THE CONTRACTOR SHALL COORDINATE WITH THE UTILITY COMPANIES TO SCHEDULE THE BRACING OF THE POLES.
 - FOR DETAILS NOT SHOWN ON THE DRAWINGS, AND FOR MATERIALS AND CONSTRUCTION METHODS USE HOWARD COUNTY DESIGN MANUAL VOLUME IV, STANDARD SPECIFICATIONS AND DETAIL FOR CONSTRUCTION (LATEST EDITION). THE CONTRACTOR SHALL HAVE A COPY OF VOLUME IV ON THE JOB.
 - WHERE TEST PITS HAVE BEEN MADE ON EXISTING UTILITIES, THEY ARE NOTED BY THE SYMBOL (P) AT THE LOCATION OF THE TEST PIT. A NOTE OR NOTES CONTAINING THE RESULTS OF THE TEST PIT IS INCLUDED ON THE DRAWINGS. EXISTING UTILITIES IN THE VICINITY OF THE PROPOSED WORK FOR WHICH TEST PITS HAVE NOT BEEN DUG SHALL BE LOCATED BY THE CONTRACTOR TWO WEEKS IN ADVANCE OF CONSTRUCTION OPERATIONS AT HIS OWN EXPENSE.
 - CONTRACTOR SHALL NOTIFY THE FOLLOWING UTILITY COMPANIES OR AGENCIES AT LEAST (5) WORKING DAYS BEFORE STARTING WORK SHOWN ON THESE PLANS:

AT+T	1-800-252-1133
STATE HIGHWAY ADMINISTRATION	410-531-5533
BGE CONTRACTOR SERVICES	410-850-4620
BGE UNDER GROUND DAMAGE CONTROL	410-787-9068
MSS UTILITY	1-800-257-7777
COLONIAL PIPELINE CO.	410-745-1390
HOWARD COUNTY DEPARTMENT OF PUBLIC WORKS BUREAU OF UTILITIES	410-313-4900
VERIZON	1-800-743-0033/410-224-9210
 - TREES AND SHRUBS ARE TO BE PROTECTED FROM DAMAGE TO MAXIMUM EXTENT. TREES AND SHRUBS LOCATED WITHIN THE CONSTRUCTION STRIP ARE NOT TO BE REMOVED OR DAMAGED BY THE CONTRACTOR.
 - CONTRACTOR SHALL REMOVE TREES, STUMPS AND ROOTS ALONG LINE OF EXCAVATION. PAYMENT FOR SUCH REMOVAL SHALL BE INCLUDED IN THE UNIT PRICE BID FOR CONSTRUCTION OF THE MAIN.
 - THE CONTRACTOR SHALL NOTIFY THE BUREAU OF HIGHWAYS, HOWARD COUNTY, AT (410) 313-7450 AT LEAST FIVE (5) WORKING DAYS BEFORE ANY OPEN CUT OF ANY COUNTY ROAD OR BORING/JACKING OF ANY COUNTY ROAD FOR LAYING WATER/SEWER MAINS OR HOUSE CONNECTIONS. THE APPROVAL OF THESE DRAWINGS WILL CONSTITUTE COMPLIANCE WITH DPW REQUIREMENT PER SECTION 18.114(C) OF THE HOWARD COUNTY CODE.
- PART II - WATER**
- ALL WATER MAINS TO BE D.I.P. CLASS 52 UNLESS OTHERWISE NOTED.
 - TOPS OF ALL WATER MAINS TO HAVE A MINIMUM OF 3-1/2' COVER UNLESS OTHERWISE NOTED.
 - VALVES ADJACENT TO TEES SHALL BE STRAPPED TO TEES.
 - ALL FITTINGS SHALL BE BUTTRESSED OR ANCHORED WITH CONCRETE IN ACCORDANCE WITH THE STANDARD DETAILS UNLESS OTHERWISE PROVIDED FOR ON THE DRAWINGS.
 - FIRE HYDRANTS SHALL BE SET TO THE BURY LINE ELEVATIONS SHOWN ON THE DRAWINGS. ALL FIRE HYDRANTS SHALL BE INSTALLED IN ACCORDANCE WITH THE STANDARD DETAILS. SOIL AROUND THE FIRE HYDRANT SHALL BE COMPACTED IN ACCORDANCE WITH SECTION 1000 AND 1005 OF THE STANDARD SPECIFICATIONS.
 - THE CONTRACTOR SHALL NOT OPERATE ANY WATER MAIN VALVES ON THE EXISTING WATER SYSTEM.
 - ALL WATER HOUSE CONNECTIONS SHALL BE FOR INSIDE METER SETTING UNLESS OTHERWISE NOTED ON PLANS OR IN SPECIFICATIONS.
 - FOR SPRINKLER SYSTEM FOR ALL TOWNHOMES OR MULTI-FAMILY DWELLING UNITS SHOULD HAVE A MINIMUM OF 1' CONNECTION WITH A 3/4" METER.
- PART III - SEWER**
- ALL SEWER MAINS SHALL BE DIP AND P.V.C. UNLESS OTHERWISE NOTED.
 - ALL MANHOLES SHALL BE 4' -0" INSIDE DIAMETER UNLESS OTHERWISE NOTED.
 - FORCE MAINS SHALL BE D.I.P. ONLY.
 - MANHOLES SHOWN WITH 12" AND 16" WALLS ARE FOR BRICK MANHOLES ONLY.
 - MANHOLES DESIGNATED W.T. IN PLAN AND PROFILE SHALL HAVE WATERTIGHT FRAME AND COVER, STANDARD DETAIL G552. WHERE WATERTIGHT MANHOLE FRAMES AND COVERS ARE USED, SET TOP OF FRAME 1'-6" ABOVE FINISHED GRADE UNLESS OTHERWISE NOTED ON DRAWINGS.
 - HOUSE(S) WITH THE SYMBOL 'C.N.S.' INDICATES THAT CELLAR CANNOT BE SERVED.



VICINITY MAP
SCALE: 1" = 600'

CONTRACT No. 24-4082-D
ROUTE 175 COMMERCIAL
SECTION 1 AREA 2
PARCELS "B-1" + "B-2"
HOWARD COUNTY, MARYLAND
DEPARTMENT OF PUBLIC WORKS

SEDIMENT CONTROL MEASURES WILL BE IMPLEMENTED IN ACCORDANCE WITH SECTION 219 OF THE SPECIFICATIONS + WITH SITE DEVELOPMENT PLAN SDF-03-42 FOR SEDIMENT + EROSION CONTROL.

REVIEWED FOR HOWARD SOIL CONSERVATION DISTRICT AND MEETS TECHNICAL REQUIREMENT.

Jim Meyer 11/16/02
SIGNATURE DATE
U.S.D.A. NATURAL RESOURCES CONSERVATION SERVICE

THIS DEVELOPMENT PLAN IS APPROVED FOR SOIL EROSION AND SEDIMENT CONTROL BY THE HOWARD SOIL CONSERVATION DISTRICT.

Philip R. Rabin 11/16/02
APPROVED DATE
HOWARD S.C.D.

DEPARTMENT OF PUBLIC WORKS
HOWARD COUNTY, MARYLAND
Philip R. Rabin
CHIEF, BUREAU OF UTILITIES DATE

DEPARTMENT OF PLANNING AND ZONING
HOWARD COUNTY, MARYLAND
William J. Rabin
CHIEF, DEVELOPMENT ENGINEERING DIVISION DATE

GLW GUTSCHICK LITTLE & WEBER, P.A.
CIVIL ENGINEERS, LAND SURVEYORS, LAND PLANNERS, LANDSCAPE ARCHITECTS
3904 NATIONAL DRIVE - SUITE 250 - BERTONVILLE OFFICE PARK
BORTONVILLE, MARYLAND 20862
TEL: 301-421-4024 FAX: 301-421-4196



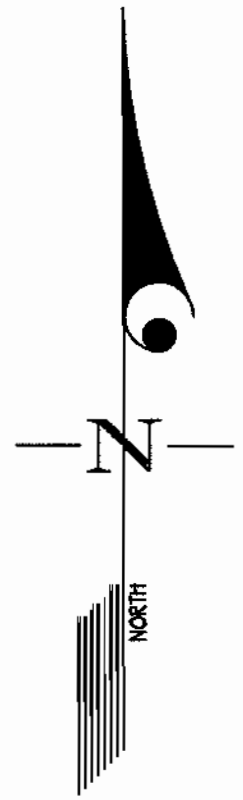
DES:					
DRN:	wsj/klp				
CHK:	DT				
DATE:	OCT. 2002	BY:	NO	REVISION:	DATE:
				AS-BUILT W/S DATA	12/20/03

COVER SHEET
SCALE AS SHOWN
600' SCALE MAP NO. 36 BLOCK NO. 18

ROUTE 175 COMMERCIAL
SECTION 1 AREA 2
PARCELS "B-1" + "B-2"
CONTRACT No. 24-4082-D
ELECTION DISTRICT No. 6 HOWARD COUNTY, MARYLAND

SCALE AS SHOWN
SHEET 1 OF 3

GLW FILE #02080
WATER + SEWER FINAL



LIBERTY PROPERTY LIMITED PARTNERSHIP
ROUTE 175 COMMERCIAL
SECTION 1 AREA 2
PARCEL "A"
PLAT No. 14160

OLD DOBBIN LANE
(OWNER COLLECTOR)
VARIABLE WIDTH ROAD
PLAT No. 12064 (F 96-41)

COLUMBIA CROSSING CIRCLE
(PRIVATE)

DOBBIN ROAD
(GO. R. AND
OWNER COLLECTOR)
(PUBLIC)

PARCEL D
ROUTE 175 COMMERCIAL
SECTION 1 AREA 1
COLUMBIA CROSSING SHOPPING
CENTER
PLAT No. 12177

PARCEL R
ROUTE 175 COMMERCIAL
SECTION 1 AREA 1
COLUMBIA CROSSING SHOPPING CENTER
PLAT No. 12831

PARCEL S
ROUTE 175 COMMERCIAL
SECTION 1 AREA 2
COLUMBIA CROSSING SHOPPING
CENTER
PLAT No. 12831

NOTE: CONTRACTOR IS RESPONSIBLE FOR
REPLACING EXISTING PAVING REMOVED. DURING
CONSTRUCTION OF PROPOSED 4" SEWER HOUSE
CONNECTION FOR PARCEL B-1. SEE HOWARD
COUNTY STANDARD DETAIL G. 4.01.

0+00 REMOVE EX. 8" CAP +
BUTTRESS + CONNECT TO
EX. 8" D.I.P. WITH 12" x 8"
INCREASER
(CONTR. #24-3463-D)

EXISTING VALVE TO BE CLOSED
WHEN MAKING CONNECTION TO
EXISTING SYSTEM.

BUILD MANHOLE OVER
CONN. TO EX. 8" S.
BUILT UNDER CONTR.
#24-3463-D
LIMIT OF PUBLIC
MAINTENANCE

NOTE:
1. ALL SEWER ON PLAN IS PRIVATE, UNLESS
OTHERWISE NOTED.

PLAN VIEW
SCALE: 1" = 50'

GLW FILE #02080
WATER + SEWER FINAL

DEPARTMENT OF
PUBLIC WORKS
HOWARD COUNTY, MARYLAND

John J. ... 10-31-02
CHIEF, BUREAU OF UTILITIES DATE

DEPARTMENT OF
PLANNING AND ZONING
HOWARD COUNTY, MARYLAND

William ... 11/6/02
CHIEF, DEVELOPMENT ENGINEERING DIVISION DATE

GLW GUTSCHICK LITTLE & WEBER, P.A.
CIVIL ENGINEERS, LAND SURVEYORS, LAND PLANNERS, LANDSCAPE ARCHITECTS
3904 NATIONAL DRIVE - SUITE 250 - BURTONTOWN OFFICE PARK
BURTONTOWN, MARYLAND 20866
TEL: 301-421-4024 BALT: 410-880-1820 DC/VA: 301-989-2524 FAX: 301-421-4186



DES:	WSJ				
DRN:	kjp				
CHK:	WSJ				
DATE:	OCT. 2002	BY:	NO	REVISION:	1/2

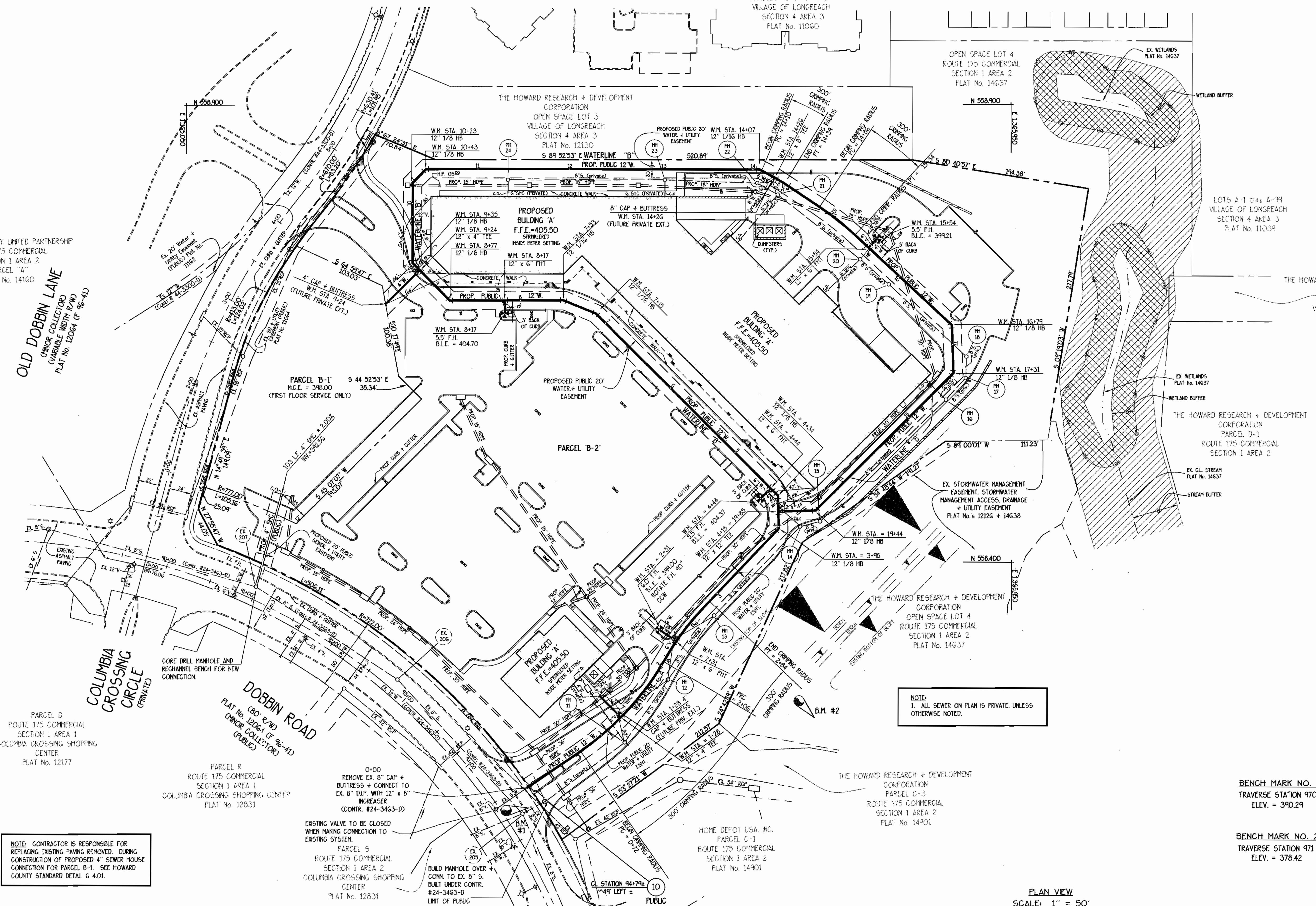
WATER and SEWER EXTENSION
PLAN

600' SCALE MAP NO. 36 BLOCK NO. 18

ROUTE 175 COMMERCIAL
SECTION 1 AREA 2
PARCELS "B-1" + "B-2"
PLAT No.
CONTRACT No. 24-4082-D
ELECTION DISTRICT No. 6 HOWARD COUNTY, MARYLAND

SCALE
AS
SHOWN

SHEET
2 OF 3



BENCH MARK NO. 1
TRAVERSE STATION 970
ELEV. = 390.29

BENCH MARK NO. 2
TRAVERSE STATION 971
ELEV. = 378.42

THE HOWARD RESEARCH + DEVELOPMENT
CORPORATION
OPEN SPACE LOT 3
VILLAGE OF LONGREACH
SECTION 4 AREA 3
PLAT No. 11060

OPEN SPACE LOT 4
ROUTE 175 COMMERCIAL
SECTION 1 AREA 2
PLAT No. 14637

LOTS A-1 thru A-99
VILLAGE OF LONGREACH
SECTION 4 AREA 3
PLAT No. 11039

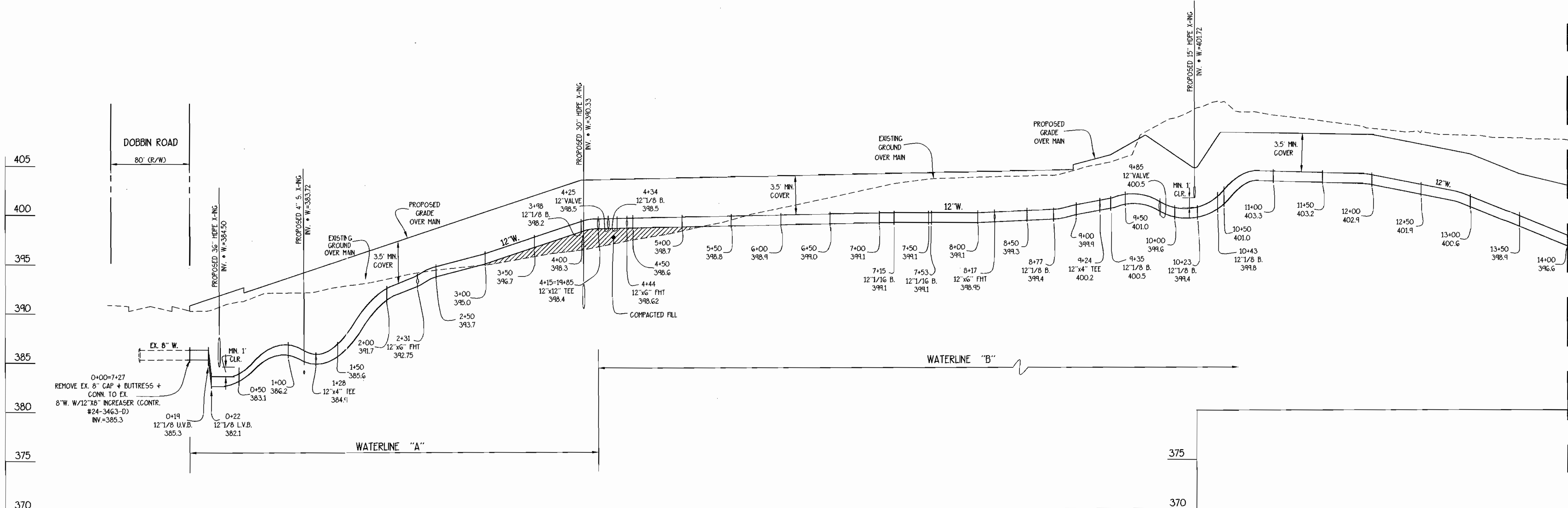
THE HOWARD RESEARCH + DEVELOPMENT
CORPORATION
OPEN SPACE LOT 2
VILLAGE OF LONGREACH
SECTION 4 AREA 3
PLAT No. 12130

THE HOWARD RESEARCH + DEVELOPMENT
CORPORATION
PARCEL D-1
ROUTE 175 COMMERCIAL
SECTION 1 AREA 2

THE HOWARD RESEARCH + DEVELOPMENT
CORPORATION
OPEN SPACE LOT 4
ROUTE 175 COMMERCIAL
SECTION 1 AREA 2
PLAT No. 14637

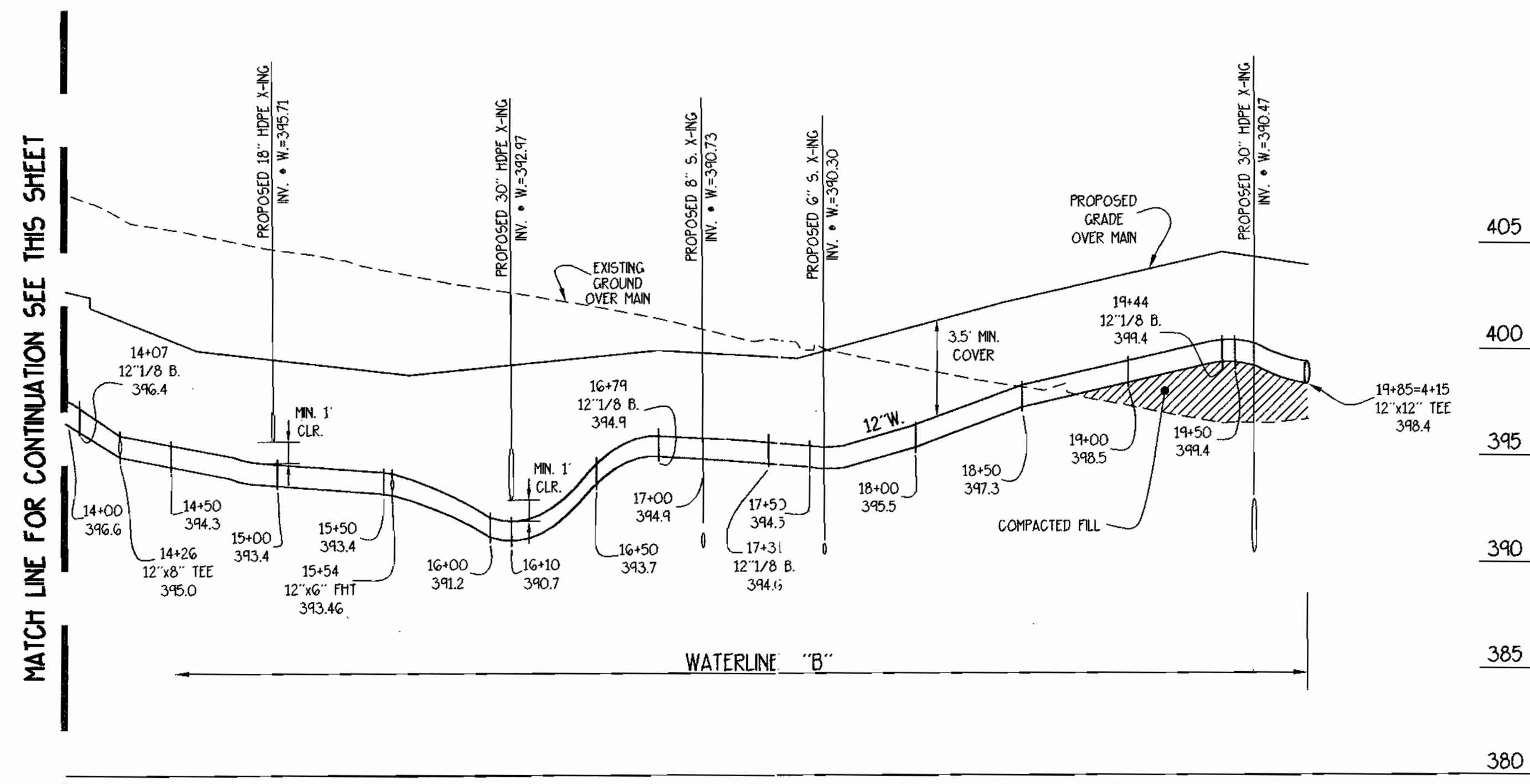
THE HOWARD RESEARCH + DEVELOPMENT
CORPORATION
PARCEL C-3
ROUTE 175 COMMERCIAL
SECTION 1 AREA 2
PLAT No. 14901

HOME DEPOT USA, INC.
PARCEL C-1
ROUTE 175 COMMERCIAL
SECTION 1 AREA 2
PLAT No. 14901



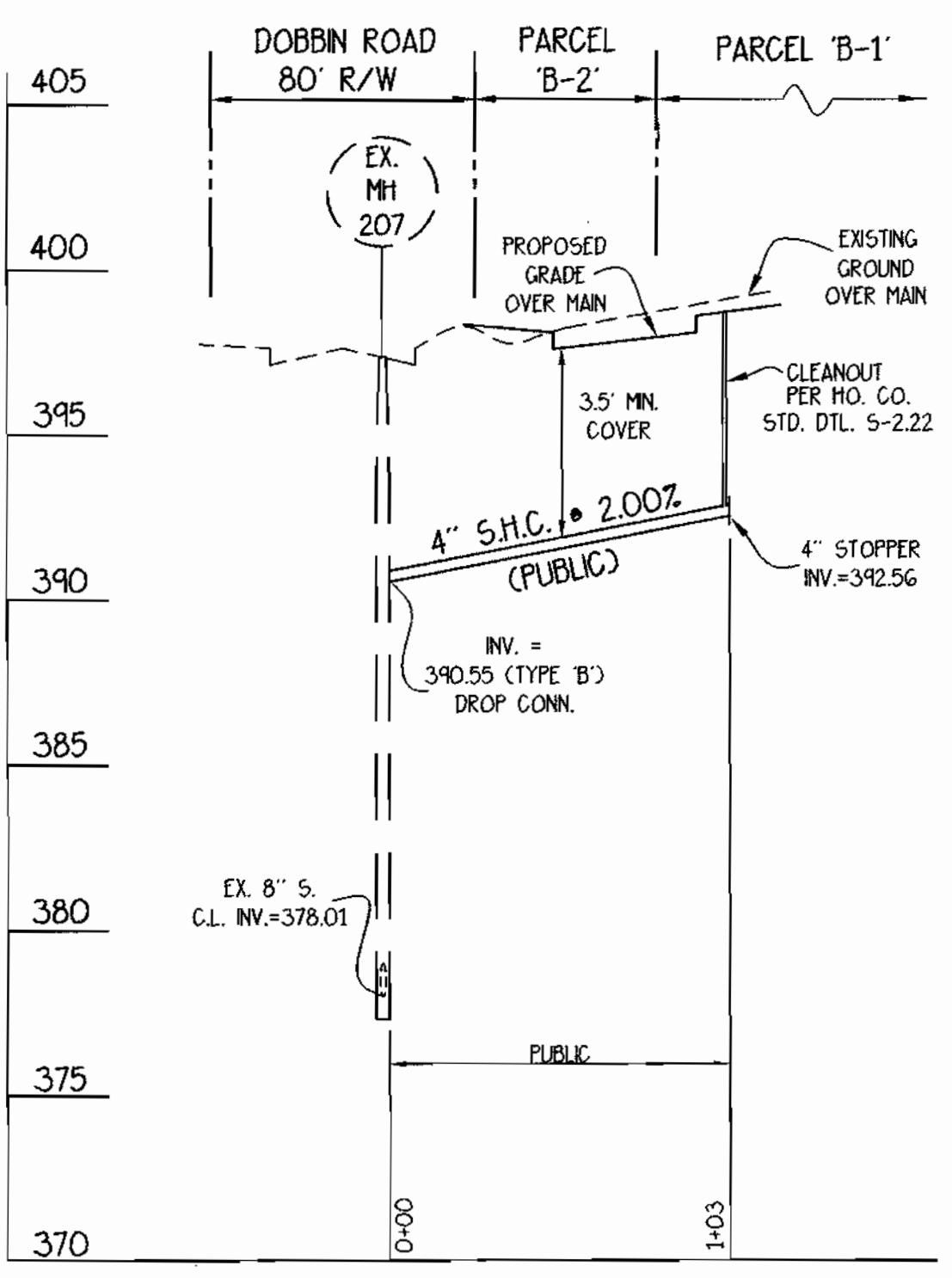
WATER PROFILE

MATCH LINE FOR CONTINUATION SEE THIS SHEET

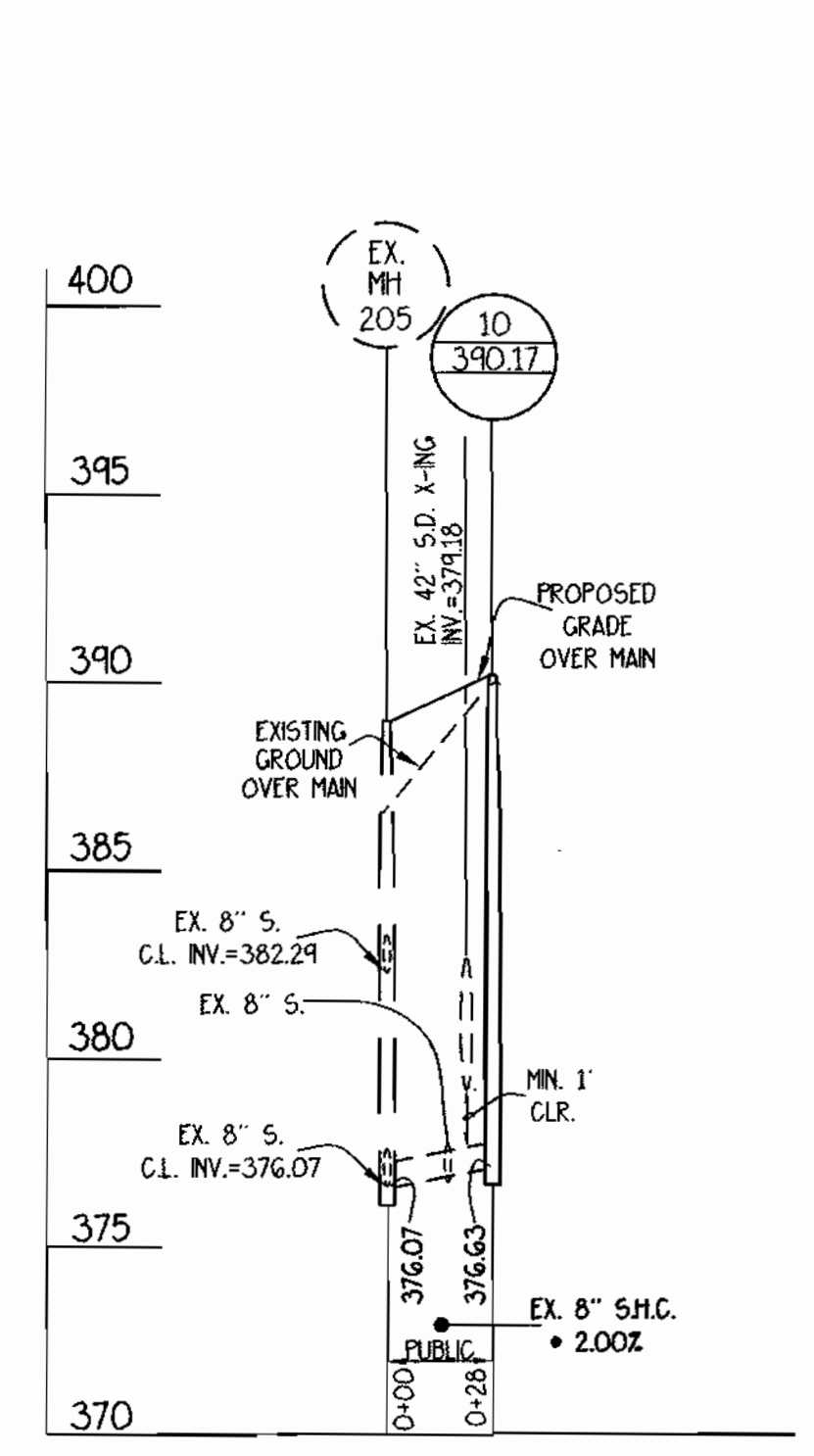


WATER PROFILE

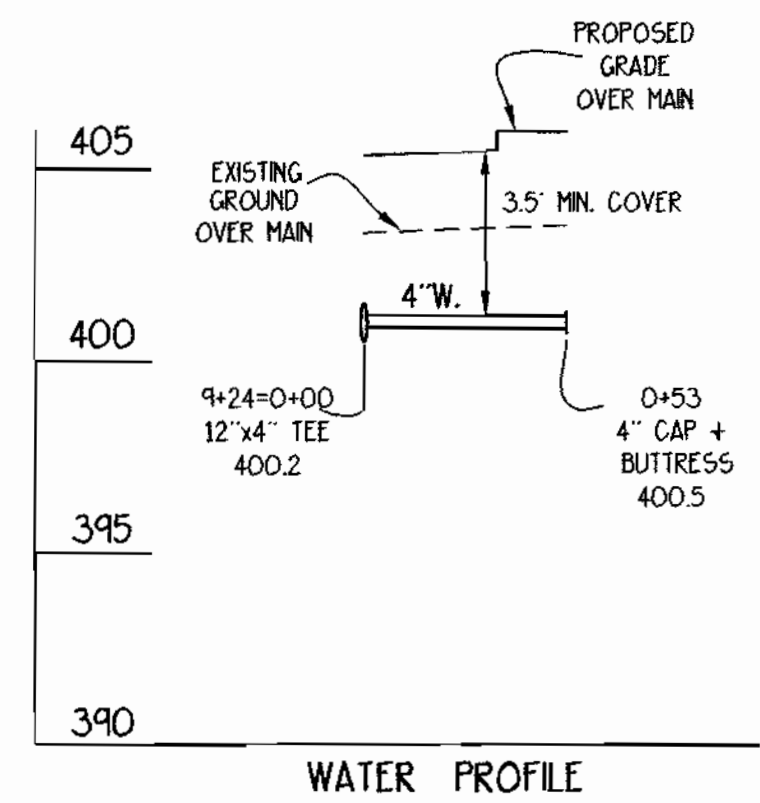
MATCH LINE FOR CONTINUATION SEE THIS SHEET



SEWER PROFILE



SEWER PROFILE



WATER PROFILE

FOR ALL PROFILES ON THIS SHEET
HORIZONTAL SCALE: 1" = 50'
VERTICAL SCALE: 1" = 5'

GLW FILE #02080
WATER + SEWER FINAL

DEPARTMENT OF PUBLIC WORKS HOWARD COUNTY, MARYLAND <i>10-31-02</i> <small>CHIEF, BUREAU OF UTILITIES</small>	DEPARTMENT OF PLANNING AND ZONING HOWARD COUNTY, MARYLAND <i>10/31/02</i> <small>CHIEF, DEVELOPMENT ENGINEERING DIVISION</small>	GLWGUTSCHICK LITTLE & WEBER, P.A. <small>CIVIL ENGINEERS, LAND SURVEYORS, LAND PLANNERS, LANDSCAPE ARCHITECTS 3908 NATIONAL DRIVE - SUITE 250 - BURTNSVILLE OFFICE PARK BURTNSVILLE, MARYLAND 20868 TEL: 301-421-4024 BAL: 410-880-1820 DC/VA: 301-989-2524 FAX: 301-421-4188</small>		DES: W6J DRN: W6J CHK: <i>W6J</i> DATE: OCT. 2002	WATER and SEWER EXTENSION PLAN 600' SCALE MAP NO. 36 BLOCK NO. 18	ROUTE 175 COMMERCIAL SECTION 1 AREA 2 PARCELS "B-1" + "B-2" PLAT No. CONTRACT No. 24-4082-D ELECTION DISTRICT No. 6 HOWARD COUNTY, MARYLAND	SCALE AS SHOWN SHEET 3 OF 3
---	---	---	--	--	---	--	------------------------------------