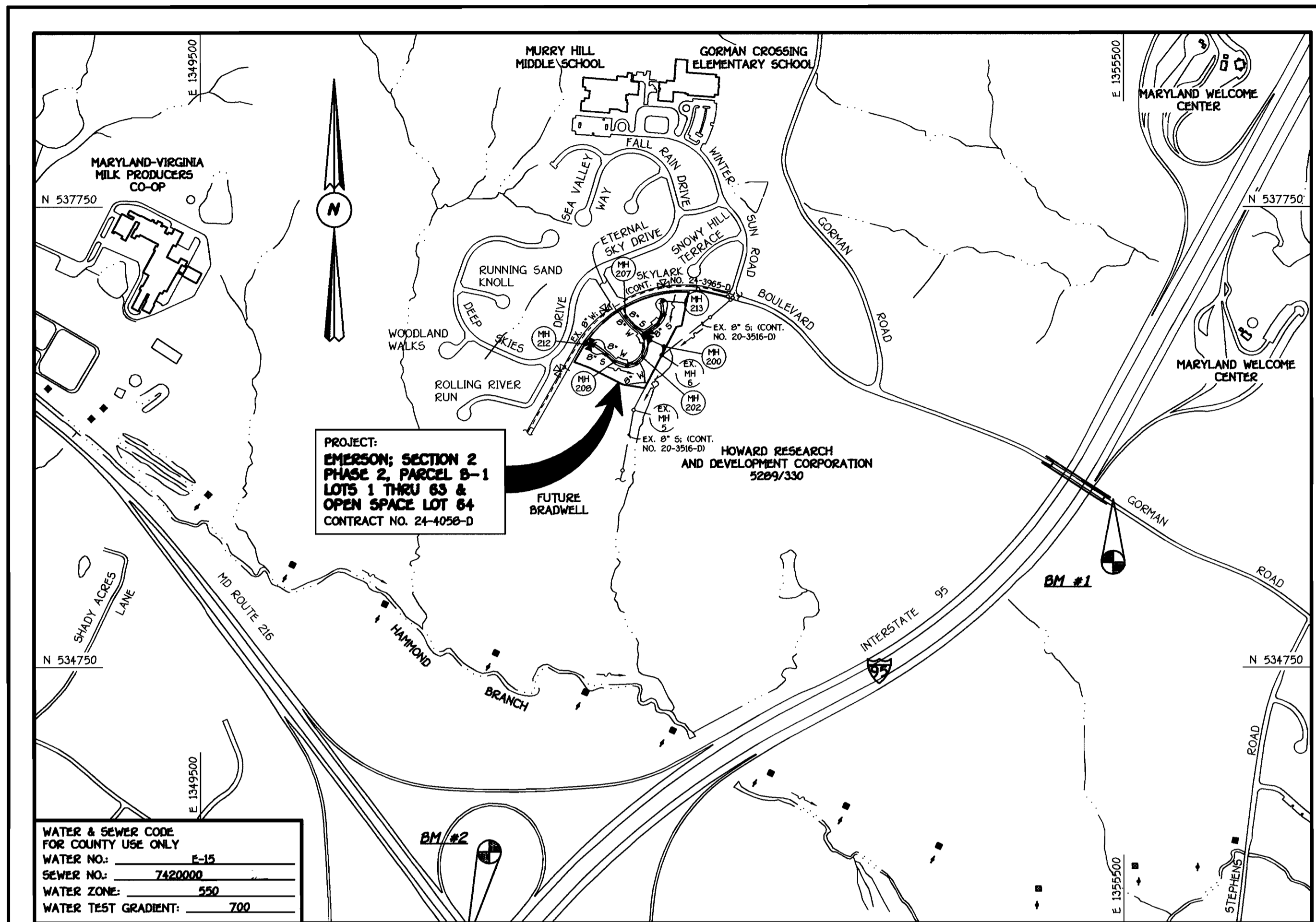


QUANTITIES				
ITEM	ESTIMATED	AS-BUILT		
		QUANTITIES	TYPE	SUPPLIER
8" WATER	1,071.81 LF.			
6" WATER	284.45 LF.			
1" WATER	1,787 LF.			
FIRE HYDRANTS	2 EACH			
8" X 8" TEE	3 EACH			
8" X 6" TEE	2 EACH			
8" VALVE	4 EACH			
6" VALVE	2 EACH			
6" 1/8 H.B.	3 EACH			
6" 1/16 H.B.	10 EACH			
6" 1/32 H.B.	2 EACH			
6" 1/8 H.B.	1 EACH			
8" PLUG & BUTTRESS	3 EACH			
6" PLUG & BUTTRESS	1 EACH			
8" X 6" REDUCER	1 EACH			
8" SEWER	1,056.67 LF.			
6" SEWER (D.I.P.)	96.39 LF.			
4" SEWER	1,573 LF.			
MANHOLES	14 EACH			
NAME OF UTILITY CONTRACTOR:				
SURVEY & DRAFTING DIVISION AS-BUILT DATE:				



WATER & SEWER CODE FOR COUNTY USE ONLY	E-15
WATER NO.	7420000
SEWER NO.	550
WATER ZONE	700
WATER TEST GRADIENT	

TYPE OF BUILDING: RESIDENTIAL TOWNHOUSES
NUMBER OF LOTS & PARCELS: 64 (63 BUILDABLE)
NO. OF WATER HOUSE CONNECTIONS: 63
NO. OF SEWER HOUSE CONNECTIONS: 63
DRAINAGE AREA: LITTLE PATUXENT
TREATMENT PLANT: LITTLE PATUXENT WATER RECLAMATION PLANT, SAVAGE, MD.

PLAN REFERENCE NUMBERS:
F03-63, SP02-12

VICINITY MAP
SCALE: 1"=600'

GENERAL NOTES

- PART I**
- APPROXIMATE LOCATIONS OF EXISTING MAINS ARE SHOWN. THE CONTRACTOR SHALL TAKE ALL NECESSARY PRECAUTIONS TO PROTECT EXISTING MAINS AND SERVICES AND MAINTAIN UNINTERRUPTED SERVICE. ANY DAMAGE INCURRED SHALL BE REPAIRED IMMEDIATELY TO THE SATISFACTION OF THE ENGINEER AT THE CONTRACTOR'S EXPENSE.
 - ALL HORIZONTAL CONTROLS ARE BASED ON MARYLAND STATE COORDINATES, NAD 83/91.
 - ALL VERTICAL CONTROLS ARE BASED ON NAVD 83.
 - ALL PIPE ELEVATIONS SHOWN ARE INVERT ELEVATIONS UNLESS OTHERWISE NOTED ON THE PLANS.
 - CLEAR ALL UTILITIES BY A MINIMUM OF 12 INCHES. CLEAR ALL POLES BY 5'-0" MINIMUM OR TUNNEL AS REQUIRED UNLESS OTHERWISE NOTED. THE OWNER HAS CONTACTED THE UTILITY COMPANIES AND HAS MADE ARRANGEMENTS FOR BRACING OF POLES AS SHOWN ON THE DRAWINGS. IN THE EVENT THE CONTRACTOR'S WORK REQUIRES BRACING OF ADDITIONAL POLES, ANY COST INCURRED BY THE OWNER FOR THE BRACING OF THE ADDITIONAL POLES OR DAMAGES SHALL BE DEDUCTED FROM MONIES OWED THE CONTRACTOR. THE CONTRACTOR SHALL COORDINATE WITH THE UTILITY COMPANIES TO SCHEDULE THE BRACING OF THE POLES.
 - FOR DETAILS NOT SHOWN ON THE DRAWINGS, AND FOR MATERIALS AND CONSTRUCTION METHODS, USE HOWARD COUNTY DESIGN MANUAL, VOLUME IV, STANDARD SPECIFICATIONS AND DETAILS FOR CONSTRUCTION (LATEST EDITION). THE CONTRACTOR SHALL HAVE A COPY OF VOLUME IV ON THE JOB SITE.
 - WHERE TEST PITS HAVE BEEN MADE ON EXISTING UTILITIES, THEY ARE NOTED BY THE SYMBOL @ AT THE LOCATIONS OF THE TEST PITS. A NOTE OR NOTES CONTAINING THE RESULTS OF THE TEST PIT OR PITS IS INCLUDED ON THE DRAWINGS. EXISTING UTILITIES IN THE VICINITY OF THE PROPOSED WORK FOR WHICH TEST PITS HAVE NOT BEEN DUG SHALL BE LOCATED BY THE CONTRACTOR TWO WEEKS IN ADVANCE OF CONSTRUCTION OPERATIONS AT HIS OWN EXPENSE.
 - THE CONTRACTOR SHALL NOTIFY THE FOLLOWING UTILITY COMPANIES OR AGENCIES AT LEAST FIVE WORKING DAYS BEFORE STARTING WORK SHOWN ON THESE PLANS:
 - AT&T 1-800-252-1133
 - BGE (CONTRACTOR SERVICES) 410-850-4620
 - BGE (UNDERGROUND DAMAGE CONTROL) 410-787-9066
 - BUREAU OF UTILITIES 410-313-4900
 - COLONIAL PIPELINE CO 410-795-1390
 - MISS UTILITY 1-800-297-7777
 - MISS UTILITY 410-531-5533
 - STATE HIGHWAY ADMINISTRATION 1-800-743-0033/410-224-9210
 - TREES AND SHRUBS ARE TO BE PROTECTED FROM DAMAGE TO THE MAXIMUM EXTENT. TREES AND SHRUBS LOCATED WITHIN THE CONSTRUCTION STRIP ARE NOT TO BE REMOVED OR DAMAGED BY THE CONTRACTOR.
 - CONTRACTOR SHALL REMOVE TREES, STUMPS AND ROOTS ALONG THE LINE OF EXCAVATION. PAYMENT FOR SUCH REMOVAL SHALL BE INCLUDED IN THE UNIT PRICE BID FOR THE CONSTRUCTION OF THE MAIN.
 - THE CONTRACTOR SHALL NOTIFY THE BUREAU OF HIGHWAYS, HOWARD COUNTY, AT (410)-313-7450 AT LEAST FIVE WORKING DAYS BEFORE OPEN CUTTING OR BORING/JACKING OF ANY COUNTY ROAD FOR LAYING WATER/SEWER MAINS OR HOUSE CONNECTIONS. THE APPROVAL OF THESE DRAWINGS WILL CONSTITUTE COMPLIANCE WITH DPW REQUIREMENTS PER SECTION 18.14(a) OF THE HOWARD COUNTY CODE.
- PART II: WATER**
- ALL WATER MAINS SHALL BE D.I.P. CLASS 52 UNLESS OTHERWISE NOTED.
 - TOPS OF ALL WATER MAINS SHALL HAVE A MINIMUM OF 3'-6" OF COVER UNLESS OTHERWISE NOTED.
 - VALVES ADJACENT TO TREES SHALL BE STRAPPED TO TREES.
 - ALL FITTINGS SHALL BE BUTTRESSED OR ANCHORED WITH CONCRETE IN ACCORDANCE WITH STANDARD DETAILS UNLESS OTHERWISE PROVIDED FOR ON THE DRAWINGS.
 - FIRE HYDRANTS SHALL BE SET TO THE BURY LINE ELEVATIONS SHOWN ON THE DRAWINGS. ALL FIRE HYDRANTS SHALL BE INSTALLED IN ACCORDANCE WITH STANDARD DETAILS. THE SOIL AROUND THE FIRE HYDRANT SHALL BE COMPACTED IN ACCORDANCE WITH SECTION 1000 AND SECTION 1005 OF THE STANDARD SPECIFICATIONS.
 - THE CONTRACTOR SHALL NOT OPERATE ANY WATER MAIN VALVES ON THE EXISTING WATER SYSTEM.
- PART III: SEWER**
- ALL SEWER MAINS SHALL BE D.I.P. OR P.V.C. UNLESS OTHERWISE NOTED.
 - ALL MANHOLES SHALL BE 4'-0" INSIDE DIAMETER UNLESS OTHERWISE NOTED.
 - FORCE MAINS SHALL BE D.I.P. ONLY.
 - MANHOLES SHOWN WITH 12" AND 18" WALLS ARE FOR BIGCK MANHOLES ONLY.
 - MANHOLES DESIGNATED W.T. IN PLAN AND PROFILE SHALL HAVE WATER-TIGHT FRAME AND COVER, STANDARD DETAIL G5.92. WHERE WATER-TIGHT MANHOLE FRAMES AND COVERS ARE USED, SET TOP OF FRAME 1'-6" ABOVE FINISHED GRADE UNLESS OTHERWISE NOTED ON THE DRAWINGS.
 - HOUSES WITH THE SYMBOL "C.N.S." INDICATES THAT THE CELLAR CANNOT BE SERVED.

BENCHMARK INFORMATION	
B.M. #1 - HOWARD COUNTY CONTROL STATION 47C4	N 535,846.149 E 1,355,431.22 ELEV. = 338.923'
B.M. #2 - HOWARD COUNTY CONTROL STATION 47G2	N 532,986.987 E 1,351,224.12 ELEV. = 364.228'

DEVELOPER'S CERTIFICATION
I HEREBY CERTIFY THAT ALL DEVELOPMENT AND CONSTRUCTION WILL BE DONE ACCORDING TO THIS PLAN OF DEVELOPMENT AND PLAN FOR EROSION AND SEDIMENT CONTROL AND THAT ALL RESPONSIBLE PERSONNEL INVOLVED IN THE CONSTRUCTION PROJECT WILL HAVE A CERTIFICATE OF ATTENDANCE AT THE DEPARTMENT OF THE ENVIRONMENT TRAINING PROGRAM FOR THE CONTROL OF EROSION AND SEDIMENT BEFORE BEGINNING THE PROJECT. I ALSO AUTHORIZE PERIODIC ON-SITE INSPECTION BY THE HOWARD SOIL CONSERVATION DISTRICT OR THEIR AUTHORIZED AGENTS, AS ARE DEEMED NECESSARY.

Paul W. Kaudel FOR: 03-13-03
SIGNATURE OF DEVELOPER DATE

Ryland Homes
SIGNATURE OF DEVELOPER

ENGINEER'S CERTIFICATION
I HEREBY CERTIFY THAT THIS PLAN FOR EROSION AND SEDIMENT CONTROL REPRESENTS A PRACTICAL AND WORKABLE PLAN BASED ON MY PERSONAL KNOWLEDGE OF THE SITE CONDITIONS AND THAT IT WAS PREPARED IN ACCORDANCE WITH THE REQUIREMENTS OF THE HOWARD SOIL CONSERVATION DISTRICT.

Paul W. Kaudel 03/14/03
SIGNATURE OF ENGINEER DATE

REVIEWED FOR HOWARD COUNTY SOIL CONSERVATION DISTRICT AND MEETS TECHNICAL REQUIREMENTS.

Jim Meyer 3/24/03
U.S.D.A. NATURAL RESOURCES CONSERVATION SERVICE DATE

THIS DEVELOPMENT IS APPROVED FOR EROSION AND SEDIMENT CONTROL BY HOWARD SOIL CONSERVATION DISTRICT.

APPROVED: John R. Robertson 3/24/03
HOWARD SOIL CONSERVATION DISTRICT DATE

SEDDIMENT CONTROL MEASURES FOR THIS CONTRACT WILL BE IMPLEMENTED IN ACCORDANCE WITH SECTION 219 OF THE HOWARD COUNTY DESIGN MANUAL & STANDARDS AND SPECIFICATIONS FOR SOIL EROSION AND SEDIMENT CONTROL IN DEVELOPING AREAS AND AS SHOWN ON F03-63.

Paul W. Kaudel FOR: 03/13/03
Ryland Homes
SIGNATURE OF DEVELOPER DATE

CONTRACT NO. 24-4058-D

EMERSON

SECTION 2, PHASE 2, PARCEL B-1

LOTS 1 THRU 63 AND OPEN SPACE LOT 64

WATER AND SEWER MAIN EXTENSIONS

HOWARD COUNTY, MARYLAND

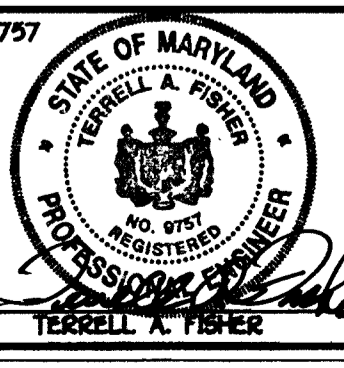
DEPARTMENT OF PUBLIC WORKS
HOWARD COUNTY, MARYLAND

Robert Berman 3-19-03
CHIEF, BUREAU OF UTILITIES DATE

DEPARTMENT OF PLANNING AND ZONING
HOWARD COUNTY, MARYLAND

Paul D. ... 4/1/03
CHIEF, DEVELOPMENT ENGINEERING DIVISION DATE

FISHER, COLLINS & CARTER, INC.
CIVIL ENGINEERING CONSULTANTS & LAND SURVEYORS
CENTRAL SQUARE OFFICE PARK - 10277 BALTIMORE NATIONAL PIKE
ELLSWORTH CITY, MARYLAND 21117
(410) 401 - 2999



DESIGNED BY:	M.D.T.
DRAWN BY:	M.D.T.
CHECKED BY:	P.W.L.
DATE:	MARCH 2003
BY NO.	
REVISION	
DATE	
FILE NAME:	FINAL WATER AND SEWER MAINS TITLE SHEET

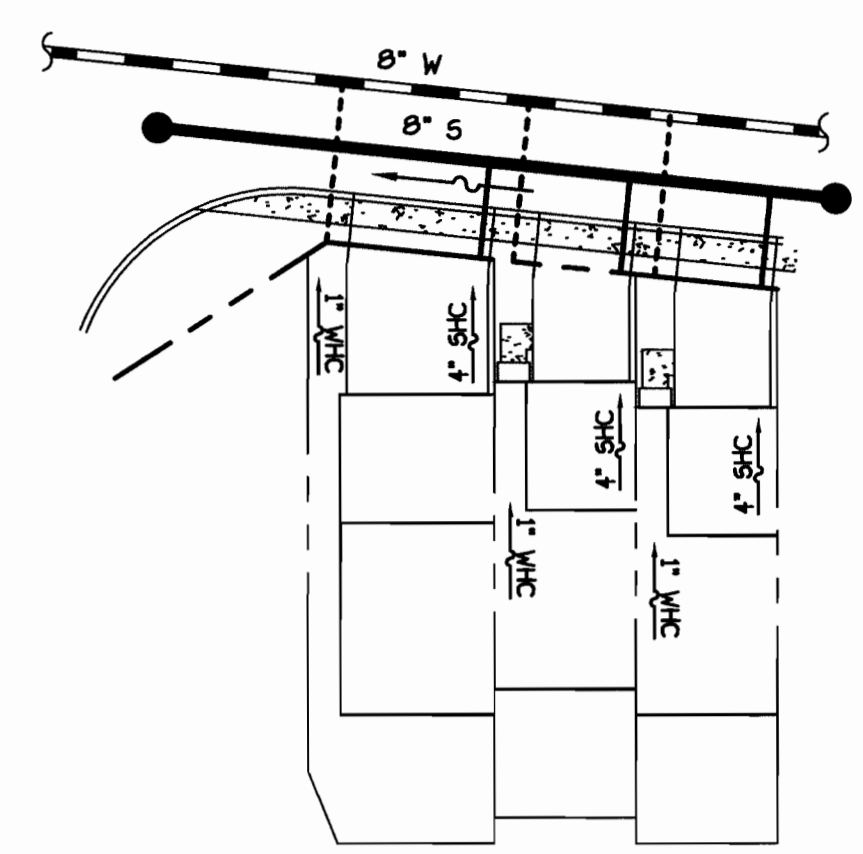
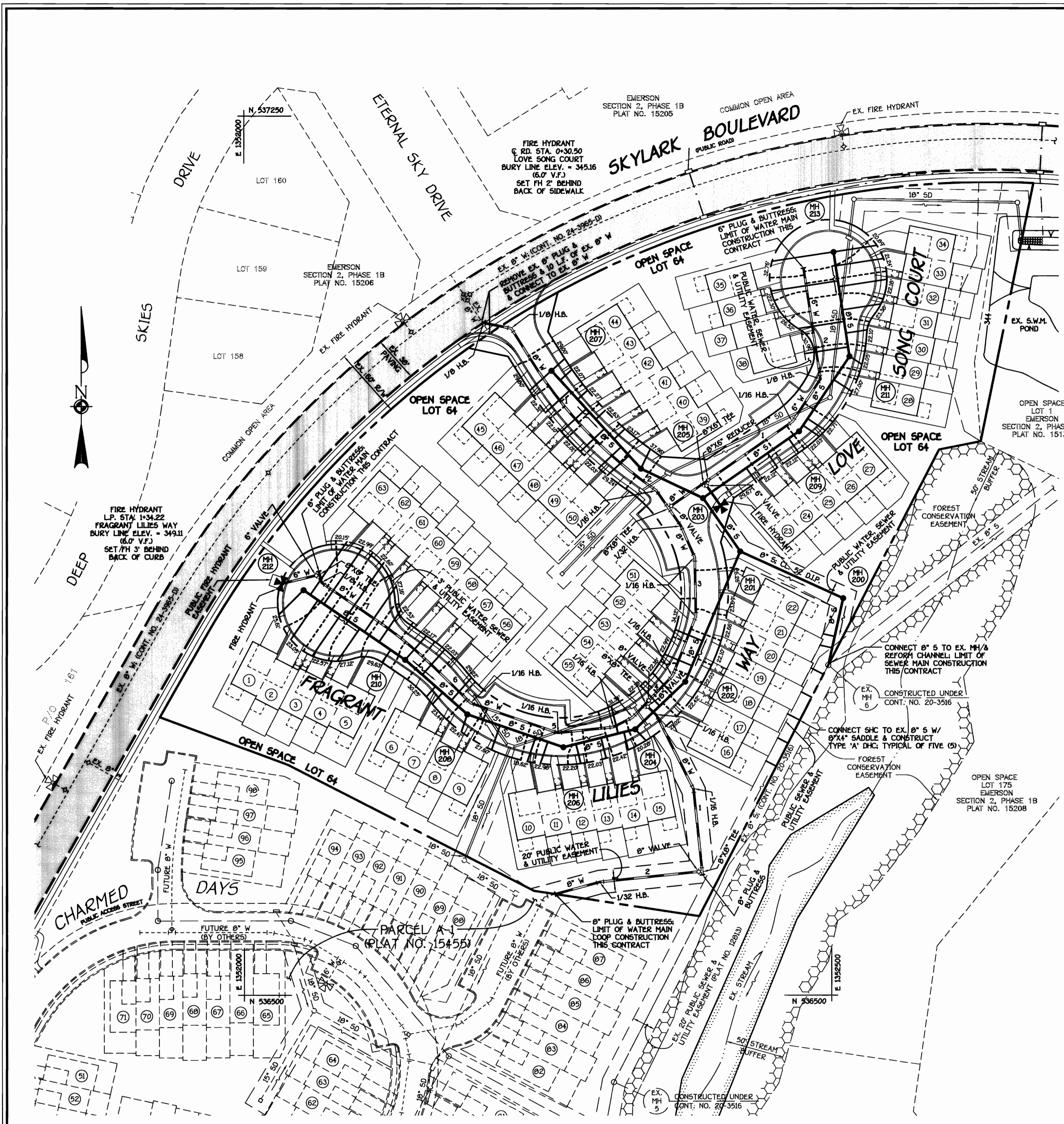
WATER AND SEWER MAINS
TITLE SHEET

800' SCALE MAP NO. 47 BLOCK NO. 8
F.C.C. WORK ORDER NO. 40367

EMERSON
SECTION 2, PHASE 2, PARCEL B-1,
LOTS 1 THRU 63 & OPEN SPACE LOT 64
CONTRACT NO. 24-4058-D
SIXTH ELECTION DISTRICT
HOWARD COUNTY, MARYLAND

SCALE AS SHOWN
SHEET 1 of 4

CONTRACT NO. 24-4058-D
EMERSON
SECTION 2, PHASE 2, PARCEL B-1,
LOTS 1 THRU 63 & OPEN SPACE LOT 64
WATER AND SEWER MAIN EXTENSIONS
HOWARD COUNTY, MARYLAND



NOTE: CURB SERVICE BOXES LOCATED WITHIN DRIVEWAYS SHALL BE CAST IRON WITH CAST IRON COVERS.

TYPICAL WHC & SHC DETAIL @ TOWNHOUSE UNITS
NO SCALE

W.M. STATION	APPURTENANCE	ROAD STATION	DISTANCE
FRAGRANT LILIES WAY			
0+00.00	CONNECT TO EX. 8" W W/ 1/8" H.B.	0+19.34	23.20' RT.
0+25.00	1/8" H.B.	0+36.48	5.00' RT.
0+56.24	P.C. (CRMP RADIUS = 380')	0+67.73	5.00' RT.
2+04.97	P.T. (CRMP RADIUS = 380')	2+15.24	5.50' RT.
2+11.62	1/16" H.B.	2+22.12	4.71' RT.
2+29.95	8" X 8" TEE	2+41.23	6.89' RT.
2+48.44	1/32" H.B.	2+60.75	6.23' RT.
2+78.19	1/16" H.B.	2+91.94	4.97' RT.
3+28.19	1/16" H.B.	3+44.56	5.74' RT.
3+82.90	1/16" H.B.	4+01.82	4.72' RT.
4+13.53	8" VALVE	4+33.94	6.00' RT.
4+16.53	8" X 8" TEE	4+37.08	5.68' RT.
4+32.12	1/16" H.B.	4+52.98	2.81' RT.
4+50.25	1/16" H.B.	4+71.58	3.03' RT.
4+97.76	1/16" H.B.	5+21.37	7.18' RT.
5+76.22	1/16" H.B.	6+05.39	4.18' RT.
6+18.51	P.C. (CRMP RADIUS = 380')	6+47.92	2.38' RT.
6+84.04	P.T. (CRMP RADIUS = 380')	7+12.86	7.00' RT.
7+40.00	1/8" H.B.	L.P. STA. 1+61.23	23.78' RT.
7+47.00	8" X 6" TEE	L.P. STA. 1+65.61	17.18' RT.
7+50.00	8" PLUG & BUTTRESS	L.P. STA. 1+66.91	14.30' RT.
LOVE SONG COURT			
0+00.00	8" X 8" TEE	-0.07.00	5.00' LT.
0+03.00	8" VALVE	-0+04.00	5.00' LT.
0+37.50	8" X 6" TEE	0+30.50	5.00' LT.
0+40.50	8" X 6" REDUCER	0+33.50	5.00' LT.
1+28.91	1/16" H.B.	1+22.27	4.71' LT.
1+72.42	1/8" H.B.	1+68.79	8.93' LT.
2+68.00	6" PLUG & BUTTRESS	L.P. STA. 1+06.10	17.16' LT.
LOOP TO PARCEL 'A-1'			
0+00.00	8" X 8" TEE	4+37.08	5.68' RT.
0+03.00	8" VALVE	4+36.71	2.70' RT.
0+13.31	1/16" H.B.	4+35.60	7.55' LT.
NORTHING EASTING			
0+83.75	1/16" H.B.	536676.00	1352382.36
1+54.42	8" X 8" TEE	536605.71	1352389.69
1+57.42	8" VALVE	536605.40	1352386.71
2+41.82	1/32" H.B.	536596.65	1352382.78
2+81.31	8" PLUG & BUTTRESS	536586.30	1352284.66

STATION	LOT	ELEVATION
EX. MH 5 TO EX. MH 6		
3+03 LT.	16	326.70
3+25 LT.	17	327.70
3+47 LT.	18	327.70
3+69 LT.	19	327.70
3+91 LT.	20	327.70
EX. MH 6 TO EX. MH 200		
0+15 LT.	21	327.22
0+25 LT.	22	327.76
MH 201 TO MH 202		
0+83 RT.	51	333.79
1+06 RT.	52	334.02
MH 202 TO MH 204		
0+15 RT.	53	334.45
0+30 RT.	54	334.50
0 MH 204 LT.	15	334.79
MH 204 TO MH 206		
0+10 LT.	14	335.09
0+15 LT.	55	335.48
0+30 LT.	13	335.98
0+52 LT.	12	336.90
MH 206 TO MH 208		
0+14 LT.	11	337.70
0+25 LT.	10	337.80
0+57 LT.	9	337.96
0 MH 208 LT.	8	338.33
MH 208 TO MH 210		
0+18 RT.	56	338.55
0+28 LT.	7	338.41
0+36 LT.	6	338.47
0+51 RT.	57	339.97
0 MH 210 RT.	58	339.48
MH 210 TO MH 212		
0+15 LT.	5	339.45
0+27 RT.	59	340.18
0+42 RT.	60	340.90
0+47 LT.	4	340.73
0+62 RT.	61	341.69
0+67 LT.	3	341.46
0+84 RT.	62	342.27
0+90 LT.	2	342.06
0+98 RT.	63	342.58
0 MH 212 LT.	1	342.41
MH 203 TO MH 209		
0+45 RT.	23	335.85
0+67 RT.	24	336.07
0+89 RT.	25	336.29
MH 209 TO MH 211		
0+06 RT.	26	336.70
0+13 RT.	27	336.81
0+53 RT.	28	337.23
0 MH 211 RT.	29	337.89
MH 211 TO MH 213		
0+08 LT.	38	336.07
0+20 RT.	30	337.77
0+30 LT.	37	338.29
0+40 RT.	31	338.22
0+60 RT.	32	338.52
0+65 LT.	36	338.88
0+78 RT.	33	338.65
0 MH 213 LT.	35	339.14
0 MH 213 RT.	34	338.84
MH 205 TO MH 205		
0 MH 205 RT.	39	337.81
MH 205 TO MH 207		
0+15 LT.	50	338.17
0+25 LT.	49	338.45
0+34 RT.	40	338.42
0+46 LT.	48	339.02
0+57 RT.	41	338.96
0+69 LT.	47	339.61
0+80 RT.	42	339.55
0+90 LT.	46	340.15
1+02 RT.	43	340.17
0 MH 207 LT.	45	340.83
0 MH 207 RT.	44	340.65

SEE SHEET 4 OF 4 FOR TOWNHOUSE M.C.E. CHART
SEE SHEET 4 OF 4 FOR MANHOLE TABULATION CHART
SEE SHEETS 3 & 4 OF 4 FOR WATER & SEWER MAINS PROFILES

PLAN
SCALE: 1" = 50'

CONTRACT NO. 24-4058-D
EMERSON
SECTION 2, PHASE 2, PARCEL B-1,
LOTS 1 THRU 63 & OPEN SPACE LOT 64
WATER AND SEWER MAIN EXTENSIONS
HOWARD COUNTY, MARYLAND

DEPARTMENT OF PUBLIC WORKS
HOWARD COUNTY, MARYLAND

3-19-03
DATE

DEPARTMENT OF PLANNING AND ZONING
HOWARD COUNTY, MARYLAND

4/3/03
DATE

FISHER, COLLINS & CARTER, INC.
CIVIL ENGINEERING CONSULTANTS & LAND SURVEYORS
1801 461 - 2955

STATE OF MARYLAND
TERRELL A. FISHER
REGISTERED PROFESSIONAL ENGINEER

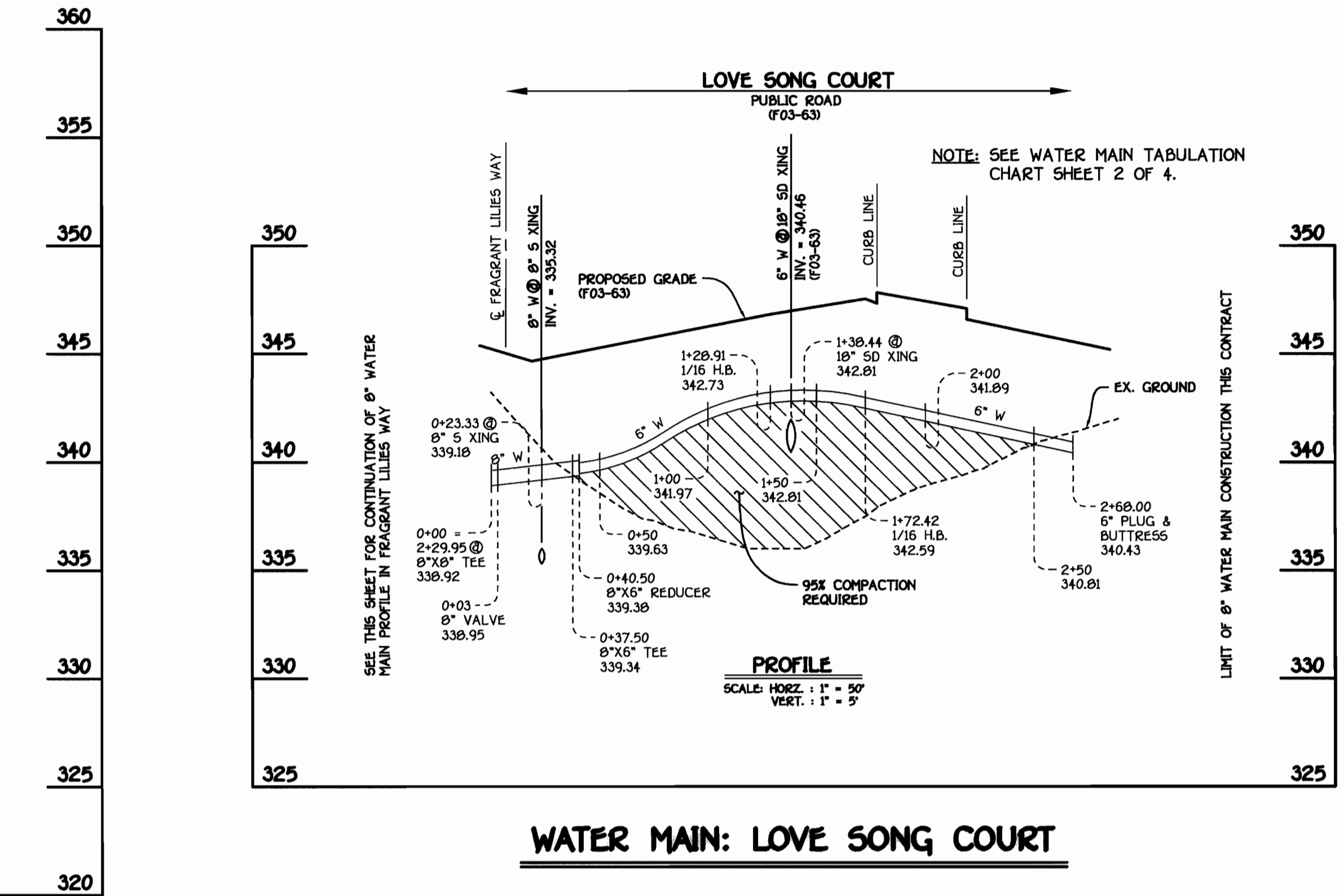
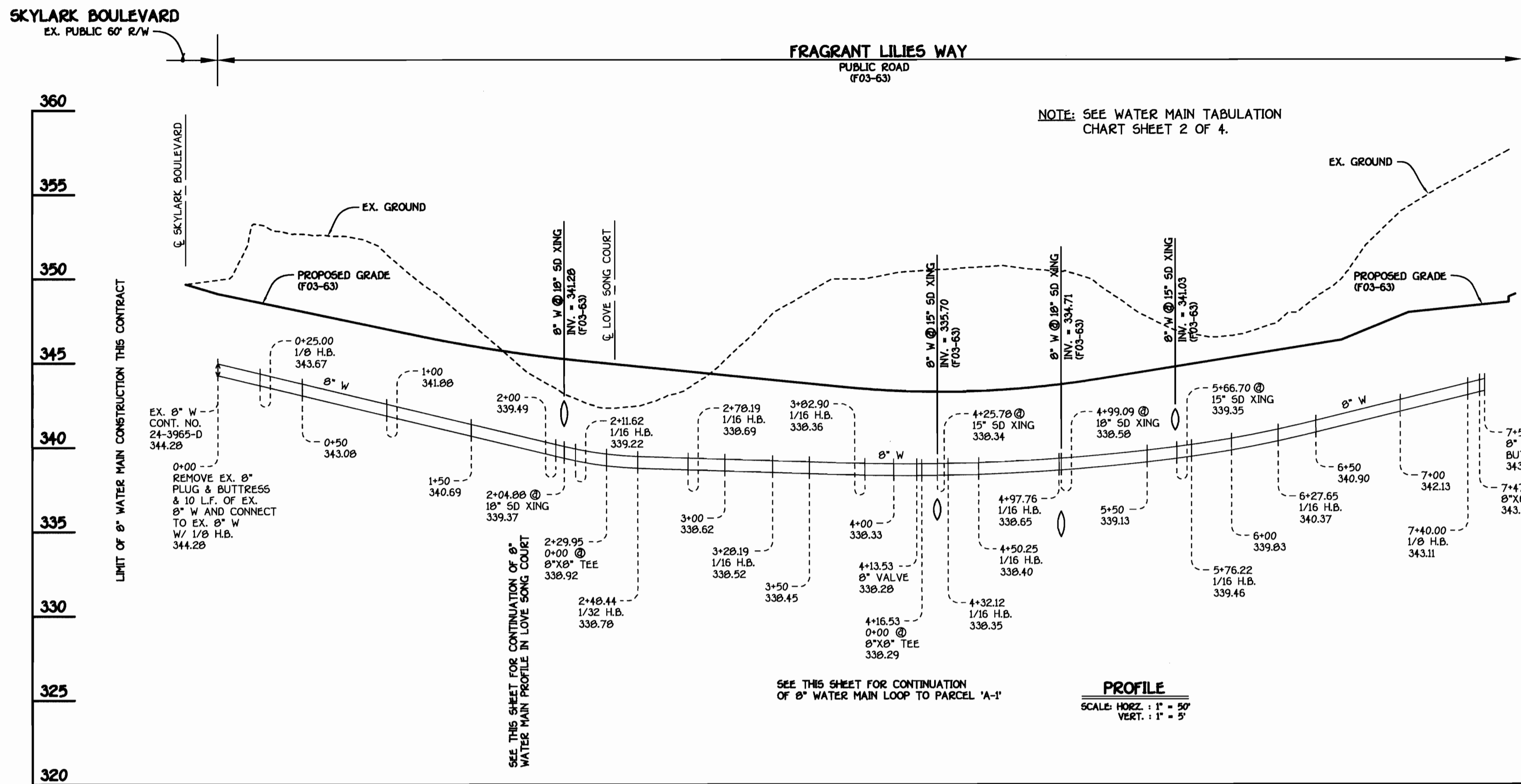
DESIGNED BY: H.D.T.
DRAWN BY: H.D.T.
CHECKED BY: P.M.K.
DATE: MARCH, 2003

WATER AND SEWER MAINS
PLAN VIEW

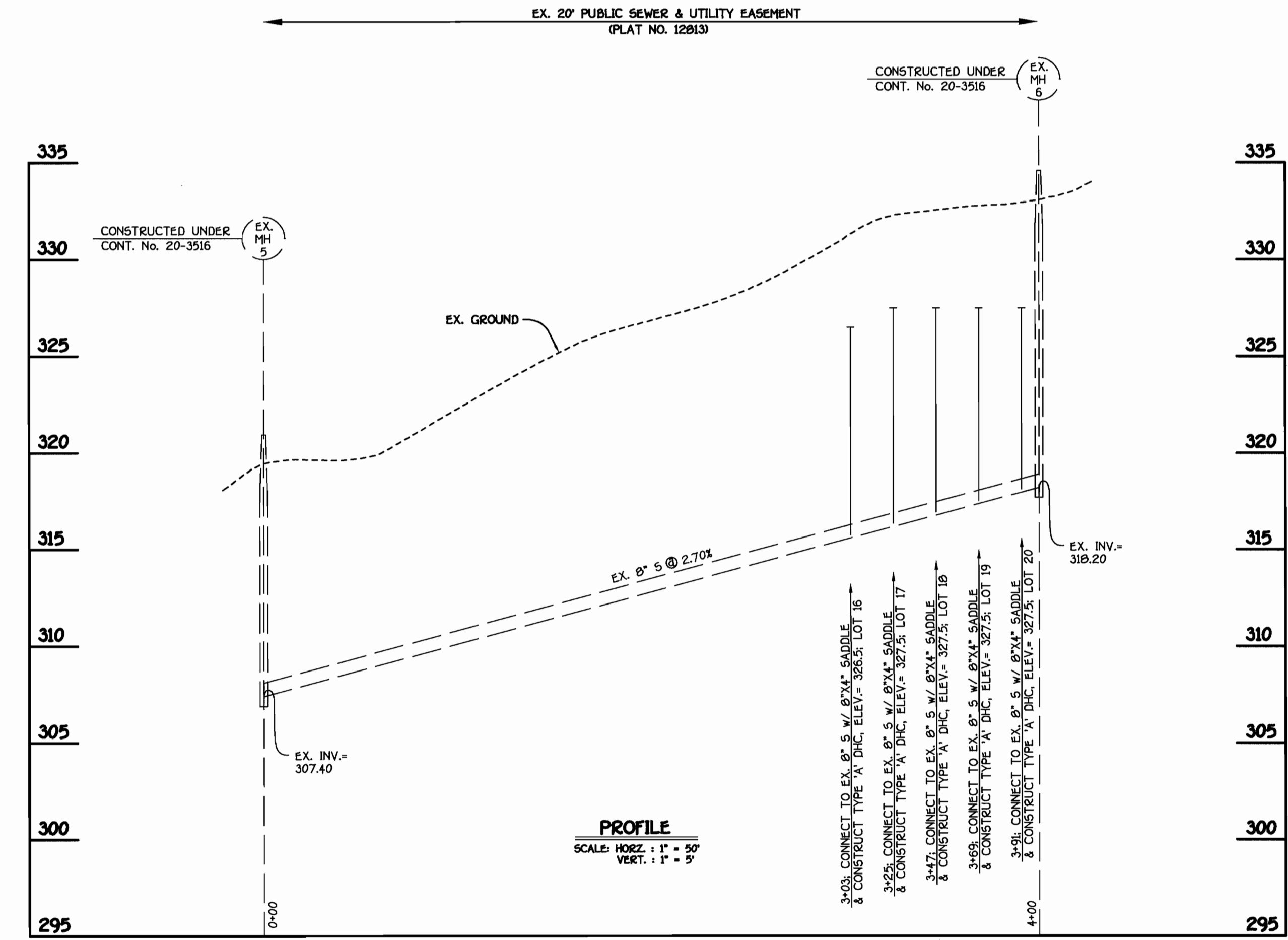
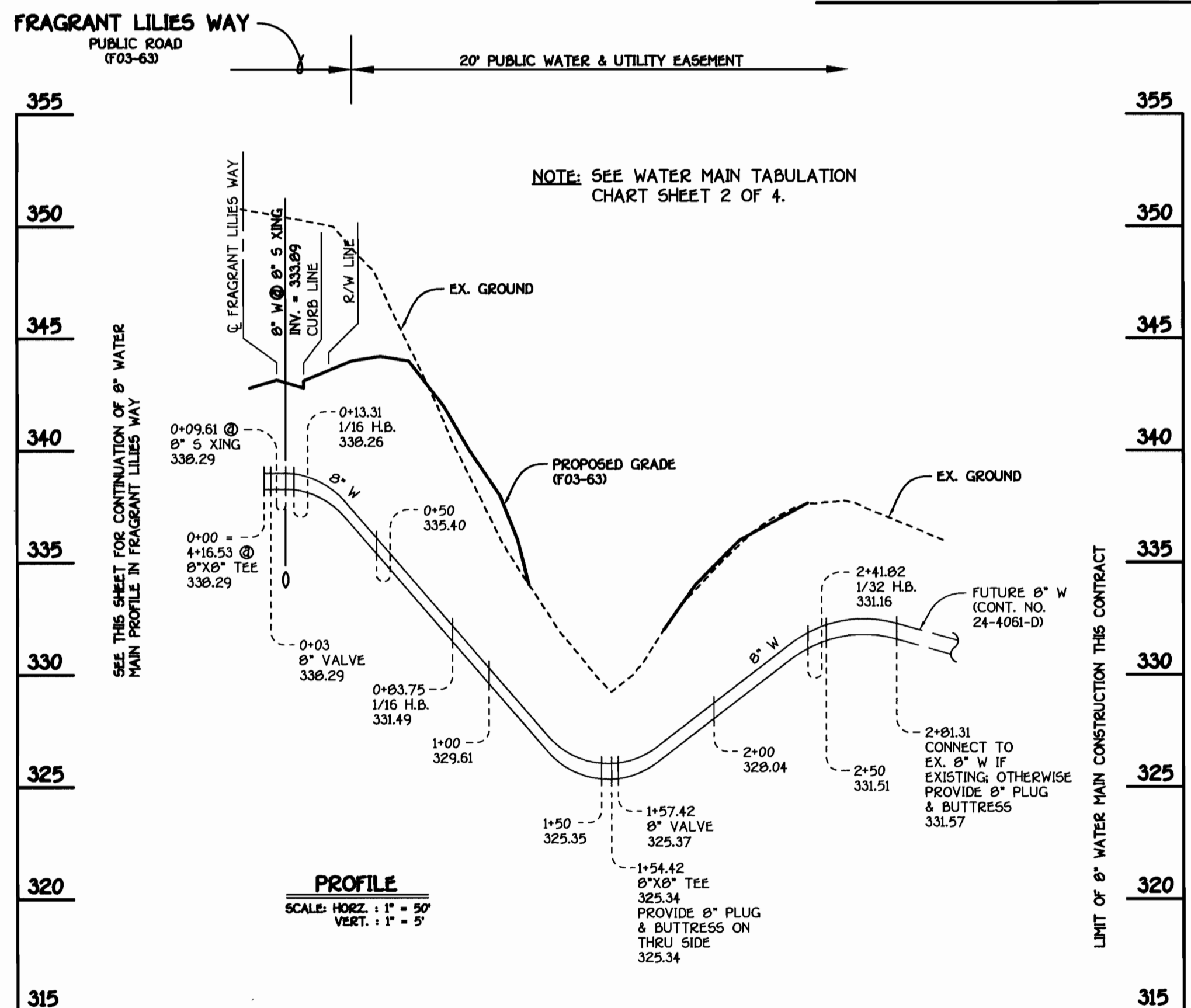
600' SCALE MAP NO. 47 BLOCK NO. 8
F.C.C. WORK ORDER NO. 49367
FILE NAME: FINAL WATER AND SEWER MAINS PLAN SHT 2

EMERSON
SECTION 2, PHASE 2, PARCEL B-1,
LOTS 1 THRU 63 & OPEN SPACE LOT 64
CONTRACT NO. 24-4058-D
SIXTH ELECTION DISTRICT
HOWARD COUNTY, MARYLAND

AS SHOWN
SHEET 2 of 4



WATER MAIN: FRAGRANT LILIES WAY



WATER MAIN: LOOP TO PARCEL 'A-1'

DHCs & EX. 8" SEWER MAIN: LOTS 16 THRU 20

CONTRACT NO. 24-4058-D
SECTION 2; PHASE 2; PARCEL B-1,
LOTS 1 THRU 63 & OPEN SPACE LOT 64
WATER AND SEWER MAIN EXTENSIONS
HOWARD COUNTY, MARYLAND

DEPARTMENT OF PUBLIC WORKS
HOWARD COUNTY, MARYLAND
3-19-03
DATE

DEPARTMENT OF PLANNING AND ZONING
HOWARD COUNTY, MARYLAND
4/1/03
DATE

FISHER, COLLINS & CARTER, INC.
CIVIL ENGINEERING CONSULTANTS & LAND SURVEYORS
TERRELL A. FISHER

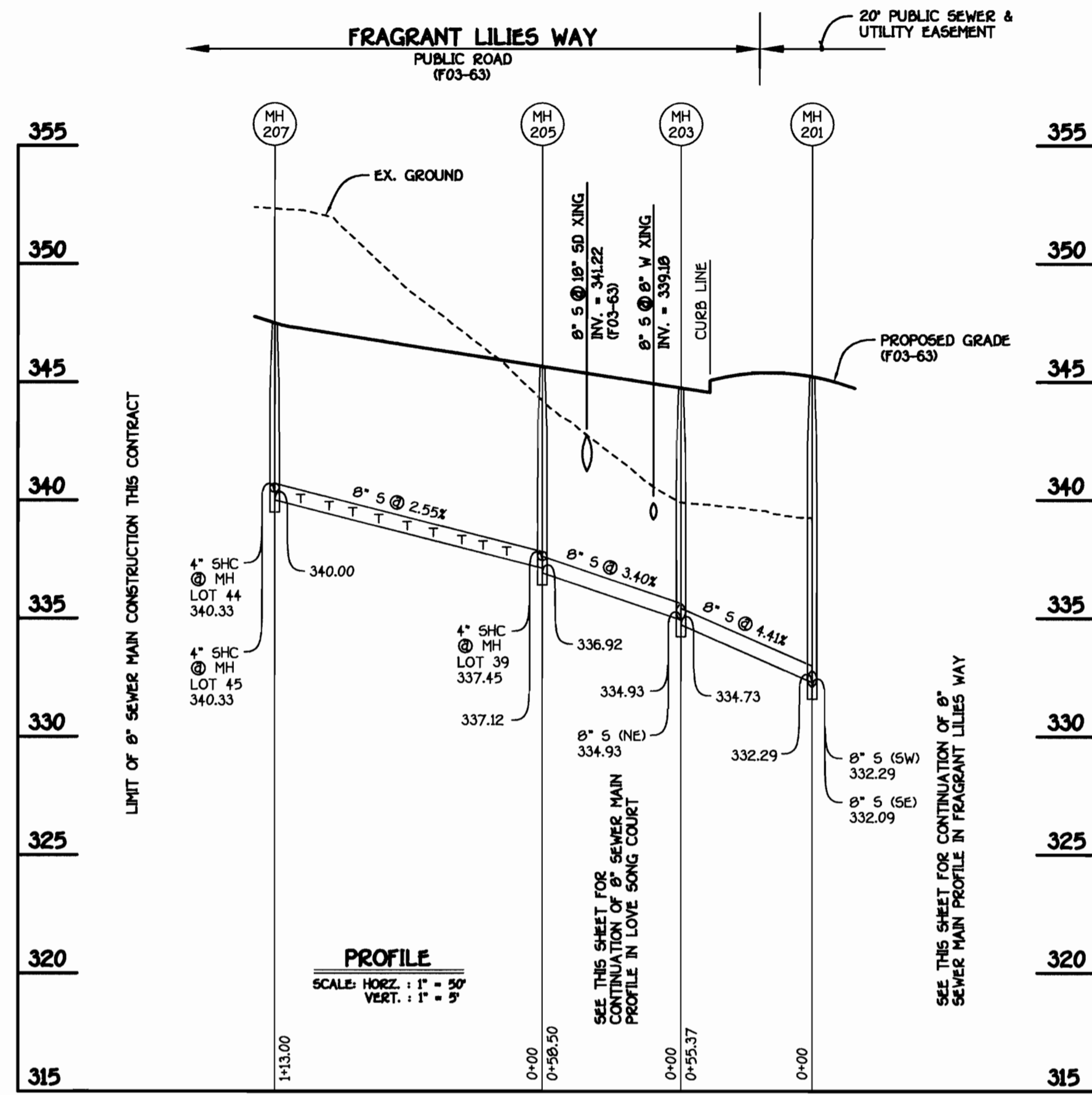


DESIGNED BY: M.D.T.
DRAWN BY: M.D.T.
CHECKED BY: P.W.K.
DATE: MARCH 2003

WATER AND SEWER MAINS
PROFILES
60' SCALE MAP NO. 47 BLOCK NO. B
F.C.C. WORK ORDER NO. 40367

EMERSON
SECTION 2; PHASE 2; PARCEL B-1,
LOTS 1 THRU 63 & OPEN SPACE LOT 64
CONTRACT NO. 24-4058-D
SIXTH ELECTION DISTRICT
HOWARD COUNTY, MARYLAND

SCALE AS SHOWN
SHEET 3 OF 4



M.C.E. CHART	
LOT	M.C.E.
FRAGRANT LILIES WAY	
1	346.81
2	346.46
3	345.86
4	345.13
5	343.85
6	342.87
7	342.81
8	342.73
9	342.36
10	342.20
11	342.10
12	341.20
13	340.38
14	339.49
15	339.19
16	338.10
17	332.10
18	332.10
19	332.10
20	332.10
21	331.62
22	332.18

M.C.E. CHART	
LOT	M.C.E.
FRAGRANT LILIES WAY	
39	342.21
40	342.82
41	343.36
42	343.95
43	344.57
44	345.05
45	345.23
46	344.55
47	344.01
48	343.42
49	342.85
50	342.57
51	338.19
52	338.42
53	338.85
54	338.90
55	339.88
56	342.95
57	343.37
58	343.88
59	344.58
60	345.30
61	346.09
62	346.67
63	346.98

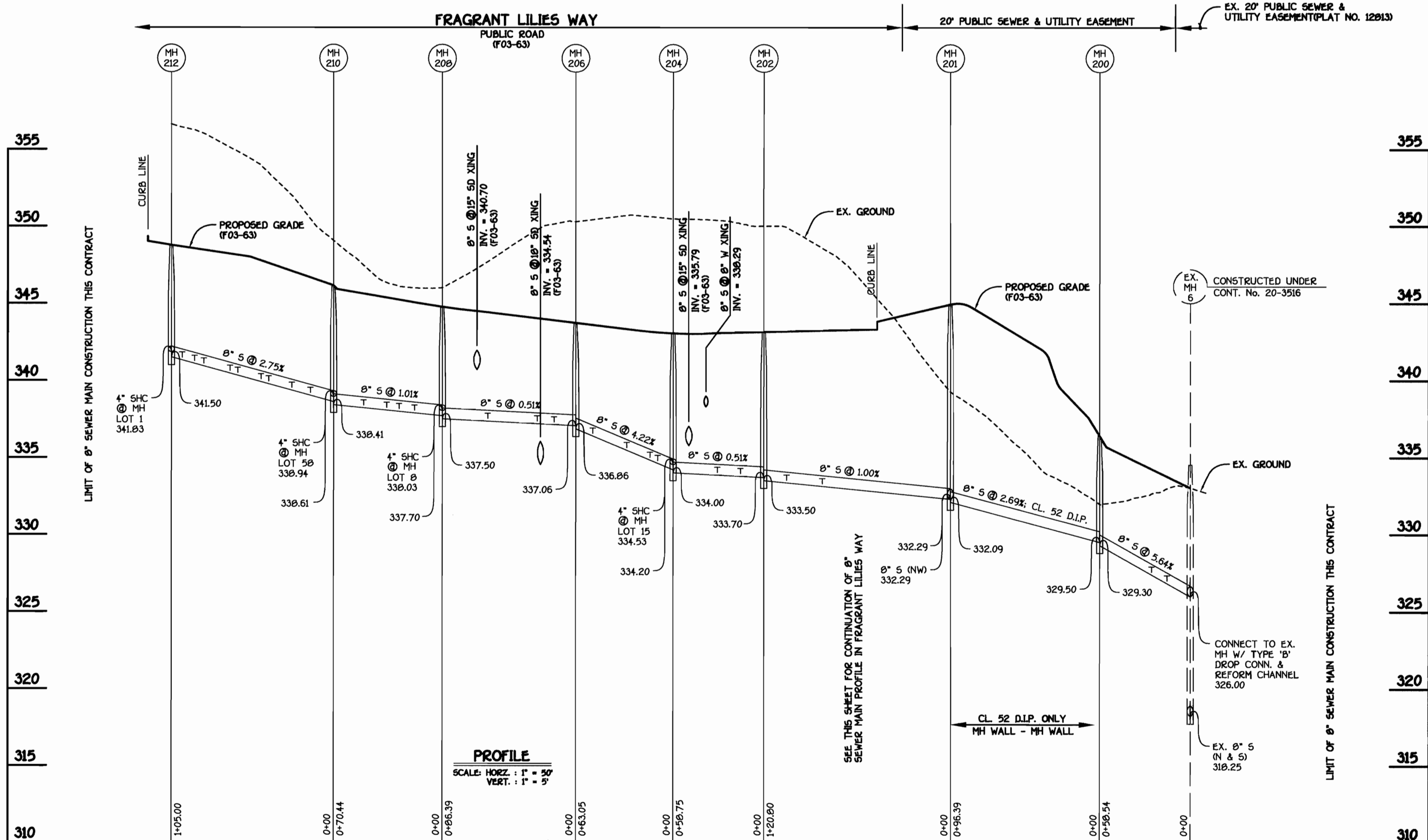
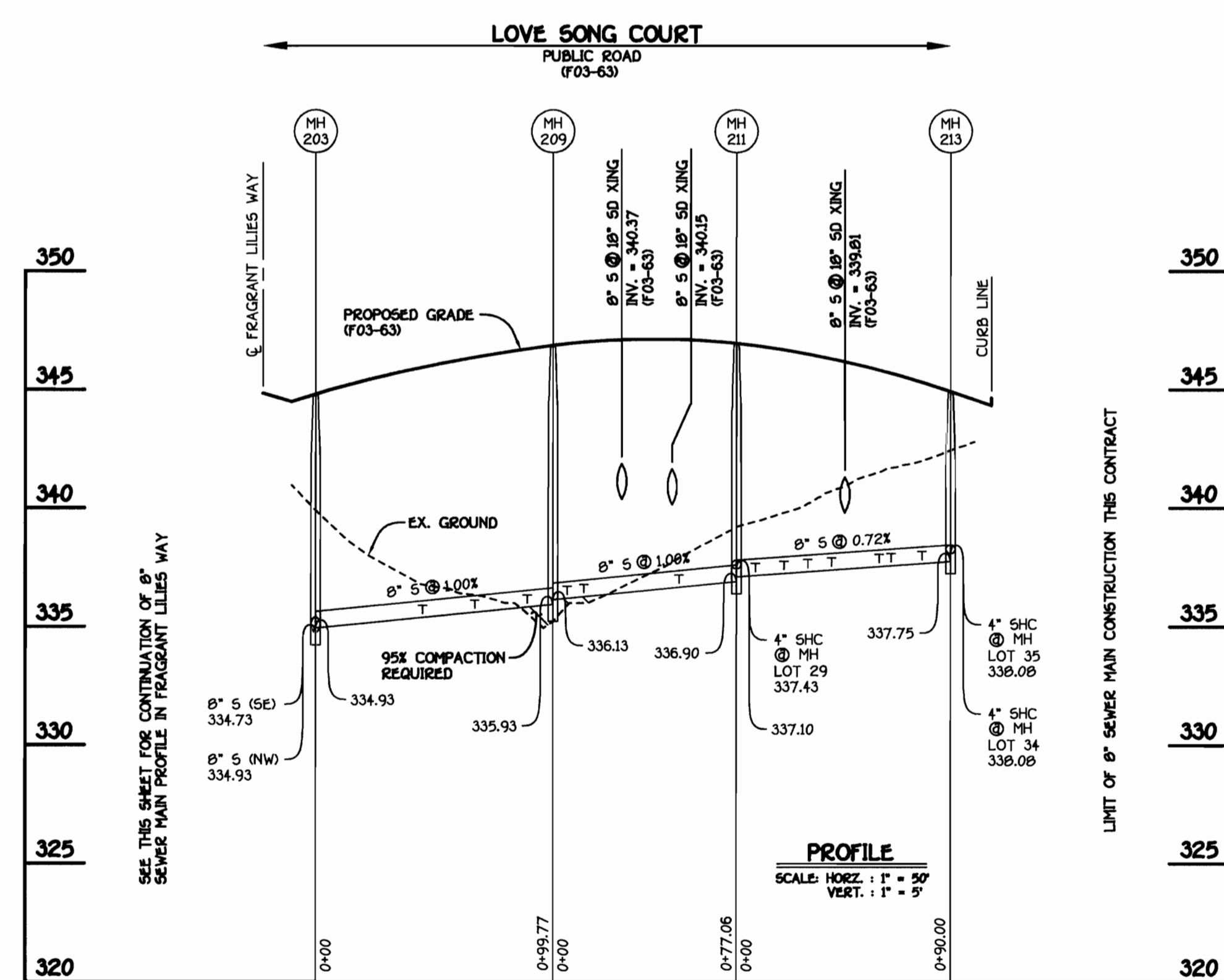
M.C.E. CHART	
LOT	M.C.E.
LOVE SONG COURT	
23	340.25
24	340.47
25	340.89
26	341.10
27	341.21
28	341.63
29	342.09
30	342.17
31	342.62
32	342.92
33	343.05
34	343.24
35	343.54
36	343.28
37	342.89
38	342.47

MANHOLE TABULATION CHART				
NO.	ROAD STATION	NORTHING	EASTING	RIM ELEVATION
200	OUTFALL SEWER MAIN	536838.79	1352509.90	336.00
201	OUTFALL SEWER MAIN	536878.76	1352422.19	343.07
DISTANCE				
202	4+00.07 FRAGRANT LILIES WAY	7.10' LT.	-1.00%	343.27
203	0+22.02 LOVE SONG COURT	5.00' RT.	+1.96%	344.71
204	4+56.06 FRAGRANT LILIES WAY	7.00' LT.	-1.00%	342.90
205	2+00.21 FRAGRANT LILIES WAY	1.66' LT.	-1.04%	343.50
206	5+16.72 FRAGRANT LILIES WAY	5.00' LT.	-1.12%	343.59
207	0+85.26 FRAGRANT LILIES WAY	4.89' LT.	-2.10%	347.58
208	6+01.40 FRAGRANT LILIES WAY	5.00' LT.	+1.60%	344.89
209	1+21.44 LOVE SONG COURT	5.29' RT.	+1.96%	346.64
210	6+72.84 FRAGRANT LILIES WAY	7.00' LT.	+1.60%	343.97
211	L.P. STATION 2+87.31 LOVE SONG COURT	4.00' RT.	---	347.12
212	L.P. STATION 1+35.48 FRAGRANT LILIES WAY	15.10' RT.	---	348.38
213	L.P. STATION 1+61.31 LOVE SONG COURT	17.38' RT.	---	343.13

NOTE: SET ALL MH RIMS FLUSH W/ PROPOSED FINISHED GRADE.

NOTE: SET ALL MH RIMS FLUSH W/ PROPOSED FINISHED GRADE; SEE MANHOLE TABULATION CHART THIS SHEET.

8" SEWER MAIN: FRAGRANT LILIES WAY



8" SEWER MAIN: LOVE SONG COURT

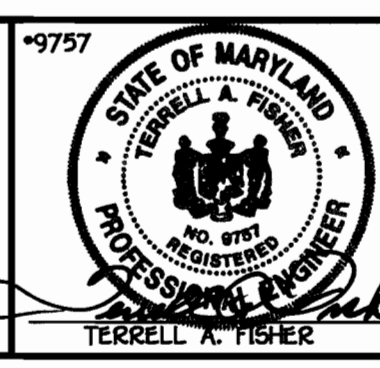
8" SEWER MAIN: FRAGRANT LILIES WAY

CONTRACT NO. 24-4058-D
SECTION 2: PHASE 2: PARCEL B-1,
LOTS 1 THRU 63 & OPEN SPACE LOT 64
WATER AND SEWER MAIN EXTENSIONS
HOWARD COUNTY, MARYLAND

DEPARTMENT OF PUBLIC WORKS
HOWARD COUNTY, MARYLAND
3-19-03

DEPARTMENT OF PLANNING AND ZONING
HOWARD COUNTY, MARYLAND
DATE

FISHER, COLLINS & CARTER, INC.
CIVIL ENGINEERING CONSULTANTS & LAND SURVEYORS
1102 BALTIMORE NATIONAL FREE
ELLSWORTH CITY, MARYLAND 21042
4103 461 - 2993



DESIGNED BY: M.D.T.
DRAWN BY: M.D.T.
CHECKED BY: P.M.K.
DATE: MARCH 2003

SEWER MAINS PROFILES
60' SCALE MAP NO. 47 BLOCK NO. 8
F.C.C. WORK ORDER NO. 40367
FILE NAME: FINAL SEWER MAIN PROFILES SHIT 4

EMERSON
SECTION 2: PHASE 2: PARCEL B-1,
LOTS 1 THRU 63 & OPEN SPACE LOT 64
CONTRACT NO. 24-4058-D
SIXTH ELECTION DISTRICT
HOWARD COUNTY, MARYLAND

SCALE AS SHOWN
SHEET 4 OF 4