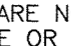


GENERAL NOTES

PART I

- APPROXIMATE LOCATION OF EXISTING MAINS ARE SHOWN. THE CONTRACTOR SHALL TAKE ALL NECESSARY PRECAUTIONS TO PROTECT EXISTING MAINS AND SERVICES AND MAINTAIN UNINTERRUPTED SUPPLY. ANY DAMAGE INCURRED SHALL BE REPAIRED IMMEDIATELY TO THE SATISFACTION OF THE ENGINEER AT THE CONTRACTOR'S EXPENSE.
- ALL HORIZONTAL CONTROLS ARE BASED ON MARYLAND STATE COORDINATES. (NAD '83)
- ALL VERTICAL CONTROLS ARE BASED ON U.S.G.S DATA.
- ALL PIPE ELEVATIONS SHOWN ARE INVERT ELEVATIONS.
- CLEAR ALL UTILITIES BY A MINIMUM OF 6". CLEAR ALL POLES BY 2'-0" MINIMUM OR TUNNEL AS REQUIRED. THE OWNER HAS CONTACTED THE UTILITY COMPANIES AND HAS MADE ARRANGEMENTS FOR BRACING OF POLES AS SHOWN ON DRAWINGS. IN THE EVENT THE CONTRACTOR'S WORK REQUIRES THE BRACING OF ADDITIONAL POLES, ANY COST INCURRED BY THE OWNER FOR BRACING OF ADDITIONAL POLES OR DAMAGES SHALL BE DEDUCTED FROM MONEY OWED THE CONTRACTOR. THE CONTRACTOR SHALL COORDINATE WITH THE UTILITY COMPANIES TO SCHEDULE THE BRACING OF THE POLES.
- FOR DETAILS NOT SHOWN ON THE DRAWINGS, AND FOR MATERIALS AND CONSTRUCTION METHODS USE HOWARD COUNTY DESIGN MANUAL, VOLUME IV, STANDARD SPECIFICATIONS AND DETAILS FOR CONSTRUCTION (LATEST EDITION). THE CONTRACTOR SHALL HAVE A COPY OF VOLUME IV ON THE JOB.
- WHERE TEST PITS HAVE BEEN MADE ON EXISTING UTILITIES, THEY ARE NOTED BY THE SYMBOL  AT THE LOCATION OF THE TEST PIT. A NOTE OR NOTES CONTAINING THE RESULTS OF THE TEST PIT OR PITS IS INCLUDED ON THE DRAWINGS. EXISTING UTILITIES IN THE VICINITY OF THE PROPOSED WORK FOR WHICH TEST PITS HAVE NOT BEEN DUG SHALL BE LOCATED BY THE CONTRACTOR TWO WEEKS IN ADVANCE OF CONSTRUCTION OPERATIONS AT HIS OWN EXPENSE.
- THE CONTRACTOR SHALL NOTIFY THE FOLLOWING UTILITY COMPANIES OR AGENCIES AT LEAST FIVE WORKING DAYS BEFORE STARTING WORK SHOWN THESE PLANS:

VERIZON	1-800-446-5266
STATE HIGHWAY ADMINISTRATION	410-531-5533
BGE CONTRACTOR SERVICES	410-850-4620
BGE UNDER GROUND DAMAGE CONTROL	410-291-4607
MISSISSIPPI UTILITY	1-800-257-7777
COLONIAL PIPELINE CO.	410-549-4120
HOWARD COUNTY DEPARTMENT OF PUBLIC WORKS BUREAU OF UTILITIES	410-313-4900

- TREES AND SHRUBS ARE TO BE PROTECTED FROM DAMAGE TO THE MAXIMUM EXTENT. TREES AND SHRUBS LOCATED WITHIN THE CONSTRUCTION STRIP ARE NOT TO BE REMOVED OR DAMAGED BY THE CONTRACTOR.
- THE CONTRACTOR SHALL REMOVE TREES, STUMPS AND ROOTS ALONG LINE OF EXCAVATION. PAYMENT FOR SUCH REMOVAL SHALL BE INCLUDED IN THE UNIT PRICE BID FOR THE CONSTRUCTION OF THE MAIN.
- THE CONTRACTOR SHALL NOTIFY THE BUREAU OF HIGHWAYS, HOWARD COUNTY, AT (410) 313-2450 AT LEAST FIVE WORKING DAYS BEFORE ANY OPEN CUT OF ANY COUNTY ROAD OR BORING/JACKING OPERATION IN COUNTY ROADS FOR LAYING WATER/SEWER MAIN OR HOUSE CONNECTIONS. THE APPROVAL OF THESE DRAWINGS WILL CONSTITUTE COMPLIANCE WITH DPW REQUIREMENTS PER SECTION 18.114(a) OF THE HOWARD COUNTY CODE.

PART II - WATER

- ALL WATER MAINS TO BE D.I.P. CLASS 52 UNLESS OTHERWISE NOTED.
- TOPS OF ALL WATER MAINS TO HAVE A MINIMUM OF 3'-1/2" COVER UNLESS OTHERWISE NOTED.
- VALVES ADJACENT TO TEES SHALL BE STRAPPED TO TEES.
- ALL FITTINGS SHALL BE BUTTRESSED OR ANCHORED WITH CONCRETE IN ACCORDANCE WITH THE STANDARD DETAILS UNLESS OTHERWISE PROVIDED FOR ON THE DRAWINGS.
- FIRE HYDRANTS SHALL BE SET TO THE BURY LINE ELEVATIONS SHOWN ON THE DRAWINGS. ALL FIRE HYDRANTS SHALL BE RESTRAINED AND BUTTRESSED WITH CONCRETE IN ACCORDANCE WITH STANDARD DETAILS. SOIL AROUND FIRE HYDRANT SHALL BE COMPACTED IN ACCORDANCE WITH SECTION 1000 AND 1005 OF THE STANDARD SPECIFICATIONS.
- THE CONTRACTOR SHALL NOT OPERATE ANY WATER MAIN VALVES ON THE EXISTING WATER SYSTEM.
- ALL WATER HOUSE CONNECTIONS SHALL BE FOR INSIDE METER SETTING UNLESS OTHERWISE NOTED ON PLANS OR IN SPECIFICATIONS.
- FOR SPRINKLER SYSTEM FOR ALL TOWN HOMES OR MULTI-FAMILY DWELLING UNITS SHOULD HAVE A MINIMUM OF 1' CONNECTION WITH A 3/4" METER.

PART III - SEWER

- ALL SEWER MAINS SHALL BE D.I.P. OR P.V.C. UNLESS OTHERWISE NOTED.
- ALL MANHOLES SHALL BE 4'-0" INSIDE DIAMETER UNLESS OTHERWISE NOTED.
- FORCE MAINS SHALL BE D.I.P. ONLY.
- MANHOLES SHOWN WITH 12" AND 16" WALLS ARE FOR BRICK MANHOLES ONLY.
- MANHOLES DESIGNATED W.T. IN PLAN AND PROFILE SHALL HAVE WATERTIGHT FRAME AND COVERS, STANDARD DETAIL G5.52. WHERE WATERTIGHT MANHOLE FRAME AND COVER IS USED, SET TOP OF FRAME 18" ABOVE FINISHED GRADE UNLESS OTHERWISE NOTED ON THE DRAWINGS.
- HOUSE(S) WITH THE SYMBOL "C.N.S" INDICATES THAT CELLAR CANNOT BE SERVED.

TYPE OF BUILDING:	RESIDENTIAL
NO. OF LOTS/PARCELS:	36
NO. OF WATER HOUSE CONNECTIONS:	32
NO. OF SEWER HOUSE CONNECTIONS:	32
DRAINAGE AREA:	PATAPSCO
TREATMENT PLANT:	PATAPSCO WASTE WATER TREATMENT PLANT

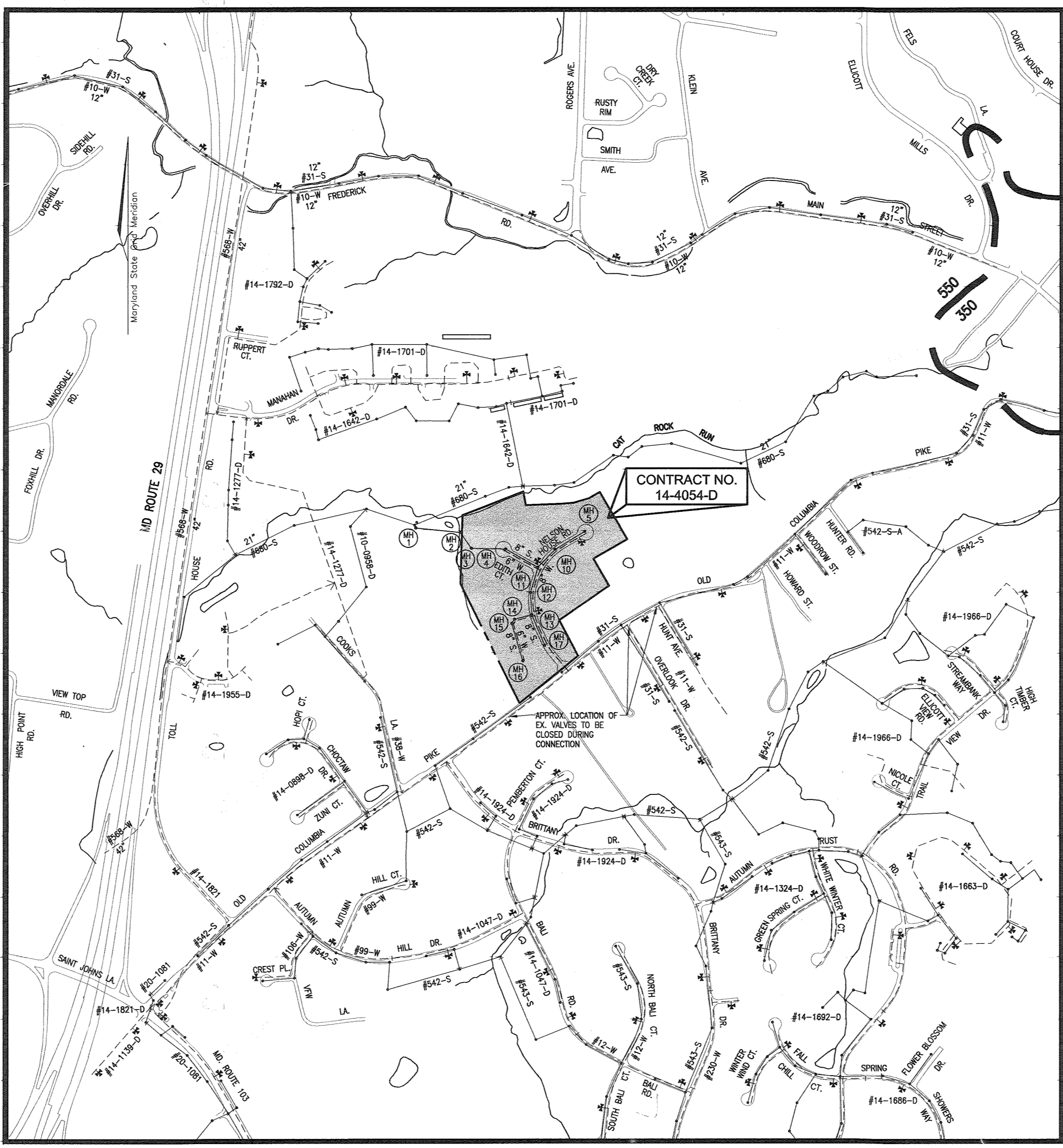
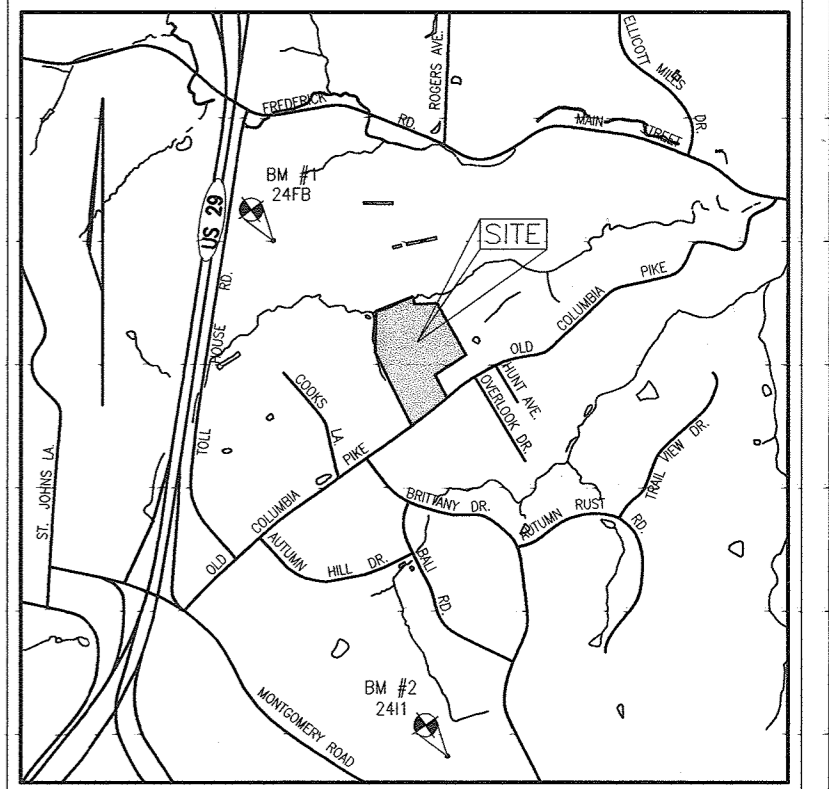
THE WOODS OF TIBER BRANCH

LOTS 1-36

HOWARD COUNTY, MARYLAND

CONTRACT NO. 14-4054-D

BENCHMARK NO. 1: COUNTY CONTROL #24FB
 N 582652.103 E 1364255.930
 ELEV. = 423.282
 HOWARD COUNTY CONCRETE MONUMENT
 BENCHMARK NO. 2: COUNTY CONTROL #2411
 N 577298.654 E 1366075.133
 ELEV. = 437.805
 HOWARD COUNTY CONCRETE MONUMENT



LOCATION PLAN
 SCALE: 1"=600'

WATER CODE: C-01
 SEWER CODE: 5060000
 WATER TEST GRADIENT: 700

THESE SHEETS WILL SUPERSEDE SHEET 1-6 - THE ORIGINAL M.Y.L.K. SET APPROVED AND SIGNED BY THE CHIEF OF DEVELOPMENT ENGINEERING DIVISION ON 10/31/03

SEDIMENT CONTROL MEASURES WILL BE IMPLEMENTED IN ACCORDANCE WITH SECTION 219 OF THE SPECIFICATIONS AND WITH FINAL PLAN F-03-119

THIS DEVELOPMENT IS APPROVED FOR SOIL EROSION AND SEDIMENT CONTROL BY THE HOWARD COUNTY SOIL CONSERVATION DISTRICT.

REVIEWED FOR HOWARD COUNTY SOIL CONSERVATION DISTRICT AND MEETS TECHNICAL REQUIREMENTS.

John K. Roberts 4/26/04
 SOIL CONSERVATION DISTRICT

Jim Meyer 4/26/04
 SOIL CONSERVATION DISTRICT

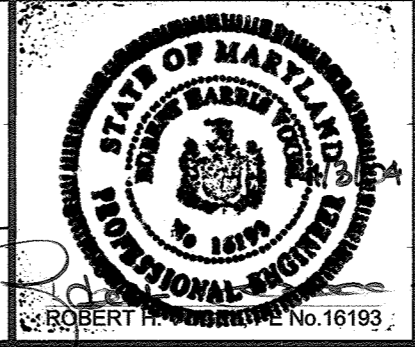
DEPARTMENT OF PUBLIC WORKS
 HOWARD COUNTY, MARYLAND
R. L. M. B... 4-19-04
 CHIEF, BUREAU OF UTILITIES

DEPARTMENT OF PLANNING & ZONING
 HOWARD COUNTY, MARYLAND
... 4/26/04
 CHIEF, DEVELOPMENT ENGINEERING DIVISION

F.W.A.
 FREDERICK WARD ASSOCIATES, INC.
 ARCHITECTS | ENGINEERS | PLANNERS | SURVEYORS | www.frederickward.com
 7125 RIVERWOOD DRIVE
 COLUMBIA, MARYLAND 21046-2354
 410-720-8900
 410-720-6226 fax

DES:	CMH		
DRN:	CMH		
CHK:	RHV	K.C.I. 2	AS-BUILT DATA 10/23/04
DATE:	OCT. 2003	BY NO.	CMH 1 REVISOR
			REVISION DATE 12/26/03

TITLE SHEET
 600' SCALE MAP NO. 24
 BLOCK NO. 18



THE WOODS OF TIBER BRANCH
 LOTS 1-36
 CONTRACT NO. 14-4054-D
 TAX MAP 24 BLOCKS 18
 2ND ELECTION DISTRICT
 PARCEL '255'
 HOWARD COUNTY, MARYLAND

SCALE AS SHOWN
 SHEET 1 OF 6



PLAN VIEW
SCALE: 1"=50'

DEPARTMENT OF PUBLIC WORKS
HOWARD COUNTY, MARYLAND

DEPARTMENT OF PLANNING & ZONING
HOWARD COUNTY, MARYLAND

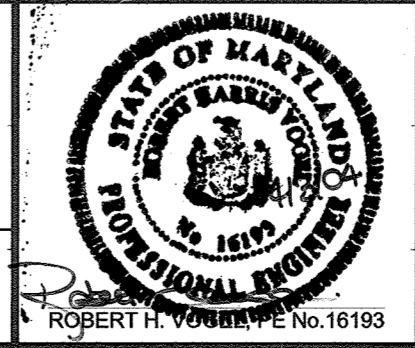


7125 RIVERWOOD DRIVE
COLUMBIA, MARYLAND 21046-2354
410-720-8900
410-720-6225 fax

FREDERICK WARD ASSOCIATES, INC.
ARCHITECTS | ENGINEERS | PLANNERS | SURVEYORS | www.frederickward.com

DES:	CMH		
DRN:	CMH		
CHK:	RHV	K.C.I. 2	ASBUILT DATA
DATE:	OCT. 2003	CMH 1	REVISED SEWER AND WATER ALIGNMENT
BY:	NO.		REVISION
			DATE
			10/23/04
			12/26/03

WATER AND SEWER PLAN



THE WOODS OF TIBER BRANCH

LOTS 1-36
CONTRACT NO. 14-4054-D

TAX MAP 24 BLOCKS 18
2ND ELECTION DISTRICT

PARCEL 255'
HOWARD COUNTY, MARYLAND

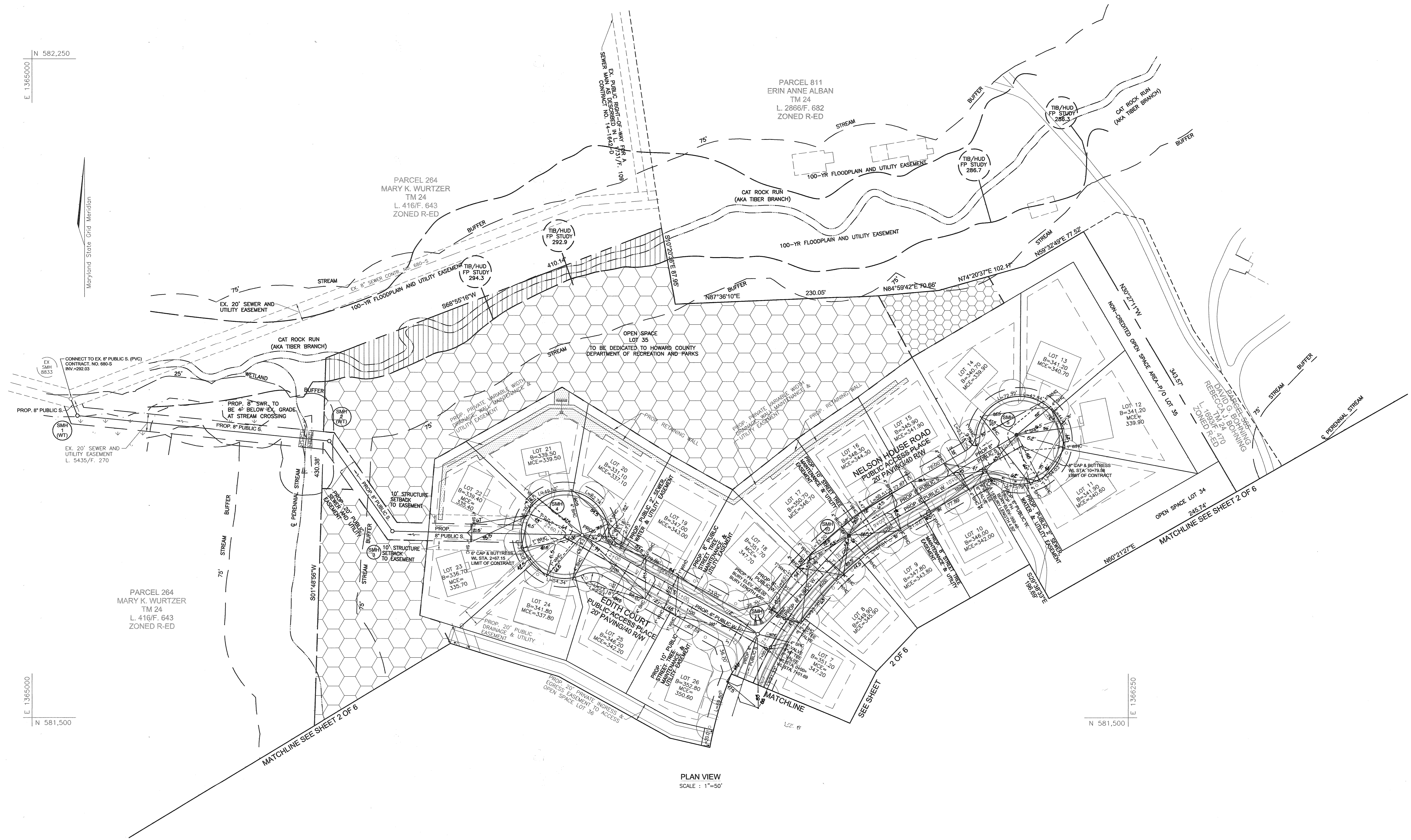
SCALE AS SHOWN
SHEET 2 OF 6

H:\PROJECTS\152017060\ENGR.dwg (Final)\MS\DEF_MS.dwg Thu Apr 01 10:13:18 2004 EA

N 582,250
E 1365000

N 581,500
E 1365000

Maryland State Grid Meridian



PLAN VIEW
SCALE: 1"=50'

DEPARTMENT OF PUBLIC WORKS
HOWARD COUNTY, MARYLAND

DEPARTMENT OF PLANNING & ZONING
HOWARD COUNTY, MARYLAND



FREDERICK WARD ASSOCIATES, INC.
ARCHITECTS | ENGINEERS | PLANNERS | SURVEYORS | www.frederickward.com

7125 RIVERWOOD DRIVE
COLUMBIA, MARYLAND 21046-2354
410-720-6900
410-720-6226 fax

DES: CMH

DRN: CMH

CHK: RHV

DATE: OCT. 2003

K.C.I. 2 ASBUILT DATA

CMH 1 REVISED SEWER AND WATER ALIGNMENT

BY NO. REVISION DATE

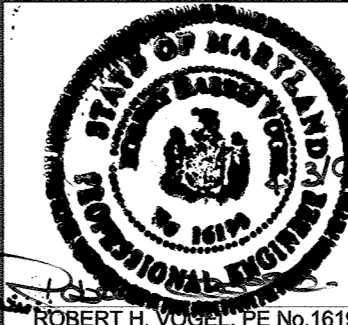
10/29/04

12/26/03

DATE

WATER AND SEWER PLAN

600' SCALE MAP NO. 24
BLOCK NO. 18



THE WOODS OF TIBER BRANCH

LOTS 1-36
CONTRACT NO. 14-4054-D

TAX MAP 24 BLOCKS 18
2ND ELECTION DISTRICT

PARCEL '25'
HOWARD COUNTY, MARYLAND

SCALE
AS
SHOWN

SHEET
3 OF 6

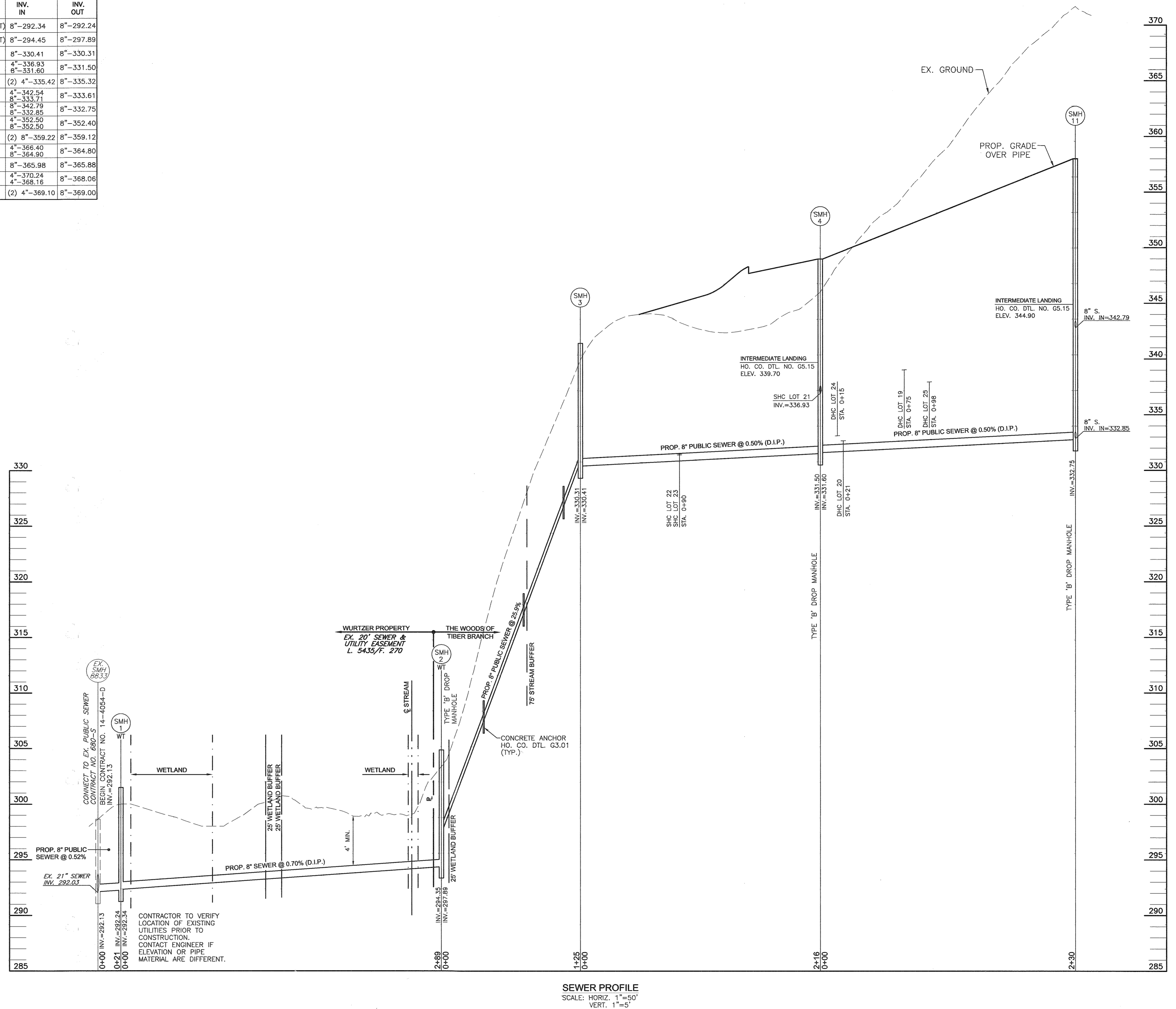
R. H. Berman 4.19.04
CHIEF, BUREAU OF UTILITIES DATE

W. D. ... 4/21/04
CHIEF, DEVELOPMENT ENGINEERING DIVISION DATE

SEWER CONNECTION TABULATION					
LOT NO	TYPE	ELEV. @ DROP	ELEV. @ MAN	ELEVATION @ R/W OR PUBLIC CASSEMENT	M.C.E.
1	S.H.C.	-	369.10	369.45	373.60
2	S.H.C.	-	369.10	369.74	373.60
3	S.H.C.	-	362.72	363.23	367.00
4	S.H.C.	-	361.17	361.72	365.40
5	S.H.C.	-	353.93	354.48	358.20
6	S.H.C.	-	347.50	348.00	351.80
7	S.H.C.	-	342.79	343.52	347.20
8	D.H.C.	341.69	333.61	342.20	345.90
9	D.H.C.	339.59	334.27	340.10	343.80
10	D.H.C.	337.65	334.92	338.20	342.00
11	S.H.C.	-	335.32	336.47	340.60
12	S.H.C.	-	335.42	336.43	339.90
13	S.H.C.	-	335.42	336.30	340.70
14	S.H.C.	-	335.33	336.12	339.90
15	D.H.C.	337.80	334.85	338.10	341.90
16	D.H.C.	340.07	334.36	340.40	344.30
17	S.H.C.	-	342.54	342.80	346.70
18	D.H.C.	343.45	333.46	343.80	347.70
19	D.H.C.	339.03	332.15	339.30	343.00
20	D.H.C.	332.67	331.87	333.20	337.10
21	S.H.C.	-	336.93	338.00	339.50
22	S.H.C.	-	331.40	331.60	335.40
23	S.H.C.	-	331.50	331.70	335.70
24	D.H.C.	333.11	331.85	334.10	337.80
25	D.H.C.	337.94	332.26	338.50	342.20
26	S.H.C.	-	346.70	347.03	350.60
27	S.H.C.	-	352.50	352.71	356.20
28	S.H.C.	-	356.24	356.57	360.30
29	S.H.C.	-	366.40	366.60	367.70
30	S.H.C.	-	366.84	367.08	370.80
31	S.H.C.	-	370.24	370.00	374.00
32	S.H.C.	-	368.16	368.87	373.10

SEWER MANHOLE SCHEDULE					
NO.	TYPE	LOCATION	TOP ELEV.	INV. IN.	INV. OUT.
SMH 1	STD. PRECAST MH HO. CO. STD. DET. G5.12	N 581843.78 E 1365051.72	301.49(WT)	8"-292.34	8"-292.24
SMH 2	STD. PRECAST MH HO. CO. STD. DET. G5.12	N 581815.70 E 1365339.19	304.86(WT)	8"-294.45	8"-297.89
SMH 3	STD. PRECAST MH HO. CO. STD. DET. G5.12	N 581712.51 E 1365410.96	341.50*	8"-330.41	8"-330.31
SMH 4	STD. PRECAST MH HO. CO. STD. DET. G5.12	N 581707.95 E 1365627.27	348.99	4"-336.93 8"-331.60	8"-331.50
SMH 5	STD. PRECAST MH HO. CO. STD. DET. G5.12	CL STA. 10+78.68-7.00' LT.	351.05	(2) 4"-335.42	8"-335.32
SMH 10	STD. PRECAST MH HO. CO. STD. DET. G5.12	CL STA. 8+56.75-7.18' LT.	349.25	4"-342.54 8"-333.71	8"-333.61
SMH 11	STD. PRECAST MH HO. CO. STD. DET. G5.12	CL STA. 0+13.04-6.80' RT.	353.78	8"-342.79 8"-332.85	8"-332.75
SMH 12	STD. PRECAST MH HO. CO. STD. DET. G5.12	CL STA. 5+43.64-9.58' LT.	361.69	4"-352.50 8"-352.50	8"-352.40
SMH 13	STD. PRECAST MH HO. CO. STD. DET. G5.12	CL STA. 4+07.65-9.53' LT.	369.86	(2) 8"-359.22	8"-359.12
SMH 14	STD. PRECAST MH HO. CO. STD. DET. G5.12	N 581269.61 E 1365677.15	379.46	4"-366.40 8"-364.90	8"-364.80
SMH 15	STD. PRECAST MH HO. CO. STD. DET. G5.12	N 581242.39 E 1365660.70	380.41	8"-365.98	8"-365.88
SMH 16	STD. PRECAST MH HO. CO. STD. DET. G5.12	N 581006.58 E 1365730.97	382.05	4"-370.24 4"-368.16	8"-368.06
SMH 17	STD. PRECAST MH HO. CO. STD. DET. G5.12	CL STA. 5+90.95-9.54' LT.	381.49	(2) 4"-369.10	8"-369.00

(WT)-WATERTIGHT MANHOLE; TOP ELEVATION GIVEN AT 1'-6" ABOVE GRADE
 *-TOP ELEVATION GIVEN AT 1'-6" ABOVE GRADE



SEWER PROFILE
 SCALE: HORIZ. 1"=50'
 VERT. 1"=5'

DEPARTMENT OF PUBLIC WORKS
 HOWARD COUNTY, MARYLAND

DEPARTMENT OF PLANNING & ZONING
 HOWARD COUNTY, MARYLAND



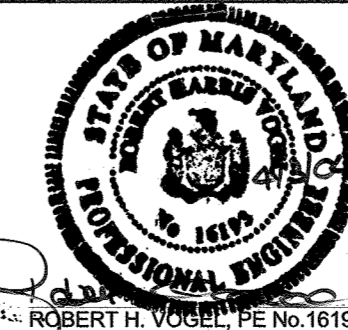
FREDERICK WARD ASSOCIATES, INC.
 ARCHITECTS | ENGINEERS | PLANNERS | SURVEYORS | www.frederickward.com

7125 RIVERWOOD DRIVE
 COLUMBIA, MARYLAND 21046-2354
 410-720-6900
 410-720-6225 fax

DES:	CMH			
DRN:	CMH			
CHK:	RHV			
DATE:	OCT. 2003			
BY:	NO.	REVISION	DATE	
		CMH 1 REVISED SEWER AND WATER ALIGNMENT	12/26/03	

SEWER PROFILES

600' SCALE MAP NO. 24
 BLOCK NO. 18

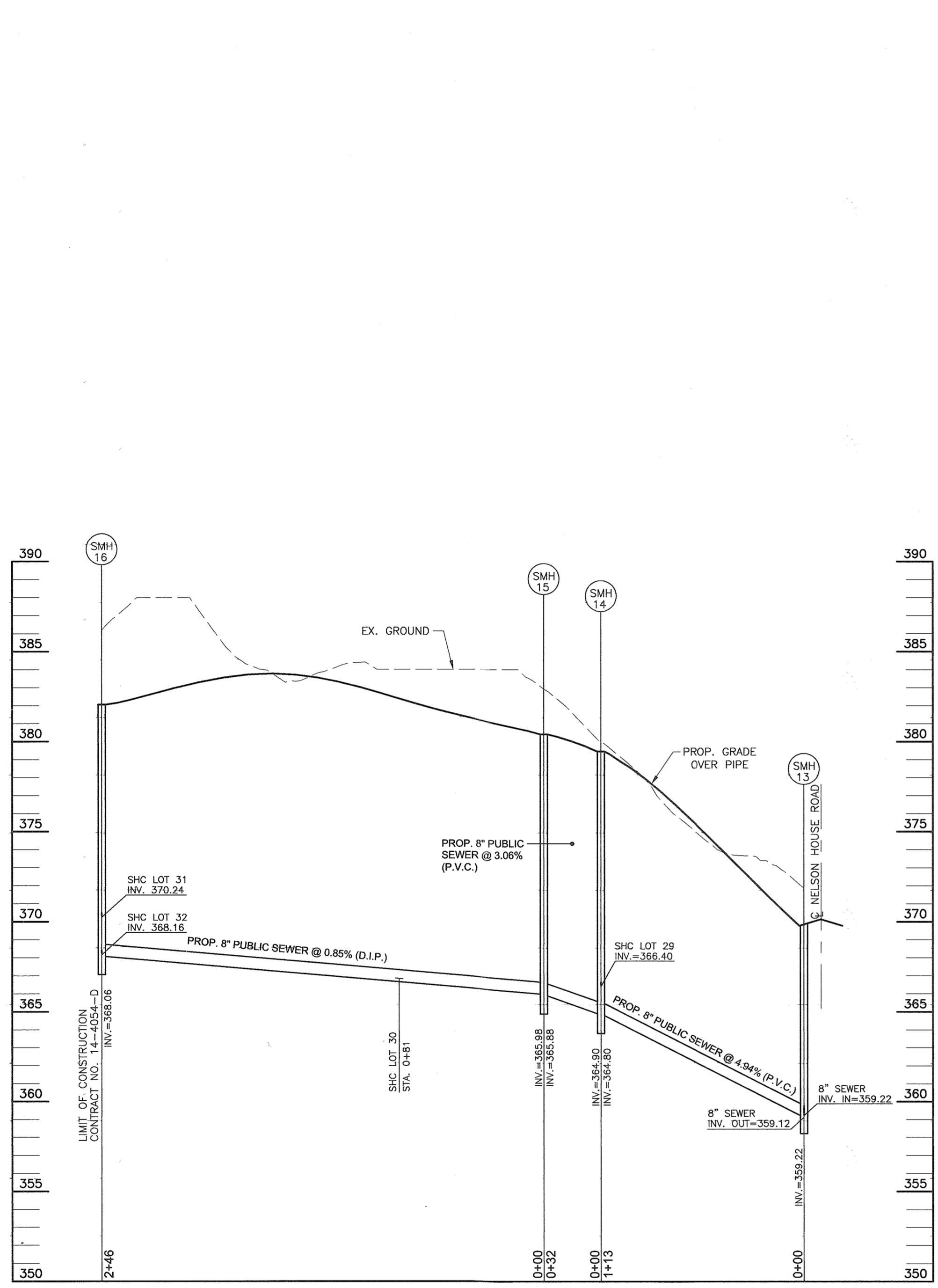


THE WOODS OF TIBER BRANCH
 LOTS 1-36
 CONTRACT NO. 14-4054-D

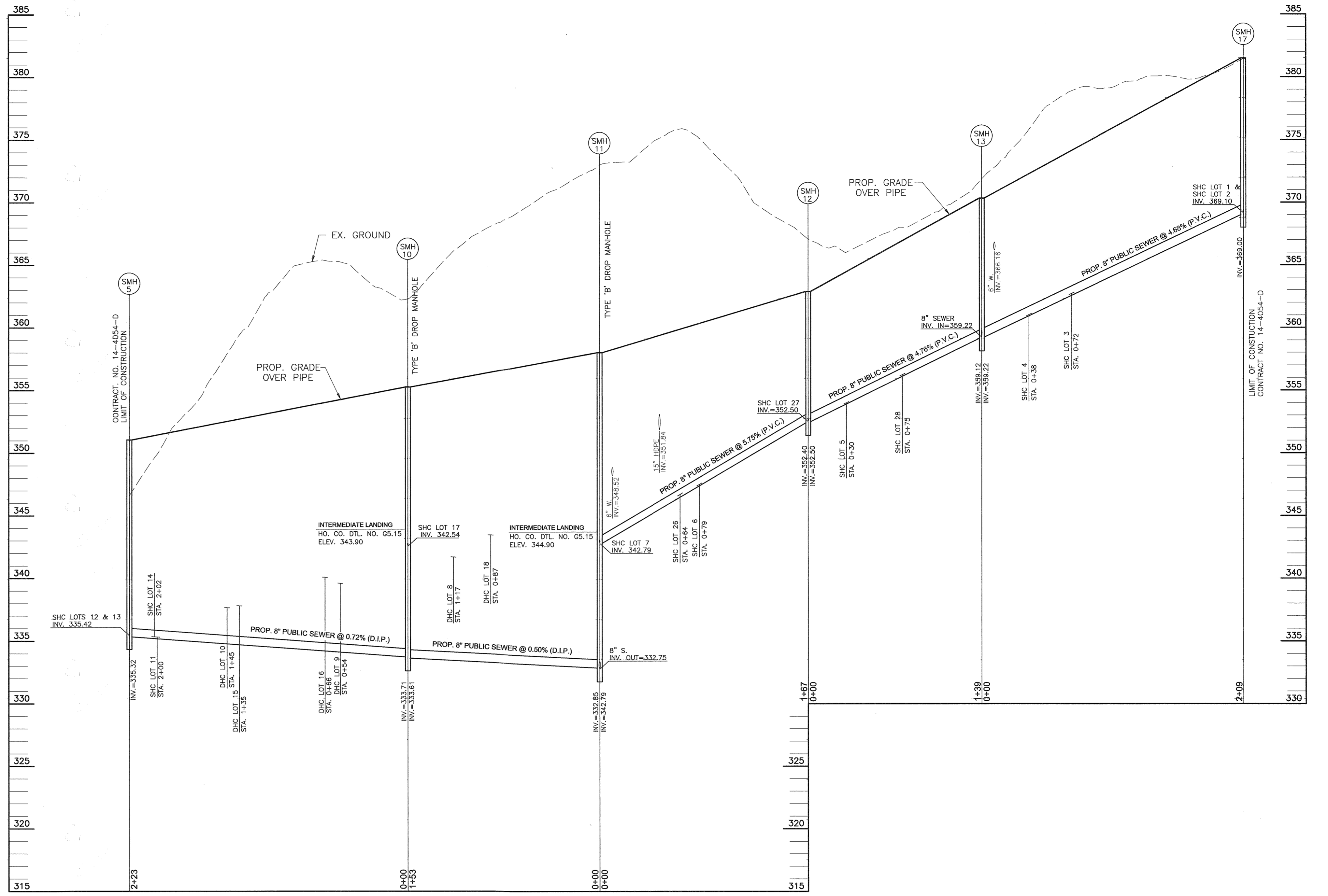
TAX MAP 24 BLOCKS 18
 2ND ELECTION DISTRICT

PARCEL '25'
 HOWARD COUNTY, MARYLAND

SCALE AS SHOWN
 SHEET 4 OF 6



SEWER PROFILE
SCALE: HORIZ. 1"=50'
VERT. 1"=5'



SEWER PROFILE
SCALE: HORIZ. 1"=50'
VERT. 1"=5'

DEPARTMENT OF PUBLIC WORKS
HOWARD COUNTY, MARYLAND

DEPARTMENT OF PLANNING & ZONING
HOWARD COUNTY, MARYLAND



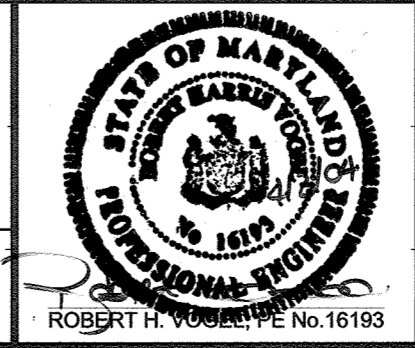
7125 RIVERWOOD DRIVE
COLUMBIA, MARYLAND 21046-2354
410-720-6900
410-720-6226 fax

FREDERICK WARD ASSOCIATES, INC.
ARCHITECTS | ENGINEERS | PLANNERS | SURVEYORS | www.frederickward.com

DES:	CMH			
DRN:	CMH			
CHK:	RHV			
DATE:	OCT. 2003	CMH	1	REVISED SEWER AND WATER ALIGNMENT
		BY	NO.	REVISION
				DATE
				12/26/03

SEWER PROFILES

600' SCALE MAP NO. 24
BLOCK NO. 18



THE WOODS OF TIBER BRANCH

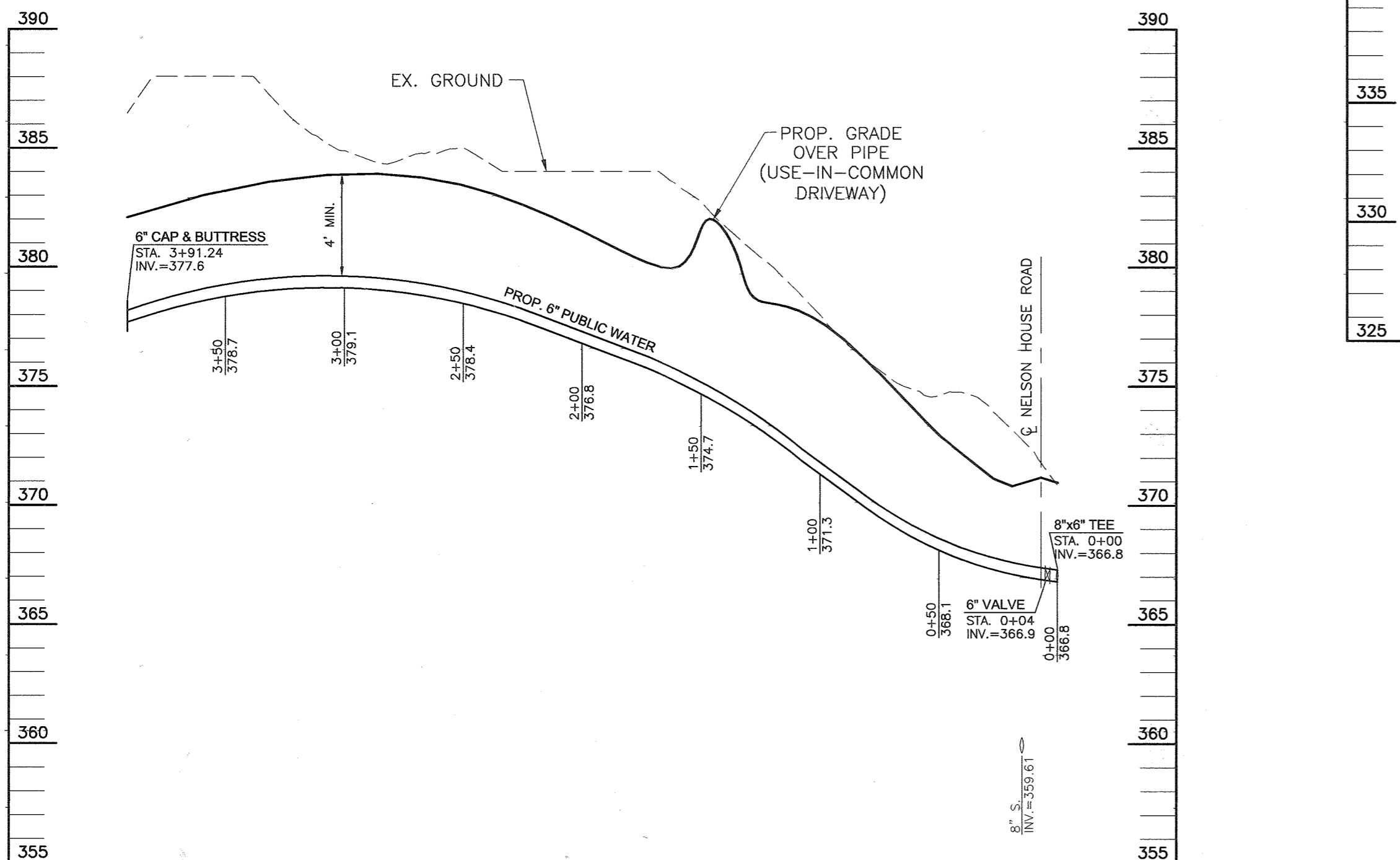
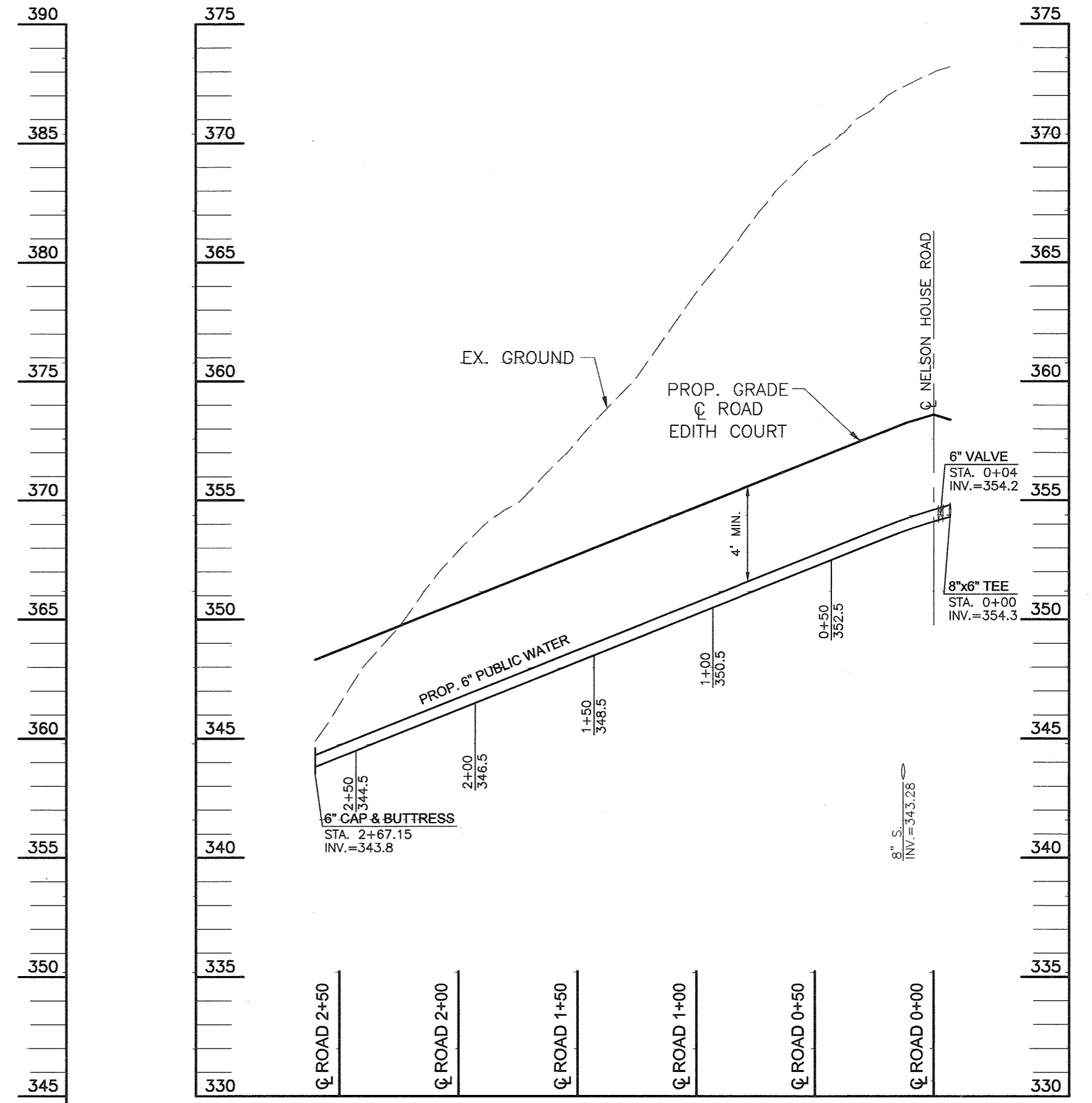
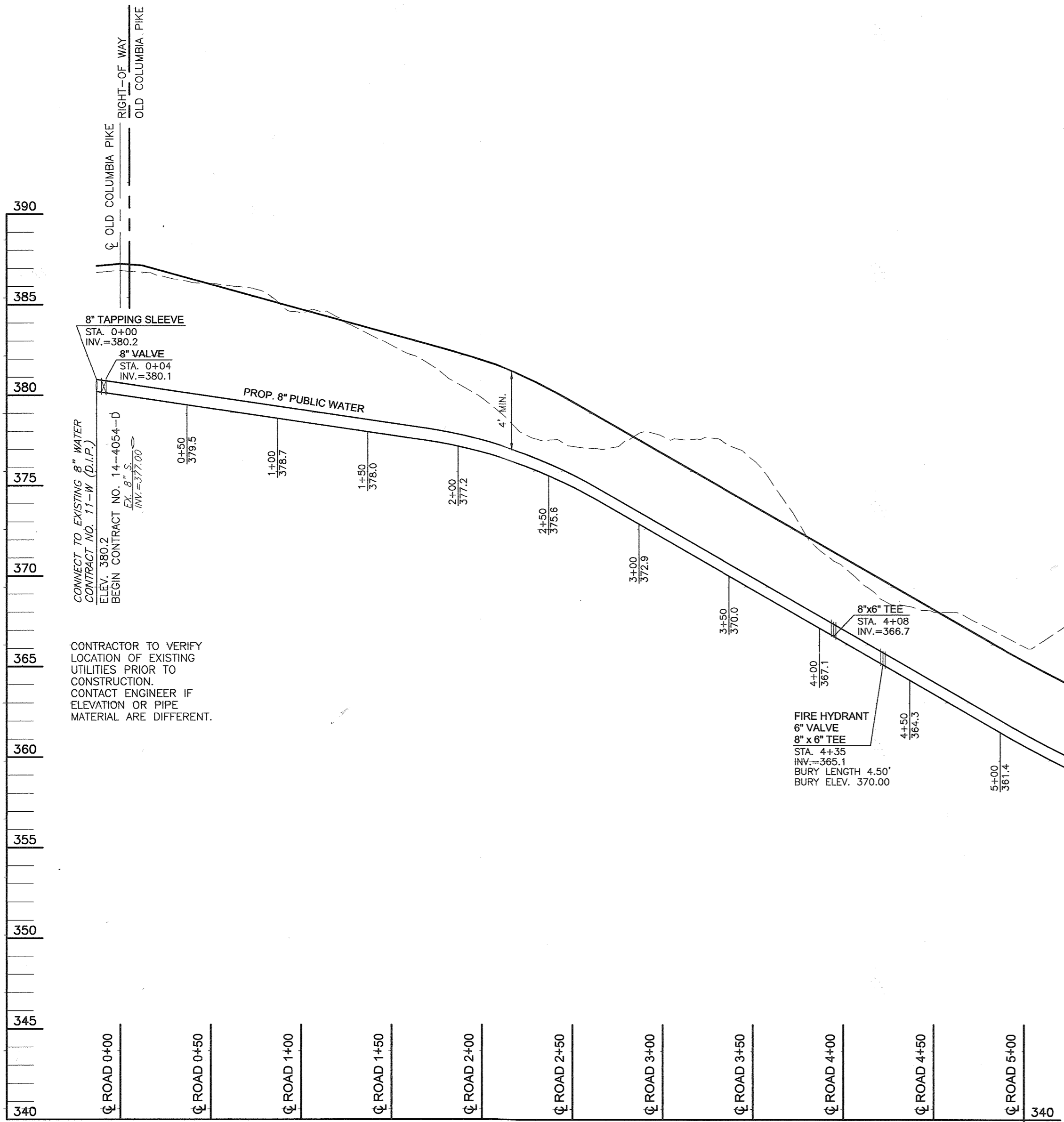
LOTS 1-36
CONTRACT NO. 14-4054-D

TAX MAP 24 BLOCKS 18
2ND ELECTION DISTRICT

PARCEL '255'
HOWARD COUNTY, MARYLAND

SCALE
AS
SHOWN

SHEET
5 OF 6



WATER PROFILE
 SCALE: HORIZ. 1"=50'
 VERT. 1"=5'

WATER PROFILE
 SCALE: HORIZ. 1"=50'
 VERT. 1"=5'

CL. ROAD/WL. STA.	APPURTENANCE	OFFSET/NORTHING-EASTING
NELSON HOUSE ROAD		
CL STA. -0+13	8" TAPPING SLEEVE	7' RIGHT
CL STA. -0+09	8" VALVE	7' RIGHT
CL STA. 3+98	8" x 6" TEE	7' RIGHT
CL STA. 3+98	6" VALVE	3' RIGHT
CL STA. 4+26	8" x 6" TEE	7' RIGHT
CL STA. 4+26	6" VALVE	11' RIGHT
CL STA. 4+26	FIRE HYDRANT	22' RIGHT
CL STA. 6+97	8" x 6" TEE	7' RIGHT
CL STA. 6+97	6" VALVE	3' RIGHT
CL STA. 7+01	8" VALVE	7' RIGHT
CL STA. 7+37	8" x 6" TEE	7' RIGHT
CL STA. 7+37	6" VALVE	3' RIGHT
CL STA. 7+37	FIRE HYDRANT	14' LEFT
CL STA. 10+28	8" x 6" TEE	7' RIGHT
CL STA. 10+28	6" VALVE	11' RIGHT
CL STA. 10+28	FIRE HYDRANT	24' RIGHT
CL STA. 10+79	8" CAP & BUTTRESS	7' RIGHT
EDITH COURT		
2+60	6" CAP & BUTTRESS	3' LEFT
USE-IN-COMMON DRIVEWAY		
WL STA. 3+91	6" CAP & BUTTRESS	N 581009, E 1365740

CRIMP NO.	RADIUS	PC STATION	PT STATION
CR1	293.00'	1+45.42	2+21.33
CR2	393.00'	3+31.87	9+20.71

DEPARTMENT OF PUBLIC WORKS
 HOWARD COUNTY, MARYLAND

R. B. ... 4-19-04
 CHIEF, BUREAU OF UTILITIES

DEPARTMENT OF PLANNING & ZONING
 HOWARD COUNTY, MARYLAND

... 4/21/04
 CHIEF, DEVELOPMENT ENGINEERING DIVISION

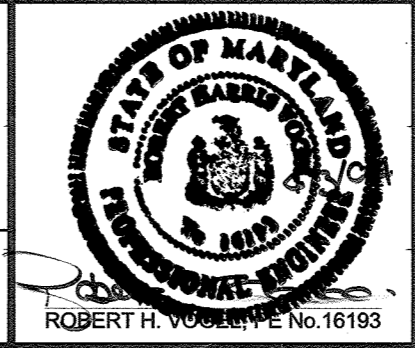
F.W.A.
 FREDERICK WARD ASSOCIATES, INC.
 ARCHITECTS | ENGINEERS | PLANNERS | SURVEYORS
 www.frederickward.com

7125 RIVERWOOD DRIVE
 COLUMBIA, MARYLAND 21046-2354
 410-720-6900
 410-720-6226 fax

DES:	CMH		
DRN:	CMH		
CHK:	RHV		
DATE:	OCT. 2003	CMH 1	REVISED SEWER AND WATER ALIGNMENT 12/26/03
BY:	NO.		REVISION
			DATE

WATER PROFILES

600' SCALE MAP NO. 24
 BLOCK NO. 18



THE WOODS OF TIBER BRANCH
 LOTS 1-36
 CONTRACT NO. 14-4054-D

TAX MAP 24 BLOCKS 18
 2ND ELECTION DISTRICT

PARCEL '25'
 HOWARD COUNTY, MARYLAND

SCALE AS SHOWN

SHEET 6 OF 6