

PLAN
SCALE: 1"=50'

AS BUILT
DATE: JULY 11, 2003

DEPARTMENT OF PUBLIC WORKS
HOWARD COUNTY, MARYLAND

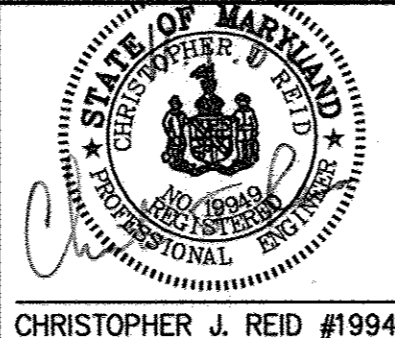
R. H. B.
11-12-02
CHIEF, BUREAU OF UTILITIES DATE

DEPARTMENT OF PLANNING & ZONING
HOWARD COUNTY, MARYLAND

M. J. D.
12/3/02
CHIEF, DEVELOPMENT ENGINEERING DIVISION DATE

Patton Harris Rust & Associates, pc
Engineers, Surveyors, Planners, Landscape Architects.

PHRA
8818 Centre Park Drive
Columbia, MD 21045
T 410.997.8900
F 410.997.9282



DES:	C.J.R.				
DRN:	DAM				
CHK:	C.J.R.				
DATE:	10/30/02				
BY:	C.E.I.	NO.	1	REVISION	"AS-BUILT"
					7-11-03

PLAN VIEW OF
WATER AND SEWER MAINS

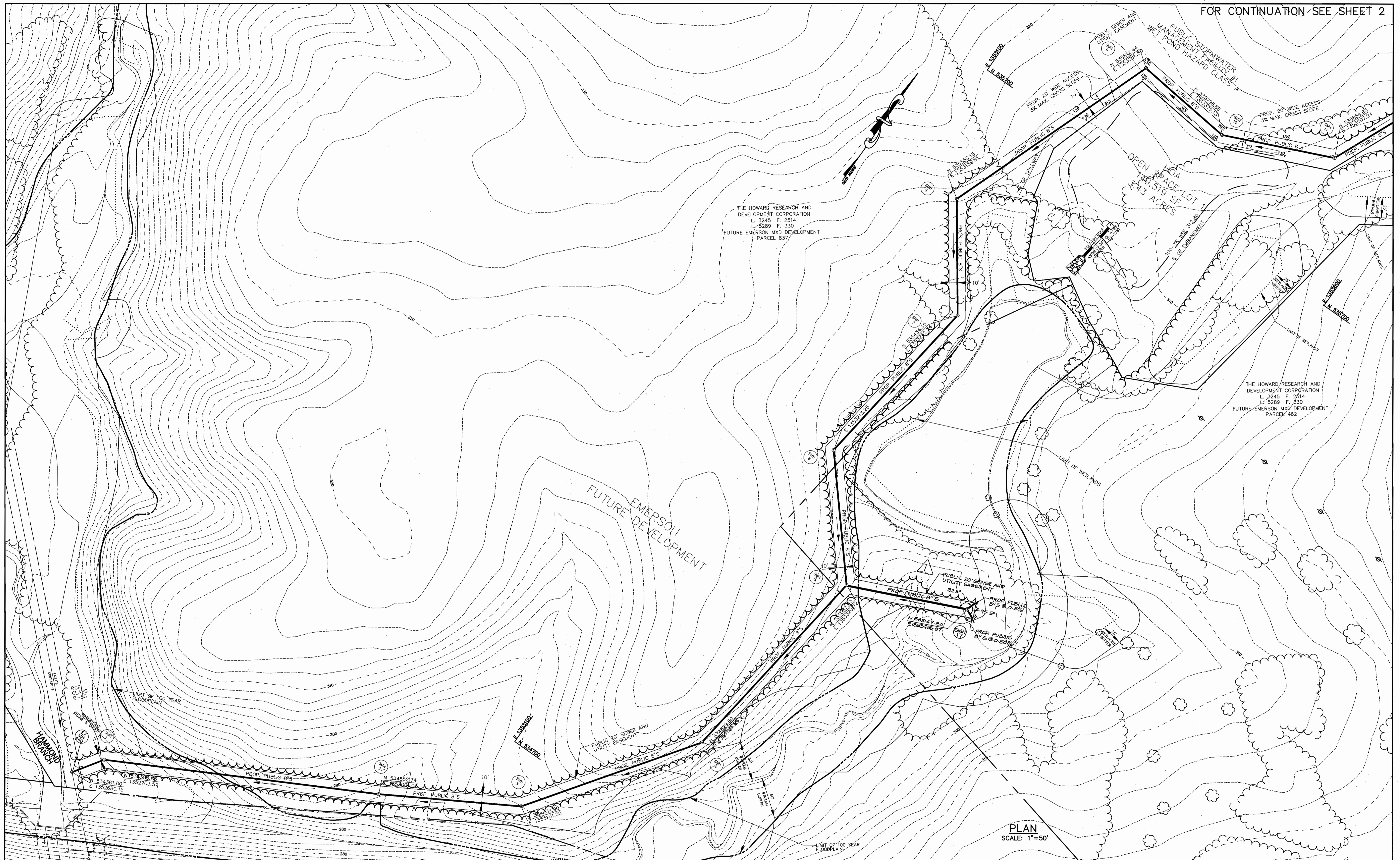
600' SCALE MAP NO. 47 BLOCK NO. 8 & 9

EMERSON
SECTION 3 AREA 2
PARCEL A & B AND OPEN SPACE LOT 1
6th ELECTION DISTRICT
HOWARD COUNTY, MARYLAND
CONTRACT 24-4049-D

SCALE
AS
SHOWN

SHEET
2 OF 5

\\project\224561_01\Eng\Plans\FINAL\SW2.dwg Layout: 10/30/02 11:57:00 AM HP750C(86).pc3 Arch D - 24 x 36 in. (landscape) 1:1



PLAN
SCALE: 1"=50'

DEPARTMENT OF PUBLIC WORKS
HOWARD COUNTY, MARYLAND

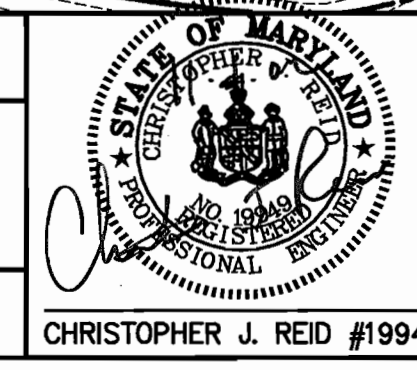
R. J. Reid 11-12-02
CHIEF, BUREAU OF UTILITIES DATE

DEPARTMENT OF PLANNING & ZONING
HOWARD COUNTY, MARYLAND

Christopher J. Reid 12/8/02
CHIEF, DEVELOPMENT ENGINEERING DIVISION DATE

Patton Harris Rust & Associates, pc
Engineers, Surveyors, Planners, Landscape Architects.

PHRA
8518 Centre Park Drive
Columbia, MD 21045
T 410.997.8900
F 410.997.9282



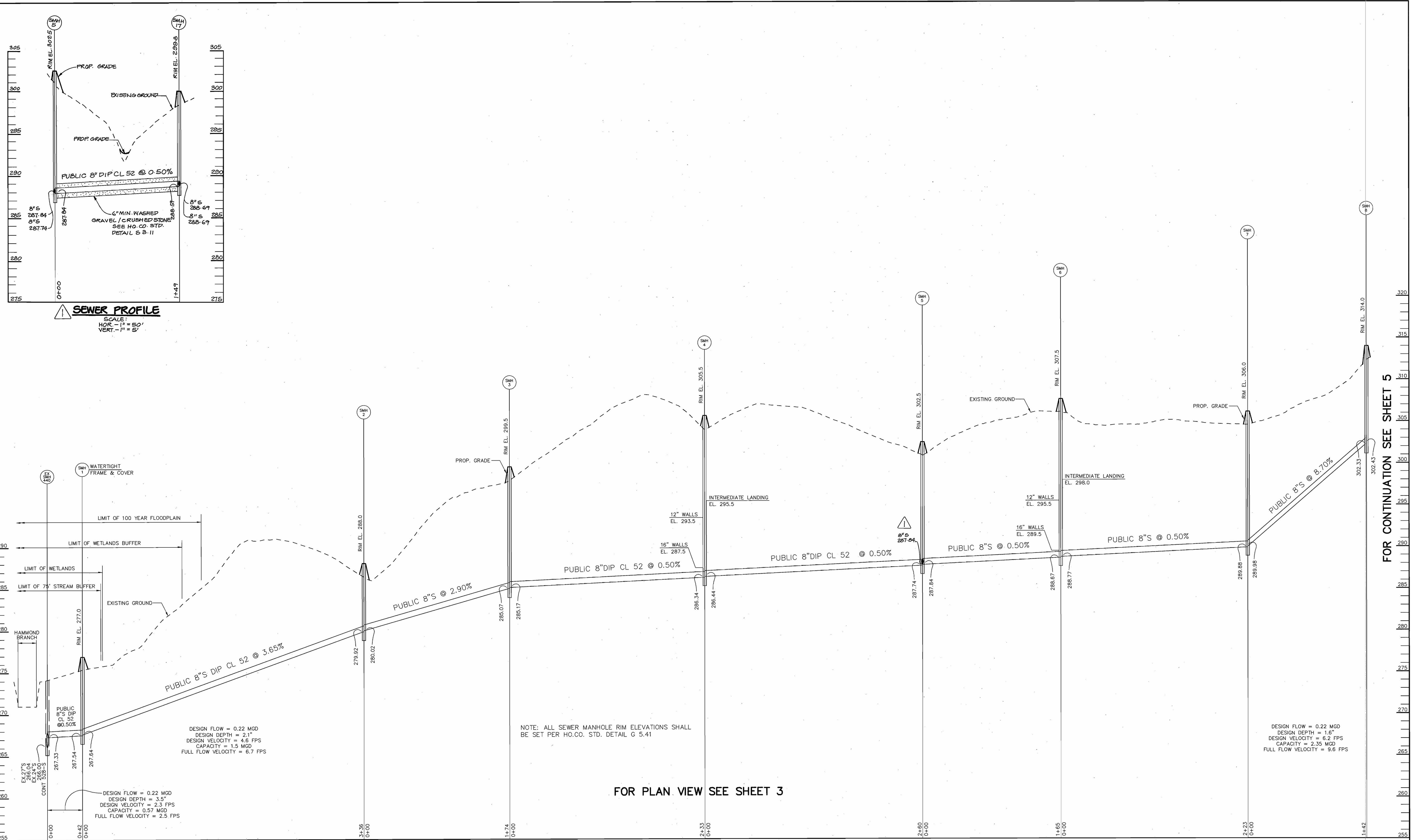
DES:	C.J.R.				
DRN:	DAM				
CHK:	C.J.R.				
DATE:	10/30/02				
BY:	CJR	ADDED SMH 17 FROM SMH 5		0410-02	
	NO.	REVISION		DATE	

PLAN VIEW OF
SEWER MAINS

600' SCALE MAP NO. 47 BLOCK NO. 8 & 9

EMERSON
SECTION 3 AREA 2
PARCEL A & B AND OPEN SPACE LOT 1
6th ELECTION DISTRICT
HOWARD COUNTY, MARYLAND
CONTRACT 24-4049-D

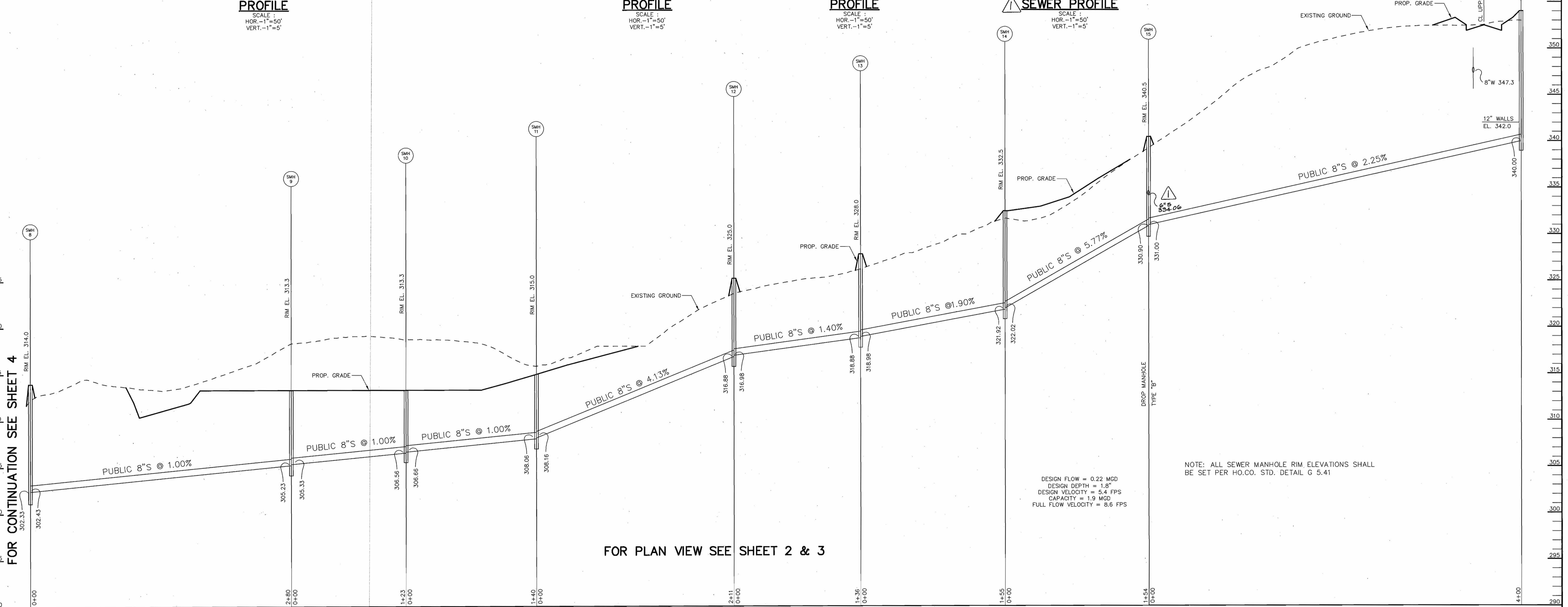
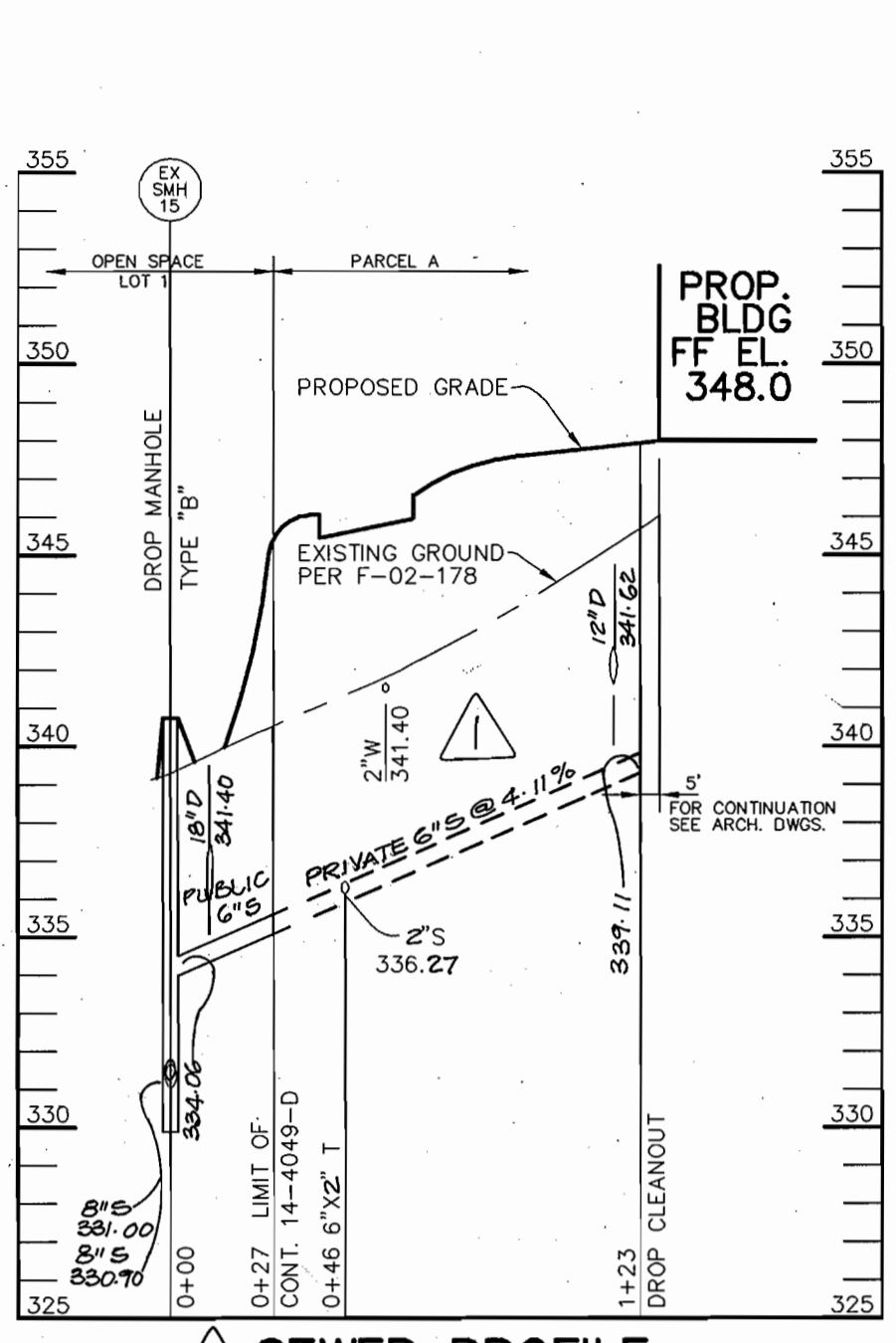
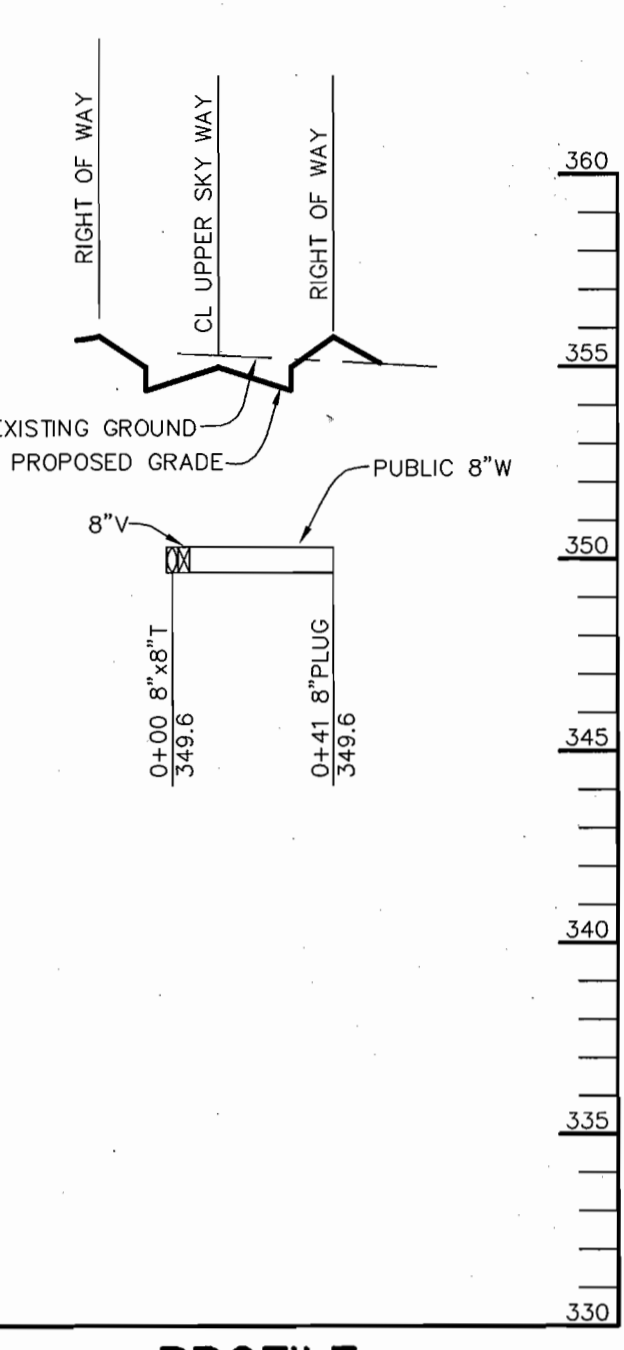
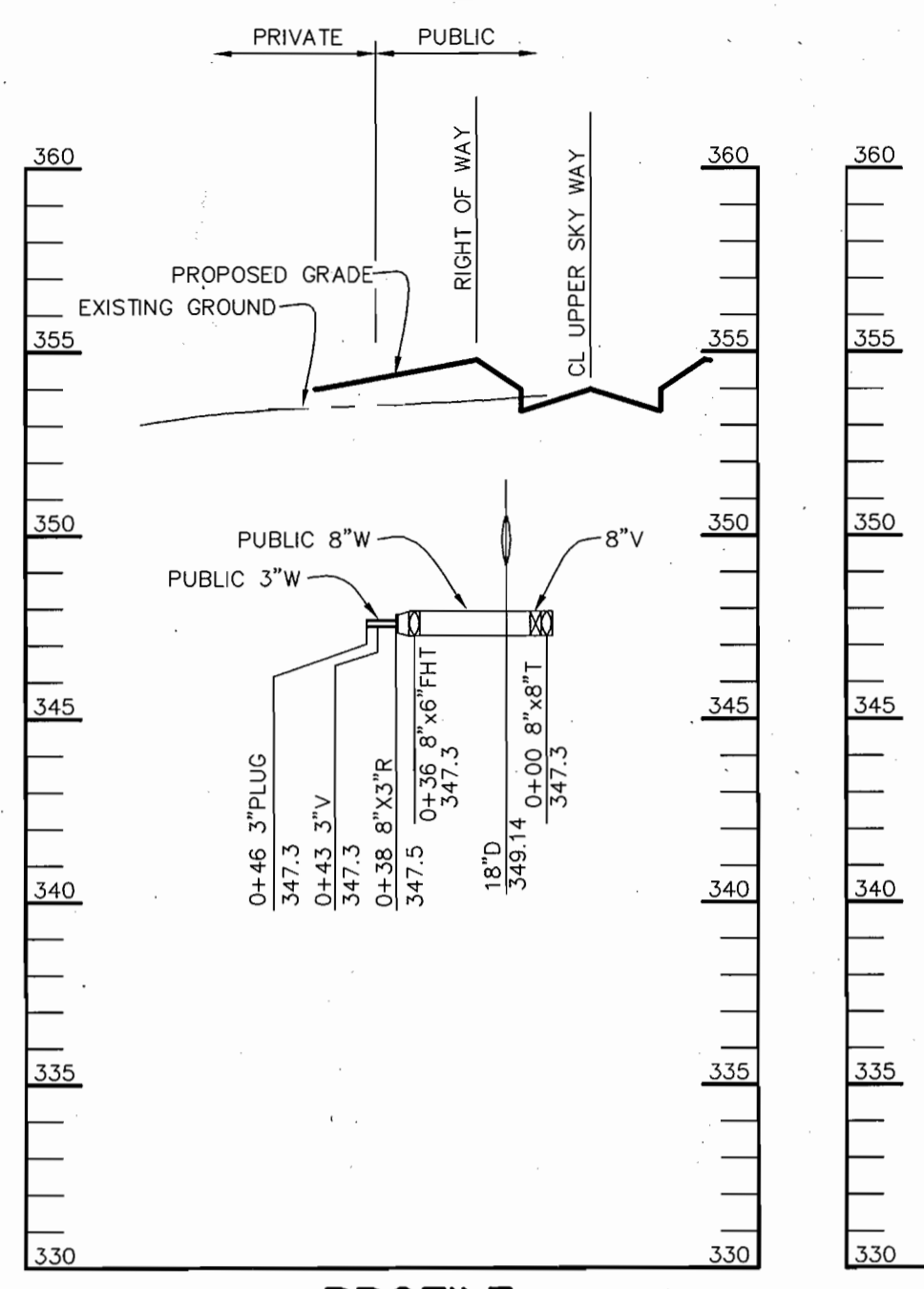
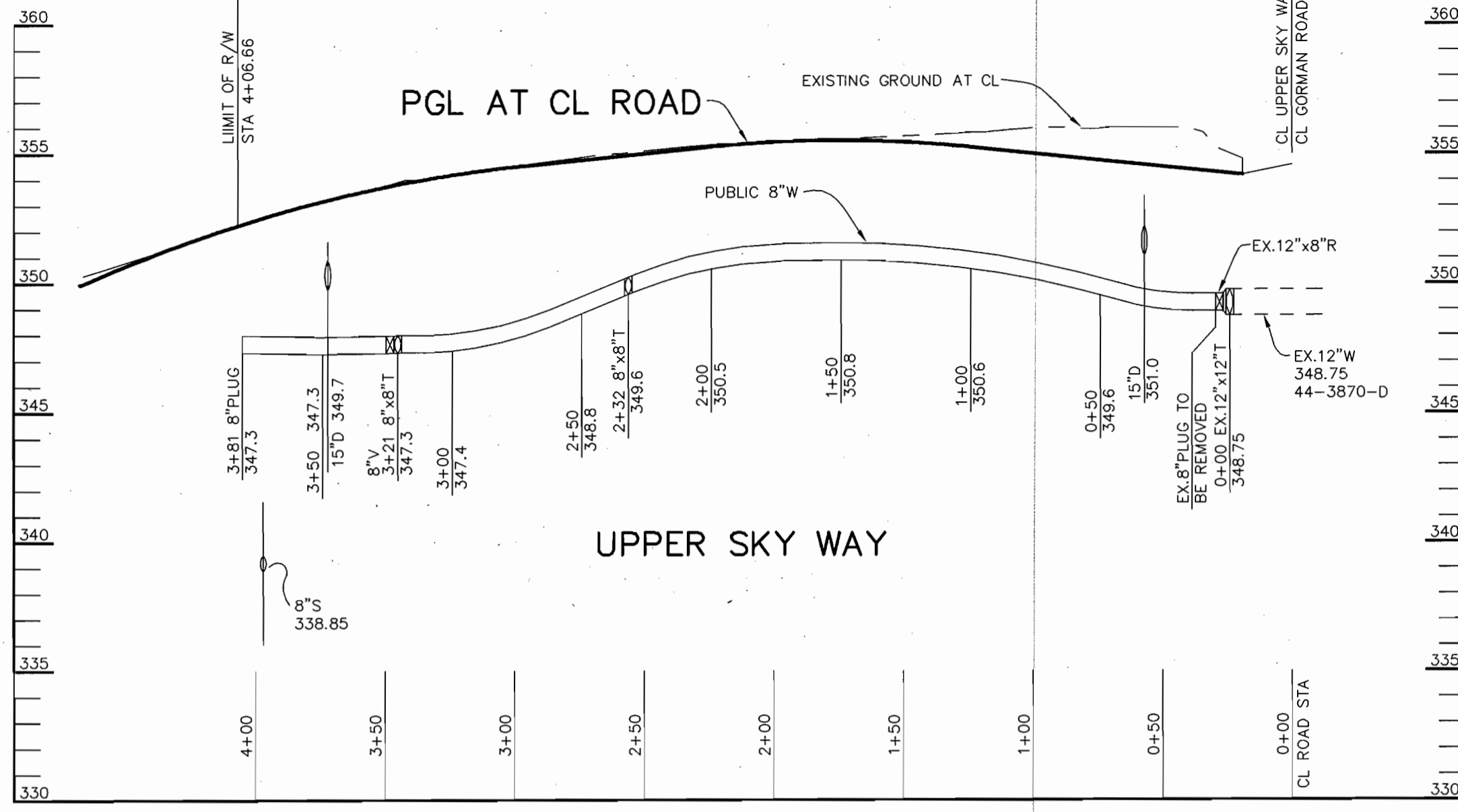
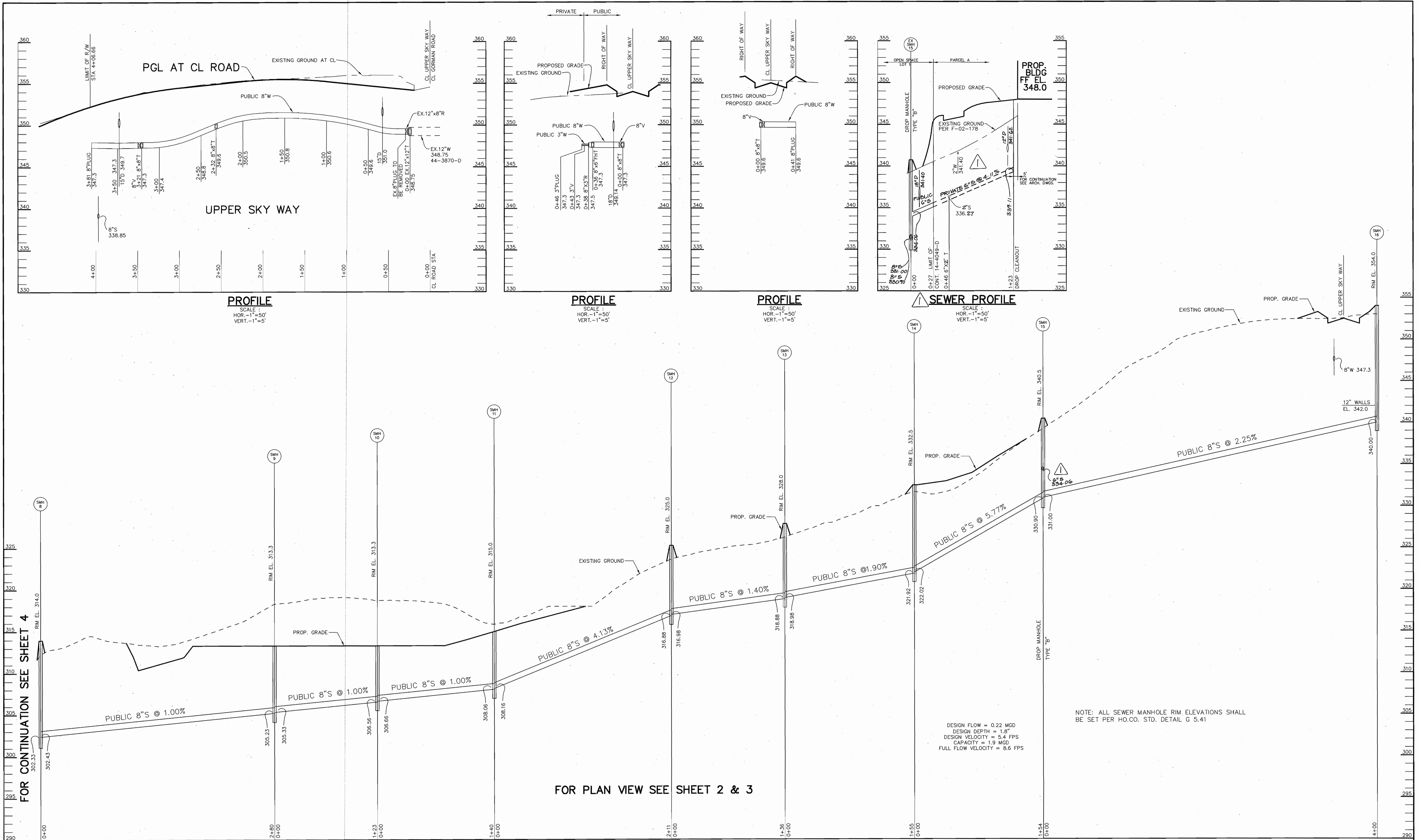
SCALE AS SHOWN
SHEET 3 OF 5



FOR CONTINUATION SEE SHEET 5

FOR PLAN VIEW SEE SHEET 3

DEPARTMENT OF PUBLIC WORKS HOWARD COUNTY, MARYLAND <i>Christopher J. Reid</i> CHIEF, BUREAU OF UTILITIES 11-12-02 DATE	DEPARTMENT OF PLANNING & ZONING HOWARD COUNTY, MARYLAND <i>Christopher J. Reid</i> CHIEF, DEVELOPMENT ENGINEERING DIVISION 12/3/02 DATE	Patton Harris Rust & Associates, pc Engineers, Surveyors, Planners, Landscape Architects. P+H+R+A 8818 Centre Park Drive Columbia, MD 21045 T 410.997.8900 F 410.997.9282		DES: C.J.R.				PROFILES OF SEWER MAINS	EMERSON SECTION 3 AREA 2 PARCEL A & B AND OPEN SPACE LOT 1 6th ELECTION DISTRICT HOWARD COUNTY, MARYLAND CONTRACT 24-4049-D	SCALE AS SHOWN
				DRN: DAM						
DATE: 10/30/02				BY: C.J.R.	NO.: MODIFIED PROFILE - SMH 5 AND ADDED SEWER PROFILE - SMH 5 - SMH 17	DATE: 01/10/03	REVISION:	600' SCALE MAP NO. 47 BLOCK NO. 8 & 9		



DEPARTMENT OF PUBLIC WORKS HOWARD COUNTY, MARYLAND [Signature] 11-12-02 CHIEF, BUREAU OF UTILITIES	DEPARTMENT OF PLANNING & ZONING HOWARD COUNTY, MARYLAND [Signature] 12/3/02 CHIEF, DEVELOPMENT ENGINEERING DIVISION	Patton Harris Rust & Associates, pc Engineers, Surveyors, Planners, Landscape Architects. PHRA 8818 Centre Park Drive Columbia, MD 21045 T 410.997.9950 F 410.997.9282	CHRISTOPHER J. REID #19949	DES: C.J.R. DRN: DAM CHK: C.J.R. DATE: 10/30/02	C.J.R. [Signature] BY NO. [] REVISION [] DATE []	MODIFIED SEWER PROFILE 01-10-02	600' SCALE MAP NO. 47 BLOCK NO. 8 & 9	EMERSON SECTION 3 AREA 2 PARCEL A & B AND OPEN SPACE LOT 1 6th ELECTION DISTRICT HOWARD COUNTY, MARYLAND CONTRACT 24-4049-D	SCALE AS SHOWN SHEET 5 OF 5
				PROFILES OF WATER AND SEWER MAINS					